



## ONE-DAY MOUNTAIN EXCURSIONS IN PICTURESQUE COLORADO

For the enjoyment of thousands of visitors who will this season come to Colorado, and for the pleasure of our own "homefolks" who appreciate frequent summer recreation in the mountains, The Colorado and Southern Railway has outlined several inexpensive and delightful trips—most of them made within the day. Brief descriptions of the most popular ones are herein given with fares and train schedules. During the entire summer season (June to September) reduced round-trip fares will be made to most State points, especially for the use of visitors.

## What to See in Colorado

**A**LL of the famous Colorado scenic one-day trips, comprising the grandest scenery in the world, the picturesque summer resorts and the most interesting localities, are reached via The Colorado and Southern Railway from Denver; whose trains arrive and depart from the Denver Union Station.

The following is a brief description of the most important pleasure trips:

### **The Far-Famed Georgetown Loop Trip**

#### *A Midsummer One-Day Trip to the Snowbanks*

Leaving the Denver Union Station the train carries the traveler toward the pine-covered gorges of the mountains, where nature seemingly has reveled in the delight of her own picturesqueness. It is sixteen miles to Golden, across a level stretch of country, which suggests some cozy valley in the far East—comfortable farm houses, fields of waving grain, shady groves and running streams of water. Soon the "hog-backs" or "foothills" are reached, in the midst of which nestles the town of Golden.

The altitude of Golden is 5,680 feet. It was formerly the capital city of the state. The State School of Mines, one of the foremost schools of its kind in the country, is located here.

From here a plunge is made into the entrance of Clear Creek Canon, and for nearly forty miles the train follows this picturesque "serpentine trail."

**CLEAR CREEK CANON.** There is nothing like Clear Creek Canon in America. It is no exaggeration to say that, for wild, rugged scenery, Nature in her most majestic mood failed to provide its equal; it cannot be described; words seem puny and inadequate. And, after many a day-dream, when one is restored to the quiet of home, the effort to place the picture again before the fancy is fruitless. There remains a vision of a resistless mountain torrent rushing madly down a wild chasm; overhead a haunting hand's-breadth of gleaming sky; the grim walls of the canon close enough to touch at times as you flit by; the fantastic shapes carved upon the mountain, bold profiles and fairy castles; the tranquil summerland into which you occasionally dash, when the canon winds into a few brief acres, green, shady, inviting; a passing glimpse of a dazzling snow-summit, far away in the upper ether—these, and more, one may recall; and still there remains an indefinable sense of something elusive that you have not held fast, and cannot describe. It is the spirit of beauty, the power of ennobling scenery, which cannot be taken away from its home or ever reproduced in words.

Always climbing, climbing, the narrow-gauge engine wends its way over the serpentine trail, bringing into



# ONE · DAY · MOUNTAIN · EXCURSIONS

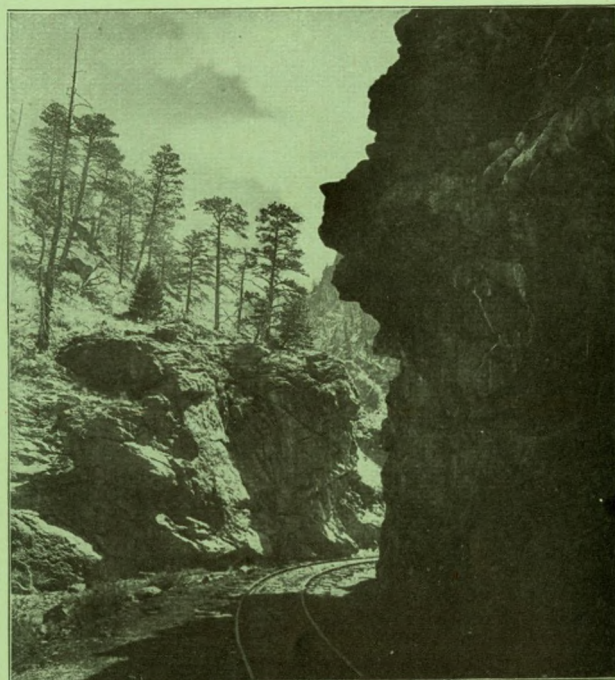
view from time to time points of especial interest, such as the Lion's Head, a perfect formation seemingly chiseled by a sculptor; down among the rocks the resting figure of a rhinoceros; the Old Roadmaster, who, even before one took the stage up Clear Creek, stood guard over the canon; the dark, towering form of Mt. Dexter; Hanging Rock, a massive smoke-begrimed ledge, projecting entirely over the winding track; the much-talked-of Mother Grundy, which, because of its "I-told-you-so" expression, is certainly properly named; Inspiration Point and the Lone Pine Tree—these and many more are the delightful surprises in store.

**IDAHO SPRINGS** is the first town of importance reached on the Loop excursion, and no health resort in the world possesses finer climate. Celebrated indeed is the therapeutic value of the radio-active mineral springs located here. United States government analysis shows them identical in mineral content with the famous springs at Carlsbad in Austria; the State School of Mines' analysis pronounces them strong in radium and twenty-five times greater in radio-activity than the springs at Joachimsthal, Bohemia. Idaho Springs is rapidly gaining much well-deserved prominence as a Spa—and will soon be known throughout the country because of its baths and these wonderful waters. A handsome modern hotel of large capacity and perfect in appointment was recently completed.

**GEORGETOWN** nestles in a basin of the mountains with a narrow exit down the canon and an equally



FAR-FAMED GEORGETOWN LOOP



OLD MOTHER GRUNDY—LOOP TRIP

narrow inlet from above, Green Lake, one of the loveliest bodies of water in the Rockies, being within short distance. Four miles from Green Lake is Highland Park, a favorite summer camping ground. The waters of the lake are generously stocked each year with trout.

When the traveler reaches Georgetown he is of the opinion that the trip is certainly at an end, as the depot is at the base of a mountain, which necessitates the backing of the train out of the station before ascending the Far-Famed Georgetown Loop.

**THE FAR-FAMED GEORGETOWN LOOP**, that wonderful piece of engineering skill now world-known.

Passing above West Clear Creek, with just a glimpse of the picturesque bridge that spans Devil's Gate, the road runs under a great viaduct, and rises and rises until you have left the city hundreds of feet below and to the north; then with a sudden turn, the road is again seen, with the train now rushing toward the city and over the great high bridge, completing the "loop," and still climbing; down below is the track just passed,



away again on the further side of the mountain; again crossing to the west side, suddenly turning to the east, until the "Big Fill," seventy-six feet high—too sharp a curve for a bridge—has given another circle to the track; then, with a turn to the west, around the slope of Leavenworth Mountain; still another view of Georgetown, with five tracks in view, each seeming to have no relation to its neighbor, until another valley in the mountains discloses the pretty village of Silver Plume, named in honor of America's greatest statesman, James G. Blaine, known as "The Plumed Knight."

**SILVER PLUME.** Elevation, 9,176 feet; 54 miles from Denver. Terminus of the celebrated Georgetown Loop line. Here is Grays Peak, towering 14,441 feet above sea-level, or higher than Pikes Peak. Large numbers of tourists visit the nearby mines.



LUNCH PAVILION, SILVER PLUME

At the C. & S. Railway's pavilion, where trains stop, excellent luncheons, on the a la carte plan, may be obtained daily throughout the summer season.

**TRAIN SCHEDULES:** From early in June to the middle of September daily trains leave Denver Union Station at a convenient morning hour for The Loop, scheduled that the round trip may be made in about nine hours, returning to Denver late in the afternoon.

## FARES

*From May 15th to October 15th the round-trip fare from Denver over The Loop, Sundays only, is \$2.65; Saturdays and Sundays, \$3.55; other days, \$3.96.*



A SUMMER HOTEL AT CASSELLS. IN PICTURESQUE PLATTE CANON PIKE NATIONAL FOREST

## The Picturesque Platte Canon Resorts In the Pike National Forest

**C**OLORADO is exceedingly fortunate in possessing a number of resorts that are "different" from the general run of summer places, and none take precedence over these picturesque Platte Canon resorts, which are typically Coloradoan. One somehow seems to come closer in touch with Nature, to hear the gurgling, rushing and real music of a mountain stream, and the Platte River is in truth one of the grandest of these.



TROUT FISHING IN PICTURESQUE PLATTE CANON PIKE NATIONAL FOREST



# ONE · DAY · MOUNTAIN · EXCURSIONS



BEAUTIFUL GROVE OF PINES AT CASSELLS IN PLATTE CANON, PIKE NATIONAL FOREST

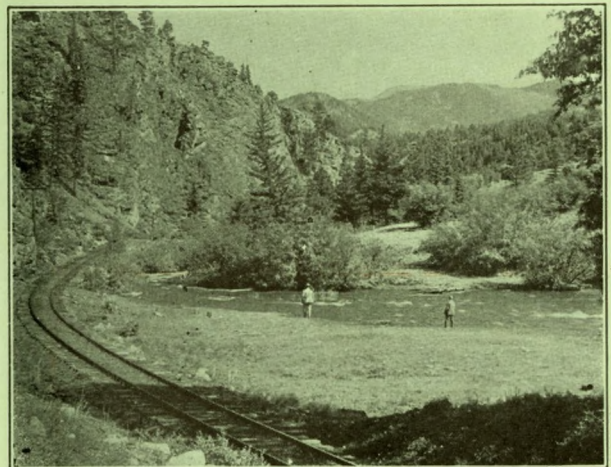
From the moment of entering the gateway to the Canon the eye rests on a harmonious vista of foliage, rocks and natural magnificence. For over sixty miles one follows the Platte River which now surges through some narrow pass, now gently flows through some meadow park. Ever changing views of high, rocky cliffs unfold themselves on either side. At times the railroad hugs the base of canon walls so sheer and high the eye grows dazed looking upward. From the time the train enters the canon bands of campers and tourist parties begin to leave it at their favorite spots along the line, fishermen seeking the haunts of the trout, campers searching out some cozy nook to locate their tent and tourists going to some one of the many attractive hotels which lend to this resort district one of its most important features.

The Platte River is one of the best fishing streams in the state, and there is no other stream as near Denver or as easily reached where plenty of trout abound.

Practically the entire length of the Platte River here is stocked every season with millions of this gamy fish

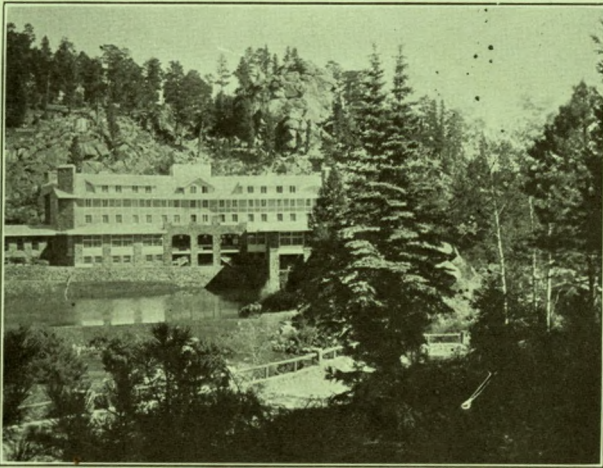
and there is little choice as to the best places to fish, as every point along the railroad furnishes good sport. This trip is the only one of its kind that can be easily made in one or two days' time from Denver, and its pleasure is enhanced by the fact that one can always find meals ready at hand should he stray too far from camp or have no definite stopping place in view.

There are many pretty resorts in the canon, such as Strontia Springs, South Platte, Foxton, Buffalo Park, Clouderest, Pine Grove, Insmont, Baileys, Glenisle, Shawnee, Cassells, Grant, etc., where very good hotel, cottage and camping accommodations may be obtained at reasonable prices, and where supplies, fuel and water are always easily available. If you camp out, rent a cottage, or stop at one of the hotels in Platte



A SCENE IN PLATTE CANON, PIKE NATIONAL FOREST





TROUTDALE HOTEL ABOVE EVERGREEN IN BEAR CREEK CANON  
PIKE NATIONAL FOREST

Canon, you will ever remember your trip and eagerly look forward to the next season when you can again forget the cares of business and the noise of the city and come back among the pines and by the singing mountain streams of the West.

### Colorado Springs, Manitou and Pikes Peak Region

**T**HE best view of Pikes Peak, and the one immortalized by the brush of Bierstadt, is from the Colorado and Southern Railway enroute to Colorado Springs.

Colorado Springs is one of the most beautiful places in the country, and there is much to interest the tourist in and about the city.

Manitou is six miles from Colorado Springs, connected with it by steam and electric railways. Many

### Round-Trip Tickets

*May be purchased during the summer months at reduced fares to all points in Platte Canon. Commutation Tickets are also on sale at rates making a considerable saving over the single ticket fares.*

points of interest may be visited. The Garden of the Gods, Cheyenne Canon, Williams Canon, Ute Pass, The Reproduction of the Cliff Dwellings of Colorado and New Mexico, and a score of features which have made the region famous might be named and described at length. Writers of world-wide fame have dwelt upon the attractiveness of the Pikes Peak region. The trip to the summit of Pikes Peak is well worth all the time and expense of a journey across the continent. This can be made either by auto, rail, burro, or on foot—by auto over the Pike's Peak Highway, the world's highest motor highway. This wonderful road is a double track boulevard of easy grades, affording grand views. The Auto Highway Company operates a fleet of automobiles, or individuals can drive their own cars for a reasonable toll fee. The Pike's Peak Cog Road operates train service twice daily. The ascent of nine miles to the summit, 14,109 feet above sea level, is through wonderful scenery with illimitable views of mountain and plains.

Beautiful Crystal Park is accessible over a private road.

From Denver to Colorado Springs is a distance of seventy-five miles. The ride is accomplished in about two and one-half hours, and, as the mountains are continually in view, the trip is one of the popular outings, attracting thousands of sight-seers every season.

**FARES:** During the summer months, beginning May 23rd, round-trip tickets will be on sale to Colorado Springs at reduced fares.



CLIFF DWELLINGS AT MANITOU



# ONE · DAY · MOUNTAIN · EXCURSIONS

As the Colorado and Southern Railway offers excellent service between Denver and Pueblo, via Colorado Springs, see that your ticket reads via the Colorado and Southern from Denver. The tourist fares from many sections of the country are the same to each of the three points, and tickets will be furnished on request by agents of the trunk lines via Denver and Colorado Springs to Pueblo over the Colorado and Southern, with stop-over privileges at Denver and Colorado Springs in both directions without additional cost. On such tickets one may enjoy the sights of the Pikes Peak region without further expense for railroad transportation, except for the side trips. Our trains between Denver, Colorado Springs, and Pueblo run on practically an interurban schedule. They are fast and provided with superb equipment, electric lighted dining cars, etc.

## The San Isabel National Forest

**B**YOND the rolling prairie 25 miles west of Pueblo and east of the San Luis Valley of Southern Colorado is the San Isabel National Forest, comprising 651,200 acres. Pueblo is its northern and eastern gateway.



PIKES PEAK AUTO HIGHWAY



COLORADO SPRINGS

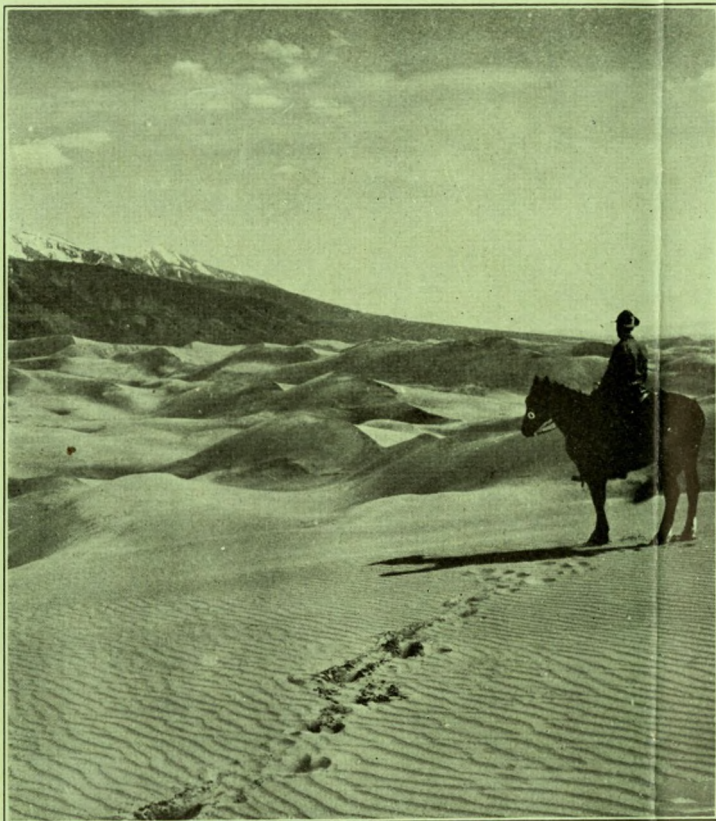
Mighty sand dunes, the largest in America, superb mountains, crystal lakes, dashing streams and roaring cataracts characterize the San Isabel National Forest. The Sangre de Cristo mountains, one of the most beautiful mountain ranges not only in Colorado, but in the United States, lie within the confines of this Forest. The Spanish peaks, bold and weird, fantastically shaped rocks and everlasting snow fields add to the interest of the traveler. Wild flowers, daintily colored and profuse, grow on the mountain sides and in the valleys. Deer, elk, grouse, ptarmigan and other wild animals and birds roam the Forest or flit here and there through the woods. Gamy trout in streams and lakes appeal to the angler. Roads and trails lead to the most enchanting spots, and the numerous camping places lure the recreationist to seek rest and quiet.

## How to Reach the Park

**T**HE San Isabel Forest Tours automobile service has been organized to reach these wilds, heretofore, largely unknown, to the general public.

The cost of this wonder trip is only \$30.75 per passenger which includes auto transportation, meals and lodging for two days. Special trips can be arranged for.





IN THE MIDDLE OF THE "COLORADO SAHARA." THIS IS THE LARGEST AREA OF SHIFTING SAND IN THE UNITED STATES, NOT FOUND ON THE SHORE OF A BODY OF WATER

Tickets and information may be obtained at any of the leading hotels and ticket offices in Pueblo, Colorado Springs and Denver.

### The Colorado National Forest

*Embracing the Boulder Glacier Region  
Colorado's Most Recently Developed  
Mountaineering Play Grounds*

**J**UST one and one-half miles to the west of Boulder is the boundary line of the Colorado National Forest, embracing 1,500,000 (one and one-half million) acres of the most wonderful mountain scenery in America.

The scenic glacier region of the Colorado Rockies is situated in this National Forest, thirty miles northwest of the beautiful city of Boulder. There are nine prominent glaciers in this region, the north and south Arapahoe, Saint Vrain glaciers, Isabel, Fair, Peck, and Roberts.

Come to Colorado and see some of the existing ice bodies. You will be so carried away by the awe-inspiring grandeur of their settings and a study of the glaciers themselves, their miniature icebergs, lakes, bergschrunds, crevasses, dirtbands, zones and stripes, hanging valleys, cirques and benches, terminal, lateral, and medial moraines and their rock-flour that gives the emerald hue to their lakes that you will care naught for their age, but will be like the Montana cowboy who, coming at night into a mountain region new to him, and awakening in full view of a wonderful peak, gazed in silence, with tears in his eyes, and finally throwing up his hands, shouted, "Hurrah for God." The handy work of Nature is wonderful in this glacial area.

There is to be an eighteen-foot road built to the Rainbow Lakes from the highway, which will permit autos to get within three miles of the Arapahoe Glacier, connecting with the Colorado National Forest "figure 8" trails. This will make an easy one-day trip out of Denver. At present it is possible to make the trip in one day out of Denver and Boulder, by automobile from Boulder and horseback from Arapahoe Camp for those desiring to explore the glacier, returning the same route; or the circle trip may be continued through the St. Vrain Canon.

Along and in the vicinity of this route are numerous mountain villages and hotels, including The Alps Lodge.



CREVASSE, ARAPAHOE GLACIER, COLORADO NATIONAL FOREST



---

---

## ONE · DAY · MOUNTAIN · EXCURSIONS

---

---

Eckel's, Nederland, Eldora, Glacier Lake, Ward, Camp Newaka, Tumbleson's Lake, Stapp's Lake, Camp Kimoho, Peaceful Valley, Heathermeade, Will's, Fern Cliff, Allenspark, Copeland Lake Lodge, Raymonds, Jordans, and Bella Vista. The glaciers visible from the highway are the Arapahoes, which are in plain sight from Boulder.

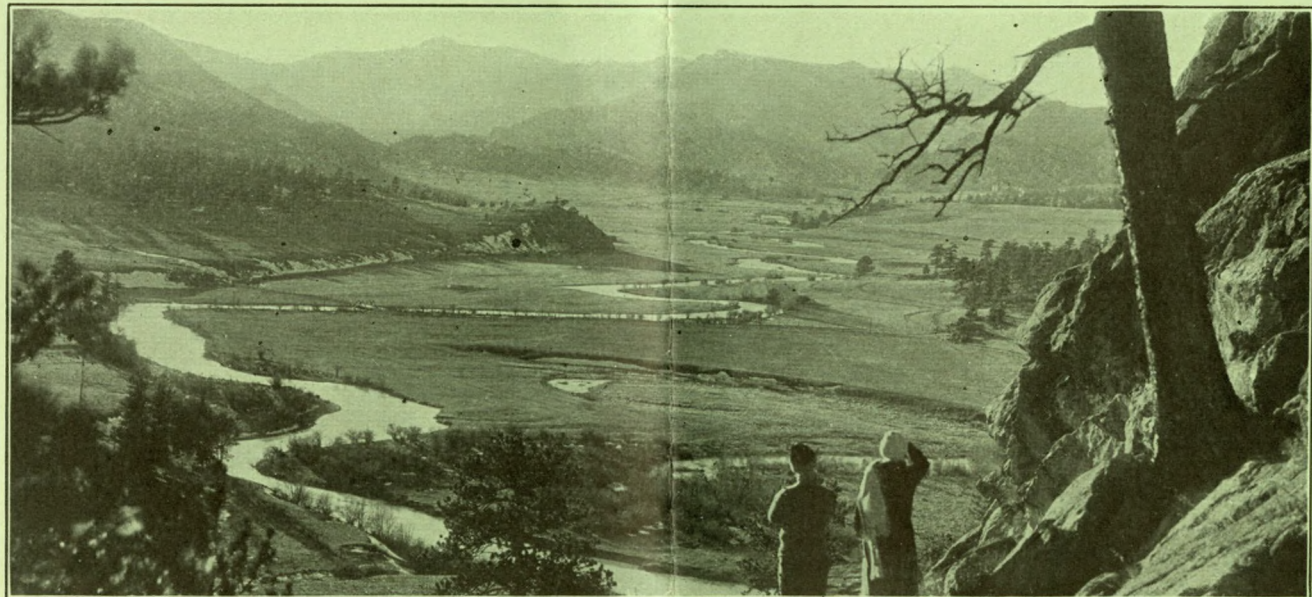
Within a few hundred yards from Ward a fine series of moraines is to be seen, caused by the action of what is now known as Isabel Glacier. The associated glaciers which formed over this watershed of the South St. Vrain and Jim creeks, "Came down to an altitude of about 9,000 feet; just west of Ward these glaciers over-rode the hills and the debris indicates a depth of ice probably at least 300 to 400 feet." A small portion of the Isabel Glacier is to be seen from Struggler Flat. The cirque of the Isabel Glacier, unlike others, in Colorado, faces southwest.

The north lobe of the middle St. Vrain Glacier can also be seen from Struggler Flat, nestled against the Continental Divide between Ogalala and Sitting Bull peaks.

The highway leaves the mountain ridges, over which it travels from Nederland, at Peaceful Valley, for more than a mile over an old lateral moraine created by the middle St. Vrain Glacier.

The view from the top of this moraine is the closing picture of the Continental Divide on the Glacier Circle Trip, and reveals Mt. Audobon with her snow-capped double peaks, Sawtooth Mountain on which one of the smaller glaciers is nestled close to the Buchanan Pass trail, which is the north link of the "figure 8" trails.

The Peak to Peak Highway leads westward to Longs Peak, three miles down the canon to Raymond, then the return trip is continued on the new State Highway, one of the best-built wide roads in the Colorado National Forest, commonly known as the South St. Vrain. There is much of interest to see in the formation of the walls of this canon, from a perfectly wooded side hill, to towering cliffs of varying heights, dotted over with trees, plants, and wild flowers, some trees even rooted in the cracks of enormous rocks and boulders. The rock formations are wonderful; there is to be seen the Barking Dog, an elephant sitting in the bed of the stream, and human faces of many features, which form a whole cliff of rock faces. The canon ends at the village of Lyons, which has a most wonderful and unique foothill setting. The "Park to Park Highway" leads from there to Boulder, along the foothills, giving a grand panorama of Boulder County's agricultural area.





### Beautiful Estes Park

**E**STES PARK, one of Colorado's most popular summer resorts, is located within seventy miles of Denver, at the foot of grim, mighty Longs Peak. Here the Continental Divide, the main range of the Rockies, stretches out a spur like a huge, crooked arm, within whose circle nestles a natural amphitheatre of a hundred thousand acres, carpeted with broad expanses of meadow land, and guarded by fifteen snowy peaks which rise sheer from three sides. This is Estes Park.

Estes Park offers everything to the vacationist that the heart of man could ask. The charm of the place is not to be catalogued, since it is born of the clean, rare air of the hills, of the glorious freedom of the great mountains and of cool summer breezes and rippling, running water. But this much may be said: for the golfer, there are two courses for choice, laid out in the sweet, piney, blue-skyed parklands. For the motorist, level natural-surfaced roads, perfect for speeding—a seven-mile boulevard, fifty feet wide, bisects the park, and from it radiate splendid roads to every point of interest. Horseback riding is an exercise especially adapted to the place, and in this hundreds participate. The tennis player finds the weather and the conditions ideal. As for the fisherman, he must be hard indeed to please if the Big Thompson and its tributaries cannot furnish him sport to his fancy. Scarcely a day's journey from the Park lies one of the wildest sections of the Rocky Mountains. Some of the canons and parks have never been fully explored, and offer an invitation to the hardy adventurer. In short, Estes Park offers a wonderful diversity of entertainment, from the study of glacial moraines of prehistoric days to the study of the twentieth century summer girl in all her glory.

There are numerous large, well-appointed, splendidly conducted summer hotels in Estes Park, which rank with the best resort hotels in the country. There are also many smaller places.

### Diverse Routes to Estes Park

**T**HE following attractive diverse routes to Estes Park are available via The Colorado and Southern Railway, through the Rocky Mountain National-Estes Park District:

Tickets cover rail transportation Denver to Longmont, Lyons, Loveland or Fort Collins, Colo., through the celebrated agricultural district, with the snow-covered Rocky Mountain range to the west; thence automobile from any of these points to Estes Park.

These large, comfortable cars are especially built for this service, carrying twelve passengers.

Tickets via Longmont, Lyons, Loveland or Fort Collins may be used optionally north of Denver. That is, they may be used via any one of these routes or points in either direction, regardless of route of ticket. At each point mentioned automobiles connect promptly with Colorado and Southern trains to and from Denver, making a splendid through service both to and from Estes Park at convenient hours of the morning and afternoon.

The round-trip season-limit fare from Denver to Estes Park is but \$10.50, tickets on sale June 1 to September 30. It is suggested that tickets from distant points be bought through to Estes Park and return. This reduces the through fare and eliminates rebuying of tickets and rechecking of baggage at Denver.

---

Write for handsomely illustrated booklet on Rocky Mountain National-Estes Park, giving full information as to hotels, points of interest, etc., post free.

---

### The Garden Spot of Colorado

**A** SOJOURN in Colorado is incomplete if one has not visited one of its extensive agricultural sections and learned of the vast wealth produced by its farms under irrigation.

Stepping aboard the north-bound Colorado and Southern morning train for Greeley, one is borne beyond the suburbs of Denver, through the thriving towns of Boulder, Longmont, Berthoud and Loveland to Fort Collins—75 miles. Thence, turning sharply to the east and southeast, he glides past Windsor, 25 miles to Greeley. For a hundred miles he has ridden through the best developed, the most productive, the most prosperous, the most inviting of all the agricultural portions of the state, where agriculture by irrigation is to be seen at its most successful stage. At Boulder are the State University, Colorado Chautauqua and Summer School; at Fort Collins the State Agricultural College, and at Greeley the State Teachers' College.

A trip from Denver through this celebrated farming region is filled with interest. Great irrigation canals, sparkling lakes, fields of sugar beets, alfalfa, wheat, oats and potatoes are seen. Scores of up-to-date, comfortable homes, carefully kept lawns beautiful with flowers, attest the advancement of the farming population of



## ONE DAY MOUNTAIN EXCURSIONS IN PICTURESQUE COLORADO

Northern Colorado. On one side is a sweep of rolling fields; on the other the foothills, backed by the rugged mountains. Probably no other section of the state has such acute contrasts of scenery. This also may be seen in one day, returning to Denver early in the evening. Round-trip fare, \$5.88.

The Colorado Chautauqua is an institution known throughout the entire South and West. Its sessions cover a period of six weeks, beginning July 4th, and its fine programs include the greatest lecturers, educators, entertainers and musicians in America. The Chautauqua grounds are at the edge of Boulder in a location unsurpassed for beauty and the great variety of its surrounding scenery. Cottages may be rented or accommodations secured through the Chautauqua management at Boulder, Colorado, by addressing the Secretary.

### Trout Fishing in Colorado

**C**OLORADO contains countless streams and lakes that have made her famous as a trout-fishing state. Reference here will particularly be made to Platte Canon, through which flows the Platte River, and to the Big Thompson River, as the most accessible streams and because the Colorado and Southern Railway has long considered the fishing in streams along its lines one of its principal assets. Accordingly, it watches fish preservation in these streams and carefully fosters the legitimate sport of angling.

Until recent years the native trout held almost undisputed sway in these streams; but since the planting of the California rainbow and eastern brook, the native is not so plentiful, although many streams are being restocked with natives, and in time his numbers may be restored.

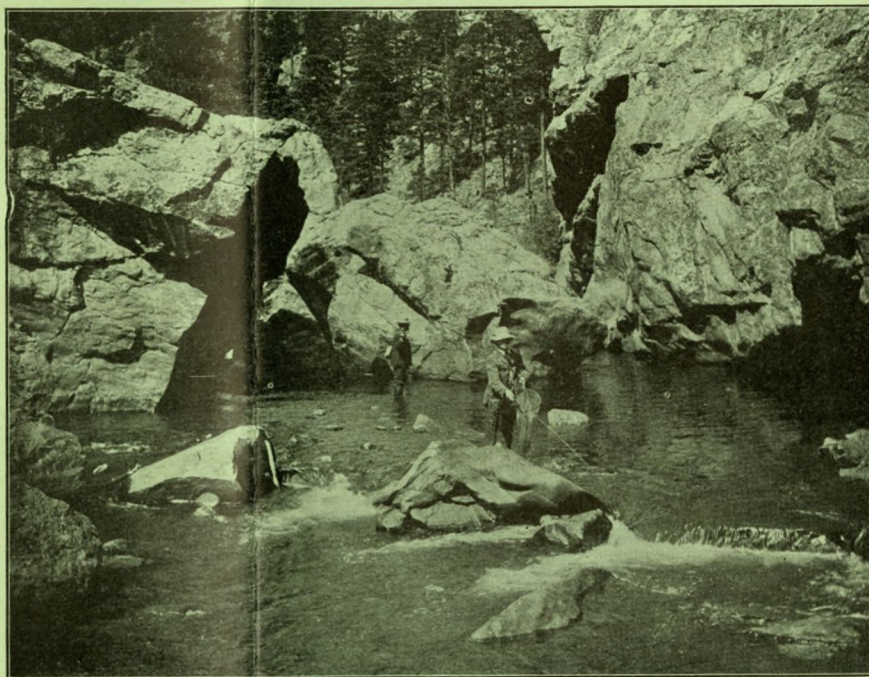
As the heretofore arid regions become populated by the thrifty farmer, the waters lose their finny inhabitants. Consequently, systematic restocking is imperative. It has been demonstrated that interference with the course of mountain streams, or their slightest pollution, destroys fish life. So it is

not unnatural that some of our mountain streams are troutless.

A most notable example of what care and judicious "planting" of fish in a natural stream can do is seen in the Platte River. This is the state's ideal trout stream; but if it were not regularly restocked and constant care taken to prevent violations of laws protecting our fish, fishing in the Platte would soon become but a memory.

Local fishermen naturally know where the best fishing is to be found, just as the small boy of former days knew the "best hole"; so visiting anglers can do no better than to follow Denver fishermen as to the matter of location. Many local sporting-goods stores have fine assortments of rods, lines, flies and equipment; so one need not bring everything he has.

In the Leadville, Clear Creek, Boulder and Fort Collins districts, trout fry of a size able to care for themselves are turned right into the stream. Each year this regular system of restocking is done, and the result is fishing that brings anglers from all points of the compass.



FISHING IN PLATTE CANON NEAR ESTABROOK





# Representatives Colorado and Southern — Fort Worth & Denver City Railways



**ATCHISON, KAN.,** Second and Main Streets ..... Phone, 240  
E. L. SPEER ..... GENERAL AGENT

**ATLANTA, GA.,** 822 Healey Bldg. .... Phone, Walnut 0175  
H. R. TODD ..... GENERAL AGENT

**BEATRICE, NEB.,** ..... Phone, 41  
H. L. LEWIS ..... GENERAL AGENT

**BILLINGS, MONT.,** 2812 Montana Avenue ..... Phone, Auto, 1127  
L. W. JOHNSTON ..... GENERAL AGENT

**BOSTON, MASS.,** 294 Washington St. .... Phone, Congress 5657  
ALEX STOCKS ..... GENERAL AGENT

**BURLINGTON, IOWA,** Burlington Building ..... Phone, 2400  
J. J. TEETER ..... GENERAL AGENT

**BUTTE, MONT.,** 614 Metals Bank & Trust Bldg. .... Phone, 882  
T. J. CUMMINS ..... GENERAL AGENT

**CASPER, WYO.,** Burlington Depot ..... Phone, 1  
JOHN A. LEARY ..... GENERAL AGENT

**CHEYENNE, WYO.,** C. & S.-Burlington Station ..... Phone, 318  
GEORGE F. JONES ..... GENERAL AGENT

**CHICAGO, ILL.,** 179 W. Jackson Street ..... Phone, Wabash, 4600  
J. R. VAN DYKE ..... GENERAL AGENT, PASS. DEPT.

**CINCINNATI, OHIO,** 104 West 4th St. .... Phone, Main 59  
J. C. BOYER ..... GENERAL AGENT

**CLEVELAND, OHIO,** 720 Euclid Ave. .... Phone, Bell 1428  
E. H. SMITH ..... GENERAL AGENT

**CLINTON, IOWA,** 404 Wilson Building ..... Phone, Bell 906; Tri-City 1298  
WM. AUSTIN ..... GENERAL AGENT

**COLORADO SPRINGS, COLO.,** 317 Mining Exchange Building ..... Phone, Main 4641  
R. T. FOX ..... GENERAL AGENT, PASSENGER DEPT.

**DEADWOOD, S. D.,** 48 Sherman Street ..... Phone, 24  
J. L. BENTLEY ..... GENERAL AGENT

**DENVER, COLO.,** ..... Phone, Main 6905  
City Ticket Office, 901 Seventeenth St., Corner Champa ..... TRAV. FREIGHT AND PASSENGER AGENT  
S. R. DRURY ..... DEPOT TICKET AGENT  
331 Railway Exchange Building ..... GENERAL AGENT  
G. H. LOGAN ..... GENERAL AGENT  
T. R. LANGDON ..... TRAV. FREIGHT AND PASSENGER AGENT  
J. P. FLEISCH ..... DEPOT TICKET AGENT

**DES MOINES, IOWA,** ..... Phone, Walnut 3270  
Consolidated Ticket Office, 403 W. Walnut Street ..... AGENT  
GEO. R. KLINE ..... AGENT

**DETROIT, MICH.,** 708 Free Press Building ..... Phone, Main 6905  
T. P. HINCHCLIFF ..... GENERAL AGENT

**FORT COLLINS, COLO.,** ..... GENERAL AGENT  
F. C. McGRATH ..... GENERAL AGENT

**GALESBURG, ILL.,** Burlington Station ..... Phone, The Burlington  
C. I. TWYMAN ..... GENERAL AGENT

**HANNIBAL, MO.,** Third and Lyon Streets ..... Phone, The Burlington  
T. L. LAWRENCE ..... GENERAL AGENT

**INDIANAPOLIS, IND.,** 11 South Meridian St. .... Phone Circle 3263  
E. L. GANNAWAY ..... GENERAL AGENT

**JACKSONVILLE, FLA.,** 305 West Bldg. .... Phone, 8505  
T. H. HARRISON ..... TRAVELING FREIGHT AND PASSENGER AGENT

**KANSAS CITY, MO.,** 7th and Walnut Sts. .... Phone, Main 0278  
H. S. JONES ..... GENERAL AGENT, PASS. DEPT.

JOHN A. HULEN,  
Traffic Manager, Ft. Worth, Texas

W. F. STERLEY,  
General Freight and Passenger Agent, Ft. Worth, Texas

JAS. J. LAWRENCE,  
Assistant General Passenger Agent, Ft. Worth, Texas

## Representatives Ft. Worth & Denver City and Wichita Valley Railways

**AMARILLO, TEXAS** ..... Phone, Main 164  
W. F. LAND, 205-7 Panhandle Bldg. .... AGENT  
J. D. SHUFORD ..... LIVE STOCK AGENT

**DALLAS, TEXAS,** 701 Kirby Bldg. .... Phone, Main 6905  
T. V. MURRAY, Jr. .... GENERAL AGENT

**FORT WORTH, TEXAS** ..... Phone, Main 0278  
N. S. DAVIS, 404 Denver Record Building ..... GENERAL AGENT  
D. E. NELSON, 503 Denver Record Bldg. .... TRAV. PASS. AGENT  
BEN T. SCOTT, 114 East Ninth Street, Phone Lamar 872 ..... CITY TICKET AGENT

JOHN A. HULEN, Traffic Manager, Ft. Worth, Texas  
W. F. STERLEY, General Freight and Passenger Agent, Ft. Worth, Texas  
JAS. J. LAWRENCE, Assistant General Passenger Agent, Ft. Worth, Texas

**KEOKUK, IOWA,** Fifth and Johnson Streets ..... Phone, 976  
A. C. MAXWELL ..... GENERAL AGENT

**LEAVENWORTH, KAN.,** Fifth and Choctaw Streets ..... Phone, 100  
S. E. NIRDLINGER ..... GENERAL AGENT

**LINCOLN, NEB.,** C. B. & Q. Station ..... Phone, Atlantic 5578  
J. J. COX ..... CITY TICKET AGENT

**LOS ANGELES, CAL.,** 333 Central Building ..... Phone, Atlantic 6831  
W. W. ELLIOTT ..... GENERAL AGENT

**MILWAUKEE, WIS.,** 221 Grand Ave. .... Phone, Grand 7077  
F. D. HUNTER ..... GENERAL AGENT

**NEW ORLEANS, LA.,** 708 Common St. (St. Charles Hotel) ..... Phone, Main 6375  
G. B. MAGRUDER ..... GENERAL AGENT

**NEW YORK CITY, N. Y.,** 421 Stewart Building, 280 Broadway ..... Phone, Worth 8580  
W. S. DEWEY ..... GENERAL AGENT

**OMAHA, NEB.,** ..... Phone, Bell 860; Home 859  
City Ticket Office, 1508 Farnum Street ..... GENERAL AGENT  
J. B. REYNOLDS ..... CITY TICKET AGENT  
1004 Farnum Street ..... GENERAL AGENT  
C. C. BRADLEY ..... TRAVELING PASSENGER AGENT

**PADUCAH, KY.,** 1016 City National Bank Bldg. .... Phone, Bell 860; Home 859  
E. E. MORRIS ..... GENERAL AGENT

**PEORIA, ILL.,** 230 South Jefferson Avenue ..... Phone, 5651  
H. D. PAGE ..... GENERAL AGENT

**PHILADELPHIA, PA.,** 1002 Finance Bldg., 1428 So. Penn Square ..... Phone, Locust 6320  
H. K. MILES ..... GENERAL AGENT

**PITTSBURGH, PA.,** 357 Fifth Ave. .... Phone, Bell, Grant 280  
W. V. TAFFNER ..... GENERAL AGENT

**PORTLAND, ORE.,** 128 Fifth St., Cor. Alder ..... Phone, Main 1660  
R. W. FOSTER ..... GENERAL AGENT

**PUEBLO, COLO.,** 204 Central Block ..... Phone, Sutter 1807  
A. S. CUTHBERTSON ..... GENERAL AGENT  
CHAS. FREUND ..... DEPOT TICKET AGENT

**QUINCY, ILL.,** 513 Hampshire St., (Quincy Hotel) ..... Phone, 540  
G. A. SHIELDS ..... GENERAL AGENT  
A. S. ELLIS ..... CITY PASSENGER AGENT

**ST. JOSEPH, MO.,** 110 South Fifth Street ..... Phone, 6 - 1160  
J. D. BAKER ..... DIVISION PASSENGER AGENT

**ST. LOUIS, MO.,** 208 North Broadway ..... Phone, Bell Main 3250  
J. G. DELAPLAINE ..... GENERAL AGENT, PASSENGER DEPT.

**SALT LAKE CITY, UTAH,** 333 Cliff Building ..... Phone, Wasatch 1504  
C. E. DENNEY ..... GENERAL AGENT

**SAN FRANCISCO, CAL.,** 90 1/2 Hearst Building ..... Phone, Sutter 1807  
H. VAN SWEARINGEN ..... GENERAL AGENT

**SEATTLE, WASH.,** 916 Alaska Building ..... Phone, Main 5678  
G. B. SMITH ..... GENERAL AGENT

**SIoux CITY, IOWA,** 516 Nebraska Street ..... Phones, Auto 4422; Bell 438  
P. J. DONOHUE ..... GENERAL AGENT

**SPOKANE, WASH.,** 905 Riverside Ave. .... Phone, Main 2337  
H. A. BRADT ..... GENERAL AGENT

**TRINIDAD, COLO.,** C. & S. Railway Station ..... Phone, Main 2762; Auto. N-7255  
S. S. SMITH ..... GENERAL AGENT

**WINNIPEG, MANITOBA,** 609 Great West Terminal Bldg., Phone, Main 7762; Auto. N-7255  
H. A. McMAHON ..... GENERAL AGENT

H. A. JOHNSON,  
Traffic Manager, Denver, Colo  
J. E. BUCKINGHAM,  
Assistant General Freight and Passenger Agent, Denver, Colo.

## Consolidated Ticket Offices

**COLORADO SPRINGS, COLO.,** 125 E. Pikes Peak Avenue ..... Phone, Main 164  
R. S. TORRINGTON ..... AGENT

**PUEBLO, COLO.,** 109 West Fourth Street ..... Phone, 1906  
S. C. BAKER ..... AGENT



**ONE DAY**

**Mountain  
Excursions**

**Picturesque  
Colorado**



**COLORADO  
AND  
SOUTHERN**

**ONE DAY**

**Mountain  
Excursions**

**Picturesque  
Colorado**



**COLORADO  
AND  
SOUTHERN**