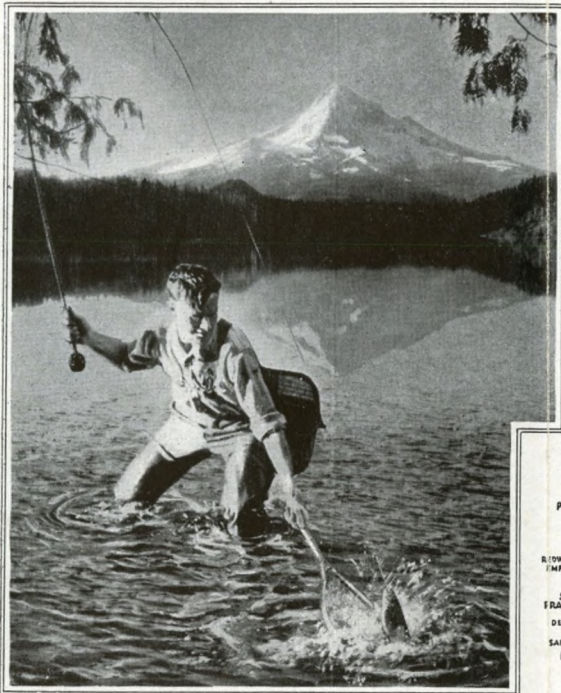
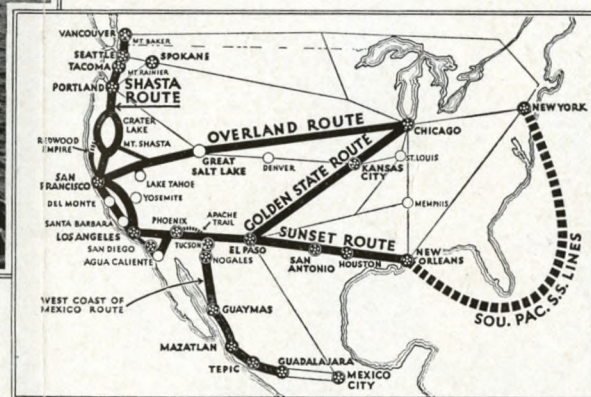


Play in . . . OREGON



*Trout Fishing in Lost Lake, Near Portland.
Mr. Hood in Background.*

A Vacation Land
of rare scenic
grandeur



Use Southern Pacific's Four Great Routes
to see all the Pacific Coast and double
the enjoyment of your trip.

OREGON OUTDOORS" is an invitation to you to visit Oregon, enjoy her delightful climate and rest and play among her glorious outdoor playgrounds.

In presenting this booklet Southern Pacific suggests to those who are starting to the Pacific Coast from middle-west, southern and eastern states the desirability of using diverse routes—that is, traveling through one section of the country on the going trip and an entirely different section on the return. Diverse route tickets are provided for this purpose. In this way the principal Pacific Coast states, cities and resorts may be visited at small expense and full convenience.

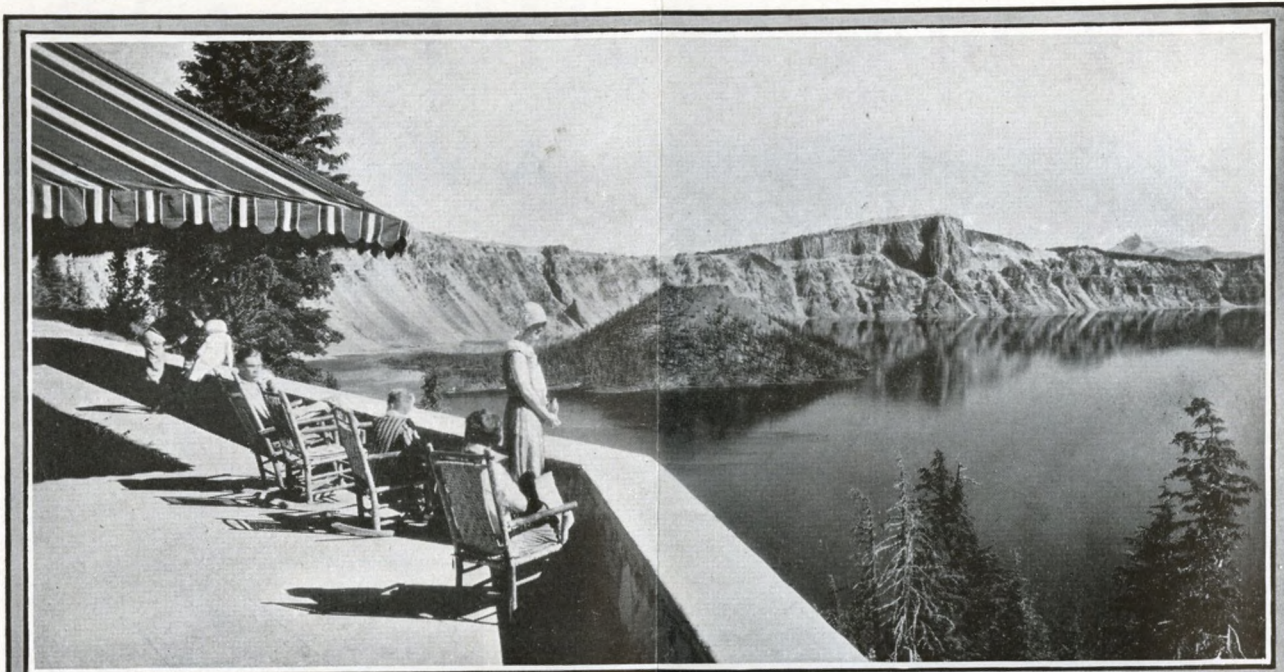
We suggest that you come west over the Sunset Route from New Orleans through Louisiana and

Texas, along the Mexican frontier, to southern California, then swing northward via Shasta Route through California, Oregon, Washington and British Columbia, returning home via northern United States or Canadian lines or reversing the order just named. Or come west over the historic Overland Route to San Francisco or the famous Golden State Route to Los Angeles, using diverse routes to insure an entire change of scenery on the homeward journey.

We commend you to the nearest Southern Pacific agent or representative. His railroad pioneered the West and serves more of it than any other railroad. He will gladly plan your trip from start to finish so that it will be a thrilling experience of lasting satisfaction. A list of the more important agencies is shown on the last page of this booklet.



CRATER LAKE, NATURE'S MYSTERY, REACHED BY SHASTA ROUTE



Crater Lake and Wizard Island from the Lodge Terrace

Cruising on the Lake

"Friends" Who Live in the Park

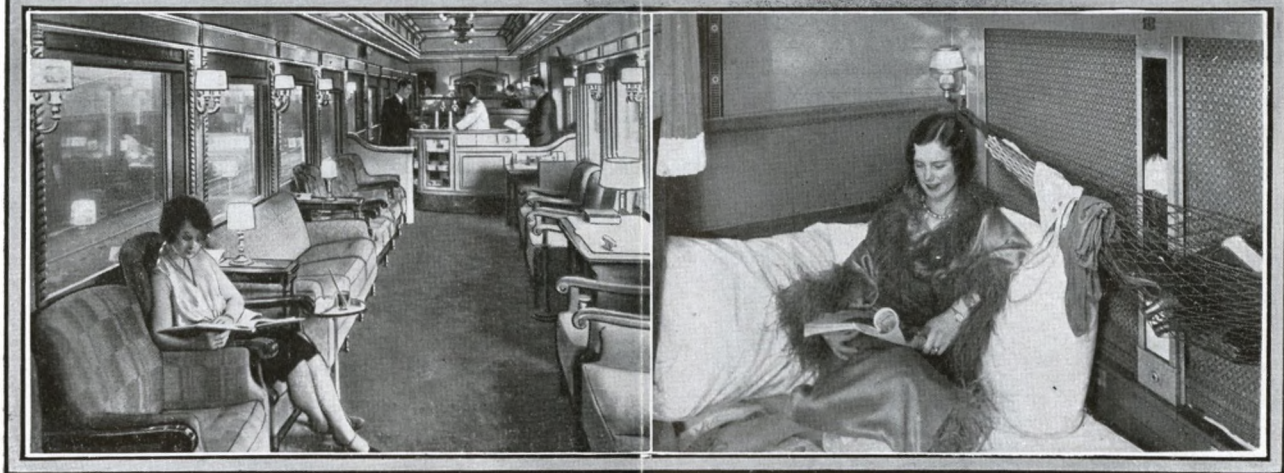
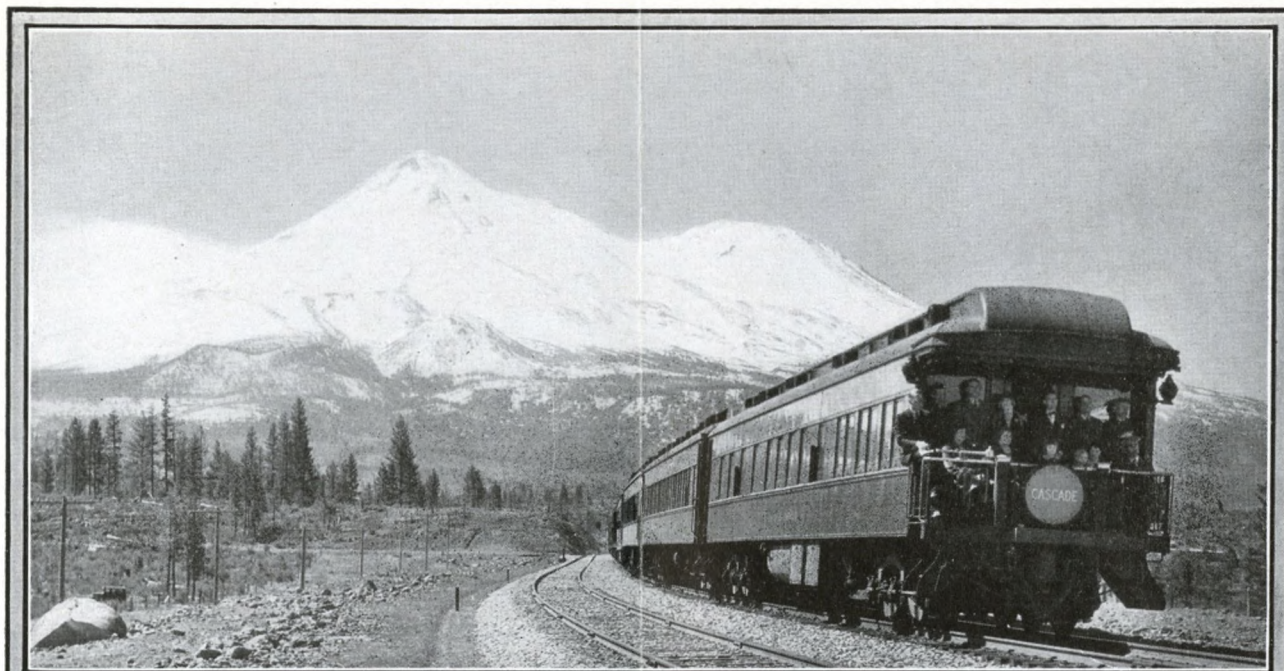
STANDING by the lodge on the south rim of Crater Lake one looks across six trackless miles of mysterious blue water, surrounded by the painted cliffs and crags of a great mountain that was wrecked. The lake is more than 1000 feet below the rim, itself from 7000 to 8000 feet above the sea, and is one of the deepest fresh water lakes on earth. In its midst is Wizard Island, a perfect volcanic cone covered with green pine trees. Comfortable power boats take

the visitor to many interesting points on the lake. Crater Lake is recognized as one of the wonders of the world. It is a geological phenomenon—colorful, romantic, fascinating and inspiring.

Visitors leave Shasta Route trains either at Medford or Klamath Falls and are then taken by automobile stages to the lake. A modern lodge, cabins, cafeteria and other accommodations, with moderate rates, are situated on the rim of the lake.



EVERY TRAVEL COMFORT IS YOURS ON THE SOUTHERN PACIFIC



*For Many Miles Shasta Route Trains Wind Around the Base of Majestic Mt. Shasta (14,161 feet)
The Lounge Car—a Pleasant Living Room*

Modern Pullmans Are Roomy and Comfortable

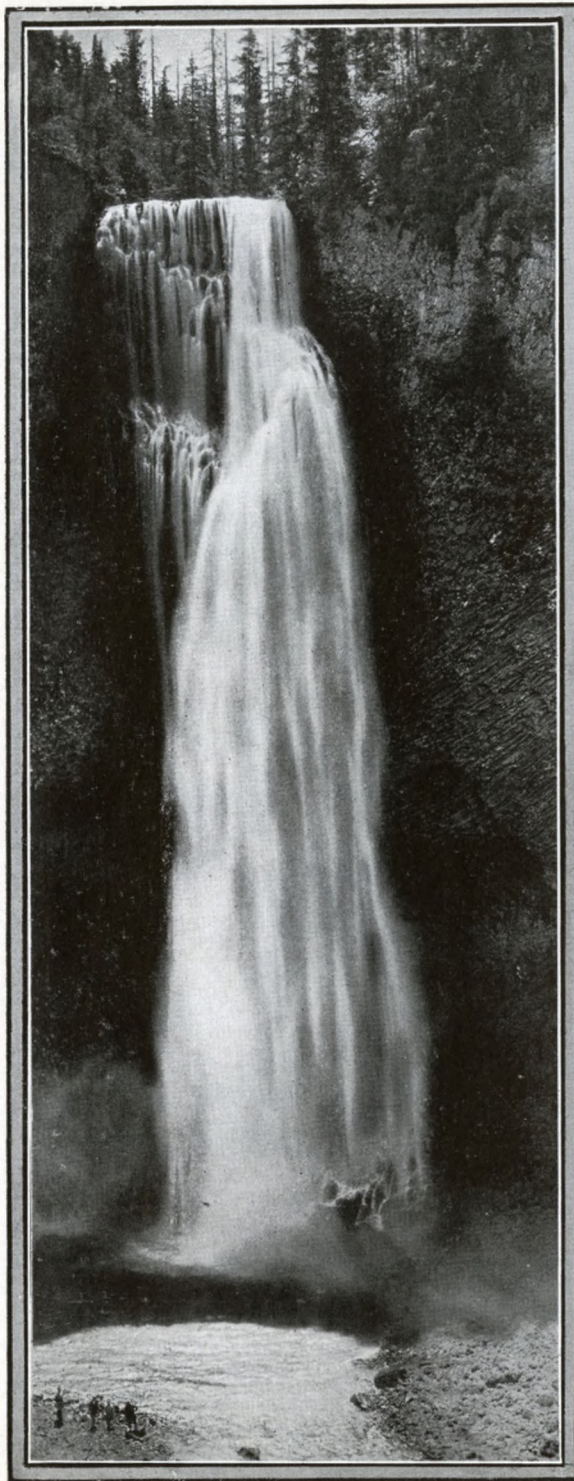
THE Shasta Route of the Southern Pacific takes the traveler along beautiful valleys, past majestic mountains, through virgin forests; beside roaring streams and placid lakes. Here are miles and miles of orchards and farms and grain fields, there a yawning canyon and ever and anon tidy, inviting cities and towns. One views this perpetual "moving picture" of northern California and western Oregon from the refinement and comfort of a swiftly moving train.

The famous "Cascade", the "West Coast", the "Shasta" and the "Klamath" furnish daily service on this line between the North Pacific Coast and California. These trains provide accommodations to suit the desires of all travelers and the schedules are so arranged as to give passengers the utmost opportunity for sight seeing and yet provide fast and dependable service between Pacific Coast points.

Locomotives burn oil. There are no cinders or dirt.



THE CASCADE LINE — ROUTE OF THE FAMOUS "CASCADE"



Left: Salt Creek Falls, a Sheer Drop of 285 Feet, Near Cascade Summit.

Above: Crescent Lake and Cowhorn Mountain.

Below: A Scene on the Willamette River.

HIGH up on the ridge of the Cascade range, at an elevation of four to five thousand feet, the Cascade line of the Southern Pacific Shasta Route passes through the glorious Cascade country.

Here every mile unfolds a new panorama of startling beauty as the train winds its way past limpid lakes; through forest fastnesses, fresh with the healing scent of pine, and along the brow of yawning canyons. Silhouetted against the sky, to challenge the imagination, are towering mountain peaks rich in legendary romance.

It looks like a great country for an outing of fishing, hunting, boating, swimming, hiking . . . and it is. The principal resorts of this area have rustic hotels or lodges, housekeeping cottages and camp grounds with boats, horses, fishing tackle and other outing equipment for hire.

OREGON — A PIONEER STATE WITH A GLORIOUS DESTINY

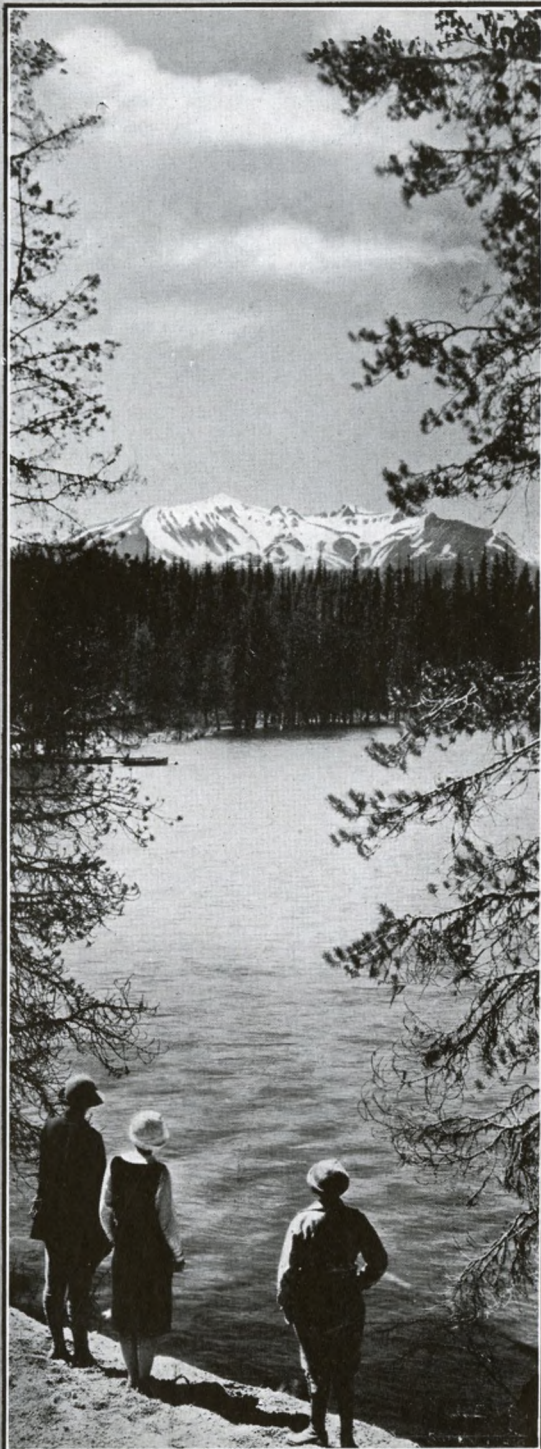


*Top: Square Lake and Three-Fingered Jack, in the Cascades.
Below: Odell Lake, as it Appears from S. P. Cascade Line.
Right: Diamond Peak.*

NOT only is Oregon a marvelous vacation land. It is a state of superb destiny—a land which in but little more than 100 years has grown from a wilderness to a land of gigantic enterprise.

The early pioneers, who beat their arduous paths across the continent to make their homes in this promised land, have lived to see great cities rear their spires into the sky; mighty streams harnessed and spanned; idle lands made to blossom; great railway and highway systems built and industry's tall stacks thrust against the skyline.

Yet Oregon's vast stores of natural resources have scarcely been touched. A vacation trip offers more than pleasure alone. It presents a view of an empire rapidly growing to take its place as one of the great commercial, industrial and agricultural areas of the world.



PORTLAND—AN IDEAL CENTER FOR TOURISTS IN THE NORTHWEST



Roses Adorn Portland Homes



The Queen's Float—Rose Festival

BEAUTIFUL for situation, Portland, the metropolis of Oregon, nestling by the Willamette River, looks towards the white cone of Mt. Hood.

Portland, a world seaport; a manufacturing and distributing center of international importance, cultivates its flower gardens and takes pride in being indeed a city of homes and fine living conditions.

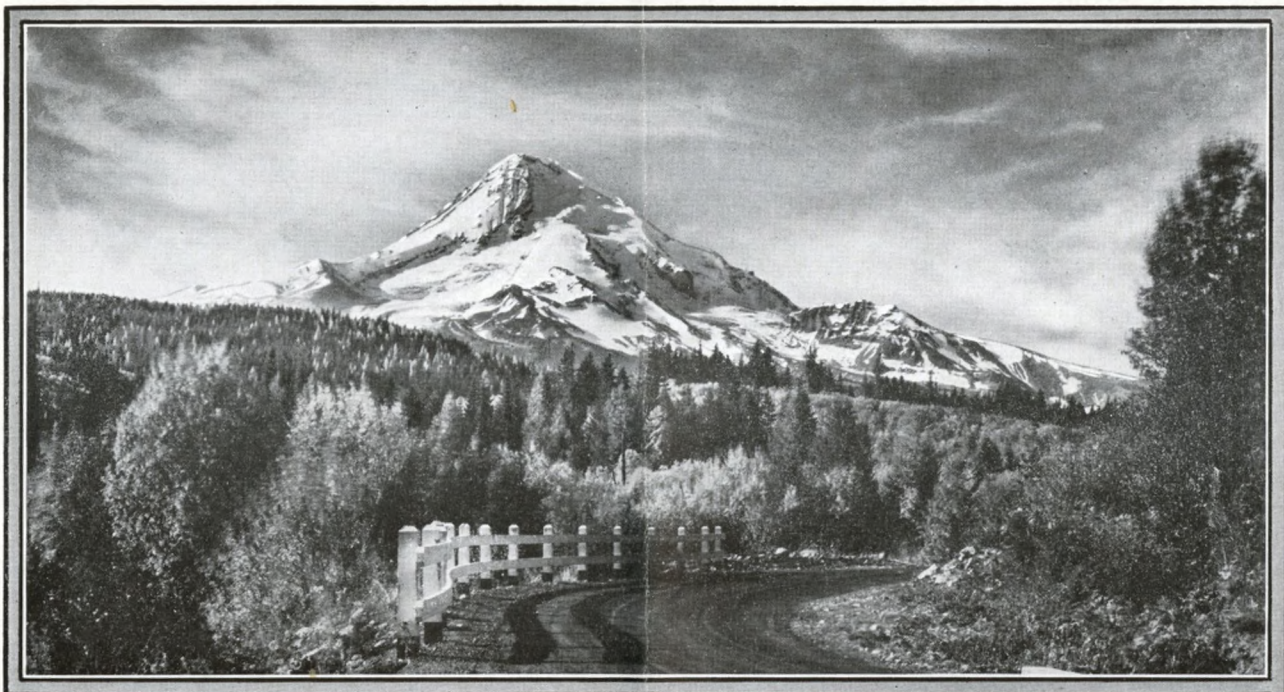
For more than a generation the citizens of Portland have idolized the rose until finally the city

has come to be known as "the City of Roses". For 24 years this homage has been put in definite form each June through the colorful Rose Festival.

Portland, in its natural setting of beauty, midway between the mountains and the sea, and the hub of a network of railroads and paved highways, offers innumerable attractions to the sightseer. Here the fine, modern hotels and comforts of a large city offer splendid tourist headquarters.



MT. HOOD AND THE SPECTACULAR COLUMBIA RIVER HIGHWAY



Above: Mt. Hood (11,225 feet) as Seen from Mt. Hood Loop Highway. At Right: Multnomah Falls, Columbia River Highway.

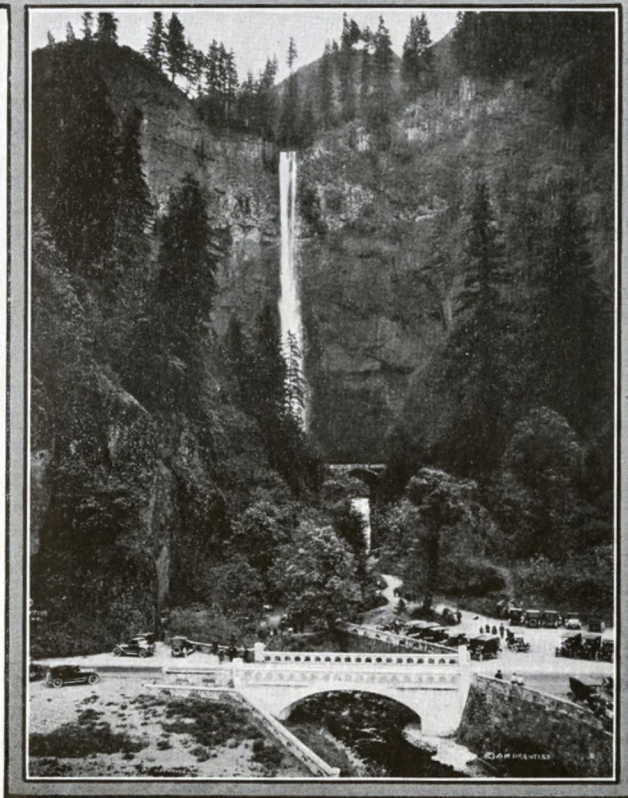
THE Columbia River Highway leads east from Portland into the gorge of the Columbia, where that great river roars its way through the Cascade range on its journey to the Pacific ocean.

Guarded by beetling cliffs and edged by filmy waterfalls this famous paved highway parallels the majestic old river, mystic with its wealth of romance woven by pioneer and Indian lore—a sight worth crossing the continent to see.

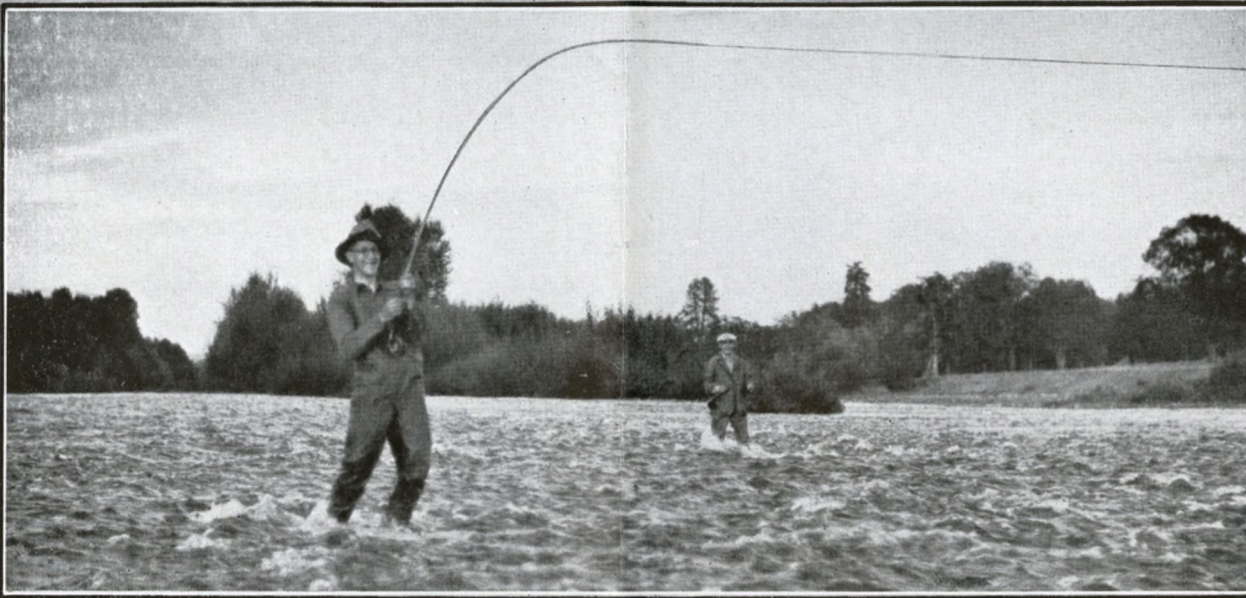
At Hood River, 69 miles east of Portland, one may turn south through the prosperous Hood River valley and encircle the base of Mt. Hood, with every turn presenting a picture of natural beauty—primeval trees, glacier-fed torrents, flower-floored meadows.

Mt. Hood contains eight living glaciers and is one of the most accessible snow-capped mountains in the west. It can be climbed from two sides and guides are always available.

The Mt. Hood area is liberally sprinkled with taverns, inns and camps and is one of the most popular all-year play-grounds in the northwest.



NO OTHER STATE PROVIDES MORE OUTDOOR LIFE THAN OREGON



Lake o' the Woods, in Southern Oregon

Hooking a Fighting Steelhead on Famous Rogue River

Diamond Lake, Famous for Rainbow Trout

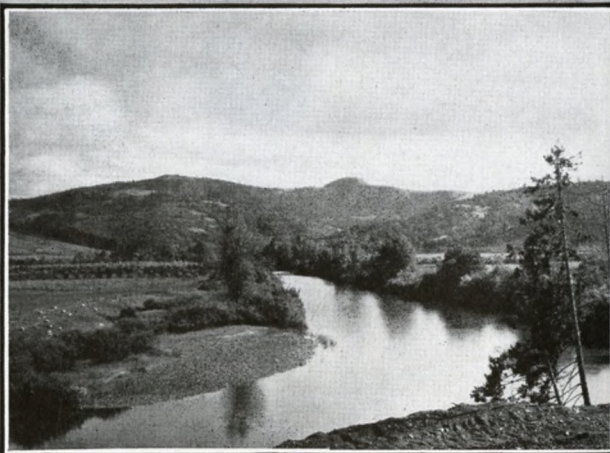
THE rivers and mountain streams of Oregon provide delightful retreats. Along many of these like the McKenzie, the Rogue, Santiam and the Willamette, resorts have been built, providing accommodations for summer travelers. Many of these resorts are served by the Southern Pacific lines or by automobile roads; others, more remote and accessible only by pack-train, await those who desire to "rough it" in the great outdoors.

The rivers, streams and lakes are well stocked with food and game fishes. The chief varieties are Western salmon, steelhead, trout, ringed perch, catfish, black bass, crappies, etc. Along the coast deep sea fishing is a popular sport.

Wild game is not as plentiful in Oregon as it was in past decades, yet in the remote fastnesses of the Cascade Range and the Coast Range is found abundant sport for hunters.



ALONG THE SISKIYOU LINE — SHASTA ROUTE IN OREGON



The Umpqua Valley

Picturesque Southern Oregon

Oregon Caves

THE Siskiyou Line of the Southern Pacific Shasta Route traverses the picturesque Umpqua Valley and the delightful Rogue River Valley in southern Oregon before crossing the Siskiyou to join the Cascade Line at Mt. Shasta's base.

Through the Cow Creek Canyon, which joins these two valleys, is presented some very delightful views of mountain and stream.

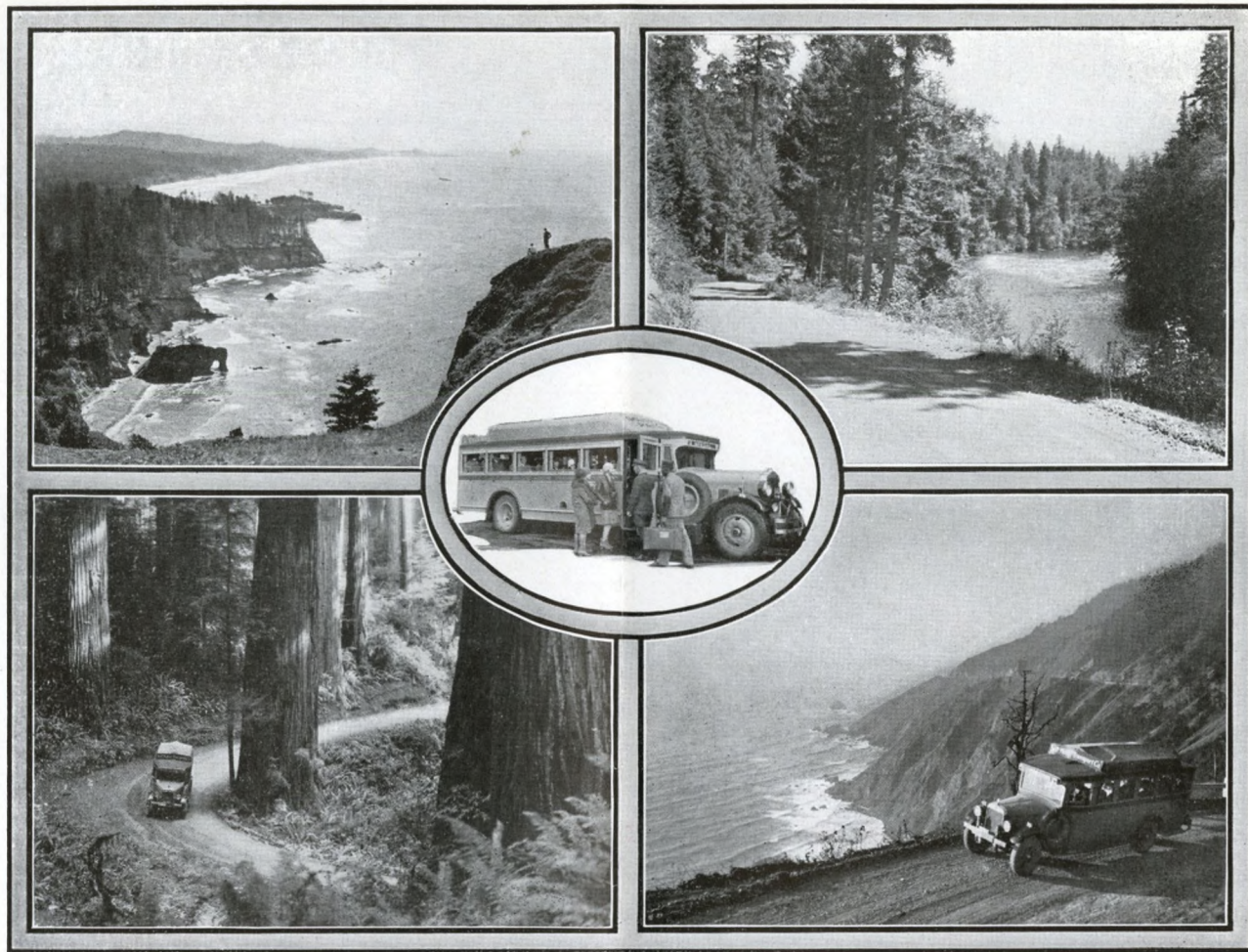
The Rogue River valley—broad, cultivated

areas and well-kept orchards, is always enticing. Encircling the valley are mountains which hold famous mineral springs, lakes, and rivers which are some of the most charming in the state.

The Oregon Caves are a series of irregular but well defined chambers, the stalactites and stalagmites of which excite the wonder and admiration of thousands annually. They are reached from Grants Pass by stages connecting with Shasta Route trains.



DELIGHTFUL MOTOR TRIPS OVER OREGON'S SCENIC HIGHWAYS



Along the Roosevelt Highway

Scenes Along the Redwood Empire Trip

McKenzie River and Highway

THE traveler over the Southern Pacific Shasta Route between the Northwest and California may now glide smoothly over splendid highways to many of Oregon's beauty spots formerly inconvenient to reach.

For example—an enjoyable day trip may be made from Portland to the Pacific Coast and the train rejoined at Albany. This trip passes through productive valleys, over the Coast Range, through evergreen woods and for 30 miles along the picturesque shore line over the Roosevelt Highway.

Other colorful trips are from Eugene through Bend to Klamath Falls. For many miles the road follows the McKenzie River, then penetrates and crosses the Cascades. The trip to Crater Lake,

leaving the train at Medford on the Siskiyou Line, returning to it at Klamath Falls on the Cascade Line, or in reverse order, is ever thrilling.

Coos Bay, thriving empire of southwestern Oregon, is reached by direct train from Portland, and motor coach from there to Roseburg, or returning by train to the main line at Eugene.

The popular Redwood Empire Tour commences at Grants Pass, passing through scenic foothills into Redwood forests, then down the coast line to Eureka. Here Northwestern Pacific train, which penetrates still farther into the Redwood Empire, is boarded for the trip to San Francisco by day or overnight. Many other similar trips may be planned and the order of those described reversed.



LET THE SOUTHERN PACIFIC AGENT PLAN YOUR TRIP

YOUR nearest Southern Pacific agent offers you travel service of the highest standard. He will be happy to make a complete itinerary of your trip from the time you leave home until you return, to guide you from day to day and hour to hour. He will give you complete information as to passenger fares, Pullman reservations, time schedules, etc. He will also attend to such details as tickets, hotel and Pullman reservations and arrange stopovers and sidetrips at scenic points. This is part of Southern Pacific service and costs you nothing. It is designed to help visitors to Oregon and the Pacific Coast enjoy the full variety and contrast of the territory traveled and to raise a visit from the ordinary process of getting from one place to another to a rich travel experience.

When you travel via Southern Pacific you place yourself in the care of a great transportation system whose representatives are in a position to route you wisely and to take care of the details of your journey

over a great expanse of territory. In planning your trip phone or write your Southern Pacific agent. A list of major agencies in the Middle West and East is shown below.



SOUTHERN PACIFIC REPRESENTATIVES

ATLANTA, GA., 815 Volunteer Bldg. D. Asbury, *General Agent*
 BALTIMORE, MD., 214 Baltimore Life Bldg. . . W. B. Johnson, *General Agent*
 BIRMINGHAM, ALA., 203-8 Empire Bldg. S. J. Brown, *General Agent*
 BOSTON, MASS., 294 Washington St., Rm. 209. . E. S. Leavitt, *General Agent*
 BUFFALO, N. Y., 297 Main St. G. H. Vogel, *General Agent*
 CHICAGO, ILL., 77 East Jackson Blvd.
 J. H. Desherow, *General Agent, Passenger Dept.*
 CINCINNATI, OHIO, 408 Traction Bldg. Robt. McDowell, *General Agent*
 CLEVELAND, OHIO, 1116 Hippodrome Bldg. . . . E. G. Cook, *General Agent*
 DENVER, COLO., 828 17th St. E. H. Williams, *General Agent*
 DETROIT, MICH., 205-7 Majestic Bldg. L. H. Trimble, *General Agent*
 INDIANAPOLIS, IND., 11 South Meridian St. . . . E. Z. Giblon, *General Agent*
 KANSAS CITY, MO., 705 Walnut St. F. W. Sedgwick, *General Agent*
 LOUISVILLE, KY., 296 Starks Bldg. W. J. Kinney, *Dist. Frt. and Pass. Agt.*
 MEMPHIS, TENN., 716 Exchange Bldg. C. A. Bevis, *General Agent*
 MEXICO CITY, MEX., Avenida Cinco de Mayo, No. 7
 F. V. Stark, *Assistant Traffic Manager*

MINNEAPOLIS, MINN., 125 South Third St. . . . R. K. Smith, *General Agent*
 MONTERREY, MEX., Langstroth Bldg.
 Alfonso Marquez, *General Agent for North Mexico*
 NEW YORK, N. Y., 535 5th Ave. (at 44th), Room 1012
 H. H. Gray, *General Eastern Passenger Agent*
 John N. Field, *District Passenger Agent*
 NEW YORK, N. Y., 531 5th Ave. (at 44th St.)—Sou. Pac. Uptown Ticket
 Office W. J. Hanrahan, *City Passenger and Ticket Agent*
 NEW YORK, N. Y., 165 Broadway, Room 2015—Sou. Pac. Downtown
 Ticket Office L. E. Kuhrt, *Ticket Agent*
 OKLAHOMA CITY, OKLA., 116 No. Robinson St. . J. A. Eads, *General Agent*
 PHILADELPHIA, PA., 111 South 15th St. F. T. Brooks, *General Agent*
 PITTSBURGH, PA., 355 Fifth Ave. H. F. Starke, *General Agent*
 SALT LAKE CITY, UTAH, 41 South Main St. . . . D. R. Owen, *General Agent*
 SEATTLE, WASH., 1405 Fourth Ave. B. C. TAYLOR, *General Agent*
 ST. LOUIS, MO., 308 No. 6th St. L. B. Banks, *General Agent*
 WASHINGTON, D. C., 301 Shoreham Bldg. A. A. Price, *City Passenger Agent*

E. W. CLAPP, *General Passenger Traffic Manager*, San Francisco, Cal.
 F. C. LATHROP, *Passenger Traffic Manager*, San Francisco, Cal.
 C. L. McFAUL, *Passenger Traffic Manager*, Los Angeles, Cal.
 J. A. ORMANDY, *Passenger Traffic Manager*, Portland, Ore.
 J. D. MASON, *General Passenger Agent*, El Paso, Texas
 J. H. McCLURE, *General Freight and Passenger Agent*, Phoenix, Ariz.
 J. T. MONROE, *Pass. Traffic Mgr.*, Tex. and La. Lines, Houston, Texas
 F. S. MCGINNIS, *Vice President, System Passenger Traffic*, San Francisco, Cal., and Houston, Texas

O. P. BARTLETT, *Passenger Traffic Manager*, Chicago, Ill.
 WILLIAM SIMMONS, *Traffic Mgr.*, Sou. Pac. Steamship Lines, New York, N.Y.
 J. C. GILPIN, *Gen. Pass. Agent*, Sou. Pac. Steamship Lines, New York, N.Y.
 L. G. HOFF, *Traffic Manager*, Mexican Lines, Guadalajara, Mex.
 C. S. FAY, *Vice Pres. and Traffic Mgr.*, Tex. and La. Lines, Houston, Texas
 W. C. McCORMICK, *General Passenger Agent*, New Orleans, La.

OREGON OUTDOORS

OREGON OUTDOORS



SOUTHERN PACIFIC LINES

SOUTHERN PACIFIC LINES