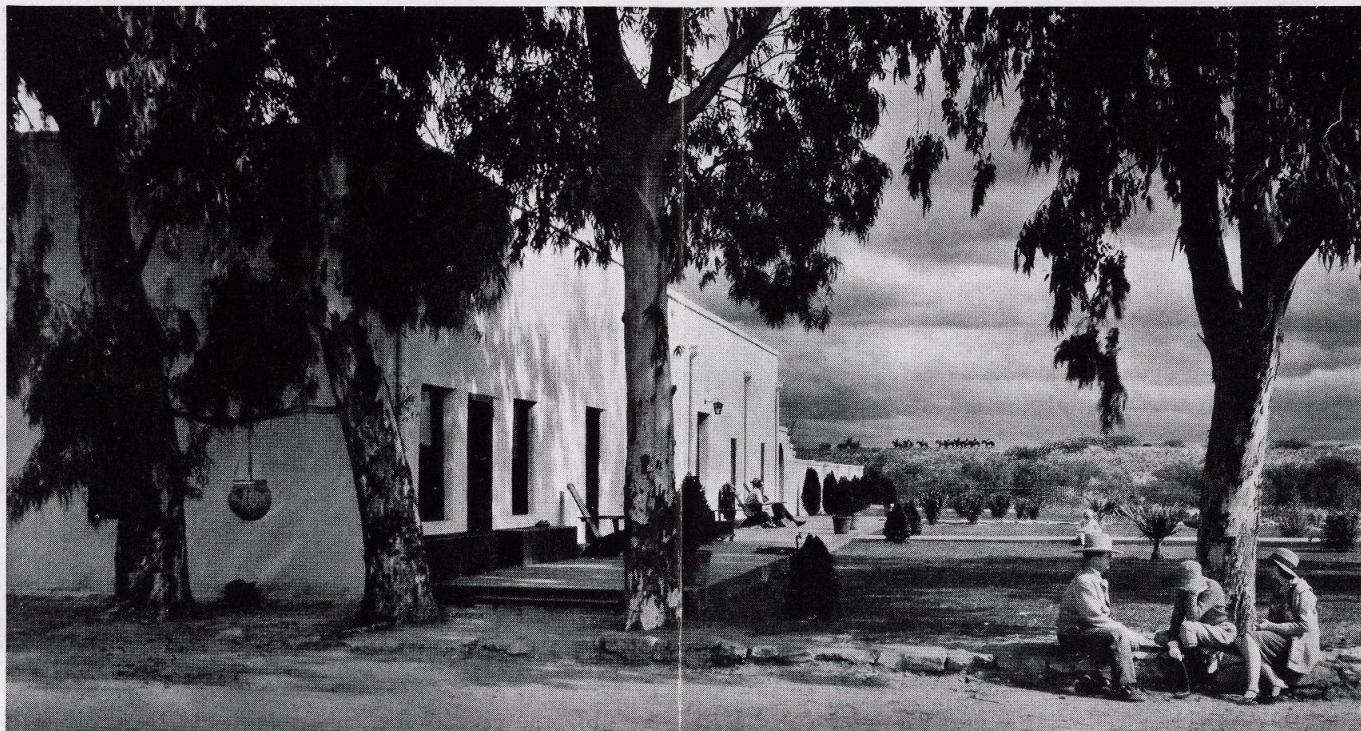


ONLY SOUTHERN PACIFIC PROVIDES DIRECT MAIN LINE SERVICE



## *Southern Arizona for the Traveler and Vacationist*

FOR the traveler and vacationist Southern Arizona is a land of enchantment. Rich in scenic variety, in human and historic interest, and in Indian and Spanish lore, this region has a charm peculiarly its own.

In the limited space of this booklet it is possible only to suggest some of the many interesting ways in which the visitor may spend happy days in Southern Arizona—"America's Winter Playground."

Southern Pacific's Sunset Route (New York-New Orleans-Los Angeles-San Francisco) and Golden State Route (Chicago-Southern California) traverse Southern Arizona, providing the only direct main line service to this region. Through trains run directly to Phoenix, Chandler, Tucson, Douglas, Yuma and other Southern Arizona cities—saving many hours, with no change of cars en route.

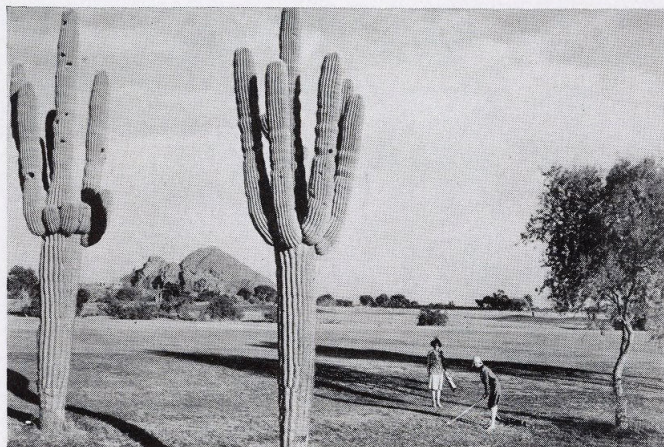
The traveler to Southern Arizona using Southern

Pacific Lines may enjoy the fine appointments and service of such fast transcontinental trains as the "Sunset Limited" and the "Golden State Limited" direct to his destination.

On the center pages of this booklet is a picture map in color showing, among other things of interest, Southern Pacific's main lines and connections in Southern Arizona.

Southern Arizona is one of the few remaining vast open spaces for which the Old West was famed—there is still plenty of room in Arizona. The recreational possibilities have been little developed until very recent years because Arizonans were busy pioneering and developing. Now, however, Arizona is prepared to entertain.

For those who wish to live in the open in real old-west atmosphere, there are the guest ranches of



*Golf all winter long on sporty courses*



*Polo on the University of Arizona field*



*Motor boating past painted cliffs on Canyon Lake*

Southern Arizona. These are real ranches, cowboys and all, picturesquely located in the mountains. Most of them are described on pages 6 to 13 of this booklet.

Then, too, Southern Arizona has developed a new type of inn—the “mesa hotel.” The first of these, at Chandler, was followed by great hostleries at Tucson, Phoenix and Nogales, in a setting of giant cactus, mesquite and buttes. There are, of course, good commercial hotels in the larger towns, and desert sanitariums for health seekers. Principal hotels in Southern Arizona are listed on page 14 of this booklet.

OUT from the cities are high mountains, many of them heavily forested, with fine fishing streams. Trout are abundant. Hunting is good, both on the mesas and in the mountains. The game includes mountain lion, deer, bear, lobo wolves, mountain sheep, wild turkey, wild hogs, quail, doves, pigeons and a variety of smaller animals and birds. Many tourists, passing through Arizona, marvel at the sharp and colorful buttes that rise so abruptly out of the mesas, not realizing that many of these buttes are high forested mountains down whose sides flow trout streams.

Good roads connect the main railway terminals of Southern Arizona with points of interest. In addition to the Apache Trail highway trip, between Globe and Phoenix, there are other tours operating out of Phoenix, Tucson and Douglas at reasonable rates. A popular rail trip is to Nogales, south of Tucson, a quaint city divided along the center of its main street by the Mexican Border. Agua Prieta and Algodones are similar but smaller Mexican towns adjoining, respectively, Douglas and Yuma.

SOUTHERN ARIZONA has been called “America’s Sun Parlor.” To the person wearied of the discomforts of eastern winters, it offers the magic of balmy winter days, azure skies and smiling sun, where life is enjoyed outdoors the year round. While much of the United States is in the grip of winter, Southern Arizona is enjoying its finest weather, with dry, balmy, sunshiny days.

Southern Arizona averages over 325 sunshiny days per year. Most of the rainfall is in late summer and fall.

## A WEALTH OF OUT-DOOR RECREATION FOR THE VACATIONIST

Wintertime on the magic mesas is balmy and pleasant, not hot. The dry air is invigorating, conducive to recreation.

Arizona's high altitudes are above 12,000 feet, yet one of her greatest valleys is but 100 feet above sea level. This accounts for the wide range of climate—tropical in the lowlands, temperate on the mesas, and cool in the mountains. In the state are found practically all flora and fauna native to North America.

Arizona's geography should be kept in mind in planning a winter outing in the state. Northern Arizona, with high altitudes, has a Rocky Mountain winter, with snows and winter sports. The mesa country described in this booklet is a belt 100 to 300 miles wide across Southern Arizona, from 1,000 to 3,000 feet in altitude. On these mesas, in this temperate zone, is found the bulk of Arizona's population, as well as the cities of Phoenix and Tucson, and other winter resort centers. Here is found a wealth of recreations, including motoring, exploring, horseback riding, hiking, golfing, tennis, boating, mountain climbing, fishing, hunting, swimming, and, not to overlook a pastime popular on the mesas, desert picnicking.

Southern Pacific agents or secretaries of Chambers of Commerce listed on page 15 are at the service of prospective winter visitors to assist in locating exactly the accommodations desired.

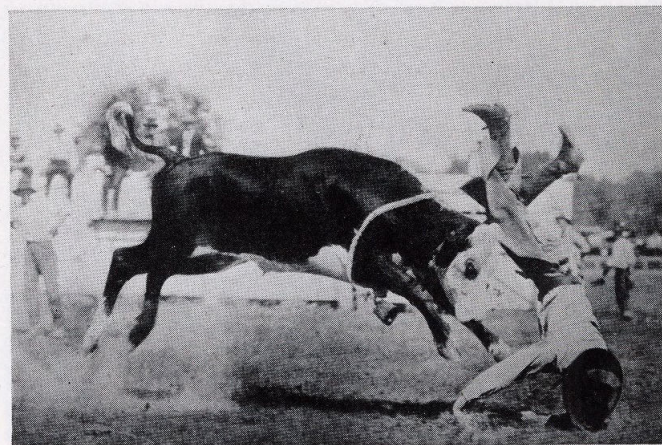
THROUGHOUT Southern Arizona are found many ruins of ancient races whose story antedates any recorded history. Exploring among these ruins is a fascinating pastime. Many a winter visitor has discovered relics to aid in the unraveling of the history of the ancients who lived there.

In the mountains adjacent to the Apache Trail highway are strange cliff dwellings, cut high in the face of the cliffs. Coronado and his men, marching through Arizona in the 16th Century in search of the Seven Cities of Cibola, saw these cliff dwellings, even then in ruins.

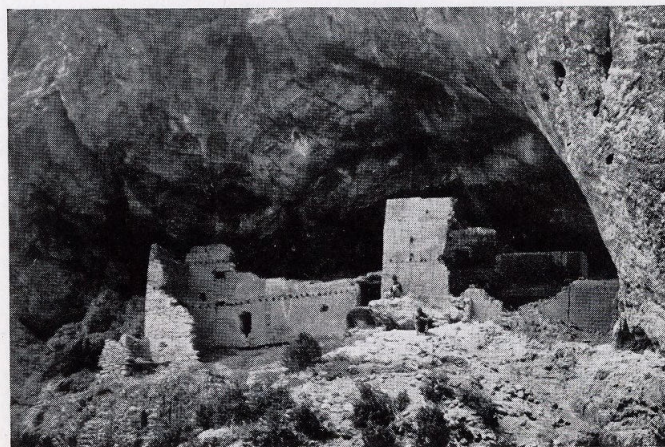
The history of Casa Grande ("Big House") Ruins, now a national monument, is also unrecorded, but excavations have brought forth many objects revealing a civilization different from that of the race inhabiting



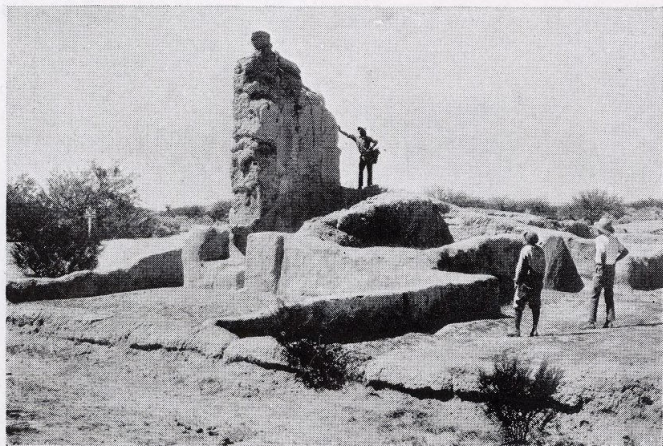
*Off for a morning's jaunt at one of the Guest Ranches*



*Real cowboys thrill you at Arizona rodeos*



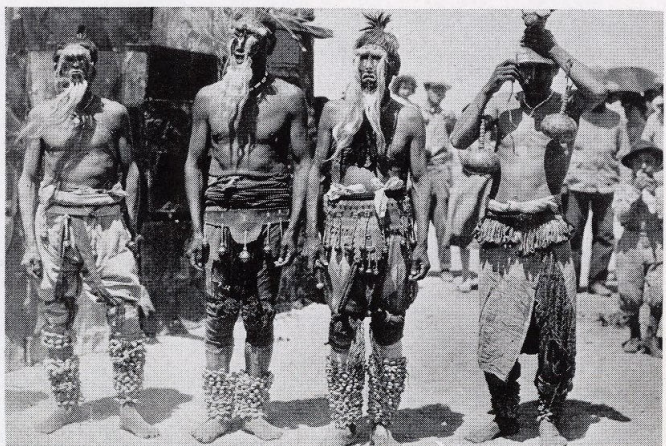
*Cliff dwellings—home of a vanished race*



*Casa Grande ruins, evidence of a prehistoric civilization*



*Mission San Xavier, built by the Padres in 1767*



*Yaqui Indian dancers in their unique Easter ritual*

the cliffs. The people of Casa Grande tilled the soil and had well designed systems of irrigation. A pageant, based upon what is known of this people, is given annually at the ruins by several hundred actors. Casa Grande Ruins are located between Coolidge and Casa Grande on the main line of Southern Pacific from Tucson to Phoenix.

The Colossal Cave of Tucson has never been fully explored, but a scientific party has traversed its twisting, winding way for a distance of 27 miles. This cave's history is closely identified with frontier days—outlaws, train robberies, hidden gold and gunplay.

The ruins of Fort Lowell, a frontier outpost, though abandoned in 1884, still stand in fair preservation a scant ten miles from Tucson.

Tumacacori Mission, near Nogales, mute reminder of those priests who tramped afoot from Mexico, is a national monument and in an excellent state of preservation.

The Mission San Xavier del Bac, founded by Padres Kino and Salvatierra in 1767, is half an hour's drive from Tucson, on the Papago Indian reservation. From the time it was founded its doors have never been closed; today its vesper bells peal forth, nuns tell their rosaries, and the Fathers chant the mass—just as they have been doing daily for nearly two hundred years.

At Tucson and Phoenix old-west rodeos are staged annually, the best and foremost riders from all parts of the country coming to participate. Thousands are in daily attendance, rivalry between performers is keen, and many thrills are provided spectators.

Around the Easter season the Yaqui Indians in their village near Tucson hold their Easter dance, a primitive form of Passion Play, which runs continuously for three days. It is not given as entertainment, but is a religious service held in the open which visitors are permitted to witness.

The quaint costumes of the dancers—homemade of brightly colored materials—the droning of the priests chanting a half-understood litany, the beat of tom-toms, the weirdly plaintive singing of the women while the

## THE FAMOUS APACHE TRAIL HIGHWAY OF ARIZONA

dancers parade and twirl and prance, ever advancing or retreating, throughout the day and far into the night—all go to make a scene that will be etched in memory.

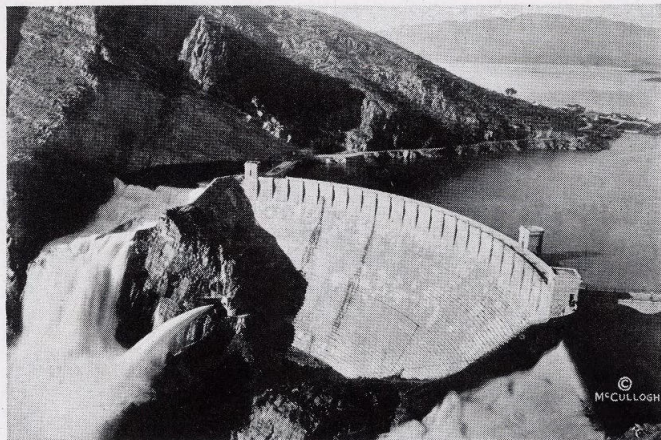
SPREADING before the traveler's eyes the most picturesque features of Southern Arizona, the 120-mile trip by motor coach over the Apache Trail highway between Globe and Phoenix is the high spot for travelers over Southern Pacific's Sunset and Golden State Routes. It requires but one extra day and involves but slight additional expense to include this trip. Many who take it choose to spend several days along this route, where are concentrated in one small area the fire-belching copper mining plants of Globe, the painted cliffs of the Pinal and Apache Mountains, a forest of giant cactus, the strange Tonto Cliff Dwellings, four huge dams, Roosevelt, Apache, Canyon and Sahuaro Lakes, a trip down to the desert and over the broad highway to the ever-verdant Salt River Valley, where nestles Phoenix, busy capital of Arizona. Southern Pacific is making free distribution of its booklet "The Apache Trail Highway." You may get a copy from any Southern Pacific agent listed on page 15 of this booklet.

CHIRICAHUA NATIONAL MONUMENT, popularly known as the "Wonderland of Rocks," comprises three canyons, embracing an area of fifteen square miles. Access is gained by automobile from either Douglas or Willcox to Faraway Ranch, where horses and guides are obtained; also by automobile, from Rodeo, N. M.

The rocks, of rhyolite, have been worn through the centuries by wind and water to startlingly close resemblances of men, animals, totem poles, bridges, etc. The whole area is crowded with palisades and pinnacles.

In one of the canyons natural caves have been found with, as yet, undecipherable hieroglyphics of undoubted prehistoric origin.

Fourteen miles from Tucson are the Picture Rocks, a large hill of stone surface covered with petroglyphs and crude pictures of men and beasts. No authentic interpretation of these pictures has ever been made, and it is a matter of conjecture whether they were made by Indians or prehistoric man.



*Roosevelt Dam and Lake on the Apache Trail Highway*



*Chiricahua National Monument—"Wonderland of Rocks"*



*Picture Rocks, carved with legends that await a translator*



## *Guest Ranches of Southern Arizona*

LIFE on a ranch is altogether what the visitor may wish to make it. It may be "the sweet pleasure of doing nothing," with restful, lazy hours, spent, book in hand, at the ranch house, in one's own cabin, or beneath the shade of some old forest monarch. One may drowse and dream, or, as the old prospector put it, "jest drowse." On the other hand, it may be as active an existence as any one could wish. One may join the cowboys as they canter off into the hills or down into the valleys in the course of their daily work; or, with canteen and lunch, ride alone or with a party on mountain picnics or excursions of exploration.

On every ranch the chief diversion, naturally, is horseback riding. At most ranches the guest is assigned, immediately upon his arrival, a mount and equipment for his exclusive use so long as he remains. The experience of the rider is carefully considered and his horse furnished according thereto. For those who have not

ridden before, mounts docile enough to reassure the most timid are supplied. For the guest who likes them spirited, and can handle them, horses are available that will test his prowess in the saddle.

Some ranches have tennis courts, putting greens and a few holes of practice golf. Others have swimming pools, target ranges, and other entertainment.

Usually, after a day on the range or in the hills, the thoughts of bed and repose fill the mind to the exclusion of most other matters, and shortly after dinner one is usually well content to "call it a day" and to seek the deep and dreamless sleep that comes to tired bodies and relaxed nerves. However, if one is inclined to play in the evening, there are cards and dancing. Often a picnic by moonlight is arranged, where the guests gather around a roaring campfire and listen to some old timer spin yarns of the old romantic west.

While all of the guest ranches are alike in a general sense, yet each has its own personality and its individual attractions.

Some of the ranches are genuine old-time cattle ranches, still running herds that number into the thousands. Others are old ranches on which cattle are no longer raised. Still others are modern plants, built at the most advantageous points for the definite purpose of entertaining the tourist who wishes to "rough it" de luxe. There is a place to suit everybody, no matter what his taste, and all of them are characterized by the open western hospitality and good fellowship that makes the guest feel like a native as soon as he arrives.

Most of the Southern Arizona guest ranches are located in the mountains, at an elevation of from 3,000 to 6,000 feet, forested with poplar, palo verde, manzanita, oak and pine. By reason of the altitude, the days in winter are clear, bracing and stimulating; the nights are cold, and a fire in the big, open, friendly fireplace is often needed.

There is little style about a guest ranch and the atmosphere is essentially democratic. Many changes of outer clothing are not necessary. For women, medium weight riding habits, walking skirts, sweaters and the usual outdoor clothes worn in eastern mountains. Men wear riding breeches, chaparejos or blue jeans, flannel shirts, etc. Everyone should be provided with leather jacket, coat or sweater for wear after sunset, and a flashlight. In general, comfort is aimed at, rather than style. (Large trunks should not be taken).

In the pages following is given a brief description of some of the guest ranches of Southern Arizona. This information has been secured by Southern Pacific direct from the ranches, and while accurate at time of printing this booklet, is, of course, subject to change. All of the ranches described issue attractive literature containing complete information, and it is suggested that the prospective visitor write them direct for same.

The capacity of all ranches is limited, and as accommodations are usually in demand, advance reservations should be made by communicating with the management direct. Map on page 13 indicates location of ranches and station on Southern Pacific from which each is reached.

### *Old Homestead Ranch*

Mrs. C. A. Weiler, Route 5, Box 343, Phoenix. Take Southern Pacific to Phoenix, where guests are met by ranch car. Four miles from Phoenix station. Ranch house in center of citrus orchard, which provides fruit for guests throughout winter. Usual ranch activities indulged in; guests are also able to visit theatres, shops, etc., of Phoenix. Ten guests can be accommodated. Equipped with electric light, private baths, hot and cold water. Rates \$40 a week. Horses \$3 a day extra. Season October 1 to May 1.

### *Jokake Ranch*

Address, Jokake, Scottsdale, Arizona. Take Southern Pacific to Phoenix. A guest ranch and winter hotel, ten miles from Phoenix and just outside the irrigated section of Salt River Valley, in a beautiful desert location. Camelback Mountain rises directly behind Jokake. Plastered adobe buildings are warm and comfortable. Sunny patios and gardens. Atmosphere of the old Southwest. Accommodations for about 50 guests. All rooms have private bath. Competent women cooks; plenty of fresh vegetables are provided. Excellent horses, swimming pool, croquet grounds and tennis court. Only 15 minutes' drive to good golf course. Rates on application.

### *Faraway Ranch*

Ed. Riggs, Manager, Dos Cabezas. Take Southern Pacific to Willcox, where guests having reservation will be met by automobile. Faraway Ranch is located in very heart of Chiricahua Mountains; Chiricahua National Monument is one of nature's greatest marvels. Horseback trips are made to many points of interest. Guests are housed in main ranch house and adjoining cottages. Swimming pool. Rates \$25 a week. American plan. Horses \$22.50 a month extra. Special rates for short trips. Open all year.

### *Bar O Ranch*

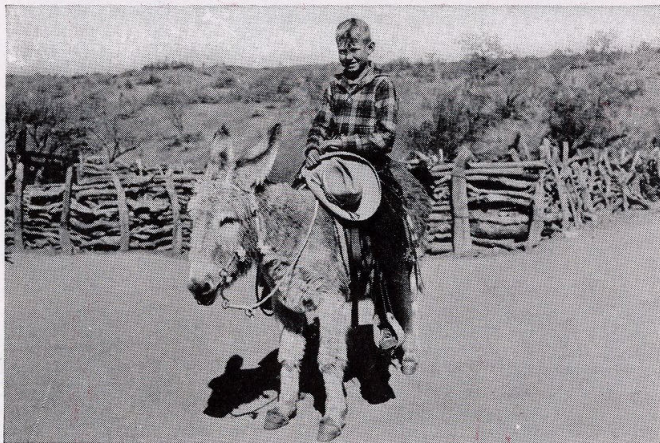
Harry C. Kendall, owner, Tombstone. Comprises twenty miles of mountain and valley located against Dragoon Mountains at elevation of 5,500 feet, overlooking San Pedro Valley commanding unsurpassed distant mountain view. One of oldest cattle ranches in country; is still actively engaged in that business, thus affording guests an opportunity to participate in real cowboy fashion. This is hunting ground of old Apache Indian Chief "Cochise"; Cochise Stronghold, where he made his last stand, is only a day's ride away. Take Southern Pacific to either Benson or Fairbanks, where train is met by ranch car, on advance notice. Capacity 15 guests, who occupy bunk houses in grove of live oaks. Rates \$50 a week, \$150 a month, including use of horse. Open year round.

ONLY SOUTHERN PACIFIC OFFERS TRANSCONTINENTAL





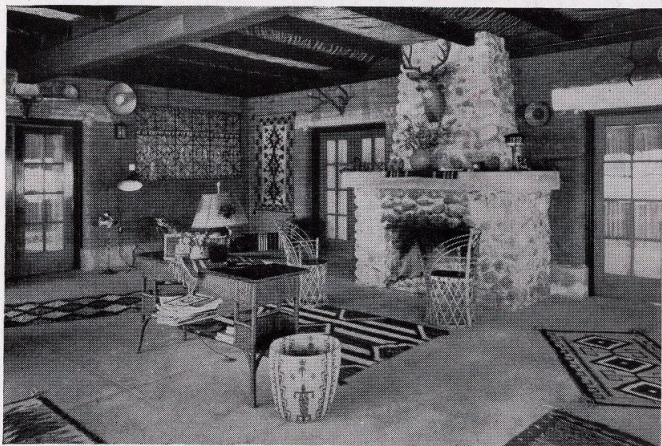




*Youngsters get the thrill of the Wild West*



*Gathered around an open fireplace to talk over the day's adventures*



*Cheerful living rooms furnished in western style*

### *Circle Z Ranch*

Address, Zinsmeister Ranch Co., Patagonia. Take Southern Pacific to Nogales, where guests are met and transported to ranch, 17 miles distant. Offers every convenience of city home, together with all attractions of ranch life. Guests are housed in bungalows of four rooms and two baths, containing tub, shower, and toilet, or rooms with private baths. Electric lights, steam heat, hot and cold water. Tennis court, putting green, target range, swimming pool. Located in Patagonia Mountains, altitude 4,000 feet, amid most beautiful surroundings. Rates \$60 a week and up; this includes everything ranch has to offer except personal laundry. Season, October 1 to May 1.

### *Rancho Linda Vista*

Geo. S. Wilson, Manager, Oracle. Take Southern Pacific to Tucson. Located 37 miles north of Tucson, and 2 miles from beautiful little mountain village of Oracle, in Catalina Mountains. Ranch also maintains camp in the Canada del Oro (Canyon of Gold) a few miles farther up in mountains. Here Harold Bell Wright wrote "The Mine With the Iron Door". Camp is used as base for hunting trips for bear, wolves, and lion. Linda Vista is regular cattle ranch; many an impromptu wild west show is staged in course of day's work. Accommodations for 45 to 50 guests, who are housed in modern cottages, each with its own bathroom and hot and cold water. Open year round. Rates, double room \$35 a week, \$135 a month. Single room \$40 a week, \$150 a month. Horses \$15 a week, \$50 a month.

### *Tanque Verde Ranch*

Jas. P. Converse, Manager, Tucson. Take Southern Pacific to Tucson, where, by appointment, guests will be met. Ranch is located twenty miles east of Tucson on the edge of desert in foothills of Rincon Mountains. Comfortable accommodations, wholesome food. Rates on application.

### *Hacienda De La Osa*

Address, Hacienda de la Osa, Tucson. Take Southern Pacific to Tucson. Located in Sasabe Valley between Mesa Verde and Santa Rita Mountains, 68 miles southwest of Tucson and one mile from Mexican border. Elevation 3,500 feet. One of oldest ranches in Arizona, retaining the spirit and romance of the old West. Plenty of big game, deep sea fishing in Old Mexico. Guides and camping equipment may be arranged for. Ranch house has beautiful patios. Rates \$60 a week and up. Includes all expenses except personal laundry, special motor and hunting trips. Open year round.

### *Y Lightning Ranch*

F. B. Moson, owner, Hereford. Six miles from Hereford station on Southern Pacific. Consists of 25,000 acres, situated on gently sloping mesa of San Pedro Valley. Elevation 4,880 feet. Three miles away are heavily-wooded Huachuca Mountains. Hunting trips can be arranged, and visits to Naco, and to Agua Prieta, just across border in Old Mexico, with their attendant Bohemian atmosphere. Essentially a cattle ranch; is in no sense a hotel, but guests will find every comfort commensurate with life on modern high-class ranch. Guests occupy single and double cabins, comfortably furnished, with gas light, heating stoves and running water. Ranch has modern bathing facilities and hot water at all hours. Rates \$50 a week. Season October 15 to May 15.

### *El Coronado Ranch and School*

R. E. Souers, Headmaster and Manager. Address Box 1158, Douglas. In Chiricahua Mountains on Turkey Creek, 60 miles from Douglas, and 34 miles from Willcox, on Southern Pacific. Guest ranch and school for boys between ages of 14 and 19. Offers regular college preparatory schedule. Housing facilities and equipment among finest in Southwest. All rooms have private bath, running water and electric lights. Game rooms, large lobby, large swimming pool and tennis court. Horses and mountain trips. Limited facilities for adult guests. School rates \$200 per month; guest rates \$8 per day. Open all year.

### *Fresnal Ranch*

Bryan F. Peters, owner, Tucson. Take Southern Pacific to Tucson. Ranch is located in the Baboquivari Mountains at elevation of 4,000 feet, 52 miles southwest of Tucson. Ranch school for boys and young men between 15 and 25 years of age. Comfortable, healthful quarters, wholesome food. Fees from \$200 a month, including horse and saddle equipment.

### *Flying V Ranch*

E. G. Furfey, manager, Box 476, Tucson. Take Southern Pacific to Tucson. In beautiful Catalina Mountains, 14 miles northeast of Tucson. Cottages are built of stone, each cottage having two rooms with private bath; each room has outside entry and can be used singly or ensuite of two. All bedrooms have hardwood floors. Is combination guest and cattle ranch. Close proximity of Tucson enables guests to remain at home an hour after dinner and then have ample time to attend any evening amusement in Tucson. Plenty of fresh eggs and vegetables. Accommodations for 25 guests. Rates \$65 a week, including saddle horse. Open year round.



*On many guest ranches you can join in a real cattle roundup*



*A guest ranch swimming pool, New Mexico*

### *C Bar Ranch*

Mrs. Wilfred A. Fiege, Dragoon. Take Southern Pacific to Dragoon; ranch is only five miles from station. Altitude 5,000 feet, in Dragoon Mountains. Is old established cattle ranch with more than half a century of development behind it. Interesting pastime for those who enjoy pursuit of adventure is provided by large mines of Johnson mining district, two miles north of ranch, most of which are inactive now and may be explored under watchful eye of a guide. Twenty miles southeast is famous Cochise Stronghold, natural fortress of the Apaches in early days, while to north one may visit the Isaacson Hot Springs as well as Wildcat Canyon and Box Canyon with its giant sycamores and pines. Rates \$35 a week. Use of private mount \$10 a week additional.

### *Carr's Ranch*

Globe. Take Southern Pacific to Globe. In Sierra Ancha Mountains, 55 miles from Globe. Elevation 3,900 feet. In the pines. Accommodations to feed any number of people and attractive cabins provide sleeping quarters for 40 persons. For those desiring to bring outfits for camping there are beautiful sites and a store and meat market on ranch. Stage from Globe makes two trips a week carrying mail, passengers and merchandise. Rates \$21 a week.

### *Lone Wolf Lodge*

Springerville. Take Southern Pacific to Globe. 124 miles from Globe through some of the most magnificent mountain scenery in Arizona. At present, guests must make their own travel arrangements from Globe. Located in the White Mountains. Main hotel is cement structure, built on a Spanish-Moorish style. Art studio. Twenty bedrooms with individual baths, also ten log cabins, eight with private baths, ranging from one to three rooms. Cabins are furnished with cook stove, dining table, bed, chairs, and with hot and cold water facilities. Overlooks three large lakes, golf course and tennis courts. Swimming and boating on lakes, trout fishing, horseback riding and dancing. There are also weekly trips to points of interest, including Indian ruins, some of which have never been visited by an archaeologist; Salt Lake, extinct volcanoes, burning mountain, etc. Rates, \$60 a week for hotel guests, \$200 a month; this includes saddle horses with guides for parties. Cabins rent from \$40 to \$75 a month. Opens May 15 and closes December 15.

### *Triangle T Ranch*

Address Dragoon, Arizona. Take Southern Pacific to Dragoon or Tucson, where, by appointment, guests are met. Ranch is located in beautiful Texas Canyon, three miles northeast of Dragoon station, at elevation of 4,500 feet. This is heart of Southwest Arizona's great cattle range country where all activi-

ties of ranch life may be enjoyed. Main building of Spanish architecture. Modern, stucco cottages; each room opening into central patio. Excellent home cooked meals. Only short drive to Old Missions, Agua Prieta, Naco and Nogales, all across the border in Old Mexico. Rates from \$40 per week.

### *Sierra Linda Ranch*

Sierra Linda Ranch, Portal, Arizona, via Rodeo, New Mexico. Take Southern Pacific to Rodeo or Douglas. Located at mouth of Cave Creek with the beautifully wooded Chiricahua Mountains in background, and facing San Simon Valley. Accommodations are modern and comfortable. Delightful winter and summer climate, with riding, hiking, and other diversions. Douglas, Arizona, and Agua Prieta, Old Mexico, the latter noted for its clubs and cafes, reached by good highway. Rates \$50 per week. Special monthly rates. For further information address E. W. Gurnett, Rodeo, New Mexico.

### *Remuda Ranch*

Jack Burden, owner, Wickenburg. Take Southern Pacific to Phoenix where ranch car meets guests by appointment. 53 miles northwest of Phoenix on Hassayampa River, altitude 2,200 feet. Modern adobe ranch buildings, appetizing meals with fresh fruits and vegetables always served. Rates from \$35 week, \$140 per month.

### *Monte Vista Ranch*

L. C. White, manager, Wickenburg. Take Southern Pacific to Phoenix where ranch car meets guests by appointment. Located on Hassayampa River, elevation 2,200 feet. Commands a fine view of surrounding mountains. Modern guest houses, comfortably furnished; also detached cottages. Plenty of fresh cream, butter and eggs. Rates \$40 per week, \$150 per month and up. Season October 1 to June 1.

### *C-4 Guest Ranch*

Robert C. Storns, owner, Wickenburg. Take Southern Pacific to Phoenix where ranch car meets guests by appointment. 55 miles northwest of Phoenix via beautiful Hassayampa Trail. Ranch comprises 1,500 acres located in foothills of Bradshaw Mountains. Elevation 2,077 feet. In addition to horseback riding, hiking, hunting, etc., there is golf, tennis and croquet. Modern ranch buildings, excellent cuisine. Rates from \$50 per week. Season October 1 to June 1.

### *Kay-El-Bar Ranch*

Henry Warbasse, owner, Wickenburg. Take Southern Pacific to Phoenix where ranch car meets guests by appointment. 58 miles northwest of Phoenix in sheltered valley between high mesas. Altitude 2,076 feet. A real western ranch with modern

## A VARIETY OF SOUTHERN ARIZONA GUEST RANCHES TO CHOOSE FROM

accommodations. All rooms large and sunny, each room equipped with shower and running hot and cold water; heated by hot air furnace. Rates from \$55 per week. Season from October 1 to June 1.

### Circle Flying W Ranch

Leo Weaver, Wickenburg. Take Southern Pacific to Phoenix where ranch car meets guests by appointment. On the Hassayampa Trail north of Phoenix. A real western ranch engaged in the business of raising thoroughbred horses. Modern conveniences for accommodation of about 20 guests. Registered Jerseys furnish the milk, cream and butter served with the excellent home prepared meals. Rates \$60 per week, \$230 per month.

### Aztec Lodge and Guest Ranch

E. R. Fryer, manager Globe, Arizona. Take Southern Pacific to Globe where ranch car meets guests by appointment. Located 50 miles north of Globe, off the Apache Trail, among the pines of the Sierra Ancha Mountains. Elevation 5,500 feet. Fishing, hunting, golf, tennis, swimming, archery in addition to the usual hiking and saddle trips. Weekly horseback or hiking trips to Devil's Chasm, Cliff Dwellings, Bridal Falls, etc. Comfortably furnished log cabins; hot and cold showers and Indian steam baths. Rates \$30 per week; saddle horses \$10 per week extra. Season May 1 to December 1.

### The Wigwam

A. C. Heimberg, manager, Litchfield Park. Take Southern Pacific to Litchfield or Phoenix. Located 22 miles west of Phoenix, five miles north of Litchfield. Modern cottages accom-

modating two to six guests each. Swimming pool, tennis, golf, lawn games, in addition to horseback riding. Rates on application.

### Spur Cross Ranch

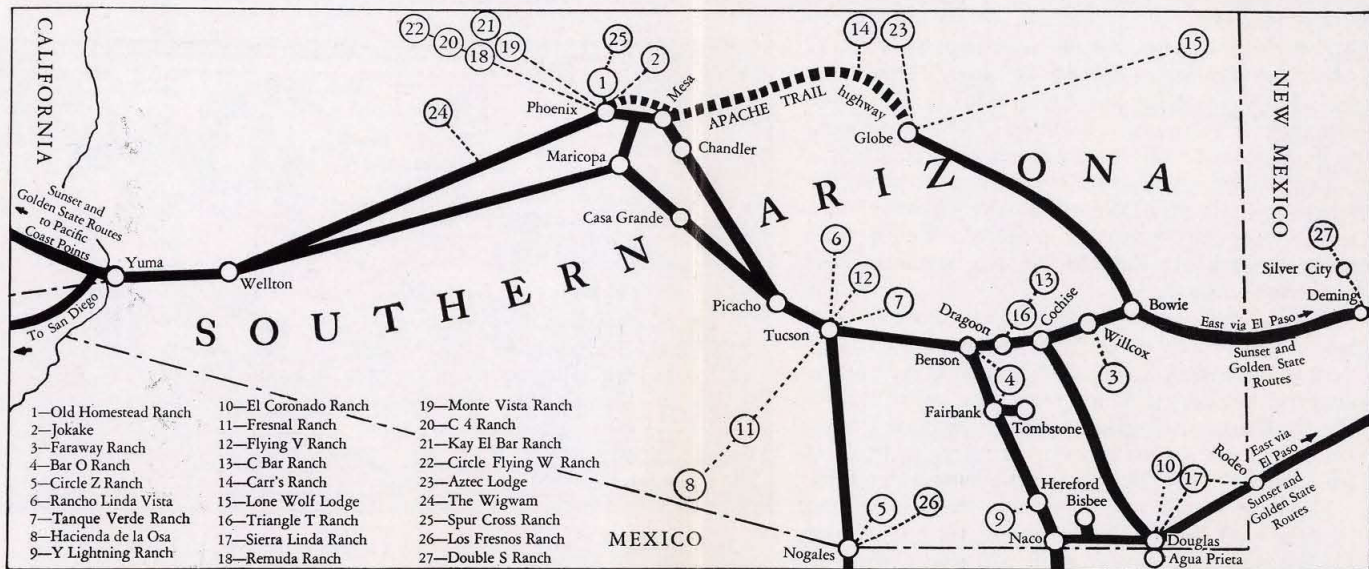
Address, Cave Creek, Arizona, 35 miles northeast of Phoenix. Rates \$60 per week and up, including use of horse. Season October 1 to May 1.

### Los Fresnos Ranch

Address, Nogales, Arizona. Take Southern Pacific to Nogales, where guests, by appointment, are met by ranch car and taken to ranch, 13 miles distant. Accommodations are those usually found on cattle ranches, with pleasant, homelike surroundings and good food. Rates \$25 per week.

### Double S Ranch

J. W. Sharp and B. H. Wilbur, managers, Cliff, New Mexico. Take Southern Pacific to Deming where guests will be met by ranch car, or take stage Deming to Silver City and be met there. Ranch located at base of Mogollon Mountains, altitude 5,300 feet. 100 miles from Deming, 50 miles from Silver City. Comfortable accommodations for 20 guests in large adobe house and cabins. Open all year. Mountain camp, open May to October, located 26 miles from main ranch, in big timber country, altitude 8,200 feet. Good trout fishing, also bear, deer, turkey, and other game in season. Rates at main ranch for stay of four weeks, \$45 per week up; \$5 per week additional for shorter stay. At mountain camp, \$60 per week or \$10 per day. All rates include use of saddle horse. Advance reservation with one-third deposit, also references required.



Heavy black lines indicate Southern Pacific lines in Southern Arizona. Circles show location of guest ranches described in this booklet

## Principal Hotels . . . Southern Arizona

### Agua Caliente

HOTEL AGUA CALIENTE, rooms \$3.50 per day and up, American plan.  
Located three miles from Southern Pacific station at Hyder, Arizona.

### Bisbee

COPPER QUEEN HOTEL, rooms \$1.50 and up per day.

### Bowie

SOUTHERN PACIFIC HOTEL, rooms \$1.50 per day, with bath, \$2.00—meals a la carte.

### Chandler

THE SAN MARCOS, with Bungalows. Resort hotel, season November 15 to May 1. Rates on application.

### Douglas

GADSDEN HOTEL, rooms \$2.50 per day and up, all with bath.

### Globe

DOMINION HOTEL, rooms \$1.50 and up per day. Meals a la carte.  
GLOBE HOTEL, rooms \$1.50 and up per day. European plan.

### Nogales

BOWMAN HOTEL, rooms \$1.50 and up per day. European plan.  
MONTEZUMA HOTEL, rooms \$2.00 and up per day. European plan.

### Yuma

ARIZONA HOTEL, rooms \$2.50 and up per day. European plan.  
DEL MING HOTEL, rooms \$2.50 and up per day. European plan.  
LEE HOTEL, rooms \$1.50 and up per day. European plan.  
SAN CARLOS, rooms \$2.50 and up per day. Meals a la carte.

### Mesa

EL PORTAL, rooms \$2.50 and up per day. Meals a la carte.

### Phoenix

HOTEL ADAMS, rooms \$2.50 and up per day. Meals a la carte.  
ARIZONA-BILTMORE, Resort Hotel, season opens November 1, American plan, \$12.00 and up per day.

ARIZONA HOTEL, rooms \$2.00 and up per day, meals a la carte.

INGLESIDE INN, Resort Hotel, season November 1 to May 15.  
Rates on application.

JEFFERSON HOTEL, rooms \$2.00 and up per day. European plan.

LUHRS HOTEL, rooms \$1.50 and up per day. European plan.

SAN CARLOS HOTEL, rooms \$3.00 and up per day. European plan.

WESTWARD HO, rooms \$4.00 and up per day, all with bath. European plan.

### Roosevelt Dam

APACHE LODGE (open about December 1 to March 31) rooms \$2.00 and up per day. American plan, \$5.00 and up per day.

### Tempe

CASA LOMA HOTEL, rooms \$1.50 and up per day. European plan.

### Tucson

CONGRESS HOTEL, rooms \$2.00 and up per day. European plan.

EL CONQUISTADOR HOTEL and bungalows, resort hotel. Season opens November 15. American Plan \$15.00 and up per day.

EL PRESIDIO HOTEL, rooms \$2.50 and up per day. European plan.

PIONEER HOTEL, rooms \$3.00 and up per day. European plan.

SANTA RITA, rooms \$2.50 and up per day. European plan.

## To the Guest Ranches of Southern Arizona

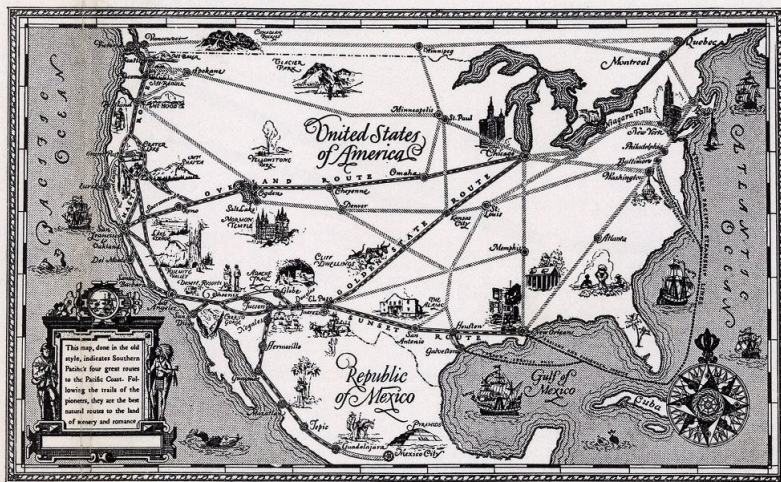
and See The Whole Pacific Coast enroute

YOU CAN make the most of your trip "Out West" if you extend it beyond Southern Arizona to include the whole Pacific Coast. This can be easily arranged by using alternate routes of Southern Pacific in going to and returning from Southern Arizona.

Only Southern Pacific offers four great scenic routes to California. The main stems of these and a few of the chief points of romantic, historic and scenic interest are indicated in the accompanying old-style outline map.

It is to the traveler's advantage to go one way, return another. By so doing he will not only have a variety of scenery going and returning across the country, but may also see the entire sweep of the Pacific Coast. Ask your nearest Southern Pacific agent (see next page) for copy of Southern Pacific's free booklet "How Best to See the Pacific Coast."

Southern Pacific representatives, who are located in nearly all large cities throughout America and Europe, and their capable staffs will gladly help you arrange the details of your trip to Southern Arizona.



This map with historic pictorial border, 23x32 inches, in full colors on parchment paper, for 25c stamps or coin, only a fraction of its actual cost. Address E. W. Clapp, Dept. 2, Southern Pacific Co., 65 Market Street, San Francisco.

# WHERE TO OBTAIN MORE INFORMATION ON SOUTHERN ARIZONA

SOUTHERN Arizona is so large that the variety of its attractions can be indicated in only a general way by the photographs and text of this booklet. However, there are in Southern Arizona a number of public organizations equipped to furnish detailed information to prospective tourists. Any Southern Pacific agent listed below will be pleased to assist inquirers in securing the proper contacts, or inquiries may be addressed directly to the following sources:

## Travel and Resort Inquiries

For information regarding wintertime vacations, health resorts and sanitariums, travel, or guest ranching in balmy and healthful Southern Arizona, the following sources are suggested: The Tucson Sunshine-Climate Club, Tucson, Arizona; The Phoenix-Arizona Club, Phoenix, Arizona; The Douglas-Borderland Club, or the Douglas Chamber of Commerce and Mines, Douglas, Arizona; The Chamber of Commerce, Bisbee, Arizona; The Chamber of Commerce, Phoenix, Arizona; The Chamber of Commerce,

Casa Grande, Arizona; The Chamber of Commerce, Tucson, Arizona; The Wonderland Club, Nogales, Arizona; The Chamber of Commerce, Yuma, Arizona; The Chamber of Commerce, Mesa, Arizona; The Chamber of Commerce, Chandler, Arizona; Mr. J. H. McClure, Southern Pacific, General Freight and Passenger Agent, Phoenix, Arizona.

For camping, hunting and fishing data, the U. S. Forest Service, Ellis Building, or State Game Warden, State Capitol, Phoenix, Arizona.

## Southern Pacific Representatives

YOUR nearest Southern Pacific representative will help you obtain information regarding recreational opportunities in districts served by Southern Pacific Lines. He will also give you full information as to passenger fares, Pullman reservations, time schedules, etc., and will attend to such details as tickets, hotel and Pullman reservations for you, or help you with freight shipment. If there is a Southern Pacific agent in your city, he will gladly call at your office or home and personally help you arrange your trip. Phone or write him.

ALBUQUERQUE, CAL., 216 Healey Bldg. . . . . J. H. Mahan, *District Freight and Passenger Agent*  
ATLANTA, GA., Second and Casson Sts. . . . . L. A. Vezay, *Division Freight and Passenger Agent*  
AUSTIN, TEX., 604 Brazos St. . . . . W. R. Smith, *Division Freight and Passenger Agent*  
BALTIMORE, MD., 209 Morris Bldg., N. W. Cor. Charles and Saratoga Sts. . . . . W. B. Johnson, *General Agent*  
BEAUMONT, TEX., Sunset Bldg. . . . . F. L. Sheeks, *Division Freight and Passenger Agent*  
BIRMINGHAM, ALA., 501 Protective Life Bldg. . . . . S. J. Brown, *General Agent*  
BOSTON, MASS., 204 Washington St., Room 209 . . . . . E. S. Leavitt, *General Agent*  
BROWNSVILLE, TEX., 1106 Levee St. . . . . M. L. Love, *General Agent*  
BUFFALO, N. Y., 204 Ellicott Square Bldg., 207 Main St. . . . . G. H. Vogel, *General Agent*  
CHICAGO, ILL., 33 West Jackson Blvd. . . . . J. H. Desherow, *General Agent, Passenger Department*  
CHICAGO, ILL., 35 West Jackson Blvd. . . . . A. C. Hedlund, *General Agent, Freight Department*  
CINCINNATI, OHIO, 205 Dixie Terminal Bldg., Fourth and Walnut Sts. . . . . Robt. McDowell, *General Agent*  
CLEVELAND, OHIO, 1116 Hippodrome Bldg., 720 Euclid Ave. . . . . E. G. Cook, *General Agent*  
CORPUS CHRISTI, TEX., 406 Peoples St. . . . . J. A. Jolly, *Acting General Agent*  
CORSCAANA, TEX., East Collins Ave. and North Tenth St. . . . . J. H. Evetts, *Division Freight and Passenger Agent*  
DALLAS, TEX., 1313 Commerce St. . . . . L. C. Bouchard, *General Freight and Passenger Agent*  
DENVER, COLO., 404 Boston Bldg., Seventeenth and Champa Sts. . . . . E. H. Williams, *General Agent*  
DETROIT, MICH., 205-7 Majestic Bldg., Woodward and Michigan Aves. . . . . L. H. Trimble, *General Agent*  
EL CENTRO, CAL., Southern Pacific Passenger Station . . . . . J. W. Donohue, *District Freight and Passenger Agent*  
EL PASO, TEX., 1st Nat. Bank Bldg., 101 North Oregon St. . . . . J. E. Monroe, *District Passenger Agent*  
EUGENE, ORE., 616 Willamette St. . . . . L. L. Graham, *District Freight and Passenger Agent*  
FORT WORTH, TEX., 116 East Ninth St. . . . . E. A. Pennington, *District Passenger Agent*  
FRESNO, CAL., corner H and Mariposa Sts. . . . . W. T. Plummer, *District Passenger Agent*  
GALVESTON, TEX., 2024 Market St. . . . . H. C. Franks, *Division Freight and Passenger Agent*  
GLENDALE, CAL., 106 North Brand Blvd. . . . . H. E. Pierson, *District Passenger Agent*  
HARLINGEN, TEX., Van Buren and Commerce Sts. . . . . W. J. Carter, *Assistant General Freight and Passenger Agent*  
HOUSTON, TEX., 943 Texas Ave. . . . . E. J. Peters, *Division Passenger Agent*  
INDIANAPOLIS, IND., 309 Merchants Bank Bldg., 11 South Meridian St. . . . . Lyon Liston, *General Agent*  
KANSAS CITY, MO., 101 Railway Exchange Bldg., 705 Walnut St. . . . . F. W. Sedgewick, *General Agent*  
KLAMATH FALLS, ORE., 515 Main St. . . . . C. M. Biggs, *District Freight and Passenger Agent*  
LAKE CHARLES, LA., Majestic Hotel. . . . . Jos. Spear, *Assistant General Freight and Passenger Agent*  
LONG BEACH, CAL., 140 West Ocean Ave. . . . . L. Overman, *District Passenger Agent*  
LOS ANGELES, CAL., Pacific Electric Bldg. . . . . C. A. Pastor, *District Passenger Agent*  
MEMPHIS, TENN., 204 Mefford Nat. Bank Bldg. . . . . A. S. Rosenbaum, *District Freight and Passenger Agent*  
MEMPHIS, TENN., 716 Exchange Bldg. . . . . C. A. Bevis, *General Agent*  
MINNEAPOLIS, MINN., 823 Metropolitan Life Bldg., 125 South Third St. . . . . R. K. Smith, *General Agent*  
MODESTO, CAL., Southern Pacific Passenger Station . . . . . L. T. Sparks, *District Freight and Passenger Agent*  
NEW ORLEANS, LA., 610 Poydras St. . . . . A. C. Ziegand, *Division Passenger Agent*  
NEW ORLEANS, LA., 205 Park Bldg., 355 Fifth Ave. . . . . Bailey M. Clark, *General Agent, Southern Pacific Steamship Lines*  
NEW YORK, N. Y., 535 Fifth Ave. (at 44th St.), Room 1012 . . . . . H. H. Gray, *General Eastern Passenger Agent*  
NEW YORK, N. Y., 531 Fifth Ave. (at 44th St.)—Southern Pacific Uptown Ticket Office. Geo. V. McArt, *City Passenger and Ticket Agent*  
NEW YORK, N. Y., 165 Broadway, Room 2015—Southern Pacific Downtown Ticket Office. L. E. Kuhrt, *Ticket Agent*  
NEW YORK, N. Y., 165 Broadway . . . . . S. C. Chiles, *General Eastern Freight Agent*  
OAKLAND, CAL., Thirteenth and Broadway . . . . . L. F. Hudson, *District Passenger Agent*  
ODGEN, UTAH, 545 David Eccles Bldg., 377 Twenty-fourth St. . . . . F. G. Ruthrauff, *District Freight and Passenger Agent*  
OKLAHOMA CITY, OKLA., 924 Perrine Bldg., 116 North Robinson St. . . . . J. A. Eads, *General Agent*  
PASADENA, CAL., 148 East Colorado St. . . . . G. W. Wetherby, *District Passenger Agent*  
PHILADELPHIA, PA., 706 Packard Bldg., 111 South Fifteenth St. . . . . F. T. Brooks, *General Agent*  
PHOENIX, ARIZ., 101 North Central Ave. . . . . S. J. Schwartz, *District Passenger Agent*  
PITTSBURGH, PA., 205 Park Bldg., 355 Fifth Ave. . . . . H. F. Starke, *General Agent*  
PORTLAND, ORE., 6th and Washington Sts. . . . . J. A. Hoppogod, *District Passenger Agent*  
RENO, NEV., Commercial Row and Lake St. . . . . Theodore Bergerson, *District Freight and Passenger Agent*  
RIVERSIDE, CAL., 750 Market St. . . . . J. R. Downs, *District Freight and Passenger Agent*  
SACRAMENTO, CAL., Southern Pacific Passenger Station . . . . . M. A. Peck, *District Passenger Agent*

SALEM, ORE., 184 North Liberty St. . . . . K. A. De Marais, *District Freight and Passenger Agent*  
SALT LAKE CITY, UTAH, 41 South Main St. . . . . D. R. Owen, *General Agent*  
SAN ANTONIO, TEX., 415 N. St. Mary St. . . . . E. McClannahan, *Assistant General Passenger Agent*  
SAN DIEGO, CAL., 677 Spreckels Bldg. . . . . A. D. Hagaman, *District Freight and Passenger Agent*  
SAN FRANCISCO, CAL., 742 Market St. . . . . T. Louis Chess, *District Passenger Agent*  
SAN JOSE, CAL., Second and San Fernando Sts. . . . . Geo. B. Hanson, *District Passenger Agent*  
SANTA ANA, CAL., 223 West Fourth St. . . . . L. B. Valla, *District Freight and Passenger Agent*  
SANTA BARBARA, CAL., 937 State St. . . . . G. C. Drake, *District Passenger Agent*  
SANTA MONICA, CAL., 416 Santa Monica Blvd. . . . . A. J. Rehwood, *District Passenger Agent*  
SANTA ROSA, CAL., 210 Rosenberg Bldg. . . . . R. B. Houston, *District Freight and Passenger Agent*  
SEATTLE, WASH., 1405 Fourth Ave. . . . . C. M. Andrews, *Assistant General Freight and Passenger Agent*  
SHREVEPORT, LA., 320 Market St. . . . . M. J. Dooley, *Division Freight and Passenger Agent*  
ST. LOUIS, MO., 204 Carleton Bldg., 308 North Sixth St. . . . . L. B. Banks, *General Agent*  
STOCKTON, CAL., Main and San Joaquin Sts. . . . . S. C. Beane, *District Freight and Passenger Agent*  
TUCSON, ARIZ., 72 North Stone Ave. . . . . E. D. Rockwell, *District Freight and Passenger Agent*  
WACO, TEX., 112 South Sixth St. . . . . Wade Cunningham, *Division Freight and Passenger Agent*  
WASHINGTON, D. C., Suite 301, Shoreham Bldg., 15th St. at H, N, W. . . . . A. J. Poston, *General Agent*  
WASHINGTON, D. C., 1510 H St., N. W. . . . . D. D. Coffman, *Passenger Agent—Washington-Sunset Route*

## Foreign Agents

These conveniently-located Southern Pacific foreign offices are equipped to render complete passenger and freight service. Patrons are cordially invited to make full use of these facilities.

GENOA (4), ITALY, Via Roma 8a . . . . . Brizolesi, Kemsley & Millbourn, *General Agents for Italy*  
MILAN (112), Italy, Via Moscova 18 . . . . . R. Menendez, *General Agent for Cuba*  
ROME, ITALY, Piazza Di Spagna, No. 59/60 . . . . . Victor Mylrea, *District Agent*  
TURIN, ITALY, Via La Grange, 23 . . . . . [N. R. P. Bonsor, *Assistant General Agent, London*  
HAMBURG, GERMANY, 18 Glockengieserwall . . . . . G. Ruhr, *General Agent for Germany, Austria, Hungary, Switzerland, Poland, Roumania, Denmark, Norway, Sweden and Netherlands*  
HAVANA, CUBA, Pi y Margall (Antes Obispo) 46 . . . . . [A. B. Reynoldson, *General Agent for Great Britain*  
LIVERPOOL, ENGLAND, 21 Water Street . . . . . [Victor Mylrea, *District Agent*  
LONDON, ENGLAND, 49 Leadenhall Street . . . . . [A. B. Reynoldson, *General Agent for Great Britain*  
MEXICO CITY, MEX., Pasaje America, Avenida Cinco de Mayo, No. 7 . . . . . [N. R. P. Bonsor, *Assistant General Agent, London*  
MONTERREY, MEX., Langstroth Bldg. . . . . F. V. Stark, *General Agent for Northern Mexico*  
PARIS, FRANCE, 3 Rue Trochet . . . . . Alfonso Marquez, *General Agent for France, Belgium, Portugal and Spain*  
VANCOUVER, B. C., 585 Granville St. . . . . H. Desmit, *General Agent for France, Belgium, Portugal and Spain*  
VANCOUVER, B. C., 585 Granville St. . . . . E. J. Hendry, *General Agent for Western Canada*

E. W. CLAPP, *General Passenger Traffic Manager*, San Francisco, Cal.  
F. C. LATHROP, *Passenger Traffic Manager*, San Francisco, Cal.  
C. L. McFALL, *Passenger Traffic Manager*, Los Angeles, Cal.  
J. A. O'BANDY, *Passenger Traffic Manager*, Portland, Ore.  
J. D. MASON, *General Passenger Agent*, El Paso, Texas.  
J. H. McCLURE, *General Freight & Passenger Agent*, Phoenix, Ariz.  
J. T. MONROE, *Passenger Traffic Manager*, Texas and Louisiana Lines, Houston, Texas.  
W. C. MCCORMICK, *General Passenger Agent*, New Orleans, La.  
O. P. BARTLEY, *Passenger Traffic Manager*, Chicago, Ill.  
WILLIAM SIMMONS, *Traffic Manager*, Southern Pacific Steamship Lines, New York, N. Y.  
J. C. GILPIN, *Gen. Pass. Agent*, Southern Pacific Steamship Lines, New York, N. Y.  
L. G. HOFF, *Traffic Manager*, Mexican Lines, Guadalajara, Mex.  
C. S. FAY, *Vice President and Traffic Manager*, Texas and Louisiana Lines, Houston, Texas.  
F. S. MCGINNIS, *Vice President*, System Passenger Traffic, San Francisco, Cal., and Houston, Texas.

# Southern Arizona

and its Guest Ranches

# Southern Arizona

and its Guest Ranches



Southern Pacific

Southern Pacific