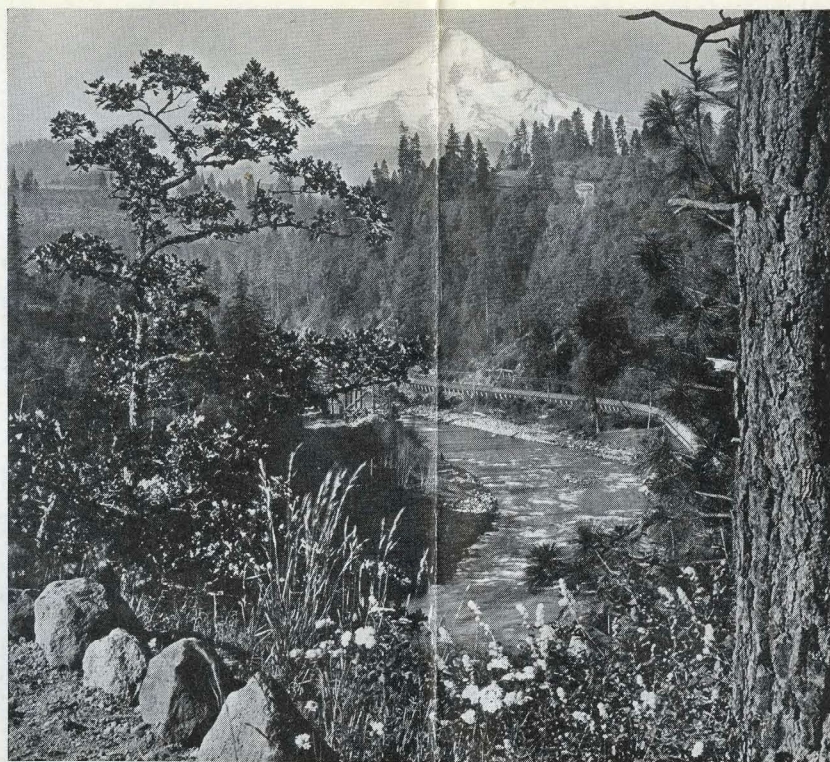


OREGON OUTDOORS



Mount Hood, Oregon

COPYRIGHT, GIFFORD

OREGON



REGON is pictured as a land of forest covered mountain ranges, rising tier upon tier, here and there topped by glistening snow peaks.

Blessed with a mild climate, sunlit days and long twilights, Oregon presents to the tourist and the vacationist, a series of beaches facing the blue Pacific, lush valleys, fern woodlands, meadows and uplands ablaze with wild flowers, silvery lakes, laughing waterfalls and rushing trout streams.

Among its many distinctive attractions is a highway whose scenic charm and engineering accomplishments are world famous, a snow-capped peak (11,225 feet)

completely encircled by an automobile road, a lake located in the crater of an extinct volcano whose surface is 7,000 feet above sea level. Any one of these would amply repay a visit to the Beaver State.

For the comfort and convenience of the visitor, the tourist and the adventurer, Oregon provides comfortable hotels in the larger places and in the remote fastnesses of its forests, mountains and ocean shore retreats are more modest but delightful stopping places.

Portland, Oregon

The metropolis of Oregon is Portland, universally known as "The City of Roses." It is advantageously lo-

The Summerland Beautiful



OREGON OUTDOORS



Portland, "The City of Roses," Oregon

cated for the tourist who would tarry awhile to visit at his leisure the many attractions of the Pacific Northwest.

It is a city composed of splendid hotels, substantial business blocks, fine public buildings, churches, attractive residential districts whose gardens are a profusion of flowers, delightful natural parks and boulevards, and a hub from which highways radiate in all directions.

The Rose Festival, held in Portland during the month of June, each year attracts more and more tourists. One contemplating a trip to the Pacific should make an effort to witness this unique homage to the most beautiful of flowers.

Columbia River Highway

Portland is the starting point of the world-famed

Columbia River Highway, the construction of which is recognized as one of the world's big engineering feats.

Unexcelled panoramas of forest, hill and mountain and the beautiful views of one of the mightiest of rivers prompted men of vision to undertake this colossal task.

Leaving Portland this entrancing automobile ride leads through attractive residential districts and Columbia Highway and River meet at Crown Point. Here to the memory of the pioneers has been erected a monument known as the Vista House, from whose observation gallery, (over seven hundred feet elevation) unexcelled views both to the east and the west may be obtained.

Descent is made gradually by a series of loops and there is added the grandeur and beauty of many waterfalls, principal of which is Multnomah Falls (700 ft).

The Summerland Beautiful , ,



OREGON OUTDOORS



Columbia River Highway, Oregon

Mount Hood Loop

Another of Portland's scenic and unique drives is the recently completed Mount Hood Loop, so named because it completely encircles, for many miles at an average elevation of 3500 feet, that wonderful mountain of which Oregon is so proud.

Mount Hood is one of the Northwest's most popular playgrounds. It is comparatively easy of ascent. Conveniently located and strictly modern hostelries add to its enjoyment.

Oregon's Beaches

Oregon's coast line, extending for three hundred miles from the mouth of the Columbia to the California line, is a succession of rugged cliffs and stretches of sandy

beach which delight the vacationist who glories in the bracing air and pleasures of the seashore.

Tributary to Portland are the Tillamook beaches. Conveniently reached by the Southern Pacific, the trip is interesting—passing first through the valley to the Coast Range, which is crossed at an elevation closely approaching 2,000 feet. Descending the western slopes the train winds and twists along the hillsides, crossing and re-crossing picturesque mountain streams through virgin forests of giant trees.

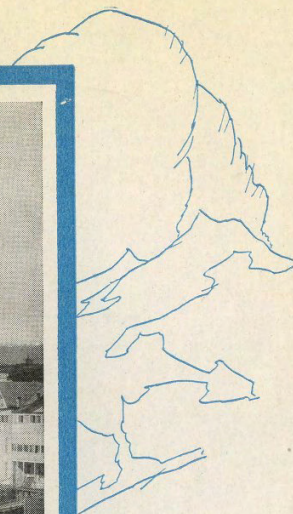
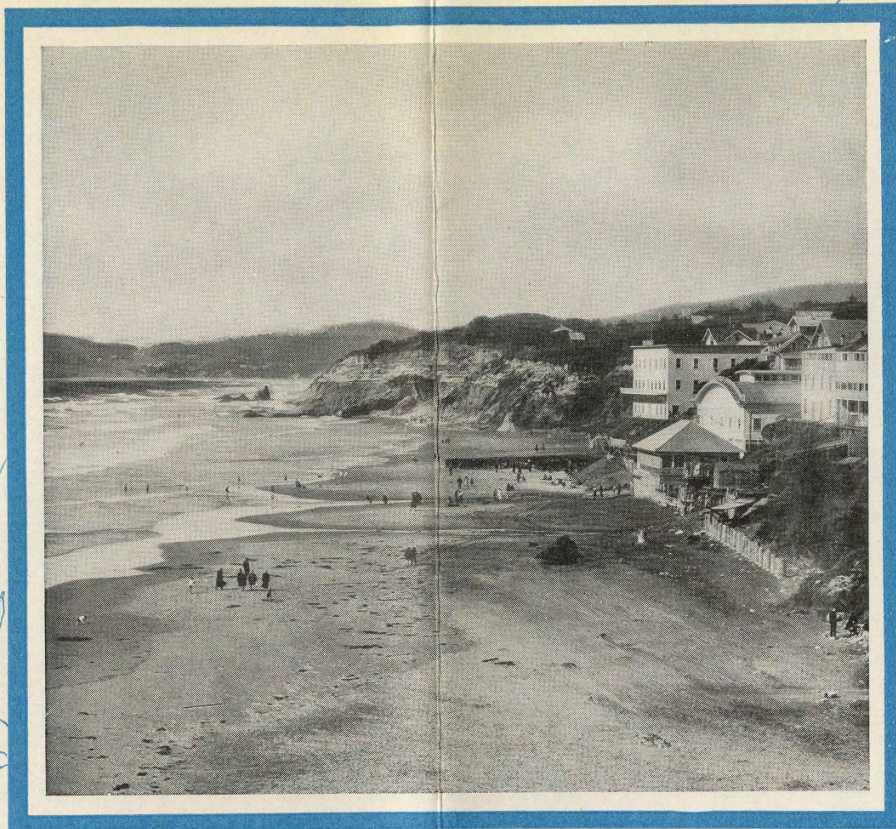
Farther to the south and reached by a branch of the Southern Pacific which leaves the main line at Albany, is Newport.

Beautifully situated, Newport is one of Oregon's attractive seaside resorts. Here one may boat on the

The Summerland Beautiful ♡ ♡



OREGON OUTDOORS



Newport Beach, Oregon

calm Yaquina Bay or join in more exciting deep-sea fishing excursions. There are agates to be hunted on the beach and you can bathe in surf or natatorium, go clamming and digging rock oysters, or hike to nearby points of interest, such as the lighthouse, marine gardens and the Devil's Punch Bowl. Newport is famous for its luscious huckleberries.

The Coos Bay and Bandon beaches offer the happy combination of beach, mountain and forest and attract those who would cast for the wary trout, roam the woods in search of game (which is particularly plentiful in this district) and indulge in beach amusements. The Coos Bay line branches at Eugene from the Southern Pacific Shasta Route and makes its way along the Siuslaw River and many picturesque lakes to the Coos Bay region.

Mountain Resorts

Oregon has many beautiful mountain resorts. From the northern to the southern boundary extends the Cascade Range, studded with snow-capped peaks and innumerable lakes.

Miles upon miles of Forest Service trails penetrate into the more remote parts, leading along alluring streams, lakes and mountain ridges.

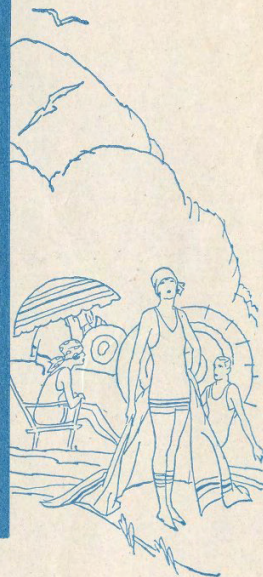
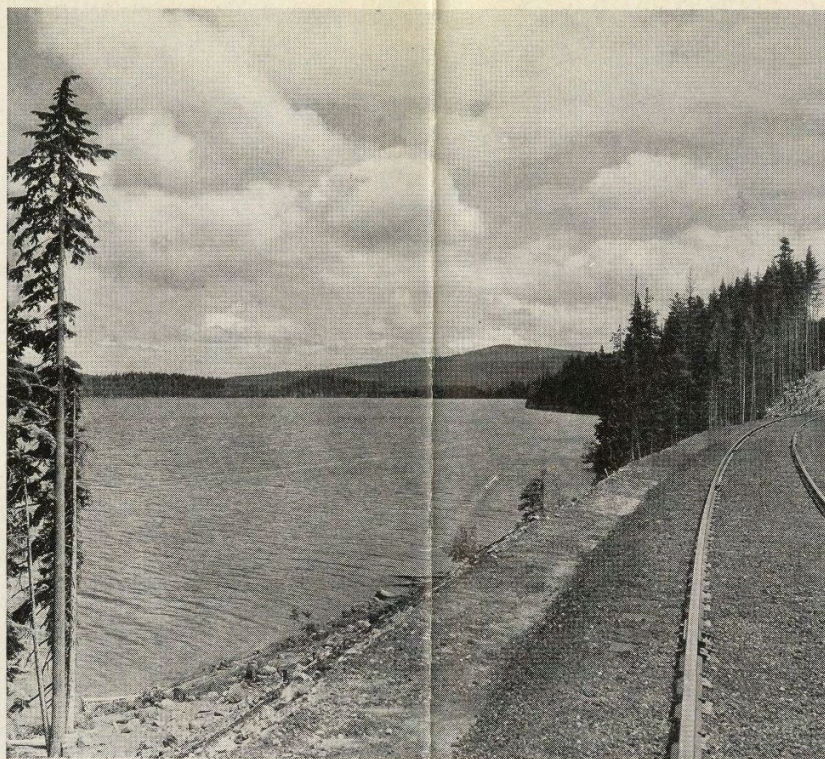
The average elevation of the Cascades is 5,400 feet while its snow-capped peaks exceed 10,000 and include Mt. Jefferson, Mt. Washington and the Three Sisters.

The approach to Mt. Jefferson from the Shasta Route is through Albany and Detroit. Eugene is the gateway to Mt. Washington and the Three Sisters.

The Summerland Beautiful



OREGON OUTDOORS



Odell Lake, Oregon

Beautiful Lakes

The lakes of the Cascades are many and beautiful. The larger are Crescent, Odell, Diamond, Crater, Davis, Waldo and Summit.

This enchanted lake country is reached by the Southern Pacific's new line—the Cascade Line. Leaving Eugene it follows the Willamette River and makes its way through the heavily-timbered Salt Creek Canyon (2,000 feet deep) to the summit. Here the track skirts for six miles the shores of Lake Odell, whose broad expanse, pine-covered shores and the irregular skyline of snow-clad peaks unite to make an alluring picture.

It is futile to endeavor to picture the grandeur of this region. Sufficient it is to say that he who glories in nature's beauties will be enraptured when beholding

the marvels of the Cascades. Comfortable accommodations are available at Odell Lake for those who would stop over in this beautiful lake district.

Crater Lake

It is also difficult to describe Crater Lake—language is not colorful enough and pictures are inadequate. There is but one way to know Crater Lake. Visit it!

Approaching the lake one feels a mysterious awe which is intensified when the rim is reached and its grandeur suddenly revealed.

No summer sky is half so blue as its mirror-like surface and no lake so full of silence and mystery.

The crater is approximately 4,000 feet deep: the lake 2,000 feet deep, six miles long, and five miles wide.

The Summerland Beautiful



OREGON OUTDOORS



Salt Creek Falls, Oregon

From the broken and irregular edges of the crater one looks down at the blue water more than a thousand feet below. Shimmering and ever-changing lights and shadows give the illusion of some wonderful and titanic opal.

Wonderful the spectacle from the rim! Marvelous in its fantastic changes is the more intimate view obtained by following the winding trail to the water's edge.

One may then take launch and ride along the edge of the lake on the ice cold, purple-blue water which has taken the place of the molten lava that once boiled and sputtered and smoked in that vast caldron. In this way you get "close-ups" of the remarkable formation and coloring of its almost perpendicular walls which vary from 700 to 2,000 feet in sheer height. Then there's the Phantom Ship, an island of weathered gray rock, so

named for its resemblance to a ship under sail and its apparent disappearance in certain lights.

Circling the lake your launch passes Wizard Island, itself a miniature volcano rising to a height of 783 feet and having a crater 80 feet in depth.

Many striking views of the lake, as well as its surroundings, are obtained from the rim road, a thirty-four mile drive completely encircling the crater.

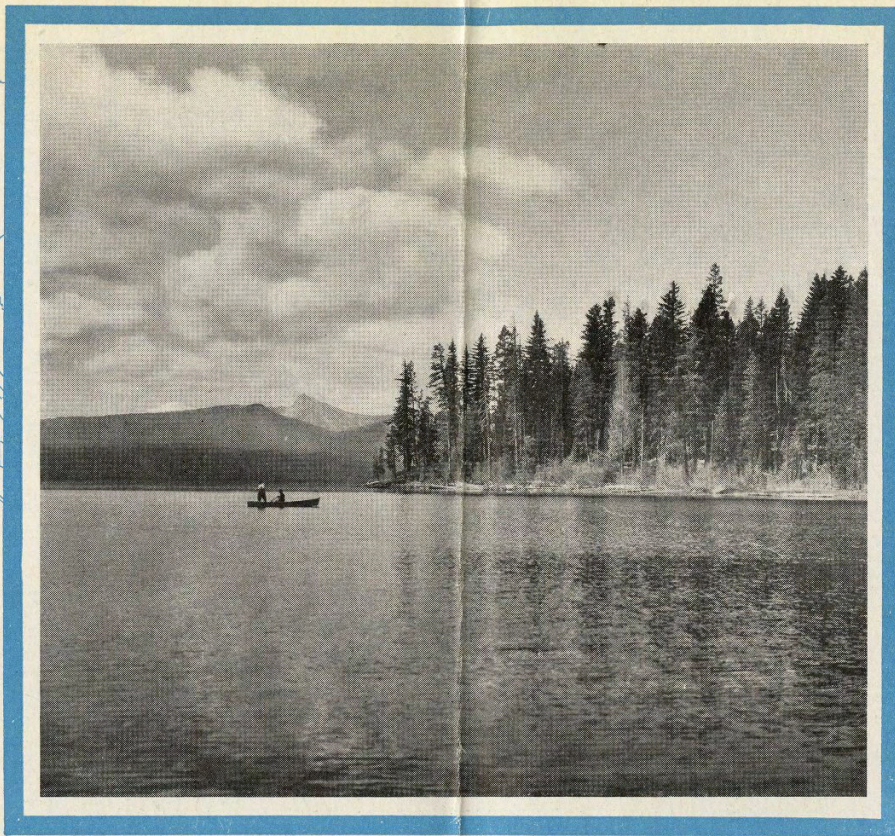
Another enjoyable trip is to Diamond Lake, one of the many jewels of this region, only 18 miles north from Crater Lake. There are also numerous trails through the woods with their myriads of colorful wild flowers—natives of the higher elevations.

Many days may profitably be spent at Crater Lake. Crater Lake Lodge is a picturesque inn located on the

The Summerland Beautiful



OREGON OUTDOORS



Crescent Lake, Oregon

rim of the lake and offers modern hotel conveniences. Tent houses are also available. The season is usually from July 1 to September 20. Requests for reservations should be made to the Crater Lake National Park Co., Medford, Oregon, or Crater Lake, Oregon, during the season.

Automobile stage service is maintained by the Crater Lake National Park Co., from Medford on the Siskiyou Line and Klamath Falls on the Cascade Line. The drive from Medford follows for many miles the picturesque Rogue River and leads through one of the most noted parks of Sugar Pine timber in the world.

Between the lake and Klamath Falls the drive is particularly pleasing, skirting Klamath Lake and winding its way through pleasant mountain passes and valleys.

Oregon Caves

The Oregon Caves, or "Marble Halls of Oregon," are a series of diversified chambers connected by natural passages located near the top of Lake Mountain, 4,000 feet above sea level.

In the irregular but well defined underground chambers are stalactites and stalagmites that have been scores of centuries in forming. Every step of the way leads to something new, and the two-and-a-half hour tour is crowded with underground wonders. Experienced guides, under supervision of the United States Forest Service, are provided at the caves' entrance so that visitors may explore this labyrinth of varied geological formations.

A commodious headquarters building, with dining

The Summerland Beautiful





The Summerland Beautiful



THE Summerland Beautiful holds the answer to your annual question: "Where shall I spend my vacation?"

Here is scenery of rare beauty and unmatched splendor — majestic snow-capped peaks, forest-covered mountains, picturesque valleys of green, rivers and brooks and alluring lakes, forests of giant trees and charming ocean beaches.

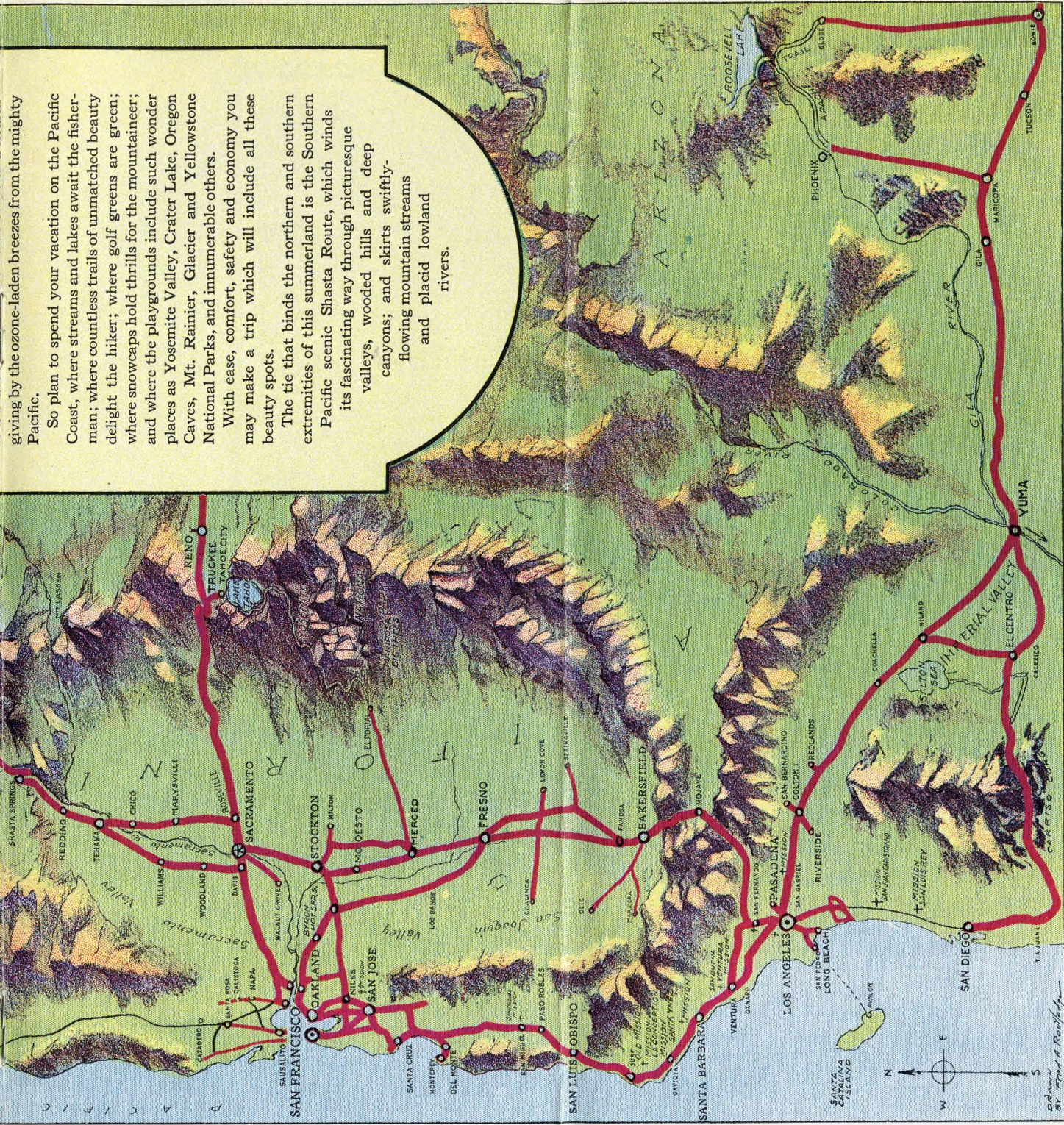
Combined with the natural beauties of this land is a bracing atmosphere made tonic and health-

giving by the ozone-laden breezes from the mighty Pacific.

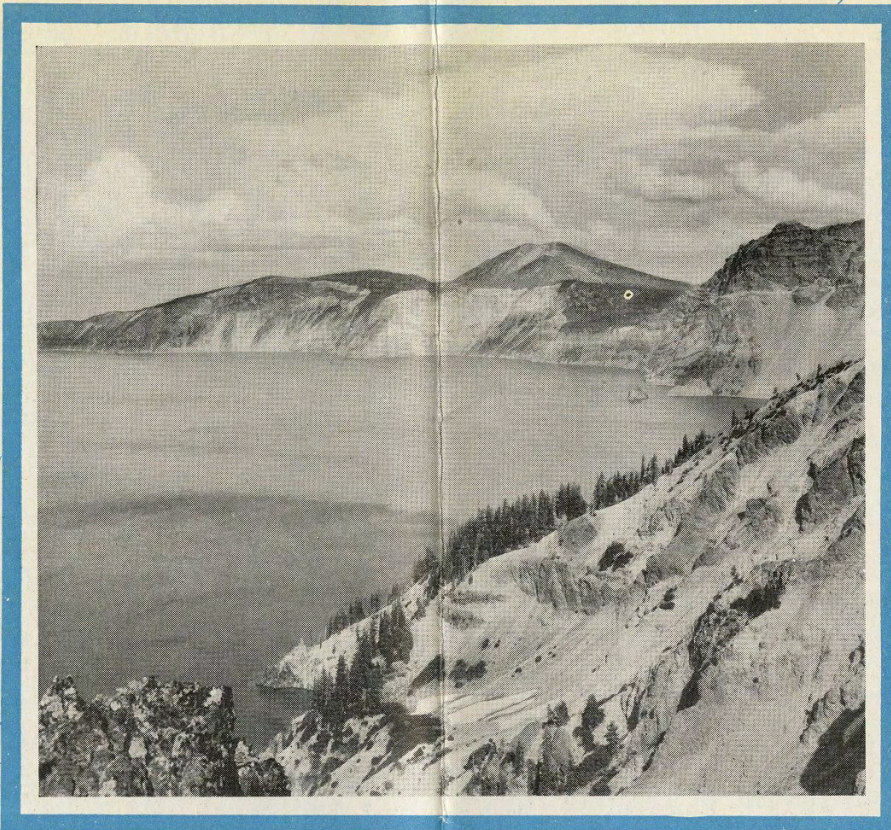
So plan to spend your vacation on the Pacific Coast, where streams and lakes await the fisherman; where countless trails of unmatched beauty delight the hiker; where golf greens are green; and where snowcaps hold thrills for the mountaineer; and where the playgrounds include such wonder places as Yosemite Valley, Crater Lake, Oregon Caves, Mt. Rainier, Glacier and Yellowstone National Parks, and innumerable others.

With ease, comfort, safety and economy you may make a trip which will include all these beauty spots.

The tie that binds the northern and southern extremities of this summerland is the Southern Pacific scenic Shasta Route, which winds its fascinating way through picturesque valleys, wooded hills and deep canyons; and skirts swiftly-flowing mountain streams and placid lowland rivers.



© Southern Pacific Railway



Crater Lake, Oregon

room and comfortable tent houses, is near the cave entrance.

Shasta Route tourists planning to visit the caves should arrange with conductor for a stopover at Grants Pass, on the Siskiyou line, where auto stages meet morning trains. The drive of 49 miles to the caves is over a good highway filled with typical Oregon scenery.

A Fisherman's Paradise

To the angler the rivers and lakes of Oregon call with insistence and to good purpose. In her streams, lakes and sloughs there is found an abundance of the best food fishes, chiefly the varieties of western salmon, steelhead, trout, ringed perch, catfish, black bass and croppies.

It is in the late summer when men who have fished in

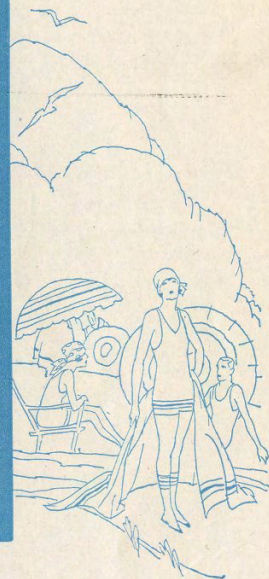
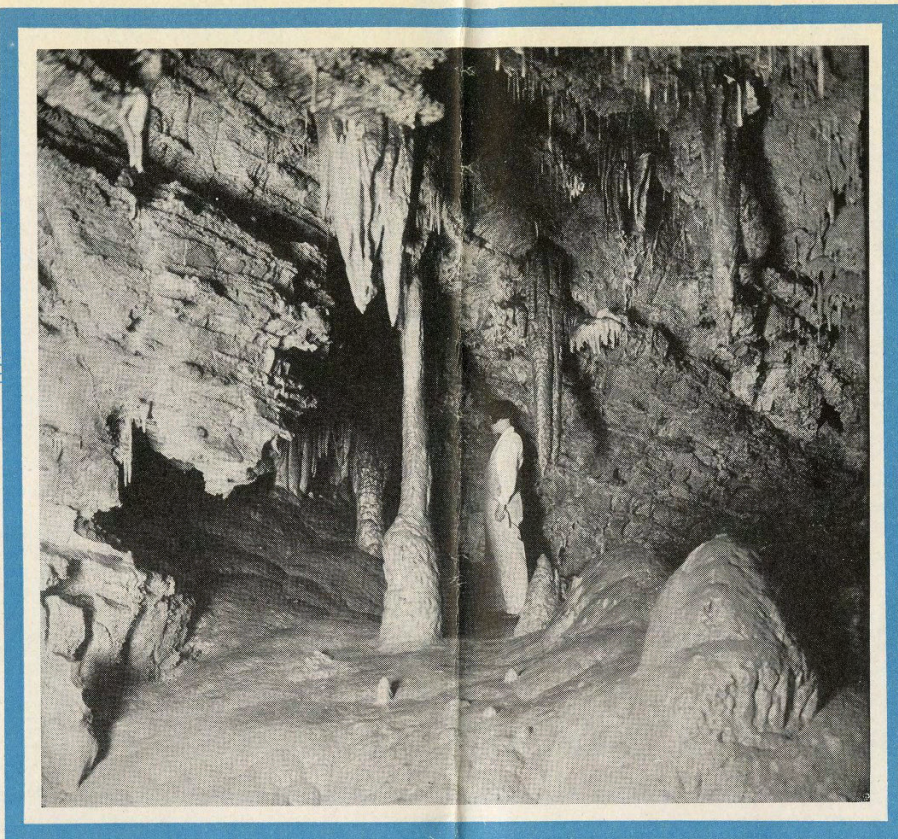
various waters of the earth journey to the Rogue River of Southern Oregon for the pleasure of casting their flies and matching their wits and skill with the fighting steelhead.

There are many other well-known fishing streams in Oregon. The fame of the McKenzie River redbreast is known wherever are gathered together the disciples of Izaak Walton. During the spring and summer months anglers by the hundreds hie for Eugene, thence to the upper reaches of the McKenzie. The McKenzie is a beautiful mountain stream winding its way through fir-clad hills whose lowlands are adorned with cedar, maple and alder. It is a part of the Summerland Beautiful, exceedingly popular with those who seek rest and relaxation amid nature's beauties.

The Summerland Beautiful



OREGON OUTDOORS



"The Marble Halls," Oregon

Many of the Cascade lakes originally contained no fish life, but during the last few years they have been rapidly stocked, until at the present time all of the more important contain a wealth of different species of trout.

Diamond Lake, situated near the summit of the Cascades, a few miles from Crater Lake, is in reality the gem its name would imply. It is not only a delight to the eye, but it is doubtful if anywhere else in the world there is an equal body of water from the standpoint of the angler. Beautiful camping grounds border its shores and comfortable lodge and hotel accommodations are available. It is reported that 22,000 people fished in this lake during the season of 1925. Nearly all of these were successful, for it is one lake with few disappointments. Notwithstanding the thousands of fish that are taken

from this fine body of water, here the Oregon State Game Commission maintains the largest trout egg-taking station in the world.

Fine Hunting

Oregon is also attractive to the man who cares for hunting. This State is not perhaps so populous with game as when the early settlers first arrived in their prairie schooners, but enough remains to furnish abundant sport. Among its game and fur-bearing animals are bear, deer, elk, beaver, coon, otter, mink, fisher, martin and muskrat. To these can be added the predatory mountain lion, Canada lynx, coyote and bobcat.

In her fields and along the shores of her lakes and sloughs are found many splendid and beautiful game

The Summerland Beautiful



OREGON OUTDOORS



Mountain Stream, Oregon

birds, ducks, geese, shore birds, Chinese pheasants, Hungarian partridges, grouse and quail.

The black bear in its various color phases is to be found in most of the wooded sections of the State and the sport of mountain lion hunting is increasing in popularity.

Two species of deer are found in Oregon. East of the summit of the Cascades is found the mule deer. West of that summit to the Pacific Ocean the Columbian Black tail abounds.

The Chinese pheasant is at present the leading game bird in Oregon for upland shooting. This is the first State in which it was introduced, and is probably more widely distributed and more abundant here than in any other State. Other native birds the sportsman finds are

grouse and quail. Waterfowl of all varieties are found in large numbers, and in proper season duck and goose shooting is of the best.

Golfing

Golfing enthusiasts should not fail to bring along their favorite clubs, for here in Oregon golf is played the year around.

During the summer months it is especially enjoyable—never a day too hot to thoroughly enjoy the game.

From seashore to the foothills of snow peaks are sporty and beautifully situated courses where the enthusiast will find ample opportunities and real tests of his skill. The ever-growing popularity of this game in Oregon produces new and finer courses each year.

The Summerland Beautiful



OREGON OUTDOORS



Golfing, Oregon.

Your Trip

The trip to the Pacific Coast from any Eastern State is fascinating. You will cross great mountain ranges and pass through sections made famous by the colorful exploits of hardy pioneers.

All along the line you will find new scenes of interest—great mountain peaks, deserts and deep canyons. You will meet and talk with other travelers from every corner of the world—diversity refreshing both to mind and body.

And you will, of course, enter or leave the Summerland Beautiful through California.

No other railroad offers such a choice of routes to and from the West as does the Southern Pacific.

Four Great Routes

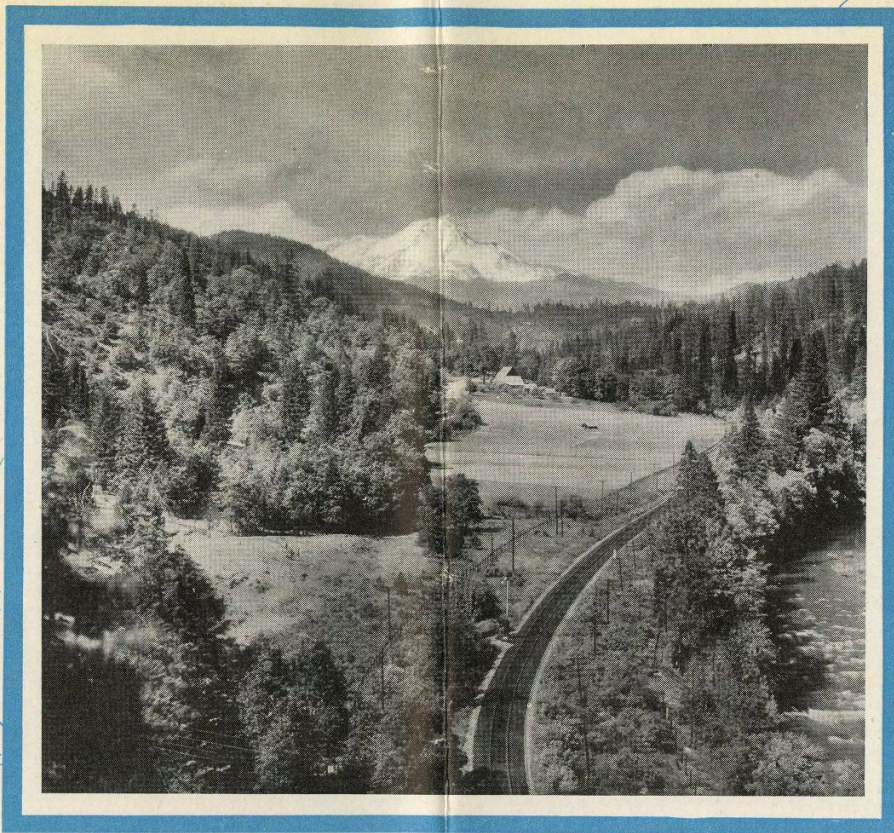
Sunset Route — The most southern route is the "Sunset Route," passing through Louisiana, Texas, New Mexico and Arizona, a land rich in romance and beauty. You may stop at El Paso and visit fascinating Jaurez, just across the border in Old Mexico. You can include in your itinerary at but \$10.00 additional, a trip over the Apache Trail of Arizona, a great scenic highway between Globe and Phoenix, via the Roosevelt Dam.

The Golden State Route — From Chicago to Los Angeles and Santa Barbara via El Paso. Is the route of the popular "Golden State Limited," extra fare, 63-hour flyer; the "Californian," from Kansas City, and the "Apache" which also provides through service to

The Summerland Beautiful



OREGON OUTDOORS



Scenic Shasta Route—Mount Shasta

COPYRIGHTED BY GABRIEL MOULIN, 1925

and from Minneapolis and St. Paul, also Memphis.

Overland Route-Lake Tahoe Line — The central gateway is the "Overland Route-Lake Tahoe Line," by way of Ogden and the great Salt Lake cut-off, through Utah and Nevada, crossing the Sierras and following for miles the American River Canyon. Onward through orcharded foothills, passing within view of the famous goldfields of '49, through Sacramento to Oakland and San Francisco.

The Shasta Route — Bridging the northern, central and southern gateways (Portland, San Francisco and Los Angeles) is the scenic "Shasta Route," threading a section of ever changing interest. Now, in a rugged canyon following the course of its dashing stream, now

emerging into a beautiful and productive valley, and later skirting the base of majestic mountains.

Between Eugene, Oregon, and Black Butte, California, there are two lines. The Siskiyou line crosses the mountains of its name and traverses the Rogue and Umpqua river valleys. The newly completed Cascade Line passes through Klamath Falls and Salt Creek Canyon. Crater Lake may be reached from either line. Go in over one line and leave by the other

Low round-trip summer excursions make travel surprisingly inexpensive. Drop a line to your closest Southern Pacific representative (see opposite page), who will gladly assist you with your plans and furnish additional information.

The Summerland Beautiful ♡ ♡



OREGON OUTDOORS

Representatives

Atlanta, Ga.—319 Healey Bldg. D. Asbury, General Agent
 Baltimore, Md.—206 Union Trust Bldg. W. B. Johnson, General Agent
 Beaumont, Tex.—Sunset Park F. L. Sheeks, D. F. & P. A.
 Birmingham, Ala.—406 Woodward Bldg. S. J. Brown, General Agent
 Boston, Mass.—294 Washington St. E. S. Leavitt, General Agent
 Buffalo, N. Y.—223 Ellicott Square Bldg. G. H. Vogel, General Agent
 Chicago, Ill.—33 West Jackson Blvd. A. C. Hedlund, General Agent
 Cincinnati, Ohio—206 Dixie Term. Bldg. Robert McDowell, General Agent
 Cleveland, Ohio—1116 Hippodrome Bldg. E. G. Cook, General Agent
 Denver, Colo.—303 Boston Bldg. E. H. Williams, General Agent
 Detroit, Mich.—203 Majestic Bldg. W. W. Hale, General Agent
 El Centro, Cal.—Market St., bet. 3rd and 4th V. F. Fitzzell, D. F. & P. A.
 El Paso, Tex.—114 Mills St. Richard Warren, D. F. & P. A.
 Eugene, Ore.—616 Willamette St. L. L. Graham, D. F. & P. A.
 Havana, Cuba—307 Manzana de Gomez R. Menendez, General Agent
 Houston, Tex. W. C. McCormick, G. P. A.
 Indianapolis, Ind.—Merchants Bank Bldg. Lyon Liston, General Agent
 Kansas City, Mo.—Railway Exchange Bldg. F. W. Sedgwick, General Agent
 Klamath Falls, Ore.—110 Eighth St. J. J. Miller, D. F. & P. A.
 Long Beach, Cal.—156 West Ocean Ave. L. Overman, D. P. A.
 Los Angeles, Cal.—Pacific Electric Bldg. H. P. Monahan, D. P. A.
 Medford, Ore.—National Bank Bldg. A. S. Rosenbaum, D. F. & P. A.
 Memphis, Tenn.—Exchange Bldg. L. C. Bouchard, General Agent
 Merced, Cal.—17th and N Sts. I. T. Sparks, D. F. & P. A.
 Mexico City, Mex.—Ave. Cinco de Mayo 32 F. V. Stark, General Agent
 Minneapolis, Minn.—1020 Metropolitan Life Bld. J. H. Desherow, Gen. Agt.
 New Orleans, La.—610 Poydras St. J. T. Monroe, G. P. A.
 New York, N. Y.—44th St. and 5th Ave. H. H. Gray, G. A. P. D.
 New York, N. Y.—165 Broadway S. C. Chiles, G. A. F. D.
 Oakland, Cal.—13th and Broadway Lee F. Hudson, D. P. A.
 Ogden, Utah—525 David Eccles Bldg. F. G. Ruthrauff, D. F. & P. A.
 Oklahoma City, Okla.—909 Colcord Bldg. J. A. Eads, General Agent
 Pasadena, Cal.—148 E. Colorado St. C. W. Wetherby, D. P. A.
 Philadelphia, Pa.—706 Packard Bldg. F. T. Brooks, General Agent
 Phoenix, Ariz.—107 N. Central Ave. R. P. Kyle, D. F. & P. A.
 Pittsburgh, Pa.—1312 Park Bldg. H. F. Starke, General Agent
 Portland, Ore.—141 Fourth St. J. A. Hopgood, C. T. A.
 Reno, Nev.—2nd and Center Sts. J. H. McClure, D. F. & P. A.
 Riverside, Cal.—750 Market St. J. R. Downs, D. F. & P. A.
 Sacramento, Cal.—I St., bet. 3rd and 5th D. R. Owen, D. P. A.
 Salem, Ore.—184 North Liberty St. A. A. Mickel, D. F. & P. A.
 Salt Lake City, Utah—41 South Main St. Press Bancroft, General Agent
 San Diego, Cal.—677 Spreckles Bldg. A. D. Hagaman, D. F. & P. A.
 San Jose, Cal.—First and San Fernando Sts. Geo. B. Hanson, D. P. A.
 San Francisco, Cal.—65 Geary St. C. J. Sundberg, D. P. A.
 Santa Ana, Cal.—223 W. Fourth St. L. V. Valla, D. F. & P. A.
 Santa Barbara, Cal.—937 State St. G. C. Drake, D. P. A.
 Santa Rosa, Cal.—210 Rosenberg Bldg. R. B. Houston, D. F. & P. A.
 Seattle, Wash.—314 Union St. B. C. Taylor, General Agent
 St. Louis, Mo.—312 N. Sixth St. L. B. Banks, General Agent
 Stockton, Cal.—Main and San Joaquin Sts. S. C. Beane, D. F. & P. A.
 Tucson, Ariz.—Score Bldg. E. J. Fenchurch, G. F. & P. A.
 Vancouver, B. C.—585 Granville St. E. J. Hendry, Canadian G. A.
 Washington, D. C. A. J. Posten, General Agent

Published by Passenger Traffic Department,
 Southern Pacific Lines, Portland, Oregon.

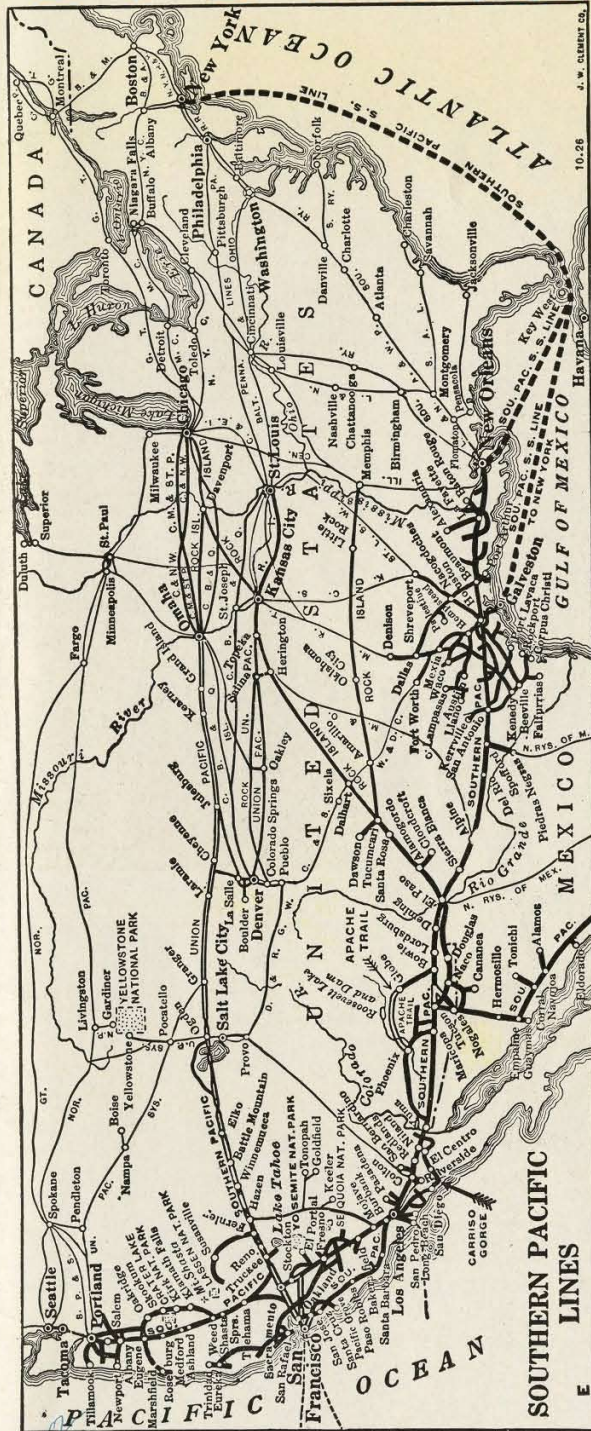
J. A. ORMANDY, General Passenger Agent, Portland, Oregon.

F. S. MCGINNIS,
 Passenger Traffic Manager.

JOHN M. SCOTT,
 Asst. Passenger Traffic Manager,
 Portland, Oregon.

A 15 3-27 25M

Made in U. S. A.



The Summerland Beautiful



JAMES. KERNS & ABBOTT CO. PORTLAND

OREGON OUTDOORS

OREGON OUTDOORS



SOUTHERN PACIFIC LINES

SOUTHERN PACIFIC LINES