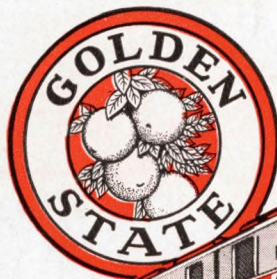


Better Than Ever!



The New
GOLDEN STATE LIMITED
to Arizona-California

**Hours
Faster**

Ready June 2

**2
Dining
Cars**

**Streamlined
Diesel-powered**

**Complete
PULLMAN
Accommodations
-COACHES, too**

**NO
EXTRA
FARE**

NOW! An even finer, more luxurious GOLDEN STATE LIMITED provides the fastest schedule without extra fare between Chicago and Los Angeles. 49½ hours Westbound. 48½ hours Eastbound . . . streamlined . . . and new cars are being placed in service as fast as the builder turns them out . . . to make this one of America's finest trains between Chicago and the West Coast. Stewardess-Nurses will be assigned to "Golden State" service at an early date.

**COAST-TO-COAST PULLMAN
SERVICE**

Effective June 1 from New York and June 2 from Los Angeles, all-room sleeping cars will be operated through on the Golden State Limited via New York Central and Pennsylvania on alternate days east of Chicago.



The *Comfort Route* to **CALIFORNIA**

No, we're not changing the name of our famous low-altitude route between Chicago and California . . . it's still officially the Rock Island-Southern Pacific *Golden State Route*. But we think when travelers try our faster, more luxurious, streamlined "GOLDEN STATE"—they'll agree it's the *comfort route* to California!

Look at the equipment . . . streamlined Sleeping Cars providing a wide choice of accommodations: Drawing Rooms, Compartments, Bedrooms, Roomettes and Sectional Space. Lightweight coaches, too—with seats numbered and all space individually assigned in advance. Better-than-ever

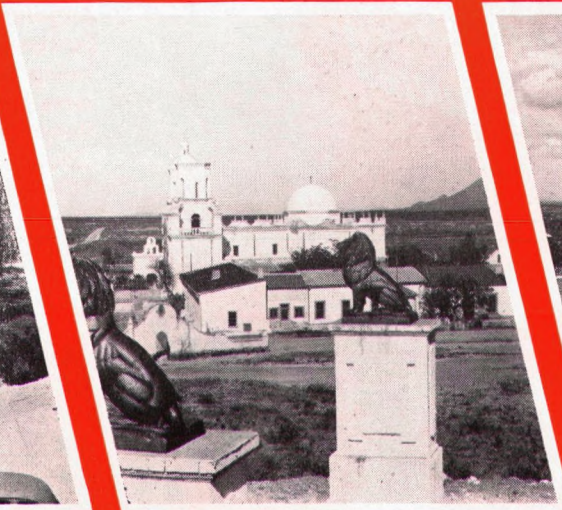
meal service, with TWO diners . . . one affording Coffee Shop services and prices—the other a regular Diner serving full meals. Barber and valet service is restored. And for sleeping car patrons, the modern, comfortable Lounge provides magazines, writing facilities, beverage service. Completely air-conditioned for year-round comfort . . . truly travel at its best.

Add it all up: Scenic, low-altitude direct rail line, Fastest Service *without extra fare*, time-saving schedule, and a beautiful, modern Diesel-powered train—it's today's big travel bargain!

THE ROAD OF



EL PASO



TUCSON



PHOENIX

ALSO
THE
GOLDEN
STATE
ROUTE



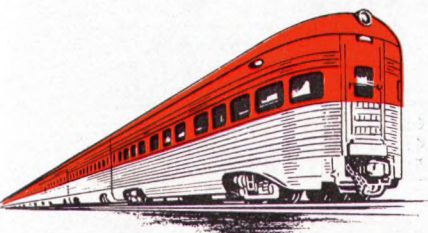
THE *Californian* FASTER-TOO!

Budget-minded travelers get a break, too . . . because the new schedules of our popular economy Tourist Car and reclining seat Coach train clip 5 full hours off the running time, in each direction. Dining car service; Lounge for Sleeping Car patrons. Women and childrens' reclining seat coach. Porter service.

... and on the way for '47

2 SUPER STREAMLINED TRAINS

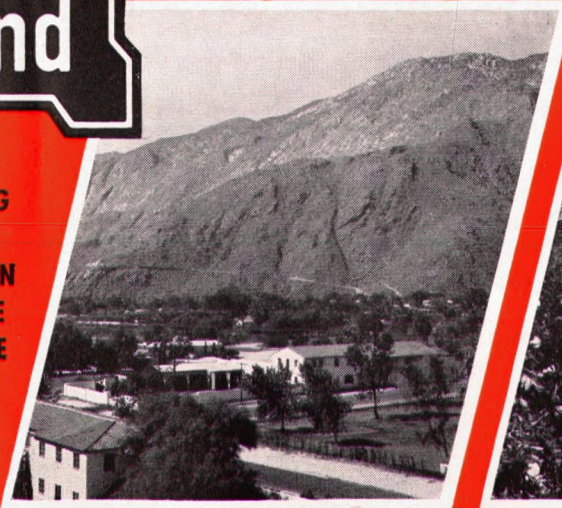
Designed to be the last word in railroad luxury and speed, two super-streamlined trains will provide tri-weekly service over the Golden State Route on a schedule of 39 $\frac{3}{4}$ hours each direction, starting early in 1947. Watch for later announcements about these red-and-silver beauties.



PLANNED PROGRESS

ck
nd

NG
E
DEN
TE
ITE



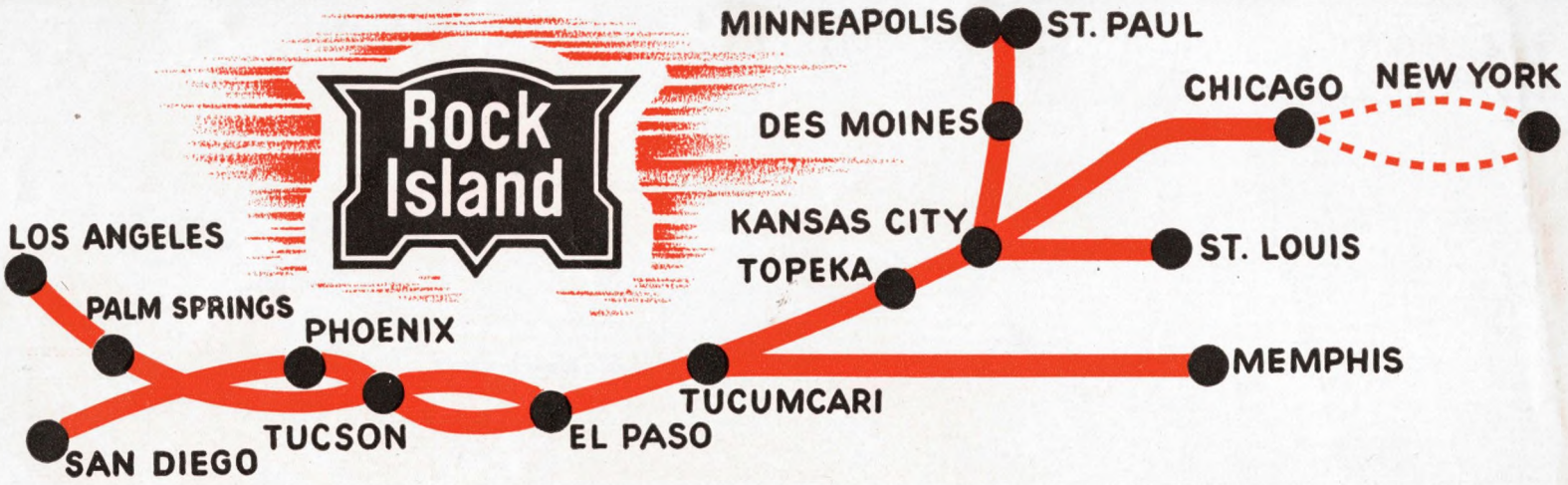
PALM SPRINGS



SOUTHERN CALIFORNIA



LOS ANGELES



SCHEDULES

WESTBOUND Read Down				EASTBOUND Read Up								
47—Daily Southwest Exp.		43—Daily Californian		3—Daily Golden State		4—Daily Golden State		44—Daily Californian		48—Daily Southwest Exp.		
Ex. by Days	Days	Ex. by Days	Days	Ex. by Days	Days	Ex. by Days	Days	Ex. by Days	Days	Ex. by Days	Days	
9:40 A.M.	Su.	8:45 P.M.	Su.	9:30 P.M.	Su.	1:30 P.M.	Tu.	8:30 A.M.	We.	10:25 P.M.	We.	
9:52 A.M.	Su.	8:58 P.M.	Su.	9:42 P.M.	Su.	1:16 P.M.	Tu.	8:15 A.M.	We.	10:13 P.M.	We.	
b 9:30 A.M.	Su.	b 8:50 P.M.	Su.	b 8:50 P.M.	Su.	b 1:40 P.M.	Tu.	c 8:45 A.M.	We.	8:35 P.M.	We.	
2:00 P.M.	Su.	12:35 A.M.	Mo.	1:05 A.M.	Mo.	10:05 A.M.	Tu.	4:05 A.M.	We.	4:30 P.M.	We.	
9:48 P.M.	Su.	7:42 A.M.	Mo.	8:15 A.M.	Mo.	3:10 A.M.	Tu.	8:39 P.M.	Tu.	7:45 A.M.	We.	
10:50 P.M.	Su.	8:50 A.M.	Mo.					7:50 P.M.	Tu.			
8:30 A.M.	Su.			a 11:50 P.M.	Su.	a 12:10 P.M.	Tu.			5:50 P.M.	We.	
6:00 P.M.	Su.			7:30 A.M.	Mo.	7:05 A.M.	Tu.			8:20 A.M.	We.	
		7:30 P.M.	Su.	7:30 P.M.	Su.	6:15 P.M.	Tu.	8:25 A.M.	We.			
		8:15 P.M.	Su.	8:15 P.M.	Su.	5:45 P.M.	Tu.	7:45 A.M.	We.			
		2:40 A.M.	Mo.	2:40 A.M.	Mo.	1:01 P.M.	Tu.	1:10 A.M.	We.			
		7:50 A.M.	Mo.	7:50 A.M.	Mo.	9:00 A.M.	Tu.	8:15 P.M.	Tu.			
11:20 P.M.	Su.	9:20 A.M.	Mo.	8:30 A.M.	Mo.	Lv. Kansas City..... Ar.	2:55 A.M.	Tu.	7:15 P.M.	Tu.	5:00 A.M.	We.
12:50 A.M.	Mo.	10:50 A.M.	Mo.	9:50 A.M.	Mo.	Lv. Topeka..... Ar.	1:30 A.M.	Tu.	5:35 P.M.	Tu.	3:20 A.M.	We.
4:40 P.M.	Mo.	12:45 A.M.	Tu.	8:20 P.M.	Mo.	Ar. Tucumcari..... (C.T.) Lv.	3:50 P.M.	Mo.	5:15 A.M.	Tu.	9:00 A.M.	Tu.
		9:50 P.M.	Su.			Lv. Memphis..... Ar.			6:55 A.M.	We.		
		12:25 P.M.	Mo.			Lv. Oklahoma City..... Ar.			4:05 P.M.	Tu.		
		12:15 A.M.	Tu.			Ar. Tucumcari..... Lv.			5:30 A.M.	Tu.		
Southern Pacific												
4:10 P.M.	Mo.	12:15 A.M.	Tu.	7:35 P.M.	Mo.	Lv. Tucumcari..... (C.M.T.) Ar.	2:44 P.M.	Mo.	3:45 A.M.	Tu.	7:30 A.M.	Tu.
1:30 A.M.	Tu.	8:10 A.M.	Tu.	2:00 A.M.	Tu.	Ar. El Paso..... Lv.	8:10 A.M.	Mo.	7:55 P.M.	Mo.	10:30 P.M.	Mo.
6:38 A.M.	Tu.	c 1:25 P.M.	Tu.	6:38 A.M.	Tu.	Ar. Douglas..... Lv.	3:28 A.M.	Mo.	2:20 P.M.	Mo.	4:40 P.M.	Mo.
11:20 A.M.	Tu.	4:40 P.M.	Tu.	9:16 A.M.	Tu.	Ar. Tucson..... Lv.	12:35 A.M.	Mo.	11:15 A.M.	Mo.	1:05 P.M.	Mo.
2:50 P.M.	Tu.	8:15 P.M.	Tu.	11:55 A.M.	Tu.	Ar. Phoenix..... Lv.	10:00 P.M.	Su.	8:10 A.M.	Mo.	9:40 A.M.	Mo.
1:45 A.M.	We.	7:10 A.M.	We.	8:45 P.M.	Tu.	Ar. Los Angeles..... Lv.	11:15 A.M.	Su.	8:00 P.M.	Su.	9:10 P.M.	Su.
		9:30 A.M.	We.			Ar. San Diego..... (C.P.T.) Lv.			5:25 P.M.	Su.		

a—Via Missouri Pacific.
b—Bus.
c—Via S.P. No. 5.

Note—
Coast to Coast
Pullman Service

Westbound:—Leave New York on the New York Central June 1 and all odd dates during June and July.
Arrive New York on the Pennsylvania R.R. June 2 and all even dates during June and July.
Eastbound:—Leave New York on the Pennsylvania R.R. June 5 and all odd dates during June and July.
Arrive New York on the New York Central June 6 and all even dates during June and July.

No. 3—GOLDEN STATE LIMITED—Daily
Club Lounge Car
Chicago to Los Angeles (Barber Valet Service)
Sleeping Cars
New York to Los Angeles—4 D. BR., 2 D.R., 4 Compt. (Car No.: NYC—5903; Pa—89) (See Note)
Chicago to Los Angeles—4 D. BR., 2 D.R., 4 Compt. (Car 36)
Chicago to Los Angeles—6 Sec., 6 Roomettes, 4 D. BR. (Car 35)
Chicago to Los Angeles—4 D. BR., 2 D.R., 4 Compt. (Car 34)
St. Louis to Los Angeles—6 Sec., 6 Roomettes, 4 D. BR. (Car 94) (Via Mo. Pac. No. 9—St. Louis to Kansas City)
Dining Car—Serving all meals
Coffee Shop Dining Car—Meals and buffet service
Chair Cars (all seats reserved and individually assigned) Chicago to Los Angeles (Cars 38 and 39)
No. 43—CALIFORNIAN—Daily
Club Lounge Car (For sleeping car passengers only)
Chicago to Tucumcari, Tucumcari to Los Angeles
Sleeping Car
Chicago to Kansas City, 12 Sec., 1 D.R. (Car 7)
Memphis to Los Angeles, 10 Sec., 1 D.R., 2 Compt., (Car 77) From Memphis on No. 111
Tourist Sleeping Cars
Chicago to Los Angeles (Cars 431-432 and 433)
Chicago to San Diego (Car 430)

EQUIPMENT (Air Conditioned)

Women's Chair Car (Box lunches available)
Chicago to Los Angeles (for use of women and children) (Porter Service)
Chair Cars and Coaches (Box lunches available)
Chicago to Los Angeles. Chicago to San Diego
Memphis to Los Angeles (From Memphis on 111)
Memphis to San Diego (From Memphis on 111)
Dining Car—Serving all meals
No. 47—SOUTHWEST EXPRESS—Daily
Parlor Car
Chicago to Rock Island (Rock Island Car 114)
Dining Car—Chicago to Rock Island
Coaches—Chicago to Los Angeles
No. 4—GOLDEN STATE LIMITED—Daily
Club Lounge Car
Los Angeles to Chicago (Barber Valet Service)
Sleeping Cars
Los Angeles to New York—4 D. BR., 2 D.R., 4 Compt. (Car No.: NYC 42; Penna 43 (See Note)
Los Angeles to Chicago, 4 D. BR., 2 D.R., 4 Compts. (Car 46)
Los Angeles to Chicago—6 Sec., 6 Roomettes, 4 D. BR. (Car 45)
Los Angeles to Chicago—4 D. BR., 2 D.R., 4 Compts. (Car 44)
Los Angeles to St. Louis—6 Sec., 6 Roomettes, 4

D. BR. (Car 41), (Kansas City to St. Louis Mo. Pac. No. 12)
Dining Car—Serving all meals
Coffee Shop Dining Car—Meals and Buffet Service
Chair Cars (all seats reserved and individually assigned)—Los Angeles to Chicago (Cars 48 and 49)
No. 44—CALIFORNIAN—Daily
Club Lounge Car (for sleeping car passengers only)
Los Angeles to Tucumcari—Tucumcari to Chicago
Sleeping Car
Kansas City to Chicago—12 Sec., 1 D.R. (Car 7)
Los Angeles to Memphis, 10 Sec., 1 D.R., 2 Compt., (Car 67). To Memphis on No. 112
Tourist Cars
Los Angeles to Chicago (Cars 446, 447 and 448)
San Diego to Chicago (Car 443)
Women's Chair Car (box lunches available)
Los Angeles to Chicago (for use of women and children only) (Porter service)
Chair Cars and Coaches (box lunches available)
Los Angeles to Chicago—San Diego to Chicago
Los Angeles to Memphis—Tucumcari to San Diego to Memphis—Memphis on No. 112
Dining Car—Serving all meals
No. 48—SOUTHWEST EXPRESS—Daily
Coaches
Los Angeles to Chicago

P. W. JOHNSTON
General Passenger Agent
Kansas City, Mo.

I. C. BRUCE, Assistant Passenger Traffic Manager
A. D. MARTIN, Passenger Traffic Manager
Chicago, Ill.

T. W. BOWDRY
General Passenger Agent
Fort Worth, Texas