

1947

# Pilgrim Tours







# Thrilling, Romantic Vacations in NEW ENGLAND and EASTERN CANADA

---

**ONE RATE COVERS ALL MAJOR EXPENSES**

**... RESERVATIONS ASSURED**

CLOSE your eyes and dream . . . of glorious days on a sun-swept beach . . . of rollicking fun on a sailing sloop, or a hike over the dunes . . . of strolling through quaint cobble-stoned lanes . . . or of golf on fairways that fringe the sea . . . of visiting places that were old a century ago, while you live in modern comfort at friendly inns and hotels.

Dream of a wonderful vacation . . . with all reservations and details arranged in advance for you . . . a holiday packed with thrilling adventure or rest and relaxation, just as you prefer.

Whatever you dream, you can make it come true . . . for you'll find in this booklet the itineraries for 50 different Pilgrim Tour Vacations . . . each planned and expertly supervised by The New Haven Railroad Travel Bureau. They're happy, carefree vacations . . . the safe way of making sure that *your* vacation will be full of fun and good times from the moment you start . . . for every 1947 Pilgrim Tour represents the culmination of all that The New Haven Travel Bureau has learned in years of helping thousands of people to really know and enjoy New England.

Pilgrim Tours are recommended by leading travel agencies from coast-to-coast. Reservations may be made through selected Travel Agencies in your own community—or directly through The New Haven Railroad Travel Bureau, Grand Central Terminal, New York, N. Y.





LUXURIOUS AIR-CONDITIONED TRAINS



FAMOUS NEW HAVEN DINERS



# It's more fun to go by Train!

**Make every minute of your vacation count . . .  
Travel relaxed in modern Air-conditioned Comfort**

**F**ROM beginning to end Pilgrim Tours are planned for fun and relaxation. Whether you go for two days or two weeks a Pilgrim Tour means traveling in roomy comfort on cool, air-conditioned trains . . . seeing more scenery because you don't have to keep your eyes on the road . . . enjoying delicious, fresh food at mealtime . . . knowing that you have a guaranteed reservation for a clean, comfortable room at a popular hotel every night . . . having more time for sightseeing, shopping, sports and relaxation . . . being able to take unusual boat trips . . . enjoying conducted trips to famous historic and out-of-the-way places . . . feeling carefree, footloose and having the time of your life. If this sounds too good to be true, let's see what really happens when you travel by train . . .

First, your Pilgrim Tour rate includes round trip transportation on modern trains, and regular meals enroute, as well as hotel accommodations and sight-seeing trips.

When you step aboard the New Haven Railroad you can forget about the weather . . . for the cars are air-conditioned to maintain cool, even temperature regardless of how hot it may be outside. Everything is spic and span because air-conditioning makes it possible to seal the big coach window against dirt and dust.

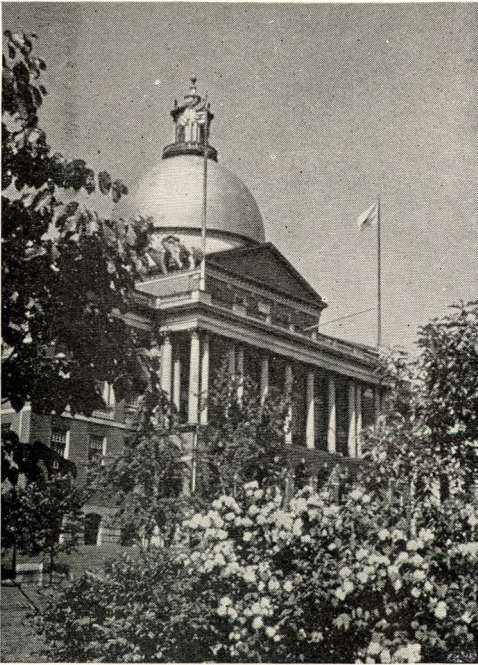
Next, you'll find that Coach seats on the New Haven are something extra special . . . big, generous seats with soft restful cushions that feel so good!

As the miles click off, a fascinating panorama of beaches, boats and open sea sweeps past your window . . . for the New Haven's Scenic Shoreline Route takes you along the picturesque coastline of New York, Connecticut and Rhode Island.

If you feel like moving around a bit there are immaculate, modern rest rooms. And when you're hungry there's the superb food ready for you in famous New Haven Colonial Diners or smartly appointed Grill Cars.

Time passes so swiftly that before you realize it, you're at your destination. You're relaxed . . . it's a wonderful world . . . you're on a *real* vacation!





STATE HOUSE, BOSTON



MAIN STREET, NANTUCKET



LIGHT HOUSE, CAPE COD



HISTORIC PLYMOUTH ROCK



You haven't seen America until you've seen

# GLORIOUS NEW ENGLAND

**I**F your pulse quickens when the Stars and Stripes go by, then New England should be the most fascinating place in the world for you.

For here it was that the first little band of Pilgrims stepped ashore at Plymouth Rock in 1620. Here is where the drama of America's early struggle for freedom took place . . . the site of the Boston Tea Party . . . the hallowed battlefields of Bunker Hill, Concord and Lexington . . . the old churches where Washington prayed, and billeted his troops . . . the weathered buildings that once sheltered men whose names are immortal.

Here, too, on Cape Cod and on the islands of Nantucket and Martha's Vineyard are century old fishing villages that still make up a large part of New England's great fishing industry . . . the museums and well preserved relics that tell of whaling days when iron men sailed wooden ships in quest of sperm oil.

Wherever you go in Massachusetts, Connecticut and Rhode Island you'll find romance and history to fire your imagination . . . the very homes and furnishings hewed from the forests by early settlers . . . the pillories and whipping posts that meted justice in witchcraft days . . . the narrow tree-shaded streets where friendly antique shops now occupy old colonial homes.

And with it all, you'll find scenic beauty and opportunities for outdoor sports that are unsurpassed anywhere . . . miles upon miles of smooth sandy beaches . . . gentle surf warmed by the Gulf Stream . . . rare opportunities for sailing and fishing . . . hikes that become venturesome explorations . . . or just lolling on the beach while a soothing sun supplies your vacation tan.

Then there's the beauty of New England's hill and mountain country . . . the lovely Berkshires laced with sparkling lakes and mountain streams . . . championship golf courses and bridle paths that wind through the woods . . . the summer theaters and gay social activities that go hand-in-hand to make the Berkshires one of America's most sophisticated playlands.

Or perhaps you'd prefer the more rugged White Mountains . . . the grandeur of famed winter sports areas in summertime . . . Franconia Notch



and awesome Flume Gorge . . . Cannon Mountain where an Aerial Tramway takes you 4,000 feet into the sky to survey a panorama that covers three states and part of Canada.

All this, then, is New England . . . *your* New England where America was born . . . a gloriously beautiful vacationland of sea and sun, mountains and forests, great cities and quaint villages, history and romance. It's all yours to enjoy easily, as you wish.

But let's not stop . . . for just to the northwest lies another world for you to explore . . . the historic area around Lake Champlain and Fort Ticonderoga, once the disputed water gateway between French Canada and the British Colonies . . . the famed resort area of the Adirondacks where Lake Placid and Mirror Lake gleam lazily among the mountains.

Scarcely more than overnight from New York City on the New Haven Railroad and you're in Eastern Canada where old France came to live hundreds of years ago and stayed! You'll love Montreal, the "Paris of North America", with its magnificent cathedrals and monuments, its spacious parks and broad boulevards . . . the never-to-be-forgotten view of the city and the St. Lawrence River from atop Mt. Royal. A few days in Quebec will provide weeks of things to talk about when you return home . . . the somber, moss-grown ramparts built to defend the city long ago . . . the gayety that centers in huge, impressive Chateau Frontenac . . . the medieval atmosphere of an old, old city that still lingers midst a galaxy of smart shops . . . the picturesque countryside where rural folk still plow with oxen, and spinning wheels hum as they did hundreds of years ago.

And then the majesty of Canada's wild and primitive Laurentians, with the luxurious Hotel de La Pointe Bleue set deep in an untamed wilderness "a thousand miles from nowhere"—or perhaps your wanderlust calls for a trip in the other direction to Nova Scotia and the Gaspé Peninsula.

If it's thrills from a deck chair you want, trim white steamers will take you down the St. Lawrence and up the scenic Saguenay . . . and across Lake Ontario to Queenston . . . or yet another cruise down the historic Hudson River.

Yes, your 1947 vacation can hold all the adventure and romance you've ever dreamed of . . . yet these few words are but a fleeting taste of what's in store for you—through the Pilgrim Tours described on the pages that follow.



# America's Vacationland

**HISTORIC MASSACHUSETTS · CAPE COD · NAN-  
TUCKET · MARTHAS VINEYARD · THE BERKSHIRES  
NEW YORK · WHITE MOUNTAINS · GREEN  
MOUNTAINS · MAINE · AND EASTERN CANADA**

**BOSTON . . .** You will want to visit Beacon Hill, a bit of old England . . . with its cobblestoned streets, fascinating antique shops, and aristocratic Louisburg Square, . . . crowned with the distinguished State House designed by Bulfinch in 1795. Below it stretches green-carpeted Boston Common with its border of stately elms, and the Public Gardens, one of the most beautifully kept garden spots in America. Here the famous swan boats symbolize the leisurely pace of old Boston. Bordering the Public Gardens and the Common is Boston's shopping area, well worth a window shopping expedition.

No matter where you wander along Boston's winding streets, there will be constant reminders of America's heroic struggle for freedom. You will see the site of the Boston Massacre in 1770, Old Granary Burial Ground with the headstones of Paul Revere, John Winthrop, and believe it or not, Mother Goose. The Old State House, seat of Britain's rule and King's Chapel where Colonial Governors worshiped — the colorful waterfront, scene of the Boston Tea Party, Old North Church where hung the lanterns that started Paul Revere on his famous ride, the house he lived in, Faneuil Hall, Boston's "cradle of liberty", and the Custom House tower, from which you can get a bird's eye view of old Boston, and spot for yourself the landmarks of history — all faithfully preserved amid the towering modern buildings that mark the progress of one of America's first cities.

But Boston is not all "landmarks of history" . . . there are fascinating shops and famous department stores. There are the Pops Concerts in Symphony Hall or in the

Hatch Memorial Shell on the banks of the Charles River. There are theatres, air conditioned movies, or you may dance under the stars atop one of Boston's fine hotels.

**Charlestown . . .** A little out of the way but worthy of a visit is the U. S. Frigate Constitution, more often referred to affectionately as Old Ironsides. It is anchored in the Navy Yard and is complete with rigging and the original cannons that made history in the War of 1812. Nearby is Bunker Hill Monument, and a statue of Colonel Prescott, who gave the famous battle order, "Don't fire until you see the whites of their eyes".

## **Cultural Back Bay and Cambridge**

The picturesque Charles River with its fleets of cat-boats, sleek yachts and racing shells, flows through the heart of greater Boston. Along its friendly banks, a beautifully landscaped Esplanade invites you to a leisurely afternoon stroll, or to an evening with Arthur Fiedler, conducting a symphony orchestra there at the foot of Beacon Hill.

The dome of the First Church of Christ Scientist towers above the rooftops of the mansions that line famous Commonwealth Avenue and Beacon Street, pointing the way to one of Boston's most unique exhibits — the Mapparium of the Christian Science Publishing Society — a spherical room with colored glass walls depicting the map of the world, through which you can walk on a bridge of glass.

Nearby is Symphony Hall, where the popular Pops concerts are held nightly in a genuinely "Continental" atmosphere. Here you sit at small tables and sip refreshments



while enjoying a musical fare that ranges from Johann Strauss to Gershwin or Cole Porter. The Museum of Fine Arts, Mrs. Jack Gardner's Venetian Palace, the Back Bay Fens with their famous Rose Garden are sights to be seen before crossing one of the several graceful bridges that span the Charles River and lead to Cambridge, University City of New England. The impressive columns of the Massachusetts Institute of Technology (M.I.T) and the white and blue spires of Harvard dominate the northwest bank of the Charles. Radcliffe and Simmons Colleges contribute their share to the huge educational population of this ancient town.

At Harvard's Agassiz Museum you may see the amazing collection of glass flowers blown with astonishing delicacy of detail, botanically accurate in every respect. On Brattle Street you will pass down Tory Row, a group of famous estates and mansions that includes the home of Henry Wadsworth Longfellow. Other historic shrines are the Home of the Village Blacksmith, site of the "spreading chestnut tree," the homes of James Russell Lowell and that "magnificent Yankee," Oliver Wendell Holmes. Old Cambridge figured prominently in the troublous days just prior to the Revolution, and it was William Dawes who made the midnight ride over the Great Bridge into Cambridge with the message that the Redcoats were coming. His companion on that eventful ride was Paul Revere, who galloped on to Lexington and Concord to arouse the Minutemen to action.

**Lexington and Concord . . .** It was on Lexington Green, where the local farmers gathered to resist General Gage's march on Concord. It was here that Captain John Parker's oft-quoted order was given, "Stand your ground; don't fire unless fired upon, but if they mean to have a war, let it begin here." Nearby is Buckman Tavern where the Patriots met and planned their heroic defense, and the Hancock-Clark House where Samuel Adams and John Hancock were hidden.

Concord with its military stores was the prime objective of British troops on that fateful day in 1776. And it was at Con-

cord's Old North Bridge "where the embattled farmers stood and fired the shot heard 'round the world." You will see a replica of this bridge, and the original of the Minuteman Monument that was the War Bond symbol throughout World War II. Ralph Waldo Emerson, and his friend, Henry David Thoreau, Nathaniel Hawthorne, and Louisa May Alcott lived and worked in Concord. You may see their homes and enjoy the peaceful charm of old New England — the elm shaded streets and the slow moving river that inspired them to write some of America's finest verse and prose.

**Wayside Inn . . .** Not far from Concord stands Henry Ford's Wayside Inn, a restoration of the famous Red Horse Tavern. Better known as the Wayside Inn, immortalized by Henry Wadsworth Longfellow in his "Tales of a Wayside Inn." Here, members of Pilgrim Tours will have luncheon in the very room where these charming tales were first told. Today the Wayside Inn is authentically re-furnished with many of the original pieces, and stands out as one of the best known old stagecoach inns in New England. Nearby you will see the Little Red Schoolhouse of Mary and her Lamb, a restored Blacksmith Shop, a working water-powered Gristmill, where corn flour is ground daily for visitors, and the Carriage House containing several fine examples of early coach work. In its day the Inn entertained many distinguished guests including George Washington and Lafayette.

## **THE NORTH SHORE OF BOSTON**

A varied panorama of New England is presented along Boston's north shore. There are quaint fishing villages, artist colonies, rockbound coasts, long stretches of ocean beach, historic old towns and houses, many beautiful estates and fashionable seaside resorts.

**Marblehead . . .** A gay little seaside village, its narrow twisting lanes a riot of color, its network of old houses and charming Colonial doorways steeped in the tradi-



tions of yesterday. Marblehead harbor is host all summer long to palatial yachts, fishing boats, and fleets of sleek sailing craft. You may see the home of Molly Pitcher, Skipper Ireson, and Colonel Azor Orne who loaned the Continental Congress a barrel of silver dollars . . . Abbott Hall, containing original painting of "The Spirit of '76" . . . The Parson Barnard House . . . and The Old Town House, scene of pre-Revolutionary town meetings — Fort Sewell, whose guns once gave shelter to "Old Ironsides" is now an attractive park overlooking Marblehead harbor. Marblehead Neck, the home of an exclusive summer colony, is famous for the Churn, a fissure in the rocks that sends up a foaming spray rising to a height of 50 feet in a heavy sea. Nearby Castle Rock rises sheer from the sea, offering an unsurpassed view of the billowing surf.

**Salem . . .** "City of Witches" and one of New England's treasure houses of antiquity. Here you will find every type of Colonial architecture, from the quaint gambrel-roofed house where Nathaniel Hawthorne was born in 1804 to the great Federal mansions of the merchant princes. Here will be seen the Old Witch House, site of the Whipping Post, and Gallow's Hill where those condemned for witchcraft were hanged. Highlight of your Pilgrim Tour of old Salem is the famous House of Seven Gables, setting for Hawthorne's novel of that name. Here you may climb the secret stairway tucked away behind a hidden panel — wander through the rambling interior, then step out into the colorful garden to count the gables, all seven of them. If you are interested in how the Puritans lived in 1630, visit Pioneer's Village, an accurate reproduction of the dugout and primitive cabins, the Governor's House with its huge central chimney, blacksmith forge, sawpit, the whipping post and stocks that seemed to go hand in hand with the village life of our forefathers.

**Beverly, Prides Crossing, Manchester-By-The-Sea and Magnolia** are noted for their beautiful summer homes and estates. Oliver Wendell Holmes and his son Justice Holmes, John Cabot, Roger Conant, were some of the famous residents.

**Gloucester and Rockport . . .** best symbolized by the Gloucester "Fisherman", a bronze statue dedicated to "they that go down to the sea in ships." Here the seafaring traditions of three centuries still linger about the picturesque wharfs with their colorful fishing fleets forming a sea of masts against a skyline of weathered roofs and spires. Here you may visit the fisheries, and nearby Eastern Point and Bass Rocks for a superb view of the churning sea. Out at the tip of Cape Ann is Rockport, a favorite haunt of artists. A thoroughly delightful fishing village built on a rocky ledge above the sea, forming compositions of simplicity and beauty, of which Rockport artists never seem to tire.

**Evening Tour from Boston** includes a delicious Shore Dinner as only New England can prepare it . . . with your choice of chicken or lobster. It will be a never-to-be-forgotten evening. Your motor coach passes the North Shore beaches . . . Marblehead with its colorful harbor . . . Salem, famous for its witch hunts and hangings, visiting Pioneer Village and Hawthorne's House of Seven Gables.

## PILGRIM SOUTH SHORE

A charming combination of seaside and countryside . . . of roads that skirt the sea, towns that reflect the character and ingenuity of those who cleared the land and pioneered in its development.

Your Pilgrim Tour will take you past Boston's beaches and yacht harbors . . . to QUINCY, the "Granite City," and birthplace of two Presidents, John Adams and John Quincy Adams. Here, you will see the houses where they were born and the mansion where they lived. "Church of the Presidents," built of Quincy granite, stands a fitting memorial to the town's illustrious sons.

HINGHAM'S Old Ship Meeting House, built in 1681 by a ship's carpenter, is believed to be the oldest church in the United States. Following Jerusalem Road, which winds between rock-bound shore, salt ponds and magnificent summer estates, you come to COHASSET. Here is a typical village green surrounded by gracious Colonial man-



sions. Centering on the green is the First Parish Meeting House with a Carrillon of 51 bells. Two miles off shore lies famous Minot's Light, inspiration of artist and poet alike. At SCITUATE, a rambling South Shore fishing village, there is a mill pond well of "Old Oaken Bucket" fame — and an old grist mill built in 1640, just 20 years after the Pilgrims landed. At MARSH-FIELD you can see the weathered mansion where Governor Winslow lived . . . The site of Daniel Webster's home . . . and his grave close by. The approach to DUX-BURY is dominated by the towering Miles Standish Monument, overlooking a peaceful bay. Nearby is the original house John Alden built for his bride, Priscilla.

**Plymouth . . .** Landing place of the Pilgrims, is a well-preserved old town that takes pride in its heritage, and never allows you to forget that the history of Plymouth is the history of America. Plymouth Rock lies protected under a pillared portico at the waterfront. Directly above is Cole's Hill, where stands the statue of the Pilgrim's good friend Massasoit — and the Sarcophagus that is a grim reminder of those who didn't survive the first terrible winter. Walking straight up Leyden Street, past early Colonial houses set close to the sidewalk, you will come to Burial Hill, where you can enjoy a panoramic view of the old town and Plymouth Harbor. Here, too, are some old headstones marking the graves of the Forefathers. See the relics and paintings in Pilgrim Hall, the houses of Richard Sparrow, John Howland and Kendall Holmes. The gambrel-roofed William Harlow House was built in 1677 of timber from the Old Fort on Burial Hill. It is authentically furnished in its own period, and here the early domestic life of the Pilgrims is re-enacted for the benefit of Plymouth's thousands of annual summer visitors. Other points of interest are the Brewster Gardens where the statue of the Pilgrim Maiden stands . . . the National Monument to the Forefathers, and the Village Green, with its grouping of authentic Colonial homes. If your sightseeing hasn't taken too long, there may be time to browse around the antique and gift shops on Plymouth's busy main street.

**CAPE COD . . .** Here the flavor of old New England is faithfully preserved . . . in the old houses that line the quaint main streets of village and hamlet . . . grey weatherbeaten old saltbox houses that seem to have grown out of the ground where they stand . . . tiny little white Cape Cod cottages with gay fenced-in gardens . . . stately Colonial mansions grouped formally around the village green . . . historic old taverns and inns . . . windmills turning slowly in the winds . . . gleaming lighthouses on high bluffs facing the sea. These all stand as symbols of a by-gone age . . . of sailing ships and the gallant men who sailed the seas in the eternal quest for adventure. Today on the Cape you will find antique shops with many treasured heirlooms of these stirring days. Much of the charm of Cape Cod is due to the preservation of the old landmarks which form a fascinating background for your Pilgrim Tour.

### **Falmouth and Falmouth Heights**

Your stay on the Cape may be centered around Falmouth, a handsome town with stately mansions around a charming village green. A resort town with movie theatres . . . and many fascinating shops. Nearby Falmouth Heights is a fashionable beach resort built on a bluff and commanding a splendid view of Vineyard Sound. You will enjoy the hotel's private beach, with crystal clear water that averages 70° all summer long. It's modern Cape Cod with plenty of dash and go.

**Provincetown . . .** It was here the Pilgrims first landed on a bleak November 11th in 1620. A monument, dedicated by President Taft, commemorating that fact, dominates this end of the Cape. The town itself, surrounded by dunes and sea, is closely knit into a fascinating pattern of tiny lanes bordered by tinier houses with gay little gardens. Artists' studios and shops line the narrow main streets, with wharves that go straight out to sea on forests of barnacled piles. No wonder Provincetown has become the summer center of art and letters and the theatre! The Town Crier, last of his line in America, daily calls the news through the quaint streets . . . news of things to do and see, of night clubs, fun



and frolic in this gayest of old Cape Cod seaports!

**Provincetown . . .** Tours can be arranged covering other charming Cape towns . . . age-old Sandwich, home of the prized "Sandwich Glass" . . . Yarmouth with its stately elm-lined Main Street . . . Dennis with its famous Playhouse and Cinema . . . Brewster, Orleans and Eastham, home of the sea captains . . . Wellfleet and Truro, the Cape's whaling centers in days gone by . . . flanked by rolling dunes and miles of surging sea.

On the other side of the Cape, Chatham with its rugged coast and wreckage of luckless cargo ships . . . Harwichport with its diminutive harbor alive with pleasure craft . . . Hyannis, the summer shopping center of the Cape . . . all are worthy of a visit if your summer vacation schedule permits.

## NANTUCKET

An enchanted island with all the things you hope to find in a visit to Old New England. The calendar has moved on and the comforts of modern living have come to Nantucket, but the years have left untouched the flavor and beauty of an old Colonial seaport settled by the Quakers almost three centuries ago. Here is a haven of peace and contentment far removed from the rush and turmoil of city living . . . cobblestoned streets, narrow, winding lanes lined with lovable little gray shingled houses, brightened by gay gardens and rows of tall hollyhocks . . . magnificent Colonial mansions built with sperm oil wealth wrested from the seas by sturdy whalers of a colorful, long-ago era . . . tempting antique shops . . . windmills and lighthouses . . . and everywhere the well preserved remembrances of a proud historic background

You'll want to see the Old Mill, built in 1746, still turning slowly in the summer breeze as it grinds out cornmeal between massive mill stones for summer visitors. The Jethro Coffin House, dating back to 1686, stands silhouetted against the sky on Sunset Hill, its tiny leaded casements and hand-wrought hinges paying tribute to a vanished past. Inside is the original fireplace with its famous horseshoe chimney,

and much to remind one of the almost legendary life of the early settlers.

Then there is the Maria Mitchell House, home of America's first woman astronomer, containing souvenirs of her unusual career . . . The Old Jail . . . The Whaling Museum, located in a former sperm oil candle factory, containing precious documents, implements and sundry relics of whaling days on old Nantucket . . . the home of Elihu Coleman, one of the first men to draw up an anti-slavery document . . . The Pacific Club, whose roster is limited to descendants of those Nantucketers who sailed the Pacific Ocean . . . The Hunt Club, famous as the only summer hunt club in America. These are but high spots in the infinite panorama of beauty and history you'll find on the Island of Nantucket.

The fascination of Nantucket serves as a priceless frame to enhance the summer entertainment you may enjoy here. Choose your spot for sun bathing along miles of sandy coastline . . . or swim in the translucent blue surf, tempered to a mild 70° by the friendly Gulf Stream. There is a children's beach in the sheltered harbor, within a stone's throw from the steamer wharf, and two well equipped broad white beaches on beautiful Nantucket Sound, where a gay bathing society gathers at the proper hour.

If it's boating you want, you'll find the royalty of Yachtdom anchored in Nantucket's fine harbor . . . ranging from the tiny "cats" of the younger generation's rainbow fleet to the sleek, swift sailing craft that compete for top honors in the colorful regattas off Nantucket.

Here, too, is a fisherman's paradise. You'll find good fishing in Nantucket's ponds, along her miles of inviting surf . . . or offshore from the decks of hired fishing craft, skippered by men who know the "lay of the sea." Boats equipped with heavy tackle need go no further than Nantucket's nearby waters for swordfish and tuna. And Great Point and Smith's Point are famous for bluefish and striped bass.

For land sports there are excellent clay courts for tennis . . . well kept golf courses where you tee off toward the open sea, over natural hazards provided by rolling moors . . . splendid saddle horses for hire . . . or



perhaps you would prefer a bicycle to pedal through the unspoiled countryside.

**Siasconset . . .** Just a short distance from Nantuckettown, set high on a bluff above the sea, lies the village of Siasconset (popularly shortened to 'Sconset) . . . with its bright rose covered cottages . . . gay fenced-in gardens . . . many of them the homes of writers and artists. To Nantucketers, 'Sconset means "golf" for two of the Island's three 18-hole golf courses are located here.

## MARTHA'S VINEYARD

A complete, conducted sightseeing tour of this picturesque island is included in several Pilgrim Tours. You will visit Oak Bluffs . . . a village of contrasts, and the "playground" of the Island. Gay cottage communities with bright little gardens . . . the picturesque harbor filled with small craft of every description . . . and miles of white sand beaches.

**Edgartown . . .** setting for Henry Bettle Hough's best seller, "The Country Editor," is the oldest settlement on the island. Along its shaded streets are the proud homes of former sea captains, resplendent with "widow's walks," fanlight doors, and golden spread-eagles. Of special interest are the Thomas Cooke House, the Dukes County Memorial Society Museum and the picturesque waterfront.

**Vineyard Haven . . .** A flourishing summer resort town situated at the innermost point of V-shaped Vineyard Harbor. At the entrance to the harbor the tips of the V are capped with East Chop Light and West Chop Light, two famous landmarks. Vineyard Haven's short side streets which drop down to the water, are constant reminders of those salty days long ago when the whole business of this place was to go down to the sea in ships.

**Menemsha and Gay Head . . .** Out at the far tip of Martha's Vineyard a quaint little fishing village nestles at the foot of a high bluff. Lobstermen and swordfishermen dock at the tiny wharves . . . and if the scene of their comings and goings is

"picturesque," that's the business of the artists and photographers, not theirs. A little farther along the roller coaster road through the dunes, is GAY HEAD, where you see the scattered homes of the Indians (last remnant of the Gay Head tribe), their school house, church and Town Hall. They still till the soil with oxen . . . make pottery of the gaily-colored clay taken from the cliffs, using designs handed down from family to family. The precipitous Gay Head cliffs are surmounted by a sombre brown lighthouse . . . a friendly beacon to the ships at sea. You are invited to visit the lighthouse keeper, and of course you are free to clamber down the steep clay formations to examine at close range the many colored pigments that make Gay Head one of the most unusual sights in America today.

## THE BERKSHIRE HILLS . . .

Though a part of the Appalachian system, these hills have a character and flavor all their own. Gentle rolling hills, meadows and deep woods offer a charming background for all the pleasures of vacationland. Historic houses and little white churches blend with modern hotels and dude ranches to satisfy the tastes of every vacationist.

**Pittsfield . . .** In the shadow of Mount Greylock, high in the Berkshires, is a must-see for lovers of the historic and beautiful. A sun dial marks the *Site of the Old Elm* beneath which stood Holmes, Longfellow, Hawthorne, Melville and Lafayette. Pittsfield's Museum of Natural History boasts one of the most unusual "mineral rooms" in the country. Nearby are crystal clear lakes . . . famous golf courses and opportunity for all outdoor sport.

**Great Barrington . . .** Your trip takes you to the town where William Cullen Bryant was a clerk and practiced law. The house which bears his name is now a summer tearoom in the garden of the Berkshire Inn where you will stay. This is one of the most distinguished of New England hotels. In the heart of the Berkshires, Great Barrington offers an ideal setting for a perfect summer vacation — with oppor-



tunity for sport and relaxation. A motor trip through the beautiful shire towns with their pure colonial beauty is a highlight of Berkshire Pilgrim Tours. Short stop is made at Tanglewood, the home of the famous Berkshire Symphonic Festival.

**NEWPORT, R. I. . . .** Here, completely surrounded by water and cooled by ocean breezes lies America's society capital. Lining the broad avenues and along the shorefront are the estates of the "400" ranging from marble palaces with exquisitely landscaped formal gardens, to turreted castles and luxurious, rambling seaside homes set back in acres of tree-shaded lawns. You can walk right through their front yards if you wish on the famous "Cliff-Walk," a public way that winds along the rockbound coast.

This is the Newport of the Social Register and Who's Who in America . . . where society gathers for exclusive garden parties . . . beach parties at Bailey's Beach . . . and more parties aboard the palatial yachts riding proudly in the harbor.

This is the modern background for a Pilgrim Tour that is different. You will live at one of Newport's finest hotels. You can play golf or tennis, go boating, or just relax and enjoy the brilliant spectacle of Newport at play. Best show of the summer is staged daily in waters around Newport with formal and informal races between sailing craft of every type.

But all is not new in Newport — oldest landmark in town is the Old Stone Mill said to have been built by the Vikings in 1040 A. D. Then there is the Old Town with its pre-revolutionary homes and taverns, the old Colony House, State House, and Brick Market — rich in historic associations . . . for here was the summer rendezvous of the aristocracy of the Old South, who came to Newport in Packet Ships to enjoy the delightful climate of Rhode Island shores.

Arrangements can be made at your hotel for a ten-mile ocean drive tour around Newport, with a chauffer-guide who knows who's who, and why. He may tell you many an inside story of the scions of wealth who spend their summers here. Another worthwhile destination is the Naval War

College, where the U.S.S. Constellation, America's oldest fighting vessel, is anchored.

Indeed, there is an endless variety of entertainment and amusement in Newport . . . with music and dancing, moving picture shows and summer theatre programs to make your evenings bright and gay.

**MAINE . . .** with its rugged rock-bound coastline, forming innumerable bays, bordered with fragrant pine and balsam . . . in one of America's most picturesque spots.

**Portland . . .** is one of New England's first maritime cities with a rich history behind it. You will enjoy Casco Bay with its 365 fascinating islands, Fore River and Back Cove with the impressive Baxter Boulevard. Among the interesting places to see is the birthplace of Henry Wadsworth Longfellow and, of course, the waterfront.

**Bar Harbor and Acadia National Park** way down the Maine coast, on Mt. Desert Island, is a spot so choice that it has been developed into a National Park, the only one in the East. Bar Harbor, with its heady salt tang, is the exclusive fashion resort here. **ACADIA NATIONAL PARK** is indeed one of the most beautiful natural settings on the New England coast and is typically Maine. A trip is planned along the scenic Ocean Drive. Seal Harbor and Northeast Harbor, prominent yachting basins, are hosts to boats of all sizes. Farther down the shore is **Somes Sound**, a fjord-like inland lake with steep cliffs towering on each side. Then up the winding Mt. Cadillac Summit Road offering a dramatic panorama of the islands and rocky coast below.

## **WHITE MOUNTAINS . . .**

This is a wild and rugged country, filled with tumbling streams, proud groves of pine and spruce, roads lined with white birch . . . lakes reflecting the glory of the mountains. Then, tucked away in the valleys, little towns and villages with their white houses, graceful church spires, and rows of interesting shops.

Your Pilgrim Tour enters the White Mountains area through Conway. Here



you will find one of the few remaining covered bridges.

**North Conway . . .** The unique Skimobile rises 1300 feet to the top of Cranmore Mountain. In some Pilgrim Tours you are taken up in electrically-driven miniature automobiles at 5 miles per hour. From the top, a wide and beautiful view of the surrounding country can be enjoyed.

From here, you pass Intervale and Glen . . . then through Crawford Notch, a picturesque pass through the mountains . . . and Bretton Woods, site of the International Monetary Conference.

**Mount Washington . . .** In some Pilgrim Tours, a trip by motor car up the tortuous toll road and by Cog Railway to the summit of Mt. Washington is included. From Tip Top House on clear days there are spectacular views of distant mountain ranges . . . mirror-like lakes and twisting rivers and roads that help you get your bearings.

**Franconia Notch . . . Flume Reservation . . .** The Flume Gorge was cut by nature down through 70 feet of rock. Dashing falls, splashing rapids and treacherous whirlpools are seen from every vantage point as you climb the stairways, cross the gorge on wooden bridges and stroll along well-built paths. A trout pool is nearby where you can observe the "big ones" at close range.

**The Old Man of the Mountains** gazes sternly out from Profile Mountain, 1200 feet above sparkling Profile Lake . . . The most photographed face in the White Mountains.

**Cannon Mountain Aerial Tramway . . .** The base station is well stocked with gifts and souvenirs . . . and it is from here that the thrilling ascent is made, in a tram-car carrying 27 passengers. You move swiftly and smoothly in eight short minutes to the summit of Cannon Mountain, 4000 feet up, where you can sit in a comfortable deck chair and survey at your leisure the spectacular panorama that extends over three States and Canada.

Among the other places visited are *Crys-*

*tal Lake . . . Mt. Chocorua*, reflected in Lake Chocorua, one of New Hampshire's most photogenic scenes . . . the surrounding Lakes . . . the little towns and hamlets, with their white houses, and graceful church spires rising from beside well kept village greens.

## THE GREEN MOUNTAINS

Vermont is truly a state of mountains — different in character from other mountainous regions of our country — friendly and green with fertile valleys flowing between. Perhaps their gentleness is the reason travelers feel a deep sense of peace when driving through them. Practically every town in Vermont has its eminence, for there are more than 900 peaks whose summits are 2,000 feet or more above sea level, and seven are 4,000 feet or higher. Every turn of the road reveals a new scene of breath-taking beauty.

**Montpelier . . .** The Capital of Vermont is cupped in wooded hills . . . almost hidden except for glimpses of the gold-domed State House glinting through the trees. The Doric building, made of native stone, dominates the unusual city and has somewhat the symbolic character of Edinburgh Castle in Scotland.

**Waterbury . . .** This fine old New England town stretches along an intervale made by the Winooski River, situated among the highest elevations of the main Green Mountain Range. The mile-long main street has its small "village green" and hospitable Waterbury Inn, notable among Vermont hostelries since Civil War days.

**Stowe-Mt. Mansfield . . .** No motor trip through Vermont would be complete without a visit to this year-round vacation spot. The Mansfield Lift, world's longest, highest chair lift (1¼ miles in length) carries skiers in winter, and sightseers in summer to the top of Mt. Mansfield with its inspiring views. Far down in the valley lies the picturesque village of Stowe, with its gleaming white church steeple, a scene that is typical of the Vermont landscape.



**LAKE CHAMPLAIN . . .** First explored by the great Frenchman whose name it proudly bears, became the disputed water gateway between French Canada and the British Colonies. Here the first important naval battle of the Revolution — and a decisive naval engagement during the War of 1912 — were fought.

Once a formidable barrier between New England and the great Adirondack area to the West — today it forms a delightful link between these two great vacationlands. Lake Champlain, and the countryside round about, are today the rendezvous of those in search of romance and recreation — summer fun and the pursuit of a healthful outdoor life amid scenes of unmatched beauty.

**Port Kent . . .** If your choice of Pilgrim Tours brings you to Port Kent, you will find it not only a center of summer sports — but an ideal “jumping-off place” for numerous side trips that have both historic and scenic interest.

**Forts Ticonderoga and Crown Point . . .** The whole Lake Champlain area was wrested from the Iroquois Indians by the French, with the help of the Algonquin and Huron Tribes. A chain of forts including Crown Point — and Fort Ticonderoga, most formidable and impregnable fortress in Colonial America — were built by the French to protect their conquests. First test of strength came in 1758 when four thousand Frenchmen under Montcalm repulsed an assault by sixteen thousand British troops. A year later the British took Forts Crown Point and Ticonderoga — only to lose them to Ethan Allen and his famous Green Mountain Boys in 1775.

Your Pilgrim Tour follows the course of history over the famous Poke-O-Moonshine Trail, past Auger Lake and Butternut Pond — then for 50 miles along the picturesque shores of Lake Champlain visiting Crown Point . . . and Fort Ticonderoga, which has been restored and now houses a Colonial and Revolutionary War Museum.

**Ausable Chasm . . .** Another popular trip is that to Ausable Chasm, an amazing natural phenomenon — a chasm channeled

through solid sandstone formation in pre-historic ages by some mysterious and resistless elemental force that still baffles geologists. Considered one of the most impressive scenic wonders of the American continent, the tortuous gorge is approximately one and a half miles long, of abysmal depth and varying widths. From its entrance near beautiful Rainbow Falls, to its exit downstream, Ausable Chasm presents a succession of scenic marvels which can now be viewed safely by means of a stone stairway carved out of the solid rock and a succession of stairways and steel bridges that allows you to view the gorge from every vantage point. The walk ends at Table Rock. From this point to its end, the trip is fittingly climaxed by a thrilling boat ride through the long Grand Flume. The depth of the Ausable River here runs to 60 feet and the walls of the chasm, but 20 feet apart, rise in perpendicular majesty to almost unbelievable heights.

**Mohawk and Taconic Trails . . .** The picturesque road from Boston to Greenfield is a perfect introduction to the tour that attracts people from all over the country. From the wide, elm-shaded streets of Greenfield, you enter the famous trails, blazed through mountains by the Mohawk Indians as they traveled between Massachusetts and New York State.

The Trail makes a gradual ascent over the Hoosac Range with breath-taking views of the valleys and towns below. This is a country of winding rivers, old covered bridges and fine houses with the unique flavor of early American days. Dip down again through North Adams and Williamstown, the seat of Williams College — before the big climb over the Taconic Trail to the very top of the Taconic Mountain Range for a sight you will never forget! Spread out before you is the magnificent panorama of New York State, clusters of tiny towns, lakes and rivers — a picture for your camera and a story you'll repeat again and again when the trip is over.

**The Adirondacks and Lake Placid** The trip from Lake Champlain to Lake Placid takes you through towering, forest clad mountains that rise on every side . . . through Keene, located deep in mountain-



ous wilderness and surrounded by the highest peaks in the Adirondacks, some rising over 5,000 feet into the clouds.

Lake Placid and Mirror Lake live up to their names, for in their placid waters are mirrored the full majesty of the mountains that rise precipitately from their shores. High points on your tour are a 16-mile speedboat trip around Lake Placid . . . a motor trip around Mirror Lake, viewing beautiful Rainbow Falls and Whiteface Mountain . . . a visit to the spot where "John Brown's body lies a-moulding in the grave" . . . and to the site of the famous Olympic Bobsled Run and the exciting Championship Ski Jump.

**Niagara Falls . . .** One of the world's greatest spectacles — the falls at Niagara where a panorama of awe-inspiring splendor unfolds before your eyes.

Through beautiful Queen Victoria Park a shoreline drive provides you with a continuous view of all Niagara. At Table Rock you stand at the crest of Canadian Horseshoe Falls, larger but no less inspiring than the American part of the Falls. The famous Scenic Tunnel under the Falls is located at this point.

You'll want to cross Rainbow Bridge, 222 feet above the water, with its perfect, unobstructed view of both cataracts. Too, you'll want to visit Cave of the Winds and ride on the famous "Maid of the Mist" which takes you right up to the roaring, splashing base of the dashing cataract, and perhaps take a ride in the Aerial Cable Car which swings high above the Great Whirlpool across the neck of St. David's Gorge.

**Hudson River Cruise . . .** At Albany you board a famous Day Line Steamer for a daylight cruise down the romantic and historic Hudson. From the day Hendrick Hudson's *Half Moon* sailed up the river in 1609, the region has had an eventful existence. Here white man and red vied for possession; battles of the Revolution raged, a spy was captured and hanged; and Ichabod Crane fled before the Headless Horseman.

From the deck of your ship you can see the Catskills, where Rip Van Winkle is said to have slept for twenty years.

Your cruise continues past Kingston Point and Poughkeepsie, along the shores of Mount Beacon, and on past the castle-like buildings of the United States Military Academy at West Point.

From there on you'll see Storm King, recognized by the highway cut into its granite face 500 feet up from the water's edge . . . Old Bull Hill . . . Sugar Loaf . . . and Bear Mountain. Anthony's Nose is on the left going down the river and on the right in Dunderberg, a tall mountain at whose feet Captain Kidd, it was believed, buried his treasure.

On past Peekskill you'll come to Stony Point with its lighthouse marking the heights scaled by "Mad Anthony Wayne".

Then the Palisades — great vertical rocks 500 feet in height, stretching along the western shore for fifteen miles.

And finally you see New York's magnificent skyline, as your steamer noses into its Hudson River Pier.

## EASTERN CANADA

**MONTREAL . . .** is a city of curious contrasts . . . a city of beautiful monuments and cathedrals, spacious parks and beautiful drives, all within a stone's throw of an old world countryside where the customs and accent of Old Normandy still prevail. You'll find that Montreal is essentially "French" in its atmosphere, yet thoroughly "new world" in its attainments. Montreal not only writes its signs in French and English, but "thinks" in both languages as well. Stop a person on the street to ask a direction and you are likely to get a pleasant "Oui, M'sieu. Just three blocks to the right! Bon Jour!"

Conducted, lectured motor tours will paint indelibly into your memory the beauty and splendor of one of North America's most unique and beautiful cities. You'll visit the famous church of Notre-Dame de Montreal with its stained glass windows depicting the history of Montreal . . . the "Treasure of Notre-Dame," a museum of priceless religious art treasures, sacred vases, and beautiful gifts from French monarchs of the 17th and 18th centuries. Ad-



joining Notre Dame is the oldest building in use in Montreal today, the Seminary of Saint-Sulpice, built in 1683. You'll take a scenic motor trip circling Mt. Royal, and on the way stop for a visit at famous St. Joseph's Oratory (Brother Andre's Shrine), where you may climb the "90 steps". And you'll stand in awe when you gaze across the St. Lawrence River from Westmount Lookout . . . and see the "Paris of North America" sprawled before you with the dim grey shadows of the Adirondacks far off in the distance. Your tour will take you through the French Quarter and residential Westmount, the city within a city.

**QUEBEC . . .** Your first glimpse of Quebec's grey, moss-grown ramparts whispers: "This is the Past!" Yet the sleek interior luxury of Chateau Frontenac, the city's smart shops and towering skyscrapers are all strictly 20th Century.

If you want relaxation and Old World atmosphere, you'll find it in the twisted, tiny lanes of the Upper City with its medieval, gabled rooftops and secret gardens. You'll walk hand in hand with history, along the grim, watch-towered ramparts of the only walled city in this hemisphere . . . and through the Great Gates in the walls visit Montmorency Falls, higher than Niagara . . . make a Pilgrimage to the revered shrine of Ste. Anne de Beaupre, famed throughout the world as "the Lourdes of America." See lush, green Isle d'Orleans, just over the river, dotted with fairy-tale cottages . . . where time stands still, and the country folk still bake bread outdoors, the farmers plough with oxen, the hum of spinning wheels is still heard.

The Lower City is metropolitan and modern . . . with fine shops offering a wealth of soft English tweeds, polished leather goods, fine English china and other imported luxuries.

Quebec waits, full of memories, eager to give you a living history lesson. But Quebec has its human-interest side, too. The funny little milk carts drawn by dogs down country lanes . . . the misty grey and gold twilight setting in over the St. Lawrence . . . the pious air of country people, kneeling at roadside shrines . . . the splashy colors of hooked rugs, hanging for sale on

every farm fence . . . the clop-clop-clop of the two-wheeler caleches on cobblestoned streets . . . all these give you your own happy store of memories, a new appreciation and friendship for our French-English neighbors to the North.

## GASPE

This land of enchantment, "discovered" only a few years ago, is fast becoming one of the vacation wonderlands of the continent. In a few hours one is transported from the hurly-burly of big cities to a country where people still carry on the customs and traditions of their forebears, four centuries ago! Here, the colorful backgrounds of French, English, Irish and Scotch intermingle. Yet this ancient peninsula offers the tourist the best accommodations modern hotels and inns.

Wherever one looks, there are scenes of breath-taking beauty — riding along the shore of the St. Lawrence . . . the sea-board of the *Baie des Chaleurs* . . . *Matapedia Valley*! The clear sunshine, the life-giving air and glorious blue sky are tonics to the spirit! And everywhere, the happy friendly Gaspé natives make the traveler feel "At home" immediately. The famous fisheries, the outdoor ovens where housewives bake their delicious bread, are unique pictures of the Gaspé way of life.

A high point of the Gaspé tour is the wonderful village of Perce which nestles in the lap of towering *Roche Perce* (The Pierced Rock). It is one of the truly great sights of the world! A visit to *Bonaventure Island* with its multitudes of birds hovering about, and red-roofed farmhouses cozily set in the hillsides, is unforgettable!

## LAURENTIAN MOUNTAINS

**Ste. Marguerite . . .** Domaine d'Estrel is something out of a story book . . . a beautiful, ultra-modern resort, deep in the heart of 7,000 breathtaking acres of untamed wilderness.

Nestled high in Quebec's Laurentian Mountains, on a promontory jutting into Lac Masson, the luxurious Hotel de la



Pointe Bleue is surrounded by sun-swept mountain lakes and primitive forests. Here — at an altitude of 1,225 feet — are all the facilities you could possibly wish, if you enjoy outdoor activities . . . lake bathing, tennis, riding, fishing in deep clear mountain lakes, horseback riding, boating, hiking or mountain climbing . . . you will dance in the evenings in the famous Blue Room. Here, too, if you wish it, is the cool, soothing hand of solitude. "A thousand miles from nowhere", but there is a modern movie house with seating capacity for 1,000 people. Truly, *Domaine d'Esterel* can be counted among the garden spots of all vacationlands.

**Shawbridge . . .** Here, in the heart of the majestic Laurentians, is one of the most charming spots in the Province of Quebec. You'll enjoy your rest at the *Maple Leaf Inn*, with its beautiful golf course nearby and swimming pool, and a vista of mountains all around.

**Saguenay Cruise . . .** Aboard the trim white steamer that takes you from Montreal down the St. Lawrence and up the Saguenay, you leave behind all thoughts of a hurried existence. Lounge in a deck chair or promenade on the wide breeze-swept decks . . . play shuffle board . . . dance to the music of excellent orchestras. The steamer leaves Montreal in the evening, cruising past quaint French riverside farms and villages. Short stops are made the next day at Quebec and at the smart resorts of Murray Bay and Tadoussac, the oldest settlement in Canada. At Tadoussac you'll have time to browse around the historic village where America's first church still stands. Then, just at sunset, up you go all the way to Bagotville, into the mysterious mountain-hemmed black waters of the Saguenay, with echoes of the ship's whistle shouting back at you twenty-fold from wild capes and headlands miles away.

Here you remain on boat overnight. The return trip is made next morning, and this time you see it all again by morning light . . . a majestic scenic thrill climaxed by views of majestic Capes Trinity and Eternity, towering straight up from the water's

edge, 1,800 feet above your cruise ship. Your cruise ends the morning of the third day and you carry ashore delightful memories of a journey into one of the most interesting and thrilling parts of America.

**NOVA SCOTIA . . .** If you love the sea and a perfect climate — have a feeling for historic places — this lovely land of *Evangeline* will satisfy your deepest longings. Here the sea is woven into the texture of the entire peninsula. Along its five thousand miles of coast line there is every variety of salt water bathing . . . in sheltered inlets where the surf is invigorating . . . or on broad sunny beaches of gleaming silver sands. Nova Scotia is truly the birthplace of American civilization; the first white settlement north of the gulf of Mexico was made here in 1605. The French came first, later the English, Irish, Scotch and Hanoverians. Their interesting backgrounds have blended into the fascinating atmosphere which is one of the great charms of this old province. Overnight sail is enjoyed between Boston and Yarmouth, N. S.

**YARMOUTH . . .** where you will stay at the *Lakeside Inn*, is in the center of the *Milo Lakes*, woodlands and the pounding surf. Your eyes and camera will be busy with a thousand beautiful and unusual sights. The Inn provides every modern comfort, good food and entertainment; a short trip to town takes you shopping for antiques, hooked rugs and English woolens. Nearby are golf, tennis and all the water sports.

**HALIFAX . . .** capital of Nova Scotia, was founded in 1749, on the finest harbor of North America. From here, visit *Citadel Hill* — take in the pocket fishing villages of *Purcell's Cove*, *Harring Cove*, *Portugese Cove*, *Ketch Harbor* . . . *Peggy's Cove*, famed for its titanic breakers and little old white Lighthouse.

**DIGBY . . .** perched high over the lovely blue mirror of *Annapolis Basin* and facing *Digby Gap*, this famous Nova Scotia resort is a panorama of sea.



**NEW BRUNSWICK . . .** Pilgrim Tours carry you into this colorful and romantic Canadian Maritime Province, where modern cities and a background of centuries-old tradition offer an interesting study in contrasts.

**SAINT JOHN . . .** where the boat docks, is the largest city of New Brunswick and the site of many historic landmarks. You won't believe your eyes . . . for here you will see waters that rush upwards! Many famous explorers, including Champlain, have described the phenomenon of

Reversing Falls, which, due to the formation of the river bed and harbor tides, rush upwards part of the time, then downwards. This struggle, governed by the tides, takes place twice in every twenty-four hours. Ask the natives to tell you the Indian legend of the origin of the Falls.

Between visits to points of historic interest, vacationists enjoy the bracing, sea-side climate . . . or a drive into the peaceful country-side. The ancient arts of spinning, weaving and rug-making are still practiced in New Brunswick and are a constant temptation to shopping-minded travelers.

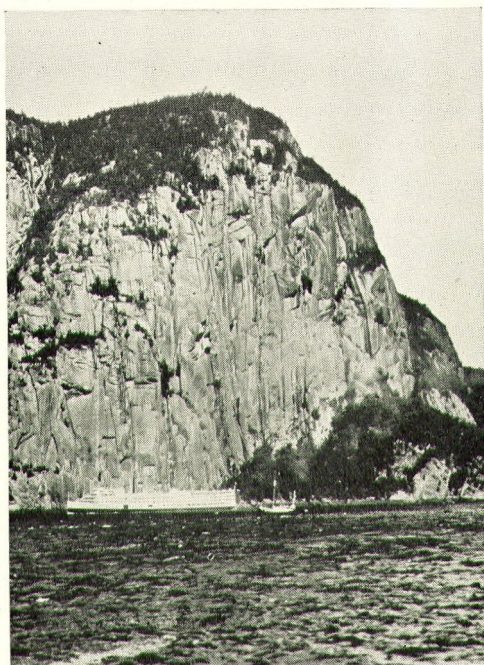




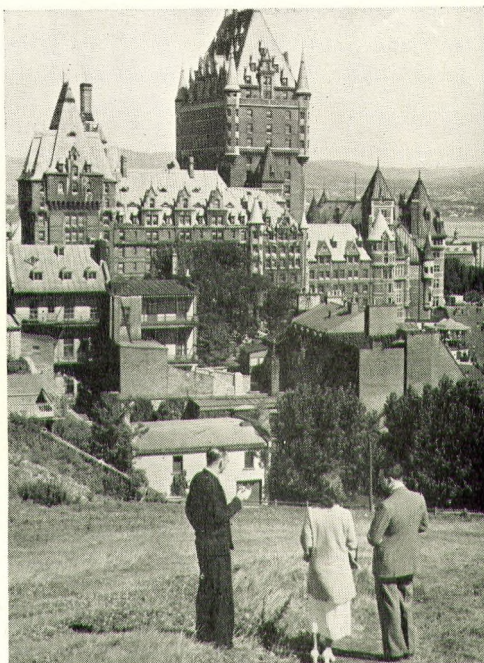
FLUME GORGE, FRANCONIA



GREEN MOUNTAINS



SAGUENAY RIVER



HISTORIC QUEBEC



# ITINERARIES

## for All Expense

# PILGRIM TOURS

---

# 1

## 2 DAYS

**BOSTON . . . NORTH SHORE . . .  
MARBLEHEAD . . . BROOKLINE . . .  
CAMBRIDGE . . . LEXINGTON . . .  
CONCORD**

*Daily—July 1 to Sept. 30*

**1st DAY**—Leave Grand Central Terminal 10:00 A.M. train. Luncheon served on train. Due Boston afternoon, staying at Bellevue or Parker House (room with bath). Includes 4-hour motor coach tour of North Shore to visit Salem, where you will see the House of Seven Gables, Pioneer's Village, and many other historic landmarks. Highlight of the tour is the quaint seaport village of Marblehead where a famous shore dinner is served.

**2nd DAY**—Sightseeing Tour of Back Bay, Brookline, Cambridge, Lexington, and Concord. Leave Boston early evening. Dinner served on train. Due New York 11:00 P.M.

*Single accommodations available*

# 2

## 2 DAYS

**BOSTON . . . BROOKLINE . . . CAM-  
BRIDGE . . . LEXINGTON . . . CON-  
CORD . . . WAYSIDE INN**

*Daily—May 29 to Sept. 30*

**1st DAY**—Leave Grand Central Terminal 10:00 A.M. train. Luncheon served on train. Due Boston afternoon, staying at Bellevue or Parker House (room with bath). **2nd DAY**—

All-day conducted motor coach tour of Boston's historic landmarks including Paul Revere's House, Bunker Hill, the Navy Yard, Brookline, Cambridge, Lexington and Concord. A stop is made for luncheon at Henry Ford's famous Wayside Inn. Leave Boston early evening. Dinner served on train. Due New York 11:00 P.M.

*Single accommodations available*

# 3

## 2 DAYS

**BOSTON . . . PILGRIM SOUTH  
SHORE . . . HISTORIC PLYMOUTH  
. . . CAPE COD CANAL**

*Tuesdays, Thursdays, Saturdays and Sundays  
—May 29 to Sept. 30*

**1st DAY**—Leave Grand Central Terminal 10:00 A.M. train. Luncheon served on train. Due Boston early afternoon. Room with bath at either the Bellevue or Parker House.

**2nd DAY**—All day conducted motor coach tour through the historic towns along the South Shore to Plymouth, landing place of the Pilgrims. Follow the shore to Sagamore traversing the entire eight miles of Cape Cod Canal; returning to Boston over an entirely different route, through the "Cranberry Country." Leave Boston early evening. Dinner served on the train. Due New York 12:00 Midnight.

*Single accommodations available*

# 4

## 3 DAYS

**FALMOUTH HEIGHTS . . . CAPE  
COD**

*Daily—June 22 to Aug. 31*

**1st DAY**—Leave Grand Central Terminal 9:20 A.M. train. Luncheon served on train. Due Falmouth in afternoon, staying at Terrace Gables Hotel (room without bath) on beautiful Martha's Vineyard Sound. **2nd**

**and 3rd DAY**—Visit Falmouth and its fascinating shops, enjoy the hotel's private beach or play golf, tennis, go boating or cycling. Never a dull moment. Leave Falmouth early evening. Dinner served on the train. Due New York late same night.

*(Daylight Saving Time)*



**5****3 DAYS****GREENFIELD . . . MOHAWK AND  
TACONIC TRAILS . . . ALBANY  
. . . HUDSON RIVER***Daily—June 19 to Sept. 12*

**1st DAY**—Leave Grand Central Terminal 12:30 P.M. train for the beautiful old New England town of Greenfield, staying at Weldon Hotel (room with bath). **2nd DAY**—By regular motor coach through a picturesque countryside, passing many fine old houses, covered bridges and waterfalls. Finally, over the famous Mohawk Trail blazed through the mountains by the Mohawk Indians . . . and the Taconic Trail . . . to Albany, Capital of New York State. Here you stay at the Wellington Hotel (room with bath). **3rd DAY**—Return by Hudson River Boat past the Catskill Mountains, Kingston Point, Mt. Beacon, West Point, Storm King and Bear Mountain. You pass the Palisades and have a magnificent view of New York's skyline. Due New York 6:15 P.M.

*Single accommodations available***6****3 DAYS****NANTUCKET ISLAND***Daily except Sundays and Holidays—June 27  
to Sept. 5*

**1st DAY**—Leave Grand Central Terminal 9:20 A.M. train. Luncheon served on train. Board connecting steamer at Woods Hole. Arrive Nantucket early evening, staying at Ocean House (room without bath). **2nd and 3rd DAY**—You are free to see old Nantucket and visit the fascinating shops. Surf-bathing, sun-tanning, golf, tennis, cycling and boating are favorite summer sports on this enchanting island. Board steamer for Woods Hole in afternoon, where train connection is made. Dinner served en route. Due New York late same night.

**7****3 DAYS****BOSTON . . . NORTH SHORE . . .  
MARBLEHEAD . . . SALEM . . .  
GLOUCESTER . . . ROCKPORT  
. . . LEXINGTON . . . CONCORD  
. . . WAYSIDE INN***Mondays, Wednesdays and Fridays—May 30  
to Sept. 29*

**1st DAY**—Leave Grand Central Terminal 10:00 A.M. train. Luncheon on train. Due

**22***(Daylight Saving Time)*

Boston afternoon, staying at Bellevue or Parker House (room with bath). **2nd DAY**—All-day conducted tour along the ocean beaches of the North Shore to Swampscott where you follow the rockbound coast to Marblehead, a fascinating little seaside village, with a harbor that is alive with sailing craft; thence to historic Salem for luncheon and more sightseeing through picturesque Gloucester and Rockport. **3rd DAY**—Another all day conducted motor coach tour taking in Old North Church, Paul Revere's House, Faneuil Hall, old and new State Houses. Then Charlestown, for Bunker Hill and the Navy Yard. No landmark of importance is neglected on this tour. You follow the route of Paul Revere to Lexington and Concord and on to Henry Ford's famous Wayside Inn for luncheon. Leave Boston early evening. Dinner on train. Due New York 11:00 P.M.

*Single accommodations available***8****4 DAYS****BOSTON . . . NEW HAMPSHIRE  
LAKES . . . WHITE MOUNTAINS  
. . . FRANCONIA NOTCH . . . CAN-  
NON MT. BY AERIAL TRAMWAY  
. . . MAINE COAST***Daily—June 20 to Oct. 10*

**1st DAY**—Leave Grand Central Terminal 10:00 A.M. train. Luncheon served on train. Due Boston early afternoon, staying at either the Bellevue or Parker House (room with bath). **2nd DAY**—Motor coach tour to the White Mountains, passing through Concord—the beautiful Lakes Region of New Hampshire—Franconia Notch and Flume Reservation, with short stop to view Old Man of the Mountain. Stop overnight in Littleton at Lee's Hotel or Twin Mountain House at Twin Mountain (room without bath). **3rd DAY**—Continue motor coach tour, stopping for ascent to top of Cannon Mountain by Aerial Tramway. Then on through Bretton Woods—Crawford Notch, Intervale and North Conway to Portland, Maine, stopping overnight at Eastland Hotel (room with bath). **4th DAY**—Boat trip around Casco Bay with its picturesque islands. Then by motor coach through the famous beach resorts of Maine and New Hampshire to Boston. Leave in early evening for New York. Dinner served on train. Due New York 12:00 midnight.

*Single accommodations available*



# 9

## 4 DAYS

**BOSTON . . . NEW HAMPSHIRE  
LAKES . . . WHITE MOUNTAINS  
. . . FRANCONIA NOTCH . . . MT.  
WASHINGTON . . . COAST OF  
MAINE AND NEW HAMPSHIRE**

*Sundays, Wednesdays and Fridays—June 15  
to Oct. 3*

**1st DAY**—Leave Grand Central Terminal at 10:00 A.M. Luncheon served on train. Due Boston afternoon, staying at Bellevue or Parker House (room with bath). **2nd DAY**—Depart on three-day conducted motor coach tour to the White Mountains, through the beautiful Lakes Region of New Hampshire to North Woodstock, staying at Alpine Hotel (room without bath). **3rd DAY**—Visit the scenic Flume Reservation and famous Old Man of the Mountain. Included is a trip by rail up to the very top of Mount Washington; returning to Alpine Hotel. **4th DAY**—Continue motor tour through Bretton Woods, Crawford Notch, and the tiny mountain villages of Intervale and North Conway—to Maine, stopping at the famous Poland Spring House for luncheon. Continuing on through the famous beach resorts of Maine and New Hampshire to Boston. Leave early evening. Dinner served on train. Due New York 11:00 P.M.

*Single accommodations available*

conducted, lectured sightseeing tour of Lexington and Concord, stopping for luncheon at Henry Ford's famous Wayside Inn. Return to Boston for connecting train to New York. Due New York 11:00 P.M. same day.

*Single accommodations available*

# 11

## 4 DAYS

**BOSTON . . . NORTH SHORE . . .  
EVENING TOUR TO SALEM AND  
MARBLEHEAD . . . FALMOUTH  
HEIGHTS . . . CAPE COD . . .  
MARTHA'S VINEYARD ISLAND**

*Daily except Saturdays—July 1 to Aug. 29*

**1st DAY**—Leave Grand Central Terminal 10:00 A.M. train. Luncheon on train. Due Boston early afternoon, staying at the Bellevue or Parker House (room with bath). 4-hour conducted motor coach tour of the North Shore to historic Salem. Stop at Marblehead for a famous shore dinner. **2nd DAY**—Conducted tour of Historic and Modern Boston. Leave Boston early afternoon by train for Falmouth Heights on old Cape Cod, staying at Terrace Gables Hotel (room without bath). **3rd DAY**—A morning sail over to Martha's Vineyard Island with conducted sightseeing trip included. **4th DAY**—Leave Falmouth Heights in morning. Luncheon served on train. Due New York afternoon.

# 10

## 4 DAYS

**BOSTON . . . CRAWFORD NOTCH  
. . . FRANCONIA NOTCH . . . LAKE  
WINNIPESAUKEE . . . NEW HAMP-  
SHIRE . . . WHITE MOUNTAINS  
. . . LEXINGTON AND CONCORD  
. . . WAYSIDE INN**

*Daily—June 19 to Oct. 11*

**1st DAY**—Leave Grand Central Terminal on 10:00 A.M. train for Boston for over-night stay at Bellevue or Parker House (room with bath). **2nd DAY**—Depart by train for Littleton, New Hampshire in the White Mountains passing through Crawford Notch, eastern portal to the White Mountains. Overnight stop in Littleton at Lee's Hotel (room without bath). **3rd DAY**—Return to Boston via Franconia Notch, Echo Lake, Old Man of the Mountain at Profile Lake. Overnight stop at Boston, staying at Bellevue or Parker House (room with bath). **4th DAY**—All day

# 12

## 4 DAYS

**NEW BEDFORD . . . MARTHA'S  
VINEYARD ISLAND . . . FAL-  
MOUTH HEIGHTS . . . CAPE COD**

*Daily—June 27 to Aug. 30*

**1st DAY**—Leave Grand Central Terminal 10:00 A.M. train. Luncheon served on train. Due New Bedford afternoon, staying at the New Bedford Hotel (room with bath). **2nd DAY**—Two hour steamer trip across beautiful Vineyard Sound to Martha's Vineyard. Luncheon and a complete guided tour of Martha's Vineyard Island. Leave on late afternoon steamer for Woods Hole, where connection is made for Falmouth Heights on Cape Cod. Here you stay at Terrace Gables Hotel (room without bath). **3rd DAY**—Golf, tennis, or bathing on the hotel's private beach. **4th DAY**—Leave Falmouth in morning. Luncheon is served on train. Due New York in afternoon.

*(Daylight Standard Time)*



# 14

## 4 DAYS

### BOSTON . . . MAINE . . . COAST AND LAKES . . . WHITE MOUNTAINS . . . NEW HAMPSHIRE . . . LAKES REGION

*Daily—June 19 to Oct. 10*

**1st DAY**—Leave Grand Central Terminal 10:00 A.M. train. Luncheon served on train. Due Boston early afternoon, staying at the Hotel Bellevue or Parker House (room with bath). **2nd DAY**—Motor coach trip to Portland, Maine, stopping at Eastland Hotel (room with bath). Two-hour sail on beautiful Casco Bay with its 365 picturesque islands. **3rd DAY**—Motor coach trip through the Lakes Region of Maine and White Mountains to North Conway, Intervale, Glen, Crawford Notch and Bretton Woods. Stop overnight at Twin Mountain House\* (room without bath). **4th DAY**—Scenic motor coach trip through the White Mountains and New Hampshire Lakes Region—then along the Merrimack River Valley to Boston. Leave early evening by train. Dinner served on train. Due New York 11:00 P.M.

\*After September 4 stop at Hotel Lee, Littleton

*Limited single accommodations available*

# 15

## 4 DAYS

### BOSTON . . . WHITE MOUNTAINS . . . FRANCONIA NOTCH . . . CRAWFORD NOTCH . . . AERIAL TRAMWAY

*Daily—June 19 to Oct. 11*

**1st DAY**—Leave Grand Central Terminal 10:00 A.M. train. Luncheon served on train. Due Boston afternoon, staying at Bellevue or Parker House (room with bath). **2nd DAY**—Motor coach trip to Littleton, New Hampshire in the White Mountains passing through the picturesque Merrimack River Valley to Concord, capital of New Hampshire. Then through the beautiful Lake Region of New Hampshire stopping for luncheon at The Weirs on the shore of Lake Winnepesaukee. Passing through Franconia Notch you will see Profile Lake and Old Man of the Mountain. Overnight stop at Lee's Hotel, Littleton (room without bath). **3rd DAY**—Trip including the thrilling ascent to the summit of Cannon Mountain on the Aerial Tramway. Board train for return trip to Boston. Overnight stay at Bellevue or Parker House (room with bath). **4th DAY**—Leave Boston in morning.

Luncheon served on train. Due New York afternoon.

*Limited single accommodations available*

# 16

## 5 DAYS

### NANTUCKET ISLAND . . .

*Daily except Sundays and Holidays—June 23 to Sept. 5*

**1st DAY**—Leave Grand Central Terminal 9:20 A.M. train. Luncheon served on train. Due Woods Hole in afternoon, where you board steamer for bracing ocean cruise to Nantucket Island, staying at the Ocean House (room without bath). **2nd to 4th DAYS**—Free to do as you please on this enchanting island where the flavor of old New England of seafaring days has been preserved for your pleasure. Swim, cycle, play golf and tennis or just relax. **5th DAY**—Leave on afternoon steamer for Woods Hole, where train connections are made. Dinner served enroute. Due New York late same night.

# 17

## 5 DAYS

### CAPE COD . . . FALMOUTH HEIGHTS . . . BOSTON . . . SALEM . . . MARBLEHEAD . . . MOHAWK and TACONIC TRAILS . . . ALBANY . . . HUDSON RIVER

*Daily—June 29 to Aug. 31*

**1st DAY**—Leave Grand Central Terminal at 9:20 A.M. Luncheon served on train. Due Falmouth Heights in early afternoon, staying at Terrace Gables Hotel (room without bath). Hotel is directly on Vineyard Sound. **2nd DAY**—Enjoy summer sports including bathing at hotel's private beach. **3rd DAY**—Leave by train for Boston, staying at Bellevue or Parker House (room with bath). In late afternoon, a conducted, lectured evening tour is taken to the North Shore, including historic Salem and picturesque Marblehead where you stop for a real New England shore dinner. **4th DAY**—Motor coach trip to Albany, following a picturesque route over the Mohawk Trail, one of the most beautiful drives in the East. Then over the Taconic Mountain Range into New York State, arriving Albany in late afternoon. Overnight stop at Wellington Hotel (room with bath). **5th DAY**—All day steamer cruise down the Hudson, viewing the Catskills, Storm King, Bear Mountain, the Palisades and New York skyline. Breakfast and luncheon aboard steamer. Arrive New York 6:15 P.M.



# 18

## 5 DAYS

**FALMOUTH HEIGHTS . . . CAPE COD . . . SALEM . . . MARBLEHEAD . . . HISTORIC BOSTON . . . LEXINGTON . . . CONCORD . . . WAYSIDE INN**

*Daily—June 28 to Aug. 31*

**1st DAY**—Leave Grand Central Terminal 9:20 A.M. train. Luncheon is served on train. Due Falmouth Heights, Cape Cod, in early afternoon, staying at the Terrace Gables Hotel. (room without bath). **2nd and 3rd DAYS**—Two full free days to do as you please. Swim and bathe to your heart's content at the hotel's private beach. **4th DAY**—Leave by train for Boston, stopping at the Bellevue or Parker House (room with bath). In the late afternoon, conducted, lectured motor tour to historic Salem and colorful Marblehead where you stop for a shore dinner. **5th DAY**—All day conducted, lectured motor coach tour of Boston's old landmarks. Continuing through Back Bay, Brookline and Cambridge to Lexington and Concord. Luncheon at Henry Ford's Wayside Inn. Leave Boston early evening. Dinner served on train. Due New York 11:00 P.M.

# 19

## 6 DAYS

**BOSTON . . . LEXINGTON . . . CONCORD . . . WAYSIDE INN . . . PROVINCETOWN ON CAPE COD**

*Daily—June 12 to Sept. 10*

**1st DAY**—Leave Grand Central Terminal 10:00 A.M. train. Luncheon served on train. Due Boston early afternoon, staying at the Bellevue or Parker House (room with bath). **2nd DAY**—Conducted motor tour of historic and modern Boston—Back Bay—wealthy Brookline, Cambridge, Lexington and Concord. Luncheon is served at Henry Ford's famous Wayside Inn. **3rd to 5th DAYS**—Leave Boston on early morning train for Provincetown on Old Cape Cod, staying at Gifford House (room without bath). Here you are on your own to enjoy the sun and sea—and the "atmosphere," that makes Provincetown so attractive to summer visitors. **6th DAY**—Leave Provincetown early morning. Luncheon served on train. Due New York in afternoon.

*Limited single accommodations available*

*(Daylight Saving Time)*

# 20

## 6 DAYS

**NEW BEDFORD . . . MARTHA'S VINEYARD ISLAND . . . NANTUCKET ISLAND . . . CAPE COD . . . FALMOUTH HEIGHTS**

*Daily except Saturday and July 3.  
June 27 to Aug. 29*

**1st DAY**—Leave Grand Central Terminal 10:00 A.M. train. Luncheon served on train. Arrive early afternoon at New Bedford, stopping overnight at New Bedford Hotel (room with bath). **2nd DAY**—Two hour cruise to Martha's Vineyard Island for luncheon and a complete conducted motor tour of the Island. In the afternoon, continue by steamer to Nantucket, staying at the Ocean House (room without bath). **3rd DAY**—Free for bathing or sightseeing on this enchanted island that has preserved the seafaring traditions of old New England. **4th DAY**—Board afternoon steamer for Cape Cod, and Falmouth Heights where you stay at the Terrace Gables (room without bath), a hotel overlooking Martha's Vineyard Sound. **5th DAY**—Free for swimming or sun-tanning at hotel's private beach. **6th DAY**—Leave Falmouth in morning. Luncheon served on train. Due New York in afternoon.

# 21

## 7 DAYS

**MONTREAL . . . QUEBEC CITY**

*Daily except Sunday—May 1 to Dec. 31*

**1st DAY**—Leave Grand Central Terminal 9:10 A.M. Luncheon and dinner served on train. Due Montreal late evening, staying at Berkeley Hotel (room with bath). **2nd DAY**—Leave Montreal in morning for Quebec. Luncheon served on train. Staying at Chateau Frontenac or Clarendon Hotel (room with bath). **3rd to 5th DAYS**—Free to explore this old French Colonial city's historic landmarks and fascinating shops. **5th DAY**—Leave in afternoon for Montreal, stopping overnight at Berkeley Hotel (room with bath). **6th DAY**—Conducted sightseeing tour of historic and modern Montreal. **7th DAY**—Leave Montreal in morning. Luncheon and dinner served on train. Due New York 10:05 P.M.



## 22

### 7 DAYS

#### FALMOUTH HEIGHTS . . . MARTHA'S VINEYARD ISLAND . . . BOSTON . . . PORTLAND, MAINE COAST . . . WHITE MOUNTAINS

*Daily—June 23 to Aug. 30*

**1st DAY**—Leave Grand Central Terminal 9:20 A.M. train. Luncheon is served on train. Arrive at Falmouth Heights, Cape Cod, staying at Terrace Gables Hotel (room without bath). **2nd DAY**—Free for swimming, boating, cycling. **3rd DAY**—A day's outing has been arranged to Martha's Vineyard Island including conducted tour of the Island. **4th DAY**—In the morning, train connections are made for Boston, stopping at the Bellevue Hotel or Parker House (room with bath). **5th DAY**—Leave in morning by motor coach for Portland, Maine, stopping at the Eastland Hotel (room with bath). A cruise has been arranged around picturesque Casco Bay with its 365 islands. **6th DAY**—Motor coach trip through the Maine Lakes Region and the White Mountains to North Conway, Intervale, Glen, Crawford Notch and Bretton Woods. Overnight stop at the Twin Mountain House in the heart of the White Mountains (room without bath). **7th DAY**—Scenic motor coach trip through Franconia Notch—past the Old Man of the Mountain—Echo and Profile Lakes—continuing down through North Woodstock and Plymouth, N. H. You will stop for lunch at The Weirs on the shores of beautiful Lake Winnepesaukee. Then through Concord—picturesque Merrimack River Valley to Boston. Leave in early evening. Dinner served on train. Due New York 11:00 P.M.

## 23

### 7 DAYS

#### PROVINCETOWN . . . FALMOUTH HEIGHTS . . . MARTHA'S VINE- YARD ISLAND

*Daily—June 23 to Aug. 27*

**1st DAY**—Leave Grand Central Terminal 9:20 A.M. Luncheon served on train. Due Yarmouth on Cape Cod in time for connecting motor coach to Provincetown, where you stop at the Gifford House (room without bath). **2nd and 3rd DAYS**—At Provincetown, where you can swim, sun bathe, or go sightseeing in this picturesque seaport and artist colony. After luncheon on third day, leave for Falmouth Heights on Cape Cod where you

will stay at the Terrace Gables Hotel (room without bath). **4th through 6th DAYS**—Free for swimming at the Terrace Gables private beach. On the sixth day a boat trip has been arranged to Martha's Vineyard, including luncheon and a complete sightseeing trip of the Island. **7th DAY**—Leave Falmouth in morning, luncheon served on train. Due New York early afternoon.

## 24

### 7 DAYS

#### NANTUCKET ISLAND . . . BOSTON LEXINGTON . . . CONCORD . . . WAYSIDE INN . . . PILGRIM SOUTH SHORE . . . HISTORIC PLYMOUTH

*Daily except Sunday and Wednesday—June 27 to Aug. 27 (except June 30)*

**1st DAY**—Leave Grand Central Terminal at 9:20 A.M. Luncheon served on train. Due Woods Hole on old Cape Cod early afternoon. Board steamer for cruise to Nantucket, staying at the Ocean House (room without bath). **2nd through 4th DAYS**—Free for swimming, sun-tanning, or sightseeing. **5th DAY**—Leave Nantucket by steamer for Woods Hole, connecting with train for Boston, stopping at the Bellevue or Parker House (room with bath). **6th DAY**—All-day conducted motor coach tour of historic and modern Boston—Brookline, Cambridge, Lexington and Concord. Luncheon at Henry Ford's famous Wayside Inn. **7th DAY**—All day conducted motor coach tour of the Pilgrim South Shore—passing through Marshfield, Duxbury, and Pilgrim Plymouth with its famous Plymouth Rock. Return to Boston in time to board train for New York. Dinner served on train. Due New York 12:00 midnight.

## 25

### 7 DAYS

#### BOSTON . . . MAINE COAST . . . WHITE MOUNTAINS . . . AERIAL TRAMWAY . . . GREEN MOUN- TAINS . . . LAKE CHAMPLAIN . . . AUSABLE CHASM

*Daily—June 19 to Oct. 1*

**1st DAY**—Leave Grand Central Terminal at 10:00 A.M. Luncheon served on train. Arrive Boston afternoon, staying at the Bellevue or Parker House (room with bath). **2nd DAY**—Leave by motor coach for Portland, Maine, stopping overnight at the Eastland Hotel



(room with bath). Two hour sail around Casco Bay with its 365 picturesque islands. **3rd DAY**—Motor coach trip through Lakes Region of Maine and the White Mountain resorts of Conway, Intervale and Glen. Then through Crawford Notch, stopping overnight at the Twin Mountain House\* (room without bath) in the heart of the White Mountains. **4th DAY**—Morning sightseeing trip to summit of Cannon Mountain by Aerial Tramway is included. **5th DAY**—Leave in afternoon for motor tour through the White Mountains to St. Johnsbury, and gateway to the Green Mountains of Vermont, continuing through Montpelier, capital of Vermont to Lake Champlain, stopping in Burlington at the Hotel Vermont (room with bath). **6th DAY**—Sail across Lake Champlain to Port Kent—and a spectacular boat ride through Ausable Chasm. **7th DAY**—Leave Burlington 11:30 A.M. Luncheon and dinner on train. Due New York 10:05 P.M.

\*After September 4 stop at Hotel Lee, Littleton

bath) where overnight stop is made. **7th DAY**—Continue motor coach trip through Franconia Notch, North Woodstock and Plymouth. Stop for lunch at The Weirs on the shores of Lake Winnepesaukee. Then down through the picturesque Merrimack River Valley to Boston. Leave at 6:00 P.M. Dinner served on train. Due New York 11:00 P.M.

## 27

7 DAYS

**NEW BEDFORD . . . MARTHA'S VINEYARD ISLAND . . . NANTUCKET ISLAND . . . HISTORIC BOSTON and CAMBRIDGE . . . LEXINGTON . . . CONCORD . . . WAYSIDE INN**

*Daily except Saturday—June 27 to Aug. 31*

**1st DAY**—Leave Grand Central Terminal at 10:00 A.M. Luncheon served on train. Arrive New Bedford in early afternoon, stopping overnight at the New Bedford Hotel (room with bath). **2nd DAY**—Leave by steamer for Martha's Vineyard for complete conducted tour of the Island. Late afternoon cruise to Nantucket, staying at the Ocean House (room without bath). **3rd, 4th and 5th DAYS**—Do just as you please—golfing, playing tennis, swimming, cycling, or just plain relaxing. **6th DAY**—Leave Nantucket by early afternoon boat for Woods Hole where train connection is made for Boston, stopping at the Bellevue Hotel or Parker House (room with bath). **7th DAY**—All day conducted motor coach tour of ancient and modern Boston, Brookline, Cambridge, Lexington and Concord—and on to Henry Ford's Wayside Inn for luncheon. Leave Boston at 6:00 P.M. Dinner served on train. Due New York 11:00 P.M.

## 26

7 DAYS

**NEW BEDFORD . . . MARTHA'S VINEYARD ISLAND . . . NANTUCKET ISLAND . . . BOSTON . . . PORTLAND . . . MAINE LAKES . . . WHITE MOUNTAINS . . . NEW HAMPSHIRE LAKES**

*Daily except Saturday—June 23 to Aug. 31*

**1st DAY**—Leave Grand Central Terminal at 10:00 A.M. Luncheon served on train. Arrive New Bedford early afternoon, stopping overnight at New Bedford Hotel (room with bath). **2nd DAY**—Board steamer for cruise to Martha's Vineyard Island where a complete conducted tour of the Island is included. Leave on late afternoon steamer for Nantucket, staying at the Ocean House (room without bath). **3rd DAY**—Free for swimming, sun-bathing or sightseeing. **4th DAY**—Board steamer in early afternoon for Woods Hole, where train connection is made to Boston, stopping at the Bellevue or Parker House (room with bath). **5th DAY**—Leave by motor coach for Portland, arriving in early afternoon, stopping at the Eastland Hotel (room with bath). Two hour sightseeing cruise around Casco Bay with its 365 islands included. **6th DAY**—Motor coach trip through the Maine Lakes Region, into the White Mountains. Passing through Crawford Notch and Bretton Woods, you arrive at Twin Mountain House (room without

## 28

7 DAYS

**CAPE COD . . . FALMOUTH HEIGHTS . . . MARTHA'S VINEYARD ISLAND**

*Daily—June 23 to Aug. 27*

**1st DAY**—Leave Grand Central Terminal at 9:20 A.M. Luncheon on train. Arrive Falmouth Heights in afternoon, stopping at the popular Terrace Gables Hotel, situated on the beautiful shore drive overlooking Martha's Vineyard Sound. Here a room without bath has been reserved. **2nd to 7th DAYS**—Care-free, pleasure-full vacation days at the Terrace Gables Hotel. Full facilities for beach sports,



boating, golfing, tennis, and bathing at the hotel's private beach. On the **6th DAY** a day's outing has been arranged by steamer to Martha's Vineyard Island. Luncheon and a complete conducted tour of the Island is included. Leave Falmouth morning of 7th day for New York. Luncheon served on train. Due New York afternoon.

## 29

7 DAYS

**THE BERKSHIRES . . . GREEN MOUNTAINS . . . WHITE MOUNTAINS . . . AERIAL TRAMWAY . . . PORTLAND, MAINE**

*Daily—May 1 to Oct. 30*

**1st DAY**—Leave Grand Central Terminal on 8:08 A.M. train for Pittsfield, Mass., arriving for luncheon and overnight stop at Wendell Sheraton Hotel (room with bath). **2nd DAY**—Leave Pittsfield by motor coach for Montpelier, Vermont (luncheon enroute not included), staying at Montpelier Tavern (room without bath). **3rd DAY**—Continue motor coach tour through the Green Mountains crossing into the White Mountains of New Hampshire. Stop at Lee's Hotel in Littleton or the Twin Mountain House at Twin Mountains (room without bath). **4th and 5th DAYS**—At Littleton or Twin Mountains for sightseeing, outdoor sports, or just relaxing. Trip to Cannon Mountain with ride on the Aerial Tramway included. **6th DAY**—Leave by motor coach for Portland in the afternoon, arriving for dinner and overnight stay at the Eastland Hotel (room with bath). **7th DAY**—Two hour sail around picturesque Casco Bay has been arranged. Leave by motor coach for Boston where train connections are made for New York. Dinner served on train. Arrive New York 12:00 midnight.

*Single accommodations available*

## 30

8 DAYS

**LAKE SUNAPEE, NEW HAMPSHIRE**

*Daily except Sunday—June 28 to Aug. 29*

**1st DAY**—Leave Grand Central Terminal at 9:40 A.M. Luncheon served on train. Arrive in afternoon at Lake Sunapee, staying at the beautiful Granliden Hotel (room without bath). **2nd to 8th DAYS**—Days of freedom at a lake resort that is the perfect spot for a summer vacation. Here you'll enjoy swimming, or a brisk turn in a motor boat, right

in front of your hotel. There are fast courts for tennis, and perfect fairways to test your skill with a brassie. Or, if you prefer, you can rest and relax to your heart's content. **8th DAY**—Leave in morning. Luncheon and dinner served on train. Due New York 7:55 P.M.

## 31

8 DAYS

**TWIN MOUNTAINS, NEW HAMPSHIRE . . . CANNON MOUNTAIN . . . AERIAL TRAMWAY . . . MT. WASHINGTON**

*Daily—June 23 to Sept. 6*

**1st DAY**—Leave Grand Central Terminal at 9:40 A.M. Luncheon served on train. Due Twin Mountains, New Hampshire in early evening, staying at Twin Mountain House (room without bath). **2nd to 7th DAYS**—Remain at hotel, enjoying all outdoor sports, rest and relaxation. Trips to Flume Gorge and Old Man of the Mountain, by Aerial Tramway to summit of Cannon Mountain and to top of Mount Washington (weather permitting)—all included. **8th DAY**—Return to New York. Dinner served on train. Due New York 10:20 P.M.

## 32

8 DAYS

**PORTLAND, MAINE . . . WHITE MOUNTAINS . . . NEW HAMPSHIRE . . . AERIAL TRAMWAY . . . BURLINGTON, VERMONT . . . GREEN MOUNTAINS . . . LAKE CHAMPLAIN . . . AUSABLE CHASM . . . THE BERKSHIRES**

*Daily except Sundays—June 20 to Oct. 6*

**1st DAY**—Leave Grand Central Terminal at 10:00 A.M. for Boston. Luncheon served on train. Train connections at Boston for Portland, Maine, stopping overnight at Eastland Hotel (room with bath). **2nd DAY**—Leave Portland after luncheon for motor coach trip through the White Mountains to Twin Mountains, New Hampshire. Stay at Twin Mountain House\* (room without bath). **3rd DAY**—Trip has been arranged to Cannon Mountain with thrilling ride on Aerial Tramway. **4th DAY**—After luncheon leave by motor coach through the Green Mountains to Burlington, Vermont. Overnight stop at the Hotel Vermont (room with bath). **5th DAY**—Boat trip across Lake Champlain to Ausable Chasm. **6th DAY**—Leave Burling-



ton at 10:00 A.M. by motor coach. A stop is made at Rutland, Vermont for luncheon. Arrive Great Barrington for dinner stopping at Berkshire Inn (room with bath). **7th DAY**—Relax and enjoy the hospitality of this delightful inn. A sightseeing trip through the Southern Berkshires by motor car is included. **8th DAY**—Leave Great Barrington by train. Due New York 6:12 P.M.

\*After September 4 stop at Hotel Lee, Littleton

## 33

### 9 DAYS

**BOSTON . . . MAINE COAST . . .  
BAR HARBOR . . . WHITE MOUNTAINS . . . GREEN MOUNTAINS . . .  
AUSABLE CHASM . . . LAKE CHAMPLAIN . . . ALBANY . . .  
HUDSON RIVER**

*Daily—June 26 to Oct. 1*

**1st DAY**—Leave Grand Central Terminal at 10:00 A.M. for Boston. Luncheon served on train. Overnight stop at Hotel Bellevue or Parker House (room with bath). **2nd DAY**—Leave on motor coach trip along the Maine Coast to Bar Harbor. Here you stop at the Belmont Hotel (room without bath). **3rd DAY**—Two interesting sightseeing trips have been arranged—a two hour automobile trip to the summit of Cadillac Mountain and a two hour sail around Bar Harbor. **4th DAY**—Depart for Portland, via the Inland Route, with stop at Bangor (luncheon not included). Due Portland late afternoon. Overnight stop at Eastland Hotel (room with bath). **5th DAY**—Leave in afternoon for motor coach trip through the White Mountains. Overnight stop is made at Twin Mountain House\* (room without bath). **6th DAY**—Morning trip to Cannon Mountain, with thrilling ride on Aerial Tramway. In mid-afternoon you continue your trip across New Hampshire into the Green Mountains of Vermont, stopping at the Hotel Vermont (room without bath) in Burlington on the shores of Lake Champlain. **7th DAY**—Sail across Lake Champlain for continued trip to Ausable Chasm where you will enjoy a trip through this spectacular natural wonder. **8th DAY**—Leave by motor coach for Albany, New York State capital, where you will stop overnight at Wellington Hotel (room with bath). **9th DAY**—Leave Albany for cruise down the beautiful Hudson River. Breakfast and luncheon served on boat. Due New York 6:15 P.M.

\*After September 4 stop at Hotel Lee, Littleton

## 34

### 9 DAYS

**MONTREAL . . . . LAURENTIAN MOUNTAINS . . . . SAGUENAY CRUISE . . . QUEBEC**

*Daily—May 30 to Sept. 25 (except Sunday and June 12)*

**1st DAY**—Leave Grand Central Terminal at 9:10 A.M. for Montreal. Luncheon and dinner served on train. Overnight stay at the Berkeley Hotel (room with bath). **2nd DAY**—Leave after breakfast for delightful motor trip to Shawbridge in the Laurentian Mountains. Return for Saguenay Cruise. **3rd and 4th DAYS**—Cruising the beautiful St. Lawrence and Saguenay Rivers to Bagotville and return to Quebec City stopping at the Clarendon Hotel (room without bath). **5th and 6th DAYS**—Stop-over in Quebec. **7th DAY**—Leave Quebec City by steamer for return trip to Montreal. **8th DAY**—Arrive Montreal early morning, staying at the Berkeley Hotel (room with bath). Sightseeing tour of historic and modern Montreal included. **9th DAY**—Leave for New York. Luncheon and dinner served on train. Due New York 10:05 P.M.

## 35

### 10 DAYS

**MONTREAL . . . GASPÉ PENINSULA . . . QUEBEC**

*Daily except Sundays—June 23 to Sept. 6*

**1st DAY**—Leave Grand Central Terminal at 9:40 A.M. Luncheon and dinner served on train. Due Montreal late evening, stopping overnight at the Berkeley Hotel (room with bath). **2nd DAY**—Conducted, sightseeing tour of historic and modern Montreal. Depart same evening by sleeper (berth included). Arrive Mont Joli, Quebec early following morning. **3rd to 6th DAYS**—Four day motor trip covering the entire Gaspé Peninsula, stopping overnight at good hotels (rooms without baths). Return to Mont Joli on 6th day for overnight stay at the Commercial Hotel (room with bath). **7th DAY**—Leave by train for Quebec arriving in time for dinner at the Chateau Frontenac or Clarendon Hotel (room with bath). **8th DAY**—Free to do as you wish. **9th DAY**—Depart for Montreal, stopping overnight at the Berkeley Hotel (room with bath). **10th DAY**—Leave Montreal in morning. Luncheon and dinner served on train. Due New York 10:05 P.M.

*(Daylight Saving Time)*



# 36

## 10 DAYS

**MONTREAL . . . QUEBEC . . . ST. LAWRENCE RIVER . . . LAKE ONTARIO . . . TORONTO . . . QUEENSTON . . . NIAGARA FALLS . . . BUFFALO**

*Saturdays, Tuesdays, Thursdays—May 31 to Sept. 23*

**1st DAY**—Leave Grand Central Terminal 9:10 A.M. Luncheon and dinner served on train. Arrive Montreal late evening, stopping at Berkeley Hotel (room with bath). **2nd DAY**—Conducted lectured tour of historic and modern Montreal. Board steamer in evening for sail up the St. Lawrence to Quebec. Dinner served on steamer (berth included). Arrive Quebec early next morning. **3rd, 4th and 5th DAYS**—In Quebec City, stopping at Chateau Frontenac or Clarendon Hotel (room with bath). Your time is your own in Quebec. Evening of fifth day, leave Quebec by steamer (berth included). Dinner served on board. Arrive Montreal early following morning. Breakfast aboard steamer. **6th DAY**—Leave Montreal by train for Prescott, Ontario, where steamer connections are made (berth included) for cruise down St. Lawrence River, through the Lachine Rapids, past the Thousand Islands to Lake Ontario. Due Toronto early next morning. **7th, 8th and 9th DAYS**—After breakfast, the steamer puts off for Queenston, connecting with motor coach for Niagara Falls, Canada, where you stay at the General Brock Hotel (room with bath). With the hotel as headquarters, you have three glorious, memorable vacation days. A conducted tour has been arranged, visiting the principal points of interest on both the Canadian and American sides of Niagara Falls. The remainder of your time in Niagara Falls you are free to do as you please. **10th DAY**—After breakfast leave by motor coach for scenic drive along the Niagara River to Buffalo, where train connections are made for New York. Luncheon and dinner on train. Due New York 8:50 P.M.

# 37

## 10 DAYS

**BOSTON . . . LEXINGTON . . . CONCORD . . . WAYSIDE INN . . . WHITE MOUNTAINS . . . NEW HAMPSHIRE LAKES . . . MT. CHOCORUA . . . CRANMORE MOUNTAIN . . . FRANCONIA NOTCH . . . PORTLAND**

*Daily except Fridays—May 29 to Sept. 28*

**1st DAY**—Leave Grand Central Terminal at 10:00 A.M. Luncheon served on train. Ar-

rive Boston afternoon, staying at the Bellevue or Parker House (room with bath). **2nd DAY**—All day conducted, lectured motor tour of historic and modern Boston, cultural Cambridge, thence to Lexington and Concord, with stop at Henry Ford's famous Wayside Inn for luncheon. **3rd DAY**—Depart for Conway in the beautiful White Mountains of New Hampshire. Here you stop at the Presidential Inn (room without bath). **4th to 10th DAYS**—A glorious full week's vacation having the time of your life relaxing, golfing, swimming and riding. There have been trips planned on different days to Crystal Lake and Mt. Chocorua. A thrilling trip in the Skimobile . . . a mile up Cranmore Mountain. Another trip will take you through Crawford Notch, and Bretton Woods, Franconia Notch and the Flume Gorge, with the famous Old Man of the Mountain. Another thrilling trip by cable car up to the top of Cannon Mountain has been planned. **10th DAY**—Leave Conway in the late afternoon for Portland where train connections are made for New York (berth included). Due New York early morning of the eleventh day.

# 38

## 10 DAYS

**PORTLAND . . . WHITE MOUNTAINS . . . MT. CHOCORUA . . . CRANMORE MOUNTAIN . . . FRANCONIA NOTCH . . . CANNON MOUNTAIN . . . BOSTON**

*Daily except Fridays and Saturdays—May 29 to Nov. 3*

**1st DAY**—Leave Grand Central Terminal at 9:00 P.M. on the "State of Maine Express" (berth included), arriving Portland early morning of second day. **2nd to 10th DAYS**—Leave Portland for Conway Center arriving in time for luncheon at the Presidential Inn where you will stay until the 10th day (room without bath). Here you will enjoy a glorious outdoor vacation in the White Mountains, playing golf and tennis, swimming, canoeing, riding and taking long walks through woodland trails. During your stay here, tours have been arranged on different days. One trip will take you to Crystal Lake—and to the top of Cranmore Mountain on the Skimobile. To climax your stay a trip is made through Crawford Notch to Bretton Woods, then down through Franconia Notch to the Flume Gorge—Old Man of the Mountain—Echo and Profile Lakes—and a thrilling ride by cable car to the summit of Cannon Mountain.



**10th DAY**—Leave Conway in afternoon for Boston, where you will board the "Owl" (berth included). Due New York early morning of eleventh day.

## 39

### 10 DAYS

**MONTREAL . . . QUEBEC  
TORONTO . . . NIAGARA FALLS  
. . . BUFFALO**

*Daily except Sunday—May 1 to Dec. 31*

**1st DAY**—Leave Grand Central Terminal 9:10 A.M. Luncheon and dinner served on train. Due Montreal late evening, stopping at the Berkeley Hotel (room with bath). **2nd DAY**—Conducted, lectured sightseeing tour of historic and modern Montreal. **3rd to 5th DAYS**—Leave Montreal after breakfast for Quebec. Luncheon served on train. Due Quebec early afternoon, staying at the Chateau Frontenac or the Clarendon Hotel (room with bath). Here you are free to see the sights, shop and have fun. After luncheon on fifth day leave Quebec for Montreal, arriving in time for dinner and overnight stop at the Berkeley Hotel (room with bath). **6th DAY**—Leave Montreal after breakfast for Toronto. Luncheon served on train. Arrive in time for dinner at the King Edward Hotel (room with bath). **7th DAY**—Leave after luncheon for Niagara Falls, Ontario, stopping at the General Brock Hotel overlooking the Canadian Horseshoe and American Falls. **8th and 9th DAYS**—Two glorious, memorable vacation days. A conducted tour to points of interest on both the Canadian and American sides of Niagara Falls is included. **10th DAY**—Leave by motor coach for Buffalo, where train connections are made for New York. Luncheon and dinner on train. Due New York 8:50 P.M.

## 40

### 10 DAYS

**BOSTON . . . PORTLAND . . . MAINE  
LAKES . . . WHITE MOUNTAINS  
. . . AERIAL TRAMWAY . . . GREEN  
MOUNTAINS . . . MONTREAL . . .  
SAGUENAY**

*Daily—June 20 to Sept. 20*

**1st DAY**—Leave Grand Central Terminal at 10:00 A.M. Luncheon served on train. Arrive Boston in early afternoon, stopping at the Bellevue or Parker House (room with bath). **2nd DAY**—Leave by motor coach for Portland arriving in time for luncheon. Two hour sail around Casco Bay with its 365 fascinating

islands. Stop overnight at the Eastland Hotel (room with bath). **3rd DAY**—After luncheon leave by motor coach for trip through Lakes Region of Maine to the White Mountains, arriving in time for dinner at Twin Mountain House\* (room without bath). **4th DAY**—Trip has been arranged to Cannon Mountain with thrilling ride on Aerial Tramway. **5th DAY**—Continue motor coach trip through the White Mountains and the Green Mountains of Vermont to Waterbury, arriving in time for dinner at the Waterbury Inn (room without bath). **6th DAY**—All day motor sightseeing trip to Mount Mansfield, returning in time for dinner at the hotel, leave for Montreal, arriving late that night. Stop at Berkeley Hotel (room with bath). **7th DAY**—Conducted, lectured motor tour of historic and modern Montreal. In early evening board steamer for Saguenay Cruise (berth included). **8th and 9th DAYS**—Two delightful days aboard a steamer cruising the St. Lawrence and Saguenay River viewing Cape Eternity and Cape Trinity. **10th DAY**—Dock at Montreal early in the morning. Leave Montreal at 9:20 A.M. for New York; luncheon and dinner served on train. Due New York 10:05 P.M.

\*After September 4 stay at Hotel Lee, Littleton

## 41

### 10 DAYS

**BOSTON . . . CAMBRIDGE  
. . . CONCORD . . . LEXINGTON . . .  
WAYSIDE INN . . . NEWPORT . . .  
NANTUCKET ISLAND . . .**

*Daily—June 15 to Aug. 30 except Wednesdays,  
Fridays, June 30, Aug. 23 and 28*

**1st DAY**—Leave Grand Central Terminal at 10:00 A.M. Luncheon served on train. Due Boston early afternoon, stopping at Bellevue or Parker House (room with bath). **2nd DAY**—All-day conducted, lectured motor coach tour of historic and modern Boston—Brookline and Cambridge—Lexington and Concord with luncheon at Henry Ford's famous Wayside Inn. **3rd DAY**—Leave for Newport, arriving in time for luncheon at the Viking Hotel (room with bath). **4th DAY**—Free to do as you wish. **5th DAY**—After breakfast motor coach trip to New Bedford for luncheon where connections are made with steamer to Nantucket Island, arriving in time for dinner at the Ocean House (room without bath). **6th to 9th DAYS**—Free for sun-tanning, swimming, sailing or sightseeing. **10th DAY**—After luncheon board steamer for Woods Hole

(Daylight Saving Time)



where train connection is made for New York. Dinner served on train. Due New York late same night.

## 42

10 DAYS

### MONTREAL . . . STE. MARGUERITE . . . LAURENTIAN MOUNTAINS

*Daily except Sundays—May 1 to Dec. 31*

**1st DAY**—Leave Grand Central Terminal at 9:10 A.M. Luncheon and dinner served on train. Due Montreal late evening, stopping overnight at Berkeley Hotel (room with bath). **2nd DAY**—Conducted, lectured motor tour of historic and modern Montreal. **3rd to 10th DAYS**—Leave morning of third day for Domaine D'Estereel at Ste. Marguerite in the Laurentians, stopping at the Hotel de la Pointe Bleue (room without bath). Here your time is your own to enjoy your Laurentian vacation as you wish. **10th DAY**—Return to Montreal for dinner at the Berkeley Hotel and train connections to New York (berth included). Due New York Pennsylvania Station morning of eleventh day.

## 43

10 DAYS

### BOSTON . . . GLOUCESTER . . . LEXINGTON . . . CONCORD . . . MOHAWK AND TACONIC TRAILS . . . ALBANY . . . HUDSON RIVER

*Daily—June 16 to Aug. 25*

**1st DAY**—Leave Grand Central Terminal at 10:00 A.M. Luncheon served on train. Due Boston in time to make connections to Gloucester, Mass., where you stay at the Hawthorne Inn (room without bath). **2nd to 7th DAYS**—You are free to enjoy the hospitality of this delightful New England Inn—to sail, swim, sightsee in this seaport town with its artist colony, and many historic landmarks. **8th DAY**—Depart Gloucester for Boston, stopping at the Bellevue or Parker House (room with bath). Afternoon sightseeing tour of Back Bay, Brookline, Cambridge, Lexington and Concord. **9th DAY**—All day scenic motor coach tour over the Mohawk and Taconic Trails with stop at Greenfield for luncheon. Arrive Albany for dinner and overnight at the Wellington Hotel (room with bath). **10th DAY**—Leave Albany by steamer for Hudson River cruise. Breakfast and luncheon served en route. Arrive New York 6:15 P.M.

## 44

10 DAYS

### MONTREAL . . . SHAWBRIDGE LAURENTIAN MOUNTAINS

*Daily except Sundays—May 1 to Dec. 31*

**1st DAY**—Leave Grand Central Terminal at 9:10 A.M. Luncheon and dinner served on train. Due Montreal late evening, stopping at Berkeley Hotel (room with bath). **2nd DAY**—Morning free. After luncheon, conducted sightseeing tour of historic and modern Montreal. **3rd to 10th DAYS**—Depart Montreal after breakfast by motor car for Shawbridge in the Laurentian Mountains, staying at the Maple Leaf Inn (room without bath). Here you have a full week to enjoy the grandeur of the Laurentian Mountains and their facilities for recreational pleasures. **10th DAY**—After luncheon return to Montreal for dinner at the Berkeley Hotel and train connections to New York (berth included). Due New York early morning of the eleventh day.

## 45

12 DAYS

### BOSTON . . . YARMOUTH . . . NOVA SCOTIA . . . ST. JOHN, NEW BRUNSWICK . . . HALIFAX . . . NOVA SCOTIA

*Mondays only—June 30 to Aug. 25*

**1st DAY**—Leave Grand Central Terminal 10:00 A.M. Luncheon served on train. Due Boston in time to make connections for overnight steamer trip to Yarmouth, Nova Scotia. **2nd to 4th DAYS**—Stop at the Lakeside Inn (room with bath) with plenty of time to sail, swim or shop for hooked rugs and antiques. **5th DAY**—Depart by motor coach for Digby connecting with steamer for St. John N. B., arriving early evening at the Admiral Beatty Hotel (room without bath). **6th and 7th DAYS**—Free for sightseeing in this historic port—or golf on the famous courses. **8th DAY**—Leave early morning by steamer for Digby, Nova Scotia, where connections are made for Halifax. Arrive Halifax in time for dinner, stopping at the Nova Scotian Hotel (room with bath). **9th and 10th DAYS**—Free to see romantic Citadel Hill. **11th DAY**—Depart for Yarmouth, where steamer connections are made for the return trip to Boston. **12th DAY**—Arrive Boston in morning. Connections with train to New York. Luncheon served on train. Due New York in afternoon.



# 46

12 DAYS

**MONTREAL . . . SAGUENAY . . .  
PORT KENT . . . ADIRONDACK  
MOUNTAINS . . . LAKE PLACID  
. . . AUSABLE CHASM . . . FORT  
TICONDEROGA . . . LAKE CHAM-  
PLAIN . . . ALBANY . . . HUDSON  
RIVER**

*Daily—except Sundays and June 12—May 30  
to Sept. 3*

**1st DAY**—Leave Grand Central Terminal at 9:10 A.M. Luncheon and dinner served on train. Arrive Montreal in the evening, stopping at the Berkeley Hotel (room with bath). **2nd DAY**—Conducted, lectured motor tour of historic and modern Montreal. Leave Montreal early evening for a two day Saguenay Cruise (berth included). **3rd and 4th DAYS**—Delightful days aboard your cruise ship—viewing colorful French Canada as it unfolds along the banks of Canada's two most picturesque rivers. **5th DAY**—Arrive Montreal early morning. After breakfast aboard ship, leave for Port Kent on beautiful Lake Champlain, stopping at Trembleau Hall (room without bath). **6th to 11th DAYS**—Free to enjoy all outdoor sports at the hotel which is directly on the shores of Lake Champlain. During your stay there will be a delightful moonlight sail on Lake Champlain. A tour by private motor car has been arranged to the famous Adirondack Mountains resort at Lake Placid, where you will be taken on a 16-mile speedboat ride. Circling Mirror Lake by motor you will see Rainbow Falls and Whiteface Mountain. Luncheon will be served at fashionable Lakeside Inn at Lake Placid. Another tour has been arranged to Ausable Chasm, an amazing natural phenomenon considered one of the most impressive scenic wonders of the American continent. Another motor trip takes you along the picturesque shores of Lake Champlain to Forts Crown Point and Ticonderoga. In the early afternoon of the eleventh day, leave Port Kent for Albany arriving in time for dinner and overnight stay at the Wellington Hotel (room with bath). **12th DAY**—Leave Albany in the morning for scenic steamer cruise down the Hudson River. Breakfast and luncheon served on board. Due New York 6:15 P.M.

*(Daylight Saving Time)*

# 47

14 DAYS

**MONTREAL . . . SAGUENAY . . .  
HISTORIC BOSTON . . . LEXING-  
TON . . . CONCORD . . . WAYSIDE  
INN . . . MARBLEHEAD**

*Saturday only—June 14 to Aug. 16*

**1st DAY**—Leave Grand Central Terminal at 9:10 A.M. Luncheon and dinner served on train. Due Montreal late evening, staying at the Berkeley Hotel (room with bath). **2nd DAY**—Conducted, sightseeing tour of historic and modern Montreal. Board steamer in the late afternoon for Saguenay Cruise (berth included). **3rd and 4th DAYS**—Aboard steamer, enjoying a voyage into the romantic parts. **5th DAY**—Due Montreal early morning where train connections are made for Boston, stopping at Bellevue Hotel or Parker House (room with bath). **6th DAY**—Conducted, lectured motor tour of historic and modern Boston, Lexington and Concord, stopping at Henry Ford's Wayside Inn for luncheon. **7th DAY**—Depart for Marblehead, where you will stay at the Hotel Rockmere (room with bath). **8th to 13th DAYS**—Free to enjoy the pleasures of the picturesque old seaport and summer resort. Two: short sails arranged during your stay. **14th DAY**—Return to Boston in time to make train for New York. Luncheon or dinner served on train. Due New York 11:00 P.M.

# 48

14 DAYS

**BOSTON . . . PORTLAND . . MAINE  
LAKES . . . WHITE AND GREEN  
MOUNTAINS . . . AERIAL TRAM-  
WAY . . . PORT KENT . . . LAKE  
CHAMPLAIN . . . AUSABLE CHASM  
. . . FORT TICONDEROGA . . . ADI-  
RONDACK MOUNTAINS . . . LAKE  
PLACID**

*Daily—June 19 to Sept. 14*

**1st DAY**—Leave New York at 10:00 A.M. Luncheon served on train. Due Boston early afternoon, stopping at Bellevue Hotel or Parker House (room with bath). **2nd DAY**—After breakfast leave for Portland via motor coach, arriving in time for luncheon at the Eastland Hotel. Two hour sail on beautiful Casco Bay with its 365 picturesque islands. Return for dinner and overnight stay at the Eastland Hotel (room with bath). **3rd DAY**—Motor trip to the White Mountains, stopping at the Twin Mountain House\* (room



without bath). **4th DAY**—Motor trip to Cannon Mountain with thrilling ride on Aerial Tramway. **5th DAY**—After luncheon at hotel, leave Twin Mountain for motor tour through the White Mountains of New Hampshire and the Green Mountains of Vermont to Burlington on the sloping shores of Lake Champlain. Here you will stay overnight at the Hotel Vermont (room with bath). **6th through 13th DAYS**—After breakfast leave for Ausable Chasm, arriving after luncheon at Trembleau Hall (room without bath). Here you may enjoy full facilities for all outdoor sports. During your stay arrangements have been made for a moonlight sail on Lake Champlain. You will also enjoy a full day conducted tour in private automobile to Crown Point and Fort Ticonderoga where stop is made for lunch and a visit at the famous fort of Indian and Revolutionary War times. On another day you leave by private car on conducted-full-day trip to Lake Placid for thrilling 16-mile speed boat ride around the lake. Luncheon is served at Lakeside Inn, Lake Placid. **14th DAY**—Leave Port Kent in the afternoon for New York. Dinner on train. Due New York 8:20 P.M.

\*After September 4 stay at Hotel Lee, Littleton

## 49

### 14 DAYS

**STE. MARGUERITE . . . DOMAINE D'ESTEREL . . . LAURENTIAN MOUNTAINS . . . MONTREAL . . . QUEBEC**

*Daily except Sundays—May 1 to Dec. 31*

**1st DAY**—Leave Grand Central Terminal 9:10 A.M. Luncheon and dinner served on train. Due Montreal in evening, stopping at the Berkeley Hotel (room with bath). **2nd to 8th DAYS**—After breakfast board train for Domaine D'Estherel at Ste. Marguerite, arriving here in time for lunch, you spend seven glorious vacation days high in the majestic Laurentians. You stay at the Hotel de la Pointe Bleue (room without bath). **8th DAY**—Leave Ste. Marguerite in late afternoon, arriving Montreal in time for dinner at the Berkeley Hotel (room with bath). **9th DAY**—After breakfast, leave for conducted lectured motor tour of historic and modern Montreal. **10th to 13th DAYS**—Leave Montreal after breakfast, arriving in Quebec in time for luncheon at the world famous Chateau Frontenac or the Clarendon Hotel (room with bath). Your time is free for four eventful days in the "Capital" of old French

Canada. **14th DAY**—Leave after luncheon for Montreal, arriving in time for dinner at the Berkeley Hotel. Leave that evening for New York (berth included). Due New York morning of the fifteenth day.

## 50

### 14 DAYS

**MONTREAL . . . STE. MARGUERITE . . . DOMAINE D'ESTEREL . . . LAKE CHAMPLAIN . . . PORT KENT . . . AUSABLE CHASM**

*Daily except Sundays—May 22 to Sept. 14*

**1st DAY**—Leave Grand Central Terminal 9:10 A.M. Luncheon and dinner served on train. Arrive Montreal late evening, stopping at the Berkeley Hotel (room with bath). **2nd to 9th DAYS**—After breakfast, leave Montreal for Domaine D'Estherel at Ste. Marguerite, arriving in time for luncheon. Here you spend seven glorious vacation days high in the majestic Laurentians, staying at the Hotel de la Pointe Bleue (room without bath). Leave after luncheon on the ninth day for Montreal, arriving in time for dinner at the Berkeley Hotel (room with bath). **10th to 14th DAYS**—Leave Montreal after breakfast by train for Port Kent, arriving for luncheon at Trembleau Hall on beautiful Lake Champlain (room without bath). At Port Kent you may enjoy full facilities for all outdoor sports. During your stay, arrangements have been made for a moonlight sail on Lake Champlain and a trip to Ausable Chasm. Leave Port Kent after luncheon on fourteenth day. Dinner served on train. Due New York 8:20 P.M.

## 51

### 15 DAYS

**PORTLAND . . . WHITE MOUNTAINS . . . BOSTON . . . MARBLE HEAD**

*Fridays only—June 13 to Aug. 22*

**1st DAY**—Leave Grand Central Terminal 9:00 P.M. on "State of Maine Express." (berth included). **2nd DAY**—Due Portland early morning. After breakfast in Pullman Lounge Car, depart for Conway Center in the White Mountains, staying at the Presidential Inn (room without bath). **3rd to 6th DAYS**—Free to enjoy a real vacation in the mountains. During your stay here, tours



have been arranged on different days. One trip will take you to Crystal Lake and to the top of Cranmore Mountain on the Skimobile. To climax your stay, a trip is made through Crawford Notch to Bretton Woods, then down through Franconia Notch to the Flume Gorge—Old Man of the Mountain—Echo and Profile Lakes—and a thrilling ride by cable car to the summit of Cannon Mountain. **7th DAY**—Depart for Boston, stopping overnight

at the Bellevue Hotel or Parker House (room with bath). **8th DAY**—Depart Boston for Marblehead, stopping at the Rockmere Hotel (room with bath). **9th to 14th DAYS**—Free to enjoy seashore life in this enchanting village by the sea. Swimming, boating and sightseeing are favorite summer diversions here. **15th DAY**—Return to Boston in time for train to New York. Dinner served on train. Due New York about 11:00 P.M.

---

## GENERAL TOUR INFORMATION

All leaving and arrival times are Daylight Saving Time.

Pilgrim Tour Tickets are good only on trains specified on tickets. These trains are scheduled to provide ample time for sightseeing in places visited. **ALL TRAINS USED** have comfortable lounge-type seats in cool, air-conditioned streamlined coaches of the most modern type. **FAMOUS NEW HAVEN DINERS** or **GRILL CARS** will be attached, and delicious luncheons and dinners will be served to Pilgrim Tour patrons enroute.

Duration of Pilgrim Tours is clearly indicated in upper right-hand corner of Tour description.

Stop-overs can be arranged for at time of booking.

At hotels, Tour rates include rooms with twin beds and bath (except when noted to the contrary, as there are a few summer resort hotels enroute where there are not a sufficient number of rooms equipped with private bath). Rates are based on two people occupying a room.

All meals New York to New York are included in rate unless otherwise specified.

Gratuities are not included.

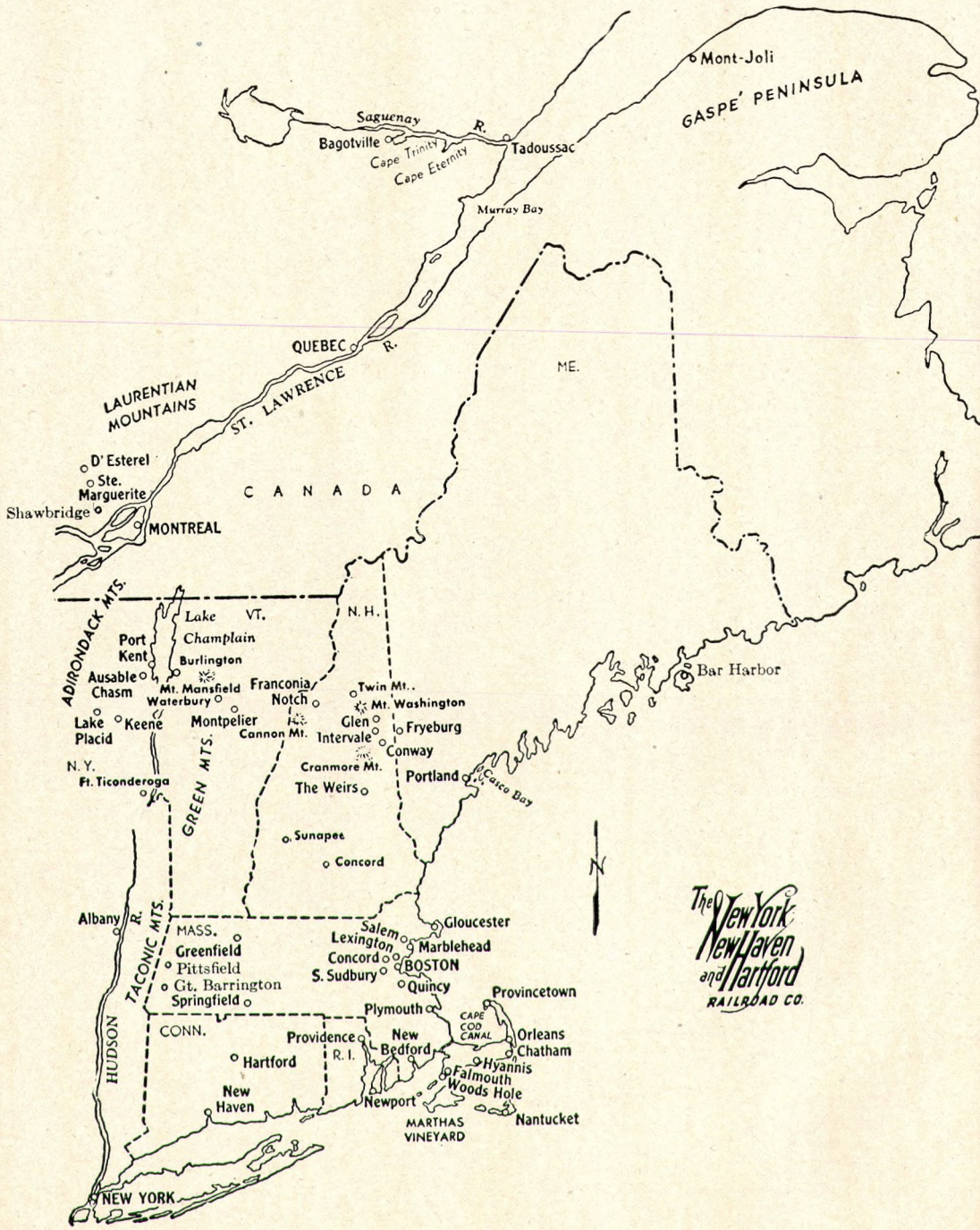
Overnight train trips include lower berth accommodations.

Motor coaches call for Pilgrim Tour guests at hotels and return them to hotel on completion of the various sightseeing trips.

**NO PASSPORTS REQUIRED TO VISIT CANADA.** Insofar as citizens of the United States are concerned, they may enter and leave Canada as heretofore, without passports. Regulations do not require passports for United States citizens visiting Canada, although it is desirable that United States citizens visiting Canada have with them means of identification, such as birth certificates, naturalization papers, poll tax receipts or certificates from public officials who can certify American citizenship of the traveler.

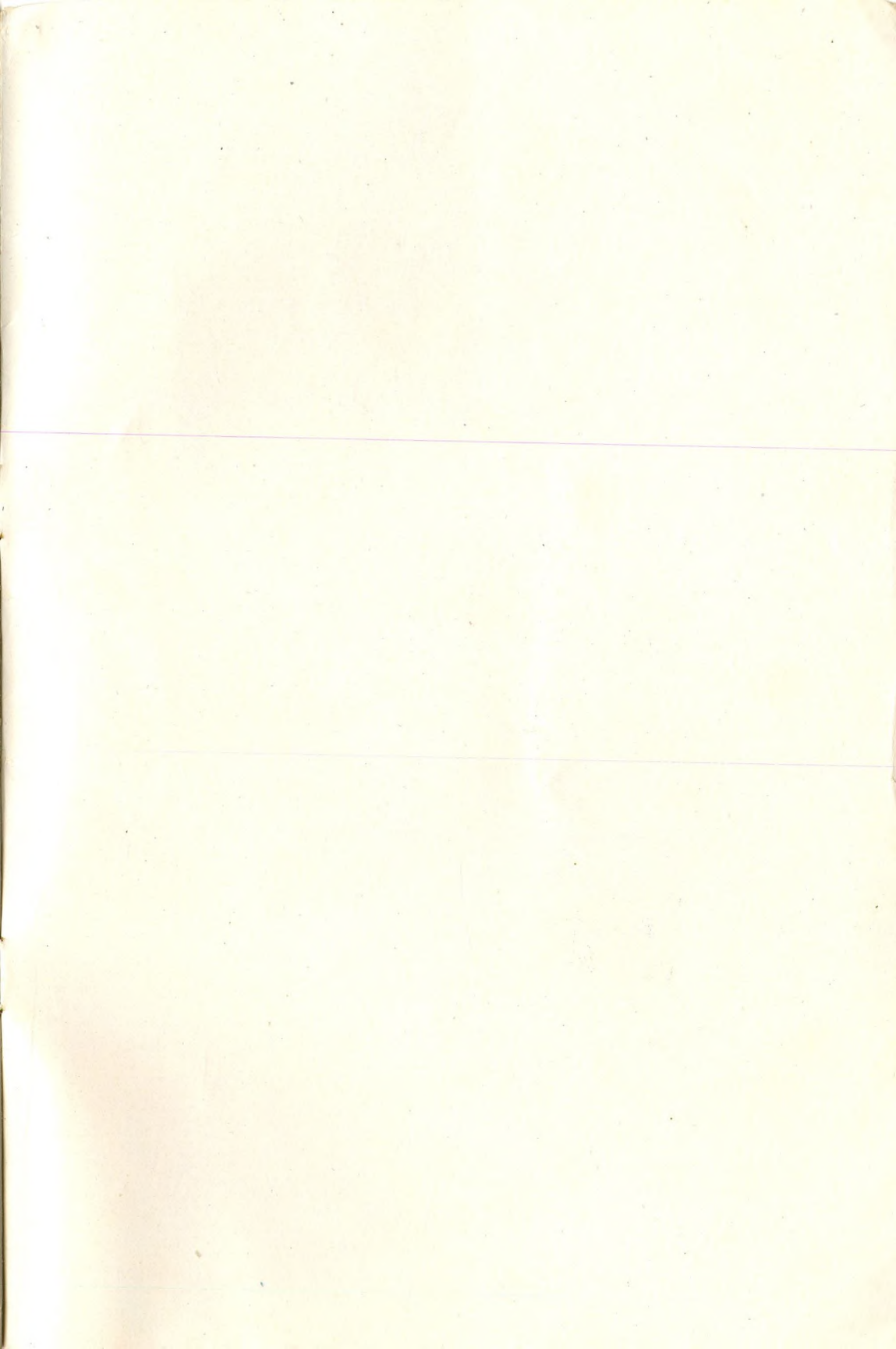
To secure reservations send full name and address, also stating whether Mr., Mrs., or Miss, with deposit of \$10.00. A complete Tour itinerary will be provided, showing leaving and arrival times, and full details of tour arrangements, when ticket is issued.





*The*  
**New York**  
**New Haven**  
 and **Hartford**  
 RAILROAD CO.







1947

# Pilgrim Tours



The New York  
New Haven  
and Hartford  
RAILROAD CO.