

OCTOBER 29, 1967
Subject to change without notice



The Northwest's Own Railway

THROUGH SERVICE

VIA

NORTH COAST
LIMITED

EMPIRE
BUILDER



GREAT NORTHERN

TIME TABLES

TRAVEL THE
COLUMBIA RIVER
SCENIC ROUTE
THROUGH THE
CASCADE RANGE

OCTOBER 29, 1967
Subject to change without notice



The Northwest's Own Railway

THROUGH SERVICE

VIA

NORTH COAST
LIMITED

EMPIRE
BUILDER



GREAT NORTHERN

TIME TABLES

TRAVEL THE
COLUMBIA RIVER
SCENIC ROUTE
THROUGH THE
CASCADE RANGE



SPOKANE, PORTLAND AND SEATTLE RAILWAY SYSTEM

S. P. & S. RY. — OREGON TRUNK RY. — OREGON ELECTRIC RY. — (Subsidiaries of Northern Pacific and Great Northern Railways)

TRANSCONTINENTAL TRAIN SERVICE — BETWEEN PORTLAND, PASCO AND EAST

SPOKANE, PORTLAND AND SEATTLE, NORTHERN PACIFIC AND CHICAGO, BURLINGTON AND QUINCY RAILWAYS

Westbound, Read Down

Eastbound, Read Up

Daily The Mainstreeter C.B.&Q. 47	Daily North Coast Ltd. 25	Chicago, Burlington and Quincy Railway (Central Time)	Mil. f m P rt	Daily North Coast Ltd. 26	Daily The Mainstreeter C.B.&Q. 48
10.40	1.15	Lv Chicago (Union Station) Ar	2327	2.55	7.40
11.17	1.52	Lv Aurora Ar	2289	2.12	6.40
1.25	3.26	Lv Savanna Ar	2182	12.34	4.23
4.40	5.36	Lv LaCrosse Ar	2030	10.16	1.40
7.30	8.00	Ar St. Paul (Union Station) Lv	1900	8.20	11.10
N.P. 1					
Northern Pacific Railway					
8.40	8.25	Lv St. Paul (Union Station) Ar	1900	7.30	10.20
9.15	9.00	Lv Minneapolis (Hen.AV.Stn.) Ar	1890	7.00	9.47
The Mainstreeter					
11.53	11.05	Lv Staples Ar	1733	4.33	6.56
2.35	1.03	Lv Fargo Ar	1622	2.27	4.15
4.32	2.42	Lv Jamestown Ar	1530	12.52	2.25
6.20	4.15	Lv Bismark Ar	1428	11.07	12.45
6.07	3.42	Lv Mandan (Mountain Time) Ar	1423	9.51	11.16
8.56	5.29	Lv Dickinson Ar	1322	8.07	8.41
11.45	7.27	Lv Glendive Ar	1217	6.04	5.49
1.18	8.43	Lv Miles City Ar	1138	4.38	4.16
2.22	9.44	Lv Forsyth Ar	1093	3.47	3.05
4.58	11.34	Lv Billings Ar	991	1.58	12.53
The Mainstreeter					
7.40	1.42	Lv Livingston Ar	875	11.51	10.25
8.47	2.27	Lv Bozeman Ar	851	11.06	9.35
11.30	5.01	Lv Butte Ar	756	8.40	6.20
11.20	4.35	Lv Helena Ar	753	8.40	6.45
1.22	6.01	Lv Garrison Ar	704	7.24	4.52
3.14	7.17	Lv Missoula Ar	636	6.03	3.15
4.04	7.56	Lv Paradise (Pacific Time) Ar	565	3.14	12.18
6.21	Lv Sandpoint Ar	446	9.48
76.53	Lv Athol Ar	418	9.12
7.52	11.17	Ar Spokane (N.P. Station) Lv	378	11.44	8.30
The Mainstreeter					
8.21	11.30	Lv Spokane (N.P. Station) Ar	378	11.29	8.01
11.26	2.15	Ar Pasco Ar	231	8.49	5.00
S.P.S. No. 3					
12.45	2.45	Lv Pasco Ar	231	7.00	1.55
2.51	4.40	Ar Wishram Ar	106	5.00	11.53
4.50	6.30	Ar Vancouver Lv	10	3.22	10.10
5.30	7.00	Ar Portland (Union Station) Lv	0	3.00	9.45

21-43	C.B.&Q. Connections at Billings for Denver & Mo. River Pts.	42-20
5.00	Lv Kansas City (CB & Q) Ar	12.10
6.30	Lv St. Joseph Ar	10.30
10.25	Lv Omaha Ar	7.30
12.10	Lv Lincoln Ar	6.10
7.45	Ar Billings Lv	10.10

- ⊙ Bus from Logan.
- ⊙ Bus from Garrison.

EQUIPMENT

VISTA-DOME NORTH COAST LIMITED BETWEEN CHICAGO AND PORTLAND

All Lightweight Equipment

S. P. & S. 1-2, N. P. 25-26, C. B. & Q. 25-26

STANDARD SLEEPER-CLUB LOUNGE CAR — With 6 roomettes, 3 double bedrooms. Between Pasco and Portland. (Car 10 westbound, Car 20 eastbound.)

"LOUNGE IN THE SKY" — Vista-Dome Sleeper-Buffer-Lounge, Between Chicago-Pasco. Roomettes, Duplex Single Rooms, Bedrooms; (Car 255 westbound, Car 265 eastbound.)

SLUMBER - COACH — Between Chicago and Pasco. Sleeping accommodations may be purchased with coach tickets (SC-25 westbound, SC-26 eastbound).

STANDARD SLEEPING CAR — Between Chicago and Portland. Newest type all-room car. 4 double bedrooms, 6 roomettes, 8 duplex roomettes, (258 westbound, 268 eastbound.)

VISTA-DOME COACH — Between Chicago and Portland. Chaise lounge "sleepy hollow" seats with leg rests for reclining full length. (C250 westbound, C260 eastbound). Seats reserved in advance. Seat charge.

DELUXE COACH — Between Spokane and Portland, 56 reclining seats. (Advanced reservations required.) 50c seat charge.

LEWIS & CLARK TRAVELLER'S REST BUFFET-LOUNGE CAR — Between Chicago and Pasco. Select and a la carte meals, snacks and beverages, magazines, lounge section.

DINING CAR SERVICE — Between Chicago and Portland. Club breakfasts, Table d'hote dinner, Table d'hote luncheon. Special plate luncheons and dinners. Also a la carte service.

STEWARDESS SERVICE — A Stewardess is a member of the train personnel between Chicago and Pasco.

TICKETS — All classes of regular and reduced rate rail tickets will be honored for passage on the North Coast Limited except during period June 1st through September 22nd and December 15th through January 4th each year. Half rate tickets will not be honored.

THE MAINSTREETER

BETWEEN CHICAGO AND PORTLAND

S. P. & S. 3-4, N. P. 1-2, C. B. & Q. 47-48

DELUXE RECLINING SEAT COACHES — Between Chicago and Pasco. Between Pasco and Portland. Between Spokane and Portland.

DINING CAR SERVICE — Between St. Paul and Pasco.

SPOKANE, PORTLAND AND SEATTLE RAILWAY SYSTEM

S. P. & S. RY. — OREGON TRUNK RY. — OREGON ELECTRIC RY. — (Subsidiaries of Northern Pacific and Great Northern Railways)



TRANSCONTINENTAL TRAIN SERVICE — BETWEEN PORTLAND, SPOKANE AND EAST

VIA CHICAGO, BURLINGTON & QUINCY, GREAT NORTHERN AND SPOKANE, PORTLAND AND SEATTLE RAILWAYS

Westbound, Read Down			Eastbound, Read Up			
Daily Western Star No. 47	Daily Empire Builder No. 31	Chicago, Burlington and Quincy Railroad (Central Time)	Miles from Portland	Daily Empire Builder No. 32	Daily Western Star No. 24	Daily No. 48
10.47	1.15	Lv Chicago (Union Stn) Ar	2260	2.55	11.10	7.40
11.17	1.52	Lv Aurora Ar	2222	2.12	10.20	6.40
1.25	3.26	Lv Savanna Ar	2115	12.34	8.40	4.23
4.40	5.36	Lv LaCrosse Ar	1963	10.16	6.16	1.40
7.30	8.00	Ar St. Paul (Union Stn) Lv	1833	8.10	4.20	11.10
No. 3	No. 27	Great Northern Railway			No. 28	No. 4
7.30	9.00	Lv St. Paul (Union Stn) Ar	1833	6.35	3.30	7.50
7.55	9.20	Lv Minneapolis (GN Stn) Ar	1822	6.00	2.50	7.20
11.20	10.55	Lv Wilmar Ar	1731	4.25
1.17	12.47	Lv Breckenridge Ar	1618	2.20
9.08	Lv St. Cloud Ar	1.23	6.00
11.01	Lv Fergus Falls Ar	11.01	3.49
12.21	2.25	Lv Fargo Ar	1571	1.20	9.50	2.40
1.50	Lv Grand Forks Ar	1493	12.57
.	4.32	Lv New Rockford Ar	1447	11.00	7.41
.	6.20	Ar Minot Lv	1338	9.05	5.50	9.00
.	8.50	Ar Williston (Central Time) Lv	1218	6.30	3.20
.	8.10	Lv Williston (Mountain ") Ar	1218	5.20	2.10
.	11.10	Lv Glasgow Ar	1062	d 2.35	11.10
.	2.55	Lv Havre Ar	909	11.45	8.05
.	ⓑ 6.10	Ar Great Falls Lv	903	ⓐ 5.00
.	4.50	Lv Shelby Ar	804	9.57	6.10
.	5.28	Lv Cut Bank Ar	780	g 9.20	5.45
.	f 6.34	Lv Glacier Park Ar	733	f 4.37
.	f 8.16	Lv Belton Ar	676	f 2.50
.	8.42	Lv Columbia Falls Ar	661	2.25
.	Ⓐ 8.40	Lv Kalispell Ar	676	Ⓐ 6.50	Ⓐ 3.10
.	9.10	Lv Whitefish Ar	653	6.00	2.00
.	11.39	Lv Libby Ar	537	3.36	11.15
.	12.01	Ar Troy (Mountain Time) Lv	519	3.10	10.50
.	11.05	Lv Troy (Pacific Time) Ar	519	2.10	9.45
.	11.53	Lv Bonner's Ferry Ar	488	f 8.56
.	12.35	Lv Sandpoint Ar	454	8.20
.	2.15	Ar Spokane (GN Station) Lv	379	11.10	6.40
No. 3	No. 1	Spokane, Portland and Seattle Railway		No. 2	No. 4	
.	11.40	Lv Spokane (GN Station) Ar	379	9.50	5.40
.	2.45	Lv Pasco Lv	231	7.10	2.30
.	4.40	Ar Wishram Lv	106	5.00	11.53
.	6.30	Ar Vancouver Lv	10	3.22	10.04
.	7.00	Ar Portland (Un Station) Lv	0	3.00	9.45

EQUIPMENT

THE STREAMLINED EMPIRE BUILDER (Lightweight Streamlined Equipment Only)

CHICAGO — PORTLAND CB&Q 31-32, GN 31-32, SP&S 1-2

Standard Sleeper-Club-Lounge car with 6 Roomettes, 3 Double Bedrooms, between Spokane and Portland. (Car 10 Westbound, Car 20 Eastbound.)

Great Dome Buffet-Lounge. Luxurious full length Dome-Lounge with colorfully appointed Beverage Lounge in lower section between Chicago and Spokane.

Standard Sleepers offering latest types of Pullman accommodations. Two Compartments, 5 Double Bedrooms, 6 Roomettes. Between Chicago, Spokane and Portland (317 Westbound, 327 Eastbound).

Great Dome Coach. Reclining seats with leg rests. Radio reception. Between Chicago and Portland one 46-seat coach (105 Westbound, 205 Eastbound).

Advance coach seat reservations should be made so that definite coach seat assignment may be obtained before departure. All seats reserved in advance (including seat for children under 5 years of age) seat charge.

DeLuxe Coach between Spokane and Portland. 56 reclining seats. Advanced reservations required. 50c seat charge.

The Ranch-Lounge Car — Between St. Paul and Spokane. Radio reception. Coffee shop with counter and table service at economical meal prices. Club breakfasts: fruits and fruit juices, cereals, eggs, toast, rolls, doughnuts and beverages. Plate luncheons and dinners. Soups, sandwiches, salads, desserts and beverages available throughout the day.

Dining Car with the most modern furnishings, decor and semi-private dining sections between Chicago and Portland. Radio reception. Traditional famous Great Northern meals. Club breakfasts, plate luncheons, table d'hote luncheons, plate dinners, table d'hote dinners. Also a la carte service for all meals.

To avoid standing in line for dinner, passengers have the choice of one hour dining periods beginning at 5 P.M. Dining car steward on the train will arrange dinner reservations.

Tickets — Circus, Show, Banana Messenger, Drover's or Caretaker's tickets and Livestock Contracts will not be honored. Reduced rate tickets honored certain periods, consult agent.

Baggage. Limited amount of checked baggage will be handled.

THE WESTERN STAR (Lightweight Streamlined Equipment)

CHICAGO - PORTLAND NO EXTRA FARE

CB&Q, 47-48, GN 27-28, SP&S 3-4

ALL CLASSES OF TICKETS HONORED

Standard Sleeping Cars offering modern Pullman accommodations between Chicago, St. Paul and Spokane, one car containing 16 Duplex Roomettes, and 4 Bedrooms. Double Bedrooms are connecting and may be sold ensuite.

Streamlined Day-Nite Coaches between Chicago and Spokane. Deluxe coaches between Spokane and Portland.

Diner between St. Paul and Spokane.

c — No. 31 stops at Glasgow to discharge revenue passengers from Minot and East and to receive revenue passengers for Spokane and West where No. 1 is scheduled to stop. d — No. 32 stops at Glasgow to discharge revenue passengers from Spokane and West and to receive revenue passengers for Minot and East where No. 2 is scheduled to stop. e — No. 31 stops at Cut Bank to discharge revenue passengers from Williston and East and to receive revenue passengers for scheduled stops Spokane and West. g — No. 32 stops at Cut Bank to discharge revenue passengers from Spokane and West and to receive revenue passengers for scheduled stops Williston and East. Ⓐ Bus service, rail tickets honored. ⓑ Via train 3 from Havre. ⓒ Via train 4 to Havre.

STANDARD TIME

Light face figures denote A.M. time.

Bold face figures denote P.M. time.

Ar. Arrive

Lv. Leave.

f Stop on Signal.



SPOKANE, PORTLAND AND SEATTLE RAILWAY SYSTEM

S. P. & S. RY. — OREGON TRUNK RY. — OREGON ELECTRIC RY. — (Subsidiaries of Northern Pacific and Great Northern Railways)

PORTLAND — WISHRAM — PASCO — SPOKANE TRAINS

Westbound, Read Down					Eastbound, Read Up					SPECIAL STOPS		
SP&S No. 3 Daily	NP 1 SP&S 3 Daily	NP No. 25 SP&S No. 1 Daily	SP&S No. 1 Daily	Elev. va.	Spokane, Portland and Seattle Railway	Miles from Port- land	SP&S No. 2 Daily	SP&S No. 2 NP No. 26 Daily	SP&S ⁴ NP 2 Daily	SP&S No. 4 Daily	No's 1 & 2 Stops only as shown.	
9.30	8.21	11.30	11.40	1871	Spokane ☆☆ (business capital of...)							
				1920	Great No. Station Inland Empire) Ar	379.5	9.50	11.29	8.01	5.40		
				2292	North Pacific Station	377.5						
				2215	South Cheney } Vast plateaus of	360.7						
				2090	Amber } Eastern Wash.	349.5						
				1947	Rodna	343.3						
				1826	Lamont (West edge great Palouse	334.7						
				1706	Rockwell } Grain district	329.4						
				1468	Macall	323.8						
				1246	Benge	311.1						
				1067	Hooper	299.5						
				964	Washtucna	290.9						
				888	Sperry	285.3						
				719	Kahloutas } Spectacular Devil's	277.8						
				496	Farrington } Canyon	268.6						
				466	Snake River	256.3						
				454	Redd } Snake River Canyon	250.5						
				358	Levey } Ice Harbor Dam	244.8						
					PASCO } ☆☆☆ Lv	231.3	7.10	8.49	5.00	2.30		
				358	PASCO	231.3	7.00	7.00	1.55	1.55		
				352	Kennewick (Columbia River	228.5						
				352	Finley } Crossing	223.9						
				352	Yellepit (Named after Indian Chief	215.8						
				349	Berrian met by Lewis&Clark,1805-6)	203.3						
				323	No. McNary (McNary Dam)	195.2						
				266	Plymouth (Opp. Old Oregon Trail)	192.0						
				259	Paterson	179.8						
				241	Whitecomb	170.4						
				242	Alderdale	162.2						
				230	McCredie	157.6						
				216	Roosevelt	146.7						
				203	Sundale	140.8						
				179	Goodnoe	130.8						
				175	Cliffs (Mt. Hood, 11,225 ft. visible)	119.7						
				166	Maryhill	114.3						
				166	WISHRAM (Mt. Hood visible) Lv	106.1	5.00	5.00	11.53	11.53		
				166	Along	106.1	4.58	4.58	11.46	11.46		
				161	the	103.2						
				123	North	93.3						
				101	Bank	85.3						
				101	LYLE (Memaloose is Indian burying)	83.3			gm11.26	gm11.26		
				101	Bingen-White Salmon (Mt. Hood)	75.9	● 4.29	● 4.29	gm11.17	gm11.17		
				101	Underwood (Apple country)	72.5						
				99	Hood (Mt. Hood, 11,225 ft. visible)	70.9						
				98	Cooks (Mitchell Point to south)	65.8						
				74	Stevenson (Cascades of Columbia)	54.3	● 4.08	● 4.08	g10.56	g10.56		
				51	North Bonneville (Bonneville Dam)	49.3						
				51	Skamania (Beacon Rock, alt. 840 ft.)	42.1						
				48	Prindle (Columbia River)	37.8						
				48	Mt. Pleasant (Mt. Hood, 11,225 ft.)	32.0						
				48	Clark	28.0						
				48	Trail	23.8	● 3.38	● 3.38	m10.26	m10.26		
				48	of	19.8						
				46	1805-6							
				46	Ar... VANCOUVER (founded 1825) Lv	10.0	3.22	3.22	10.10	10.10		
				46	Lv... VANCOUVER	10.0	3.19	3.19	10.04	10.04		
				56	East St. Johns (5 snow mts.)	7.0						
				32	Union Station	0.0	3.00	3.00	9.45	9.45		
					PORTLAND (City of Roses) ☆☆☆ Lv							

☆☆ Rail-Auto available at this point

FOR THROUGH SERVICE AND CONSIST OF ALL TRAINS, SEE PRECEDING PAGES 2 and 3

A TRANS-CONTINENTAL SYSTEM OF RAILWAYS THROUGH AMERICA'S WONDERLAND

Traversing the northern states between the Pacific Northwest and Chicago presents a veritable wonderland offering passengers a splendid variety of ever-changing scenery.

Over these lines, between Portland and Chicago, are operated four of America's famous trains, the Streamlined Empire Builder and the Streamlined Western Star, via S.P. & S. Spokane, G.N. St. Paul, C.B. & Q. Chicago, and

the Streamlined Vista Dome North Coast Limited and The Streamlined Mainstreeter via S. P. & S. Pasco, N. P. St. Paul and C.B. & Q. Chicago where connections are made to all points east and south.

These trains provide passengers with every feature of modern railway travel for their comfort, and pleasure.

STANDARD TIME

Light face figures denote A.M. time.

Bold face figures denote P.M. time.

Ar. Arrive

Lv. Leave.

f Stop on Signal.

SPOKANE, PORTLAND AND SEATTLE RAILWAY SYSTEM

S. P. & S. RY.— OREGON TRUNK RY.— OREGON ELECTRIC RY.— (Subsidiaries of Northern Pacific and Great Northern Railways)



PORTLAND - REDMOND - BEND TRAINS

Read Down			Read Up		
Elev.	No. 105 Sat. Only	No. 103 Daily Ex. Sat. & Sun.	Oregon Trunk Ry. (Mixed Trains)	Miles from P't'd	No. 102 Daily Ex. Sun.
3618	7.00	11.00	Lv Bend.....t Ar	257.6	7.00
3572	f 7.11	f 11.15	Lv Desclutes.....Ar	250.3	f 6.35
2983	7.30	11.40	Lv Redmond.....t Ar	240.7	6.15
2918	f 7.35	f 11.46	Lv Prineville Jct.....Ar	238.4	f 5.50
2863	f 7.40	f 11.52	Lv Terrebonne.....Ar	235.6	f 5.45
2850	f 7.52	f 12.09	Lv Opal City.....Ar	227.7	f 5.31
2624	f 8.02	f 12.25	Lv Culver.....Ar	221.1	f 5.18
2517	8.12	12.35	Lv Metolius.....t Ar	216.3	5.10
2458	8.25	12.55	Lv Madras.....t Ar	211.1	5.00
2169	f 8.35	f 1.10	Lv Paxton.....Ar	205.9	f 4.39
1787	8.51	1.26	Lv Gateway.....t Ar	200.1	4.23
1254	f 9.13	f 1.48	Lv South Junction...Ar	191.9	f 4.01
1203	f 9.24	f 1.59	Lv Kaskela.....Ar	186.2	f 3.45
1074	f 9.43	f 2.18	Lv Dixon.....Ar	177.2	f 3.26
1012	f 9.50	2.25	Lv Dant.....Ar	173.6	3.19
960	f 9.57	f 2.32	Lv Nena.....Ar	169.9	f 3.11
852	10.20	3.01	Lv Maupin.....t Ar	160.7	2.53
783	f 10.35	f 3.16	Lv Sherar.....Ar	153.4	f 2.39
606	f 10.51	f 3.32	Lv Oakbrook.....Ar	145.8	f 2.23
510	f 11.10	f 3.51	Lv Sinamox.....Ar	136.5	f 2.04
508	f 11.18	f 3.59	Lv Dike.....Ar	132.5	f 1.55
354	f 11.35	f 4.16	Lv Lockit.....Ar	124.4	f 1.38
286	f 12.01	f 4.41	Lv Moody.....Ar	112.0	f 1.13
166	12.15	5.00	Ar Wishram.....t Lv	106.1	1.00
	No. 3 Daily		Spokane, Portland & Seattle Railway		No. 4 Daily
166	3.00		Lv Wishram.....Ar	106.1	11.46
32	5.30		Ar Portland.....t Lv	0.0	9.45

EQUIPMENT BETWEEN WISHRAM and BEND

No Leg Rest — Non Air Conditioned

RAIL TRAVEL CREDIT CARD PLAN

permits purchase of Rail and Pullman tickets from any S. P. & S. Railway Co. agent on Credit by securing a Credit Card from the Rail Travel Credit Agency, Room 436, Union Station, Chicago, Ill.

FREE BAGGAGE CART SERVICE

is available at stations in the following cities: Spokane, Pasco, Wash.; Portland, Ore. Please use them to your convenience, leaving them at train side or at the street curb.

YOUR ROOM'S READY

...when you wire ahead!



Western Union Hotel Reservation Service is the fast, convenient, inexpensive way to make and confirm the accommodations you want... where you want them. **WESTERN UNION**

SAVE MONEY ON HALF-FARE FAMILY TRAVEL PLAN!

Take Advantage of Our Family Fares

ONE-WAY TRAVEL — Head of family pays regular one-way fare, first class or coach, other parent and children, 12 through 21, each pay half fare. Children 5 through 11, pay one-quarter fare. Children under five are carried free.

ROUND-TRIP TRAVEL — Head of family pays regular round trip fare, first class or coach, other parent and children, 12 through 21, each pay one-way fare for the round trip. Children, 5 through 11, pay half of the one-way fare for round trip. Children under five are carried free.

For details consult any Spokane, Portland and Seattle Railway travel representative.

PACIFIC TRAILWAYS

PORTLAND - BEND

Bus	Bus	Bus	Bus
.....	PORTLAND... Ore.....
.....	Madras..... Ore.....
.....	Redmond..... Ore.....
.....	BEND..... Ore.....

Rail tickets routed via OT — S. P. & S. Railways from or to Central Oregon points will be honored to or from Portland, Oregon by the Mt. Hood Stages (Pacific Trailways). Ask agent for details.

FREIGHT SERVICE

Route your freight shipments via the Spokane, Portland and Seattle Railway for fast and dependable service — between Portland, Astoria, Pasco, Spokane, Yakima, Walla Walla, Lewiston, Eugene, Bend and all points east and south.

Let Us Handle Your Transportation Problems

FREIGHT SERVICE ONLY

Portland — St. Helens — Astoria

0	Portland	71.2	Westport
7.3	Linnton	73.5	Wauna
19.9	Scannoose	76.8	Bradwood
27.6	St. Helens	86.5	Knappa
41.9	Prescott	99.7	Astoria
45.8	Rainier	105.6	Warrenton
58.0	Locoda	118.0	Seaside
62.2	Clatskanie		

HAMMOND BRANCH

Miles	STATIONS
0	Warrenton.....
1.8	Flavel.....
2.7	Hammond.....

FREIGHT SERVICE ONLY

is operated on the following Branches

S. P. & S. Railway

GOLDENDALE BRANCH

Miles	STATIONS
0	Lyle.....
10.3	Pitt.....
13.4	Klickitat.....
16.9	Walkikatus.....
30.2	Warwick.....
35.3	Centerville.....
41.6	Goldendale.....

VERNONIA BRANCH

Miles	STATIONS
0	Portland.....
7.3	Linnton.....
11.7	Burlington.....
17.1	Bowers Junction.....
21.9	North Plains.....
27.5	Banks.....
31.7	Manning.....
43.1	Braun.....
48.5	Vernonia.....

Oregon Electric Railway

PORTLAND - SALEM - ALBANY - EUGENE LINE

Miles	STATIONS
0	Portland.....
21.5	Forest Grove Jct.....
27.6	Beaverton.....
32.1	Tigard.....
36.1	Tualatin.....
39.0	Tonquin.....
43.0	Wilsonville.....
49.1	Donald.....
57.4	St. Louis.....
63.1	Hopmere.....
64.1	Quinaby.....
71.2	Salem.....
79.9	Orville.....
96.5	Albany Yard.....
97.8	Albany.....
124.2	Harrisburg.....
128.7	Junction City.....
142.8	Eugene.....

FOREST GROVE BRANCH

Miles	STATIONS
0	Forest Grove Jct.....
0.8	Oreco.....
4.5	Hillsboro.....
7.9	Cornelius.....
10.6	Forest Grove.....

SANTIAM BRANCH

Miles	STATIONS
0	Albany Yard.....
4.5	Froman.....
6.7	Fry.....
8.4	Goltra.....
10.3	Tallman.....
14.1	Lebanon.....
15.9	Weldwood.....
20.2	Waterloo.....
22.1	Nye.....
28.8	Sweet Home.....
31.9	Foster.....



SPOKANE, PORTLAND AND SEATTLE RAILWAY SYSTEM

CONNECTIONS AT PORTLAND

S. P. & S. RY. — OREGON TRUNK RY. — OREGON ELECTRIC RY. — (Subsidiaries of Northern Pacific and Great Northern Railways)

PORTLAND - PUGET SOUND

Northern Pacific Ry. - Great Northern Ry. - Union Pacific R.R.

Northbound — Read Down			Southbound — Read-Up			
G.N. 459 Daily	N.P. 407 Daily	U.P. 457 Daily		G.N. 460 Daily	N.P. 408 Daily	U.P. 458 Daily
1.30	5.00	9.45	Lv. Portland, Un. Sta. Ar	12.05	4.00	9.30
1.49	5.18	10.03	Lv. Vancouver, Wn. Ar	11.43	3.38	9.08
			Ar. Kalama Lv	f 11.11		
2.29	5.55	10.40	Ar. Kelso-Longview Lv	10.59	2.58	8.25
f 2.39			Ar. Castle Rock Lv	f 10.47		
3.11	6.39	11.24	Ar. Chehalis Lv	10.14	2.17	7.44
3.21	6.47	11.32	Ar. Centralia Lv	10.07	2.10	7.37
f 3.44	b 7.08	11.53	Ar. East Olympia Lv	b 9.43	b 1.47	v 7.14
4.25	7.49	12.34	Ar. Tacoma Lv	9.01	1.05	6.32
k 5.30	k 8.45	u 1.30	Ar. Seattle Lv	k 8.05	k 12.15	u 5.30

b — To and from Olympia by bus. k — King Street Station.
u — Union Station.
v — No connecting bus service between East Olympia and Olympia.

SOUTHERN PACIFIC COMPANY

Southbound — Read Down Northbound — Read Up

11		12
4.15	Lv. Portland Ar	8.50
5.25	Ar. Salem Lv	7.18
5.58	Ar. Albany Lv	6.48
6.53	Lv. Eugene Lv	6.05
11.23	Lv. Klamath Falls Lv	1.25
3.59	Ar. Redding Lv	8.35
7.35	Ar. (a) Sacramento(a) Lv	5.10
8.07	Ar. Martinez Lv	4.50
9.20	Ar. Oakland, 16th St. Lv	3.50
9.55	Ar. San Francisco Lv	3.10
7.20	Ar. Los Angeles Lv	6.00

(a) — Via P.G. Lines Bus. From Davis.

EQUIPMENT OF TRAINS

Train 11-12, Cascade — (Streamlined, Air Conditioned). Between Portland and San Francisco. Standard sleeping cars with bedrooms, roomettes, lounge and dining car. Non reserved seat chair car.

Great Northern Ry. Bend, Klamath Falls Bieber	SP&S 4	SP&S 2	Northern Pacific Walla Walla	SP&S 3	SP&S 1
	9.45 1.55	3.00 7.00		Lv. Portland Ar Ar. Pasco Lv	5.30 12.45
(Freight Service Only)	Bus	Bus		Bus	Bus
Miles	11.24	2.00	Lv. Pasco Ar Lv. Wallula Ar Ar. Walla Walla Lv	10.10 9.50 8.15	4.15 3.55 3.15
0 Bend	12.25	3.00			
13 Lava		2-25	Northern Pacific	2	26-3
32 La Pine		Daily	West of Pasco	Daily	Daily
52 Crescent					
68 Chemult		3.00	Lv. Portland Ar		5.30
115 Chiloquin		7.00	Ar. Pasco Lv		12.45
133 Algoma		2.40	Lv. Pasco Ar	4.31	8.24
145 Klamath Falls		12.05	Ar. Kennewick Lv	4.16	
162 Merrill		12.52	Ar. Prosser Lv	3.27	
213 Scarface		1.26	Ar. Toppenish Lv	2.53	
225 Lookout		4.35	Ar. Yakima Lv	2.35	6.49
236 Bieber		5.34	Ar. Ellensburg Lv	1.06	5.40

MARK YOUR BAGGAGE

All baggage, whether checked or carried with you, should be plainly marked with your name and permanent address. This will insure prompt recovery should it become lost or go astray. Remove all obsolete labels and addresses.

JEWELRY, CURRENCY, VALUABLE PAPERS and LIQUIDS should not be placed in baggage intended for checking. The railway will not assume responsibility for loss of, or damage to such articles.

BUS	GREYHOUND LINES	BUS
Frequent Service	Spokane	Frequent Service
	Spangle	
	Rosalia	
	Oakesdale	
	Garfield	
	Palouse	
	Pullman	
	Moscow	
	Lewiston	

SAN FRANCISCO — LOS ANGELES — COAST LINE

76	98	M		75	99
9.00	8.25	0	Lv. San Francisco Ar	8.30	7.00
10.15	9.19	47	Ar. San Jose Lv	7.13	5.59
3.08	1.30	248	Ar. San Luis Obispo Lv	2.25	1.56
5.36	3.46	367	Ar. Santa Barbara Lv	11.44	11.34
8.30	6.15	470	Ar. Los Angeles Lv	9.00	9.15

SAN FRANCISCO — LOS ANGELES — VALLEY LINE

52	M		51
7.35	0	Lv. San Francisco Ar	5.45
8.05	4	Lv. Oakland 16th St. Ar	5.15
8.25		Lv. Sacramento Ar	4.35
12.08	205	Lv. Fresno Lv	1.02
2.20	313	Lv. Bakersfield Lv	11.05
7.20	482	Ar. Los Angeles Lv	6.00

UNION PACIFIC RAILROAD

Read Down		Read Up	
18 Daily	106 Daily	17 Daily	105 Daily
10.00	1.00	Lv. Portland Ar	5.00
11.24	2.14	Lv. Hood River Lv	3.17
12.03	2.45	Lv. The Dalles Lv	2.40
3.20	5.01	Lv. Pendleton Lv	11.00
7.25	8.15	Lv. Baker Lv	6.57
10.43		Lv. Payette Lv	5.23
10.55		Lv. Ontario Lv	5.13
11.55	11.55	Lv. Nampa Lv	4.10
12.35	12.20	Lv. Boise Lv	3.35
5.35	4.30	Ar. Pocatello Lv	10.30
6.00	3.00	Ar. Cheyenne Lv	9.20
9.30	9.15	Ar. Denver Lv	6.45
			7.15

SPOKANE, PORTLAND AND SEATTLE RAILWAY SYSTEM

S. P. & S. RY.— OREGON TRUNK RY.— OREGON ELECTRIC RY.— (Subsidiaries of Northern Pacific and Great Northern Railways)



Sleeping, Parlor Car and Reserved Seat Fares

For information only. Subject to change without notice.

BETWEEN	PORTLAND		SPOKANE		BETWEEN	PORTLAND		SPOKANE	
AND	Parlor Car Seat	Lower Berth Standard	Lower Berth Standard		AND	Parlor Car Seat	Lower Berth Standard	Lower Berth Standard	
Billings..... Mont.	\$12.25	\$ 7.90		Minneapolis..... Minn.	\$20.80	\$17.70	
Bingen-Wb. Salmon. Wn.	5.80		Missoula..... Mont.	8.70	5.80	
Bozeman..... Mont.	11.00	6.70		Oakland..... Calif.	11.00	14.05	
Butte..... Mont.	9.95	5.80		Omaha..... Neb.	20.80	17.70	
Camas..... Wn.	5.80		Pasco..... Wn.	2.35	5.80	5.80	
Chicago..... Ill.	24.20	20.80		Portland..... Ore.	5.80	
Denver..... Colo.	17.00	15.90		St. Paul..... Minn.	20.80	17.70	
Duluth..... Minn.	20.80	17.70		San Francisco..... Calif.	11.00	14.05	
Eugene..... Ore.	1.50	6.70	7.05		Seattle..... Wn.	① 1.60	5.80	5.80	
Fargo..... N.D.	18.85	14.70		Spokane..... Wn.	2.95	5.80	
Gardiner..... Mont.	11.75	7.55		Stevenson..... Wn.	5.80	
Glacier Park..... Mont.	9.50	5.80		Tacoma..... Wn.	① 1.20	5.80	5.80	
Great Falls..... Mont.	11.75	7.05		Vancouver..... Wn.	5.80	
Havre..... Mont.	11.75	7.55		Wishram..... Wn.	1.20	5.80	
Helena..... Mont.	9.95	5.80						
Kansas City..... Mo.						
(Via St. Paul, Minn.)	22.20	19.10						
Klamath Falls..... Ore.	3.40	6.70	9.50						
Livingston..... Mont.	11.45	7.05						
Los Angeles..... Calif.	15.80	18.10						
Lyle..... Wn.	5.80						

① Railroad Owned Cars.

Rates For Sleeping Car Accommodations

Where Standard Lower Berth Is	Upper Berth Is	Duplex Roomette Is	ROOM-ETTE For One Person	Duplex Single Room For One Person	BED-ROOM For One or More Persons	Bedroom Suite For Two or More Persons	Compartment For One or More Persons	Drawing Room For One or More Persons
\$ 5.80	\$ 4.40	\$ 6.35	\$ 8.10	\$10.20	\$14.75	\$26.65	\$15.85	\$21.35
6.10	4.60	6.65	8.50	10.65	15.40	27.85	16.55	22.30
6.70	5.15	7.40	9.40	11.65	16.65	30.40	18.05	24.40
7.05	5.40	7.85	9.95	12.20	17.50	31.80	18.95	25.65
7.55	5.65	8.30	10.55	13.05	18.65	34.05	20.10	27.25
7.90	6.10	8.75	11.05	13.75	19.50	35.60	21.00	28.55
8.70	6.65	9.65	12.20	14.90	21.20	39.15	22.90	31.20
9.50	7.15	10.55	13.25	16.25	22.95	42.10	24.85	33.90
9.95	7.55	10.95	13.80	16.90	23.90	43.80	25.85	35.35
10.00	7.50	11.10	13.90	17.00	24.00	44.05	26.00	35.50
11.00	8.40	12.25	15.50	18.65	26.30	48.25	28.45	38.90
11.45	8.65	12.70	16.00	19.25	27.20	49.90	29.50	40.35
11.75	9.00	13.05	16.60	19.95	27.95	51.30	30.25	41.45
12.25	9.25	13.55	17.10	20.45	28.90	53.15	31.45	43.05
14.05	10.70	15.45	19.70	23.45	33.00	60.80	35.75	49.15
14.45	11.05	16.00	20.15	24.10	33.85	62.25	36.65	50.35
14.70	11.35	16.25	20.70	24.70	34.45	63.55	37.30	51.25
15.90	12.10	17.55	22.20	26.40	36.95	68.05	40.15	55.25
17.00	12.90	18.85	23.75	28.10	39.40	72.65	42.80	59.00
17.70	13.55	19.45	24.75	29.25	41.05	75.70	44.50	61.35
18.10	13.70	19.95	25.25	29.85	41.75	77.10	45.40	62.55
18.45	14.00	20.30	25.85	30.45	42.60	78.70	46.30	63.85
18.85	14.30	20.70	26.25	30.95	43.35	80.10	47.20	65.10
19.10	14.55	21.05	26.80	31.60	44.05	81.30	47.85	66.00
20.15	15.35	22.20	28.20	33.20	46.40	85.75	50.40	69.55
20.80	15.90	22.95	29.15	34.45	47.85	88.50	51.95	71.70
22.20	16.85	24.40	31.00	36.40	50.90	94.10	55.30	76.35
23.15	17.65	25.50	32.45	38.10	52.95	97.95	57.60	79.65
24.20	18.40	26.60	33.80	39.50	55.05	101.95	60.05	83.00

INDUSTRIAL LOCATIONS

National concerns continue to come to the Pacific Northwest and are choosing the Portland area as a location for their distribution warehouses. This is not only because of the tremendous growth in population but because of the strategic location for distribution throughout the Pacific Northwest, Alaska, the Hawaiian Islands, and the Orient. In addition, industries requiring lower power costs, better labor, or climatic working conditions, continue to locate throughout the area.

The SP&S RAILWAY SYSTEM owns and serves a great many industrial locations along the Columbia and Willamette Rivers as well as in the cities of both Oregon and Washington. Contact the Industrial Department for information.

H. W. MILLER
General Industrial Agent
American Bank Building
P.O. Box 571
Portland, Oregon 97207

Through sleeping cars not operated in all trains; fare applies for continuous trip via direct connections. A roomette or duplex roomette is a single private room with wash basin and toilet; a bedroom contains lower and upper berth, wardrobe and complete toilet facilities; a compartment is a private room with lower and upper berths, wash basin and toilet; a drawing room has a divan berth in addition.

Exclusive occupancy of two bedrooms en suite or a bedroom and compartment en suite requires 2 adult rail tickets, or their equivalent; for compartment, duplex-roomette, single or double bedroom, one adult ticket between S. P. & S. - N. P. - G. N. and connections; 1-1/10 tickets between certain other lines; for section, one adult ticket for each berth.

Travel Bargain
For Young People!

YOUTH FARE . . .

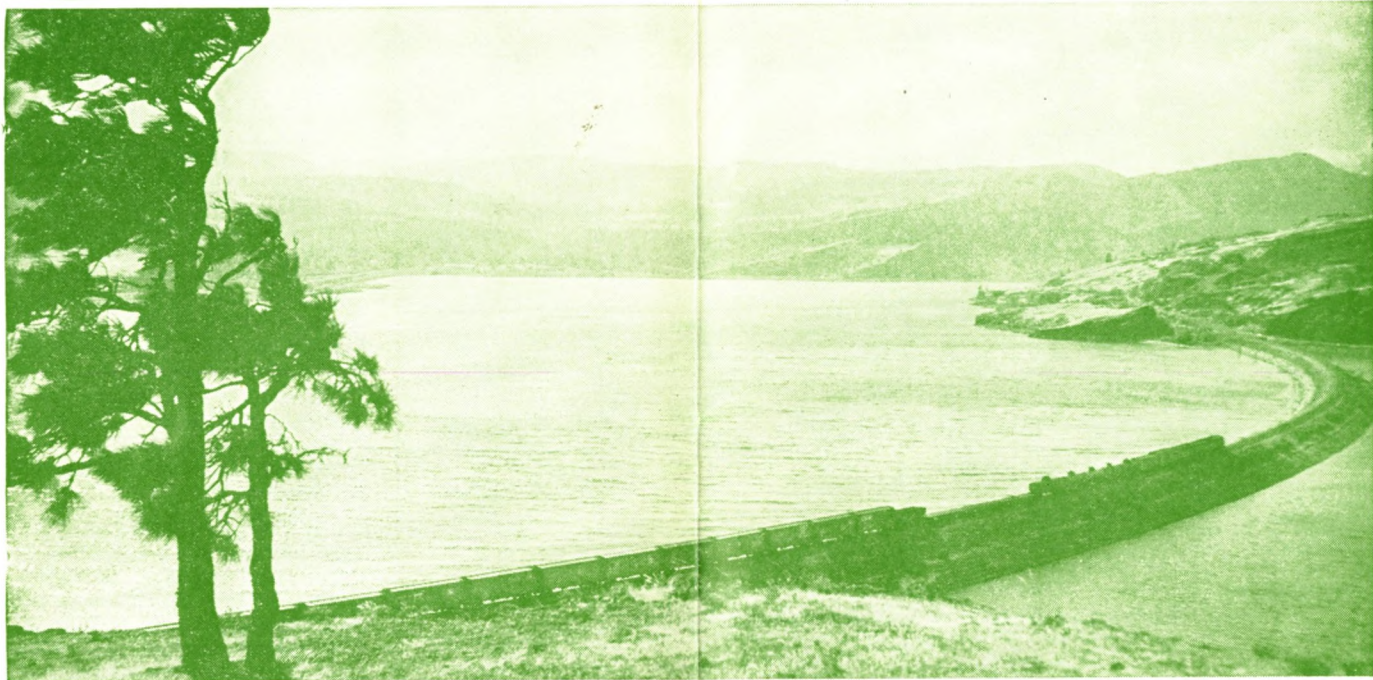
ONE-WAY TRAVEL FOR HALF FARE
ROUND-TRIP TRAVEL FOR ONE-WAY FARE
VALID ON TRAINS 3 AND 4 IN COACH SERVICE

FOR INFORMATION CONSULT ANY
SPOKANE, PORTLAND AND SEATTLE RAILWAY TRAVEL REPRESENTATIVE



SPOKANE, PORTLAND AND SEATTLE RAILWAY SYSTEM

S. P. & S. RY. — OREGON TRUNK RY. — OREGON ELECTRIC RY. — (Subsidiaries of Northern Pacific and Great Northern Railways)



S. P. & S. Ry. Near Bingen-White Salmon, Washington



S. P. & S. Ry. Along The Columbia River Near Lyle, Washington

SPOKANE, PORTLAND AND SEATTLE RAILWAY SYSTEM

S. P. & S. RY. — OREGON TRUNK RY. — OREGON ELECTRIC RY. — (Subsidiaries of Northern Pacific and Great Northern Railways)



Spokane, Portland and Seattle Railway near Lyle, Washington



Spokane, Portland and Seattle Railway with Spokane, Washington in the background

Your Choice of ... Two Daily Trains
Between PORTLAND and SPOKANE

See Page 4 For Detailed Schedules

EASY way
to ship anything

Just phone Railway Express.
Prompt pick-up and fast
delivery within established
vehicle limits.



... safe, swift, sure



SPOKANE, PORTLAND AND SEATTLE RAILWAY SYSTEM

S. P. & S. RY. — OREGON TRUNK RY. — OREGON ELECTRIC RY. — (Subsidiaries of Northern Pacific and Great Northern Railways)

GENERAL INFORMATION

NOTE — This folder has been compiled with care, but may contain errors. Furthermore, it is sometimes necessary to change schedules without notice, trains shown are sometimes unavoidably delayed and connections missed. **We hope none of our patrons will be inconvenienced by any of these causes, but the Railway Company will not be liable therefor.**

ADJUSTMENT OF FARES. In cases of dispute with conductors or agents, passengers should pay fare required, take receipt and communicate with Manager Revenue Accounting, S. P. & S. Ry., Box 571, Portland, Ore. 97207.

REDEMPTION OF TICKETS. Wholly unused tickets will be redeemed by selling agent. Partly used tickets will be redeemed under tariff regulations on application to Manager Revenue Accounting.

STOPOVERS will be allowed at all regular scheduled stops within limits, on application to Conductor.

CHILDREN'S FARES. Children under five years of age, when accompanied by parent or guardian, will be carried free of charge. Children five years of age and under twelve years of age will be charged one-half of the adult fares, **if not mature enough to take care of themselves when traveling alone must not be ticketed unless accompanied by parent or guardian.** Children twelve years of age and over will be charged the adult fare.

MARK YOUR BAGGAGE. All baggage should show name and permanent address of owner. Appropriate gummed labels may be secured from Ticket or Baggage Agent.

HAND BAGGAGE in Pullmans is restricted to what can be conveniently placed in berth or at seat occupied by passenger.

CHECKING CHARGE. 35c per suitcase, trunk or similar size carton.

CHECKED BAGGAGE. Baggage should be checked at least 30 minutes before departure of the train on which it is desired that it move. Every effort is made for prompt handling of baggage, but cannot guarantee forwarding on same train as passenger, nor can time of arrival be guaranteed.

BAGGAGE MAXIMUMS. Ordinarily 150 lbs. is free allowance for each adult ticket. No single piece of baggage exceeding 300 pounds in weight, or exceeding \$2500.00 in value will be checked. Free allowances are subject to tariff stipulation as to contents, weight, value and size.

BAGGAGE INSURANCE. A charge of only thirty cents is made for each hundred dollars value declared above \$100 for baggage checked for each adult passenger and above \$50 for each half-fare ticket. The maximum baggage valuation which may be insured on a single ticket is \$2500.

LIMITED LIABILITY. Excess value of baggage must be declared and paid for at time of checking.

BICYCLES (not motorcycles), baby carriages, dogs and guns are carried in baggage cars subject to tariff regulations.

LOST ARTICLES should be inquired for at the Baggage Office, Union Station, Portland, Oregon, or S. P. & S. Station, Spokane, Washington.

RESPONSIBILITY. No responsibility is assumed for unchecked articles left in stations or cars.

GENERAL OFFICES

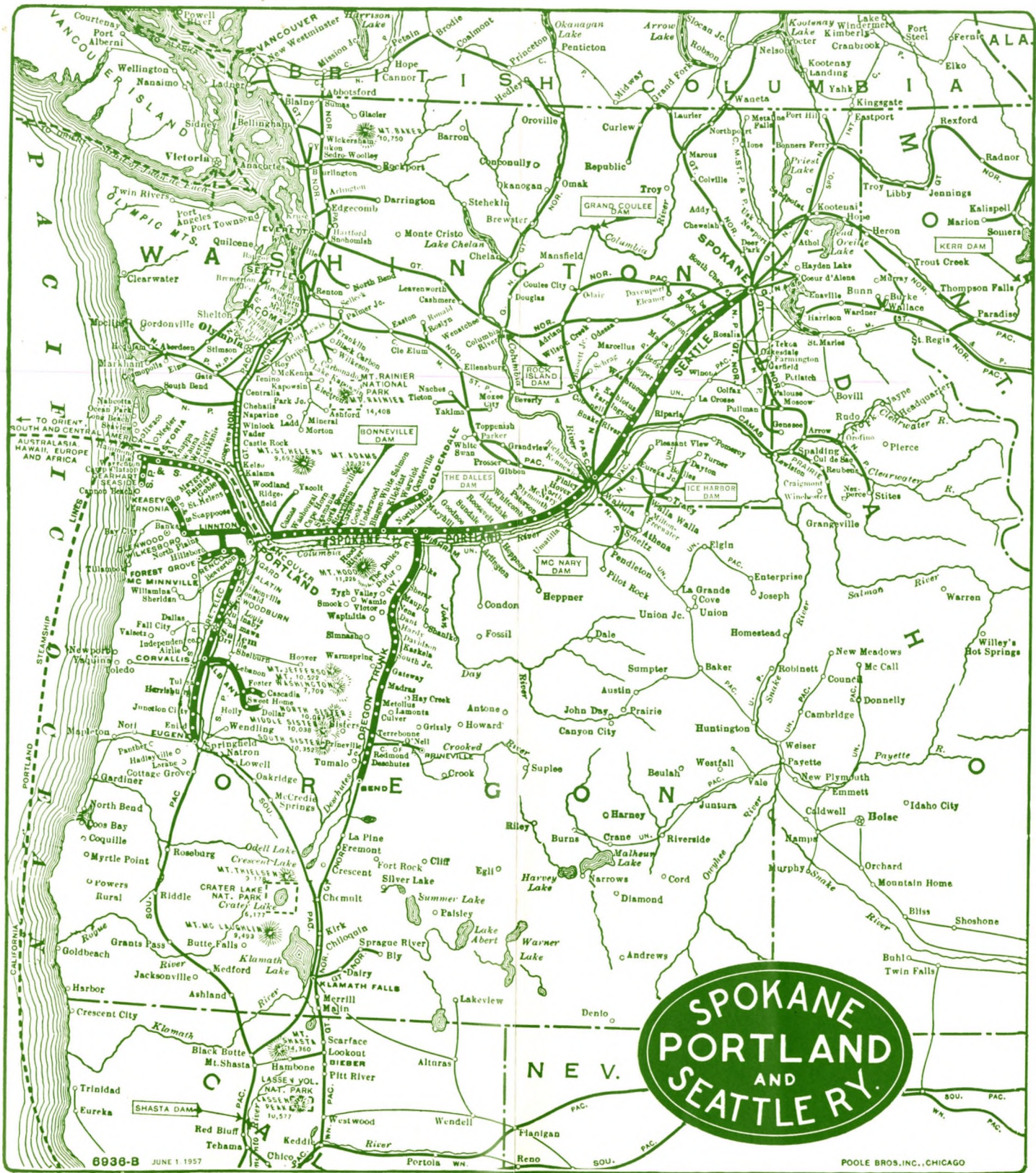
Amer. Bank Bldg., 621 S.W. Morrison St., Box 571, Portland, Oregon 97207
Telephone 228-9111 (Area Code 503)

LOUIS W. MENK	President	St. Paul, Minn. 55101
JOHN M. BUDD	Vice-President	St. Paul, Minn. 55101
N. S. WESTERGARD	Vice-President and General Manager	Portland, Oregon
J. G. MELONAS	Asst. to General Manager	Portland, Oregon
R. A. LAWRENCE	Traffic Manager	Portland, Oregon
F. J. HARRIS	Asst. Traffic Manager	Portland, Oregon
W. J. CROSBIE	General Passenger Agent	Portland, Oregon
H. F. ERZ	General Freight Agent	Portland, Oregon
H. W. MILLER	Gen. Industrial Agent	Portland, Oregon
C. S. JOHNSON	Asst. General Industrial Agent	Portland, Oregon
F. S. BARLOW	Superintendent	Portland, Wash.
L. Z. DANIELS	General Mechanical Supt.	Vancouver, Wash.
H. F. MOY	Secretary and Chief Engineer	Portland, Oregon
W. T. EARLENBAUGH	Treasurer	Portland, Oregon
J. H. COWAN	Purchasing Agent	Portland, Oregon
L. F. LAWSON	Comptroller	Portland, Oregon
W. T. WAHLGREN	Manager Disbursement Accounting	Portland, Oregon
B. CALKINS	Manager Revenue Accounting	Portland, Oregon
S. W. GRAY	Manager Misc. Accounting	Portland, Oregon
T. A. BURKE	Manager Data Processing	Portland, Oregon
W. J. SHEEHAN	General Claim Agent	Portland, Oregon
H. E. HUDSON	Right of Way and Tax Agent	Portland, Oregon
H. WENTZIEN	Superintendent Dining Cars	Portland, Oregon

Representatives

ALBANY, ORE.	D. A. DARGIS (Phone 926-1546 or 926-1547)	Agt. O. E., Ry. Sta.
BEND, ORE.	E. A. KOSKELA (382-3911)	Agt. Passenger Sta.
	G. E. SKINNER (382-2901)	General Agent
EUGENE, ORE.	C. L. JOHNSON (345-8757)	Agt., O. E. Ry. Sta.
	W. Z. MYERS (345-8759)	General Agent
	G. W. WRIGHT	Traveling Frt. & Pass. Agent
LOS ANGELES, CALIF. 90014		
Great Northern Railway,	Room 517, 510 W. 6th St. Bldg., Ph. MA 9-1473	
	T. L. MAY	Sales Manager
Northern Pacific Railway,	610 South Main St., Ph. 627-2321	
	S. A. JEWELL	General Agent
OAKLAND, CALIF. 94612		
Great Northern Railway,	215 Financial Center, Ph. 832-7672	
	OWEN FREEMAN	Sales Manager
Northern Pacific Railway,	611 Central Building, Ph. 451-8717	
	J. V. KRISMAN	General Agent
PORTLAND, ORE.	A. T. MERCER	GAPD (SP&S-NP Rys.)
	439 S. W. 6th Ave., Telephone 227-0415	
	K. C. CLAUSON	GAPD (SP&S-GN Rys.)
	607 S.W. Washington St., Telephone 223-7273	
	R. A. J. WESTLAKE, Mail, Baggage and Ticket	
	Agt., Union Station, Foot of N.W. 6th Ave., Telephone 227-3421	
	J. H. TAYLOR	General Agent, Freight Dept.
	T. J. MARTIN	Trav. Frt. & Pass. Agent
	F. J. KIRCHHOFF	Trav. Frt. & Pass. Agent
	R. G. BOGESS	City Freight Agent
	D. H. CARLSON	City Freight Agent
	L. L. COX	City Freight Agent
	J. D. SURLÉS	Local Freight Agent, N.W. 11th and Hoyt, Phone 228-9111.
SACRAMENTO, CALIF. 95814	R. L. LAMB, Sales Mgr., G. N. Ry., 223 Forum Bldg.	
SALEM, OREGON	P. J. MARTELL (363-3120) Agt., O. E. Ry. Fr. Dep.	
SAN FRANCISCO, CALIF. 94105		
Northern Pacific Railway,	681 Market St., Phone 781-1078	General Agent
Great Northern Railway,	681 Market St., Ph. Sutter 1-6051; 1-6052	
	C. G. ALEXANDER	Gen. Agent Passenger Dept.
SPOKANE, WASH. 99204		
	A. H. STUCKERT	General Agent
	D. W. MORRISON	Trav. Frt. & Pass. Agent
	410 Columbia Bldg., Ph. MAdison 4-4238	
	C. M. KOENIGS	Gen. Agent Passenger Dept.
	G. N. Station, Phone MA 4-5141.	
	W. J. RIDDELL	General Agent
	W. 221 — First Avenue	
	L. M. CARROLL	Ticket Agent, Gt. Nor. Ry. Sta.
VANCOUVER, WASH.	K. M. ELLER, Agt. (Ph. 693-2561), SP&S R. Sta.	
	C. M. WAGNER (Ph. 694-5151), Pass Sta.	

Agents of the Great Northern and Northern Pacific Rys. throughout the United States are the direct representatives of the Spokane, Portland and Seattle Railway Co., Oregon Trunk Railway and Oregon Electric Railway Co.



**SPOKANE
PORTLAND
AND
SEATTLE RY.**



Spokane, Portland and Seattle Railway Passing McNary Dam on the Columbia River

