

# Take

## THE ROUTE OF PHOEBE SNOW

### For Your Vacation

**GO BY TRAIN . . .** you'll get more pleasure from your vacation! The Lackawanna will take you where you want to go and bring you back — *speedily and safely.*

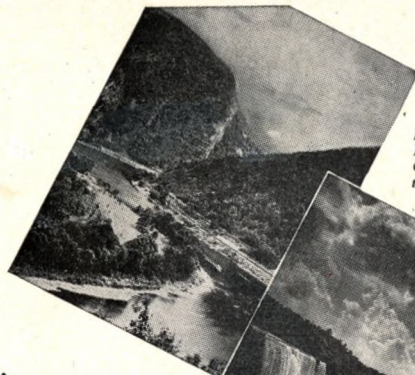
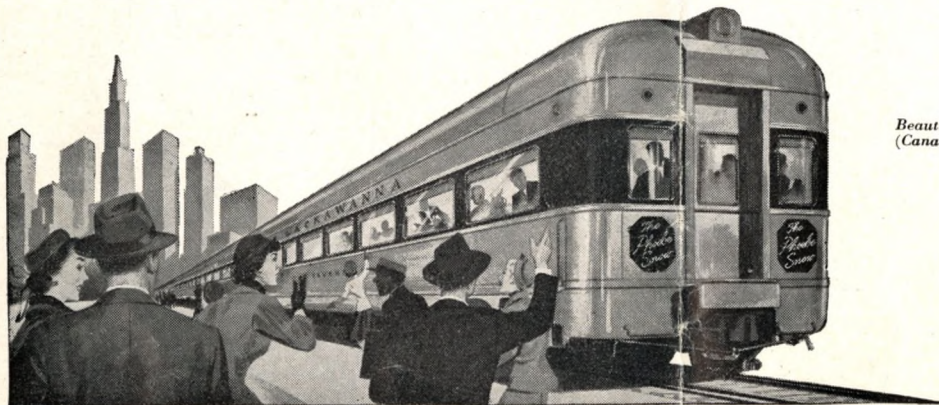
Rail travel is *convenient, clean, and luxurious.* It's cool, comfortable and relaxing . . . *especially* in the new de luxe streamlined air-conditioned coaches of THE PHOEBE SNOW. Through wide panoramic windows you may view some of America's most picturesque scenery. Adjustable reclining seats, spacious luggage racks, fluorescent lights, smartly appointed lounge rooms are yours to enjoy *at no extra cost.*

For your enjoyment, too, the attractive new Observation-Lounge car, *open to all passengers,* with a Tavern section and refreshment bar

. . . the spacious new Diner . . . and, for through travel New York to Chicago, the new all-private Roomette and Bedroom Sleeping Car and the Reclining Seat Coach.

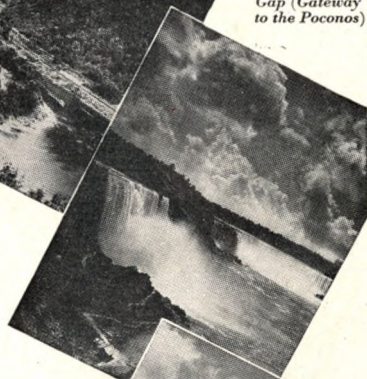
There are many *choice vacation resorts* reached via Lackawanna. Whether your destination is Delaware Water Gap or the nearby Poconos, The Finger Lakes of New York, Niagara Falls, The Great Lakes, Canada . . . or the Golden West, stop-overs are permitted on practically all tickets at any point en route within limit of the ticket.

Convenient connections are made on the Route of Phoebe Snow at Buffalo for NIAGARA FALLS, and for GREAT LAKES CRUISE steamers; and at Chicago for trains to the NATIONAL PARKS, CANADIAN ROCKIES, and PACIFIC COAST resorts.



Picturesque Delaware Water Gap (Gateway to the Poconos)

Majestic Niagara Falls (Niagara, New York)



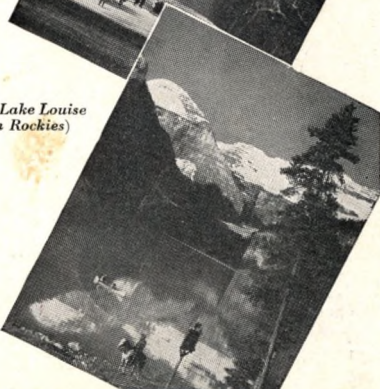
Scenic Grand Canyon (Grand Canyon National Park)



Spectacular Old Faithful (Yellowstone National Park)



Beautiful Lake Louise (Canadian Rockies)



# Lackawanna Railroad



## The Route of Phoebe Snow

CONDENSED EQUIPMENT OF TRAINS—PARLOR AND SLEEPING CAR LINES, DINING CAR SERVICE—REGULARLY ASSIGNED CARS ARE AIR-CONDITIONED

### WESTWARD

#### The Phoebe Snow No. 3—Daily

(A Streamlined Train)  
(Via Nickel Plate No. 5)

- SLEEPING CAR  
New York to Chicago (10 Roomettes—6 Double Bedrooms) (Car L-30)
- TAVERN LOUNGE CAR (D. L. & W.)  
New York to Buffalo. (Open to all passengers)
- DINING CAR  
New York to Buffalo
- BUFFET LOUNGE CAR  
Binghamton to Syracuse—In No. 1903 from Binghamton
- CLUB-DINER-LOUNGE CAR  
Buffalo to Chicago
- RECLINING SEAT COACHES  
New York to Buffalo  
Binghamton to Syracuse—In No. 1903 from Binghamton  
New York to Chicago

#### The Twilight No. 5—Daily (Diesel-Powered)

(Via New York Central No. 33-75)

- SLEEPING CAR  
New York to Detroit (10 Sec.—3 Double Bedrooms) (Car L-50) (Daily except Saturday)
- BUFFET LOUNGE CAR  
New York to Binghamton
- PARLOR CAR (D. L. & W.)  
New York to Corning (Drawing Room) (Car 51)
- DINING CAR  
New York to Elmira  
Detroit to Chicago
- RECLINING SEAT COACHES  
New York to Buffalo
- COACHES  
Buffalo to Detroit
- RECLINING SEAT COACHES  
Detroit to Chicago

#### The Westerner No. 7—Daily (Diesel-Powered)

(Via Nickel Plate No. 7)

- SLEEPING CARS  
New York to Chicago (10 Roomettes—6 Double Bedrooms) (Car L-70)  
New York to Buffalo (10 Roomettes—6 Double Bedrooms) (Car 71)—May be occupied until 7.00 A.M.
- BUFFET LOUNGE CAR  
New York to Scranton
- DINER LOUNGE CAR  
Buffalo to Chicago
- RECLINING SEAT COACHES  
New York to Chicago  
Buffalo to Chicago  
New York to Buffalo

#### The Owl No. 15—Daily (Diesel-Powered)

- SLEEPING CARS  
New York to Elmira (10 Roomettes—6 Double Bedrooms) (Car 150)  
New York to Syracuse (10 Sec.—D.R.—2 Double Bedrooms) (Car 152)—(Daily except Saturday Night)  
In No. 1915 from Binghamton  
New York to Binghamton (10 Roomettes—6 Double Bedrooms) (Car 151)—May be occupied until 7.00 A.M.  
New York to Scranton (12 Sec.—D.R.) (Car 153)—(Daily except Saturday night)  
May be occupied until 7.00 A.M.  
Sleeping cars open at Hoboken for occupancy at 8.30 P.M.
- DINER LOUNGE CAR  
Binghamton to Buffalo  
Binghamton to Syracuse—In No. 1915 from Binghamton
- RECLINING SEAT COACHES  
New York to Buffalo  
Binghamton to Syracuse

### WESTWARD

#### Interstate Express No. 1301—Daily

(Via B. & O. Reading Co. and C.R.R. of Pa.)

- SLEEPING CAR  
Philadelphia to Syracuse (12 Sec.—D.R.) (Car 301)  
—In No. 1915 from Binghamton  
May be occupied at 9.00 P.M.
- PARLOR-DINING-LOUNGE CAR  
Washington to Philadelphia, via B. & O. R.R.
- DINER LOUNGE CAR  
Binghamton to Syracuse—In No. 1915 from Binghamton
- Binghamton to Buffalo—In No. 15
- RECLINING SEAT COACHES  
Washington to Philadelphia—In B. & O. No. 36 from Washington
- COACHES  
Philadelphia to Scranton—In Reading Co. No. 301 from Philadelphia; non air-conditioned
- RECLINING SEAT COACHES  
Binghamton to Syracuse—In No. 1915 from Binghamton. No coaches Scranton to Binghamton  
Binghamton to Buffalo—In No. 15 from Binghamton

### EASTWARD

#### Pocono Express No. 2—Daily

(Diesel-Powered)

- SLEEPING CAR  
Detroit to New York (10 Sec.—3 Double Bedrooms) (Car 440) (Daily except Saturday) via New York Central No. 44. Car may be occupied at Buffalo at 11.00 P.M.
- SLEEPING CAR  
Buffalo to New York (10 Sec.—3 Double Bedrooms) (Car 440) (Daily except Sat. night—Sun. morning) from N. Y. C. No. 44. Car may be occupied at Buffalo at 11.00 P.M.
- DINING CAR  
Elmira to New York
- RECLINING SEAT COACHES  
Buffalo to New York

#### The Phoebe Snow No. 6—Daily (A Streamlined Train)

- TAVERN LOUNGE CAR (D. L. & W.)  
Buffalo to New York (Open to all passengers)
- PARLOR CAR (D. L. & W.)  
Buffalo to New York (Drawing Room) (Car 61)
- DINING CAR  
Buffalo to New York
- BUFFET LOUNGE CAR  
Syracuse to Binghamton—In No. 1906 from Syracuse
- RECLINING SEAT COACHES  
Buffalo to New York  
Syracuse to Binghamton—In No. 1906 from Syracuse

#### The New Yorker No. 8—Daily (Diesel-Powered)

(Via Nickel Plate No. 8)

- SLEEPING CARS  
Chicago to New York (10 Roomettes—6 Double Bedrooms) (Car C-80)  
Buffalo to New York (10 Roomettes—6 Double Bedrooms) (Car 83)—Open for occupancy at 8.00 P.M.  
Elmira to New York (10 Roomettes—6 Double Bedrooms) (Car 84)  
Open for occupancy at 8.30 P.M.  
Syracuse to New York (10 Sec.—D.R.—2 Double Bedrooms) (Car 85)—(Daily except Saturday night)  
In 1910 to Binghamton.  
Sleepers may be occupied at Hoboken until 7.00 A.M.
- DINER LOUNGE CAR  
Chicago to Buffalo
- BUFFET LOUNGE CAR  
Syracuse to Binghamton—In No. 1910 from Syracuse  
—Open for service 8.00 P.M.
- RECLINING SEAT COACHES  
Chicago to New York  
Buffalo to New York

### EASTWARD

#### New York Mail No. 10—Daily

(Diesel-Powered)

(Via Nickel Plate No. 6)

#### SLEEPING CARS

- Chicago to New York (10 Roomettes—6 Double Bedrooms) (Car C-60)  
Sleeper may be occupied at Hoboken until 7.00 A.M.  
Scranton to New York (12 Sec.—D.R.) (Car 102) (Daily except Saturday night)  
Binghamton to New York (10 Roomettes—6 Double Bedrooms) (Car 100)  
Binghamton and Scranton Sleepers are open for occupancy at 8.30 P.M. and may be occupied at Hoboken until 7.00 A.M.

#### CLUB-DINER-LOUNGE CAR

Chicago to Buffalo

#### BUFFET LOUNGE CAR

Buffalo to Binghamton

#### RECLINING SEAT COACHES

- Chicago to Buffalo  
Buffalo to New York  
Syracuse to Binghamton—In No. 1910 from Syracuse

#### Merchants Express No. 26—Daily Except Sunday and Major Holidays

#### DINER LOUNGE CAR

Scranton to New York

#### RECLINING SEAT COACHES

Scranton to New York

#### Interstate Express No. 1306—Daily

(Via C.R.R. of Pa., Reading Co.)

#### SLEEPING CAR

- Syracuse to Philadelphia (12 Sec.—D.R.) (Car 130)  
—In No. 1910 from Syracuse

#### BUFFET LOUNGE CAR

Syracuse to Binghamton—Open for service 8.00 P.M.

#### COACHES

Scranton to Philadelphia—In C.R.R. of Pa. No. 306 from Scranton; non air-conditioned

#### RECLINING SEAT COACHES

Syracuse to Binghamton—In No. 1910 from Syracuse  
Buffalo to Binghamton—In No. 10 from Buffalo  
No coaches Binghamton to Scranton

#### No. 44—Daily

#### BUFFET LOUNGE CAR

Binghamton to New York

#### RECLINING SEAT COACHES

Binghamton to New York

## CONDENSED TABLE OF CONNECTING TRAINS

NEW YORK AND BUFFALO, CLEVELAND, DETROIT, CHICAGO AND THE WEST  
(For Through Car Service, See Page 2)

TABLE 1 WESTWARD—Read Down					TABLE 2 EASTWARD—Read Down				
	15 Daily	3 Daily	5 Daily	7 Daily		12 Daily	Daily	Daily	Daily
	PM	AM	PM	PM		AM	PM	PM	PM
<b>LACKAWANNA RAILROAD</b>									
<b>New York</b>									
Barclay St. . . . . (E.T.) Lv	11 43	9 00	3 28	7 00					
Christopher St. † . . . . (E.T.) Lv	11 43	9 03	3 32	7 00					
Hoboken . . . . . (E.T.) Lv	12 05	9 30	3 50	7 30					
Newark . . . . . (E.T.) Lv		9 43	4 03	7 44					
Brick Church . . . . . (E.T.) Lv		9 50	4 10	7 51					
Dover . . . . . (E.T.) Lv		10 28	4 52	8 32					
Seranton . . . . . (E.T.) Lv	3 55	12 45	7 10	10 51					
Binghamton . . . . . (E.T.) Lv	6 05	1 57	8 29	12 05					
Cortland . . . . . (E.T.) Ar	8 10	3 10							
Syracuse . . . . . (E.T.) Ar	9 15	4 10							
Norwich (Via Bus See Table 8) . . . . (E.T.) Ar	7 35	▲							
Utica (Via Bus See Table 8) . . . . . (E.T.) Ar	9 05	▲							
Ithaca (Via Bus See Table 13) . . . . . (E.T.) Ar	8 45	3 45							
Elmira . . . . . (E.T.) Lv	7 55	3 09	10 05	1 14					
Buffalo . . . . . (E.T.) Ar	11 30	6 45	1 05	3 45					
<b>NICKEL PLATE</b>									
Buffalo (Lackawanna Terminal) . . . . (E.T.) Lv		6 30	4 15						
Erie . . . . . (E.T.) Ar		8 13	5 43						
Ashtabula . . . . . (E.T.) Ar		9 15	6 37						
East Cleveland (Superior Ave.) . . . . (E.T.) Ar		10 10	7 30						
Cleveland (Union Terminal) . . . . . (E.T.) Ar		10 30	7 45						
Fort Wayne . . . . . (E.T.) Ar		2 20	10 57						
Chicago (La Salle St. Sta.) . . . . . (C.T.) Ar		6 40	2 40						
<b>NEW YORK CENTRAL SYSTEM</b>									
Buffalo (Cent. Term.) . . . . . (E.T.) Lv		39	33-375	335					
Buffalo (Terrace Sta.) . . . . . (E.T.) Lv		9 55	2 35	8 20					
Detroit . . . . . (E.T.) Ar		1 40	7 20	1 00					
Ann Arbor . . . . . (E.T.) Ar			9 13						
Jackson . . . . . (E.T.) Ar		3 35	9 53						
Battle Creek . . . . . (E.T.) Ar		4 30	10 40						
Kalamazoo . . . . . (E.T.) Ar		5 05	11 05						
Chicago (Central Station) . . . . . (C.T.) Ar		8 10	12 45						
<b>NEW YORK CENTRAL SYSTEM—</b>									
<b>CAN. PAC. R. R.</b>									
Buffalo (Cent. Term.) . . . . . (E.T.) Lv	379		371	8 40					
Buffalo (Terrace Sta.) . . . . . (E.T.) Lv	2 10		5 00	8 40					
Buffalo (Terrace Sta.) . . . . . (E.T.) Lv	2 21			8 51					
Toronto . . . . . (C.P.R.) (E.T.) Ar	5 20		8 05	11 55					
<b>NEW YORK CENTRAL SYSTEM</b>									
Buffalo (Cent. Term.) . . . . . (E.T.) Lv	43	5	19	35					
Cleveland . . . . . (E.T.) Ar	1 14	8 15	2 27	7 50					
Toledo . . . . . (E.T.) Ar	5 20	12 13	5 47	11 05					
Chicago (La Salle St. Sta.) . . . . . (C.T.) Ar	7 57	2 55	8 15	1 30					
	12 30	6 55	11 59	5 00					
<b>NEW YORK CENTRAL SYSTEM</b>									
Buffalo (Cent. Term.) . . . . . (E.T.) Lv		15	35-433						
Cleveland . . . . . (E.T.) Lv		11 59	7 50						
Cincinnati . . . . . (E.T.) Ar			12 30						
		8 35	6 45						
<b>NEW YORK CENTRAL SYSTEM</b>									
Buffalo (Cent. Term.) . . . . . (E.T.) Lv	43-427	5-41	11	35-407					
Cleveland . . . . . (E.T.) Lv	1 14	8 15	2 57	7 50					
Indianapolis . . . . . (C.T.) Ar	8 20	2 13	6 15	12 20					
St. Louis . . . . . (C.T.) Ar	1 35	6 30	10 50	5 35					
	7 50	11 20	3 50	11 00					
	AM	AM	PM	PM					

### EXPLANATION OF REFERENCE MARKS

A.M., light type. P.M. heavy type. E.T.—Eastern Time. C.T.—Central Time. † Through Sleeper on N.Y.C. No. 44 from Detroit runs on D. L. & W. No. 2 from Buffalo—passengers desiring to connect with D. L. & W. No. 8 from Buffalo should transfer at Terrace Station. ▲Chenango Valley Transit Lines bus will wait at Binghamton 15 minutes for connection with train No. 3. Next bus leaves Binghamton at 4.30 P.M., E.S.T.; notify train conductor bus connection is desired. (See Table 8, Page 10.) ★Leaves La Salle Street Station in Chicago. † Christopher St. Ferry will not run on Saturdays, Sundays or Major Holidays. (See Hol. Note P. 5.)

### PRINCIPAL TICKET, INFORMATION AND PULLMAN OFFICES

	Telephone		Telephone
<b>NEW YORK</b>	General Eastern Passenger Agent's Office 500 5th Ave. (at 42nd Street) Rm. 842 Railroad Ticket Offices: 3 West 47th Street (near Fifth Avenue) 17 John Street (near Broadway) *Evenings, Saturdays, Sundays and Legal Holidays, phone Barclay St. (foot Barclay Street) Christopher Street (near West 10th St.)	Lackawanna 4-0234* PLaza 7-5560-1* Cortlandt 7-0820-1* Barclay 7-2500 Barclay 7-2500 Barclay 7-2500	Market 3-3440 Humboldt 2-2100 Sherwood 2-1609 Cleveland 2488 Washington 4800
<b>HOBOKEN</b>	Lackawanna Terminal	Hoboken 3-2000	Wabash 3443
<b>NEWARK</b>			City Ticket Office Griffith Bldg., 605 Broad St., Rms. 502-503 Evenings, Saturdays, Sundays and Legal Hols., phone
<b>PATERSON</b>			Lackawanna Station 220 Marshall St. (near Main St.)
<b>BUFFALO</b>			City Ticket Office 11 W. Genesee St. Evenings, Saturdays, Sundays and Legal Holidays, phone
<b>CHICAGO</b>			City Passenger Agent's Office 327 South LaSalle Street

# NEW YORK TO STROUDSBURG, POCONO MOUNTAIN POINTS AND SCRANTON

For condensed time and equipment of trains see pages 2 and 3.

Miles	TABLE 3 WESTWARD—Read Down	15 Daily	47 Daily	1109 See Note	611 911 Daily	21 Sat. Only	3 Daily	11 Daily Ex. Sun. & Hcl.	1119 See Note	1121 Sat. Only	1041 Ex. Sat. Sun. & Hol.	929 See Note	635 Ex. Sat. Sun. & Hol.	931 Sat. Only	5 Daily	1129 1131 1073 Daily	649 941 Daily	7 Daily	9 Sat. Nite Only
NEW YORK	Hudson Tubes—(Fare 15c) 33rd St. & 6th Ave. . . . . Lv	PM 11 36	AM 6 00	AM	AM	AM 8 42	AM 9 03	PM 2 1	PM	PM	PM	PM	PM	PM	PM 3 23	PM	PM	PM 7 03	PM 9 03
	Hudson Term. Bldg., Cortlandt St. D. L. & W. Ferries	11 47	6 11			8 41	9 09	2 13							3 28			7 12	9 02
	Barclay St.	11 43	5 58			8 45	9 00	2 15							3 32			7 00	8 45
	Christopher St.		6 18				9 03	2 15							3 32			7 00	8 45
1.0	HOBOKEN (Hudson River) . . . . . Lv	12 05	6 30			9 05	9 30	2 35						3 50			7 30	9 25	
8.8	Newark (Passaic River)																		
10.0	Roseville Ave.																		
10.6	Grove St.																		
11.0	East Orange																		
11.6	Brick Church																		
12.5	Orange																		
13.2	Highland Ave.																		
14.1	Mountain Station																		
14.9	South Orange																		
16.2	Maplewood																		
17.8	Millburn																		
18.8	Short Hills																		
21.1	Summit																		
24.5	Chatham																		
26.5	Madison																		
28.7	Convent																		
30.8	Morristown																		
33.0	Morris Plains																		
37.3	Denville																		
39.1	Dover	Ar																	
8.6	Kingsland	Lv																	
9.2	Lyndhurst																		
10.3	Delawanna																		
11.6	Passaic																		
13.2	Athens																		
16.1	Paterson (Passaic River)																		
21.5	Mountain View																		
23.9	Lincoln Park																		
26.1	Towaco																		
30.2	Boonton																		
32.2	Mountain Lakes																		
34.9	Denville																		
39.1	Dover	Ar																	
39.1	Dover	Lv	7 43																
61.7	Johnsonburg																		
65.8	Blairtown																		
78.2	Delaware Water Gap (Delaware River)																		
82.6	Stroudsburg &	Ar	1 52	8 57															
82.6	East Stroudsburg	Lv	1 57	9 02															
90.2	Henryville																		
95.6	Cresco (Station for Skytop, Buck Hill Falls, Canadensis, Mountaintop, So. Sterling, Paradise Falls)		f 9 27																
101.3	Mount Pocono		f 9 41																
103.6	Pocono Summit (Station for Pocono Mtn., Pocono Crest, and Split Rock Lodge)		f 9 47																
108.6	Tobyhanna		f 9 55																
113.9	Gouldsboro		f 10 02																
121.5	Moscov		f 10 15																
134.1	Scranton	Ar	3 27	10 35															
	Wilkes-Barre (Laurel Line)	Ar	4 40	11 40															
			AM	AM	AM	AM	PM	PM	PM	PM	PM	PM	PM	PM	PM	PM	PM	PM	AM

### How to Reach Lackawanna Terminal, Hoboken

LACKAWANNA TERMINAL, Hoboken, N. J., is conveniently reached via ferry from BARCLAY STREET and CHRISTOPHER STREET (West 10th Street) New York; or via HUDSON TUBES: 33rd Street and 6th Avenue (uptown) and Hudson Terminal Building (Cortlandt Street), (downtown), New York; also

reached via Public Service Bus No. 63 from PUBLIC SERVICE BUS TERMINAL at 260 West 42nd Street, New York (between 7th and 8th Avenues).

These three routes offer fast, frequent, and convenient service between Greater New York and Lackawanna Terminal, Hoboken, N. J.

# SCRANTON TO BINGHAMTON, SYRACUSE, ELMIRA AND BUFFALO

For condensed time and equipment of trains see pages 2 and 3.

Miles	TABLE 4 WESTWARD—Read Down		15	1301	47	3	5	7		
			Daily	Daily	Daily	Daily	Daily	Daily		
			AM	AM	AM	AM	PM	PM		
Willkes-Barre (Laurel Line).....Lv			2 15		9 45	11 45	5 45 16 15	9 45		
134.1 Scranton.....Lv			3 55		10 50	12 45	7 10	10 51		
141.5 Clarks Summit.....					f11 11					
145.0 Dalton.....					f11 18					
147.0 LaPlume.....					f11 23					
153.1 Nicholson (Tunkhannock Viaduct)					f11 36					
158.6 Foster.....					f11 45					
162.9 Kingsley.....					f11 51					
172.6 New Milford.....			4 51		f12 15		7 53			
178.5 Hallstead.....			5 00		f12 24					
192.7 Binghamton (Susquehanna River).....Ar			5 20	5 42	1 00	1 57	8 14	11 53		
235.7 Cortland.....Ar			8 10	8 10		3 10				
272.1 Syracuse.....Ar			9 15	9 15		4 10				
287.8 Utica (Via Bus) See Table 8.....Ar			9 05	9 05		▲				
192.7 Binghamton (Susquehanna River).....Lv			6 05			1 57	8 29	12 05		
200.7 Vestal Endicott.....			6 22			2 08	8 41			
206.6 Apalachin.....			16 28							
213.4 Owego (Susquehanna River).....			6 47			2 26	9 04	12 29		
247.4 Ithaca (Via Bus) See Table 13.....Ar			8 45	8 45		3 45				
221.7 Nichols.....			7 02							
232.0 Waverly (Station for Sayre—Athens).....			7 20			2 46	9 28	12 50		
249.7 Elmira.....			7 38			3 09	9 45	1 08		
			7 55			3 09	10 05	1 14		
259.5 Big Flats.....										
267.7 Corning (Chemung River).....			8 22			3 30	10 30	1 33		
276.7 Campbell.....										
286.6 Bath (Cohocton River).....			8 50			3 51	10 57			
294.2 Avoca.....			9 00							
302.0 Cohocton.....			9 14							
306.4 Atlanta.....			9 22							
312.3 Wayland.....			19 33							
319.5 Dansville.....			9 47			4 24	11 32			
326.8 Groveland.....			10 11							
333.7 Mount Morris (Genesee River).....			10 11			4 41	11 51	2 36		
340.3 Greigsville.....			10 23							
351.1 B. & O. Jct.....										
355.0 East Bethany.....			f10 42							
384.2 Lancaster.....										
396.2 Buffalo.....Ar			11 30			5 45	1 05	3 45		
For Connections West of Buffalo See Table 1, Page 3.			AM	AM	PM	PM	AM	AM		

## EXPLANATION OF REFERENCE MARKS

For Tables 3 and 4.

†—Daily except Sunday.

‡—Sunday only.

A.M. time light type.

P.M. time heavy type.

f—Stops on advance notice to agent or conductor.

j—Stops on notice to conductor to discharge passengers.

m—Stops Friday, Sunday, and Holidays only at Cresco 6:03 P.M., Pocono Summit 6:20 P.M. Friday stops on notice to conductor to discharge passengers from Stroudsburg and east, and on advance notice to agent to receive passengers for Scranton and west; Sunday and Holidays a regular stop. (See Holiday Note.)

t—Stops Jan. 1, May 30, July 4, Sept. 4, Nov. 30 and Dec. 25 only at Delaware Water Gap 5:34 P.M., Henryville 5:52 P.M., and Mt. Pocono 6:16 P.M.

w—Stops Daily at Pocono Summit 10:02 P.M., on notice to conductor to discharge passengers from Dover and east and on advance notice to agent to receive passengers for Buffalo and west.

x—Stops Sundays and Holidays only (See Holiday Note.) at Tobyhanna 6:26 P.M., Gouldsboro 6:32 P.M., Moscow 6:40 P.M.

z—Stops regularly to receive passengers.

▲—Chenango Valley Transit Lines bus between Binghamton and Utica will wait at Binghamton 15 minutes for connection with train No. 3. Next bus leaves Binghamton at 4:30 P.M. E.S.T.; notify train conductor bus connection is desired. (See Table 8, Page 10.)

♦—Christopher St. Ferry will not run on Saturdays, Sundays or Major Holidays. (See Hol. Note.) The daily checking and delivery of baggage at Christopher Street, New York Station is discontinued. Baggage may be checked or delivered daily at Barclay Street, New York, Station.

Holidays—The term holidays used in these timetables applies to New Year's Day, Memorial Day, Independence Day, Labor Day, Thanksgiving, and Christmas Day.

## THE PHOEBE SNOW

For a DAYLIGHT TRIP between NEW YORK and BUFFALO

**THE OBSERVATION LOUNGE CAR**, open to all passengers, is of the latest design and equipped with a refreshment bar and other conveniences that add to the pleasure of your trip aboard THE PHOEBE SNOW.

**THE NEW SPACIOUS DINING CAR** offers a setting of beauty . . . for the enjoyment of appetizing meals served by courteous, carefully-trained and experienced personnel.

**THE NEW STREAMLINED COACHES** are equipped with sponge-rubber cushioned seats. At the touch of your hand they

recline to any desired position, so that you can read . . . rest . . . or enjoy through wide panoramic windows some of America's most idyllic scenery east of the Rockies. Convenient, spacious overhead racks are provided for your luggage. New travel comfort and enjoyment await you on THE PHOEBE SNOW.

For PULLMAN TRAVEL New York to Chicago, THE PHOEBE SNOW provides a modern, all-private-room sleeping car with 10 roomettes for single occupancy and 6 double bedrooms—newest Pullman accommodations to assure you comfort and a restful night's sleep.

# BUFFALO, ELMIRA, SYRACUSE AND BINGHAMTON TO NEW YORK

For condensed time and equipment of trains see pages 2 and 3.

Miles	TABLE 5 EASTWARD—Read Down		2	6	NB	10	1306	8
			Daily	Daily	44	Daily	Daily	Daily
		AM	AM	PM	PM	PM	PM	PM
For connections from the West see Table 2, page 3.								
0.0	Buffalo.....Lv	3 30	9 15		4 45		10 00	
12.0	Lancaster.....				5 03			
41.2	East Bethany.....				5 29			
45.1	B & O Jet.....				5 35			
55.9	Greigsville.....							
62.5	Mount Morris (Genesee River).....	4 35	10 14		6 05		11 03	
69.4	Groveland.....				6 15			
76.7	Dansville.....	4 54	10 31		6 40		11 20	
83.9	Wayland.....				6 55			
89.8	Atlanta.....				7 11			
94.2	Cohocton.....				7 22			
102.0	Avoca.....				7 43		11 56	
109.6	Bath (Cohocton River).....	5 40	11 04					
119.5	Campbell.....							
128.5	Corning (Chemung River).....	6 10	11 25		8 10		12 15	
136.7	Big Flats.....							
146.5	Elmira.....Ar	6 35	11 49		8 29		12 33	
164.2	Waverly (Sta. for Sayre-Athens).....	7 01	12 09		8 55		12 58	
174.5	Nichols.....	7 13			9 18			
					9 30			
216.8	Ithaca (Via Bus).....Lv		10 25					
	See Table 13							
182.8	Owego (Susquehanna River)Lv	7 35	12 32		9 45			
189.6	Apalachin.....	e7 46						
195.5	Vestal.....	7 58	12 48		10 08			
203.5	Endicott.....							
	Binghamton (Susq. River)..Ar	8 11	1 08		10 23		1 38	
	Utica (Via Bus).....Lv		9 30		4 55	4 55		
	See Table 8							
	Syracuse.....Lv		10 25		8 20	8 20	8 20	
	Cortland.....Lv		11 33		9 25	9 25	9 25	
203.5	Binghamton (Susq. River)..Lv	8 23	1 08	4 45	10 59	11 20	1 45	
217.7	Hallstead.....	e8 38						
223.6	New Milford.....	8 49						
233.3	Kingsley.....							
237.6	Foster.....							
243.1	Nicholson (Tunkhannock Viaduct).....							
249.2	LaPlume.....							
251.2	Dalton.....							
254.7	Clarks Summit.....	e9 25						
262.1	Scranton.....Ar	9 38	2 15	w5 50	12 15		2 52	
	Wilkes-Barre.....Ar	10 40	13 10	6 40	2 10		3 40	
	(Laurel Line)		\$3 40					
		AM	PM	PM	AM	AM	AM	

## Transferring Luggage and Passengers Between Depots in Chicago

Passengers holding tickets through Chicago may deliver their hand luggage at the **incoming** depots for delivery to the parcel checking rooms of the **outgoing** depots at the cost of only the usual parcel checking fees.

The Parmelee transfer coupons — included as part of your through ticket — also entitle you to the choice of transfer service in Parmelee limousine from your incoming depot to your outgoing depot, or to any hotel or other destination in downtown Chicago.

**Ask any Ticket Agent for details**

### EXPLANATION OF REFERENCE MARKS

For Tables 5 and 6.

†—Daily except Sunday.

‡—Sunday only.

A.M. time in light type.

P.M. time in heavy type.

c—Stops regularly to discharge passengers.

d—Stops Sunday and Monday Morning only, at Cresco 4:01 A.M.

e—Regular stop daily except Sunday and holidays. Sunday and holidays stops only on signal. (See Holiday Note.)

f—Stops on advance notice to Agent or conductor.

j—Stops on notice to conductor to discharge passengers.

k—Stops Saturday only.

m—Stops on notice to conductor to discharge passengers from points west of Dover.

r—Stops on advance notice to Agent to receive passengers for Newark and New York.

t—On Sunday train leaves Dover at 5:51 A.M.

w—Train No. 44 will stop at Scranton and Stroudsburg on weekdays to receive passengers (except Monday, September 4th); also, will stop to receive passengers Sunday, September 3rd. No. 44 stops at Scranton and Stroudsburg to discharge passengers daily.

†—Christopher St. Ferry will not run on Saturdays, Sundays or Major Holidays. (See Hol. Note.) The daily delivery and checking of baggage at Christopher Street, New York Station is discontinued. Baggage may be delivered or checked daily at Barclay Street, New York, Station.

NB—Will not carry checked baggage.

Holidays: The term holidays used in these tables applies to New Year's Day, Memorial Day, Independence Day, Labor Day, Thanksgiving, and Christmas Day.

### Courtesy—A Symbol of Lackawanna Service

It takes more than engines, tracks, and rolling stock to make a railroad tick. The loyal efficient employees of our railroad, who serve traveler and shipper in a friendly, courteous manner are really the fulcrum of Lackawanna dependability and service.

Many letters have been received from old patrons as well as new friends commending individual acts of courtesy and thoughtfulness on the part of our employees. We are grateful for such letters which encourage our personnel in their efforts to serve you better.

*The next time you ship or travel, remember courteous Lackawanna service*

# SCRANTON, POCONO MOUNTAIN POINTS AND STROUDSBURG TO NEW YORK

For condensed time and equipment of trains see pages 2 and 3.

Miles	TABLE 6 EASTWARD—Read Down		10 Daily	8 Daily	1104 See Note	1010 Ex. Sat. Sun. & Hol.	602 Ex. Daily	26 Ex. Sun. & Hol. See Note	614 Ex. Sun. & Hol.	2 Daily	1114 See Note	1030 Ex. Sat. Sun. & Hol.	22 Sun. Only See Note	6 Daily	1124 See Note	1054 Ex. Sat. Sun. & Hol.	934 See Note	634 Ex. Sat. Sun. & Hol.	24 Sun. Only See Note	NB 44 Daily	940 See Note	1128 See Note
		PM	AM	AM	AM	AM	AM	AM	AM	AM	PM	PM	PM	PM	PM	PM	PM	PM	PM	PM	PM	PM
.....	Wilkes-Barre (Laurel Line).....Lv	10 45	2 15	.....	.....	.....	.....	5 10	.....	8 45	.....	.....	12 45	11 15 12 45	.....	.....	.....	.....	3 45	4 45	.....	.....
262.1	Scranton.....Lv	12 30	3 02	.....	.....	.....	.....	6 15	.....	9 50	.....	.....	1 45	2 15	.....	.....	.....	.....	5 20	6 00	.....	.....
274.7	Moscow.....Lv	.....	.....	.....	.....	.....	.....	6 37	.....	10 13	.....	.....	.....	.....	.....	.....	.....	.....	.....	.....	.....	.....
282.3	Gouldsboro.....Lv	.....	.....	.....	.....	.....	.....	6 49	.....	10 27	.....	.....	.....	.....	.....	.....	.....	.....	.....	.....	.....	.....
287.6	Tobyhanna.....Lv	.....	.....	.....	.....	.....	.....	6 56	.....	10 36	.....	.....	.....	.....	.....	.....	.....	.....	.....	.....	.....	.....
292.6	Pocono Summit (Sta. for Pocono Mtn., Pocono Crest, and Split Rock Lodge).....Lv	.....	.....	.....	.....	.....	.....	7 05	.....	10 45	.....	.....	.....	.....	.....	.....	.....	.....	.....	.....	.....	.....
294.9	Mount Pocono.....Lv	.....	.....	.....	.....	.....	.....	7 10	.....	10 53	.....	.....	.....	.....	.....	.....	.....	.....	.....	.....	.....	.....
300.6	Cresco (Station for Skytop, Canadensis, Buck Hill Falls, Mountainhome, So. Sterling, Paradise Falls).....Lv	.....	.....	.....	.....	.....	.....	7 21	.....	11 07	.....	.....	.....	.....	.....	.....	.....	.....	.....	.....	.....	.....
306.0	Henryville.....Lv	.....	.....	.....	.....	.....	.....	7 29	.....	11 33	.....	.....	.....	.....	.....	.....	.....	.....	.....	.....	.....	.....
313.6	Stroudsburg & East Stroudsburg.....Lv	2 20	4 17	.....	.....	.....	.....	7 36	.....	11 37	.....	.....	.....	.....	.....	.....	.....	.....	.....	.....	.....	.....
318.0	Delaware Water Gap (Delaware River).....Lv	2 25	4 20	.....	.....	.....	.....	7 43	.....	11 44	.....	.....	.....	.....	.....	.....	.....	.....	.....	.....	.....	.....
330.4	Blairtown.....Lv	.....	.....	.....	.....	.....	.....	7 48	.....	12 00	.....	.....	.....	.....	.....	.....	.....	.....	.....	.....	.....	.....
334.5	Johnsonburg.....Lv	.....	.....	.....	.....	.....	.....	7 54	.....	12 06	.....	.....	.....	.....	.....	.....	.....	.....	.....	.....	.....	.....
357.1	Dover.....Lv	2 28	4 19	.....	.....	.....	.....	8 01	.....	12 30	.....	.....	.....	.....	.....	.....	.....	.....	.....	.....	.....	.....
357.1	Dover.....Lv	2 25	.....	.....	.....	.....	.....	.....	.....	.....	.....	.....	.....	.....	.....	.....	.....	.....	.....	.....	.....	.....
361.3	Denville.....Lv	.....	.....	.....	.....	.....	.....	.....	.....	.....	.....	.....	.....	.....	.....	.....	.....	.....	.....	.....	.....	.....
364.0	Mountain Lakes.....Lv	.....	.....	.....	.....	.....	.....	.....	.....	.....	.....	.....	.....	.....	.....	.....	.....	.....	.....	.....	.....	.....
366.0	Boonton.....Lv	.....	.....	.....	.....	.....	.....	.....	.....	.....	.....	.....	.....	.....	.....	.....	.....	.....	.....	.....	.....	.....
370.1	Towaco.....Lv	.....	.....	.....	.....	.....	.....	.....	.....	.....	.....	.....	.....	.....	.....	.....	.....	.....	.....	.....	.....	.....
372.3	Lincoln Park.....Lv	.....	.....	.....	.....	.....	.....	.....	.....	.....	.....	.....	.....	.....	.....	.....	.....	.....	.....	.....	.....	.....
374.7	Mountain View.....Lv	.....	.....	.....	.....	.....	.....	.....	.....	.....	.....	.....	.....	.....	.....	.....	.....	.....	.....	.....	.....	.....
380.1	Paterson (Passaic River).....Lv	.....	.....	.....	.....	.....	.....	.....	.....	.....	.....	.....	.....	.....	.....	.....	.....	.....	.....	.....	.....	.....
383.1	Athens.....Lv	.....	.....	.....	.....	.....	.....	.....	.....	.....	.....	.....	.....	.....	.....	.....	.....	.....	.....	.....	.....	.....
384.6	Passaic.....Lv	.....	.....	.....	.....	.....	.....	.....	.....	.....	.....	.....	.....	.....	.....	.....	.....	.....	.....	.....	.....	.....
385.9	Lyndhurst.....Lv	.....	.....	.....	.....	.....	.....	.....	.....	.....	.....	.....	.....	.....	.....	.....	.....	.....	.....	.....	.....	.....
387.0	Kingsland.....Lv	.....	.....	.....	.....	.....	.....	.....	.....	.....	.....	.....	.....	.....	.....	.....	.....	.....	.....	.....	.....	.....
387.1	Dover.....Lv	.....	.....	.....	.....	.....	.....	.....	.....	.....	.....	.....	.....	.....	.....	.....	.....	.....	.....	.....	.....	.....
361.3	Denville.....Lv	.....	.....	.....	.....	.....	.....	.....	.....	.....	.....	.....	.....	.....	.....	.....	.....	.....	.....	.....	.....	.....
365.6	Morris Plains.....Lv	.....	.....	.....	.....	.....	.....	.....	.....	.....	.....	.....	.....	.....	.....	.....	.....	.....	.....	.....	.....	.....
367.8	Morristown.....Lv	.....	.....	.....	.....	.....	.....	.....	.....	.....	.....	.....	.....	.....	.....	.....	.....	.....	.....	.....	.....	.....
369.9	Convent.....Lv	.....	.....	.....	.....	.....	.....	.....	.....	.....	.....	.....	.....	.....	.....	.....	.....	.....	.....	.....	.....	.....
372.1	Madison.....Lv	.....	.....	.....	.....	.....	.....	.....	.....	.....	.....	.....	.....	.....	.....	.....	.....	.....	.....	.....	.....	.....
374.1	Chatham.....Lv	.....	.....	.....	.....	.....	.....	.....	.....	.....	.....	.....	.....	.....	.....	.....	.....	.....	.....	.....	.....	.....
377.5	Summit.....Lv	.....	.....	.....	.....	.....	.....	.....	.....	.....	.....	.....	.....	.....	.....	.....	.....	.....	.....	.....	.....	.....
379.8	Short Hills.....Lv	.....	.....	.....	.....	.....	.....	.....	.....	.....	.....	.....	.....	.....	.....	.....	.....	.....	.....	.....	.....	.....
380.8	Millburn.....Lv	.....	.....	.....	.....	.....	.....	.....	.....	.....	.....	.....	.....	.....	.....	.....	.....	.....	.....	.....	.....	.....
382.4	Maplewood.....Lv	.....	.....	.....	.....	.....	.....	.....	.....	.....	.....	.....	.....	.....	.....	.....	.....	.....	.....	.....	.....	.....
383.7	South Orange.....Lv	.....	.....	.....	.....	.....	.....	.....	.....	.....	.....	.....	.....	.....	.....	.....	.....	.....	.....	.....	.....	.....
384.5	Mountain Station.....Lv	.....	.....	.....	.....	.....	.....	.....	.....	.....	.....	.....	.....	.....	.....	.....	.....	.....	.....	.....	.....	.....
385.4	Highland Avenue.....Lv	.....	.....	.....	.....	.....	.....	.....	.....	.....	.....	.....	.....	.....	.....	.....	.....	.....	.....	.....	.....	.....
386.1	Orange.....Lv	.....	.....	.....	.....	.....	.....	.....	.....	.....	.....	.....	.....	.....	.....	.....	.....	.....	.....	.....	.....	.....
387.0	Brick Church.....Lv	.....	.....	.....	.....	.....	.....	.....	.....	.....	.....	.....	.....	.....	.....	.....	.....	.....	.....	.....	.....	.....
387.6	East Orange.....Lv	.....	.....	.....	.....	.....	.....	.....	.....	.....	.....	.....	.....	.....	.....	.....	.....	.....	.....	.....	.....	.....
388.0	Grove Street.....Lv	.....	.....	.....	.....	.....	.....	.....	.....	.....	.....	.....	.....	.....	.....	.....	.....	.....	.....	.....	.....	.....
388.6	Rosville Avenue.....Lv	.....	.....	.....	.....	.....	.....	.....	.....	.....	.....	.....	.....	.....	.....	.....	.....	.....	.....	.....	.....	.....
389.8	Newark (Passaic River).....Lv	.....	.....	.....	.....	.....	.....	.....	.....	.....	.....	.....	.....	.....	.....	.....	.....	.....	.....	.....	.....	.....
395.2	HOBOKEN (Hudson River).....Lv	4 30	6 30	.....	.....	.....	.....	.....	.....	.....	.....	.....	.....	.....	.....	.....	.....	.....	.....	.....	.....	.....
396.2	D. L. & W. Ferries— Christopher St.♦.....Lv	.....	.....	.....	.....	.....	.....	.....	.....	.....	.....	.....	.....	.....	.....	.....	.....	.....	.....	.....	.....	.....
NEW YORK	Barelay St.....Lv	4 55	6 55	.....	.....	.....	.....	.....	.....	.....	.....	.....	.....	.....	.....	.....	.....	.....	.....	.....	.....	.....
NEW YORK	Hudson Tubes (Fare 15c) 33rd St. & 6th Ave.....Lv	4 59	6 50	.....	.....	.....	.....	.....	.....	.....	.....	.....	.....	.....	.....	.....	.....	.....	.....	.....	.....	.....
NEW YORK	Hudson Term. Bldg.—Cortlandt St.....Lv	4 56	6 49	.....	.....	.....	.....	.....	.....	.....	.....	.....	.....	.....	.....	.....	.....	.....	.....	.....	.....	.....

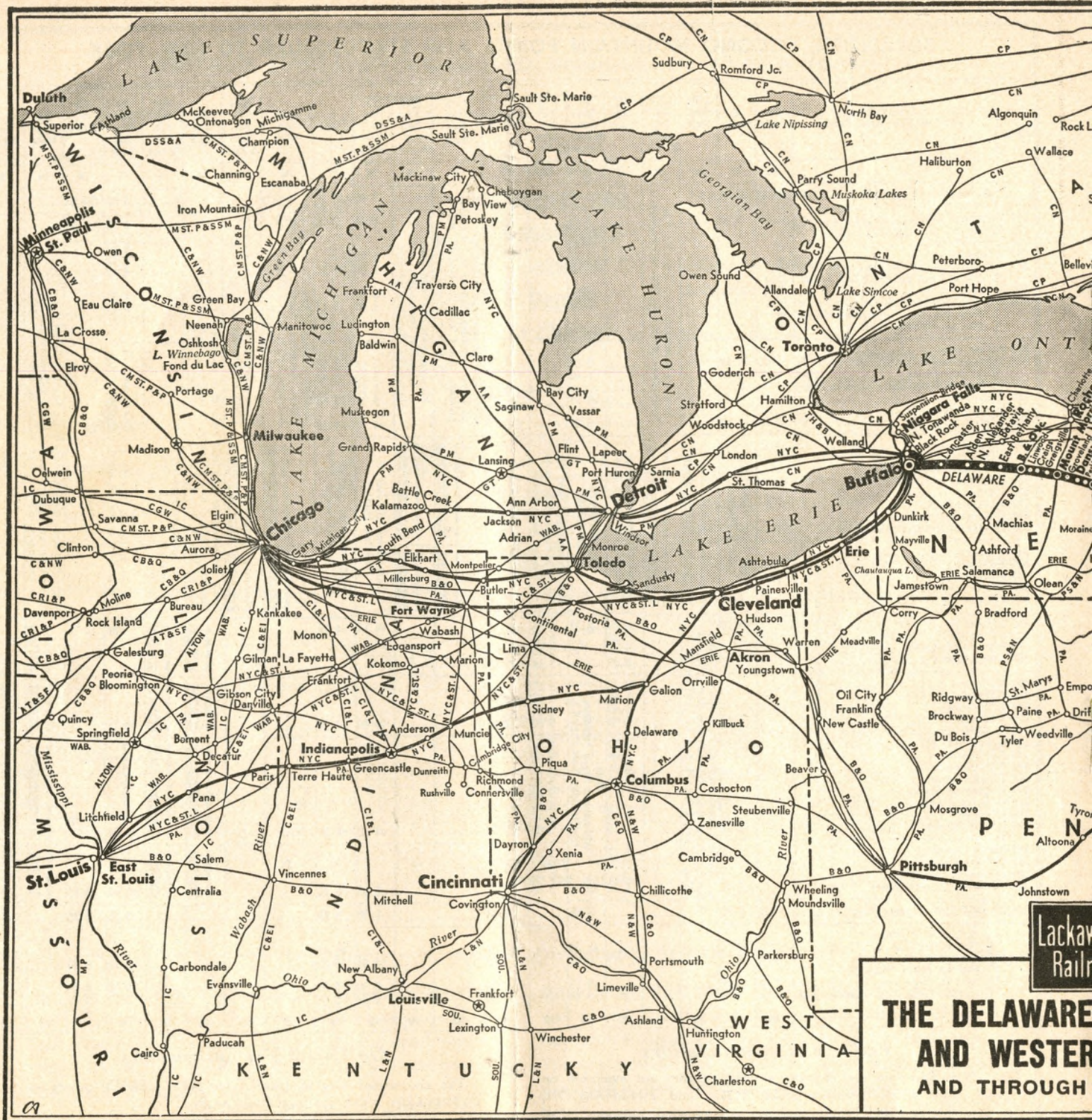
## Pullman Accommodations

New Bedroom and Roomette sleeping cars are available on all night trains between NEW YORK and BINGHAMTON, ELMIRA and BUFFALO, and trains operating between NEW YORK, CLEVELAND, and CHICAGO.

## Go Direct Via Lackawanna

The convenient way to travel from NEW JERSEY points to CLEVELAND, DETROIT and CHICAGO.








**LACKAWANNA RAILROAD** — The Shortest Route betw



### LACKAWANNA CONNECTIONS INTO NEW YORK CITY

Lackawanna Ferries   
 Hudson Tunnels   
 Subways 

RUNNING TIME FROM LACKAWANNA TERMINAL, HOBOKEN  
 To 33rd St. and 6th Ave. .... 14 minutes  
 To Hudson Terminal, Cortland St. .... 9 minutes  
 By Hudson River Ferries ..... 12 minutes



**LACKAWANNA RAILROAD CONNECTIONS**

J. W. CLEMENT CO. BUFFALO, N. Y.

Between New York — Scranton — Binghamton — Syracuse — Elmira — Buffalo

**BINGHAMTON AND SYRACUSE (SYRACUSE—OSWEGO SERVICE)**

Read Down See Bus Note Below\* Read Up

3 Daily		15 Daily		Miles	TABLE 7			
AM	PM	AM	PM		1906 Daily	10 Daily	10 Daily	8 Daily
9 03	11 36	NEW YORK	1.0	Hudson Tubes—(Fare 15c)	5 51	4 59	6 50	
9 09	11 47			Lv 33rd St. & 6th Ave. . . . . Ar	5 44	4 56	6 49	
				Hudson Term. Bldg.—Cortlandt St.				
				D. L. & W. Ferries—				
9 00	11 43			Lv . . . . . Barclay St. . . . . Ar	5 55	4 55	6 55	
9 03				Christopher St. . . . .	5 46	4 30	6 52	
9 30	12 05			Hoboken . . . . .	5 30	4 30	6 52	
9 43				Newark . . . . .	5 16		6 52	
9 50				Brick Church . . . . .	5 07		6 52	
10 29				Dover . . . . .	4 29	3 25	6 52	
12 45	3 55			Scranton . . . . .	2 15	1 15	6 52	
1 57	5 20			Ar . . . . . Binghamton . . . . . Lv	1 08	10 59	1 45	
2 05	7 00			Lv . . . . . Binghamton . . . . . Ar	12 35	10 30		
				Chenango Bridge . . . . .		10 13		
				203.7 . . . . .		10 06		
2 33	7 31	Whitney Point . . . . .	12 06	9 55				
a	a	Lisle . . . . .		9 52				
a	a	Killawog . . . . .		9 48				
2 46	7 45	Marathon . . . . .	11 52	9 44				
a	a	Blodgett Mills . . . . .		9 31				
3 10	8 10	Cortland . . . . .	11 33	9 25				
3 15	8 16	Homer . . . . .	11 19	9 15				
3 31	8 32	Tully . . . . .	11 04	8 59				
a	a	Apulia . . . . .		8 55				
e 52	8 58	Jamesville . . . . .	10 39	8 34				
4 10	9 15	Ar . . . . . Syracuse . . . . . Lv	10 25	8 20				

**\*SYRACUSE AND OSWEGO MOTOR LINES, INC.**  
Daily Bus Service Between Syracuse, Baldwinsville, Fulton, Minetto and Oswego Syracuse and Oswego Motor Lines, Inc. operate frequent bus service between Syracuse and Oswego and intermediate points, providing convenient connections with Lackawanna trains at Syracuse. Bus Terminals are located at 226 West Genesee St., Syracuse, N. Y. (four and a half short blocks from Lackawanna station) and at East First St., Oswego, N. Y. No through rail tickets sold, or baggage checked, beyond Syracuse.

**BINGHAMTON AND UTICA\***

Read Down Read Up

3 Daily		15 Daily		Miles	TABLE 8			
AM	PM	AM	PM		6 Daily	10 Daily	6 Daily	10 Daily
9 03	11 36	NEW YORK	1.0	Hudson Tubes—(Fare 15c)	5 51	4 59	6 50	
9 09	11 47			Lv 33rd St. & 6th Ave. . . . . Ar	5 44	4 56	6 49	
				Hudson Term. Bldg.—Cortlandt Street				
				D. L. & W. Ferries—				
9 00	11 43			Lv . . . . . Barclay St. . . . . Ar	5 55	4 55	6 55	
9 03				Christopher St. . . . .	5 46	4 30	6 52	
9 30	12 05			Hoboken . . . . .	5 30	4 30	6 52	
9 43				Newark . . . . .	5 16		6 52	
9 50				Brick Church . . . . .	5 07		6 52	
10 29				Dover . . . . .	4 29	3 25	6 52	
12 45	3 55			Scranton . . . . .	2 15	1 15	6 52	
1 57	5 20			Ar . . . . . Binghamton . . . . . Lv	1 08	10 59	1 45	
2 00	6 15			Lv . . . . . Binghamton . . . . . Ar	12 20	10 20	7 45	
				Chenango Bridge . . . . .		11 55	7 20	
2 25	6 40			Chenango Forks . . . . .	11 40	7 05		
2 40	6 55	Greene . . . . .	11 30	6 55				
2 50	7 05	Brisben . . . . .						
		Coventry . . . . .						
3 05	7 20	Oxford . . . . .	11 15	6 40				
3 20	7 35	Norwich . . . . .	11 00	6 25				
3 30	7 45	Galena (North Norwich) . . . . .	10 50	6 15				
3 45	7 55	Sherburne . . . . .	10 40	6 05				
		Earlville . . . . .		15 30				
		Poolville . . . . .		10 25	5 55			
4 05	8 10	Hubbardsville . . . . .	10 20	5 45				
4 10	8 15	North Brookfield . . . . .	10 05	5 30				
4 20	8 30	Waterville . . . . .	9 55	5 20				
4 30	8 40	Paris . . . . .						
		Richfield Junction . . . . .						
		Clayville . . . . .						
		Sauquoit . . . . .						
		Chadwicks . . . . .						
4 45	8 55	New Hartford . . . . .	9 40	5 10				
4 55	9 05	Ar . . . . . Utica Bus Terminal (Genesee St.) . . . . . Lv	9 30	4 55				

**\*TRAIN—BUS SERVICE.** Coordinated train and bus schedules as shown under table 8 are furnished only for information of the public. Buses are operated by Chenango Valley Transit Lines and leave from and arrive at D. L. & W. Station, Binghamton, N. Y. No through rates are published with Chenango Valley Transit Lines.

**SYRACUSE, BUFFALO, BINGHAMTON, PHILADELPHIA, ATLANTIC CITY, BALTIMORE AND WASHINGTON**

Read Down Read Up

1910 Daily		TABLE 9		1915 Daily	
AM	PM	AM	PM	AM	PM
8 20	10 30	Lv . . . . . Syracuse . . . . . Ar	8 15	9 15	
f 8 59		Tully . . . . .	8 32		
f 9 15		Homer . . . . .	8 16		
f 9 25		Cortland . . . . .	8 10		
f 9 44		Marathon . . . . .	7 45		
h 9 55		Whitney Point . . . . .	7 31		
10 30		Ar . . . . . Binghamton . . . . . Lv	7 00		
		Interstate Express via Cent. of Pa. and Reading Company	15 Daily		
		10 Daily			
		PM	AM		
4 45	8 10	Lv . . . . . Buffalo . . . . . Ar	11 30		
8 10		Corning . . . . .	8 22		
8 55		Elmira . . . . .	7 38		
10 23		Ar . . . . . Binghamton . . . . . Lv	6 05		
		1306 Daily	1301 Daily		
		PM	AM		
11 20		Lv . . . . . Binghamton . . . . . Ar	5 42		
		Lv . . . . . Scranton . . . . . Lv			
		306 Daily	301 Daily		
		AM	AM		
12 35		Lv . . . . . Scranton . . . . . Ar	4 33		
1 54		Ar . . . . . Wilkes-Barre . . . . . Lv	3 33		
3 48		Mauch Chunk . . . . .	1 16		
4 23		Allentown . . . . .	12 15		
5 06		Ar . . . . . Bethlehem . . . . . Lv	11 48		
		d 6 11	Ar . . . . . Lansdale . . . . . Lv	10 53	
		6 46	Ar . . . . . Wayne Jct. . . . . Lv	10 15	
		7 00	Ar . . . . . Philadelphia . . . . . Lv		
			(Reading Terminal)		
		1003 Daily	Pennsylvania-Reading (Seashore Lines)	1026 Daily	
		AM	Lv . . . . . Philadelphia . . . . . Ar	6 30	
8 45		Ar . . . . . Atlantic City . . . . . Lv	5 00		
10 15					
			Baltimore & Ohio R. R.	36 Daily	
		Lv . . . . . Wayne Jct. . . . . Ar			
		Lv . . . . . Philadelphia . . . . . Ar	8 20		
			(24th and Chestnut Sts.)		
		Ar . . . . . Baltimore . . . . . Lv	6 13		
			(Camden Station)		
		Ar . . . . . Washington . . . . . Lv	5 30		

**For Equipment on Interstate Express shown above, see Trains Nos. 1301 and 1306, Page 2.**

*(No coaches between Scranton and Binghamton)*

**EXPLANATION OF REFERENCE MARKS FOR TABLES 7, 8 AND 9**

A.M. time light type. P.M. time heavy type. †—Daily except Sunday. ‡—Daily except Saturday. a—Stops on notice to Conductor to discharge passengers holding tickets from Scranton and east and from Elmira and west. d—Stops to discharge passengers from points beyond Bethlehem. e—Stops daily on notice to Conductor to discharge passengers holding tickets from Scranton and east and Elmira and west, Sundays stops on signal to receive or discharge passengers. f—Stops on advance notice to Agent or Conductor. g—Stops Sundays only to receive or discharge passengers. h—Stops on signal to receive passengers for Scranton and east, and Elmira and west, providing Agents are notified in advance. j—Stops to pick up sleeping car passengers only upon advance notice. k—Christopher St. Ferry will not run on Saturdays, Sundays or Major Holidays. (See Hol. Note P. 5.) The daily delivery and checking of baggage at Christopher Street, New York station is discontinued. Baggage may be checked or delivered at Barclay Street New York station.

**NEW YORK AND ITHACA, VIA OWEGO**

Read Down			Read Up		
3 Daily	15 Daily	Miles	TABLE 10		6 Daily
AM	PM		New York		PM
9 03	11 36	.....	Hudson Tubes— (Fare 15c)	Lv. 33rd St. & 6th Ave. Ar	5 51
9 09	11 47	.....	Hud. Term Bldg., Cortlandt St.		5 44
9 00	11 43	.....	D. L. & W. Ferries—		
9 30	12 05	1.0	Barclay Street	Lv. Ar	5 55
9 43	12 18	1.0	Christopher Street	Lv. Ar	5 46
9 50	12 25	1.0	Hoboken	Lv. Ar	5 30
10 03	12 38	1.0	Newark	Lv. Ar	5 16
10 10	12 45	1.0	Brick Church	Lv. Ar	5 07
10 28	12 53	1.0	Summit	Lv. Ar	4 54
10 28	12 53	1.0	Dover	Lv. Ar	4 29
10 28	12 53	1.0	Lv. Philadelphia (Read. Co.) Ar		.....
12 45	3 55	134.1	Lv. Scranton	Ar	2 15
1 57	6 05	192.7	Binghamton	Ar	1 08
2 26	6 47	213.4	Ar. Owego	Lv	12 32
Bus	Bus				Bus
PM	AM				AM
2 35	7 30	213.4	Lv. Owego	Ar	11 45
2 50	7 50	218.8	Catonk	Ar	11 35
3 00	8 00	224.1	Candor	Ar	11 25
3 10	8 10	229.4	Willseyville	Ar	11 15
3 30	8 40	246.3	Ithaca (Aurora St. Bus Term.)	Ar	10 45
3 45	8 45	247.4	Ar. Ithaca	Lv	10 25
PM	AM		(D. L. & W. Station)		AM

**To Our Patrons....**  
 All forms of railroad tickets reading via the D. L. & W. R. Co. will be honored via the L. D. Dickinson Motor Coach Lines between Owego and Ithaca or intermediate stations on the connecting bus schedule shown herein.  
 Hand baggage may be checked through to destination. Trunks and other bulky baggage will be checked to and from Owego only.

**BUFFALO, ELMIRA, SYRACUSE, BINGHAMTON, SCRANTON, POCONO MOUNTAIN POINTS, PHILADELPHIA, BALTIMORE AND WASHINGTON VIA NEWARK**

Read Down				Read Up					
7 Daily	5 Daily	11 Ex. Sun. & Hol.	3 Daily	TABLE 13		8 Daily	26 Ex. Sun. & Hol.	2 Daily	6 Daily
PM	PM	AM	AM			AM	PM	PM	PM
3 10	12 00	11 00	5 05	Lv. P.R.R. Washington		P.R.R. Ar	10 45	1 15	5 40
3 52	12 41	11 41	5 50	Baltimore			10 02	12 35	5 00
4 54	1 48	12 44	7 00	Wilmington			8 45	11 34	3 52
5 23	2 21	1 13	8 10	Philadelphia (30th Street)			8 10	11 07	3 19
6 00	2 59	.....	8 59	Trenton			7 31	10 29	2 33
6 44	3 49	2 29	8 59	Ar. P.R.R. Newark		P.R.R. Lv	6 45	9 44	1 45
6 00	2 00	1 00	8 00	P.R.R. Philadelphia		P.R.R. Lv	8 10	11 07	3 19
6 04	2 04	1 04	8 04	Broad Street Station		Ar	8 10	10 29	2 33
6 38	2 38	1 39	8 38	30th Street Station			7 31	10 29	2 33
7 24	3 21	2 24	9 19	Trenton			6 45	9 44	1 45
7 44	4 03	2 49	9 43	Ar. P.R.R. Newark		P.R.R. Lv	6 16	9 20	1 16
9 20	5 39	4 38	11 21	Lv. DL&W. Newark		DL&W. Ar	4 20	7 42	11 37
9 45	a	5 08	11 44	Stroudsburg & Cresco			d	7 21	11 07
10 39	b	5 28	12 02	Pocono Summit			c	7 05	10 45
11 53	c	6 15	12 45	Scranton			3 02	6 15	9 50
.....	.....	1 57	.....	Binghamton			1 45	8 23	1 08
.....	.....	.....	.....	Ithaca (Via Bus) See Table 13			.....	.....	10 25
.....	.....	.....	.....	Syracuse			8 20	.....	10 25
1 08	9 45	.....	3 09	Elmira			12 38	.....	6 40
3 45	1 05	.....	5 45	Ar. DL&W. Buffalo		DL&W. Lv	10 00	.....	3 30
AM	AM	PM	PM				PM	AM	AM

**NEW YORK AND BUSHKILL**

Read Down		TRAIN-BUS SCHEDULE		Read Up	
3 Ex. Sun. & Hcl.	26 Ex. Sun. & Hcl.	TABLE 11		3 Ex. Sun. & Hcl.	26 Ex. Sun. & Hcl.
AM	AM			AM	AM
9 00	9 55	D. L. & W. Ferries—		9 00	9 55
9 03	9 59	Barclay St.		9 03	9 59
9 30	9 35	Christopher St.		9 30	9 35
11 21	7 42	Hoboken		11 21	7 42
Bus	Bus	Ar. Stroudsburg & E. Stroudsburg		Bus	Bus
11 35	7 35	Del. Valley Trans. Co.		11 35	7 35
11 50	7 20	Lv. Stroudsburg and East (Stroudsburg (DL&W Sta.))		11 50	7 20
1 00	7 10	Marshalls Creek		1 00	7 10
1 05	7 00	Echo Lake		1 05	7 00
PM	AM	Ar. Bushkill (Tamiment)		PM	AM

**STROUDSBURG, PORTLAND, DELAWARE, PHILLIPSBURG AND PHILADELPHIA**

585 Sun. & Hol.		TABLE 14		586 Sun. & Hol.	
AM	AM	Lv. P.R.R. Philadelphia		P.R.R. Ar	PM
7 05	9 36	Broad Street Station		4 14	.....
11 15	9 36	P.R.R. Phillipsburg		4 49	.....
10 20	10 20	Delaware		14 10	.....
10 31	10 31	Portland		4 04	.....
10 40	10 40	Delaware Water Gap		3 54	.....
AM	AM	Ar. Stroudsburg & E. Stroudsburg		3 45	.....

**NEW YORK, BUFFALO AND NIAGARA FALLS**

Read Down			TRAIN-BUS SCHEDULE			Read Up			
7 Daily	3 Daily	15 Daily	TABLE 12			2 Daily	6 Daily	10 Daily	8 Daily
PM	AM	PM				PM	PM	AM	AM
7 00	9 00	11 43	D. L. & W. Ferries—			1 55	5 55	4 55	6 55
7 30	9 03	12 05	Lv. Barclay Street			1 47	5 46	4 30	6 52
7 30	9 30	11 30	Lv. Christopher Street			1 30	5 30	4 30	6 30
3 45	5 45	11 30	Lv. Hoboken			3 30	9 15	4 45	10 00
Bus	Bus	Bus	Ar. Buffalo			Bus	Bus	Bus	Bus
e 4 40	6 00	12 00	Lv. Buffalo (D. L. & W. Terminal)			1 10	8 40	4 40	9 40
5 50	7 10	1 40	Ar. Niagara Falls (I.R.C. Terminal)			12 00	7 30	5 15	8 30
AM	PM	PM				AM	AM	PM	PM

**SCRANTON, BERWICK AND SUNBURG**

Read Down			TRAIN-BUS SCHEDULE			Read Up			
5 Daily	3 Daily	15 Daily	TABLE 15			10 Daily	26 Ex. Sun. & Hol.	6 Daily	44 Ex. Sun. & Hol.
PM	AM	PM				AM	AM	PM	PM
3 28	9 00	11 43	D. L. & W. Ferries—			4 55	9 55	5 55	9 40
3 32	9 03	12 05	Lv. Barclay Street			4 59	9 59	5 46	.....
3 50	9 30	11 30	Lv. Christopher Street			4 30	9 35	5 30	9 25
4 03	9 43	11 30	Hoboken			9 20	6 15	5 30	9 12
4 10	9 50	11 30	Newark			9 24	3 41	5 07	.....
4 52	10 28	11 30	Brick Church			3 25	8 37	4 29	8 16
6 58	12 45	3 27	Dover			12 30	6 15	2 15	6 00
Bus	Bus	Bus	Ar. Scranton			Bus	Bus	Bus	Bus
7 15	2 15	5 15	Pennsylvania Greyhound Lines			11 50	6 05	1 15	5 30
9 05	4 00	7 00	Lv. Scranton*			10 02	4 21	11 25	3 40
9 28	4 23	7 23	Berwick			9 40	3 58	11 02	3 17
9 45	4 40	7 40	Bloomsburg			9 24	3 41	10 45	3 00
10 05	5 00	8 00	Danville			9 05	3 21	10 25	2 40
10 10	5 05	8 05	Northumberland			9 00	3 15	10 20	2 35
PM	PM	AM	Ar. Sunburg			PM	AM	AM	PM

**EXPLANATION OF REFERENCE MARKS FOR TABLES 10, 11, 12, 13, 14 AND 15**

A. M. time light type. P. M. time heavy type. †-Daily except Sunday. §-Sunday only. ♦-Christopher Street Ferry will not run on Saturdays, Sundays or Major Holidays. (See Holiday Note Page 5.) † Arrives Pennsylvania Station (30th St.) a-Stops Friday, Sunday and Holidays only at Cresco 6:03 P.M., Pocono Summit 6:20 P.M. On Fridays stops on notice to conductor to discharge passengers from Stroudsburg and East, and on advance notice to Agent to receive passengers for Scranton and West; Sunday and Holidays a regular stop. (See Holiday note page 5.) c-Stops Daily at Pocono Summit 10:02 P.M., to discharge passengers from Newark and on advance notice to agent to receive passengers for Buffalo and west. d-Stops at Cresco Sunday and Monday only at 4:01 A.M. e-Sunday leaves at 5:00 A.M. f-Stops on advance notice to agent or conductor to receive or discharge passengers. m-Stops regularly to discharge passengers. g-Saturday leaves 3:00 P.M. z-Stops regularly to receive passengers. \* Buses leave and arrive Pennsylvania Greyhound Terminal, one block from D. L. & W. Station. ■ TRAIN-BUS SERVICE. Coordinated train and bus schedules as shown under Tables 12 and 15 are furnished only for the information of the public. No through rates are published with bus lines. \*-Daily Except Sundays and Holidays.

## GENERAL INFORMATION

**RESPONSIBILITY**—This time table is furnished to the public as a matter of information only. The company is not responsible for errors therein, inconvenience or damage resulting from delayed trains or failure to make connections, or for shortage of equipment. The schedules and equipment shown herein are subject to change without notice.

**CHILDREN**—Under five years of age carried free, when accompanied by parent or guardian; five years of age and under 12, one-half fare; 12 years of age or over, full fare.

**ADJUSTMENT OF FARES**—In case of dispute with conductors or agents, passengers should pay the fare required, take a receipt, and communicate with the General Passenger Agent, 140 Cedar Street, New York 6, New York.

Passengers leaving train short of destination of the ticket should have the conductor make endorsement on the ticket to that effect.

**REDEMPTION OF TICKETS**—Tickets unused or partly used will be redeemed under tariff regulations by the General Passenger Agent, 140 Cedar Street, New York 6, New York

**ARTICLES LOST**—When articles are lost on trains or left at stations, owners should immediately apply to Agent at station where they leave train, or address Manager Mail, Express, Baggage and Milk Traffic, Lackawanna Terminal, Hoboken, N. J., giving full description of property, stating date of loss and train number.

### BAGGAGE—

(a) 150 pounds of baggage, not exceeding \$100.00 in value, will be checked free on each adult ticket, and 75 pounds, not exceeding \$50.00 in value, on each child's ticket. Excess charge will be collected for excess weight and excess value, but no piece of baggage exceeding

300 pounds in weight (except immigrant baggage checked at port of landing), or single shipment exceeding \$2,500 in value will be accepted for checking.

(b) This Company cannot guarantee to forward baggage on same train with passenger; and when necessary, will forward it on other trains.

(c) Baggage checked to New York City will be forwarded to Barclay Street Station.

(d) No baggage will be checked or delivered at the Christopher Street, New York Station. Baggage may be checked or delivered daily at Barclay Street, New York Station.

(e) Baggage Delivery Service—Arrangements can be made at the time of checking baggage for delivery to residence, hotel or other point in New York City, Newark, Buffalo, and other important cities.

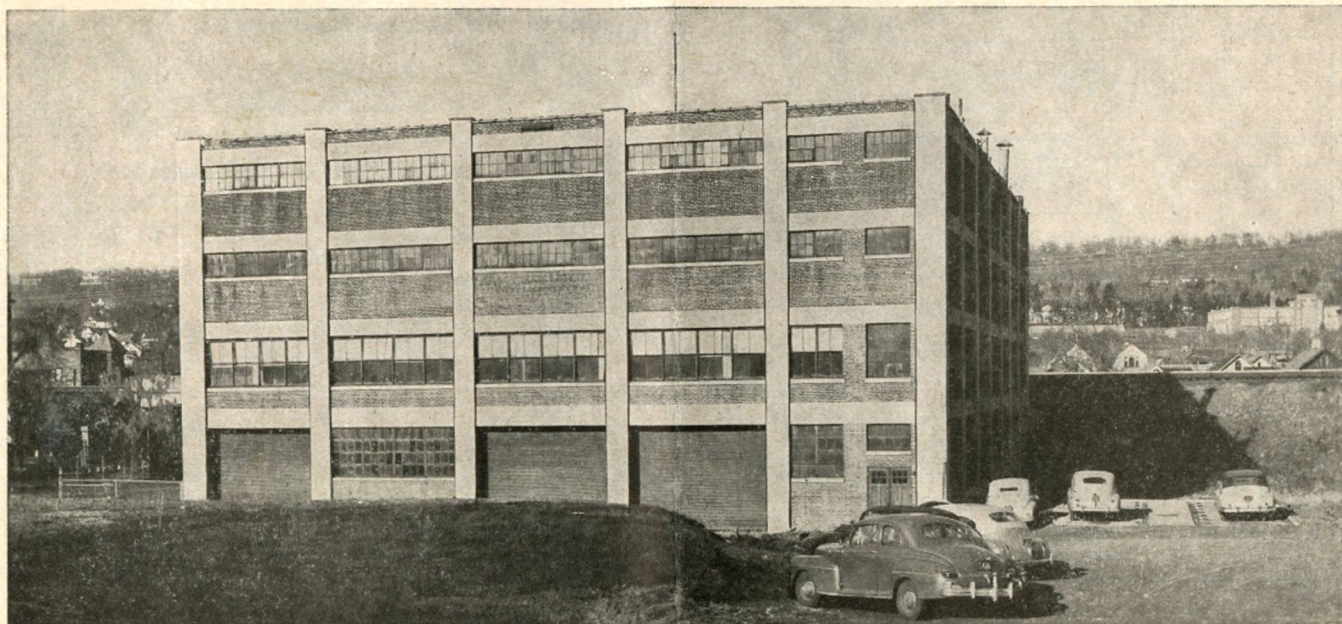
(f) Storage will be charged on each piece of baggage remaining at stations over 24 hours, except that certain concessions will be allowed for Saturdays, Sundays and holidays.

(g) Baggage for stations where there is no agent must be claimed at the baggage car door immediately upon arrival at that station; otherwise it will be carried to first station where agent is on duty and held for further orders.

(h) Parcel Rooms will be found at the principal stations, where packages, hand baggage, etc., may be checked and cared for at a nominal charge.

**STOP-OVERS**—Practically all tickets permit stop-overs within limit at any station en route on application to Conductor.

For further detailed information consult Ticket Agent.



### FOR SALE OR LEASE MANUFACTURING PLANT, ORANGE, N. J.

Modern 4-Story Reinforced Fireproof Building 64,400 sq. ft.—Land Area 1.42 Acres—Bays 20' x 20'—2 Elevators—200 lbs. Floor Load—Automatic Sprinklers—D. L. & W. Side Track—All City Utilities—Power 440 Volts-60 Cycle, 3 Phase.

For further detailed information regarding this property and other sites, telephone or write

L. E. TENNEY, Manager Commercial Development, Lackawanna Railroad  
140 CEDAR STREET, NEW YORK 6, N. Y. Telephone: BARclay 7-2500

# RAILROAD, SLEEPING AND PARLOR CAR FARES—SUBJECT TO CHANGE

FARES SHOWN DO NOT INCLUDE 15% FEDERAL TAX.

	Rail Ticket Fares			
	One Way		Round Trip	
	In Coaches	In Sleeping or Parlor Cars	In Coaches	In Sleeping or Parlor Cars
<b>New York, N. Y. or Hoboken, N. J. to</b>				
Ann Arbor, Mich. . . . .	\$23.18	\$30.52	\$37.35	\$57.53
Bath, N. Y. . . . .	9.79	12.98	16.85	25.30
Battle Creek, Mich. . . . .	25.95	34.28	41.65	65.05
Binghamton, N. Y. . . . .	6.57	8.71	13.14	17.42
Buffalo, N. Y. . . . .	13.42	17.84	19.30	30.20
Chicago, Ill. . . . .	28.71	38.59	43.80	70.15
Chicago, Ill. . . . .	10.30	14.89	16.75	27.00
Cleveland, Ohio . . . . .	18.33	24.65	27.90	43.60
Cleveland, Ohio . . . . .	19.33	25.65	29.40	47.40
Corning, N. Y. . . . .	9.11	12.08	15.90	23.65
Cortland, N. Y. . . . .	8.10	10.64	15.20	20.90
Cresco, Pa. . . . .	3.30	4.34	6.60	8.68
Dansville, N. Y. . . . .	21.90	28.58	35.40	57.70
Detroit, Mich. . . . .	2.40	3.20	4.80	6.40
Elmira, N. Y. . . . .	8.53	11.33	15.20	22.20
Erle, Pa. . . . .	16.36	21.84	25.15	41.05
Ithaca, N. Y. . . . .	8.44	11.20	15.20	22.20
Jackson, Mich. . . . .	24.42	32.27	39.35	61.03
Kalamazoo, Mich. . . . .	26.72	35.34	42.75	67.17
Kalamazoo, Mich. . . . .	11.40	15.09	19.10	29.10
Mt. Pocono, Pa. . . . .	3.47	4.58	6.94	9.16
Owego, N. Y. . . . .	7.35	9.69	14.70	19.38
Pocono Summit, Pa. . . . .	3.53	4.74	7.06	9.48
Seranton, Pa. . . . .	4.55	6.09	9.10	12.18
St. Louis, Mo. . . . .	33.43	45.05	50.95	81.20
St. Louis, Mo. . . . .	35.83	47.55	54.70	85.65
Stroudsburg, Pa. . . . .	2.87	3.76	5.40	7.20
Syracuse, N. Y. . . . .	9.26	12.31	17.35	23.50
Waverly, N. Y. . . . .	7.92	10.51	15.20	20.65
<b>Newark, N. J. to</b>				
Ann Arbor, Mich. . . . .	23.01	30.31	37.10	57.13
Bath, N. Y. . . . .	9.54	12.68	16.50	24.63
Battle Creek, Mich. . . . .	25.79	34.07	41.35	64.65
Binghamton, N. Y. . . . .	6.33	8.39	12.66	16.78
Buffalo, N. Y. . . . .	13.25	17.63	21.50	33.60
Chicago, Ill. . . . .	28.71	38.59	43.80	70.15
Chicago, Ill. . . . .	10.30	14.89	16.75	27.00
Cleveland, Ohio . . . . .	18.33	24.65	27.90	43.60
Cleveland, Ohio . . . . .	18.99	25.28	28.95	46.75
Corning, N. Y. . . . .	8.87	11.78	15.50	23.05
Cortland, N. Y. . . . .	7.85	10.35	15.20	20.45
Cresco, Pa. . . . .	3.04	4.05	6.08	8.10
Dansville, N. Y. . . . .	10.62	14.19	18.10	27.45
Detroit, Mich. . . . .	21.74	28.07	35.25	53.85
Elmira, N. Y. . . . .	8.26	11.04	15.00	22.00
Erle, Pa. . . . .	16.20	21.60	25.00	40.65
Ithaca, N. Y. . . . .	8.19	10.95	15.20	22.20
Jackson, Mich. . . . .	24.26	32.05	39.05	60.63
Kalamazoo, Mich. . . . .	26.55	35.12	42.50	66.77
Kalamazoo, Mich. . . . .	14.29	18.78	23.80	36.00
Mt. Pocono, Pa. . . . .	3.20	4.29	6.40	8.66
Owego, N. Y. . . . .	7.09	9.38	14.18	18.66
Pocono Summit, Pa. . . . .	3.30	4.43	6.60	8.86
Seranton, Pa. . . . .	4.39	5.78	8.78	11.56
St. Louis, Mo. . . . .	33.43	45.05	50.95	81.20
St. Louis, Mo. . . . .	35.60	47.19	54.20	84.95
Stroudsburg, Pa. . . . .	2.62	3.44	5.24	6.88
Syracuse, N. Y. . . . .	9.03	11.99	15.48	23.40
Waverly, N. Y. . . . .	7.68	10.19	15.20	20.25
<b>Seranton, Pa. to</b>				
Ann Arbor, Mich. . . . .	18.69	24.62	30.55	46.88
Bath, N. Y. . . . .	5.22	6.99	10.44	13.98
Battle Creek, Mich. . . . .	21.47	28.37	34.80	54.80
Binghamton, N. Y. . . . .	2.03	2.70	4.06	5.40
Brick Church, N. J. . . . .	4.21	5.64	8.42	11.28
Buffalo, N. Y. . . . .	8.93	11.94	15.65	23.35
Chicago, Ill. . . . .	25.24	34.14	38.40	61.45
Chicago, Ill. . . . .	26.75	35.63	40.70	64.15
Cleveland, Ohio . . . . .	15.19	20.25	23.85	38.25
Cleveland, Ohio . . . . .	15.19	20.25	23.85	38.25
Corning, N. Y. . . . .	4.55	6.09	9.10	12.18
Cortland, N. Y. . . . .	3.53	4.66	7.06	9.32
Cresco, Pa. . . . .	1.35	1.80	2.70	3.60
Detroit, Mich. . . . .	14.42	22.97	28.65	43.60
Elmira, N. Y. . . . .	3.97	5.33	7.94	10.66
Erle, Pa. . . . .	11.90	15.91	19.75	30.60
Ithaca, N. Y. . . . .	3.87	5.11	7.74	10.35
Jackson, Mich. . . . .	19.94	26.36	32.55	50.38
Kalamazoo, Mich. . . . .	22.23	29.43	35.95	56.52
Kalamazoo, Mich. . . . .	6.84	9.08	13.68	18.16
Mt. Pocono, Pa. . . . .	1.10	1.51	2.20	3.02
Newark, N. J. . . . .	4.39	5.78	8.78	11.56
New York, N. Y. . . . .	4.55	6.09	9.10	12.18
Owego, N. Y. . . . .	2.79	3.68	5.58	7.36
Pocono Summit, Pa. . . . .	1.10	1.43	2.20	2.86
St. Louis, Mo. . . . .	31.20	41.94	47.50	75.55
St. Louis, Mo. . . . .	32.15	42.60	48.90	76.75
Stroudsburg, Pa. . . . .	1.73	2.33	3.42	4.56
Syracuse, N. Y. . . . .	4.73	6.30	9.46	12.60
Waverly, N. Y. . . . .	3.38	4.50	6.76	9.00

	Rail Ticket Fares			
	One Way		Round Trip	
	In Coaches	In Sleeping or Parlor Cars	In Coaches	In Sleeping or Parlor Cars
<b>Binghamton, N. Y. to</b>				
Ann Arbor, Mich. . . . .	\$16.66	\$21.92	\$27.55	\$42.01
Bath, N. Y. . . . .	3.20	4.29	6.38	8.58
Battle Creek, Mich. . . . .	19.44	25.67	31.70	49.53
Brick Church, N. J. . . . .	6.23	8.34	12.46	16.68
Buffalo, N. Y. . . . .	6.91	9.24	13.82	18.48
Chicago, Ill. . . . .	23.22	31.44	35.40	56.60
Chicago, Ill. . . . .	24.73	32.93	37.65	59.90
Cleveland, Ohio . . . . .	13.16	17.55	21.45	33.55
Cleveland, Ohio . . . . .	13.16	17.55	21.45	33.55
Corning, N. Y. . . . .	2.52	3.39	5.04	6.78
Cresco, Pa. . . . .	3.30	4.43	6.60	8.86
Dansville, N. Y. . . . .	4.31	5.78	8.62	11.56
Detroit, Mich. . . . .	15.89	20.27	25.60	38.73
Elmira, N. Y. . . . .	1.93	2.63	3.90	5.26
Erle, Pa. . . . .	9.88	13.21	19.00	25.65
Ithaca, N. Y. . . . .	1.85	2.50	3.70	5.00
Jackson, Mich. . . . .	17.91	23.66	29.40	45.51
Kalamazoo, Mich. . . . .	20.21	26.73	32.95	51.65
Mt. Morris, N. Y. . . . .	4.82	6.38	9.64	12.76
Mt. Pocono, Pa. . . . .	3.13	4.13	6.26	8.26
Newark, N. J. . . . .	8.29	11.66	16.78	22.36
New York, N. Y. . . . .	6.57	8.71	13.14	17.42
Pocono Summit, Pa. . . . .	3.04	4.05	6.08	8.10
Seranton, Pa. . . . .	2.03	2.70	4.06	5.40
St. Louis, Mo. . . . .	29.18	39.24	44.45	70.75
St. Louis, Mo. . . . .	30.68	40.74	46.75	73.45
Stroudsburg, Pa. . . . .	2.70	3.50	5.00	6.60
Syracuse, N. Y. . . . .	2.70	3.50	5.40	7.20
<b>Elmira, N. Y. to</b>				
Ann Arbor, Mich. . . . .	14.74	19.27	24.90	36.71
Bath, N. Y. . . . .	1.27	1.64	2.54	3.28
Battle Creek, Mich. . . . .	17.52	23.03	28.80	44.23
Binghamton, N. Y. . . . .	1.95	2.63	3.90	5.26
Brick Church, N. J. . . . .	8.19	10.96	15.20	21.45
Buffalo, N. Y. . . . .	21.29	28.79	32.55	52.50
Chicago, Ill. . . . .	22.77	30.31	34.65	54.85
Chicago, Ill. . . . .	13.07	18.39	21.45	33.55
Cleveland, Ohio . . . . .	11.23	14.93	18.55	28.75
Cleveland, Ohio . . . . .	11.23	14.93	18.55	28.75
Cortland, N. Y. . . . .	2.86	3.84	5.72	7.68
Cresco, Pa. . . . .	5.22	7.04	10.44	14.08
Dansville, N. Y. . . . .	13.47	17.63	23.50	33.43
Detroit, Mich. . . . .	7.92	10.59	15.20	20.35
Erle, Pa. . . . .	2.45	3.20	4.60	6.10
Ithaca, N. Y. . . . .	15.99	21.02	26.50	40.21
Jackson, Mich. . . . .	18.28	24.09	29.95	46.35
Mt. Morris, N. Y. . . . .	5.06	6.75	10.12	13.50
Mt. Pocono, Pa. . . . .	8.26	11.04	15.20	21.70
Newark, N. J. . . . .	5.13	6.83	10.20	13.50
New York, N. Y. . . . .	8.53	11.33	15.20	22.20
Pocono Summit, Pa. . . . .	4.98	6.68	9.96	13.36
Seranton, Pa. . . . .	3.97	5.33	7.94	10.66
St. Louis, Mo. . . . .	27.25	36.59	41.50	65.95
St. Louis, Mo. . . . .	28.75	38.09	43.80	68.65
Stroudsburg, Pa. . . . .	5.74	7.65	11.48	15.30
Syracuse, N. Y. . . . .	4.14	5.48	8.28	10.96
<b>Buffalo, N. Y. to</b>				
Bath, N. Y. . . . .	6.91	9.24	13.82	18.48
Binghamton, N. Y. . . . .	13.16	17.55	21.45	33.55
Brick Church, N. J. . . . .	16.36	21.45	31.46	41.60
Chicago, Ill. . . . .	17.81	23.70	27.15	44.10
Cleveland, Ohio . . . . .	6.23	8.34	12.46	16.68
Cleveland, Ohio . . . . .	6.23	8.34	12.46	16.68
Corning, N. Y. . . . .	6.91	9.24	13.82	18.48
Cresco, Pa. . . . .	10.22	13.66	17.45	26.50
Dansville, N. Y. . . . .	8.48	11.04	16.96	20.25
Detroit, Mich. . . . .	8.48	11.04	16.96	20.25
Elmira, N. Y. . . . .	7.35	9.81	14.70	19.50
Ithaca, N. Y. . . . .	10.05	13.34	17.20	25.90
Mt. Morris, N. Y. . . . .	13.25	17.63	21.50	33.60
Newark, N. J. . . . .	13.42	17.84	19.30	30.20
New York, N. Y. . . . .	6.23	8.26	12.46	16.52
Owego, N. Y. . . . .	9.95	13.29	17.10	25.85
Pocono Summit, Pa. . . . .	8.93	11.94	15.65	23.35
Seranton, Pa. . . . .	22.27	30.00	33.95	54.40
St. Louis, Mo. . . . .	33.77	41.50	46.25	76.80
Stroudsburg, Pa. . . . .	10.72	14.24	18.15	27.55
Syracuse, N. Y. . . . .	8.10	10.80	15.20	21.30
Waverly, N. Y. . . . .	5.26	7.44	11.12	14.88

RATES FOR OTHER ACCOMMODATIONS IN PULLMAN SLEEPING CARS									
Rate For Lower Berth 1st	Rate For Upper Berth 1st	Rate For One Person	Rate For Two or More Persons	Rate For One Person	Rate For Two or More Persons	Rate For One Person	Rate For Two or More Persons	Rate For One Person	Rate For Two or More Persons
\$3.00	\$2.50	4.45	\$5.70	\$6.60	\$7.75	\$8.55	\$9.00	\$9.00	\$9.00
3.50	3.00	4.85	6.15	7.05	8.20	9.00	9.50	9.50	9.50
3.75	3.25	5.20	6.55	7.45	8.60	9.40	9.90	9.90	9.90
4.10	3.60	5.75	7.00	7.90	9.05	9.85	10.35	10.35	10.35
4.25	3.75	5.90	7.15	8.05	9.20	10.00	10.50	10.50	10.50
4.40	3.90	6.05	7.30	8.20					

STATION INDEX	Table No.	Table No.	Table No.	Table No.	
<b>A</b>					
†Ackermanville, Pa.....		Delawanna, N. J.....	3, 6	LaPlume, Pa.....	4, 5
†Alden, N. Y.....		Delaware, N. J.....	14	†Lehigh, Pa.....	
†Alford, Pa.....		Delaware Water Gap, Pa.	3, 6, 14	†Leicester, N. Y.....	
†Allentown, Pa.....	9	Denville, N. J.....	3, 6	†Lime Ridge, Pa.....	
×Amper, N. J.....		†Depew, N. Y.....	1, 2	Lincoln Park, N. J.....	3, 6
†Analomink, Pa.....		Detroit, Mich.....	3, 6, 7, 8, 10, 15	Linwood, N. Y.....	
▲Andover, N. J.....		Dover, N. J.....		Lisle, N. Y.....	7
†Andover Jct., N. J.....	1, 2	†Dunmore, Pa.....		†Litchfield, N. Y.....	
Ann Arbor, Mich.....	4, 5	†Duryea, Pa.....		†Little Falls, N. J.....	
Apalachin, N. Y.....	7			†Little York, N. Y.....	
Apulia, N. Y.....	1, 2	<b>E</b>		†Lounsberry, N. Y.....	
Ashtabula, Ohio.....	3, 6	Earlville, N. Y.....	8	†Lowman, N. Y.....	
Athena, N. J.....	4, 5	†East Alexander, N. Y.....		†Luzerne, Pa.....	3, 6
Athens, Pa.....	4, 5	†East Bangor, Pa.....	4, 5	Lyndhurst, N. J.....	
(See Waverly, N. Y.)	4, 5	†East Bethany, N. Y.....		○Lyons, N. J.....	
Atlanta, N. Y.....	9	†East Buffalo, N. Y.....			
Atlantic City, N. J.....	4, 5	†East Freetown, N. Y.....		<b>M</b>	
†Auchincloss, Pa.....	4, 5	†East Lancaster, N. Y.....	3, 6	Madison, N. J.....	3, 6
†Augusta, N. J.....	4, 5	East Orange, N. J.....		†Manunka Chunk, N. J.....	3, 6
Avoca, N. Y.....	4, 5	East Stroudsburg, Pa.		Maplewood, N. J.....	3, 6
†Avaldale, Pa.....		(See Stroudsburg, Pa.)	11	Marathon, N. Y.....	7, 9
		†Edelman, Pa.....		Marshall's Creek, Pa.....	11
<b>B</b>		†Edinboro, Pa.....	1, 2, 4, 5, 9, 13	†Martins Creek, Pa.....	
†Baldwinsville, N. Y.....	(See Bus Note under Table 7)	†Elmhurst, Pa.....		†Martins Creek, Pa.....	
Baltimore, Md.....	9, 13	†Elmira, N. Y.....		†Martins Creek Jct., Pa.....	
†Bangor, Pa.....		†Elmira Heights, N. Y.....	4, 5	Mauch Chunk, Pa.....	9
○Basking Ridge, N. J.....	4, 5	Endicott-Vestal, N. Y.....	1, 2	†McGraw, N. Y.....	
†Bath, N. Y.....	1, 2	†Espy, Pa.....		†Messengersville, N. Y.....	3, 6
†Bath, Pa.....				Millburn, N. J.....	
†Battle Creek, Mich.....	1, 2	<b>F</b>		†Miller, Pa.....	
†Beach Haven, Pa.....	15	†Factoryville, Pa.....		†Miller's Mill, N. Y.....	
†Belfast, Pa.....	4, 5	†Fargo, N. Y.....	1, 2	○Millington, N. J.....	
†Bergen Jct., N. Y.....	15	○Far Hills-Bedminster		○Mine Brook, N. J.....	
○Berkeley Heights, N. J.....	4, 5	†Far Hills-Bedminster		†Minetto, N. Y.....	
○Bernardsville, N. J.....	1, 2, 4, 5, 7, 8, 9, 10, 13	†Flicksville, Pa.....	4, 5		
†Berwick, Pa.....	15	†Fort Wayne, Ind.....	1, 2	×Montclair, N. J.....	
†Bethlehem, Pa.....	4, 5	†Forty Fort, Pa.....	4, 5	Montville, N. J.....	
Big Flats, N. Y.....	1, 2, 4, 5, 7, 8, 9, 10, 13	†Foster, Pa.....	4, 5	†Morchaine, N. Y.....	
Binghamton, N. Y.....		†Fox Hill, N. J.....	4, 5	†Morris Plains, N. J.....	3, 6
		†Fulton, N. Y.....		†Morristown, N. J.....	3, 6
				Moscow, Pa.....	3, 6
†Black Rock, N. Y.....	3, 6	<b>G</b>		Mountainhome, Pa.....	
Blairstown, N. J.....	7	Galena, N. Y.....	8	(See Cresco)	3, 6, 13
Blodgett Mills, N. Y.....	15	○Gillette, N. J.....		Mountain Lakes, N. J.....	3, 6
×Bloomfield, N. J.....	4, 5	○Gladstone, N. J.....		Mountain Station, N. J.....	3, 6
†Bloomsburg, Pa.....	3, 6	×Glen Ridge, N. J.....	3, 6	Mountain View, N. J.....	3, 6
B. & O. Jct., N. Y.....	3, 6	Gouldsboro, Pa.....		†Mount Arlington, N. J.....	
Boonton, N. J.....	3, 6, 7, 8, 10	†Grand Central, Pa.....		†Mount Bethel, Pa.....	4, 5
▲Branchville, N. J.....		†Greendell, N. J.....		Mount Morris, N. Y.....	3, 6
†Briar Creek, Pa.....		Greene, N. Y.....	8	Mount Pocono, Pa.....	
Brick Church, N. J.....	3, 6, 7, 8, 10	Greigsville, N. Y.....	4, 5	†Mount Tabor, N. J.....	
†Bridgeville, N. J.....		Groveland, N. Y.....	4, 5	○Murray Hill, N. J.....	
†Bridgewater, N. Y.....		Grove Street, N. J.....	3, 6		
Brisben, N. Y.....	8			<b>N</b>	
†Broadway, N. J.....		<b>H</b>		†Nay Aug, Pa.....	
Buck Hill Falls, Pa.....		*Hackettstown, N. J.....	4, 5	†Nazareth, Pa.....	
(See Cresco)	3, 6, 13	†Hallstead, Pa.....		†Netcong (Stanhope), N. J.	
Buffalo, N. Y.....	1, 2, 4, 5, 9, 12, 13	†Hampton, N. J.....	1, 2, 3, 6, 10, 13	Newark, N. J.....	1, 2, 3, 6, 7, 8, 10, 13
†Buffalo Jct., N. Y.....	11	†Harriet, N. Y.....		New Hartford, N. Y.....	4, 5
Bushkill, Pa.....		Harrison, See Newark, N. J.		New Milford, Pa.....	
		†Haynes, N. Y.....	3, 6	○New Providence, N. J.....	
<b>C</b>		Henryville, Pa.....		▲Newton, N. J.....	
†Cameron, Pa.....	4, 5	†Hercules, Pa.....	3, 6	†New Village, N. J.....	1, 2, 3, 6, 7, 8, 10, 11, 12
Campbell, N. Y.....	3, 6, 13	†Hicks Ferry, Pa.....	10, 11, 12	New York, N. Y.....	
Canadensis, (See Cresco)	10	Highland Ave., N. J.....		Niagara Falls, N. Y.....	
Candor, N. Y.....	10	Hoboken, N. J.....	7, 9	Nichols, N. Y.....	4, 5
†Caroline, N. Y.....	10	†Hollisters, Pa.....		Nicholson, Pa.....	4, 5
Catonk, N. Y.....	8	Homer, N. Y.....		†North Alexander, N. Y.....	
†Catawissa, Pa.....	8	Horseheads, N. Y.....		†North Arlington, N. J.....	8
†Cedarville, N. Y.....	8	†Hubbardsville, N. Y.....		North Brookfield, N. Y.....	
Chadwick, N. Y.....	3, 6	†Hunlock Creek, Pa.....		†North Darien, N. Y.....	15
†Changewater, N. J.....	7, 8			†Northumberland, Pa.....	1, 2, 8
Chatham, N. J.....	1, 2	<b>I</b>		†Norwich, N. Y.....	
Chenango Bridge, N. Y.....	1, 2	Indianapolis, Ind.....	1, 2	†No. 6 Jct., Pa.....	
Chenango Forks, N. Y.....	1, 2	Ithaca, N. Y.....	1, 2, 4, 5, 10, 13		
Chicago, Ill.....	1, 2			<b>O</b>	
†Chulasky, Pa.....	1, 2	Jackson Mich.....	1, 2	†Old Forge, Pa.....	
Cincinnati, Ohio.....	4, 5	Jamesville, N. Y.....	7	†Onatvia, N. Y.....	
†Cincinnati, N. Y.....	4, 5	Johnsonburg, N. J.....	3, 6	Orange, N. Y.....	3, 6
†Clarks Summit, Pa.....	1, 2	†Johnson City, N. Y.....		†Oswego, N. J.....	
Clayville, N. Y.....	8				
Cleveland, Ohio.....	4, 5	<b>K</b>		Owego, N. Y.....	4, 5, 10
†Clifton, N. J.....	3, 6	Kalamazoo, Mich.....	1, 2	†Oxford, N. Y.....	8
Cohocton, N. Y.....	4, 5	†Kearny Jct., N. J.....		†Oxford Furnace, N. J.....	
Conklin, N. Y.....	4, 5	†Kensington, N. Y.....			
Convent, N. J.....	3, 6	†Kenvil, N. J.....	7	<b>P</b>	
†Coopers, N. Y.....	4, 5	Killawog, N. Y.....	3, 6	†Painted Post, N. Y.....	
Corning, N. Y.....	1, 2, 4, 5, 7, 9	Kingsland, N. J.....	4, 5	Paradise Falls, Pa.....	
†Cortland, N. Y.....		Kingsley, Pa.....		(See Cresco)	3, 6, 13
†Cortland Jct., N. Y.....	8	†Kingston, Pa.....		Paris, N. Y.....	8
Coventry, N. Y.....				Passaic, N. J.....	3, 6
†Craigs, N. Y.....		<b>L</b>		Paterson, N. J.....	3, 6
▲Cranberry Lake, N. J.....	3, 6, 13	▲Lafayette, N. J.....		○Peapack, N. J.....	
Cresco, Pa.....		†Lake Hopatcong, N. J.		†Pen Argyl, Pa.....	
		(Mount Arlington).....		†Perkinsville, N. Y.....	9, 10, 13, 14
Dalton, Pa.....	4, 5	†Lake Junction, N. J.....		†Philadelphia, Pa.....	
Dansville, N. Y.....	4, 5	†Lakeside, N. Y.....		†Phillipsburg, N. J.....	
†Danville, Pa.....	15	†Lamson, N. Y.....	4, 5		
†Delabole, Pa.....		Lancaster, N. Y.....	9		
		Lansdale, Pa.....			

▲Located on Sussex Branch. See Suburban time table.

×Located on Montclair Branch. Tables 3, 6, show service to and from Newark, N. J., the junction point. (See Suburban time table.)

○Located on Gladstone Branch. Tables 3, 6, show service to and from Summit, N. J., the junction point. (See Suburban time table.)

\*Located on Phillipsburg Branch. Suburban time table shows service to and from Washington, N. J., the junction point. (Local Bus Service between Washington, N. J. and Phillipsburg, N. J.)

†Located on Boonton Line. (See Suburban time table.)

‡Located on Main Line. (See Suburban time table.)

†Freight Service only. (For information consult General Offices or nearest Traffic Department representative shown on page 15.)

# GENERAL OFFICES—140 CEDAR STREET, NEW YORK 6, N. Y.—TELEPHONE BARCLAY 7-2500

## TRAFFIC DEPARTMENT

**C. F. FARMER**, Vice President, New York  
**H. C. SCHMIDT**, General Freight Traffic Manager, New York

## FREIGHT

**GEORGE HERBERT**, Asst. Freight Traffic Manager.....New York  
**HARRY F. DOYLE**, Asst. Freight Traffic Manager.....New York  
**W. M. MacPHERSON**, Asst. Freight Traffic Manager.....Buffalo, N. Y.  
**J. H. CHRISTY**, Western Traffic Manager.....Chicago, Ill.  
**L. A. DALTON**, General Dairy Agent.....Chicago, Ill.  
**WILLIAM K. MARTIN**, Asst. Gen. Freight Agent.. } New York  
**W. H. BROWNE**, Foreign Freight Traffic Mgr..... } Pier 13, N. R. ft. New York  
**W. F. AHEARN**, Foreign Freight Agent..... } Cortlandt Street New York

**JOSEPH S. SIKORA**, Freight Traffic Manager (Rates and Divisions).....New York  
**E. M. SELLERS**, General Freight Agent.....New York  
**W. J. STUMPF**, Assistant General Freight Agent.....New York  
**E. J. McGARRY**, Assistant to General Freight Agent.....New York  
**L. F. HEINECK**, General Coal Freight Agent.....New York  
**J. E. HAYDEN**, Coal Freight Agent.....New York  
**L. E. TENNEY**, Manager Commercial Development.....New York  
**J. A. CORCORAN**, Industrial Agent.....New York

## PASSENGER

**W. H. DOMINICK**, Passenger Traffic Manager, New York

**W. E. CARBONE**, General Passenger Agent.....New York  
**C. F. FELTHAM**, Gen. Eastern Pass. Agent, 500 Fifth Avenue (18).....New York

**M. P. NELSON**, Manager Mail, Express, Baggage and Milk Traffic.. Hoboken, N. J.  
**R. F. IRWIN**, General Agent, Passenger Department.....New York

## DINING CAR DEPARTMENT

**R. H. LLOYD**, Supt. Dining Car Department, Hoboken, N. J.

## TRAFFIC REPRESENTATIVES

**Albany 7, N. Y.**—Room 5, Del. & Hud. Bldg.—Phone Albany 3-4517  
*W. P. CAMPION, General Agent*

**Binghamton, N. Y.**—Lackawanna Station—Phone Binghamton 4-1311  
*W. E. DOWNS, Division Passenger Agent*

**Boston 14, Mass.**—N. Station Office Bldg., 150 Causeway St.—Phone Capital 7-8970  
*DANIEL L. NORTON, General Agent*

**Brooklyn, N. Y.**—Pier 13, N. R. (ft. of Cortlandt St.) New York 7—Phone Barclay 7-2500  
*HAROLD J. AMBRUSTER, City Freight Agent*

**Buffalo 2, N. Y.**—11 W. Genesee St.—Phone Cleveland 2488  
*NEIL A. MITTS, General Agent, Passenger Department*

**Chicago 4, Ill.**—327 South LaSalle Street—Phone WA bash 2-3443  
*C. R. HARTSHORN, Asst. General Freight Agent*  
*W. J. NOLAN, Asst. General Freight Agent*  
*GEORGE A. STAPLES, City Passenger Agent*

**Cincinnati 2, Ohio**—1332 Enquirer Bldg., 617 Vine Street—Phone Main 0730  
*CLINTON C. RAU, General Agent*

**Cleveland 14, Ohio**—310 Park Bldg.—Phone Main 1-0435  
*RAY K. LOVITT, General Agent*

**Detroit 26, Mich.**—730 Lafayette Bldg.—Phone Cadillac 6727  
*A. H. SNIDER, General Agent*

**Easton, Pa.**—402 Northampton Street—Phone Easton 9021  
*Z. LEE MATHERS, General Agent*

**Elmira, N. Y.**—Lackawanna Station—Phone Elmira 6261  
*F. W. SCHEPPMANN, Traveling Passenger Agent*

**Houston, Texas**—435 Bankers Mortgage Building—Phone Atwood 0082  
*CHARLES D. SANTOR, General Agent*

**Indianapolis 4, Ind.**—622 Board of Trade Bldg.—Phone Franklin 8280  
*SAMUEL J. NEILL, General Agent*

**Kansas City 6, Mo.**—403 Railway Exchange Bldg.—Phone Victor 2226  
*BRUCE L. DILL, General Agent*

**Los Angeles 14, Calif.**—108 West Sixth Street—Phone Tucker 2067  
*J. D. GIVEN, General Agent*

**Milwaukee 3, Wis.**—1315 Majestic Bldg.—Phone Marquette 8-6410  
*GROVER C. HOWE, General Agent*

**Minneapolis 1, Minn.**—940 Metropolitan Life Building—Phone Main 5301  
*A. D. LEONARD, General Agent*

**Newark 2, N. J.**—  
*GEORGE R. MARR, Division Freight Agent*  
 Lackawanna Station—Phone Humboldt 2-2100  
*R. H. TAYLOR, Division Passenger Agent*  
 Griffith Bldg., 605 Broad Street, Rooms 502-503—Phone Market 3-3440

**New Haven 10, Conn.**—Malley Bldg., 902 Chapel St.—Phone New Haven 6-2466  
*WILLIAM J. WYNNE, General Agent*

**New York 7, N. Y.**—Pier 13, N. R. (foot of Cortlandt St.) New York 7, N. Y.  
 Freight Department Phone Barclay 7-2500  
*ELLIOTT E. BROTHERS, General Agent*  
*GEORGE L. BOLTON, Dairy Agent*

**500 Fifth Avenue at 42nd Street—Room 842, New York 18, N. Y.**—  
 Passenger Department Phone Lackawanna 4-0234  
*W. H. WEBER, District Passenger Agent*

**Paterson 3, N. J.**—Lackawanna Station—220 Marshall St. (near Main St.)—  
*W. L. WEHR, Ticket Agent* Phone Sherwood 2-1609

**Philadelphia 2, Pa.**—1606 Finance Bldg.—Phone Bell, Rittenhouse 6-2848—2849  
*HOWARD A. WHITNEY, General Agent*

**Pittsburgh 22, Pa.**—503 Park Bldg.—Phone Atlantic 1-0463  
*J. A. MCCOY, General Agent*

**Portland 5, Ore.**—903 Terminal Sales Bldg.—Phone Beacon 3191  
*FRED W. DOST, Traveling Freight Agent*

**St. Louis 1, Mo.**—1971-1972 Railway Exchange Bldg.—Phone Main 2460  
*W. A. BRANNING, General Agent*

**San Francisco 5, Calif.**—805 Monadnock Bldg.—Phone Sutter 1-7515  
*A. B. COLLINS, General Agent*

**Scranton 3, Pa.**—Lackawanna Station—Phone Scranton 5251  
*E. C. ENNIS, Division Freight Agent*  
*J. H. VAN WIE, Division Passenger Agent*

**Seattle 1, Wash.**—707 Jones Bldg.—Phone Main 3055  
*R. A. WARREN, General Agent*

**Syracuse 2, N. Y.**—Lackawanna Station—Phone Syracuse 2-9211  
*H. RUSSELL O'HARA, Division Freight Agent*  
*O. J. STINGER, City Passenger Agent*

**Toledo 4, Ohio**—1301 Toledo Trust Bldg.—Phone Adams 1817  
*HAROLD H. BALK, General Agent*

**Toronto 1, Ont.**—1806 Royal Bank Bldg.—Phone Elgin 7635  
*J. S. BRANNING, Canadian Agent*

# Lackawanna Railroad



# Lackawanna Railroad



THE ROUTE OF  
*Phoebe Snow*

## TIME TABLES

APRIL 30, 1950

THE ROUTE OF  
*Phoebe Snow*

## TIME TABLES

APRIL 30, 1950

Time Shown in this folder is EASTERN STANDARD TIME  
One hour earlier than DAYLIGHT SAVING TIME

Form 10

Time Shown in this folder is EASTERN STANDARD TIME  
One hour earlier than DAYLIGHT SAVING TIME

Form 10