

CHICAGO • SAN FRANCISCO

THE VISTA-DOME

*California Zephyr*

CHICAGO • SAN FRANCISCO

THE VISTA-DOME

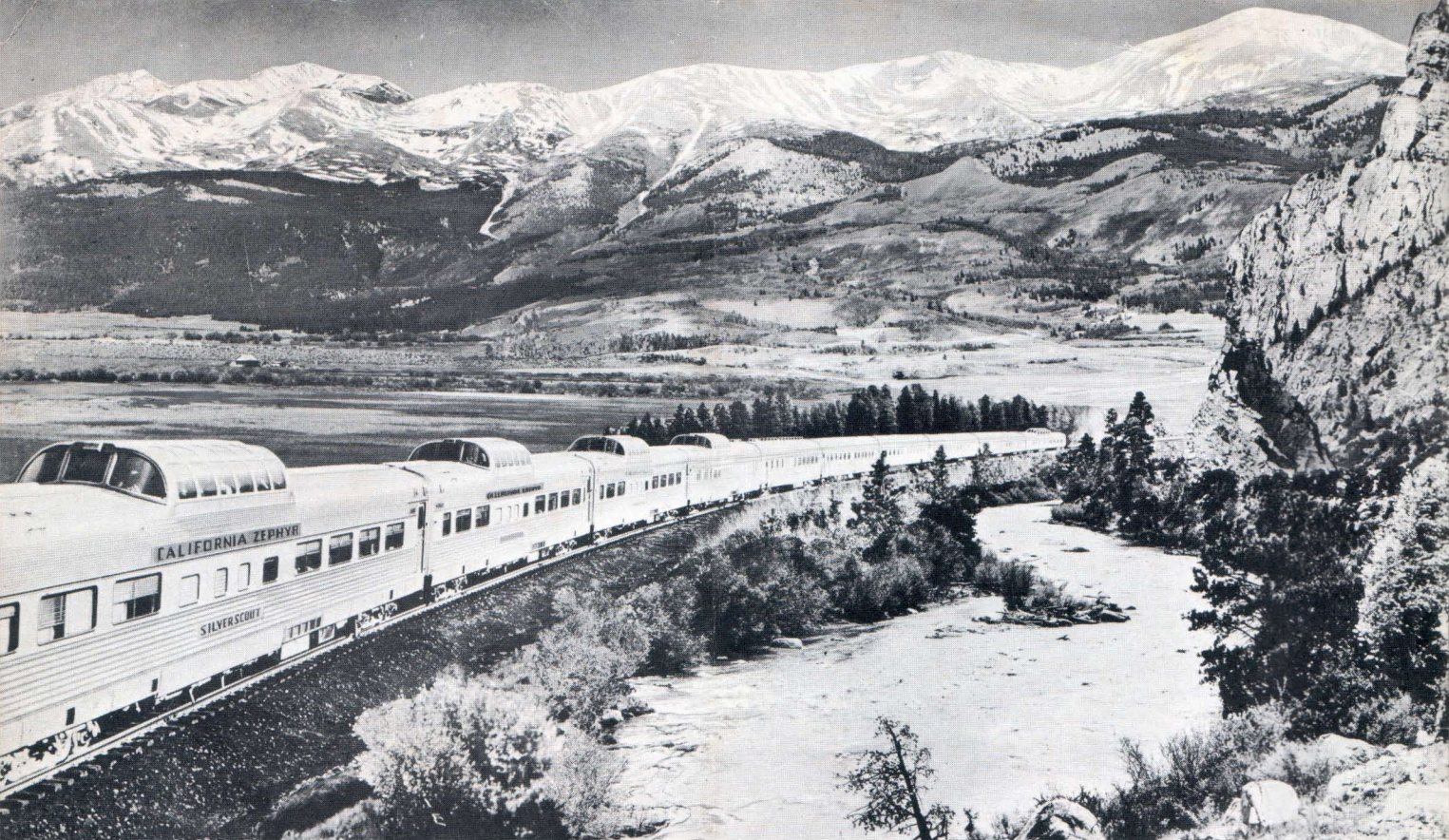
*California Zephyr*



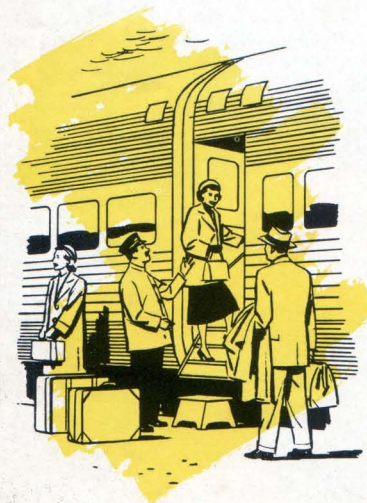
BURLINGTON • RIO GRANDE  
WESTERN PACIFIC

BURLINGTON • RIO GRANDE  
WESTERN PACIFIC





## The most talked-about train in the country!



Wherever smart travelers meet, you hear enthusiastic comments about the California Zephyr — the only streamliner between Chicago and San Francisco with *five* Vista-Domes.

Many mention the Zephyr's streamlined beauty . . . the luxury of its appointments . . . the expert service of friendly, hand-picked crews. Often they praise the colorful dining cars and their distinctive cuisine . . . the congenial atmosphere of the club-lounge cars.

But *everyone* who has ridden this famous train always talks about the fabulous scenery along its route and about the five glass-enclosed Vista-Domes which were designed to take full advantage of this wonderfully scenic route.

So this booklet can only suggest the delights awaiting you aboard the California Zephyr. Read it, please, as your introduction to the most talked-about train in the country . . . your invitation to ride the California Zephyr — soon!





## A train designed and scheduled for sightseeing!

Westbound or eastbound . . . you enjoy Vista-Dome views of the Colorado Rockies and California's Feather River Canyon *during daylight hours!*

Designed for sightseeing, the California Zephyr has five Vista-Domes, each seating 24 passengers. Here you ride in air-conditioned comfort, high above the rails as though you were in a glass-enclosed "pent-house". Even seasoned travelers are amazed and thrilled when they first go upstairs and discover what a wonderful difference the Vista-Dome makes to cross-country travel!

*The California Zephyr winds up the east slope of the Colorado Rockies and crosses the Continental Divide by way of world-famous Moffat Tunnel.*



*The California Zephyr crosses "The Father of Waters" at Burlington, Iowa.*

*Designed for sightseeing.*





Seats in the California Zephyr's Vista-Domes are *not* sold . . . are *not* reserved. They are extra seats which chair-coach, as well as Pullman, passengers may use whenever they wish.

And unlike most transcontinental trains, the Vista-Dome California Zephyr has been scheduled so that you enjoy hundreds of miles of spectacular mountain scenery during daylight hours.

From your vantage point upstairs in one of the Vista-Domes, you will be entranced by the ever-changing panorama, as you wind through the canyons, tunnels and mile-high alpine valleys of the colorful Colorado Rockies . . . as you cross the High Sierra and travel almost the entire length of

California's rugged Feather River Canyon . . . as you speed across the fertile Sacramento Valley and San Joaquin Valley to Oakland and San Francisco, "the city by the Golden Gate."

At night, while you're sleeping peacefully in your Pullman berth or deep-cushioned reclining chair car seat, you speed smoothly and swiftly across the farmlands of Iowa and Nebraska . . . across the deserts of Utah and Nevada.

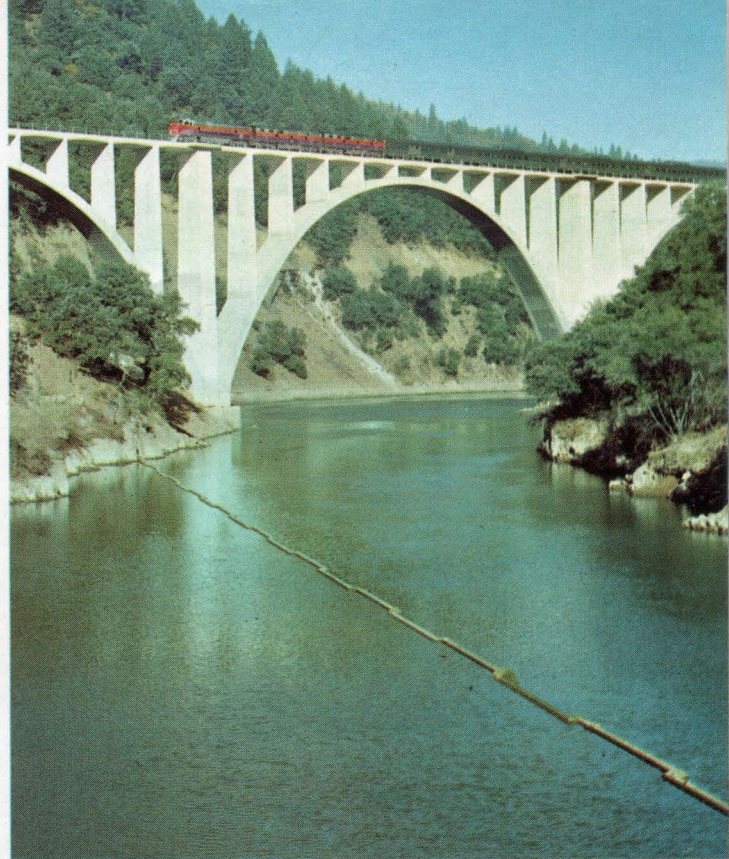
But the fascination of the Vista-Dome does not end with nightfall. After dark, as the California Zephyr glides smoothly and silently across the miles, you will be impressed by the beauty of the moonlit countryside and the passing of trackside signals and distant farmhouses.







*California Zephyr glides down the western slope of the Sierra Nevada via Feather River Canyon.*



*North Fork Bridge across the Feather River. This graceful, three-span bridge is the largest structure of its kind on any railroad in the country.*

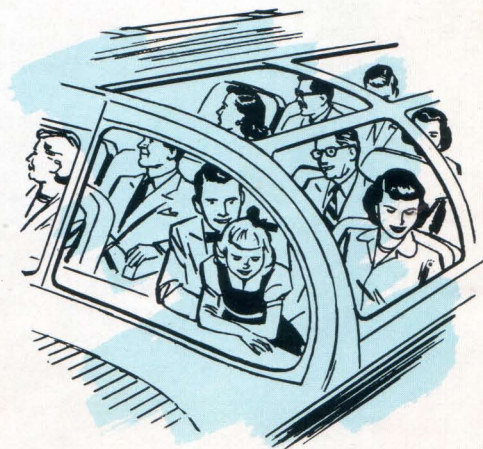
## **Upstairs in one of the California Zephyr's five Vista-Domes,**

*You look up...look down...look all around!*

The Vista-Dome provides an entirely new perspective for train travel... opens up new vistas... affords unobstructed panoramic views of the great scenic West.

As the California Zephyr travels the most scenic route between the Great Lakes and the Golden Gate, you look up, look down, look all around. You see majestic, snow-capped mountains... great plains... canyons and cliffs... trees and trails... rushing mountain streams... herds of deer and antelope... vast stretches of virgin forest. It's a great show and upstairs in the Vista-Dome you have the best seat in the house!

If you are a photographer, expert or amateur, be sure to take plenty of film with you, for the Vista-Dome... and this scenic route... offers camera fans many opportunities for the "shot of a lifetime"!







## The San Francisco Cable Car Room

A fascinating buffet lounge car, as gay and colorful, and as much fun, as San Francisco itself! This was designed for the enjoyment of both Pullman and Chair Coach passengers, a convivial gathering place for simple inexpensive meals and all types of refreshing beverages. Open from early morning until late in the evening. Service in this car, as in every car on the train, is one of the features that has made the California Zephyr so famous. It is courteous and efficient, for it is provided by those who are proud of their train and are anxious that your trip be thoroughly enjoyable in every respect.





# A luxury train in every respect!

*The Three-Level, Vista-Dome Observation Lounge Car is the epitome of luxury travel. Atop the car is one of the two Vista-Domes reserved for Pullman passengers; the main floor (shown here) offers deeply cushioned chairs, settees, tables and writing desk. On the lower level, there is a small, informal cocktail bar.*



*The fresh carnations, snowy white linen and sparkling silverware are evidence of the care taken to make meals in the Dining Car a delightful highlight of your trip. The menu offers a choice of traditional favorites as well as regional delicacies, cooked to your order and served piping hot. Advance dinner reservations eliminate waiting in line for a table in the Dining Car.*

*The small Cocktail Bar (shown below) is beneath the Observation Car's Vista-Dome. Its informal, convivial atmosphere makes it a favorite place with Pullman passengers for before-dinner cocktails and nightcaps. Lighting is subdued; service is quietly efficient.*







**Whether you travel for business or pleasure...**

## *The California Zephyr highlights your trip!*

Traveling aboard the California Zephyr is much more than "just another train trip". It is an exciting two-day vacation in itself, one you will long remember.

Westbound, the California Zephyr departs from Chicago in mid-afternoon, crosses the Mississippi in early evening and arrives at mile-high Denver about breakfast-time next morning.

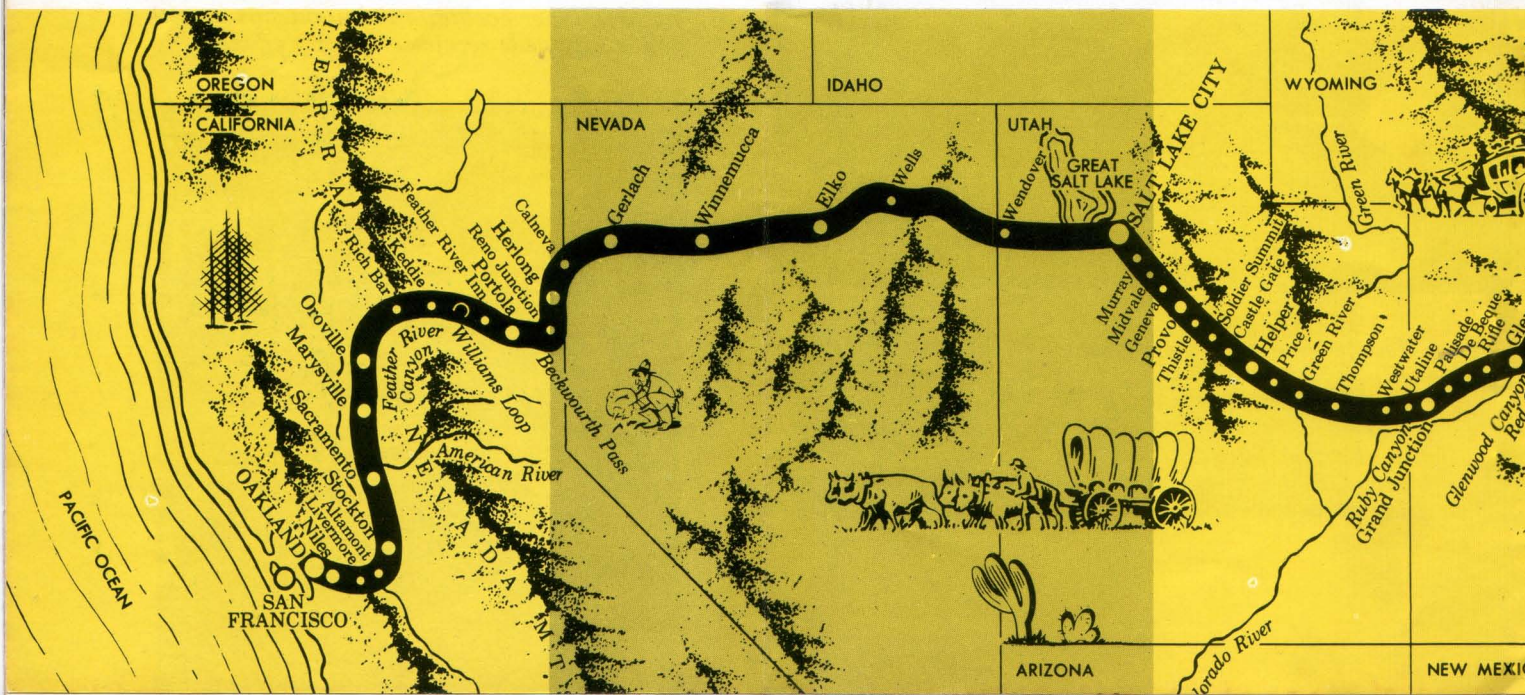
From Denver, it climbs the front range of the mighty Colorado Rockies (4,000 feet up in fifty miles), penetrates the Continental Divide through the 6.2-mile Moffat Tunnel and then, for over 200 fascinating miles, winds through vast stretches of evergreen forest and the rock-walled canyons of the Colorado River.

Byers, Gore and Red Canyons present a succession of spectacular close-ups and sweeping vistas of towering cliffs, deep gorges and rushing streams, amid the most magnificent mountain scenery in the country. And then, the most wonderful of all Colorado River chasms . . . 18-mile Glenwood Canyon

. . . whose beauty inspired the revolutionary idea of the Vista Dome.

Near the western border of Colorado, the picturesque upper canyons broaden into Grand Valley, famed for its ranches and peach orchards. In brilliant Ruby Canyon, the California Zephyr enters Utah, turning westward to cross the Wasatch plateau at Soldier Summit; then glides down into Great Salt Lake valley, reaching Salt Lake City in late evening.

Next morning, shortly after the train enters California, it crosses the Sierra Nevada at Beckwourth Pass. Then, for mile after mile, the route follows the twists and turns of the turbulent Feather River—at times at river's edge, then hundreds of feet above the bottom of the gorge. The rugged sides of the canyon are densely covered with pine and spruce; in the distance are the slopes and peaks of the majestic Sierra Nevada; now and then a tunnel which opens up new vistas; here and there historic sites of the forty-niners' gold strikes.





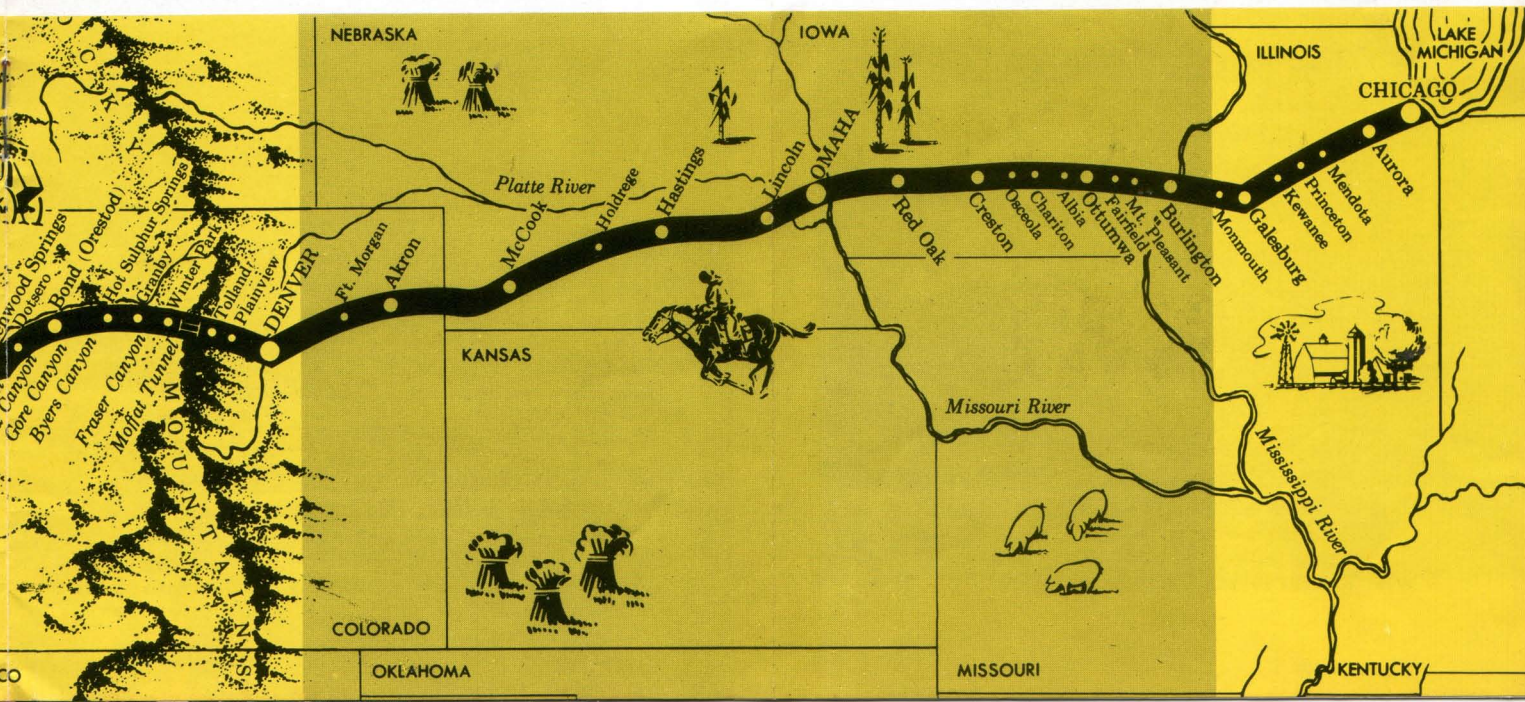
And, as you marvel at the grandeur of this scenic route, you'll be glad you're aboard the train designed *and* scheduled for sightseeing!

The western terminus of the California Zephyr is the city of Oakland, on the shore of San Francisco Bay. Here, passengers detrain and board a de luxe motor coach for San Francisco, "the city loved around the world." During this brief trip you will travel for over eight thrilling miles across the famous Bay Bridge, longest in the world. This gay, sophisticated metropolis offers visitors an endless variety of attractions, including Chinatown, the fascinating cable cars, marvelous restaurants, fine hotels and wonderful vistas of the Bay and its bridges from the tops of its famed hills.

And, within a short distance of San Francisco, you can visit the redwood groves, beautiful Monterey Peninsula, the Mother Lode Country, the great universities and the vineyards of Northern California. Eastbound, you leave San Francisco in the morning by motor coach for Oakland. Here you board the California Zephyr which traverses Feather River Canyon before nightfall and next day reveals the beauties and wonders of the majestic Colorado Rockies. The final morning of your trip is featured by the crossing of the Mississippi River, with early afternoon arrival at Chicago, metropolis of the midwest on the shores of Lake Michigan. In both directions, the schedule is purposely arranged to show you *all* of the scenic route across America.



*Passengers aboard the California Zephyr enjoy a thrilling, unobstructed, Vista-Dome view of the unspoiled wilderness in Feather River Canyon.*





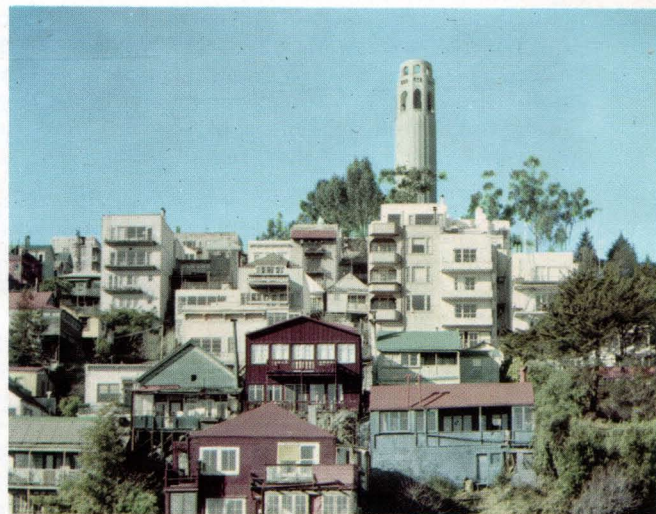


*Two of the reasons visitors love San Francisco: the enchanting little cable cars and Chinatown, a fascinating Asiatic city with picturesque restaurants and shops filled with treasures from the Orient.*



*Visiting San Francisco, you travel, often by cable car, from one hill to another, each one offering a spectacular view of the dazzling white city, the broad sweep of the Bay, the great bridges or the blue Pacific.*

## The fabulous city of *San Francisco*



*From the top of Coit Tower on Telegraph Hill (one of San Francisco's fourteen hills!), you get a dramatic view of both bridges, the Berkeley-Oakland Hills to the East, the Pacific Ocean to the West and all of San Francisco.*



*San Francisco is famous for its many wonderful restaurants. And some of the best are to be found on Fisherman's Wharf, where you can look out at the fishing fleet as you enjoy fresh crab, abalone and other delicacies from the Pacific.*





**...the heart of a great**

*vacation area*

A few hours north of San Francisco's famed Golden Gate Bridge (shown at left), you come to the Redwood Empire, great forests of giant redwoods, the oldest living things on the face of the earth. And on your way, you'll drive through lovely valleys, their slopes covered with vineyards, groves of oak and fruit orchards.







## Yosemite National Park

**...just a few hours  
from San Francisco**

Yosemite National Park, southeast of San Francisco, is in the very heart of the mighty High Sierra. Here you will marvel at Yosemite Falls with its sheer drop of 2425 feet, will hike along the trails which wind through the lovely Valley, will take motor tours to the many places of interest and great natural beauty within the Park's 1189 square miles.

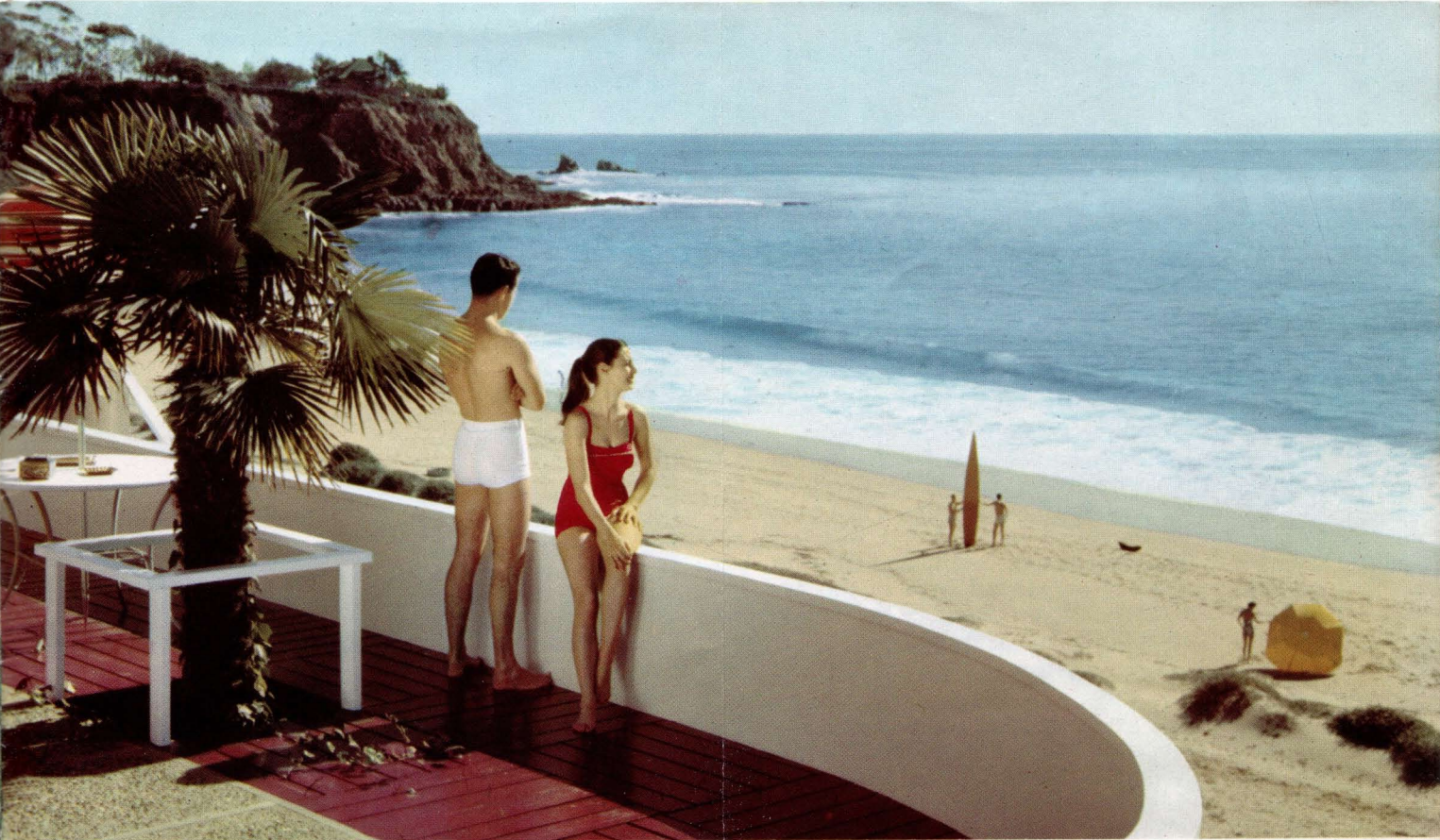
## Monterey Peninsula ...the Riviera of North America



South from San Francisco, you travel through the lush Santa Clara Valley, cross the Santa Cruz Mountains and arrive at the shores of Monterey Bay. This is the land of the wind-

swept Monterey cypress, lovely and unspoiled "Seventeen Mile Drive," picturesque Carmel and golf courses so close to the Pacific that the ocean is a water hazard!





**Glamorous, sun-kissed**

## *Southern California*

**NOTE:** When you travel to San Francisco, you can arrange with your Travel Agent to include a trip to Southern California (via Monterey Peninsula or Yosemite, if you wish) without additional rail fare. (Or travel East from most California points via San Francisco without additional rail fare.)



*A premiere at world-famous Grauman's Chinese Theatre on glamorous Hollywood Boulevard is typical of the many exciting events you can attend during your visit to Southern California.*



*The snow-capped peaks of the San Gabriel Range overlook sun-drenched orange groves. Where but in Southern California can you go swimming in the morning and be skiing the afternoon of the same day!*





## Room to roam!

There is room to roam aboard the California Zephyr! Yes, *extra* room has been provided throughout the train for the convenience and comfort of the passengers — so you never will feel crowded in this popular transcontinental train. In addition to the 120 unreserved seats in the five Vista-Domes, there is extra room in the buffet-lounge and observation-lounge cars.

Another feature that eliminates crowding is the system of evening dinner reservations. The Zephyrette, the train's official hostess, reserves space in advance for all passengers, and the steward notifies them over the public address system when their reservations are ready. There is no tiresome waiting in line outside the diner.



*A roomette . . . an economical private room for the individual traveler. New-design, pre-made bed can be lowered or raised without opening door.*

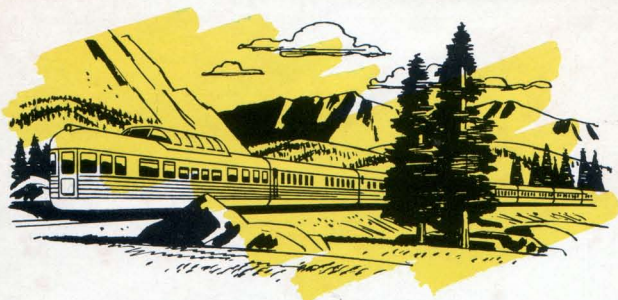


*Reserved seat chair coaches are unusually spacious, quiet and comfortable. The deep-cushioned reclining chairs have adjustable leg and foot rests and folding arm rests.*



*Connecting double-bedrooms provide berths for four, a spacious "living room" during the day, and two enclosed lavatories.*





**Now...the California Zephyr  
invites you to**

*The travel experience  
of a lifetime!*

If you're planning a trip to or from California . . . this is *your* opportunity to discover the *extra* pleasures of California Zephyr travel.

There is so much to see . . . so much to do . . . aboard the California Zephyr that many passengers have made the trip again and again . . . Everybody has such a good time! It is either a highlight of a vacation trip or an exceptionally relaxing and interesting interlude in a business trip.

You're invited to travel aboard the most talked-about train in the country. We hope you'll accept that invitation—soon!



**BURLINGTON**

W. F. Burke  
General Passenger Traffic Manager  
Chicago, Illinois



**RIO GRANDE**

H. F. Eno  
Passenger Traffic Manager  
Denver, Colorado



**WESTERN PACIFIC**

James J. Hickey  
Director of Passenger Sales  
San Francisco, Calif.

## **Be sure to bring along your camera!**

*(there's nothing like a Vista-Dome  
for dramatic photography)*

The glass in the California Zephyr's Vista-Domes has been tinted to cut down on the sun's glare.

Professional photographers recommend that, in addition to the filter instructions contained in each package of color film, a color compensating filter such as Kodak No. CC30-R also be used to obtain better results.

Certain adjustments in camera stops, as shown below, are also found to be helpful:

Method of Exposure Determination		Exposure Increase in Camera Stops		
		Color Film plus Kodak CC30-R filter	Color Film no filter	Black-and- White Film no filter
Exposure Meter	Top Windows	$\frac{2}{3}$ stop	none	none
	Side Windows	$\frac{2}{3}$ stop	none	none
Exposure Tables or Guides	Top Windows	2 stops	$1\frac{1}{2}$ stops	1 stop
	Side Windows	$1\frac{1}{2}$ stops	1 stop	1 stop

**California Zephyr Movies**—Motion pictures of a California Zephyr trip between Chicago and San Francisco are available in black and white, 8 mm. silent and 16 mm. sound. For complete information write Dept. 17-18, Black Hawk Films, Inc., Davenport, Iowa.

*(Note: Neither film nor filters are on sale aboard the train.)*





*As the California Zephyr travels for hundreds of miles through the Colorado Rockies, passengers enjoy a spectacular view of great gorges, towering peaks, rushing streams and lovely Alpine valleys.*