

**CANADIAN  
NATIONAL  
RAILWAYS**



YACHTING ON HALIFAX HARBOR  
Halifax, Nova Scotia.



## DINING CAR SERVICE

### Menu A la Carte



CANADIAN SARDINES, FANCY PACK 25c	IMPORTED SARDINES 60c	
OLIVES 20c	CELERY 20c	TOMATO JUICE 20c
MIXED PICKLES 15c	CHOW CHOW 15c	
<b>SOUPS:</b> TUREEN 30c; CUP 20c		
TOMATO	VEGETABLE	MOCK TURTLE
(Served to order in 10 minutes)		
<b>FISH:</b> FRESH OR SMOKED 70c		
<b>BROILED STEAKS, CHOPS, ETC.</b>		
SIRLOIN STEAK \$1.50	CLUB STEAK \$1.00	
CALF'S LIVER WITH BACON 65c		
LAMB CHOPS 65c	BROILED BACON 55c	
SUGAR CURED HAM 65c	BACON or HAM WITH FRIED EGGS 65c	
<b>EGGS AND OMELETTES</b>		
EGGS: BOILED, FRIED or SCRAMBLED 35c		
POACHED ON TOAST 40c	SHIRRED 40c	
OMELETTES: PLAIN 45c	SPANISH 60c	HAM 60c
BACON 60c	PARSLEY or CHEESE 50c	
<b>COLD MEATS</b>		
ASSORTED COLD MEATS 75c; WITH POTATO SALAD 90c		
<b>VEGETABLES</b>		
POTATOES: BOILED or MASHED 20c		
COTTAGE FRIED 25c (10 minutes)	HASHED BROWNEED 25c (10 minutes)	FRENCH FRIED 25c (10 minutes)
CANADIAN PEAS 20c	STEWED TOMATOES 20c	SWEET CORN 20c
<b>SALADS, ETC.</b>		
SLICED TOMATO 35c	POTATO 25c	COMBINATION SALAD 40c
HEAD LETTUCE 35c	LOBSTER SALAD "NATIONAL" 65c	
(Dressing without Oil, Mayonnaise or French Dressing)		
<b>DESSERTS</b>		
ENGLISH PLUM PUDDING, HARD SAUCE 30c	ICE CREAM WITH WAFERS 25c	
<b>PRESERVES, ETC.</b>		
ASSORTED JAMS AND JELLIES 15c	ORANGE MARMALADE 15c	
HONEY 25c		
PRESERVED FIGS 30c; WITH CREAM 40c		
CANADIAN CHEDDAR, CANADIAN CREAM, FRENCH ROQUEFORT or CAMEMBERT CHEESE WITH CRACKERS 30c		
WHITE, GRAHAM or FRUIT BREAD WITH BUTTER 15c	HOT ROLLS 15c	
INDIVIDUAL SEALED BOTTLE SPECIAL MILK 15c		
TEA (Per Pot) 25c	COFFEE (Per Pot) 25c	DEMI TASSE 15c
COCOA (Per Pot) 25c		
INSTANT POSTUM (Per Pot) 25c		
MALTED MILK 20c	YEAST (Per Cake) 10c	

Afternoon Tea Service 3.30 p.m. to 4.30 p.m. Standard Time

No order served for less than 25c to each person.

Waiters are strictly forbidden to take or serve verbal orders.

Guests will confer a favour by requesting meal check blank.

This card enclosed in envelope ready for mailing may be had on application to Dining Car Steward. It will be appreciated if patrons will report any unusual service or attention on the part of employees of Sleeping, Dining and Parlor Cars to Superintendent at Montreal, Que., as this will enable the Management to recognize exceptional efficiency, which we desire to encourage in our service.

W. W. SWINDEN, General Superintendent,  
Montreal, Que.



## Beverages, Cigars and Cigarettes

---

	Splits	Pints	
<b>Mineral Waters, Etc.</b>	Mineral Waters (Various).....	20c	35c
	Vichy-Celestins.....	20c	30c
	Club Soda.....	15c	20c
	Sweet Ginger Ale.....		25c
	Dry Ginger Ale.....	15c, 20c, 25c,	30c
	Apple Cider Soda.....		25c
	Ginger Beer.....		15c
	Orange Crush.....	15c	
	Lemon Crush.....	15c	
	Lime Crush.....	15c	
Coca Cola.....	15c		

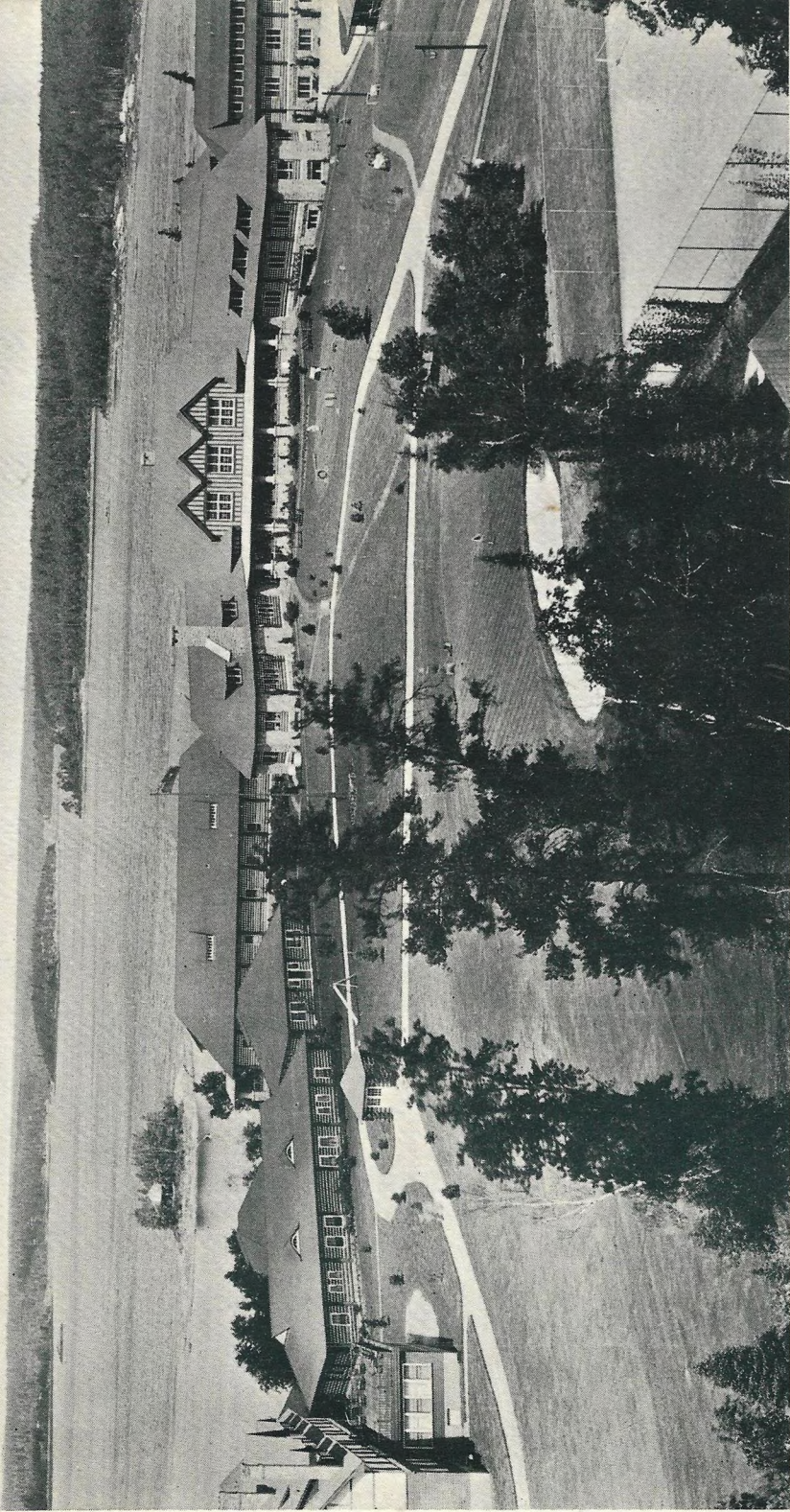
	Individuals
Grape Juice.....	20c

	Glass
Lemonade Plain.....	20c
Lemonade with Soda.....	30c
Lemonade with Mineral Water..	35c
Bromo Seltzer.....	15c

<b>Cigars and Cigarettes</b>	Imported Cigars.....	25c
	Choice Havana Cigars.....	10c, 2 for 25c
		15c and 20c
	Cigarettes.....	20c and 25c per pkg.



**CANADIAN  
NATIONAL  
RAILWAYS**



**MINAKI LODGE**

Minaki, Ontario.

In the Lake of the Woods region, 114 miles  
east of Winnipeg.