

# Six Nights at Good California Hotels—A Day and Night Cruising on the Blue Pacific



Rio Grande train deep in the Colorado Rockies.



Cosmopolitan San Francisco seen from Twin Peaks



S.S. "Yale" approaching the Golden Gate.

Including all necessary expenses from Chicago (Note) From Kansas City or Omaha (Note)

Two in a lower berth (each).....	\$ 70.83	\$139.63	.....
One in lower berth.....	\$ 35.42	\$ 69.82	.....
One in an upper berth.....	\$ 17.71	\$ 34.91	.....

EXTRA CHARGE FOR SINGLE ROOMS AT HOTELS. \$6.00  
(Note) Meals and berth not included between Omaha and Kansas City.

### COST OF COMPLETE TOUR

Ar. Chicago	7:15 P.M.	Burlington	Saturday
Ar. Omaha	6:50 A.M.	Burlington	Saturday
Ar. Denver	5:00 P.M.	Burlington	Friday
Ar. Denver	2:35 P.M.	D.&R.G.W.	Friday

Except for a comprehensive motor tour Sunday morning, all your time here is your own to enjoy the carnival chaos. Or perhaps you'd like to cross the border into Mexico for a few hours or longer in Agua Caliente or Tia Juana or both.

Ar. San Francisco 9:00 A.M. "S.S. Yale" Monday  
Lv. San Diego 9:00 A.M. "S.S. Yale" Monday

You'll like this. A bracing day at sea; enjoying surf-boards and other deck games; watching the sea-gulls and the flying fish; as the YALE plows northward.

Everybody out on deck tomorrow morning as we enter San Francisco Bay through the Golden Gate. . . . an interesting sight . . . impressive moments.

Ar. San Francisco 11:00 A.M. "S.S. Yale" Tuesday

Our hotel—the Whitcomb—is in the heart of the theatre district, and adjoining the Civic Center. A motor trip this afternoon includes downtown San Francisco, Twin Peaks, the Presidio, Cliff House and other points of great interest.

This evening and all day tomorrow you have to your self—to visit Chinatown, go shopping, or what have you, in this big interesting Pacific port.

Lv. San Francisco 7:00 P.M. West. Pac. Wednesday

Through Northern California; across the High Sierras; through Nevada and a wide swath of the desert; along the shore of Great Salt Lake—reaching Salt Lake City Thursday evening.

Friday is the grand scenic climax of the tour. All day we ride through the mountains; following rushing rivers through many a steep-walled canyon; deep in the Colorado Rockies with sensational scenery constantly in view. Climbing up the West slope of the Continental Divide amid a confusion of sky-scraping peaks; passing through the six-mile Moffet Tunnel; coasting down the forested East slope through the old mining towns—a never-to-be forgotten day of sight-seeing on a grand scale.

Ar. Denver 2:35 P.M. D.&R.G.W. Friday

Time here for visiting the shopping district and downtown Denver, or a sight-seeing trip if you desire.

Lv. Denver 5:00 P.M. Burlington Friday

Aboard the crack "Artistocrat" through Colorado, Nebraska, and Iowa.

Ar. Omaha 6:50 A.M. Burlington Saturday

Ar. Chicago 7:15 P.M. Burlington Saturday

### TOUR X—14 Days

Leaving Chicago, Sundays, June 16-30, July 7-21 and Aug. 4

Lv. Chicago	10:20 A.M.	Santa Fe	Sunday
Lv. Kansas City	12:01 Midnight	Santa Fe	Monday
Ar. Williams	7:15 A.M.	Santa Fe	Tuesday
Lv. Grand Canyon	8:00 P.M.	Santa Fe	Tuesday
Ar. Los Angeles	12:30 P.M.	Santa Fe	Wednesday
Lv. Los Angeles	9:15 A.M.	Santa Fe	Saturday

Ar. Williams 7:15 A.M. Santa Fe Tuesday

Automobiles meet us upon arrival and we wheel off to the Harvey dining rooms.

Ar. Los Angeles 12:30 P.M. Santa Fe Wednesday

We go to the Clark Hotel—and put up in rooms with bath and are left to our own devices for the first afternoon and evening in the glittering southern metropolis of the Golden State.

No meals are included in Los Angeles because excellent dining is available everywhere. We have a full day here in which to revel in the scenic glory of this remarkable place, the goal of world travelers. Ample time for those who love to climb, to take the down trail into the depths of the great geological marvel; otherwise to view the changing lights and shadows from a hundred vantage points along the rim.

Lv. Grand Canyon 8:00 P.M. Santa Fe Tuesday

The train schedule makes our entry into Southern California impressive. We awaken as the train climbs up out of the desert, up and over the San Bernardino range, and coast down the Pacific slope into the green and gold fairyland comprising the far-flung suburban environs of Los Angeles—Pomona, Glendora, Monrovia and Pasadena.

Ar. Los Angeles 12:30 P.M. Santa Fe Wednesday

There is no set program for Friday—everybody left to his or her own devices for the day and evening.

Lv. Los Angeles 9:15 A.M. Santa Fe Saturday

A pleasant three-hour morning ride down along the coast brings us to San Diego. Lucky our rooms have been reserved at the top-notch San Diego Hotel for this flourishing city is sure to be overflowing with visitors to the California Pacific International Exposition, the World's Fair of 1935.



Beautiful Balboa Park in San Diego. Scene of an International Exposition this summer.



Southern California "street scene" Orange groves form the background for rows of date palms. A



The mystic colorful Grand Canyon.

TWO WEEKS \$139.63

# This Year's Most Outstanding California Vacation Bargain

All of the following Burlington and Santa Fe offices are booking agencies for these personally-conducted all-expense tours.

Any of the representatives listed will be happy to give you any further information that is desired—to assist you in every way.

## REPRESENTATIVES

- Boston, Mass.**  
80 Boylston St. . . . . F. E. Johnson, Gen. Agent. . . Burlington Route  
212 Old South Bldg. . . . . S. Carlson, Dist. Pass. Agent. . . Santa Fe Lines
- Buffalo, N. Y.**  
692 Ellicott Sq. . . . . C. P. Coleman, Gen. Agent. . . Santa Fe Lines
- Chicago, Ill.**  
179 W. Jackson St. . . . . Jas. R. Moriarty, D. P. A. . . . . Santa Fe Lines  
S. J. Owens, G. A. P. D. . . . . Burlington Route  
Emma W. Bock, Repr. . . . . Burlington Tours
- Cincinnati, Ohio**  
505 Dixie Term. Bldg. . . . . J. C. Boyer, General Agent. . . Burlington Route  
703 Dixie Terminal . . . . . F. G. Burnett, Gen. Agt. . . . . Santa Fe Lines
- Cleveland, Ohio**  
1105 Terminal Tower . . . . . P. Palmateer, Dist. Pass. Agt. . . Santa Fe Lines  
1033 Terminal Tower . . . . . S. S. Hankis, General Agent. . . Burlington Route
- Des Moines, Iowa**  
601 Equitable Bldg. . . . . D. M. Spangler, Gen. Agt. . . . . Santa Fe Lines  
505 Locust St. . . . . D. A. Coffeen, City Pass. Agt. . . Burlington Route
- Detroit, Mich.**  
704 Transportation Bldg. . . . . F. L. Gannaway, Gen. Agt. . . Burlington Route  
504 Transportation Bldg. . . . . R. C. Smith, Gen. Agt. . . . . Santa Fe Lines
- Indianapolis, Ind.**  
910 Merchants Bank Bldg. . . . . O. G. Hagemann, Gen. Agt. . . Burlington Route  
311 Merchants Bank Bldg. . . . . E. P. Fisher, Gen. Agt. . . . . Santa Fe Lines
- Kansas City, Mo.**  
719 Walnut St. . . . . R. E. Cuttall, D. P. A. . . . . Santa Fe Lines  
701 Walnut St. . . . . H. S. Jones, G. A. P. D. . . . . Burlington Route
- Milwaukee, Wis.**  
401 Majestic Bldg. . . . . J. A. Elmslie, Gen. Agt. . . . . Santa Fe Lines  
221 Wisconsin Ave. . . . . C. J. Leydon, Gen. Agt. . . . . Burlington Route
- Minneapolis, Minn.**  
211 Metropolitan Life Bldg. . . . . J. C. Batham, Gen'l Agt. . . . . Santa Fe Lines  
90 S. Seventh St. . . . . J. E. Lynn, G. A. P. D. . . . . Burlington Route
- New York City**  
500 Fifth Ave. (cor. 42nd). . . . . M. J. Fox, Dist. Pass. Agt. . . . . Burlington Route  
505 Fifth Ave. . . . . C. E. Eaton, G. A. P. D. . . . . Santa Fe Lines
- Omaha, Neb.**  
1004 Farnam St. . . . . J. W. Sharpe, G. A. P. D. . . . . Burlington Route
- Peoria, Ill.**  
211 Jefferson Bldg. . . . . O. H. Thomas, Gen. Agt. . . . . Santa Fe Lines  
301 S. Jefferson Ave. . . . . W. A. Stingley, Gen. Agt. . . . . Burlington Route
- Philadelphia, Pa.**  
302 Franklin Trust Bldg. . . . . G. C. Dillard, Dist. Pass. Agt. . . Santa Fe Lines  
1401 Fidelity-Phila. Tr. Bldg. . . . . E. H. Smith, Gen. Agt. . . . . Burlington Route
- Pittsburgh, Pa.**  
1222 Gulf Bldg. . . . . C. H. Beach, Dist. Pass. Agt. . . Santa Fe Lines  
1728 Koppers Bldg. . . . . A. G. Mathews, Gen. Agt. . . . . Burlington Route
- St. Joseph, Mo.**  
110 S. Fifth Ave. . . . . S. T. Abbott, Div. Pass. Agt. . . Burlington Route  
505 Francis St. . . . . C. H. Roels, Div. F. & P. A. Santa Fe Lines
- St. Louis, Mo.**  
416 Locust St. . . . . C. B. Ogle, G. A. P. D. . . . . Burlington Route  
296 Arcade Bldg. . . . . E. H. Dallas, Gen. Agt. . . . . Santa Fe Lines
- St. Paul, Minn.**  
6th and Robert Sts. . . . . S. L. Mentzer, G. A. P. D. . . . . Burlington Route

J. G. DELAPLAINE, Manager Burlington Escorted Tours  
547 W. Jackson Blvd. . . . . Chicago, Illinois

**WE SHOW YOU**  
*California*

L. E. LINDSAY  
SANTA FE R. R.  
1777 JACKSON STREET  
CHICAGO

L. E. LINU  
SANTA FE R. R.  
579 WEST JACKSON STREET  
CHICAGO  
TELEPHONE: HARRISON 4900

**Burlington Route**  
**Santa Fe**

## "Vacations Without A Care"

WOULDN'T you like to go to California this summer? To tour the Golden State by train and motor car; and cruise happily along the coast; seeing the most interesting sights; visiting the most outstanding places?

We venture to suggest you scarcely realize how easily such a fine adventure can be yours, and how inexpensively the trip can be made.

The key to the situation is found in the Santa Fe-Burlington plan of organized and directed group travel—a modern method that adds vacation hours to every day, and at the same time saves you money because of the lower costs that apply for group travel.

We have special Pullman cars for one thing. We have the benefit of "wholesale" rates at the hotels and get lower prices for automobile travel than the individual can get.

The details of the whole trip are worked out completely weeks before we start. Hotel rooms are engaged; motors await our arrival; meals are ready when we are. Nothing is left to chance. We know what we're going to do and see, how long it takes and exactly what it costs.

And not only do we know it, but so do you, right down to dates and train schedules and practically to the dollar when it comes to cost.

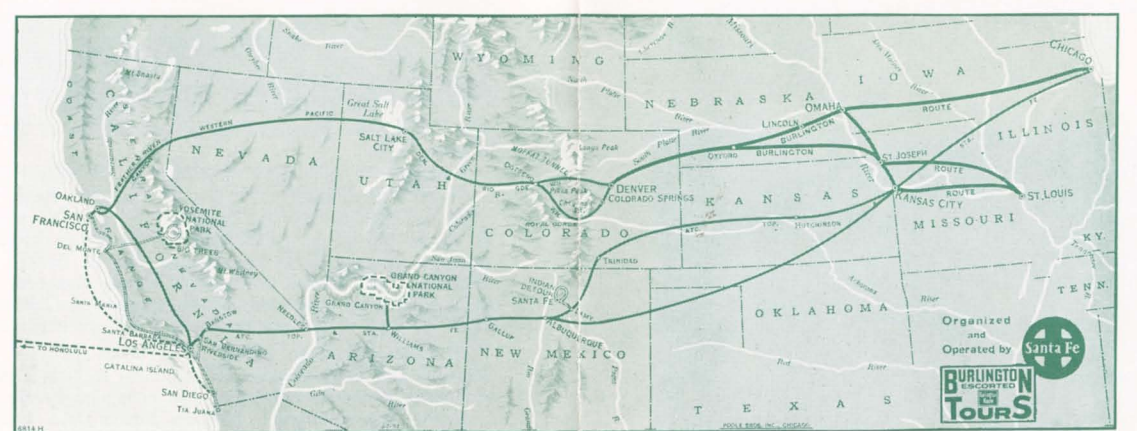
Our escorted tours, planned, organized and operated directly by these railroads represent a sound sensible travel method that is not an experiment in any sense. You will enjoy yourself—have a good time. You travel without any responsibilities; you see the most in the best way and with no waste of time; and all for a lower total cost than if you made the same trip independently.

All the perplexities of travel are avoided. You have no Pullman or hotel reservations to make, no time tables to consult, no bags to carry. The total cost of the tour is paid beforehand in a lump sum and there are no subsequent payments to be made and scarcely any further outlay while you're in our hands aside from your meals in Los Angeles and incidental expenses for personal purchases.

An experienced railroad man accompanies each party as escort, guide and tour manager to conduct all business transactions, leaving you with nothing to do but enjoy yourself in the company of a congenial group of fellow vacationers.

We're out for a good time, and you're invited.

Come on along.



Route map showing the course followed by these California tours.



## Colorado • California • Grand Canyon Tour O—14 Days

Tours Leave June 16, June 30, July 7, July 14, July 21, July 28, August 4, August 11

Perhaps you are one of the large group of people who, having but two brief weeks for vacation purposes, have considered a trip to California as out of the question. But here it is, as you see,—made possible by the special Pullmans and other special arrangements all the way which make it possible to employ every hour of your time to the best advantage.

Lv. Chicago 10:30 A.M. Burlington Sunday

Westbound aboard the Burlington's crack train. The Aristocrat.

Lv. St. Louis 2:15 P.M. Burlington Sunday

During our 3-hour stay in Denver we motor around the Parks and residential sections.

Lv. Denver 3:30 P.M. D. & R. G. W. Monday

Climbing up through the wonderful scenery of the Colorado Rockies over a new trans-continental route that takes us through the six-mile Moffat Tunnel, a mile under the top of James Peak; over the new and significant piece of railroad track, the famous "Dotsero Cut-off"; along the Colorado River, through Glenwood Springs and on to Salt Lake City.

Ar. Salt Lake City 7:30 A.M. D. & R. G. W. Tuesday

Lv. Salt Lake City 7:45 A.M. Western Pacific Tuesday

We skirt the shore of the Great Salt Lake this morning and enter upon the Great American Desert.

Ar. San Francisco 8:50 A.M. Western Pacific Wednesday

We go to the Hotel Sir Francis Drake, our headquarters. This morning a motor tour all around San Francisco, seeing the Civic Center, Golden Gate Park, the Presidio and other interesting sights in a very interesting city. Afternoon and evening open to your own choice of activities.

Lv. San Francisco 8:00 A.M. Southern Pacific Thursday

Ar. Merced 12:26 P.M. Southern Pacific Thursday

Motoring after lunch up into the mountains to Yosemite Valley where we spend a full day and put up in the charming bungalows of Camp Curry. The big show tonight is the "Fire Falls," a spectacular stunt that you will enjoy.

We have all day Friday in this beautiful playground, for motoring, hiking, sight-seeing . . . lots of interesting things to do; many astonishing sights to see. After dinner we motor down through the mountains to Merced and our train.

Lv. Merced 10:24 P.M. Southern Pacific Friday

Ar. Los Angeles 8:45 A.M. Southern Pacific Saturday

The "City of Angels" . . . and movie stars. We shall see some of the latter. For we motor through Hollywood, Beverly Hills, down to the ocean at Santa Monica on Saturday.

Because experience has taught us that people want to "do as I please" in Los Angeles, Saturday afternoon and all of Sunday are left entirely free and open for this purpose. The cost of the tour includes room with bath at the Hotel

Biltmore and includes too the motor sight-seeing tour on Saturday, but no meals or other plans. There is plenty of time for you to go over to Catalina Island, up Mt. Lowe, or Mt. Wilson, Pasadena, Riverside, the movie lots, night clubs, big cinema theatres—whatever you please and plenty to do indeed.

Monday morning we motor down along the seashore to San Diego which this year is the scene of the great California Pacific International Exposition. Headquarters here are the splendid U. S. Grant Hotel for two nights and a day.

Tuesday we motor to Agua Caliente in Mexico for lunch, returning in the afternoon via the Silver Strand and Coronado Beach.

Wednesday morning we motor back along the chain of beaches to Los Angeles.

Lv. Los Angeles 12:15 P.M. Santa Fe Wednesday

Eastward bound through the long chain of charming suburban towns and the orange groves—through the beautiful San Gabriel Valley as we climb up through Cajon Pass to the top of the San Bernardino range beyond which lies the Mojave Desert.

Ar. Grand Canyon 7:45 A.M. Santa Fe Thursday

All day for viewing the marvels of the Grand Canyon—one of the seven wonders of the modern world. Sensational scenery every moment; motoring along the rim of the colossal gorge to Hermit's Rest in the morning; afoot to various vantage points of your own choice in the afternoon. All meals here at the illustrious El Tovar.

Lv. Grand Canyon 8:00 P.M. Santa Fe Thursday

Homeward bound through New Mexico across a corner of Colorado, and the whole state of Kansas, where the wheat grows. During a half hour stop at Albuquerque you'll enjoy examining the wonderful exhibit of Indian things—fine turquoise, hammered silver, rugs, blankets, beadwork, etc.

Ar. Kansas City 5:00 P.M. Santa Fe Saturday

Ar. St. Louis 7:12 A.M. Burlington Sunday

Ar. Chicago 6:45 A.M. Santa Fe Sunday

### COST OF COMPLETE TOUR

Including all necessary expenses such as Standard Pullman, lodging (two persons to a room with bath), meals, and auto trips as shown in itinerary.	From Chicago		From St. Louis	
	Without Railroad Ticket	With Railroad Ticket	Without Railroad Ticket	With Railroad Ticket
Two persons in a lower berth (each) . . . . .	\$116.35	\$209.95	\$114.60	\$203.70
One person in a lower berth . . . . .	136.85	230.45	132.35	221.45
One person in an upper berth . . . . .	127.45	221.05	125.25	214.35

EXTRA CHARGE FOR SINGLE ROOM AT HOTELS \$4.50.

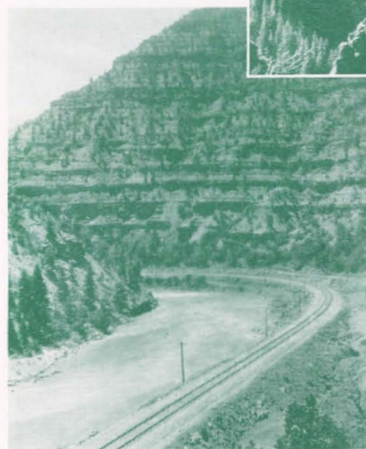
The costs shown above "without rail ticket" are for the benefit of passengers coming from the East or South with through rail tickets.



Entering California through Cajon Pass.

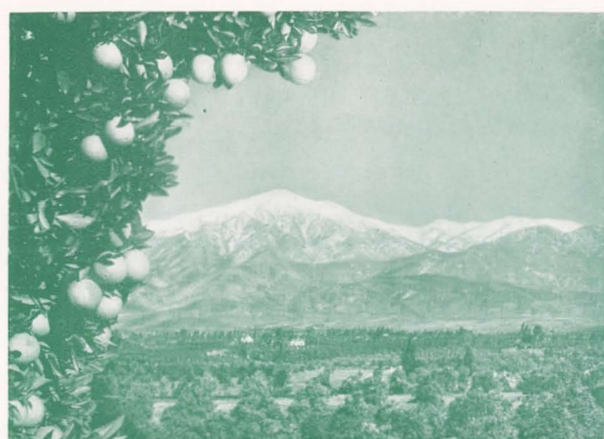


Steel ribbons penetrate Gore Canyon through the wild heart of the Colorado Rockies.

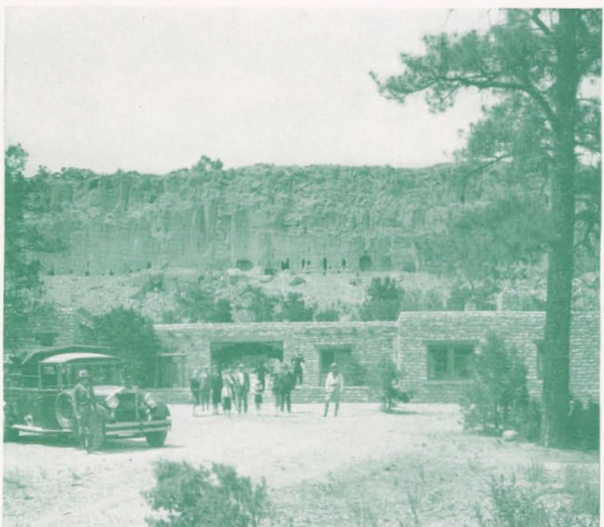


The strange "Pagodas" of Red Canyon on America's newest railroad link, the famous Dotsero Cut-off west of the Moffat Tunnel.

U. S. Grant Hotel, San Diego.



Southern California Vista.



Amazing evidence of an early American civilization. The prehistoric cliff dwellings of Puye, on the Indian-detour.



San Francisco's Civic Center.

## California Wonder Tour Tour P—20 Days

Tours Leave June 30, July 7, July 14, July 28, August 4

A rare travel value. A trip that includes features which are beyond the possibilities of individual travel. It combines the convenience and speed of rail transport with the flexibility of practically all-motor transportation in California.

Lv. Chicago 10:30 A.M. Burlington Sunday

On board the Burlington's crack flyer, the ARISTOCRAT.

Lv. St. Louis 2:15 P.M. Burlington Sunday

Ar. Denver 1:15 P.M. Burlington Monday

Between trains we see as much as possible of this mile-high city by motor.

Lv. Denver 3:30 P.M. D. & R. G. W. Monday

Lv. Salt Lake City 7:45 A.M. Western Pacific Tuesday

Everyone is interested in the tremendous salt beds through which we pass this morning as the train skirts the southern edge of Great Salt Lake. Interesting mountain vistas later in the afternoon, as we move across the great American Desert.

Ar. San Francisco 8:50 A.M. Western Pacific Wednesday

Headquarters are the Hotel Sir Francis Drake. This morning we see San Francisco by motor.

Lv. San Francisco 8:00 A.M. Southern Pacific Thursday

Ar. Merced 12:26 P.M. Southern Pacific Thursday

### YOSEMITE—Most strikingly beautiful valley in the world

Afternoon motoring through fruit orchards and Merced Canyon to Yosemite. We spend the night in bungalow cabins (with bath) at Camp Curry and Friday afternoon continue via Inspiration Point and through the famous Mariposa Grove of Big Trees, returning to Merced late in the afternoon, and stay overnight at the Tioga Hotel in air-conditioned rooms.

Lv. Merced 8:00 A.M. Motor Saturday

### Over the Coast Highway, Del Monte and Santa Barbara

For the next three days we enjoy a splendid succession of vacation delights while motoring down the long California coast line.

Saturday morning we climb up the east slope of the coast range; cross over through Pacheco Pass and drop down into the verdant Santa Clara Valley to Del Monte. In the afternoon we take the scenic 17-mile drive along Pebble Beach, through Carmel-by-the-Sea and round-about the Monterey peninsula, with the evening and overnight at the superb Del Monte Hotel.

Sunday the adventure continues as we wheel southward in balloon-tired luxury over the El Camino Real, the historic highway laid out by the Spanish padres. We stop for lunch at Santa Maria, an interesting town in an interesting community; afterwards down through Pismo Beach, the Arroyo Grande, Las Cruces, and so to Santa Barbara, one of the most delightful cities among the many in California. While here we stop at the Santa Barbara Biltmore Hotel.

Monday morning is left open—time to visit the ancient Mission and the alluring shops. And in the afternoon again motoring pleasantly through the chain of lovely coast towns—Montecito, Ventura, Malibu Beach and Santa Monica; entering Los Angeles over Wilshire Boulevard.

Ar. Los Angeles 4:30 P.M. Motor Monday

### Three Days in Los Angeles

The Los Angeles Biltmore is our headquarters until Friday morning.

The cost of this tour does not include meals while in Los Angeles, however, it includes lodging, auto trip as shown.

Tuesday we make an all-day trip including Pasadena, Universal Movie Studio, with opportunity for luncheon with the stars, Hollywood and Beverly Hills.

Wednesday and Thursday open for your pleasure.

Friday by train to Wilmington, then by boat to Avalon on Catalina Island, where we spend the afternoon and overnight at the St. Catherine Hotel. Trip in glass-bottomed boat to view submarine gardens this afternoon.

Returning to the mainland Saturday morning, we are met by motors and wheel away by motor, through Long Beach, the oil fields, La Jolla and into San Diego where we put up at the U. S. Grant Hotel.

Sunday includes an auto trip around San Diego and to Agua Caliente, however there is plenty of time for visits to the California Pacific International Exposition, San Diego's "World's Fair."

Lv. San Diego 8:30 A.M. Motor Monday

Northward along the coast; through La Jolla, Delmar and Santa Ana; by motor.

Lv. Los Angeles 12:30 P.M. Santa Fe Monday

Ar. Grand Canyon 7:45 A.M. Santa Fe Tuesday

All day viewing the marvels of the great gorge of the Colorado River. Sensational scenery every moment; motoring along the south rim to Hermit's Rest in the morning; afoot to various vantage points of your own choice in the afternoon. All meals here at the illustrious El Tovar.

Ar. Lamy 5:00 P.M. Santa Fe Wednesday

We motor up to Santa Fe for overnight at La Fonda—a hotel so distinctive that the pause here constitutes a real high spot of the tour. Thursday morning we visit the Santa Clara pueblo where the Indians turn out their famous black pottery. Subsequently we motor up to wonder at the prehistoric ruins of the cliff dwellers at Puye—something to think about. Returning we stop at the San Ildefonso pueblo on the way to Santa Fe and Lamy.

Ar. Kansas City 5:00 P.M. Santa Fe Friday

Ar. St. Louis 7:12 A.M. Burlington Saturday

Ar. Chicago 6:45 A.M. Santa Fe Saturday (Dearborn Station)

### COST OF COMPLETE TOUR

Including all necessary expenses such as Standard Pullman, lodging (two persons to a room with bath), meals, and auto trips, as shown in itinerary.	From Chicago		From St. Louis	
	Without Railroad Ticket	With Railroad Ticket	Without Railroad Ticket	With Railroad Ticket
Two persons in a lower berth (each) . . . . .	\$210.85	\$304.45	\$209.10	\$298.20
One person in a lower berth . . . . .	228.10	321.70	225.60	314.70
One person in an upper berth . . . . .	221.20	314.80	219.00	308.10

EXTRA CHARGE FOR SINGLE ROOM AT HOTELS \$10.00.

The costs shown above "without rail ticket" are for the benefit of passengers coming from the East or South with through rail tickets.



A world marvel, Grand Canyon of Arizona.



Pershing Square and the Biltmore—a splendid hotel in the center of the Los Angeles swirl.

A typical palm-lined boulevard of Los Angeles. Trim, stately and the very essence of Southern California's "atmosphere"



Del Monte Hotel.



Sightseeing in Yosemite National Park.



The Bay of Avalon—Catalina. An island Paradise where it is summertime all winter.



The outdoor casino cafe of Agua Caliente—a bright spot where glamour and gaiety reign.