



# 1985

This Burlington Northern wall calendar  
features winning selections  
from the company's  
Employee Photo Competition.



## Meet the Photographers . . .

This 1985 Burlington Northern wall calendar features photographs taken by BN employees or members of their immediate families. To obtain these photographs, a contest was held in 1984. More than 300 entrants submitted a total of 979 photographs. From that response, the judges selected a dozen for you to enjoy all through the year.

January

### Safety Meeting

Allan Roach, Locomotive Engineer  
Tinidad, Colorado

Allan appreciates photography because the results stem from his imagination in shooting. His deer picture was taken at Bundy Junction near Newburg, Missouri when he operated out of Springfield. Allan used a Canon AE-1 at f5.6 shutter speed with 400ASA Kodak film and 70-205mm Canon Macro zoom lens. He looks forward to new photographic opportunities in scenic Colorado.

Allan Roach



February

### Glacier Park Ski Trail

Marvin Cromwell, Steel gang fuel truck driver  
Missoula, Montana

While cross-country skiing late one morning in Glacier National Park, Marvin Cromwell was able to shoot the scene of majestic, snow-clad mountains. He used his Canon QL camera with a 55mm lens. Shutter speed was 1/250 at f11, with Kodak Ektachrome 64ASA color slide film. Marvin includes swimming, tennis and snowmobiling among his other recreational activities.

Marvin Cromwell



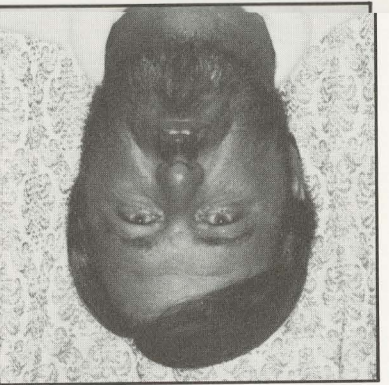
March

### High Plains Sunrise

Elston D. Baker, Machine Operator  
Amarillo, Texas

A man who knows what he's after, that's Elston Baker. Says he went to work early for several weeks just to photograph sunrises. He caught this view north of Claude, Texas, took it with his Minolta XG7 with a 205mm lens, using 100ASA Kodak film. He has been shooting pictures for 15 years, but this is his first contest entry. Elston lists riding motorcycles and dune buggies as his other hobbies.

Elston Baker



April

### Tulip Time

Larry B. Martin, Region Engineer Clerk  
Seattle, Washington

This was Larry's first visit to the tulip fields during Skagit Valley's "TulipTime" north of Seattle last April. He took his picture at Mt. Vernon, Washington with a Minolta 101 equipped with a 135mm Vivitar lens and used Kodachrome 25 film. Larry won BN's photo contest twice before, in '81 and '82. He was a runner-up in 1983. He hikes and snow skis when he can.

Larry Martin



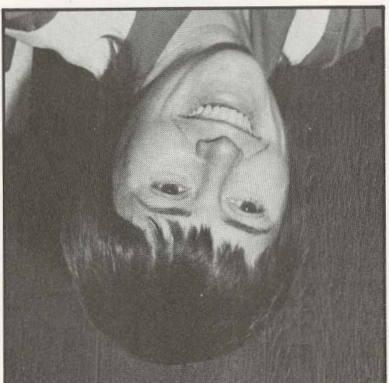
May

### High Country

Jean Wright, spouse of Eldon Wright, Agent/Clerk  
Worland, Wyoming

Jean is a repeat winner from the 1984 Burlington Northern wall calendar contest. Here she has captured Fremont Peak above Island Lake in west-central Wyoming near the Continental Divide. She used ASA 64 Kodak film in her Minolta SRT102 camera for her picture. Jean has added snow skiing to the golf, tennis, gardening and backpacking hobbies she listed last year.

Jean Wright



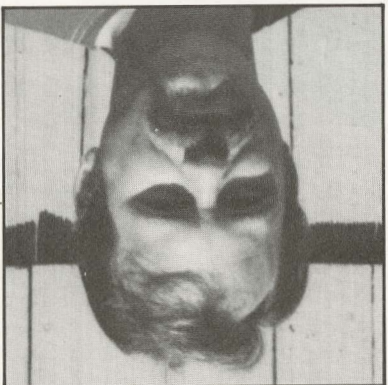
June

### Clark Fork River Junction

Mike Gelhaus, Locomotive Engineer  
Spokane, Washington

Another terrific train picture from Mike, his fourth Burlington Northern calendar winner. Morning fog hovered over the Clark Fork River Canyon as he shot this eastbound freight train passing midway between Trout Creek and Thompson Falls, Montana. He still uses Kodachrome 25 film to make slides with his Canon TX 35mm camera. As might be expected, Mike's hobbies are model railroading and collecting railroad antiques. Mike has entered every one of our calendar photo contests.

Mike Gelhaus

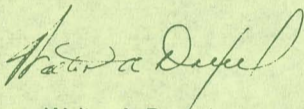




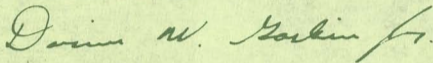
This Burlington Northern Railroad wall calendar comes to you with best wishes for a happy holiday season and a prosperous New Year.

Each photograph in this calendar is the work of a Burlington Northern employee or immediate family member. We are proud of the skill evident in these works selected from entries in our annual photography contest.

All of us at Burlington Northern Railroad are grateful for your interest. Please tell your friends about us.

A handwritten signature in dark ink, appearing to read "Walter A. Drexel". The signature is fluid and cursive, with a large loop at the end.

Walter A. Drexel  
Chairman of the Board,  
President and Chief  
Executive Officer

A handwritten signature in dark ink, appearing to read "Darius W. Gaskins, Jr.". The signature is cursive and somewhat stylized, with a long horizontal stroke at the end.

Darius W. Gaskins, Jr.  
Senior Vice President  
Marketing and Sales



This Burlington Northern Railroad wall calendar comes to you with best wishes for a happy holiday season and a prosperous New Year.

Each photograph in this calendar is the work of a Burlington Northern employee or immediate family member. We are proud of the skill evident in these works selected from entries in our annual photography contest.

All of us at Burlington Northern Railroad are grateful for your interest. Please tell your friends about us.



Walter A. Drexel, collecting railroad artifacts, was not Chairman of the Board in 1980. He will not be expected to resign. He still has 100,000 shares of stock. He is still a director of the company. He is still a director of the company. He is still a director of the company.

Darius V. Gaskins Jr.  
Senior Vice President  
Marketing and Sales





Allan Roach, a locomotive engineer, photographed these deer participating in what he calls their "Safety Meeting."



**BURLINGTON  
NORTHERN  
RAILROAD**

# JANUARY 1985



**BURLINGTON  
NORTHERN  
RAILROAD**

SUNDAY

MONDAY

TUESDAY

WEDNESDAY

THURSDAY

FRIDAY

SATURDAY

1

NEW YEAR'S DAY

2

3

4

5

6

7

8

9

10

11

12

13

14

15

16

17

18

19

20

21

22

23

24

25

26

27

28

29

30

31





Late morning sun in Glacier National Park in Montana provided Marvin Cromwell the opportunity for this striking mountain scene.



# FEBRUARY 1985



SUNDAY	MONDAY	TUESDAY	WEDNESDAY	THURSDAY	FRIDAY	SATURDAY
					1	2
3	4	5	6	7	8	9
10	11	12 <small>LINCOLN'S BIRTHDAY</small>	13	14 <small>VALENTINE'S DAY</small>	15	16
17	18 <small>WASHINGTON'S BIRTHDAY CELEBRATION</small>	19	20 <small>ASH WEDNESDAY</small>	21	22	23
24	25	26	27	28	29	30



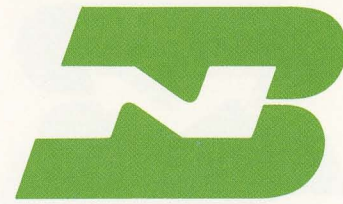


Elston Baker, a BN machine operator from Amarillo caught this rural sunrise north of Claude, Texas, on his way to work.



**BURLINGTON  
NORTHERN  
RAILROAD**

**MARCH 1985**



**BURLINGTON  
NORTHERN  
RAILROAD**

SUNDAY

MONDAY

TUESDAY

WEDNESDAY

THURSDAY

FRIDAY

SATURDAY

1

2

3

4

5

6

7

8

9

10

11

12

13

14

15

16

17

18

19

20

21

22

23

24/31

25

26

27

28

29

30





On Larry Martin's first visit to the Skagit Valley tulip fields north of Seattle he captured the colorful flowers at their prime.



**BURLINGTON  
NORTHERN  
RAILROAD**

**APRIL 1985**



**BURLINGTON  
NORTHERN  
RAILROAD**

SUNDAY

MONDAY

TUESDAY

WEDNESDAY

THURSDAY

FRIDAY

SATURDAY

1

2

3

4

5

6

GOOD FRIDAY

PASSOVER

7

EASTER

8

9

10

11

12

13

14

15

16

17

18

19

20

21

22

23

24

25

26

27

28

29

30





Fremont Peak looms over Island Lake in west-central Wyoming in this picture by Jean Wright, a repeat winner from BN's 1984 calendar.



**BURLINGTON  
NORTHERN  
RAILROAD**



**BURLINGTON  
NORTHERN  
RAILROAD**

**MAY 1985**

SUNDAY

MONDAY

TUESDAY

WEDNESDAY

THURSDAY

FRIDAY

SATURDAY

1

2

3

4

5

6

7

8

9

10

11

12

13

14

15

16

17

18

19

20

21

22

23

24

25

26

27

28

29

30

31

MOTHER'S DAY

VICTORIA DAY  
(CANADA)

MEMORIAL DAY  
OBSERVANCE





Mike Gelhaus consistently has provided us winning pictures of trains since our first photo contest. This one was taken at the Clark Fork River Canyon in Montana.



BURLINGTON  
NORTHERN  
RAILROAD



BURLINGTON  
NORTHERN  
RAILROAD

JUNE 1985

SUNDAY      MONDAY      TUESDAY      WEDNESDAY      THURSDAY      FRIDAY      SATURDAY

1

2      3      4      5      6      7      8

9      10      11      12      13      14      15

FLAG DAY

16      17      18      19      20      21      22

FATHER'S DAY

23/30      24      25      26      27      28      29





Spokane's Clock Tower, focal point of its 1974 Exposition, is highlighted by July Fourth fireworks in this evening photo by Don LaFavor, Spokane.



**BURLINGTON  
NORTHERN  
RAILROAD**

## JULY 1985



**BURLINGTON  
NORTHERN  
RAILROAD**

SUNDAY

MONDAY

TUESDAY

WEDNESDAY

THURSDAY

FRIDAY

SATURDAY

1

DOMINION DAY  
(CANADA)

2

3

4

INDEPENDENCE DAY

5

6

7

8

9

10

11

12

13

14

15

16

17

18

19

20

21

22

23

24

25

26

27

28

29

30

31





Jeri Lynn Huston, wife of Mark Huston, roadmaster at Fargo, N.D., captured this sunset from her parents' cabin near Brainerd, Minnesota.



# AUGUST 1985



SUNDAY

MONDAY

TUESDAY

WEDNESDAY

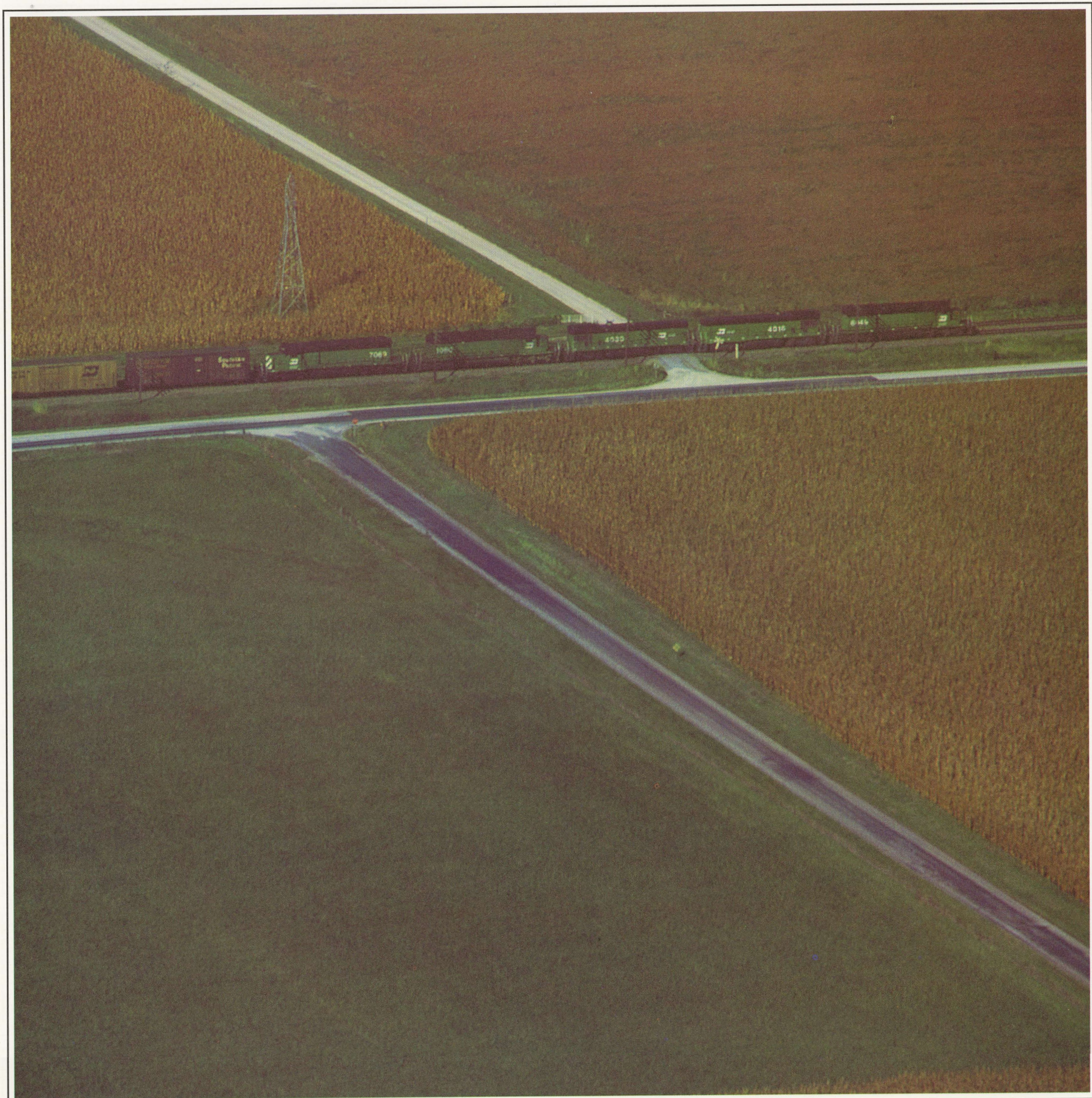
THURSDAY

FRIDAY

SATURDAY

4	2	3	4	1	2	3
4	5	6	7	8	9	10
11	12	13	14	15	16	17
18	19	20	21	22	23	24
25	26	27	28	29	30	31





Terry Lannholm photographed this aerial view of an east-bound freight train eight miles west of Galesburg, Illinois. Terry is a trainman from nearby Abingdon.



SEPTEMBER 1985



SUNDAY	MONDAY	TUESDAY	WEDNESDAY	THURSDAY	FRIDAY	SATURDAY
1	2 LABOR DAY	3	4	5	6	7
8	9	10	11	12	13	14
15	16 JEWISH NEW YEAR (ROSH HASHANAH)	17	18	19	20	21
22	23	24	25 YOM KIPPUR	26	27	28
29	30	31				





Patience paid off for Sandra Jackson, Data Entry Clerk at Springfield, Missouri. This idyllic scene was photographed between showers one gloomy October morning in southeastern Missouri.



**BURLINGTON  
NORTHERN  
RAILROAD**

# OCTOBER 1985



**BURLINGTON  
NORTHERN  
RAILROAD**

SUNDAY

MONDAY

TUESDAY

WEDNESDAY

THURSDAY

FRIDAY

SATURDAY

1

2

3

4

5

6

7

8

9

10

11

12

13

14

15

16

17

18

19

COLUMBUS DAY  
CELEBRATION  
(CANADIAN THANKSGIVING)

20

21

22

23

24

25

26

27

28

29

30

31





Wilson "Dub" Law, Switchman at Tulsa, Oklahoma, saw this scene of miles of mountains early one morning while on vacation in Tennessee.



**BURLINGTON  
NORTHERN  
RAILROAD**

# NOVEMBER 1985



**BURLINGTON  
NORTHERN  
RAILROAD**

SUNDAY

MONDAY

TUESDAY

WEDNESDAY

THURSDAY

FRIDAY

SATURDAY

2	1	3	4	5	1	2
3	4	5	6	7	8	9
10	11	12	13	14	15	16
17	18	19	20	21	22	23
24	25	26	27	28	29	30

ELECTION DAY

VETERANS DAY

THANKSGIVING





Making the most of an overcast day, Steig Sabee shot this nostalgic boat scene at Deer Lake near Grand Rapids, Minnesota.



**BURLINGTON  
NORTHERN  
RAILROAD**

**DECEMBER 1985**



**BURLINGTON  
NORTHERN  
RAILROAD**

SUNDAY

MONDAY

TUESDAY

WEDNESDAY

THURSDAY

FRIDAY

SATURDAY

1

2

3

4

5

6

7

8

HANUKKAH

9

10

11

12

13

14

15

16

17

18

19

20

21

22

23

24

25

CHRISTMAS

26

27

28

29

30

31



## Meet the Photographers . . .

---



Donald LaFavor

### July

#### Spokane's Riverfront Park

Donald J. LaFavor, Electronics Technician, Communications Dept.  
Spokane, Washington

Spokane's Clock Tower, an old railroad landmark that became a focal point of its 1974 Exposition, is highlighted by fireworks in this July 4, 1983 scene. Don used a Canon A-1 with a 35mm lens on a tripod without a filter for his picture. His camera was set at f4.0, and he manually exposed it for two seconds. A real activist, Don has a commercial and instructor's pilot rating, skis, has a ham radio, is a model railroader and goes motorcycle touring.



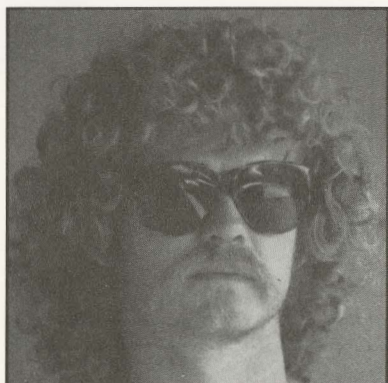
Jeri Huston

### August

#### Tranquil Sunset at Bay Lake

Jeri Lynn Huston, wife of Mark Huston, Roadmaster  
Fargo, North Dakota

Having watched sunsets for years from her parents' cabin on Bay Lake near Brainerd, Minnesota, Jeri captured this one to share it with us. In addition to photography, she enjoys reading, collecting decorated eggs, needlework, water skiing and most other sports. Jeri photographed this scene with a Canon AT-1 camera, using a Vivitar 70-210mm zoom lens and Kodak Ektachrome 200 film.



Terry Lannholm

### September

#### Brown Cornfields

Terry Lannholm, Trainman  
Abingdon, Illinois

An upset stomach while flying low at about 110 MPH almost prevented Terry from shooting this picture of a freight train enroute to Chicago. The scene is about eight miles west of Galesburg, Illinois. Terry mounted a 70-210mm lens on his Pentax SP500, using a f5.6 aperture for 1/125 seconds. He was a winner in 1979 with another railroad photo, lists music, motorcycles and boating as his other hobbies.



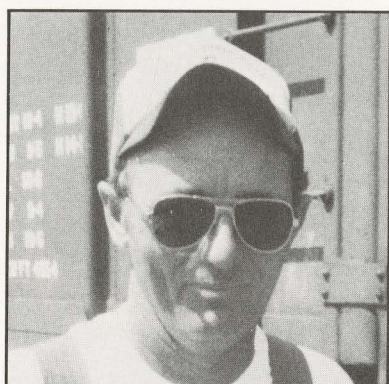
Sandra Jackson

### October

#### Alley Spring Mill

Sandra Jackson, Data Entry Clerk  
Springfield, Missouri

Sandra's idyllic scene was photographed between showers on an October morning in southeastern Missouri. She used an Olympus OM10 with a Sigma 28mm wide angle lens and Fuji 100 film to obtain her print. With traveling and flower arranging as her other hobbies, Sandy has been snapping pictures for about 15 years.



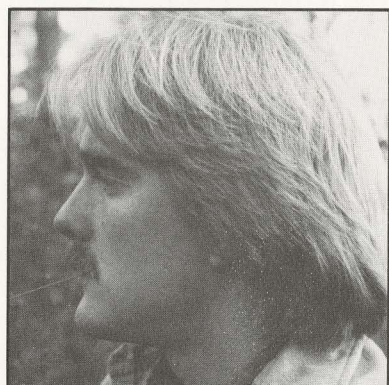
Wilson Law

### November

#### Smoky Mountain Magic

Wilson H. Law, Switchman  
Tulsa, Oklahoma

Early one morning while on vacation in Tennessee, Wilson "Dub" Law caught this scenic view of miles of mountains. He used his Nikon F2AS with a 50mm 1.4 lens and Ekatachrome 64 daylight film. "Dub" entered our 1982 calendar contest and has won two *Tulsa Tribune* color photo awards; he received a National Special Merit award in Kodak's KINSA black and white competition. "Dub" goes fishing and camping, collects antique fishing plugs and does wood carvings.



Steig Sabee

### December

#### Boats Docked at Mayflower Bay

Steig Sabee, Mgr., Systems Development, Marketing and Pricing Dept.  
Fort Worth, Texas

Mayflower Bay is at Deer Lake near Grand Rapids, Minnesota. Steig made the most of an overcast day by shooting his peaceful boating scene one afternoon with his Nikon FM equipped with a 43-86mm Nikkor zoom lens. Steig photographed the August scene in the 1984 BN calendar. He moved to Fort Worth in 1984 with the Marketing Department, enjoys fishing, canoeing and many other outdoor activities.





BURLINGTON NORTHERN RAILROAD							BURLINGTON NORTHERN RAILROAD						
MONDAY							SATURDAY						
1	2	3	4	5	6	7	8	9	10	11	12	13	14
15	16	17	18	19	20	21	22	23	24	25	26	27	28
29	30	31											