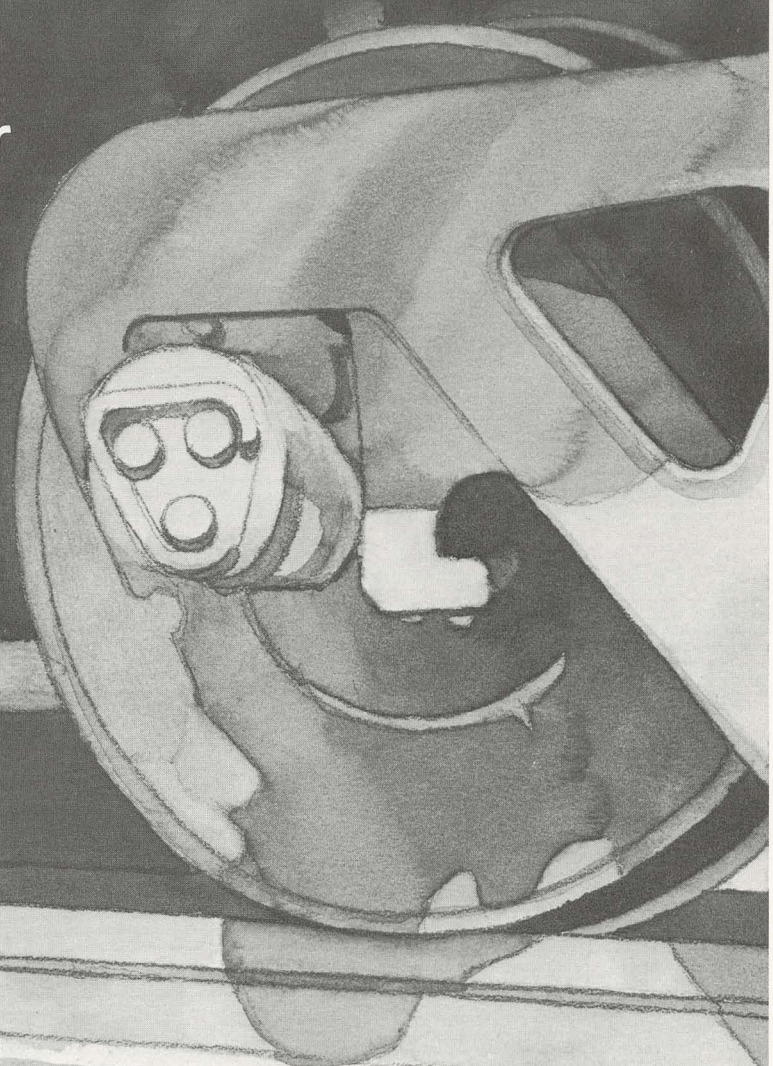




1982

This Burlington Northern wall calendar
features winning selections
from the company's
Employee Photo Competition.



Meet the Photographers . . .

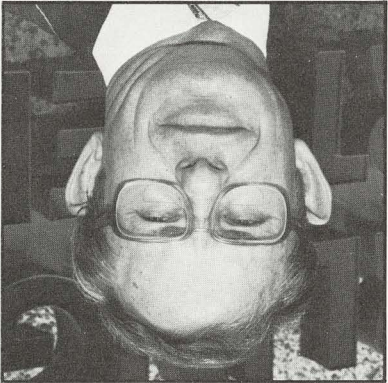
This 1982 Burlington Northern calendar features photographs taken by BN employees or members of their immediate families. To obtain these photographs, a contest was held in 1981. There were 305 entrants who submitted a total of 940 photographs. From that response, the judges selected a dozen for you to enjoy all through the year.

January

Reflection Lake

Grover L. Bower, BN Senior Manager, District Accounting Office
Springfield, Missouri

Reflection Lake is on Mt. Rainier in Washington. This is how Grover Bower made the photograph: "It was snowing and I was moving around the lake for just the right shot. I knocked snow off the trees and down my collar, but I knew I had what I wanted as soon as I looked through the view finder." He used a Certo Super Dollin II camera with a normal lens and Kodacolor II film.



Grover L. Bower

February

Dusk at Yaquina Head

Charlotte Hodgson Craig, wife of BN Railroad Yardmaster
Beaverton, Oregon

"Dusk at Yaquina Head" was photographed by Charlotte Hodgson Craig over the 1981 New Year holidays "during one of the most beautiful stretches of weather I have ever seen on the coast, winter or summer." She used a Canon AE-1 camera with a normal lens and Kodacolor II film. Charlotte has been making photographs for three years.



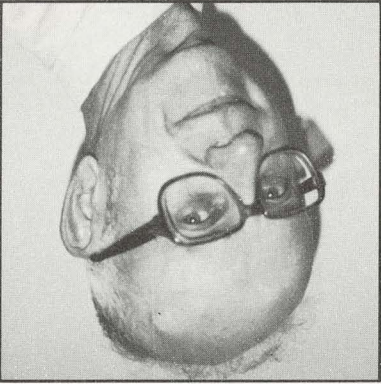
Charlotte Hodgson Craig

March

Safely Across

Joseph Kupferschmidt, BN Railroad Billing Clerk
St. Paul, Minnesota

While on vacation in California, Joe had just gotten off a ride on a narrow gauge railroad. He saw some ducks following him and he wheeled around to grab the photograph used this month. Joe used a Minolta XE-7 camera with a 50 mm lens. He used Kodacolor 100 film exposed for 1/25th of a second at f 5.6. Joe has been making photographs for almost 10 years.



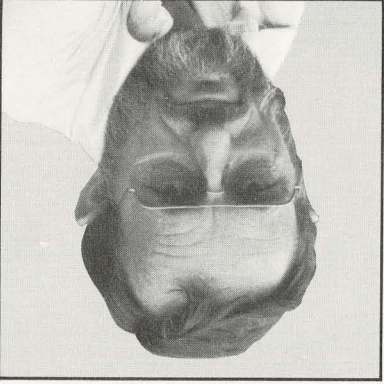
Joseph Kupferschmidt

April

Fog Landscape

Wilson H. Law, BN Railroad Switchman
Tulsa, Oklahoma

In northern California, the fog on ocean highways is constantly changing. About this photograph, Wilson Law says "It happened to be in the right place at the right time." He used a Konica camera with a normal lens and Kodacolor 64 film. Law's hobby is collecting old fishing plugs, as well as fishing and woodcarving.



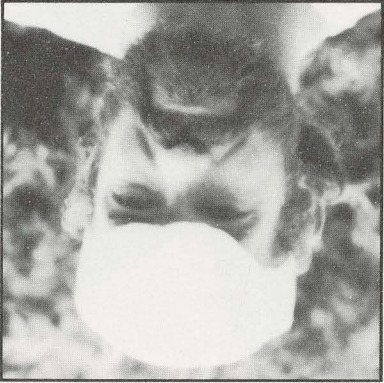
Wilson H. Law

May

Seattle Skyline

Bart Wilson, BN Railroad Sectionman
Seattle, Washington

From Gasworks Park, Bart Wilson photographed "Seattle Skyline" with his Canon AE-1 camera and a 90 mm lens and a polarizing filter. Bart wanted to run home for a larger format camera, but realized this interesting light wouldn't last. He used Ektachrome 400 film exposed at f 8 for 1/60th of a second.



Bart Wilson

June

High Mountain Lake

Wayne W. Stram, BN Railroad Surveyor Rodman
Gresham, Oregon

This marks Wayne Stram's third photograph to appear on a BN calendar. "High Mountain Lake" was taken in the Tatookosh Mountain range on the south side of Mt. Rainier National Park in Washington. Stram used a Roliflex camera with a 2 1/4 x 2 1/4 inch format and an 80 mm lens with Agfa Professional film. He has previously won in International competition of the Photographic Society of America.



Wayne W. Stram



"Reflection Lake" on Mt. Rainier in Washington was photographed by Grover L. Bower, BN District Accounting Office Senior Manager, in Springfield, Missouri.



JANUARY 1982



SUNDAY	MONDAY	TUESDAY	WEDNESDAY	THURSDAY	FRIDAY	SATURDAY
					1 <small>NEW YEAR'S DAY</small>	2
3	4	5	6	7	8	9
10	11	12	13	14	15	16
17	18	19	20	21	22	23
24 31	25	26	27	28	29	30

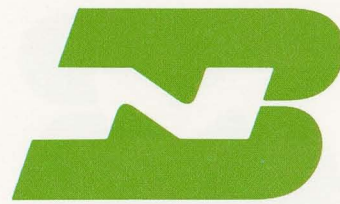


Charlotte Hodgson Craig photographed "Dusk at Yaquina Head" near Newport on the Oregon Coast. Her husband, Andrew, is BN Yardmaster from Beaverton.



**BURLINGTON
NORTHERN
RAILROAD**

FEBRUARY 1982



**BURLINGTON
NORTHERN
RAILROAD**

SUNDAY

MONDAY

TUESDAY

WEDNESDAY

THURSDAY

FRIDAY

SATURDAY

1

2

3

4

5

6

7

8

9

10

11

12

13

LINCOLN'S BIRTHDAY

14

VALENTINE'S DAY

15

WASHINGTON'S
BIRTHDAY
CELEBRATION

16

17

18

19

20

21

22

23

24

ASH WEDNESDAY

25

26

27

28

29

30

31

02

03

04



Joseph Kupferschmidt photographed ducks "Safely Across" the tracks of a narrow gauge railroad in California. Joe is a Billing Clerk in BN Railroad's St. Paul office.



MARCH 1982



SUNDAY	MONDAY	TUESDAY	WEDNESDAY	THURSDAY	FRIDAY	SATURDAY
	1	2	3	4	5	6
7	8	9	10	11	12	13
14	15	16	17	18	19	20
21	22	23	24	25	26	27
28	29	30	31			



"Fog Landscape" was photographed in northern California by Wilson Law.
Law is a BN Railroad Switchman in Tulsa, Oklahoma.



**BURLINGTON
NORTHERN
RAILROAD**



**BURLINGTON
NORTHERN
RAILROAD**

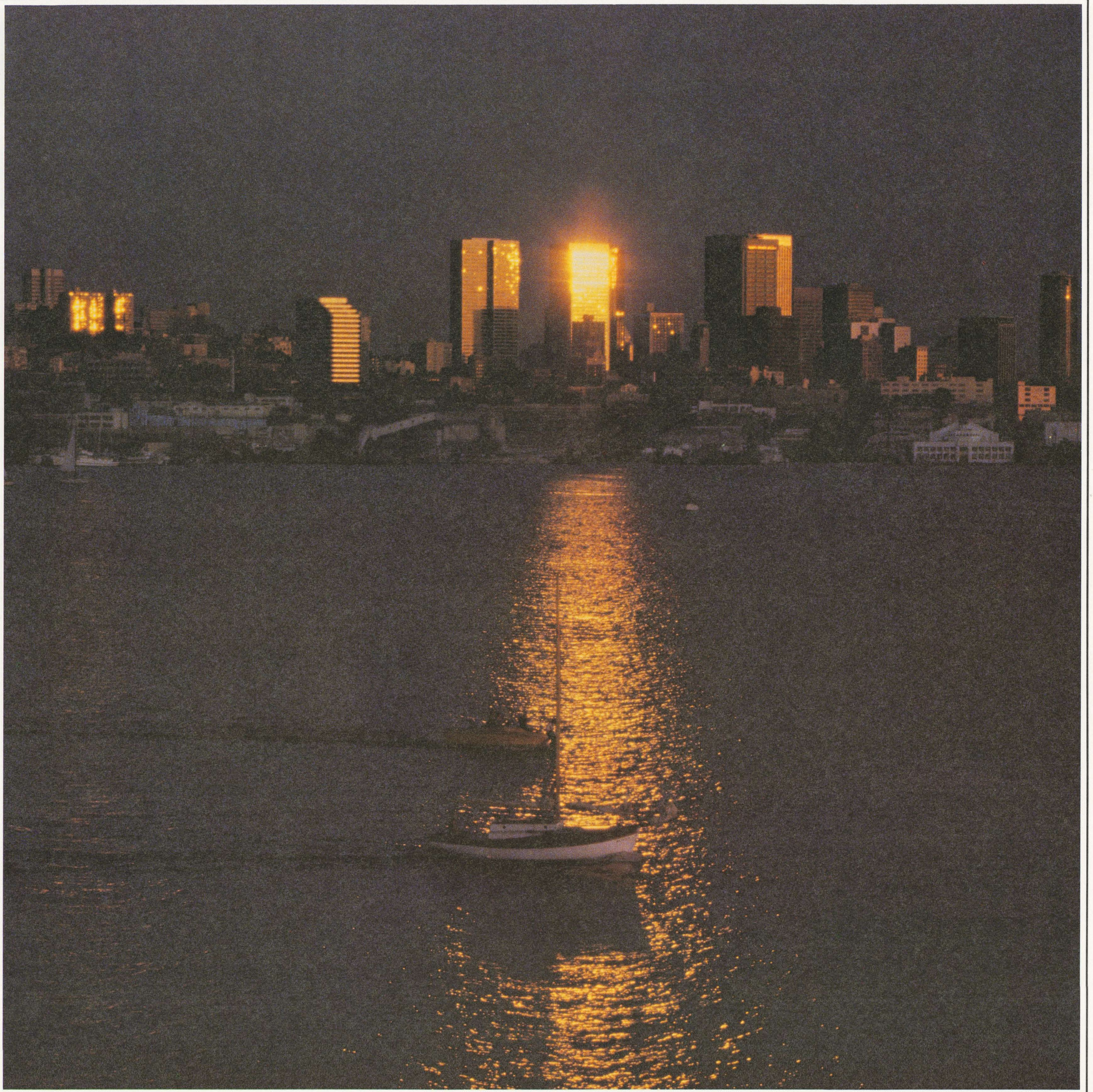
APRIL 1982

SUNDAY MONDAY TUESDAY WEDNESDAY THURSDAY FRIDAY SATURDAY

				1	2	3
4	5	6	7	8	9	10
11	12	13	14	15	16	17
18	19	20	21	22	23	24
25	26	27	28	29	30	

PASSOVER

EASTER



Interesting light reflections from "Seattle Skyline" are shimmering across Lake Union in this photograph by Bart Wilson, BN Railroad Sectionman from Seattle.



MAY 1982

SUNDAY	MONDAY	TUESDAY	WEDNESDAY	THURSDAY	FRIDAY	SATURDAY
						1
2	3	4	5	6	7	8
9 <small>MOTHER'S DAY</small>	10	11	12	13	14	15
16	17	18	19	20	21	22
23 30	<small>VICTORIA DAY (CANADA)</small> 24 31 <small>MEMORIAL DAY OBSERVATION</small>	25	26	27	28	29



"High Mountain Lake" was photographed in the Tatoosh Mountain Range in Washington
by BN Railroad Rodman Wayne W. Stram of Gresham, Oregon.



**BURLINGTON
NORTHERN
RAILROAD**



**BURLINGTON
NORTHERN
RAILROAD**

JUNE 1982

SUNDAY	MONDAY	TUESDAY	WEDNESDAY	THURSDAY	FRIDAY	SATURDAY
		1	2	3	4	5
6	7	8	9	10	11	12
13	14 <small>FLAG DAY</small>	15	16	17	18	19
20 <small>FATHER'S DAY</small>	21	22	23	24	25	26
27	28	29	30			



"Sunset at Moorcroft" was photographed in Wyoming by Alan Eikelberger, BN Railroad Conductor from Edgemont, South Dakota. Alan's photos have appeared on BN calendars twice before.



**BURLINGTON
NORTHERN
RAILROAD**

JULY 1982



**BURLINGTON
NORTHERN
RAILROAD**

SUNDAY

MONDAY

TUESDAY

WEDNESDAY

THURSDAY

FRIDAY

SATURDAY

1

DOMINION DAY
(CANADA)

2

3

4

INDEPENDENCE DAY

5

6

7

8

9

10

11

12

13

14

15

16

17

18

19

20

21

22

23

24

25

26

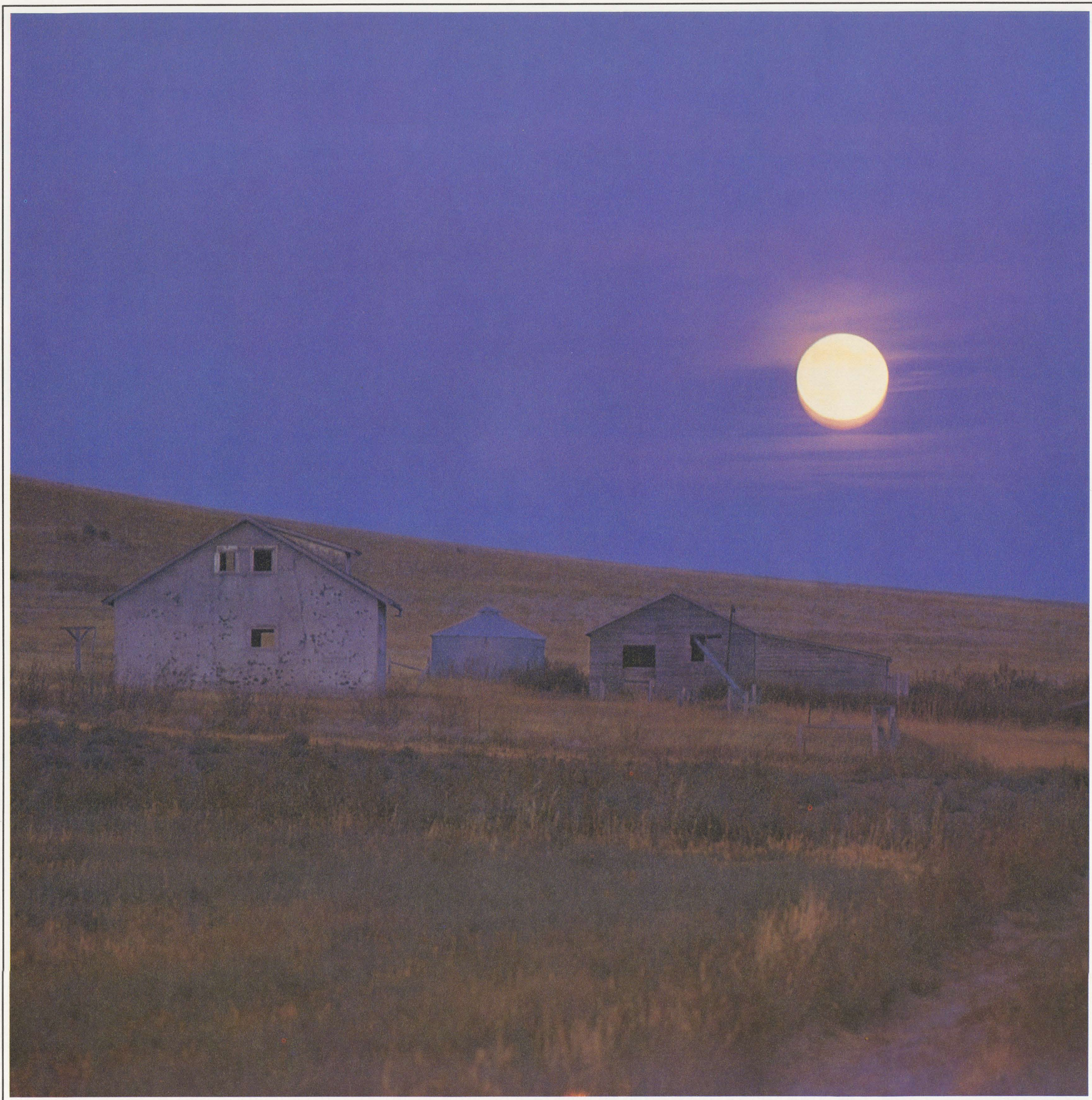
27

28

29

30

31



"Prairie Moonlight" was photographed near Buffalo in South Dakota by R. W. Stephenson,
BN Railroad Mechanical Foreman at Gillette, Wyoming



**BURLINGTON
NORTHERN
RAILROAD**

AUGUST 1982



**BURLINGTON
NORTHERN
RAILROAD**

SUNDAY

MONDAY

TUESDAY

WEDNESDAY

THURSDAY

FRIDAY

SATURDAY

1

2

3

4

5

6

7

8

9

10

11

12

13

14

15

16

17

18

19

20

21

22

23

24

25

26

27

28

29

30

31



"Down By the Ol' Mill Stream" was photographed in southern Missouri by James Green, BN Electrician in Springfield. The mill is still in good working order.



**BURLINGTON
NORTHERN
RAILROAD**

SEPTEMBER 1982



**BURLINGTON
NORTHERN
RAILROAD**

SUNDAY

MONDAY

TUESDAY

WEDNESDAY

THURSDAY

FRIDAY

SATURDAY

1

2

3

4

5

6

LABOR DAY

7

8

9

10

11

12

13

14

15

16

17

18

JEWISH NEW YEAR
(ROSH HASHANAH)

19

20

21

22

23

24

25

26

27

YOM KIPPUR

28

29

30



Though it took more than an hour to get right, Larry Martin made "Scents of Time" at Teanaway on Blewett Pass. Larry is a BN Track Department Clerk in Seattle.



**BURLINGTON
NORTHERN
RAILROAD**

OCTOBER 1982



**BURLINGTON
NORTHERN
RAILROAD**

SUNDAY

MONDAY

TUESDAY

WEDNESDAY

THURSDAY

FRIDAY

SATURDAY

1 2

3 4 5 6 7 8 9

10 11 12 13 14 15 16

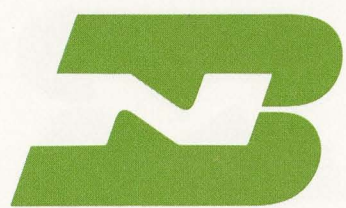
COLUMBUS DAY
CELEBRATION
(CANADIAN THANKSGIVING)

17 18 19 20 21 22 23

24/31 25 26 27 28 29 30



"The Dunes" in Oregon was photographed by Kenneth Meyers, BN Supervisory Agent at Livingston, Montana. Meyers was impressed by the late evening light on the sand.



**BURLINGTON
NORTHERN
RAILROAD**

NOVEMBER 1982



**BURLINGTON
NORTHERN
RAILROAD**

SUNDAY

MONDAY

TUESDAY

WEDNESDAY

THURSDAY

FRIDAY

SATURDAY

1

2

3

4

5

6

7

8

9

10

11

12

13

VETERANS' DAY

14

15

16

17

18

19

20

21

22

23

24

25

26

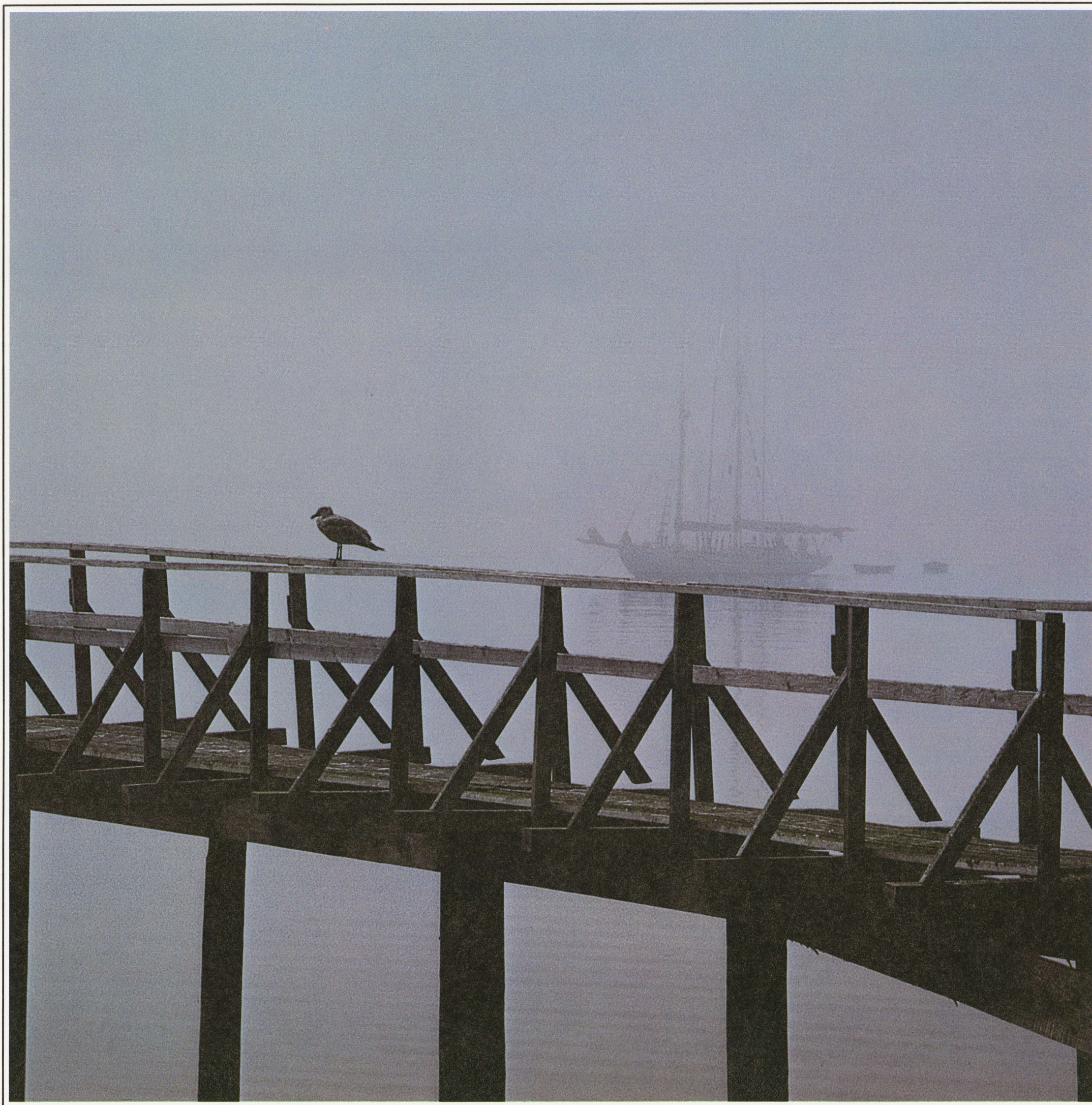
27

THANKSGIVING

28

29

30



Don North photographed "Misty Morn" at Port Townsend on Washington's Olympic Peninsula.
Don is Executive Director of the BN Foundation in Seattle.



**BURLINGTON
NORTHERN
RAILROAD**

DECEMBER 1982



**BURLINGTON
NORTHERN
RAILROAD**

SUNDAY

MONDAY

TUESDAY

WEDNESDAY

THURSDAY

FRIDAY

SATURDAY

1

2

3

4

5

6

7

8

9

10

11

HANUKKAH

12

13

14

15

16

17

18

19

20

21

22

23

24

25

CHRISTMAS

26

27

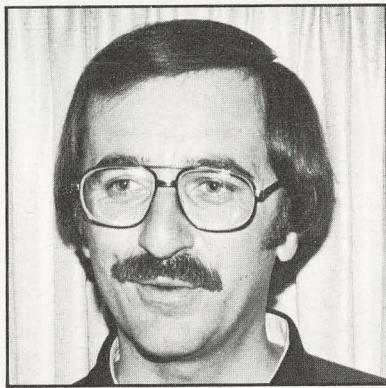
28

29

30

31

Meet the Photographers . . .



Alan Eikelberger

July

Sunset at Moorcroft

Alan Eikelberger, BN Railroad Conductor
Edgemont, South Dakota

Moorcroft, Wyoming is the scene of this sunset photographed by Alan Eikelberger. This is Alan's third picture on a BN calendar. He has also been published in "Colorado's Loneliest Railroad" book by P. R. Griswold and in the Denver Post accompanying a poem he wrote. Alan used a Minolta SRT 100 camera and Kodachrome 64 film.



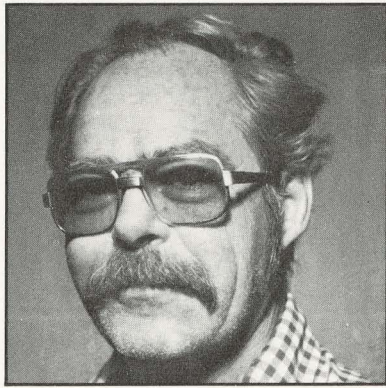
Robert W. Stephenson

August

Prairie Moonlight

Robert W. Stephenson, BN Railroad Mechanical Foreman
Gillette, Wyoming

Robert Stephenson photographed "Prairie Moonlight" as dusk settled over South Dakota near Buffalo. He used a Pentax camera with a 200 mm lens and Kodachrome II film. Stephenson has been making photographs for 13 years and also enjoys woodworking.



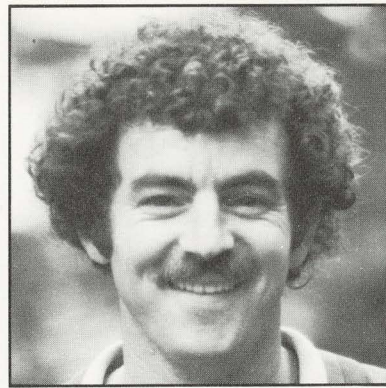
James Green

September

Down By the Ol' Mill Stream

James Green, BN Railroad Electrician
Springfield, Missouri

The mill pictured in "Down By the Ol' Mill Stream" is still in good working order, according to the photographer, James Green, BN Electrician in Springfield, Missouri. James took the picture in southern Missouri with a Crown Graphic camera with a 65 mm lens. Film used was Ektachrome 64 exposed for 1/2 second at f 32.



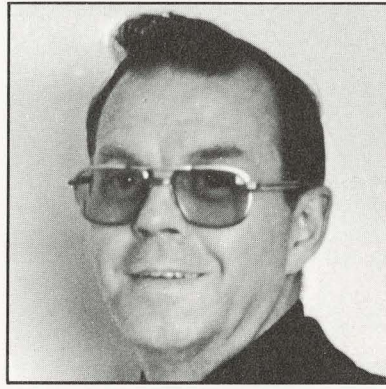
Larry B. Martin

October

Scents of Time

Larry B. Martin, BN Railroad Track Department Clerk
Seattle, Washington

Larry Martin's photograph, "Scents of Time," was photographed around noon on the Teanaway on Blewett Pass. He used a Minolta 101 camera with a 135 mm lens. Larry would like to thank the friend who accompanied him, as the photograph took more than an hour to get right. Martin had another photo on last year's calendar.



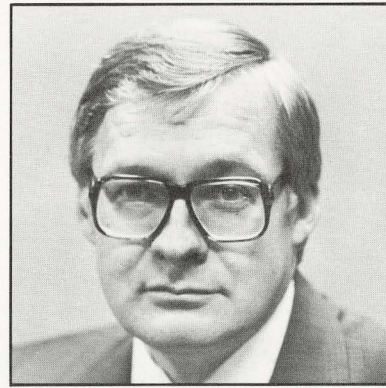
Kenneth L. Meyers

November

The Dunes

Kenneth L. Meyers, BN Railroad Supervisory Agent
Livingston, Montana

The late evening light on the sand dunes in Oregon made such a contrast with the grass in the foreground that Kenneth Meyers felt this scene worthy of a photograph. We agreed. This is Ken's third BN calendar contest winner. His photos have appeared in Montana Magazine, Inland Empire Magazine and as TV station identification backgrounds. He used a Minolta SRT 102 camera and Kodachrome 64 film exposed for 250th of a second at f 11.



Donald K. North

December

Misty Morn

Donald K. North, Executive Director, Burlington Northern Foundation
Issaquah, Washington

On a trip on the Olympic Peninsula at Port Townsend in Washington, Don captured "Misty Morn" with his Pentax ME camera and normal lens. This is the first photo Don has entered in any contest. He used Ektachrome 200 film and shot at f 5.6 for 125th of a second. Don's son David had a photo on the 1979 BN calendar.



BURLINGTON NORTHERN RAILROAD