

1980

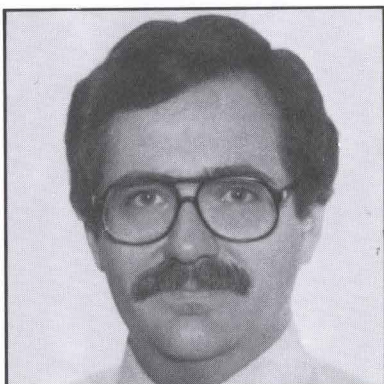
*This 1980 Burlington Northern
wall calendar features winning
selections from the company's second
Employee Calendar Photo Competition*



BURLINGTON
NORTHERN

Meet the Photographers . . .

This 1980 Burlington Northern calendar features photographs taken by BN employees or members of their immediate families. During 1979, a contest produced up to four photographs from each of 253 entrants. From that response, the judges selected a dozen for you to enjoy all through the year.



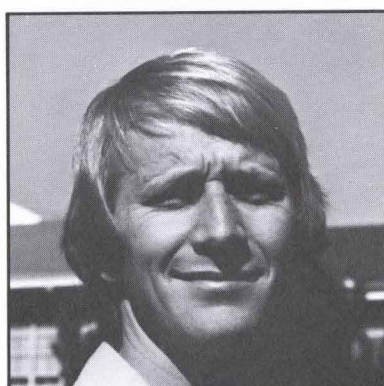
Fred Manthey

JANUARY

Icing on the Lake

Fred Manthey, BN Senior Computer Analyst
Lake Elmo, Minnesota

Fred took this photograph in the middle of the afternoon on a winter day in Minnesota. The scene is of Shovel Point, a spot north of Silver Bay on Lake Superior. He used a Hasselblad 500 C/M camera with an 80mm f2.8 lens. Film used was Kodak Vericolor II. The photograph was made at 1/125th of a second at f11. Fred has been making photographs for some 11 years and also enjoys trapshooting.



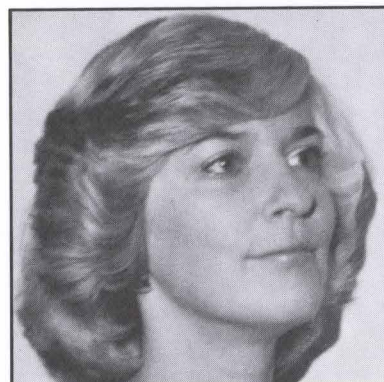
James Romo

FEBRUARY

Spokane Bound

James T. Romo
Missoula, Montana

Jim Romo sent in two 35mm transparencies for consideration in the contest and both photographs were in the final batch of pictures before the judges selected "Spokane Bound," which depicts the Burlington Northern yard in Missoula. Jim is the son of Clarence Romo, BN's agent-telegrapher at Bainville, Montana.



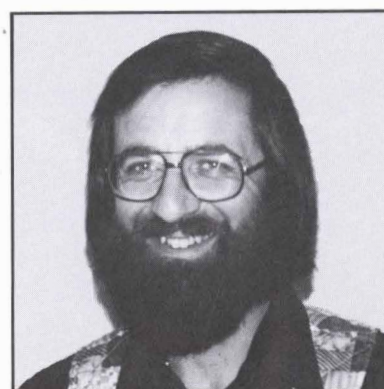
Dal Hillyer

MARCH

Evening's Grace

Dal Hillyer
Livingston, Montana

The powerful play of light on the clouds and the water inspired Dal Hillyer to make this photograph in the early evening at the beach home of her parents at Tierra Del Mar on the Oregon coast. She used a Pentax K 1000 camera and Kodacolor 400 film. Aperture of f2.8 and shutter speed of 1/125th of a second. Dal is the wife of Ben Hillyer, car shop foreman in BN's Livingston shops.



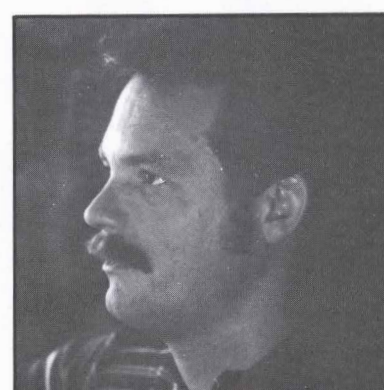
Alan Eikelberger

APRIL

A Little Farther Up the Line

Alan Eikelberger, BN conductor
Edgemont, South Dakota

A repeat winner from last year, Alan Eikelberger describes the location of this year's photograph as "Mile post 87.78 of the 4th subdivision of the Alliance Division's Edgemont — Deadwood branch line." Alan used his Minolta SRT 100 camera and Kodachrome 64 film.



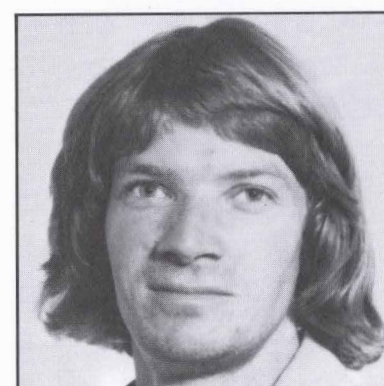
Mike Gelhaus

MAY

Yakima Passage

Mike Gelhaus, BN locomotive fireman
Spokane, Washington

Mike Gelhaus, the other repeat winner from last year, feels this photograph captures Burlington Northern in the beautiful Pacific Northwest. The eastbound train is coiling along the Yakima River between Cle Elum and Ellensburg in central Washington. Photo was taken on Kodachrome 25 with a Canon TX camera.



Robert Lovendusky

JUNE

Sand, Sea and Surf

Robert E. Lovendusky
Concord, California

Robert Lovendusky used his Fujica camera and Kodachrome 25 film to photograph this scene on the coast of Oregon. He is the son of Robert Lovendusky, BN Area Sales Representative in San Francisco. Son Robert has been making photographs for about four years and also enjoys skiing, hiking, backpacking and fishing.



"Icing on the Lake" was photographed north of Silver Bay, Minnesota on Lake Superior by Fred Manthey of St. Paul, BN Senior Computer Analyst.



JANUARY 1980



SUNDAY	MONDAY	TUESDAY	WEDNESDAY	THURSDAY	FRIDAY	SATURDAY
		1	2	3	4	5
6	7	8	9	10	11	12
13	14	15	16	17	18	19
20	21	22	23	24	25	26
27	28	29	30	31		



James Romo, son of Clarence Romo, BN's agent-telegrapher at Bainville, Montana, photographed the Missoula Yard and titled it "Spokane Bound."



**BURLINGTON
NORTHERN**

FEBRUARY 1980



**BURLINGTON
NORTHERN**

SUNDAY

MONDAY

TUESDAY

WEDNESDAY

THURSDAY

FRIDAY

SATURDAY

1 2

3 4 5 6 7 8 9

10 11 12 13 14 15 16

17 18 19 20 21 22 23

24 25 26 27 28 29



"Evening's Grace" was photographed at her parents' beach home in Oregon by Dal Hillyer, wife of Ben Hillyer, car shop foreman in BN's Livingston, Montana shops.



MARCH 1980



SUNDAY

MONDAY

TUESDAY

WEDNESDAY

THURSDAY

FRIDAY

SATURDAY

1

2

3

4

5

6

7

8

9

10

11

12

13

14

15

16

17

18

19

20

21

22

23/30

24/31

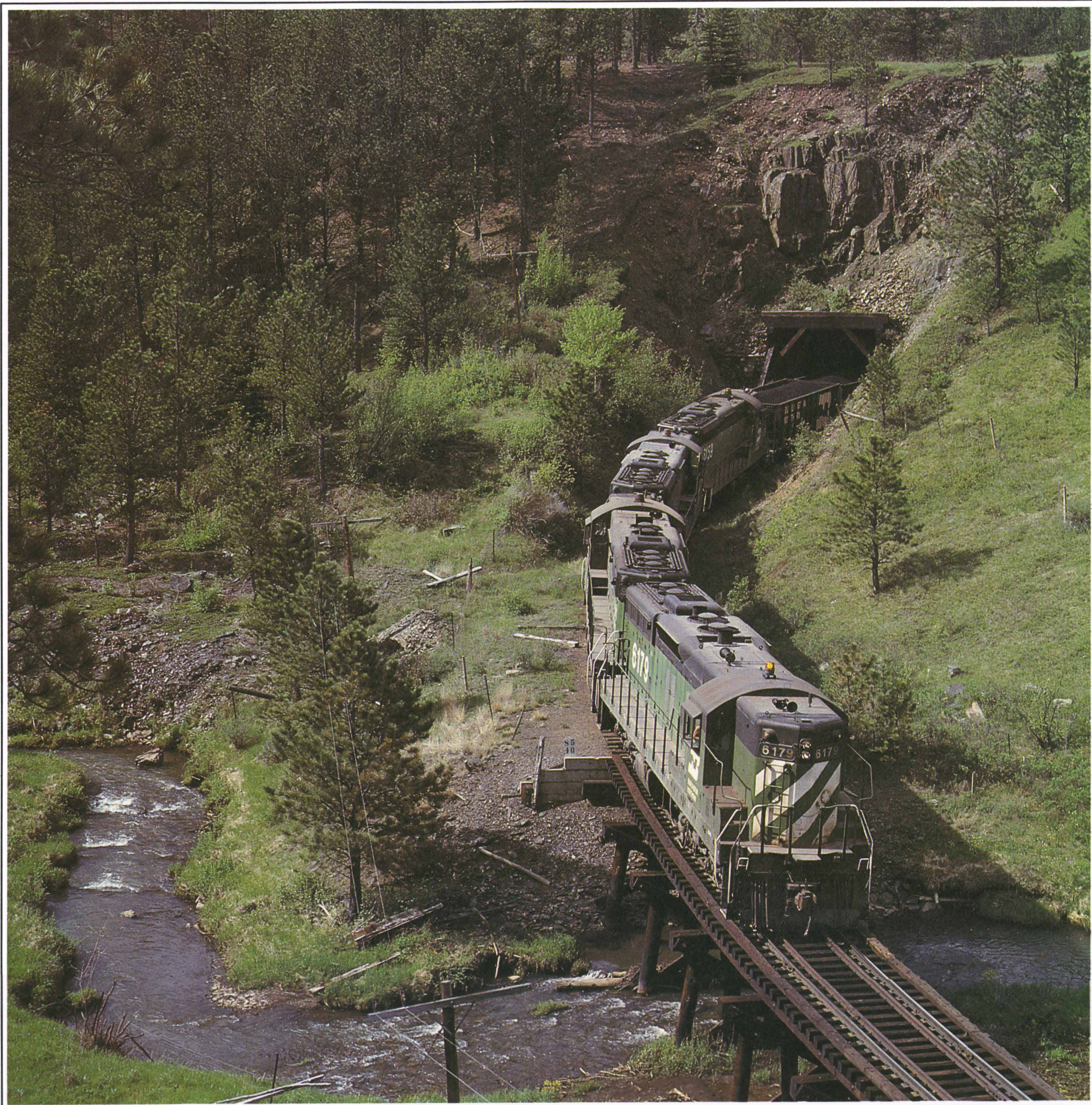
25

26

27

28

29



"A Little Farther Up the Line" was photographed near Edgemont, S.D. by Alan Eikelberger, BN conductor.



**BURLINGTON
NORTHERN**

APRIL 1980



**BURLINGTON
NORTHERN**

SUNDAY

MONDAY

TUESDAY

WEDNESDAY

THURSDAY

FRIDAY

SATURDAY

1

2

3

4

5

6

7

8

9

10

11

12

13

14

15

16

17

18

19

20

21

22

23

24

25

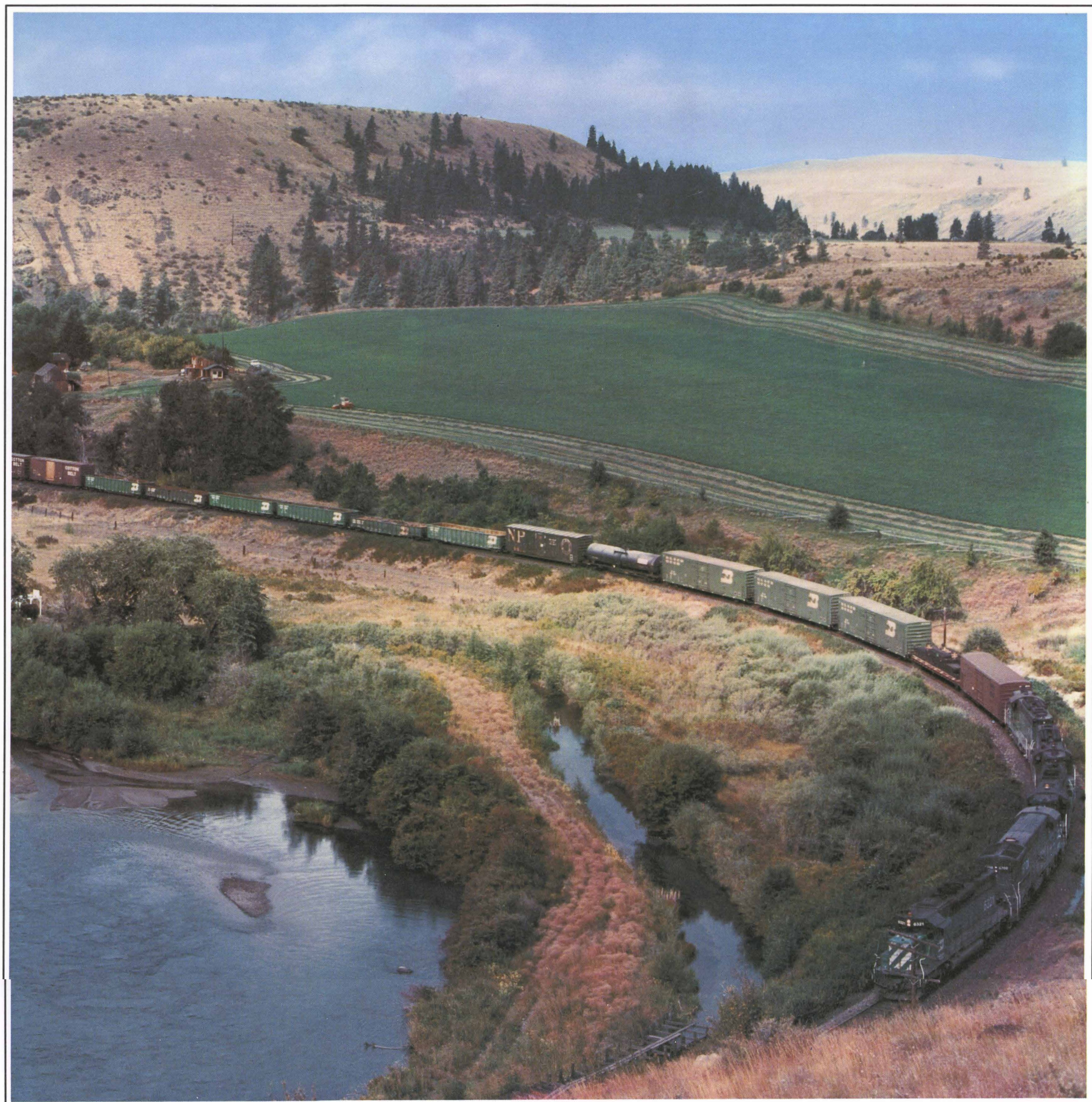
26

27

28

29

30



Mike Gelhous of Spokane, BN locomotive fireman, photographed "Yakima Passage," an eastbound freight train along the Yakima River between Cle Elum and Ellensburg in Washington.



MAY 1980



SUNDAY

MONDAY

TUESDAY

WEDNESDAY

THURSDAY

FRIDAY

SATURDAY

1 2 3

4 5 6 7 8 9 10

11 12 13 14 15 16 17

18 19 20 21 22 23 24

25 26 27 28 29 30 31



"Sand, Sea and Surf" was photographed on the Oregon coast by Robert Lovendusky whose father (same name) is BN Area Sales Representative in San Francisco.



JUNE 1980



SUNDAY

MONDAY

TUESDAY

WEDNESDAY

THURSDAY

FRIDAY

SATURDAY

1

2

3

4

5

6

7

8

9

10

11

12

13

14

15

16

17

18

19

20

21

22

23

24

25

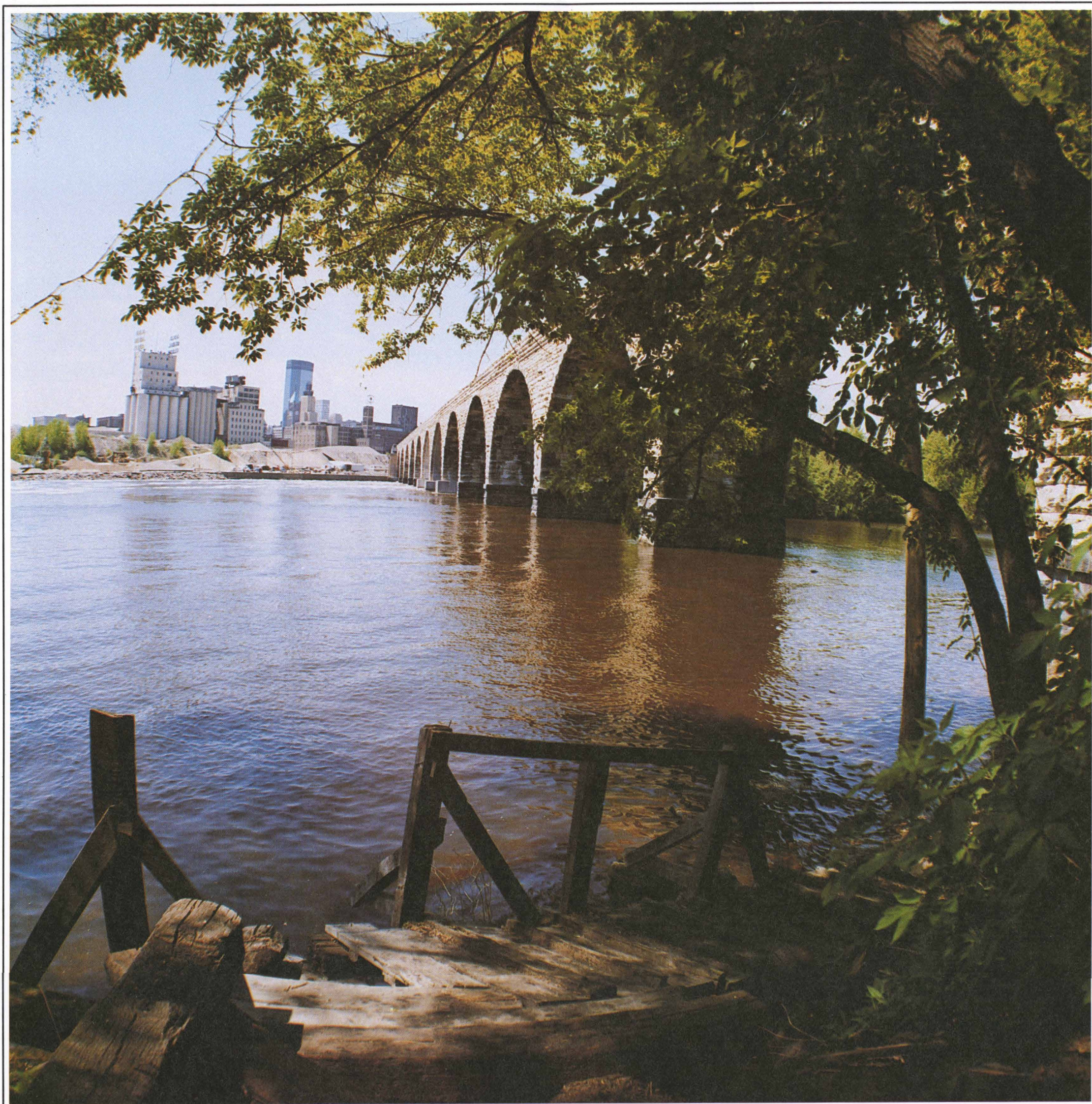
26

27

28

29

30



Daniel Merchant of St. Paul, BN brakeman/switchman, photographed "Bridge Over History", the historic Stone Arch Bridge spanning the Mississippi River between Minneapolis and St. Paul.



JULY 1980



SUNDAY

MONDAY

TUESDAY

WEDNESDAY

THURSDAY

FRIDAY

SATURDAY

1 2 3 4 5

6 7 8 9 10 11 12

13 14 15 16 17 18 19

20 21 22 23 24 25 26

27 28 29 30 31



"Summer on the Plains" was photographed by Jane H. Kriete, wife of Russell Kriete, a draftsman in BN's Chicago office. The Krietes live in Downers Grove, Illinois.



AUGUST 1980



SUNDAY

MONDAY

TUESDAY

WEDNESDAY

THURSDAY

FRIDAY

SATURDAY

1 2

3 4 5 6 7 8 9

10 11 12 13 14 15 16

17 18 19 20 21 22 23

~~24~~ 25 26 27 28 29 30
31



James Greear, BN telegrapher in Minneapolis-St. Paul, photographed "Sylvan Path" in a bird sanctuary near Lake Harriet in Minneapolis.



SEPTEMBER 1980



SUNDAY

MONDAY

TUESDAY

WEDNESDAY

THURSDAY

FRIDAY

SATURDAY

1

2

3

4

5

6

7

8

9

10

11

12

13

14

15

16

17

18

19

20

21

22

23

24

25

26

27

28

29

30



"Sentinal for All Seasons" captured Split Rock Lighthouse on Lake Superior on a beautiful autumn day.
Photographed by James Groe of St. Paul, BN central payments department control clerk.



OCTOBER 1980



SUNDAY

MONDAY

TUESDAY

WEDNESDAY

THURSDAY

FRIDAY

SATURDAY

1

2

3

4

5

6

7

8

9

10

11

12

13

14

15

16

17

18

19

20

21

22

23

24

25

26

27

28

29

30

31



Wayne Stram of Gresham, Oregon, BN surveyor/rodman, photographed
"The Breaking Surf" at Cape Kiwanda on the Oregon Coast.



NOVEMBER 1980



SUNDAY

MONDAY

TUESDAY

WEDNESDAY

THURSDAY

FRIDAY

SATURDAY

1

2

3

4

5

6

7

8

9

10

11

12

13

14

15

16

17

18

19

20

21

22

23/30

24

25

26

27

28

29



"Superior Sunrise" was photographed near Grand Marais on Lake Superior in Minnesota by David North, son of BN's Donald North, Director of Administration, Executive Department, St. Paul.

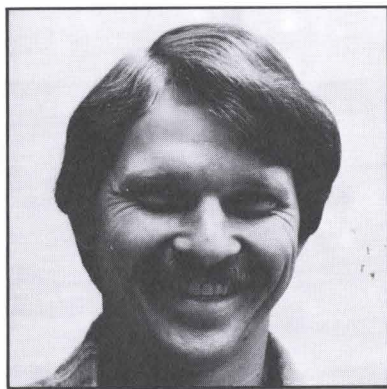


DECEMBER 1980



SUNDAY	MONDAY	TUESDAY	WEDNESDAY	THURSDAY	FRIDAY	SATURDAY
	1	2	3	4	5	6
7	8	9	10	11	12	13
14	15	16	17	18	19	20
21	22	23	24	25	26	27
28	29	30	31			

Meet the Photographers . . .



Daniel Merchant

JULY

Bridge Over History

Daniel C. Merchant, BN brakeman/switchman
St. Paul, Minnesota

"Bridge Over History" depicts the Stone Arch Railroad Bridge spanning the Mississippi River between Minneapolis and St. Paul. This spot also marks the junction of eastern and western United States and the northern end of Mississippi navigation. Dan Merchant used his Pentax 6X7 camera to record it.



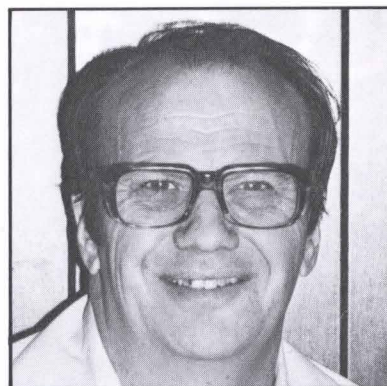
Jane Kriete

AUGUST

Summer on the Plains

Jane H. Kriete
Downers Grove, Illinois

Jane Kriete, a medical secretary in Chicago, and her husband Russell, a BN draftsman, are both interested in photography and take photography vacations. While returning home from Minnesota, the Krietes' stopped at dusk to make this photograph before entering the freeway outside Davenport, Iowa. Camera used was an Exakta. Film was Kodachrome 64. Exposure was 1/100th of a second at f2.8.



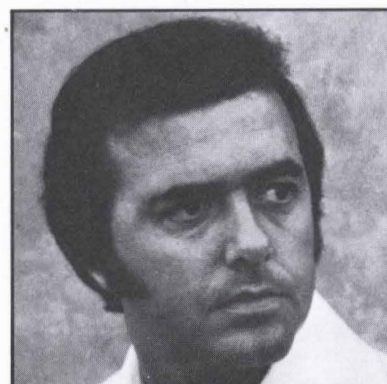
James Greear

SEPTEMBER

Sylvan Path

James P. Greear, BN telegrapher
St. Paul, Minnesota

James Greear photographed this scene in a bird sanctuary on the north end of Lake Harriet near the Rose Gardens in Minneapolis. He used a Rolleiflex T. and Ektachrome 120 film. The picture was taken at 1/60th of a second between f11 and f16. Jim's other hobbies include bicycling, music and hiking.



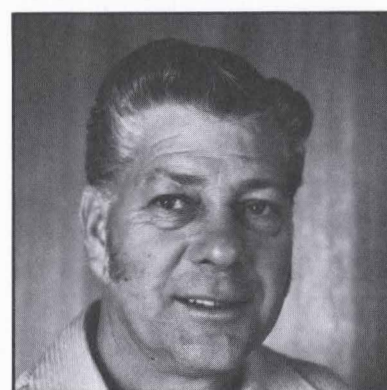
James Groe

OCTOBER

Sentinel for All Seasons

James O. Groe, BN central payments dept. control clerk
St. Paul, Minnesota

Lake Superior's famous landmark, Split Rock Lighthouse, located 45 miles north of Duluth, Minnesota, was photographed on a beautiful autumn day by James Groe. He used a Nikon FE with a 43-86mm zoom lens and a polarizing filter. Film was Kodacolor 400, 1/125th of a second at f16. Jim is in the throes of researching his family tree and also enjoys reading.



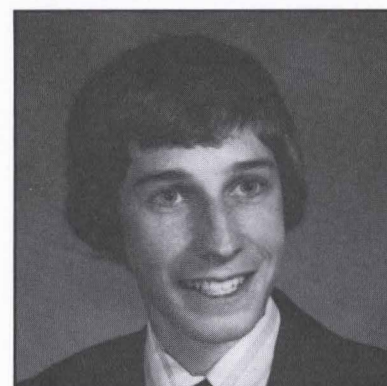
Wayne Stram

NOVEMBER

The Breaking Surf

Wayne W. Stram, BN surveyor/rodman
Gresham, Oregon

"It is extremely rare," said Wayne Stram, "to be able to have the sea conditions and the light in your favor. Out of about 50 trips to the coast, I was fortunate enough to witness this display." So are we, Mr. Stram. Wayne used a Nikon F2 camera, Kodachrome 25 film. He shot at 1/125th of a second at f11.



David North

DECEMBER

Superior Sunrise

David G. North
Fridley, Minnesota

While on a camping trip, David North photographed this sunrise on Lake Superior, about 50 miles south of Grand Marais in Minnesota. He used a Nikon FE with Kodachrome 25 film, 1/250th of a second exposure at f16. David is the 18-year-old son of Donald K. North, Director of Administration, BN Executive Department in St. Paul. Son David also enjoys stamp collecting and sports.



BURLINGTON NORTHERN