

# 1979

*This 1979 Burlington Northern  
wall calendar features winning  
selections from the company's  
Employee Calendar Photo Competition.*

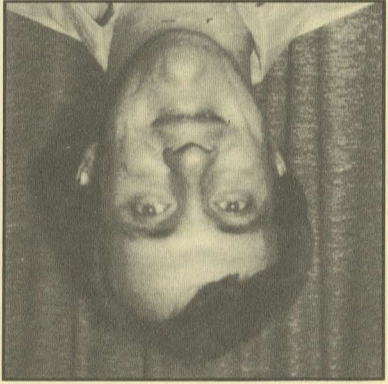


BURLINGTON  
NORTHERN



**Meet the Photographers . . .**

This 1979 Burlington Northern wall calendar features photographs taken by BN employees or members of their immediate families. During 1978, a contest produced 196 entrants who submitted 562 photographs. From that response, the judges selected a dozen for you to enjoy this year. (Photographers of the winning selections for July through December are shown on the inside back cover.)



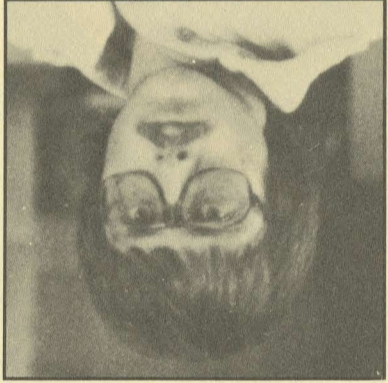
**JANUARY**  
**Sunset in Wyoming**  
 Wesley L. Haas, BN electrician,  
 Littleton, Colorado

Wes took this photograph around 7:30 PM near Bonneville, Wyoming on the rail line between Laurel and Casper. He was on vacation and was returning to Denver from Billings. Wes used a Petri camera and shot the photo on Kodachrome II film at f5.6 at 1/125th of a second. He has been making photographs for 20 years, enjoys railroad history and camping.



**FEBRUARY**  
**A Crisp Clear Day in the Capital**  
 Thomas L. Schaefer, BN mechanical engineer,  
 Eagan, Minnesota

The crispness of a cool February morning in St. Paul—it was actually -23° F.—was captured in this photograph made with a Nikkormat EL camera on Kodachrome 25 film. Tom used a tripod and cable release while shooting at 1/30th of a second at an aperture setting of between f5.6 and f8. Tom has been making photographs six years and also enjoys both snow and water skiing, boating and fishing.



**MARCH**  
**A Glorious Oregon Morning**  
 James M. Watkins, BN chief clerk,  
 Bend, Oregon

Though he has been using a 35 mm camera (a Yashica) for two years, Jim Watkins has been making photographs most of his life. His winning photograph was taken in Oregon at Crane Prairie Reservoir, a nesting area for osprey, with bald eagles often seen feeding there. Jim exposed high speed Ektachrome film at f16 for 1/125th of a second at between 9:30 and 10 AM, just after the clouds had lifted. The mountain is the South Sister of the Oregon Cascade range.



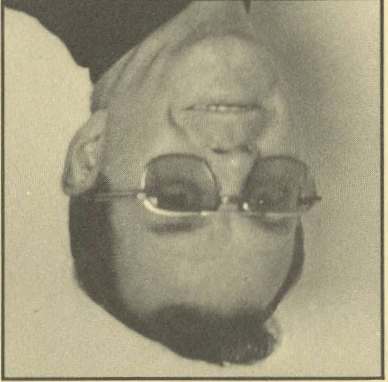
**APRIL**  
**Rochford's Best Friend**  
 Alan Eikelberger, BN conductor,  
 Edgemont, South Dakota

With a friend hanging onto his belt to keep him from falling down a steep slope, Alan Eikelberger shot a photograph of a BN train passing an abandoned mine near Rochford, South Dakota. Alan used his Minolta SRT 100 camera with the standard 50 mm lens. He used Kodachrome 64 film and shot the photo at 1/250th of a second. Alan also enjoys writing poetry and studying history. He has been making photographs for six years.



**MAY**  
**A Visitor Views Chicago**  
 Sheila Smith, daughter of BN sales representative Alfred Smith,  
 Denver, Colo.

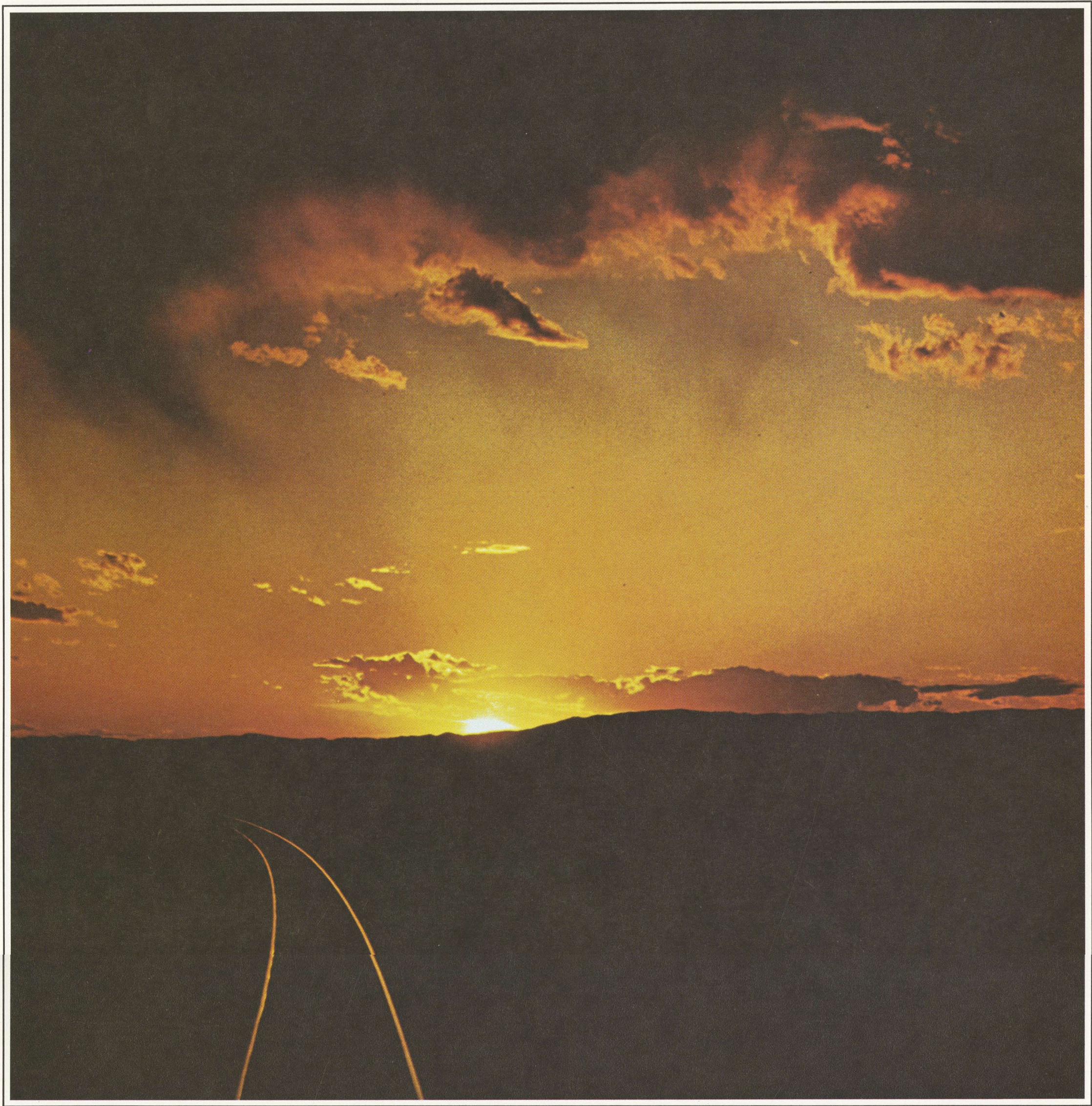
Sheila Smith, who lives in Somerville, Mass., works part-time as a medical technician. She photographed the Chicago scene from a harbor cruise ferry in Lake Michigan during a visit to Chicago to see the King Tut exhibit. Sheila used a Vivitar SLR/220 camera and Kodachrome 64 film exposed at f5.6 for 1/125th of a second. Sheila only recently enrolled in her first photography course.



**JUNE**  
**Road Into Wilderness**  
 Kenneth L. Meyers, BN supervisory agent,  
 Livingston, Montana

Deep in the Absaroka mountain wilderness south of Livingston, Ken Meyers shot the June calendar photograph. The photograph was made in the middle of the morning with a Minolta SRT 102 camera. Ken used Kodachrome 64 film and had his camera set at f16 and 1/250th of a second. Ken has been making photographs for more than 20 years and also has an interest in amateur radio.





"Sunset In Wyoming" — Photographed near Bonneville, between Casper and Laurel, by Wes Haas, BN electrician, from Littleton, Colo.

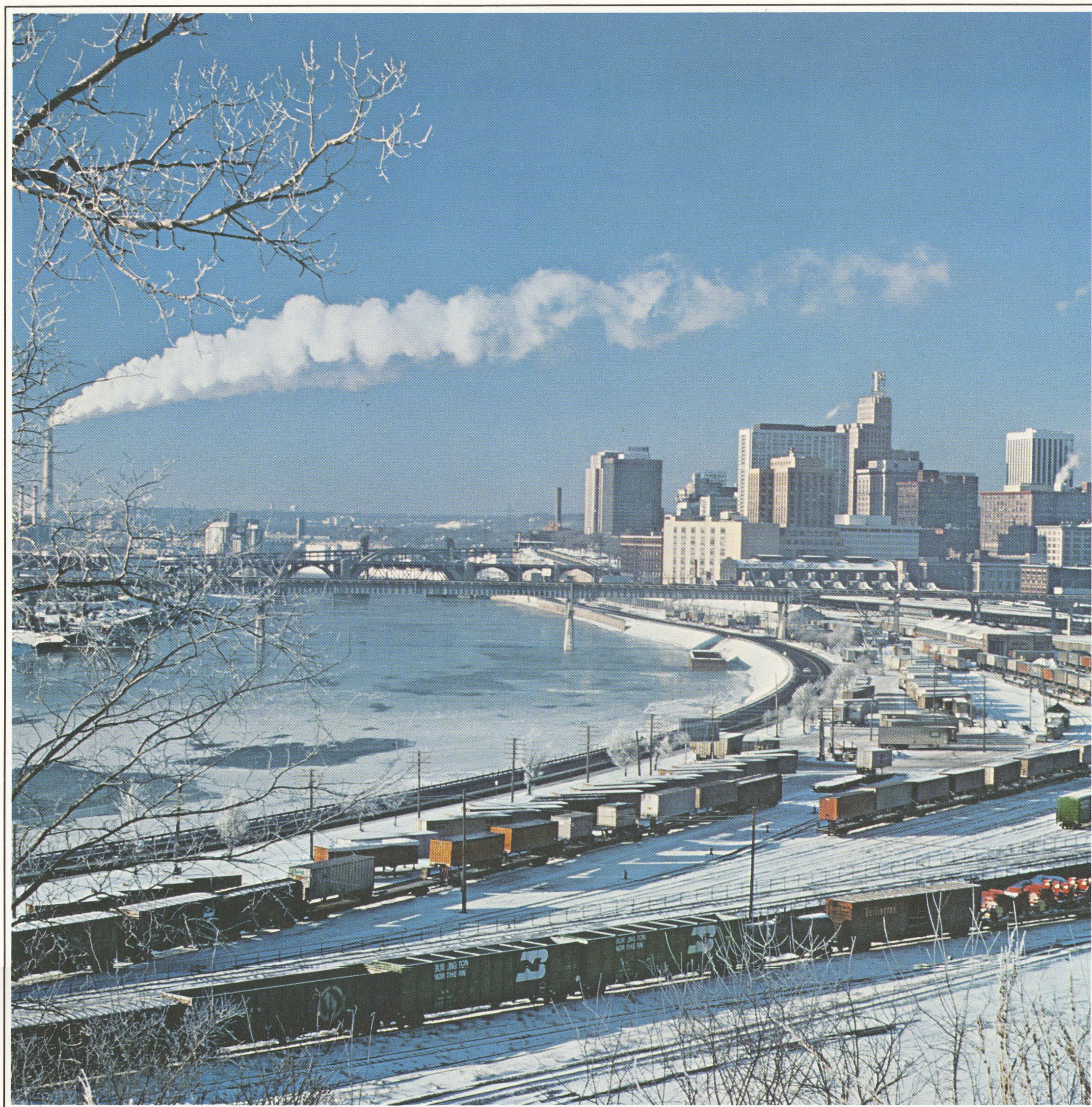


# JANUARY 1979



SUNDAY	MONDAY	TUESDAY	WEDNESDAY	THURSDAY	FRIDAY	SATURDAY
	1	2	3	4	5	6
7	8	9	10	11	12	13
14	15	16	17	18	19	20
21	22	23	24	25	26	27
28	29	30	31			





With the temperature in St. Paul at -23°F, Tom Schaefer, BN mechanical engineer, Eagan, Minn., captured — "A Crisp Clear Day In The Capital."



# FEBRUARY 1979



SUNDAY

MONDAY

TUESDAY

WEDNESDAY

THURSDAY

FRIDAY

SATURDAY

8	9	10		1	2	3
4	5	6	7	8	9	10
11	12	13	14	15	16	17
18	19	20	21	22	23	24
25	26	27	28	29	30	1





Jim Watkins, BN chief clerk, Bend, Ore., photographed — "A Glorious Oregon Morning," showing the South Sister Mountain in The Cascades.



**MARCH 1979**



SUNDAY	MONDAY	TUESDAY	WEDNESDAY	THURSDAY	FRIDAY	SATURDAY
				1	2	3
4	5	6	7	8	9	10
11	12	13	14	15	16	17
18	19	20	21	22	23	24
25	26	27	28	29	30	31





BN conductor Alan Eikelberger, Edgemont, S.D., depicted an abandoned mine, previously seen while working on a snowplow, and titled it—"Rochford's Best Friend."



**BURLINGTON  
NORTHERN**

**APRIL 1979**



**BURLINGTON  
NORTHERN**

SUNDAY

MONDAY

TUESDAY

WEDNESDAY

THURSDAY

FRIDAY

SATURDAY

1

2

3

4

5

6

7

8

9

10

11

12

13

14

15

16

17

18

19

20

21

22

23

24

25

26

27

28

29

30





"A Visitor Views Chicago" — was taken from a harbor cruise boat by Sheila Smith, Somerville, Mass., daughter of Alfred Smith, BN sales representative, Denver.



**BURLINGTON  
NORTHERN**

**MAY 1979**



**BURLINGTON  
NORTHERN**

SUNDAY

MONDAY

TUESDAY

WEDNESDAY

THURSDAY

FRIDAY

SATURDAY

1

2

3

4

5

6

7

8

9

10

11

12

13

14

15

16

17

18

19

20

21

22

23

24

25

26

27

28

29

30

31





"Road Into Wildness" — was photographed by K. L. Meyers, BN supervisory agent, Livingston, Mont., and depicts the Absaroka Mountains.



**BURLINGTON  
NORTHERN**

**JUNE 1979**



**BURLINGTON  
NORTHERN**

SUNDAY

MONDAY

TUESDAY

WEDNESDAY

THURSDAY

FRIDAY

SATURDAY

1 2

3 4 5 6 7 8 9

10 11 12 13 14 15 16

17 18 19 20 21 22 23

24 25 26 27 28 29 30





Ray Ehrich, BN marketing department officer manager, Moline, Ill., caught all the action of — "Rodeo In New Windsor."



**BURLINGTON  
NORTHERN**

**JULY 1979**



**BURLINGTON  
NORTHERN**

SUNDAY

MONDAY

TUESDAY

WEDNESDAY

THURSDAY

FRIDAY

SATURDAY

1

2

3

4

5

6

7

8

9

10

11

12

13

14

15

16

17

18

19

20

21

22

23

24

25

26

27

28

29

30

31





Using his nephew as the subject, James Sobota, brother of BN electrician, D. F. Sobota, Seattle, snapped the photo of — "Washington Beach" near Neah Bay.



BURLINGTON  
NORTHERN

# AUGUST 1979



BURLINGTON  
NORTHERN

SUNDAY

MONDAY

TUESDAY

WEDNESDAY

THURSDAY

FRIDAY

SATURDAY

1

2

3

4

5

6

7

8

9

10

11

12

13

14

15

16

17

18

19

20

21

22

23

24

25

26

27

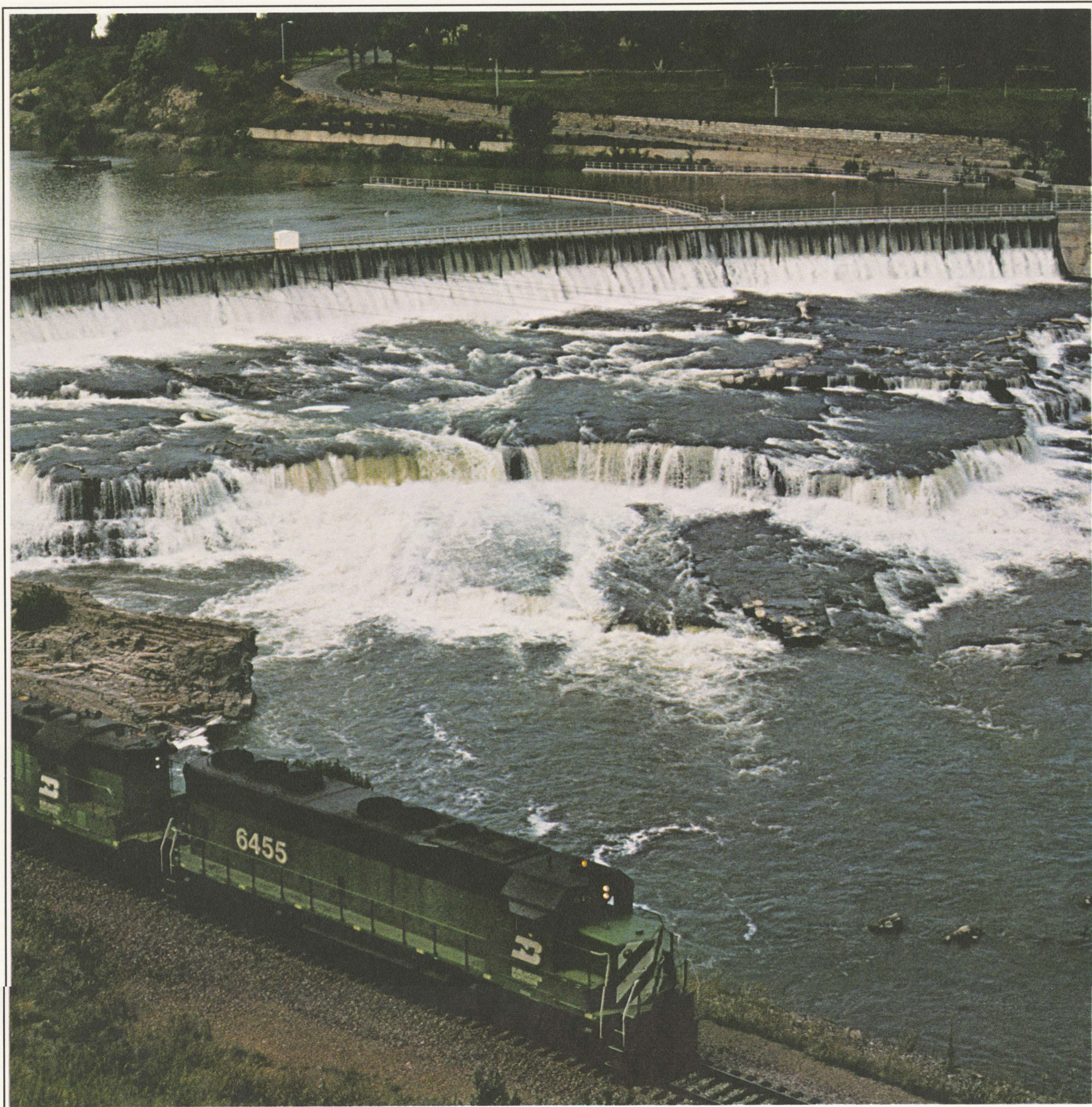
28

29

30

31





BN machinist, Gregory Hedrick, Vancouver, Wash.,  
photographed — "The Great Falls" in Montana's second-largest city.



SEPTEMBER 1979



SUNDAY

MONDAY

TUESDAY

WEDNESDAY

THURSDAY

FRIDAY

SATURDAY

1

2

3

4

5

6

7

8

9

10

11

12

13

14

15

16

17

18

19

20

21

22

23/30

24

25

26

27

28

29





"Crimson, Magenta And Scarlet" — was captured as the sun rose near Arlington, Ill., by Terry Lannholm, BN brakeman, Chicago.



OCTOBER 1979



SUNDAY	MONDAY	TUESDAY	WEDNESDAY	THURSDAY	FRIDAY	SATURDAY
8	1	2	3	4	5	6
7	8	9	10	11	12	13
14	15	16	17	18	19	20
21	22	23	24	25	26	27
28	29	30	31	28	29	30





Kirby Luther, BN system analyst, St. Paul, snapped — "Sailboats Racing On Puget Sound" while visiting Seattle.



# NOVEMBER 1979



SUNDAY	MONDAY	TUESDAY	WEDNESDAY	THURSDAY	FRIDAY	SATURDAY
				1	2	3
4	5	6	7	8	9	10
11	12	13	14	15	16	17
18	19	20	21	22	23	24
25	26	27	28	29	30	





"Ascending Marias Pass" — was taken in Montana by Mike Gelhaus,  
BN locomotive fireman, who lives in Spokane, Wash.



BURLINGTON  
NORTHERN

DECEMBER 1979



BURLINGTON  
NORTHERN

SUNDAY

MONDAY

TUESDAY

WEDNESDAY

THURSDAY

FRIDAY

SATURDAY

1

2

3

4

5

6

7

8

9

10

11

12

13

14

15

16

17

18

19

20

21

22

23/30

24/31

25

26

27

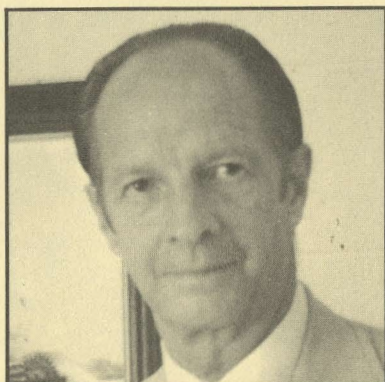
28

29



## Meet the Photographers . . .

---



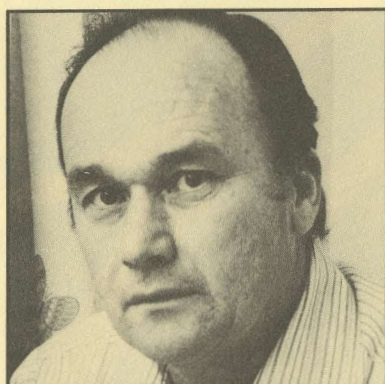
Ray Ehrich

### JULY

#### Rodeo in New Windsor

**Ray Ehrich, BN marketing department office manager,  
Moline, Illinois**

Ray Ehrich's winning photograph of "Rodeo in New Windsor" was taken in a small Illinois town of 650 residents. In mid-summer, more than 14,000 visitors flock to New Windsor for the three day rodeo celebration. He used a Yashica Mat 124G camera, Kodacolor 80 film, and captured the action with a shutter speed of 1/250th of a second and an aperture setting of f5.6.



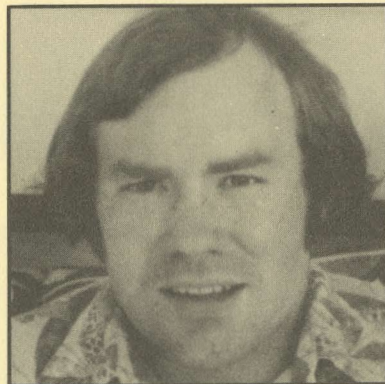
James Sobota

### AUGUST

#### Washington Beach

**James Sobota, brother of BN electrician D. F. Sobota,  
Seattle, Washington**

Jim Sobota and his nephew spent a warm, summer day together on Shi Shi Beach, near Neah Bay, Washington, and Jim photographed the boy doing what all boys his age do. One of the photographs is the winner for August. Jim used a Nikon F2 and Kodachrome 64 film. When he isn't earning his living as an advertising artist in his studio, Jim likes to make use of the outdoors: hiking, tennis, bicycling, travel; and make use of his camera.



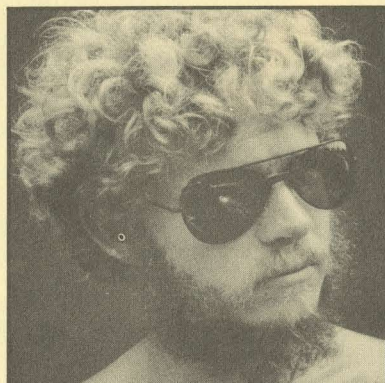
Gregory J. Hedrick

### SEPTEMBER

#### The Great Falls

**Gregory J. Hedrick, BN machinist,  
Vancouver, Washington**

On a weekend visit to Great Falls, Montana, Gregory Hedrick photographed "The Great Falls" from just above Giant Springs Park. He used a Canon FTB with Kodachrome 64 film. His aperture setting: f5.6. His shutter speed: 1/250th of a second. Gregory has been taking photographs for four years and likes music, playing the guitar and singing for his church.



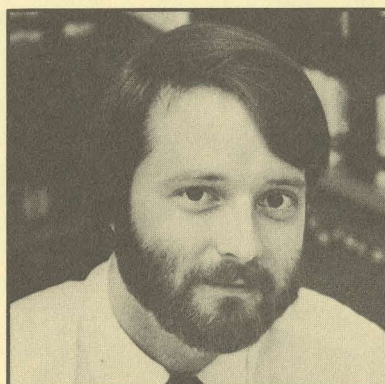
Terry Lannholm

### OCTOBER

#### Crimson, Magenta and Scarlet

**Terry Lannholm, BN brakeman,  
Abingdon, Illinois**

The intriguing photograph of a sunrise framed by a signal tower just outside Arlington, Illinois was taken by Terry Lannholm with a Honeywell Pentax Spotmatic camera. He used Ektachrome film at f4 for 1/125th of a second. The photograph was taken from a train at 60 MPH. Terry has been making photographs for four years and is also into water skiing, motorcycles, reading and listening to music.



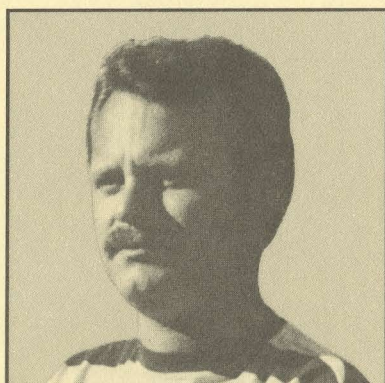
Kirby Luther

### NOVEMBER

#### Sailboats Racing on Puget Sound

**Kirby Luther, BN system analyst,  
St. Paul, Minnesota**

Kirby Luther began taking photographs while vacationing in Europe in 1970, has never been in a photo class. While on a walk along Puget Sound in his hometown of Seattle, Kirby shot November's winner of the sailboats and the lighthouse using a Canon FT-QL camera with a 135 mm lens. His film was Agfachrome, a German-made film with an ASA of 64. This photograph happens to be one of Kirby's favorites.



Mike Gelhaus

### DECEMBER

#### Ascending Marias Pass

**Mike Gelhaus, BN locomotive fireman,  
Spokane, Washington**

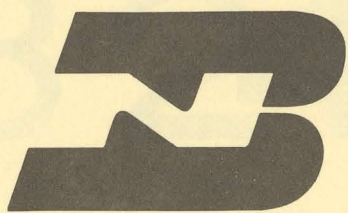
Early one morning, Mike Gelhaus was driving back to Belton, Montana, on the edge of Glacier National Park, in hopes of seeing an eastbound train to shoot. Midway between Belton and Essex, the train appeared. Mike used a Canon SLR TX camera and Kodachrome 25 film. With 12 years of photographic experience, and a lifetime of being captivated by locomotives, Mike's friends think he's a "real nut", taking photographs of trains even after working on them all day.



JULY 1979

BURLINGTON  
NORTHERN

BURLINGTON  
NORTHERN



BURLINGTON NORTHERN