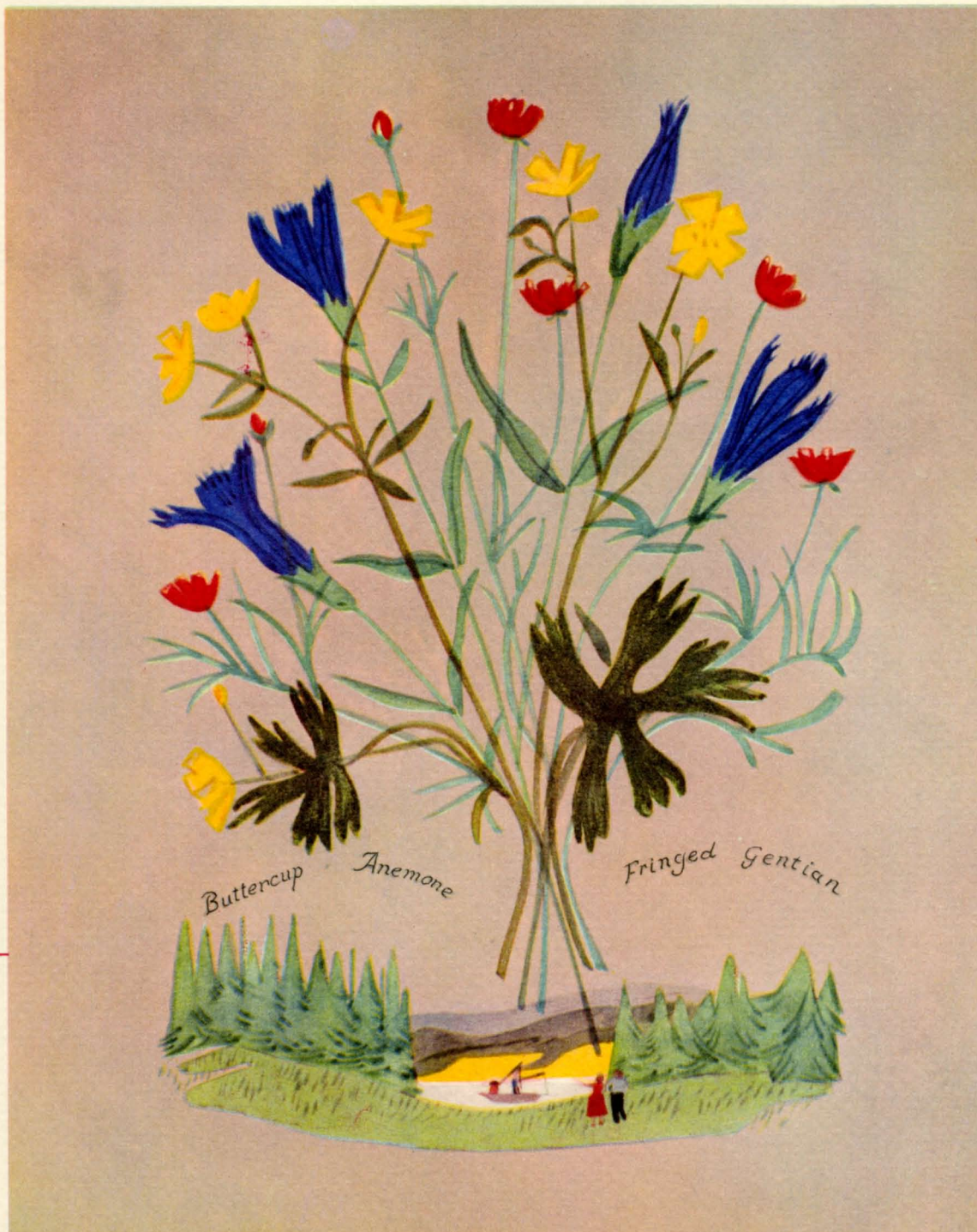


ABOARD THE

DENVER ZEPHYR



"As you travel over this bountiful land of ours
God has bestowed upon us. Let us acknowledge

To Insure Prompt Service, Please Write Each Item on Meal Check.

A la Carte

APPETIZERS

Shrimp Cocktail, 1.25 Tomato Juice, 40 Celery Hearts, 50

SOUPS

Puree of Mongole Consomme Anglaise
Cup, 40; Tureen, 75

ENTREES

Boneless Rocky Mountain Trout (10 oz.), Saute Meuniere 3.85
Cottage Fried Pork Chops, Country Gravy, Apple Sauce 3.60
Baked Young Turkey, Southern Style Stuffing, Cranberry Sauce 3.50
Roast Top Sirloin of Beef, au Naturel 4.00
Broiled Sirloin Steak (12 oz.), Button Mushrooms 4.30
Ham Steak Saute, with Eggs, Potatoes Du Jour 3.50

Hot Biscuits Served with Entrees

VEGETABLES

Baked Potato, with Sour Cream, 50 Candied Sweet Potatoes, 50
Green Beans, Saute with Bacon, 50
Baked Corn and Tomatoes, 40

SALADS

(Includes Hot Biscuits)

Tossed Salad Bowl, Louisiana, 2.50
(Tossed Salad with Shrimp)

Lettuce and Tomato Salad, 1.35

Bon-Ton Salad, 1.25

Choice of Dressing: French, Olive Oil & Vinegar,
1000 Island, Bleu Cheese or Mayonnaise

Chicken Salad, Mayonnaise, 2.25 Head Lettuce, Half Portion, 75
Chilled Fruit Salad Plate, Cottage Cheese, 2.00

DESSERTS

Hot Mince Pie, 50

Chocolate Sundae, 55 Chilled Grapefruit, 60
Baked Apple with Cream, 75
Pineapple Rings in Syrup, 45

BEVERAGES

Coffee, per Pot, 35 Tea, per Pot, 35
Hot Chocolate, per Pot, 35 Decaffeinated Coffee, per Pot, 35
Individual Milk, 25

*Additional charge will be made for service outside the dining car.
This service is subject to delay when dining car is busy.*

It will be a pleasure to serve any dish not listed that you may wish if it is available.

Saccharin is available upon request.

COCKTAIL

Manhattan
Old Fashioned

WINE

DOMESTIC
Champagne,

LIQUOR

Canadian
Bourbon
Scotch, Irish
Beer

Comp
List

IOWA AL
WINE 04c
WHISKEY 10c

M
(For Child

Fruit Juice
Hamburg
Potato
Bread
Ice

Cup
Peanut Butter
Ice

Parents
their meal
or Purchase
of Select
for Childre
(Exce

, may you be ever reminded of the grace Almighty
e our debt to Him with prayers of thanksgiving."

"Table Flowers are Colorado Carnations"

Select Dinner Menu

To Insure Prompt Service, Please Write Each Item on Meal Check
(Price opposite each Entree includes Soup or Tomato Juice, Potato, Vegetable, Dessert and Beverage)

TAILS

a, Martini or
ioned, 1.00

INES

- IMPORTED
6 oz. Dom., 1.50

UORS

Whiskey, 1.10
bon, 1.10
mported, 1.20
- Ale, 50

lete Wine
Available

COHOLIC TAX
TAX PER OUNCE
TAX PER OUNCE

ENU

ren Under 12)
1.75

or Cup of Soup
arger Patty
- Vegetable
d - Butter
Cream
Milk

\$1.00

of Soup
and Jelly Sandwich
Cream
Milk

May Share
s with Children
e Half Portions
Dinner Menu
en at Half Price
ept steak).

Puree of Mongole

Tomato Juice Cocktail

Consomme Anglaise

Relish Tray

ENTREES

Boneless Rocky Mountain Trout (10 oz.), Saute Meuniere 4.60
Cottage Fried Pork Chops, Country Gravy, Apple Sauce 4.35
Baked Young Turkey, Southern Style Stuffing, Cranberry Sauce..... 4.25
Roast Top Sirloin of Beef, au Naturel 4.75
Broiled Sirloin Steak (8 oz.), Buttom Mushrooms 5.10

Hot Biscuits

CHOICE OF TWO

Baked Potato with Sour Cream
Baked Corn and Tomatoes

Candied Sweet Potatoes
Green Beans Saute with Bacon

* * *

Bon-Ton Salad — Choice of Dressing

Lettuce—Tomato—Asparagus—Pimento
(Served with these meals, 50c additional)

* * *

Hot Mince Pie
Chocolate Sundae

Chilled Grapefruit
Pineapple Rings in Syrup

Coffee

Tea

Milk

Decaffeinated Coffee

Supper Suggestions

Broiled Rib Lamb Chops, Baked Potato, Dinner Salad 4.00
Double-Deck Chicken Sandwich on Toast, Garni, Potato Salad 2.35

Coffee

Tea

Milk

Decaffeinated Coffee

Employee in Charge of this Car is _____

J. W. Vaghy, Manager of Dining and Sleeping Cars, Chicago
W. F. Burke, General Passenger Traffic Manager, Chicago

TRUE LOW-COST, MASS TRANSPORTATION



Native Colorado Flowers

Upper left: Colorful bouquet of Wild Roses and Lupine.

Front Cover:

BUTTERCUP: The Buttercup family includes the Pasque Flower, Globe Anemone, Snow Buttercup, and others. Flowers are multi-colored . . . white or pale lavender, deep red, yellow, pale cream, etc. Flowers usually have five or more delicate petals.

FRINGED GENTIAN: Flowers are two to three inches long of four deep purple-blue petals which flair outward in sunlight. Bloom in August and September.

These are reproductions of original floral paintings in the bedrooms and compartments of the Denver Zephyr.

Upon request, the dining car steward will gladly present you with reproductions, suitable for framing.