



**Burlington  
Route**

*Way of the Zephyrs  
and Vista-Domes*

**Colorado**

**...the perfect  
vacationland**

**Burlington  
Route**





# Colorado

## GLORIOUS PLAYGROUND OF THE ROCKIES

Man could not ask nor Nature conceive a more glorious vacationland than Colorado. Within the boundaries of this great state lies a vast region that for sheer mountain beauty, exhilarating climate, and wealth of scenic wonders surpasses anything to be found on the American continent.

that transcends the imagination; of superlatives dwarfed by reality. And over it all, the mountains—always the glorious mountains.

### *A Mountainland Surpassing Switzerland*

Colorado contains the greatest extent and widest variety of mountain scenery to be found anywhere in the country. The average elevation is 6800 feet above sea level . . . greater than that of any other state. Here are over a thousand peaks whose craggy heads rise to an elevation of more than 10,000 feet. In fact (and this may surprise you), at least 30 Colorado peaks surpass the 14,110 feet of that famous old patriarch, Pikes Peak.

Not even vaunted Switzerland can compare with such an incontestable array of "sky sweepers." They cover an area six times as great as that of the renowned European playground. There are 54 separate mountains in this great Western vacationland that rise to an altitude of 14,000 feet or more, compared with only 9 such heights in the Swiss Alps.

### *"Come UP to Colorado!"*

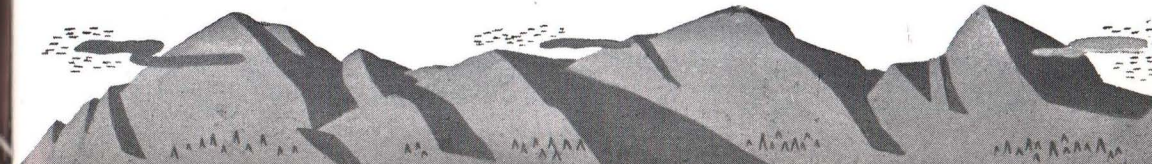
Wherever you go, whatever you do in Colorado, there is always the unforgettable, magnetic lure of the moun-

Wild broken mountain masses rear their heights in snowy solitude . . . majestic, everlasting, never tiring to the eye. Down their precipitous slopes move ponderous glaciers, still carving their inexorable way toward the valleys below. Tumbling mountain streams, gem-like lakes, deep virgin forests, mysterious sand dunes, prehistoric ruins, old mining camps, radioactive hot springs, and many other delightful manifestations of Nature present an almost endless array of outdoor attractions.

Here are the deepest canyons in the world through which a railroad runs . . . the highest summits in the world attained by the "iron horse" . . . the highest yacht anchorage in the world. The highest skyline drive in the world crosses the Colorado Rockies, and the highest auto highways in the world ascend Mt. Evans and Pikes Peak, with scenes of breathtaking beauty all the way. Here is a country of endless, magnificent panoramas and grandeur

## Index

	Page		Page
Colorado—Glorious Playground of the Rockies . . . . .	1	List of Hotels and Resorts:	
Denver—the Mountain Gateway . . 10		Typical Vacation Places . . . . .	38-39
Rocky Mountain National and Estes Park . . . . .	14	Estes Park Region . . . . .	40
Boulder-Glacier Region . . . . .	22	Denver Hotels . . . . .	40
Colorado Springs and the Pikes Peak Region . . . . .	25	Colorado Springs Hotels . . . . .	40
Map of Colorado State . . . . .	28-29	Pueblo Hotels . . . . .	40
Pueblo and Royal Gorge . . . . .	30	Dude and Guest Ranches . . . . .	41-44
Mesa Verde National Park and Western Colorado . . . . .	32	Girls' and Boys' Camps . . . . .	45-46
Dude and Guest Ranches . . . . .	34	Colorado General List . . . . .	47-51
Boys' and Girls' Camps . . . . .	36	Burlington's Colorado Service . . 52-54	
		Map of Burlington Route . . . . .	56
		Burlington Representatives and Travel Bureaus . . . . .	57







*Pikes Peak, mighty "Patriarch of the Rockies," dominates the landscape near Colorado Springs.*

tains. Night and day they dominate the scene, pulling you irresistibly toward the heights. Almost automatically, your eyes raise in anticipation and your feet feel the urge to travel the upland trails.

Colorado's mountains are unique in their accessibility to everyone. Nowhere in the world is mountain climbing such a universal vacation sport. All summer long, amateur mountaineers take keen delight in hiking to the summit of the many peaks that yield their heights with ease. There are, of course, many pinnacles that should be attempted only by the hardest and most expert climbers . . . and for this select fraternity there is no lack of high adventure.

#### *Altitude Is No Deterrent*

For those who have never vacationed in the higher altitudes, let it be said that elevations anywhere up to 10,000 feet should entail no difficulty in breathing. When motoring to even the highest altitudes reached by auto

roads, few visitors notice any discomfort. In the case of more strenuous activities at still higher elevations, such as hiking or horseback riding, it is always wiser of course to ascend into these rarefied atmospheres more leisurely than usual.

Almost everyone rides. Here riding is one of the most exhilarating of sports, and perfectly safe for anyone. Good saddle horses, well broken and accustomed to the mountain trails, are available at practically any village or resort you may select. Guides, too, may be had for the longer or more difficult trips.

#### *Motoring Joys in Colorado*

Perhaps you would like to spend day after glorious day motoring whither fancy dictates. Well, Colorado has hundreds of miles of splendid highways, spectacular, comfortable and safe. Most of them are wide, plainly marked and well protected, with frequent switchbacks leading easily and smoothly to the highest summits.



*Fair Glacier hangs almost vertically from jagged peaks on the rim of the grim Hell Hole, in the Boulder Glacier region.*



*Right—Bridal Veil Falls' feathery cascade and famed Spouting Rock.*

Page 3

*Spring in the Colorado Rockies—countless melting snow fields in this Isabel Glacier and Indian Peaks region find their way into shimmering Long Lake.*







*The majestic Never Summer Range of the Rockies provides the background for a breath-taking panorama of Alpine beauty.*

To enjoy these scenic highways to the utmost, it is neither necessary nor particularly advisable to drive one's own car over a long, hot tiresome route to Colorado. It is far more comfortable, and much faster to go in the coolness and comfort of a modern, air-conditioned Burlington train, availing oneself of motor transportation on arrival in the West.

You may rent a private car at a number of points in Colorado. The rates are reasonable and several reputable rental services are available. Many of the better known highway trips also are made by modern motor buses operating on regular schedules from such points as Denver, Boulder, Fort Collins, Colorado Springs, Pueblo and Canon City.

#### *Glorious National Forests*

If your idea of a perfect vacation is to shun the beaten paths and "rough it," nowhere will you find better facilities or more ideal surroundings. Bring your own duffle or depend on local experienced outfitters to provide the necessary equipment . . . guides also if you particularly dislike camp chores. Seventeen national forests, with mil-

lions of acres of splendid timberland, lakes and streams, are open to fisherman, horseman and camper alike. As a matter of fact, all summer long the entire state is one vast camping ground where young and old find happiness and new zest for living, each in his own way.

#### *A Skier's Paradise*

To the winter sports enthusiast, colorful Colorado is an unbelievable combination of everything needed for full enjoyment. Colorado's climate and altitude provide ideal snow conditions from early fall until May. Smooth, open slopes invite skiers to a score of locations throughout the state, and almost all furnish a variety of sport for both the expert and the novice, as well as the average skier.

Ski resorts with instructors, lodges, and towns, abound in the state. One of the best-known and best-equipped ski centers to be found anywhere is at Aspen, noted for its many broad, sweeping slopes and trails as well as its fine accommodations. Located here is one of the longest chair lifts in the world.

Other skiing centers are Winter Park, Berthoud Pass, Steamboat Springs, Loveland Basin, Hidden Valley (Estes Park), and the Pikes Peak (Ski Broadmoor) region.

Colorado is truly every man's Vacationland. Those who travel on a limited budget will find just as much opportunity for recreation and pleasure as those to whom expense is no consideration. Nature's generous hand holds the key to worthwhile living for everyone, to summer joys you will long remember, to gorgeous everlasting landscapes by the Master Artist.

There are hosts of places offering all manner of hot and cold curative springs. These springs are well scattered throughout practically every section of the state and are unusually accessible. Thousands of people come to Colorado annually to enjoy these health-giving baths, many of which are highly radio-active and of considerable medicinal value. The combination of the curative waters and invigorating mountain air works wonders.

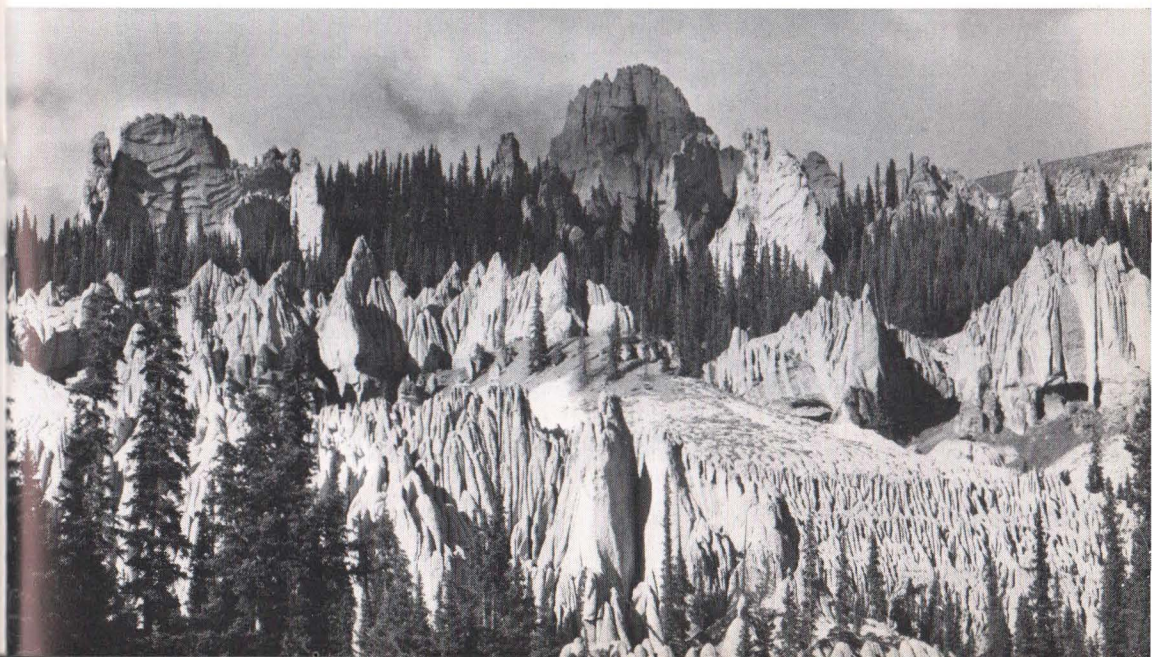
#### *Around the Eastern Gateways* Northwest from Denver and Boulder

lies the wonderful region of mountains, valleys, lakes and forested slopes in and around Rocky Mountain National Park—one of two great national parks included in Colorado's far-flung boundaries. This vast area is a glorious mountain garden, one of the most popular of all the Western vacationlands. South of the park, continuing along both sides of the backbone of the Rockies, is the wild, precipitous Boulder-Glacier region of peaks, gorges and ice fields . . . famous among geologists. Nearby are a number of fascinating "ghost" towns which figured so prominently in Colorado's early romantic gold mining days still redolent of those historic, turbulent times.

Colorado Springs is the focal point for excursions into the innumerable reaches of that famous scenic region which includes Pikes Peak, Manitou and Garden of the Gods. Here also are located a large group of curative mineral springs. Farther south lies Pueblo, an important industrial city and one of the principal gateways to San Isabel National Forest and the playgrounds of Western Colorado.

Page 5

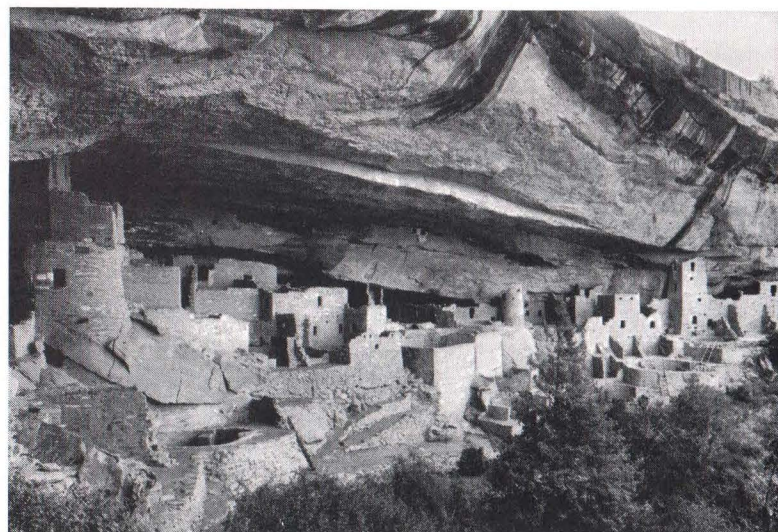
*The grotesquely eroded spires of Wheeler National Monument southwestern Colorado.*







*Snow-clad peaks, deep green forest and shining lake waters—  
Denver Mountain Parks.*



*Ruins of prehistoric Cliff Palace . . . Mesa Verde  
National Park, southwestern Colorado.*

### *Western Colorado*

While perhaps not as well known as other recreation regions in the state, the seemingly limitless section of Western Colorado is infinitely varied in its terrain and scenic wonders. There are great mountain masses such as the Sangre de Cristo, San Miguel, San Juan, Gore and Park ranges . . . Uncompahgre, Cochetopa, Montezuma, Arapahoe, and Holy Cross national forests . . . Colorado's famous mining districts of Leadville (at an altitude well over 10,000 feet), Ouray, Silverton and Telluride . . . Grand Mesa, a wonderful flat top mountain raised by some prank of nature . . . hundreds of hot mineral springs.

In the far Southwest corner lies Mesa Verde National Park, a strange land of age-old mystery, containing the relics of a long-forgotten civilization and well preserved ruins of a race of cliff dwellers who are still a puzzle to the historians. Nearby is the Yucca House National Monument, another place of prehistoric ruins.

Western Colorado contains five other

national monuments—areas set aside by the U. S. Government to perpetuate unique natural phenomena. There is the Colorado National Monument near Grand Junction; Wheeler, near Creede; Great Sand Dunes, near Alamosa; Holy Cross, near Redcliff; and the famed Black Canyon of the Gunnison River, near Montrose. Each of these places has some special, inimitable charm of its own.

Colorado's wonderful climate is in perfect complement to the sights you see, the things you do, and the places you choose to visit. The crisp, dry air, almost crystalline in its purity, invigorates both mind and body. It gives one new health and strength, sweeps away the cobwebs from a brain slowed down by the struggle and tumult of this workaday world. Normal perspective returns full force, true values reappear in their proper light, and life seems much more worth while.

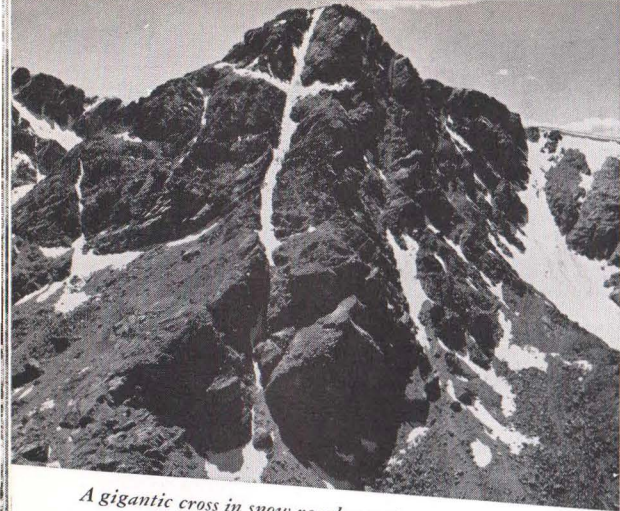
### *A Land You'll Never Forget*

Who could forget the enthralling vision of mountain peaks at sunset? Who so calloused as would not breathe

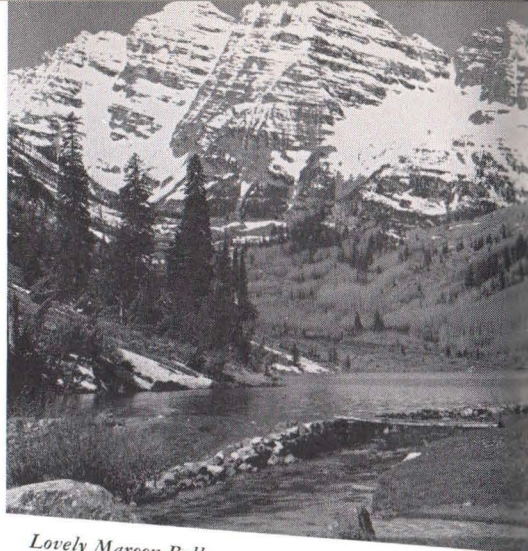


*Aerial view of Denver, the "Mile High City,"  
showing the golden-domed State Capitol at lower right.*





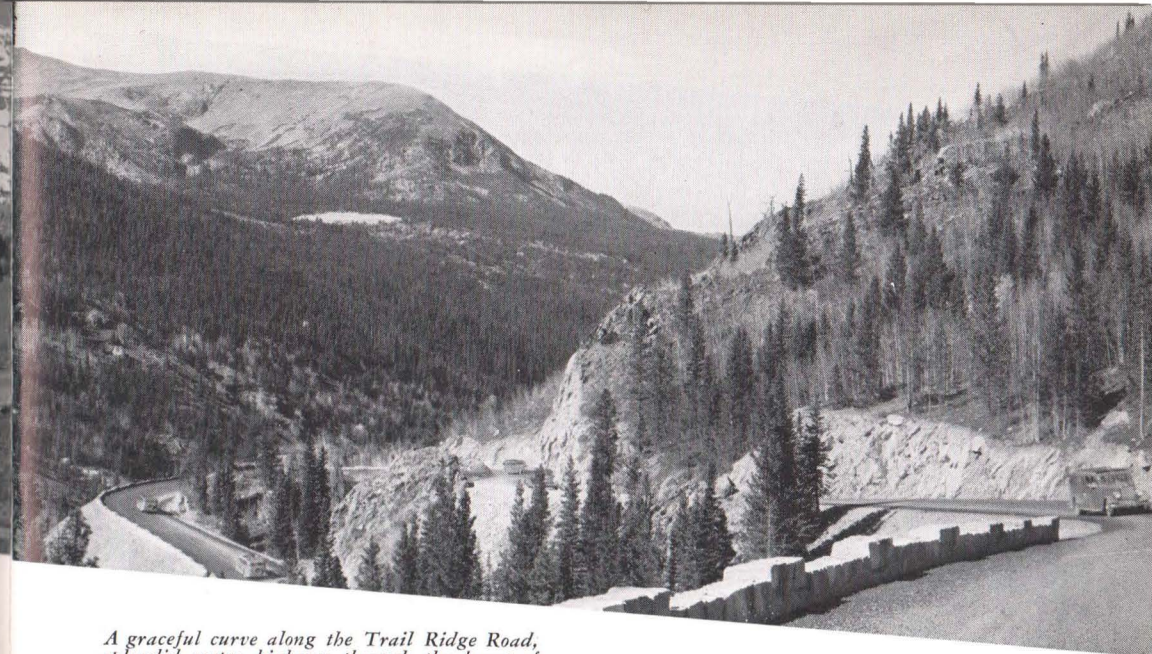
*A gigantic cross in snow reaches to the 13,978 foot tip of the Mount of the Holy Cross.*



*Lovely Maroon Bells, a renowned beauty spot in the vast vacationland of Western Colorado.*



*As an artist might paint a Colorado Summer . . . a bridle path lined with quaking aspen, leading to the mountains.*



*A graceful curve along the Trail Ridge Road, splendid motor highway through the heart of Rocky Mountain National Park.*

more deeply to see, from some hard-won summit, the wilderness world far far beneath? How erase from memory the vision of a wild and silent ice-fed lake, mirroring the brooding mountains and the sky's inconceivable blue? Everything you do or see impresses itself on your memory as treasured incidents in a perfect vacation.

The smell of wood smoke drifting through the pine trees is like some rare and heady perfume in the crisp clean air. Long after you have left the Rockies, you will remember the sweet aroma with a strong nostalgic longing. It will take you back to the glorious Skylands of Colorado . . . to a land almost too beautiful for reality, yet always ready and waiting for you.

#### *Summer School Sessions*

Recognizing the particular advantages Colorado offers in the way of delightful vacation and recreation activities, thousands of teachers and students from all over the country go there to attend summer school sessions.

Extensive summer courses are offered at such fine schools as the University

of Denver; Colorado Woman's College, Denver; University of Colorado, Boulder; Colorado College, Colorado Springs; Colorado State University, Ft. Collins; School of Mines, Golden and Colorado State College at Greeley.

Colorado is "yours for the asking"—now more easily, quickly and comfortably reached than ever before. Just overnight from sunstroke and sticky heat, you will find quick relief from the severity of any American summer . . . warm, pleasant days and cool, starry nights—a combination that has made Colorado famous—the world over. Summer and spring are one and the same season . . . summer by day, and wonderful spring by night.

On one of Burlington's fine air-conditioned trains, your vacation begins when you step aboard. Whether you take the famous stainless-steel Denver Zephyr or the new California Zephyr featuring Vista-Dome cars from Chicago or ride the Texas Zephyr from the Lone Star State—you'll find rest and relaxation that will add hours of enjoyment to your vacation.



# The Mountain Gateway-DENVER



*One of the many beautiful city parks in Denver.*

DENVER, the "Mile High Queen City of the Rockies," is the logical gateway to Colorado's endless display of wonders and fascinations. It is the portal to 12 national parks and 32 national monuments in the vast Western Wonderland. This thoroughly modern city is known throughout the country as a genial host experienced in catering to the needs and desires of a great multitude of visitors who annually make the city their permanent or temporary headquarters for Colorado vacations.

## *The Mountains Call*

There is an exhilarating sense of freedom about Denver that sets it apart from other cities of a half million people. You feel it the moment you step off a Burlington train. Perhaps it is the constant sight of the glorious mountains, only twelve miles away, for wherever you go there is a grand

view of the Snowy Range, from Long's Peak to Pikes Peak.

The city has a remarkable climate—dry, crystalline, never very hot in summer nor severely cold in winter. Days are bright with sunshine, but never humid or oppressive; the crisp nights invite blankets. Denver's altitude is exactly one mile (5280 feet), and the health-giving mountain ozone works wonders on the constitution. The "two-weeks vacationer" gets more tonical benefit at a lower comparative cost than in almost any summer region accessible in a limited time.

Little wonder, then, why Denver is today an inviting summer convention city. It is just a short distance from lofty mountains, mighty glaciers, wilderness lakes, sparkling streams that teem with trout, great forests, historic places, and peaceful valleys where every hour is a joyful experience in

living. Broad smooth highways grid-iron the lower levels, while the higher country is fretted with trails for hiker and horseman. Rail and bus lines operate from Denver to most of the more popular sections of the state.

## *A City of Beauty*

Visitors to Colorado are deeply impressed with the beauty of this western metropolis, its impressive array of attractions. There are 54 city parks, two municipal bathing beaches, golf courses, tennis courts and many civic buildings which merit inspection. One of the most imposing structures is the State Capitol with its gold-encrusted dome . . . an architectural detail peculiarly appropriate. It was the discovery of gold in 1859, at Idaho Springs 40

miles away, that gave the impetus to Denver's rapid growth.

Other outstanding edifices include the State Museum . . . the United States Mint . . . Denver Museum of Natural History, and the famous Civic Center, featuring a great open-air Greek Theater seating 5000, where concerts are held weekly throughout the summer.

Outstanding among Denver's numerous outdoor lures are the renowned Denver Mountain Parks . . . the most unique, municipal-owned scenic region in the world. Over two score separate areas, covering approximately 150 square miles of healthful playground, are included in this park system, connected by over 100 miles of fine highway.

## *Glorious Motor Trips*

Reached by automobile in an hour or less, over splendidly scenic highways, are all manner of delightful summer hotels, resorts, cottages and camping spots. It would be difficult to imagine a more easily accessible or diversified vacation area than these mountain parks, offering fascinating motor trips practically all year 'round.

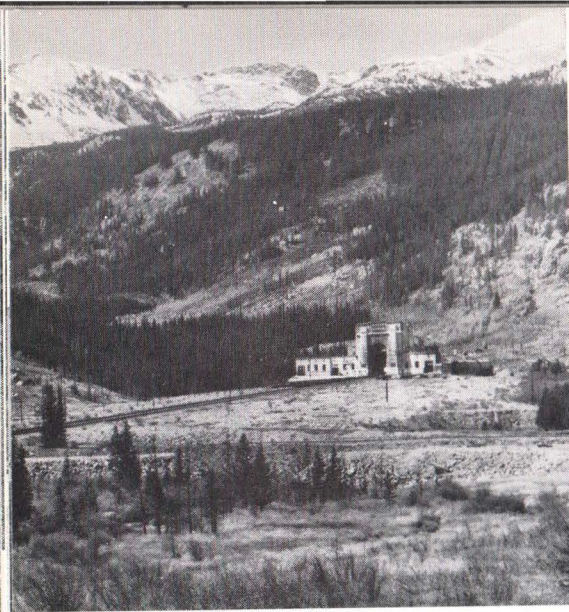
One of the most wonderful trips encircles the major portion of the entire park system, yet can be made in just one day. After leaving Golden, it ascends the serpentine Lariat Trail to Lookout Mountain which, in truth, "looks out" over the surrounding plains. Here is the grave of "Buffalo Bill" Cody, and in Pahaska Tepee Museum close by are many relics collected by him during his glamorous life. At Genesee Park the road spirals up to the top of Genesee Mountain, then continues on through Bergen Park to Clear Creek and Idaho Springs of early gold mining fame.

Turning south to follow Chicago Creek, the route takes a thrilling as-



*Skiing in midsummer! . . . on a glaciated slope in the Denver Mountain Parks.*





*Eastern entrance to the Moffat Tunnel*

cent to Echo Lake, thence over the world's highest mountain highway to the crest of Mount Evans (14,260 feet) for a mighty view of jagged peaks extending for 100 miles. The return route is equally delightful . . . via Troutdale, Evergreen, through Bear Creek Canyon to Morrison, where many a dinosaur's bones have been excavated; then north through Red

Rocks Park, newest of the Denver Mountain Parks.

Another worthwhile trip follows Clear Creek past Idaho Springs to the old mining districts of Empire, Georgetown and Silver Plume, surrounded by towering, mine-scarred peaks. On the registers of Georgetown's once-famous hotels are the names of many a notable of the 1870's.

Equally close to Denver is another popular vacation region, the canyon of the South Platte River . . . one of the best known of Colorado's many resort sections. The mouth of the canyon is only 28 miles from the city, and for 40 miles beyond there are numerous delightful vacation places . . . hotels, furnished cottages and peaceful mountain resorts . . . on both sides of the river.

#### *Moffat Tunnel Route*

Trains operating from Denver, through the Moffat Tunnel and mighty Gore Canyon, thence over the Dotsero Cutoff along the Colorado River, give the Burlington a direct and splendidly scenic route into Western Colorado. One thinks of the Colorado River in terms of tremendous canyons, gorges and yawning chasms, and nowhere is



*Amazing twists of Lariat Trail up Lookout Mountain to Buffalo Bill's grave.*

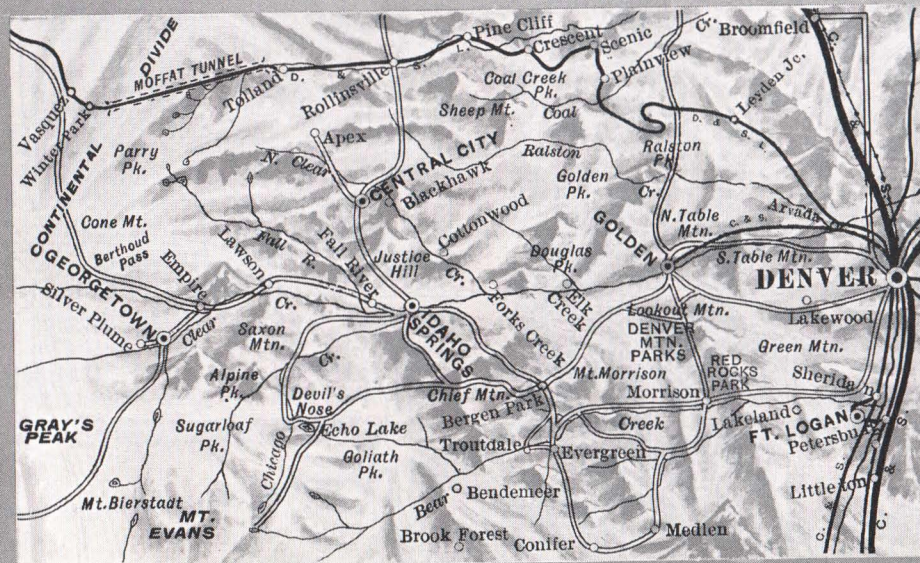
this conception more justified than where the river runs through Gore Canyon. Mile after mile of rugged, colorful and well-nigh overpowering grandeur make this one of the greatest of chasms. The river roars white and foaming between dizzy granite precipices which tower aloft 2000 feet, for here the Rockies reveal themselves at their mightiest.

This is the stupendous Moffat Tunnel Route which has given the Burlington a direct route through Colorado to California . . . an important link in its through train service to the Pacific Coast. For 232 miles westward from Denver it penetrates the heart of the Colorado Rockies through a wilderness region which until recent years

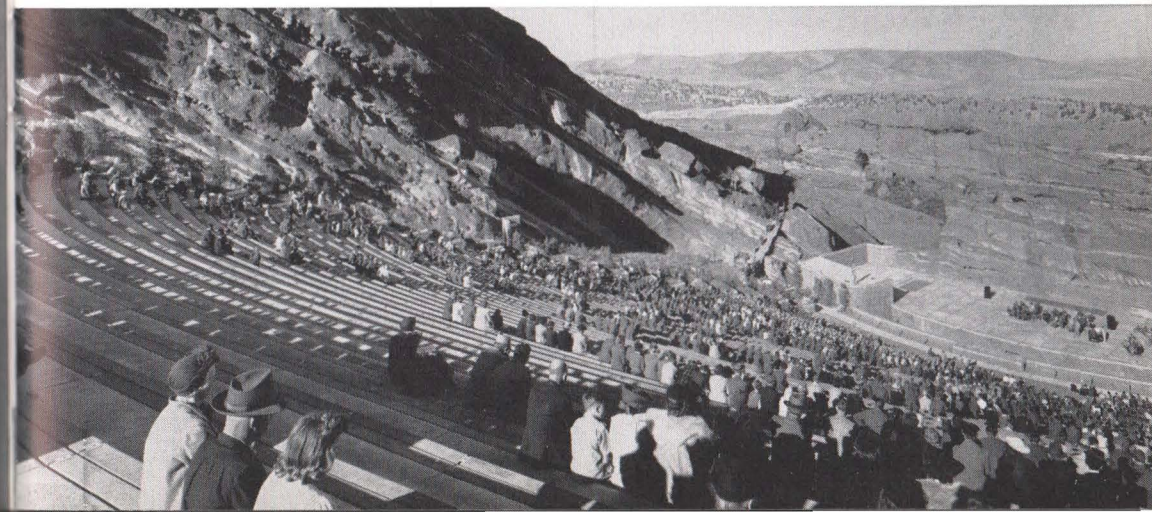
was known only to hunter, trapper and miner. It pierces snow-capped James Peak with the 6-mile Moffat Tunnel, nearly a mile below the crest; threads the grim walls of Gore Canyon, and spans the turbulent waters of the Colorado River in the heart of Red Canyon on the Dotsero Cutoff.

Construction of the Moffat Tunnel Road, in the face of crushing odds and in spite of the almost unheard-of ruggedness of the terrain, stands as a truly remarkable engineering achievement. A trip over this western route reveals a thrilling cross-section of Colorado's Alpine grandeur, from the golden gulches of placer mining days to the high, desolate places where the snows of winter never melt.

*Map of Denver and Vicinity.*



*Red Rocks Amphitheater—near Denver Colorado.*





# Mountain Wonderland

## ROCKY MOUNTAIN NATIONAL PARK... ESTES PARK

Draw a line from Denver . . . 60 miles due northwest, or 75 by broad smooth highways. There you will find Rocky Mountain National Park, a pleasant, a thrilling, indeed a perfect vacationland.

It is a land of incomparable paradoxes, of contrasts that stir the mind to awe and wonder at Nature's miracles. Tumbling mountain streams fade into dream-like still lakes where every twig is mirrored with glassy perfection. Alpine flowers thrive at arm's

length from mighty glaciers and barren rock masses. Bitter winds whistle over the peaks, while the quaking aspen shiver gently in the warm valleys. Anything grows in the valleys . . . but above timberline, life is a constant grim struggle with the elements.

### Famous Tribute

Since the early Seventies, the most renowned of the world's lovers of the high places have paid tribute to Rocky Mountain National Park. They know

it as a painter's paradise, bold, warm, colorful. Bierstadt, the great landscape artist, much of whose best work was done in the Park over sixty years ago, said that in this region were to be seen America's finest compositions for the brush. Similar tribute was paid by the English sportsman, Lord Dunraven, who visited Colorado in the Seventies and erected a hunting lodge. Since the day of Dunraven . . . and he was the Sir Thomas Lipton of his time . . . a beaten path has been trod to this great outdoor playground.

There are no poisonous plants, no harmful insects, no reptiles in the Park. In fact, there is nothing that runs, walks, crawls, growls or flies to cause man, woman or child a moment's uneasiness. Even the water tests 99 per cent pure. Strange as it may seem, the wildest creature is *man*, and all the wild life flees before him.

The National Park Service patrols the park region with well-informed and courteous rangers who are always willing to help. Ranger headquarters are maintained in Estes Park village. A system of signs and markers, trails, roads, telephones and other safeguards enables all to enjoy the country to the fullest, in safety and comfort. If ever one is lost, the wisest thing is the easiest thing . . . just *walk downhill!*

Like the Engadine of Switzerland, Estes Park is an upland basin or bowl,

7500 feet above sea level. (A "park," in Colorado, designates a mountain meadow or valley.) Rocky Mountain National Park surrounds Estes Park on three sides, extending some 15 miles north and south and 20 miles westward. Through the heart of this vast area runs a splendidly representative stretch of the great Front Range of the Rockies . . . a segment of the Continental Divide, thickly timbered by the Roosevelt, Arapahoe and Routt National Forests.

### The Front Range

The Front Range is characterized by narrow gorges and broad open parks surrounded by towering snow-capped heights which rise abruptly from the valleys. Down the eastern slope, water drains into the Mississippi and Atlantic Gulf. The western slope forms the headwaters of the Colorado River, which finds its tortuous way through the Grand Canyon of Arizona to the Pacific Ocean.

The special, inimitable charm of the Park is its adaptability to anyone's conception of ideal outdoor vacationing, and its amazing accessibility. Be it wilderness life, days of luxurious ease or strenuous sport. . . whatever your desire, satisfaction awaits you.

Page 14

Map of Rocky Mountain National Park.



Page 15

Granite walls line the famed Big Thompson Canyon, northern entrance to Rocky Mountain National Park.

A happy riding party, starting out for a glorious day in the unfenced wilderness of the Colorado Rockies.







*Stately Long's Peak is mirrored on the placid surface of Bear Lake.*

### *Perfect Climate*

The climate is light, very dry, and wonderfully stimulating. In spite of the altitude—7500 to 14,255 feet—the sunshine is warm and almost constant throughout the summer. Nights are cool, blankets are always welcome, and sound sleep is the rule.

The official summer season in Rocky Mountain National Park is June 15 to September 20, when hotels are open and daily transportation is available. Actually, the park is accessible all year and desirable accommodations are available the year 'round.

### *Sports Galore*

What can one do in Rocky Mountain Park? You can hike, ride, motor, climb mountains, fish, camera hunt, swim, play tennis or golf . . . in fact, just about anything you like to do in summer. Horseback riding is probably

the most popular sport, because it is so easy and safe for even the most timid of tyros, and because one can ride almost anywhere. Some, however, prefer to hike and climb the days away, gaining new health and vigor from the keen tang of pine-laden air, the feel of the good earth beneath their feet. Eventually, leisurely, they may find their way to a summit or two, yet wisely do not make such an attainment an end in itself.

Another sturdier breed shuns the lower levels as a matter of choice and reaches always for the heights and few are the peaks that have not yielded their summits to this courageous clan who stalk the eagle to his eerie lair and revel in the bite of the wind as it sweeps the mountain passes.

### *Wilderness Students*

The geologist is in his glory in the

Park, for glacial records are amazingly legible. Almost anywhere, one can study fascinating glacial forms . . . V-shaped valleys, cirques, lakes and moraines. Here, in some terrific upheaval of the past, a mountain was made. This tree-choked chasm, this trail of huge boulders, that sheer wall of granite—all are indelible records left by some mighty glacier.

For the botanist, the Park is a vast wild garden, profuse with color from early June to October. The Park's amazing floral album includes over a thousand species . . . fringed blue and other gentians, numerous columbines, martensia, phlox, primrose, Mariposa lilies, larkspur, Indian paint brush, lupin, and the Alpine buttercup that pushes up through the melting snowdrifts.

The thick, towering growths of evergreen trees are a revelation. Most characteristic are the Ponderosa and lodgepole pines, Douglas fir and blue spruce in the lower valleys; nearer timberline,

birch, Engelmann spruce and Alpine fir. Other familiar trees are the lovely quaking aspen, Rocky Mountain maple, alder, and Arctic willow.

### *Great Trout Fishing*

Ardent fishermen have long since discovered that some of the finest mountain streams in the West flow in or near the Park, stocked annually with millions of trout from local fish hatcheries.

Besides all this, everyone of course indulges the universal "sport" of loafing . . . taking one's blissful ease on some sunny veranda, under the whispering pines, or along a merry mountain brook. Just to relax and rest in utter peace, soaking in the sunshine and glorious ozone at every pore, gives one a new lease on life. And who shall say that that is not the best way to enjoy the mountains, after all?

### *Estes Park Village*

Estes Park village is picturesquely situated at the confluence of the Big

Page 17

*Hidden Valley and the snow-clad Mummy Range, in Rocky Mountain National Park, popular ski area during the winter season.*







*No vacation experience can compare with a ride to a mountain summit to witness the breath-taking beauty of a Colorado sunset.*

Thompson and Fall Rivers. A few minutes drive to the East is Lake Estes. Here will be found excellent fishing and complete facilities for all types of water sports. The village is well prepared for summer visitors, with excellent stores, garages, swimming pool, golf courses, moving picture theater, school, Protestant and Catholic churches, etc. A new half-mile long sky-lift cable car lifts passengers 1,050 feet from the village of Estes Park to the top of Mt. Prospect.

Several score first-class hotels, resorts and lodges are scattered in and around the Park. Horseshoe Park, seven miles west of Estes Park village, is a large, forest-edged valley of flowered meadows and rippling streams. Fall River and Fall River Road flank it on the north, Trail Ridge Road on the south . . . both converging to cross the Divide at 12,183 feet above sea level. North of this park along Roaring River is the wild, wonderful vicinity of Ypsilon and Lawn Lakes, Ypsilon Peak, Hagues Peak, Mummy Mountain and Hallett and Rowe Glaciers.

#### *Peaceful Upland Valleys*

Five miles west of the village is glacier-carved Moraine Park. From

here delightfully popular trails mount to Fern and Odessa Lakes. Beyond lies the tumbled vastness of the main Front Range.

Bartholf Park, two miles south of Moraine, is traversed by Bear Lake Road along sparkling Glacier Creek. Bear Lake is the starting point of trails into the great Wild Gardens . . . to mirror-like Dream Lake, Emerald Lake, Tyndall Glacier and Loch Vale. The Wild Gardens region is one of the loveliest scenic areas of the Park. Between its steep granite ramparts, fantastically shaped, lovely cascades somersault down to rich forests below, and wild flowers dot the upland glades in a riot of color. From Andrews Glacier and from Taylor Glacier, melting snows thread their way through romantic, cliff-cradled Loch Vale and The Loch, unequaled for sheer rocky wildness and beauty. At the head of the vale, walls of rock rise precipitously 3000 feet above icy, sky-blue lakes, and flowers grow profusely in the mossy soil.

To the east lies Glacier Gorge, bounded by McHenry's Peak, Thatchtop, Long's Peak and the great Divide.

A good trail enters this noble gorge; it is indescribably wild, yet well worth the effort of exploration.

#### *The Long's Peak Trip*

Long's Peak, most famous of all the heights of Rocky Mountain National Park, rises 14,255 feet above sea level, its snow-clad head towering more than 5000 feet above the valley floor. The trip to the summit is one of the most breath-taking of experiences. Guides are desirable, if not necessary, in order to properly ascend the rugged mountain-sides. It is cold up there on the rim of the world . . . but the pygmy world lies below you, and you are its conqueror!

Two trails ascend Long's Peak, one from Bear Lake, the other up Battle Mountain. Horses are used only as far as Boulder Field, after which one climbs the rest of the way on foot, up past the curious Keyhole and the Narrows, to the actual thrilling summit.

The Wild Basin lies south of Long's Peak, eastward from the Continental Divide. In this superbly beautiful area are lakes and waterfalls, wild gorges and many rocky peaks, frequently 13,000 feet high. It is a marvelous

camping and hiking ground, beloved by many a true lover of Nature.

#### *Park Wild Life*

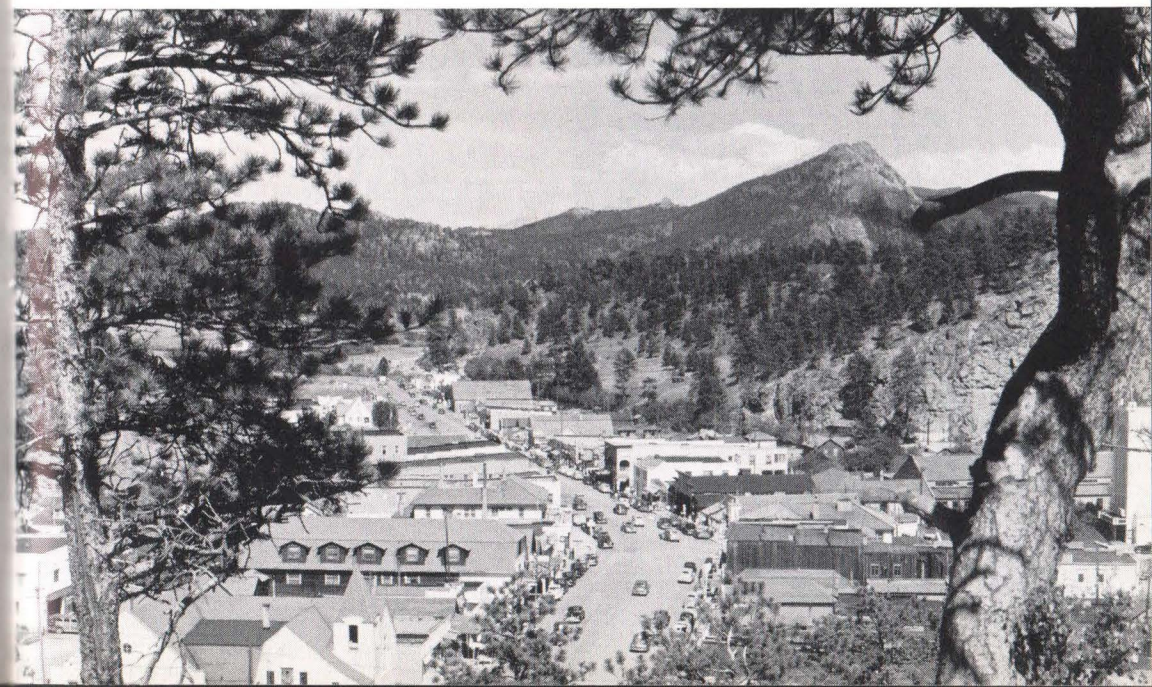
The Park is a natural home for bear, deer, Rocky Mountain sheep, beaver and other wild animals. Bighorn sheep may occasionally be seen on Specimen Mountain during the summer. Beaver are rapidly increasing, and their dams may be found along many a stream where the quaking aspen grow. Deer are a common sight, and elk also are no rarity.

There are more than a hundred species of birds, among them the blue-bird, hermit thrush, white-crowned sparrow, and that marvelous singer, the solitaire. The Rocky Mountain jay, chickadee, woodpecker, magpie, and the most curious bird in the Rockies, the water ouzel, are all-year dwellers. Above timberline one also finds the ptarmigan and the rosy finch.

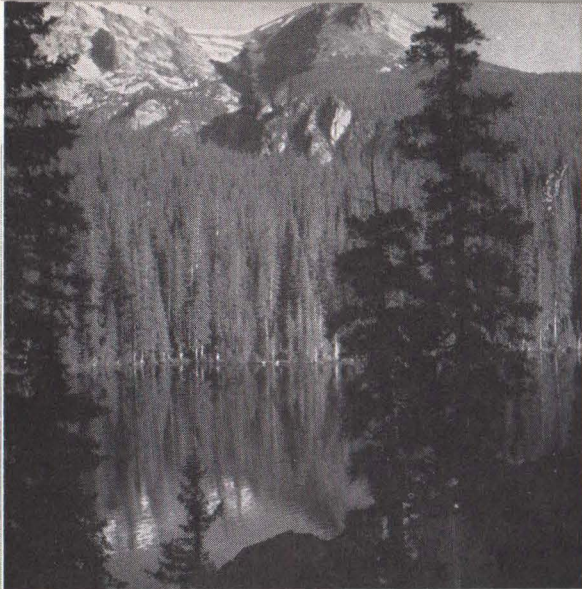
Timberline lies at about 11,000 feet in Rocky Mountain National Park . . . a wild, weird region ruled by Nature's inexorable law, "survival of the fittest." Here stately spruces creep like vines, their trunks twisted and bent as

Page 19

*Estes Park village, headquarters for Rocky Mountain National Park.*







Stone Mountain reflected in the quiet, pine-bordered waters of Fern Lake.

Rock Portals on the Trail Ridge Road, with Long's Peak towering in the distance.



they struggle through the rocks. Higher up these give way to scraggly growths, and finally to tough grass, hardy mosses and tiny Alpine flowers.

At even the highest altitudes, bright flowers grow in sheltered gorges, and the beautiful columbine, Colorado's state flower, is found in the lee of snowbanks and glaciers. Above rise the bare mountain masses of the far-flung Rockies. Thunderstorms gather swiftly on their sides . . . thrilling, awe-inspiring, but soon dissipated by the warm bright sun.

### Grand Lake Region

The western gateway to Rocky Mountain National Park is Grand Lake village, on the shore of Grand Lake and connected with Estes Park by a splendid motor road across the Divide. Some two miles long and a mile wide, the lake lies a mile and a half above sea level. Here the Grand Lake Yacht Club has the highest yacht anchorage in the world and annually holds a midsummer Lipton Cup regatta. Grand Lake is one of the largest bodies of water in the state, and many trails lead into the mountains rising from the shore line.



### Round Trip Fares

Round-trip tickets to Estes Park, Colorado are on sale during the summer months at all railroad ticket offices in the United States, the fare to the Park being \$8.00 higher than the fare to Denver. Such tickets include rail transportation to Denver and return, also motor transportation between Denver and Estes Park village.

Tickets to points west of Denver, when routed via Denver or the other Park gateways, permit stopovers for the short side trip to Rocky Mountain National Park—allowing as long a stay as one desires within the final return limit of rail ticket.

### How to Reach the Park

Excellent motor service to and through Estes Park is provided by the Rocky Mountain Motor Co., from Denver, Boulder, Longmont, Loveland or Ft. Collins. Modern, high-powered motor buses operate on regular schedules throughout the summer, over several scenic routes. The Big Thompson Canyon route, via Loveland, traverses the celebrated Box Canyon in the Roosevelt National Forest, towering hundreds of feet on either side of the winding Big Thompson River. Twisting and turning as it climbs the gorgeous canyon, the road suddenly emerges into the northeast section of Estes Park.

The North St. Vrain route includes Boulder and Lyons, then continues northward over the beautiful North St. Vrain Canyon Road, reaching Estes Park from the South.

The South St. Vrain route via Boulder or Longmont negotiates the entire length of the canyon of South St. Vrain Creek from Lyons to Allen's Park, where the road turns north along the mighty fringe of Rocky Mountain National Park and through Roosevelt National Forest to reach Estes Park from the south, over the famous Peak-to-Peak Highway.

### Motor Bus Schedules

#### VIA BIG THOMPSON CANYON

Read Down		Read Up
9:15 AM	Lv. Denver (Un. St.)	Ar. 5:45 PM
10:20 AM	Lv. Longmont	Lv. 5:00 PM
10:55 AM	Lv. Loveland	Lv. 4:30 PM
12:10 PM	Ar. Estes Park	Lv. 3:15 PM

(Northbound June 15 thru Sept. 15; Southbound June 1 thru Sept. 30)

#### VIA SOUTH ST. VRAIN CANYON

Read Down		Read Up
#3:00PM	*9:15AM Lv. Denver(Un. St.)	Ar. 11:25AM
3:45PM	10:05AM Lv. Boulder	Lv. 10:40AM
4:15PM	10:35AM Lv. Lyons	Lv. 10:10AM
6:00PM	12:20 PM Ar. Estes Park	Lv. *8:30AM

\*(Northbound June 1 thru Sept. 30; Southbound June 15 thru Sept. 15)

#(June 15 thru Sept. 15)

#### VIA NORTH ST. VRAIN CANYON

Read Down		Read Up
7:00 PM	Lv. Denver (Un. Bus St.)	Ar. 3:00 PM
*7:10 PM	Lv. Denver (Un. St.)	Ar. 2:45 PM
7:45 PM	Lv. Boulder	Lv. 2:00 PM
	Lv. Lyons	Lv. 1:30 PM
9:00 PM	Ar. Estes Park	Lv. 12:45 PM

(June 15 thru August 31)

\*(When notified in advance)

In addition to these motor routes, a fourth route known as the "Grand Lake Circle Tour" enters Estes Park via Big Thompson Canyon, crosses the Continental Divide to Grand Lake via the world-famous Trail Ridge Road, and returns to Denver on a great circle via Berthoud Pass and Idaho Springs . . . connecting with the Burlington's Vista-Dome "Denver Zephyr" for the East, or the "Texas Zephyr" to Ft. Worth, Dallas and Houston. For rates, consult your local ticket agent.

### 240-MILE GRAND LAKE CIRCLE TOUR

Mls.	(June 15-Sept. 15)	Schedule
0	Lv. Denver (Union Station)	9:15AM 1st day
83	Ar. Estes Park (lunch)	12:20PM 1st day
83	Lv. Estes Park	2:00PM 1st day
132	Ar. Grand Lake (overnight)	5:30PM 1st day
132	Lv. Grand Lake	8:15AM 2nd day
203	Ar. Idaho Springs	10:50AM 2nd day
238	Ar. Denver (Union Station)	11:50AM 2nd day

Grand Lake—on the western slope of the Continental Divide—highest yacht anchorage in the world.





# Gateway to the Glaciers

## BOULDER · GLACIER REGION

Twenty-nine miles northwest of Denver lies Boulder, key city to the great glacier region in the Roosevelt National Forest south of Rocky Mountain National Park, and eminent among Colorado's alluring resort cities. This beauty spot at the mouth of lovely Boulder Canyon is the seat of the State University, the Colorado Sanitarium, the noted Blue Bird enterprise, and (in July and August) the famed Colorado Chautauqua.

This mountain-locked city at the foot of the Arapahoe Peaks has 6000 acres of mountain park and is the entry to a perfect labyrinth of all that makes a vacation in the mountains worth while. Close at hand are rugged ranges, glacial lakes and streams, hundreds of square miles of virgin forest, a wonderland of canyons, plunging cataracts, lakes and frowning crags. A network of motor roads traverses the entire region, making it easy to reach seemingly inaccessible heights and scores of attractive alpine resorts.

There are many such charming havens of rest, inviting one and all to spend a week, a month, or all summer in a cool green forest-and-mountain world. Crisp nights and long deep slumber combine with sunny days in the open air to provide a remedy for any ailment, mental or physical. One can stroll through meadow and flowers; penetrate the endless forest on horseback, up to majestic heights; and continue on foot up among the embattled peaks to where the eternal glaciers "grow."

Here are the famous Colorado Glaciers, greatest in the state . . . gigantic, living, moving ice fields high up under the foreboding crags that straddle the Continental Divide—12,000, 13,000, 14,000 feet above sea level. These mysterious phenomena, among the most fascinating in Nature, are up in regions of perpetual snow and are the source of countless streams that tumble to the valleys far below, forming sparkling lakes on the way and

eventually finding a path to the sea.

These living glaciers . . . Arapahoe, St. Vrain, Isabel and Fair . . . are the most accessible in the world. To study them from close at hand is an unforgettable experience, giving one a deeper insight into the mighty scheme of the universe. On every hand, there are scenes to stagger the imagination . . . enormous cirques, great rock moraines, pressure folds, yawning crevasses, visible ice strains, and perhaps strangest of all, "red snow."

St. Vrain Glacier, lying on the very ridgepole of America at 12,500 feet, is 500 feet thick and nearly two miles long. Fair Glacier, still higher up, clings almost vertically to the great Divide above the forbidding Hell Hole. Arapahoe, perhaps the best known, is the largest living glacier in the Colorado Rockies.

Boulder has the distinction of being the only city in the United States, if not in the world, that owns its own glacier—Arapahoe, source of the city's water supply. Its purchase by Boulder was authorized in 1919 by a special

Act of Congress to insure for the city a constant, pure supply of water direct from the glacial snow and ice. Arapahoe Glacier is nearly a mile square and from 100 to 500 feet thick.

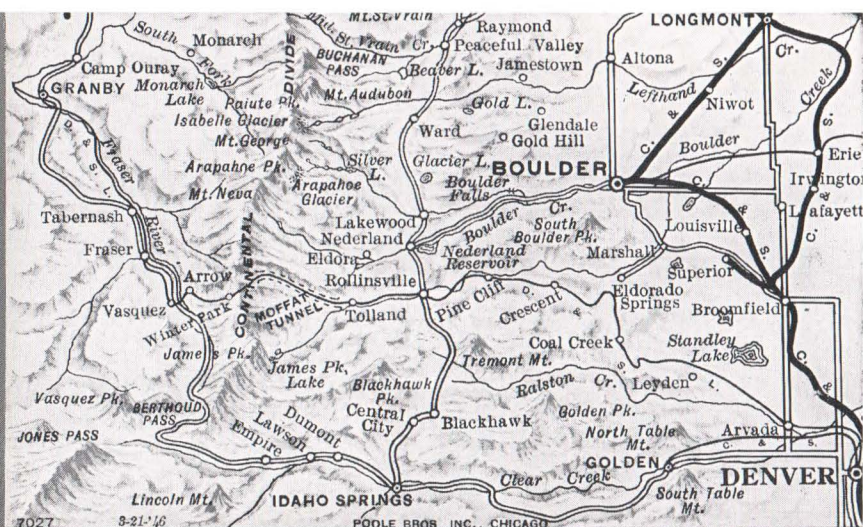
The University of Colorado has erected a "Science Lodge" only a few miles from this great ice field, whose study is included in geological and botanical courses conducted during the regular Summer School.

Another feature of the university's summer sessions is the summer Writers' Conference, held annually since 1930 under auspices of the university. Its purpose is to stimulate creative writing in an inspirational atmosphere under leadership of many famous authors.

Just a short distance from Boulder are a number of Colorado's old "ghost" towns which figured so vividly in early gold mining activities. Central City, Black Hawk, Nevadaville . . . these were names to conjure with, back in the roaring '60's, when fabulous stories of rich "strikes" brought forth a wave of gold-mad humanity

Page 23

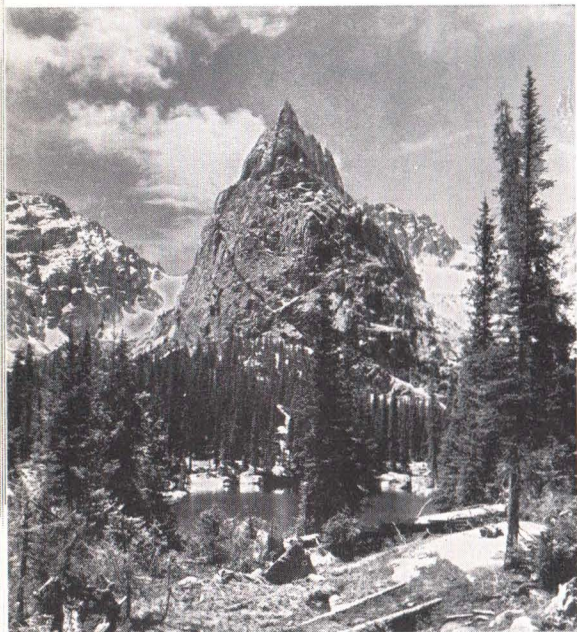
*Mountain-edged Boulder, "gateway to the glaciers."*



*Map of the Boulder-Glacier Region.*

Page 22





*The lofty spire of Lindbergh Peak, a prominent point in the Colorado Rockies.*

who sought fame and fortune with pick and shovel, gold pan and sluice box.

They swarmed the gulches, valleys and streams, scarred the surrounding mountains, and lived lustily amid the

frenzied gaiety of the famous "boom" towns of the day. From the rich ore veins all about a golden flood poured forth, and Central City, with its twin city, Black Hawk, was the center of it all. By 1874, however, the amazing streams of gold had begun to peter out, leaving in their wake deserted cities of memories . . . lonely, virtually lifeless "ghost" towns.

One of the few buildings left intact in Central City was the Grand Opera House, where Booth, Bernhardt, Patti, Salvini, Joseph Jefferson and other stage immortals once played. Turned over to the University of Denver as an unusual historic museum, the old Opera House was never reopened until 1932, when the Annual Play Festival was inaugurated to commemorate glories of bygone days. This unique event, usually held in July and featuring the finest actors and actresses of today, brings back the glamour of those forgotten times and attracts visitors from all over the country.

Boulder the "gateway to the glaciers," is a destination for round-trip tickets routed via the Burlington to Denver, thence Colorado & Southern Ry. Tickets so routed will be honored, if desired, on motor buses of the Denver-Boulder Bus Co., between the two cities.

*The vast expanse of Arapahoe Glacier, the only city-owned glacier in the world.*



## *Where plain and mountain meet*

### **COLORADO SPRINGS and THE PIKE'S PEAK REGION**

Colorado Springs is more than an important gateway to the Colorado vacation regions . . . it is a vacation region in itself. Matchless climate, predominantly sunlit days and a great wealth of outdoor attractions within a short distance of this city "where plain and mountain meet," account for its enviable position in the front ranks of famous resort sections in the Western mountainlands.

The summer season is exceptionally long at this unique city on the fringe of the broken Rampart Range of the Rockies, 75 miles due south of Denver on the Burlington-Colorado & Southern Lines. Lying at an altitude of approximately 6000 feet, it is always cool in the shade, always warm in the sun, and outdoor life for visitor or resident is delightful practically every day in the year.

So close is Colorado Springs to a multitude of superlative vacation places, that one can enjoy — almost anywhere — the delightful combination of life in the heart of the mountains with all the conveniences of a modern city close at hand. Just 15 minutes by automobile and you are right among the peaks . . . in the midst of the famous Pikes Peak region. No similar area of its size on the globe contains so many glorious vistas of peaks, valleys and tumbling water, picturesque camping places, and countless other scenic wonders . . . dominated at all times by Pikes Peak, the "patriarch of the Rockies."

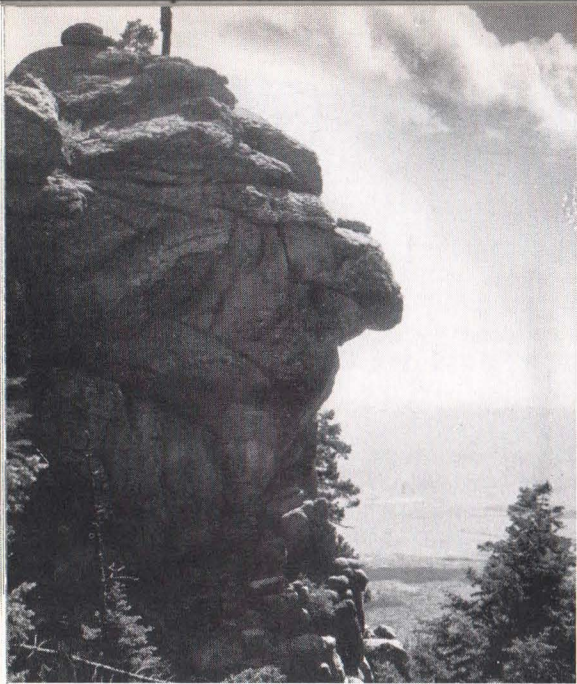
Pikes Peak! There is a name that stirs the imagination. It overshadows the entire vicinity with its mighty magnificence, and has been seen and ascended by more people than perhaps

Page 25

*Pikes Peak as seen through the Gateway to the Garden of the Gods.*



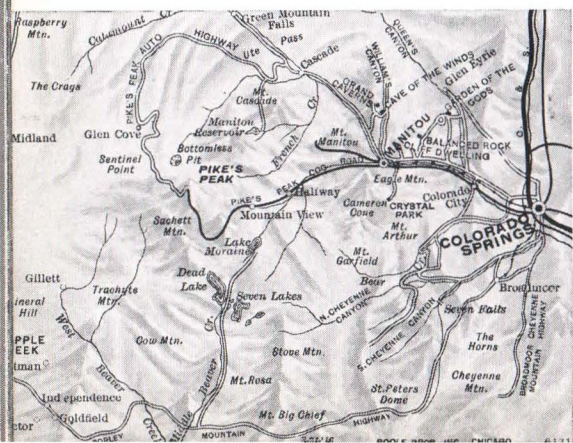




"The end of the road" . . . at the summit of the Broadmoor-Cheyenne Mountain Highway.

any other mountain in America. Discovered in 1806 by Lt. Zebulon M. Pike (who incidentally, appalled by its height, said it would never be scaled), for many years it was the snow-capped beacon for the westbound covered wagon trains. Far from being Colorado's highest summit (30 others surpass its 14,110 foot altitude), Pikes Peak still stands alone as a glorious symbol of the Great West. It is, indeed, synonymous with the best of the high places in the Colorado Rockies, one of the most illustrious "highlights" of the West.

Today Pike would be amazed if he  
Page 26



could see how many thousands of visitors reach this lofty summit every year. All summer, they ascend in a constant stream . . . over a wonderfully scenic auto highway; via cog railway; on horse, and even (hardy souls) on foot. Few attempt to hike it, except for the famous Ad-A-Man Club of Colorado Springs, whose members climb the peak every New Year's Eve to initiate one new member annually and celebrate the new year with fireworks.

While not a metropolitan city (75,000 people), Colorado Springs is admirably endowed for the role of host to vacationing thousands. Its fine modern hotels, wonderful system of parks, numerous excellent highways and splendid rail service, dovetail with any recreation plan. Trails abound, piercing canyons, forest, park and quiet glen, ascending ridges and mesas, following foaming streams and cascades, up to the jagged mountain crests. And all this within a radius of some twenty miles, almost every section of which is amazingly accessible.

Besides the breath-taking Pikes Peak highway, many other world famous motor roads serve the region. There is the spectacular new Broadmoor-Cheyenne Mountain Highway, zigzagging up a 9500 foot mountain that rises abruptly from the plain. The Corley Mountain Highway, built over the road bed of the old Cripple Creek Short Line, is a thrilling route, through tunnels, over trestles, along forested canyons and circling towering peaks, to Cripple Creek's gold camps.

Especially popular is the road through the gigantic Pillars of Hercules that stand guard before the granite walls of South Cheyenne Canyon where the Seven Falls spill down a steep precipice. In the lovely canyon above the falls is the grave of Helen Hunt Jackson.

Just north of Colorado Springs is the new United States Air Force

Map of the Colorado Springs-Pikes Peak region.

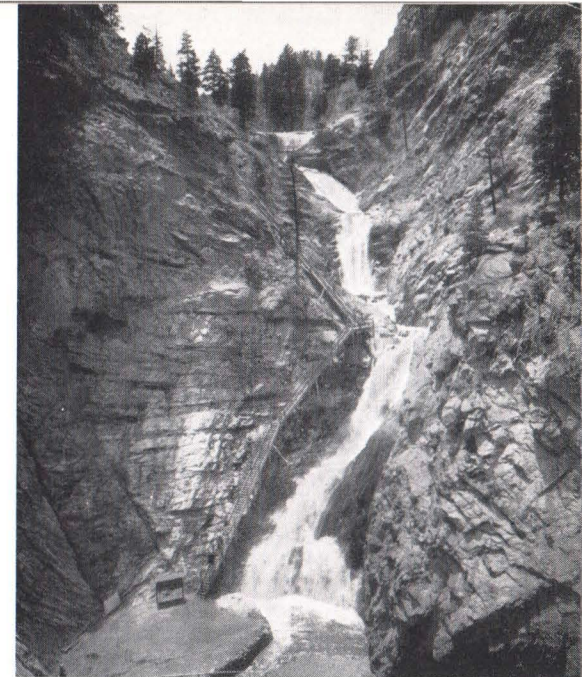
Academy. Covering an area of approximately 17,500 acres, the Academy possesses all of the features of a major educational institution, in addition to an air field, and other facilities necessary to train cadets in airmanship. Seven hundred and twelve cadets enter the Academy each year. Graduates receive a Bachelor of Science degree, a rating as a navigator, and a commission as a second lieutenant in the regular Air Force.

Manitou, just six miles west of Colorado Springs, is famous for its mineral waters, fine baths and surrounding scenery. The city lies in a cleft of the mountains at an altitude of 6335 feet, overshadowed by Mt. Manitou at its very edge. Legend has it that hostile Indian tribes "buried the hatchet" when they came here to bathe in the healing waters of the mineral springs. There are some 15 medicinal springs within the city limits, visited by thousands every year.

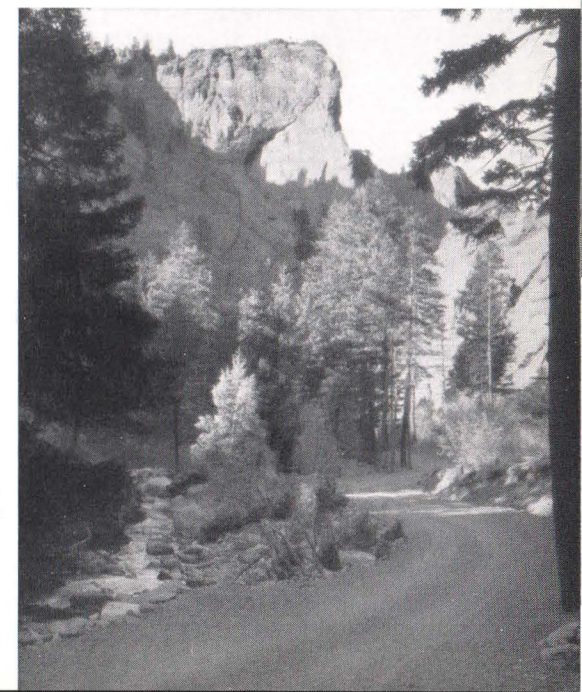
Just a few miles distant are numerous beauty spots of the Pikes Peak region. In a short time one can visit Garden of the Gods, Williams Canyon and Cave of the Winds, Rainbow Falls, Phantom Cliff Canyon and ancient cliff dwellings; ascend Mt. Manitou by cable railway; or motor over historic Ute Pass, once trod by Indians bound for their summer hunting grounds. Many delightful resorts are in the pass, including Cascade, Chipita Falls, Green Mountain Falls and Florissant.

Only twenty miles southwest of Colorado Springs is the fabulous Cripple Creek district, whose gold mines have yielded great fortunes in the yellow metal. Even today, considerable ore is mined in the Cripple Creek and Victor districts—rich rewards of gold bullion being made possible by modern and efficient mining methods.

A lovely vista on the highway that leads into North Cheyenne Canyon.

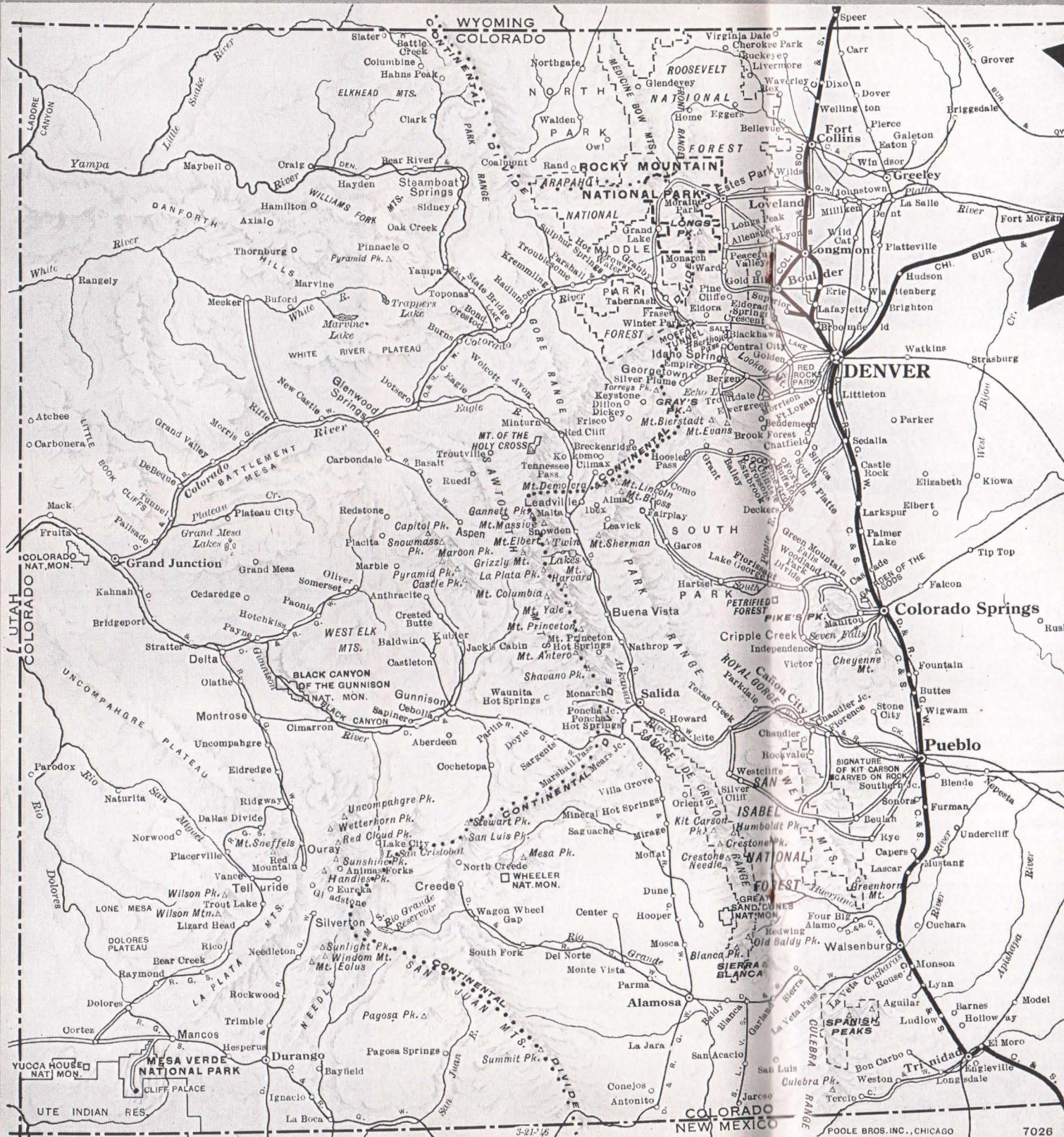


Seven Falls—South Cheyenne Canyon.





# MAP OF THE *Colorado* VACATION REGIONS



SERVED BY THE

**Burlington  
Route**





*Marble Mountain in the lovely expanse of San Isabel National Forest.*

## *Pueblo and Royal Gorge*

Pueblo, third of Colorado's great gateways for visitors from the east, is situated on the Arkansas River at the foot of the Rockies, 45 miles south of Colorado Springs. Second largest city in the state, it earns its title of "The Pittsburgh of the West" by reason of its being the center of the West's smelting and steel industries.

Pueblo is a modern city, with a population of over 103,000, good hotels, several hundred acres of mountain parks, and large mineral spring baths in the center of the city. It is the main starting point for excursions to such renowned playgrounds and scenic wonders as San Isabel National Forest, Canon City and Royal Gorge, the Sangre de Cristo and Spanish Peaks, and Great Sand Dunes National Monument, as well as Mesa Verde and other wonderful regions in Western Colorado.

Less than 35 miles from Pueblo are

two fine resort sections close to the mountains—Beulah and Rye. The former lies in a lovely fertile valley with mineral springs, forested canyons, and many shady drives and mountain trails. Rye is a charming village on the Greenhorn River, surrounded by magnificent scenery. Some of the finest fishing in the state is in this section.

Only 30 miles west of Pueblo is Canon City, the center of a splendid variety of mineral springs noted for their healing qualities, including a mammoth swimming pool. Close by is the famous Royal Gorge.

The Royal Gorge, a superb masterpiece of Nature, represents one of the boldest, thrilling epics in Western rail history. Imagine a stupendous canyon over 1,000 feet deep, ten miles long and, for the most part, so narrow that one can toss a stone from wall to wall. Through this mighty crevasse races its restless maker, the Arkansas River.

At the bottom of the canyon is the "Royal Gorge" line of the Rio Grande between Denver and Salt Lake City. Construction of the granite-bound steel highway through the canyon is one of the world's great railroad engineering marvels. At one point, where the gorge is only 30 feet across, the tracks run over the famous Hanging Bridge, suspended parallel with the rushing river by immense steel supports set in the solid rock walls.

From Canon City one can motor out over a breath-taking Suspension Bridge that swings across the gorge 1,056 feet above the river. This colossal structure is 880 feet long and over twice the height of any other suspension bridge in the world. From its eerie height there is a superb view of the Rockies, as well as of the gorge itself, where seemingly toy trains wind their way between precipitous walls.

### *San Isabel National Forest*

Facilities for vacation enjoyment are unsurpassed amid the half million acres of the great San Isabel National Forest. Through the eastern section of this beautiful area run the Wet Mountains, while the enormous Western section, paralleling the fertile San Luis Valley for nearly 150 miles, contains the glorious Sangre de Cristo Range and, close to the border line of New Mexico, the historic Spanish Peaks. In this mighty expanse are some of the highest peaks in all Colorado.

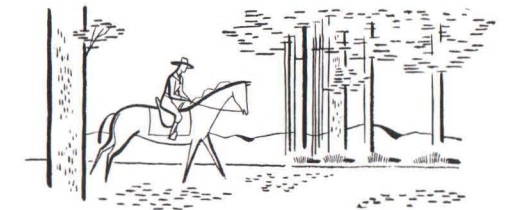
Here are unscaled heights, unexplored caves, bottomless pits, wilderness unparalleled, mirror-like lakes,

*The Beulah-Rye road in the heart of San Isabel National Forest.*



great canyons and hundreds of square miles of marvelous virgin forest. Trout streams abound, restocked yearly by federal and state fish hatcheries. There are over 700 miles of well-marked auto roads and countless winding trails, thus affording easy access to the region and to numerous inviting hotels, resorts and ranches on the fringe of the forest.

The greatest (and almost the only) restriction on anyone's freedom in San Isabel, as well as in all our national forests, is the insistence that camp fires be completely extinguished before they are abandoned, and that every precaution be taken against forest fires.



Page 31

*Tracks of the Rio Grande R. R. wind their way through the grim walls of the Royal Gorge, topped by a breath-taking highway bridge.*





# A Glorious Playground

## MESA VERDE AND WESTERN COLORADO



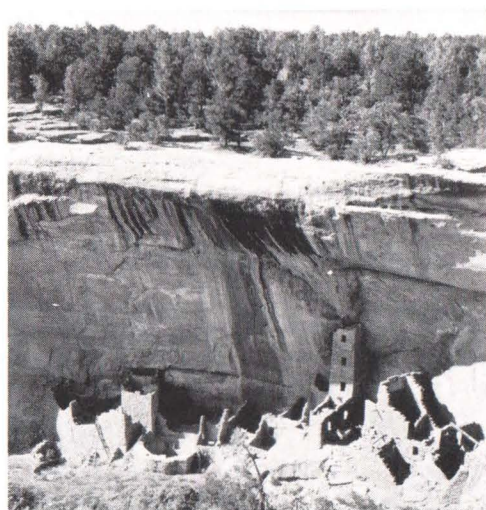
One of the strangest of Colorado's many scenic rarities is Mesa Verde National Park, where the most beautiful, impressive and best preserved of all American prehistoric ruins are located. The park, open May 15 to Oct. 15, includes some 50,000 acres of remarkable loveliness tucked away in the far Southwestern corner of the state, easily reached by motor roads and perpetuated for all time by the federal government.

Mesa Verde is a fascinating place, a veritable island of mystery and enchantment that challenges the imagination. Built into the sheer cliffs of some twenty-six wild canyons that gouge its surface are the amazing cliff dwellings of a long lost people. Who they were, whence they came, where they went and why . . . no one knows.

Here one may stand on the edge of the great Emerald Table 2000 feet above the floor of the great Montezuma Valley. Climb among the cliff houses, such as Spruce Tree House and the marvelous Cliff Palace. Explore rocky paths, secret passages, strange ceremonial chambers and well-formed streets that echoed to thousands of feet about the time Richard I was leading his Crusaders into the Holy Land.

In conjunction with Rio Grande railroad from Denver, Pueblo and Grand Junction, motor bus service is operated by the Continental Trailways to Mesa Verde from May 15 to October 15. The park trip may be purchased separately or as a side trip from any of these points, by being included in your rail ticket at time of purchase.

Mesa Verde, however, is only one of the many glorious attractions of



Reminders of an early and little-known race are these relics of the Mesa Verde cliff dwellers.

Western Colorado. Here is a gargantuan playground that has practically everything in the way of outdoor allurements. All is on a grand and glorious scale . . . all seems calculated to make Man realize the vastness of Nature's works, and to give him breadth and wisdom through overwhelming perspective.

There is marvelous fishing along such famous streams as the Gunnison River, the Rio Grande (the same Rio Grande that flows to Old Mexico), the San Miguel, Yampa and Colorado Rivers, and many well-stocked lakes. Lovers of the unusual will revel in the monstrous and grotesque geological phenomena of the Wheeler and Colorado National Monuments.

Mineral springs abound in many sections, with splendid facilities for enjoying them . . . as at luxurious Glenwood Springs, on the Colorado River, where a feature is a huge outdoor swimming pool of hot mineral water. Other popular radioactive springs are located at Pagosa, Ouray, Waunita, Salida, Leadville and Buena Vista.

Nearby is Aspen, year 'round resort where annually summer vacationists are privileged to enjoy musicals, lectures and round-table discussions of world affairs while enjoying the advantages of outdoor life in a mountain paradise.

The largest flat topped mountain in the world, rising a mile above the surrounding country, is in Western Colorado . . . renowned Grand Mesa, with some 360 trout-filled emerald lakes, grand views and boundless forests.

There is no lack of mountain grandeur, for all along the Continental Divide are such great ranges as the Rabbit Ear, Park, San Juan, La Platte, the Sawatch group, Cochetopa Hills, and the San Miguel Mountains. In the Sawatch group are the three highest peaks in the state . . . Mt. Elbert (14,431 feet), Mt. Massive (14,418 feet), and Mt. Harvard (14,420 feet). Close by is historic Leadville, the world's highest incorporated city.

Another scenic and recreational wonderland is the bountiful Grand Valley, where is found everything in the way of outdoor allurements. The modern city of Grand Junction is the center of this rich livestock, fruit, vegetable and mineral region, which plays host annually to thousands of visitors, who delight in the excellent climate, scenic surroundings, hospitality and friendly atmosphere.

Throughout this stupendous vacationland are hundreds of excellent places that cater to lovers of the great outdoors. They offer—according to location, altitude, accommodations and featured activities—a summer "bill of fare" that will appeal to anyone.

Trappers Lake, White River National Forest, a famous fishing spot.





# The land of boots 'n' saddles

## DUDE AND GUEST RANCHES



In many of the mountain lands of the West, one finds that typically (and solely) American institution, the Dude or Guest Ranch—and Colorado has a goodly quota of such fascinating places. Scattered through the mountain regions along the fringes of deep, primeval forests, or basking in the sun light streaming down upon many a grass-carpeted valley—ideal surroundings for an outdoors vacation—here the dude and guest ranch thrives.

These ranches are indigenous to no one part of the state. They can be found in general where the old stock men, the men who built the West, came upon good grazing and water lands. All, however, are alike in certain respects . . . all offer true Western hospitality, and a particularly enviable and enjoyable type of outdoor life.

Many are true ranches in the real Western meaning—operating ranches where cattle are raised, “worked” and marketed as a business, and where the guest may know the fascinating experience of riding the range with the “wranglers,” participating (in a mild way) in the day’s activities of cutting out, roping, roundups, branding, etc.

Other ranches cater more specifically to a strictly summer clientele, with

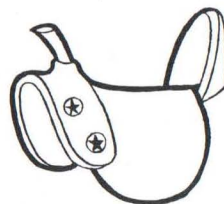
their personnel and activities directed toward the comfort, interest and stimulation of the vacationist. No matter which type of establishment appeals to you, there is inspiration for the weary and the mentally jaded in the soul-stirring solitudes, pure crystalline air and vigorous, healthy outdoor sport wherever you go.

A number of ranches now have swimming pools where you may take a refreshing early-morning or late evening dip . . . a good way to start or end a busy day in the saddle.

No “dress up” places are these dude ranches . . . you can dress as informally as you please. Extensive outfits are unnecessary, since you can purchase what you need on arrival in Colorado.

Here the Horse reigns supreme, for the dude ranch represents the world of boots, saddle leather and ten gallon hats. Here the cowboy is in his element and if you would make the most of your opportunities you will ride with him through a wilderness world that you might otherwise never see.

The average Colorado dude and guest ranch is not a large and spacious establishment as to accommodations and service. Their very compactness is one of their chief charms, for here you are more an individual than a



guest and the friendly portals of the Great West are opened for you as they would be in no other region of the country. Yes, a ranch vacation is a different vacation—one that offers something new and delightful from anything you may ever have known.

In selecting a ranch, it is suggested that prospective “dudes” should correspond personally with ranchers for more detailed information than it has been possible to include in the list shown on pages 41 to 44 of this book-

let. Reservations are made in advance so that arrangements can be made to have the ranch car meet one’s train.

Colorado dude ranch rates include lodging, meals, entertainment, guides for ordinary short trips, and in many cases the use and care of a private saddle horse also. As a rule, rates are materially reduced for the late Fall months during the hunting season, and during the months when winter sports are offered at ranches that are open all year.

Page 35



*A high spot in Colorado dude ranch life . . . saddling up in the corral before the daily ride.*



*A picnic out in the open, amid the scented pines . . . with the “wranglers” doing the chores.*

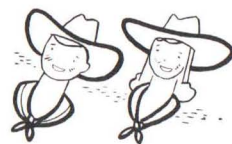
*Upland trails lead to vistas of grandeur 'mid Colorado's mountain peaks.*





# Summer Camps

FOR BOYS AND GIRLS



Colorado is famous for its great number and variety of summer camps for boys and girls, offering a wide range of accommodations, activities and charming locations. Some of these camps are quite small, with personal supervision stressed above all else and offering a truly delightful atmosphere of Western home hospitality. Some employ complete professional staffs of instructors and advisors, with extensive facilities for the training of youth from six to twenty-one years of age. Other camps are operated in conjunction with real cattle ranches, with the attendant thrills of "range riding," roping, round-ups and similar fascinating ranch lore.

Colorado's famous summer camps are not confined to any one locality or region . . . you will find them in many sections of the state, although always within sight and easy riding distance of the mountains. The majority are located in and around Rocky Mountain National Park on both sides of the Continental Divide, and in the Boulder-Glacier and the Colorado Springs-Pikes Peak districts, with a few in the western part of the state. While the camps vary considerably in their programs, range of outdoor activities and accommodations, all are alike in several outstanding respects.

These camps teach self-reliance under understanding leadership and enable the boy or girl to develop initiative, resourcefulness, love of natural beauty, and that spirit of comradeship and cooperation so essential to modern

social life. Above all, they offer wonderful opportunities for a grand vacation among Colorado's vast mountain grandeur. Indeed, no more splendid vacation could be imagined for a growing boy or girl than a summer at some well-supervised Colorado camp. Health, happiness and clean alert minds are the almost inevitable results, coming during the most formative years when they will do the most permanent good.



*Ride 'em Cowboy!  
What a thrill to  
see a real Western  
rodeo in action.*

Every day is a new and rapturous experience for the growing youngsters. Practically every camp maintains a string of thoroughly dependable riding horses, for riding is the almost-univer-



*The pause that refreshes . . . beside a cool mountain stream.*



*Hours in the open air do wonders for young appetites.*

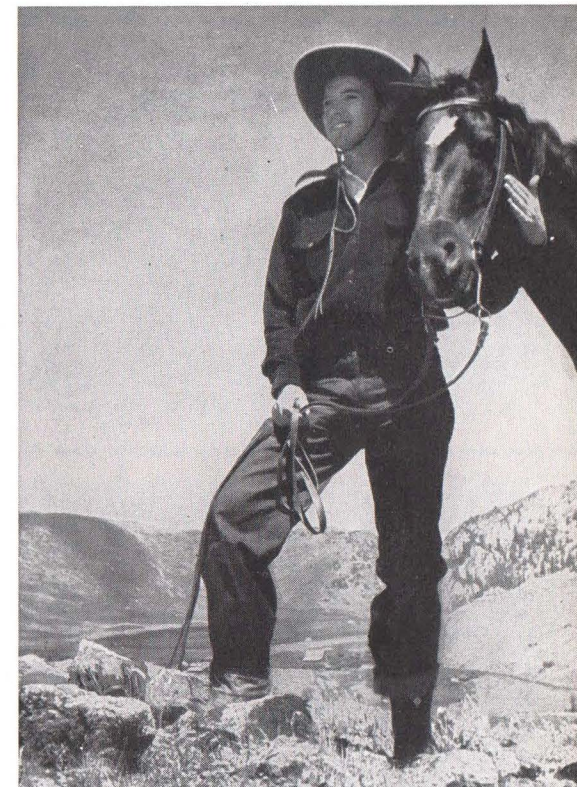
sal sport in Colorado. Horseback trips are daily occurrences, under careful instruction and constant supervision. Beginners have no difficulty in learning to ride in the free and easy Western style, once learned never forgotten.

Some camps feature a maximum of outdoor life, with overnight camping and pack trips and even short visits to real western rodeos nearby. A few camps for boys are located on real cattle ranches, where the boys enjoy the thrill of riding with the cowboys at their daily range tasks.

Boys and girls usually are segregated as to age so that desirable companionships may be formed. At some places, tutoring can be arranged throughout the summer, and personal supervision (while seldom necessary) can also be provided under capable, mature guidance. In general, however, the programs of activities are not dictated by strict, rigid methods of regulation but are calculated to develop the best in growing youths, while giving them the priceless advantages of life in the great outdoors.

Before selecting a camp where your boy or girl will spend all or part of the summer vacation period, references may be asked of any Colorado camp listed on pages 45-46 in this booklet, and freely investigated for your own satisfaction as to its complete reliability. Many establishments have non-resident representation in larger cities of the Midwest and East so that dependable information may be available all year 'round.

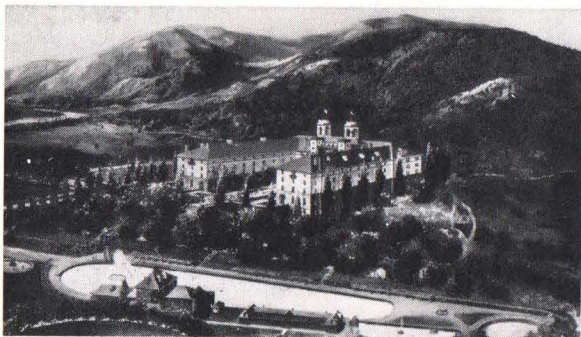
*A group of happy boys at a Colorado mountain camp.*



*Put your growing youngster in the place of this Colorado camper. Don't you think it would do him a world of good.*







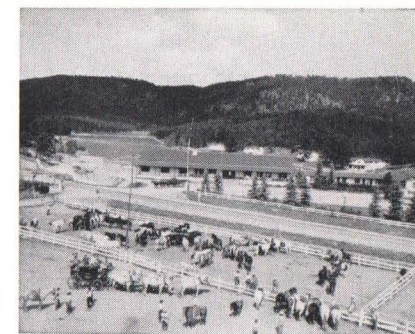
*The Colorado Hotel, Glenwood Springs*



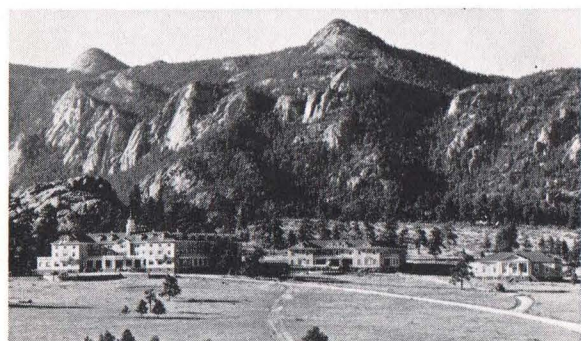
*Baldpate Inn—  
Rocky Mountain National Park.*



*The Broadmoor Hotel at Colorado Springs, one of  
the best known and most complete hotels in the West.*



*Paradise Ranch  
Woodland Park, Colorado*



*An outstanding hotel of the Rocky Mountain  
National Park region . . . The Stanley.*



*Grand Lake Lodge  
Grand Lake, Colorado*

## **TYPICAL SUMMER VACATION PLACES IN COLORADO**

The question of "where to go" in Colorado depends entirely on your taste in summer recreations. Throughout the state, you will find a host of hotels, lodges and cottage resorts catering solely to your pleasure and comfort. They range all the way from modest cabin camps, rustic furnished cottages and intimate little resorts with limited capacity, to luxurious hotels where the service is the equal of any metropolitan standard. You can select from a number of splendid camps for your growing boy or girl, and the dude or guest ranch is well represented too.

For your convenience, the Burlington has prepared an extensive list of Colorado Hotels, Resorts, Boys and Girls Camps, and Dude Ranches. This list will be found on pages 40 to 51, inclusive, in this booklet.



*Jerome Hotel, Aspen, winter and summer  
resort, with world's longest chair lift.*



*Guests of Elkhorn Lodge, Estes Park, ready for  
an exhilarating morning ride.*



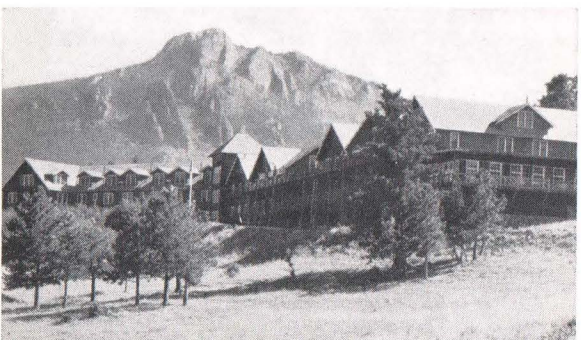
*Typical informal atmosphere  
of a first-class Colorado resort.*



*Troutdale-in-the-Pines, a well known vacation  
place in the Denver Mountain Parks.*



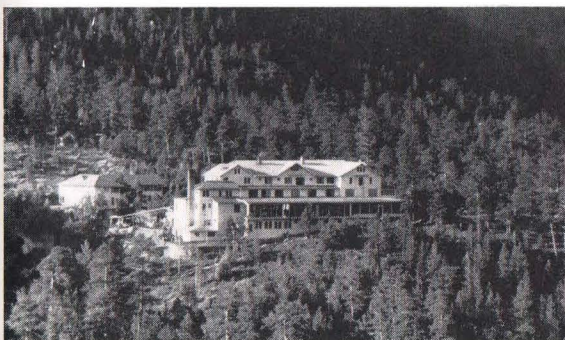
*Brook Forest Inn, near Evergreen  
in the heart of the Denver Mountain Parks.*



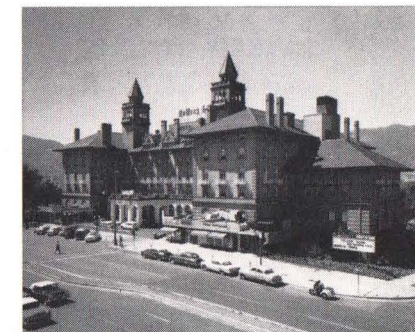
*Mountain-flanked Estes Park Chalet-Ranch,  
Rocky Mountain National Park.*



*Marsdale Lodge, Evergreen*



*The Craggs, Estes Park.*



*Antlers Hotel, Colorado Springs*



# Hotels and Resorts of Colorado

## ROCKY MOUNTAIN NATIONAL and ESTES PARK REGIONS

Name	Manager	P. O. Address (Colorado)	Capacity	RATES (American Plan unless otherwise indicated)		1962 Season
				Per Day	Per Week	
Aspen Lodge	Mrs. J. Droesser	Estes Park	85	Rates on app.	.....	May-Nov.
Baldpate Inn	Mrs. Gordon Mace	Estes Park	55	Rates on app.	Rates on app.	June 15-Sep. 7
Columbine Ranch	Genie H. Bliss	Estes Park	68	Rates on app.	Rates on app.	June 15-Sep. 17
The Crags	Dwight Reed	Estes Park	160	\$7.75-17.00	.....	May 30-Sep. 22
Crystal Springs Lodge	Charles A. Fouts	Allenspark	30	Rates on app.	Rates on app.	May 1-Oct. 1
Daven Haven Lodges	Lester H. Piper	Grand Lake	90	\$14.00 up	\$92.50 up	May 30-Sep. 15
Elkhorn Lodge	Robert C. Venner	Estes Park	150	Rates on app.	Rates on app.	June 4-Sep. 15
Estes Park Chalet	Rocky Mtn. Mot. Co.	Estes Park	250	\$10.50-13.50	\$73.50-94.50	June 15-Sep. 15
Estes Pk. Conference YMCA	W. G. Ruesch	Estes Park	1100	\$6.50 up	\$43.75 up	Open all year
Fawn Brook Inn	John Reinhold	Allenspark	45	\$6.50 up	.....	Open all year
Ferncliff Guest Ranch	D. Newton	Allenspark	70	.....	\$70.00-100.00	June 3-Sep. 4
Grand Lake Lodge	Rocky Mtn. Mot. Co.	Grand Lake	275	\$10.50-13.50	\$73.50-94.50	June 15-Sep. 15
Hewes-Kirkwood Inn	Carlton Harrod	Estes Park	50	\$10.00	\$65.00	May 15-Oct. 15
Hupp Hotel	Carol Brockman	Estes Park	50	Rates on app.	Rates on app.	May-Sept.
Ilse Trading Post	Mildred Ilse	Allenspark	75	\$7.75-15.00	\$46.50-77.50	May 30-Sep. 15
Meeker Park Lodge	O. L. Dever	Estes Park	120	\$7.50-17.00	\$50.00-75.00	May 31-Sep. 15
National Park Hotel	L. T. Byerly	Estes Park	80	(E) \$4-\$9	(E) \$24-\$54	Open all year
Peaceful Pines Resort	M. H. Soglow	Estes Park	24	\$10.00-12.00	\$70.00-84.00	June 25-Sep. 10
Pines Cottages	Mrs. John A. Hughes	Grand Lake	50	Rates on app.	Rates on app.	May 1-Oct. 10
Prospect Inn	Sloan & Hollars	Estes Park	40	Rates on app.	Rates on app.	June 1-Oct. 1
Stanley Hotel	T. J. MacSpeiden	Estes Park	400	\$23.00-42.00	.....	June 5-Sep. 5
Steads Ranch	E. M. Stopher	Estes Park	175	\$11.50 up	\$76.50 up	June 15-Sep. 4
Voelkel's Glacier Lodge	Grover Voelkel	Estes Park	150	Rates on app.	Rates on app.	May 15-Nov. 1
Wild Basin Lodge	O. W. Fiene	Allenspark	125	Rates on app.	Rates on app.	May 15-Sep. 4

## DENVER HOTELS

Hotel	Capacity Rooms	Minimum Daily Rates		Hotel	Capacity, Rooms	Minimum Daily Rates	
		Without Bath	With Bath			Without Bath	With Bath
Adams	100	\$3.50	\$5.50	Kenmark	124	\$3.00	\$4.50
Albany	330	.....	\$6.50	Mayflower	135	.....	\$6.00
Argonaut	160	\$3.00	\$6.50	Newhouse	75	\$3.00	\$4.00
Auditorium	200	\$2.50	\$4.50	Olin	175	.....	\$6.00
Ayres	60	\$3.00	\$4.75	Oxford	250	.....	\$4.50
Brown Palace	588	.....	\$8.50	Park Lane	175	.....	\$8.00
Colburn	101	.....	\$5.00	Plaza	60	\$4.00	\$7.00
Colorado	100	\$3.00	\$5.00	President	166	\$3.00	\$4.00
Cory	100	\$4.00	\$6.00	Sears	100	\$4.00	\$5.00
Cosmopolitan	425	.....	\$8.50	Shirley-Savoy	400	.....	\$6.50
Crest	120	\$2.50	\$3.50	Standish	120	\$3.00	\$4.00
DeSoto	75	\$3.00	\$5.00	Tours	60	\$2.50	\$5.00
Dover	80	\$1.75	\$2.50	Wellington	75	\$3.00	\$5.00
Erhard	60	\$2.00	\$3.50	West	120	\$1.50	\$2.50
Frontier	200	\$2.75	\$5.00	Wynne	75	\$2.50	\$3.50
Hilton	900	.....	\$8.50				

## COLORADO SPRINGS HOTELS

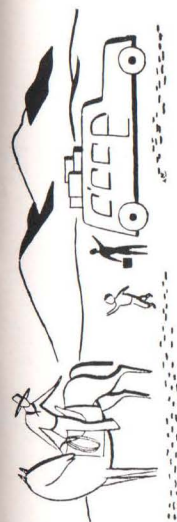
Hotel	Capacity Rooms	Minimum Daily Rates		Hotel	Capacity, Rooms	Minimum Daily Rates	
		Without Bath	With Bath			Without Bath	With Bath
*Acacia	150	\$6.00 up	\$11.00 up	*Cheyenne	50	\$4.00 up	\$8.00 up
*Alamo	200	\$6.50(S), \$10(D) up	.....	*Cliff House	125	\$9(S), \$16.00(D) up	\$14(S), \$20(D) up
*Albany	75	\$3(S), \$4(D) up	\$4(S), \$5(D) up	*Joyce	75	\$4.50 up	\$6.50 up
*Antlers	250	.....	\$14(S), \$17(D) up	*Mayfair	60	.....	\$12(S), \$14(D) up
*Arrow	65	\$3.00 up	\$5 up	*Rex	50	\$3(S), \$4(D) up	\$4(S), \$5(D) up
*Broadmoor	400	.....	\$15(S), \$20(D) up				

## PUEBLO HOTELS

Hotel	Capacity Rooms	Minimum Daily Rates		Hotel	Capacity, Rooms	Minimum Daily Rates	
		Without Bath	With Bath			Without Bath	With Bath
Maine	65	\$2.00	\$3.00	Whitman	112	\$3.00	\$5.00
Vail	100	\$3.25	\$4.00				

NOTE: Data on Hotels, Resorts, Ranches and Camps as shown on this and the following pages has been compiled and checked as carefully as available sources of information permit. Such information, however, is necessarily subject to change without notice and the Burlington Lines cannot be responsible for its current accuracy. Rates quoted do not include 2% Colorado State Sales Tax.

(E)—European Plan. \*June thru Sept.—special winter rates. †American Plan.  
(S)—Single. (D)—Double.



# Dude and Guest Ranches

Name	Manager	P. O. Address (Colorado)	Capacity	RATES (American Plan) Per Week		Other Information
				Rates on app.	Rates on app.	
Almont Resort	Mr. and Mrs. Don Gordon	Almont	45	Rates on app.	Rates on app.	Alt. 8026—At the head of the Gunnison River. Modern lodge and cabins; trout fishing, horseback riding, hiking, sightseeing.
Bear Trap Ranch	James F. Nyquist	P.O. Box 1317 Colorado Springs	150	Rates on app.	Rates on app.	Alt. 9000—High in the Rockies. Cabins; horseback riding, hiking, picnics, barbecues. April 1—Jan. 1. Operated by Inter-Varsity Christian Fellowship. Conventions welcome.
Beaver Brook Lodge & Guest Ranch	L. F. Mehlhorn	Rt. No. 1 Evergreen	30	Rates on app.	Rates on app.	Alt. 8500—Located in vicinity of Mt. Evans. Lodge, cabins. Guests meet at Denver without charge. Horses, fishing, golfing, swimming, rodeos, steak fries, square dancing, children's playground. Open May 15.
*Beaver's S-V Guest Ranch	Mr. & Mrs. Preston Beaver	Winter Park	80	\$98.00-\$122.00	.....	Alt. 8900—70 mi. west of Denver. Lodges and cottages. 60 horses, lake and river fishing, heated swimming pool, scenic trips, hayrides, movies, steak fries, square dancing. Rates all-inclusive. Season June 10-Sept. 10.
Brockhurst Ranch	H. W. Brockhurst	Green Mountain Falls	20	\$75.00	.....	Alt. 8000—Operated as stock ranch for 60 years in Pikes Peak region—ranch house and cabins—rates include saddle horse. Open May 15-Oct. 1.
*Buckhorn Lodge	Rudy and Mabel Menghini	Parshall	45	\$75.00	.....	Alt. 7500—Adj. Rocky Mtn. Nat'l Pk. Lodge, cottages. Fishing, swimming, horses. Rates do not include horse. Season May 15-Oct. 1.
Buckhorn Mtn. Guest Ranch	Charlie Evans	Box 766 Ft. Collins	45	\$90.00-\$100.00	.....	Alt. 7500—A complete mountain vacation in log cabins. Each room with private bath and fireplace. Rates include riding, square dancing, hiking, fishing, sightseeing trips, steak fries, etc. Open June 1-Dec. 1.
*C. Lazy U Ranch	Dick & Katie Schoenberger	Granby	75	\$120.00-\$160.00	.....	Alt. 8100—On Willow Creek adj. Rocky Mtn. Nat'l Pk. Lodge, tiled baths. Fishing, riding, swimming in heated pool. Rates include horse supervision of children 5 to 12 yrs. Winter sports. Open winter and summer.
Cherokee Dude Ranch	Herb Ford	Livermore	40	\$75.00-\$85.00	.....	Alt. 7200—In Roosevelt Nat'l Forest. Lodge and cabins; riding, fishing, tennis, pack trips, recreation hall, swimming pool. Open May 15-Nov. 1. Big game season in October.
*Coulter Lake Guest Ranch	Kelly B. Anderson	P.O. Box 906 Rifle	25	\$70.00-\$80.00	.....	Alt. 8100—In White River Nat'l Forest. Modern cabins with bath; riding, fishing, swimming, boating, square dancing, cook-outs, round-ups, pack trips, jeep trips. Raising registered quarter horses. Season June 1-Oct. 1. Big game hunting in season.
*CV Bar Guest Ranch	R. E. Arcy	Rifle	45	\$95.00	.....	Alt. 6300—Adj. White River Nat'l Forest. Lodge, cabins, working cattle and horse ranch. Riding, fishing, swimming in heated pool; pack trips, hayrides; all ranch activities, big game hunting in season.
*Deer Valley Ranch	Clara & Parker Woolmington	Nathrop	100	\$56.00 up	.....	Alt. 8400—Located at foot of Mt. Princeton in historic Chalk Creek Gulch. Lodge, cottages; natural hot spring swimming pool. All guest ranch activities for families. Hunting, fishing, riding, jeep trips, cook-outs, western parties. Children's rates. Open all year.



# Dude and Guest Ranches (CONTINUED)

Name	Manager	P. O. Address (Colorado)	Capacity	RATES (American Plan) Per Week	Other Information
*Devils Thumb Ranch	Geo. & Don Yager	Fraser	28	Rates on app.	Alt. 8500—Operating cattle ranch. Ranch house and cabins; riding, fishing, hunting, steak fries, breakfast rides, square dancing. Rates include horse. June 1-Sept. 15.
*Don K Ranch	Don Koenig	Silviam Star Rt. Pueblo	55	Rates on app.	Alt. 6000—In San Isabel Forest—Vast acreage; luxurious lodge; fine horses, heated swimming pool, hunting, Children's Counselor. Open June 1-Nov. 1
Drowsy Water Ranch	Glessner-Jacques	Granby	35	Rates on app.	Alt. 8000—Lodge, cabins, with bath. Riding, fishing, cattle roundups, heated swimming pool. Rates do not include horse. June 1-Sept. 15.
*Focus Ranch	J. B. Temple	Slater	30	\$90.00-\$110.00	Alt. 6850—Cattle ranch. Ranch house, cabins; range riding, roundups, fishing, hunting. Rates include horse. Open June 1-Oct. 31.
Greystone Ranch	W. R. Sandifer	Evergreen	40	\$75.00-\$112.50	Alt. 7500—33 mi. SW Denver—Operating ranch 1250 acres. Main lodge and modern cabins. Open all year. Riding, hiking, fishing, golf, pack trips, big game hunting in season.
*Holzwarth's Neversummer Ranch	John G. Holzwarth	Grand Lake	50	\$60.00 up	Alt. 8900—In Rocky Mtn. Natl. Park, 10 mi. from Grand Lake. Open June 15-Sept. 15—Lodge, cabins; saddle horses, pack trips, fishing, steak fries, square dancing, ranch activities.
*JVL Lost Valley Ranch	Bob Foster	Rt. 2, Sedalia, Colo.	45	Rates on app.	Alt. 7000—A working ranch in splendor of Pike Nat'l. Forest, 65 mi. from Colorado Springs and Denver. Lodge, cabins; riding, working cattle, branding, pack trips, fishing, swimming in heated pool, steak fries, dancing. Big-game hunting in fall. Open all year.
*Lake Mancos Lodge	Lloyd and Joan Schnett	Mancos	30	\$75.00	Alt. 8000—Western Colorado—Modern cabins, heated pool. Winter address: 845 Acoma St., Denver, Colo.
*Lake Trail Guest Ranch	Merle & Nancy Sandefur	Steamboat Springs	25	\$66.00-\$84.00	Alt. 7000—Northwestern Colorado—Lodge, cabins; horses, fishing, swimming, elk and deer hunting. Open May 15-Nov. 5.
*McGraw	Frank McGraw	Estes Park	40	\$75.00-\$100.00	Alt. 7500—Northeastern Colorado—adj. Rocky Mtn. Natl. Park. Ranch house, cabins; horses. Open June 1-Oct. 1.
Nine Quarter Circle Ranch	Paul and Phyllis Carmichael	Star Route Granby	30	Rates on app.	Alt. 8000—Cattle Ranch on Colorado River just south of Rocky Mtn. Nat'l. Park. High-class individual housekeeping homes, with electric kitchen, tile tub and shower bath, fireplace, gas heat, daily maid and shopping service. Nearby AAA Restaurants. Private river fishing, riding and wide variety of activities. Supervised children's programs. Open all year.
Paradise Ranch	Frank S. Snell Jr.	Woodland Park (Near Colo. Spgs.)	200	\$80.00-\$165.00	Alt. 8000—Cattle ranch. Ranch house, cabins; pack trips, swimming, tennis, planned entertainment, dancing, movies twice a week. Rodeo weekly. Rates include horse. Open May 15-Oct. 1.
*Phipps 4UR Ranch	A. R. Phipps	South Fork	40	Rates on app.	Alt. 8500—In Rio Grande Nat'l. Forest, 3,000-acre guest and cattle ranch. Excellent private fishing on the Upper Rio Grande and Goose Creek. Hot Mineral pool. Riding, big game hunting. For reservation write 812 Denver Natl. Bldg., Denver 2, Colo.
*Rainbow Valley Ranch	Ken and Betty Fritts	Divide	50	\$108.00-\$180.00	Alt. 8500—Adj. Pike Natl. Forest, 25 mi. from Colorado Springs. Lodge, cabins; riding, swimming in heated and filtered pool, fishing, pack trips, cookouts, special children's program. Skiing, skating, tobogganing. Big game hunting in season. Open all year.
*Rawah Guest Ranch	Ralph Jordan	Glendevy	32	\$70.00-\$92.00	Alt. 8400—In remote and rugged mountain country—Modern lodge and cabins located on banks of Big Laramie River; 60 mi. from town. Riding, fishing, hiking, pack trips into Rawah wilderness area. Rates do not include horse. Season May 29-Sept. 20. Winter address: Cactus Patch Ranch, Route 3, Longmont, Colo.
*Rippling River Ranch	R. P. Steckel	Gunnison	40	\$70.50 up	Alt. 7200—On Gunnison River. Lodge, cabins. Trout fishing, pack trips, big game hunting. Rates do not include use of horse. Open May 15-Nov. 1.
*Saddle Pocket Ranch	France Marsh	Slater	18	\$77.00-\$95.00	Alt. 6700—In Northwestern Colorado. Working ranch. June 15-Sept. 7. Cabins, baths; good horses, rodeos, swimming, fishing, hunting.
*Seven-W Ranch	Mr. & Mrs. Burt George	Gypsum	25	\$70.00-\$75.00	Alt. 8700—In White River National Forest. Lodge, cabins with bath; pack trips, fishing. Open June 1 through hunting season (Nov. 1). Winter address: Rifle, Colo.
*Sky Corral Ranch	Mark M. Grubbs, Jr.	Bellvue	24	\$90.00	Alt. 7500—Open all year. Rate includes use of horse. Guests met at Fort Collins or Denver.
*Snowmass Lodge	Everett & Frederica Peirce	Box 802, Aspen	28	\$70.00-\$85.00	Alt. 8060—Located high in the Rockies near Aspen. Lodge, cabins, set in the alpine beauty of Snowmass Valley overlooking towering peaks of the Snowmass-Maroon Bells primitive area. Fishing, horse-back riding, hiking, pack trips. Season May 15-Nov. 15.
*Snowshoe Ranch	Bert and Clarice Christensen	Kremmling	25	\$70.00-\$90.00	Alt. 8500—In primitive area overlooking Continental Divide. Ranch house, fishing, riding, ranch activities. Hunting in season. Open June 15-Oct. 31.
*Spruce Tree Guest Ranch	Paul H. Lindstrom	Rte. #1, New Castle	20	\$45.00-\$50.00	Alt. 5800—Modern log cabins in beautiful setting, 15 miles west of Glenwood Springs. Horseback riding, hiking, swimming, scenic rides, stream and lake fishing. Hunting in season. Family rates. Open May 1-Nov. 1.
Sweetwater Lake Ranch Resort	P. M. King	Gypsum	45	Rates on app.	Alt. 7500—Sweetwater Lake in White River Nat'l. Forest. Cabins, cafe; fishing, boating, riding, pack trips, big game hunting in season. Open May 25-Nov. 1.
*Sylvan Dale Ranch	Maurice and Mayme Jessup	Estes Park Rte. Loveland	70	\$63.00-\$77.00	Alt. 5325—Located at mouth of Big Thompson Canyon near Estes Park and Rocky Mtn. Natl. Park. Unusual outside eating area, beautiful dining room along river, heated swimming pool, recreation room; riding arena; fishing, pack trips, chuck wagon dinners, breakfast rides. Open June 4-Sept. 2.
*Tarryall River Ranch	Joan & Cotton Gordon	Lake George	35	\$95.00	Alt. 8200—In spectacular Tarryall Mts., Surrounded by Pike Nat'l. Forest. Lodge, cabins and large recreation hall. Trail rides, fishing, square dancing, cook-outs, all ranch activities.



# Dude and Guest Ranches (CONTINUED)

Name	Manager	P. O. Address (Colorado)	Capacity	RATES (American Plan) Per Week	Other Information
Teelawuker Ranch	Wm. Y. Penn	Box 288 Bayfield	40	\$120.00-\$140.00	Alt. 7550—Lodge, cabins: 3½ miles private fishing on Pine River. Located 45 miles NE of Durango in San Juan Mtns., almost completely surrounded by National Forest. Horses available. Pack trips to wilderness areas. Season May to November. Winter address: 711 Midland Tower, Midland, Tex.
Trail Creek Ranch	R. J. Swan	Livemore	12	Rates on app.	Alt. 7200—Northern Colorado. Ranch house. Rate includes saddle horse. Rodeos, fishing. Open June 1-Nov. 1.
Triple B Guest Ranch	Bernard B. Burns	Woodland Park	60	Rates on app.	Alt. 8000—In Pike Nat'l. Forest. Lodge, cabins; club house; swimming, tennis, fishing, movies, dancing, barbecues, community activities. Horses and pack trips included in rate. Open May 1-Oct. 15.
*Tumbling River Ranch	Ernie and Meezie Keyes	Grant	40	\$115.00	Alt. 9000—In Pike Nat'l. Forest. Lodge, cabins; riding, hiking, fishing, dancing, rodeos, jeep trips, heated swimming pool, ranch activities, skiing. Rates include horse.
*Two Bars Seven Ranch	Ted Schaffer	Virginia Dale	15	\$110.00	Alt. 7300—Cattle ranch in Northern Colorado. Ranch house and lodge; riding, fishing, roundups, rodeos, hunting, pack trips. Open June 1-Oct. 31.
*U T Bar Ranch	R. M. Leake, Jr.	Glendevy	25	\$90.00-\$100.00	Alt. 7965—Cattle and horse ranch—fishing, riding, pack trips, square dancing, river swimming in July and August. Ranch house, cabins, with bath—rates include saddle horse. Open June 15-Sept. 30.
*Wilderness Trails	Bob Jacobson	Bayfield	40	\$95.00-\$113.00	Alt. 7400—In the San Juan Basin. Lodge, modern cabins; riding, fishing, boating, pack trips, hunting. Season June-September.
*Wildhorn Guest Ranch	Hank Hoder	Florissant	100	\$87.50-\$125.00	Alt. 8500—In Pike Nat'l. Forest. Lodge, cabins; riding, fishing, pack trips, chuck wagon dinners, heated and filtered swimming pool. Open June 1-Oct. 1.
*Wind River Ranch	Bob & Helen Hutchinson	Estes Park	42	Rates on App.	Alt. 9300—Located at foot of Long's Peak, 8 mi. south of Estes Park. Lodge, cabins; heated swimming pool, riding, fishing, pack trips, picnics. Open June 15-Mid-Sept. (Member A.A.A.)
Woods Lake	Bowles Bros.	Eagle	75	\$60.00 up	Alt. 9400—Central Colorado on Woods Lake near Mount of Holy Cross. Open June 1-Nov. 1. Lodge, cabins; horses, pack trips, fishing, deer and elk hunting. Winter address: Basalt, Colorado.

\*Member Colorado Dude and Guest Ranch Association—Secy. Mrs. R. L. Schoenberger, Granby, Colo.  
Page 44

# Girls Vacation Camps



Name	Director	P. O. Address (Summer) (Colorado)	Capacity	Rates†	Ages	Other Information and Winter Address
Bluebird Lodge	Miss M. E. Collopy	Gold Hill	40	For women only Rates on application		Lodge in mountains of Boulder-Glacier districts; summer only. Winter address: 101 W. Adams St., Chicago, Ill.
Camp Trojan Ranch—Juniors, Intermediates, Seniors	G. S. Walker	Boulder (Box 711)	25 25 25	\$325 each 4-wk. term	7-11 12-14 15-17	Season June 1 to Sept. 1. Horsemanship, gymnastics, trampolines, riflery, archery, crafts, nature study; complete swimming program, heated pool; hiking, fishing, pack trips, waterfront program with sailing, motor boating and water skiing. (See Note 2).
Cheley Colorado Camps—Lower Chipeta, Camp Chipeta, Chipeta Senior, Trail's End Ranch	I. A. Cheley E. E. Altick	Estes Park	40 66 50 52	\$335 each 4-wk. term \$375 each 8-wk. term	9-11 12-14 15-17 12-17	Season June 26-Aug. 20—(see Note 1). Winter address: 601 Steele St., Denver, Colo.
Jim Shoulders' Rampart Range Youth Ranch	Bill & Marilyn Mann	Woodland Park	60	Rates on app	8-17	June 27-Aug. 20. Supervised work program. Horsemanship, sports, swimming, rodeos; arts and crafts. Winter address: 5411 Hedgerow Ave., Peoria, Ill. (Member A.C.A.)
Long Scraggy Mtn. Ranch	Mrs. L. E. Hayden	Buffalo Creek	56	\$300 4-wk. term \$575 8-wk. term	7-15	Season June 17-Aug. 11. Surrounded by Pike Nat'l Forest. Modern, spacious buildings. Riding, swimming, hiking, pack trips, all sports, crafts, dramatics, music, dancing. Winter address: Box 15006, Denver 15, Colo.
Perry-Mansfield—Juniors, Intermediates, Seniors, College unit, Graduates	Charlotte Perry Portia Mansfield	Steamboat Springs	30 30 50 50 10	June 28-Aug. 19 \$645 inclusive, \$560 without riding (college unit)	7-12 13-14 15-17 17 up 22 up	Northwestern Colorado. Instruction in riding, swimming and tennis; dance, drama, music, stage production and art. Auto trips, pack trips. Horsemanship and Counselor Training Courses. National Rating Center for Riding and Dance Seminar Aug. 20-25. Winter address: Box 4026, Carmel, Calif.
Rocky Mountain Summer School Camp	John S. Holden	P.O. Box 327, Carbondale	40	6 wks. \$500	14-18	Co-educational. Mornings devoted to academic subjects, afternoons to sports and work on ranch, evenings to arts, crafts and studies. Week-end trips to high country; one long trip to Navajo Reservation.
Sylvania of the Rockies	Amy Lou Holmes Elizabeth Hanaman	Bailey	85	8 wks. \$600	6-17	(Arabian horses) tennis, swimming, dramatics, music, arts and crafts, dancing, archery, pack trips. Excellent staff; registered nurse. 27th season. Winter address: 3037 Niagara, Denver 7, Colo.
Wa-na-na	Mrs. B. H. English	Woodland Park	65	4 wks. \$325	9-16	Season June 15-Aug. 13. Riding, hiking, tennis, swimming, golf, trampolines, ice skating, nature lore, archery, art crafts, dramatics, music, modeling. Winter address: 3408 Westcliff Road, South Ft. Worth, Texas. (Member A.C.A.)

†Rates shown on American plan include meals, lodging, and (in some cases) transportation to and from nearest railway station.

NOTE 1: CHELEY COLORADO CAMPS—FOR BOYS AND GIRLS: The Cheley Colorado Camps are located on the Land O'Peaks Ranch, five miles south of Estes Park, adjoining Rocky Mountain National Park. Activities are under a large group of trained instructors and counselors (one to each 4 campers), all under the direction of J. A. Cheley and E. E. Altick. Chief object of the camps is to provide a vacation both enjoyable and educational with well-balanced daily programs of supervised play and instruction . . . including campcraft, woodcraft, archery, horsemanship, fishing, nature lore, mountaineering and pack trips. Camps are segregated as to boys and girls and further divided as to ages.

NOTE 2: CAMP TROJAN RANCH FOR BOYS AND GIRLS: Separate programs for boys and girls. Supervised co-ed activities. Two-week camp periods for campers 11 & under—\$150.00  
Page 45



# Boys Vacation Camps



Name	Director	P. O. Address (Summer) (Colorado)	Capacity	Rates†	Ages	Other Information and Winter Address
Blue Mountain Ranch Boys' Camp	Bill & Dorothy Allen	Florissant	60	Rates on app.	6-16	Operated by Coach Bill Allen, Paschal High School. College graduate counselors. All sports, including sight-seeing trips, horseback riding, pack trips and trout fishing. Winter address: 3517 Rogers, Ft. Worth, Tex.
Camp Holy Cross	Rev. Luke Hallenbeck, O.S.B.	Canon City (Box 351)	100	Rates on app.	8-14	Operated by Benedictine Monks. All sports including riding, swimming and Indian lore. June 19-Aug. 7. Winter address: Camp Holy Cross, Canon City, Colo.
Camp Trojan Ranch— Chipmunks Juniors Seniors	G. S. Walker	Boulder (Box 711)	25 25	\$325 each 4-wk. term	7-10 11-13 14-17	Season June 1 to Sept. 1. Horsemanship, gymnastics, trampolines, riflery, archery, crafts, nature study; complete swimming program, heated pool; hiking, fishing, pack trips, waterfront program with sailing, motor boating and water skiing. (See Note 2—Page 45).
Chelvey Colorado Camps— Camp Havaha Camp Ski-Hi Lower Ski-Hi Trail's End Ranch		Estes Park	59 52 34 52	\$335 each 4-wk. term \$575 each 8-wk. term	13-17 11-12 9-10 12-16	Season June 26-Aug. 20—(see Note 1, page 45). Winter address: 601 Steele St., Denver 6, Colo.
Jim Shoulders' Rampart Range Youth Ranch	Bill & Marilyn Mann	Woodland Park	60	Rates on app.	8-17	June 27-Aug. 20. Supervised work program. Horsemanship, sports, swimming, rodeos; arts and crafts. Winter address: 5411 Hedgerow Ave., Peoria, Ill. (Member A.C.A.)
Monarch Baseball Camp and Wauneta Resort	Rod F. Pringle	Doyleville, Colo.	80	1 wk. \$50 2 wks. \$100	9-18	Specializing in baseball training, canoeing, trout fishing, warm water swimming pool. 28-room hotel for parents and guests by day or week. Open all year for guests.
Rocky Mountain Summer School Camp	John S. Holden	P.O. Box 327, Carbondale	40	6 wks. \$500	14-18	Co-educational. Mornings devoted to academic subjects, afternoons to sports and work on ranch, evenings to arts, crafts and studies. Week-end trips to high country; one long trip to Navajo Reservation.
Skyline Ranch	Peter & Thelma Gabel	Lyons	40	Rates on app.	8-15	Season June 23-Aug. 19. Horsemanship, rodeos, hiking, swimming, canoeing, sailing, fishing, pack trips, athletics, crafts. All adult counselors. Winter address: 2719 South Adams, Denver 10, Colo.
Y.M.C.A. Boys' Camp (Camp Chief Ouray)	Dwight Johnson	Granby	160	\$40.00 wk. up	8-16	High in the Rockies—on Colorado River, June 17-Aug. 26 —ranch and horses; lodge; cabins, recreation hall; swimming, boating, sports, crafts. Winter address: Denver YMCA, 25 E. 16th St., Denver 2, Colo.

†Rates shown on American plan include meals, lodging and (in some cases) transportation to and from nearest railway station.

Page 46

# Hotels and Resorts - GENERAL LIST



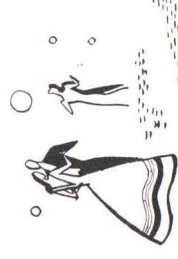
Postoffice, County— Hotels, Resorts, etc.	Manager	Capacity	RATES (American Plan unless otherwise indicated) Per Day Per Week	Other Information
ALAMOSA (Alamosa Co.)—Alt. 7546—On Rio Grande River, in southern Colorado, near Great Sand Dunes Natl. Monument. Victoria Hotel Walsh Hotel	N. L. Busby Lucille McGinty	75 Rooms 48 Rooms	Rates on application (E) \$3.00-\$5.00	Dining room and lounge. Swimming pool. Open all year. Open all year.
ASPEN (Pitkin Co.)—Alt. 7913—Famous silver-mining district of central Colorado in White River National Forest Hotel Jerome, and dormitories	L. M. Elisha	250	(E) \$8.00 up (E) \$3.00 up	Open all year. Fishing, swimming summer season in outdoor pool. Tennis, dancing, saddle trips, deer hunting, skiing, one of the world's longest chair lifts. Summer music festival of great music and philosophy. Home of the Aspen Institute for humanistic studies, Aspen health center.
BLACK HAWK (Gulpin Co.)—Alt. 9000—Famous old mining camp, site of early Gregory diggings and Central City Opera. Heidi Chalet	Katherine Olsen	20	\$10.50 \$68.25	June 15-Sept. 15. Chalet, modern cabins, excellent cuisine. Specialty: Swiss dinners—Reservations only.
BOULDER (Boulder Co.)—Alt. 5350—Gateway to Boulder-Glacier region; University of Colorado (summer school) Blanchard Lodge Bluebird Cottage—(see Girls' Camps) Boulderado Hotel Colorado Chautauqua	Mr. & Mrs. L. Schnell Ralph L. Hune Mr. & Mrs. W. C. Wining	35 100 Rooms 400	Rates on application Rates on application Rates on application	In Boulder Canyon. Open all year. In Boulder. Open all year. June 1-Oct. 1. Within city limits. 6 cottages, 2 lodges, 3 apartments; auditorium, dining hall, community house. Winter address: Colorado Chautauqua, Boulder, Colo.
James Hotel	Mrs Joy Russum	20	Rates on application	All outside rooms. Open all year.
CANON CITY (Fremont Co.)—Alt. 5344—On Arkansas River, adj. Royal Gorge and Suspension Bridge—mineral springs and baths. Heart of good hunting and fishing. Canon Hotel Strathmore Hotel	D. D. Dimmitt Otto Lentz	60 Rooms 60	(E) \$3.50 up (E) \$2.00 up (E) \$12.00 up	Open all year. Coffee Shop. Open all year.

(List continued on next page)

Page 47



# Hotels and Resorts - GENERAL LIST (CONTINUED)

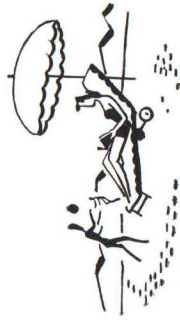


Postoffice, County— Hotels, Resorts, etc.	Manager	Capacity	RATES (American Plan unless otherwise indicated) Per Day Per Week		Other Information
<b>CENTRAL CITY (Giplin Co.)—Alt. 8560—Famous gold-mining district—Annual Opera and Play Festival in Old Opera House (July-August)</b>					
Chain-O-Mines Hotel	John R. Guilfoyle	20 Rooms	(E) \$6.00 up	.....	Newly renovated modern hotel. Open June 1-Sept. 1.
Teller House	John R. Guilfoyle	75 Rooms	(E) \$6.00 up	.....	Picturesque hotel of early mining days. Open June 1-Sept. 1.
<b>CREEDE (Mineral Co.)—Alt. 8844—Famous silver-mining camp on Rio Grande River, southwest Colorado.</b>					
New Antlers Park Resort	F. W. Hohnbaum	80	Rates on application.		May 15 to Oct. 15—hotel, cabins. Trout fishing, hunting.
<b>DECKERS (Douglas Co.)—Alt. 6400—Fishing resort on South Platte River in Pike Natl. Forest—mineral springs.</b>					
Deckers Resort	H. C. Kimbrough	60	Rates on application		Modern housekeeping Cabins; Dining Room, Lounge; fishing. P.O. Address: Sedalia, Colo.
Grandview Lodge	T. Lindsay	42	Rates on application		Open May 1-Nov. 1—Lodge, modern housekeeping cottages; hiking; fishing; hunting. P.O. address: Rt. 2, Sedalia, Colo. Winter address: 1002 Garfield St., Denver 6, Colo.
<b>DELTA (Delta Co.)—Alt. 4980—Western Colorado on Gunnison and Uncompahgre River, near Uncompahgre and Grand Mesa Natl. Forests.</b>					
Delta House	L. F. Young	35 Rooms	(E) \$2.50 up	.....	Near Black Canyon of the Gunnison Natl. Monument. Open all year.
<b>DURANGO (La Plata Co.)—Alt. 6520—Southwest Colorado on Animas River—gateway to Mesa Verde Natl. Park.</b>					
Durango Hotel	Geo. Geisler	30 Rooms	Rates on application		Open all year.
Savoy Hotel	Louise Maynes	34 Rooms	(E) \$2.00 up	(E) \$10.00 up	Open all year
Strater Hotel	E. A. Barker, Jr.	125 Rooms	(E) \$4.00 up	.....	Open all year.
<b>EVERGREEN (Jefferson Co.)—Alt. 7750—In Denver Mountain Parks, on Bear Creek—Evergreen Lake—Golf.</b>					
Marshdale Lodge	David W. Eads	100	.....	\$58.00-\$77.00	Lodges, cottages, horses, tennis, golf, tours. Open May 15-Sept. 15.
Troutdale-in-the-Pines	William Higgins	150 Rooms	Rates on application		Hotel, heated outdoor swimming pool, horses, tennis, golf, fishing, barbecue; dancing, nightly entertainment. Open May 28-Oct. 1
<b>FAIRPLAY (Park Co.)—Alt. 9964—Old placer mining district, in Pike Natl. Forest—South Park City Museum Town.</b>					
Fairplay Hotel	Frank E. Burgess	50 Rooms	Rates on application		Winter address: 420 N. Michigan Ave., Chicago 11, Ill.
<b>FORT COLLINS (Larimer Co.)—Alt. 5000—Northern gateway to Colorado vacation regions. Poudre Canyon resorts, Roosevelt Natl. Forest—Colorado State University—golf club.</b>					
Hotel Armstrong	Ace Gillett	80 Rooms	(E) \$2.50 up	.....	Fishing, hunting, golf. Open all year.
Northern Hotel	James J. Marrell	100 Rooms	(E) \$2.50 up	.....	Open all year.
<b>GLENWOOD SPRINGS (Garfield Co.)—Alt. 5758—On western slope of Rockies—adj. White River Natl. Forest—mineral springs, golf.</b>					
Hotel Colorado	Bob Dean	200 Rooms	Rates on application		Open June 1-Oct. 1—swimming, mineral baths, horseback riding, sightseeing, golf, tennis, fishing, hunting, western barbecues, dancing.
Denver Hotel	Henry A. Bosco	100 Rooms	(E) \$4.50 up	.....	Dining room and lounge. Open all year.
Glenwood Hot Springs	E. Bruce Isaacson	100 Rooms	(E) \$3.00-\$20.00	.....	Hot mineral springs swimming pool, golf, tennis, fishing, hiking, riding, hunting, skiing. Open all year.
Okanda Lodge—Buster Brown Ranch	Buster Brown	40	Rates on application		Pack trips during summer months, fishing, hiking, hunting in season. 9 mi. west of Glenwood Springs. Special rate for children.
<b>GOLDEN (Jefferson Co.)—Alt. 7460—In Denver Mountain Parks, Colorado School of Mines.</b>					
Lookout Mountain Lodge	T. C. Cartwright	30	Rates on application		Open all year. Also European Plan.
<b>GOLD HILL (Boulder Co.)—Alt. 8300—Mountain resort in Boulder-Glacier district. (See also Boulder, Colo.)</b>					
Bluebird Lodge—(see Girls' Camps)					
<b>GRAND JUNCTION (Mesa Co.)—Alt. 4583—Western Colorado, at junction Gunnison and Colorado Rivers, gateway to Colorado Natl. Monument, Grand Mesa Natl. Forest.</b>					
La Court Hotel	Wm. Buthorn	175 Rooms	(E) \$5.00 up	.....	Hotel and lodge; heated swimming pool. Open all year.
St. Regis Hotel	Elmer Mills	75 Rooms	(E) \$2.75 up	.....	Open all year.
<b>GREELEY (Weld Co.)—Alt. 4651—Northern Colorado, on Cache la Poudre River—Colorado State Teachers College (summer school)—Annual rodeo (July)</b>					
Camfield Hotel	Henry Watson	128 Rooms	Rates on application		Dining room and coffee shop. Open all year.
Sterling Hotel	E. H. Smith	60 Rooms	Rates on application		Open all year. Cafeteria.
<b>GREEN MOUNTAIN FALLS (El Paso Co.)—Alt. 7843—In Pike's Peak district on Ute Pass.</b>					
Outlook Lodge	Kay R. Mason	10 Rooms	\$7.50	\$49.50	Write for Family rates. Open June 15-Sept. 15.
<b>GUNNISON (Gunnison Co.)—Alt. 7683—Western Colorado, on Gunnison River, adj. Gunnison Natl. Forest—Western State College—hunting, rodeo and fishing.</b>					
Allen Hotel	Mr. & Mrs. E. C. Adams	40 Rooms	Rates on application		Coffee shop, cocktail lounge, dining room. Open all year.
New Columbine Hotel	T. E. McCartney	27 Rooms	Rates on application		Open all year.
<b>HEENEY (Summit Co.)—Alt. 8000—On shore of Green Mountain Reservoir, which is on the Blue River.</b>					
Green Mountain Resort	C. H. Halldorson	80	(E) \$5.50 up	.....	Cabins, cafe; fishing, boating, hiking, hunting. Close to primitive area.
<b>HOT SULPHUR SPRINGS (Grand Co.)—Alt. 7665—Central Colorado, adj. Arapahoe Natl. Forest—hot mineral springs, swimming pool, winter sports.</b>					
Riverside Hotel	Mr. & Mrs. Geo. Hurt	30 Rooms	Rates on application		Hunting and fishing—Open all year.
Silver Spruce Hotel	Mrs. Iva G. Smith	25 Rooms	Rates on application		Near Hot Sulphur Baths and Snow King Valley Ski Areas. Open all year.
<b>IDAHO SPRINGS (Clear Creek Co.)—Alt. 7549—In Clear Creek Canyon, famous gold-mining district—radium hot springs and vapor baths.</b>					
Radium Hot Springs	M. H. Steplton	70	Rates on application		Hotel, dining room—radium baths. Open all year.
The Hanson Lodge	Yngve & Sunny Hanson	30	Rates on application		Open all year.

(List continued on next page)



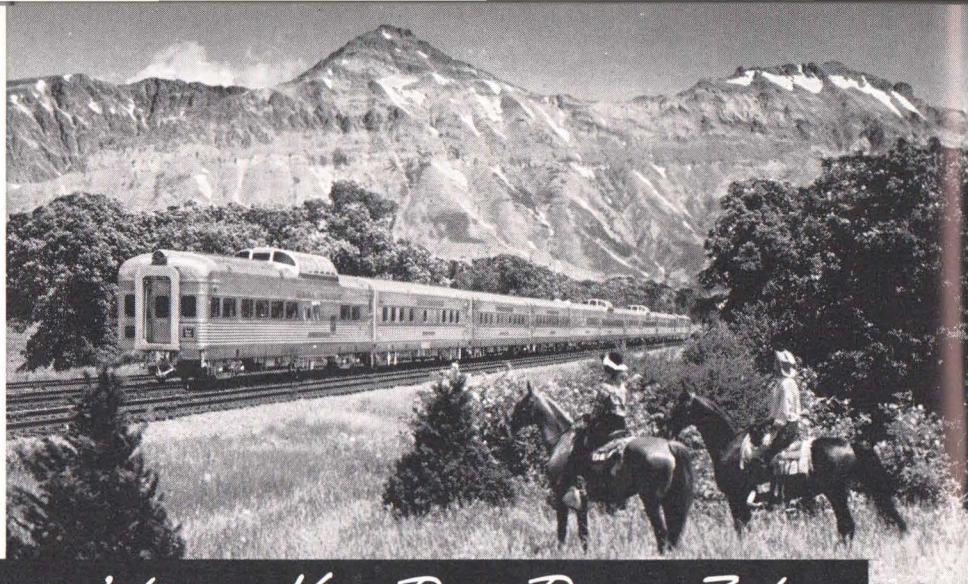
# Hotels and Resorts - GENERAL LIST (CONTINUED)



Postoffice, County— Hotels, Resorts, etc.	Manager	Capacity	RATES (American Plan unless otherwise indicated) Per Day Per Week		Other Information
JELM, WYO. (Larimer Co.)— <i>Alt. 8300—In Roosevelt Natl. Forest, extreme northern Colorado</i> Glendevy Lodge	O. H. Elliott	45	(E) \$5.00	(E) \$18.00	May 1-Nov. 1—cabins; fishing, pack trips, hunting.
LEADVILLE (Lake Co.)— <i>Alt. 10,200—Highest incorporated city in world—center of historic gold and silver mining region (site of famous Matchless Mine)—near highest mountains in Colorado.</i> Vendome Hotel	C. J. Lessard	100 Rooms	(E) \$3.00 up	.....	Fishing, hunting, golf, skiing, winter sports. Open all year.
LONGMONT (Boulder Co.)— <i>Alt. 5000—Gateway to Rocky Mountain Natl. Park.</i> Imperial Hotel	D. L. McLean	60 Rooms	Rates on application		Open all year.
LYONS (Boulder Co.)— <i>Alt. 8500—Gateway to Rocky Mountain Natl. Park via St. Vrain routes.</i> Point O'Pines Lodge	Katherine & Emma Wolter	40	\$7.50 up	.....	In Allenspark. Open June 15-Sept. 15—lodge; cabins; riding.
MANITOU SPRINGS (El Paso Co.)— <i>Alt. 6000—Foot of Mt. Manitou and Pikes Peak.</i> Cliff House	H. R. Burland	153 Rooms	(E) \$5.00 up (A) \$10.00 up	.....	Open all year.
Sunnyside Hotel	Mr. & Mrs. Carl Truman	50 Rooms	Rates on application		Open June 1-Oct. 1
MEEKER (Rio Blanco Co.)— <i>Alt. 8000—White River National Forest.</i> 7 Lakes Ranch	John & Alice Holzbstein	20	\$10.00-\$12.00	\$55.00-\$65.00	Modern cabins; horses, fishing, hunting. Open May 15-Oct. 31.
MONTE VISTA (Rio Grande Co.)— <i>Alt. 7665—Southwest Colorado—Annual San Luis Valley Ski-Hi Stampede Rodeo (August)</i> El Monte Hotel	Mrs. R. R. Shaub	50 Rooms	Rates on application		Open all year.
MONTROSE (Montrose Co.)— <i>Alt. 5811—Western Colorado, gateway San Juan Mountains, near Black Canyon of the Gunnison—outdoor swimming pools.</i> Belvedere Hotel	Vern P. Souder	55 Rooms	Rates on application		Open all year.
OURAY (Ouray Co.)— <i>Alt. 7802—Western Colorado, famous mining camp in Uncompaggre Natl. Forest, adj. San Juan Mountains—hot and cold mineral springs, swimming pools, fishing, hunting.</i> Beaumont Hotel	Thos. A. Beattie	45 Rooms	Rates on application		Dining room, cocktail lounge, Silver Cock Ballroom. Open all year.
SALIDA (Chaffee Co.)— <i>Alt. 7050—In Arkansas River Valley, adj. Sangre de Cristo Range—fishing, hot mineral baths and indoor swimming pool; winter sports.</i> Palace Hotel	D. Ramsey	50 Rooms	(E) \$3.00 up	.....	Open all year.
Sherman Hotel	R. C. Heberer	50 Rooms	(E) \$2.50 up	.....	Open all year.
SILVERTON (San Juan Co.)— <i>Alt. 9300—Near Canyon of the Rio de Las Animas—high-ranking gold, silver, lead and zinc area.</i> The Grand Imperial Hotel	W. G. Parcell	44 Rooms	\$6.00 up	.....	Open all year.
STEAMBOAT SPRINGS (Routt Co.)— <i>Alt. 6683—Northwest Colorado, gateway to Routt Natl. Forest region—mineral springs, golf, hunting, winter sports.</i> Glen Eden Ranch	Lloyd Johnson	35	Rates on application		On Elk River—Modern housekeeping cabins; fishing, hunting in season. Open June 1-Sept. 15. P. O. Address: Clark, Colo.
TELLURIDE (San Miguel Co.)— <i>Alt. 8756—Famous San Juan mining camp in San Miguel Mountains, western Colorado.</i> Sheridan Hotel	Rosa Nicks	40 Rooms	Rates on application		Open all year.

(E)—European Plan. Rates quoted do not include 2% Colorado Sales Tax.





## *Burlington's big new Vista-Dome Denver Zephyr*

### **Just Overnight From Chicago To DENVER and COLORADO SPRINGS**

The color and gaiety, the warmth and hospitality of Colorful Colorado are embodied in Burlington's famous Vista-Dome Denver Zephyr. It provides direct, through service between Chicago, Denver and Colorado Springs just overnight . . . ideal, indeed, for the Colorado vacationist.

Each Denver Zephyr includes a magnificent full-length parlor-observation-lounge car with Vista-Dome; all-room sleeping cars containing bedrooms, compartments and roomettes; a colorful dining car; two Slumbercoaches; the Chuck Wagon (mid-train buffet-

dome-lounge car); reclining-seat chair coaches with leg-rests and adjustable head-rests. Each car is harmoniously decorated in colors complementary to the State of Colorado.

One of many Denver Zephyr features is the specially-designed Slumbercoach, introduced for the first time anywhere. Coach passengers occupy individual rooms, each with window seat by day, a real bed at night, and toilet and wash basin, mirror, and ample luggage space. Here is privacy, convenience, and comfort all at regular coach fare plus modest occupancy charge.

*Sips 'n' snacks, or plate meals, at the Chuck Wagon lunch counter.*

*Dinner and breakfast in the dining car are delightful experiences.*



The Chuck Wagon, patterned after the romantic West, serves sips 'n' snacks and thrift-priced plate meals at a lunch counter seating twelve and a coffee shop seating nineteen. Western murals and original wood carvings adorn the walls. Upstairs there is a Vista-Dome for 24 persons.

The chair coaches are fully-carpeted, well lighted, and have large dressing rooms for the ladies. All seats (except in the Vista-Dome) are reserved and individually assigned. Famous Burlington meals are served in the colorful dining car. One may choose from a wide variety of tempting dishes.

The parlor-observation-lounge is one of the most popular cars on the train. Located here is the smart Colorado Room, a charming meeting place, ideal for before-dinner refreshments or an evening of friendly fellowship. Deep-cushioned chairs, current periodicals, and a convenient writing desk are found in the observation-lounge. A short stairway leads to the Vista-Dome. There are also reserved parlor chairs and a parlor-drawing room.

For those vacationing in Colorful Colorado, the Vista-Dome Denver Zephyr between Chicago, Denver and Colorado Springs represents Perfection Plus in luxury transportation . . . at no extra fare. It operates on fast, convenient schedules. Departure westbound from Chicago is in the late afternoon, with next morning arrival in Denver and Colorado Springs. Eastbound, departure from both Colorado Springs and Denver is in the afternoon, with arrival in Chicago after breakfast the next morning.

Page 53



*Restful, relaxing travel in the fully-carpeted chair coaches. Seats recline and have leg-rests and adjustable head-rests.*



*Day and night occupancy of Slumbercoach room. Window seat by day, comfortable full-length bed at night.*



*Pullman roomette for individual traveler has foam rubber seat, wide, soft bed, toilet facilities, ample storage space.*





*Large double bedroom on the Denver Zephyr. May be used singly or ensuite for families or groups traveling together.*



*The observation-lounge is a favorite gathering place for Denver Zephyr Pullman passengers. Note stairway to the Vista-Dome.*



*There are three thrilling Vista-Domes on the Denver Zephyr from which passengers enjoy the scenery in air-conditioned comfort.*

### *Other Colorado Service*

Readily accessible from Denver are Boulder, Longmont, Loveland and Fort Collins (gateways to Rocky Mountain Park), as well as Wyoming and Yellowstone National Park. There is frequent train service between Denver, Colorado Springs and Pueblo. Western Colorado and Utah points are reached by the D&RGW RR via either the Moffat Tunnel or the Royal Gorge routes.

Connecting Denver, Colorado Springs and Pueblo with Texas and the Gulf Coast are Burlington Lines luxurious, diesel-powered, stainless steel Texas Zephyrs. Each train includes a full-length observation-lounge car; sleeping cars with sections, roomettes, bedrooms, compartments, and drawing rooms; exquisite dining car. The chair coaches are fully carpeted, with reclining seats for restful day and night travel, as well as lovely dressing rooms for the ladies. Refreshment service and famous Burlington meals may be enjoyed. The interior of the entire train is pleasingly decorated, and the accommodations and appointments are of the same high standard set for the illustrious Burlington Zephyr family. Best of all, there is no extra fare.



The Texas Zephyr provides fast, luxurious travel between Colorado and Texas points. It leaves Denver at 1:00 P.M., and arrives Fort Worth and Dallas early next morning, with direct connections to Houston. Northbound, departure from Houston is in the morning, with Texas Zephyr departure from Dallas and Fort Worth shortly after noon, and early morning arrival at Pueblo, Colorado Springs, and Denver.

Colorado is a Winter Sports paradise.

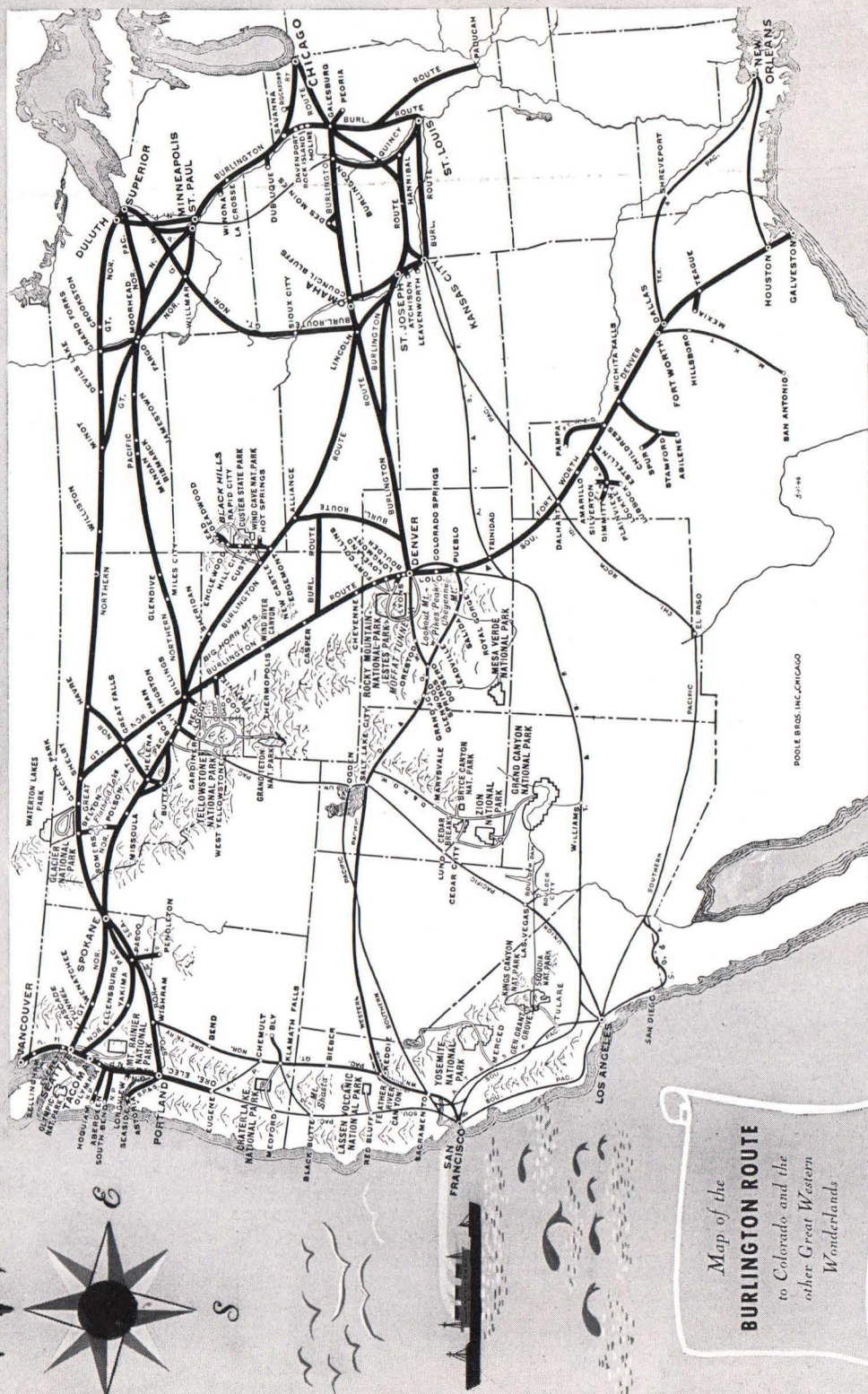
*The world's longest chair lift, located at Aspen.*

*Abundant powder snow makes for perfect skiing at Aspen.*





# Burlington Travel Bureaus



Map of the  
**BURLINGTON ROUTE**  
to Colorado and the  
other Great Western  
Wonderlands

ABILENE, TEX.  
AMARILLO, TEX.  
ATCHISON, KAN.  
ATLANTA 3, GA.  
BIRMINGHAM 3, ALA.  
BOSTON 16, MASS.  
BURLINGTON, IOWA  
CHEYENNE, WYO.  
CHICAGO 3, ILL.  
CINCINNATI 2, OHIO  
CLEVELAND 13, OHIO  
CLINTON, IOWA  
COLORADO SPRINGS, COLO.  
COUNCIL BLUFFS, IOWA  
DALLAS 2, TEXAS  
DAVENPORT, IOWA  
DENVER 2, COLO.

DES MOINES 9, IOWA  
DETROIT 26, MICH.  
EUGENE, ORE.  
FORT WORTH 2, TEX.  
GALESBURG, ILL.  
HASTINGS, NEB.  
HOUSTON 2, TEX.  
INDIANAPOLIS 4, IND.  
KANSAS CITY 5, MO.  
LEAVENWORTH, KAN.  
LINCOLN 8, NEB.  
LOS ANGELES 14, CAL.  
LUBBOCK, TEX.  
MEMPHIS 3, TENN.  
MILWAUKEE 3, WIS.  
MINNEAPOLIS 2, MINN.  
MOBILE 13, ALA.  
NEW ORLEANS 12, LA.  
NEW YORK 36, N.Y.  
OAKLAND 12, CAL.  
OKLAHOMA CITY 2, OKLA.  
OMAHA 2, NEB.  
PEORIA 2, ILL.  
PHILADELPHIA 9, PA.  
PITTSBURGH 19, PA.  
PORTLAND 4, ORE.  
PUEBLO, COLO.  
QUINCY, ILL.  
ROCK ISLAND, ILL.  
SALT LAKE CITY 1, UTAH  
SAN ANTONIO 5, TEX.  
SAN FRANCISCO 5, CAL.  
SEATTLE 1, WASH.  
SIOUX CITY 1, IOWA  
SPOKANE 2, WASH.  
ST. JOSEPH 2, MO.  
ST. LOUIS 1, MO.  
ST. PAUL 2, MINN.

TACOMA 2, WASH.  
TAMPA, FLA.  
TORONTO 1, ONT.  
TULSA 3, OKLA.  
VANCOUVER 1, B.C.  
WASHINGTON 5, D.C.  
WICHITA FALLS, TEX.  
WINNIPEG 2, MAN.  
WINSTON-SALEM 1, N.C.

H. C. WALLACE  
Passenger Traffic Manager  
547 W. Jackson Blvd., Chicago 6, Ill.

189 Locust St.  
F. W. & D. Station  
Second and Main Sts.  
Rm. 914, 101 Marietta St. Bldg.  
1310-14 Brown-Marx Bldg.  
80 Boylston St.  
Burlington Station  
210 Majestic Bldg.  
Adams at Clark St.  
505 Dixie Terminal Bldg.  
1033 Terminal Tower  
404 Wilson Bldg.  
22 E. Colorado Ave.  
Burlington Station  
1305 Commerce St.  
Union Station  
17th & Champa  
17th & Champa  
411 Savings & Loan Bldg.  
709-710 Lafayette Bldg.  
1170 Pearl St.  
701 Fort Worth Club Bldg.  
Burlington Station  
Burlington Station  
303 Union Station Bldg.  
910 Merchants Bk. Bldg.  
114 W. 11th St.  
700 Choctaw St.  
Burlington Station  
510 W. 6th St.  
222-34th St.  
1026 Exchange Bldg.  
231 W. Wisconsin Ave.  
90 South 7th St.  
603 First Nat'l Bank Bldg.  
1209 Nat'l Bk. of Commerce Bldg.  
500 Fifth Ave.  
512 Central Bldg.  
615 Colcord Bldg.  
1614 Farnam St.  
301 S. Jefferson Ave.  
123 S. Broad St.  
2620 Koppers Bldg.  
911 Equitable Bldg.  
Union Depot.  
400 Maine St.  
Burlington Station  
1009 Kearns Bldg.  
418 Gunter Bldg.  
999 Monadnock Bldg.  
418 White Bldg.  
415 Benson Bldg.  
1031 Old Nat'l Bank Bldg.  
428 Francis St.  
625 Frisco Bldg.  
Wabasha at 4th St.  
Wabasha at 4th St.  
700 Tacoma Bldg.  
26 Western Union Bldg.  
706 Royal Bank Bldg.  
606-607 Daniel Bldg.  
1626 Marine Bldg.  
425 Shoreham Bldg.  
506 Seventh St.  
701 Childs Bldg.  
429 Reynolds Bldg. (P.O. Box 2320)

C. W. PLAGEMANN  
General Passenger Agent  
1004 Farnam St., Omaha 2, Neb.

A. E. DRAKE, Gen'l. Agt.  
A. D. DODGE, Gen'l. Agt.  
G. A. TAUCHMAN, Com'l. Agt.  
C. C. RIFFE, Gen'l. Agt.  
A. H. LAWSON, Gen'l. Agt.  
R. E. HALLORAN, Gen'l. Agt.  
J. C. HARKNESS, D. P. A.  
W. B. LYONS, Gen'l. Agt.  
F. D. CLOUSE, Gen'l. Agt.  
A. W. LINDBERG, Gen'l. Agt.  
C. C. SHUMANN, Gen'l. Agt.  
H. L. SHERMAN JR., Com'l. Agt.  
PAUL L. GETCHELL, Gen'l. Agt.  
C. L. ESHELMAN, Agent  
S. M. GRAHAM, Gen'l. Agt.  
R. A. HESS, Com'l. Agt.  
M. MODGLIN, Gen'l. Pgr. Agt.  
C. D. FLETCHER, Gen'l. Agt.  
G. A. MEIER, Gen'l. Agt.  
L. M. JONES, Gen'l. Agt.  
W. W. SHOTT, Com'l. Agt.  
R. H. DINKINS, D.P.A.  
F. S. CARLSON, D.P.A.  
BERT VICKERY, JR., D.P.A.  
R. R. LUDDECKE, JR., Gen'l. Agt.  
J. E. KINDT, Gen'l. Agt.  
R. S. CAIRD, Gen'l. Agt.  
I. H. FEZOR, Com'l. Agt.  
W. T. ALBRECHT, Gen'l. Agt.  
L. E. GABRIELSON, Gen'l. Agt.  
W. M. MULLEN, Gen'l. Agt.  
R. M. LAWRENCE, Gen'l. Agt.  
D. W. HUBERT, Gen'l. Agt.  
S. T. THOMAS, Gen'l. Agt.  
E. J. WEISKOPF, Com'l. Agt.  
M. H. MCCROSSEN, Gen'l. Agt.  
J. E. McNAMARA, Gen'l. Agt.  
T. C. ROWLEY, Com'l. Agt.  
R. L. STEVENSON, Gen'l. Agt.  
F. J. SWIRGIN, Gen'l. Agt.  
H. F. WILLIS, Gen'l. Agt.  
A. M. DUPONT, Gen'l. Agt.  
C. O. WARRELL, Gen'l. Agt.  
R. J. LUCAS, Gen'l. Agt.  
G. G. CLUTTER, Gen'l. Agt.  
F. O. ESCHENBRENNER, D.P.A.  
G. R. STEPHENS, Tkt. Agt.  
H. J. WALTHER, Gen'l. Agt.  
J. K. LAMB, Gen'l. Agt.  
O. K. LUCAS, Gen'l. Agt.  
L. G. MCCUBBIN, Gen'l. Agt.  
F. A. JENNER, Gen'l. Agt.  
S. J. SIENKO, Gen'l. Agt.  
G. F. BRIDGES, D.P.A.  
C. B. BAIRD, C.P.A.  
C. E. BIRDSALL, A.G.P.A.  
W. C. SCHMIDT, Gen'l. Agt.  
R. E. BIBBER, Com'l. Agt.  
J. W. GRADY, Gen'l. Agt.  
FRANK WALL, Gen'l. Agt.  
A. G. HAMMOND, JR., Gen'l. Agt.  
D. W. J. BEHAN, Com'l. Agt.  
W. G. SHISLER, Gen'l. Agt.  
T. K. SUMMERS, Gen'l. Agt.  
H. G. MCQUADE, Gen'l. Agt.  
R. F. MORSE, T.P.A.

W. F. BURKE  
General Passenger Traffic Manager  
547 W. Jackson Blvd., Chicago 6, Ill.