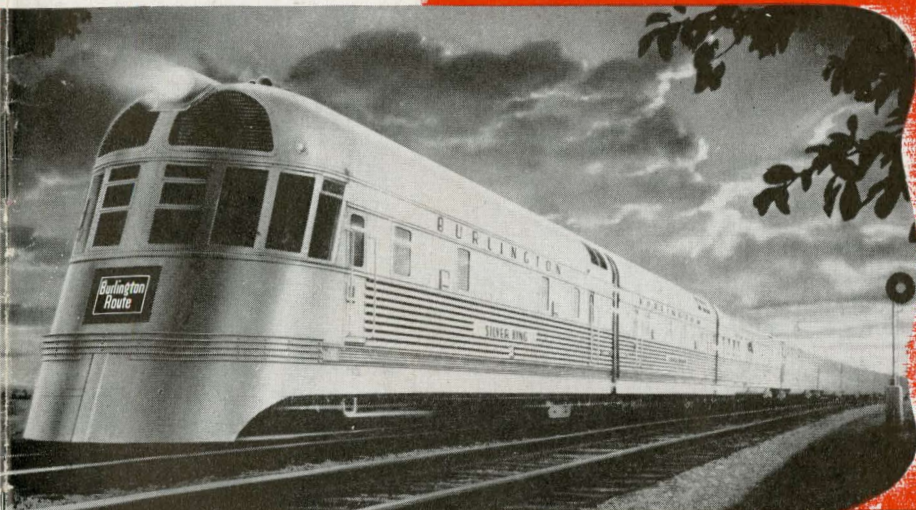
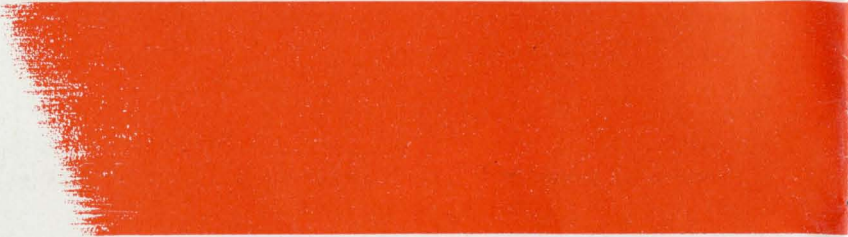


OVERNIGHT • EVERYNIGHT




*Burlington's* **DENVER ZEPHYR**

BETWEEN CHICAGO AND DENVER



A TRAVEL TRIUMPH OF *Beauty, Comfort, Convenience . . . .*



- There's a thrill in train travel for you . . . every time you ride the Burlington's Denver Zephyr! mention reflected in wider seats and berths, and greater all-around roominess.

These beautiful, stainless steel, streamlined trains were built especially for overnight service between Chicago and Denver. Complete air-conditioning, double-width, full-view windows, tightlock couplers which eliminate slack between cars, and a host of modern mechanical and

Engineering genius, modern craftsmanship and inspired decorative art are harmonized from the streamlined prow of the first mighty power car through structural features combine to insure perfection of travel.

sprightly cocktail lounge, three perfectly-appointed did trains bear definite hallmarks of quality and dependability. These markings are evident, not only in coaches, colorful dining car and five restful sleeping cars, to the gracefully tapered stern of the delightful their design, interior treatment and appointments, but parlor observation-lounge. also in the distinctive names of the cars themselves. Each

Innovations in passenger comfort are as gratifying as the Denver Zephyr's speedy schedules between the car name begins with the word "Silver," partly because of its gleaming exterior and also in honor of Colorado, the great Silver State.

Great Lakes and the Rockies . . . more than 1,000 miles, just overnight.\* Gay, colorful interiors capture the spirit of the train's flashing speed.

Space-conserving design has created cars wider inside than conventional equipment, an increased di-

\*In October, 1936, one of the Denver Zephyrs set a world's record for a long-distance non-stop run Chicago to Denver at an average speed of more than 83 miles per hour.





## *Ease and Elegance* IN THE PARLOR LOUNGE

• The delightful parlor-lounge car at the rear of each train and immediately following the sleeping cars, furnishes a cordial lounging place for Pullman passengers. Without question, this is one of the most elegant cars in the entire train . . . a masterpiece of the decorator's art.

A glass partition divides the car into two sections. To the rear is a lovely solarium-lounge with card-playing nook and a grouping of brightly-colored, movable settees and easy chairs encircling the gracefully-rounded end.

A refreshment bar is located "amidships." At the bar is a telephone connection with the dining car, over which table reservations can be made.

The forward half is the parlor car section in which are ten fawn-colored easy chairs, a writing desk and nook for card-playing.

Reds and browns predominate in carpets, upholstery and walls. Bright, white-striped rose drapes radiate further cheerfulness and cordiality. Double-width windows, extending around both sides and the rear, reveal an unobstructed panorama of the ever-changing countryside.

Soft radio music adds charm to the cozy atmosphere while an electric clock silently marks the swift passage of minutes and miles.

The car accommodates 41 passengers.

Names of Cars: Silver Flash, Silver Streak.





## *Pleasant Relaxation..* REFRESHING SLEEP

Fine living and fast travel go hand-in-hand on the Denver Zephyr. There is a spaciousness and diversity of accommodations that encourages friendly conversation, discriminate wining, select dining, restful "lazing" and refreshing repose.

Sleeping accommodations on the Denver Zephyr are unusually complete and luxurious. Each of the two trains carries five sleeping cars . . . two all-room cars and three 12-section sleepers.

Especially distinctive are the two all-room cars, one of which is sketched below and illustrated at the left. Accommodations include four roomettes, four chambrettes (single bedrooms), ten double bedrooms, four





compartments and two drawing-rooms. These are so designed that various en-suite combinations can be arranged, by means of sliding partitions, for families or friends traveling together.

Each room is individually decorated and equipped with private toilet facilities, illuminated electric clock, individual temperature control and 110-volt outlet for passengers' personal electrical appliances.

Names of Cars: Silver Threads, Silver Sides,  
Silver Slipper, Silver Moon.

Each of the three 12-section sleeping cars have been attractively decorated with individual color schemes. Berths are extra-long and extra-wide, four sections being 6 feet 8 inches long, "tailor-made" for the comfort

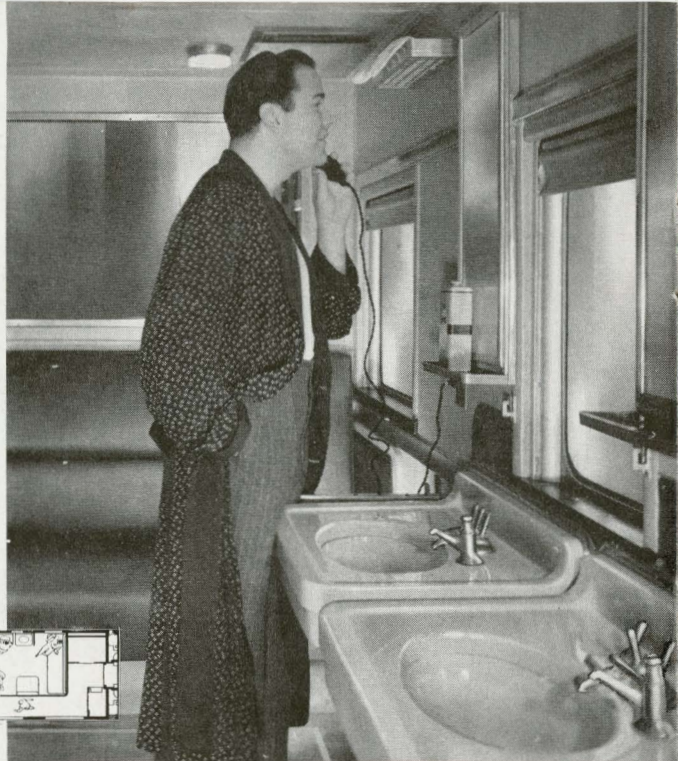


and convenience of the exceptionally tall traveler. Dressing rooms are distinctively designed, well appointed, commodious and are likewise equipped with 110-volt outlets for personal electrical appliances.

The men's dressing rooms are each equipped with four wash basins, a dental basin, and a sofa. The women's compartments each have three wash basins a dental basin, wide dressing table and mirror and three chairs.

Typical of the conveniences embodied in the Pullman sleeping cars are cushion rubber mattresses, so soft and resilient they mold to every body position . . . individual air-conditioning inlets in all berths and dim blue "night" lights in lower berths.

**Names of Cars: Silver Arrow, Silver Screen, Silver Skates, Silver State, Silver Tip, Silver Tone.**





## *Mealtimes on the Zephyr* **ARE FEAST-IVE OCCASIONS**

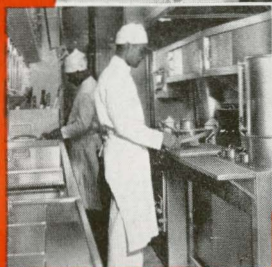
In pace with the Zephyr's fleetness and beauty is the savory cuisine aboard.

Modern design and a soft pastel color scheme find full expression in the 40-place dining car. Gleaming silverware, sparkling crystal, snow-white linens, flowers at each table, Venetian blinds and drapes give distinction and accentuate the gaiety of color.

An "air curtain" at the entrance to the chef's pantry, keeps kitchen heat and aromas from the dining room.

The kitchens are marvels of compact efficiency. From these scientific culinary workshops emerge the piping hot or crispy cold courses that make Burlington's a la carte and table d'hote meals the delight of travelers.

**Names of Cars: Silver Grill, Silver Service.**





## *Spaciousness and Comfort* DISTINGUISH THE COACHES

Just as Zephyr trains have set a new pace in sleek design, so they have set new standards in comfort and convenience.

This is outstandingly apparent in the three beautiful coaches of each of the Denver Zephyrs . . . coaches with floors richly and fully carpeted, scientific lighting and harmonious coloring, ample and perfectly-appointed dressing rooms.

The coach directly ahead of the dining car seats 38 passengers and is decorated in soft, warm shades of red and tan. Seats can be tilted to three comfortable angles and there is a radio to add music to the pleasures of traveling.



The spacious women's dressing room is bright and dainty with its robin's egg blue wash basins, cream colored leather chairs and sofa, and mirror extending almost the full width of the compartment. Two dressing rooms afford ample toilette facilities for men passengers.

The second coach, in which green and complementary shades are blended in delightful effect, seats 64 passengers in chairs that are adjustable to three semi-reclining positions and, likewise, can be turned to face the broad windows. Each chair in this coach has an individual ashtray.

The forward coach is softly colored in shades of blue, rust and cream. In addition to seats for 48 passengers, it contains an attractive dinette with seating capacity for 16 passengers.





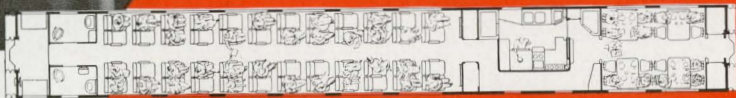


The dinette section of this coach, illustrated at the left, has its own stainless steel kitchen where moderately-priced breakfasts and dinners are prepared. Coach passengers may use the spacious diner, if they desire.

Coach chairs are a revelation in comfort. Cushions are constructed of a resilient, porous rubber and chair arms are generously upholstered. There are soft pillows in immaculate white slips for the overnight traveler and lights are dimmed during sleeping hours. Special luggage compartments are provided in all of the coaches for passengers' heavy baggage, leaving under-seat space and the overhead racks for small bags, parcels and wraps.

Every coach seat on the Denver Zephyr is designated by number and individually assigned at the time tickets are purchased. There is no extra fare.

Names of Cars: Silver Beam, Silver Bell, Silver City,  
Silver Lake, Silver Plume, Silver Spruce.



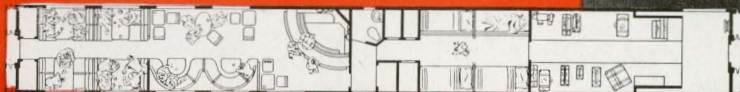
## *The Cosmopolitan* COCKTAIL LOUNGE

The Denver Zephyr, like a fine club or hotel, is notable for the distinctive diversifications it affords. Popular among these is the gay, cosmopolitan cocktail lounge, where passengers from all parts of the train gather in smart and convivial surroundings.

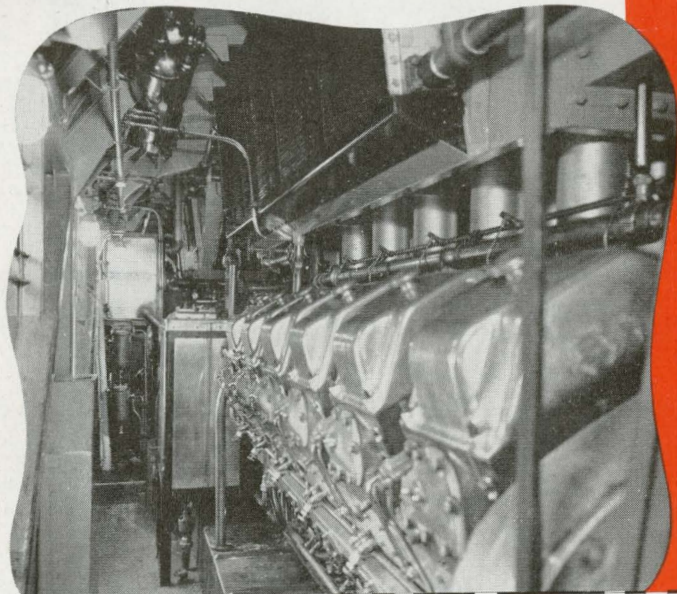
A quarter-circle bar, with a sparkling back bar encompassing an illuminated etched glass mirror, occupies the forward end of the lounge. Intimate half-moon sofas and modernly designed leather covered chairs provide sociable seating arrangements. Green Venetian blinds cover the broad windows.

An artistic metal grille separates the lounge proper from the annex. A telephone connection with the diner facilitates the making of table reservations. A radio supplies musical background for this gay rendezvous.

Names of Cars: Silver Bar, Silver Lining.







## RUGGED POWER

## ...Velvet Speed

The Denver Zephyr is propelled by electric power, generated by three V-type, 2-cycle oil-burning Diesel engines, developing a total of 3,000 horsepower. Each of these units may be operated independently of the others and any one can be shut down for maintenance or repair without interrupting the operation of the train.

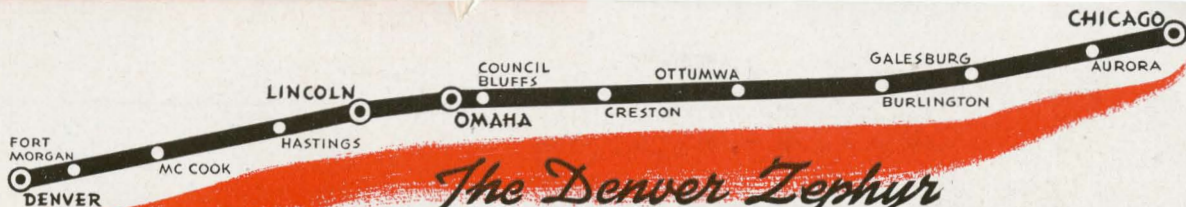
Names of Cars: Silver King, Silver Queen, Silver Knight, Silver Princess.

In the third car is an auxiliary Diesel-electric power plant which operates the air-conditioning and lighting systems. Because this plant is independent of the traction power generators, lights burn with equal brilliance at all times and the air-conditioning can be maintained at a constant temperature. These cars also contain a Railway Post Office, hence the

Names of Cars: Silver Courier, Silver Herald.







# *The Denver Zephyr*

## OVERNIGHT, EVERYNIGHT, BETWEEN CHICAGO AND DENVER

The Denver Zephyrs run between Chicago and Denver in just overnight. Westbound they span 1,034 miles in 16 hours; eastbound 1,039 miles in 15 hours, 35 minutes. The Denver Zephyrs have achieved one of the most amazing on-time performance records in railroad history.

**A. COTSWORTH, JR., Passenger Traffic Manager**  
547 W. Jackson Blvd., Chicago, Ill.

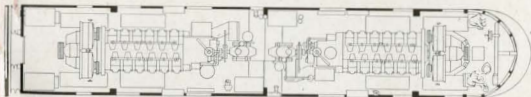
**W. M. MOLONEY, General Agent, Passenger Dept.**  
101 W. Adams (at Clark) St., Chicago, Ill.

**F. W. JOHNSON, General Passenger Agent**  
17th & Champa St., Denver, Colo.

### DAILY SCHEDULE—Corrected to May 1, 1948

Westbound—Read Down		Eastbound—Read Up	
5:30 PM	Lv. . . . . Chicago (CST) . . . . .	Ar. . . . .	8:35 AM
X 6:04 PM	Lv. . . . . Aurora . . . . .	Ar. . . . .	M 7:55 AM
7:42 PM	Lv. . . . . Galesburg . . . . .	Ar. . . . .	6:16 AM
8:24 PM	Lv. . . . . Burlington . . . . .	Ar. . . . .	5:33 AM
9:32 PM	Lv. . . . . Ottumwa . . . . .	Ar. . . . .	4:21 AM
11:22 PM	Lv. . . . . Creston . . . . .	Ar. . . . .	2:35 AM
A 12:48 AM	Ar. . . . . Council Bluffs . . . . .		
1:10 AM	Ar. . . . . Omaha . . . . .	Lv. . . . .	12:45 AM
2:12 AM	Ar. . . . . Lincoln . . . . .	Lv. . . . .	11:43 PM
3:44 AM	Ar. . . . . Hastings . . . . .	Lv. . . . .	10:16 PM
S 4:30 AM	Ar. . . . . Holdrege . . . . .		
5:38 AM	Ar. . . . . McCook (CST) . . . . .	Lv. . . . .	8:25 PM
7:15 AM	Ar. . . . . Fort Morgan . . . . .	Lv. . . . .	C 4:59 PM
8:30 AM	Ar. . . . . Denver (MT) . . . . .	Lv. . . . .	4:00 PM

- X—Stops to receive revenue passengers for Omaha or beyond.
- A—Stops to let off revenue passengers from Chicago or to receive for Denver when notified at Creston.
- M—Stops to let off revenue passengers from Denver.
- S—Stops to let off revenue passengers from Burlington or beyond and to receive revenue passengers for Denver.
- C—Stops to receive revenue passengers for Lincoln and east when notified at Denver.



---

**Burlington  
Route**

