

THE PERFECT VACATIONLAND

Colorado

Burlington
Route



Burlington
Route

THE VACATION ROUTE TO COLORADO





Index

	Page		Page
Colorado—Glorious Playground of the Rockies.....	1	List of Hotels and Resorts: Typical Vacation Places.....	38-39
Denver—the Mountain Gateway..	10	Estes Park Region.....	41
Rocky Mountain National and Estes Park.....	14	Denver Hotels.....	41
Boulder-Glacier Region.....	22	Colorado Springs Hotels.....	41
Colorado Springs and the Pikes Peak Region.....	25	Pueblo Hotels.....	41
Map of Colorado State.....	28-29	Dude and Guest Ranches.....	42-43
Pueblo and Royal Gorge.....	30	Boys' and Girls' Camps.....	44-45
Mesa Verde National Park and Western Colorado.....	32	Colorado General List.....	46-51
Dude and Guest Ranches.....	34	Burlington's Colorado Service ..	52-54
Boys' and Girls' Camps.....	36	Burlington Representatives and Travel Bureaus.....	55
		Map of Burlington Route.....	56

Colorado

GLORIOUS PLAYGROUND OF THE ROCKIES

Man could not ask nor Nature conceive a more glorious vacationland than Colorado. Within the boundaries of this great state lies a vast region that for sheer mountain beauty, exhilarating climate, and wealth of scenic wonders surpasses anything to be found on the American continent.

Wild broken mountain masses rear their heights in snowy solitude... majestic, everlasting, never tiring to the eye. Down their precipitous slopes move ponderous glaciers, still carving their inexorable way toward the valleys below. Tumbling mountain streams, gem-like lakes, deep virgin forests, mysterious sand dunes, prehistoric ruins, old mining camps, radio-active hot springs, and many other delightful manifestations of Nature present an almost endless array of outdoor attractions.

Here are the deepest canyons in the world through which a railroad runs... the highest summits in the world attained by the "iron horse"... the highest yacht anchorage in the world. The highest skyline drive in the world crosses the Colorado Rockies, and the highest auto highways in the world ascend Mt. Evans and Pikes Peak, with scenes of breathtaking beauty all the way. Here is a country of endless, magnificent panoramas and grandeur

that transcends the imagination; of superlatives dwarfed by reality. And over it all, the mountains—always the glorious mountains.

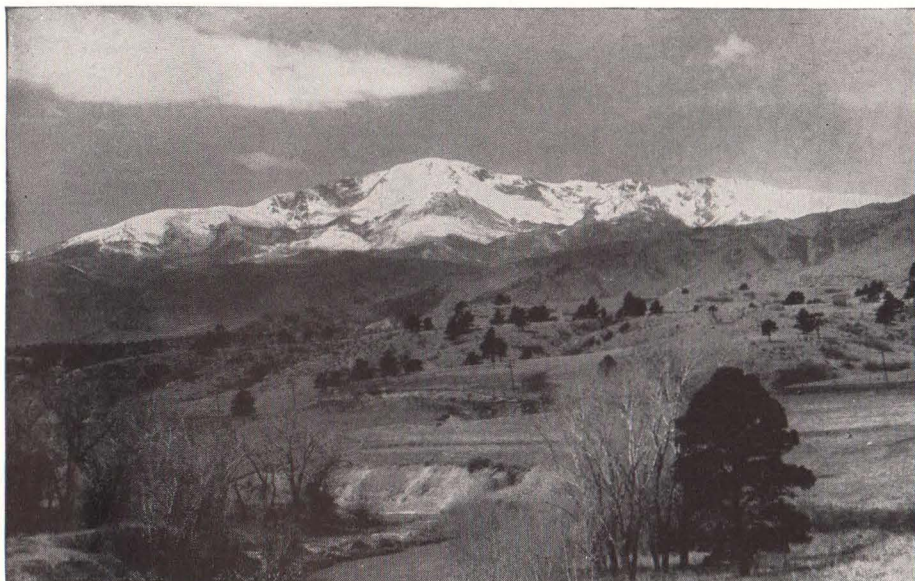
A Mountainland Surpassing Switzerland

Colorado contains the greatest extent and widest variety of mountain scenery to be found anywhere in the country. The average elevation is 6800 feet above sea level... greater than that of any other state. Here are over a thousand peaks whose craggy heads rise to an elevation of more than 10,000 feet. In fact (and this may surprise you), at least 25 Colorado peaks surpass the 14,110 feet of that famous old patriarch, Pikes Peak.

Not even vaunted Switzerland can compare with such an incontestable array of "sky sweepers." They cover an area six times as great as that of the renowned European playground. There are 50 separate mountains in this great Western vacationland that rise to an altitude of 14,000 feet or more, compared with only 9 such heights in the Swiss Alps.

"Come UP to Colorado!"

Wherever you go, whatever you do in Colorado, there is always the unforgettable, magnetic lure of the moun-



Pikes Peak, mighty "Patriarch of the Rockies," dominates the landscape near Colorado Springs.

tains. Night and day they dominate the scene, pulling you irresistibly toward the heights. Almost automatically, your eyes raise in anticipation and your feet feel the urge to travel the upland trails.

Colorado's mountains are unique in their accessibility to everyone. Nowhere in the world is mountain climbing such a universal vacation sport. All summer long, amateur mountaineers take keen delight in hiking to the summit of the many peaks that yield their heights with ease. There are, of course, many pinnacles that should be attempted only by the hardest and most expert climbers . . . and for this select fraternity there is no lack of high adventure.

Altitude Is No Deterrent

For those who have never vacationed in the higher altitudes, let it be said that elevations anywhere up to 10,000 feet should entail no difficulty in breathing. When motoring to even the highest altitudes reached by auto

roads, few visitors notice any discomfort. In the case of more strenuous activities at still higher elevations, such as hiking or horseback riding, it is always wiser of course to ascend into these rarefied atmospheres more leisurely than usual.

Almost everyone rides. Here riding is one of the most exhilarating of sports, and perfectly safe for anyone. Good saddle horses, well broken and accustomed to the mountain trails, are available at practically any village or resort you may select. Guides, too, may be had for the longer or more difficult trips.

Motoring Joys in Colorado

Perhaps you would like to spend day after glorious day motoring whither fancy dictates. Well, Colorado has hundreds of miles of splendid highways, spectacular, comfortable and safe. Most of them are wide, plainly marked and well protected, with frequent switchbacks leading easily and smoothly to the highest summits.



Fair Glacier hangs almost vertically from jagged peaks on the rim of the grim Hell Hole, in the Boulder Glacier region.



Right—Bridal Veil Falls' feathery cascade and famed Spouting Rock.



Spring in the Colorado Rockies—countless melting snow fields of the Arapahoe Peaks find their way into shimmering Long Lake.





Mirror-like lakes, teeming with mountain trout, lure the ardent fisherman in Western Colorado.

To enjoy these scenic highways to the utmost, it is neither necessary nor particularly advisable to drive one's own car over a long, hot tiresome route to Colorado. It is far more comfortable, and much faster to go in the coolness and comfort of a modern, air-conditioned Burlington train, availing oneself of motor transportation on arrival in the West.

You may rent a private car at a number of points in Colorado. The rates are reasonable and several reputable rental services are available. Many of the better known highway trips also are made by modern motor buses operating on regular schedules from such points as Denver, Boulder, Fort Collins, Colorado Springs, Pueblo and Canon City.

Glorious National Forests

If your idea of a perfect vacation is to shun the beaten paths and "rough it," nowhere will you find better facilities or more ideal surroundings. Bring your own duffle or depend on local experienced outfitters to provide the necessary equipment . . . guides also if you particularly dislike camp chores. Seventeen national forests, with millions of acres of splendid timberland, lakes and streams, are open to hiker, horseman and camper alike. As a matter of fact, all summer long the entire

state is one vast camping ground where young and old find happiness and new zest for living, each in his own way.

A Skier's Paradise

To the winter sports enthusiast, Colorado is an unbelievable combination of everything needed for full enjoy-



ment. First and most amazing is the snow itself. For Colorado's climate and altitude provide ideal snow conditions from early fall until May—often affording the thrilling opportunity of skiing in lightweight clothing.

Smooth, open slopes invite skiers to a score of locations throughout the state, and almost all furnish a variety of sport for both the expert and the novice, as well as the average skier.

Ski resorts with instructors, lodges, and tows, abound in the state. Among the skiing centers are Winter Park, Aspen, Glenwood Springs, Steamboat Springs, Berthoud Pass, and Loveland

Pass, as well as Hot Sulphur Springs, and Gunnison.

Colorado is truly every man's Vacationland . . . big enough for all without crowding, compact enough for anyone to get around easily and quickly. Those who travel on a limited budget will find just as much opportunity for recreation and pleasure as those to whom expense is no consideration. Nature's generous hand holds the key to worthwhile living for everyone, to summer joys you will long remember, to gorgeous everlasting landscapes by the Master Artist.

There are hosts of places offering all manner of hot and cold curative springs. These springs are well scattered throughout practically every section of the state and are unusually accessible. Thousands of people come to Colorado annually to enjoy these health-giving baths, many of which are highly radio-active and of considerable medicinal value. The combination of the curative waters and invigorating mountain air works wonders.

Around the Eastern Gateways

Northwest from Denver and Boulder

lies the wonderful region of mountains, valleys, lakes and forested slopes in and around Rocky Mountain National Park—one of two great national parks included in Colorado's far-flung boundaries. This vast area is a glorious mountain garden, one of the most popular of all the Western vacationlands. South of the park, continuing along both sides of the backbone of the Rockies, is the wild, precipitous Boulder-Glacier region of peaks, gorges and ice fields . . . famous among geologists. Nearby are a number of fascinating "ghost" towns which figured so prominently in Colorado's early romantic gold mining days still redolent of those historic, turbulent times.

Colorado Springs is the focal point for excursions into the innumerable reaches of that famous scenic region which includes Pikes Peak, Manitou and Garden of the Gods. Here also are located a large group of curative mineral springs. Farther south lies Pueblo, an important industrial city and one of the principal gateways to San Isabel National Forest and the playgrounds of Western Colorado.

The grotesquely eroded spires of Wheeler National Monument southwestern Colorado.





*Snow-clad peaks, deep green forest and shining lake waters—
Denver Mountain Parks.*



*A prehistoric watch tower of the cliff dwellers . . . Mesa Verde
National Park, southwestern Colorado.*

Western Colorado

While perhaps not as well known as other recreation regions in the state, the seemingly limitless section of Western Colorado is infinitely varied in its terrain and scenic wonders. There are great mountain masses such as the Sangre de Cristo, San Miguel, San Juan, Gore and Park ranges . . . Uncompahgre, Cochetopa, Montezuma, Arapahoe, and Holy Cross national forests . . . Colorado's famous mining districts of Leadville (at an altitude well over 10,000 feet), Ouray, Silverton and Telluride . . . Grand Mesa, a wonderful flat top mountain raised by some prank of nature . . . hundreds of hot mineral springs.

In the far Southwest corner lies Mesa Verde National Park, a strange land of age-old mystery, containing the relics of a long-forgotten civilization and well preserved ruins of a race of cliff dwellers who are still a puzzle to the historians. Nearby is the Yucca House National Monument, another place of prehistoric ruins.

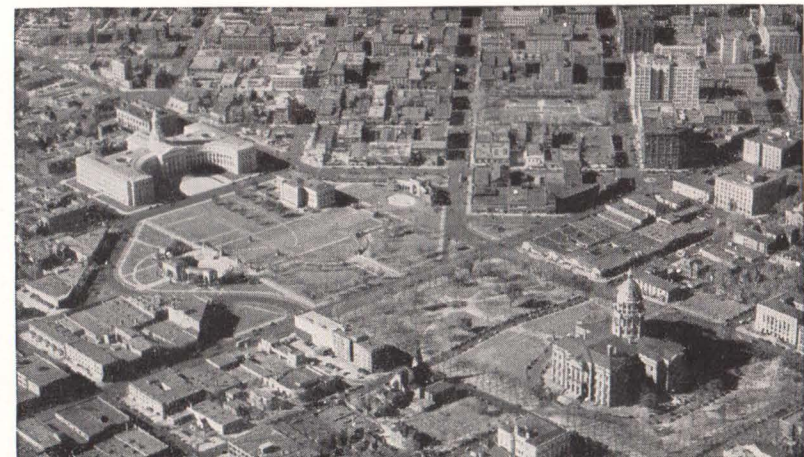
Western Colorado contains five other

national monuments—areas set aside by the U. S. Government to perpetuate unique natural phenomena. There is the Colorado National Monument near Grand Junction; Wheeler, near Creede; Great Sand Dunes, near Alamosa; Holy Cross, near Redcliff; and the famed Black Canyon of the Gunnison River, near Montrose. Each of these places has some special, inimitable charm of its own.

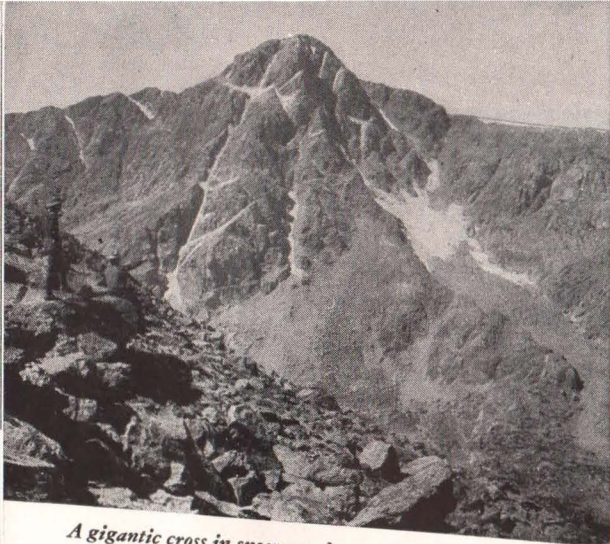
Colorado's wonderful climate is in perfect complement to the sights you see, the things you do, and the places you choose to visit. The crisp, dry air, almost crystalline in its purity, invigorates both mind and body. It gives one new health and strength, sweeps away the cobwebs from a brain slowed down by the struggle and tumult of this workaday world. Normal perspective returns full force, true values reappear in their proper light, and life seems much more worth while.

A Land You'll Never Forget

Who could forget the enthralling vision of mountain peaks at sunset? Who so calloused as would not breathe



*Aerial view of Denver, the "Mile High City,"
showing the golden-domed State Capitol at lower right.*



A gigantic cross in snow reaches to the 13,978 foot tip of the Mount of the Holy Cross.



Lovely Hanging Lake, a renowned beauty spot in the vast vacationland of Western Colorado.



As an artist might paint a Colorado Summer . . . a bridle path lined with quaking aspen, leading to the mountains.



A Thrilling pause along the Trail Ridge Road, splendid motor highway through the heart of Rocky Mountain National Park.

more deeply to see, from some hard-won summit, the wilderness world far far beneath? How erase from memory the vision of a wild and silent ice-fed lake, mirroring the brooding mountains and the sky's inconceivable blue? Everything you do or see impresses itself on your memory as treasured incidents in a perfect vacation.

The smell of wood smoke drifting through the pine trees is like some rare and heady perfume in the crisp clean air. Long after you have left the Rockies, you will remember the sweet aroma with a strong nostalgic longing. It will take you back to the glorious Skylands of Colorado . . . to a land almost too beautiful for reality, yet always ready and waiting for you.

Some night at home far away, you will see in the leaping flames of your fireplace the outline of majestic peaks silhouetted against a flaming sky. Wind from the mountain heights will ring once more in your ears and the smell of the burning logs on your hearth will carry you back to radiant summer days in the mountains. Remembering the thrill of it all you will

say, echoing the thoughts of thousands of other visitors to this mile-high wilderness: "I'm homesick for Colorado, and I'm going back again!"

Well, why not go *this* year?

Colorado is "yours for the asking"—now more easily, quickly and comfortably reached than ever before. Just overnight from sunstroke and sticky heat, you will find quick relief from the severity of any American summer . . . warm, pleasant days and cool, starry nights—a combination that has made Colorado famous—the world over. Summer and spring are one and the same season . . . summer by day, and wonderful spring by night.

On the Burlington's fleet of air-conditioned trains, your vacation begins when you step aboard. Whether you take the famous stainless-steel Denver Zephyr, or the Exposition Flyer from Chicago—or use Burlington's convenient service from St. Louis or Kansas City or ride the Texas Zephyr from the Lone Star State—you'll find rest and relaxation that will add hours of enjoyment to your vacation.

The Mountain Gateway-DENVER



One of the many beautiful city parks in Denver.

DENVER, the "Mile High Queen City of the Rockies," is the logical gateway to Colorado's endless display of wonders and fascinations. It is the portal to 12 national parks and 32 national monuments in the vast Western Wonderland. This thoroughly modern city is known throughout the country as a genial host experienced in catering to the needs and desires of a great multitude of visitors who annually make the city their permanent or temporary headquarters for Colorado vacations.

The Mountains Call

There is an exhilarating sense of freedom about Denver that sets it apart from other cities of a third of a million people. You feel it the moment you step off a Burlington train. Perhaps it is the constant sight of the glorious mountains, only twelve miles away, for wherever you go there is a grand

view of the Snowy Range, from Long's Peak to Pikes Peak.

The city has a remarkable climate—dry, crystalline, never very hot in summer nor severely cold in winter. Days are bright with sunshine, but never humid or oppressive; the crisp nights invite blankets. Denver's altitude is exactly one mile (5280 feet), and the health-giving mountain ozone works wonders on the constitution. The "two-weeks vacationer" gets more tonical benefit at a lower comparative cost than in almost any summer region accessible in a limited time.

Little wonder, then, why Denver is today an inviting summer convention city. It is just a short distance from lofty mountains, mighty glaciers, wilderness lakes, sparkling streams that teem with trout, great forests, historic places, and peaceful valleys where every hour is a joyful experience in

living. Broad smooth highways grid-iron the lower levels, while the higher country is fretted with trails for hiker and horseman. Rail and bus lines operate from Denver to most of the more popular sections of the state.

A City of Beauty

Visitors to Colorado are deeply impressed with the beauty of this western metropolis, its impressive array of attractions. There are 44 city parks, two municipal bathing beaches, golf courses, tennis courts and many civic buildings which merit inspection. One of the most imposing structures is the State Capitol with its gold-encrusted dome . . . an architectural detail peculiarly appropriate. It was the discovery of gold in 1859, at Idaho Springs 40

miles away, that gave the impetus to Denver's rapid growth.

Other outstanding edifices include the State Museum . . . the United States Mint . . . Colorado Museum of Natural History, and the famous Civic Center, featuring a great open-air Greek Theater seating 5000, where concerts are held weekly throughout the summer.

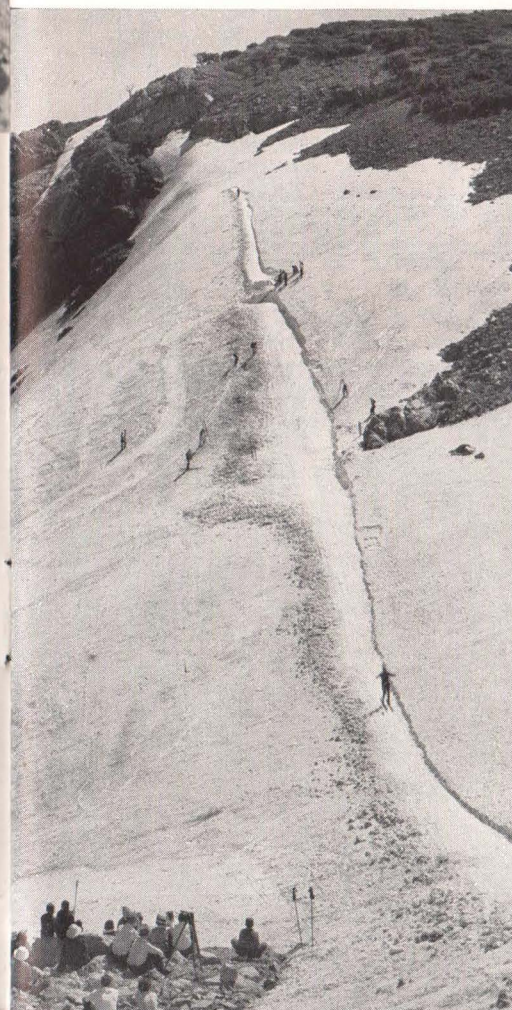
Outstanding among Denver's numerous outdoor lures are the renowned Denver Mountain Parks . . . the most unique, municipal-owned scenic region in the world. Over two score separate areas, covering approximately 150 square miles of healthful playground, are included in this park system, connected by over 100 miles of fine highway.

Glorious Motor Trips

Reached by automobile in an hour or less, over splendidly scenic highways, are all manner of delightful summer hotels, resorts, cottages and camping spots. It would be difficult to imagine a more easily accessible or diversified vacation area than these mountain parks, offering fascinating motor trips practically all year 'round.

One of the most wonderful trips encircles the major portion of the entire park system, yet can be made in just one day. After leaving Golden, it ascends the serpentine Lariat Trail to Lookout Mountain which, in truth, "looks out" over the surrounding plains. Here is the grave of "Buffalo Bill" Cody, and in Pahaska Tepee Museum close by are many relics collected by him during his glamorous life. At Genesee Park the road spirals up to the top of Genesee Mountain, then continues on through Bergen Park to Clear Creek and Idaho Springs of early gold mining fame.

Turning south to follow Chicago Creek, the route takes a thrilling as-



Skiing in midsummer! . . . on a glaciated slope in the Denver Mountain Parks.



Along the Moffat Tunnel route in Colorado.

cent to Echo Lake, thence over the world's highest mountain highway to the crest of Mount Evans (14,260 feet) for a mighty view of jagged peaks extending for 100 miles. The return route is equally delightful . . . via Troutdale, Evergreen, through Bear Creek Canyon to Morrison, where many a dinosaur's bones have been excavated; then north through Red

Rocks Park, newest of the Denver Mountain Parks.

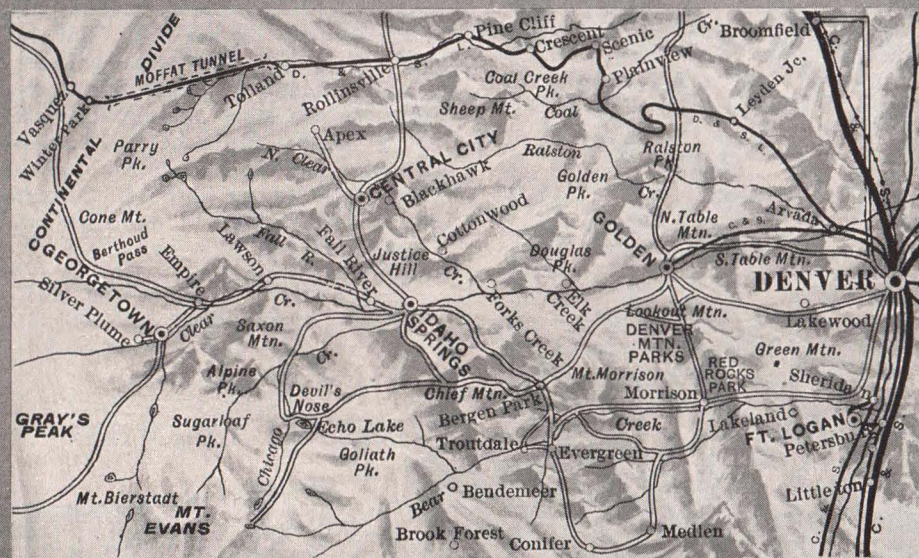
Another worthwhile trip follows Clear Creek past Idaho Springs to the old mining districts of Empire, Georgetown and Silver Plume, surrounded by towering, mine-scarred peaks. On the registers of Georgetown's once-famous hotels are the names of many a notable of the 1870's.

Equally close to Denver is another popular vacation region, the canyon of the South Platte River . . . one of the best known of Colorado's many resort sections. The mouth of the canyon is only 28 miles from the city, and for 40 miles beyond there are numerous delightful vacation places . . . hotels, furnished cottages and peaceful mountain resorts . . . on both sides of the river.

Moffat Tunnel Route

Trains operating from Denver, through the Moffat Tunnel and mighty Gore Canyon, thence over the Dotsero Cutoff along the Colorado River, give the Burlington a direct and splendidly scenic route into Western Colorado. One thinks of the Colorado River in terms of tremendous canyons, gorges and yawning chasms, and nowhere is

Map of Denver and Vicinity.



Amazing twists of Lariat Trailup Lookout Mountain to Buffalo Bill's grave.

this conception more justified than where the river runs through Gore Canyon. Mile after mile of rugged, colorful and well-nigh overpowering grandeur make this one of the greatest of chasms. The river roars white and foaming between dizzy granite precipices which tower aloft 2000 feet, for here the Rockies reveal themselves at their mightiest.

This is the stupendous Moffat Tunnel Route which has given the Burlington a direct route through Colorado to California . . . an important link in its through train service to the Pacific Coast. For 232 miles westward from Denver it penetrates the heart of the Colorado Rockies through a wilderness region which until recent years

was known only to hunter, trapper and miner. It pierces snow-capped James Peak with the 6-mile Moffat Tunnel, nearly a mile below the crest; threads the grim walls of Gore Canyon, and spans the turbulent waters of the Colorado River in the heart of Red Canyon on the Dotsero Cutoff.

Construction of the Moffat Tunnel Road, in the face of crushing odds and in spite of the almost unheard-of ruggedness of the terrain, stands as a truly remarkable engineering achievement. A trip over this western route reveals a thrilling cross-section of Colorado's Alpine grandeur, from the golden gulches of placer mining days to the high, desolate places where the snows of winter never melt.

Red Rocks Park—near Denver Colorado.



Mountain Wonderland

ROCKY MOUNTAIN NATIONAL PARK... ESTES PARK

Draw a line from Denver . . . 60 miles due northwest, or 75 by broad smooth highways. There you will find Rocky Mountain National Park, a pleasant, a thrilling, indeed a perfect vacationland.

It is a land of incomparable paradoxes, of contrasts that stir the mind to awe and wonder at Nature's miracles. Tumbling mountain streams fade into dream-like still lakes where every twig is mirrored with glassy perfection. Alpine flowers thrive at arm's

length from mighty glaciers and barren rock masses. Bitter winds whistle over the peaks, while the quaking aspen shiver gently in the warm valleys. Anything grows in the valleys . . . but above timberline, life is a constant grim struggle with the elements.

Famous Tribute

Since the early Seventies, the most renowned of the world's lovers of the high places have paid tribute to Rocky Mountain National Park. They know

it as a painter's paradise, bold, warm, colorful. Bierstadt, the great landscape artist, much of whose best work was done in the Park over sixty years ago, said that in this region were to be seen America's finest compositions for the brush. Similar tribute was paid by the English sportsman, Lord Dunraven, who visited Colorado in the Seventies and erected a hunting lodge. Since the day of Dunraven . . . and he was the Sir Thomas Lipton of his time . . . a beaten path has been trod to this great outdoor playground.

There are no poisonous plants, no harmful insects, no reptiles in the Park. In fact, there is nothing that runs, walks, crawls, growls or flies to cause man, woman or child a moment's uneasiness. Even the water tests 99 per cent pure. Strange as it may seem, the wildest creature is *man*, and all the wild life flees before him.

The National Park Service patrols the park region with well-informed and courteous rangers who are always willing to help. Ranger headquarters are maintained in Estes Park village. A system of signs and markers, trails, roads, telephones and other safeguards enables all to enjoy the country to the fullest, in safety and comfort. If ever one is lost, the wisest thing is the easiest thing . . . just walk downhill!

Like the Engadine of Switzerland, Estes Park is an upland basin or bowl,

7500 feet above sea level. (A "park," in Colorado, designates a mountain meadow or valley.) Rocky Mountain National Park surrounds Estes Park on three sides, extending some 15 miles north and south and 20 miles westward. Through the heart of this vast area runs a splendidly representative stretch of the great Front Range of the Rockies . . . a segment of the Continental Divide, thickly timbered by the Roosevelt, Arapahoe and Routt National Forests.

The Front Range

The Front Range is characterized by narrow gorges and broad open parks surrounded by towering snow-capped heights which rise abruptly from the valleys. Down the eastern slope, water drains into the Mississippi and Atlantic Gulf. The western slope forms the headwaters of the Colorado River, which finds its tortuous way through the Grand Canyon of Arizona to the Pacific Ocean.

The special, inimitable charm of the Park is its adaptability to anyone's conception of ideal outdoor vacationing, and its amazing accessibility. Be it wilderness life, days of luxurious ease or strenuous sport. . . whatever your desire, satisfaction awaits you.

The granite Pillars of Hercules in the famed Big Thompson Canyon, the northern entrance to Rocky Mountain National Park.

A happy riding party, starting out for a glorious day in the unfenced wilderness of the Colorado Rockies.

Map of Rocky Mountain National Park.





The Notch on Long's Peak stands out in bold relief as seen from the Bear Lake Road.

Perfect Climate

The climate is light, very dry, and wonderfully stimulating. In spite of the altitude—7500 to 14,255 feet—the sunshine is warm and almost constant throughout the summer. Nights are cool, blankets are always welcome, and sound sleep is the rule.

The official summer season in Rocky Mountain National Park is June 15 to September 20, when hotels are open and daily transportation is available. Actually, the park is accessible all year and desirable accommodations are available the year 'round.

Sports Galore

What can one do in Rocky Mountain Park? You can hike, ride, motor, climb mountains, fish, camera hunt, swim, play tennis or golf . . . in fact, just about anything you like to do in summer. Horseback riding is probably

the most popular sport, because it is so easy and safe for even the most timid of tyros, and because one can ride almost anywhere. Some, however, prefer to hike and climb the days away, gaining new health and vigor from the keen tang of pine-laden air, the feel of the good earth beneath their feet. Eventually, leisurely, they may find their way to a summit or two, yet wisely do not make such an attainment an end in itself.

Another sturdier breed shuns the lower levels as a matter of choice and reaches always for the heights and few are the peaks that have not yielded their summits to this courageous clan who stalk the eagle to his eerie lair and revel in the bite of the wind as it sweeps the mountain passes.

Wilderness Students

The geologist is in his glory in the

Park, for glacial records are amazingly legible. Almost anywhere, one can study fascinating glacial forms . . . V-shaped valleys, cirques, lakes and moraines. Here, in some terrific upheaval of the past, a mountain was made. This tree-choked chasm, this trail of huge boulders, that sheer wall of granite—all are indelible records left by some mighty glacier.

For the botanist, the Park is a vast wild garden, profuse with color from early June to October. The Park's amazing floral album includes over a thousand species . . . fringed blue and other gentians, numerous columbines, martensia, phlox, primrose, Mariposa lilies, larkspur, Indian paint brush, lupin, and the Alpine buttercup that pushes up through the melting snow-drifts.

The thick, towering growths of evergreen trees are a revelation. Most characteristic are the Ponderosa and lodgepole pines, Douglas fir and blue spruce in the lower valleys; nearer timberline,

birch, Engelmann spruce and Alpine fir. Other familiar trees are the lovely quaking aspen, Rocky Mountain maple, alder, and Arctic willow.

Great Trout Fishing

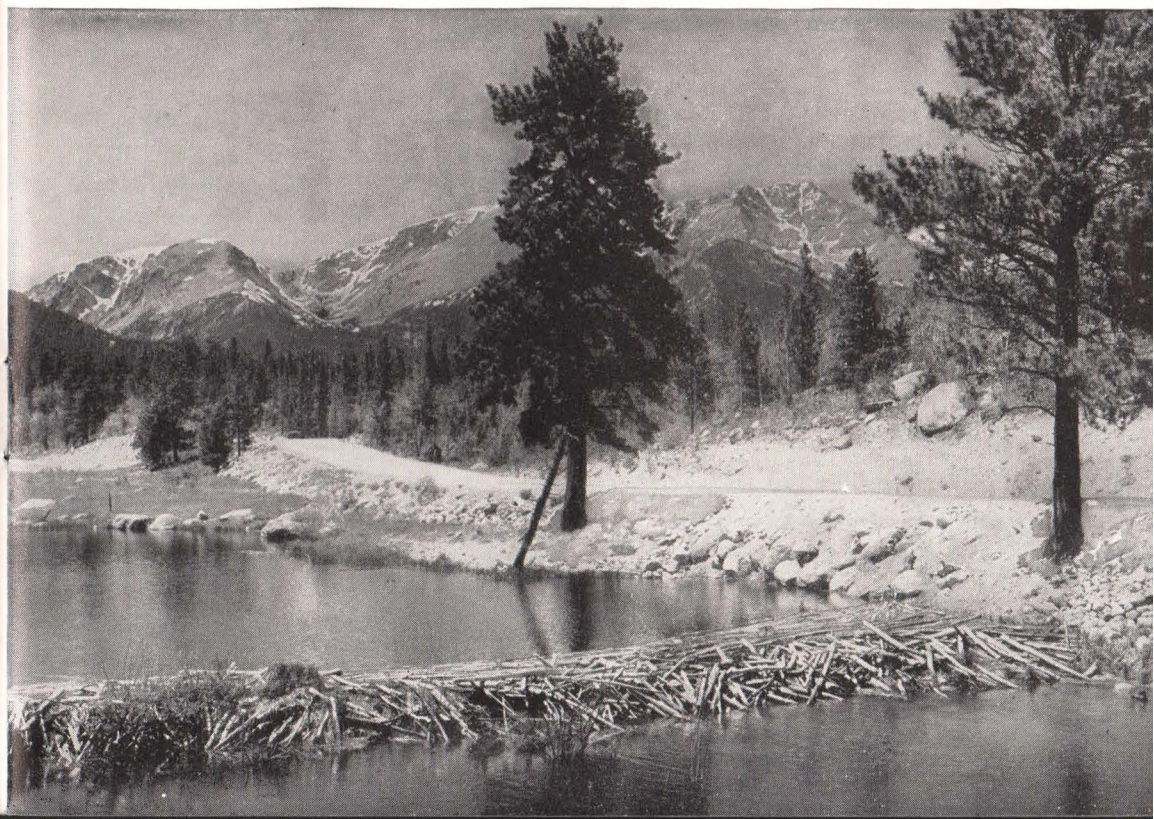
Ardent fishermen have long since discovered that some of the finest mountain streams in the West flow in or near the Park, stocked annually with millions of trout from local fish hatcheries.

Besides all this, everyone of course indulges the universal "sport" of loafing . . . taking one's blissful ease on some sunny veranda, under the whispering pines, or along a merry mountain brook. Just to relax and rest in utter peace, soaking in the sunshine and glorious ozone at every pore, gives one a new lease on life. And who shall say that that is not the best way to enjoy the mountains, after all?

Estes Park Village

Estes Park village is picturesquely situated at the confluence of the Big

Hidden Valley and the snow-clad Mummy Range, in Rocky Mountain National Park.





No vacation experience can compare with a ride to a mountain summit to witness the breath-taking beauty of a Colorado sunset.

Thompson and Fall Rivers. The village has only a small permanent population, but is well prepared for summer visitors' needs, with excellent stores, garages, swimming pool, golf courses, moving picture theater, school, Protestant and Catholic churches, etc. A handsome auditorium with a capacity of 1200 makes Estes Park a highly desirable summer convention city.

Several score first-class hotels, resorts and lodges are scattered in and around the Park, each offering some distinctive type of vacation life. Horse-shoe Park, seven miles west of Estes Park village, is a large, forest-edged valley of flowered meadows and rippling streams. Fall River and Fall River Road flank it on the north, Trail Ridge Road on the south . . . both converging to cross the Divide at Fall River Pass, 11,797 feet above sea level. North of this park along Roaring River is the wild, wonderful vicinity of Ypsilon and Lawn Lakes, Ypsilon Peak, Hagues Peak, Mummy Mountain and Hallett and Rowe Glaciers.

Peaceful Upland Valleys

Five miles west of the village is glacier-carved Moraine Park, the open valley of Big Thompson River. From

here delightfully popular trails mount to Fern and Odessa Lakes, deep in the rocky embrace of a great canyon. Beyond lies the tumbled vastness of the main Front Range.

Bartholf Park, two miles south of Moraine, is traversed by Bear Lake Road along sparkling Glacier Creek. Bear Lake is the starting point of trails into the great Wild Gardens . . . to mirror-like Dream Lake, Emerald Lake, Tyndall Glacier and Loch Vale. The Wild Gardens region is one of the loveliest scenic areas of the Park. Between its steep granite ramparts, fantastically shaped, lovely cascades somersault down to rich forests below, and wild flowers dot the upland glades in a riot of color. From Andrews Glacier and from Taylor Glacier, melting snows thread their way through romantic, cliff-cradled Loch Vale and The Loch, unequaled for sheer rocky wildness and beauty. At the head of the vale, walls of rock rise precipitously 3000 feet above icy, sky-blue lakes, and flowers grow profusely in the mossy soil.

To the east lies Glacier Gorge, bounded by McHenry's Peak, Thatch-top, Long's Peak and the great Divide.

A good trail enters this noble gorge; it is indescribably wild, yet well worth the effort of exploration.

The Long's Peak Trip

Long's Peak, most famous of all the heights of Rocky Mountain National Park, rises 14,255 feet above sea level, its snow-clad head towering more than 5000 feet above the valley floor. The trip to the summit is one of the most breath-taking of experiences. It is a hard, long trip, requiring guides and an overnight stay high up on the mountain's windy face. It is cold up there on the rim of the world . . . but the pygmy world lies below you, and you are its conqueror!

Two trails ascend Long's Peak, one from Bear Lake, the other up Battle Mountain. Horses are used only as far as Boulder Field, after which one climbs the rest of the way on foot, up past the curious Keyhole and the Narrows, to the actual thrilling summit.

The Wild Basin lies south of Long's Peak, eastward from the Continental Divide. In this superbly beautiful area are lakes and waterfalls, wild gorges and many rocky peaks, frequently 13,000 feet high. It is a marvelous camping and hiking ground, beloved by many a true lover of Nature.

Park Wild Life

The Park is a natural home for bear, deer, Rocky Mountain sheep, beaver and other wild animals. Bighorn sheep may occasionally be seen on Specimen



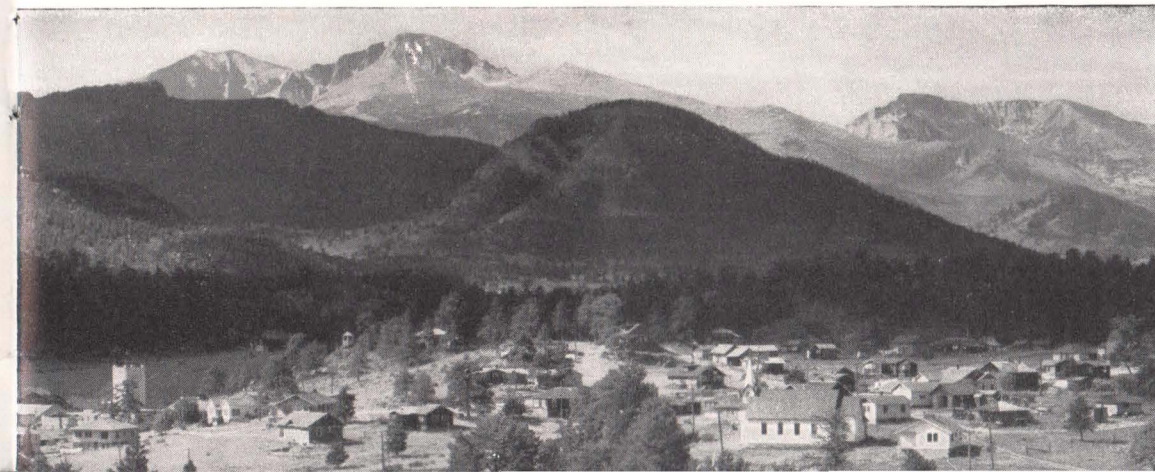
Colorado waters teem with mountain trout.

Mountain during the summer. Beaver are rapidly increasing, and their dams may be found along many a stream where the quaking aspen grow. Deer are a common sight, and elk also are no rarity.

There are more than a hundred species of birds, among them the blue-bird, hermit thrush, white-crowned sparrow, and that marvelous singer, the solitaire. The Rocky Mountain jay, chickadee, woodpecker, magpie, and the most curious bird in the Rockies, the water ouzel, are all-year dwellers. Above timberline one also finds the ptarmigan and the rosy finch.

Timberline lies at about 11,000 feet in Rocky Mountain National Park . . . a wild, weird region ruled by Nature's inexorable law, "survival of the fittest." Here stately spruces creep like vines, their trunks twisted and bent as

Estes Park village, headquarters for Rocky Mountain National Park.





Stone Mountain reflected in the quiet, pine-bordered waters of Fern Lake.

Rock Portals on the Trail Ridge Road, with Long's Peak towering in the distance.



they struggle through the rocks. Higher up these give way to scraggly growths, and finally to tough grass, hardy mosses and tiny Alpine flowers.

At even the highest altitudes, bright flowers grow in sheltered gorges, and the beautiful columbine, Colorado's state flower, is found in the lee of snowbanks and glaciers. Above rise the bare mountain masses of the far-flung Rockies. Thunderstorms gather swiftly on their sides . . . thrilling, awe-inspiring, but soon dissipated by the warm bright sun.

Grand Lake Region

The western gateway to Rocky Mountain National Park is Grand Lake village, on the shore of Grand Lake and connected with Estes Park by a splendid motor road across the Divide. Some two miles long and a mile wide, the lake lies a mile and a half above sea level. Here the Grand Lake Yacht Club has the highest yacht anchorage in the world and annually holds a midsummer Lipton Cup regatta. Grand Lake is one of the largest bodies of water in the state, and many trails lead into the mountains rising from the shore line.



Round Trip Fares

Round-trip tickets to Estes Park, Colorado are on sale during the summer months at all railroad ticket offices in the United States, the fare to the Park being \$8.00 higher than the fare to Denver. Such tickets include rail transportation to Denver and return, also motor transportation between Denver and Estes Park village.

Tickets to points west of Denver, when routed via Denver or the other Park gateways, permit stopovers for the short side trip to Rocky Mountain National Park—allowing as long a stay as one desires within the final return limit of rail ticket.

How to Reach the Park

Excellent motor service to and through Estes Park is provided by the Rocky Mountain Motor Co., from Denver, Boulder, Longmont, Loveland or Ft. Collins. Modern, high-powered motor buses operate on regular schedules throughout the summer, over several scenic routes. The Big Thompson Canyon route, via Loveland, traverses the celebrated Box Canyon in the Roosevelt National Forest, towering hundreds of feet on either side of the winding Big Thompson River. Twisting and turning as it climbs the gorgeous canyon, the road suddenly emerges into the northeast section of Estes Park.

Over the North St. Vrain route, via Longmont and Lyons, the road follows the St. Vrain River, through a wonderfully rugged country, back and forth across sunlit canyon and sparkling stream, ever upward. Pausing at the crest of Park Hill, the road leads rapidly downward to enter Estes Park from the southeast. The South St. Vrain route via Boulder or Longmont negotiates the entire length of the canyon of South St. Vrain Creek from Lyons to Allen's Park, where the road turns north along the mighty fringe of

Rocky Mountain National Park and through Roosevelt National Forest to reach Estes Park from the south, over the famous Peak-to-Peak Highway.

Motor Bus Schedules

VIA BIG THOMPSON OR NORTH ST. VRAIN CANYON

Read Down		Read Up	
* 9:45AM	† 3:30PM	Lv. Denver (Union Station)	Ar. * 5:45PM
	† 3:33PM	Lv. Boulder	Lv.
* 10:48AM		Lv. Longmont	Lv. † 4:42PM
	† 4:10PM	Lv. Lyons	Lv.
* 11:26AM		Lv. Loveland	Lv. † 4:12PM
* 12:40PM	† 4:55PM	Ar. Estes Park	Lv. † 3:00PM

*Via Big Thompson Canyon (June 15-Sept. 15)

†Via No. St. Vrain Canyon (June 15-Sept. 20)

‡Via Big Thompson Canyon (June 1-Sept. 30)

VIA SOUTH ST. VRAIN CANYON

Read Down	Mls.		Mls.	Read Up
* 9:45AM	0	Lv. Denver (Union Station)	Ar. 91	* 12:35PM
* 10:48AM	34	Lv. Boulder	Lv. 57	* 11:33AM
* 11:28AM	52	Lv. Lyons	Lv. 39	* 11:02AM
* 12:21PM	73	Lv. Allen's Park	Lv. 18	* 9:59AM
* 12:27PM	76	Lv. Copeland Lake	Lv. 15	* 9:53AM
* 12:31PM	78	Lv. Meeker Park	Lv. 13	* 9:49AM
* 12:38PM	82	Lv. Longs Peak	Lv. 9	* 9:42AM
* 1:05PM	91	Ar. Estes Park	Lv. 0	* 9:15AM

*Via So. St. Vrain Canyon (June 1-Sept. 30)

•Via So. St. Vrain Canyon (June 15-Sept. 20)

In addition to these motor routes, a fourth route known as the "Grand Lake Circle Tour" enters Estes Park via Big Thompson Canyon, crosses the Continental Divide to Grand Lake via the world-famous Trail Ridge Road, and returns to Denver on a great circle via Berthoud Pass and Idaho Springs . . . connecting with the Burlington's "Denver Zephyr" for the East. For rates, consult your local ticket agent.

240-MILE GRAND LAKE CIRCLE TOUR

Mls.	(June 15-Sept. 15)	Schedule
0	Lv. Denver (Union Station)	9:45AM 1st day
83	Ar. Estes Park (lunch)	12:40PM 1st day
83	Lv. Estes Park	2:30PM 1st day
132	Ar. Grand Lake (overnight)	5:30PM 1st day
132	Lv. Grand Lake	8:30AM 2nd day
203	Ar. Idaho Springs	11:20AM 2nd day
238	Ar. Denver (Union Station)	12:50PM 2nd day

Grand Lake—on the western slope of the Continental Divide—highest yacht anchorage in the world.



Gateway to the Glaciers

BOULDER • GLACIER REGION

Twenty-nine miles northwest of Denver lies Boulder, key city to the great glacier region in the Roosevelt National Forest south of Rocky Mountain National Park, and eminent among Colorado's alluring resort cities. This beauty spot at the mouth of lovely Boulder Canyon is the seat of the State University, the Colorado Sanitarium, the noted Blue Bird enterprise, and (in July and August) the famed Colorado Chautauqua.

This mountain-locked city at the foot of the Arapahoe Peaks has 6000 acres of mountain park and is the entry to a perfect labyrinth of all that makes a vacation in the mountains worth while. Close at hand are rugged ranges, glacial lakes and streams, hundreds of square miles of virgin forest, a wonderland of canyons, plunging cataracts, lakes and frowning crags. A network of motor roads traverses the entire region, making it easy to reach seemingly inaccessible heights and scores of attractive alpine resorts.

There are many such charming havens of rest, inviting one and all to spend a week, a month, or all summer in a cool green forest-and-mountain world. Crisp nights and long deep slumber combine with sunny days in the open air to provide a remedy for any ailment, mental or physical. One can stroll through meadow and flowers; penetrate the endless forest on horseback, up to majestic heights; and continue on foot up among the embattled peaks to where the eternal glaciers "grow."

Here are the famous Colorado Glaciers, greatest in the state . . . gigantic, living, moving ice fields high up under the foreboding crags that straddle the Continental Divide—12,000, 13,000, 14,000 feet above sea level. These mysterious phenomena, among the most fascinating in Nature, are up in regions of perpetual snow and are the source of countless streams that tumble to the valleys far below, forming sparkling lakes on the way and

eventually finding a path to the sea.

These living glaciers . . . Arapahoe, St. Vrain, Isabel and Fair . . . are the most accessible in the world. To study them from close at hand is an unforgettable experience, giving one a deeper insight into the mighty scheme of the universe. On every hand, there are scenes to stagger the imagination . . . enormous cirques, great rock moraines, pressure folds, yawning crevasses, visible ice strains, and perhaps strangest of all, "red snow."

St. Vrain Glacier, lying on the very ridgepole of America at 12,500 feet, is 500 feet thick and nearly two miles long. Fair Glacier, still higher up, clings almost vertically to the great Divide above the forbidding Hell Hole. Arapahoe, perhaps the best known, is the largest living glacier in the Colorado Rockies.

Boulder has the distinction of being the only city in the United States, if not in the world, that owns its own glacier—Arapahoe, source of the city's water supply. Its purchase by Boulder was authorized in 1919 by a special

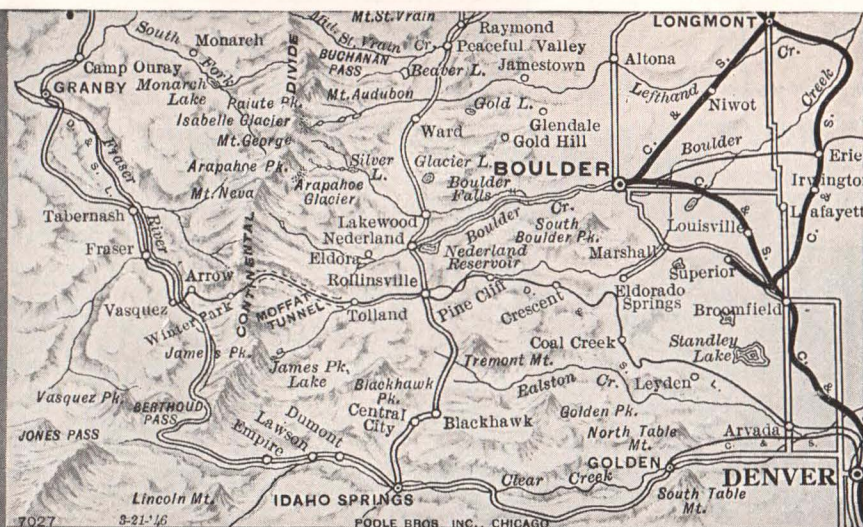
Act of Congress to insure for the city a constant, pure supply of water direct from the glacial snow and ice. Arapahoe Glacier is nearly a mile square and from 100 to 500 feet thick.

The University of Colorado has erected a "Science Lodge" only a few miles from this great ice field, whose study is included in geological and botanical courses conducted during the regular Summer School.

Another feature of the university's summer sessions is the summer Writers' Conference, held annually since 1930 under auspices of the university. Its purpose is to stimulate creative writing in an inspirational atmosphere under leadership of many famous authors.

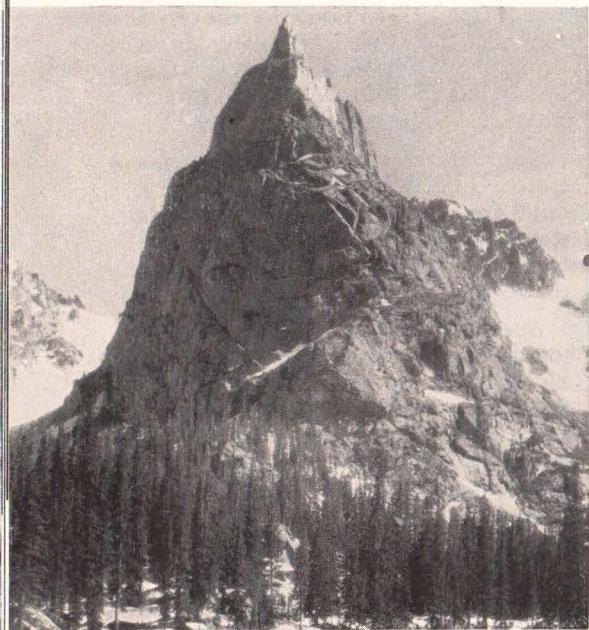
Just a short distance from Boulder are a number of Colorado's old "ghost" towns which figured so vividly in early gold mining activities. Central City, Black Hawk, Nevadaville . . . these were names to conjure with, back in the roaring '60's, when fabulous stories of rich "strikes" brought forth a wave of gold-mad humanity

Mountain-edged Boulder, "gateway to the glaciers."



Map of the Boulder-Glacier Region.





The lofty spire of Lindbergh Peak, a prominent point in the Colorado Rockies.

who sought fame and fortune with pick and shovel, gold pan and sluice box.

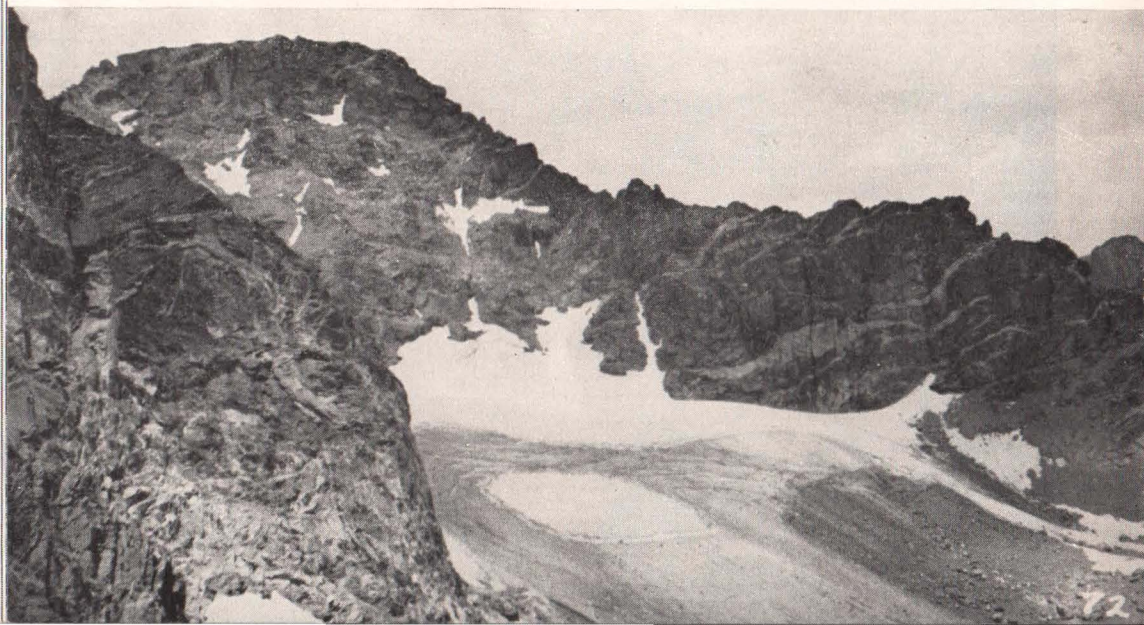
They swarmed the gulches, valleys and streams, scarred the surrounding mountains, and lived lustily amid the

frenzied gaiety of the famous "boom" towns of the day. From the rich ore veins all about a golden flood poured forth, and Central City, with its twin city, Black Hawk, was the center of it all. By 1874, however, the amazing streams of gold had begun to peter out, leaving in their wake deserted cities of memories . . . lonely, virtually lifeless "ghost" towns.

One of the few buildings left intact in Central City was the Grand Opera House, where Booth, Bernhardt, Patti, Salvini, Joseph Jefferson and other stage immortals once played. Turned over to the University of Denver as an unusual historic museum, the old Opera House was never reopened until 1932, when the Annual Play Festival was inaugurated to commemorate glories of bygone days. This unique event, usually held in July and featuring the finest actors and actresses of today, brings back the glamour of those forgotten times and attracts visitors from all over the country.

Boulder, the "gateway to the glaciers," is a destination for round-trip tickets routed via the Burlington to Denver, thence Colorado & Southern Ry. Tickets so routed will be honored, if desired, on motor buses of the Denver-Boulder Bus Co., between the two cities.

The vast expanse of Arapahoe Glacier, the only city-owned glacier in the world.



Where plain and mountain meet

COLORADO SPRINGS and THE PIKE'S PEAK REGION

Colorado Springs is more than an important gateway to the Colorado vacation regions . . . it is a vacation region in itself. Matchless climate, predominantly sunlit days and a great wealth of outdoor attractions within a short distance of this city "where plain and mountain meet," account for its enviable position in the front ranks of famous resort sections in the Western mountainlands.

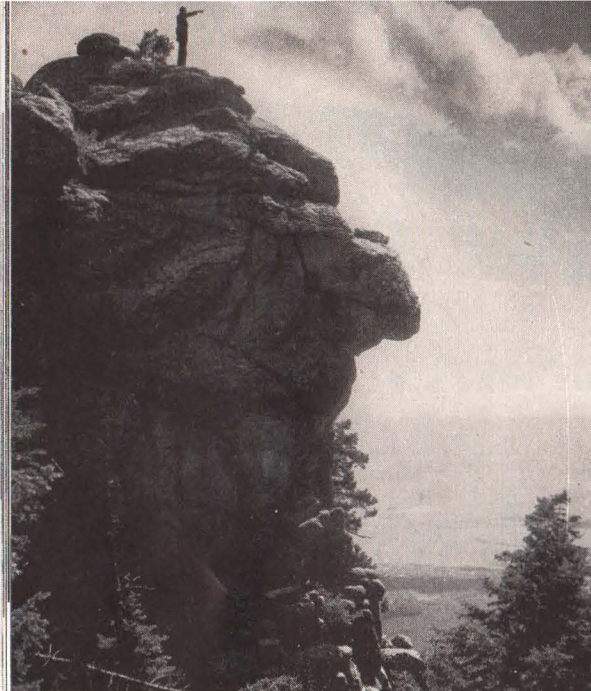
The summer season is exceptionally long at this unique city on the fringe of the broken Rampart Range of the Rockies, 75 miles due south of Denver on the Burlington-Colorado & Southern Lines. Lying at an altitude of approximately 6000 feet, it is always cool in the shade, always warm in the sun, and outdoor life for visitor or resident is delightful practically every day in the year.

So close is Colorado Springs to a multitude of superlative vacation places, that one can enjoy — almost anywhere — the delightful combination of life in the heart of the mountains with all the conveniences of a modern city close at hand. Just 15 minutes by automobile and you are right among the peaks . . . in the midst of the famous Pikes Peak region. No similar area of its size on the globe contains so many glorious vistas of peaks, valleys and tumbling water, picturesque camping places, and countless other scenic wonders . . . dominated at all times by Pikes Peak, the "patriarch of the Rockies."

Pikes Peak! There is a name that stirs the imagination. It overshadows the entire vicinity with its mighty magnificence, and has been seen and ascended by more people than perhaps

Pikes Peak as seen through the Gateway to the Garden of the Gods.





"The end of the road" . . . at the summit of the Broadmoor-Cheyenne Mountain Highway.

any other mountain in America. Discovered in 1806 by Lt. Zebulon M. Pike (who incidentally, appalled by its height, said it would never be scaled), for many years it was the snow-capped beacon for the westbound covered wagon trains. Far from being Colorado's highest summit (25 others surpass its 14,110 foot altitude), Pikes Peak still stands alone as a glorious symbol of the Great West. It is, indeed, synonymous with the best of the high places in the Colorado Rockies, one of the most illustrious "highlights" of the West.

Today Pike would be amazed if he

could see how many thousands of visitors reach this lofty summit every year. All summer, they ascend in a constant stream . . . over a wonderfully scenic, free auto highway; via cog railway; on horse, and even (hardy souls) on foot. Few attempt to hike it, except for the famous Ad-A-Man Club of Colorado Springs, whose members climb the peak every New Year's Eve to initiate one new member annually and celebrate the new year with fireworks.

No matter how you reach the summit, a never-to-be-forgotten sight awaits you. Sixty thousand square miles of mountain and plain are visible in glorious panorama, from the peaks of the Continental Divide 100 miles north to the serrated pinnacles of the historic Sangre de Christo range southward. Distant storms form before your eyes, seas of clouds billow below your feet. The air is so rare that the "drag" of altitude is very noticeable, and you suddenly realize how earthbound we really are. Few persons, however, feel any ill effects as a result of the tremendous height.

While not a metropolitan city (36,800 people), Colorado Springs is admirably endowed for the role of host to vacationing thousands. Its fine modern hotels, wonderful system of parks, numerous excellent highways and splendid rail service, dovetail with any recreation plan. Trails abound, piercing canyons, forest, park and quiet glen, ascending ridges and mesas, following foaming streams and cascades, up to the jagged mountain crests. And all this within a radius of some twenty miles, almost every section of which is amazingly accessible.

Besides the breath-taking Pikes Peak highway, many other world famous motor roads serve the region. There is the spectacular new Broadmoor-Cheyenne Mountain Highway, zigzagging up a 9500 foot mountain that rises abruptly from the plain. The Corley Mountain Highway, built over the road bed of the old Cripple Creek Short

Line, is a thrilling route, through tunnels, over trestles, along forested canyons and circling towering peaks, to Cripple Creek's gold camps.

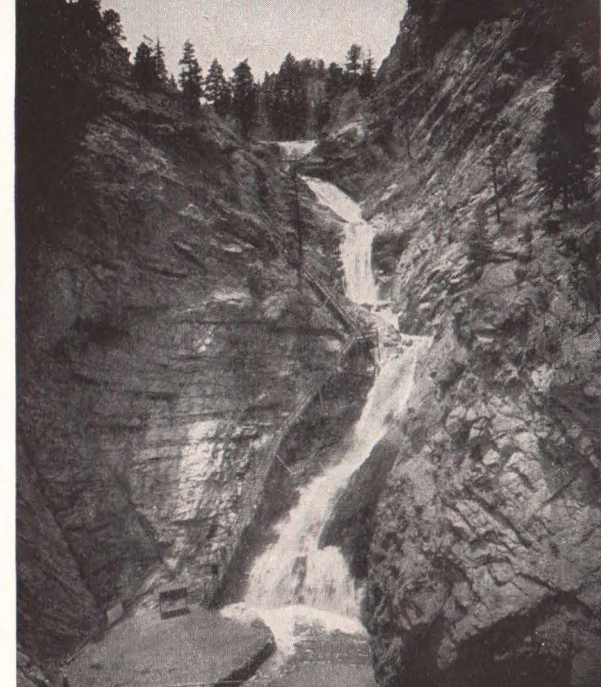
Especially popular is the road through the gigantic Pillars of Hercules that stand guard before the granite walls of South Cheyenne Canyon where the Seven Falls spill down a steep precipice. In the lovely canyon above the falls is the grave of Helen Hunt Jackson.

Manitou, just six miles west of Colorado Springs, is famous for its mineral waters, fine baths and surrounding scenery. The city lies in a cleft of the mountains at an altitude of 6335 feet, overshadowed by Mt. Manitou at its very edge. Legend has it that hostile Indian tribes "buried the hatchet" when they came here to bathe in the healing waters of the mineral springs. There are some 15 medicinal springs within the city limits, visited by thousands every year.

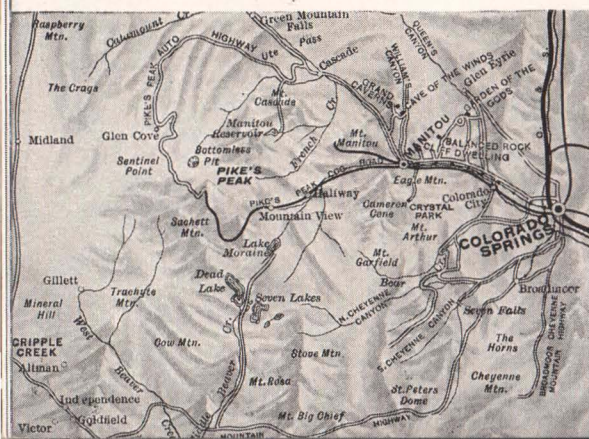
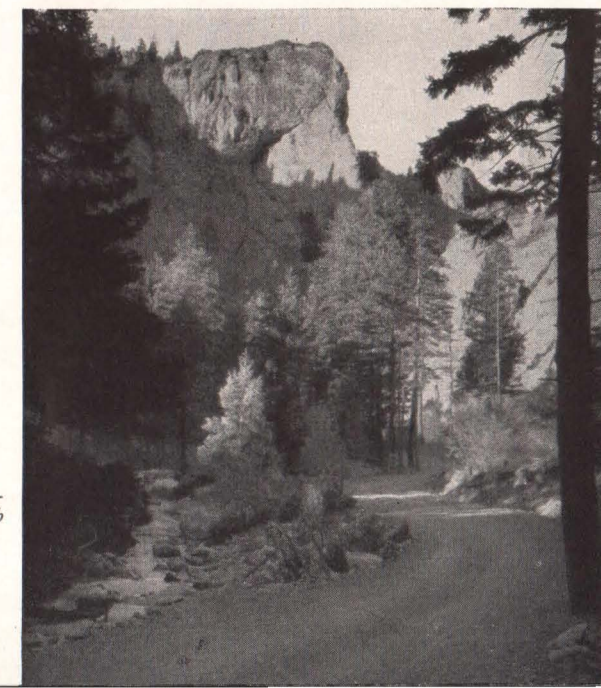
Just a few miles distant are numerous beauty spots of the Pikes Peak region. In a short time one can visit Garden of the Gods, Williams Canyon and Cave of the Winds, Rainbow Falls, Phantom Cliff Canyon and ancient cliff dwellings; ascend Mt. Manitou by cog railway; or motor over historic Ute Pass, once trod by Indians bound for their summer hunting grounds. Many delightful resorts are in the pass, including Cascade, Chipita Falls, Green Mountain Falls and Florissant.

Only twenty miles southwest of Colorado Springs is the fabulous Cripple Creek district, whose gold mines have yielded great fortunes in the yellow metal. Even today, many a train of ore-laden cars emerges from Cripple Creek and nearby Victor, and rich rewards of gold bullion are made possible by modern and efficient mining methods.

A lovely vista on the highway that leads into North Cheyenne Canon.

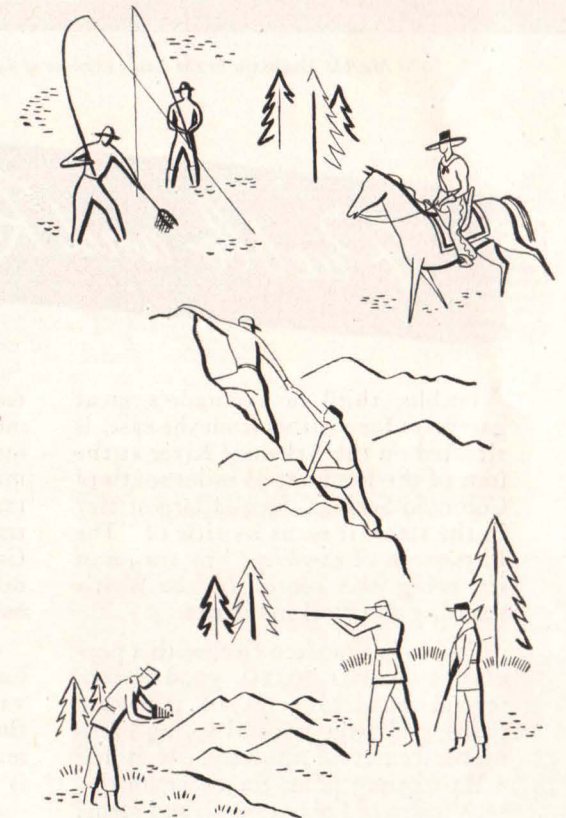
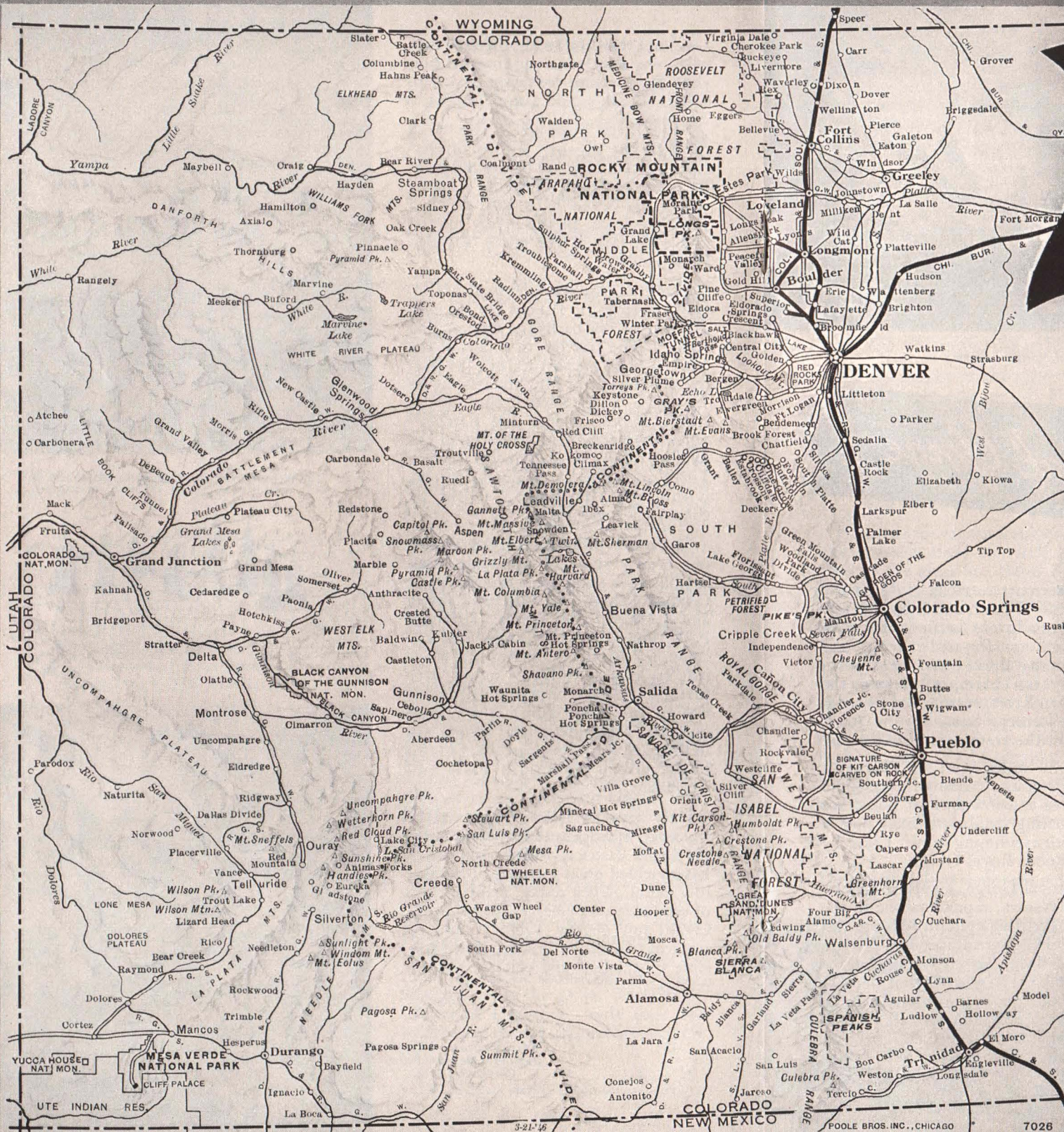


Seven Falls—South Cheyenne Canon.



Map of the Colorado Springs—Pikes Peak region.

MAP OF THE *Colorado* VACATION REGIONS



SERVED BY THE

**Burlington
Route**



Marble Mountain in the lovely expanse of San Isabel National Forest.

Pueblo and Royal Gorge

Pueblo, third of Colorado's great gateways for visitors from the east, is situated on the Arkansas River at the foot of the Rockies, 45 miles south of Colorado Springs. Second largest city in the state, it earns its title of "The Pittsburgh of the West" by reason of its being the center of the West's smelting and steel industries.

Pueblo is a modern city, with a population of over 50,000, good hotels, several hundred acres of mountain parks, and large mineral spring baths in the center of the city. It is the main starting point for excursions to such renowned playgrounds and scenic wonders as San Isabel National Forest, Canon City and Royal Gorge, the Sangre de Christo and Spanish Peaks, and Great Sand Dunes National Monument, as well as Mesa Verde and other wonderful regions in Western Colorado.

Less than 35 miles from Pueblo are

two fine resort sections close to the mountains—Beulah and Rye. The former lies in a lovely fertile valley with mineral springs, forested canyons, and many shady drives and mountain trails. Rye is a charming village on the Greenhorn River, surrounded by magnificent scenery. Some of the finest fishing in the state is in this section.

Only 30 miles west of Pueblo is Canon City, the center of a splendid variety of mineral springs noted for their healing qualities, including a mammoth swimming pool. Close by is the famous Royal Gorge.

The Royal Gorge, a superb masterpiece of Nature, represents one of the boldest, thrilling epics in Western rail history. Imagine a stupendous canyon 2,000 feet deep, ten miles long and, for the most part, so narrow that one can toss a stone from wall to wall. Through this mighty crevasse races its restless maker, the Arkansas River.

At the bottom of the canyon is the "Royal Gorge" line of the Rio Grande between Denver and Salt Lake City. Construction of the granite-bound steel highway through the canyon is one of the world's great railroad engineering marvels. At one point, where the gorge is only 30 feet across, the tracks run over the famous Hanging Bridge, suspended parallel with the rushing river by immense steel supports set in the solid rock walls.

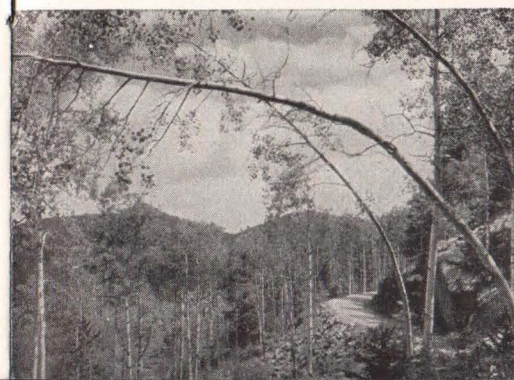
From Canon City one can motor out over a breath-taking new Suspension Bridge that swings across the gorge 2,056 feet above the river. This colossal structure is 880 feet long and over twice the height of any other suspension bridge in the world. From its eerie height there is a superb view of the Rockies, as well as of the gorge itself, where seemingly toy trains wind their way between precipitous walls.

San Isabel National Forest

Facilities for vacation enjoyment are unsurpassed amid the half million acres of the great San Isabel National Forest. Through the eastern section of this beautiful area run the Wet Mountains, while the enormous Western section, paralleling the fertile San Luis Valley for nearly 150 miles, contains the glorious Sangre de Christo Range and, close to the border line of New Mexico, the historic Spanish Peaks. In this mighty expanse are some of the highest peaks in all Colorado.

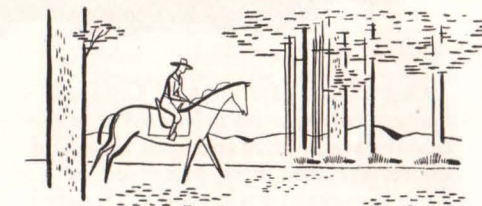
Here are unscaled heights, unexplored caves, bottomless pits, wilderness unparalleled, mirror-like lakes,

The Beulah-Rye road in the heart of San Isabel National Forest.

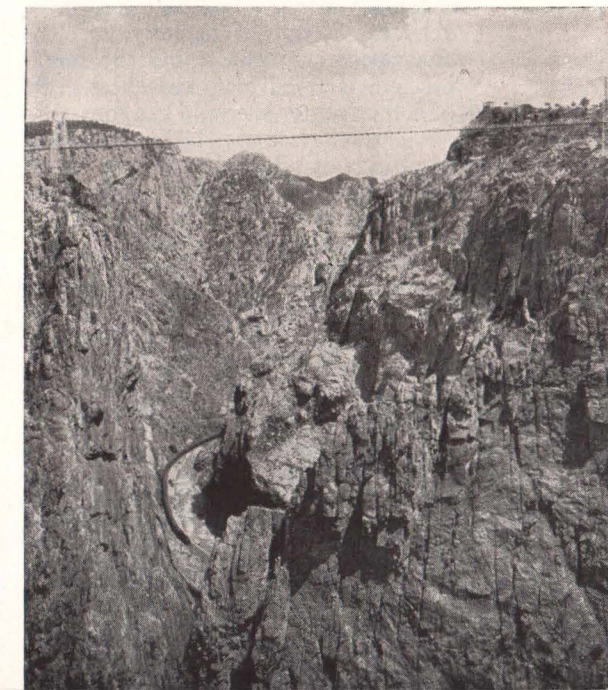


great canyons and hundreds of square miles of marvelous virgin forest. Trout streams abound, restocked yearly by federal and state fish hatcheries. There are over 700 miles of well-marked auto roads and countless winding trails, thus affording easy access to the region and to numerous inviting hotels, resorts and ranches on the fringe of the forest.

The greatest (and almost the only) restriction on anyone's freedom in San Isabel, as well as in all our national forests, is the insistence that camp fires be completely extinguished before they are abandoned, and that every precaution be taken against forest fires.



A toy-like transcontinental train winds its way through the grim walls of the Royal Gorge, topped by a breath-taking highway bridge.



A Glorious Playground

MESA VERDE AND WESTERN COLORADO



One of the strangest of Colorado's many scenic rarities is Mesa Verde National Park, where the most beautiful, impressive and best preserved of all American prehistoric ruins are located. The park includes some 50,000 acres of remarkable loveliness tucked away in the far Southwestern corner of the state, easily reached by motor roads and perpetuated for all time by the federal government.

Mesa Verde is a fascinating place, a veritable island of mystery and enchantment that challenges the imagination. Carved from the sheer cliffs of some twenty-six wild canyons that gouge its surface are the amazing cliff dwellings of a long lost people. Who they were, whence they came, where they went and why . . . no one knows.

Here one may stand on the edge of the great Emerald Table 2000 feet above the floor of the great Montezuma Valley. Climb among the cliff houses, such as Spruce Tree House and the marvelous Cliff Palace. Explore rocky paths, secret passages, strange ceremonial chambers and well-formed streets that echoed to thousands of feet about the time Richard I was lead-

ing his Crusaders into the Holy Land.

In conjunction with Rio Grande railroad from Denver, Grand Junction, Montrose and Durango, motor bus service is operated by the Rio Grande Trailways to Mesa Verde from June 1 to September 15. The park trip may be purchased separately or as a side trip from any of these points, by being included in your rail ticket at time of purchase.

Mesa Verde, however, is only one of the many glorious attractions of



The Balcony House, one of the best preserved relics of the Mesa Verde cliff dwellers.

Western Colorado. Here is a gargantuan playground that has practically everything in the way of outdoor allurements. All is on a grand and glorious scale . . . all seems calculated to make Man realize the vastness of Nature's works, and to give him breadth and wisdom through overwhelming perspective.

There is marvelous fishing along such famous streams as the Gunnison River, the Rio Grande (the same Rio Grande that flows to Old Mexico), the San Miguel, Yampa and Colorado Rivers, and many well-stocked lakes. Lovers of the unusual will revel in the monstrous and grotesque geological phenomena of the Wheeler and Colorado National Monuments.

Mineral springs abound in many sections, with splendid facilities for enjoying them . . . as at luxurious Glenwood Springs, on the Colorado River, where a feature is a huge outdoor swimming pool of hot mineral water. Other popular radioactive springs are located at Pagosa, Ouray, Waunita, Salida, Leadville and Buena Vista.

The largest flat topped mountain in the world, rising a mile above the surrounding country, is in Western Colorado . . . renowned Grand Mesa, with some 360 trout-filled emerald lakes, grand views and boundless forests. Tremendous areas of federal-protected national forests stretch almost continuously from the Wyoming border to the New Mexico line . . . Rio Grande National Forest, Montezuma, Uncompahgre, Grand Mesa, Gunnison, Coch-



Deep in the San Juan Mountains.

etopa, White River, Holy Cross, Pike and Routt.

There is no lack of mountain grandeur, for all along the Continental Divide are such great ranges as the Rabbit Ear, Park, San Juan, La Platte, the Sawatch group, Cochetopa Hills, and the San Miguel Mountains. In the Sawatch group are the three highest peaks in the state . . . Mt. Elbert (14,420 feet), Mt. Massive (14,404 feet), and Mt. Harvard (14,399 feet). Close by is historic Leadville, the world's highest incorporated city.

Throughout this stupendous vacationland are hundreds of excellent places that cater to lovers of the great outdoors. They offer—according to location, altitude, accommodations and featured activities—a summer "bill of fare" that will appeal to anyone.

Trappers Lake, White River National Forest, a famous fishing spot.



The land of boots 'n' saddles

DUDE AND GUEST RANCHES



In many of the mountain lands of the West, one finds that typically (and solely) American institution, the Dude or Guest Ranch—and Colorado has a goodly quota of such fascinating places. Scattered through the mountain regions along the fringes of deep, primeval forests, or basking in the sun light streaming down upon many a grass-carpeted valley—ideal surroundings for an outdoors vacation—here the dude and guest ranch thrives.

These ranches are indigenous to no one part of the state. They can be found in general where the old stock men, the men who built the West, came upon good grazing and water lands. All, however, are alike in certain respects . . . all offer true Western hospitality, and a particularly enviable and enjoyable type of outdoor life.

Many are true ranches in the real Western meaning—operating ranches where cattle are raised, “worked” and marketed as a business, and where the guest may know the fascinating experience of riding the range with the “wranglers,” participating (in a mild way) in the day’s activities of cutting out, roping, roundups, branding, etc.

Other ranches cater more specifically to a strictly summer clientele, with

their personnel and activities directed toward the comfort, interest and stimulation of the vacationist. No matter which type of establishment appeals to you, there is inspiration for the weary and the mentally jaded in the soul-stirring solitudes, pure crystalline air and vigorous, healthy outdoor sport wherever you go.

No “dress up” places are these dude ranches . . . you can dress as informally as you please. Extensive outfits are unnecessary, since you can purchase what you need on arrival in Colorado.

Here the Horse reigns supreme, for the dude ranch represents the world of boots, saddle leather and ten gallon hats. Here the cowboy is in his element and if you would make the most of your opportunities you will ride with him through a wilderness world that you might otherwise never see. Where he goes, there are trails but no roads. With a good horse between your knees and vast miles of wonderful riding country all about, every day becomes a glorious new experience.

The average Colorado dude and guest ranch is not a large and spacious establishment as to accommodations and service. Their very compactness is one of their chief charms, for here you are more an individual than a



guest and the friendly portals of the Great West are opened for you as they would be in no other region of the country. Yes, a ranch vacation is a different vacation—one that offers something new and delightful from anything you may ever have known.

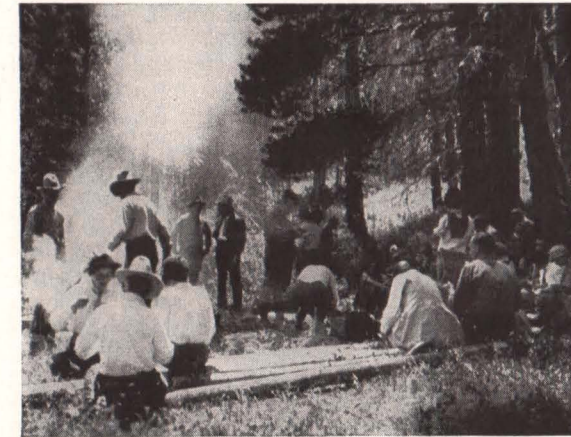
In selecting a ranch, it is suggested that prospective “dudes” should correspond personally with ranchers for more detailed information than it has been possible to include in the list shown on pages 42 and 43 of this book-

let. Reservations are made in advance so that arrangements can be made to have the ranch car meet one’s train.

Colorado dude ranch rates include lodging, meals, entertainment, guides for ordinary short trips, and in many cases the use and care of a private saddle horse also. As a rule, rates are materially reduced for the late Fall months during the hunting season, and during the months when winter sports are offered at ranches that are open all year.



A high spot in Colorado dude ranch life . . . saddling up in the corral before the daily ride.



A picnic out in the open, amid the scented pines . . . with the “wranglers” doing the chores.

Upland trails lead to vistas of grandeur 'mid Colorado's mountain peaks.



Summer Camps

FOR BOYS AND GIRLS



Colorado is famous for its great number and variety of summer camps for boys and girls, offering a wide range of accommodations, activities and charming locations. Some of these camps are quite small, with personal supervision stressed above all else and offering a truly delightful atmosphere of Western home hospitality. Some employ complete professional staffs of instructors and advisors, with extensive facilities for the training of youth from six to twenty-one years of age. Other camps are operated in conjunction with real cattle ranches, with the attendant thrills of "range riding," roping, round-ups and similar fascinating ranch lore.

Colorado's famous summer camps are not confined to any one locality or region . . . you will find them in many sections of the state, although always within sight and easy riding distance of the mountains. The majority are located in and around Rocky Mountain National Park on both sides of the Continental Divide, and in the Boulder-Glacier and the Colorado Springs-Pikes Peak districts, with a few in the western part of the state. While the camps vary considerably in their programs, range of outdoor activities and accommodations, all are alike in several outstanding respects.

These camps teach self-reliance under understanding leadership and enable the boy or girl to develop initiative, resourcefulness, love of natural beauty, and that spirit of comradeship and cooperation so essential to modern

social life. Above all, they offer wonderful opportunities for a grand vacation among Colorado's vast mountain grandeur. Indeed, no more splendid vacation could be imagined for a growing boy or girl than a summer at some well-supervised Colorado camp. Health, happiness and clean alert minds are the almost inevitable results, coming during the most formative years when they will do the most permanent good.



*Ride 'em Cowboy!
What a thrill to
see a real Western
rodeo in action.*

Every day is a new and rapturous experience for the growing youngsters. Practically every camp maintains a string of thoroughly dependable riding horses, for riding is the almost-univer-



A riding class at one of the better known Colorado camps for girls . . . trained riders, everyone.

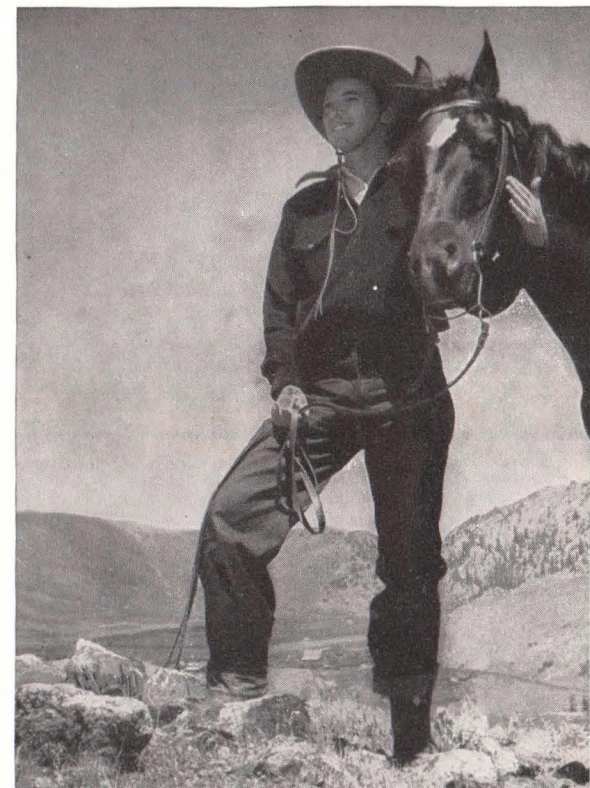
sal sport in Colorado. Horseback trips are daily occurrences, under careful instruction and constant supervision. Beginners have no difficulty in learning to ride in the free and easy Western style, once learned never forgotten.

Some camps feature a maximum of outdoor life, with overnight camping and pack trips and even short visits to real western rodeos nearby. A few camps for boys are located on real cattle ranches, where the boys enjoy the thrill of riding with the cowboys at their daily range tasks.

Boys and girls usually are segregated as to age so that desirable companionships may be formed. At some places, tutoring can be arranged throughout the summer, and personal supervision (while seldom necessary) can also be provided under capable, mature guidance. In general, however, the programs of activities are not dictated by strict, rigid methods of regulation but are calculated to develop the best in growing youths, while giving them the priceless advantages of life in the great outdoors.

Before selecting a camp where your boy or girl will spend all or part of the summer vacation period, references may be asked of any Colorado camp listed on pages 44-45 in this booklet, and freely investigated for your own satisfaction as to its complete reliability. Many establishments have non-resident representation in larger cities of the Midwest and East so that dependable information may be available all year 'round.

A group of happy boys at a Colorado mountain camp.



Put your growing youngster in the place of this Colorado camper. Don't you think it would do him a world of good.





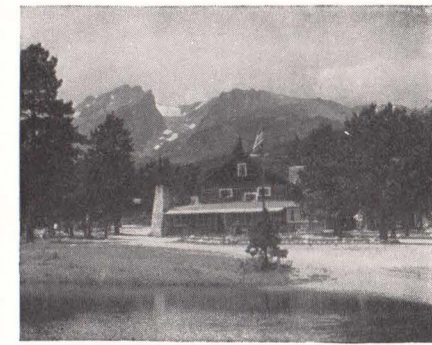
A few buildings of the Y.M.C.A. Conference, annually held in Estes Park.



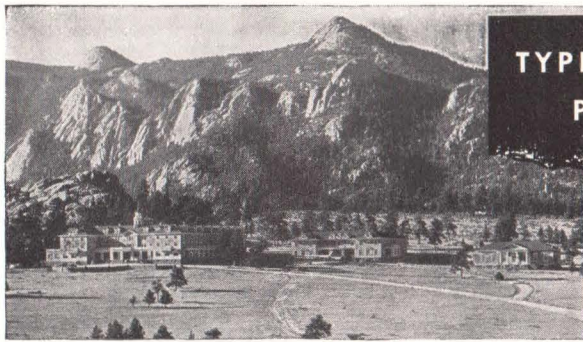
*Baldpate Inn—
Rocky Mountain National Park.*



The Broadmoor Hotel at Colorado Springs, one of the best known and most complete hotels in the West.



Sprague's Lodge in the heart of Rocky Mountain National Park.



An outstanding hotel of the Rocky Mountain National Park region . . . The Stanley.

TYPICAL SUMMER VACATION PLACES IN COLORADO



TYPICAL SUMMER VACATION PLACES IN COLORADO

The question of "where to go" in Colorado depends entirely on your taste in summer recreations. Throughout the state, you will find a host of hotels, lodges and cottage resorts catering solely to your pleasure and comfort. They range all the way from modest cabin camps, rustic furnished cottages and intimate little resorts with limited capacity, to luxurious hotels where the service is the equal of any metropolitan standard. You can select from a number of splendid camps for your growing boy or girl, and the dude or guest ranch is well represented too.

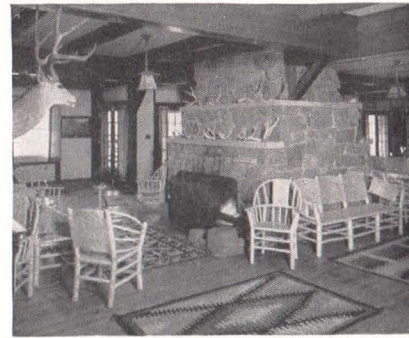
For your convenience, the Burlington has prepared an extensive list of Colorado Hotels, Resorts, Boys and Girls Camps, and Dude Ranches. This list will be found on pages 41 to 51, inclusive, in this booklet.



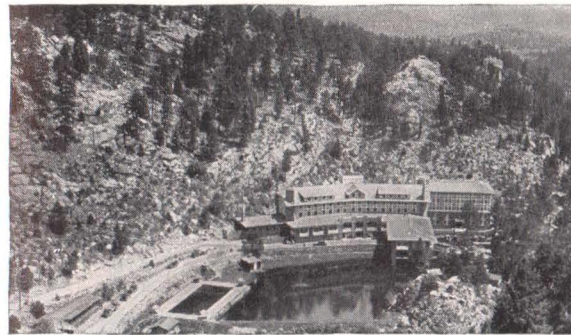
Comfortable cabins are available on the shores of many a wilderness lake.



Guests of Elkhorn Lodge, Estes Park, ready for an exhilarating morning ride.



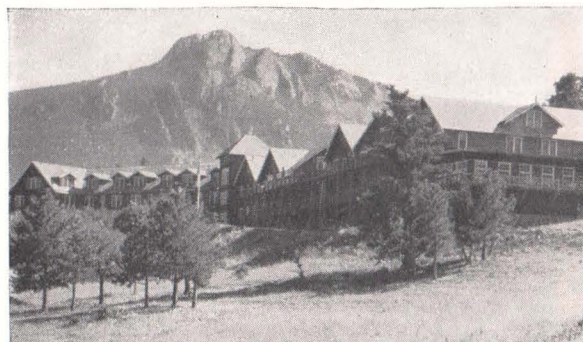
Typical informal atmosphere of a first-class Colorado resort.



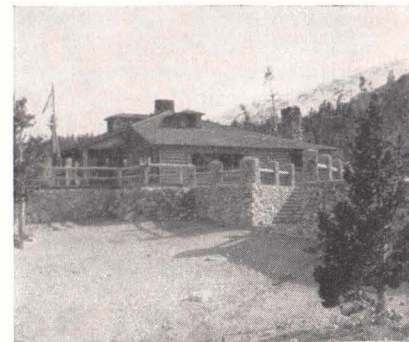
Troutdale-in-the-Pines, a well known vacation place in the Denver Mountain Parks.



Brook Forest Inn, near Evergreen in the heart of the Denver Mountain Parks.



Mountain-flanked Estes Park Chalet-Ranch, Rocky Mountain National Park.



Hewes-Kirkwood Inn, at the foot of Longs Peak.



The Craggs, atop a bold bluff, gazing out over Estes Park and surrounding mountains.



*Fall River Lodge—
Rocky Mountain National Park.*



From any point in Rocky Mountain National Park, the summit of Longs Peak commands attention.



Colorado is a Winter Sports paradise, with timber-free runs to challenge anyone's skill.



Hotels and Resorts of Colorado

ROCKY MOUNTAIN NATIONAL and ESTES PARK REGIONS

Name	Manager	P. O. Address (Colorado)	Capacity	RATES (American Plan unless otherwise indicated)		1948 Season
				Per Day	Per Week	
Baldpate Inn	Gordon Mace	Estes Park	60	\$7.00-10.00	\$49.00-65.00	June 12-Sep. 15
Bear Lake Lodge	E. B. Bishop	Estes Park	75	\$6.10-10.10	\$42.70-70.70	June 15-Sep. 15
The Brinwood	Fred Steffens	Estes Park	90	\$6.00-9.75	\$37.50-59.75	June 15-Sep. 15
Columbine Lodge	Mrs. Z. Greenwood	Estes Park	80	\$7.00-8.00	\$45.00-50.00	June 15-Sep. 15
Corner Cupboard Inn	H. W. Rhone	Grand Lake	150	\$6.00-15.00	\$42.00-63.00	June 15-Sep. 20
The Crags	Mrs. Joe Mills	Estes Park	200	Rates on app.	Rates on app.	
Crystal Springs Lodge	Charles A. Fouts	Allen's Park	30	Rates on app.	Rates on app.	May 1-Oct. 1
Daven Haven Lodges	Lester H. Piper	Grand Lake	100	\$8.00 up	\$55.00 up	June 1-Sep. 20
Elkhorn Lodge	Howard P. James	Estes Park	180	\$6.50-9.00	May 30-Sep. 6
Estes Park Chalet-Ranch	Rocky Mtn. Mot. Co.	Estes Park	300	Rates on app.	Rates on app.	June 15-Sep. 15
Fall River Lodge & Ranch	J. R. McKelvey	Estes Park	100	\$7.00 up	\$44.00 up	June 1-Sep. 26
Fern Lake Lodge	E. B. Bishop	Estes Park	40	\$10.00-12.00	\$70.00-84.00	July 1-Sep. 1
Forest Inn	Frank D. Tecker	Estes Park	35	\$5.25-7.50	\$30.00-45.00	June 25-Sep. 6
Grand Lake Lodge	Rocky Mtn. Mot. Co.	Grand Lake	300	Rates on app.	Rates on app.	June 15-Sep. 15
Hewes-Kirkwood Inn	Paul Nesbit	Allen's Park	50	Rates on app.	Rates on app.	
Hupp Hotel	Frank Shepherd	Estes Park	60	(E) \$2.50 up	May 1-Nov. 1
Lake Shore Cottages	H. W. Rhone	Grand Lake	150	\$8.00-20.00	\$42.00 up	June 12-Sep. 28
Longs Peak Inn	Felton, Inc.	Estes Park	125	\$7.50 up	\$45.00-65.00	June 15-Sep. 15
National Park Hotel	Mrs. H. R. Byerly	Estes Park	40	(E) \$3.00-6.00	\$18.00-36.00	Open all year
Phantom Valley Ranch	Irwin S. Beattie	Grand Lake	60	\$49.00-55.00	June 12-Sep. 12
Pines Cottages	Mrs. W. E. Todd	Grand Lake	50	(E) \$2.00 up	Rates on app.	May 1-Oct. 10
Prospect Inn	Edward Boroff	Estes Park	70	\$1.75 up	\$16.00-35.00	May 29-Sep. 6
Riverside Hotel	Ted Jelsema	Estes Park	30	(E) \$2.00 up	Rates on app.	May 25-Oct. 1
Sherwood Hotel	J. F. Long	Estes Park	50	(E) \$2.00 up	Rates on app.	May 1-Oct. 15
Sprague's Lodge	E. M. Stopher	Estes Park	75	\$5.25 up	\$36.75-56.00	June 1-Sep. 30
Stanley Hotel	Sam Stewart	Estes Park	300	(E) \$8.00 up	June 1-Sep. 15
Stapp's Lakes Lodge	John & Bill Stapp	Ward	50	\$7.50 up	\$52.50 up	June 20-Sep. 10
Stead's Guest Ranch	W. G. Lewis	Estes Park	300	\$6.00 up	\$38.50 up	May 30-Sep. 10
Voelkel's Glacier Lodge	Grover Voelkel	Estes Park	150	Rates on app.	Rates on app.	
Wild Basin Lodge	Chas. Hotz	Allen's Park	100	Rates on app.	Rates on app.	
Wind River Ranch	Helen Hutchinson	Estes Park	40	\$65.00-75.00	June 15-Oct. 15
Y.M.C.A. Conference	Lisle T. Ware	Estes Park	800	Rates on app.	Rates on app.	June 1-Sep. 6
E—European Plan						

DENVER HOTELS

Hotel	Capacity, Rooms	Minimum Daily Rates		Hotel	Capacity, Rooms	Minimum Daily Rates	
		Without Bath	With Bath			Without Bath	With Bath
Adams	125	\$1.50-2.00	\$2.50-4.50	Lancaster	100	\$1.50 up	\$2.50-4.00
Albany	330	\$2.00	\$2.00-6.00	Mayflower	100	\$1.50-2.00	\$2.50-4.00
Ambassador	100	\$1.50-2.00	\$2.00-3.00	Midland	59	\$1.00-2.50	\$1.50-3.50
Argonaut	160	\$1.50-2.50	\$2.50-4.00	Mills	60	\$1.00-2.00	\$2.00-3.00
Auditorium	200	\$1.50 up	\$2.50 up	Newhouse	75	\$1.50-2.00	\$2.00-3.00
Ayres	75	\$1.50 up	\$2.00 up	Olin	175	\$2.50-4.00
Brown Palace	325	\$3.50 up	Oxford	250	\$1.50-2.00	\$2.00-3.50
Colburn	200	\$2.50-4.00	Park Lane	220	\$4.00 up
Colorado	100	\$1.50-2.00	\$2.00-3.00	Plaza	75	\$1.50	\$2.50-4.00
Cory	100	\$1.50	\$2.50 up	Roosevelt	200	\$1.50	\$2.00 up
Cosmopolitan	460	\$3.50-6.00	Sears	100	\$1.50-2.00	\$2.00-4.00
Crest	114	\$1.25 up	\$2.00 up	Shirley-Savoy	400	\$1.75-3.00	\$2.75-6.00
DeSoto	75	\$1.75-2.00	\$2.50 up	Standish	150	\$1.25 up	\$2.00 up
Dover	100	\$1.25-1.75	\$2.00-3.00	Tours	60	\$1.00-1.50	\$2.00 up
Eleventh Avenue	96	\$1.00-2.00	\$2.00-3.50	Wellington	75	\$1.50-2.00	\$2.50-3.50
Erhard	60	\$1.00-1.50	\$1.50-2.00	West	120	\$1.00-1.50	\$1.50-3.00
Hall	200	\$1.50	\$2.50-3.00	West Court	140	\$1.50-2.00	\$2.00-3.50
New Kenmark	120	\$1.50-2.50	\$2.00-3.00	Wynne	100	\$1.50 up	\$2.00-3.00

COLORADO SPRINGS HOTELS

Hotel	Capacity, Rooms	Minimum Daily Rates		Hotel	Capacity, Rooms	Minimum Daily Rates	
		Without Bath	With Bath			Without Bath	With Bath
*Acacia	150	\$4.00 up	\$7.00 up	#*Broadmoor	400	\$11(S), \$19(D) up	
*Alamo	200	\$3.50(S), \$5.50(D) up	Cheyenne	50	\$2(S), \$4(D) up	\$3(S), \$5(D) up
*Albany	60	\$3.00 up	\$4.00 up	Joyce	75	\$2.00 up	\$3.00 up
*Alta Vista	150	\$4.00 up	\$5.00-8.00	*Plaza	125	\$2(S), \$3(D) up	\$3(S), \$5(D) up
*Antlers	301	\$5.50(S), \$10(D) up	Rex	50	\$2.00-3.00	\$4.00-5.00
Arrow	50	\$1.50-2.50	\$3.00-6.00	*June thru Sept.-special winter rates. #American Plan.			

PUEBLO HOTELS

Hotel	Capacity, Rooms	Minimum Daily Rates		Hotel	Capacity, Rooms	Minimum Daily Rates	
		Without Bath	With Bath			Without Bath	With Bath
Congress	200	\$1.75	\$3.00	Vail	100	\$2.00	\$3.00
Maine	63	\$1.75	\$3.00	Whitman	150	\$2.50	\$3.50

NOTE: Data on Hotels, Resorts, Ranches and Camps as shown on this and the following pages has been compiled and checked as carefully as available sources of information permit. Such information, however, is necessarily subject to change without notice and the Burlington Lines cannot be responsible for its current accuracy.

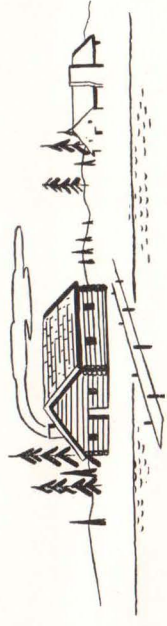
Dude and Guest Ranches



Name	Manager	P. O. Address (Colorado)	Capacity	RATES (American Plan) Per Week	Other Information
*A Bar H Ranch	P. W. House	Nederland	40	\$40.00 up	Alt. 8300—In Boulder Glacier Region—Ranch house, cabins; riding, hiking, fishing, dancing. Open June 1-Oct. 1—to some extent in winter. May 15-Oct. 31. In No. St. Vrain Canyon—Lodge, cabins; riding, fishing, hiking.
B Bar Z Guest Ranch	J. Zunz	Lyons	45	\$50 wk.	Alt. 8600—Cattle ranch—modern ranch houses; fishing, swimming, hiking, pack trips, hunting. Rate includes horse. Open June 15-Oct. 1.
Black Mountain Ranch	Dick Floyd	Red Feather Lakes	10	\$75.00	Cattle and horse ranch in Pikes Peak region, open all year—lodge cabins, pack trips, fishing, swimming, tennis. Rates include horse.
*Bridle Bit Guest Ranch	George Morris	Box 1089 Colorado Springs	48	\$65.00 up	Alt. 8000—Operated as stock ranch for 60 years in Pikes Peak region—ranch house and cabins—rates include saddle horse. Open June 1-Oct. 1.
*Brockhurst Ranch	H. W. Brockhurst	Green Mountain Falls	30	\$65.00	Alt. 7500—A complete mountain vacation in log cabins. Rates include riding, pack trips, hiking, fishing, sight-seeing trips, etc. Open June 25-Oct. 1.
Buckhorn Mtn. Guest Ranch	John M. Smethurst	Loveland	40	\$50.00-\$75.00	Alt. 8000—Guest Ranch on Frying Pan River—lodge, cabins; horses, fishing, pack trips. Open June 1-Sept. 1. Limited service in deer season.
Diamond G Ranch	F. McLaughlin	Basalt	35	\$60.00	Alt. 8300—cattle ranch—lodge, cabins, with bath—registered horses, fishing, pack trips, hot sulphur springs and swimming pool nearby. Rates include horse. Skiing. Open all year.
*Drowsy Water Ranch	Deane Glessner	Hot Sulphur Springs	60	\$75.00-\$85.00	Alt. 7000—In the San Juan Basin. Lodge, cabins; riding, hiking, fishing, pack trips, swimming, dancing, etc. Open May-September.
*El Rancho Encantado	R. E. Venuti	R.F.D. No 1 Durango	40	Rates on app.	Alt. 8300—In Grand Lake region near Rocky Mtn. Natl. Park—operating cattle ranch—ranch house and cabins—rates include saddle horse. Open June 1-Sept. 30.
*Fisherancho	Redwood Fisher	Grand Lake	20	\$70.00 up	Alt. 6850—Cattle ranch. Ranch house, cabins; range riding, roundups, fishing, hunting. Rates include horse. Open all year.
*Focus Ranch	J. B. Temple	Columbine	25	\$55.00-\$75.00	Alt. 7000—In the heart of the Pike Natl. Forest. Ranch house, cabins; riding, fishing, pack trips, tennis, dancing, swimming. Open June 1-Nov. 1. Winter address: Bob Harman, P.O. Box 1181, Denver 1, Colo.
*Graham's Lost Valley Ranch	Hugh Graham	Sedalia	50	\$65.00 up	Alt. 8000—33 mi. SW Denver, 1250 Acres. Main lodge and guest houses. Open all year. Riding, hiking, fishing, golf. Skating and big game hunting in season.
*Greystone Ranch	W. R. Sandifer	Evergreen	45	\$65.00-\$125.00	Alt. 8100—Northeastern Colorado—adj. Rocky Mtn. Natl. Park—ranch house, cabins; horses. Open June 26-Sept. 15. Winter address: 300 E. 57th St., Apt. 13D, New York City.
*H Bar G	Helen Gates	Estes Park	50	\$70.00-\$80.00	Alt. 9000—In Rocky Mtn. Natl. Park, 10 mi. from Grand Lake. Open June 15-Sept. 15—lodge, cabins; rodeos, pack trips, fishing.
*Holzwarth Ranch	J. G. Holzwarth	Grand Lake	50	\$45.00 up	
Page 42					
*Lake Trail Guest Ranch	H. L. Greear	Steamboat Springs	30	\$45.00-\$60.00	Alt. 7000—Northwestern Colorado—Lodge, cabins; horses, fishing, hunting, skiing—open year-around.
*Lone Cow Ranch	Milton W. Baumgarten	Kremmling	18	\$50.00-\$60.00 up	Northern Colorado—Ranch house, cabins; riding, fishing, swimming. Family rates. Open June 1-Sept. 15.
*Lucky G J Ranch	Margaret Smith & Edith Eidem	Gypsum	30	\$35.00-\$65.00	Alt. 6300—At junction Sweetwater Creek & Colorado River—Lodge, cabins; fishing, pack trips, trail rides. Open all year.
*McGraw	Irene McGraw	Estes Park	40	\$50.00-\$70.00	Alt. 7500—Northeastern Colorado—adj. Rocky Mtn. Natl. Park. Ranch house, cabins; horses. Open June 1-Oct. 1.
*Onahu Ranch	Clyde Sargent	Grand Lake	30	\$55.00-\$75.00	Season June 1-Sept. 15. Winter address: 4244 N. Longview, Phoenix, Arizona.
*Phantom Valley Ranch	Irwin S. Beattie	Grand Lake	60	\$49.00-\$55.00	Alt. 9100—near Grand Lake in Rocky Mtn. Natl. Park. June 12-Sept. 12. Lodge; riding, fishing. Winter address: 690 Bellaire, Denver.
*Rivercliff Ranch	Pete Smythe	Bailey	20	Rates on app.	Guest Ranch in Pike National Forest near Mr. Evans. Fishing, riding, pack trips. Open June 15-Sept. 15.
*Saddle Pocket Ranch	R. D. Salisbury	Slater	20	\$60.00-\$70.00	Alt. 6700—in northwestern Colorado. Cattle ranch. May 15-Sept. 30. Cabins; roundups, fishing, pack trips, hunting.
*Seven-W Ranch	Lee Savage	Gypsum	12	\$55.00	Alt. 8700—In White River National Forest. Lodge, cabins; pack trips, fishing. Open June 1 through hunting season (Nov. 1).
*Sky Ranch	Dalton Verry	Bellevue	30	\$65.00	Alt. 9000—In Northern Colorado. Lodge, cabins. Fishing, riding, hiking. Open June 1-Sept. 15.
*Snowshoe Ranch	F. J. Kasdorf	Kremmling	28	\$45.00-\$65.00	Alt. 8500—Cattle ranch near Continental Divide. Fishing, pack trips, riding—ranch house and cabins. Open June 1-Oct. 21.
*Sportsland Valley Ranch	H. C. Cook	Winter Park	40	\$65.00-\$75.00	Alt. 9000—near Continental Divide. Lodge; pack trips, fishing, boat. ing. Season May 15-Oct. 15.
*Spread Eagle Ranch	Albert H. Peek	Westcliffe	40	Rates on app.	Alt. 8200—adj. Sangre de Cristo Range, San Isabel Natl. Forest—main lodge, club house, cabins with bath; fishing, riding, hunting. Open June 15-Sept. 15.
*Tarryall River	Ray Landis	Lake George	40	\$75.00	Alt. 8200—In Pikes Peak region—May 1-Nov. 1; ranch house, cabins; horses, fishing, hunting, pack trips, hiking. Rates include horse.
*T Bar S Guest Ranch	Mrs. J. Fred Brown	Evergreen	25	Rates on app.	Ranch house, Swiss chalets; riding, fishing, golf. Open June 25-Sept. 15.
*T Lazy 7 Ranch	Lou & Had Deane	Aspen	25	\$75.00	Alt. 7800—Lodge, cabins; pack trips, chuck-wagon dinners, rodeos, riding, hiking, fishing. Rates include exclusive use of saddle horse.
*Trail Creek Ranch	R. J. Swan	Livermore	12	\$60.00	Alt. 7200—Northern Colorado. Ranch house. Rate includes saddle horse. Pack trips, rodeos, fishing, hunting. Open June 1-Nov. 1.
*Two Bars Seven Ranch	Ted Schaffer	Virginia Dale	15	\$65.00	Alt. 7500—Cattle ranch in Northern Colorado. Ranch house, riding, hiking, fishing, roundups, rodeos, pack trips. Open June 1-Oct. 31.
*Tumbling River Ranch	Keyes & Allard	Grant	30	\$65.00-\$75.00	Alt. 9150—In Pike Natl. Forest. Lodge, cabins. Riding, hiking, fishing, pack trips. Skiing in season. Rates do not include horse. Open all year.
*UT Bar Ranch	R. M. Leake, Jr.	Jelm, Wyo.	20	\$65.00 up	Alt. 7950—Cattle and horse ranch—fishing and pack trips. Ranch house, cabins—rates include saddle horse. Open June 10-Sept. 30.
Woods Lake	Bowles Bros.	Troutville	75	\$45.00 up	Alt. 9100—Central Colorado on Woods Lake near Mount of Holy Cross. Open June 1-Nov. 1. Lodge, cabins; horses, pack trips, fishing.

*Member Colorado Dude and Guest Ranch Association—Secy. John Holzwarth, Grand Lake, Colo.

Boys' Vacation Camps



Name	Director	P. O. Address (Summer) (Colorado)	Capacity	Rates†	Ages	Other Information	Winter Address
Camp Holy Cross	Rev. E. J. Vollmer, O.S.B.	Canon City (Box 351)	75	7 wks. \$328	8-14	Operated by the Benedictine Monks of Colorado. All sports including horseback riding, pack trips, swimming and Indian lore. June 29-Aug. 17.	Camp Holy Cross Canon City, Colo.
Camp Trojan Ranch— Chipmunks Camp Adventurers Camp Explorers Camp	G. S. Walker	Boulder	{ 25 25 25	{ \$250 each 5-wk. term \$250 each 5-wk. term \$250 each 5-wk. term	{ 9-10 11-13 14-17	Season June 5-Aug. 30. Riding, hiking, fishing, boating, swimming, special tours, auto & pack trips, horsemanship, archery and crafts.	P.O. Box 685, Tyler, Tex.
Cheley Colorado Camps— Camp Haystack Camp Ski-Hi Lower Ski-Hi Trail's End Ranch							
	J. A. Cheley E. E. Altick	Estes Park	{ 59 52 40 52	{ \$250 each 5-wk. term \$250 each 5-wk. term \$250 each 5-wk. term \$185 each 5-wk. term	{ 13-17 11-12 9-10 12-17	Season June 16-Aug. 24—(see Note 2, page 45).	601 Steele St. Denver, Colo.
Ralston Creek Ranch	Stephen B. Strang	Golden	28	4 wks. \$250, 8 wks. \$462	Prep school for boys. Open all year. Main summer season June 28-Aug. 25.	
Rocky Mt. Boys' Camp	D. C. Primrose	Estes Park	40	8 wks. \$400	In Rocky Mt. Natl. Park, June 25-Aug. 20—lodge, cabins; athletics, pack trips, riding.	1499 Lincoln Ave. St. Paul, Minn.
Roundup Lodge for Boys	Dr. E. A. Marquard	Buena Vista	100	Rates on app.	11-17	In central Colorado, 8 wk. term—lodge, cabins; athletics, pack trips, swimming pool. Open June 30-Aug. 26.	66 Lake Forest Dr. Clayton 17, Mo.
Silver Spur Ranch	Lee B. Hermann	Woodland Park	...	8 wks. \$450	8-16	Season June 25 to Aug. 20. Alt. 7000—cattle ranch—pack trips, rodeo, swimming, all sports.	Woodland Park, Colo.
*Two Bars Seven Ranch	Ted Schaffer	Virginia Dale	15	\$65 per wk.	Alt. 7800—Cattle ranch in Roosevelt Natl. Forest—ranch house; fishing, hiking, riding, pack trips, chuckwagon parties, rodeo. Open June 1-Oct. 31.	Virginia Dale, Colo.
Y.M.C.A. Boys' Camp (Camp Chief Ouray)	William A. Worthmann	Granby	140	\$23 wk.	10-18	On Colorado River, June 12-Aug. 21—lodge, cabins; recreation hall, 5 terms 2 wks. each.	Y.M.C.A. Denver, Colo.

*Member, Colorado Dude and Guest Ranch Association.

†Rates shown on American plan include board, room, and (in some cases) transportation to and from nearest railway station.

Page 44

Girls' Vacation Camps



Name	Director	P. O. Address (Summer) (Colorado)	Capacity	Rates†	Ages	Other Information	Winter Address
Jean Sherwood Cottage Bluebird Lodge	Miss E. M. Tracy	Boulder Gold Hill	{ 20 65	\$25 wk.	(Note 1)	Cottage in Boulder city open the year round; lodge in mountains of Boulder-Glacier district.	Josephine Loonem C. B. & Q. R. R., Adams at Clark, Chicago, Ill.
Camp Lookout							
Camp Trojan Ranch— Junior Camp Senior Camp	G. S. Walker	Boulder	{ 25 25	{ \$250 each 5-wk. term \$250 each 5-wk. term	{ 9-13 14-17	Season June 5-Aug. 30. Riding, hiking, fishing, boating, swimming, special tours, auto & pack trips, horsemanship, archery and crafts. Winter address: P.O. Box 685, Tyler, Tex.	Eastern Colorado—June 25-Aug. 6—Lodge, tent-cabins; horses, tennis, archery, crafts, athletics. Winter address: 1345 Tremont Pl., Denver.
Cheley Colorado Camps— Lower Chipeta Camp Chipeta Chipeta Senior Trail's End Ranch							
	J. A. Cheley E. E. Altick	Estes Park	{ 25 69 50 52	{ \$250 each 5-wk. term \$250 each 5-wk. term \$250 each 5-wk. term \$185 each 5-wk. term	{ 9-11 12-14 15-17 12-17	Season June 19-Aug. 27—(see Note 2).	601 Steele St. Denver, Colo.
Perry Mansfield— Junior Intermediate Seniors College age	Charlotte Perry Portia Mansfield	Steamboat Springs (after June 1st)	{ 25 25 65 30	{ July 2-Aug. 27 \$490—Exclusive use of horse \$75 extra \$435 with- out riding (college unit)	{ 8-12 13-14 15-20 18	Northwestern Colorado—lodges, cabins. Instructors in Eastern and Western riding, swimming and tennis; dance, drama, music, stage production and art. Auto trips, pack trips. Horsemanship and Counselor Training Courses. Winter address: 216 E. 70th St., New York 21, N.Y.	Woodland Park, Colo.
Quarter Circle H Ranch							
	Mrs. Lee B. Hermann	Woodland Park	50	8 wks. \$495	13-18	In Pike Natl. Forest, 8 wk. season (July 1-Aug. 25)—lodge, cabins; individual optional program; swimming, tennis, golf, rodeo.	
San Luis Ranch	Mrs. R. K. Potter	Colorado Springs	60	Season \$400	6-15	In Pikes Peak region—July 1-Aug. 26—accommodations at San Luis School. All activities elective—swimming, tennis, art crafts, mountain trips, horse show, rodeo, dancing, dramatics. Rates include riding and all expenses.	
Triangle L. Ranch	Mrs. Robert K. Potter	Buford	30	Season \$400	6-15	In White River National Forest—June 24-Aug. 19—Lodge and cabins; excellent fishing; horses, pack trips. Winter address until June 15; San Luis Ranch, Colorado Springs Colo.	

†Rates shown on American plan include board, room, and (in some cases) transportation to and from nearest railway station.

NOTE 1. For self-supporting Chicago girls and women.

NOTE 2. CHELEY COLORADO CAMPS—FOR BOYS AND GIRLS: The Cheley Colorado Camps are located on the Land O'Peaks Ranch, five miles south of Estes Park, adjoining Rocky Mountain National Park. Activities are under a large group of trained instructors and counselors (one to each 4 campers), all under the direction of J. A. Cheley. Chief object of the camps is to provide a vacation both enjoyable and educational with well-balanced daily programs of supervised play and instruction . . . including camp craft, woodcraft, geology, archery, forestry, botany, horsemanship, swimming, simple surveying, fishing, hikes and nature rambles. Camps are segregated as to boys and girls, and further divided as to ages.

Page 45

Hotels and Resorts - GENERAL LIST



Postoffice, County— Hotels, Resorts, etc.	Manager	Capacity	RATES (American Plan unless otherwise indicated) Per Day Per Week		Other Information
ALAMOSA (Alamosa Co.)—Alt. 7346—On Rio Grande River, in southern Colorado, near Great Sand Dunes Natl. Monument.					
San Luis Hotel	Robert McNamee	40 Rooms	(E) \$2.00 up		Open all year.
Victoria Hotel	J. J. McNamee	75 Rooms	(E) \$1.75 up		Open all year.
Walsh Hotel	J. T. Walsh	48 Rooms	(E) \$1.50 up		Open all year.
ANTONITO (Conejos Co.)—Alt. 7888—In San Luis Valley, southern Colorado, near Rio Grande Natl. Forest.					
Palace Hotel	Tony Lucero, Jr.	20 Rooms	(E) \$1.50 up		
ASPEN (Pitkin Co.)—Alt. 7913—Famous silver-mining district of central Colorado, in Holy Cross National Forest—adj. highest peaks in Colorado.					
Hotel Jerome	Charles O. Bishop	250 Rooms	\$7.00 up		Open all year. Hotel, cottages.
			(E) \$3.00 up		
BLACK HAWK (Gipin Co.)—Alt. 9000—Famous old mining camp, site of early Gregory diggings.					
Gipin Hotel	Orto O. Blake	40 Rooms	\$2.50 up	Rates on app.	Open all year.
Heidi Chalet	Mrs. N. Swarthout	25	\$4.50 up	\$25.00 up	June 15-Sept. 15. Lodge, cabins.
BOULDER (Boulder Co.)—Alt. 5350—Gateway to Boulder-Glacier region; University of Colorado (summer school) (See also Gold Hill, Colo.)					
Albany Hotel	R. J. Bush	120 Rooms	(E) \$1.25 up	(E) \$4.00 up	In Boulder City—swimming pool. Open all year.
Alps Hotel	Victor Shruve	50	\$6.25 up	\$40-\$50 up	In Boulder Canyon. Riding, swimming, tennis, golf. Open all year.
Arlington Hotel	J. C. Oliver	40 Rooms	(E) \$1.00 up		In Boulder City. Open all year.
Blanchard Lodge	J. C. Doherty	35	\$5.00 up	\$30.00 up	In Boulder Canyon. Open April 1-Jan. 1.
Bluebird Cottage—(see Girls' Camps)					
Boulderado Hotel	W. G. Huson, Jr.	100 Rooms	(E) \$1.50 up		In Boulder City. Open all year.
Colorado Chataqua	F. A. Boggess	400		Rates on application	June 15-Sept. 15. On outskirts of city—50 cottages, 2 lodges; auditorium, dining hall, community house. Winter address: 2331 Broadway, Boulder, Colo.
Monticello Hotel	Dr. O. T. Nuttall	75 Rooms	(E) \$1.50 up		In Boulder City. Open all year.
BROOK FOREST (Jefferson Co.)—Alt. 8000—In Denver Mountain Parks.					
Brook Forest Inn	Chris R. Maurer	50 Rooms	\$8.50 up	\$57.50 up	Swiss chalets, cottages, recreation hall; tennis, horses. Open April 1-Dec. 1.

Page 46

CANON CITY (Fremont Co.)—Alt. 5344—On Colorado River, adj. Royal Gorge and Suspension Bridge—mineral springs and baths.					
Canon Hotel	F. N. Wildgen	60 Rooms	(E) \$1.50 up		Open all year.
Strathmore Hotel	Mrs. C. O. Hobbs	100 Rooms	(E) \$1.50 up		Open all year.
CASCADE (El Paso Co.)—Alt. 7500—In Pikes Peak district.					
Easthome Hotel	Mr. & Mrs. D. W. Wikander	15 Rooms	\$5.00 up		June-Sept.
CEBOLLA (Gunnison Co.)—Alt. 7354—On Gunnison River, western Colorado.					
Sportsman's Lodge	Wandell & Hart	50	\$12.00-15.00	\$75.00-90.00	May 25th-Nov. 1st—Lodge, cabins; saddle horses, pack trips, fishing, hunting.
CENTRAL CITY (Giplin Co.)—Alt. 8560—Famous gold-mining district—Annual Plan Festival in Old Opera House (July)					
Teller House		75 Rooms	\$4.00 up		Picturesque hotel of early mining days. Open June 15-Sept. 1.
CRAWFORD (Delta Co.)—Alt. 7500—Gunnison National Forest, western Colorado.					
Hawks Nest Ranch	Guy Hawk	20	\$10.00	\$65.00	Lodge; horses, pack trips, fishing, hunting. Open May 1-Nov. 15.
CREEDE (Mineral Co.)—Alt. 8844—Famous silver-mining camp on Rio Grande River, southwest Colorado.					
New Antlers Park Resort	Hohnbaum & Bruns	80	\$3.50 up	\$21.00 up	April 15 to Oct. 15—hotel, cabins. Trout fishing, hunting.
DECKERS (Douglas Co.)—Alt. 6666—Fishing resort on South Platte River in Pike Natl. Forest—mineral springs.					
Deckers Springs Fishing Resort	Harry Homeyer	100	\$5.50 up		Cabins; fishing, hunting. Open all year.
Grandview Lodge	Mrs. M. A. Poston	75	\$3.50	\$18.00 up	May 1-Dec. 1—Lodge, cabins; fishing, horses, dancing, hunting (deer).
DELTA (Delta Co.)—Alt. 4980—Western Colorado on Gunnison and Uncompaggre River, near Uncompaggre and Grand Mesa Natl. Forests.					
Delta House	L. F. Young	44 Rooms	(E) \$1.50 up		Near Black Canyon of the Gunnison Natl. Monument. Open all year.
DURANGO (La Plata Co.)—Alt. 6520—Southwest Colorado on Animas River—gateway to Mesa Verde Natl. Park.					
Savoy Hotel	Mrs. W. H. Mitchell	40 Rooms	(E) \$1.50 up	(E) \$5.00	Open all year.
Durango Hotel	Ruby Knowles	45 Rooms	(E) \$1.50 up		Open all year.
Strater Hotel	J. A. Segerberg	125 Rooms	(E) \$3.00		Open all year.
EMPIRE (Clear Creek Co.)—Alt. 8245—In famous Clear Creek mining district.					
Glen Arbor Lodge	Miss A. Guanella	40	(E) \$4.50	(E) \$22.50	Open all year.

Page 47

(List continued on next page)

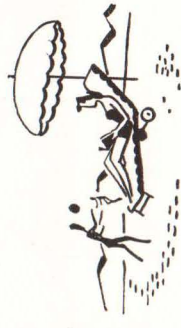
Hotels and Resorts - GENERAL LIST (CONTINUED)



Postoffice, County— Hotels, Resorts, etc.	Manager	Capacity	RATES (American Plan unless otherwise indicated) Per Day Per Week		Other Information
EVERGREEN (Jefferson Co.)—Alt. 7500—In Denver Mountain Parks, on Bear Creek—Evergreen Lake—Golf.					
Marshdale Lodge	S. E. Livingston	75	\$6.50 up	\$45.00-\$55.00	Lodge, cottages; horses, tennis, golf, guides. Open May 30-Sept. 30.
Singin' River Ranch	E. Poindexter	25	\$8.00 up	\$50.00-\$55.00	Cottages; riding, fishing, hunting, golf, tennis. Open all year.
Troutdale-in-the-Pines	150 Rooms	\$10.00 up	Hotel; outdoor swimming pool, horses, tennis. Open June 15-Sept. 16.
FAIRPLAY (Park Co.)—Alt. 9964—Old placer mining district, in Pike Natl. Forest—winter sports.					
Fairplay Hotel	N. J. Hand	50 Rooms	(E) \$2.00 up	Hunting, fishing. Open all year.
FORT COLLINS (Larimer Co.)—Alt. 5000—Northern gateway to Colorado vacation regions, Poudre Canyon resorts, Roosevelt Natl. Forest—Colorado Agricultural College—golf club.					
Anders Hotel	C. H. Bohnke	40 Rooms	(E) \$2.00 up	Open all year.
Armstrong Hotel	Quinlan & Warnock	80 Rooms	(E) \$1.50 up	Golf. Open all year.
Northern Hotel	Ace Gillett	130 Rooms	(E) \$1.50 up	Open all year.
FOXTON (Jefferson Co.)—Alt. 7020—Platte River Canyon Resort in Pike Natl. Forest.					
Foxton-on-the-Platte	A. A. Armstrong	40	(E) \$10.00-\$25.00	Cabin accommodations; horses, fishing. Open May 1-Oct. 1.
Idlelease Guest Ranch	William A. Torgerson	40	\$5.00 up	\$35.00 up	June 1-Sept. 15—ranch house, cabins; horses, tennis, fishing.
GLENWOOD SPRINGS (Garfield Co.)—Alt. 5758—On western slope of Rockies—adj. White River Natl. Forest—mineral springs, golf.					
Hotel Colorado	Howard F. Hohl	250 Rooms	(E) \$3.00 up	Open all year—swimming, tonic baths, horseback riding, sightseeing, golf, tennis, fishing, hunting, skiing.
Denver Hotel	M. C. Bosco	90 Rooms	(E) \$2.00 up	Horses. Open all year.
GOLD HILL (Boulder Co.)—Alt. 8300—Mountain resort in Boulder-Glacier district. (See also Boulder, Colo.)					
Bluebird Lodge—(see Girls' Camps)	Walter Phelps	45	\$8.00	\$45.00 up	June 1-Sept. 15—hotel, cottages; horses, fishing.
GRANBY (Grand Co.)—Alt. 7935—On Fraser River, adj. Rocky Mountain Natl. Park.					
C Lazy U Ranch	R. L. Schoenberger	44	\$14.00	\$90.00	Fishing, riding, hunting. Rates include horse. Open all year.
Shadow Mt. Ranch	Paul Carmichael	35	\$65.00	Lodge and mountain cabins. Fishing, riding, chuck-wagon dinners and pack trips. Rates include horse. Open June 1-Oct. 31.
GRAND JUNCTION (Mesa Co.)—Alt. 4583—Western Colorado, at junction Gunnison and Colorado Rivers, gateway to Colorado Natl. Monument, Grand Mesa Natl. Forest.					
La Court Hotel	J. M. Conway	150 Rooms	(E) \$1.75 up	Open all year.
St. Regis Hotel	H. E. Burnett	75 Rooms	(E) \$1.75 up	Open all year.
GREELEY (Weld Co.)—Alt. 4651—Northern Colorado, on Cache la Poudre River;—Colorado State Teachers College (summer school)—Annual rodeo (July).					
Camfield Hotel	John Kochenburger	128 Rooms	(E) \$1.50 up	(E) \$9.00 up	Open all year.
Sterling Hotel	Inez J. O'Brien	60 Rooms	(E) \$1.75 up	Open all year.
GREEN MOUNTAIN FALLS (El Paso Co.)—Alt. 7843—In Pike Peak district on Ute Pass.					
Terrace Hotel	Frank Bangs	20 Rooms	\$5.00	\$32.00-\$45.00	Open June 27-Sept. 1.
Hotel Outlook	R. W. Samuel	20 Rooms	\$5.00 up	\$30.00-\$40.00	Special rates for children. Open June 15-Sept. 15.
GUNNISON (Gunnison Co.)—Alt. 7683—Western Colorado, on Gunnison River, adj. Gunnison Natl. Forest—Western State Teachers College—hunting, rodeo and fishing.					
Allen Hotel	Ted McCorkhill	40 Rooms	(E) \$2.50	Open all year.
Columbine Hotel	Garland Watters	30 Rooms	(E) \$1.50 up	Open all year.
Cottonhurst-on-the-Gunnison	H. F. Trampe	Rates on application.	Cabins—fishing, hunting. Open July 1-Sept. 10.
Gunnison Hotel	Mrs. E. O. Willson	20 Rooms	(E) \$2.00 up	Open all year.
HOT SULPHUR SPRINGS (Grand Co.)—Alt. 7665—Central Colorado, adj. Arapahoe Natl. Forest—hot mineral springs, swimming pool, winter sports.					
Riverside Hotel	F. A. Qualls	30 Rooms	(E) \$2.00 up	(E) \$12.00 up	Open all year.
Silver Spruce Hotel	Mr. & Mrs. K. Sloan	25 Rooms	(E) \$2.00 up	(E) \$12.00 up	Near Hot Sulphur Baths and Snow King Valley Ski Area. Open all year.
IDAHO SPRINGS (Clear Creek Co.)—Alt. 7549—In Clear Creek Canyon, famous gold-mining district—radium hot springs and vapor baths.					
Placer Inn	Limited	(E) \$3.00 up	Open May 1-Oct. 1.
Radium Hot Springs Hotel	Hill & Wold	130	(E) \$2.00 up	Hotel, dining room—cottages; radium and vapor baths. Open all year.
The Hanoson Lodge	W. J. Morletti	60	(E) \$2.50 up	Open all year.
JELM, WYO. (Albany Co.)—Alt. 8300—in Roosevelt Forest, extreme northern Colorado.					
Glenderry Lodge	O. H. Elliott	Limited	Rates on application	May 1-Nov. 1—cabins; fishing, pack trips, hunting.
LEADVILLE (Lake Co.)—Alt. 10,200—Highest incorporated city in world—center of historic gold and silver mining region (site of famous Matchless Mine)—near highest mountains in Colorado.					
Vendome Hotel	C. J. Lessard	100 Rooms	(E) \$2.00 up	Fishing, hunting, golf, skiing, winter sports. Open all year.
LONGMONT (Boulder Co.)—Alt. 5000—Gateway to Rocky Mountain Natl. Park.					
Imperial Hotel	Merle E. Burke	60 Rooms	(E) \$1.50 up	Open all year.
LOVELAND (Larimer Co.)—Alt. 4986—Gateway to Rocky Mountain Natl. Park via Big Thompson Canyon.					
Loveland Hotel	Pete Kamla	46 Rooms	(E) \$1.75 up	Open all year.

(List continued on next page)

Hotels and Resorts - GENERAL LIST (CONTINUED)



Postoffice, County— Hotels, Resorts, etc.	Manager	Capacity	RATES (American Plan unless otherwise indicated)		Other Information
			Per Day	Per Week	
LYONS (Boulder Co.)—Alt. 5375—Gateway to Rocky Mountain Natl. Park via St. Vrain routes.					
Burlington Hotel	Peggie Bloomfield	22	(E) \$1.50 up	Open all year.
Point O'Pines Lodge	Katherine & Emma Wolter	38	\$5.00 up	In Allen's Park. Open June 15-Sept. 15—lodge; cabins; riding.
MANITOU SPRINGS (El Paso Co.)—Alt. 6000—Foot of Mt. Manitou and Pikes Peak—Mineral springs and baths.					
Cliff House	Michael J. Kelly	170 Rooms	(A) \$7.00 up	Open May 15-Oct. 16.
Grand View Hotel	J. B. Paulson	100 Rooms	(E) \$3.50 up	Weekly rates. Open June 1-Sept. 10.
			(A) \$7.00 up	
Sunnyside Hotel	Ralph Laizure	50 Rooms	(E) \$2.50 up	Open June 1-Aug. 31.
MEEKER (Rio Blanco Co.)—Alt. 8000—White River National Forest.					
Seven Lakes Camp	C. E. Fulton	24	(A) \$8.00	\$50.00	Cabins; horses, fishing, hunting. Open May 15-Oct. 20.
MONTE VISTA (Rio Grande Co.)—Alt. 7665—Southwest Colorado—Annual San Luis Valley Ski-Hi Stampede Rodeo (August).					
El Monte Hotel	Mrs. R. R. Shaub	50 Rooms	(E) \$2.00 up	Open all year.
La Veta Hotel	J. K. Holmes	28 Rooms	(E) \$1.50 up	Open all year.
MONTROSE (Montrose Co.)—Alt. 5811—Western Colorado, gateway San Juan Mountains, near Black Canyon of the Gunnison—outdoor swimming pools.					
Belvedere Hotel	J. V. Souder	50 Rooms	(E) \$2.00 up	Open all year.
OURAY (Ouray Co.)—Alt. 7721—Western Colorado, famous mining camp in Uncompaggre Natl. Forest, adj. San Juan Mountains—hot and cold mineral springs, outdoor swimming pools, fishing, hunting.					
Beaumont Hotel	E. W. Creel	42 Rooms	(E) \$1.50 up	Open all year.
PAGOSA SPRINGS (Archuleta Co.)—Alt. 7100—Southwest Colorado, in San Juan Natl. Forest—hot mineral springs, baths, pools.					
Los Banos Hotel	H. A. Cates	33 Rooms	(E) \$2.00 up	(E) \$10.00	Open all year.
Metropolitan Hotel	L. E. Martin	36 Rooms	(E) \$2.00 up	Open all year.
PALMER LAKE (El Paso Co.)—Alt. 7237—On Palmer Lake, Pikes Peak region, adj. Pike Natl. Forest.					
Estemere Lodge	William C. Blietz	19 Rooms	Rates on application		Special facilities for vacation groups. Open all year.
Wagon Wheel Guest Ranch	Mrs. W. F. Clausing	20 Rooms	Rates on application		Lodge and cabin accommodations; swimming, tennis, fishing, hunting, horses. Open all year.
PARSHALL (Grand Co.)—Alt. 7655—On Colorado River, West slope of Rockies, adj. Rocky Mountain Natl. Park—near hot sulphur springs.					
Buckhorn Lodge	Hugh Neece	60	\$10.00 up	\$70.00 up	June-Sept. 15—lodge, cabins; swimming, fishing, archery, horses.
PONCHA HOT SPRINGS (Chaffee Co.)—Alt. 7471—In Arkansas Valley, Southern Colorado, near Sangre de Cristo Range—mineral springs.					
Jackson Hotel	Archie Gennow	30	\$2.50 up	Hotel, mineral baths, swimming, fishing.
RAND (Jackson Co.)—Alt. 8390—Northern Colorado on Illinois River, near Rabbit Ear Range.					
Rand Hotel	Mrs. D. Leatherman	40	\$6.00 up	June 1-Oct. 31. Hotel, cabins.
REDSTONE (Pitkin Co.)—Alt. 7000—Western Colorado, valley of the Crystal River.					
Crystal River Lodge	Cook & Higgins	40	\$10.00 up	\$70.00 up	Lodge; fishing, riding, hiking, sightseeing. Open all year. Big game hunting. Skiing, ice skating, tobogganning, sleighing, bob sledding.
RIFLE (Garfield Co.)—Alt. 5310—Western Colorado, gateway to White River Natl. Forest and Meeker country—fishing, hunting.					
Midland Hotel	Roy S. Heck	30 Rooms	(E) \$1.50 up	Open all year.
Coulter Lake Resort	C. F. Coulter	25	\$9.00	\$60.00	Lodge, cabins, fishing, pack trip. Rates include horse. Open June 1-Oct. 1; also for big game hunters in October.
SALIDA (Chaffee Co.)—Alt. 7050—In Arkansas River Valley, adj. Sangre de Cristo Range—fishing, hot mineral baths and indoor swimming pool; winter sports.					
Palace Hotel	D. Ramsey	40 Rooms	(E) \$1.50 up	Open all year.
Sheridan Hotel	Mrs. M. M. Heberer	50 Rooms	(E) \$1.50 up	Open all year.
STEAMBOAT SPRINGS (Routt Co.)—Alt. 6683—Northwest Colorado, gateway to Routt Natl. Forest region—mineral springs, golf, winter sports.					
Glen Eden Guest Ranch	Lloyd Johnson	20	\$7.00 up	\$50.00 up	On Elk River—cabins; horses, fishing, hunting. Open June 1-Sept. 15. Winter address: 4602 Red Road, Coral Gables, Fla.
Harbor Hotel	Ralph Zuschlag	100 Rooms	(E) \$2.50 up	Fishing, riding. Open all year.
Perry Mansfield Ranch Camp	Portia Mansfield Charlotte Perry	25	\$75.00-\$80.00	Operated in conjunction with Perry Mansfield Round-up Camps (see Girls' Camps)—same activities. Lodges, cabins, riding, swimming, tennis and fishing. Hot sulphur baths. Open Aug. 28-Sept. 15. Winter address: 216 E. 70th St., New York 21, N.Y.
TELLURIDE (San Miguel Co.)—Alt. 8756—Famous San Juan mining camp in San Miguel Mountains, western Colorado.					
Sheridan Hotel	A. B. Cause	40 Rooms	(E) \$1.50 up	Open all year.
WAGON WHEEL GAP (Mineral Co.)—Alt. 8439—Western Colorado, on Rio Grande River.					
Hampton Trout Lodge	Howard Hampton	50	\$6.50	\$42.00	June 1-Sept. 30. Lodge and cabins. Pack trips, trout fishing. Elk and deer hunting in season.
Wagon Wheel Ranch	Arthur Sharp	40	\$12.00	\$70.00-\$85.00	Guest ranch in southwestern Colorado; June 12-Sept. 26; pack trips, fishing, swimming, riding.
WARD (Boulder Co.)—Alt. 8000—In Roosevelt Nat. Forest, adj. Rocky Mountain Natl. Park and Boulder-Glacier region.					
Lodge of Pines	Howard & Richards	30	Rates on application.		Cabin accommodations, dining lodge—horses, swimming, fishing. Open July 1-Sept. 15.
WESTCLIFFE (Custer Co.)—Alt. 7861—Southern Colorado, near Sangre de Cristo Range, adj. San Isabel Natl. Forest.					
Alpine Lodge	Briggs & Baker	32	\$7.50 up	\$45.00	Lodge, cabins; horses, steak fries, overnight pack trips. Open June 1-Oct. 20.
WOODLAND PARK (Teller Co.)—Alt. 7000—In Pikes Peak region, adj. Pike Natl. Forest.					
Quarter Circle H Ranch	Lee Hermann	30	\$75.00 up	Cabin accommodations; riding, fishing, hunting. 30 minutes from Colorado Springs. Open all year.
Silver Spur Ranch	50	\$75.00	Cattle ranch open all year—lodge, cabins; range-riding, roundups, rodeos, fishing, hunting, winter sports.
Paradise Ranch	Frank S. Snell, Jr.	100	Rates on application		Guest ranch at the Foot of Pikes Peak—Lodges; horses, pack trips, swimming, tennis, archery, dancing, etc.

Just Overnight from Chicago

VIA THE STREAMLINED DIESEL-POWERED DENVER ZEPHYRS



A trip to Colorado on one of the Burlington's famous Denver Zephyrs will complete one hundred per cent of the possibilities of your western vacation. Diesel-powered and built of stainless steel, these luxurious trains offer every modern travel accommodation plus incomparably smooth speed. Flashing between Chicago and Denver just overnight, they make it possible to "week-end 1000 miles away" with hardly a business hour lost.

Each of the Denver Zephyrs includes a magnificent full-length observation car with solarium lounge; then, in

streamline succession, two luxurious all-room cars (offering chambrettes, roomettes, bedrooms, compartments, drawing rooms); three 12-section Pullmans; an exquisite full-length dining car; delightful chair cars, dinette-coach, and a gay cocktail lounge.

The accommodations and appointments of these representatives of the illustrious Zephyr family create entirely new conceptions of travel comfort and convenience. Each car is individually decorated and upholstered in charming harmonious fashion. There are many innovations—telephone serv-

The exquisite dining car on one of the luxurious Denver Zephyrs.



Denver Zephyr Cocktail Lounge, an ultra smart gathering place enroute.



ice between dining car, observation lounge and cocktail lounge, individual radios for private rooms, 110 volt AC outlets for personal electrical appliances, blue night lights, Venetian blinds in the dining car and cocktail lounge, radio reception, etc.

Coach travel in the Denver Zephyrs is delightfully restful. The chair cars are fully carpeted and have individual reclining seats, large dressing rooms for the ladies, and luggage compartments. Pillows are available at nominal charge. Chair car passengers have access to both dining car and cocktail lounge, as well as the dinette where substantial low-priced meals are served. All seats are subject to reservation and are individually assigned.

Best of all, these Denver Zephyrs are not extra-fare trains.

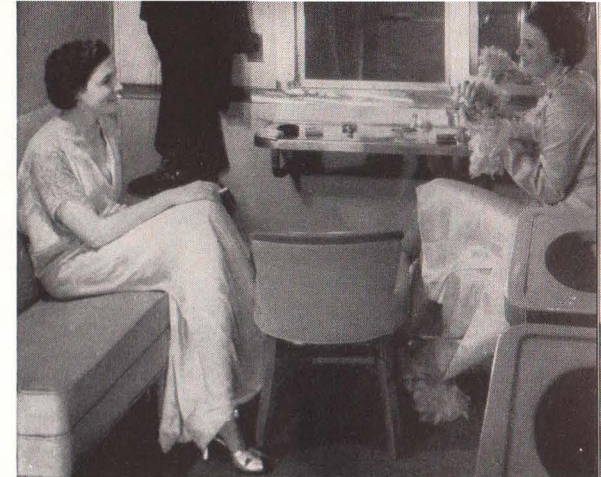
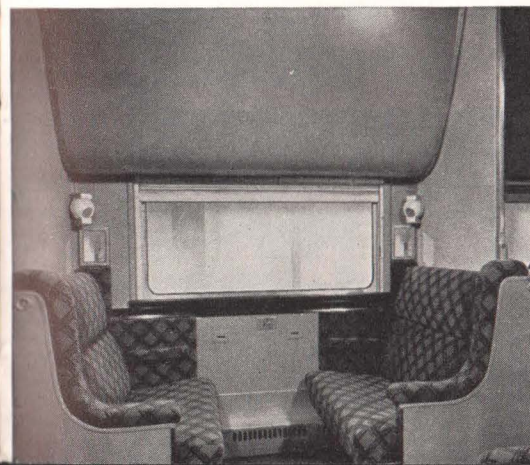
The Exposition Flyer

An additional fine service to and from Colorado is afforded by the Exposition Flyer, Chicago-San Francisco train operating through the heart of the Colorado Rockies.

Wesbound the Exposition Flyer provides mid-day departure from Chicago and morning arrival in Denver; eastbound, mid-day departure from Denver and morning arrival in Chicago. It also affords through service to Glenwood Springs, Grand Junction and western Colorado.

The Exposition Flyer is drawn by mighty diesel-electric locomotives and

One of the Pullman sections... colorfully upholstered, tastefully decorated, roomy.



Lovely dressing rooms for ladies are distinctive features of the coach accommodations on these amazingly popular Zephyrs.



Zephyr chair car comforts and accommodations include reclining and rotating seats and full carpeting of floors.

Interior of the lovely, full-length observation lounge car on the Denver Zephyrs.





Restful ease by day and peaceful sleep at night are yours when you travel via Burlington on your Colorado vacation.

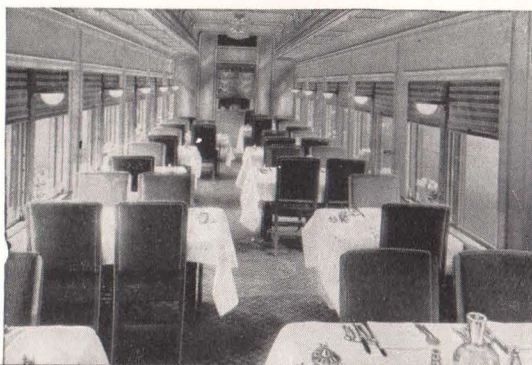
carries standard and tourist Pullmans, observation-lounge car; de luxe chair cars, and dining car. It affords an ideal service for visiting Colorado en route to or from California.

Another convenient Burlington train, carrying through Pullman and chair car, leaves Denver after dinner arriving Chicago next evening.

Burlington Service from St. Louis and Kansas City

The diesel-powered General Pershing Zephyr, in connection with the Exposition Flyer at Lincoln, affords convenient, Pullman and chair car service between St. Louis—Kansas City and Colorado. Dining car and

Smart dining car on the "Exposition Flyer" to the Colorado playgrounds.



observation-lounge service provided enroute.

Colorado Connections

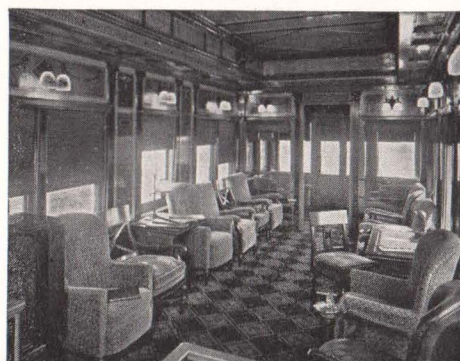
Burlington trains connect at Denver with trains for various parts of Colorado and the Rocky Mountain region.

To the north the Burlington Lines serve Boulder, Longmont, Loveland, Ft. Collins (gateways to Rocky Mountain Park) as well as Wyoming and Yellowstone National Park. This road also has double daily service between Denver, Colorado Springs and Pueblo. Western Colorado and Utah points are reached by the D. & R. G. W. Ry. via either the Moffat Tunnel or Royal Gorge routes, while Granby, Steamboat Springs, and Northwestern Colorado points are served by the D. & S. L. Ry. Burlington Lines' diesel-powered TEXAS ZEPHYRS connect Denver with Texas and the Gulf Coast.

Visit Three National Parks on One Burlington Ticket

It is a simple matter to plan a vacation trip embracing Rocky Mountain, Yellowstone and Glacier national parks—all on one Burlington ticket. For example, a round trip Burlington ticket from any Eastern point to Glacier permits you to travel one way via Colorado, with free sidetrip from Denver to Colorado Springs. En route between Colorado and Glacier, for a few dollars additional rail fare, you may visit Yellowstone, using the Cody, Red Lodge or Gardiner gateways. It is also possible to route your trip so as to make a stopover at Newcastle, Wyoming, for a tour of the romantic Black Hills of South Dakota. *It pays to Go Burlington.*

Solarium-observation lounge car on the "Exposition Flyer"



Burlington Travel Bureaus

ABILENE, TEX.
ALBANY, GA.
AMARILLO, TEX.
ATCHISON, KAN.
ATLANTA 3, GA.
BIRMINGHAM 3, ALA.
BOSTON 16, MASS.
BURLINGTON, IOWA
CHEYENNE, WYO.
CHICAGO 3, ILL.
CINCINNATI 2, OHIO
CLEVELAND 13, OHIO
CLINTON, IOWA
COLORADO SPRINGS
COUNCIL BLUFFS, IOWA
DALLAS 1, TEXAS

DAVENPORT, IOWA
DENVER 2, COLO.
DES MOINES 9, IOWA
DETROIT 26, MICH.
FORT WORTH 2, TEX.
GALESBURG, ILL.
HASTINGS, NEB.
HOUSTON 2, TEX.

INDIANAPOLIS 4, IND.
JACKSONVILLE 1, FLA.
KANSAS CITY 6, MO.
LEAVENWORTH, KAN.
LINCOLN 8, NEB.
LOS ANGELES 14, CAL.
LUBBOCK 2, TEX.
MEMPHIS 3, TENN.
MILWAUKEE 3, WIS.
MINNEAPOLIS 2, MINN.
MOBILE 13, ALA.
NEW ORLEANS 12, LA.
NEW YORK 18, N. Y.
OAKLAND 12, CALIF.
OKLAHOMA CITY 2, OKLA.
OMAHA 2, NEB.

PADUCAH, KY.
PEORIA 2, ILL.
PHILADELPHIA 9, PA.
PITTSBURGH 19, PA.
PORTLAND 4, ORE.
PUEBLO, COLO.
QUINCY, ILL.
ROCK ISLAND, ILL.
SALT LAKE CITY 1, UTAH
SAN ANTONIO 5, TEX.
SAN FRANCISCO 5, CAL.
SEATTLE 4, WASH.
SIOUX CITY 9, IOWA
SPOKANE 8, WASH.
ST. JOSEPH 2, MO.
ST. LOUIS 2, MO.
ST. PAUL 1, MINN.

TULSA 3, OKLA.
WASHINGTON 5, D. C.
WICHITA FALLS, TEX.
WINNIPEG, MAN.
WINSTON-SALEM 1, N. C.

J. J. ALMS
General Passenger Agent
1004 Farnam St., OMAHA 8, NEB.

719 Mims Bldg.
707 N. Slappey Dr.
239-241 Amarillo Bldg.
Second and Main Sts.
632-633 Healey Bldg.
510 Brown-Marx Bldg.
80 Boylston St.
Burlington Station
Burlington—C. & S. Station
Adams at Clark St.
505 Dixie Terminal Bldg.
1033 Terminal Tower
404 Wilson Bldg.
607 Exch. Nat'l Bank
Burlington Station
701-2 Kirby Bldg.
732 Irwin-Keasler Bldg.
Union Station
17th & Champa
411 Savings & Loan Bldg.
709-710 Lafayette Bldg.
702 Ft. Worth Club Bldg.
Burlington Station
Burlington Station
324 Union Station
925 Texas Ave.
910 Merchants Bk. Bldg.
304 Barnett Nat'l Bank
1031 Grand Avenue
Fifth & Choctaw Sts.
11th and P Sts.
510 W. 6th St.
1805 Avenue G
1834 Exchange Bldg.
231 W. Wisconsin Ave.
90 South 7th St.
203 First Nat'l Annex
622-3 Canal Bldg.
500 Fifth Ave.
512 Central Bank Bldg.
2902 Apco Tower
Farnam at 19th St.
1614 Farnam St.
606 Citizens Bank
301 S. Jefferson Ave.
123 S. Broad St.
2620 Koppers Bldg.
911 Equitable Bldg.
622 N. Main St.
400 Maine St.
Burlington Station
218 Kearns Bldg.
318 Gunter Bldg.
999 Monadnock Bldg.
1401 Dexter Horton Bldg.
400 Commerce Bldg.
1031 Old Nat'l Bank
511 Francis St.
322 N. Broadway
226-228 Railroad Bldg.
5th & Robert St.
203 Mid-Continent Pet. Corp. Bldg.
425 Shoreham Bldg.
506 7th St.
701 Childs Bldg.
529 Reynolds Bldg.

B. L. GARTSIDE
General Passenger Agent
547 W. Jackson Blvd., Chicago 6, Ill.

A. E. DRAKE, Gen'l. Agt.
C. C. RIFFE, T. P. A.
W. M. GRAY, Gen'l. Agt.
G. A. TAUCHMAN, Com'l. Agt.
H. B. HOWE, Com'l. Agent
J. M. McDERMOTT, Gen'l. Agt.
C. L. GAFFNEY, Gen'l. Agt.
J. C. HARKNESS, Div. Pass. Agt.
J. P. McDERMOTT, Gen'l. Agt.
W. M. MOLONEY, Gen'l. Agt.
E. G. WATERMAN, Gen'l. Agt.
ROBT. BERMAN, Gen'l. Agt.
W. A. CARLSON, Com'l. Agt.
PAUL L. GETCHELL, Gen'l. Agt.
A. N. KOLB, Com'l. Agt.
T. V. MURRAY, JR., Gen'l. Agt.
E. C. KUYKENDALL, Gen'l. Agt.
H. A. LEOPOLD, Com'l. Agt.
F. W. JOHNSON, G.P.A.
H. E. SMITH, C.P.A.
P. L. SMITHBURG, Gen'l. Agt.
J. F. LEHANE, JR., Gen'l. Agt.
W. E. STOFFER, D. P. A.
D. KASTRUP, D. P. A.
J. E. MERONEY, Gen'l. Agt.
C. L. MERRIOTT, Gen'l. Agt.
W. P. O'Rourke, Gen'l. Agt.
W. F. GRADY, Gen'l. Agt.
J. E. LYNN, Gen'l. Agt.
S. E. NIRDLINGER, Com'l. Agt.
W. T. ALBRECHT, Gen'l. Agt.
L. E. GABRIELSON, Gen'l. Agt.
G. C. VICTORY, Gen'l. Agt.
C. O. WARRELL, Gen'l. Agt.
W. G. SHISLER, Gen'l. Agt.
W. R. BURGESS, Gen'l. Agt.
S. M. GRAHAM, Com'l. Agt.
F. J. PETAGNA, Gen'l. Agt.
M. J. FOX, Gen'l. Agt.
V. A. KULBERG, Com'l. Agt.
B. C. MILLIKEN, Com'l. Agt.
J. W. SHARPE, Gen'l. Agt.
W. L. MCKAIN, City Tkt. Agt.
V. B. BUDDIE, Com't. Agt.
H. F. WILLIS, Gen'l. Agt.
E. O. CHOICE, Gen'l. Agt.
L. M. JONES, Gen'l. Agt.
O. G. HAGEMANN, Gen'l. Agt.
G. G. CLUTTER, Gen'l. Agt.
B. R. NEWLON, D. P. A.
A. R. BROWN, D. F. A.
J. H. GREGORY, Gen'l. Agt.
S. B. GIMBLE, Gen'l. Agt.
O. M. DETOY, Gen'l. Agt.
C. W. HOEFENER, Gen'l. Agt.
E. A. MARTIN, Gen'l. Agt.
J. C. BOYER, Gen'l. Agt.
S. T. ABBOTT, Div. Pass'r Agt.
R. A. CAMPBELL, Gen'l. Agt.
BEN W. WILSON, A. G. P. A.
C. E. BIRDSSELL, Gen'l. Agt.
J. D. REZNER, JR., Gen'l. Agt.
E. L. SIMMONS, Gen'l. Agt.
O. M. SMITH, Gen'l. Agt.
FRANK WALL, Gen'l. Agt.
R. F. MORSE, T. P. A.

A. COTSWORTH, JR.
Passenger Traffic Manager
547 W. Jackson Blvd., Chicago 6, Ill.

