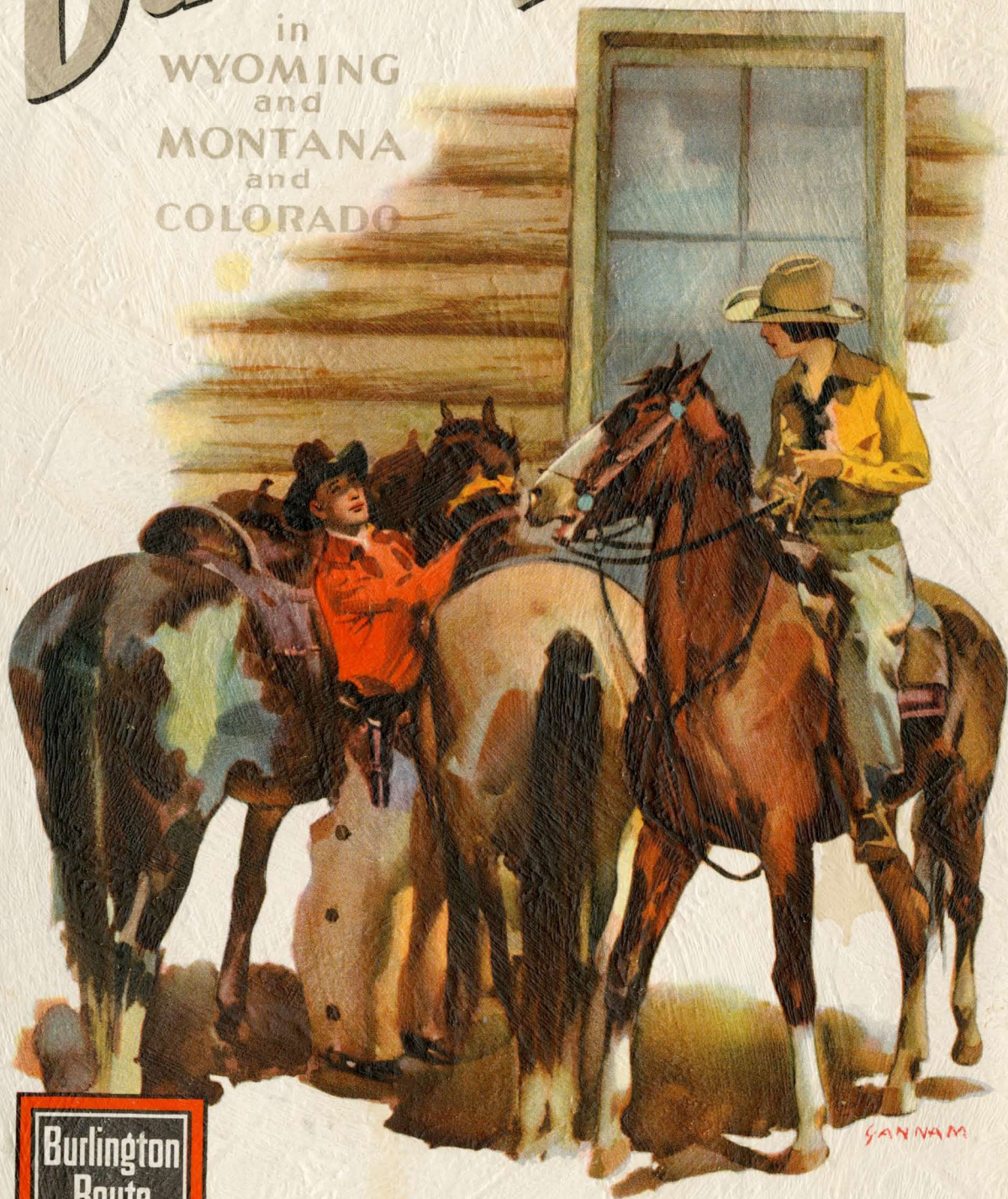
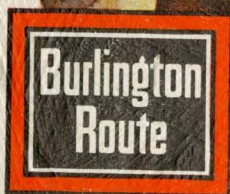


# Dude Ranches

in  
WYOMING  
and  
MONTANA  
and  
COLORADO



SANNAM





**THE DUDE RANCHES**



4

INVITE YOU TO—



*a Typically*  
**AMERICAN  
VACATION**  
**in the Glorious West**

**O**UT where the Western plateaus billow upward to meet the snow-crested ramparts of the Rockies is the Dude Ranch Country, as majestic, as rugged and almost as primitive as when white men first beheld it. Here is a different world, a world of horseflesh and leather, of boots and 10-gallon hats, of 50-mile vistas and two-mile-high mountains. Here is Nature unspoiled and unspoilable.

Have you ever felt a good horse between your knees, had the mountain air caress your face as you galloped toward purple horizons, scented the wood smoke of campfires at dusk, slept beneath stars that seem close enough to touch.

The ranchers of Wyoming, Montana, and Colorado—men and sons of men who won the West—open their domains to you for such a truly American vacation.







The Rancher and his Wranglers Welcome You to their Western Domain

A DUDE, in the language of the cattle country, is any person who hails from east of the Black Hills. The name is a picturesque and friendly appellation applied to all visitors. Women guests sometimes are called "dudines."

## An Introduction to Life on a Western Dude Ranch



DUDE RANCHES served by the Burlington Route dot that ruggedly scenic section of the West straddling the Continental Divide from the Canadian border to the Colorado-New Mexico boundary.

Some are situated on the broad plains where limitless prairies challenge the horseman to ride wild and free as the winds. Others nestle in canyons' mouths where inviting trails lead up, up, up in one direction, stretch away over rolling foothills in the other. A number are hidden away in remote green valleys where towering, snow-clad peaks shut out the worries of work-a-day urban worlds.

There are ranches beside snowfed trout streams, in the fastnesses of the big game country, on the borders of Glacier, Yellowstone, Rocky Mountain and Mesa Verde National Parks, at elevations ranging from 3,300 to more than 9,000 feet.

The selection of a dude ranch depends largely upon one's requirements for an enjoyable vacation.

There are big outfits and little ones; establishments with pretentious facilities for entertaining guests; ranches where dudes dine at the family board and find their entertainment in everyday chores of the range.

At all, however, the dude is a guest. An individual saddle horse and equipment are ordinarily at his disposal throughout his visit. Ranch hands always are ready to assist in roping and saddling, and accompany the inexperienced riders.

The cost of a dude ranch vacation is largely governed by the accommodations and services. Some ranches are comparable to fine resort hotels, yet retain a true ranch atmosphere. Others offer chiefly clean, comfortable sleeping quarters, wholesome meals, and the magnificent out-of-doors in which to enjoy oneself.

The family nature of dude ranch life has caused many owners to select their guests carefully. Reservations usually are accepted only after correspondence during which references are exchanged.





## A Typical Day in a Dude Ranch Vacation

THE DAY on a Western ranch begins before sunup. Bright and early the wranglers saddle and gallop off to nearby pastures to bring in the saddle horses. Ambitious guests, willing to quit warm beds, are welcome to go along.

Promptly following breakfast, ranch interest focuses on the corral. Dudes and dudines perch atop rail fences while the corral boss and the cowhands "bring around" the day's quota of horses.

Born to the saddle, Western ranchers take professional pride in the quality of their horses, and their ability to select mounts for every kind of rider. There are safe, gentle horses for children and those who never before straddled a saddle. There are sure-footed animals for steep mountain trails. And there are fleet, spirited mounts for those who love to gallop over the prairies.

All except experienced riders are accompanied by cowboys wise in the ways of horses and the open spaces. Novices are encouraged to accustom themselves to the saddle gradually.

Every ranch boasts of the variety and beauty of its horseback trails. Some are short, easy jogs for beginners, others are half-day or all-day jaunts to some beautiful canyon, dashing waterfall, or mountain top commanding a breath-taking view.

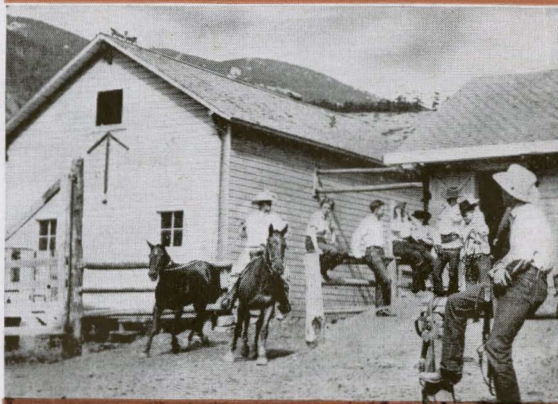
Often there is an all-day trip into the mountains or out onto the range to watch the cowhands at work. On such occasions, the horseback party, ravenously hungry from a morning in the saddle, arrives at noon at some picturesque spot to discover that a camp cook, who has preceded them with pack animals, has prepared a sumptuous lunch.

Guests are welcome to take all or none of these saddle trips. There are no "musts," a dude ranch being one place where everyone does what he pleases, finding congenial companionship.

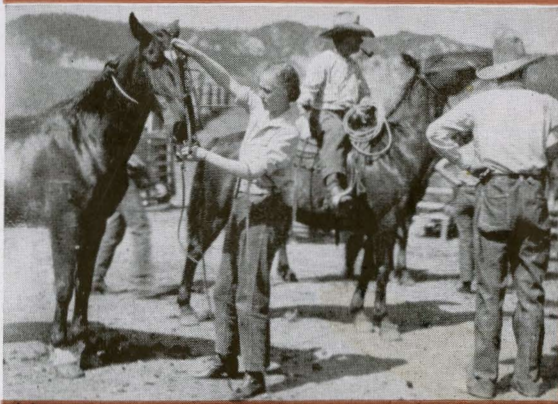
Afternoons ordinarily are divided between riding, a dip in the cool, clear swimming hole, reading, napping, or the simple luxury of "just settin'." Evenings are occupied with moonlight rides, dancing and games in the recreation hall, or roasting marshmallows and singing around a blazing campfire in the cool stillness of the starry mountain night.



*Wranglers Bring in the Horses*



*The Corral Boss Brings Around Your Mount*



*This Dudine Bridles Her Own Horse*





## Some Merely Hike or Loaf

SURPRISINGLY, life on a dude ranch holds a fascination for many who never or seldom ride. Some enjoy lounging beneath great trees or on a shady cabin porch feasting their eyes on the majestic scenery. Others prefer hiking over seldom used trails or through the "rough" to mountain tops or hidden dells. All delight in trips in the ranch car to nearby historic and scenic spots.

Always, there is quiet for reading or dozing, or congenial company for chatting, or enough to make a table of bridge.

On many ranches instructive hours can be spent watching the blacksmith and saddler plying their artful trades, or observing the preparations for the departure of a pack trip party.



## Fine Food and Sound Sleep

EATING and sleeping are divine pleasures in the West. Overwhelming as the demand for both becomes, the supply is adequate.

Dining facilities on dude ranches range from a simple enlargement of the ranchhouse table to handsome dining halls seating scores of guests.

Most ranches have their own fine dairy herds and poultry flocks, and cultivate gardens of succulent vegetables. Other supplies are trucked in fresh daily from nearby towns.

Sleeping accommodations vary according to individual ranches. Most quarter their guests in rustic log cabins set sufficiently apart to insure privacy. Others provide comfortable rooms in the main ranch house, and a few offer accommodations in tents with boarded floors and sides.

Furnishings are rustic yet comfortable, and many cabins have running water and baths. Larger ranches usually have a store and recreation rooms in the main ranchhouse or in separate buildings.



*Cowboys Are Natural-born Yarn Spinners*



*Time Out on an All-Day Ride*



*Luxurious Loafing After a Brisk Ride*





*Dining Facilities Vary According to Individual Ranches*



*Cabins Set Among Green Pines Look Out Upon Majestic Mountain Scenery*



*Cabins Are Clean, Comfortable*



*Here You Can Read and Chat*

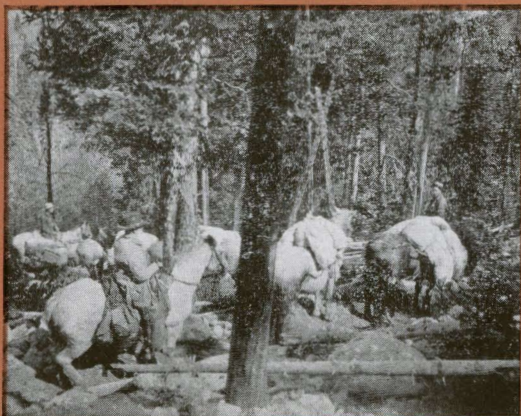




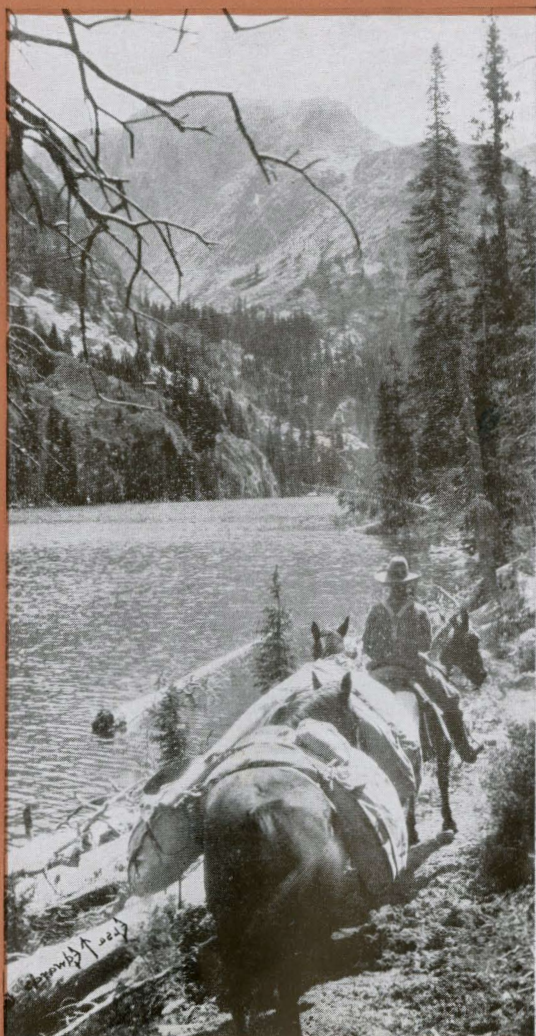
*Astride a Good Horse You Head into the Wide Open Spaces of the Glorious West*



*Fording a Snow-Fed Mountain Stream*

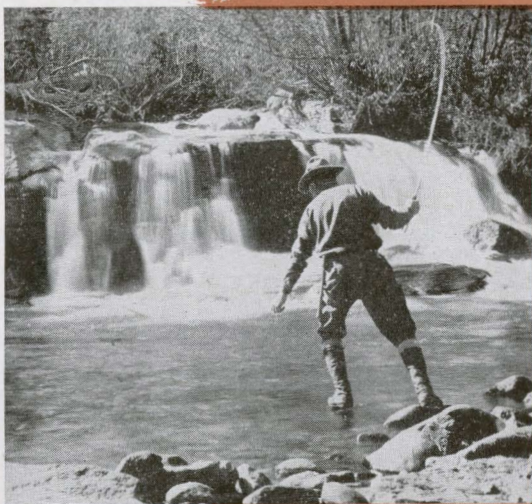


*Food and Shelter Travel by Horseback*

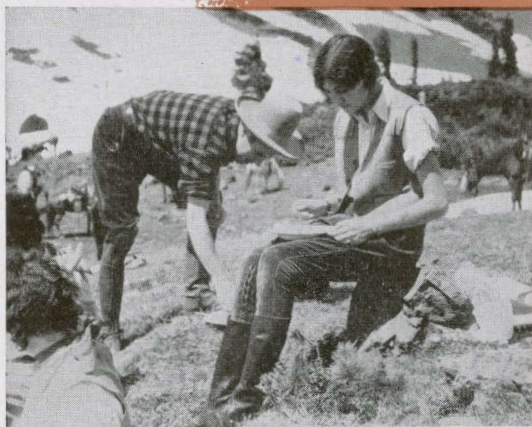


*Pack Trails Lead Where Roads Never Run*





*Speckled Beauties Await Your Hook*



*A Morning in the Saddle Whets the Appetite*

## Fishing and Pack Trips

THE ROCKY MOUNTAIN region is world-famous for its fine trout fishing, and a short ride or hike from almost any dude ranch takes one to some well-stocked stream or lake. Next to riding, fishing is the favorite dude ranch diversion.

Most ranches offer summer pack trips ranging from a few days to a week or more. Capable packers, guides and cooks accompany all such expeditions.

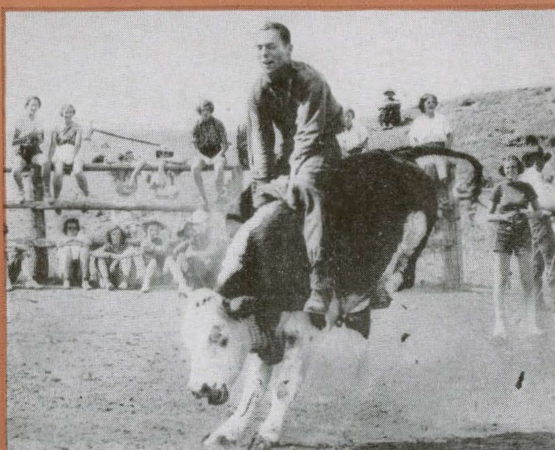
Practically all dude ranches specialize during the fall seasons in guiding big game hunters. The Dude Ranch Country is the natural habitat of elk, deer, moose, antelope, Big Horn sheep, mountain goat and bear. Write to ranchers for information on open seasons and pack trip, guide and license costs.



## Let Her Buck

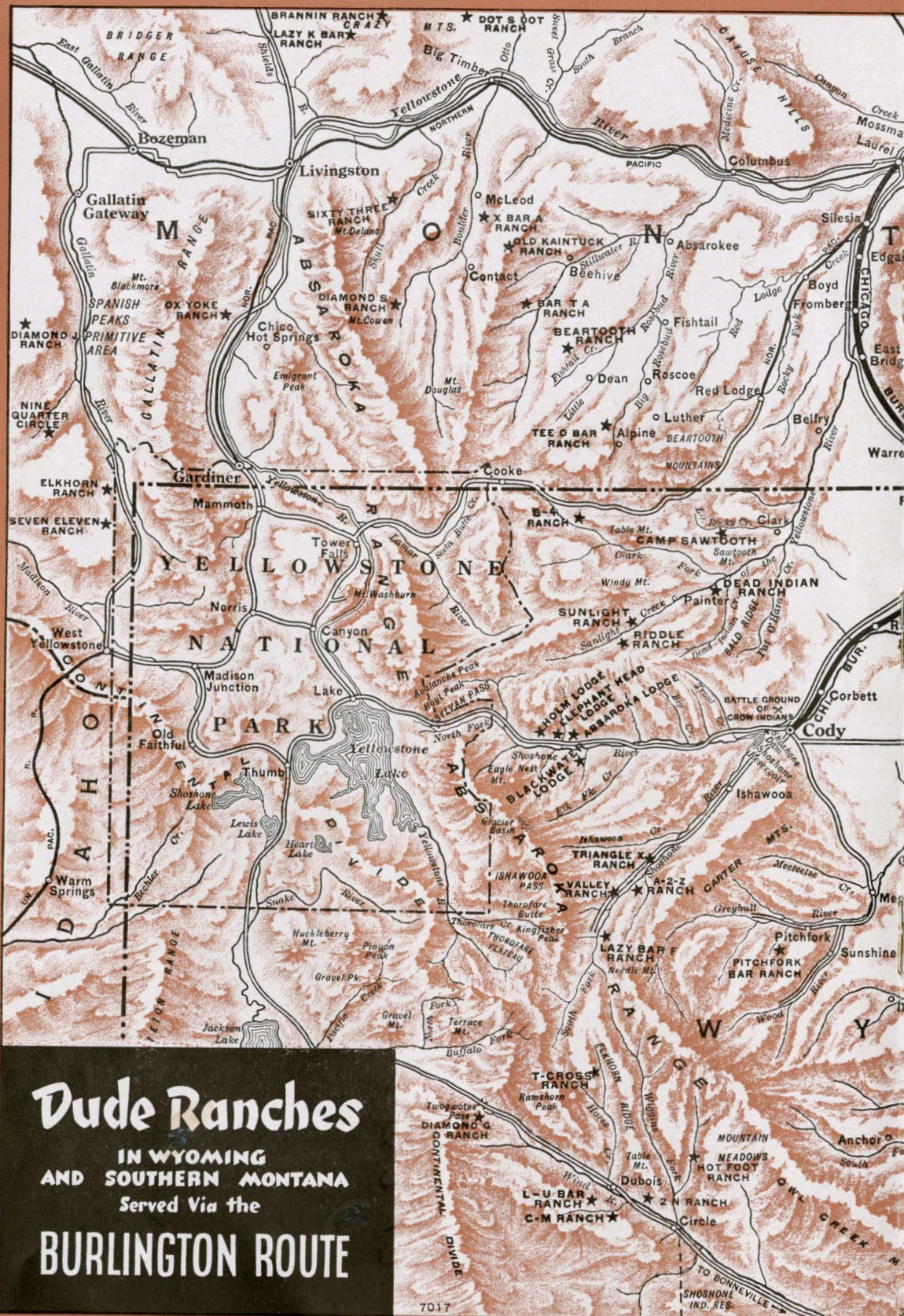
HOME-TALENT rodeos are a favorite form of ranch entertainment. Guests are invited to join in events such as calf-roping and calf-riding.

The more expert cowboys compete in the big rodeos held each summer throughout the cattle country. Frequently, guests ride into town with the cowboys and cheer their favorites against the entries from neighboring ranches.

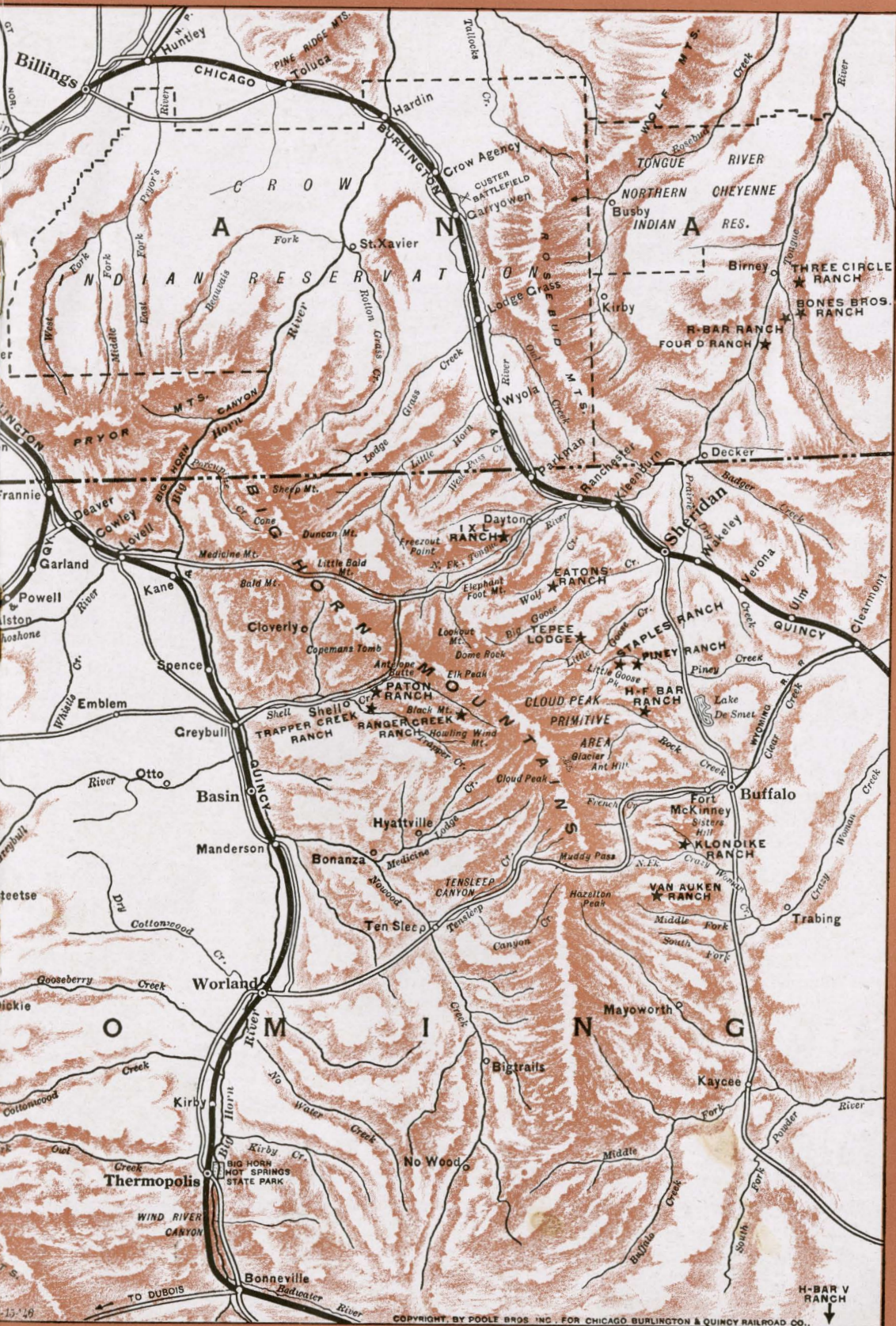


*Expert cowboys compete in the big rodeos held each summer in the cattle country*









LE  
 {  
 J  
 (P)  
 K  
 Y  
 X  
 (1)  
 Q  
 S  
 S  
 X  
 A2Z  
 <<<  
 (4)  
 V  
 X  
 H  
 T  
 H  
 ↑  
 K  
 J  
 V





## When It's Round-up Time

GUESTS on ranches in the late spring or early fall can witness and even participate in that spectacular cattle country institution, the round-up.

This frequently includes riding far up to mountain pastures, listening to old cowmen's yarns around the campfire, sleeping in a tent or under the stars, eating meals from the chuck wagon, witnessing the riding, roping and branding, even lending a hand.

## Parks Around the Corner

DUDE RANCHES are ideal bases from which to explore the West's great national parks. Trips can usually be made in buses of the Park transportation companies, or a ranch car with an experienced mountain driver. Some ranches specialize in summer pack trips into the parks, visiting remote beauties that the average park tourist never sees. It also is possible, at little or no additional railroad fare, to include a visit to one or more of the Western parks en route to or from a ranch.

## Wildlife and Redskins

FEW RESORTS in the world have such a variety of attractions as the Dude Ranch Country. Indian bucks, squaws and papooses are common sights throughout this country. Many ranches adjoin Indian reservations where the wild days before the coming of the White Man are often re-lived at tribal ceremonies.



*Dudes Sometimes Assist at the Round-up*



*Western Cowhands Are Unerring With a Rope*



*Great Herds of Cattle Inhabit the Dude Ranch Regions*

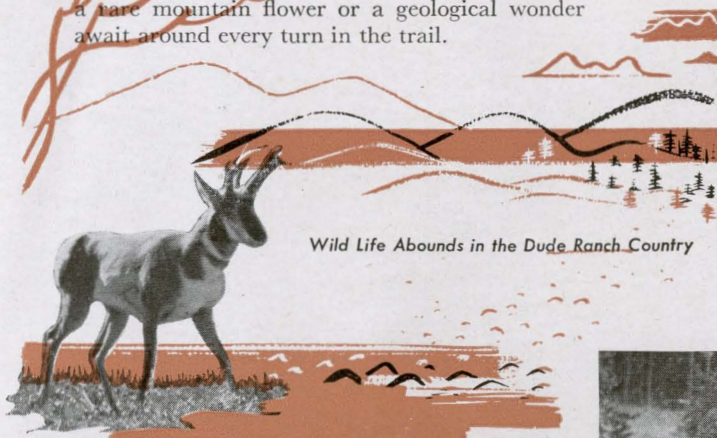


*Indians Are Frequent Ranch Visitors*



Surrounded by state and national parks, national forests, "wilderness" areas and game preserves, the ranches occupy a territory whose mountainous character has kept it unspoiled and will keep it so.

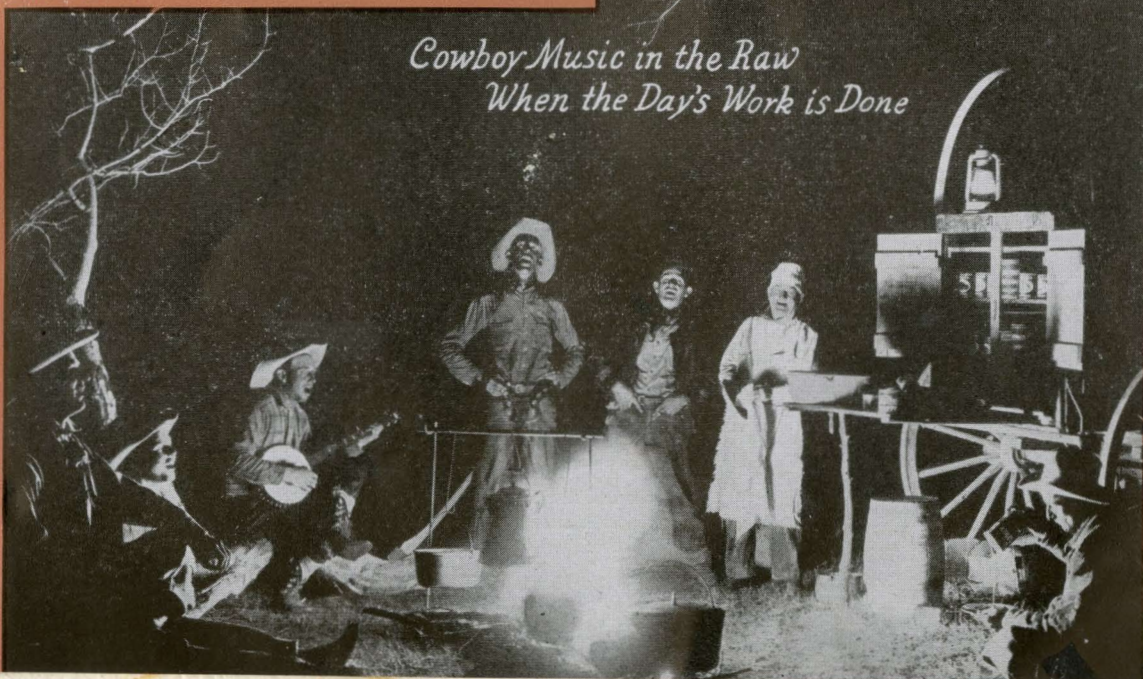
Here is a veritable paradise for the photographer, the artist, the nature student. A wide-eyed fawn, a rare mountain flower or a geological wonder await around every turn in the trail.



Wild Life Abounds in the Dude Ranch Country



*Cowboy Music in the Raw  
When the Day's Work is Done*





# Choosing the Best Dude Ranch for Your Vacation

BECAUSE an ideal Western vacation should be of two weeks or more duration, careful choice of a dude ranch is of utmost importance. No two dude ranches are exactly alike, and an appropriate selection can vastly increase one's enjoyment.

Prospective guests should correspond personally with the rancher for detailed information about type of accommodations, rates, entertainment features, etc., etc. Reservations are always made in advance and the rancher advised the date and hour of arrival so the ranch car can meet the train.

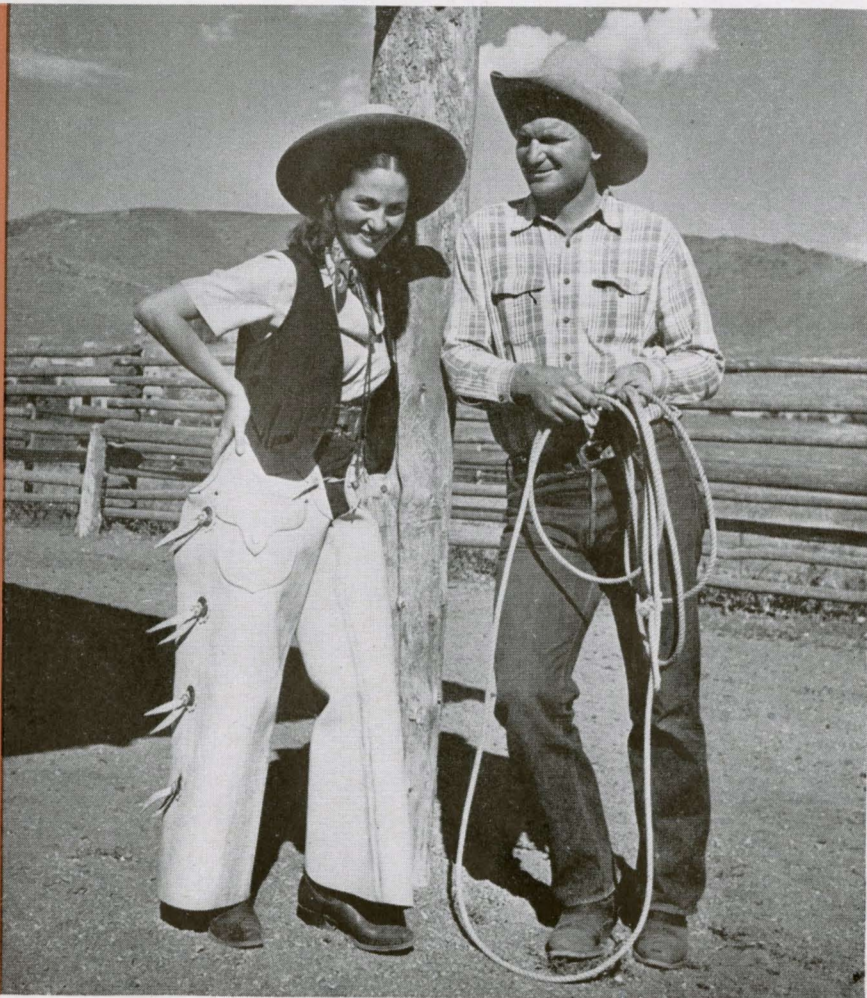
Rates include lodging, meals, entertainment, a private saddle horse and its care (unless otherwise specified), guides for ordinary trips—in fact, all necessary expenses.

## MANY RANCHES OPEN ALL YEAR

*Don't forget that many dude ranches are open the year 'round. May, September and October are ideal weather months. Then occur the great cattle round-ups . . . then fishing is best and it's open season for big game . . . and then most ranches offer sharply reduced rates. For winter sports enthusiasts there is no grander fun than skiing over mountains robed in snow.*

No elaborate wardrobe is necessary. Blue jeans, a gay shirt and ordinary cow-boy boots are probably the most popular riding apparel of both sexes. Sportswear is appropriate afternoon and evening, while cool nights recommend warm sweaters or jackets. Substantial, comfortable walking shoes and heavy hosiery also should be included. Stores in the towns of the Dude Ranch Country are admirably stocked to supply all items of Western costume.

A soft-eyed horse—your horse—is nicker for you in the corral. The great open spaces are beckoning . . . The mountain air and the solitudes are waiting to wash away your worries and cares. Go West for the most glorious and gratifying vacation of your life.





# Wyoming and Southern Montana Dude Ranches

RANCH, OPERATOR, AND POST OFFICE ADDRESS	Established	Elevation	Acreage	Cattle	Horses	Miles to rail point	Transp. Charge	Type of lodgings (See note)	Capacity	Rate per week
ABSAROKA, Victor Heyliger, Wapiti, Wyo.....	'29	6500	50	.....	30	Cody-40	0	Boys-RC	50	Write
*A 2 Z, Larry Larom, Valley, Wyo.....	'15	6500	10000	150	240	Cody-43	\$9	C*	25	\$63-75
*BAR T A, F. A. Ames, McLeod, Mont.....	'37	6000	320	10	16	Big Timber-26	\$10	C	12	\$42
*BEARTOOTH, E. J. Ikerman, Nye, Mont.....	'22	5058	840	60	50	Columbus-45	\$4.50	C	30	\$55-70
BLACKWATER, Earl Brahler, Cody, Wyo.....	'30	6200	.....	.....	.....	Cody-37	.....	C*	40	\$50
*BONES BROS., Alderson Bros., Birney, Mont.....	'22	3500	10000	300	200	Sheridan-67	\$10	C*	45	\$60
BRANNIN, Barney M. Brannin, Melville, Mont...	'02	6035	3030	150	60	Big Timber-40	\$5	CR*	40	\$50
*B 4, Fred Garlow, Cooke, Mont.....	'25	7000	160	35	20	Red Lodge-55	\$20	C*	15	\$65-75
*C M, C. C. Moore, Dubois, Wyo.....	'07	7000	1500	50	100	Bonneville-110	\$20	C*	60	Write
DEAD INDIAN, Paul E. Ritterbrown, Cody, Wyo.	'34	6200	200	.....	50	Cody-38	\$5	C	15	Write
*DEWEY RIDDLE, D. Riddle, Cody, Wyo.....	'20	6500	900	100	75	Cody-50	\$10	C*	20	\$80-90
*DIAMOND G, F. S. Scott, Dubois, Wyo.....	'30	9000	.....	50	175	Bonneville-140	\$20	R*C*	65	\$75
*DIAMOND J, Julia Bennett, Ennis, Mont.....	'30	5500	2160	.....	40	Bozeman-65	0	C*	35	\$75 up
DIAMOND S, C. L. Smith, Boulder, Mont.....	'30	5000	1500	150	35	Boulder-3	0	C*	125	\$35-70
*DOT S DOT, H. R. Hart, Big Timber, Mont.....	'84	5200	2500	200	55	Big Timber-27	0	R*C*	35	\$60-75
*DOUBLE L BAR, Ray Siggins, Cody, Wyo.....	'22	6560	5000	250	20	Cody-32	0	C*	10	Write
*EATON'S, Eaton Bros., Wolf, Wyo.....	'79	4500	7000	700	350	Sheridan-18	0	R*C*	125	Write
ELEPHANT HEAD, P. Outsen, Wapiti, Wyo.....	'26	6500	.....	.....	15	Cody-40	\$10	C*	30	\$50-70
*ELKHORN, E. Miller, Bozeman, Mont.....	'22	7000	3500	50	180	Bozeman-60	\$8	C*	45	\$70-80
*H BAR V, J. Williams, Douglas, Wyo.....	'37	7600	3840	275	61	Douglas-36	\$5	R*C*T*	24	\$50-56
*H. F BAR, Horton & Sons, Saddlestring, Wyo.....	'10	5200	20000	500	300	Sheridan-38	\$5	R*C*	100	\$65-85
*HOLM LODGE, J. W. Howell Co., Cody, Wyo.....	'14	7000	.....	.....	100	Cody-43	\$5	CT	70	Write
*HOT FOOT, G. Washburne, Duncan, Wyo.....	'28	7000	1000	.....	20	Bonneville-118	0	RC	10	\$70
I X L, Toni Capri, Dayton, Wyo.....	'37	4500	4000	350	75	Sheridan-26	0	RC*	50	\$50-75
J LAZY Y RANCH, Johnnie Bryan, Cameron, Mont.	'42	6000	1500	100	45	Cameron-70	0	.....	12	\$65
*KLONDIKE, Leo Tass, Buffalo, Wyo.....	'20	6000	1700	80	50	Sheridan-60	\$5	C	30	\$49
LAZY BAR F, M. Wilde, Valley, Wyo.....	'18	6500	160	.....	45	Cody-46	\$15	C	12	Write
*LAZY K BAR, P. Van Cleve, Jr., Big Timber, Mont.	'23	5600	26000	900	260	Big Timber-23	\$10	C*	70	\$60-85
*LAZY 6 V RANCH, Ned Frost, Cody, Wyo.....	'34	5975	2000	125	100	Cody-25	0	C*R*	..	Write
*NINE QUARTER CIRCLE, Howard Kelsey, Eldridge, Mont.....	'34	7000	1080	.....	65	Bozeman-65	\$5	C*	50	\$60-77
*OLD KAINTUCK, W. G. Aller, McLeod, Mont...	'17	5000	650	140	19	Big Timber-30	\$5	C*	24	\$35-40@
*OX YOKE, Jim Murphy, Emigrant, Mont.....	'29	5600	5000	300	100	Livingston-39	0	C*	40	\$70
*PATON, W. Paton, Shell, Wyo.....	'27	4700	900	.....	40	Greybull-20	\$10	C	15	Write
PINEY RANCH, C. B. Peters, Story, Wyo.....	'25	5200	500	25	30	Sheridan-17½	0	R*C*	35	\$50 up
*PITCHFORK BAR, Jack Chapman, Pitchfork, Wyo.	'02	7500	64000	2000	150	Cody-53	\$15	C*	20	\$70-80
*RANGER CREEK, Glen H. Foe, Greybull, Wyo...	'36	8500	.....	.....	30	Greybull-35	\$5	RC	25	\$50-62.50
R BAR, G. C. Woodard, Birney, Mont.....	'18	3350	3000	275	35	Sheridan-65	\$10	RC	10	\$35
*SAWTOOTH, F. I. Johnson, Red Lodge, Mont...	'22	8500	.....	.....	25	Red Lodge-42	\$3.65	C	20	\$60
*SIXTY THREE, P. Christensen, Livingston Mont...	'29	5600	3000	200	80	Livingston-12	0	C*	30	\$55-65
STAPLES, H. G. Staples, Story, Wyo.....	'17	5300	160	20	35	Sheridan-20	\$5	RC	30	\$45
*SUNLIGHT, Don Snyder, Cody, Wyo.....	'22	7000	1500	150	100	Cody-45	\$10	C*	35	\$77-91
*T CROSS, R. S. Cox, Dubois, Wyo.....	'30	7900	400	.....	55	Bonneville-125	\$20	C*	21	\$70
*TEE O BAR, Dave Branger, Roscoe, Mont.....	'31	5500	5000	500	100	Red Lodge-24	0	C	30	\$40-50
*TEPEE, R. H. Robertson, Big Horn, Wyo.....	'29	7200	2000	1000	150	Sheridan-22	0	C*	55	Write
*TRAPPER CREEK, C. D. Goodwin, Shell, Wyo...	'37	4500	320	30	40	Greybull-20	0	R*C*	20	Write
*TRIANGLE X, Don Siggins, Cody, Wyo.....	'14	6500	1000	50	50	Cody-38	0	C*	10	Write
*TWO N, L. O. McMichael, Dubois, Wyo.....	'22	6900	160	.....	30	Bonneville-120	.....	C	20	\$60
*VALLEY, Larry Larom, Valley, Wyo.....	'15	6500	10000	150	240	Cody-45	\$9	C*	90	\$66-85
*VAN AUKEN, Mrs. W. G. Van Aukun, Buffalo, Wyo.	'34	5000	3000	100	25	Sheridan-60	0	C	16	\$65
*X BAR A, Jack Clark, Big Timber, Mont.....	'20	4900	2200	150	30	Big Timber-22	\$7.50	RCT	18	\$50

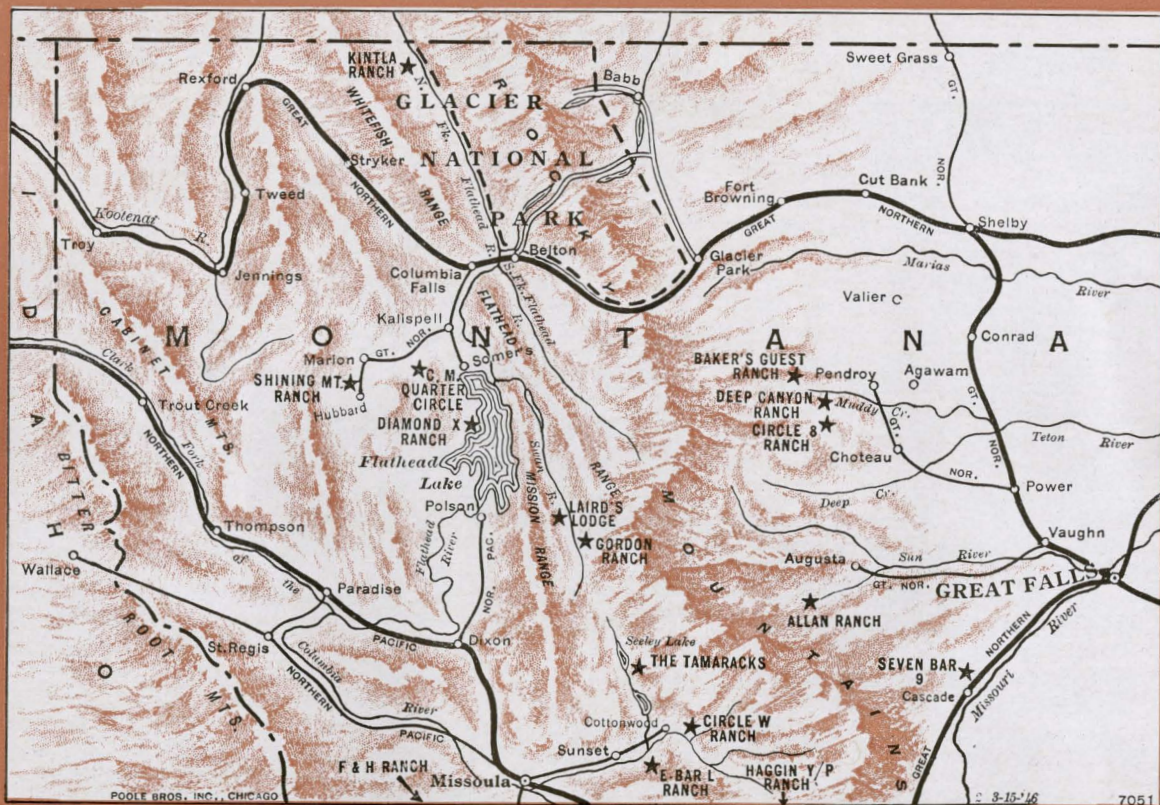
+Member Dude Ranchers' Assn.

@ Saddle horse not included in rate.

NOTE: C—Cabin; R—Rooms in ranchhouse; T—Tents; \*—available with private bath.

Data on Ranches as shown on this and the following pages has been compiled and checked as carefully as available sources of information permit. Such information, however, is necessarily subject to change without notice and the Burlington Lines cannot be responsible for its current accuracy.





## Northwestern Montana Dude Ranches

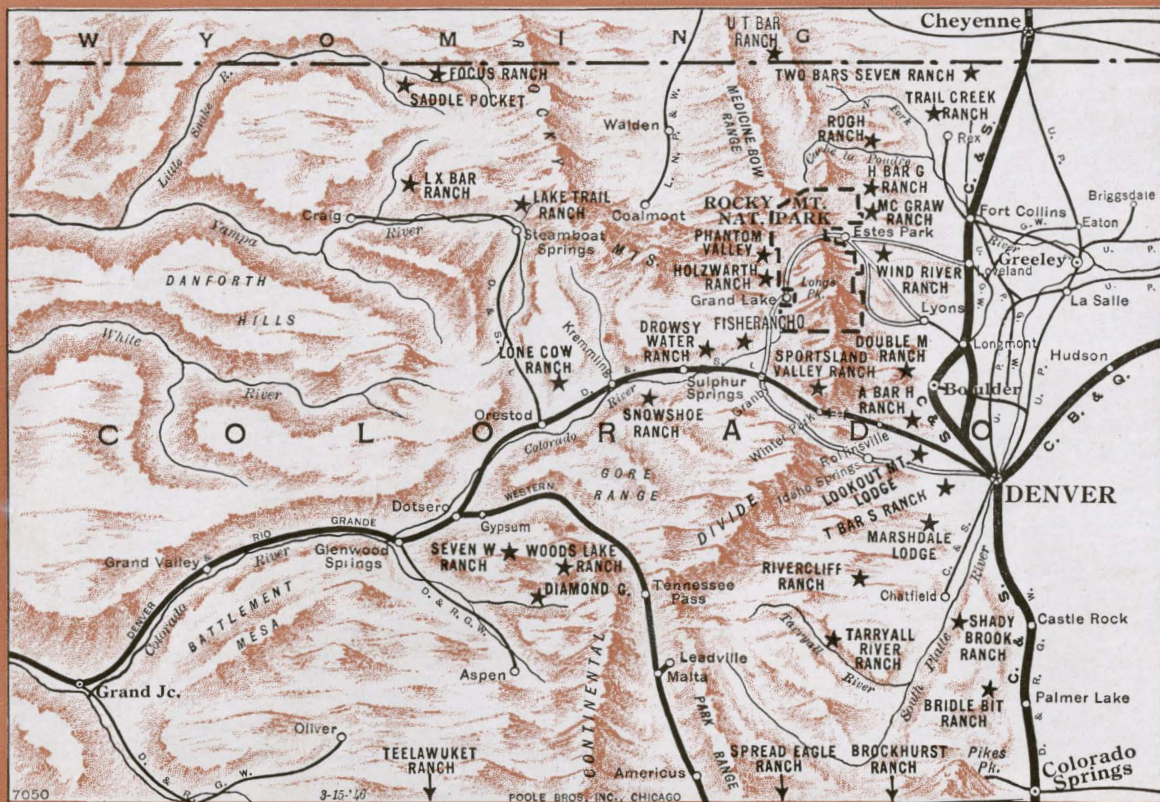
RANCH, OPERATOR, AND POST OFFICE ADDRESS	Established	Elevation	Acreage	Cattle	Horses	Miles to rail point	Transp. Charge	Type of lodgings (See note)	Capacity	Rate per week
*ALLAN, Mrs. R. Allan, Augusta.....	'20	5000	1500	.....	75	Great Falls-80	\$10	C	24	\$65-75
BAKER, Jack Baker, Choteau.....	'30	5300	.....	.....	35	Choteau	0	RC	16	\$55
*CIRCLE 8, K. H. Gleason, Choteau.....	'30	5100	1500	.....	60	Great Falls...	0	C	18	\$60
*CIRCLE W, Frank Ley, Ovando.....	'28	4000	600	.....	50	Missoula-52	\$10	R*C*	25	\$70-75
*C M QUARTER CIRCLE, W. C. March, Kalispell..	'10	3000	980	.....	80	Kalispell-14	0	C	35	\$70
*DEEP CANYON, J. W. White, Choteau.....	'30	4800	2200	.....	30	Choteau	0	C	10	\$55
DIAMOND X, G. Clatterbuck, Rollins.....	'37	3000	1000	75	30	Kalispell-27	0	C*	16	\$75
*E BAR L, Potter, Erickson, & Stone, Greenough..	'13	3900	15000	200	140	Missoula-40	\$10	C*	40	\$75
F. & H., Mrs. Wm. Ford, Darby.....	'20	5000	2500	600	50	Missoula-60	0	R*	15	\$90
*GORDON, H. H. Koessler, Seeley Lake.....	'24	4000	1250	100	50	Missoula-80	\$10	RC*	20	Write
*HAGGIN Y/P, Dr. W. L. Beal, Anaconda.....	'35	6300	400	.....	70	Drummond-50	\$10	C	30	\$65-75
KINTLA, Monro and Pinkerton, Trail Creek.....	'25	3835	374	.....	20	Belton-51	\$10	C	35	Write
*LAIRD'S, R. K. Hickey, Seeley Lake.....	'27	4350	900	.....	40	Missoula-85	\$5	RC	40	\$75
*LAZY F RANCH, Tom Whited, Ellensburg, Wash..	'37	2700	2900	150	75	Ellensburg-14	\$1.50	C*	60	\$65-75
*MAD RIVER-STEPPING C, Alfred H. Constans, Entiat, Wash.....	'33	5500	625	5	40	Entiat-15	0	RC	30	\$55-75
*METHOW VALLEY, Paul Spaeth, Winthrop, Wash.	'40	2000	1700	100	45	Pateros-43	\$10	RC*	30	\$65-75
SEVEN BAR 9, A. H. Kelley, Cascade.....	'34	3380	2000	100	30	Gary-0	0	C*	20	\$60-70
*SHINING MOUNT'N, Florence R. Cassill, Marion..	'25	3500	7000	300	300	Kalispell-26	\$5	Girls-C	45	\$55
*TAMARACKS, Mrs. H. Turner, Seeley Lake.....	'31	4000	200	.....	40	Missoula-58	\$5	C*	42	\$75

\*Member Dude Ranchers' Assn.

@Saddle horse not included in rate.

NOTE: C—Cabins; R—Rooms in ranchhouse; T—Tent; \*—available with private bath.





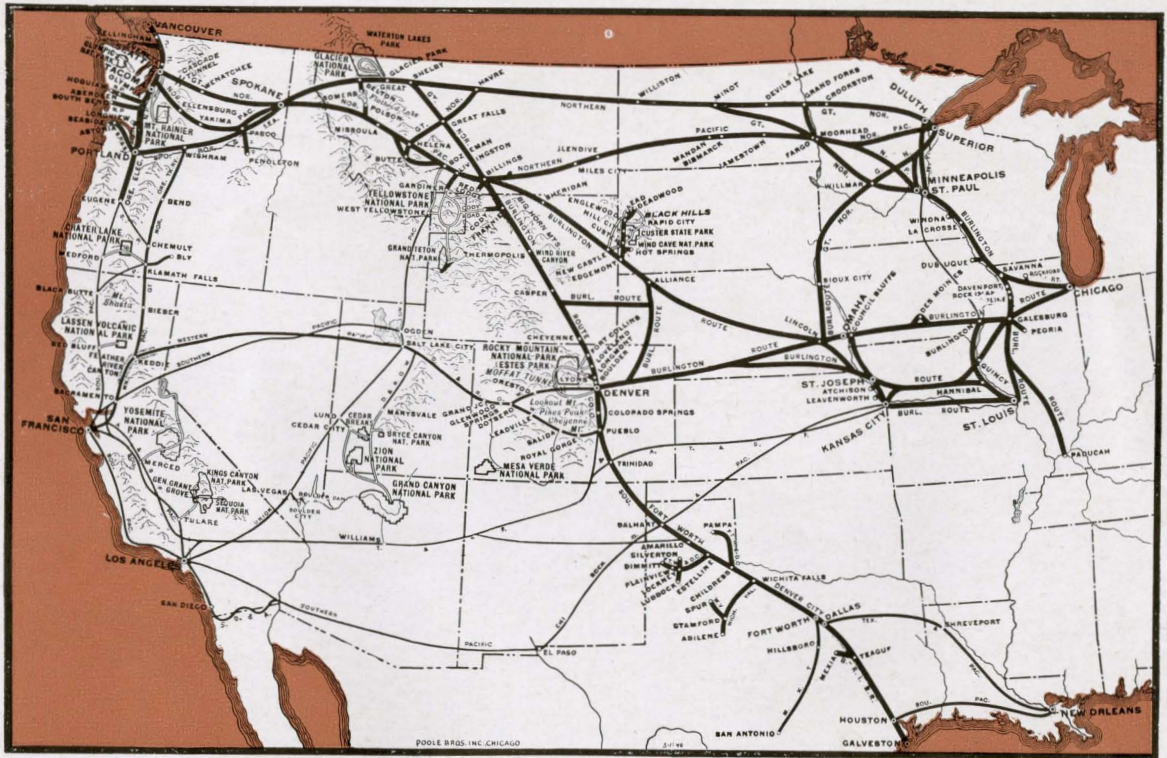
## Colorado Dude and Guest Ranches

RANCH, OPERATOR, AND  
POST OFFICE ADDRESS

RANCH, OPERATOR, AND POST OFFICE ADDRESS	Established	Elevation	Acreage	Cattle	Horses	Miles to rail point	Transp. Charge	Type of lodgings (See note)	Capacity	Rate per week
• A BAR H, P. W. House, Nederland.....	'40	8300	.....	.....	10	Rollinsville-7	0	RC	40	\$50 @
• BLACK MOUNTAIN, Dick Floyd, Red Feather Lakes.....	'46	8600	5000	500	25	Ft. Collins-50	0	R*	20	\$75
• BRIDLE BIT, John Baker, Colorado Springs.....	'35	7000	1400	150	50	Larkspur-4	0	RC*	25	\$65 up
• BROCKHURST, H. W. Brockhurst, Green Mt. Falls.....	'87	7800	700	100	35	Colo. Sprgs.-15	0	RC	30	\$65
• BUCKHORN LODGE, Hugh Neece, Parshall.....	.....	7600	.....	.....	.....	Parshall	.....	RC	60	\$70 up
• CRYSTAL RIVER LODGE, Redstone.....	'43	7200	360	20	30	GlenwoodSp.-28	0	R*	45	\$70 up
• DIAMOND G, F. T. McLaughlin, Basalt.....	'36	8000	800	40	20	GlenwoodSp.-43	0	RC*	35	\$60 @
• DOUBLE M, Walter Phelps, Gold Hill.....	'27	8300	132	.....	30	Boulder-12	0	R*C	45	\$45 @
• DROWSY WATER, D. Glessner, Hot Sulphur Spgs.....	'33	8300	16210	300	102	Drowsy Water-2	0	RC*	45	\$75-85
• FISHERANCHO, Redwood Fisher, Grand Lake.....	'29	8300	1200	300	50	Granby-12	0	RC	20	\$65 up
• FOCUS, J. B. Temple, Columbine.....	'11	6851	1700	400	40	Steambt. Sp.-52	0	R*C*	20	\$50-70
• H BAR G, H. Gates, Estes Park.....	'35	8100	201	.....	40	Denver-Estes#	\$9.20	R*C*	50	\$70-80 @
• HOLZWARTH, J. & J. Holzwarth, Grand Lake.....	'29	8903	350	.....	40	Granby-24	\$3	R*C*	50	\$40up @
• LAKE TRAIL, H. L. Greear, Steamboat Springs.....	'38	6700	40	.....	12	Steambt. Sp.-2	0	CR	30	\$60 @
• LONE COW, Milton W. Baumgarten, Kremmling.....	'39	8000	1000	.....	.....	Kremmling-13	0	RC	15	\$60 up
• MARSHDALE, E. R. Poindexter, Evergreen.....	'26	7500	160	.....	25	Denver-26	\$1.50	R*C*	75	\$60-70 @
• MCGRAW, Irene McGraw, Estes Park.....	'08	7500	1240	.....	25	Denver-Estes#	\$20	R*C*	40	\$55-70 @
• PHANTOM VALLEY, Irwin S. Beattie, Grand Lake.....	'27	9000	160	.....	30	Granby-32	\$3.00	C*	60	\$49-55 @
• RIVERCLIFF, Pete Smythe, Bailey.....	'75	7800	300	20	35	Denver-52	0	R*C*	20	Write
• RUGH, A. B. Christiansen, Bellevue.....	'16	7500	840	100	25	Ft. Collins-43	.....	C	20	Write
• SADDLE POCKET, R. D. Salisbury, Slater.....	'81	6700	7000	500	85	Craig-60	0	C*	20	\$60-70
• SEVEN W, Lee Savage, Gypsum.....	'40	8700	160	.....	16	Gypsum-10	0	RC	12	\$60
• SNOWSHOE, F. J. Kasdorf, Kremmling.....	'27	8500	600	75	40	Kremmling-15	0	C*R*T*	28	\$35-75
• SPORTSLAND VALLEY, H. C. Cook, Winter Park.....	'41	9000	300	22	45	Winter Park-2	0	R	40	\$65-75
• SPREAD EAGLE, Albert H. Peek, Westcliffe.....	'36	8200	100	.....	.....	Texas Creek-21	\$3.50	RC*	40	\$42up @
• TARRYALL RIVER, Ray Landis, Lake George.....	'37	8200	3000	100	40	Colo. Sprgs.-55	0	RC*	40	\$75
• T BAR S, Mrs. J. Fred Brown, Evergreen.....	'40	7200	160	.....	20	Denver	0	R*C*	25	Write
• TEELAWUKET, R. E. Venuti, Bayfield.....	'04	7200	3200	150	100	Durango-28	\$5	R*C*	40	\$45-60 @
• TRAIL CREEK, R. J. Swan, Livermore.....	'39	7200	15000	2600	25	Ft. Collins-40	0	R	12	\$60
• TWO BARS SEVEN, Ted Schaffer, Virginia Dale.....	'70	7500	7000	150	75	Ft. Collins-45	0	R	15	\$65
• U T BAR, R. M. Leake, Jr., Jelm, Wyo.....	'29	7965	4000	250	65	45	.....	RC	20	Write
• WIND RIVER, Helen Hutchinson, Estes Park.....	'35	9300	500	.....	25	Estes Park-8#	0	R*C*	40	\$60-75 @
• WOODS LAKE, Bowles Bros., Troutville.....	'00	9405	320	30	26	Eagle-26	\$10	C*	75	\$45 up

•Member Colorado Dude and Guest Ranch Assn.    †Member Dude Ranchers' Assn.    #Guests met at Estes Park without charge.  
NOTE: C—Cabins; R—Rooms in ranchhouse; T—Tents; \*—available with private bath.    @Saddle horse not included in rate.





## Burlington Route Travel Bureaus

ATCHISON, KAN., Second and Main Sts. .... Phone, 602  
 G. A. Tauchman. .... Commercial Agent  
 ATLANTA 3, GA., 632-633 Healey Bldg. .... Phone, Walnut 0175  
 H. B. Howe. .... Commercial Agent  
 BILLINGS, MONT., 217 Fratt Bldg. .... Phone, Auto. 4681  
 P. C. Jordan. .... Division Passenger Agent  
 BIRMINGHAM 3, ALA., 510 Brown-Marx Bldg. .... Phone, 7-1771  
 J. M. McDermott. .... General Agent  
 BOSTON 16, MASS., 80 Boylston St. .... Phone, Liberty 5584  
 C. L. Gaffney. .... General Agent  
 BURLINGTON, IA., Burlington Station. .... Phone, 2400  
 J. C. Harkness. .... Division Passenger Agent  
 CHICAGO 3, ILL., Adams at Clark St. .... Phone, Randolph 7080  
 W. M. Moloney. .... General Agent  
 CINCINNATI 2, OHIO, 505 Dixie Term. Bldg., Ph., Parkway 2454-5  
 E. G. Waterman. .... General Agent  
 CLEVELAND 13, OHIO, 1032-1035 Term. Tower. Ph., Cherry 0321  
 Robert Berman. .... General Agent  
 CODY, WYO., Burlington Cody Inn  
 J. R. Hughes. .... Passenger Agent  
 COLORADO SPRINGS, 607 Exch. Natl. Bank. .... Phone, M-390  
 Paul L. Getchell. .... General Agent  
 DALLAS 1, TEXAS, 701-2 Kirby Bldg. .... Phone, Central 3135  
 T. V. Murray, Jr. .... General Agent  
 DAVENPORT, IA., Union Station. .... Phone, 2-5304  
 M. H. Teed. .... Passenger and Ticket Agent  
 DENVER 2, COLO., 17th & Champa. .... Phone, Keystone 1123  
 F. W. Johnson. .... General Passenger Agent  
 DES MOINES 9, IA., 411 Sou. Surety Bldg. .... Phone, 3-3129  
 H. E. Smith. .... City Passenger Agent  
 DETROIT 26, MICH., 709-10 Lafayette Bldg. .... Phone, Randolph 8371  
 P. L. Smithburg. .... General Agent  
 GALESBURG, ILL., Burlington Station. .... Phone, Main 4341  
 W. E. Stouffer. .... Division Passenger Agent  
 INDIANAPOLIS 4, IND., 910 Merchants Bk. Bldg., Ph., Riley 7533  
 W. P. O'Rourke. .... General Agent  
 JACKSONVILLE 1, FLA., 304 Barnett Natl. Bk. .... Phone, 5-6669  
 J. W. Grady. .... General Agent  
 KANSAS CITY 6, MO., 1031 Grand Ave. .... Phone, Victor 6710  
 J. E. Lynn. .... General Agent  
 LEAVENWORTH, KAN., Fifth & Choctaw Sts. .... Phone, 100  
 S. E. Nirdlinger. .... Commercial Agent  
 LINCOLN 8, NEBR., 11th & P. Sts. .... Phone, 2-6611  
 W. T. Albrecht. .... General Agent  
 LOS ANGELES 14, CAL., 510 W. 6th St. .... Phone, Trinity 4528  
 L. E. Gabrielson. .... General Agent  
 MEMPHIS 3, TENN., 1834 Exchange Bldg. .... Phone, 8-7244  
 C. O. Warrell. .... General Agent

MILWAUKEE 3, WIS., 231 W. Wisconsin Ave. .... Ph., Marquette 7077  
 W. G. Shisler. .... General Agent  
 MINNEAPOLIS 2, MINN., 90 So. 7th St. .... Phone, Atlantic 4231  
 W. R. Burgess. .... General Agent  
 NEW ORLEANS 12, LA., Rm. 622-3 Canal Bldg. .... Ph., Canal 1896  
 F. J. Petagna. .... General Agent  
 NEW YORK 18, N. Y., 500 Fifth Ave. .... Ph., Penn 6-5815 to 5820  
 M. J. Fox. .... General Agent  
 OKLAHOMA CITY 2, 2902 Apco Tower. .... Phone, 7-2680  
 B. C. Milliken. .... Commercial Agent  
 OMAHA 2, NEBR., Farnam at 19th. .... Phone, Atlantic 6831  
 J. W. Sharpe. .... General Agent  
 PADUCAH, KY., 606 Citizens Sav. Bank. .... Phone, Bell 860  
 V. B. Budde. .... Commercial Agent  
 PEORIA 2, ILL., 301 So. Jefferson Ave. .... Phone, 3-5011  
 F. W. Werner. .... General Agent  
 PHILADELPHIA 9, PA., 123 So. Broad St. .... Ph., Pennypacker 3140  
 E. O. Choico. .... General Agent  
 PITTSBURGH 19, PA., 2620 Koppers Bldg. .... Phone, Atlantic 0280  
 L. M. Jones. .... General Agent  
 PORTLAND 5, ORE., 217 American Bk. Bldg. .... Ph., Atwater 8528  
 O. G. Hagemann. .... General Agent  
 PUEBLO, COLO., 622 N. Main St. .... Phone, 5398  
 G. G. Clutter. .... General Agent  
 QUINCY, ILL., 400 Maine St. .... Phone, 540 and 115  
 B. R. Newlon. .... Division Passenger Agent  
 SALT LAKE CITY 1, UTAH, 218 Kearns Bldg. .... Phone, 3-6465  
 J. H. Gregory. .... General Agent  
 SAN FRANCISCO 5, CALIF., 999 Monadnock Bldg. .... Ph., Garfield 6600  
 M. B. Baker. .... General Agent  
 SEATTLE 4, WASH., 1401-2 Dexter Horton Bldg. .... Ph., Main 5677  
 C. W. Hoefener. .... General Agent  
 SHERIDAN, WYO., Burlington Station  
 O. L. Jarman. .... Passenger Agent  
 SPOKANE 8, WASH., 1031 Old Natl. Bk. Bldg. .... Phone, Main 4941  
 J. C. Boyer. .... General Agent  
 ST. JOSEPH 2, MO., 511 Francis St. .... Phone, 2-6721  
 S. T. Abbott. .... Division Passenger Agent  
 ST. LOUIS 2, MO., 322 No. Broadway. .... Phone, Central 6360  
 R. A. Campbell. .... General Agent  
 ST. PAUL 1, MINN., 5th & Robert St. .... Phone, Cedar 6311  
 C. E. Birdsall. .... General Agent  
 TULSA 3, OKLA., 203 Mid-Cont. Pet. Corp. Bldg. .... Phone, 37443  
 E. L. Simmons. .... General Agent  
 WASHINGTON 5, D.C., 425 Shoreham Bldg. .... Ph., Executive 8700  
 A. G. Matthews. .... General Agent  
 WINSTON-SALEM 1, N.C., 529 Reynolds Bldg. .... Phone, 6212  
 R. F. Morse. .... Traveling Passenger Agent

A. COTSWORTH, Jr., Passenger Traffic Manager, 547 W. Jackson Boulevard, CHICAGO 6, ILL.

B. L. GARTSIDE, General Passenger Agent  
547 W. Jackson Boulevard, CHICAGO 6, ILL.

J. J. ALMS, General Passenger Agent  
1004 Farnam Street, OMAHA 8, NEB.



**THE DUDE RANCHES**

**AWAIT**

*You!*





DIRECT TO THE RANCHES