

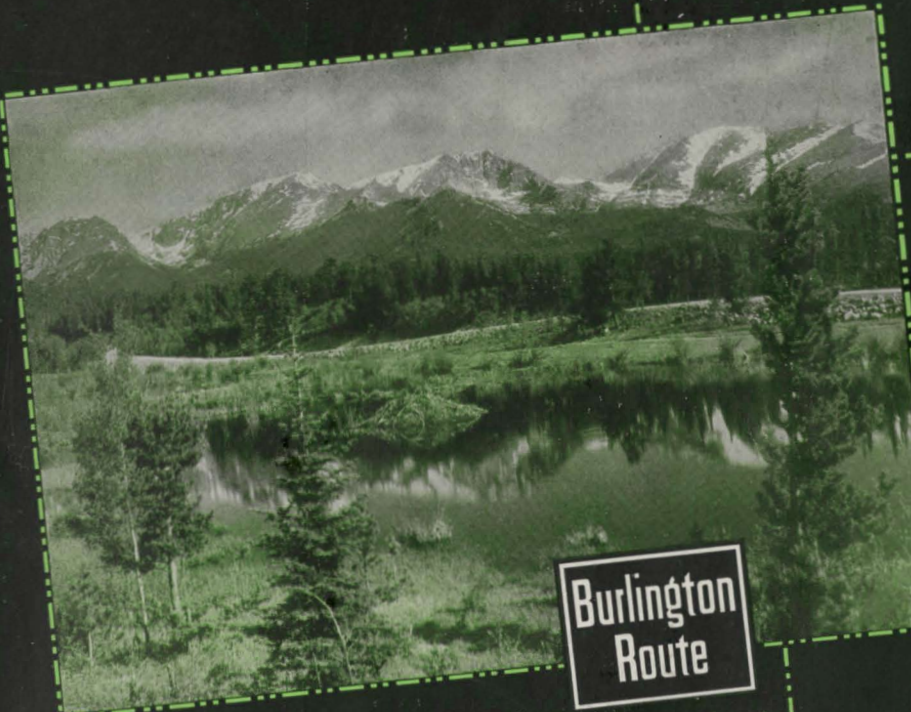
# COLORADO

WYOMING

NEBRASKA

UTAH

KAN



Burlington  
Route

OKLA

ARIZONA

NEW MEXICO

TEX

## THE PERFECT VACATIONLAND

# INDEX

	Page
Colorado—the Perfect Vacationland . . . . .	1
Rocky Mountain National (Estes) Park . . . . .	10
Denver—the Mountain Gateway . . . . .	18
Colorado Springs and the Pikes Peak Region . . . . .	22
Boulder-Glacier Region . . . . .	25
Map of Colorado State . . . . .	28-29
Pueblo and Royal Gorge . . . . .	30
Mesa Verde National Park and Western Colorado . . . . .	32
Dude and Guest Ranches . . . . .	34
Boys' and Girls' Camps . . . . .	36
List of Hotels and Resorts:	
Typical Vacation Places . . . . .	38-39
Estes Park Region . . . . .	40
Denver Hotels . . . . .	40
Colorado Springs Hotels . . . . .	40
Dude and Guest Ranches . . . . .	41-42
Boys' and Girls' Camps . . . . .	43-44
Colorado General List . . . . .	45-50
Burlington's Colorado Service . . . . .	52
Escorted Tours . . . . .	55
Map of Burlington Route . . . . .	56
Burlington Representatives and Travel Bureaus . . . . .	57



*"There are canyons that yawn as they grip you,  
There are sentinel rocks austere,  
There are operas unsung, and pictures unhung,  
And silences made to hear."*



# C O L O R A D O

## GLORIOUS PLAYGROUND OF THE ROCKIES

Man could not ask nor Nature conceive a more glorious vacationland than Colorado. Here within the boundaries of one great state lies a vast region that for sheer mountain beauty, exhilarating climate, wealth of wild life and variety of scenic wonders surpasses anything to be found on the American continent.

Wild broken mountain masses rear their heights in snowy solitude . . . majestic, everlasting, never tiring to the eye. Down their precipitous slopes move ponderous glaciers, still carving their inexorable way toward the valleys below. Tumbling mountain streams, gem-like lakes, deep virgin forests, mysterious sand dunes, prehistoric ruins, old mining camps, radio-active hot springs, and many other delightful manifestations of Nature present an almost endless array of outdoor attractions. In fact, there is no vacation pleasure or desire that cannot be easily and completely gratified in the wonderlands of Colorado.

Here are the deepest canyons in the world through which a railroad runs . . . the highest summits in the world attained by the "iron horse" . . . the highest yacht anchorage in the world. The highest skyline drive in the world crosses the Colorado Rockies, and the highest auto highways in the world ascend Mt. Evans and Pikes Peak, with scenes of breathtaking beauty all the way. Here is a country of endless, magnificent panoramas and grandeur that transcends the imagination; of superlatives dwarfed by reality. And over it all, the mountains—always the glorious mountains.

### *A Mountainland Surpassing Switzerland*

Colorado contains the greatest extent and widest variety of mountain scenery to be found anywhere in the country. The average elevation is 6800 feet above sea level . . . greater than that of any other state. Here are 325 peaks whose craggy heads rise to an elevation of more than 10,000 feet. In fact (and this may surprise you), at least 25 Colorado peaks surpass the 14,109 feet of that famous old patriarch, Pikes Peak.

Not even vaunted Switzerland can compare with such an incontestable array of "sky sweepers." They cover an area six times as great as that of the renowned European playground. There are 47 separate mountains in this great Western vacationland that rise to an altitude of 14,000 feet or more, compared with only 9 such heights in the Swiss Alps.

### *"Come UP to Colorado!"*

Wherever you go, whatever you do in Colorado, there is always the unforgettable, magnetic lure of the mountains. Night and day they dominate the scene, pulling you irresistibly toward the heights. Almost automatically, your eyes raise in anticipation and your feet feel the urge to travel the upland trails.

Colorado's mountains are unique in their accessibility to everyone. Nowhere in the world is mountain climbing such a universal vacation sport. All summer long, amateur mountaineers take keen delight in hiking to the summit of the many peaks that yield their heights with ease. There are, of course, many pinnacles that should be attempted only by the hardiest and most expert climbers . . . and for this select fraternity there is no lack of high adventure.

#### *Altitude Is No Deterrent*

For those who have never vacationed in the higher altitudes, let it be said that elevations anywhere up to 10,000 feet should entail no difficulty in breathing. When motoring to even the highest altitudes reached by auto roads, few visitors notice any discomfort. In the case of more strenuous activities at still higher elevations, such as hiking or horseback riding, it is always wiser of course to ascend into these rarefied atmospheres more leisurely than usual.

Almost everyone rides . . . some occasionally, some constantly, and some do everything but eat and sleep in the saddle. Here riding is one of the most exhilarating of sports, and perfectly safe for anyone. Good saddle horses, well broken and accustomed to the mountain trails, are available at practically any village or resort you may select. Guides, too, may be had for the longer or more difficult trips.

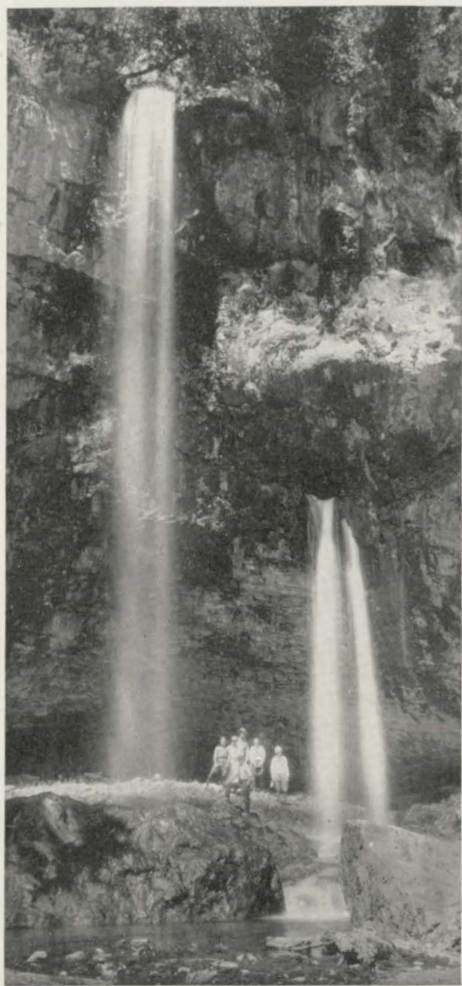
#### *Motoring Joys in Colorado*

Perhaps you would like to spend day after glorious day motoring whither fancy dictates. Well, Colorado has hundreds of miles of splendid highways, spectacular, comfortable and safe. No one need be the least timid about driving on the many thrilling skyline roads. Most of them are wide, plainly



*Pikes Peak, mighty "Patriarch of the Rockies," dominates the landscape near Colorado Springs.*



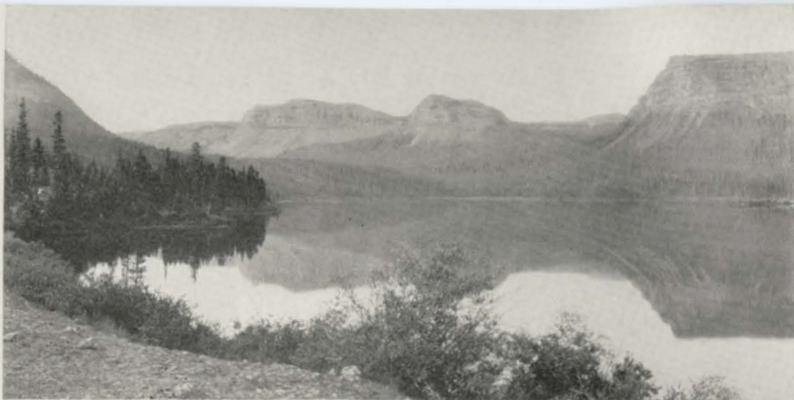


*Fair Glacier's everlasting ice hangs almost vertically from jagged peaks on the rim of the grim Hell Hole, in the Boulder-Glacier region.*

*Left—Bridal Veil Falls' feathery cascade and famed Spouting Rock, a favorite tourist destination in Western Colorado.*

*Spring in the Colorado Rockies—countless melting snow fields of the Arapahoe Peaks find their way into shimmering Long Lake.*





*Mirror-like lakes, teeming with mountain trout, lure the ardent fisherman in Western Colorado.*

marked and well protected, with frequent switchbacks leading easily and smoothly to the highest summits.

To enjoy these scenic highways to the utmost, it is neither necessary nor particularly advisable to drive one's own car over a long, hot tiresome route to Colorado. It is far more comfortable, far safer and much faster to go in the coolness and comfort of a modern, air-conditioned Burlington train, availing oneself of motor transportation on arrival in the West. This can be done in several ways.

Today you can ship your own car to Colorado over the Burlington at remarkably low cost. For passengers holding two or more tickets good in standard sleeping or parlor cars, or three or more tickets good in coaches, chair cars or tourist sleeping cars, the cost is little more than a one-way first-class fare. For example, the charge from Chicago to Denver is \$41.45, and your car will be there almost as soon as you arrive.

You may also rent a private car at a number of points in Colorado and drive when and where you will over smooth, well-graded roads. The rates are reasonable and several reputable rental services are available. Many of the better known highway trips also are made by modern motor buses operating on regular schedules from such points as Denver, Boulder, Fort Collins, Colorado Springs, Pueblo and Canon City.

#### *Glorious National Forests*

If your idea of a perfect vacation is to shun the beaten paths and "rough it," nowhere will you find better facilities or more ideal surroundings. Bring your own duffle or depend on local experienced outfitters to provide the necessary equipment . . . guides also if you particularly dislike camp chores. Seventeen national forests, with millions of acres of splendid timberland, lakes and streams, are open to hiker, horseman and camper alike. As a matter of fact, all summer long the entire state is one vast camping ground where young and old find happiness and new zest for living, each in his own way.

Colorado is truly every man's Vacationland . . . big enough for all without crowding, compact enough for anyone to get around easily and quickly. Those who travel on a limited budget will find just as much opportunity for recreation and pleasure as those to whom expense is no consideration. Nature's generous hand holds the key to worthwhile living for everyone



to summer joys you will long remember, to gorgeous everlasting landscapes by the Master Artist.

There are hosts of well-known watering places offering all manner of hot and cold curative springs. These springs are well scattered throughout practically every section of the state and are unusually accessible. Thousands of people come to Colorado annually to enjoy these health-giving baths, many of which are highly radio-active and of considerable medicinal value. The combination of the curative waters and the clear, invigorating mountain air works wonders.

#### *Around the Eastern Gateways*

Northwest from Denver and Boulder lies the wonderful region of mountains, valleys, lakes and forested slopes in and around Rocky Mountain National (Estes) Park — one of two great national parks included in Colorado's far-flung boundaries. This vast area is a glorious mountain garden, one of the most popular of all the Western vacationlands. South of the park, continuing along both sides of the backbone of the Rockies, is the wild, precipitous Boulder-Glacier region of peaks, gorges and ice fields . . . famous among geologists. Nearby are a number of fascinating "ghost" towns which figured so prominently in Colorado's early romantic gold mining days still redolent of those historic, turbulent times.

Colorado Springs is the focal point for excursions into the innumerable reaches of that famous scenic region which includes Pikes Peak, Manitou and Garden of the Gods. Here also are located a large group of curative mineral springs. Farther south lies Pueblo, an important industrial city and one of the principal gateways to San Isabel National Forest and the playgrounds of Western Colorado.

#### *Western Colorado*

While perhaps not as well known as other recreation regions in the state, the seemingly limitless section of Western Colorado is infinitely varied in its terrain and scenic wonders. There are great mountain masses such as the Sangre de Christo, San Miguel, San Juan, Gore and Park ranges . . . Uncompahgre, Cochetopa, Montezuma, Arapahoe, and Holy Cross national forests . . . Colorado's famous mining districts of Leadville (at an altitude

*The grotesque eroded spires of Wheeler National Monument, southwestern Colorado.*





*Snow-clad peaks, deep green forest and shining lake waters—Denver Mountain Parks.*

*A prehistoric watch tower of the cliff dwellers . . . Mesa Verde National Park, southwestern Colorado.*





well over 10,000 feet), Ouray, Silverton and Telluride . . . Grand Mesa, a wonderful flat top mountain raised by some prank of nature . . . hundreds of hot mineral springs, etc.

In the far Southwest corner lies Mesa Verde National Park, a strange land of age-old mystery, containing the relics of a long-forgotten civilization and well preserved ruins of a race of cliff dwellers who are still a puzzle to the historians. Nearby is the Yucca House National Monument, another place of prehistoric ruins.

Western Colorado contains five other national monuments—areas set aside by the U. S. Government to perpetuate unique natural phenomena. There is the Colorado National Monument near Grand Junction; Wheeler, near Creede; Great Sand Dunes, near Redwing; Holy Cross, near Redcliff; and the famed Black Canyon of the Gunnison River, near Montrose. Each of these places has some special, inimitable charm of its own.

Colorado's wonderful climate is in perfect complement to the sights you see, the things you do, and the places you choose to visit. The crisp, dry air, almost crystalline in its purity, invigorates both mind and body. It gives one new health and strength, sweeps away the cobwebs from a brain slowed down by the struggle and tumult of this workaday world. Normal perspective returns full force, true values reappear in their proper light, and life seems much more worth while.

### *A Land You'll Never Forget*

Who could forget the enthralling vision of mountain peaks at sunset? Who so calloused as would not breathe more deeply to see, from some hard-won summit, the wilderness world far far beneath? How erase from memory the vision of a wild and silent ice-fed lake, mirroring the brooding moun-



Aerial view of Denver, the "Mile High City," showing the golden-domed State Capitol at lower right.



*A gigantic cross in snow reaches to the 13,978 foot tip of the Mount of the Holy Cross.*



*Lovely Hanging Lake, a renowned beauty spot in the vast vacationland of Western Colorado.*



*As an artist might paint a Colorado Summer . . . a bridle path lined with quaking aspen, leading to the mountains.*





*A thrilling pause along the Trail Ridge Road, splendid motor highway through the heart of Rocky Mountain National Park.*

tains and the sky's inconceivable blue? Everything you do or see impresses itself indelibly on your memory as treasured incidents in a perfect vacation.

The smell of wood smoke drifting through the pine trees is like some rare and heady perfume in the crisp clean air. Long after you have left the Rockies, you will remember the sweet aroma with a strong nostalgic longing. It will take you back to the glorious Skylands of Colorado . . . to a land almost too beautiful for reality, yet always ready and waiting for you.

Some night at home far away, you will see in the leaping flames of your fireplace the outline of majestic peaks silhouetted against a flaming sky. Wind from the mountain heights will ring once more in your ears and the smell of the burning logs on your hearth will carry you back to radiant summer days in the mountains. Remembering the thrill of it all you will say, echoing the thoughts of thousands of other visitors to this mile-high wilderness: "I'm homesick for Colorado, and I'm going back again!"

Well, why not go *this year*?

\* \* \* \* \*

Colorado is "yours for the asking"—now more easily, quickly and comfortably reached than ever before. Just overnight from sunstroke and sticky heat, you will find quick relief from the severity of any American summer . . . warm, pleasant days and cool, crisp, starry nights—a combination that has made Colorado famous all over the world. Summer and spring are one and the same season . . . summer by day, and wonderful spring by night.

On the Burlington's fleet of air-conditioned trains, your vacation begins when you step aboard. Whether you take the famous Diesel-powered stainless steel Denver Zephyrs or the Exposition Flyer from Chicago—the General Pershing Zephyr-Exposition Flyer from St. Louis and Kansas City—your trip via the Burlington Route will add hours of time and rest to your vacation.

# ROCKY MOUNTAIN NATIONAL

Draw a line from Denver . . . 60 miles due northwest, or 75 by broad smooth highways. There you will see Rocky Mountain National Park, a pleasant, a thrilling, indeed a perfect vacationland. Proof of its universal fascination lies in the fact that several hundred thousand people, representing every state in the Union as well as the principal countries of the world, come year after year to this, one of the few remaining unspoiled beauty spots on the globe.

It is a land of incomparable paradoxes, of contrasts that stir the mind to awe and wonder at Nature's miracles. Tumbling mountain streams fade into dream-like still lakes where every twig is mirrored with glassy perfection. Alpine flowers thrive at arm's length from mighty glaciers and barren rock masses. Wide smooth highways ascend gradually alongside narrow twisting trails that climb sharply toward the clouds. Bitter winds whistle over the peaks, while the quaking aspen shiver gently in the warm valleys. Anything

grows in the fertile valleys . . . but above timberline, life is a constant grim struggle with the elements.

## *Famous Tribute*

Since the early Seventies, the most renowned of the world's lovers of the high places have paid high tribute to Estes Park. They know it as a painter's paradise, bold, warm, colorful. Bierstadt, the great landscape artist, much of whose best work was done in Estes Park over sixty years ago, said that in this region were to be seen America's finest compositions for the brush. Similar tribute was paid by the English sportsman, Lord Dunraven, who visited Colorado in the Seventies and erected a hunting lodge. Since the day of Dunraven . . . and he was the Sir Thomas Lipton of his time . . . a beaten path has been trod to this great outdoor playground.

There are no poisonous plants, no harmful insects, no reptiles in the Park. In fact, there is nothing that runs, walks, crawls, growls or flies to cause man, woman or child a moment's uneasiness. Even the water tests 99 per cent pure. Strange as it may seem, the wildest creature is *man*, and all the wild life flees before him.

The National Park Service patrols the park region with well-informed and courteous rangers who are always willing to help. Ranger headquarters are maintained in Estes Park village. A system of signs and markers, trails, roads, telephones and other safeguards enable all to enjoy the country to the fullest, in safety and comfort. If ever one is lost, the wisest thing is the easiest thing . . . just *walk downhill!*



*The granite Pillars of Hercules in the famed Big Thompson Canyon, the northern entrance to Estes Park.*



## (Estes) PARK

Like the Engadine of Switzerland, Estes Park is an upland basin or bowl, 6000 feet above sea level. (A "park," in Colorado, designates a mountain meadow or valley.) Rocky Mountain National Park surrounds Estes Park on three sides, extending some 15 miles north and south and 20 miles westward. Through the heart of this vast area runs a splendidly representative stretch of the great Front Range of the Rockies . . . a mighty segment of the Continental Divide, thickly timbered by the Roosevelt, Arapahoe and Routt National Forests.

### *The Front Range*

The Front Range is characterized by narrow gorges and broad open parks surrounded by towering snow-capped heights which rise abruptly from the valleys. Down the precipitous eastern slope, where sheer drops of 2000 and 3000 feet are not uncommon, water drains into the Mississippi and Atlantic Gulf. The gentler western slope forms the headwaters of the Colorado River, which finds its tortuous way through the Grand Canyon of Arizona to the Pacific Ocean.

The special, inimitable charm of the Park is its adaptability to anyone's conception of ideal outdoor vacationing, and its amazing accessibility. Be it wilderness life or days of luxurious ease, strenuous sport or rest and peace . . . whatever your desire, satisfaction awaits you.

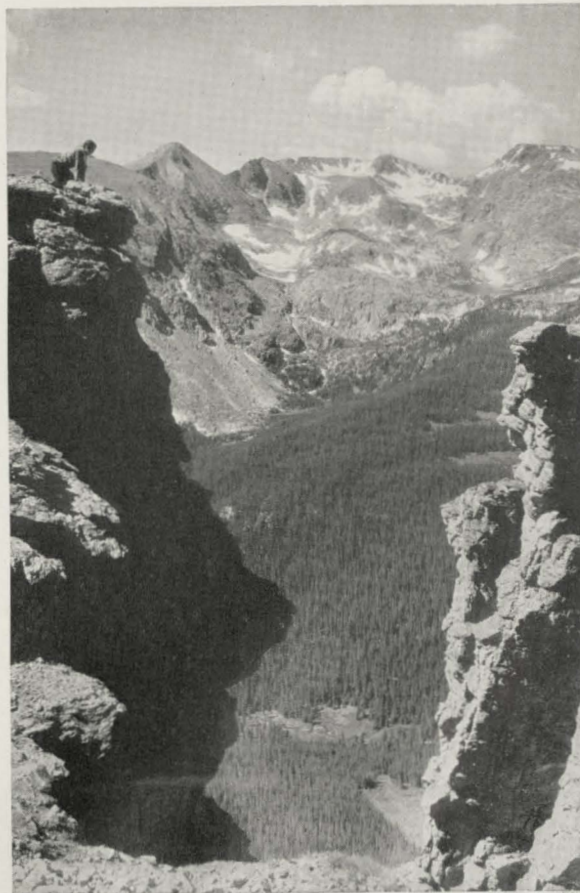
### *Perfect Climate*

The climate is light, very dry, and wonderfully stimulating. In spite of the altitude—7500 to 14,255 feet—the sunshine is warm, bright and almost constant throughout the summer. Nights are cool, even cold; blankets



*A happy riding party, starting out for a glorious day in the unfenced wilderness of the Colorado Rockies.*

*Rock Portals on the Trail Ridge Road, with Long's Peak towering in the distance.*





are always welcome, and sound sleep is the rule.

The official summer season in Rocky Mountain National Park is June 15 to September 20, when all hotels are open and daily transportation is available. Desirable accommodations, however, are available from early June to the first of October. Actually, the park is accessible all year.

#### *Sports Galore*

What can one do in Rocky Mountain Park? You can hike, ride, motor, climb mountains, fish, camera hunt, swim, play tennis or golf . . . in fact, just about anything you like to do in summer. Horseback riding is probably the most popular sport, because it is so easy and safe for even the most timid of tyros, and because one can ride almost anywhere. Some, however, prefer to hike and climb the days away, gaining new health and vigor from the keen tang

*The Notch on Long's Peak stands out in bold relief as seen from the Bear Lake Road.*

---

of pine-laden air, the feel of the good earth beneath their feet. Eventually, leisurely, they may find their way to a summit or two, yet wisely do not make such an attainment an end in itself.

Another sturdier breed shuns the lower levels as a matter of choice and reaches always for the heights. Few are the peaks that have not yielded their summits to this courageous clan who stalk the eagle to his eerie lair and revel in the bite of the wind as it sweeps the mountain passes.

#### *Wilderness Students*

The geologist is in his glory in the Park, for glacial records of the Ice Age are amazingly legible. Almost anywhere, one can study fascinating glacial forms . . . V-shaped valleys, cirques, lakes and moraines. Here, in some terri-



fic upheaval of the dim dark past, a mountain was made. This tree-choked chasm, this trail of huge boulders, that sheer wall of granite—all are indelible records left by some mighty glacier.

For the botanist, the entire Park is a vast wild garden, profuse with color from early June to late September, even into October. The Park's amazing floral album includes over a thousand species . . . fringed blue and other gentians, numerous columbines, martensia, phlox, primrose, Mariposa lilies, larkspur, Indian paint brush, lupin, and the Alpine buttercup that pushes up through the melting snowdrifts.

The thick, towering growths of evergreen trees are a revelation. Most characteristic are the Ponderosa and lodge-pole pines, Douglas fir and blue spruce in the lower valleys; nearer timberline, birch, Engelmann spruce, Alpine fir and limber pine. Other familiar trees are the lovely quaking aspen

(a riot of golden beauty in the late Fall), Rocky Mountain maple, alder, and Arctic willow.

### *Great Trout Fishing*

Ardent fishermen have long since discovered that some of the finest mountain streams in the West flow in or near the Park, stocked annually with millions of trout from local fish hatcheries.

Besides all this, everyone of course indulges the universal "sport" of loafing . . . taking one's blissful ease on some sunny veranda, under the whispering pines, or along a merry mountain brook. Just to relax and rest in utter peace, soaking in the sunshine and glorious ozone at every pore, gives one a new lease on life. And who shall say that that is not the best way to enjoy the mountains, after all?

### *Estes Park Village*

Estes Park village, picturesquely situated at the confluence of the Big

---

*Hidden Valley and the snow-clad Mummy Range, in Estes Park.*



Thompson and Fall Rivers, is the logical headquarters for visitors to Rocky Mountain National Park, since all main gateway roads converge there. The village has only a small permanent population, but is well prepared for summer visitors' needs, with excellent stores, garages, swimming pool, golf courses, moving picture theater, school, Protestant and Catholic churches, etc. A handsome auditorium with a capacity of 1200 makes Estes Park a highly desirable summer convention city.

Several score first-class hotels, resorts and lodges are scattered in and around the Park, each offering some distinctive type of vacation life. Horse-shoe Park, seven miles west of Estes Park village, is a large, forest-edged valley of flowered meadows and rippling streams. Fall River and Fall River Road flank it on the north, Trail Ridge Road on the south . . . both converging to cross the Divide at Fall River Pass, 11,797 feet high. North of this park along Roaring River is the wild, wonderful vicinity of Ypsilon and Lawn Lakes, Ypsilon Peak, Hagues Peak, Mummy Mountain and Hallett and Rowe Glaciers.

#### *Peaceful Upland Valleys*

Five miles south of the village is glacier-carved Moraine Park, the open valley of Big Thompson River. From here delightfully popular trails mount to Fern and Odessa Lakes, deep in the rocky embrace of a great canyon. Beyond lies the tumbled vastness of the main Front Range.

Bartholf Park, two miles south of Moraine, is traversed by Bear Lake Road along sparkling Glacier Creek.

Bear Lake is the starting point of trails into the great Wild Gardens . . . to mirror-like Dream Lake, Emerald Lake, Tyndall Glacier and Loch Vale. The Wild Gardens region is one of the loveliest scenic areas of the Park. Between its steep granite ramparts, fantastically shaped, lovely cascades somersault down to rich forests below, and wild flowers dot the upland glades in a riot of color. From Andrews Glacier and from Taylor Glacier, melting snows thread their way through romantic, cliff-cradled Loch Vale and The Loch, unequaled for sheer rocky wildness and beauty. At the head of the vale, walls of rock rise precipitously 3000 feet above icy, sky-blue lakes, and flowers grow profusely in the mossy soil.

To the east lies Glacier Gorge, bounded by McHenry's Peak, Thatchtop, Long's Peak and the great Divide. No trail enters this noble gorge; it is indescribably wild, yet well worth the effort of exploration.

#### *The Long's Peak Trip*

Long's Peak, most famous of all the heights of Rocky Mountain National Park, rises 14,255 feet high, its snow-clad head towering more than 5000 feet above the valley floor. The trip to the summit is one of the most breathtaking of experiences. It is a hard, long trip, requiring guides and an overnight stay in a shelter cabin high up on the mountain's windy face. It is cold up there on the rim of the world . . . but the pygmy world lies below you, spread out for miles on end, and you are its conqueror!

Two trails ascend Long's Peak, one from Bear Lake, the other up Battle Mountain to the east. Horses are used only as far as Boulder Field shelter cabin, after which one climbs the rest

---

*No vacation experience can compare with a ride to a mountain summit to witness the breath-taking beauty of a Colorado sunset.*







*In the summertime, the broad meadows of Rocky Mountain National Park are brilliant with many varieties of wild flowers.*



*Grand fun in Estes Park . . . a steak fry under the brilliant stars, with cowboy minstrels providing musical entertainment.*

of the way on foot, up past the curious Keyhole and the Narrows, up to the actual thrilling summit.

The Wild Basin, less well known than some other sections of the Park, lies south of Long's Peak, eastward from the Continental Divide. In this superbly beautiful area are lakes and waterfalls, wild gorges and many rocky peaks, frequently 13,000 feet high. It is a marvelous camping and hiking ground, beloved by many a true lover of Nature.

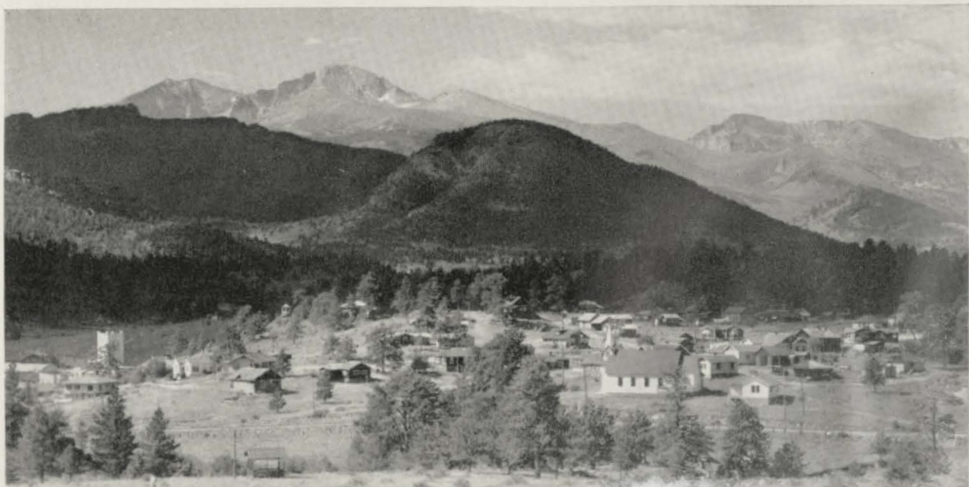
#### *Park Wild Life*

The Park is a natural home for bear, deer, Rocky Mountain sheep, beaver and other wild animals, all of which are protected by government regulations. Bighorn sheep may occasionally be photographed by a lucky few, as on

Specimen Mountain during the summer. Beaver are rapidly increasing, and their dams may be found along many a stream where the quaking aspen grow. Unlike the ubiquitous chipmunks, squirrels and woodchucks, the beaver are seldom seen. Deer are a common sight, and elk also are no rarity. Bears and mountain lions, however, as a rule stay well hidden.

There are more than a hundred species of birds, among them the bluebird, wren, hermit thrush, humming bird, white-crowned sparrow, and that marvelous singer, the solitaire. The Rocky Mountain jay, chickadee, woodpecker, magpie, and the most curious bird in the Rockies, the water ouzel, are all-year dwellers. Above timberline one also finds the ptarmigan and the charming rosy finch.

*Estes Park village, headquarters for Rocky Mountain National Park.*



Timberline lies at about 11,000 feet in Rocky Mountain National Park . . . a wild, weird region ruled by Nature's inexorable law, "survival of the fittest." Here stately spruces creep like vines, their trunks twisted and bent as they struggle through the rocks. Higher up these give way to scraggly growths, and finally to tough grass, hardy mosses and tiny Alpine flowers, a source of constant delight.

At even the highest altitudes, bright flowers grow in sheltered gorges, and the beautiful columbine, Colorado's state flower, is found in the lee of snowbanks and glaciers. Above rise the bare mountain masses of the far-flung Rockies. Clouds sweep around them. Thunderstorms gather swiftly on their sides . . . thrilling, awe-inspiring, but soon dissipated by the warm bright sun.

### Grand Lake Region

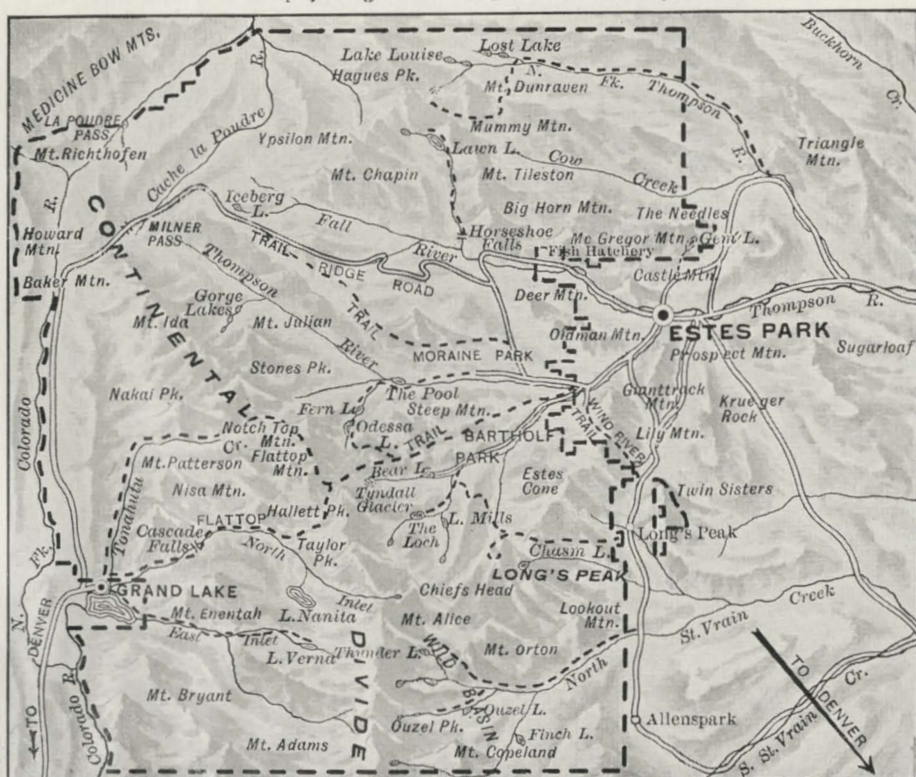
The western gateway to Rocky Mountain National Park is Grand Lake village, on the shore of Grand Lake and



Stone Mountain reflected in the quiet, pine-bordered waters of Fern Lake.

connected with Estes Park by a splendid motor road across the Divide. Some two miles long and a mile wide, the lake lies a mile and a half above sea level. Here the Grand Lake Yacht Club has the highest yacht anchorage in the world and annually holds a midsummer Lipton Cup regatta. Grand Lake is one of the largest bodies of water in the state, and many trails lead into the mountains rising from the shore line.

Map of Rocky Mountain National (Estes) Park.





## Summer Excursion Fares

Round-trip summer excursion tickets to Estes Park, Colorado are on sale during the summer months at all railroad ticket offices in the United States, the fare to the Park being \$8.00 higher than the summer excursion fare to Denver. Such tickets include rail transportation to Denver and return, also motor transportation between Denver and Estes Park village. They are interchangeable, honored via railroad to any of the Park gateways (Boulder, Lyons, Longmont, Loveland or Fort Collins), or by motor for the entire trip beyond Denver in either direction.

Summer excursion tickets to points west of Denver, when routed via Denver or the other Park gateways, permit stopovers for the short side trip to Rocky Mountain National Park—allowing as long a stay as one desires within the final return limit of rail ticket.

## How to Reach the Park

Excellent motor service to and through Estes Park is provided by the Rocky Mountain Motors Co., from Denver, Boulder, Longmont, Loveland, Lyons or Ft. Collins. Modern, high-powered motor buses operate on regular schedules throughout the summer, over several scenic routes. The Big Thompson Canyon route, via Loveland, traverses the celebrated Box Canyon in the Roosevelt National Forest, towering hundreds of feet on either side of the winding Big Thompson River. Twisting and turning as it climbs the gorgeous canyon, the road suddenly emerges into the northeast section of Estes Park.

Over the North St. Vrain route, via Longmont and Lyons, the road follows the St. Vrain River, through a wonderfully rugged country, back and forth across sunlit canyon and spar-

lingstream, ever upward. Pausing at the crest of Park Hill, the road leads rapidly downward to enter Estes Park from the southeast. The South St. Vrain route via Boulder or Longmont negotiates the entire length of the canyon of South St. Vrain Creek from Lyons to Allen's Park, where the road turns north along the mighty fringe of Rocky Mountain National Park and through Roosevelt National Forest to reach Estes Park from the south, over the famous Peak-to-Peak Highway.

## Motor Bus Schedules

### Via Big Thompson or North St. Vrain Canyon

Read Down		(June 1-Sept. 30)		Read Up	
* 9:30 AM	12:30 PM	Lv. Denver	Ar. *5:45 PM		
	13:33 PM	Lv. Boulder	Lv.		
*10:33 AM		Lv. Longmont	Ar. *4:42 PM		
	14:10 PM	Lv. Lyons	Lv.		
*11:11 AM		Lv. Loveland	Ar. *4:12 PM		
*12:25 PM	14:53 PM	Ar. Estes Park	Lv. *3:00 PM		

\*Via Big Thompson Canyon.

†Via North St. Vrain Canyon.

### Via South St. Vrain Canyon

Read Down		(June 15-Sept. 20)		Read Up	
Mls.				Mls.	
8:45 AM	0	Lv. Denver	Ar. 89	12:35 PM	
9:48 AM	32	Lv. Boulder	Lv. 57	11:33 AM	
10:28 AM	50	Lv. Lyons	Lv. 39	11:02 AM	
11:21 AM	71	Lv. Allen's Park	Lv. 18	9:59 AM	
11:27 AM	74	Lv. Copeland Lake	Lv. 15	9:53 AM	
11:31 AM	76	Lv. Meeker Park	Lv. 13	9:49 AM	
11:38 AM	80	Lv. Longs Peak	Lv. 9	9:42 AM	
12:05 PM	89	Ar. Estes Park	Lv. 0	9:15 AM	

In addition to these motor routes, a fourth route known as the "Grand Lake Circle Tour" enters Estes Park via Big Thompson Canyon, crosses the Continental Divide to Grand Lake via the world-famous Trail Ridge Road, and returns to Denver on a great circle via Berthoud Pass and Idaho Springs . . . connecting with the Burlington's "Denver Zephyr" for the East. For rates, consult your local ticket agent.

### 240-Mile Grand Lake Circle Tour

Mls.		(June 15-Sept. 20)		Schedule	
0	Lv. Denver	9:30 AM	1st day		
82	Ar. Estes Park (lunch)	12:25 PM	1st day		
82	Lv. Estes Park	2:30 PM	1st day		
131	Ar. Grand Lake (overnight)	5:30 PM	1st day		
131	Lv. Grand Lake	9:00 AM	2nd day		
202	Ar. Idaho Springs (lunch)	11:59 AM	2nd day		
202	Lv. Idaho Springs	1:30 PM	2nd day		
240	Ar. Denver	3:30 PM	2nd day		

Peaceful hours in the sunshine on the shores of Grand Lake, on the western slope of the Continental Divide.



# DENVER—The Mountain Gateway

Denver, the "Mile-High Queen of the Rockies," is the logical gateway to Colorado's endless display of wonders and fascinations. It is the portal to 12 national parks and 32 national monuments in the vast Western Wonderland. This thoroughly modern city is known throughout the country as a genial host experienced in catering to the needs and desires of a great multitude of visitors who annually make the city their permanent or temporary headquarters for Colorado vacations.

## *The Mountains Call*

There is an exhilarating sense of freedom about Denver that sets it apart from other cities of a quarter million people. You feel it the moment you step off a Burlington train from the East. Perhaps it is the constant sight of the glorious mountains, only twelve miles away, for wherever you go there is a great view of two hundred miles of the Snowy Range, from Long's Peak to Pikes Peak. Your imagination is stirred, your blood seems to run a little faster, and you are eager to roam among the peaks for days and days of boundless joy.

The city has a remarkable climate—dry, crystalline, never very hot in summer nor severely cold in winter. Days are bright with sunshine, but

never humid or oppressive; the crisp nights invite blankets. Denver's altitude is exactly one mile (5280 feet), and the health-giving mountain ozone works wonders on the constitution. The "two-weeks vacationer" gets more tonical benefit at a lower comparative cost than in almost any summer region accessible in a limited time.

Little wonder, then, why Denver is today an inviting summer convention city. It is just a short distance from lofty mountains, mighty glaciers, wilderness lakes, sparkling streams that teem with trout, great forests, historic places, and peaceful valleys where every hour is a joyful experience in living. Broad smooth highways grid-iron the lower levels, while the higher country is fretted with trails for hiker and horseman. Rail and bus lines operate from Denver over scenic routes to most of the more popular sections of the state.

## *A City of Beauty*

Visitors to Colorado are deeply impressed with the beauty of this western metropolis, its impressive array of attractions. There are 44 city parks, two municipal bathing beaches, golf courses, tennis courts and many civic buildings which merit inspection. One

*One of the many beautiful city parks in Denver.*







*Skiing in midsummer! . . . on a glaciated slope in the Denver Mountain Parks.*

of the most imposing structures is the State Capitol with its gold-encrusted dome . . . an architectural detail peculiarly appropriate. It was the discovery of gold in 1859, at Idaho Springs 40 miles away, that gave the impetus to Denver's rapid growth. The panorama of peaks seen from the dome is an inspiring one.

Other outstanding edifices include the State Museum, built of native marble and housing a splendid collection of ancient cliff-dweller relics . . . the United States Mint . . . Colorado Museum of Natural History, one of the foremost in the country, with absorbing exhibits of Western America fauna and minerals and the famous Civic Center, featuring a great open-air Greek Theater seating 5000, where concerts are held weekly throughout the summer.

Outstanding among Denver's num-

erous outdoor lures are the renowned Denver Mountain Parks . . . the most unique, municipal-owned scenic region in the world. Over two score separate areas, covering approximately 150 square miles of healthful playground, are included in this great park system, all connected by over 100 miles of fine highway.

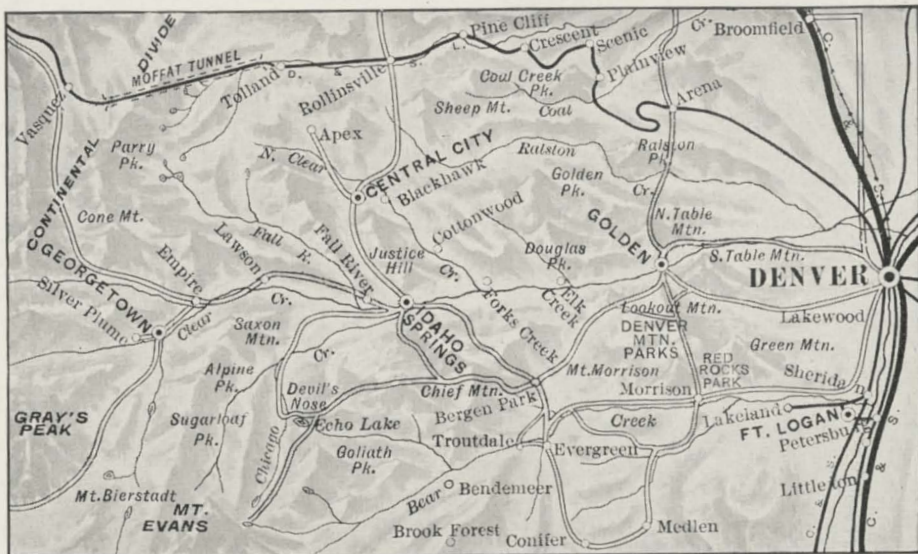
In the midst of this area are 18 peaks over two miles high, including snow-capped Gray's Peak, Torrey's Peak, Mount Evans and Mount Bierstadt. There is also a large game preserve where one may see buffalo, elk, antelope and mountain sheep in their native habitat.

### *Glorious Motor Trips*

Reached by automobile in an hour or less, over splendidly scenic highways, are all manner of delightful summer hotels, resorts, cottages and camping spots. It would be difficult to imagine a more easily accessible or diversified vacation area than these mountain parks, offering fascinating motor trips practically all year 'round.

One of the most wonderful trips encircles the major portion of the entire park system, yet can be made in just one day. After leaving Golden, it ascends the serpentine Lariat Trail to Lookout Mountain which, in truth, "looks out" over the surrounding plains. Here is the grave of "Buffalo Bill" Cody, and in Pahaska Tepee Museum close by are many relics collected by him during his glamorous life. At Genesee Park the road spirals up to the top of Genesee Mountain, then continues on through Bergen Park to Clear Creek and Idaho Springs of early gold mining fame.

Turning south to follow Chicago Creek, the route takes a thrilling ascent to Echo Lake, thence over the world's highest mountain highway to the crest of Mount Evans (14,260 feet) for a mighty view of jagged peaks extending for 100 miles. The return route is



Map of Denver and Vicinity.

equally delightful . . . via Troutdale, Evergreen Park, through Bear Creek Canyon to Morrison, where many a dinosaur's bones have been excavated; then north through Red Rocks Park, newest of the Denver Mountain Parks.

Another worthwhile trip follows Clear Creek past Idaho Springs to the old mining districts of Empire, Georgetown and Silver Plume, surrounded by towering, mine-scarred peaks. Here is the noted Georgetown Loop, and on the registers of Georgetown's once-famous hotels are the names of many a

notable of the 1870's. Some of these "ghost" towns of a few years ago now are coming back, and a number of abandoned diggings have been reopened.

Equally close to Denver is another popular vacation region, the canyon of the South Platte River . . . one of the best known of Colorado's many resort sections. The mouth of the canyon is only 28 miles from the city, and for 40 miles beyond there are numerous delightful vacation places . . . hotels, furnished cottages and peaceful mountain resorts . . . on both sides of the river. From these cool retreats the opportunities for riding and hiking are unexcelled, and the region is widely known for the excellent trout fishing it affords.

### Moffat Tunnel Route

Trains operating from Denver, through the Moffat Tunnel and mighty Gore Canyon, thence over the new Dotsero Cutoff along the Colorado River, give the Burlington a direct and splendidly scenic route into Western Colorado. One thinks of the Colorado River in terms of tremendous canyons, gorges and yawning chasms, and nowhere is this conception more justified than where the river runs through



The "Pagodas" along the foaming Colorado River, on the Dotsero Cutoff into Western Colorado.





*Amazing twists of Lariat Trail up Lookout Mountain to Buffalo Bill's grave.*

Gore Canyon. Mile after mile of rugged, colorful and well-nigh overpowering grandeur make this one of the greatest of chasms. The river roars white and foaming between dizzy granite precipices which tower aloft 2000 feet, for here the Rockies reveal themselves at their mightiest.

This is the stupendous Moffat Tunnel Route which has given the Burlington a direct route through Colorado to California . . . an important link in its through train service to the Pacific Coast. For 232 miles westward from Denver it penetrates the heart of the Colorado Rockies through a wilderness region hitherto known only to hunter, trapper and miner. It pierces snow-

capped James Peak with the 6-mile Moffat Tunnel, nearly a mile below the crest; threads the grim walls of Gore Canyon, and spans the turbulent waters of the Colorado River in the heart of Red Canyon on the Dotsero Cutoff.

Construction of the Moffat Tunnel Road, in the face of crushing odds and in spite of the almost unheard-of ruggedness of the terrain, stands as a truly remarkable engineering achievement. A trip over this western route reveals a thrilling cross-section of Colorado's Alpine grandeur, from the golden gulches of placer mining days to the high, desolate places where the snows of winter never melt.

*Vacationists pause to watch a gathering storm among the peaks overlooking Red Rock Lake.*




# COLORADO

Colorado Springs is more than an important gateway to the Colorado vacation regions . . . it is a vacation region in itself. Matchless climate, predominantly sunlit days and a great wealth of outdoor attractions within a short distance of this city "where plain and mountain meet," account for its enviable position in the front ranks of famous resort sections in the Western mountainlands.

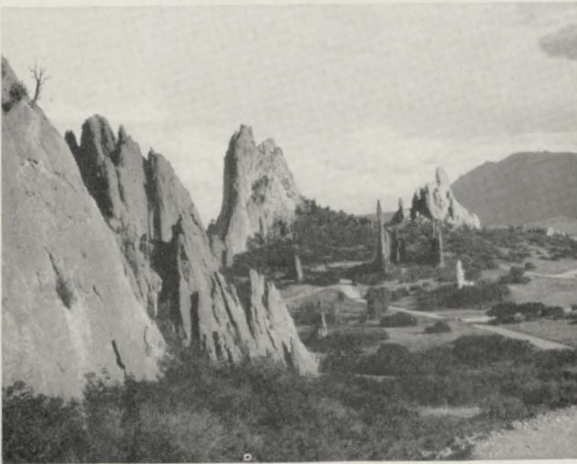
The summer season is exceptionally long at this unique city on the fringe of the broken Rampart Range of the Rockies, 75 miles due south of Denver on the Burlington-Colorado & Southern Lines. Lying at an altitude of approximately 6000 feet, it is always cool in the shade there, always warm in the sun, and outdoor life for visitor or resident is delightful practically every day in the year.

So close is Colorado Springs to a multitude of superlative vacation places, that one can enjoy—almost anywhere—the delightful combination of life in the heart of the mountains with all the conveniences of a modern city close at hand. Just 15 minutes by automobile and you are right among the peaks . . . in the midst of the famous Pikes Peak region. No similar area of its size on the globe contains so many glorious vistas of peaks, valleys and tumbling water, picturesque camping places, and countless other scenic wonders . . . dominated at all times by Pikes Peak, the "patriarch of the Rockies."


Pikes Peak! There is a name that stirs the imagination. It overshadows the entire vicinity with its mighty magnificence, and has been seen and ascended by more people than perhaps any other mountain in America. Discovered in 1806 by Lt. Zebulon M.



*Pikes Peak Avenue, Colorado Springs, leads directly into the glorious mountains.*



*Gigantic natural obelisks of brilliant red feature the beauty of Garden of the Gods.*



*The snowy summit of Pikes Peak rises above a collar of clouds in eternal fascination.*



# SPRINGS and PIKES PEAK

Pike (who incidentally, appalled by its height, said it would never be scaled), for many years it was the snow-capped beacon for the westbound covered wagon trains. Far from being Colorado's highest summit (25 others surpass its 14,110 foot altitude), Pikes Peak still stands alone as a glorious symbol of the Great West. It is, indeed, synonymous with the best of the high places in the Colorado Rockies, one of the most illustrious "highlights" of the West.

Today Pike would be amazed if he could see how many thousands of visitors reach this lofty summit every year. All summer, they ascend in a constant stream . . . over a wonderfully scenic, free auto highway; via cog railway; on horse, and even (hardy souls) on foot. Few attempt to hike it, except for the famous Ad-A-Man Club of Colorado Springs, whose members climb to the top of the peak every New Year's Eve to initiate one new member annually and celebrate the new year with fireworks.

No matter how you reach the summit, a never-to-be-forgotten sight awaits you. Sixty thousand square miles of mountain and plain are visible in glorious panorama, from the peaks of the Continental Divide 100 miles north to the serrated pinnacles of the historic Sangre de Christo range southward. Distant storms form before your eyes, seas of clouds billow below your feet. The air is so rare that the "drag" of altitude is very noticeable, and you suddenly realize how earthbound we really are. Few persons, however, feel any ill effects as a result of the tremendous height.

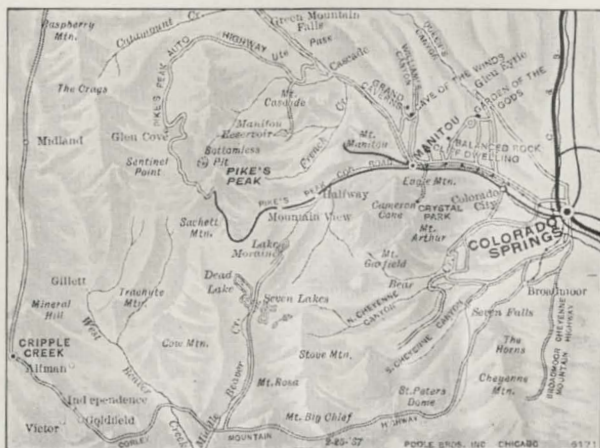
While not a metropolitan city

(33,200 people), Colorado Springs is admirably endowed for the role of host to vacationing thousands. Its fine modern hotels, wonderful system of parks, numerous excellent highways and splendid rail service, dovetail with any recreation plan. Trails abound, piercing canyons, forest, park and quiet glen, ascending ridges and mesas, following foaming streams and cascades, up to the jagged mountain crests. And all this within a radius of some twenty miles, almost every section of which is amazingly accessible.

Besides the breath-taking Pikes Peak highway, many other world famous motor roads serve the region. There is the spectacular new Broadmoor-Cheyenne Mountain Highway, zigzagging up a 9500 foot mountain that rises abruptly from the plain. The Corley Mountain Highway, built over the road bed of the old Cripple Creek Short Line, is a thrilling route, through tunnels, over trestles, along forested canyons and circling towering peaks, to Cripple Creek's gold camps.

Especially popular is the road through the gigantic Pillars of Hercules that stand guard before the granite walls of South Cheyenne Canyon where the Seven Falls spill down a steep precipice. Here one may bow to tradition and be

Map of the Colorado Springs-Pikes Peak region.



photographed on a burro, or "Rocky Mountain Canary," as our parents did many years ago. In the lovely canyon above the falls is the grave of Helen Hunt Jackson.

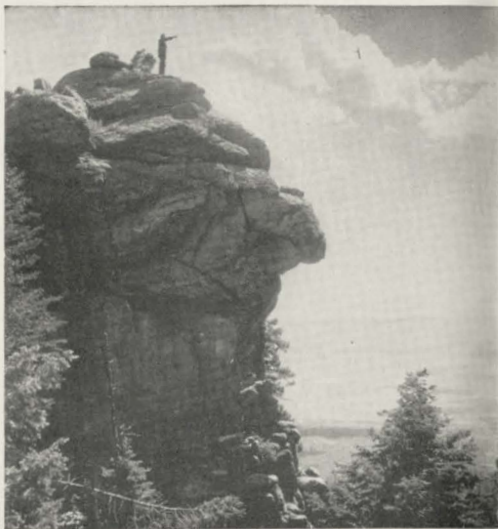
Manitou, just six miles west of Colorado Springs, is famous for its mineral waters, fine baths and surrounding scenery. The city lies in a cleft of the mountains at an altitude of 6335 feet, overshadowed by Mt. Manitou at its very edge. Legend has it that hostile Indian tribes "buried the hatchet" when they came here to bathe in the healing waters of the mineral springs. There are some 15 medicinal springs within the city limits, visited by thousands every year.

Just a few miles distant are numerous beauty spots of the Pikes Peak region. In no time at all one can visit Garden of the Gods, Williams Canyon and Cave of the Winds, Rainbow Falls, Phantom Cliff Canyon and ancient cliff dwellings; ascend Mt. Manitou by cog railway; or motor over historic Ute Pass, once trod by Indians bound for their summer hunting grounds. Many delightful resorts are in the pass, including Cascade, Chipita Falls, Green Mountain Falls and Florissant.

Only twenty miles southwest of Colorado Springs is the fabulous Cripple Creek district, whose gold mines have yielded great fortunes in the yellow metal. Even today, many a train of ore-laden cars emerges from Cripple Creek and nearby Victor, and rich rewards of gold bullion are made possible by modern and efficient mining methods.



*A lovely vista on the highway that leads into North Cheyenne Canyon.*



*"The end of the road" . . . at the summit of the Broadmoor-Cheyenne Mountain Highway.*

---

*A glorious view at the summit of Pikes Peak . . . brilliant sunshine, and snowbanks above the clouds.*





# BOULDER-GLACIER REGION

Twenty-nine miles northwest of Denver lies Boulder, key city to the great glacier region in the Roosevelt National Forest south of Rocky Mountain National Park, and eminent among Colorado's alluring resort cities. This beauty spot at the mouth of lovely Boulder Canyon is the seat of the State University, the Colorado Sanitarium, the noted Blue Bird enterprise, and (in July and August) the famed Colorado Chautauqua. Some 15,000 fortunate people live here the year 'round, their numbers swelled greatly each summer by hosts of outdoors-eager vacationists from states where glorious mountains do not rise majestically from one's very doorstep.

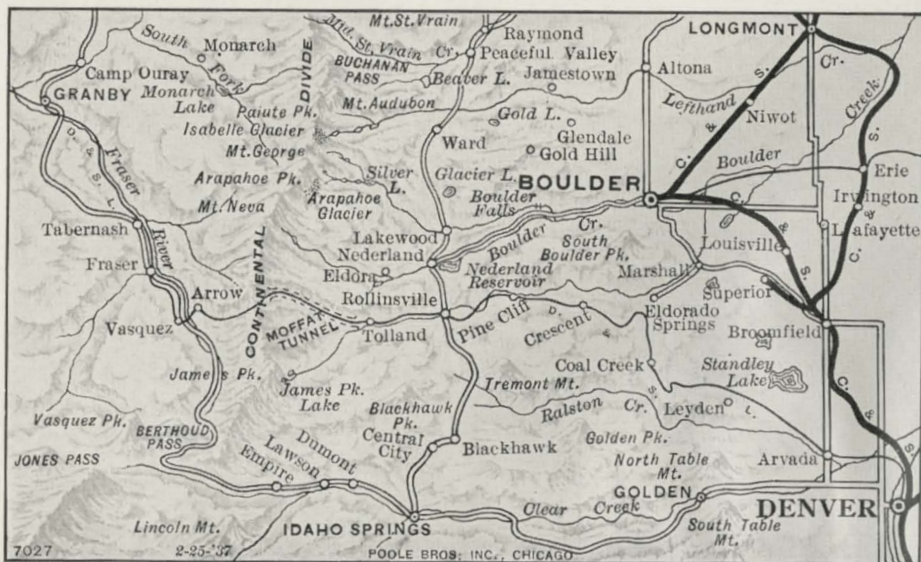
This mountain-locked city at the foot of the Arapahoe Peaks has 6000 acres of mountain park and is the entry to a perfect labyrinth of all that makes a vacation in the mountains worth while. Close at hand are rugged ranges, glacial lakes and streams, hundreds of square miles of virgin forest, a wonderland of canyons, plunging cataracts, lakes and frowning crags. A network of motor

roads traverses the entire region, making it easy to reach seemingly inaccessible heights and scores of attractive alpine resorts.

There are many such charming havens of rest, inviting one and all to spend a week, a month, or all summer in a cool green forest-and-mountain world. Crisp nights and long deep slumber combine with sunny days in the open air to provide a remedy for any ailment, mental or physical. One can stroll through meadow and flowers; penetrate the endless forest on horseback, up to majestic heights; and continue on foot up among the embattled peaks to where the eternal glaciers 'grow.'

Here are the famous Colorado Glaciers, greatest in the state . . . gigantic, living, moving ice fields high up under the foreboding crags that straddle the Continental Divide—12,000, 13,000, 14,000 feet above sea level. These mysterious phenomena, among the most fascinating in Nature, start up in regions of perpetual snow and are the source of countless streams that tumble

Map of the Boulder-Glacier Region.



to the valleys far below, forming sparkling lakes on the way and eventually finding a path to the sea.

These living glaciers . . . Arapahoe, St. Vrain, Isabel and Fair . . . are the most accessible in the world. To study them from close at hand is an unforgettable experience, giving one a deeper insight into the mighty scheme of the universe. On every hand, there are scenes to stagger the imagination . . . enormous cirques, great rock moraines, pressure folds, yawning crevasses, visible ice strains, and perhaps strangest of all, "red snow."

St. Vrain Glacier, lying on the very ridgeline of America at 12,500 feet, is 500 feet thick and nearly two miles long. Its ice was forming long before Columbus discovered America. Fair Glacier, still higher up, clings almost vertically to the great Divide above the forbidding Hell Hole. Arapahoe, perhaps the best known, is the largest living glacier in the Colorado Rockies.

Boulder has the distinction of being the only city in the United States, if not in the world, that owns its own glacier—Arapahoe, source of the city's water supply. Its purchase by Boulder was authorized in 1919 by a special Act of Congress to insure for the city a constant, pure supply of water direct from the glacial snow and ice. Arapa-

hoe Glacier is nearly a mile square and from 100 to 500 feet thick. It flows, as it has for hundreds of years, at the rate of from 11 to 27 feet per year by actual measurement.

The University of Colorado has erected a "Science Lodge" only a few miles from this great ice field, whose study is included in geological and botanical courses conducted during the regular Summer School.

Another feature of the university's summer sessions is the summer Writers' Conference, held annually since 1930 under auspices of the university. The purpose of the Conference, the most comprehensive organization of its kind in the country, is to stimulate creative writing in an inspirational atmosphere under leadership of many famous authors.

Just a short distance from Boulder are a number of Colorado's old "ghost" towns which figured so vividly in early gold mining activities. Central City, Black Hawk, Nevadaville . . . these were names to conjure with, back in the roaring '60's, when fabulous stories of rich "strikes" brought forth a wave of gold-mad humanity who sought fame and fortune with pick and shovel, gold pan and sluice box.

They swarmed the gulches, valleys and streams, scarred the surrounding

*Mountain-edged Boulder, "gateway to the glaciers."*

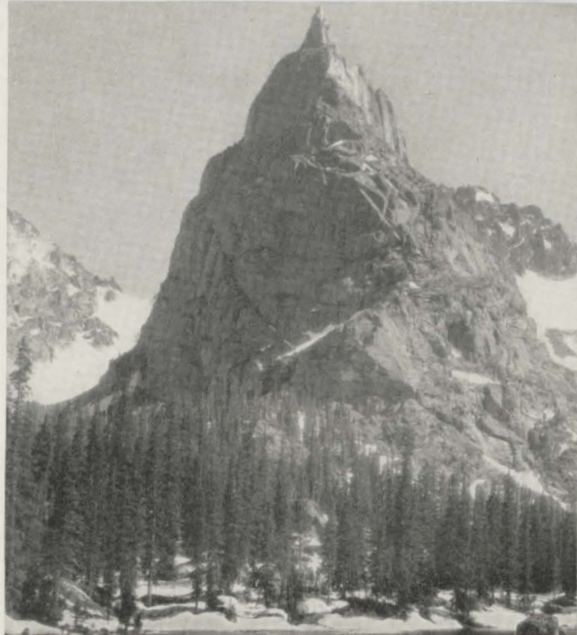




*The lofty spire of Lindbergh Peak,<sup>1</sup> a prominent point on the great Divide.*

mountains, and lived lustily amid the frenzied gaiety of the famous "boom" towns of the day. From the rich ore veins all about a golden flood poured forth, and Central City, with its twin city, Black Hawk, was the center of it all. By 1874, however, the amazing streams of gold had begun to peter out, leaving in their wake deserted cities of memories . . . lonely, virtually lifeless "ghost" towns.

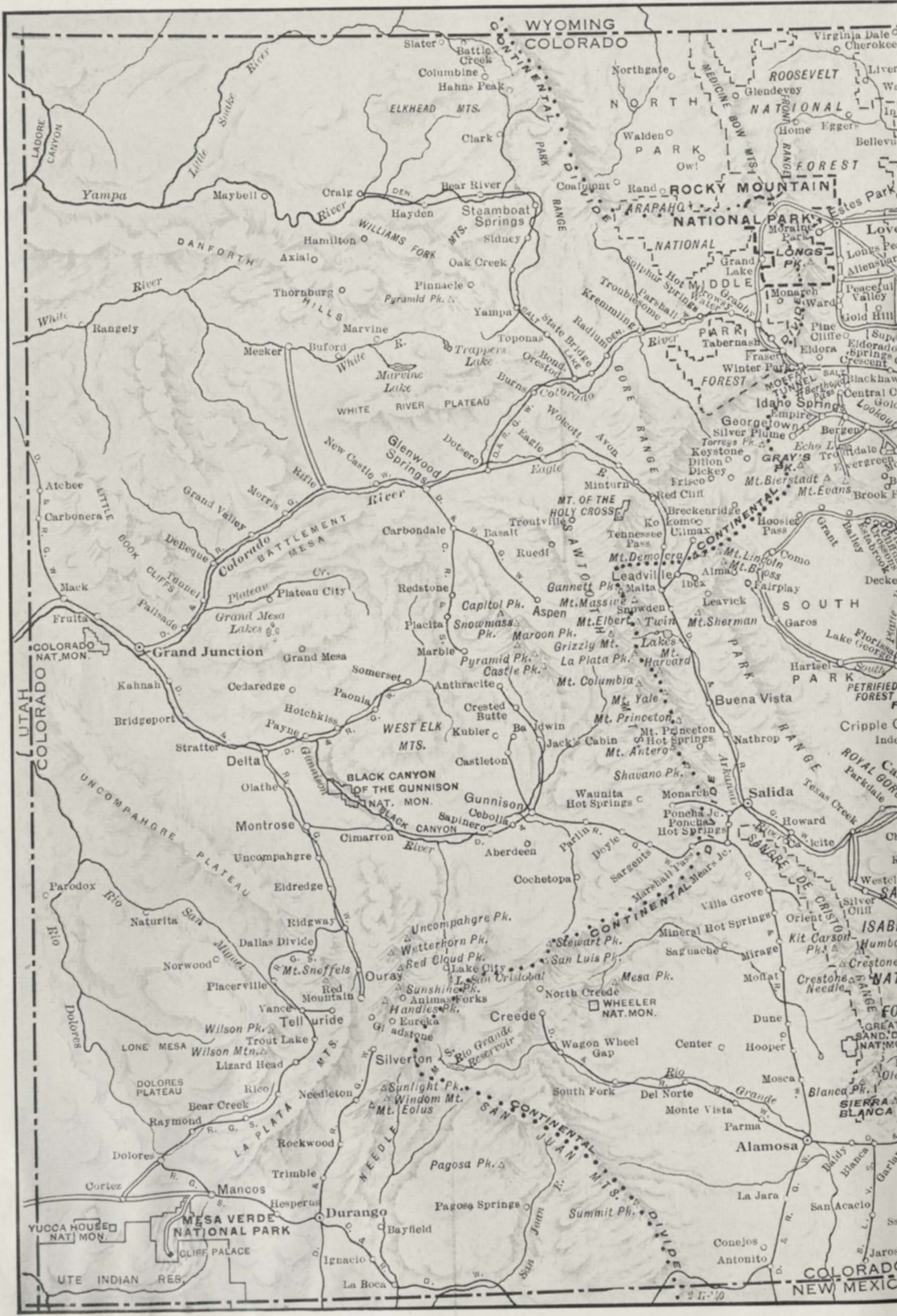
One of the few buildings left intact in Central City was the Grand Opera House, where Booth, Bernhardt, Patti, Salvini, Joseph Jefferson and other stage immortals once played. Turned over to the University of Denver as an unusual historic museum, the old Opera House was never reopened until 1932, when the Annual Play Festival was inaugurated to commemorate glories of bygone days. This unique event, usually held in July and featuring the finest actors and actresses of today, brings back the glamour of those forgotten times and attracts visitors from all over the country.



Boulder, the "gateway to the glaciers," is a regular destination for summer tourist tickets routed via the Burlington to Denver, thence Colorado & Southern Ry. Tickets so routed will be honored, if desired, on Denver & Interurban Motor Coaches between the two cities. The round-trip summer excursion fare to Boulder from any point in the East is the same as to Denver.



*The vast expanse of Arapahoe Glacier, the only city-owned glacier in the world, dwarfs a party of intrepid explorers.*



WYOMING  
COLORADO

ROOSEVELT  
NATIONAL  
FOREST

ARAPAHO  
NATIONAL PARK

LONGS  
PK.

WINTER  
FOREST

GRAY'S  
TR.

MT. BIERSTADT

MT. EVANS

MT. CROSSLAND

MT. LINCOLN

MT. CROSSLAND

MT. CROSSLAND

MT. CROSSLAND

MT. CROSSLAND

MT. CROSSLAND

MT. CROSSLAND

MT. CROSSLAND

MT. CROSSLAND

MT. CROSSLAND

MT. CROSSLAND

MT. CROSSLAND

MT. CROSSLAND

MT. CROSSLAND

MT. CROSSLAND

MT. CROSSLAND

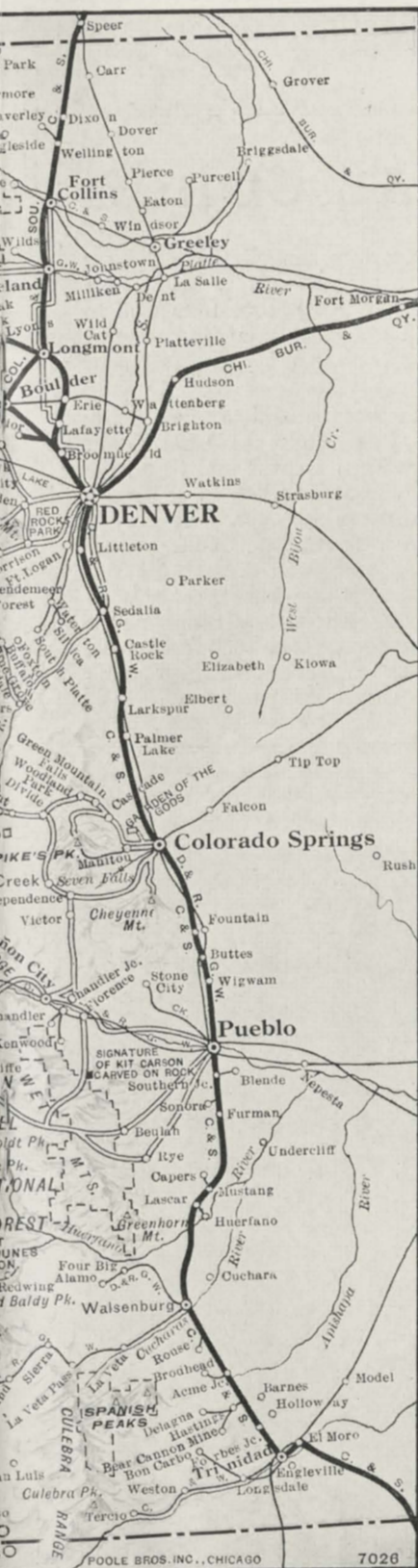
MT. CROSSLAND

MT. CROSSLAND

MT. CROSSLAND

COLORADO  
NEW MEXICO





•

# MAP

of the

# COLORADO VACATION REGIONS

•

•

Served by the BURLINGTON

•

# PUEBLO and ROYAL GORGE

Pueblo, third of Colorado's great gateways for visitors from the east, is situated on the Arkansas River at the foot of the Rockies, 45 miles south of Colorado Springs. Second largest city in the state, it earns its title of "The Pittsburgh of the West" by reason of its being the center of the West's smelting and steel industries.

Pueblo is a modern city, with a population of over 50,000, good hotels, several hundred acres of mountain parks, and large mineral spring baths in the center of the city. While not a resort city in itself, a number of well-patronized summer vacation spots lie within easy distance. It is also the main starting point for excursions to such renowned playgrounds and scenic wonders as San Isabel National Forest, Canon City and Royal Gorge, the Sangre de Christo and Spanish Peaks, and Great Sand Dunes National Monument, as well as Mesa Verde and other wonderful regions in Western Colorado.

Less than 35 miles from Pueblo are two fine resort sections close to the mountains—Beulah and Rye. The former lies in a lovely fertile valley with mineral springs, forested canyons, and many shady drives and mountain trails. Rye is a charming village on the Greenhorn River, surrounded by magnificent scenery. Some of the finest fishing in the state is in this section.

Only 30 miles west of Pueblo is Canon City, the center of a splendid variety of mineral springs noted for their healing qualities, including a mammoth swimming pool. Close by is the famous Royal Gorge.

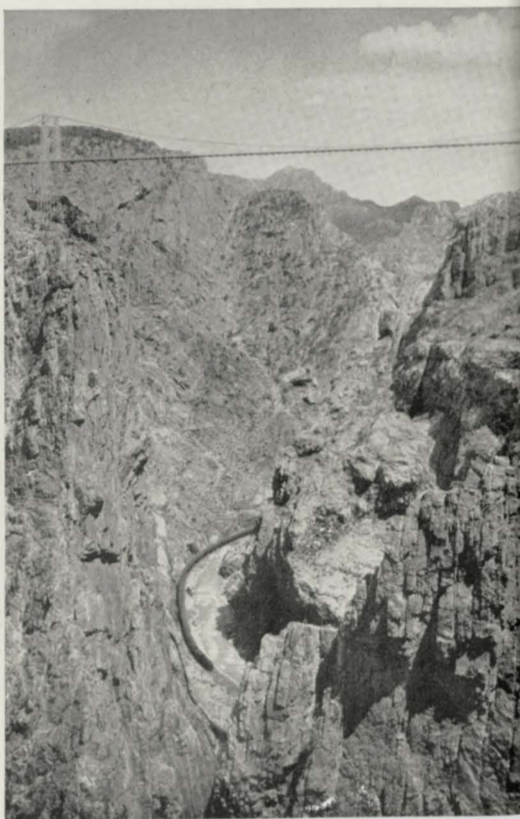
The Royal Gorge, a superb masterpiece of Nature, represents one of the boldest, thrilling epics in Western rail history. Imagine a stupendous canyon

2,000 feet deep, ten miles long and, for the most part, so narrow that almost anyone can toss a stone from wall to wall. Through this mighty crevasse races its restless maker, the turbulent Arkansas River.

At the bottom of the canyon is the "Royal Gorge" line of the D. & R.G.W. R.R. between Denver and Salt Lake City, an important link in the route of Burlington through sleepers to California. Construction of the granite-bound steel highway through the canyon is one of the world's great railroad engineering marvels. At one point, where the gorge is only 30 feet across, the tracks run over the famous Hanging Bridge, suspended parallel with the

---

*A toy-like transcontinental train winds its way through the grim walls of the Royal Gorge, topped by a breath-taking highway bridge.*





rushing river by immense steel supports set in the solid rock walls.

From Canon City one can motor out over a breath-taking new Suspension Bridge that swings across the gorge 2,056 feet above the river. This colossal structure is 880 feet long and over twice the height of any other suspension bridge in the world. From its eerie height there is a superb view of the Rockies for a hundred miles north and south, as well as of the gorge itself, where seemingly toy trains wind their way between the precipitous walls.

#### *San Isabel National Forest*

Facilities for vacation enjoyment are unsurpassed amid the half million acres of the great San Isabel National Forest. Through the eastern section of this beautiful area run the Wet Mountains, while the enormous Western section, paralleling the fertile San Luis Valley for nearly 150 miles, contains the glorious Sangre de Cristo Range and, close to the border line of New Mexico, the historic Spanish Peaks. In this mighty expanse are some of the highest peaks in all Colorado.

Here are unscaled heights, unexplored caves, bottomless pits, wilderness unparalleled, mirror-like lakes,



*The Beulah-Rye road in the heart of San Isabel National Forest.*

great canyons and hundreds of square miles of marvelous virgin forest. Trout streams abound, restocked yearly by federal and state fish hatcheries. There are over 700 miles of well-marked auto roads and countless winding trails, thus affording easy access to the region and to numerous inviting hotels, resorts and ranches on the fringe of the forest. This vast, virtually untouched playground is free to everyone, and is constantly patrolled by the U. S. Forest Service.

The greatest (and almost the only) restriction on anyone's freedom in San Isabel, as well as in all our national forests, is the insistence that camp fires be completely extinguished before they are abandoned, and that every precaution be taken against forest fires.



*Marble Mountain in the lovely expanse of San Isabel National Forest.*

# MESA VERDE and WESTERN

One of the strangest of Colorado's many scenic rarities is Mesa Verde National Park, where the most beautiful, impressive and best preserved of all American prehistoric ruins are located. The park includes some 50,000 acres of remarkable loveliness tucked away in the far Southwestern corner of the state, easily reached by motor roads and perpetuated for all time by the federal government.

Mesa Verde is a fascinating place, a veritable island of mystery and enchantment that challenges the imagination. Carved from the sheer cliffs of some twenty-six wild canyons that gouge its surface are the amazing cliff dwellings of a long lost people. Who they were, whence they came, where they went and why . . . no one knows to this day. They simply disappeared, utterly and mysteriously.

Stand on the edge of the great Emerald Table 2000 feet above the floor of the great Montezuma Valley, realizing why this is called Mesa Verde . . . "Green Table." Climb among the cliff houses, such as Spruce Tree House and the marvelous Cliff Palace. Explore rocky paths, secret passages, strange ceremonial chambers and well-formed streets that echoed to thousands of feet about the time Richard I was

leading his Crusaders into the Holy Land.

During the park season, May 15 to September 15, regular motor bus service is operated to Mesa Verde from Grand Junction, Montrose, and Durango on the D. & R.G.W.R.R. The park trip may be purchased separately or as a three-day all-expense tour or side trip from either of these points, by being included in your summer tourist rail ticket at the time of purchase. Such a tour includes motor transportation each way from the rail point, and meals and lodging in the park at Spruce Tree Lodge.

Mesa Verde, however, is only one of the many glorious attractions of Western Colorado. Here is a gargantuan playground that has practically *everything* in the way of outdoor allurements. All is on a grand and glorious scale . . . all seems calculated to make Man realize the vastness of Nature's works, and to give him breadth and wisdom through overwhelming perspective. In Western parlance, "the sky's the limit" to your enjoyment.

There is marvelous fishing along such famous streams as the Gunnison River, the Rio Grande (the same Rio Grande that flows to Old Mexico), the San Miguel, Yampa and Colorado Rivers, and many well-stocked lakes. Lovers of the unusual will revel in the monstrous and grotesque geological phenomena of the Wheeler and Colorado National Monuments.

Mineral springs abound in many sections, with splendid facilities for enjoying them . . . as at luxurious Glenwood Springs, on the Colorado River, where a feature is a huge outdoor swimming pool of hot mineral water.



*The Balcony House, one of the best preserved relics of the Mesa Verde cliff dwellers.*



---

# COLORADO

---



*Deep in the San Juan Mountains.*



Other popular radioactive springs are located at Pagosa, Ouray, Waunita, Salida, Leadville and Buena Vista.

The largest flat topped mountain in the world, rising a mile above the surrounding country, is in Western Colorado . . . renowned Grand Mesa, with some 360 trout-filled emerald lakes, grand views and boundless forests. Tremendous areas of federal-protected national forests stretch almost continuously from the Wyoming border to the New Mexico line . . . Rio Grande National Forest, Montezuma, Uncompahgre, Grand Mesa, Gunnison, Cochetopa, White River, Holy Cross, Pike and Routt. These areas alone comprise nearly nine million acres of rare (and free) recreational charm.

There is no lack of mountain grandeur, for all along the Continental Divide are such great ranges as the Rabbit Ear, Park, San Juan, La Platte, the Sawatch group, Cochetopa Hills, and the San Miguel Mountains. In the Sawatch group are the three highest peaks in the state . . . Mt. Elbert (14,420 feet), Mt. Massive (14,404 feet), and Mt. Harvard (14,399 feet). Close by is historic Leadville, the world's highest incorporated city.

Throughout this stupendous vacationland are hundreds of excellent places that cater to lovers of the great outdoors. They offer—according to location, altitude, accommodations and featured activities—a summer “bill of fare” that will appeal to anyone.

---

*Left—Autumn glory on Electra Lake, near Durango, Western Colorado.*

*Below—Trappers Lake, White River National Forest, a famous fishing spot.*



# DUDE and GUEST RANCHES

In many of the mountain lands of the West, one finds that typically (and solely) American institution, the Dude or Guest Ranch—and Colorado has a goodly quota of such fascinating places. Scattered through the mountain regions along the fringes of deep, primeval forests, or basking in the sunlight streaming down upon many a grass-carpeted valley—ideal surroundings for an outdoors vacation—here the dude and guest ranch thrives.

By the way, let it be said right here that the term “dude” is not used disparagingly. It is simply the western way of referring to any visitor or guest from “back East” . . . which means almost anywhere east of the cattle country. Women dudes, if you please, are sometimes called, picturesquely, “dudines.”

These ranches are indigenous to no one part of the state. They can be found in general where the old stock men, the men who built the West, came upon good grazing and water lands. All, however, are alike in certain respects . . . all offer true Western hospitality, and a particularly enviable and enjoyable type of outdoor life.

Many are true ranches in the real Western meaning—operating ranches



where cattle are raised, “worked” and marketed as a business, and where the guest may know the fascinating experience of riding the range with the

“wranglers,” participating (in a mild way) in the day’s activities of cutting out, roping, roundups, branding, etc.

Other ranches cater more specifically to a strictly summer clientele, with their personnel and activities directed toward the comfort, interest and stimulation of the vacationist. No matter which type of establishment appeals to you, there is inspiration for the weary and the mentally jaded in the soul-stirring solitudes, pure crystalline air and vigorous, healthy outdoor sport wherever you go.

No “dress up” places are these dude ranches . . . you can dress just about as informally as you please. Extensive outfits are unnecessary, since you can purchase what you need on arrival in Colorado.

Here the Horse reigns supreme, for the dude ranch represents the world of boots, saddle leather and ten gallon hats. Here the cowboy is in his element and if you would make the most of your opportunities you will ride with him through a wilderness world that you might otherwise never see. Where he goes, there are trails but no roads. With a good horse between your knees and vast miles of wonderful riding country all about, every day becomes a glorious new experience.

The average Colorado dude and guest ranch is not a large and spacious establishment as to accommodations and service. Their very compactness is

---

*A high spot in Colorado dude ranch life . . . saddling up in the corral before the daily ride.*







*Typical Colorado dude ranch country . . . broad rolling valleys, sparkling streams, and majestic mountains in the background.*

one of their chief charms, for here you are more an individual than a guest and the friendly portals of the Great West are opened for you as they would be in no other region of the country. Yes, a ranch vacation is a *different* vacation—one that offers something new and delightful from anything you may ever have known before.

In selecting a ranch, it is suggested that prospective "dudes" should correspond personally with ranchers for more detailed information than it has been possible to include in the list shown on pages 41 and 42 of this booklet. Reservations usually are made in advance so that arrangements can be made to have the ranch car meet one's train.

Colorado dude ranch rates include lodging, meals, entertainment, guides for ordinary short trips, and in many cases the use and care of a private saddle horse also. As a rule, rates are materially reduced for the late Fall months during the hunting season, and during the months when winter sports are offered at ranches open all year.



*It's great fun to watch the cowboys on a real western cattle ranch.*



*A picnic out in the open, amid the scented pines . . . with the "wranglers" doing the chores.*



*A group of happy boys at a Colorado mountain camp.*

## BOYS' and GIRLS' CAMPS

Colorado is famous for its great number and variety of summer camps for boys and girls, offering a wide range of accommodations, activities and charming locations. Some of these camps are quite small, with personal supervision stressed above all else and offering a truly delightful atmosphere of Western home hospitality. Some employ complete professional staffs of instructors and advisors, with extensive facilities for the training of youth from six to twenty-one years of age. Other camps are operated in conjunction with real

cattle ranches, with the attendant thrills of "range riding," roping, round-ups and similar fascinating ranch lore.

Colorado's famous summer camps are not confined to any one locality or region . . . you will find them in many sections of the state, although always within sight and easy riding distance of the mountains. The majority are located in and around Rocky Mountain National Park on both sides of the Continental Divide, and in the Boulder-Glacier and the Colorado Springs-Pikes Peak districts, with a few in the western part of the state. While the camps vary considerably in their summer programs, range of outdoor activities and accommodations, all are alike in several outstanding respects.

These camps teach self-reliance under understanding leadership and enable the boy or girl to develop initiative, resourcefulness, love of natural beauty, and that spirit of comradeship and cooperation so essential to modern social life. Above all, they offer wonderful



*Ride 'em Cowboy! What a thrill to see a real Western rodeo in action.*

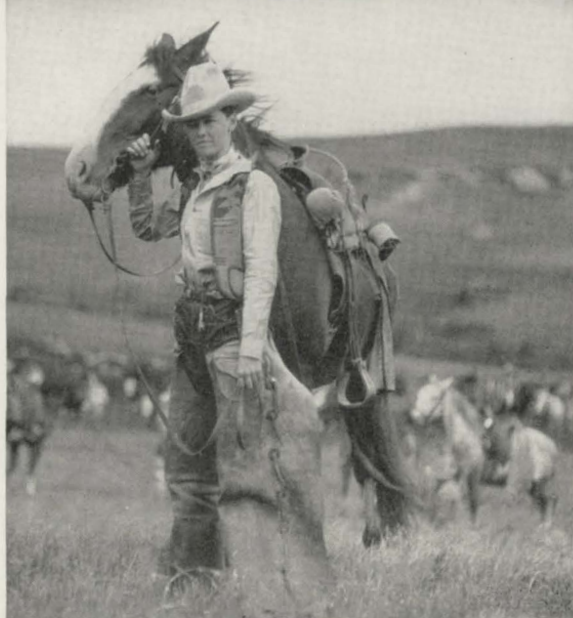


opportunities for a grand vacation among Colorado's vast mountain grandeur. Indeed, no more splendid vacation could be imagined for a growing boy or girl than a summer at some well-supervised Colorado camp. Health, happiness and clean alert minds are the almost inevitable results, coming during the most formative years when they will do the most permanent good.

Every day is a new and rapturous experience for the growing youngsters. Practically every camp maintains a string of thoroughly dependable riding horses, for riding is the almost-universal sport in Colorado. Horseback trips are daily occurrences, under careful instruction and constant supervision. Beginners have no difficulty in learning to ride in the free and easy Western style, once learned never forgotten.

Some camps feature a maximum of outdoor life, with overnight camping and pack trips and even short visits to real western rodeos nearby. A few camps for boys are located on real cattle ranches, where the boys enjoy the thrill of riding with the cowboys at their daily range tasks.

Boys and girls usually are segregated as to age so that desirable companionships may be formed. At other places, tutoring can be arranged throughout the summer, and personal supervision (while seldom necessary) can also be provided under capable, mature guidance. In general, however the programs of activities are not dictated by strict, rigid methods of regu-



*Put your growing youngster in the place of this Colorado camper. Don't you think it would do him a world of good?*

lation but are calculated to develop the best in growing youths, while giving them the priceless advantages of life in the great outdoors.

Before selecting a camp where your boy or girl will spend all or part of the summer vacation period, references may be asked of any Colorado camp listed on pages 43-44 in this booklet, and freely investigated for your own satisfaction as to its complete reliability. Many establishments have non-resident representation in larger cities of the Midwest and East so that dependable information may be available all year 'round.

*A riding class at one of the better known Colorado camps for girls . . . trained riders, every one.*





Above—Baldpate Inn, Rocky Mountain National Park.

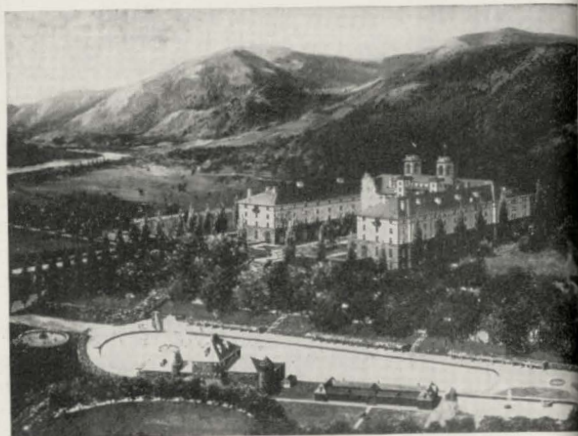
A few of the buildings of the Y.M.C.A. Conference, annually held in Estes Park.



Left—Guests of Elkhorn Lodge, Estes Park, ready for an exhilarating morning ride.



Above—Mountain-flanked Estes Park Chalets, Rocky Mountain National Park.



Above—The luxurious Hotel Colorado, Glenwood Springs, with a big outdoor swimming pool as an extra attraction.

## TYPICAL SUMMER VACATION PLACES IN COLORADO

The question of "where to go" in Colorado depends entirely on your taste in summer recreations. Throughout the state, you will find a host of hotels, lodges and cottage resorts catering solely to your pleasure and comfort. They range all the way from modest cabin camps, rustic furnished cottages and intimate little resorts with limited capacity, to luxurious hotels where the service is the equal of any metropolitan standard. You can select from a number of splendid camps for your growing boy or girl, and the dude or guest ranch is well represented too.

For your convenience, the Burlington has prepared an extensive list of Colorado Hotels, Resorts, Boys and Girls Camps, and Dude Ranches. This list will be found on pages 40 to 50, inclusive, in this booklet.



Typical informal atmosphere of a first-class Colorado resort, with the inviting open fireplace for cool evenings in the mountains.



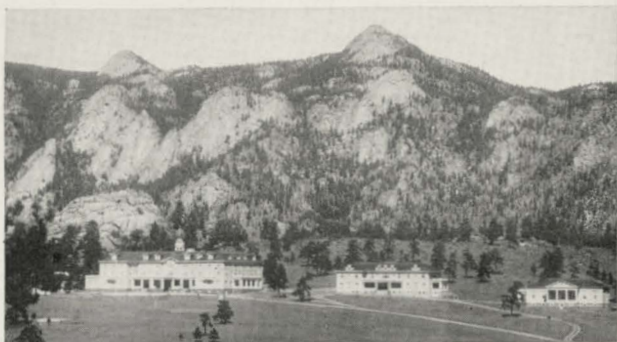
The famed Broadmoor Hotel at Colorado Springs, one of the best known and most complete hotels in the west.



Above—Lewiston Hotel, overlooking the pleasant valley of Estes Park.

Right—An outstanding hotel of the Rocky Mountain National Park region . . . The Stanley.

Below—Brook Forest Inn, near Evergreen in the heart of the Denver Mountain Parks.



Right—Troutdale-in-the-Pines, a well known vacation place in the Denver Mountain Parks.



Below—Comfortable furnished cabins are available on the shores of many a wilderness lake.

Below—A peaceful summer resort in the popular vacation region of Platte River Canyon.



Above—The Craggs, atop a bold bluff gazing out over Estes Park and surrounding mountains.

# Hotels and Resorts of Colorado

## ROCKY MOUNTAIN NATIONAL (Estes) PARK REGION

Name	Manager	P. O. Address (Colorado)	Capacity	RATES (American Plan)	
				Per Day	Per Week
Baldpate Inn	Gordon Mace	Estes Park	60	\$4.50-7.50	\$28.00-45.00
Bear Lake Lodge	E. B. Bishop	Estes Park	75	\$4.25-6.00	\$26.50-38.50
The Brinwood	C. L. Reed and Sons	Estes Park	75	\$3.65-6.50	\$22.05-42.00
Columbine Lodge	C. H. Alexander	Estes Park	80	\$4.50-6.00	\$22.50-35.00
Corner Cupboard Inn	H. W. Rhone	Grand Lake	200	\$3.00-6.00	Rates on app.
The Crags	Mrs. Joe Mills	Estes Park	200	\$4.00-7.00	\$28.00-45.00
Crystal Springs Lodge	Mrs. W. Morgan	Allen's Park	30	Rates on app.	Rates on app.
Elkhorn Lodge	Carl Rohr	Estes Park	225	\$4.50-8.50	\$28.00-50.00
Estes Park Chalet-Ranch	Rocky Mtn. Motor Co.	Estes Park	300	\$6.00-8.00	Rates on app.
Fall River Lodge	Mrs. M. E. March—Service	Estes Park	125	\$5.00 up	\$25.00 up
Fern Lake Lodge	Mrs. W. F. Kuykendall	Estes Park	50	\$3.50-5.00	\$22.00-31.50
Forest Inn	Frank D. Tecker	Estes Park	50	\$3.00-6.00	\$17.50-35.00
Grand Lake Lodge	Rocky Mtn. Motor Co.	Grand Lake	300	\$6.00-8.00	.....
Hewes-Kirkwood Inn	Chas. Hewes	Allen's Park	50	\$3.00-4.00	\$17.00-21.00
Hupp Hotel	Anna M. Derby	Estes Park	60	.....	\$17.50-25.00
Kauffman House	Mrs. Belle Kauffman	Grand Lake	40	\$3.00	Rates on app.
Lehman Hotel	.....	Grand Lake	100	\$3.00 up	.....
Lewiston Hotel	J. R. McKelvey	Estes Park	100	\$4.50 up	Rates on app.
Longs Peak Inn	Mrs. Enos Mills	Estes Park	150	\$4.50-10.00	\$28.00-65.00
National Park Hotel	Mrs. H. R. Byerly	Estes Park	80	(E) \$1.50-4.50	(E) \$9.00-27.00
Olympus Heights	F. A. Whitney	Estes Park	120	\$2.75-3.00	Rates on app.
Pines Hotel	.....	Grand Lake	30	(E) \$1.50 up	.....
Prospect Inn	Mrs. S. M. Spanier	Estes Park	50	\$3.00 up	\$20.00-30.00
Rapids Hotel	W. R. Supernauth	Grand Lake	50	\$3.50 up	\$25.00-35.00
Riverside Hotel	Ted Jelsma	Estes Park	30	(E) \$1.25-1.50	Rates on app.
Sherwood Hotel	V. A. Van Horn	Estes Park	50	(E) \$2.00 up	Rates on app.
Sprague's Lodge	E. M. Stopher	Estes Park	100	\$4.00-6.00	\$24.50-40.00
Stanley Hotel	Rocky Mtn. Motor Co.	Estes Park	300	\$6.00 up	.....
Stapp's Lakes Lodge	John & Bill Stapp	Ward	50	\$4.00-5.00	\$25.00-30.00
Stead's Guest Ranch	W. G. Lewis	Estes Park	300	\$3.50 up	\$22.50-23.00
The Tavern	H. W. Rhone	Grand Lake	200	\$3.00-6.00	Rates on app.
Wild Basin Lodge	S. C. Spencer	Allen's Park	100	\$3.50 up	\$28-42
Wind River Ranch	W. C. Booth	Estes Park	25	.....	\$35.00-40.00
Windvale Ranch	J. A. & J. C. Atchison	Estes Park	12	Rates on app.	Rates on app.
Y.M.C.A. Conference	A. L. Mayer	Association Camp	600	Rates on app.	Rates on app.
Zicks Hotel	Mrs. John Zick	Grand Lake	75	(E) \$1.00-2.50	(A) \$18.00 up

## DENVER HOTELS

Hotel	Capacity, Rooms	Minimum Daily Rates		Hotel	Capacity, Rooms	Minimum Daily Rates	
		Without Bath	With Bath			Without Bath	With Bath
Adams	100	\$1.50-2.00	\$2.50-4.00	Lancaster	80	1.50 up	2.50- 4.00
Albany	330	2.00	2.00- 6.00	Mayflower	80	1.50- 2.00	2.50- 3.00
Ambassador	100	1.50- 2.00	2.00- 3.00	Midland	70	1.00- 2.50	1.50- 3.50
Argonaut	140	1.50- 2.50	2.50- 4.00	Mills	60	1.00- 2.00	2.00- 3.00
Auditorium	200	1.25 up	2.00 up	Newhouse	75	1.00- 2.00	1.50- 3.00
Ayres	60	1.00 up	2.00 up	Olin	175	.....	3.00- 6.00 (single) 3.00- 6.00 (double)
Brown Palace	325 (60 Apts.)	.....	3.50- 6.00 (single) 10.00-16.00 (double)	O'Neill	60	.....	1.50- 2.50
Colburn	102	.....	2.50- 4.00	Oxford	250	1.50- 2.00	2.00- 3.50
Colorado	100	1.25- 2.00	2.00-3.00	Park Lane	200	.....	4.00 up
Cory	100	1.50	2.50 up	Plaza	60	1.00- 1.50	2.50- 4.00
Cosmopolitan	460	2.00	3.00- 5.00	St. Francis	60	1.00 up	1.50 up
Crest	114	1.25 up	2.00 up	Sears	100	1.50- 2.00	2.00- 4.00
DeSoto	75	1.25- 2.00	2.00 up	Shirley-Savoy	400	1.75- 3.00	2.50- 6.00
Dover	80	1.00- 1.75	1.50- 3.00	Standish	150	1.25 up	2.00 up
Eleventh Avenue	96	1.00- 2.00	1.75- 3.50	Tours	60	1.00- 1.50	2.00 up
Erhard	60	1.00- 1.50	1.50- 2.00	Wellington	75	1.50- 2.00	2.50- 3.50
Hall	70 (100 Apts.)	1.25- 1.75	2.00- 2.50	West	125	1.00- 1.50	1.50- 3.00
New Kenmark	120	1.25- 2.00	2.00- 3.00	West Court	130	1.00- 2.00	2.00- 3.50
				Wynne	100	1.00- 1.50	2.00- 3.00

## COLORADO SPRINGS HOTELS

(see also under Manitou, general hotel list)

Hotel	Capacity, Rooms	Minimum Daily Rates		Hotel	Capacity, Rooms	Minimum Daily Rates	
		Without Bath	With Bath			Without Bath	With Bath
Acacia	150	\$1.50-2.00	\$3.50-5.00	Cheyenne	40	1.50-2.00	2.00-3.00
Alamo	200	.....	2.00 up	Broadmoor	300	4(S), 5(D) up	5(S), 8(D) up
Albany	60	1.50 up	2.00 up	Joyce	75	1.50-2.50	2.50-4.00
Alta Vista	150	1.50-2.00	2.00-3.00	Plaza	125	1.50-2.00	2.50-4.00
Antlers	350	.....	5.00-7.00	Rex	50	1.50-2.00	2.00-3.00
Arrow	50	1.00-1.50	1.50-2.50				



## DUDE and GUEST RANCHES

Name	Manager	P. O. Address (Colorado)	Capacity	RATES (American Plan) Per Day	Per Week	Other Information
Arrowhead Ranch	G. B. Young	Norwood	20	.....	\$35.00 up	Alt. 8200—cattle ranch in Western Colorado, near Uncompahgre Natl. Forest—cabins; 2-week pack trip, fishing, hunting. Rates include horses. Family rates.
*Bridle Bit Guest Ranch	Glenn S. Wagner	Larkspur (Palmer Lake)	25	.....	\$45.00	Cattle and horse ranch in Pikes Peak region, open all year—lodge, cabins; pack trips, fishing, swimming and tennis nearby. Rates include horses. Family and season rates. P. O. Palmer Lake.
Diamond G. Ranch	Al Sanders	Ruedi	50	.....	\$30.00	Alt. 8000—Guest Ranch in Central Colorado—lodge, cabins; horses, fishing, pack trips, mountain climbing.
Double V Ranch	S. S. Rudnick	Westcliffe	45	\$5.00 up	\$35.00	Alt. 7880—adj. Sangre de Christo Range, San Isabel Natl. Forest—ranch house, cabins, swimming, fishing, "little theatre." Rates include horses.
*Drowsy Water Ranch	Deane Glessner	Hot Sulphur Springs	35	.....	\$40.00	Alt. 8300—cattle ranch—lodge, cabins, with bath—registered horses, fishing, pack trips, hot sulphur springs and swimming pool nearby. Rates include horses. Winter sports.
*Focus Ranch	J. B. Temple	Columbine	15	.....	\$30.00-\$45.00	Alt. 6850—Cattle ranch in northern Colorado—ranch house, cabins; range riding, roundups, pack trips, fishing, hunting. Rates include horses. Winter sports.
*H Bar G	H. Gates	Estes Park	52	.....	\$35.00-\$45.00	Alt. 8100—Northeastern Colorado—adj. Rocky Mountain National Park—ranch house, cabins; horses.
*Hacienda Del Monte	Dr. A. F. Stanley	Red Wing	30	.....	\$35.00 up	Alt. 7800—cattle ranch in southern Colorado, adj. San Isabel Natl. Forest—open all year—ranch house, cabins; fishing, hunting.
*Holzworth Ranch	J. G. Holzworth	Grand Lake	50	.....	\$30.00 up	Alt. 8900—adj. Rocky Mountain Natl. Park, 10 mi. from Grand Lake—June 10-Oct. 1—lodge accommodations; rodeos, pack trips, fishing.
Lake Trail	Swinehart & Marvin	Steamboat Springs	25	.....	\$55.00	Alt. 6700—Northern Colorado—cabins; horses, fishing. Rates include horses.
LX Bar Ranch	Mrs. J. C. Woodley Miss E. Stanwood	Hayden	20	.....	\$40.00	Alt. 6300—in northwestern Colorado—June to Sept.—cattle ranch—ranch house, cabins; pack trips, roundups, fishing. Rates include horses. Winter address: 616 Noyes St., Evanston, Ill.

\*Member, Colorado Dude and Guest Ranch Association—Secy. Harvey Witwer, Greeley, Colo.

(List of Ranches continued on next page)

## DUDE and GUEST RANCHES (continued)

Name	Manager	P. O. Address (Colorado)	Capacity	RATES (American Plan) Per Day	Per Week	Other Information
*McGraw	Irene McGraw	Estes Park	32	.....	\$40.00	Alt. 7500—Northeastern Colorado—adj. Rocky Mountain National Park—ranch house, cabins; horses.
Phantom Valley Ranch	H. Wangelin	Grand Lake	40	\$5.00	\$24.50 up	Alt. 8500—near Grand Lake and Rocky Mountain Natl. Park—June-Oct.—ranch house, cabins; camp and pack trips, fishing. Winter address: El Porvenir, New Mexico.
Rio Blanco Ranch	E. A. Harrison	Buford	35	.....	\$42.00	Cattle ranch in western Colorado—ranch house, cabins; fishing, pack trips, rodeos, hunting. Rates include horses.
*Rough Ranch	R. B. Rough	Eggers	20	Rates on application		Alt. 7500—cattle ranch in northern Colorado, on Poudre River—lodge, cabins; fishing, pack trips, hunting.
*Saddle Pocket Ranch	R. D. Salisbury	Battle Creek (Slater)	18	.....	\$35.00-\$45.00	Alt. 6700—in northwestern Colorado—cattle ranch—May-Oct.—ranch house, cabins; roundups, fishing, pack trips, hunting. P. O. Slater.
*S. L. W. Ranch	S. L. Witwer	Greeley	15	.....	\$35.00-\$45.00	Cattle ranch in northern Colorado—ranch house; ranch life, pack trips, rodeos. Rates include horses.
*Smillie's F-Slash Ranch	A. F. Smillie	Granby	35	\$5.00	\$40.00	Cattle ranch—cabins, ranch house; pack trips, wrangling, swimming, tennis, fishing, winter sports. Rates include horses.
Tarryall River	J. Snyder	Lake George	20	.....	\$55.00	Alt. 8200—Guest ranch in Pikes Peak region—June 1-Sept. 15; ranch house, cabins; horses, fishing, pack trips, hiking. Rates include horses.
Treawuker Ranch	R. W. Venuti	Bayfield	40	\$5.00 up	\$32.00-\$42.00	Alt. 7600—cattle ranch in southwest Colorado, near Mesa Verde Natl. Park; May-Nov.—lodge, cabins, recreation house; ranch life, private fishing, trapshooting, gallery, roundups, hunting. Winter address: H. C. Pollock, 8022 Forsythe Blvd., St. Louis Mo.
Woods Lake	R. J. Engelbrecht	Troutville	75	5.00 up	\$32.00 up	Alt. 9405—Central Colorado on Woods Lake near Mount of Holy Cross—June-Oct. Lodge, cabins; horses, fishing, trapshooting.

\*Member Colorado Dude and Guest Ranch Association—Secy. Harvey Witwer, Greeley, Colo



## BOYS' VACATION CAMPS

Name	Director	P. O. Address (Summer) (Colorado)	Capacity	Rates†	Ages	Other Information	Winter Address
Bar I L Ranch	Dr. D. C. Bayless	Tabernaash	50	\$30 wk., 8 wks. \$200	9-17	Season July 1-Aug. 26—lodges; pack trips, swimming, fishing.	301 E. 4th St. Denver, Colo.
Byera Peak Ranch	G. Arnold	Fraser	35	\$155 mo., 2 mos. \$310	8-18	July-Aug.—Ranch house, cabins; athletics, nature study, crafts.	Before May 15 Tours Hotel, Denver, Colo.
Camp Holy Cross	Rev. E. J. Vollmer, D.S.B.	Canon City (Box 351)	75	6 wks. \$50	8-14	Operated by order of St. Benedict—June 25-Aug. 6—camp, ranch and lodge accommodations; riding, nature study all outdoor sports.	Holy Cross Abbey, Canon City, Colo.
Camp Ten Sleep	Ralph Hubbard	Elbert	..	\$28 wk., 8 wks. \$225	14-20	In Pike's Peak region—June 22-Sept. 1—cabins, tents, art crafts, nature study, rodeo trip.	
Cheley Colorado Camps— Camp Haystack Camp Skiff Junior Lodge Senior Boys Double V Ranch	F. H. Cheley .....	Estes Park Westcliffe	36 34 34 23 20	\$225 each 5-wk. term \$205 each 5-wk. term \$185 each 5-wk. term \$225 each 5-wk. term 8 wks. \$300 4 wks. \$175	13-16 10-13 7-10 16 up 13-21	Season June 22-Aug. 31—(see Note 2, page 44). See also "Trail's End Ranch." Adj. San Isabel Natl. Forest. All activities optional.	601 Steele St. Denver, Colo.
*Quarter Circle H Ranch	Lee B. Hermann	Woodland Park	50	8 wks. \$400	13-21	In Pike Natl. Forest, 8 wk. season (July, Aug. only)—lodge, cabins; individual optional program; swimming, tennis, golf, rodeo.	521—5th Ave. New York, N. Y.
Rio Blanco Ranch	Mr. & Mrs. E. A. Harrison	Buford		4 wks. \$165, 8 wks. \$315	8-18	Western Colorado cattle ranch—ranch house, cabins; athletics, swimming, fishing, pack trips, rodeos. Rates include horses.	208 W. Euclid Arlington Heights, Illinois
Bar V-El Ranch	G. Prentice	Sedalia	35	8 wks. \$230 10 wks. \$295	8-18	Alt. 7500—cattle ranch Pike Natl. Forest, June 15-Aug. 21—swimming, pack trips, rodeos, tutoring.	Before June 1 1107 S. Corona St. Denver, Colo.
Rocky Mt. Boys' Camp	D. C. Primrose	Estes Park	40	8 wks. \$330	....	Adj. Rocky Mt. Nat. Park June 25-Aug. 20—lodge, cabins; athletics, pack trips, swimming, tutoring.	1807 Portland Ave., St. Paul
*Roundup Lodge for Boys	Dr. E. A. Marquard	Buena Vista	70	Rates on application	8-18	In central Colorado, 8 wk. term—lodge, cabins; athletics, pack trips, swimming pool.	4501 Olive St. St. Louis, Mo.
Shut-at-ka Camp	G. A. Asklung	Lyons	75	4 wks. \$125, 8 wks. \$240	8-18	Alt. 8300—adj. Rocky Mountain Natl. Park, June 20-Aug. 14—lodge, cabins; riding, swimming, fishing, model building.	1200 Josephine St. Denver, Colo.
Tom Tucker Ranch	C. O. Auger	Nederland	30	\$40 wk., 8 wks. \$300	8-18	In Boulder-Glacier region, June 24-Aug. 19—lodge quarters.	764 Madison St. Denver, Colo.
Trail's End Ranch	M. C. Dorsett	Glen Haven	40	\$130 each 5-wk. term	10-21	A Cheley camp, adj. Rocky Mtn. Natl. Park, June 22-Aug. 31.	601 Steele St. Denver, Colo.
Two Bars Seven Ranch	Red Schaffer	Virginia Dale	25	\$35. per wk.	14-20	Alt. 7800—Cattle ranch in Roosevelt Natl. Forest—ranch house; fishing, hiking, riding, woodcraft, pack trips, rodeo.	Fort Collins, Colo.
Y.M.C.A. Boys' Camp (Camp Chief Ouray)	Leslie S. Deal, Secy.	Granby	130	\$16 wk.	10-18	On Colorado River, June 18-Aug. 27—lodge, cabins; recreation hall. 5 terms 2 wks. each.	Y.M.C.A. Denver, Colo.

†Rates shown on American plan, including board, room, (and, in some cases) transportation to and from nearest railway station.

\*Member, Colorado Dude and Guest Ranch Association.

## GIRLS' VACATION CAMPS

Name	Director	P. O. Address (Summer) (Colorado)	Capacity	Rates†	Ages	Other Information	Winter Address
Allbrook Camp	Mrs. Bertha G. Allebrook	Estes Park	60	4 wks. \$200, 8 wks. \$350	6-20	In Rocky Mountain Natl. Park, June-Sept.—riding, art work, dramatics, music, swimming.	Before June 20: Fort Lupton, Colo.
Bluebird Cottage Bluebird Lodge	Miss E. M. Tracy, Pres.	{ Boulder Gold Hill	{ 25 65	\$15 wk., \$35 mo.	Note 1)	{ Cottage in Boulder city; lodge in mountains of Boulder-Glacier dis- trict.	Josephine Loonem, C. B. & Q. R. R., 179 W. Jackson Blvd., Chicago, Ill
Camp Lookout	Dorothy Richardson	Golden	50	2 wks. \$20 (3-2 wk. terms)	12-18	Eastern Colorado—June 25-Aug. 6—lodge, ten-cabins; horses, tennis, archery, crafts athletics. Winter address: 1545 Tremont Pl., Denver.	
Cheyey Colorado Camps— Chipeta Junior Camp Chipeta Chipeta Chipeta Senior	F. H. Cheley	Estes Park	{ 29 28 56 36	\$185 each 5-wk. term \$205 each 5-wk. term \$225 each 5-wk. term \$225 each 5-wk. term	{ 7-11 11-13 13-16 16 up	Season June 22-Aug. 31—(see Note 2).	Season June 22-Aug. 31—(see Note 2).
Kinnikinnik Camp	Mrs. S. A. Wilkinson	Colorado Springs	..	Term \$250	6-20	In Pikes Peak region—season July and August—art crafts, nature study, dramatics, organized music, swimming, riding.	P. O. Box 513 Seminole, Okla.
Perry Mansfield Round-Up Camps	Portia Mansfield, Charlotte Perry	Steamboat Springs after June 1st)	100	\$190 mo., 2 mos. \$350 (July, Aug. only)	10-20	Northwestern Colorado—lodge, cabins; individual programs; tennis, pack trips, polo, gymnastics, rodeos, horse show; horsemanship and counselor training, summer school of theatre arts—dance, drama, music, art; hot springs and swimming pools nearby. Winter address: 110 Brevoort Lane, Rye, N. Y.	
*Quarter Circle H Ranch	Lee B. Hermann	Woodland Park	50	4 wks. \$400	13-21	In Pike Natl. Forest, 8 wk. season (July, Aug. only)—lodge, cabins; individual optional program, swimming, tennis, golf, rodeo.	521—5th Ave., New York, N. Y.
Rio Blanco Ranch	Mr. & Mrs. E. A. Harrison	Buford	35	4 wks. \$165, 8 wks. \$355.	8-18	Western Colorado cattle ranch—ranch house, cabins; athletics, swimming, fishing, pack trips, rodeos. Rates include horses.	228 W. Euclid Arlington Heights, Illinois
Rocky Mountain Camp	Mrs. Wm. S. Curd	Estes Park	35	4 wks. \$185, 8 wks. \$310	8-18	June 23-Aug. 16—lodge accommodations; riding, tennis, archery, athletics, bi-weekly auto trips.	
*San Luis Ranch	Mrs. R. K. Potter	Colorado Springs	..	\$45 wk., 4½ wks. \$185, 9 wks. \$360	6-20	In Pikes Peak region—July 1-Aug. 30—accommodations at San Luis Ranch, and ranch house in White River Natl. Forest. All activities elective—swimming, tennis, art crafts, pack trips, horse show, rodeo, dancing, dramatics. Rates include riding and 2 wks. at ranch house.	

\*Member, Colorado Dude and Guest Ranch Association.

†Rates shown on American plan, including board, room, and (in some cases) transportation to and from nearest railway station.

Note 1. For self-supporting Chicago girls and women.

Note 2. Cheley Colorado Camps—for Boys and Girls: The Cheley Colorado Camps are located on the Land O'Peaks Ranch, five miles south of Estes Park, adjoining Rocky Mountain National Park. Activities are under a large group of trained instructors and counselors (one to each 8 campers), all under the direction of Frank H. Cheley. Chief object of the camps is to provide a vacation both enjoyable and educational with well-balanced daily programs of supervised play and instruction. . . . including camp craft, woodcraft, geology, forestry, botany, horsemanship, swimming, simple surveying, fishing, hikes and nature rambles. Camps are segregated as to boys and girls, and further divided as to ages.



## HOTELS and RESORTS—GENERAL LIST

Postoffice, County— Hotels, Resorts, etc.	Manager	Capacity	RATES (American Plan unless otherwise indicated.)		Other Information
			Per Day	Per Week	
ALAMOS (Alamosa Co.)—Alt. 7546—On Rio Grande River, in southern Colorado, near Great Sand Dunes Natl. Monument. Victoria Hotel Walsh Hotel	W. H. Dye J. T. Walsh	75 Rooms 48 Rooms	(E) \$1.50 up (E) 1.50 up	(E) \$9.00 up (E) \$9.00 up	
ANTONITO (Conejos Co.)—Alt. 7888—In San Luis Valley, southern Colorado, near Rio Grande Natl. Forest. Palace Hotel	J. R. DuBois	.....	(E) \$1.00 up	.....	
ASPEN (Pitkin Co.)—Alt. 7850—Famous silver mining district of central Colorado, in Holy Cross National Forest—adj. highest peaks in Colorado. Highland-Bavarian Lodge	T. J. Flynn	Limited	\$7.00	On app.	By reservation only—lodge accommodations; winter sports, ski instruction. Eastern office: 1 E. 37th St., New York City—Pacific Coast Office: 607 Equitable Bldg., Hollywood, Calif.
Jerome Hotel	M. S. Elisha	100 Rooms	\$3.00 up	On app.	
BAILEY (Park Co.)—Alt. 7735—Platte River Canyon resort, in Pike Natl. Forest. Glenlake Hotel Royal Ranch Lodge	A. W. Baldwin C. C. Royal	.....	\$3.00 up Rates on application	\$18.00 up Rates on application	Hotel, cabins; horses, swimming, tennis. Cabins; horses, fishing.
BAYFIELD (La Platte Co.)—Alt. 6900—In southwestern Colorado, on Los Pinos River, adj. San Juan Natl. Forest. H-U-Bar Ranch	Hugh Currie & Son	Limited	\$3.50 up	\$21.00 up	Alt. 7000—cabin accommodations; horses, fishing, hunting.
BENDMEER (Clear Creek Co.)—Alt. 7750—In Bear Creek Canyon, Denver Mountain Park. Bendmeier Lodge	Hoff-Schroeder Co.	150	(E) \$2.00 up	(E) \$15.00 up	Lodge, cottages; horses.
BLACK HAWK (Giplin Co.)—Alt. 9000—Famous old mining camp, site of early Gregory diggings. Giplin Hotel Heidi Chalet	Joe Barage Mrs. N. Swarthout	40 Rooms 25	\$3.00 up .....	\$20.00 up .....	June 15-Sept. 15. Lodge, cabins.
BOULDER (Boulder Co.)—Alt. 5150—Gateway to Boulder-Glacier region; University of Colorado (summer school). (See also Gold Hill, Colo.) Albany Hotel Alpa Hotel Colorado Chautauqua	R. J. Bush R. C. Rubright F. A. Boggess, Secy	100 Rooms 50 400	(E) \$1.00 up (E) \$1.00 up Rates on application	(E) \$5.00 up (E) \$18.00-\$25.00 Rates on application	In Boulder City—swimming pool. In Boulder Canyon. On outskirts of city—45 cottages, 2 lodges; auditorium, dining hall, community house, Chautauqua and summer school. In Boulder City. In Boulder Canyon—open all year—cabin accommodations.
Arlington Hotel Blanchard Lodge Bluebird Cottage—(see Girls' Camp) Boulderado Hotel El Vado	Howe Bros. J. C. Doherty W. P. Pope J. E. Tinsley	30 Rooms 35 Rooms 100 Rooms 60	(E) \$1.00 up (E) \$1.00 up (E) \$1.25 up .....	\$20.00 up ..... (E) \$8.75 up (E) \$12.00-\$18.00	In Boulder City. In Boulder Canyon—10 cabins, lodge; tennis, swimming. Season and student rates. In Boulder City.
Monticello Hotel	C. D. Scott	75 Rooms	(E) \$1.25 up	.....	
BROOK FOREST (Jefferson Co.)—Alt. 8000—In Denver Mountain Park. Brook Forest Inn	Edwin F. Welz	50 Rooms	\$5.00 up	\$28.00 up	May to Nov.—lodge, Swiss chalets, cottages, recreation hall; tennis, horses, etc.
BUENA VISTA (Chaffee Co.)—Alt. 7968—In Arkansas Valley, central Colorado—near hot springs region; swimming. Byrd Colony Princeton Hotel	Byrd R. Fuqua Thos. R. Bay	50 36 Rooms	(E) \$1.50 up .....	\$30.00 .....	Lodge, cabins; hot springs, swimming pool, fishing. References.
BUFORD (Rio Blanco Co.)—Alt. 7900—Northwest Colorado on White River, White River Natl. Forest—fishing, hunting. Fitzgerald Lodge Twin Springs Resort	Noren & Noren O. C. Sizemore	35 40	\$4.00 .....	\$25.00 \$25.00-\$35.00	Cabin accommodations; horses, pack trips. Cabins, club house; horses, pack trips.

(List continued on next page)

## HOTELS and RESORTS—GENERAL LIST (continued)

Postoffice, Country— Hotels, Resorts, etc.	Manager	Capacity	RATES (American Plan unless otherwise indicated.)		Other Information
			Per Day	Per Week	
BUFFALO (Jefferson Co.)—Alt. 6631—Platte Canyon resort, in Pike Natl. Forest. Wigwam Ranch	W. H. Gilmore	20	.....	\$18.50	May to Oct.—horses, fishing, hunting.
CANON CITY (Fremont Co.)—Alt. 5344—On Colorado River, adj. Royal Gorge and Suspension Bridge—mineral springs and baths. Canon Hotel	C. J. Thayer	60 Rooms	(E) \$1.50 up	.....	
Strathmore Hotel	Eleanor K. Eddy	100 Rooms	(E) \$1.50 up	.....	
CASCADE (El Paso Co.)—Alt. 7500—In Pikes Peak district. Eastholme Hotel	Mrs. A. S. Hewitt	40	\$3.50	\$16.00-\$18.00	May to Oct.
CEBOLLA (Gunnison Co.)—Alt. 7354—On Gunnison River, western Colorado. Carpenter's Fishing Resort	I. P. Carpenter	60	\$3.00 up	\$20.00 up	May to Oct.—cabins; saddle horses, pack trips, fishing, hunting.
CEDAREIDGE (Delta Co.)—Alt. 6175—In Grand Mesa Natl. Forest, western Colorado. Morse Lodge	.....	100	.....	\$25.00	Hotel, cabins; fishing, swimming, horses.
CENTRAL CITY (Gipps Co.)—Alt. 8560—Famous gold mining district—Annual Play Festival in Old Opera House (July). Teller House	H. J. Teller	75 Rooms	\$2.50 up	.....	Picturesque hotel of early mining days.
CHEROKEE PARK (Larimer Co.)—Alt. 7000—Northern Colorado, on Poudre River in Roosevelt Natl. Forest. Campton's Hotel	.....	.....	\$3.50 up	\$21.00	Lodge, cabins; horses, fishing, golf, tennis.
CLIFFDALE (Jefferson Co.)—Alt. 6923—Platte Canyon resort in Pike Natl. Forest—trout fishing. Cliff Hotel	Mrs. M. L. King	35	.....	\$10.00 up	Cottages. P. O. Pine, Colo.
COALMONT (Jackson Co.)—Alt. 8500—Northern Colorado, E. slope of Continental Divide, near Routt Natl. Forest. Shamrock Ranch	W. H. Rickard	12	\$5.00	\$30.00	Lodge accommodations; horses, fishing, pack trips, hunting. Rates include horses.
CREEDE (Mineral Co.)—Alt. 8844—Famous silver mining camp on Rio Grande River, southwest Colorado. Antlers Park Resort	Arthur Weaver	75	.....	\$17.50 up	May to Oct.—hotel, cabins.
CROSSONS (Jefferson Co.)—Alt. 7073—Platte Canyon resort in Pike Natl. Forest. Crossons Hunting and Fishing Resort	Mrs. H. A. Dick	50	.....	\$12.50 up	May to Oct.—cabins, ranch; fishing.
DECKERS (Douglas Co.)—Alt. 6666—Fishing resort on South Platte River in Pike Natl. Forest—mineral springs. Deckers Springs Fishing Resort	Mrs. Mahel Wilson	100	\$3.50 up	.....	May to Oct.—cabins; fishing. Lodge, cabins; fishing, horses, dancing.
Grandview Lodge	Mrs. M. A. Poston	75	.....	\$15.00 up	
DELTA (Delta Co.)—Alt. 4980—Western Colorado on Gunnison and Uncompahgre Rivers, near Uncompahgre and Grand Mesa Natl. Forests—golf club, swimming pool. Delta House	Otto Bugg	44 Rooms	(E) \$1.50 up	.....	
DURANGO (La Plata Co.)—Alt. 6920—Southwest Colorado on Animas River—gateway to Mesa Verde Natl. Park. Savoy Hotel	J. H. Scott	40 Rooms	(E) \$1.50 up	.....	
Southern Hotel	W. D. Stillwell	34 Rooms	(E) \$1.00 up	.....	
Strater Hotel	J. A. Segerberg	85 Rooms	(E) \$1.50 up	.....	
ECHO LAKE (Gipps Co.)—Alt. 7065—In Denver Mountain Parks, at foot of Mt. Evans scenic highway. Echo Lake Lodge	A. Willey	40	\$5.00 up	.....	P. O., Evergreen, Colo.

(List continued on next page)



## HOTELS and RESORTS—GENERAL LIST (continued)

Postoffice, County— Hotels, Resorts, etc.	Manager	Capacity	RATES (American Plan unless otherwise indicated.) Per Day	Per Week	Other Information
EGGERS (Larimer Co.)—Alt. 7500—Northern Colorado, on Poudre River, E. slope of Rockies. Komanche Lodge	Bennett & Son	Limited	\$3.00	\$20.00	Alt. 9000—lodge, cabins; horses, private fishing.
ELDORA (Boulder Co.)—Alt. 8643—In Boulder-Glacier region, on Middle Boulder Creek. Gold Miner Hotel	F. J. Anderson	25	\$3.00	\$18.00	Hotel, cabins; fishing.
ELDORADO SPRINGS (Boulder Co.)—Alt. 8800—In Boulder-Glacier region, on South Boulder Creek—hot springs, outdoor swimming pool. New Eldorado Hotel	N. G. Conda	36 Rooms	(E) \$2.00 up	.....	Summer only.
EMPIRE (Clear Creek Co.)—Alt. 8245—In famous Clear Creek mining district. Glen Arbor Lodge	Mrs. A. Guinella	40	(E) \$1.50 up	\$15.00-\$17.50	
ESTABROOK (Park Co.)—Alt. 7564—Platte River Canyon resort in Pike Natl. Forest. Silver Spruce Ranch	Fred Roegel	40	.....	\$14.00 up	May to Oct.—horses, fishing, golf.
EVERGREEN (Jefferson Co.)—Alt. 7500—In Denver Mountain Parks, on Bear Creek—Evergreen Lake—golf. Marshall Park Hotel	Dr. W. C. Marsh	75	\$3.50 up	\$18.00 up	Lodge, cottages; horses, tennis, golf, guides.
.....	Victor L. Toft	150 Rooms	\$5.50 up	\$37.50 up	Hotel, cottages (35); outdoor swimming pool, horses, tennis.
.....	S. S. & C. M. Veizna	18	.....	\$20.00-\$25.00	Cattle ranch—ranch house accommodations; pack trips, fishing, tennis, golf (nearby).
FAIRPLAY (Park Co.)—Alt. 9664—Old placer mining district, in Pike Natl. Forest—winter sports. Fairplay Hotel	J. H. Hand	50 Rooms	\$2.00 up	.....	Hunting, fishing.
FLORISSANT (Teller Co.)—Alt. 8193—In Pikes Peak Region, adj. Colorado Petrified Forest and Pike Natl. Forest. Colorado Petrified Forest Ranch	P. J. Singer	25	\$5.00 up	\$20.00 up	June 10-Oct. 20—Guest ranch—lodge accommodations; horses, fishing, pack trips.
FORT COLLINS (Larimer Co.)—Alt. 7000—Northern gateway to Colorado vacation regions, Poudre Canyon resorts, Roosevelt Natl. Forest—Colorado Agricultural College—golf club. Antlers Hotel	C. H. Bohne	40 Rooms	(E) \$1.00 up	.....	
.....	C. W. Post	80 Rooms	(E) \$1.50 up	.....	
.....	B. Holtum	31 Rooms	(E) \$1.00 up	.....	
.....	W. S. Richeson	130 Rooms	(E) \$1.50 up	.....	
FOXTON (Jefferson Co.)—Alt. 6461—Platte River Canyon resort in Pike Natl. Forest. Fox-on-the-Platte Idlelease Guest Ranch	J. C. Roach John Reynolds	40 40	..... \$2.00 up	(E) \$25.00 (month) \$12.50	Alt. 7200—cabin accommodations. June to Oct.—ranch house, cabins; horses, tennis, fishing.
GEORGETOWN (Clear Creek Co.)—Alt. 8440—Famous Clear Creek mining camp—site of Georgetown Loop. De Paris Hotel	.....	25 Rooms	(E) \$1.50 up	.....	Picturesque hotel of early mining days.
GLENWOOD SPRINGS (Garfield Co.)—Alt. 5758—On western slope of Rockies—adj. Holy Cross and White River Natl. Forests—mineral springs, golf. Hotel Colorado	Mrs. E. Lucas	250 Rooms	(A) \$5.00 up	.....	Hotel; vapor caves and baths, outdoor mineral water swimming pool (open all year), golf, tennis, polo.
.....	A. W. Kendrick	100 Rooms	(E) \$3.00 up	.....	
.....	M. J. Keough	75 Rooms	(E) \$1.50 up	.....	
GOLD HILL (Boulder Co.)—Alt. 8300—Mountain resort in Boulder-Glacier district. (See also Boulder, Colo.) Bluebird Lodge—(see Girls' Camps). Double-M Ranch	Mrs. F. C. Molloy	50	\$3.50 up	\$21.00 up	June 1-Sept. 15—hotel, cottages; horses, fishing.

(List continued on next page)

## HOTELS and RESORTS—GENERAL LIST (continued)

Postoffice, County— Hotels, Resorts, etc.	Manager	Capacity	RATES (American Plan unless otherwise indicated.)		Other Information
			Per Day	Per Week	
GRANBY (Grand Co.)—Alt. 7035—On Fraser River, adj. Rocky Mountain Natl. Park KaRose Resort	.....	60	\$5.00	\$27.00	In Arapahoe Natl. Forest, near Lake Monarch—May to Oct.—lodge cottages; horses, tennis, archery, private fishing club privileges.
Valley Ranch	Mrs. H. B. Woolfolk	.....	\$3.50-\$4.00	\$20.00-\$25.00	Alt. 8500—May-Nov.—lodge, cottages; horses, fishing, hunting.
Y.M.C.A. Boys' Camp (Camp Chief Ouray)—(see Roys' Camps).					
GRAND JUNCTION (Mesa Co.)—Alt. 4583—Western Colorado, at junction Gunnison and Colorado Rivers, gateway to Colorado Natl. Monument, Grand Mesa Natl. Forest. La Court Hotel	Wm. Butthorn	150 Rooms	(E) \$1.50 up	.....	
St. Regis Hotel	H. E. Burnett	75 Rooms	(E) \$1.50 up	.....	
GRAND MESA (Delta Co.)—Alt. 10,300—Western Colorado fishing resort on the Grand Mesa. Morse Lodge	.....	100	.....	\$25.00	Lodge, cottages; fishing. P. O. Cedaredge, Colo.
GREILEY (Weld Co.)—Alt. 6651—Northern Colorado, on Cache la Poudre River—Colorado State Teachers College (summer school)—annual rodeo (July). Albion Hotel	W. H. Kelley	45 Rooms	(E) \$1.00 up	.....	
Camfield Hotel	J. C. Ewing, Jr.	125 Rooms	(E) \$1.25 up	\$7.50 up	Open all year.
Sterling Hotel	C. D. Scott	60 Rooms	(E) \$1.25 up	.....	
GREEN MOUNTAIN FALLS (El Paso Co.)—Alt. 7843—In Pikes Peak district on Ute Pass. Brockhurst Dude Ranch	H. W. Brockhurst	30	.....	\$20.00 up	Cattle ranch—ranch house, cabins, recreation lodge; fishing, hunting, pack trips.
Columbine Hotel	A. M. Woods	41 Rooms	\$3.50 up	.....	May to Oct.
Green Mountain Lodge	Mrs. June Spain	20 Rooms	\$3.00 up	.....	June 15-Sept. 15.
Outlook Hotel	Mrs. W. F. Hunter	20 Rooms	\$3.00 up	.....	Summer only.
Terrace Hotel	Charles Elwell	20 Rooms	\$4.00 up	.....	July to Sept.
GUNNISON (Gunnison Co.)—Alt. 7683—Western Colorado, on Gunnison River, adj. Gunnison Natl. Forest—Western State Teacher College—poled fishing, hunting, rodeo and fishing tournament (July). Columbine Hotel	Joe Vontaz	.....	(E) \$1.00 up	.....	
Commercial Hotel	H. A. Johnson	.....	(E) \$1.00 up	.....	
La Veta Hotel	John Souder	100 Rooms	\$3.50 up	.....	
Cottonbush-on-the- Gunnison	H. F. Trampe	50	\$3.00	\$18.00	Ranch life, horses, fishing, golf, tennis, hunting.
HOMER (Larimer Co.)—Alt. 7514—Northern Colorado fishing resort in Poudre River Canyon. Zimmerman's Hotel	Zimmerman Sisters	50	\$3.50 up	\$18.00 up	May to Oct.
HOT SULPHUR SPRINGS (Grand Co.)—Alt. 7665—Central Colorado, adj. Arapahoe Natl. Forest—hot mineral springs, swimming pool, winter sports. Grand Hotel	N. C. Huffaker	25 Rooms	(E) \$1.00 up	.....	
Riverside Hotel	O. L. Qualls	30 Rooms	(E) \$1.00 up	.....	
IDAHO SPRINGS (Clear Creek Co.)—Alt. 7549—In Clear Creek Canyon, famous gold mining district—adium hot springs and vapor baths. Placer Inn	Rocky Mountain Motor Co.	Limited	(E) \$2.00 up	.....	
Radium Hot Springs Hotel	R. M. Dresslar	130	\$2.50 up	.....	Hotel, dining room—cottages; radium and vapor baths, swimming pool.
JELM, WYO. (Albany Co.)—Alt. 8300—in Roosevelt Forest, extreme northern Colorado. Glendevy Ranch	Mrs. J. Glen Briggs	Limited	Rates on application	.....	May 25-Oct. 20—lodge, cabins; fishing, pack trips, hunting.
LAKE CITY (Hinsdale Co.)—Alt. 8636—Famous mining camp in San Juan Valley, southwestern Colorado—fishing. Lake Shore Inn	F. C. French	30 Rooms	\$3.50	.....	On Lake San Cristobal—May to Oct.—ranch, cabins.
LEADVILLE (Lake Co.)—Alt. 10,200—Highest incorporated city in world—center of historic gold and silver mining region (site of famous Matchless Mine)—near highest mountains in Colorado. Vendome Hotel	P. W. Hanson	100 Rooms	(E) \$1.50 up	.....	Fishing, hunting, golf, winter sports in vicinity.

(List continued on next page)



## HOTELS and RESORTS—GENERAL LIST (continued)

Postoffice, County— Hotels, Resorts, etc.	Manager	Capacity	RATES (American Plan unless otherwise indicated.) Per Day	Per Week	Other Information
LIVERMORE (Larimer Co.)— Trail's End Ranch	Alt. 5700—In Northern Colorado, E. slope of Rockies, on Dale Fork River. Frank C. Miller	Limited	\$4.00	\$25.00	Alt. 7500—guest ranch on No. Poudre River—lodge, cabins, recreation hall; horses, swimming pool, roundups, rodeos, fishing; large private wild life refuge; hunting in season. Winter sports.
LONGMONT (Boulder Co.)— Imperial Hotel	Alt. 5900—Gateway to Rocky Mountain Natl. Park. L. C. Allen	50 Rooms	(E) \$1.25 up		
LOVELAND (Larimer Co.)— Loveland Hotel	Alt. 4986—Gateway to Rocky Mountain Natl. Park via Big Thompson Canyon. E. W. Borland	70 Rooms	(E) \$1.25 up		
LYONS (Boulder Co.)— Burlington Hotel	Alt. 5375—Gateway to Rocky Mountain Natl. Park via St. Vrain routes. Mrs. W. R. Kirkald		(E) \$1.50 up		
MANITOU (El Paso Co.)— Cliff House	Alt. 6118—Foot of Mt. Manitou and Pikes Peak—Mineral springs and baths. E. E. Nichols	265 Rooms	(A) \$4.00 up (E) \$2.00 up		
Grand View Hotel	J. B. Paulson	150 Rooms	(E) \$1.50 up		Summer only. Weekly rates.
Sunnyside Hotel	W. D. Schaffner	50 Rooms	(A) \$4.00 up (E) \$1.50 up (A) \$3.50 up		Summer only.
MONTE VISTA (Rio Grande Co.)— El Monte Hotel La Veta Hotel	Alt. 7665—Southwest Colorado—Annual San Luis Valley Ste-Hi Stampede Rodeo (August). Mrs. R. R. Shaub J. K. Holmes	50 Rooms 28 Rooms	(E) \$1.50 up (E) \$1.50 up		
MONTRORSE (Montrose Co.)— Belvedere Hotel	Alt. 5811—Western Colorado, gateway San Juan Mountains, near Black Canyon of the Gunnison—outdoor swimming pools. J. V. Souder	50 Rooms	(E) \$1.50 up		
MORRISON (Jefferson Co.)— Hillcrest Inn	Alt. 5669—In Denver Mountain Park—adj. Red Rock Dinosaur Park. Mrs. E. F. Sparks	42 Rooms	\$4.00 up	\$20.00 up	Hotel; horses, outdoor swimming pool, tennis.
OURAY (Ouray Co.)— Beaumont Hotel St. Elmo Hotel Wilson Hotel	Alt. 7721—Western Colorado, famous mining camp in Uncompahgre Natl. Forest, adj. San Juan Mountains—hot and cold mineral springs, outdoor swimming pools, fishing, hunting. Open all year. E. W. Creel C. F. Seiberlein	50 Rooms 23 Rooms 23 Rooms	(E) \$1.25 up (E) \$1.50 up (E) \$1.50 up		
PACOSA SPRINGS (Archuleta Co.)— Metropolitan Hotel	Alt. 7100—Southwest Colorado, in San Juan Natl. Forest—hot mineral springs, baths, pools. J. C. Moloy	36 Rooms	(E) \$1.00 up		
PALMER LAKE (El Paso Co.)— The Esplanade Old English Lodge	Alt. 7237—On Palmer Lake, Pikes Peak region, adj. Pike Natl. Forest. Bernard M. Joy A. M. Lawson	19 Rooms 20 Rooms	Rates on application Rates on application		Special facilities for student groups. Lodge accommodations; swimming, tennis, fishing, horses.
PARSHALL (Grand Co.)— Buckhorn Lodge	Alt. 7655—On Colorado River, W. slope of Rockies, adj. Rocky Mtn. Natl. Park—near hot sulphur springs. E. M. Messter	35	\$6.00 up \$42.00 up		June-Oct.—guest ranch; lodge, cabins; swimming, fishing, tennis, archery, trapshooting, horses, hunting.
PEACEFUL VALLEY (Boulder Co.)— Forest Inn	Alt. 8500—On Middle St. Vrain Creek, adj. Rocky Mountain National Park. E. F. Sanders	75	(E) \$1.00 up	\$17.00	May to Nov.—cabins; horses, fishing.

(List continued on next page)

## HOTELS and RESORTS—GENERAL LIST (continued)

Postoffice, County— Hotels, Resorts, etc.	Manager	Capacity	RATES (American Plan unless otherwise indicated.)		Other Information
			Per Day	Per Week	
<b>PONCHA HOT SPRINGS</b> (Chaffee Co.)—Alt. 7471—In Arkansas Valley, southern Colorado, near Sangre de Christo Range—mineral springs. Hotel, cabins. Hot Springs Hotel A. T. Hartwick			\$3.00 up	.....	May to Nov.—hotel, cabins.
<b>RAND</b> (Jackson Co.)—Alt. 8390—Northern Colorado on Illinois River, near Rabbit Ear Range. Rand Hotel Mrs. D. Leatherman		40	\$4.00 up	.....	
<b>RIFLE</b> (Garfield Co.)—Alt. 5130—Central Colorado, gateway to White River Natl. Forest and Meeker country—fishing, hunting. Midland Hotel F. T. Bratzler		40 Rooms	(E) \$1.00 up	.....	
<b>SALIDA</b> (Chaffee Co.)—Alt. 7050—In Arkansas River Valley, adj. Sangre de Christo Range—fishing, hot mineral baths and indoor swimming pool; winter sports. Palace Hotel Sherman Hotel		30 Rooms 30 Rooms	\$1.50 up \$1.50 up	.....	
<b>SEDALIA</b> (Douglas Co.)—Alt. 7000—Eastern Colorado, 30 miles S. of Denver. Woodbine Lodge M. S. Bucknam		.....	\$2.50 up	On app.	In Jarre Canyon, 7 mi. from Sedalia—lodge, cabins, recreation hall.
<b>STEAMBOAT SPRINGS</b> (Routt Co.)—Alt. 6683—Northwest Colorado, gateway to Routt Natl. Forest region—mineral springs, golf, winter sports. Columbine Lodge Glen Eden Mad Creek Ranch Perry Mansfield Club Camp Charlotte Perry		20 ..... ..... 20	\$2.50 up \$2.50 up \$3.00 up \$40.00 wk., \$210 mo., 2 mos. \$375	On app. \$15.00 ..... .....	Cabins; fishing. On Elk River—cabins; fishing. June 1-Oct. 30—lodge, cabins; horses, fishing, hunting. Operated in conjunction with Perry Mansfield Round-up Camps (see Girls' Camps)—same activities. Lodges, cabins. Family and camper rates. May to Oct.
<b>Steamboat Cabin</b> .....		100 Rooms	(E) \$1.50 up (A) \$3.00 up	.....	
<b>TELLURIDE</b> (San Miguel Co.)—Alt. 8746—Famous San Juan mining camp in San Miguel Mountains, western Colorado. Sheridan Hotel John Moore		40 Rooms	(E) \$1.50 up	.....	
<b>WAGON WHEEL GAP</b> (Mineral Co.)—Alt. 8439—Western Colorado, on Rio Grande River. Hot Springs Hotel Neal Ranch A. G. Neal		50 Rooms 40	\$6.00 .....	..... \$10.00 up	June to Sept. May to Oct.—cabins; horses, fishing.
<b>WARD</b> (Boulder Co.)—Alt. 8000—In Roosevelt Natl. Forest, adj. Rocky Mountain Natl. Park and Boulder-Glacier region. Lodge of Pines Howard & Richards		30	\$5.50-\$7.50	\$32.50-\$47.50	Cabin accommodations, dining lodge—horses, swimming, fishing.
<b>WAUNITA HOT SPRINGS</b> (Gunnison Co.)—Alt. 9000—Western Colorado, near Gunnison Natl. Forest—mineral springs. Waunita Hot Radium Springs Resort		150	\$3.50 up	.....	June 1-Oct. 1—hotel, cottages; horses, golf, tennis, swimming, hunting.
<b>WESTCLIFFE</b> (Custer Co.)—Alt. 7861—Southern Colorado, near Sangre de Christo Range, adj. San Isabel Natl. Forest. Alpine Lodge Westcliffe Hotel S. E. Lowery H. N. Bellisle		20 Rooms	\$1.00 up	.....	Lodge, cabins; horses.
<b>WOODLAND PARK</b> (Teller Co.)—Alt. 7000—In Pikes Peak region, adj. Pike Natl. Forest. El Rancho Taos La Fonda Hotel Quarter Circle H Ranch Timber Top Ranch Bud Buckingham Mrs. A. Rogers Lee B. Hermann		30 50 50	Rates on application Rates on application ..... .....	..... \$35.00 up .....	Cabin accommodations. Open all year—cabins; ranch life, swimming, tennis, golf, rodeo. Eastern office: 521—5th Ave., New York, N. Y. Cattle ranch open all year—lodge, cabins; range-riding, roundups, rodeos, fishing, hunting, winter sports.





*From any point in Rocky Mountain National Park, the summit of Long's Peak commands attention.*

*Colorado is a Winter Sports paradise, with timber free runs to challenge anyone's skill.*





## The Burlington's Colorado Service

### The DENVER ZEPHYRS

*Diesel powered—Built of Stainless Steel*

A trip to Colorado on one of the Burlington's great Denver Zephyrs will complete one hundred per cent of the possibilities of your western vacation. Diesel-powered and built of stainless steel, these luxurious trains offer every modern travel accommodation plus incomparably smooth speed. They make the 1034-mile trip from Chicago to Denver "Overnight Every Night," thus adding almost two full days on each round-trip to one's vacation time.

Each of the two Denver Zephyrs includes a magnificent full-length observation car with solarium lounge at the famous rounded Zephyr end; then, in streamline succession forward, two

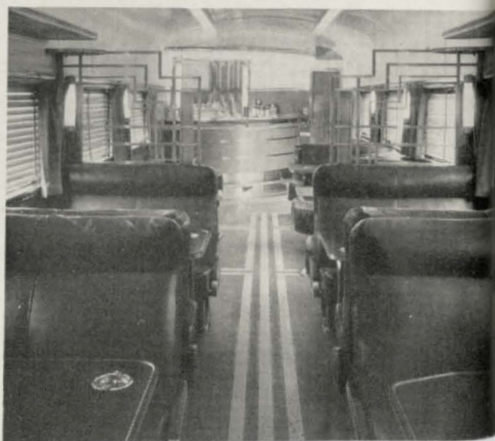
luxurious all-room cars (four roomettes, four chambrettes, ten bedrooms, four compartments, 2 drawing rooms); three 12-section Pullmans; an exquisite full-length dining car; delightful chair cars, dinette-coach, and a gay cocktail lounge.

The accommodations and appointments of these representatives of the illustrious Zephyr family create entirely new conceptions of travel comfort and convenience. Each car on each train is individually decorated and upholstered in charming harmonious fashion. There are many innovations—telephone service between dining car, observation lounge and cocktail lounge, individual radios for private rooms, 110 volt AC outlets for personal electrical appliances, blue night lights in rooms and lower berths, Venetian blinds in



*Left—The exquisite dining car on one of the luxurious Denver Zephyrs.*

*Below—Denver Zephyr Cocktail Lounge, an ultra-smart gathering place enroute.*







*Lovely dressing rooms for ladies are distinctive features of the coach accommodations on these amazingly popular Zephyrs.*



*Zephyr chair car comforts and accommodations include reclining and rotating seats and full carpeting of floors.*

the dining car and cocktail lounge, radio-phonograph reception, train hostess, valet service, etc.

Coach travel in the Denver Zephyrs is delightfully restful—the chair cars being fully carpeted, with individual reclining and rotating seats, large dressing rooms for the ladies, special luggage compartments, free pillows, economy meals (dinner 50c; breakfast 40c). Chair car passengers also have the use of both dining car and cocktail lounge. All seats in the chair cars are subject to reservation and individually assigned.

Best of all, these Denver Zephyrs are *not extra fare trains*. Flashing between the Great Lakes and the Rockies in 16 hours or less, they make it possible to “week-end 1000 miles away” with hardly a business hour lost.

## EXPOSITION FLYER

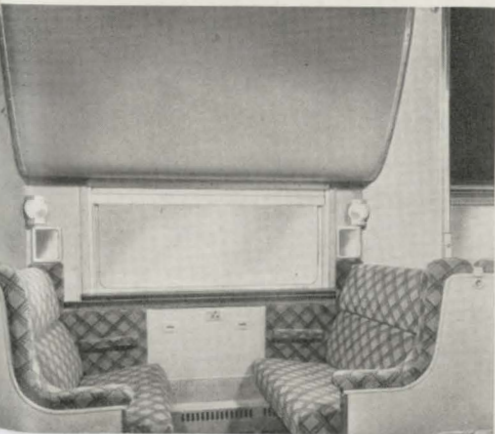
Enroute to and from California, the Exposition Flyer affords fine, fast, through service between Chicago-St. Louis and Colorado.

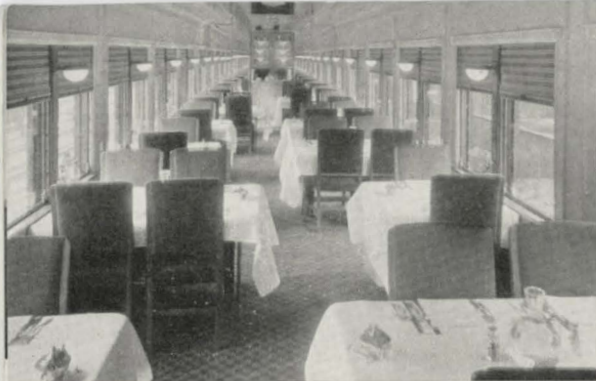
Westbound, this service affords afternoon departure from Chicago and St. Louis, and early morning arrival in Denver. Eastbound, it provides late afternoon departure from Denver, arriving Chicago the next morning and St. Louis in the early afternoon.

The Exposition Flyer provides standard and tourist sleeping cars, observation lounge-car, dining car and chair cars between Chicago and Denver; as well as through standard Pullmans and chair cars between St. Louis-Kansas City and Denver, handled on the General Pershing Zephyr between St.

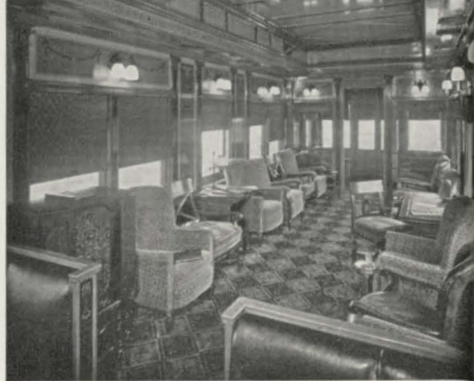
*Right—Interior of the lovely, full-length observation lounge car on the Denver Zephyrs.*

*Below—One of the Pullman sections . . . colorfully upholstered, tastefully decorated, roomy.*





Smart dining car on the Burlington's crack "Exposition Flyer" to the Colorado playgrounds.



Solarium-observation lounge car on the "Exposition Flyer," . . . a pleasant place enroute.

Louis and Kansas City. All regular equipment—air-conditioned.

The Exposition Flyer also offers economy meals for chair and tourist car passengers, hostess-nurse service, free pillows to overnight chair car passengers, radio, fountain and buffet service.

The Overland Express completes the Burlington's Colorado service.

This train, carries air conditioned equipment, and provides late evening departure both from Chicago westbound, and from Denver, eastbound.

## COLORADO CONNECTIONS

The Burlington's fleet of modern air-conditioned trains make connections at Denver with rail service through the state. To the north the "Buffalo Bill" provides overnight service (northbound Monday, Wednesday and Friday; southbound Tuesday, Thursday and Saturday) for those who desire to combine the wonders of Yellowstone with their Colorado vacation. The "Zephyr Connection," as its name implies, makes direct connection with the Denver Zephyr for Boulder and northern Colorado points. Frequent good connections to southern and western Colorado over the Colorado & Southern, D&RGW, and the Denver & Salt Lake railways.

It is a simple matter to plan a comprehensive tour embracing two, three or more of the Western national parks on one summer excursion ticket at a very low round-trip rate. Favorable routing and stopover arrangements make it possible to utilize the through service routes of the Burlington all the way.

For example, a round-trip ticket to Glacier Park enables you to go by way of Colorado at no extra fare, with a free trip from Denver to Colorado Springs and return. Only a few dollars more will take you to the Cody, Red Lodge or Gardiner gateways of Yellowstone Park. On either the going or return trip, you can be routed to stopover for a delightful tour of the Black Hills of South Dakota.

*Restful ease by day and peaceful sleep at night are yours when you travel via Burlington on your Colorado vacation.*





# BURLINGTON ESCORTED TOURS

*All-Expense "Vacations  
Without a Care"*

COOL — COLORFUL — COLORADO  
YELLOWSTONE NATIONAL PARK  
GLACIER NATIONAL PARK  
CALIFORNIA and World's Fair  
PACIFIC NORTHWEST  
ALASKA  
CANADIAN ROCKIES  
(Lake Louise—Banff)  
BLACK HILLS of South Dakota



Burlington Escorted Tours represent a sound, sensible travel plan that is not an experiment in any sense of the word. Over forty thousand guests can testify to the fact that these are planned vacations . . . carefully arranged to take in the most possible territory, in the greatest comfort and convenience, at minimum cost.

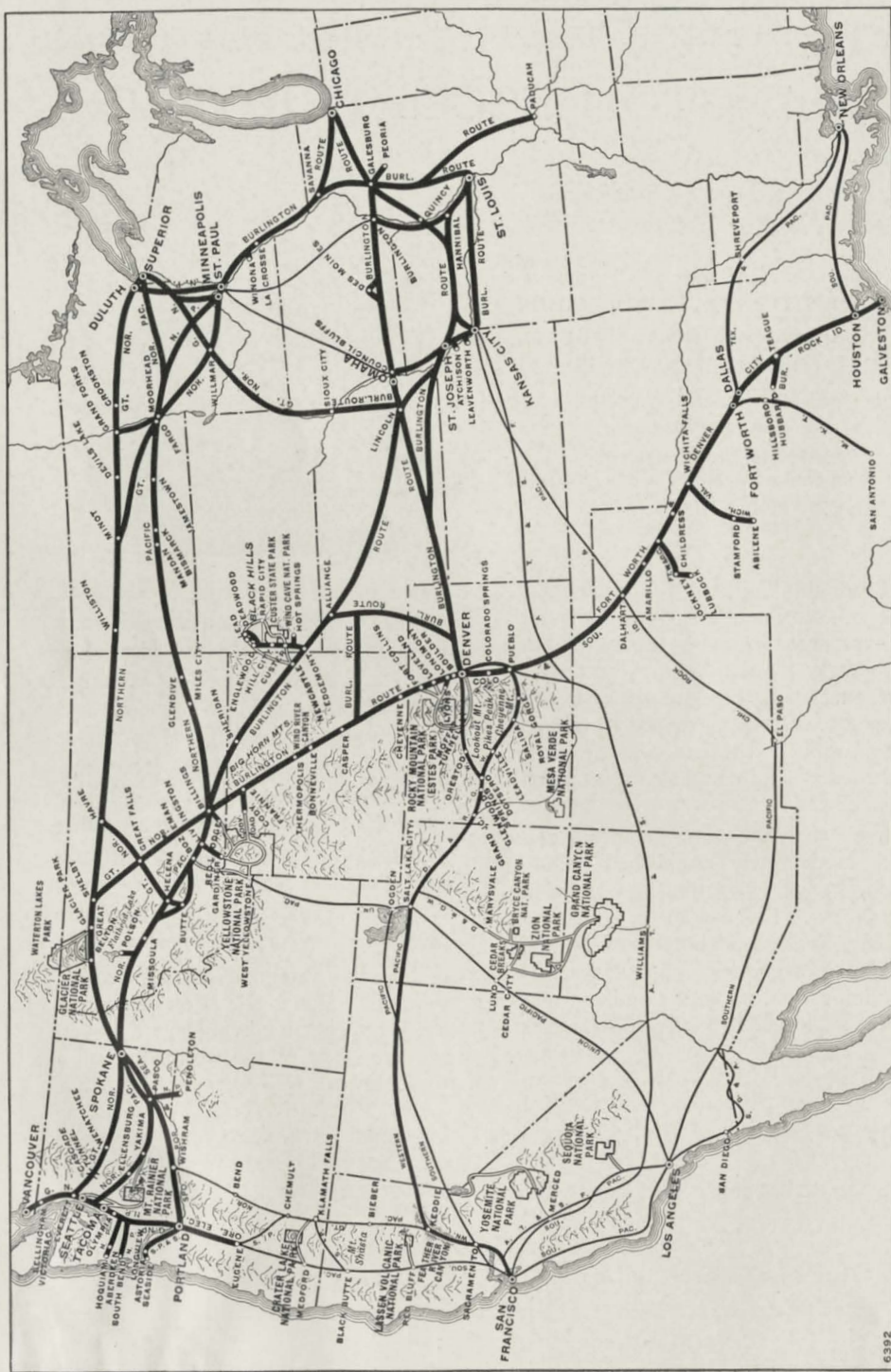
Your complete route going out and back is definitely established beforehand. In fact, everything is arranged in advance . . . Pullman space, meals and lodging at the best hotels and lodges, railroad transportation, appetizing meals in dining cars, baggage handling, and motor sightseeing trips. Our guests travel on the best trains, each carrying air-conditioned dining car and observation car, and most tours are provided with air-conditioned Pullman cars throughout.

Since everything is paid for in ad-

vance in one lump sum covering all necessary expenses, you know exactly what your vacation trip will cost before you start. A trained escort accompanies each party as business manager to look after your comfort and to relieve you of all travel problems. Every moment of your time is your own, seeing everything worth while, doing what you like with a carefree group of traveling companions imbued with the spirit of adventure, happy in the social atmosphere of a traveling house party.

This year's program includes escorted tours throughout the Wonderlands of the West, each involving only the average allowance of vacation time and a total expense well within the average means. Attractive booklets containing full details on a wide range of grand vacations will be sent free of charge to anyone, anywhere.

**R. S. CAIRD, Manager**  
**Burlington Escorted Tours, 547 W. Jackson Blvd., Chicago, Ill.**



Map of the Burlington Route to Colorado and the other great Western Wonderlands.



# Burlington Travel Bureaus

ATCHISON, KAN.	Second and Main Sts.	B. G. McCARTY, Commercial Agent
ATLANTA, GA.	518 Healey Bldg.	W. T. VARDAMAN, General Agent
BIRMINGHAM, ALA.	927 Brown-Marx Bldg.	H. B. HOWE, Commercial Agent
BOSTON, MASS.	80 Boylston St.	C. L. GAFFNEY, General Agent
BURLINGTON, IOWA	Burlington Bldg.	J. J. TRETER, Division Pass'r Agent
CHEYENNE, WYO.	Burlington-C. & S. Sta.	W. T. WALSH, General Agent
CHICAGO, ILL.	179 W. Jackson St.	S. J. OWENS, General Agent
CINCINNATI, OHIO.	505 Dixie Terminal Bldg.	J. C. BOYER, General Agent
CLEVELAND, OHIO.	1033 Terminal Tower.	ROBT. BERMAN, General Agent
CLINTON, IOWA	404 Wilson Bldg.	W. A. CARLSON, Commercial Agent
COLORADO SPRINGS, COLO.	316 Exchange Nat'l Bank Bldg.	R. T. FOX, General Agent
COUNCIL BLUFFS, IOWA.	Burlington Depot.	A. N. KOLB, Commercial Agent
DALLAS, TEXAS.	701-2 Kirby Bldg.	T. V. MURRAY, JR., General Agent
DAVENPORT, IOWA	Union Station.	W. M. BAKER, Commercial Agent
DENVER, COLO.	17th and Champa St.	F. W. JOHNSON, General Pass'r Agt.
DES MOINES, IOWA.	6th and Mulberry.	D. A. COFFEEN, City Pass'r Agent
DETROIT, MICH.	704 Transportation Bldg.	A. G. MATTHEWS, General Agent
GALESBURG, ILL.	Burlington Station.	C. I. TWYMAN, Div. Pass'r Agent
HANNIBAL, MO.	Third and Lyon Sts.	PAUL ANDERSON, Div. Pass'r Agent
HASTINGS, NEB.	Burlington Station.	D. KASTRUP, Div. Pass'r Agent
INDIANAPOLIS, IND.	910 Merchants Bank Bldg.	W. P. O'ROURKE, General Agent
JACKSONVILLE, FLA.	304 Barnett Bank Bldg.	T. H. HARRISON, General Agent
KANSAS CITY, MO.	1031 Grand Ave.	J. E. LYNN, General Agent
KEOKUK, IOWA.	Fifth and Johnson Sts.	A. C. MAXWELL, Div. Pass'r Agent
LEAVENWORTH, KAN.	Fifth and Choctaw Sts.	S. E. NIDDLINGER, Com'l Agent
LINCOLN, NEB.	11th and "P" Sts.	W. T. ALBRECHT, General Agent
LOS ANGELES, CALIF.	1010 Van Nuys Bldg.	J. L. DEE, General Agent
MILWAUKEE, WIS.	231 Wisconsin Ave.	C. J. LEYDON, General Agent
MINNEAPOLIS, MINN.	90 South 7th St.	W. R. BURGESS, General Agent
MOBILE, ALA.	203 First Natl. Bank Annex.	H. G. BRENNER, Trav. Pass'r Agent
NEW ORLEANS, LA.	210 Baronne St.	J. M. McDERMOTT, General Agent
NEW YORK, N. Y.	500 Fifth Ave.	M. J. FOX, Dist. Pass'r Agent
OAKLAND, CALIF.	512 Central Bank Bldg.	V. A. KULBERG, Commercial Agent
OKLAHOMA CITY, OKLA.	856 First Nat'l Bldg.	F. W. WERNER, Com'l Agent
OMAHA, NEB.	Farnam at 19th St.	J. W. SHARPE, General Agent
	301 South 16th St.	W. W. CRAFT, City Ticket Agent
PADUCAH, KY.	706 Citizens Savings Bank Bldg.	V. B. BUDDE, Commercial Agent
PEORIA, ILL.	301 So. Jefferson Ave.	W. A. STINGLEY, General Agent
PHILADELPHIA, PA.	215 No. American Bldg.	G. J. SMITH, General Agent
PITTSBURGH, PA.	2620 Koppers Bldg.	S. S. HANKIS, General Agent
PORTLAND, ORE.	217 American Bank Bldg.	O. G. HAGEMANN, General Agent
PUEBLO, COLO.	623 No. Main St.	G. G. CLUTTER, General Agent
QUINCY, ILL.	400 Maine St.	B. R. NEWLON, Div. Pass'r Agent
ROCK ISLAND, ILL.	C. B. & Q. Station.	C. E. CARLSON, Div. Pass'r Agent
SALT LAKE CITY, UTAH.	218 Kearns Bldg.	J. H. GREGORY, General Agent
SAN FRANCISCO, CALIF.	999 Monadnock Bldg.	M. B. BAKER, General Agent
SEATTLE, WASH.	1401 Dexter Horton Bldg.	A. R. BROWN, General Agent
SIOUX CITY, IOWA.	403 Commerce Bldg.	W. E. NICHOLSON, General Agent
SPOKANE, WASH.	1016 Old National Bank Bldg.	R. L. NICHOLS, General Agent
ST. JOSEPH, MO.	110 South Fifth St.	S. T. ABBOTT, Div. Pass'r Agent
ST. LOUIS, MO.	322 No. Broadway.	C. B. OGLE, General Agent
ST. PAUL, MINN.	226 Railroad Bldg.	BEN W. WILSON, Asst. Gen. Pass'r Agt.
	6th & Robert St.	S. L. MENTZER, General Agent
TACOMA, WASH.	216 Tacoma Bldg.	T. L. HAMMER, Commercial Agent
TULSA, OKLA.	Mid-Continent Petroleum Bldg.	A. L. MOORE, General Agent
WASHINGTON, D. C.	309 Woodward Bldg.	F. F. CRABBE, General Agent
WINNIPEG, MAN.	701 McArthur Bldg.	H. A. McMAHON, General Agent
WINSTON-SALEM, N. C.	529 Reynolds Bldg.	R. F. MORSE, Trav. Pass'r Agent

## T. P. HINCHCLIFF

General Passenger Agent

1004 Farnam Street, OMAHA, NEB.

## B. L. GARTSIDE

General Passenger Agent

547 W. Jackson Blvd., CHICAGO, ILL.

## A. COTSWORTH, JR.

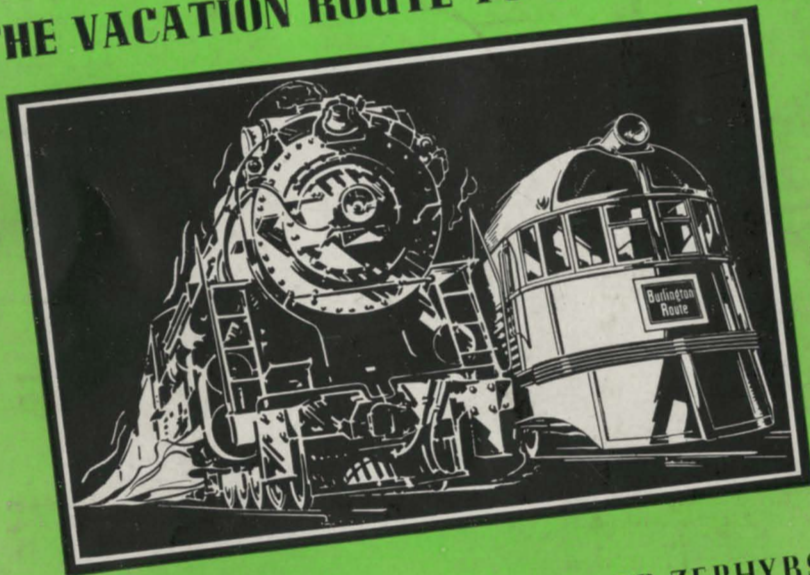
Passenger Traffic Manager

547 W. Jackson Blvd., CHICAGO, ILL.

CHICAGO BOARD OF TRADE BUILDING  
OBSERVATORY



THE VACATION ROUTE TO COLORADO



The DENVER ZEPHYRS  
EXPOSITION FLYER