

# BURLINGTON *Escorted Tours*



IN THE *Western Wonderlands*

*Operated by*

BURLINGTON ROUTE

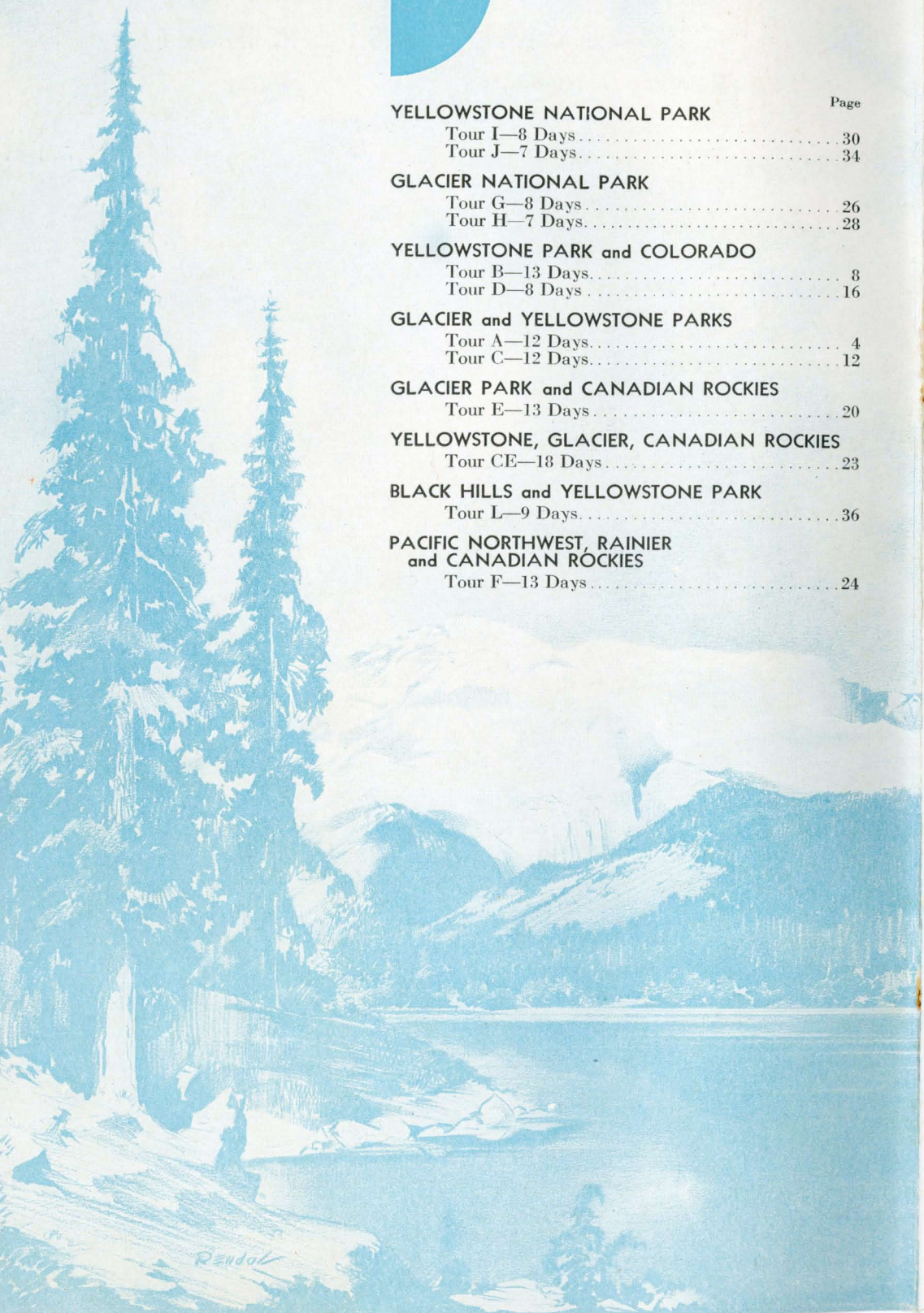
NORTHERN PACIFIC RY.



GREAT NORTHERN RY.

# INDEX

	Page
<b>YELLOWSTONE NATIONAL PARK</b>	
Tour I—8 Days .....	30
Tour J—7 Days .....	34
<b>GLACIER NATIONAL PARK</b>	
Tour G—8 Days .....	26
Tour H—7 Days .....	28
<b>YELLOWSTONE PARK and COLORADO</b>	
Tour B—13 Days .....	8
Tour D—8 Days .....	16
<b>GLACIER and YELLOWSTONE PARKS</b>	
Tour A—12 Days .....	4
Tour C—12 Days .....	12
<b>GLACIER PARK and CANADIAN ROCKIES</b>	
Tour E—13 Days .....	20
<b>YELLOWSTONE, GLACIER, CANADIAN ROCKIES</b>	
Tour CE—18 Days .....	23
<b>BLACK HILLS and YELLOWSTONE PARK</b>	
Tour L—9 Days .....	36
<b>PACIFIC NORTHWEST, RAINIER and CANADIAN ROCKIES</b>	
Tour F—13 Days .....	24



## INDEX—Continued

### CALIFORNIA and GRAND CANYON

Page

Tour O—14 Days.....44

Tour P—19 Days.....46

### CALIFORNIA-PACIFIC NORTHWEST

Tour N—14 Days.....39

### CALIFORNIA-PACIFIC NORTHWEST- CANADIAN ROCKIES

Tour NF—21 Days.....42

### ALASKA-PACIFIC NORTHWEST

Tour R—21 or 28 Days.....50

Tour T—21 Days.....52

### COMBINATION TOURS.....60-61

Tours of 14 to 26 days to the great  
Western Playgrounds.

### BARGAIN TOURS.....55-58

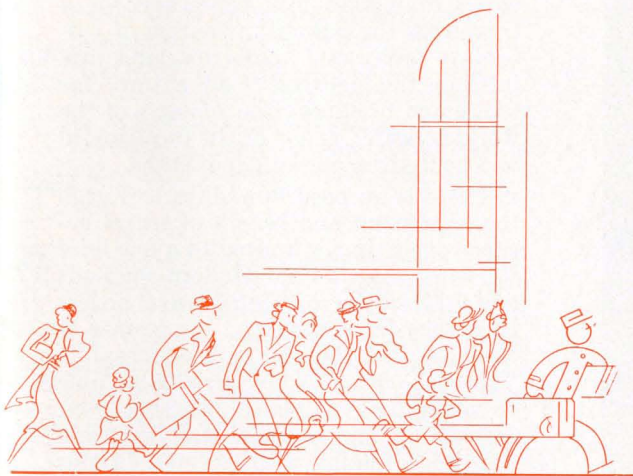
A broad range of economical, all-expense  
Escorted Tours.

### GENERAL INFORMATION.....62-63

### RESERVATION BLANK.....64

## BURLINGTON ESCORTED TOURS

SUMMER 1937



R. S. CAIRD, Manager  
547 W. Jackson Blvd., Chicago

## THE CAREFREE WAY through the NATIONAL PARKS

GLACIER NATIONAL  
YELLOWSTONE

ROCKY MOUNTAIN

CRATER LAKE

RAINIER NATIONAL

YOSEMITE NATIONAL

GRAND CANYON



COLORADO

BLACK HILLS

PACIFIC NORTHWEST

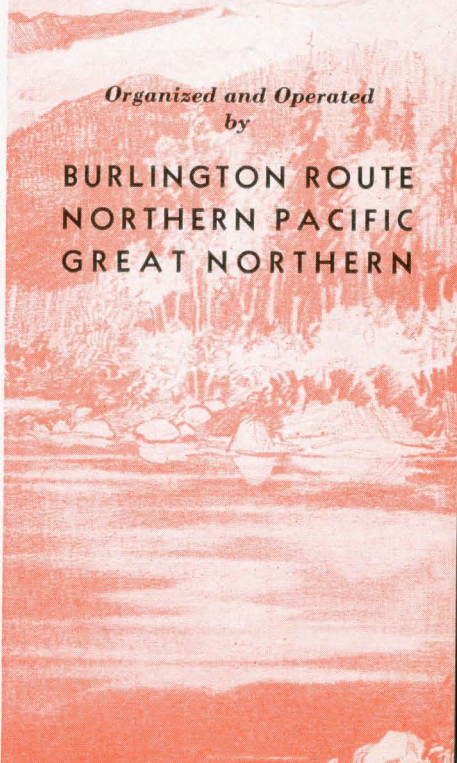
CANADIAN ROCKIES

CALIFORNIA

ALASKA

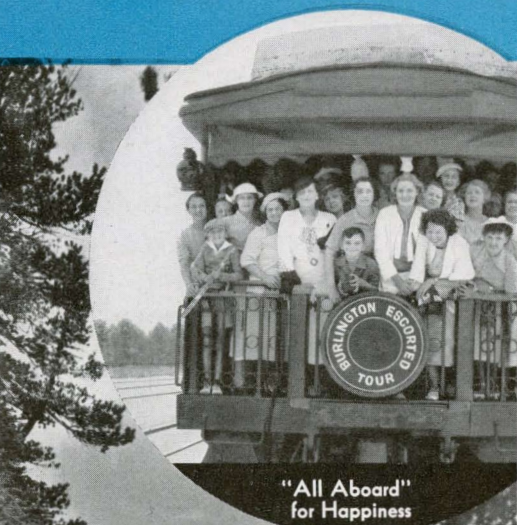
*Organized and Operated  
by*

BURLINGTON ROUTE  
NORTHERN PACIFIC  
GREAT NORTHERN



# Literally Hundreds

## OF DELIGHTFUL TRIPS



### THE MODERN ROAD TO ROMANCE

"Travel. Go somewhere worth while. Stand before the mighty splendor of far-flung mountains; hear the music of deep forests; share with Nature her secrets of beauty and grandeur; welcome the strange faces and fortunes of distant cities; adventure in new friendships, in new ideas and interesting companions.

*"This is the modern road to romance.*

"There is no privilege comparable to intelligent travel. It is the master experience. Travel refreshes the intellect, thrills the heart, gratifies longing eyes and imparts to life new reasons for living. It hangs a thousand pictures of the living world upon the romantic walls of memory. Its lure is forever fresh, forever romantic, often adventurous beyond our dreams."

To climb aboard a splendid train and cut loose from all the dull duties of the world of work-a-day, to escape for a time from the humdrum routine of yesterday, today and tomorrow, and fare forth on the highroad of adventure "for to see and to admire the wonders of the world so wide" is one of the most joyful and soul-satisfying of experiences.

There is no need nowadays to forego the enjoyment and benefit of travel because one's time is limited to a few brief weeks or even days. Modern methods and practices have affected travel no less than they have enhanced the science of business and the art of housekeeping. There is no need to devote valuable time to mapping out plans, charting your course, looking up costs, studying train schedules, fussing with tickets. Just as a successful business man employs skilled men and women to write his letters, keep his accounts, and experts to offer him counsel, so today's long-distance traveler may look to Burlington Es-

Mt. Jackson in Glacier National Park

corted Tours to relieve him or her of all the perplexities, technicalities, and bothersome details attending a trip or tour. Vacations are made happy by foresight. Burlington Escorted Tours place travel experience at your disposal.

This booklet treats with plans for a variety of personally-conducted, All-Expense Tours to and through the western mountain world, involving only the average allowance of vacation time and a total expense well within the average means.

The complete route going out and coming back is definitely established beforehand—in fact everything is arranged in advance: Pullman space, meals and lodging at the best hotels and lodges, railroad transportation, appetizing meals in dining cars, sight-seeing trips by motor. We travel in special Pullmans attached to the best trains, each carrying air-conditioned dining car and observation car, and most tours are provided with air-conditioned Pullman cars throughout.

Everything is paid for in advance in a lump sum covering all necessary expenses attending strictly first-class travel. A travel expert accompanies each party as business manager to look after everything and relieve guests of all travel details. These are "*Vacations without a Care*" on which there is nothing for the guests to do but have a good time, seeing everything in sight, doing everything worth doing, with a carefree group of friends and traveling companions, out for a holiday, imbued with the spirit of adventure, happy in the social atmosphere of a traveling house party.

\* \* \*

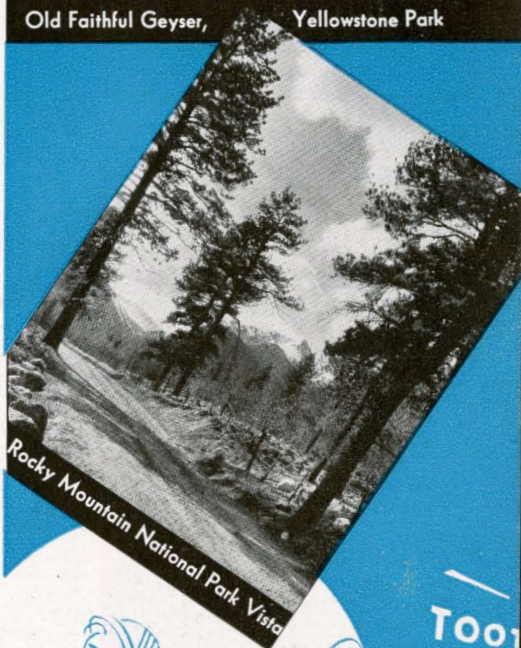
Our Escorted Tours represent a sound, sensible travel plan that is not an experiment in any sense. You will enjoy yourself—have a good time. You travel without any responsibilities, you see the most in the best way with no waste of time; for a lower total cost than if you undertook to make the same trip independently.

Come join us this summer for a truly wonderful vacation. We'll show you the West as you've never seen it before, without a care in the world as you go.



Old Faithful Geyser,

Yellowstone Park



Rocky Mountain National Park Vista



# Glacier and Yellowstone National Parks

## CONDENSED ITINERARY

Lv. Chicago.....Sun.  
Lv. St. Louis.....Sun.  
Ar. Glacier Park.....Tue.  
Five Days in Glacier Park.  
Ar. Cody.....Sun.  
Complete Tour of Yellowstone.  
Lv. Gardiner.....Wed.  
Ar. Chicago.....Fri.  
Ar. St. Louis.....Fri.

## LEAVING DATES

A-1.....June 20  
A-2.....June 27  
A-3.....July 4  
A-4.....July 11  
A-5.....July 18  
A-6.....July 25  
A-7.....Aug. 1  
A-8.....Aug. 8  
A-9.....Aug. 15  
A-10.....Aug. 22

## TOUR A—12 DAYS

### Air-Conditioned Equipment Throughout

*Two glorious tours in one . . . Yellowstone's famed "While Magic" and the rugged grandeur of Glacier Park.*

Lv. CHICAGO.....11.15 PM Burlington.....Sunday  
(Union Station) (C.S.T.)

Lv. ST. LOUIS.....2.00 PM Burlington.....Sunday

Groups from both cities join at St. Paul and proceed westward together aboard the crack air-conditioned "Empire Builder."

Lv. ST. PAUL.....8.50 AM Great Northern....Monday

Lv. MINNEAPOLIS..9.25 AM Great Northern....Monday

Sightseeing from the car windows as we speed through Minnesota's lakes and woods, and the great wheat fields of the Dakotas.

Ar. GLACIER PARK.12.40 PM Great Northern....Tuesday

## THRILLING DAYS IN GLACIER NATIONAL PARK

Blackfeet Indians in full regalia greet us at the station and escort us to the Glacier Park Hotel with tom-toms and tribal chants. After lunch, we motor up to Two Medicine Lake and enjoy a launch ride to the far end and a short hike to lovely Twin Falls. A pleasant, easy introduction to the wonders of Glacier Park. In the evening, back at our great hotel again, the Indians give us a real treat with their ceremonial dances and primitive customs.

Wednesday we go adventuring by motor over the new scenic highway around Chief Mountain, clear up into Canada . . . with glorious mountain scenery all the way. Entering Waterton Lakes Park we round out a beautiful auto trip at the picturesque Prince of Wales Hotel, where we spend the night in rooms with bath. The afternoon is devoted to a launch ride down Waterton Lake to Goathaunt Camp, over the U.S. border.

Thursday morning finds us returning over the new highway to colorful Many Glacier Hotel, in a perfect mountain setting on Swiftcurrent Lake. No more delightful place could be found in which to spend two glorious days. You can hike, fish the lakes and streams, ride on the lake, or take thrilling saddle trips to nearby fascinating points such as Iceberg, Ptarmigan or Cracker Lakes.

Saturday you will long remember as "Thrill-a-minute day." We motor out along the shores of the St. Mary Lakes, walled up on the far side by a staggering array of mighty peaks, to Going-to-the-Sun. Then over the breath-taking new highway that tops the rugged grandeur of the Continental Divide at Logan Pass, and down the West slope of the Rockies to gem-like Lake McDonald. A pleasant luncheon and we proceed along the lake to Belton and our train, bound for more adventures.

Lv. BELTON . . . . . 4.45 PM Great Northern . . . . Saturday  
 Ar. CODY . . . . . 11.00 AM Burlington . . . . . Sunday

## MAGIC YELLOWSTONE AND THE CODY ROAD

Now for Yellowstone's wonderland! After luncheon at the excellent Cody Inn, away we go over the Cody Road . . . 80 miles of the most spectacular scenery you can imagine, and as much a part of Yellowstone as the park itself. We pass Buffalo Bill's statue, plunge through the towering Shoshone Canyon, stop at the tremendous Shoshone Dam, skirt the reservoir, skim through the heart of Dude Ranch country and up over Sylvan Pass in the Absaroka mountains. Dropping down to Yellowstone River we soon pull up at Grand Canyon Hotel, our first overnight stop, still marveling at our trip.

Monday is a day for exploring the Grand Canyon and Great Fall. Words cannot describe the beauty of this scene with its lavish coloring, deep gorge and mighty cascade. After lunch we wheel off via Virginia Cascades to the weird spectacle of Norris Geyser Basin, then to Excelsior Geyser Basin and along the Firehole River to the most famous of all geysers, Old Faithful. Its namesake Inn nearby is our comfortable home until Wednesday.

The basin here contains more geysers, hot pools and other hot water phenomena than any similar region in the world. How you'll enjoy your memorable day and a half here! U. S. Rangers will help you see this wonder spot, and add to your enjoyment by explaining their significance.

Wednesday we motor over the Continental Divide, for the second time on our tour, to Yellowstone Lake and along the wooded shores through Hayden Valley around to Grand Canyon. In the afternoon we climb up over the thrilling Dunraven Pass, skimming down pass Tower Falls to Mammoth Hot Springs before leaving the park via the Gardiner gateway.

Lv. GARDINER . . . . 7.15 PM Northern Pacific. Wednesday

Homeward on the famous "North Coast Limited," with the last stop at Mandan, North Dakota, for unique entertainment by the Sioux Indians.

Ar. MINNEAPOLIS . . 10.12 PM Northern Pacific . . . Thursday

Ar. ST. PAUL . . . . . 10.45 PM Northern Pacific . . . Thursday

Ar. CHICAGO . . . . . 8.45 AM Burlington . . . . . Friday

Ar. ST. LOUIS . . . . . 5.10 PM *Your Choice* . . . . . Friday

## COST OF COMPLETE TOUR

Tour includes all necessary expenses such as Pullman, Hotels (Two to a room, without bath), all Meals, and Auto Trips as shown in itinerary.

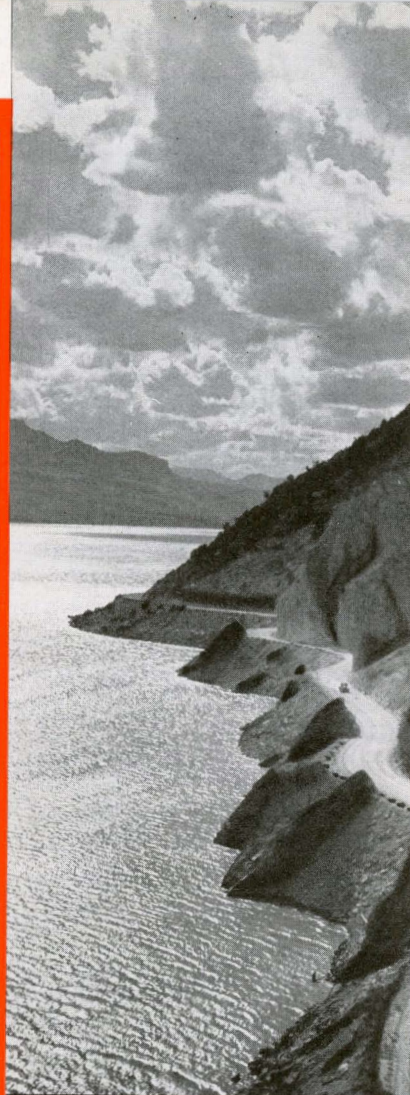
Costs "without rail ticket" are for the benefit of passengers coming from the East or South with through rail tickets.

	From CHICAGO		†From ST. LOUIS	
	Without Railroad Ticket	With Railroad Ticket	Without Railroad Ticket	With Railroad Ticket
Two in Lower Berth (each)	\$122.15	\$172.50	\$123.75	\$176.00
One in Lower Berth . . . . .	133.30	183.65	135.25	187.50
One in Upper Berth . . . . .	128.85	179.20	130.70	182.95

†No Meals or Pullman included between Chicago and St. Louis.

ADDITIONAL (APPROXIMATE) FOR SPECIAL HOTEL ACCOMMODATIONS:

Without Bath—Single Room \$5.50. With Bath—Double Room (per person) \$11.50, Single Room \$17.00.



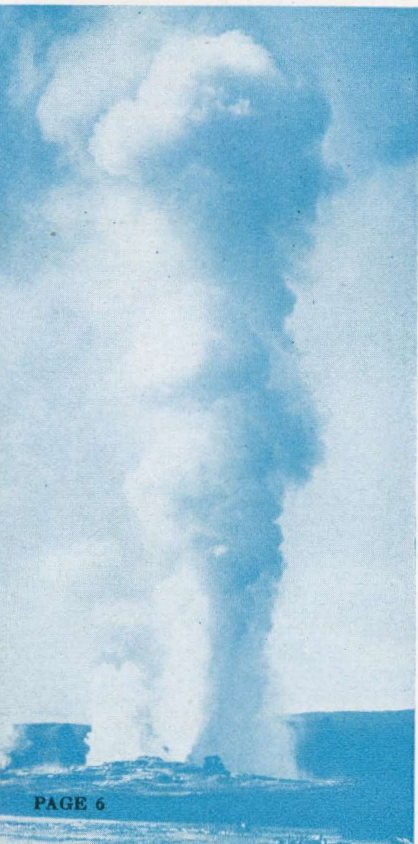
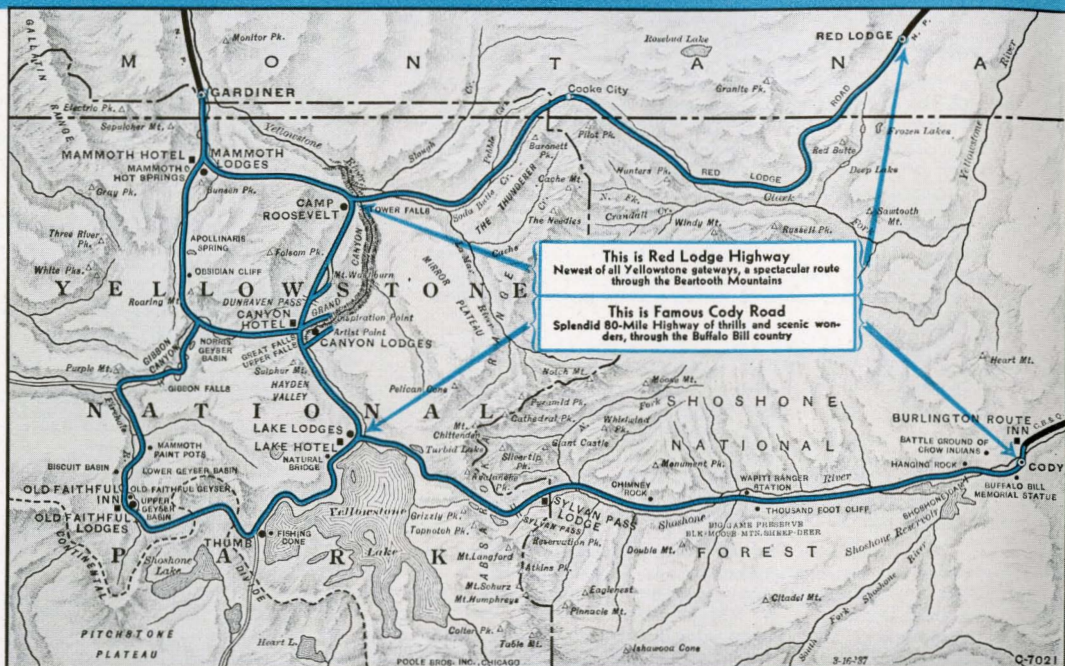
Along the Cody Road to Yellowstone



From Logan Pass Highway, Glacier Park

# Yellowstone National Park

## LAND OF "WHITE MAGIC"

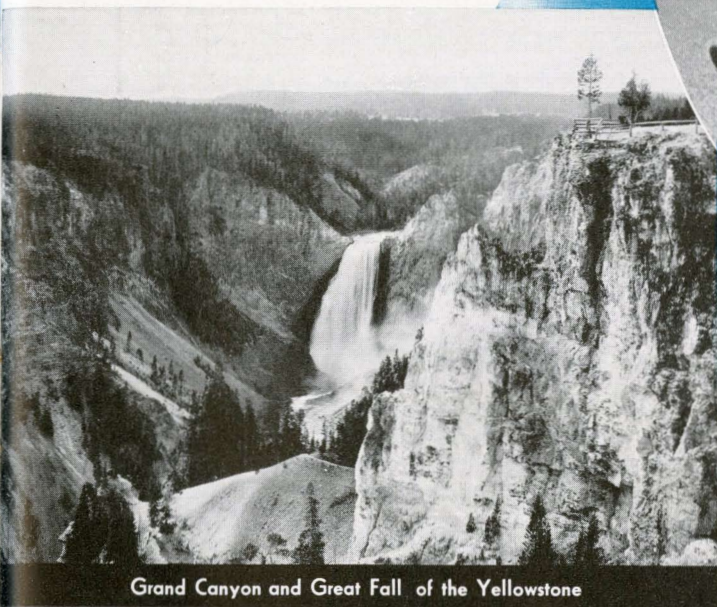


It is hard to avoid envying that mortal who stands for the first time fifty yards away from a certain unimpressive limestone cone . . . half expectantly and half skeptically "waiting for something to happen."

What a privilege is his. What a mighty thrill when, after a few preliminary hisses and sputters, the impossible happens and a million gallons of white-hot water bursts furiously forth in a roaring jet that mounts higher and higher until it reaches 150 feet as Old Faithful, headliner of the Yellowstone circus . . . pampered pet of geyserdom, performs again its spectacular stunt . . . "on time" to the split second . . . clocking off the 65-minute interval today, as it has for a thousand years.

You will hear all kinds of explanations to account for the geysers and the other queer, crazy phenomena which mark Yellowstone National Park as a place apart from all other earthly areas. But none of the explanations sound very convincing. The theory that sounds plausible as to the Old Faithful type does not account satisfactorily for the hundreds of lesser geysers that erupt incessantly; nor for the interminable plop-plopping of the multi-colored "paint pots" whose mushy surfaces are agitated by countless tiny explosions.

What makes the "Black Growler" growl? Here



Grand Canyon and Great Fall of the Yellowstone

is a lovely pool whose water looks blue, while over there is one that looks decidedly green. Here is a spring of boiling hot water and only inches away from it a spring that is ice cold. What causes that? Try to figure out the technicalities of the famed Fishing Cone, Biscuit Basin, the pink steam rising from Amethyst Pool . . . then give it all up and devote yourself to sheer admiration of the consummate artistry with which Nature, working with hot lime-bearing water and a microscopic plant life organism known as algae, built up the delicately fluted and marvelously tinted terraces which cover many acres in the vicinity of Mammoth Hot Springs.

Finally go and stand at the edge of the Grand Canyon of the Yellowstone and see a sight that taxes your visual capacity. Try to comprehend this grotesque, colossal masterpiece which the educated waters of this strange land have wrought as if to show mere man what it can do when it quits playing entertaining tricks and really gets down to business. Here is scenic splendor. Here is color strewn about and spilled down a thousand-foot escarpment in the most extravagant use of yellow that is to be found anywhere in nature. The Yellowstone Canyon is half a mile wide, more than 15 miles long and 1200 feet deep in many places. At its head is the majestic Great Fall of the Yellowstone . . . a mighty, snow-white cascade that plunges over a heroic precipice as WATER with a final flourish adds the perfect touch to complete one of the earth's sublimest spectacles.



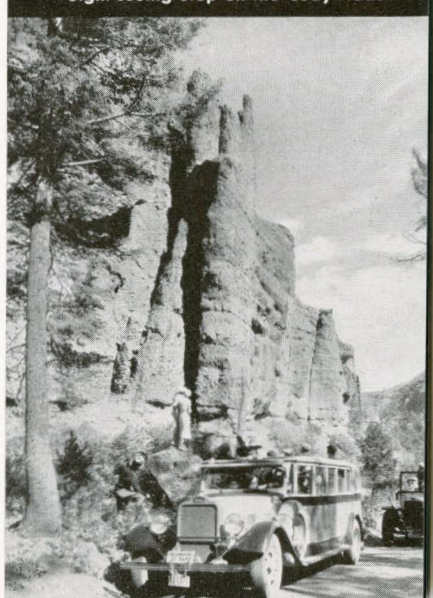
Roadside Beggars

#### ACCOMMODATIONS IN YELLOWSTONE

There are two types of accommodations in Yellowstone Park . . . hotels and lodges. The hotels are great resort hostleries, fully modern in appointments, with every service convenience, and especially attractive in their architecture. A distinctive feature about the Yellowstone hotels is that they are always situated right in the center of things, close to the main attractions of the vicinity. Dancing every evening except Sunday at both hotels and lodges.

The lodges are miniature villages of rustic buildings embracing community recreation halls, dining rooms where all have their meals "family style," postoffice, etc. . . . surrounded by the groups of lodges (without bath) which serve as sleeping quarters.

#### Sight-seeing Stop on the Cody Road



# Yellowstone and Rocky Mountain Parks

## CONDENSED ITINERARY

Lv. Chicago.....	Sun.
Lv. St. Louis.....	Sun.
Ar. Gardiner.....	Tue.
Five Days in Yellowstone.	
Lv. Cody.....	Sat.
Ar. Loveland.....	Sun.
Four Days in Rocky Mtn. Pk.	
Lv. Denver.....	Thur.
Two Days in Colorado Springs.	
Ar. Chicago.....	Sat.
Ar. St. Louis.....	Sat.

## LEAVING DATES

B-1.....	June 27
B-2.....	July 4
B-3.....	July 11
B-4.....	July 18
B-5.....	July 25
B-6.....	Aug. 1
B-7.....	Aug. 8
B-8.....	Aug. 15
B-9.....	Aug. 22
B-10.....	Aug. 29

## TOUR B — 13 DAYS

### Air-Conditioned Equipment Throughout

*Three great playgrounds . . . Yellowstone's Geysers and Cody Road, Rocky Mountain National Park, and Colorado Springs-Pikes Peak region.*

Lv. CHICAGO.....	11.00 PM	Burlington.....	Sunday
(Union Station) (C.S.T.)			
Lv. ST. LOUIS.....	2.00 PM	Burlington.....	Sunday
Groups from both cities join at St. Paul.			
Lv. ST. PAUL.....	8.35 AM	Northern Pacific...	Monday
Lv. MINNEAPOLIS...	9.10 AM	Northern Pacific...	Monday
Across Minnesota and North Dakota on the fine "North Coast Limited."			
Ar. GARDINER.....	11.00 AM	Northern Pacific...	Tuesday

## FIVE FULL DAYS IN YELLOWSTONE

Transferring to our waiting motors we make our first stop at Mammoth Hot Springs for luncheon. Here we begin to realize why Yellowstone is called a "Wonderland"—acres of hot springs all about us spill over gorgeously tinted rock terraces built up by untold centuries of mineral deposits.

Continuing by motor—stopping to view the terraces—we follow a wonderful road past glistening Obsidian Cliff, Roaring Mountain and the Virginia Cascades to the famous Grand Canyon of the Yellowstone, where we stop for overnight and a glorious view of the Canyon and Great Fall.

Wednesday is a mighty busy and interesting day. The morning is devoted to sightseeing excursions about the glorious canyon, and after luncheon we motor to the Norris Geyser Basin, then to Upper Geyser Basin, home of Old Faithful and hundreds of other steaming vagaries of Nature. With rooms assigned at Old Faithful Inn or Lodge, you are free to roam this great region to your heart's content.

During our stay here, U. S. Rangers conduct frequent hikes, give nature talks in the evening and help to make us feel at home. Every night in the park, of course, brings dancing and other diversions.

Thursday afternoon finds us motoring over the Continental Divide and along Yellowstone Lake to the charming Lake Hotel (or Lodge if you prefer) for overnight. Friday again finds us drawing up at Grand Canyon with 24 hours divided between a side trip over Dunraven Pass to Tower Falls and exploring the Great Canyon, seeing the bear feeding pens, and visiting beauty spots in the vicinity.

Saturday afternoon we motor eleven miles along the Yellowstone River to pick up the famous Cody Road. Crossing the Absaroka Range through Sylvan Pass, we wind down through wonderful ranching country, through the six-mile gorge of the Shoshone River to the town of Cody, Wyoming.

Lv. CODY.....	7.45 PM	Burlington.....	Saturday
On our way South to new adventures.			
Ar. LOVELAND.....	11.00 AM	Colo. & Southern...	Sunday

## COST OF COMPLETE TOUR

Tour includes all necessary expenses such as Pullman, \*Hotels (Two to a room), all Meals, and Auto Trips as shown in itinerary.

Costs "without rail ticket" are for the benefit of passengers coming from the East or South with through rail tickets.	From CHICAGO		From ST. LOUIS	
	Without Railroad Ticket	With Railroad Ticket	Without Railroad Ticket	With Railroad Ticket
Two in Lower Berth (each)	\$129.13	\$176.08	\$130.18	\$179.03
One in Lower Berth.....	138.35	185.30	139.20	188.05
One in Upper Berth.....	134.70	181.65	135.60	184.45

\*Via Lodges in Yellowstone, \$2.00 less.

ADDITIONAL (APPROXIMATE) FOR SPECIAL HOTEL ACCOMMODATIONS:

Without Bath—Single Room \$7.00. With Bath—Double Room (per person) \$7.00, Single Room \$12.50.

## FOUR DAYS IN ROCKY MOUNTAIN PARK

Leaving Loveland, we motor through the Big Thompson Canyon to Estes Park Village. Sunday afternoon and all day Monday at Estes Park Chalets . . . a charming place. Here are horses for riding, hundreds of trails in all directions, fishing for those who enjoy it, and magnificent scenery for all.

Tuesday finds us traveling over one of the most thrilling mountain highways in the world. Leaving the Chalets we soon come upon the new Trail Ridge Road that gradually sweeps us up above timberline to Fall River Pass at an elevation of 11,800 feet. From this wind-swept height we can see a hundred miles in any direction, across the glorious broken skyline of the Colorado Rockies.

Descending, we sweep around to Grand Lake Lodge, a comfortable cluster of bungalow cabins grouped around a great rustic lounge. Here we spend the afternoon and night.

Continuing Wednesday we come to the West Portal of the famous Moffat Tunnel, then climb up and over Berthoud Pass. Soon we enter Clear Creek Canyon and pause for luncheon at Idaho Springs. Before rounding out our trip, we stop at Lookout Mountain to see Buffalo Bill's grave.

Before going to the Cosmopolitan Hotel (rooms with bath) we enjoy a sightseeing tour of the city's charming parks, lakes and boulevards . . . helping us to understand why Denver is called the "Queen of the Rockies".

Lv. DENVER . . . . . 8.35 AM D. & R.G.W. . . . . Thursday

Ar. COLO. SPRINGS.. 10.05 AM D. & R.G.W. . . . . Thursday

If for no other reason, this phase of our trip is noteworthy because we stop at the famous Broadmoor in Colorado Springs, one of the most beautiful and most luxurious hotels in the West. Rooms with bath are provided for us overnight. Another highlight is the motor trip to the summit of Pikes Peak, including the Garden of the Gods, South Cheyenne Canyon, and other scenic highlights.

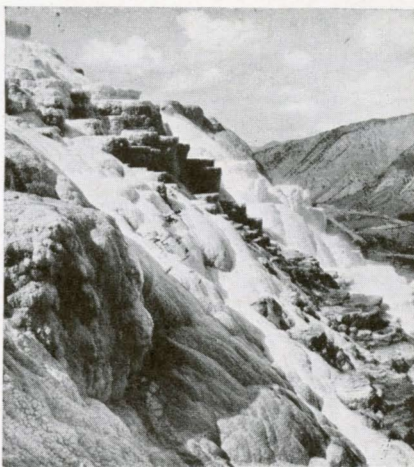
Lv. COLO. SPRINGS.. 5.20 PM D. & R.G.W. . . . . Friday

Lv. DENVER . . . . . 8.00 PM Burlington . . . . . Friday

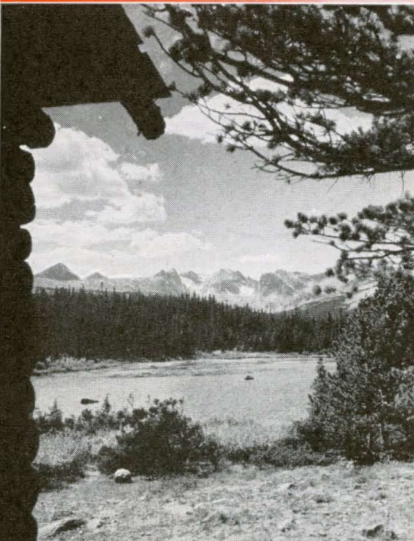
Ar. OMAHA . . . . . 7.50 AM Burlington . . . . . Saturday

Ar. CHICAGO . . . . . 7.50 PM Burlington . . . . . Saturday

Ar. ST. LOUIS . . . . . 9.15 PM Burlington . . . . . Saturday



Mammoth Hot Springs, Yellowstone



The Snowy Range—Colorado Rockies

# Rocky Mountain

## NATIONAL (ESTES) PARK

It would be hard to overstate the scenic significance of this famous mountain playground . . . impossible to overestimate the mighty splendor of the far-flung mountains over and through which you wheel in balloon-tire luxury. Rocky Mountain National Park, so named because its scenery is so nobly typical of the higher Rockies, is by all odds the most accessible of all our mountain playgrounds. It is literally true that in this great wilderness of tangled peaks, brawling streams, splendid highways and trails in every direction, there is "something for everyone" . . . and health and happiness for all.

Leaving Loveland in the morning we spin along at 35, the great Front Range of the Rockies looming up ahead, growing higher and vastly higher every minute. A brief time "roller coasting" up and down over the foothills brings us to the Big Thompson River whose crooked course we follow through a 16-mile can-

yon that ends in a broad, bowl-shaped valley thoroughly hemmed-in by a mountain skyline dominated by the 14,255-foot crown of Longs Peak. Right in the center of this charming valley . . . or "park," as it is known in the Western uplands . . . is the picturesque little village of Estes Park.

We roll up to the Estes Park Chalets where any question that may have been lurking in your mind about the quality of accommodations which this mountain country offers is answered in a way which leaves you joyfully satisfied for all time. Pleasant sleeping rooms are tastefully furnished, the lounge room of baronial spaciousness and bright with color is made inviting by a double fireplace of heroic size; a genial atmosphere of open cordiality pervades the place. And what a superb view there is from every side of this charming resort!

The next part of our route is over the new Trail Ridge Road . . . the highest continuous mountain road in the world. This splendid skyline boulevard, opened to traffic only within the past few years, gradually ascends the east slope of the Continental Divide, follows the *top* of the peaks for mile after thrilling mile, to wind-swept Fall River Pass!

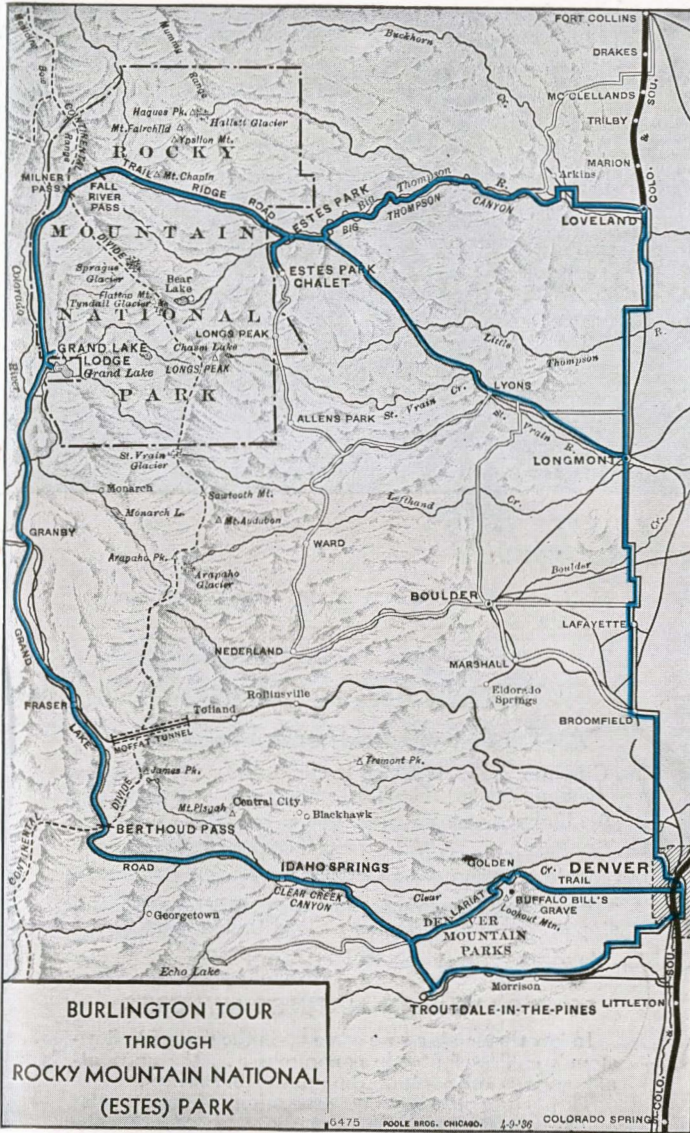
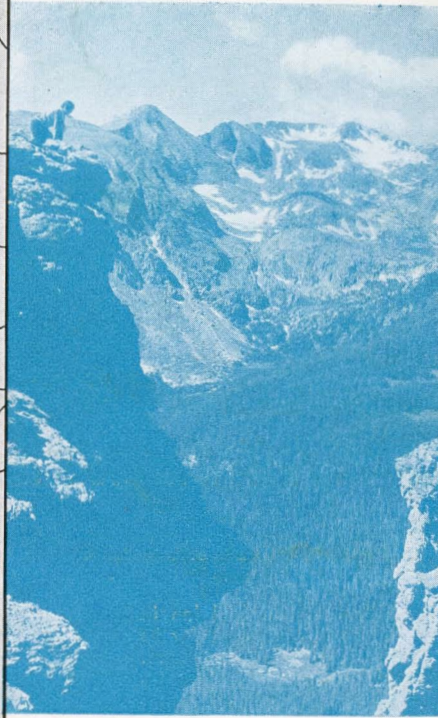
To speak too glowingly of this phase of the motor trip is virtually impossible. It is a ride of breath-taking superlatives, with magnificent vistas of the valley below and thrilling views of many a snow-crowned peak constantly before your eyes. Mountain panoramas of the first order of sublimity, including the beautiful Never-Summer Range, the Medicine Bow Range, majestic cloud-crowned Longs Peak and the grand southward sweep of the Rockies as far as Pikes Peak . . . a parade of snow-capped giants fading into the hazy beyond . . . contribute their beauty and inspiration.

From this point the road makes a rapid, winding descent to the Colorado River, which here flows through a wooded can-



Notch Top Peak in Rocky Mountain National Park

**Breathtaking View on the famous Trail Ridge Road**



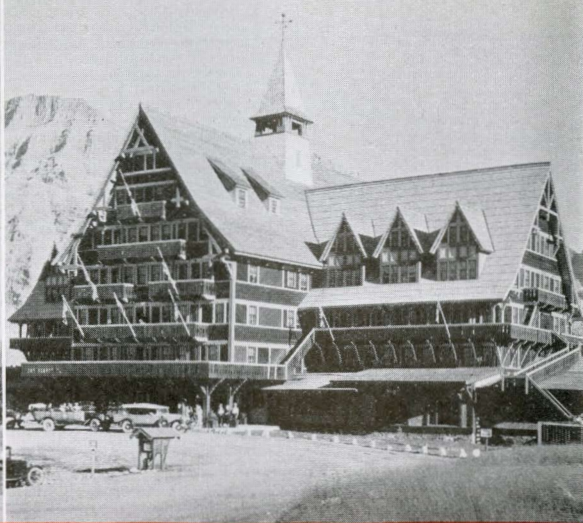
yon walled-in by towering peaks, and, following the picturesque bends in the stream shortly pulls up at Grand Lake where we find a different and delightful arrangement of accommodations . . . a miniature village of snug little sleeping cabins surrounding a big main lodge where appetizing meals are served in a spacious dining room. Evening hours flee too rapidly both for the dancers and those who elect just to group themselves around a unique type of open campfire blazing away in the middle of the big lounge room. Close by is Grand Lake, a gem-like body of water shadowed by

forested mountains. Here is the highest yacht anchorage in the world, the scene of an annual colorful regatta which you may have the pleasure of witnessing.

Continuing on the morrow, the road again crosses the Continental Divide . . . this time from the Pacific to the Atlantic side—through the territory made famous

by the construction of the great Moffat Tunnel through James Peak, through that colossal crevasse known as Berthoud Pass, and continues through a series of kaleidoscopic scenic effects, down the Canyon of Clear Creek in the midst of Colorado's historic gold mining country.

After lunch at the Placer Inn, the motors take off again, bowling along smoothly over the celebrated boulevard which leads eastwardly through Denver's famous chain of mountain parks and Pike National Forest, Lookout Mountain, Buffalo Bill's grave, the Lariat Trail, and so to Denver in the late afternoon.



## Yellowstone and Glacier NATIONAL PARKS

*Left*—Old Faithful Inn in Yellowstone, noted for its Hospitality and Charm.

*Right*—Prince of Wales Hotel, the Million Dollar Resort on Waterton Lake.

### TOUR C — 12 DAYS

#### Air-Conditioned Equipment Throughout

LV. CHICAGO . . . . . 11.00 PM Burlington . . . . . Tuesday  
(Union Station) (C.S.T.)

LV. ST. LOUIS on any train convenient to join us at Chicago.

LV. ST. PAUL . . . . . 8.35 AM Northern Pacific. Wednesday

LV. MINNEAPOLIS . . 9.10 AM Northern Pacific. Wednesday

Westward in comfort and luxury, with a delightful stop at Mandan, N. D., for a Sioux Indian "pow wow."

AR. GARDINER . . . . 11.00 AM Northern Pacific. Thursday

#### FOUR DAYS AMID NATURE'S MYSTERIES

In less than an hour we come upon the first of Yellowstone's endless fantastic panoramas . . . the uncountable springs and pools of Mammoth Hot Springs.

Through a bewildering procession of spectacular oddities, every one offering a separate treat, to the Upper Geyser Basin. Here we are introduced to Old Faithful, spouting off every hour just like clockwork, and explore scores of other curious hot water eruptions.

Friday morning we hike around the Upper Geyser Basin trying to keep up with the geysers as they erupt—a popular sport at Old Faithful. The afternoon finds us motoring over the Continental Divide (twice!), skirting Yellowstone Lake to the Lake Hotel, reopened this year for a delightful overnight stop. Next morning we motor on to what many consider the most splendid scenic attraction in the Park—Yellowstone Canyon and the Great Fall—twice as high as Niagara, with an afternoon motor trip over wind-swept Dunraven Pass to Tower Falls. Overnight at Grand Canyon Hotel—or lodges if you prefer.

After luncheon Sunday we begin that never-to-be-forgotten trip that starts at Yellowstone Lake . . . over the famous Cody Road to Cody, Wyoming—80 miles of mountains, virgin timber and gigantic works of nature.

(This year, for the first time, the new and spectacular Red Lodge Highway is offered as an optional route from the park at small additional cost. This new highway leaves the Park at Cooke City entrance and follows the very peaks of the Beartooth Mountains for mile after thrilling mile before connecting with the Northern Pacific at Red Lodge. Additional cost \$6.50.)

Lv. CODY..... 7.40 PM Burlington.....Sunday  
Ar. GLACIER PARK. 12.40 PM Great Northern....Monday

### A RUGGED MOUNTAINLAND SUPREME

Picturesque Indians in war bonnets greet us on arrival at the tremendous Glacier Park Hotel. Our afternoon program includes an auto trip to Two Medicine Lake. Back at the hotel in the evening we rub elbows with the braves, who put on a real show.

Over the Blackfeet Highway Tuesday morning to Waterton Lake National Park in Canada... the Prince of Wales Hotel for an overnight stop in rooms with bath. An interesting launch trip is included in our afternoon program, down Waterton Lake to Goathaunt Camp.

Leaving Wednesday morning we motor down to the Many Glacier Hotel on Swiftcurrent Lake in one of the most beautiful alpine settings imaginable. The two days we spend here afford a wonderful opportunity for sport in the mountain wilderness all about.

Reluctantly, we motor away on Friday morning to Going-to-the-Sun, then on over the wonderful new auto highway that negotiates Logan Pass, across the Continental Divide with an unbroken view of wild mountain masses all about us, and leads us down the Western slope to the Lake McDonald Hotel. A leisurely lunch, then down to Belton to our train.

Lv. BELTON..... 4.45 PM Great Northern....Friday

Eastward through the Dakota wheat country and Minnesota, in air-conditioned luxury.

Ar. MINNEAPOLIS.. 10.00 PM Great Northern...Saturday

Ar. ST. PAUL..... 10.30 PM Great Northern...Saturday

Ar. CHICAGO..... 8.40 AM Burlington.....Sunday

Ar. ST. LOUIS..... 5.10 PM Your Choice.....Sunday

### CONDENSED ITINERARY

Lv. Chicago.....Tue.

Lv. St. Louis.....Tue.

Ar. Gardiner.....Thur.

Four Days in Yellowstone.

Lv. Cody.....Sun.

Ar. Glacier Park.....Mon.

Five Days in Glacier Park.

Lv. Belton.....Fri.

Ar. Chicago.....Sun.

Ar. St. Louis.....Sun.

### COST OF COMPLETE TOUR

Tour includes all necessary expenses such as Pullman, \*Hotels (Two to a room, without bath), all Meals, and Auto Trips as shown in itinerary.

Costs "without rail ticket" are for the benefit of passengers coming from the East or South with through rail tickets.

	From CHICAGO		†From ST. LOUIS	
	Without Railroad Ticket	With Railroad Ticket	Without Railroad Ticket	With Railroad Ticket
Two in Lower Berth (each)	\$122.15	\$172.50	\$122.15	\$174.40
One in Lower Berth.....	133.30	183.65	133.30	185.55
One in Upper Berth.....	128.85	179.20	128.35	180.60

\*Via Lodges in Yellowstone, \$1.00 less.

†No Meals or Pullman included between St. Louis and Chicago. ADDITIONAL (APPROXIMATE) FOR SPECIAL HOTEL ACCOMMODATIONS:

Without Bath—Single Room, \$5.50. With Bath—Double Room (per person) \$11.50, Single Room \$17.00. Rooms with bath are not available at Yellowstone Lodges.

### LEAVING DATES

C-1.....June 22

C-2.....June 29

C-3.....July 6

C-4.....July 13

C-5.....July 20

C-6.....July 27

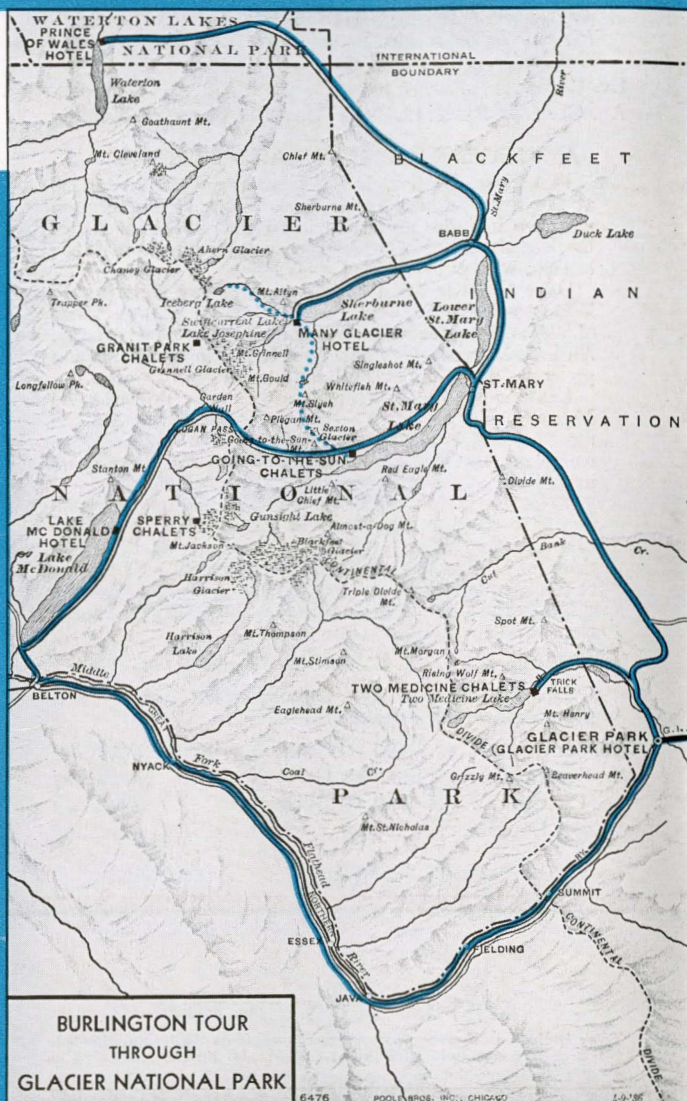
C-7.....Aug. 3

C-8.....Aug. 10

C-9.....Aug. 17

# Glacier National Park

## MIGHTY RUGGED GRANDEUR



There's Sport for Everyone  
in Glacier National Park

Within the 1,500 square miles of Glacier National Park is crowded an array of mountain scenery amazingly beautiful and spectacular beyond words. It is sharply different from any other mountain scenery or any other national park in America, and in ruggedness and sheer grandeur, Glacier probably surpasses the Alps.

It is a mighty turmoil of monster peaks, tremendous gulfs and enormous hollowed cirques; with scores of living glaciers, innumerable lakes of unbelievable charm, roaring rivers of icy water and

plunging torrents; with magnificent rock colorings varying from pastel shades of light blue to the deepest purple, from brilliant reds to the faintest rose; and over it all the vast eternal silence of the Rockies.

Through Glacier extends the main range of the Rockies, the Continental Divide cutting the park into halves. Within the park there are 83 named mountains having an altitude of from 7,000 to 10,000 feet, and four exceeding 10,000 feet. From the summit of Swiftcurrent Mountain can be counted over 40 of these majestic peaks from one viewpoint!

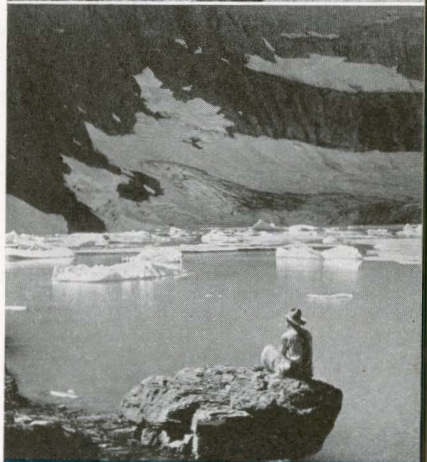
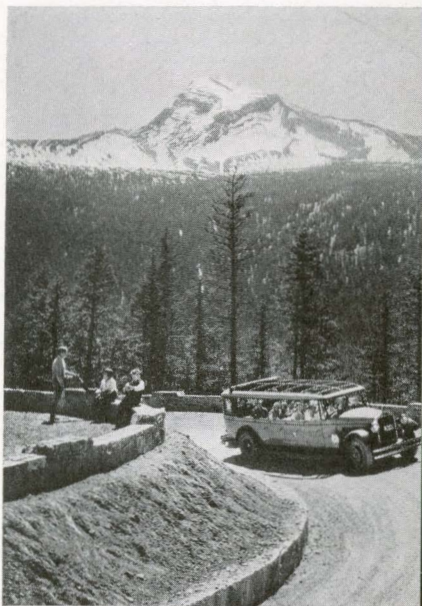
There are no foothills. The mountains rise with amazing abruptness from the level floor of valley or shore of lake. You are *close* to them. You can, in a manner of speaking, walk up and touch the side of a mountain which rises like the sheer wall of an edifice.

One of Glacier Park's outstanding attractions is, of course, the glaciers after which the park is named. They cling by scores to the rugged mountain sides. In all, there are some three score of these fascinating remnants of the great ice sheets that millions of years ago shaped Glacier Park for tourists today. Upon them one may snowball in midsummer. In June and July wild flowers in profusion fringe their edges.

Next to the glaciers, perhaps, the lakes are the most popular feature of the park. There is an amazing variety and number of them. The United States Geological Survey has mapped more than 250 and many have not yet been named. Among these mountain waters are Lake St. Mary about a mile above sea level, Sherburne Lake, Two Medicine Lake, and Lake McDonald. All are long, narrow and very deep, with mountains rising sheer from their shores. You may cruise them in comfortable launches. Of all the beautiful smaller lakes which lie scattered like gems among the peaks, Iceberg Lake is the most unusual and interesting. Iceberg Glacier projects into its clear waters and, during the summer, hundreds of miniature icebergs float upon its turquoise surface, flowers and foliage growing along its shores.

A splendid addition to our 1937 Glacier Park tours is the trip across the border into Canada to Waterton Lakes National Park. This beautiful park, off the beaten path yet easily accessible by a magnificent scenic highway, adjoins Glacier Park to the north and is practically hemmed in by both the American and Canadian Rockies. In fact, Waterton Lake lies partly in each country. The picturesque Prince of Wales Hotel, first-class in every respect, is situated on a rocky promontory at the north end of the lake. Most of our Glacier Park tours stop overnight here.

A Glorious Highway View  
of Heaven's Peak on the  
Way to Logan Pass



Iceberg Lake's Miniature  
Midsummer Floes . . . one  
of Glacier's Beauty Spots

## TOUR D—8 DAYS

### Air-Conditioned Equipment Throughout

*Adventurous days in Geyserland . . . sightseeing in the Denver-Colorado Springs-Pikes Peak region.*

Lv. CHICAGO . . . . . 11.00 PM Burlington . . . . . Saturday  
(Union Station) (C.S.T.)

Lv. St. LOUIS . . . . . (As you prefer) . . . . . Saturday

Our tour guests from St. Louis will join the rest of our party at Chicago.

Lv. St. PAUL . . . . . 8.35 AM Northern Pacific . . . . . Sunday

Lv. MINNEAPOLIS . . . 9.10 AM Northern Pacific . . . . . Sunday

Our westward journey on the "North Coast Limited" is broken briefly at Mandan, N. D., where a party of Sioux Indians in full war paint entertains us according to their tribal customs.

Ar. GARDINER . . . 11.00 AM Northern Pacific . . . Monday

### FOUR DAYS AMONG THE GEYSERS

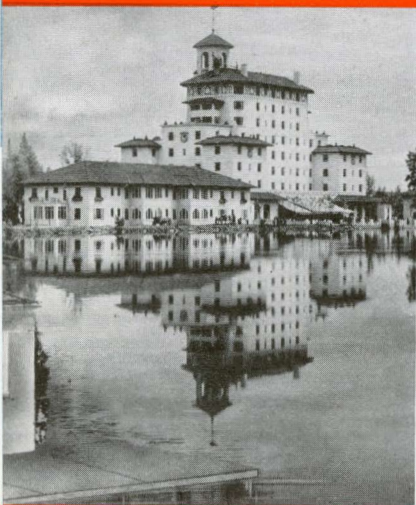
Losing none of our precious time upon our arrival at Gardiner, we motor off at once into the park to Mammoth Hot Springs, where we stop an hour or two for lunch and to delve among the streaming rainbow-colored terraces. Presently we motor eastward to Tower Falls and the Yellowstone River, then along the slope of Mt. Washburn to Grand Canyon. The afternoon and Tuesday morning are ours to explore the canyon (from whose color Yellowstone derives its name), seeking vantage points from which we may view the glorious Great Fall.

## Yellowstone Park and Colorado

### LEAVING DATES

D-1 . . . . .	June 19
D-2 . . . . .	June 26
D-3 . . . . .	July 3
D-4 . . . . .	July 10
D-5 . . . . .	July 17
D-6 . . . . .	July 24
D-7 . . . . .	July 31
D-8 . . . . .	Aug. 7
D-9 . . . . .	Aug. 14
D-10 . . . . .	Aug. 21
D-11 . . . . .	Aug. 28

Reflected Beauty of the luxurious  
Broadmoor Hotel, Colorado Springs



### COST OF COMPLETE TOUR

Tour includes all necessary expenses such as Pullman, \*Hotels (Two to a room), all Meals, and Auto Trips as shown in itinerary.

Costs "without rail ticket" are for the benefit of passengers coming from the East or South with through rail tickets.	From CHICAGO		† From ST. LOUIS	
	Without Railroad Ticket	With Railroad Ticket	Without Railroad Ticket	With Railroad Ticket
Two in Lower Berth (each)	\$77.88	\$124.83	\$77.88	\$126.73
One in Lower Berth . . . .	87.10	134.05	87.10	135.95
One in Upper Berth . . . .	83.45	130.40	83.45	132.30

\*Via Lodges in Yellowstone, \$1.00 less.

†No meals or Pullman included between St. Louis and Chicago.

#### ADDITIONAL FOR SPECIAL HOTEL ACCOMMODATIONS:

Without Bath—Single Room \$2.50. With Bath—Double Room (per person) \$3.00, Single Room \$5.50.

Tuesday afternoon we continue by motor, with fascinating stops at the seething acres of the Norris Geyser Basin, Biscuit Basin, Morning Glory Pool and many other hot water phenomena. Following the Firehole River we come suddenly upon the amazing Upper Geyser Basin and its countless gushers, large and small—culminating in the fantastic regularity of illustrious Old Faithful.

All day Wednesday is set aside for exploring the mysteries of this grotesque basin, perhaps with a U. S. ranger for guide and impromptu lecturer. His knowledge of this strange land of "White Magic" will add greatly to our enjoyment. Here, perhaps for the first time, it is our privilege to gain a full realization of the mighty, inscrutable works of Nature, unchecked by the handiwork of man.

Thursday brings us to an entirely different region. We motor over the Continental Divide down to Yellowstone Lake for a pleasant luncheon at the Lake Hotel. After seeing Mud Volcano and Dragon's Mouth, and the miracle of geysers spouting from the cold lake waters, we cross the famed "Fishing Bridge" and debouch upon the Cody Road for the supreme sightseeing thrill of our entire Yellowstone visit—across grim heights, through forest and dude ranch country, and threading the breathtaking Shoshone Gorge (past the gigantic dam) on our way to Cody, Wyoming.

Lv. CODY . . . . . 7.45 PM Burlington . . . . . Thursday

Southward through Wyoming and Colorado on the Burlington's new train, picturesquely named the "Buffalo Bill."

Ar. DENVER . . 1.00 PM Colorado & Southern . . . . Friday

Right after luncheon motor cars arrive to take us for a tour of downtown Denver, the Civic Center, residential districts and Cheesman Park.

Lv. DENVER . . . . . 3.00 PM D. & R.G.W. . . . . Friday

Ar. Colorado Springs 4.46 PM D. & R.G.W. . . . . Friday

## SIGHTSEEING THRILLS AND THE BROADMOOR

Arriving in Colorado Springs we go to the wonderful Broadmoor Hotel for dinner, a truly luxurious evening, and overnight . . . a real highlight of our entire tour. Rooms with bath are provided.

Saturday morning we "scale the heights" . . . to that patriarch of the Rockies and America's most illustrious mountain, Pikes Peak. Motoring all the way, we ascend to its very top where we find a mighty panorama awaiting us.

Returning to Denver in the afternoon we arrive in time to catch the famous air-conditioned flyer, the Burlington "Aristocrat."

Lv. DENVER . . . . . 8.00 PM Burlington . . . . . Saturday

Homeward bound from the Western wonderlands, aboard the crack "Aristocrat," recalling the myriad highlights of a glorious trip.

Ar. OMAHA . . . . . 7.50 AM Burlington . . . . . Sunday

Ar. CHICAGO . . . . . 7.50 PM Burlington . . . . . Sunday

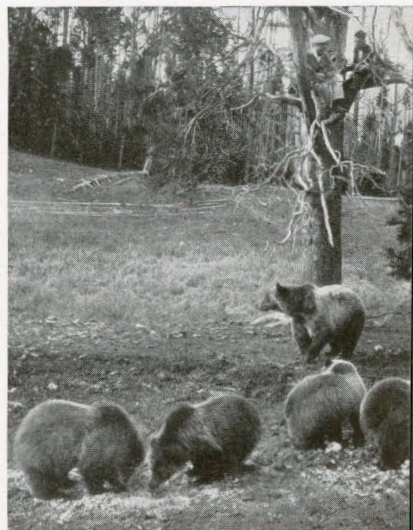
Ar. ST. LOUIS . . . . . 9.15 PM Burlington . . . . . Sunday

St. Louis passengers climax their eventful vacation tour with a trip on the Diesel-powered Mark Twain Zephyr from Burlington, Iowa.

## CONDENSED ITINERARY

Lv. Chicago . . . . . Sat.  
Lv. St. Louis . . . . . Sat.  
Ar. Gardiner . . . . . Mon.  
Four Days in Yellowstone.  
Lv. Cody . . . . . Thur.  
Ar. Denver . . . . . Fri.  
Ar. Colorado Springs . . . . Fri.  
One Day at Colorado Springs.  
Ar. Chicago . . . . . Sun.  
Ar. St. Louis . . . . . Sun.

"Playing Safe!"—even if the Bears  
in Yellowstone Park are Tame



# Two Great Gateways from Yellowstone

## SCENIC CODY ROAD

This year certain Burlington Es-corted Tours offer a choice of two spectacular routes on leaving Yellowstone Park—one by way of the famed Cody Road through the heart of the Buffalo Bill country, the other over the new \$2,500,000 Red Lodge Highway through the Beartooth Mountains of Montana.

The eighty mile Cody Road leads east from the park through one of the wildest, least known and scarcely explored mountain areas in America. The far-flung Absaroka Range walls up the entire east side of Yellowstone all the way from the northeast to the southeast corner—and the Cody Road is the only way across.

It penetrates raw wilderness "as it was in the beginning"—no other highway crosses the Cody Road in all the miles from Yellowstone Lake to Cody. There is not a town, village or settlement of any sort in its entire length except for fifteen or twenty of those famous vacation places known as dude ranches. Old maps show it follows the same route taken by the pioneer explorer John Coulter in making his adventurous way back to civilization from the Yellowstone Valley.

Ascending the west slope of the Absaroka Range, the highway drops down from Sylvan Pass in an amazing series of curves, loops and twists to the tumbling Shoshone River. Then comes thirty miles of wonder way through the heart of the Shoshone National Forest, a famed big-game country; and a dozen more miles along the twisting Shoshone River through a great valley flanked by towering bare cliffs fantastically eroded into all manner of curious crests and images.

Afterward comes the breath-taking climax—threading grim Shoshone Canyon on a six-mile shelf dynamited out of the sheer rock wall of Rattlesnake Mountain. At the head of this Canyon is the giant Shoshone Irrigation Dam which has brought water to the surrounding country and added millions of dollars to its natural resources.

Scenes along the famous Cody Road.  
Top—Approaching the lofty "Palisades."  
Center—The breath-taking route through grim Shoshone Canyon. Bottom—Leaving the great dam, the road skirts Shoshone Reservoir



# National Park's Magic Wonderland

and the New

## RED LODGE HIGHWAY

Bisecting the mountain wilderness hitherto accessible only to the hunter, trapper and his quarry, the new Red Lodge Highway offers a great addition to the scenic possibilities of Yellowstone Park. From Silver Gate ranger station at the northeast entrance to the Park, all the way to Red Lodge where the railroad begins, this new roadway opens up an unspoiled, untouched mountainland of scenic superlatives.

It passes through the old gold mining camp of Cooke City, mounts to the very top of the Beartooth Mountains—a wonderfully smooth and gently graded highway—and follows the peaks for mile after glorious mile. At one point twenty-six gem-like lakes can be seen in the wild valleys on every side. Each sweeping curve brings forth some new and thrilling vista. Even in the midst of summer one rides level with snowclad peaks.

Pilot Peak, Mount Zimmer, the Bear's Tooth and many other peaks whose altitude exceeds 10,000 feet, are constantly visible from this great highway, and not the least beautiful of its nearly 150 miles is the breath-taking descent to Wyoming Creek, thence through Custer National Forest and forest-choked Rock Creek Canyon.



*Above—A delightful pause along the Red Lodge Highway, in the midst of incomparable mountain splendor*

*Below—Silver Gate, where the Red Lodge Highway, newest of Yellowstone gateways, enters the park*

*Bottom—For mile after thrilling mile, the new Red Lodge Highway parallels the snow-capped peaks*



# Glacier Park and Canadian Rockies

## TOUR E—13 DAYS

### Air-Conditioned Equipment Throughout

*Thrilling sightseeing in the wild broken mountains of Glacier National Park, then over the border amid the scenic loveliness of the Canadian Rockies*

Lv. CHICAGO . . . . . 11.15 PM Burlington . . . . . Sunday  
(Union Station) (C.S.T.)

Lv. ST. LOUIS . . . . . 2.00 PM Burlington . . . . . Sunday

Lv. ST. PAUL . . . . . 8.50 AM Gt. Nor. . . . . Monday

Lv. MINNEAPOLIS . . . . . 9.25 AM Gt. Nor. . . . . Monday

Westward on the famous "Empire Builder" for a fast trip to Glacier Park, where we are welcomed by a band of picturesque Blackfeet Indians.

Ar. BELTON . . . . . 2.30 PM Gt. Nor. . . . . Tuesday

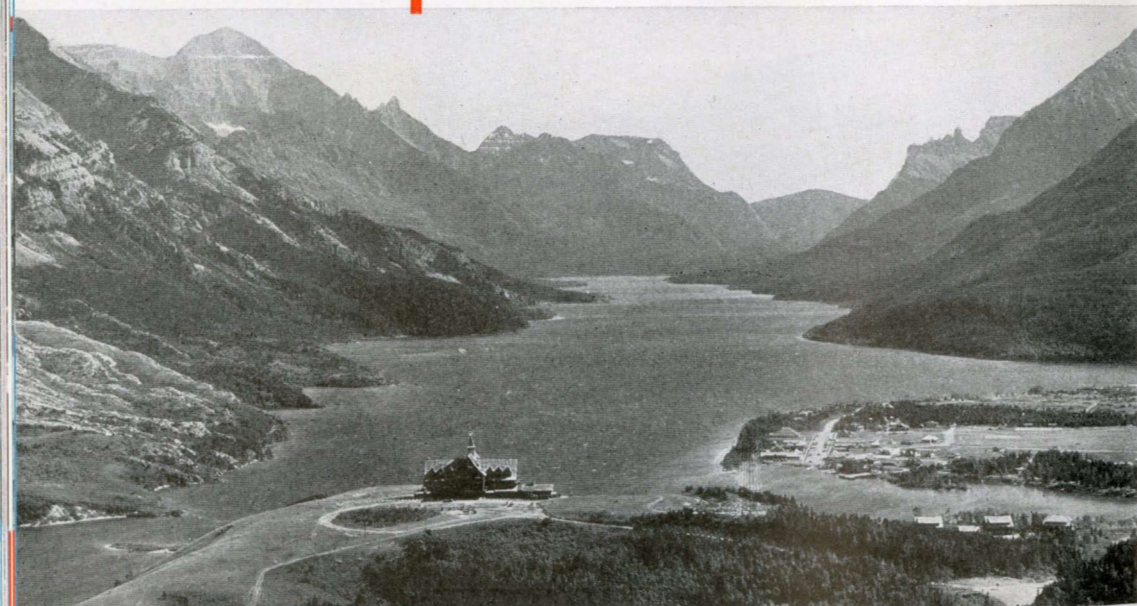
### ADVENTURING IN GLACIER PARK

We are met by a fleet of motor cars that wheel us quickly along to the Lake McDonald Hotel for overnight. Next morning after breakfast we embark on one of the most exciting phases of our tour, the motor ride up over the thrilling Going-to-the-Sun Highway. This great mountain motor road takes us along yawning precipices, beside towering peaks, over Logan Pass where once it was considered impossible to build a highway, with a glorious mountain world spread out all around us.

Gliding smoothly down the Eastern slopes we pass Going-to-the-Sun Chalets and along the shore of the St. Mary Lakes and Sherburne Lake. Every foot of our journey, the marvelous scenery constantly changes like a tremendous natural color movie.

At the wonderful Many Glacier Hotel on Swiftcurrent Lake a whole new wilderness world lies before us. Tonight, all day tomorrow and again overnight, we are in an amazing confusion of rugged magnificence that outrivals the Alps. You roam at will, hiking, fishing, riding, boating, glorying in the beauty all about us. At

Magnificent Location of  
Prince of Wales Hotel on  
Canada's Waterton Lake



night there is fun around the great hotel fireplace or dancing before we retire.

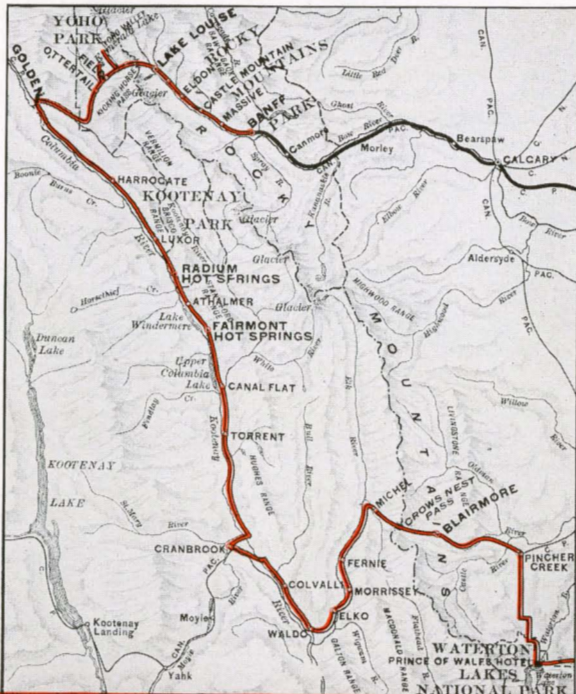
Friday turns another page of thrills and adventure. The day begins with motoring northward around Chief Mountain over a splendid new highway across the border into Canada, through Waterton Lakes Park to the picturesque Prince of Wales Hotel for the afternoon and night (rooms with bath), including a delightful launch ride down the lake to Goathaunt Camp on the American side.

## SIX DAYS IN THE CANADIAN ROCKIES

Let's go exploring! Arising fresh and rested Saturday morning, we go skimming through the famous Alberta grain fields, past "Frank Slide" where a mountain split in two and buried a village, through Crow's Nest Pass, then along the sparkling Elk River to Cranbrook where we stop overnight at the Cranbrook Hotel.

Sunday brings new vistas. We glide smoothly along the Kootenay River and Columbia Lake, through a valley flanked boldly by the Canadian Rockies. So we come to an especially unique feature of this tour ... the Radium Bungalow Camp in Sinclair Canyon. Arriving at noon, we spend the afternoon and night with comfortable accommodations and plenty to see and do. You will not want to miss the experience of a plunge in the famous hot radium pool, where the temperature varies from 75 to 110 degrees.

Away we go again Monday morning, along the Columbia River to Golden for luncheon, then winding among tangled peaks to Emerald Lake, a dream-like place hemmed in by glorious mountains that seem to scrape the sky. Continuing we plunge through Kicking Horse Canyon, ascend the Yoho Valley for a glimpse of Yoho Glacier and Takakkaw Falls, then on to lovely



## CONDENSED ITINERARY

Lv. Chicago	Sun.
Lv. St. Louis	Sun.
Ar. Belton	Tue.
4 Days in Glacier Park.	
6 Days in Canadian Rockies.	
Lv. Banff	Thur.
Ar. Chicago	Sat.
Ar. St. Louis	Sat.

## LEAVING DATES

E-1	June 20
E-2	June 27
E-3	July 4
E-4	July 11
E-5	July 18
E-6	July 25
E-7	Aug. 1
E-8	Aug. 8
E-9	Aug. 15
E-10	Aug. 22

## Stupendous "Garden Wall" in Glacier Park

Lake Louise and the stately Chateau where we have rooms with bath.

Your time here is your own, to hike, ride, boat or swim, or relax on the wide veranda, drinking in the beauty of the view.

Difficult as it is to leave, a new treat awaits us. After luncheon Wednesday we continue to another magnificent highlight of the Canadian Rockies at Banff, the incomparable Banff Springs Hotel. Overnight in rooms with bath, with all day Thursday at our disposal. Swiftly the hours fly by, and presently it is time to en-train for the East.

Lv. BANFF . . . . . 6.50 PM Can.Pac. . . . . Thursday  
Ar. MINNEAPOLIS . . . 6.55 AM Soo Line . . . . . Saturday  
Ar. ST. PAUL . . . . . 7.15 AM Soo Line . . . . . Saturday

Leaving the Twin Cities behind, our route follows the Father of Waters for 300 scenic miles of charming woods-and-waters vistas.

Ar. CHICAGO . . . . . 3.00 PM Burlington . . . . Saturday  
Ar. ST. LOUIS . . . . . 9.45 PM *Your Choice* . . . Saturday

## COST OF COMPLETE TOUR

Tour includes all necessary expenses such as Pullman, \*Hotels (Two to a room), all Meals, and Auto Trips as shown in itinerary.

Costs "without rail ticket" are for the benefit of passengers coming from the East or South with through rail tickets.	From CHICAGO		†From ST. LOUIS	
	Without Railroad Ticket	With Railroad Ticket	Without Railroad Ticket	With Railroad Ticket
Two in Lower Berth (each)	\$150.75	\$201.60	\$152.33	\$206.93
One in Lower Berth . . . . .	161.00	211.85	162.90	217.50
One in Upper Berth . . . . .	156.95	207.80	158.70	213.30

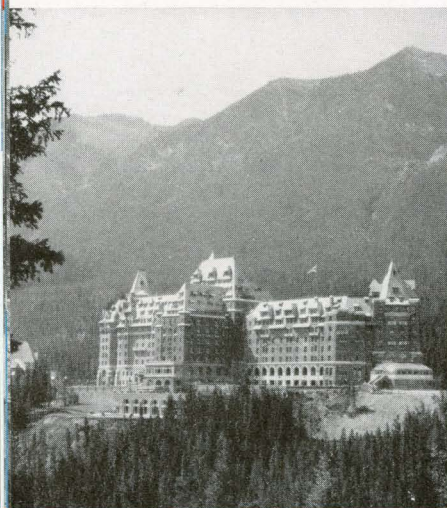
### ADDITIONAL COST FOR SUPERIOR ACCOMMODATIONS:

\*Single room (without bath, except at Lake Louise and Banff) \$10.50; with bath in Glacier Park \$19.00.

No single rooms or rooms with bath available at Cranbrook or Radium

†No Meals or Pullman included from Chicago to St. Louis.

Two Splendid Hotels in the Canadian Rockies. Left—The Banff Springs Hotel. Right—View from lawn of Chateau Lake Louise



## TOUR CE—18 DAYS

### Air-Conditioned Equipment Throughout

Lv. CHICAGO.....11.00 PM Burlington.....Tuesday  
(Union Station) (C.S.T.)

From the Union Station with Tour C (see page 12).

Lv. ST. PAUL..... 3.35 AM Nor. Pac....Wednesday

Lv. MINNEAPOLIS.... 9.10 AM Nor. Pac....Wednesday

Ar. GARDINER.....11.00 AM Nor. Pac.....Thursday

Motoring in Yellowstone, first to Mammoth Hot Springs, then to Old Faithful Inn in the Upper Geyser Basin for the night. Here we see Old Faithful.

Friday brings us to Yellowstone Lake and Saturday to the sublime Grand Canyon and Great Falls. Accommodations at Canyon Hotel or Lodge. We explore the great chasm Saturday, and motor eastward out of the park Sunday over famous Cody Road.

Ar. GLACIER PARK...12.40 PM Gt. Nor.....Monday

Lunch at Glacier Park Hotel, then to Two Medicine Lake and back by motor. Indian ceremonials at our hotel in the evening.

Next morning, leaving Tour C, we join Tour E (see page 20) on the train to Belton where we motor to Lake McDonald Hotel for overnight.

Wednesday's supreme thrill... the ride up the new highway over Logan Pass, down past Going-to-the-Sun and along the lakes to Many Glacier Hotel until Friday morning.

New adventures Friday. Motoring over the splendid road to Waterton Lakes Park, Canada, for overnight at Prince of Wales Hotel (rooms with bath). An afternoon's launch ride down the lake to Goathaunt Camp.

Through vast wheat fields Saturday, over Crow's Nest Pass to Cranbrook. Overnight at Cranbrook Hotel. Winding among the Canadian Rockies on Sunday to Radium Springs Bungalow Camp.

Along the swift Columbia River next morning. Lunch at Golden, then up to Emerald Lake and via Kicking Horse Canyon and Takakkaw Falls to Lake Louise. Overnight at Chateau (rooms with bath).

After lunch Wednesday to the splendid Banff Springs Hotel; again rooms with bath. All day Thursday amid magnificent surroundings before we board the train.

Lv. BANFF..... 6.50 PM Can. Pac.....Thursday

Ar. MINNEAPOLIS.... 6.55 AM Soo Line.....Saturday

Ar. ST. PAUL..... 7.15 AM Soo Line.....Saturday

Ar. CHICAGO..... 3.00 PM Burlington.....Saturday

Ar. ST. LOUIS..... 9.45 PM *Your Choice*....Saturday

## COST OF COMPLETE TOUR

Tour includes all necessary expenses such as Pullman, Hotels (Two to a room), all Meals, and Auto Trips as shown in itinerary.

Costs "without rail ticket" are for the benefit of passengers coming from the East or South with through rail tickets.	From CHICAGO		*From ST. LOUIS	
	Without Railroad Ticket	With Railroad Ticket	Without Railroad Ticket	With Railroad Ticket
Two in Lower Berth (each)	\$204.25	\$264.93	\$204.25	\$268.68
One in Lower Berth.....	215.75	276.43	215.75	280.18
One in Upper Berth.....	211.20	271.88	211.15	275.58

\*No meals or Pullman included between Chicago and St. Louis.

# Yellowstone • Glacier • Canadian Rockies

## CONDENSED ITINERARY

Lv. Chicago.....Tue.

Lv. St. Louis.....Tue.

Ar. Gardiner.....Thur.

Four Days in Yellowstone.

Ar. Cody.....Sun.

Ar. Glacier.....Mon.

5 Days in Glacier Park.

6 Days in Canadian Rockies.

Lv. Banff.....Thur.

Ar. Chicago.....Sat.

Ar. St. Louis.....Sat.

## LEAVING DATES

CE-1.....June 22

CE-2.....June 29

CE-3.....July 6

CE-4.....July 13

CE-5.....July 20

CE-6.....July 27

CE-7.....Aug. 3

CE-8.....Aug. 10

CE-9.....Aug. 17

# Pacific Northwest and Canadian Rockies

## TOUR F—13 DAYS

**Air-Conditioned Equipment Throughout  
Rooms with Bath wherever we stop**

Lv. CHICAGO . . . . . \*11.00 or †11.15 PM (C.S.T.)  
(Union Station) Burlington . . . . . Sunday  
Lv. ST. LOUIS . . . . . 2.00 PM Burlington . . . . . Sunday  
Lv. ST. PAUL . . . . . \*8.35 or †8.50 AM . . . . . Monday  
Lv. MINNEAPOLIS . . . . . \*9.10 or †9.25 AM . . . . . Monday

\*Tours F1-3-5-7-9 via Northern Pacific "North Coast Limited."  
†Tours F2-4-6-8-10 via Great Northern "Empire Builder."

Across the continent on one of these splendid trains.  
Two days of luxurious air-conditioned travel.

Ar. PORTLAND . . . . . 7.35 AM S.P. & S.Ry. Wednesday

Here we are in the City of Roses, ready for a delightful sightseeing tour including the wonderful Columbia River Highway, Multnomah and Horsetail Falls. Headquarters at the Multnomah Hotel.

Ar. TACOMA . . . . . 4.38 PM Nor. Pac. Wednesday

After a comfortable night at the Winthrop Hotel, we leave Thursday morning by motor for Rainier National Park, arriving in Paradise Valley at noon. Opportunities galore for hikes or horseback rides to nearby glaciers, or climbing the slopes of Mt. Rainier. Its colossal summit, perpetually snow clad, is in delightful contrast to the wild flowers that carpet the valley. At Paradise Inn for the night.

Friday morning we motor "down to earth" again, enroute to Seattle for an afternoon of sightseeing around the parks, lakes and residential sections before going to the Olympic Hotel for the night.

Lv. SEATTLE . . . . . 9.00 AM Can. Pac. S.S. Saturday

We go a-cruising . . . across the Straits of Juan de Fuca to the island city of Victoria, capital of British Columbia. In this quaint English city we motor about to the famous Butchart Gardens, Parliament Buildings and other places. One of our treats is the night at the Empress Hotel. Sunday morning you rest . . . sleep late, go to church, stroll about, etc.

## LEAVING DATES

F-1 . . . . . June 20  
F-2 . . . . . June 27  
F-3 . . . . . July 4  
F-4 . . . . . July 11  
F-5 . . . . . July 18  
F-6 . . . . . July 25  
F-7 . . . . . Aug. 1  
F-8 . . . . . Aug. 8  
F-9 . . . . . Aug. 15  
F-10 . . . . . Aug. 22

## COST OF COMPLETE TOUR

Tour includes all necessary expenses such as Pullman, Hotels (Two to a room, with bath), All Meals, and Auto Trips as shown in itinerary.

Costs "without rail ticket" are for the benefit of passengers coming from the East or South with through rail tickets.	From CHICAGO		*From ST. LOUIS	
	Without Railroad Ticket	With Railroad Ticket	Without Railroad Ticket	With Railroad Ticket
Two in Lower Berth (each)	\$117.40	\$203.40	\$118.28	\$202.03
One in Lower Berth . . . . .	133.15	219.15	133.65	217.40
One in Upper Berth . . . . .	126.85	212.85	127.50	211.25

\*No meals or Pullman included between Chicago and St. Louis. Additional for Single Rooms \$9.00.



Wherever you roam in Rainier Park  
the Snow-capped Peak of Mt. Rainier  
is a constant Thrilling Sight

## CONDENSED ITINERARY

Lv. Chicago ..... Sun.  
Lv. St. Louis ..... Sun.  
Ar. Portland ..... Wed.  
Ar. Tacoma ..... Wed.  
One Day at Mt. Rainier.  
Ar. Seattle ..... Fri.  
Ar. Victoria ..... Sat.  
Ar. Vancouver ..... Sun.  
Ar. Lake Louise ..... Tue.  
3 Days in Canadian Rockies.  
Lv. Banff ..... Thur.  
Ar. Chicago ..... Sat.  
Ar. St. Louis ..... Sat.

Lv. VICTORIA ..... 1.45 PM Can.Pac.S.S. .... Sunday

At sea once more, this time across to Vancouver's busy harbor. A truly delightful trip.

Ar. VANCOUVER ..... 5.55 PM Can.Pac.S.S. .... Sunday

Stop at the Hotel Georgia and on Monday morning enjoy a motor trip throughout this famous Canadian city. Plenty of time for shopping.

Lv. VANCOUVER ..... 6.55 PM Can.Pac. .... Monday

Tuesday finds us lounging in an open-top observation car as we wend our way through towering canyons into the Canadian Rockies.

Ar. FIELD ..... 1.25 PM Can.Pac. .... Tuesday

Three wonderful days ahead! Motors wheel us away to charming Emerald Lake, through Kicking Horse Canyon and Yoho Valley to the gem of the Canadian Rockies, Lake Louise. Our home is the Chateau.

Wednesday morning is free for mountainland pleasures. In the afternoon we motor along the Bow River to Banff and the luxurious Banff Springs Hotel for another eventful night. All day Thursday is left open for a final fling at the splendor of the Great West.

Lv. BANFF ..... 6.50 PM Can.Pac. .... Thursday

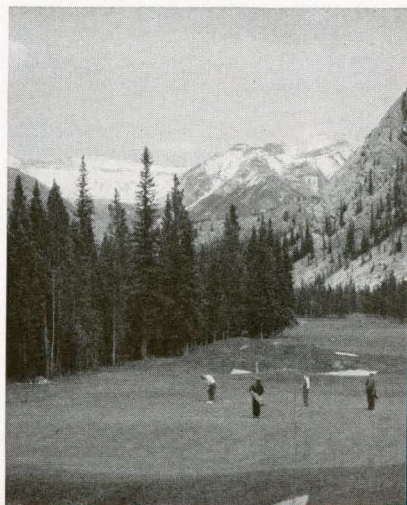
Ar. MINNEAPOLIS .... 6.55 AM Soo Line ..... Saturday

Ar. ST. PAUL ..... 7.15 AM Soo Line ..... Saturday

Ar. CHICAGO ..... 3.00 PM Burlington .... Saturday

Ar. ST. LOUIS ..... 9.45 PM *Your Choice* .... Saturday

Would you like to play Golf at the  
Banff Springs Hotel? Here is the  
18th Green and Fairway



# Glacier National Park

## TOUR G — 8 DAYS

### Air-Conditioned Equipment Throughout

Lv. CHICAGO.....	11.15 PM Burlington.....	Saturday (Union Station) (C.S.T.)
Lv. ST. LOUIS.....	(As you prefer).....	Saturday
Lv. ST. PAUL.....	8.50 AM Gt. Nor.....	Sunday
Lv. MINNEAPOLIS..	9.25 AM Gt. Nor.....	Sunday

Westward Ho! aboard the famed transcontinental flyer "Empire Builder," getting acquainted with each other as we go.

Ar. GLACIER PARK..	12.40 PM Gt. Nor.....	Monday
--------------------	-----------------------	--------

### FIVE DAYS IN MOUNTAINLAND

Here we are in Adventureland! A band of Blackfeet Indians in full regalia half startles us as we step from the train. Making ourselves at home in the spectacular Glacier Park Hotel, we motor after luncheon to Two Medicine Lake where we enjoy a launch ride to the far end for a view of Twin Falls before returning to our hotel.

Bright and early Tuesday morning we spin off over the Blackfeet Highway, 55 spectacular miles up to the marvelous scenery and gracious hospitality of Many Glacier Hotel. Three splendid days of grand fun and sport await us here, including a boat ride across Swiftcurrent Lake up to the head of Josephine Lake for a mighty view of Grinnell Glacier. This is one of the high spots of our tour.

*The wonderful trip to the Waterton Lakes in Canada can be included for \$10.75 additional, motoring from Glacier Park Hotel Tuesday morning over the spectacular Blackfeet Highway to the mountain-locked Prince of Wales Hotel. Time in the afternoon for a restful launch trip far down the lake to Goathaunt Camp. Overnight at this charming hotel and down to Many Glacier Wednesday morning.*

Wednesday and Thursday are open for individual enjoyment. You may hike or ride among majestic mountains to Iceberg Lake and other interesting places. Disciples of Izaak Walton will revel in the trout fishing, and at night there is peace and entertainment around the great fireplace in the hotel lobby.

Friday is a day of thrill upon thrill. After breakfast we start off along the shore of St. Mary Lakes and presently find ourselves ascending the new Going-to-the-Sun Highway that lifts itself up and over the Continental Divide at Logan Pass. Here is the grand climax of our tour. Precipices thousands of feet deep yawn below . . . granite peaks rear their grim heights above . . . mountain winds sweep over us as we split the very heart of the Rockies on a splendid highway which not long ago it was considered virtually impossible to build at all.

### CONDENSED ITINERARY

Lv. Chicago.....	Sat.
Lv. St. Louis.....	Sat.
Ar. Glacier Park .....	Mon.
Five Days in Glacier Park.	
Lv. Belton.....	Fri.
Ar. Chicago.....	Sun.
Ar. St. Louis.....	Sun.

### LEAVING DATES

G-1.....	June 19
G-2.....	June 26
G-3.....	July 3
G-4.....	July 10
G-5.....	July 17
G-6.....	July 24
G-7.....	July 31
G-8.....	Aug. 7
G-9.....	Aug. 14
G-10.....	Aug. 21
G-11.....	Aug. 28



Grinnell Glacier lies at the head of Josephine Lake, a short distance from Many Glacier Hotel

Surmounting the Great Divide, presently gliding down the Western slope into an entirely different country where the trees and other vegetation are not the same as on the Eastern slope. Following the guiding waters of McDonald Creek down to Lake McDonald Hotel, we arrive in time for luncheon. Afterward, regretfully, we continue in leisurely fashion on down the lake shore to Belton where we board the train for home. Looking back toward the silent mountains for a final glance you will say of your fascinating motor ride across the peaks: "Nowhere else is there a trip like that."

Lv. BELTON . . . . . 4.45 PM Gt. Nor. . . . . Friday

Starting Eastward, we parallel the Flathead River, Southern boundary of Glacier Park, for fifty miles; then across the plains of Montana, through the vast wheat fields of the Dakotas and the charming lakes region of Northern Minnesota.

Ar. MINNEAPOLIS . . . 10.00 PM Gt. Nor. . . . . Saturday

Ar. ST. PAUL . . . . . 10.30 PM Gt. Nor. . . . . Saturday

A charming climax to a great trip . . . Southward on the famous Water Level Route, where for 300 miles along the Mississippi the track grade never exceeds one-quarter of one per cent.

Ar. CHICAGO . . . . . 8.40 AM Burlington . . . . . Sunday

Ar. ST. LOUIS . . . . . 5.10 PM *Your Choice* . . . . . Sunday



## COST OF COMPLETE TOUR

Tour includes all necessary expenses such as Pullman, Hotels (Two to a room, without bath), all Meals, and Auto Trips as shown in itinerary.

Costs "without rail ticket" are for the benefit of passengers coming from the East or South with through rail tickets.

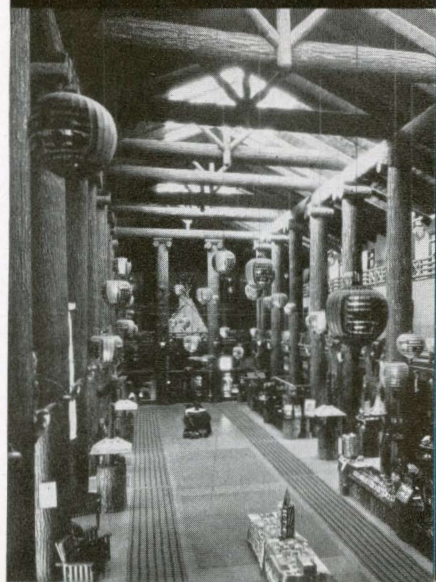
	From CHICAGO		*From ST. LOUIS	
	Without Railroad Ticket	With Railroad Ticket	Without Railroad Ticket	With Railroad Ticket
Two in Lower Berth (each)	\$61.40	\$109.60	\$61.40	\$111.50
One in Lower Berth . . . . .	71.30	119.50	71.30	121.40
One in Upper Berth . . . . .	67.35	115.55	67.35	117.45

\*No meals or Pullman included between Chicago and St. Louis.

ADDITIONAL FOR SPECIAL ACCOMMODATIONS:

Without Bath—Single Room \$3.00. With Bath—Double Room \$7.50, Single Room \$10.50.

Glacier Park Hotel's Famous Lobby

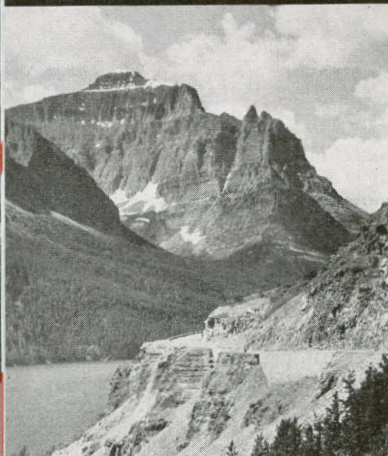


# Glacier National Park

## CONDENSED ITINERARY

Lv. Chicago .....Sun.  
Lv. St. Louis .....Sun.  
Ar. Glacier Park .....Tue.  
Four Days in Glacier Park.  
Lv. Belton .....Fri.  
Ar. Chicago .....Sun.  
Ar. St. Louis .....Sun.

## Highway to Going-to-the-Sun



## TOUR H—7 DAYS

### Air-Conditioned Equipment Throughout

Lv. Chicago ..... 11.15 PM Burlington ..... Sunday  
(Union Station) (C.S.T.)  
Lv. St. Louis ..... 2.00 PM Burlington ..... Sunday  
Lv. St. Paul ..... 8.50 AM Gt. Nor ..... Monday  
Lv. Minneapolis ..... 9.25 AM Gt. Nor ..... Monday

A day and a half of luxurious air-conditioned travel, westbound on the crack flyer, the Empire Builder—a pleasant prelude to coming adventure.

Ar. Glacier Park ..... 12.40 PM Gt. Nor ..... Tuesday

## FOUR DAYS AMONG THE MOUNTAINS

On arrival at Glacier Park Station a picturesque group of stalwart Blackfeet braves meets us with tribal welcome. Rooms being assigned us in the huge Glacier Park Hotel, after luncheon we motor away to mountain-locked Two-Medicine Lake to enjoy a restful launch ride down to the far end for a short hike to lovely Twin Falls. Returning to our hotel, we spend an eventful evening with the Indians and around the fireplace.

Wednesday morning finds us spinning off over the spectacular Blackfeet Highway up to Many Glacier Hotel for two days of absolute freedom—roaming or riding the nearby trails and crossing Swiftcurrent Lake by launch to view mighty Grinnell Glacier.

*If you desire you can easily arrange to take the trip to Waterton Lakes National Park in Canada, motoring up Wednesday morning and spending the night at the charming Prince of Wales Hotel. While here we have arranged for a launch trip far down the lake to Goathaunt Camp on the American shore—something you'll not want to miss. The return to Many Glacier Hotel is made Thursday morning. Cost of this splendid trip is \$10.75 additional.*

Thursday is another day for individual diversions. There is a wide choice of trail trips on foot or horseback, with or without guides, and each one is well worth taking. Close by too there is excellent fishing, and tackle is easily obtained. Not the least of your pleasure will be the entertainment in the evening.

Right after breakfast Friday we begin a thrilling trip that takes us along St. Mary Lakes and over the new Going-to-the-Sun Highway to where Logan Pass splits the Continental Divide. Great peaks rear their heads on all sides, forested canyons yawn below us and we pierce the heart of the Rockies on this, one of the most splendid highways anywhere in the west.

Descending from the heights our powerful motors glide smoothly down the western slope revealing magnificent panoramas at every sweeping turn and finally following McDonald Creek down to the peaceful Lake McDonald Hotel in time for luncheon. From here it is only a short and leisurely trip on down the lake shore to our waiting "Iron Horse" at Belton, western entrance to the park.

Lv. Belton ..... 4.45 PM Gt. Nor ..... Friday

Speeding eastward on our homeward journey, across the great Montana plains through the Dakotas and



Peaceful waters of Lake McDonald reflect the grandeur of snow-clad peaks and virgin forests.

Minnesota's charming lake country, we look back on our Glacier trip as an unforgettable experience.

Ar. Minneapolis.....10.00 PM Gt. Nor.....Saturday

Ar. St. Paul.....10.30 PM Gt. Nor.....Saturday

Southward via the Mississippi River Scenic Line on as smooth a stretch of track as one could hope for.

Ar. Chicago..... 8.40 AM Burlington.....Sunday

Ar. St. Louis..... 5.10 PM *Your Choice*.....Sunday

## COST OF COMPLETE TOUR

Tour includes all necessary expenses such as Pullman, Hotels (Two to a room, without bath), all Meals, and Auto Trips as shown in itinerary.

Costs "without rail ticket" are for the benefit of passengers coming from the East or South with through rail tickets.

	From CHICAGO		*From ST. LOUIS	
	Without Railroad Ticket	With Railroad Ticket	Without Railroad Ticket	With Railroad Ticket
Two in Lower Berth (Each)	\$55.90	\$104.10	\$57.50	\$107.60
One in Lower Berth....	65.80	114.00	67.75	117.85
One in Upper Berth....	61.85	110.05	63.70	113.80

\*No meals or Pullman included between Chicago and St. Louis.

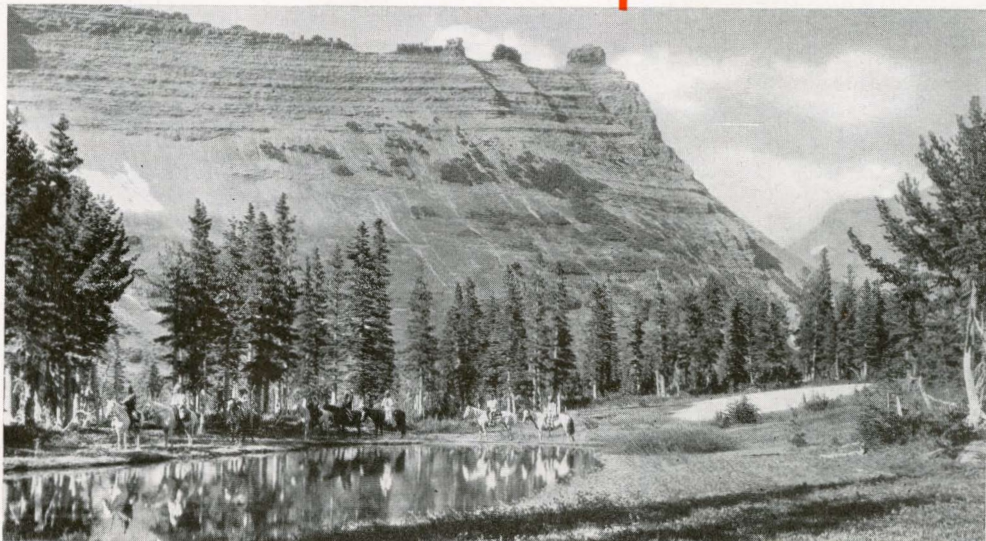
ADDITIONAL FOR SPECIAL ACCOMMODATIONS:

Without Bath—Single Room \$3.00. With Bath—Double Room \$7.50, Single Room \$10.50.

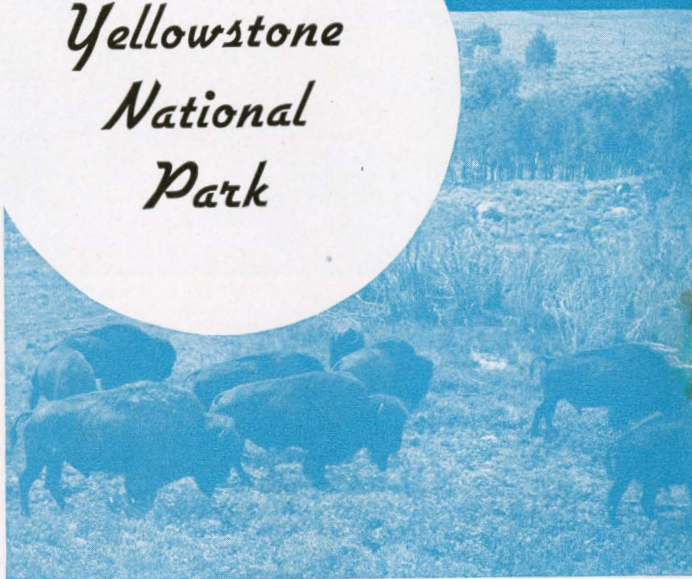
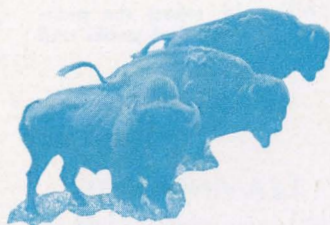
## LEAVING DATES

H-1.....	June 20
H-2.....	June 27
H-3.....	July 4
H-4.....	July 11
H-5.....	July 18
H-6.....	July 25
H-7.....	Aug. 1
H-8.....	Aug. 8
H-9.....	Aug. 15
H-10.....	Aug. 22

A band of Blackfeet Indians adds colorful atmosphere to Glacier Park's beauty.



# Yellowstone National Park



## CONDENSED ITINERARY

Lv. Chicago.....Sat.  
Lv. St. Louis.....Sat.  
Ar. Gardiner.....Mon.  
Five Days in Yellowstone.  
Lv. Cody.....Fri.  
Ar. Chicago.....Sun.  
Ar. St. Louis.....Sun.

## LEAVING DATES

Tour I-1.....June 19  
Tour I-2.....June 26  
Tour I-3.....July 3  
Tour I-4.....July 10  
Tour I-5.....July 17  
Tour I-6.....July 24  
Tour I-7.....July 31  
Tour I-8.....Aug. 7  
Tour I-9.....Aug. 14  
Tour I-10.....Aug. 21  
Tour I-11.....Aug. 28

## TOUR I — 8 DAYS

### Air-Conditioned Equipment Throughout

*Through and through the Yellowstone Wonderland . . .  
"in all the world no region quite like this"*

Lv. CHICAGO.....11.00 PM Burlington.....Saturday  
(Union Station) (C.S.T.)

St. Louis passengers join us at Chicago.

Lv. ST. PAUL.....8.35 AM Nor. Pac.....Sunday

Lv. MINNEAPOLIS..9.10 AM Nor. Pac.....Sunday

Enroute on the "North Coast Limited," a splendid transcontinental train air-conditioned throughout. A pleasant interlude at Mandan, N. D., where we stop for an informal "pow wow" with Sioux Indians.

Ar. GARDINER.....11.00 AM Nor. Pac.....Monday

## FIVE FULL DAYS IN YELLOWSTONE

Waiting motor cars promptly whirl us away through Gardiner Canyon for the first of Yellowstone's strange galaxy of hot water phenomena—the myriad tinted terraces and boiling pools of Mammoth Hot Springs. After a delightful luncheon and a short tour of the Springs, away we go past Golden Gate, Obsidian Cliff and the Virginia Cascades to that world marvel, the Grand Canyon of the Yellowstone, for sightseeing on a truly grand scale.

All Tuesday morning is ours to explore the beautiful canyon and to seek out thrilling views of the Great Fall. Tuesday afternoon we continue our tour westward to the great Norris Geyser Basin; then more fascinating curiosities at Excelsior Springs, and still more freaks of nature all the way to the strangest of them all—Old Faithful, the patriarch of geyserdom. In the midst of this greatest geyser region in the world, Old Faithful stands supreme.

A day at Old Faithful Inn or Lodge, every hour crammed full of fresh amazement and delight. There is time to see everything and perhaps swim in the magnificent new pool of invigorating geyser water. *There's* an experience to tell your friends about back home!

A Government ranger-naturalist shows you over the great geyser basin, helping you understand better the origin of this nobly crazy world. Wherever you go, you never tire of turning to watch Old Faithful perform regularly every hour.

Wednesday afternoon (all too soon) we motor away over the Continental Divide to Yellowstone Lake for a night at the Lake Hotel (or Lodge). Continuing Thursday morning, our route lies past the Mud Volcano and Dragon's Mouth, through Hayden Valley and so again to Grand Canyon, this time for 24 hours. Featuring our second stay here is a motor side trip over Dunraven Pass to Tower Falls.

We motor away Friday afternoon and soon realize the truth of the saying: "If you don't see the Cody Road, you don't see Yellowstone." We pick up the Cody Road at Yellowstone Lake and revel in eighty miles of superb sightseeing throughout its length . . . over the Absaroka Mountains at Sylvan Pass, through Shoshone National Forest and dude ranch country . . . along the great reservoir and through the grim gorge of the Shoshone River. So into Cody, Wyoming, passing Buffalo Bill's statue as we enter this tiny frontier town.

LV. CODY . . . . . 7.40 PM Burlington . . . . . Friday

On your way East, if you are an early riser you will see the famous Dakota Bad Lands from the car window.

AR. MINNEAPOLIS . . . 10.12 PM Nor. Pac. . . . . Saturday

AR. ST. PAUL . . . . . 10.45 PM Nor. Pac. . . . . Saturday

AR. CHICAGO . . . . . 8.45 AM Burlington . . . . . Sunday

AR. ST. LOUIS . . . . . 5.10 PM *Your Choice* . . . . . Sunday

## COST OF COMPLETE TOUR

Tour includes all necessary expenses such as Pullman, \*Hotels (Two to a room, without bath), all Meals, and Auto Trips as shown in itinerary.

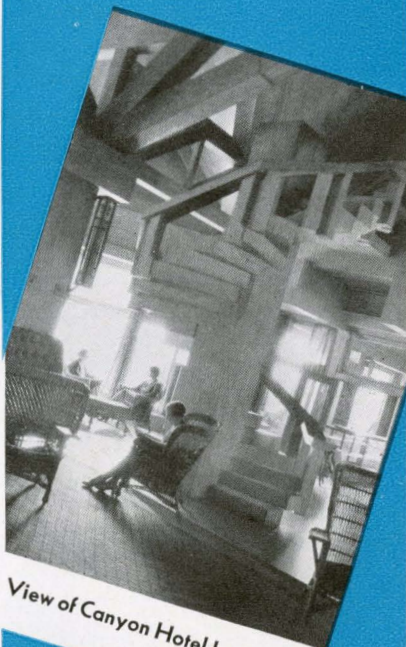
Costs "without rail ticket" are for the benefit of passengers coming from the East or South with through rail tickets.	From CHICAGO		†From ST. LOUIS	
	Without Railroad Ticket	With Railroad Ticket	Without Railroad Ticket	With Railroad Ticket
Two in Lower Berth (each)	\$67.13	\$114.08	\$67.13	\$115.98
One in Lower Berth . . . .	76.25	123.20	76.25	125.10
One in Upper Berth . . . .	72.60	119.55	72.60	121.45

\*Via Lodges in Yellowstone, \$2.00 less.

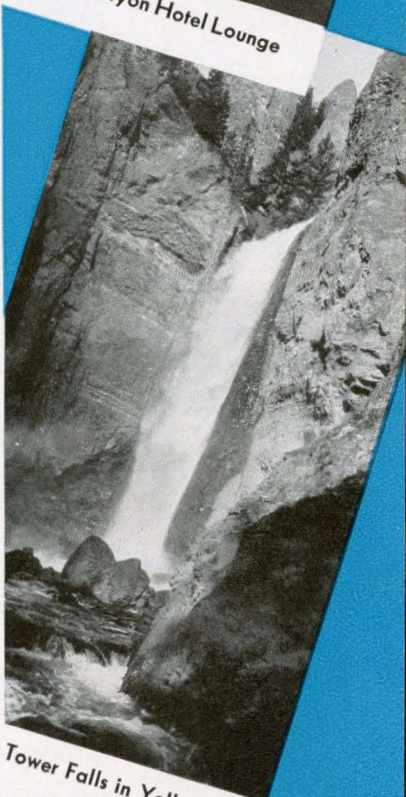
†No Meals or Pullman included between St. Louis and Chicago

ADDITIONAL (APPROXIMATE) FOR SPECIAL HOTEL ACCOMMODATIONS:

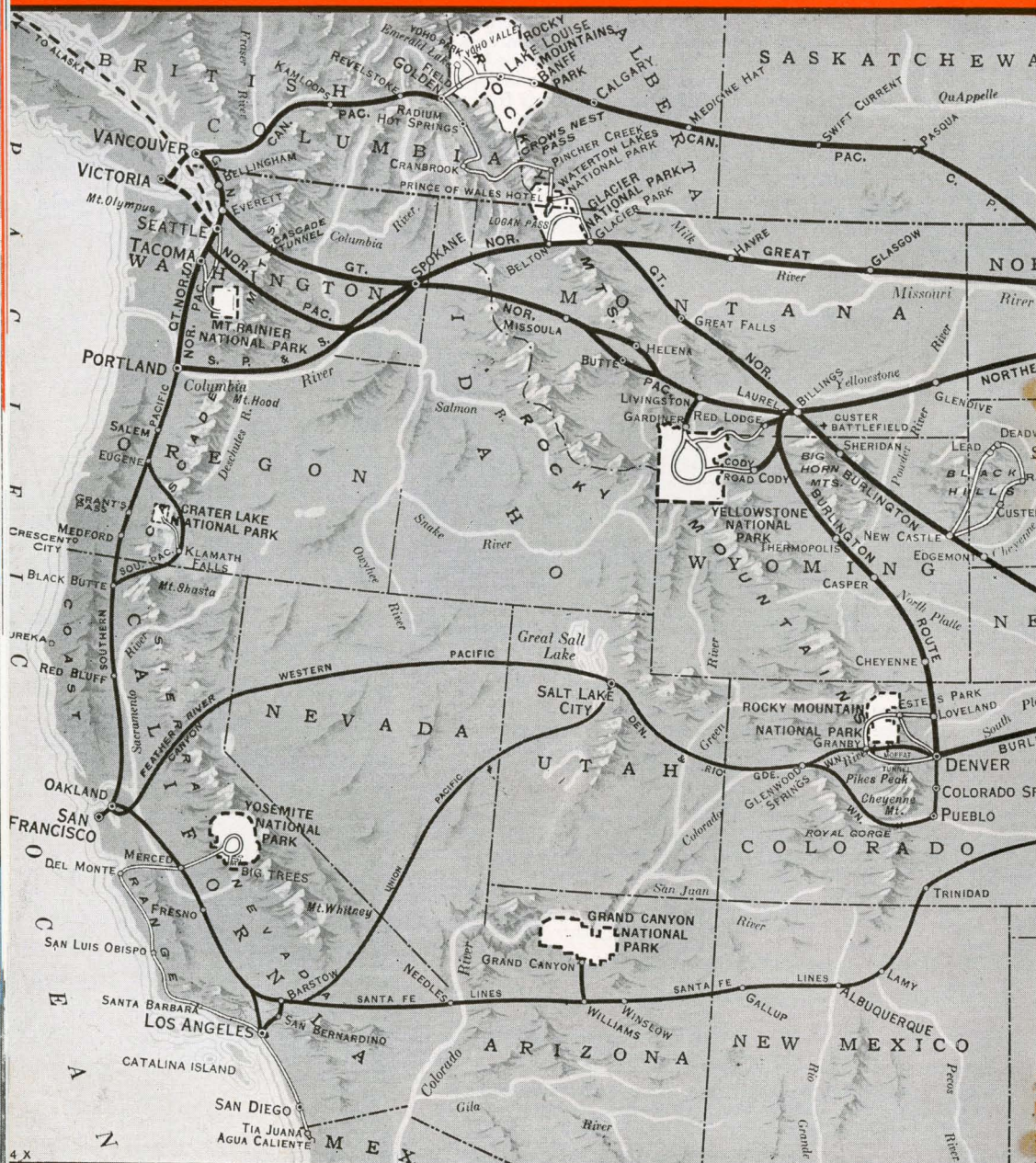
Without Bath—Single Room \$2.00. With Bath—Double Room (per person) \$4.00, Single Room \$6.00.

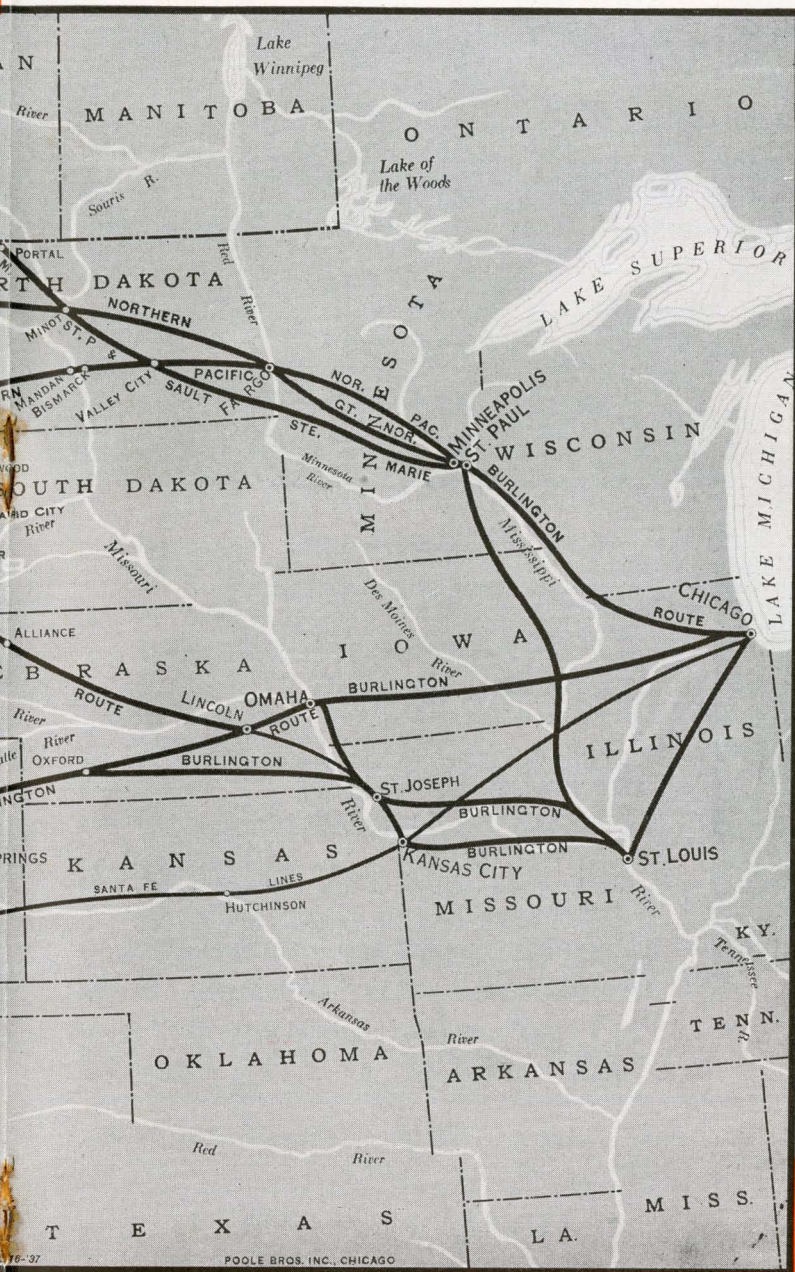


View of Canyon Hotel Lounge



Tower Falls in Yellowstone





These are the routes followed by Burlington Escorted Tours to the great vacationlands of the West . . . the fascinating places you have always wanted to visit. Here you can trace out the itinerary of the tour you decide to take. Where could you possibly find a greater variety of scenic routes or better opportunities for splendid tour combinations?



Norris Geyser Basin . . . a region  
of "Unearthly Sights and Fascinations"

## Yellowstone National Park

### TOUR J — 7 DAYS

#### Air-Conditioned Equipment Throughout

*Four days of fascinating adventure in Magic Yellowstone, with the thrilling Cody Road for a climax.*

Lv. CHICAGO . . . . . 11.00 PM Burlington . . . . . Sunday  
(Union Station) (C.S.T.)

Lv. ST. LOUIS . . . . . 2.15 PM Burlington . . . . . Sunday

St. Louis passengers join our Chicago contingent at St. Paul and together we spin westward in pursuit of happiness.

Lv. ST. PAUL . . . . . 8.35 AM Northern Pacific . . . Monday

Lv. MINNEAPOLIS . . 9.10 AM Northern Pacific . . Monday

Enroute on the air-conditioned flyer, "North Coast Limited," through Minnesota and the endless wheat fields of North Dakota. A short stop at Mandan for an entertaining "how!" with the Sioux Indians.

Ar. GARDINER . . . . . 11.00 AM Northern Pacific . . Tuesday

### FOUR DAYS IN YELLOWSTONE

Big motor cars await us, impatient to show us the wonders of Yellowstone. We wheel through the Roosevelt Memorial Arch into the midst of as strange a country as anywhere in the world. First to Mammoth Hot Springs, where we pause at the Park Museum before a good lunch. Close by are acres of steaming pools and springs spilling over fanciful rainbow-tinted rock terraces.

Away we go in our motors after luncheon, eastward to the Yellowstone River and Tower Falls, and then over Dunraven Pass to the Grand Canyon for our first

of many marvelous views of the colorful Canyon and Great Fall.

Overnight and Wednesday morning here with plenty of time in which to enjoy the scenic beauty of the stupendous Canyon. Leaving after luncheon Wednesday we come presently to the steaming acres of Norris Geyser Basin, followed in rapid succession by many other gushers and hot pools springing up wherever we go.

Presently we come upon Upper Geyser Basin, dominated by Old Faithful although but one of scores of strange phenomena here. In spite of all these counter-attractions, we wait to see Old Faithful let go with a roar, shooting a million and a half gallons of boiling water high into the air. What a thrill to see the world's most famous geyser swing into stupendous action every hour.

Thursday is "Believe It or Not" day, as we roam the geyser basin in company of a U. S. ranger who explains these queer phenomena. In spite of all he says, it still is hard for us to believe this strangest of lands actually exists.

From a scenic standpoint, Friday is a perfect day . . . motoring first over the Continental Divide and along Yellowstone Lake to see the paint pots at Thumb, the Dragon's Mouth and Mud Volcano. A brief stop for luncheon at Lake Hotel, then out over the Cody Road, a marvelous highway that has *everything* in the way of scenery, contrast and thrills. It's 80 glorious miles to Cody, Wyoming, and you'll board the train in the evening half dazed with this breathtaking journey through the heart of the Buffalo Bill country.

Lv. CODY . . . . . 7.40 PM Burlington . . . . . Friday

What's this? Sioux Indians at the station on arrival at Mandan, N. D. . . . not for war but a primitive farewell as we speed on homeward.

Ar. MINNEAPOLIS . . . 10.12 PM Northern Pacific . . Saturday

Ar. ST. PAUL . . . . . 10.45 PM Northern Pacific . . Saturday

Ar. CHICAGO . . . . . 8.45 AM Burlington . . . . . Sunday

Ar. ST. LOUIS . . . . . 5.10 PM *Your Choice* . . . . . Sunday

## COST OF COMPLETE TOUR

Tour includes all necessary expenses such as Pullman, \*Hotels (Two to a room, without bath), all Meals, and Auto Trips as shown in itinerary.

Costs "without rail ticket" are for the benefit of passengers coming from the East or South with through rail tickets.	From CHICAGO		†From ST. LOUIS	
	Without Railroad Ticket	With Railroad Ticket	Without Railroad Ticket	With Railroad Ticket
Two in Lower Berth (each)	\$60.63	\$107.58	\$61.65	\$110.50
One in Lower Berth . . . . .	69.75	116.70	70.55	119.40
One in Upper Berth . . . . .	66.10	113.05	67.00	115.85

\*Via Lodges in Yellowstone, \$1.00 less.

†No Meals or Pullman included between Chicago and St. Louis

APPROXIMATE ADDITIONAL COST FOR SPECIAL HOTEL ACCOMMODATIONS:  
Without Bath—Single Room \$1.50. With Bath—Double Room (per person) \$3.00, Single Room \$4.50. No rooms with bath are available at Yellowstone Lodges.

## CONDENSED ITINERARY

Lv. Chicago . . . . . Sun.

Lv. St. Louis . . . . . Sun.

Ar. Gardiner . . . . . Tue.

Four Days in Yellowstone.

Lv. Cody . . . . . Fri.

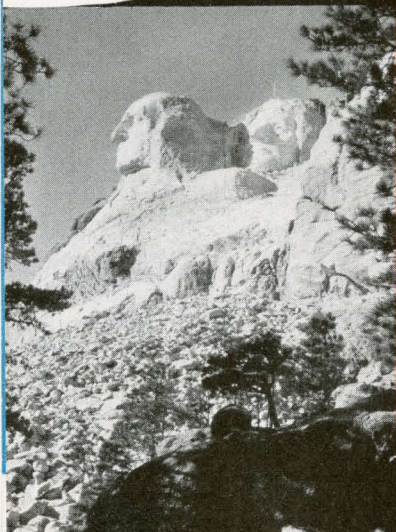
Ar. Chicago . . . . . Sun.

Ar. St. Louis . . . . . Sun.

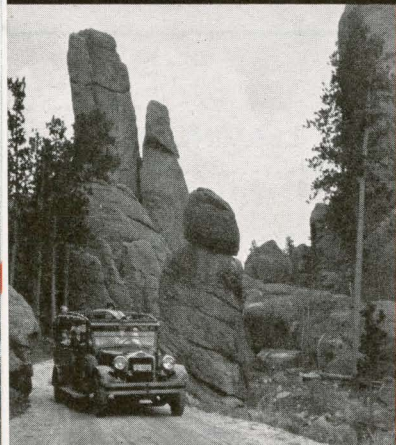
## LEAVING DATES

J-1 . . . . .	June 20
J-2 . . . . .	June 27
J-3 . . . . .	July 4
J-4 . . . . .	July 11
J-5 . . . . .	July 18
J-6 . . . . .	July 25
J-7 . . . . .	Aug. 1
J-8 . . . . .	Aug. 8
J-9 . . . . .	Aug. 15
J-10 . . . . .	Aug. 22
J-11 . . . . .	Aug. 29

# Black Hills and Yellowstone Park



Gutzon Borglum's Famous Sculptures



Motoring on the Needles Highway

## TOUR L — 9 DAYS

### Air-Conditioned Equipment Throughout

*Through two of Nature's greatest playgrounds . . . the romantic Black Hills of South Dakota and Yellowstone's Grotesque Nobility*

Lv. CHICAGO . . . . . 10.30 AM Burlington . . . . . Sunday  
(Union Station) (C.S.T.)  
Lv. ST. LOUIS . . . . . 2.00 PM Burlington . . . . . Sunday  
Ar. NEWCASTLE . . . . . 2.45 PM Burlington . . . . . Monday

### RECAPTURING THE OLD WILD WEST

Sleek motor cars carry us swiftly over a splendid new highway into one of the strangest regions in the country, rising like magic out of the flat surrounding plains.

Our first stop is Custer, named after General Custer when White Men and Red waged relentless warfare hereabouts. In French Creek, just at the edge of town, the first precious nuggets were found that began the famous Black Hills gold rush.

Entering Custer State Park we ascend Mt. Coolidge for a 50-mile panoramic view, then wheel on to the State Game Lodge for overnight.

Tuesday we skim through the shadowed Aisle of Pines and over Needles Highway, one of the weirdest motor roads anywhere. Countless monoliths of inconceivably grotesque shape and colossal size rear their unearthly heads to our startled gaze. Here it is that you "thread the needle's eye," a delightful experience.

Pausing for a view of gem-like Sylvan Lake, we spiral down through Harney Canyon to Mt. Rushmore. Here you can see the eminent sculptor, Gutzon Borglum, engaged in carving from the sheer granite face of the mountain heroic busts of Washington, Lincoln, Jefferson and Theodore Roosevelt. When completed these will be the greatest statues in the world.

Late in the afternoon we arrive in Deadwood, whose history fairly reeks with the romance and tradition of the Old West. Here Wild Bill Hickok, Calamity Jane, Preacher Smith and others lived and died.

Nearby is Lead, mining center of the Black Hills. Here is the great Homestake mine, largest gold property in North America and still going strong. After motor-ing to Mt. Roosevelt we stop overnight in Deadwood at the Franklin Hotel (rooms with bath). On next morning via spruce-lined Spearfish Canyon, down the stage coach trail through Ice Box Canyon and so to Newcastle and the train.

Lv. NEWCASTLE . . . . . 2.45 PM Burlington . . . . . Wednesday

Speeding westward, the Bighorn Mountains in full view. Later along the Little Bighorn River and through the Crow reservation in the heart of the region where the Custer Massacre took place.

Ar. GARDINER . . . . . 11.00 AM Nor. Pac. . . . . Thursday

## FOUR STRANGE DAYS IN YELLOWSTONE

Big yellow motor cars speed us into the park to Mammoth Hot Springs' boiling waters and grotesque terraces. Farther on we see our first geysers at Norris Basin, on the way to Upper Geyser Basin, the greatest geyser region in the world. While Old Faithful alone would be worth the trip, there are literally hundreds of hot water phenomena all over this region. Overnight at Old Faithful Inn or Lodge.

Friday afternoon we motor over the Continental Divide and along Yellowstone Lake—a trip of beauty and strangeness—for overnight at Lake Hotel (or Lodge).

Saturday morning we motor through Hayden Valley up to the Grand Canyon with an afternoon side trip over Dunraven Pass to Tower Falls and Sunday morning open to revel in the beauty of the Canyon and the Great Fall.

Our faithful motors call for us Sunday afternoon and we launch upon a thrilling climax . . . the 80-mile ride over the Cody Road. We penetrate deep forests, climb the Absarokas over Sylvan Pass, wind down through Buffalo Bill country along the Shoshone River and negotiate the great Shoshone Canyon, before arriving at Cody, Wyoming to board the train for home.

This year, for the first time, our tour guests have the option of leaving via the new Red Lodge Highway—a spectacular motor road that crosses a wonderful section of the Montana Rockies all the way to Red Lodge, Montana, and the train. (Extra cost \$6.50.)



State Game Lodge, Black Hills

## CONDENSED ITINERARY

Lv. Chicago . . . . .	Sun.
Lv. St. Louis . . . . .	Sun.
Ar. Newcastle . . . . .	Mon.
Two Days in the Black Hills.	
Lv. Newcastle . . . . .	Wed.
Ar. Gardiner . . . . .	Thur.
Four Days in Yellowstone.	
Lv. Cody . . . . .	Sun.
Ar. Chicago . . . . .	Tue.
Ar. St. Louis . . . . .	Tue.

Lv. CODY . . . . . 7.40 PM Burlington . . . . . Sunday

Enroute on the air-conditioned "North Coast Limited," happy in our memories of glorious scenes behind us. But one more is yet to come . . . a "full dress" Indian ceremony at Mandan, North Dakota. And so through Dakota wheat fields and Minnesota's "ten thousand lakes" to the Twin Cities.

Ar. MINNEAPOLIS . . . 10.12 PM Nor. Pac. . . . . Monday

Ar. ST. PAUL . . . . . 10.45 PM Nor. Pac. . . . . Monday

Ar. CHICAGO . . . . . 8.45 AM Burlington . . . . . Tuesday

Ar. ST. LOUIS . . . . . 5.10 PM *Your Choice* . . . . . Tuesday

## LEAVING DATES

L-1 . . . . .	July 4
L-2 . . . . .	July 11
L-3 . . . . .	July 18
L-4 . . . . .	July 25
L-5 . . . . .	Aug. 1
L-6 . . . . .	Aug. 8
L-7 . . . . .	Aug. 15
L-8 . . . . .	Aug. 22

## COST OF COMPLETE TOUR

Tour includes all necessary expenses such as Pullman, \*Hotels (Two to a room, without bath), all Meals, and Auto Trips as shown in itinerary.

Costs "without rail ticket" are for the benefit of passengers coming from the East or South with through rail tickets.	From CHICAGO		†From ST. LOUIS	
	Without Railroad Ticket	With Railroad Ticket	Without Railroad Ticket	With Railroad Ticket
Two in Lower Berth (each)	\$ 99.63	\$146.58	\$ 98.40	\$147.25
One in Lower Berth . . . . .	108.75	155.70	107.30	156.15
One in Upper Berth . . . . .	105.10	152.05	103.75	152.60

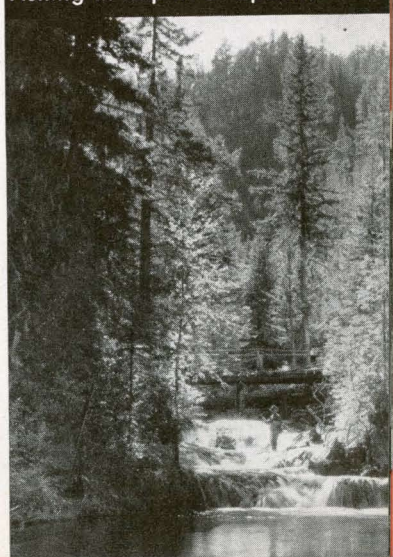
\*Via Lodges in Yellowstone, \$1.00 less.

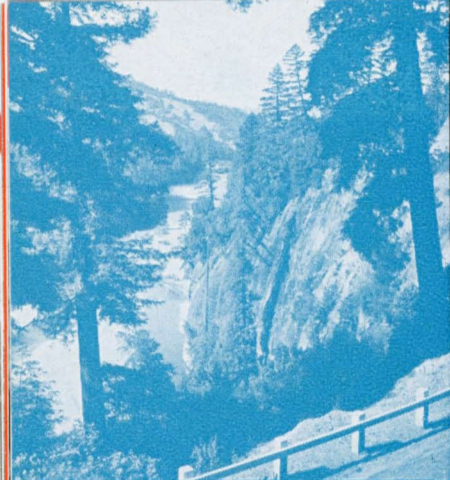
†No Meals or Pullman included between Chicago and St. Louis.

APPROXIMATE ADDITIONAL COST FOR SPECIAL ACCOMMODATIONS:

Without Bath—Single Room \$3.00. With Bath—Double Room (per person) \$3.75, Single Room \$5.25. No rooms with bath available at State Game Lodge or Yellowstone Lodges.

## Fishing in Rapids of Spearfish Creek





In the Redwood Empire

*Right*—Shadowed Courtyard  
of Southern California . . . land  
of Sunny Skies and Romance.  
*Below*—Unbelievably Blue  
Waters of Crater Lake, in the  
Forests of Oregon.



# California and the Pacific Northwest

Visiting the scenic wonders and  
famed cities of the Pacific Coast

## TOUR N—14 Days

### Air-Conditioned Equipment Throughout

Lv. CHICAGO.....10.30 AM Burlington.....Sunday  
(Union Station) (C.S.T.)

Lv. ST. LOUIS..... 2.00 PM Burlington.....Sunday

Ar. DENVER..... 1.15 PM Burlington.....Monday

On arrival in this charming western city we have time for a brief sightseeing tour of the business district, city parks and residential section. Leave Denver on a new route that actually pierces *beneath* the Colorado Rockies via the six-mile Moffat Tunnel, bored through James Peak a mile below its summit. Emerging from the west portal we follow the Colorado River over the heralded Dotsero Cut-Off.

Ar. SALT LAKE CITY. 7.30 AM D. & R. G. W..Tuesday

An enjoyable motor trip to the famous Mormon Temple and Tabernacle, the State Capitol, parks, boulevards and fine residences.

Lv. SALT LAKE CITY..10.00 AM Un. Pac.....Tuesday

Ar. LOS ANGELES..... 8.30 AM Un. Pac.....Wednesday

We transfer at once to the Biltmore Hotel, one of the West's famed hostelryes, our headquarters while in Los Angeles. Rooms with bath are provided. After an open morning to refresh ourselves, we motor around Hollywood to see the homes of movieland, in Beverly Hills, and the beaches at Santa Monica.

Wide experience with California tours has taught us that our guests want no restrictions on their time in Los Angeles. Thus, Thursday and Friday are free to do as you please. You take your meals where you wish

## CONDENSED ITINERARY

Lv. Chicago.....Sun.  
Lv. St. Louis.....Sun.  
Ar. Denver.....Mon.  
Ar. Salt Lake.....Tue.  
Ar. Los Angeles.....Wed.  
Three Days in Los Angeles.  
Ar. Yosemite.....Sat.  
One Day in Yosemite Park.  
Ar. San Francisco.....Sun.  
Ar. Crater Lake.....Tue.  
Ar. Portland.....Wed.  
Ar. Seattle.....Wed.  
Lv. Seattle.....Thur.  
Ar. Chicago.....Sun.  
Ar. St. Louis.....Sun.

## LEAVING DATES

N-1.....June 27  
N-2.....July 4  
N-3.....July 11  
N-4.....July 18  
N-5.....Aug. 1  
N-6.....Aug. 8  
N-7.....Aug. 15

and pay as you go . . . a sensible, carefree way to see this cosmopolitan city.

Lv. LOS ANGELES... 6.00 PM Sou. Pac.....Friday  
Ar. YOSEMITE.....10.50 AM Motor.....Saturday

We have until Sunday afternoon for roaming through the splendor of this great park, an outdoor wonderland. Overnight in artistic, comfortable bungalows (with bath) at Camp Curry. After luncheon Sunday, down to our train again.

Ar. SAN FRANCISCO. 9.30 PM Sou. Pac.....Sunday

After a night in rooms with bath at the William Taylor Hotel we motor throughout this colorful city, to the Presidio, Cliff House, Golden Gate Park and the residential sections, parks and boulevards. We also obtain fine views of the two tremendous bridges that now stretch across San Francisco Bay, one bridging world famous Golden Gate, the other leading to Oakland where we board our train for the Pacific Northwest.

Ar. KLAMATH FALLS. 6.30 AM Sou. Pac.....Tuesday

Motoring to Crater Lake National Park, we spend the afternoon marveling at the beauty of the most incredibly blue waters we have ever seen and boating on the placid lake.

Ar. PORTLAND..... 7.30 AM Sou. Pac.....Wednesday

After breakfast at the Multnomah Hotel we motor over the wonderful Columbia River Highway, the road the Covered Wagons took when the Northwest was first being settled.

Ar. SEATTLE..... 5.30 PM Nor. Pac.....Wednesday

Overnight at the fine New Washington Hotel (rooms with bath are assigned us, of course). Motoring Thursday morning around this famous seaport to see the parks and better residential sections.

Lv. SEATTLE.....\*9.15 PM or † 10.15 PM....Thursday

Homeward bound on one of these crack transcontinental flyers, both completely air conditioned.

Ar. MINNEAPOLIS...\*10.12 PM or † 10.00 PM....Saturday

Ar. ST. PAUL.....\*10.45 PM or † 10.30 PM....Saturday

Ar. CHICAGO..\*8.45 AM or † 8.40 AM..Burlington..Sunday

Ar. ST. LOUIS..... 5.10 PM *Your Choice*.....Sunday

\*Tours 2-4-6 via Northern Pacific, the "North Coast Limited."  
†Tours 1-3-5-7 via Great Northern, the "Empire Builder."

## COST OF COMPLETE TOUR

Tour includes all necessary expenses such as Pullman, Hotels (Two to a room, with bath), Auto Trips as shown in itinerary, and all Meals except as otherwise stated.

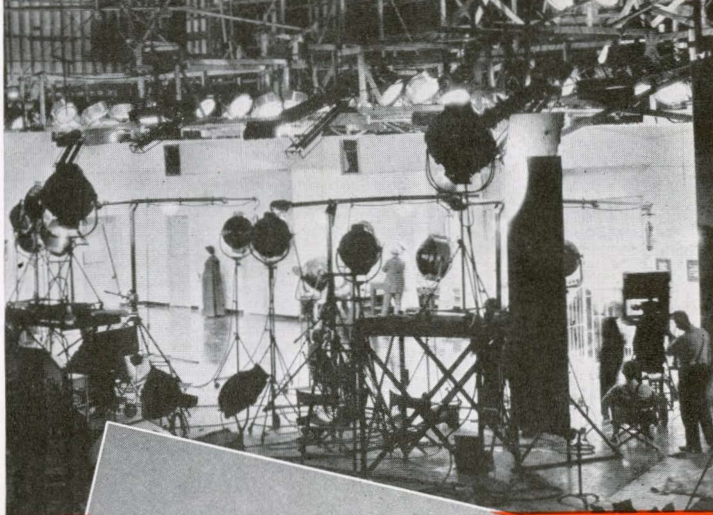
Costs "without rail ticket" are for the benefit of passengers coming from the East or South with through rail tickets.	From CHICAGO		*From ST. LOUIS	
	Without Railroad Ticket	With Railroad Ticket	Without Railroad Ticket	With Railroad Ticket
Two in Lower Berth (each)	\$120.53	\$206.53	\$119.15	\$202.90
One in Lower Berth.....	142.40	228.40	140.65	224.40
One in Upper Berth.....	133.65	219.65	132.05	215.80

\*No Pullman or Meals included between Chicago and St. Louis  
Additional for Single Rooms \$5.50.

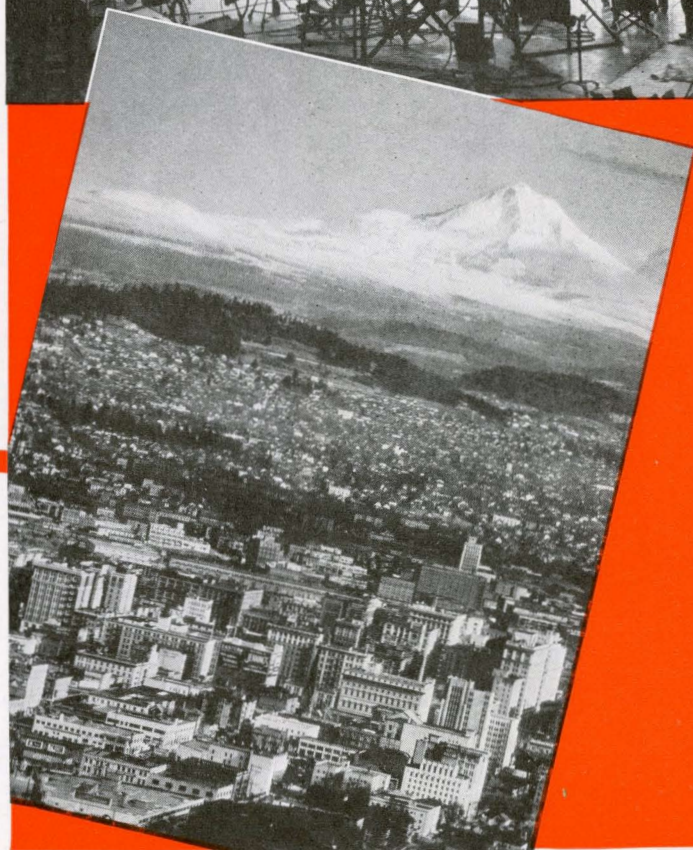
A Lovely Fern-bordered Lane in one of the Beautiful Parks for which Seattle is known

Unforgettable: the Feathery Cascade of Yosemite Falls

Where Movies are made . . . in  
a Hollywood Studio during the  
"Shooting" of a Star Picture



Mt. Hood's snow-capped Summit 11,225 feet high, towers  
over Portland the "Rose City"



"The Fleet's In!"—their piercing  
searchlights make a Fairy-  
land of San Francisco's Harbor



# California • Pacific Northwest • Canadian Rockies

## CONDENSED ITINERARY

Lv. Chicago	Sun.
Lv. St. Louis	Sun.
Ar. Denver	Mon.
Ar. Salt Lake	Tue.
Ar. Los Angeles	Wed.
Three Days in Los Angeles.	
Ar. Yosemite	Sat.
Ar. San Francisco	Sun.
Ar. Crater Lake	Tue.
Ar. Portland	Wed.
Ar. Tacoma	Wed.
Ar. Rainier	Thur.
Ar. Seattle	Fri.
Ar. Victoria	Sat.
Ar. Vancouver	Sun.
Ar. Lake Louise	Tue.
Lv. Banff	Thur.
Ar. Chicago	Sat.
Ar. St. Louis	Sat.

## LEAVING DATES

NF-1	June 27
NF-2	July 4
NF-3	July 11
NF-4	July 18
NF-5	Aug. 1
NF-6	Aug. 8
NF-7	Aug. 15

## TOUR NF—21 DAYS

**Air-Conditioned Equipment Throughout  
Rooms with Bath wherever we stop**

Lv. CHICAGO.....10.30 AM Burlington.....Sunday  
(Union Station) (C.S.T.)

Aboard the crack air-conditioned "Aristocrat."

Lv. ST. LOUIS..... 2.15 PM Burlington.....Sunday

Ar. DENVER..... 1.15 PM Burlington.....Monday

Time enough for a leisurely sightseeing trip about the famous "Mile-High Queen of the Rockies."

Lv. DENVER..... 4.00 PM D. & R. G. W. Monday

Over the newest route to California... via the Moffat Tunnel through six miles of solid rock, along the tumbling Colorado, over the Dotsero Cut-Off and through Glenwood Springs into Utah.

Ar. SALT LAKE CITY . 7.30 AM D. & R. G. W. Tuesday

We motor about to see the Temple and renowned Tabernacle (constructed without a single nail), the State Capitol and other interesting places.

Ar. LOS ANGELES..... 8.30 AM Un. Pac. .... Wednesday

Morning in a bright new world, the orange groves and verdure of Southern California. Arriving in the Capital of Moviedom, we transfer to the Los Angeles Biltmore Hotel before a motor tour to Hollywood, Beverly Hills, Santa Monica and the colorful beaches.

Our tour includes rooms with bath at the Biltmore and the sightseeing trip. No other set program is provided because our guests always prefer to travel "on their own" while in this fascinating city. You will want to come and go at will, making the most of your time, "watching the stars come out at night" in unique eating places. Take your meals where you wish and pay as you go. No schedules of any kind. This, we have discovered, is the only real way to see Los Angeles.

Lv. LOS ANGELES.... 6.00 PM Sou. Pac.....Friday

Ar. YOSEMITE.....10.50 AM By Motor.....Saturday

Twenty-four hours and more in the unparalleled scenic charms of Yosemite National Park, marveling at majestic El Capitan, the exquisite Falls and other sights. Headquarters at Camp Curry, in picturesque bungalows.

## COST OF COMPLETE TOUR

Tour includes all necessary expenses such as Pullman, Hotels (Two to a room, with bath), Auto Trips as shown in itinerary, and all Meals except as otherwise stated.

Costs "without rail ticket" are for the benefit of passengers coming from the East or South with through rail tickets.	From CHICAGO		*From ST. LOUIS	
	Without Railroad Ticket	With Railroad Ticket	Without Railroad Ticket	With Railroad Ticket
Two in Lower Berth (each)	\$191.05	\$277.05	\$189.68	\$273.43
One in Lower Berth.....	212.80	298.80	211.05	294.80
One in Upper Berth.....	204.10	290.10	202.50	286.25

\*No Pullman or Meals included between Chicago and St. Louis. Additional for Single Rooms \$11.25.

Lv. YOSEMITE..... 2.00 PM By Motor..... Sunday

Ar. SAN FRANCISCO... 9.30 PM Sou. Pac..... Sunday

An interesting night and day in this cosmopolitan city of the Coast, putting up at the William Taylor Hotel. Sightseeing trip Monday morning, leaving plenty of time to visit Chinatown, see the ships along the Embarcadero, and enjoy tremendous views of the great new bridges over the bay to Oakland and across the famous Golden Gate.

Ar. KLAMATH FALLS... 7.30 AM Sou. Pac..... Tuesday

We motor off through Oregon's forests to Crater Lake National Park, one of America's outstanding spectacles. Long ago a tremendous explosion blew off the mountain top and in the crater a great lake formed, whose waters possess a shade of blue unequaled anywhere on earth.

Ar. PORTLAND..... 7.30 AM Sou. Pac.... Wednesday

At home in the "City of Roses," with the morning devoted to a memorable drive over Columbia River Highway to Horsetail Falls and back.

Ar. TACOMA..... 4.38 PM Nor. Pac.... Wednesday

A restful night at the Winthrop Hotel, then on to great adventure. Motors take us off to Paradise Inn, in a flower-carpeted valley of Rainier National Park. Glorious fun at the nearby glacier and on the slopes of noble Mt. Rainier.

Next morning motor down the mountain and to Seattle. Sightseeing this afternoon. Overnight at the Olympic Hotel.

Ar. VICTORIA..... 12.45 PM Can.Pac.S.S.... Saturday

Twenty-four hours in the island capital of British Columbia... motoring in the afternoon, overnight at the splendid Empress Hotel, arising late Sunday and enjoying our restful hours in "a bit of Old England."

Ar. VANCOUVER..... 5.55 PM Can.Pac.S.S..... Sunday

Overnight at the Georgia Hotel. Next morning an enjoyable motor ride to Stanley Park, Shaughnessy Heights, the foreign quarter, etc.

Lv. VANCOUVER..... 6.55 PM Can.Pac.Ry... Monday

Ar. FIELD..... 1.25 PM Can.Pac.Ry... Tuesday

In the midst of mountainland, we motor to Emerald Lake then via Kicking Horse Canyon and Yoho Valley to exquisite Lake Louise where we put up overnight at the wonderful Chateau. Next morning is ours to revel in the glorious scenery, before we motor on via Johnson Canyon to Banff and the luxurious Banff Springs Hotel on the Bow River.

Lv. BANFF..... 6.50 PM Can.Pac.Ry... Thursday

Ar. MINNEAPOLIS.... 6.55 AM Soo Line..... Saturday

Ar. ST. PAUL..... 7.35 AM Soo Line..... Saturday

Ar. CHICAGO..... 3.00 PM Burlington.... Saturday

Ar. ST. LOUIS..... 9.45 PM Your Choice.... Saturday



Through the Pines to Emerald Lake



The Palms of Southern California

# Colorado • California • Grand Canyon

## TOUR O—14 DAYS

**Air-Conditioned Equipment Throughout  
Rooms with Bath wherever we stop**

*A two-weeks tour of Colorado's mountainlands, the fascinating charm of California, and the incomparable scenery of Grand Canyon*

Lv. CHICAGO.....10.30 AM Burlington.....Sunday  
(Union Station) (C.S.T.)

Westbound in air-conditioned luxury aboard the crack "Aristocrat," one of the finest of trains.

Lv. ST. LOUIS..... 2.00 PM Burlington.....Sunday

Ar. DENVER..... 1.15 PM Burlington.....Monday

We stop for four hours in this interesting Western metropolis and enjoy a sightseeing trip around the park and residential sections.

Lv. DENVER..... 5.00 PM D. & R. G. W. Monday

Climbing into the Colorado Rockies on the newest of Pacific Coast routes, we plunge *underneath* the Continental Divide through six miles of rock pierced by the Moffat Tunnel. Then over the splendid new Dotsero Cut-Off and along the Colorado River into Utah.

Passing through Salt Lake City at 7.30 AM Tuesday, we skirt the shores of Great Salt Lake, where we see miles of salt beds drying in the sun, then speed across the Great American Desert into California.

Ar. SAN FRANCISCO... 8.50 AM Westn. Pac. Wednesday

You'll never forget our approach to this great city. Arriving at Oakland we cross the bay by ferry, in full view of the mighty bridge that spans the harbor. From the famous Ferry Building we go to the Hotel Sir Francis Drake, then spend the morning in a motor tour of the Civic Center, Golden Gate Park, Presidio and other charming scenes. The afternoon and evening are left open.

Lv. SAN FRANCISCO... 8.00 AM Sou. Pac. Thursday

Ar. MERCED.....12.28 PM Sou. Pac. Thursday

Right after lunch we motor into the mountains to the incomparable Yosemite Valley for a full day, putting up in the charming bungalows of Camp Curry. In the evening we have a grand treat, the spectacular "Fire Falls." Friday is yours to explore this wonderful playground, motoring, hiking, riding where you will. After dinner we motor down to Merced and the train to new adventures.

Lv. MERCED.....11.00 PM Sou. Pac. Friday

Ar. LOS ANGELES.... 8.50 AM Sou. Pac. Saturday

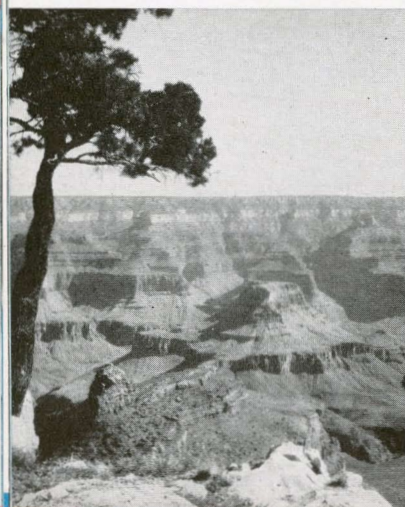
One of the most individual cities in the world ... the home of the movie stars. We see where they reside when we motor through Hollywood and Beverly Hills Saturday, and when we come to the ocean at the Santa Monica beaches we also see where they play.

Because you will want to do as you please in Los Angeles, no program is arranged for Saturday afternoon, Sunday and Monday. Our tour includes accommodations at the Hotel Biltmore. You are free to come and go at will, eating wherever you like and paying for your meals as you go, rubbing elbows with famous actors

### LEAVING DATES

O-1.....	June 13
O-2.....	June 27
O-3.....	July 4
O-4.....	July 11
O-5.....	July 18
O-6.....	Aug. 1
O-7.....	Aug. 8
O-8.....	Aug. 15

On the brink of the awesome  
Grand Canyon of Arizona, the  
World's most Colossal Abyss



and actresses, perhaps taking side trips to Catalina, Mt. Lowe, Mt. Wilson, Pasadena, Riverside, the fascinating movie lots, etc.

Tuesday morning we motor down the shores of the blue Pacific to romantic San Diego, where we put up at the U. S. Grant Hotel for the night. The tour includes a motor trip around San Diego, Sunset Cliffs and Ramona's Marriage Place.

Back along the chain of Pacific beaches Wednesday to board our train for new adventures.

Lv. LOS ANGELES... 12.15 PM Santa Fe... Wednesday

Speeding East through charming suburban towns and orange groves... typical California scenery. Out of San Gabriel Valley and over the San Bernardino range of mountains at Cajon Pass. Beyond lies the famous Mojave Desert.

Ar. GRAND CANYON... 7.45 AM Santa Fe... Thursday

What a sight is in store for us! All day we view the marvel of Grand Canyon, one of the seven wonders of the modern world. You'll never tire of motoring along the breath-taking rim, peering down into the depths a mile below, or seeking vantage points of your own choosing afoot. We motor to Hermit's Rest in the morning, and back to the illustrious El Tovar Hotel for all meals.

Lv. GRAND CANYON... 8.00 PM Santa Fe... Thursday

Homeward bound the Southern route, through New Mexico and the wheat fields of Kansas. Stopping briefly at Albuquerque, you see a wonderful exhibit of Indian craftsmanship... hammered silver, rugs, blankets, beadwork, fine turquoise, etc.

Ar. KANSAS CITY... 5.00 PM Santa Fe... Saturday

Ar. ST. LOUIS... 7.45 AM Burlington... Sunday

Ar. CHICAGO... 7.40 AM Santa Fe... Sunday  
(Dearborn Station) (C.S.T.)

## CONDENSED ITINERARY

Lv. Chicago.....Sun.  
Lv. St. Louis.....Sun.  
Lv. Denver.....Mon.  
Lv. Salt Lake.....Tue.  
Ar. San Francisco.....Wed.  
Ar. Yosemite.....Thur.  
One Day at Yosemite.  
Ar. Los Angeles.....Sat.  
Three days in Los Angeles.  
One day in San Diego.  
Ar. Grand Canyon.....Thur.  
One day at Grand Canyon.  
Ar. St. Louis.....Sun.  
Ar. Chicago.....Sun.

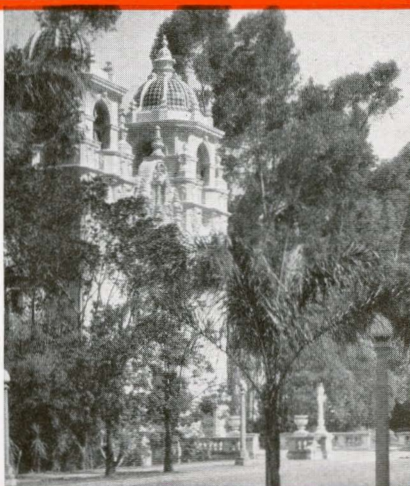
One of the exquisite buildings in Balboa Park, long a popular San Diego show place

## COST OF COMPLETE TOUR

Tour includes all necessary expenses such as Pullman, Hotels (Two to a room, with bath), Auto Trips as shown in itinerary, and all Meals except as otherwise stated.

Costs "without rail ticket" are for the benefit of passengers coming from the East or South with through rail tickets.	From CHICAGO		From ST. LOUIS	
	Without Railroad Ticket	With Railroad Ticket	Without Railroad Ticket	With Railroad Ticket
Two in Lower Berth (each)	\$102.15	\$195.75	\$100.40	\$189.50
One in Lower Berth.....	120.65	214.25	118.15	207.25
One in Upper Berth.....	113.25	206.85	111.05	200.15

Additional for Single Rooms \$6.50.



# California Wonder Tour

## TOUR P — 19 DAYS

**Air-Conditioned Equipment Throughout  
Rooms with Bath wherever we stop**

*A rare travel value that takes you to more wonderful places than you could possibly enjoy for the same cost in independent travel.*

Lv. CHICAGO . . . . . 10.30 AM Burlington . . . . . Sunday  
(Union Station) (C.S.T.)

The famous "Aristocrat," the Burlington's crack air-conditioned flyer, takes us westward.

Lv. ST. LOUIS . . . . . 2.00 PM Burlington . . . . . Sunday

Ar. DENVER . . . . . 1.15 PM Burlington . . . . . Monday

A three-hour sightseeing trip gives you opportunity to see the most interesting places in this mile-high city. Leaving at 5.00 PM we plunge into the mountains, reaching Salt Lake City Tuesday morning.

As our train skirts the southern edge of Great Salt Lake, we pass tremendous salt beds along the shore. Later in the afternoon we speed across the Great American Desert.

Ar. SAN FRANCISCO . . 8.50 AM Westn. Pac. . . . Wednesday

Crossing the bay from Oakland by ferry, we pass under one of the two vast bridges now just completed. Headquarters are at the Hotel Sir Francis Drake. This morning we motor to San Francisco's points of interest, with the afternoon and all day Thursday open.

Lv. SAN FRANCISCO. 8.00 AM By Motor . . . . . Friday

*A wonderful feature of this tour is the fact that we motor all the way from San Francisco to Los Angeles, stopping overnight at some of the outstanding showplaces of the Pacific Coast and many of the most fascinating scenic regions of California.*

Motor cars speed us off through wonderful fruit orchards and Merced Canyon to Yosemite, the most strikingly beautiful valley in the world. We spend the night in picturesque bungalow cabins deep in the trees at Camp Curry. Saturday morning is a glorious time for exploring the great spectacle around us, visiting El Capitan, the exquisite Falls dropping in rainbow mists, roaming all about.

In the afternoon we continue our journey, motoring back to Merced, and then through the San Joaquin Valley, passing over Pacheco Pass into a marvelous fruit section.

Ar. DEL MONTE . . . . 7.00 PM By Motor . . . . . Saturday

Famous Del Monte! . . . one of the most luxurious of hotels . . . welcomes us overnight. Close by is the historic town of Monterey, facing out across the glorious blue waters of the bay. You will enjoy the fascinating auto trip, including the 17-mile drive, charming Carmel, and Carmel Mission.

Leaving Del Monte after breakfast Sunday, we motor down the Salinas Valley through Paso Robles and Santa Maria, then along a famous stretch of coastline to Santa Barbara where we spend an enjoyable night



Gore Canyon near Moffat Tunnel

at the Mar Monte Hotel. Monday morning is devoted to a motor trip about this romantic city, visiting the old Mission and Montecito residential district. Afterward we motor along the seashore, stopping at Malibu Beach.

Ar. LOS ANGELES... 5.30 PM By Motor..... Monday

Four days in Movieland, with headquarters at the Biltmore until Saturday morning. Tuesday morning offers a sightseeing trip that includes Hollywood, Beverly Hills and the colorful beaches; Tuesday afternoon, a motor trip to Pasadena.

Wednesday we take a train to Wilmington where we mount the gangplank of the steamer that takes us to Catalina Island, isle of sport and pleasure. You certainly will enjoy the afternoon's trip in a glass-bottomed boat to view the famed submarine gardens.

The rest of the time is your own. Because you will not want to be bothered with hours or schedules, our tour wisely excludes meals. These you will enjoy with friends or relatives, perhaps endeavor (as many do) to eat every meal in a different place, or take a bite "on the run" as you make the most of your sightseeing opportunities.

Saturday morning, our party wheels off through Long Beach, the great oil fields, La Jolla, and down to San Diego where we put up at the U. S. Grant Hotel. Sunday includes an auto trip around San Diego.

Northward again by motor Monday, along the coast via La Jolla, San Juan de Capistrano and Santa Ana. A delightful way to reenter Los Angeles.

Lv. LOS ANGELES... 12.15 PM Santa Fe..... Monday

Ar. GRAND CANYON.. 7.45 AM Santa Fe..... Tuesday

The entire day is ours to revel in breath-taking vistas of the world's most colossal chasm, a mighty gorge that defies mortal description. Every moment is packed with thrills and sensational scenery. In the morning we motor along the south rim to Hermit's Rest and in the afternoon seek our own vantage points from which to view the mile-deep depths. All our meals are provided at the picturesque El Tovar.

Lv. GRAND CANYON.. 8.00 PM Santa Fe..... Tuesday

Ar. KANSAS CITY.... 5.00 PM Santa Fe..... Thursday

Ar. ST. LOUIS..... 7.45 AM Burlington..... Friday

Ar. CHICAGO..... 7.40 AM Santa Fe..... Friday  
(Dearborn Station)

## COST OF COMPLETE TOUR

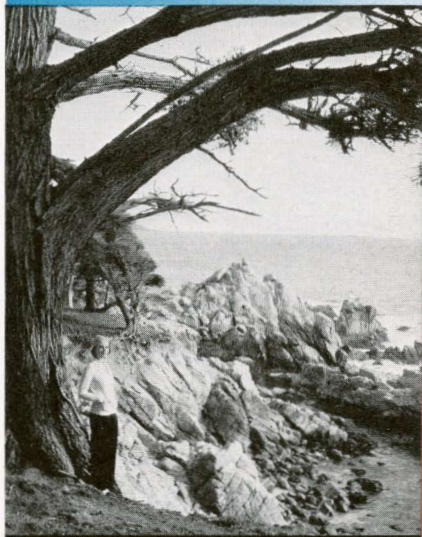
Tour includes all necessary expenses such as Pullman, Hotels (Two to a room, with bath), Auto Trips as shown in itinerary, and all Meals except as otherwise stated.

Costs "without rail ticket" are for the benefit of passengers coming from the East or South with through rail tickets.	From CHICAGO		From ST. LOUIS	
	Without Railroad Ticket	With Railroad Ticket	Without Railroad Ticket	With Railroad Ticket
Two in Lower Berth (each)	\$172.80	\$266.40	\$171.05	\$260.15
One in Lower Berth.....	190.05	283.65	187.55	276.65
One in Upper Berth.....	183.15	276.75	180.95	270.05

Additional charge made for Single Rooms at Hotels, \$12.50.

## CONDENSED ITINERARY

Lv. Chicago.....Sun.  
Lv. St. Louis.....Sun.  
Ar. Denver.....Mon.  
Ar. San Francisco.....Wed.  
Ar. Yosemite.....Fri.  
Ar. Del Monte.....Sat.  
Ar. Santa Barbara.....Sun.  
Ar. Los Angeles.....Mon.  
Four days in Los Angeles.  
One day at Catalina.  
Ar. San Diego.....Sat.  
Ar. Grand Canyon.....Tue.  
Ar. Chicago.....Fri.  
Ar. St. Louis.....Fri.



Cypress-Lined Shore near Del Monte

## LEAVING DATES

P-4.....July 4  
P-5.....July 11  
P-6.....July 18  
P-7.....Aug. 1  
P-8.....Aug. 8  
P-9.....Aug. 15

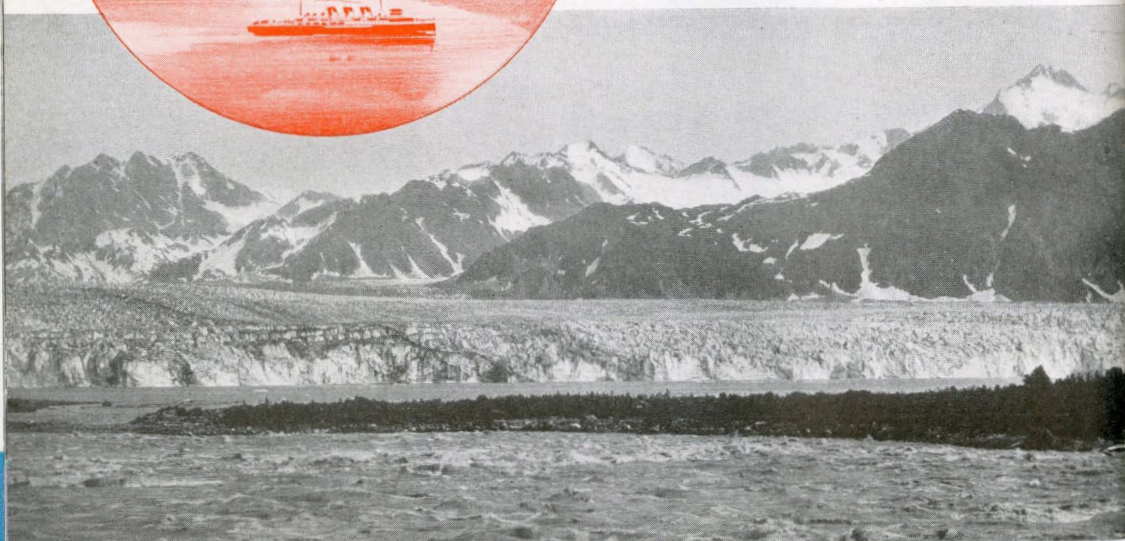
# *Tour Alaska this Summer*

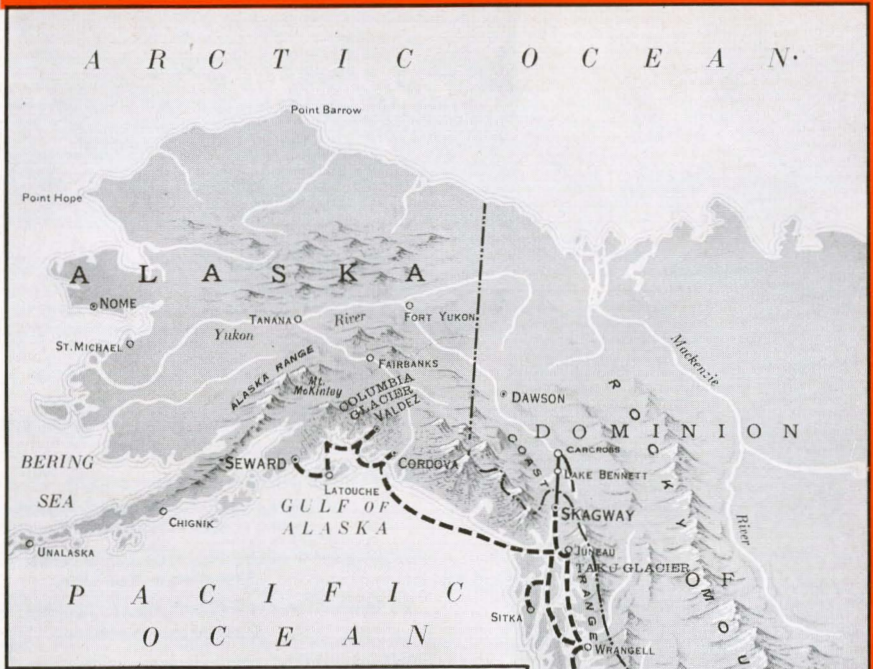
... A CAPTIVATING EXPERIENCE

What manner of vacation experience could be more captivating of the imagination, more fraught with the charm of adventure and fuller of educational advantage than an Alaskan tour? This vast untouched wilderness, once known as "Seward's Folly" (how very wrong those early scoffers proved to be!), is America's last frontier, our own "foreign land" as well worth seeing as any of the famous regions of the world.

An Alaskan tour means cruising lazily over the placid waters of the Inside Passage, day after eventful day on romantic sheltered seas, northward along a thousand-mile course that threads an endless pattern of mountains, islands, seas, forests and glaciers. Friendly decks, congenial shipmates, sparkling nights, invigorating sea air—and not a care in the world. Frequently your sturdy ship stops along the way, and at every port your shore leave opens new doors to adventurous experiences . . . constantly changing, fascinating pleasures.

At Ketchikan you see a city built for the most part out over the water. Wrangell, colorful with Indian legend, brings you face to face with weird totem poles. Historic Sitka, the capital under the Russian domain of empire before Alaska was bought by the U. S. for two cents an acre. Juneau, present capital of





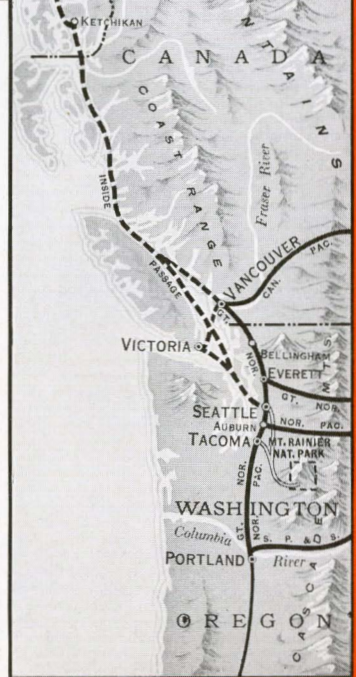
Alaska, rich with interest for the traveler. On the mountainside, above the town, is the famed Alaska-Juneau gold mine. Not far distant is the great Taku Glacier, a mighty river of ice.

Then there is Skagway, town of romance . . . center of those mad whirlpool days of the gold rush, those flaming times when gold-crazed humanity poured through Skagway in a mighty stream bound over the tragic "Trail of '98" into the fabulous Yukon.

Still farther north is Cordova, known as the "copper gateway" city . . . then comes the thrilling spectacle of Columbia Glacier. Nearby too is Valdez, built on a dead glacier. Seward on land-locked Resurrection Bay is the portal to the wilderness interior.

Any port of call brings new romance and adventure in this virile land of exaggerations. You may always have thought of Alaska as a forbidding land of ice and igloos . . . not so! Warm Pacific winds and fresh mountain breezes conspire for a refreshingly mild and stimulating vacation climate. There are myriads of flowers, vegetables and fruits of unbelievable size, great verdant forests, and everywhere bright sunshine.

ALASKA! Klondike gold . . . totem poles . . . strange races and quaint customs . . . the living ice rivers . . . copper mines . . . salmon fisheries . . . the Northern Lights. A glorious trip to and through a wonderful new frontier, where wild flowers abound at the foot of eternal glaciers, and all is new and different.



# Alaska

- Pacific Northwest
- Seward

## CONDENSED ITINERARY

Lv. Chicago.....	Sun.
Lv. St. Louis.....	Sun.
Ar. Portland.....	Wed.
Ar. Rainier.....	Thur.
Ar. Seattle.....	Fri.
Lv. Seattle.....	Sat.
Twelve-day Sea Voyage.	
Ar. Seward.....	Fri.
Ar. Seattle.....	Thur.
AMERICAN TOUR.	
Lv. Seattle.....	Thur.
Ar. Chicago.....	Sun.
Ar. St. Louis.....	Sun.
CANADIAN TOUR.	
Ar. Victoria.....	Sat.
Ar. Vancouver.....	Sun.
Ar. Lake Louise.....	Tue.
Ar. Banff.....	Wed.
Ar. Chicago.....	Sat.
Ar. St. Louis.....	Sat.

## LEAVING DATES

Tour R-1.....	June 20
Tour R-2.....	June 27
Tour R-3.....	July 4
Tour R-4.....	July 11
Tour R-5.....	July 18
Tour R-6.....	July 25
Tour R-7.....	Aug. 1
Tour R-8.....	Aug. 8

## TOUR R—21 or 28 DAYS

Air-Conditioned Equipment Throughout  
Rooms with Bath at All Hotels

21 Days—Pacific Northwest, Alaska, return via  
American Rockies.

28 Days—Pacific Northwest, Alaska, return via  
Canadian Rockies.

*(Burlington escort accompanies tours to and from Seattle.)*

Lv. CHICAGO.....	*11.00 or †11.15 PM (C.S.T.)	Burlington.....	Sunday
(Union Station)			
Lv. ST. LOUIS.....	2.00 PM	Burlington.....	Sunday
Lv. ST. PAUL.....	*8.35 AM or †8.50 AM.....		Monday
Lv. MINNEAPOLIS.....	*9.10 AM or †9.25 AM.....		Monday
*Tours 1-3-5-7 via Northern Pacific "North Coast Limited."			
†Tours 2-4-6-8 via Great Northern "Empire Builder."			
Ar. PORTLAND.....	7.35 AM S. P. & S....		Wednesday

Here we spend an eventful day, motoring in the morning over the spectacular Columbia River Highway, then by train to Tacoma.

After a restful night at the Winthrop Hotel, we motor Thursday morning to Rainier National Park for afternoon and overnight at Paradise Inn, in a flower-strewn valley at the base of snow-capped peaks. You'll enjoy roaming about this majestic playground, with glaciers close at hand.

Friday morning finds us on the way to Seattle for more interesting sightseeing by motor and an overnight stop at the Olympic Hotel.

Lv. SEATTLE.....	9.00 AM Alaska S. S....	Saturday
------------------	-------------------------	----------

Bound for Alaska, on a brave ship that will be our floating home for twelve magnificent days of adventuring in America's foreign land, cruising through placid waters of the famous Inside Passage.

Making our first stop at Ketchikan Monday, we go ashore to see the grotesque totem poles and the salmon canneries. Late the same day at Wrangell.

Tuesday in Juneau, the capital of Alaska and one of the most interesting cities of the far North. There is time enough to visit the museum or motor to Auk Lake and Mendenhall Glacier. Sailing once more, our only touch of open sea occurs when we steam away from the coast enroute to Cordova.

We pause Thursday morning for a close-up of tremendous Columbia Glacier, a live glacier 90 miles long, a mile wide and 300 feet high. We see icebergs in the making as vast fragments of ice break from the glacier's face and plunge into the sea. Today we also stop briefly at Valdez.

Seward is our turning point, and we reach there Friday. Before starting south there usually is time for the enthralling side trip on the Alaska Railroad via Kenai Lake and Placer River Canyon for a view of Spencer Glacier.

Southward we sail the same evening, over the same route and making the same shore excursions. Our ship is due to arrive in Seattle Thursday morning concluding a truly wonderful cruise.

### RETURN VIA THE AMERICAN ROCKIES

Lv. SEATTLE.....\*9.15 PM or †10.15 PM....Thursday  
Ar. ST. PAUL.....\*10.45 AM †10.30 PM.....Saturday  
Ar. CHICAGO.....\*8.45 AM †8.40 AM C.B.&Q.Sunday  
\*Tours 2-4-5-7 via Northern Pacific (North Coast Limited).  
†Tours 1-3-6-8 via Great Northern (Empire Builder).  
Ar. ST. LOUIS..... 5.55 PM *Your Choice*.....Sunday

### RETURN VIA THE CANADIAN ROCKIES

Returning this route, you stay in Seattle two days. Tour includes meals and room with bath at Olympic Hotel. Steamer to Victoria Saturday morning, motor sightseeing in afternoon, overnight at Empress Hotel. Sunday, over to Vancouver, motor tour of the city, leave 6.55 PM Monday via Canadian Pacific. Arriving at Field Tuesday afternoon, motor to Emerald Lake, then via Kicking Horse Canyon and Yoho Valley to Lake Louise. Overnight at Chateau Lake Louise and Wednesday on to Banff, for a night at Banff Springs Hotel, giving us two full days amid the glorious Canadian Rockies.

Lv. BANFF..... 6.50 PM Can. Pac.....Thursday  
Ar. ST. PAUL..... 7.15 AM Soo Line.....Saturday  
Ar. CHICAGO..... 3.00 PM Burlington.....Saturday  
Ar. ST. LOUIS..... 9.45 PM *Your Choice*.....Saturday

### COST OF COMPLETE TOUR

Tour includes all necessary expenses such as Pullman, Hotels (Two to a room, with bath), all Meals, and Auto Trips as shown in itinerary.

Costs "without rail ticket" are for the benefit of passengers coming from the East or South with through rail tickets.	From CHICAGO		*From ST. LOUIS	
	Without Railroad Ticket	With Railroad Ticket	Without Railroad Ticket	With Railroad Ticket
<b>"A" AMERICAN TOUR</b>				
Two in Lower Berth (each)	\$210.50	\$296.50	\$211.38	\$295.13
One in Lower Berth.....	226.25	312.25	226.75	310.50
One in Upper Berth.....	219.95	305.95	220.60	304.35
<b>"B" CANADIAN TOUR</b>				
Two in Lower Berth (each)	\$265.90	\$351.90	\$266.78	\$350.53
One in Lower Berth.....	281.65	367.65	282.15	365.90
One in Upper Berth.....	275.35	361.35	276.00	359.75

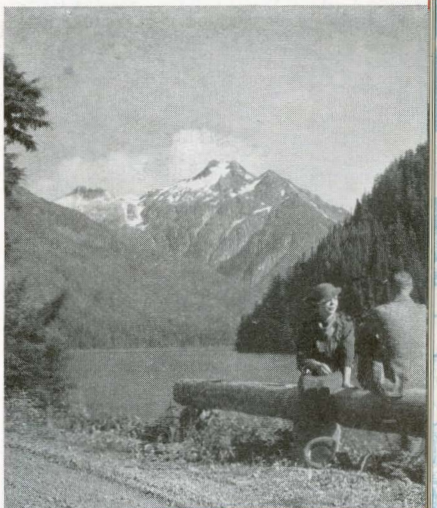
\*No Meals or Pullman included Chicago to St. Louis.

Additional for Single Rooms at Hotels. Canadian Tour \$11.00 American Tour \$3.00. Costs shown above are for berths in minimum rate staterooms on boat. Superior accommodations offered at slightly higher rates.



Congenial Companions . . . Sunny Decks . . . Sheltered Seas on the famous Inside Passage

"Shore Leave" in Alaska, a fresh new Travel World of Marvelous Scenery, Memorable Adventure



# Alaska

- Skagway
- West Taku Arm

## TOUR T—21 DAYS

**Air-Conditioned Equipment Throughout  
Rooms with Bath at All Hotels**

*(Burlington escort accompanies this tour to and from Vancouver)*

Lv. CHICAGO . . . . . \*11.00 PM or †11.15 PM (C.S.T.)  
(Union Station) Burlington . . . . . Sunday  
Lv. St. LOUIS . . . . . 2.00 PM Burlington . . . . . Sunday  
Lv. St. PAUL . . . . . \*8.30 AM or †8.50 AM . . . . . Monday  
Lv. MINNEAPOLIS . . . . . \*9.10 AM or †9.25 AM . . . . . Monday  
\*Tours T 1-3-5-7-9 via Northern Pacific "North Coast Limited."  
†Tours T 2-4-6-8 via Great Northern "Empire Builder."

Through Minnesota and North Dakota in the luxury of a splendid air-conditioned train. Mile after mile of mountain scenery by daylight Tuesday, in the midst of the Montana Rockies.

Ar. PORTLAND . . . . . 7.35 AM S.P. & S.Ry. . . . . Wednesday

Our arrival in the great Northwest starts eventfully with a motor sightseeing trip over the wonderful Columbia River Highway. Breakfast at the fine Multnomah Hotel.

Ar. TACOMA . . . . . 4.38 PM Gt. Nor. . . . . Wednesday

Overnight in this great lumber center at the Winthrop Hotel with a splendid treat in store for us on the morrow. Thursday morning early we motor off to Rainier National Park for an afternoon of riding, exploring the great Paradise Glacier, or hiking through the valley knee-deep in flowers, with snow-capped mountains towering overhead. Your hours in this most beautiful mountain park will be a lasting delight. Overnight at the inviting Paradise Inn.

Friday morning we motor down to Seattle, enjoy a sightseeing trip around the city before putting up overnight at the Olympic Hotel.

Lv. SEATTLE . . . . . 9.00 AM Can. Pac. S.S. . . . . Saturday

A trim steamer takes us across Puget Sound to Victoria, one of the most picturesque cities of the West. While our ship rides at anchor in the harbor we take shore leave for a sightseeing tour. Back in time for a pleasant cruise among the San Juan Islands before returning to the mainland at Vancouver. Transferring there to another and larger ship, we take our dinner aboard . . . while still at anchor. An interesting experience, this. Afterward there is time for a hurried shore leave before sailing time.

Lv. VANCOUVER . . . . . 9.00 PM Can. Pac. S.S. . . . . Saturday

There's something about sailing time that thrills us all. The "Blue Peter" flies at the masthead, up comes the gangway and off we go on a nine-day cruise . . . the most unique "ocean" voyage in the world.

Our course is through the calm waters of the Inside Passage to Alaska, in sight of shore all the time. An incomparable adventure in rest, relaxation, pleasant companionship and jolly shore excursions. We stop at Alert Bay, Prince Rupert, Ketchikan, Wrangell, mighty Taku Glacier (a veritable river of ice), Juneau and Skagway . . . all names to conjure with, where totem poles, mountains, fishing, mining and lumbering meet our fascinated gaze on every hand.

## LEAVING DATES

Tour T-1 . . . . . June 20  
Tour T-2 . . . . . June 27  
Tour T-3 . . . . . July 4  
Tour T-4 . . . . . July 11  
Tour T-5 . . . . . July 18  
Tour T-6 . . . . . July 25  
Tour T-7 . . . . . Aug. 1  
Tour T-8 . . . . . Aug. 8  
Tour T-9 . . . . . Aug. 15

Grotesque Totem Poles frown at  
Travelers in many Ports along  
the Alaskan Coast



On arrival at Skagway we take the train inland up over White Pass where thousands of gold-crazed miners formed a "human chain" in their mad rush for the fabulous Klondike. Now we are in Yukon country. At Carcross we board another boat and spend the next 24 hours cruising upon Tagish Lake to the wonderfully scenic West Taku Arm. All about the little lake rise mountains of staggering immensity. Back to Skagway with our vocabulary of exclamations totally exhausted. There our faithful steamer awaits us for our southbound voyage, again via the Inside Passage, and again stopping at numerous ports enroute.

Ar. VANCOUVER..... 9.00 AM Can.Pac.S.S.... Monday

Motor sightseeing this morning, catching up on the things we missed when here a while ago.

Lv. VANCOUVER..... 6.55 PM Can. Pac.Ry.... Monday

An open-top observation car proves ideal for viewing the rugged Canadian Rockies as we climb toward new scenic vistas.

Ar. FIELD..... 1.25 PM Can. Pac.Ry.... Tuesday

Motor cars meet us and take us to the mountain gem called Emerald Lake, then through Kicking Horse Canyon and Yoho Valley to the loveliness of Lake Louise. Here for a full day and overnight at the great Chateau Lake Louise, you will revel in the splendor of this mountain Paradise.

After lunch Wednesday we motor on again to Banff for an evening, spending the night and next day at the luxurious Banff Springs Hotel. Between hiking, riding, bathing in the mineral water pools, golfing and just relaxing we make the most of our final delightful hours in the Rockies. All too soon, we find ourselves on our train for home.

Ar. MINNEAPOLIS... 6.55 AM Soo Line..... Saturday

Ar. ST. PAUL..... 7.15 AM Soo Line..... Saturday

Ar. CHICAGO..... 3.00 PM Burlington.... Saturday

Ar. ST. LOUIS..... 9.45 PM *Your Choice*.... Saturday

## CONDENSED ITINERARY

Lv. Chicago.....Sun.

Lv. St. Louis.....Sun.

Ar. Portland.....Wed.

Ar. Tacoma.....Wed.

Ar. Rainier.....Thur.

Ar. Seattle.....Fri.

Lv. Seattle.....Sat.

Lv. Victoria.....Sat.

Lv. Vancouver.....Sat.  
Nine-day Sea Voyage.

Ar. Skagway.....Wed.  
West Taku Arm Side Trip.

Ar. Vancouver.....Mon.

Ar. Lake Louise.....Tue.

Lv. Banff.....Thur.

Ar. Chicago.....Sat.

Ar. St. Louis.....Sat.

Amazing Flowers and Foliage  
confound the Summer Tourist's  
conception of Alaska

## COST OF COMPLETE TOUR

Tour includes all necessary expenses such as Pullman, Hotels (Two to a room, with bath), all Meals, and Auto Trips as shown in Itinerary.

Costs "without rail ticket" are for the benefit of passengers coming from the East or South with through rail tickets.	From CHICAGO		*From ST. LOUIS	
	Without Railroad Ticket	With Railroad Ticket	Without Railroad Ticket	With Railroad Ticket
Two in Lower Berth (each)	\$233.80	\$319.80	\$234.68	\$318.43
One in Lower Berth.....	249.55	335.55	250.05	333.80
One in Upper Berth.....	243.25	329.25	243.90	327.65

\*No meals or Pullman included between Chicago and St. Louis.

Costs are quoted for berths in minimum rate stateroom on boat. Additional cost for superior accommodations varies according to staterooms selected.

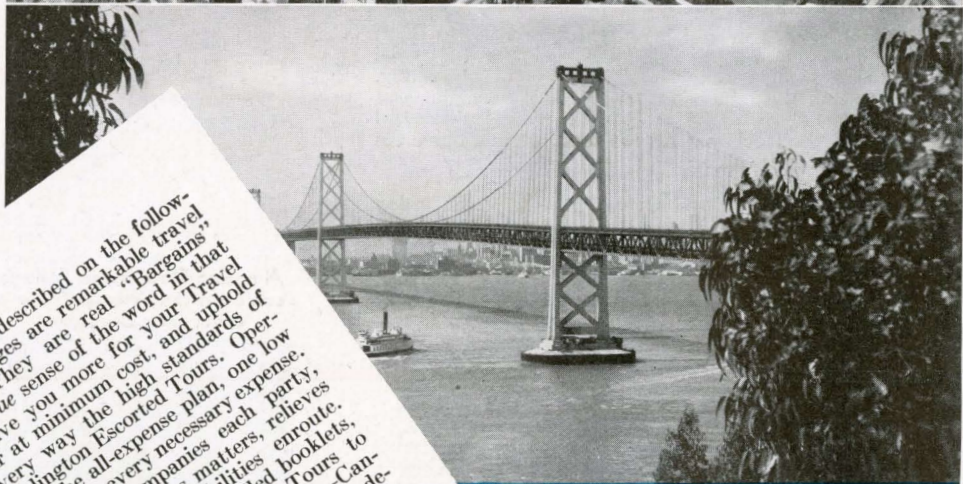
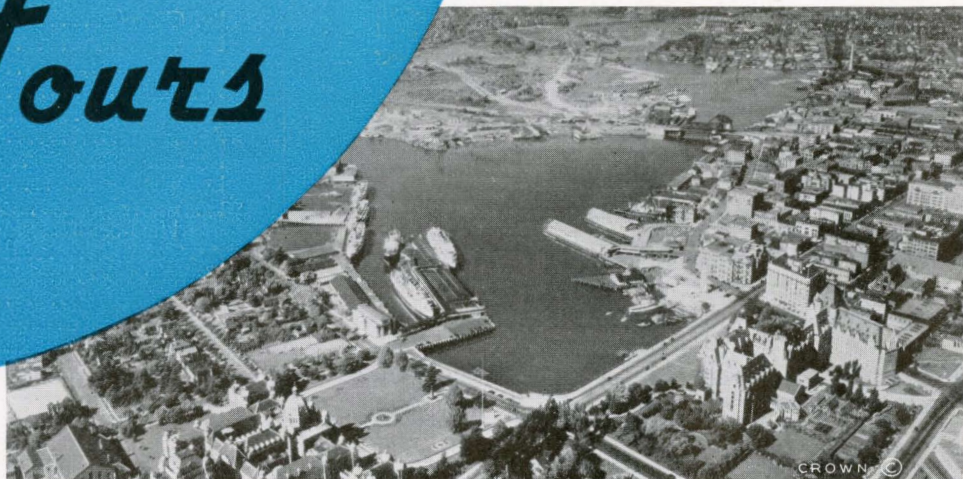
Additional for Single Rooms at Hotels \$6.50.



# Bargain Tours

*Top*—Air view of harbor at Vancouver, B. C., showing the Parliament Building at the lower left.

*Below*—A glimpse of San Francisco and the great new bridge stretching across the bay to Oakland.



The tours described on the following four pages are remarkable travel values. They are real "Bargains" in the true sense of the word in that they give you more for your Travel Dollar at minimum cost, and uphold in every way the high standards of all Burlington Escorted Tours. Operated on the all-expense plan, one low cost includes every necessary expense. An escort accompanies each party, handles all business matters, relieves you of all responsibilities enroute. Separate and more detailed booklets, one dealing with Bargain Tours to California—Pacific Northwest—Canadian Rockies—Alaska, another describing Colorado and Black Hills Bargain Tours, are available and will be sent on request.



## BARGAIN TOUR X GRAND CANYON, CALIFORNIA and COLORADO

**14 DAYS**

Leave Chicago 10:30 A.M. (C.S.T.) on "Aristocrat;" from St. Louis 2:00 P.M. on "Twin City Limited." From Burlington, Iowa, together.

**Colorado.** Arrive Denver Monday afternoon. A short motor tour, and then west on the new Moffat Tunnel route through the Colorado Rockies via Salt Lake City.

**California.** Arrive San Francisco Wednesday morning for two full days, headquarters Whitcomb Hotel. Motor tour of the city Wednesday afternoon. Thursday free. Leave San Francisco Thursday evening, arrive Los Angeles Friday morning for five days. Stopping at Clark Hotel. Motor trip Friday to Hollywood, Beverly Hills, Santa Monica, and again Monday through Long Beach, La Jolla for a day at San Diego. The rest of your time in Southern California is free.

**Grand Canyon.** Leave Los Angeles Tuesday evening, arrive Williams 10:00 A.M. Wednesday. Motor to gigantic Grand Canyon for an afternoon of peerless sightseeing.

Leave Williams (Grand Canyon) 8:00 P.M. via Santa Fe; arrive Kansas City 5:00 P.M. Friday, Santa Fe; arrive Chicago 7:40 A.M. Saturday, Santa Fe; arrive St. Louis Friday evening (via the route of your choice).

*Cost—including Transportation, Tourist Pullman, Lodging (2 in a room, with Bath), Motor Trips as indicated, and all Meals (except in Los Angeles)—as low as:*

Two Persons in a lower, each, from Chicago \$129.93; from St. Louis \$124.33.

## GRAND CANYON - CALIFORNIA and PACIFIC NORTHWEST

**13 DAYS — Tour W**

Leaving Chicago 10:20 A.M. (C.S.T.) via Santa Fe; from St. Louis as you prefer; together from Kansas City.

**Grand Canyon.** By motor from Williams on arrival Tuesday morning. All day at Grand Canyon, the world's greatest chasm. Train back to Williams in evening.

**California.** Arrive Los Angeles Wednesday noon for four days, headquarters at Hotel Clark. Motor trip to Hollywood and Beverly Hills, Santa Monica and Pacific beaches. No further program provided. Plenty of time for sightseeing and side trips. Leave Saturday, arrive San Francisco Sunday for full day here. Sightseeing trip to interesting places. Meals and overnight at the Hotel Whitcomb.

**Pacific Northwest.** Motor trip in Portland, then to Seattle Tuesday morning for two days, with headquarters at the New Washington Hotel. Motor trip morning of arrival. Time for Rainier or Victoria side trips.

Return via Great Northern or Northern Pacific, arriving Chicago Saturday morning, St. Louis 5:55 P.M. on the same day, via either of these routes.

*Cost—including Transportation, Tourist Pullman, Lodging (two in a room, with Bath), Motor Trips as indicated, and Meals (except in Los Angeles and Seattle)—as low as:*

Two Persons in a Lower, each, from Chicago \$129.75, from St. Louis \$126.45.

*Bargain  
Tours*

### DEPARTURE DATES

from Chicago and  
St. Louis Sundays

June 13

June 20

June 27

July 4

July 11

July 18

July 25

August 1

August 8

August 15

August 22

September 5

### DEPARTURE DATES

from Chicago and  
St. Louis Sundays

June 13

June 27

July 4

July 11

July 18

August 1

August 8

August 15

## CANADIAN ROCKIES and the PACIFIC NORTHWEST

13 DAYS — Tour CR

Entire party leaves Chicago 10:10 A.M. (C.S.T.) on the Water Level Route, along the Mississippi for 300 miles of charming scenery, to the Twin Cities.

### DEPARTURE DATES

from Chicago and  
St. Louis Sundays

June 27

July 4

July 11

July 18

August 1

August 8

August 15

August 22

**Canadian Rockies.** Three days of splendid mountain vacationing. Arrive Banff Tuesday morning, making our headquarters at charming Banff Springs Hotel. Then to lovely Lake Louise for two days, stopping at the picturesque Deer Lodge.

**Pacific Northwest.** Arrive Vancouver Friday evening. Motor trip about the city. Meals and lodging, Hotel Georgia. Night trip to Victoria for a day, headquarters Empress Hotel. Across Puget Sound, to Seattle, remaining until Tuesday afternoon. Headquarters at the new Benjamin Franklin Hotel with motor sightseeing trips to lakes, parks and other nearby places. Tuesday afternoon to Portland, overnight at the Multnomah Hotel. Motor sightseeing trip about the "Rose City" is included in cost of our tour.

Returning via Great Northern or Northern Pacific, as you prefer, to arrive in Chicago Saturday morning 8:45 or 8:50 A.M. (C.S.T.)

*Cost—including Transportation, Tourist Pullman, Lodging (2 in a Room, with Bath—except at Deer Lodge), Meals (except in Seattle), and Motor Trips as indicated—as low as:*

Two Persons in a Lower, each, from Chicago or St. Louis \$134.58.

Lofty mountains and wooded shores reflected in Lake Atlin, Alaska, near Skagway.



Vista house and the Columbia River Gorge, only a short distance from Portland.



## ALASKA TOUR Canadian Rockies—Pacific Northwest—Sitka 20 DAYS — Tour U

Leave Chicago 10:10 A.M. (C.S.T.) via Mississippi River route to Twin Cities.

**Canadian Rockies.** Arrive Banff Tuesday morning, a day at Banff Springs Hotel; then to Lake Louise for two days, stopping at Deer Lodge.

**Pacific Northwest.** Vancouver all day Saturday, with motor tour of city. Overnight by steamer to Victoria for a day of sightseeing, then across Puget Sound to Seattle. Headquarters at Benjamin Franklin Hotel, two nights. Motor tour Monday.

**Alaska Cruise—10 days.** Leave Seattle Tuesday morning, sailing via sheltered waters of the Inside Passage. Shore excursions at Ketchikan, Wrangell, Petersburg, Juneau the capital of Alaska; also a view of Taku Glacier. Friday at Skagway, gateway to the Yukon. Thrilling side trip can be included over the "Trail of '98" to Lake Bennett for \$7.50 additional. Return via same route, also stopping at Sitka. Arrive Seattle Thursday morning.

Return route via either Northern Pacific or Great Northern, arriving in Chicago Sunday morning at 8:40 or 8:45 (C.S.T.).

*Cost—including Transportation, Tourist Pullman, Lodging (2 in a Room, with Bath—except at Deer Lodge), minimum-rate Berths on Ship, all Meals, and Motor Trips as indicated —as low as:*

Two Persons in a Lower, each \$223.53 from Chicago or St. Louis.

### DEPARTURE DATES

from Chicago and  
St. Louis Sundays  
July 4  
July 11  
August 1  
August 15  
August 22

## ALASKA TOUR Canadian Rockies—Pacific Northwest 20 DAYS — Tour V

Leave Chicago Union Station 10:10 A.M. (C.S.T.), to St. Paul via Water Level Route along Mississippi.

**Canadian Rockies.** Through Canada Monday, arriving Banff Tuesday 9:50 A.M., headquarters at luxurious Banff Springs Hotel. Next morning at Lake Louise for two days of roaming the mountains, stopping at unique Deer Lodge.

**Pacific Northwest.** Arriving on the Pacific Coast Friday, spending one day at Vancouver before sailing.

**Alaska Cruise—9 days.** We sail from Vancouver Saturday evening, via Alert Bay, Prince Rupert and the famous Inside Passage. Fascinating shore leaves at Ketchikan, Petersburg and Juneau. Near Juneau we steam close to Taku Glacier. Skagway landing on Wednesday with two days open for side trips. The thrilling Lake Bennett trip costs \$6.50 extra; to West Taku Arm \$21.50 extra. Return voyage over practically same route.

**Pacific Northwest.** Arrive Vancouver Monday morning, then across Puget Sound to Seattle for a day. Headquarters at the Benjamin Franklin Hotel. Motor tour of the city. A day and night in Portland. Auto trip included.

Return routing via either Great Northern or Northern Pacific, arriving in Chicago at 8:45 A.M. or 8:40 A.M. (C.S.T.), on Saturday via either route.

*Cost—including Transportation, Tourist Pullman, Lodging (2 in a Room, with Bath—except at Deer Lodge), minimum-rate Berths on Ship, all Meals, and Motor Trips as indicated —as low as:*

Two Persons in a Lower, each, \$228.03 from Chicago or St. Louis.

### DEPARTURE DATES

from Chicago and  
St. Louis Sundays  
June 27  
July 4  
July 11  
July 18  
August 1  
August 8  
August 15  
August 22

# Bargain Tours

DENVER  
COLORADO SPRINGS  
GARDEN OF GODS  
PIKES PEAK  
ROCKY MOUNTAIN  
NATIONAL (ESTES) PARK

DENVER  
COLORADO SPRINGS  
PIKES PEAK  
ROYAL GORGE  
TENNESSEE PASS  
GLENWOOD SPRINGS  
DOTSERO CUT-OFF  
GRAND LAKE  
TRAIL RIDGE ROAD  
ROCKY MOUNTAIN  
NATIONAL (ESTES) PARK

## COLORADO TOURS

7 DAYS—Tour No. 1

10 DAYS—Tour No. 3

Leaving Chicago and St. Louis Sundays June 20-Sept. 5, inclusive.

From Chicago 10:30 AM (CST) on the "Aristocrat," from St. Louis 2:00 PM on "Colorado Limited." Sightseeing in Denver on arrival Monday afternoon. Overnight in Colorado Springs at Broadmoor Hotel; a full day of motoring through Garden of Gods to summit of Pikes Peak. Overnight in Denver at Shirley-Savoy Hotel, motoring Wednesday to Estes Park Chalets for over two days (5 days on No. 3 Tour). Back same route. The return via Trail Ridge Road, Fall River Pass and Grand Lake can be included in tour for \$8.00 additional.

Tour No. 1 leaves Denver Friday 8:00 PM, arriving St. Louis 9:15 PM, Chicago 7:50 PM, Saturday. Tour No. 3 leaves Denver Monday, arrives St. Louis and Chicago Tuesday, same hours.

	From CHICAGO		From ST. LOUIS	
	7-Day	10-Day	7-Day	10-Day
In Sleeper (2 in a lower Each) .....	\$82.58	\$97.58	\$77.17	\$92.17
In Chair Car (Lv. July 11, 18, 25, Aug. 1, 8)	69.35	84.35	66.00	81.00

## COLORADO TOURS

7 DAYS—Tour No. 2

10 DAYS—Tour No. 4

Leaving Chicago and St. Louis Sundays June 20-Sept. 5, inclusive.

Leave Chicago 10:30 AM (CST) via the "Aristocrat," St. Louis 2:00 PM on "Colorado Limited." Motoring about Denver on arrival Monday afternoon, overnight at Shirley-Savoy Hotel. Tuesday at Colorado Springs, motoring to Pikes Peak via Garden of the Gods, overnight at Broadmoor Hotel. By train Wednesday through Royal Gorge to Glenwood Springs, overnight at Colorado Hotel, back via Dotsero Cut-Off to Granby. Motor to Grand Lake, over Trail Ridge Road to Estes Park Chalets for a day (4 days on No. 4 Tour), then to Denver.

Tour No. 2 leaves Denver Friday 8:00 PM, arrives St. Louis 9:15 PM, Chicago 7:50 PM, Saturday. Tour No. 4 leaves Denver on Monday, arrives St. Louis and Chicago Tuesday, same hours.

	From CHICAGO		From ST. LOUIS	
	7-Day	10-Day	7-Day	10-Day
In Sleeper (2 in a lower Each) .....	\$94.68	\$109.68	\$89.27	\$104.27
In Chair Car (Lv. July 11, 18, 25, Aug. 1, 8)	81.45	96.45	78.10	93.10

## BLACK HILLS TOURS

7 DAYS—Tour No. 6

Leaving Chicago and St. Louis Sundays June 20-Sept. 5, inclusive.

From Chicago 10:30 AM (CST) on "Aristocrat," from St. Louis 2:00 PM. On arrival at Newcastle Monday 2:45 PM, motoring via historic Custer and Mt. Coolidge to State Game Lodge, remaining until Wednesday morning. Wednesday through Aisle of Pines and over the weird Needles Highway to Sylvan Lake, then via Mt. Rushmore and the world's most colossal statues, to glamorous Deadwood, Lead of gold-mining fame, and Mt. Roosevelt. Two nights at Franklin Hotel in Deadwood. Through Spearfish Canyon Friday down to the train at Newcastle.

Leaving Newcastle 3:00 PM Friday, arriving St. Louis 5:40 PM and Chicago 7:50 PM Saturday.

	From CHICAGO		From ST. LOUIS	
In Sleeper (2 in a Lower, each) .....	\$81.45		\$80.98	
In Chair Car (Lv. July 11, 18, 25, Aug. 1, 8)	69.35		69.10	

NOTE: Special folder, giving full details about these tours as well as other Bargain Tours to Colorado and the Black Hills of South Dakota, is available on request.



Sunset on the Pacific Coast

*Left—Avalon Bay of Catalina Island, famed Pleasure Spot off the California Coast.*

*Below—Hikers pause beside a Mountain Brook in the shadow of Lindbergh Peak, Colorado.*



# COMBINATION TOURS

**T**O OUR tour patrons who have more time at their disposal we suggest combinations of two or more of the tours described on preceding pages of this book. By going part way with one tour and part way with another, you can visit as many of the great Western playgrounds as your vacation time permits, on one railroad ticket. The flexibility which makes possible this service convenience is one of the important advantages of Burlington Escorted Tours.

## GLACIER PARK PACIFIC NORTHWEST CANADIAN ROCKIES

20 DAYS

*Lvg. Chicago and St. Louis Sundays, June 20, July 4, 18, Aug. 1, 15*

**Glacier National Park**—One week. Including Two Medicine Lake, over the border to Canada's Waterton Lakes National Park, Prince of Wales Hotel, returning to Many Glacier Hotel, then over breath-taking Logan Pass to Lake McDonald.

**Pacific Northwest.** Taking in all of the most fascinating high spots of the great North Coast Empire, including Portland the "Rose City," Multnomah Falls, Tacoma, glorious Rainier National Park, Seattle, Victoria the capital of British Columbia, and Vancouver.

**Canadian Rockies.** A memorable trip by motor to gem-like Emerald Lake, Kicking Horse Canyon, Yoho Valley and Yoho Glacier, then to the mountain magnificence of lovely Lake Louise, and a final stop at the great Banff Springs Hotel.

For detailed itinerary, see Tour A, page 4 (additional time spent at Many Glacier Hotel), and Tour F, page 24.

Cost as low as \$273.90 from Chicago, \$272.53 from St. Louis.

## YELLOWSTONE PARK PACIFIC NORTHWEST CANADIAN ROCKIES

18 DAYS

*Lvg. Chicago and St. Louis Tuesdays, June 29, July 13, 27, Aug. 10.*

**Yellowstone Park**—Five days. Entering the "Land of White Magic" we visit Mammoth Hot Springs, Old Faithful the world's most famous geyser, Yellowstone Lake, the incredibly beautiful Grand Canyon and Great Fall, over the Cody Road of thrills.

**Pacific Northwest.** Highlights of this phase: Portland in the Evergreen Empire, the great Columbia River Highway drive, Tacoma the lumber capital, motor to Rainier National Park and return to Seattle, Victoria the island metropolis, and Vancouver.

**Canadian Rockies.** Motoring in the heart of glorious peaks and valleys, to Emerald Lake Chalets, Yoho Valley, Lake Louise in a snow-capped setting, and Banff on the Bow River.

For detailed schedule of this tour, see Tour C (page 12) and Tour F (page 24). An additional day is spent at Grand Canyon, and a night in Billings, Mont., before joining the F Tour.

Cost as low as \$264.85 from Chicago or St. Louis.

## BLACK HILLS YELLOWSTONE PARK GLACIER PARK

14 DAYS

*Lvg. Chicago and St. Louis Sundays, July 4-Aug. 15, incl.*

**Black Hills** of South Dakota. Motoring to historic Custer, the State Game Lodge where President Coolidge established his Summer White House in 1927, Sylvan Lake, weird Needles Highway, Mt. Rushmore and the world's most colossal sculptures, glamorous Deadwood, Lead of gold mining fame, and Spearfish Canyon.

**Yellowstone National Park**—Four days. A complete tour of the geyser wonderland, including Norris Geyser Basin, Old Faithful, Grand Canyon and Great Falls (a sublime colorful spectacle), and choice of the 80-mile Cody Road or the new Red Lodge Highway.

**Glacier National Park.** Visiting Two Medicine Lake, the Prince of Wales Hotel in Waterton Lakes National Park, Many Glacier region, Going-to-the-Sun Highway over Logan Pass, and Lake McDonald.

For detailed itinerary see Tour L (p. 36) and Tour C (p. 12).

Cost as low as \$208.75 from Chicago, \$210.00 from St. Louis.

*Leaving Chicago and St. Louis, Sundays, June 27-Aug. 22, incl.*

**Glacier Park.** Five days, including Two Medicine, Waterton Lakes and Prince of Wales, Many Glacier Region, Going-to-the-Sun, Logan Pass and Lake McDonald.

**Yellowstone Park.** Five days, entering and leaving via the famed Cody Road; Grand Canyon, Old Faithful, Yellowstone Lake and many other natural wonders.

**Colorado.** Several hours in Denver, and a day in the Colorado Springs-Pikes Peak region.

For detailed schedules, see Tour A (page 4) and Tour D (page 16).

**Costs as low as \$195.15 from Chicago, \$198.65 from St. Louis.**

*Leaving Chicago and St. Louis Sundays, June 27, July 4, 11, 25, Aug. 1, 8.*

**Yellowstone National Park.** The most fascinating phenomena of this famous vacationland, including Mammoth Hot Springs' boiling pools, smoking acres of Norris Geyser Basin, world-renowned Old Faithful, Yellowstone Lake, the glorious Grand Canyon, and Cody Road through the Buffalo Bill country.

**Colorado.** Motoring via the Big Thompson Canyon, spending one day at Estes Park, then over the new Trail Ridge Road to Grand Lake, thence to Granby.

**California.** To San Francisco and the great bridges across the bay, beautiful Yosemite National Park, Los Angeles the capital of Movieland, San Diego, returning via Grand Canyon, the world's most colossal abyss.

For detailed schedules, see Tour B (page 8) and Tour O (page 44).

**Cost as low as \$283.11 from Chicago, \$279.23 from St. Louis.**

*Lvg. Chicago and St. Louis Sundays, June 27, July 4, 11, 25, Aug. 1, 8.*

**Yellowstone National Park.** Plenty of time to see all the weird fantastic phenomena of this famous park, including the rainbow terraces of Mammoth Hot Springs, Upper Geyser Basin, the largest area of its kind in the world, Old Faithful, Yellowstone Lake, great Grand Canyon, out by the spectacular Cody Road.

**Colorado.** From Loveland the gateway to Colorado's vacationlands via Big Thompson Canyon, stopping at Estes Park for a day, then over Fall River Pass to Grand Lake, joining the California Party at Granby.

**California.** Over the newest transcontinental route to the Pacific Coast, visiting colorful San Francisco, famed Yosemite National Park, motor to Del Monte, Santa Barbara, Los Angeles, Catalina the far-famed island of joy, San Diego, and the colossal Grand Canyon of Arizona.

For detailed itinerary see Tour B (page 8) and Tour P (page 46).

**Cost as low as \$353.76 from Chicago, \$349.88 from St. Louis.**

*Lvg. Chicago and St. Louis Sundays, June 27, July 4, 11, 25, Aug. 1, 8.*

**Yellowstone National Park.** The main highlights of Geyserdom, such as Mammoth Hot Springs' terraces and pools, Old Faithful, Upper Geyser Basin, unparalleled Grand Canyon, and the thrilling Cody Road.

**Colorado.** Via Big Thompson Canyon, Estes Park for one day, Trail Ridge Road, Milner Pass and Grand Lake.

**California.** Los Angeles the center of Southern California, incomparable Yosemite National Park, San Francisco and the two thrilling bridges that span the beautiful harbor, and famed Crater Lake National Park in Oregon.

**Pacific Northwest.** Visiting Portland, the great Columbia River Highway, Mt. Rainier, Seattle, Victoria, Vancouver.

**Canadian Rockies.** Motoring by way of Emerald Lake, Yoho Valley, exquisite Lake Louise, and Banff.

For detailed schedules see Tour B (page 8) and Tour NF (page 42).

**Cost as low as \$363.91 from Chicago, \$362.66 from St. Louis.**

**GLACIER PARK  
YELLOWSTONE PARK  
COLORADO  
14 DAYS**

**YELLOWSTONE PARK  
COLORADO  
CALIFORNIA  
21 DAYS**

**YELLOWSTONE PARK  
CALIFORNIA  
WONDER TOUR  
26 DAYS**

**YELLOWSTONE PARK  
CALIFORNIA  
PACIFIC NORTHWEST  
CANADIAN ROCKIES  
26 DAYS**

# INFORMATION



## COST OF TOURS

The cost of each "Burlington Escorted Tour" covers all of your necessary expenses en route—Pullman accommodations, motor trips, hotel accommodations as shown under each tour, meals and the tours of the national parks (but does not include tips, which are considered purely personal).

## AIR-CONDITIONED EQUIPMENT

Air-conditioning has brought forth a new era of comfort and convenience in vacation travel. Today when you travel in air-conditioned railroad cars your vacation begins the moment you step aboard the train. Every minute of your journey out and back is restful, comfortable and clean, regardless of weather conditions. You eat, sleep and relax in the luxury of pure fresh air at just the right temperature and humidity. Air conditioning means more happy vacation hours at no extra cost.

The phrase "Air-Conditioned Equipment Throughout" as used under each tour A-T, inclusive, means just that . . . air-conditioned sleepers, dining cars and observation lounge cars for the entire trip, both in the United States and Canada.

All of our regular tours (A to T, inclusive) will be accommodated in modern air-conditioned Standard Sleepers, and will be handled on trains carrying air-conditioned Dining and Observation Cars. California-Pacific Coast bargain tours (U, V, W, X and CR) will be handled in non-air-conditioned Tourist Sleepers. Colorado and Black Hills Bargain Tours will be handled in Standard air-conditioned Sleeping Cars, Chair Cars or Coaches.

## PURCHASE THROUGH RAIL TICKET

Passengers coming from points east or south of Chicago or St. Louis should purchase through round-trip summer excursion ticket from their home station and in this way obtain the full benefit of the low round-trip railroad fare. Your home agent will be glad to arrange your reservation and issue tickets.

## COST DEPENDS UPON PULLMAN SPACE

The cost of a tour varies according to Pullman accommodations used. The individual cost is

less if two persons occupy one berth; or if two or more persons occupy one compartment or drawing-room. Specific rates are quoted for berths (upper and lower). Quotations involving compartments or drawing-rooms or single occupancy of sections will be given upon request.

## COST FROM EASTERN POINTS

Rates from Eastern points will be quoted gladly by any of the representatives listed on inside back cover of this booklet.

## RATES FOR CHILDREN

Rates for children will be based on their age and accommodations desired.

## HOW TO JOIN TOURS

Bookings for tours should be arranged through R. S. Caird, Manager of Burlington Escorted Tours, 547 West Jackson Blvd., Chicago, or through any Burlington Route, Great Northern or Northern Pacific representative, all of whom are authorized agents for these tours and are prepared to render every assistance in the way of supplying detailed information, making reservations and definitely booking passengers. We reserve the right to decline any application.

Final payment must be made at least seven days before tour leaves. Bookings are not made for holders of free railroad transportation except by special arrangement—and then only when accompanying paying passengers.

## LIABILITY

In selling these tours, the Burlington Escorted Tours act only in the capacity of agent for the various railroads, transportation companies, hotels, etc., and assume no responsibility for injury to persons or loss or damage to baggage.

## YOUR APPAREL AND BAGGAGE

On Mountain Park tours, while these are summer journeys the nights in the mountains and the cool invigorating auto rides make desirable medium-weight wraps, sweater coats or a wind and weatherproof outer coat. Knickers and outing suits are worn throughout the mountain territory. Stout sports shoes or boots should be part of your outfit. On Pacific Coast tours, with the weather almost universally warm, light-

weight sports outfits are most appropriate for day wear, plus comfortable walking shoes.

After the day's activities, the dinner hour and evening lounge or dance naturally suggest a change from the habiliments of travel and out-of-door life, but formal evening attire is entirely unnecessary.

Because of the change of climate and mountain altitudes it is advisable to include cold cream and the usual lotions for sunburn and chapped lips. The bright sunlight also suggests that you bring colored glasses.

One medium-sized suitcase or traveling bag should hold sufficient clothing for the tours of two weeks or less. The free allowance of baggage which may be carried in automobiles in the National Parks, is one piece weighing twenty-five pounds—this aside from a small overnight bag which passengers may easily carry with them.

In any case trunks are unnecessary. Due to frequent handling, durable baggage with strong handles is essential. As Burlington Escorted Tours are not responsible for damage to baggage or loss of personal effects we would suggest you secure from our representative an insurance policy which covers loss or damage to personal effects or baggage. The rates are very reasonable. \$100.00 protection for 8 days costs 40c, for 13 days, 65c.

### MEALS

Tour costs shown herein provide all meals (except while in Los Angeles on Tours N, NF, O, P, X and W, and in Seattle on Tours CR, W, U, V). In dining cars and at hotels passengers are free to select the meal they desire, from the service offered.

### HORSEBACK TRIPS

Saddle horses may be hired at most stopping places in the National Parks.

### EXTEND YOUR TOUR

It is a very simple matter to prolong your visit on the Pacific Coast. You merely leave one tour at Portland, Seattle, Vancouver, San Francisco or Los Angeles, and join a subsequent tour. Or you may use any of the tours for your going

trip and return independently or vice versa. In such cases arrangement must be made at time of booking. Allowance will be made for unused portion of complete tours under these circumstances.

### TRAIN TIME AT CHICAGO

The time of arrival and departure at Chicago is shown in Central Standard Time (not "Daylight Saving" Time).

### MAIL AND TELEGRAMS

Mail and telegrams for members of these parties should be addressed c/o Burlington Escorted Tour (A-5, B-6, P-4, or any other as the case may be), at hotels or lodges as shown in itinerary.

### CHANGE IN RATES OR SCHEDULES

We reserve the right to make such alterations in the tours as may be deemed necessary due to changes in train and auto schedules or for other causes. Rates quoted herein are subject to change without notice.

### DESCRIPTIVE BOOKLETS

This booklet of "Burlington Escorted Tours" manifestly can be but a practical description of the tours, and information as to joining them. You are invited to ask for such of these additional descriptive publications as appeal to you in the consideration of any tour. We shall be pleased to mail them free of charge.

Yellowstone Park  
Glacier Park  
Rainier National Park  
Pacific Northwest  
California  
Canadian Rockies

Colorful Colorado  
The Cody Road  
The Mississippi River  
Scenic Line  
Alaska  
Black Hills

### OUR TOUR ESCORTS

The Escorts who accompany all Burlington Tours are courteous and competent men, travel experts whose duty it is to see that you are relieved of all cares and responsibilities wherever your itinerary takes you. Necessarily, they are business men, since they take care of all business arrangements. More than that, we believe you will find them congenial travel companions, always willing (even anxious) to see that you enjoy every minute of your vacation.

PLEASE DON'T BRING  
EVERYTHING!



TRAVEL LIGHT BUT  
COMFORTABLY!

# REQUEST for RESERVATIONS

CITY

DATE

Dear Sir:

Parties listed below wish to join Tour \_\_\_\_\_ at \_\_\_\_\_

Date \_\_\_\_\_ Remain with tour to \_\_\_\_\_

Name

Address

City and State

(If more than one passenger in party, indicate how to be berthed on train and at hotels, stating relationship, and give ages of children, if any.)

Reserve Pullman space checked ☒ below:

☐ Lower

☐ Upper

☐ Compartment

☐ Two in lower

☐ Section

☐ Drawing-Room

Specify choice in Yellowstone Park ☐ Hotels or ☐ Lodges

Alaska Tour accommodations desired \_\_\_\_\_

REMARKS: \_\_\_\_\_

(Sign here) \_\_\_\_\_

Address \_\_\_\_\_

Mail to R. S. Caird, Mgr., Burlington Escorted Tours, 547 W. Jackson Blvd., Chicago,  
or to your nearest Representative shown on opposite page

# "BURLINGTON ESCORTED TOURS" REPRESENTATIVES

City	Address	Representative and Title	Railroad
ATLANTA, GA.	516 Healey Bldg.	W. T. Vardaman, General Agent.	Burlington
BOSTON	80 Boylston St.	F. F. Johnson, General Agent.	Burlington
	120 Boylston St.	J. H. Kenney, New Eng. Pass. Agt.	Great Northern
	236 Old South Bldg.	Jared Jernegan, Dist. Pass. Agent	Northern Pacific
BUFFALO, N. Y.	716 Ellicott Sq.	C. W. Beardsell, Dist. Pass. Agent.	Northern Pacific
BURLINGTON, IOWA	Burlington Bldg.	J. J. Teeter, Div. Pass. Agent.	Burlington
CHICAGO, ILL.	179 W. Jackson St.	S. J. Owens, Gen. Agt. Pass. Dept.	Burlington
	73 E. Jackson Blvd.	Emma W. Bock, Tour Rep.	Burlington Tours
	212 South Clark St.	G. W. Rodine, Gen. Agent Pass. Dept.	Northern Pacific
		E. H. Moot, Gen. Agent Pass. Dept.	Great Northern
CINCINNATI	505 Dixie Terminal Bldg.	J. C. Boyer, General Agent.	Burlington
	608 Traction Bldg.	J. H. Brinkman, General Agent.	Great Northern
	615 Gwynne Bldg.	R. H. McCurdy, Gen. Agt. Pass. Dept.	Northern Pacific
CLEVELAND	1033 Terminal Tower	S. S. Hankis, General Agent.	Burlington
	1334 Terminal Tower	Willard Adamson, General Agent.	Northern Pacific
	508 Hippodrome Bldg.	F. L. Cobb, Dist. Pass. Agent.	Great Northern
DES MOINES, IOWA	6th and Mulberry	D. A. Coffeen, City Pass. Agent.	Burlington
	328 Des Moines Bldg.	Frank Harlan, Dist. Pass. Agent.	Northern Pacific
	305 Equitable Bldg.	O. W. Pierce, Dist. Pass. Agent.	Great Northern
DETROIT	704 Transportation Bldg.	F. L. Gannaway, General Agent.	Burlington
	Lobby, Transportation Bldg.	H. G. Schuette, General Agent.	Great Northern
	1006 Transportation Bldg.	Geo. Barnes, General Agent.	Northern Pacific
GALESBURG, ILL.	Burlington Station.	C. I. Twyman, Div. Pass. Agent.	Burlington
HANNIBAL, MO.	3rd and Lyon Sts.	Paul Anderson, Div. Pass. Agent.	Burlington
INDIANAPOLIS	910 Merchants Bank Bldg.	W. P. O'Rourke, General Agent.	Burlington
KANSAS CITY, MO.	701 Walnut St.	B. L. Gartside, Gen. Agent Pass. Dept.	Burlington
	116 Ry. Exchange Bldg.	Neil Baird, General Agent.	Northern Pacific
	544 Ry. Exchange Bldg.	C. A. Rand, Gen. Agent Pass. Dept.	Great Northern
LINCOLN, NEB.	142 S. Thirteenth St.	H. P. Kauffman, Gen. Agt. Pass. Dept.	Burlington
MILWAUKEE	221 Wisconsin Ave.	C. J. Leydon, General Agent.	Burlington
	1418 Majestic Bldg.	R. L. Kelly, General Agent.	Northern Pacific
	502 Majestic Bldg.	B. C. Culbertson, General Agent.	Great Northern
MINNEAPOLIS	90 S. Seventh St.	J. E. Lynn, Gen. Agt. Pass. Dept.	Burlington
	701 Marquette Ave.	C. S. Kirkland, Gen. Agt. Pass. Dept.	Northern Pacific
	640 Marquette Ave.	C. M. Cornelius, Gen. Agt. Pass. Dept.	Great Northern
NEW ORLEANS	228 Baronne St.	A. R. Brown, General Agent.	Burlington
NEW YORK CITY	500 Fifth Ave. (cor. 42nd St.)	M. J. Fox, Dist. Pass. Agent.	Burlington
	560 Fifth Ave.	H. M. Fletcher, Asst. Gen. Pass. Agt.	Northern Pacific
	595 Fifth Ave.	M. M. Hubbert, Gen. East. Pass. Agt.	Great Northern
OMAHA, NEB.	1004 Farnam St.	J. W. Sharpe, Gen. Agt. Pass. Dept.	Burlington
PEORIA, ILL.	301 S. Jefferson Ave.	W. A. Stingley, General Agent.	Burlington
PHILADELPHIA	215 No. Amer. Bldg.	E. H. Smith, General Agent.	Burlington
	504 Finance Bldg.	A. E. Rohmer, Dist. Pass. Agent.	Great Northern
	926 Fid.-Phila. Trust Bldg.	B. M. Decker, General Agent.	Northern Pacific
PITTSBURGH	1728 Koppers Bldg.	A. G. Mathews, General Agent.	Burlington
	608 Park Bldg.	C. T. Penn. Gen. Agt. Pass. Dept.	Northern Pacific
	602 Oliver Bldg.	P. H. Yorke, General Agent.	Great Northern
QUINCY, ILL.	400 Maine St.	B. R. Newlon, Div. Pass. Agent.	Burlington
ST. JOSEPH, MO.	110 S. Fifth St.	S. T. Abbott, Div. Pass. Agent.	Burlington
ST. LOUIS, MO.	322 N. Broadway	C. B. Ogle, Gen. Agt. Pass. Dept.	Burlington
		L. W. Smith, Tour Rep.	Burlington Tours
	520 Boatmen's Bank Bldg.	J. M. Sanford, General Agent.	Great Northern
	440 Boatmen's Bank Bldg.	R. K. Cross, General Agent.	Northern Pacific
ST. PAUL	6th and Roberts Sts.	S. L. Mentzer, Gen. Agt. Pass. Dept.	Burlington
	4th and Roberts Sts.	M. R. Johnson, Gen. Agt. Pass. Dept.	Northern Pacific
	4th and Minnesota Sts.	W. G. Mitsch, City Ticket Agent.	Great Northern
WASHINGTON, D. C.	309 Woodward Bldg.	F. F. Crabbe, General Agent.	Burlington
	303 Nat'l Press Bldg.	E. H. Whitlock, General Agent.	Great Northern

**R. S. CAIRD, Manager, Burlington Escorted Tours**  
**547 West Jackson Blvd., Chicago, Ill.**



You will treasure your memories  
of a Burlington Escorted Tour  
long after your vacation is ended