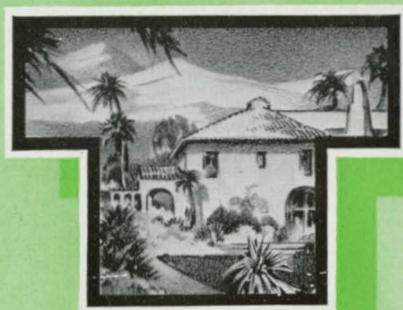
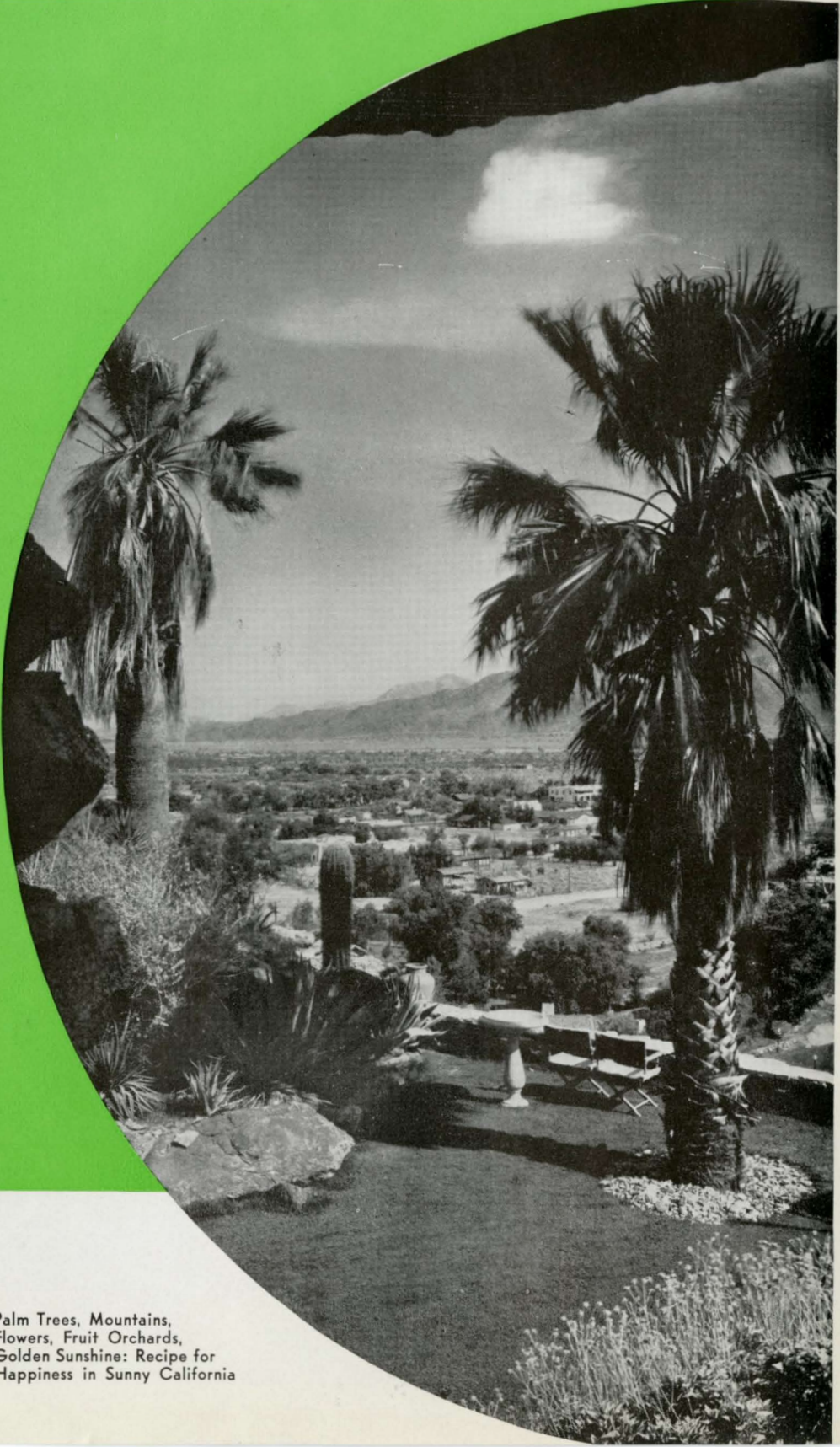


CALIFORNIA and PACIFIC NORTHWEST

Bargain

DENVER
SALT LAKE CITY
GRAND CANYON
LOS ANGELES
SAN DIEGO
SAN FRANCISCO
PORTLAND
SEATTLE
VICTORIA
VANCOUVER
LAKE LOUISE
BANFF
ALASKA
CANADIAN ROCKIES





Palm Trees, Mountains,
Flowers, Fruit Orchards,
Golden Sunshine: Recipe for
Happiness in Sunny California

**SEE MORE • DO MORE • SPEND LESS
ON YOUR 1937 VACATION**

Join a personally escorted, all-expense Bargain Tour this summer and know the joy of a wonderful vacation at amazingly low cost. See the best of the West, visit the most interesting places and stop at excellent hotels, noted for their cuisine and service. Traveling in comfortable Tourist Pullmans over the most scenic routes, you will "live on the fat of the land," eating the finest food, deliciously cooked and liberally served. In fact, you will wonder how it is possible to obtain so much travel value for so little money.

Since these are all-expense tours, you know the total cost of your vacation before you start. Your ticket includes everything . . . transportation, Pullman, all meals (with minor exceptions on certain tours), hotels, sightseeing trips, transfers, etc. An experienced travel escort accompanies each party, not to "rush" you but to relieve you of all responsibilities. These tours are "Vacations without a Care" in every sense of the word, and at much less cost than if you were to make the same trips independently.

Itineraries and costs in this booklet offer truly astonishing values for your travel dollar. Study them and see for yourself . . . then make reservations promptly for the most carefree, economical summer vacation you have ever had.

Night
Illumines
San Francisco's
Great Bay Bridge

CALIFORNIA • GRAND CANYON

14 DAYS—Tour X

Tour Departure Dates

X-1...June 13	X-5...July 11	X-9...Aug. 8
X-2...June 20	X-6...July 18	X-10...Aug. 15
X-3...June 27	X-7...July 25	X-11...Aug. 22
X-4...July 4	X-8...Aug. 1	X-12...Sept. 5

Sunday Lv. Chicago..... 10:30 A.M.....Burlington

Lv. St. Louis..... 2:00 P.M.....Burlington

Speeding westward aboard the crack air-conditioned "Aristocrat," enjoying delicious meals in our luxurious dining car and getting acquainted with our congenial traveling companions.

Monday Ar. Denver..... 1:15 P.M.....Burlington

During our stop here we enjoy a short sightseeing trip about the boulevards and charming parks of Denver, the "Mile-High Queen of the Rockies," before continuing westward.

Lv. Denver..... 4:00 P.M.....D&RGW

Our route leads through the tremendous six-mile Moffat Tunnel, newest of railroad routes to California, traversing the heart of the Colorado Rockies to Salt Lake City. From Salt Lake via Western Pacific. All day Tuesday through Nevada and the high Sierras on our way to the Pacific Coast.

Wednesday Ar. San Francisco..... 8:50 A.M.....Western Pacific

With headquarters at Whitcomb Hotel, we enjoy two wonderful days in this famous west coast metropolis. After luncheon Wednesday we tour the city in motor cars, visiting Twin Peaks, the Presidio, Cliff House (to "count the whiskers on the seals"), and other charming spots. Perhaps we may find time to drive out over the tremendous new bridge across the bay to Oakland—or out to the new bridge across the Golden Gate, the longest single span in the world. Thursday affords still further opportunities for sightseeing as well as time of our own to go shopping, or to see glamorous Chinatown and the Embarcadero where the ships of the world come to port.

A fascinating side trip under escort to Yosemite National Park can be arranged for only \$15.00 additional, leaving San Francisco 8:00 A.M. Thursday via Southern Pacific to Merced, then motoring up into the incomparable Yosemite, putting up overnight in the charming bungalows of Camp Curry. After a full day of exploring this wonderful playground, by motor down to Merced and the train, rejoining the rest of our tour party in Los Angeles Saturday morning.

Lv. San Francisco..... 6:00 P.M.....Southern Pacific **Thursday**

Ar. Los Angeles..... 8:15 A.M.....Southern Pacific **Friday**

What a time awaits us here—three days in the capital of Southern California with headquarters at the Clark Hotel (rooms with bath). Our program here is practically all our own to enjoy as we will. There is an auto trip Friday to see movieland's mansions at Hollywood, Beverly Hills and Santa Monica. The rest of the time is free to visit unique places for closeups of famous screen stars, sharing their night life and eating in the famous restaurants they frequent. So that we may indulge these pleasures to the utmost without additional expense, our tour includes no meals while in Los Angeles.

Ar. San Diego.....12:30 P.M.....By Motor **Monday**

After our delightful stay in Los Angeles, we motor southward Monday morning, down the coast through Long Beach and La Jolla to spend a day at San Diego. Overnight at the San Diego Hotel.

Lv. Los Angeles.....12:15 P.M.....Santa Fe **Tuesday**

Our "iron horse" is champing at the bit, and away we go through the green and gold scenery of the San Bernardino mountains, up over Cajon Pass, through desert and mountain, on the last leg of our glorious California vacation tour.

Ar. Grand Canyon.....10:00 A.M.....Santa Fe **Wednesday**

Arriving at Williams, motor cars wheel us off quickly to the gigantic Grand Canyon of Arizona, the world's most colossal abyss. The entire afternoon is ours to wander along the awesome brink, reveling in the incomparable majesty of the scene. Far below us the Colorado River seems a tiny silver thread as it carves its inexorable way through the blood red canyon walls. This tremendous scene beggars description and we are all a little breathless when we leave.

Lv. Grand Canyon..... 8:00 P.M.....Santa Fe **Wednesday**

Through the wheatfields of Kansas homeward bound, savoring the last moments of a wonderful tour, pausing enroute for all our meals at attractive Harvey dining rooms.

Ar. Kansas City..... 5:00 P.M.....Santa Fe **Friday**

Ar. St. Louis.....10:45 P.M..... (As you prefer) **Friday**

Ar. Chicago..... 7:40 A.M.....Santa Fe **Saturday**

COST OF COMPLETE TOUR

	From Chicago		From *St. Louis	
	Without Railroad Ticket	With Railroad Ticket	Without Railroad Ticket	With Railroad Ticket
Two Persons in Lower Berth (Each)	\$61.13	\$129.93	\$59.13	\$124.33
One Person in Lower Berth.....	71.00	139.80	67.75	132.95
One Person in Upper Berth.....	67.05	135.85	64.30	129.50

*Does not include Pullman between St. Louis and Burlington or Pullman or meals between Kansas City and St. Louis.

Additional cost for room with twin beds, \$4.00 per person; for single room, \$4.50.

The costs shown above "without rail ticket" are for the benefit of passengers coming from the East or South with through rail tickets.





Scenes in
Southern
California



14 DAYS Tour W

GRAND CANYON

Tour Departure Dates

W-1...June 13	W-4...July 11	W-6...Aug. 1
W-2...June 27	W-5...July 18	W-7...Aug. 8
W-3...July 4		W-8...Aug. 15

Sunday Lv. Chicago.....10:20 A.M. (CST).....Santa Fe
Lv. St. Louis.....2:00 P.M.....(*As you prefer*)

Monday Lv. Kansas City.....12:01 A.M.....Santa Fe

On this tour we take our meals enroute to California in fine Harvey dining rooms . . . excellent food and a diversion from our long train ride.

Tuesday Ar. Williams.....7:15 A.M.....Santa Fe

No tarrying over breakfast this morning with Grand Canyon awaiting us. Motors whirl us away to the South Rim of this breath-taking masterpiece of Nature. All day is ours to seek vantage points for marveling at the mighty chasm. The more adventurous have ample time for hikes down into the depths toward the tiny river a mile below. As the sun drops lower in the afternoon, the rainbow colors shift and fade . . . an incredibly beautiful sight.

Lv. Grand Canyon.....8:00 P.M.....Santa Fe

Morning finds us breakfasting in the desert country, but soon we climb up and over the San Bernardino mountains and plunge into California.

Wednesday Ar. Los Angeles.....12:20 P.M.....Santa Fe

Promptly on arrival we transfer to the Clark Hotel where we will be "at home abroad" until Saturday. Comfortable rooms with bath are assigned our party. Most of us will want to eat every meal in a different place while in Los Angeles, rubbing elbows with the movie stars and enjoying the varied menus of this cosmopolitan city. Consequently, we all "eat on our own" while here, thus avoiding double meal expense.

The afternoon of our first day includes a motor trip through the Wilshire district to romantic Hollywood and Beverly Hills, especially to see the homes of the screen people. We also visit Santa Monica and the seashore before returning to the hotel. Three full days are open for individual pleasures and for side trips—for example, to Catalina, San Diego, River-side, and the movie lots. You will find no lack of fascinating diversion.

Saturday Lv. Los Angeles.....6:15 P. M.....Southern Pacific

Dinner aboard the train . . . included, of course, in our tour.

COST OF COMPLETE TOUR

Including all necessary expenses, such as Tourist Pullman, Lodging (Two Persons to a Room, with Bath), Auto Trips as shown in itinerary, and all Meals except as otherwise stated.	From Chicago		From *St. Louis	
	Without Railroad Ticket	With Railroad Ticket	Without Railroad Ticket	With Railroad Ticket
Two Persons in Lower Berth (Each)	\$60.95	\$129.75	\$59.45	\$126.45
One Person in Lower Berth.....	72.70	141.50	70.45	137.45
One Person in Upper Berth.....	68.00	136.80	66.05	133.05

*No Pullman included from St. Louis to Kansas City. Neither meals nor Pullman are included from Chicago to St. Louis.

Additional cost for room with twin beds, \$3.75 per person. Single room, \$4.75 additional.

The costs shown above "without rail ticket" are for the benefit of passengers coming from the East or South with through rail tickets.



CALIFORNIA • PACIFIC NORTHWEST

Ar. San Francisco..... 7:50 A.M.....Southern Pacific **Sunday**

Motor cars wheel us promptly to our headquarters at the Hotel Whitcomb right in the downtown district, and only a short distance from the famed Civic Center. While in San Francisco all meals are provided at our hotel.

Sunday morning we have a rare sightseeing tour around the city, out along the Marine Drive through the Presidio, skirting the Golden Gate to see one of San Francisco's two vast bridges. We stop at famed Seal Rocks for a while before returning through the Golden Gate Park via Twin Peaks. The afternoon and all day Monday are left open for each of our guests to enjoy independently.

Lv. San Francisco..... 6:40 P.M.....Southern Pacific **Monday**

The Pacific Northwest is next on our itinerary and we start out by crossing the Bay under the gigantic Oakland Bridge — a thrilling preliminary indeed. All day Tuesday we speed northward through the impressive scenery of Northern California and Oregon to arrive in Portland at 3:35 P.M. There is still time for a delightful tour of the numerous parks and boulevards of the famous "Rose City" before dinner at the Benson Hotel. The evening is all too short before train time.

Lv. Portland.....11:30 P.M.....Great Northern **Tuesday**

Ar. Seattle..... 6:45 A.M.....Great Northern **Wednesday**

Two days are allotted for our stay in this interesting metropolis on Puget Sound, with the New Washington Hotel for headquarters. After a motor tour Wednesday morning, there is still time for a side trip to glorious Mt. Rainier or across the sound by steamer to Victoria. There are so many splendid opportunities for side trips and personal excursions in and around Seattle that meals while here are excluded from our tour in the interests of economy and time-saving.

Lv. Seattle.....*9:15 P.M. †10:15 P.M.....Thursday

*Tours 1-3-5-7 return via Northern Pacific.

†Tours 2-4-6-8 return via Great Northern.

Your opportunity to stop over on the return trip for a tour of Yellowstone or Glacier National Parks. Arrangements should be made at time of booking.

Ar. Minneapolis.....*10:12 P.M.	†10:00 P.M.	Saturday
Ar. St. Paul.....*10:45 P.M.	†10:30 P.M.	Saturday
Ar. Chicago.....* 8:45 A.M.	† 8:40 A.M. Burlington	Sunday
Ar. St. Louis..... 5:10 P.M.	5:10 P.M.	Sunday



Tour Departure Dates

CR-1..June 27	CR-4..July 18	CR-6..Aug. 8
CR-2..July 4	CR-5..Aug. 1	CR-7..Aug. 15
CR-3..July 11		CR-8..Aug. 22

Sunday	Lv. Chicago.....10:10 A.M. (CST).....Burlington St. Louis passengers join us at Chicago. Together we start out over the famous Water Level Route following the Mississippi, "where nature smiles for 300 miles," along one of the finest road beds to be found anywhere in the world.
	Lv. St. Paul.....9:45 P.M.....Soo Line Westward we speed through the beautiful lake country of Minnesota and the vast wheat fields of Saskatchewan.
Tuesday	Ar. Banff.....9:35 A.M.....Canadian Pacific Here in the heart of the Canadian Rockies we stop for a day, putting up at the majestic Banff Springs Hotel. A wonderful day of mountain hiking, riding, swimming, tennis and other recreations.
Wednesday	Ar. Lake Louise.....7:00 A.M.....Canadian Pacific Two full days at lovely Lake Louise seems all too short a time to enjoy such incomparable scenery. We browse along the wooded shores or perhaps up to Victoria Glacier, returning to rustic Deer Lodge for meals and overnight.
Thursday	Lv. Lake Louise.....11:30 P.M.....Canadian Pacific All day Friday our car windows frame magnificent views of mountains, lakes, rivers and deep forests, as we speed on westward toward happy days on the Pacific Coast.
Friday	Ar. Vancouver.....10:30 P.M.....Canadian Pacific Overnight at the Hotel Georgia, in rooms with bath. Our motor tour of the city on Saturday brings forth many interesting sights, including the curious Hindu section, Stanley Park, and flower-fenced homes in the Shaughnessy Heights section.
Saturday	Lv. Vancouver.....11:30 P.M.....By Steamship
Sunday	Ar. Victoria.....7:00 A.M.....By Steamship After a delightful overnight boat trip across the Strait of Georgia we find sightseeing in this "bit of Old England" a real joy. Between meals at the Empress Hotel our party makes the most of an eventful day, with an auto trip in the morning, visiting the beautiful residential sections.

13 DAYS
Tour CR

CANADIAN ROCKIES

Glorious Veranda Scene
at Banff
Springs Hotel



Lv. Victoria..... 5:00 P.M.....By Steamship Sunday

Sunset overtakes us as we cross Puget Sound . . . a fascinating four-hour trip by Canadian Pacific steamship.

Ar. Seattle..... 9:00 P.M.....By Steamship

Two days of pleasant excursions from the fine new Benjamin Franklin Hotel, starting with a motor tour of downtown Seattle, the many boulevards and parks, Lake Union, Lake Washington and the Queen Ann Hill residential section. Monday afternoon and Tuesday are left open for personal pleasures, such as the short side trip to Mt. Rainier National Park. The additional cost is quite low.

There are so many interesting things to do, so many fascinating places to see in and around Seattle, that meals while here are not included in our tour.

Lv. Seattle..... 4:20 P.M.....Great Northern Tuesday

Ar. Portland..... 9:20 P.M.....Great Northern

A delightful adventure entitled "24 hours in the Rose City," features a morning scenic tour of the most beautiful sections of the city. We make our headquarters at the excellent Multnomah Hotel for all our meals and an overnight stop in rooms with bath.

Lv. Portland..... 9:30 P.M.....S.P.&S.....Wednesday

†Tours CR-1-3-5-7 via Great Northern, Spokane to St. Paul.

*Tours CR-2-4-6-8 via Northern Pacific, Spokane to St. Paul.

Take advantage of this opportunity for stopovers in the geyser wonderland of Yellowstone National Park or the rugged grandeur of Glacier National Park. Those who have a little more time will find their trip to either of these great Western playgrounds well worth while on the return journey. Glacier tours vary from one day to as long as you might want; the standard tour in Yellowstone is four days. Arrangements should be made at time of booking.

Ar. Minneapolis ..†10:00 P.M. *10:45 P.M. Friday

Ar. St. Paul.....†10:30 P.M. *10:12 P.M. Friday

Ar. Chicago† 8:40 A.M. * 8:45 A.M. (CST) Burlington Saturday



and the PACIFIC NORTHWEST

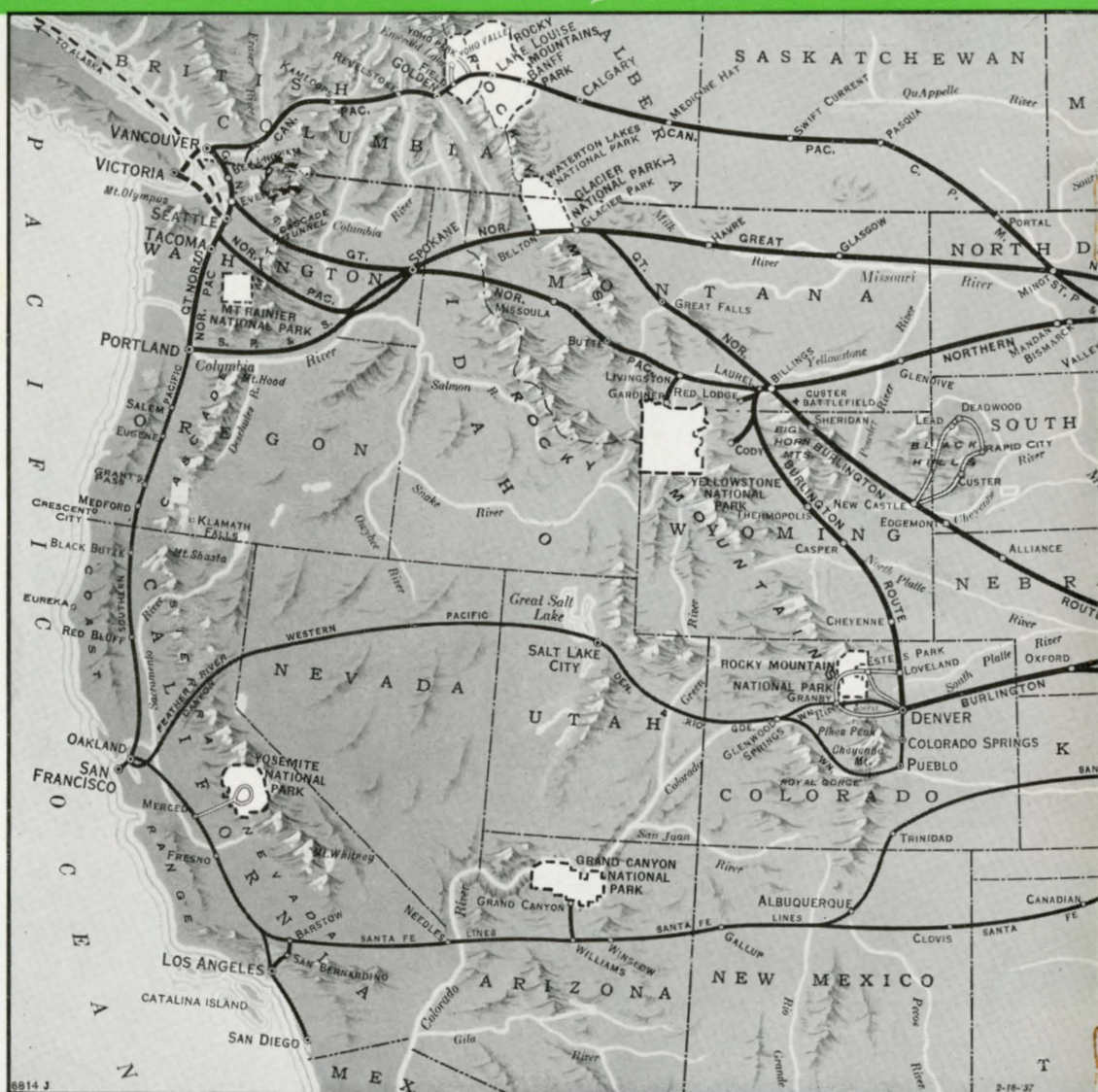
COST OF COMPLETE TOUR

Including all necessary expenses, such as Tourist Pullman, Lodging (Two Persons to a Room, with †Bath), Meals (except in Seattle) and Auto Trips as shown in itinerary.	From Chicago and *St. Louis	
	Without Railroad Ticket	With Railroad Ticket
Two Persons in Lower Berth (Each)...	\$65.78	\$134.58
One Person in Lower Berth.....	75.35	144.15
One Person in Upper Berth.....	71.60	140.40

*No meals or Pullman included between St. Louis and Chicago.
†Except at Deer Lodge.
Single room, \$5.50 additional. Room with twin beds, \$3.25 per person additional.
The costs shown above "without rail ticket" are for the benefit of passengers coming from the East or South with through rail tickets.

Mountain Vista in the Canadian Rockies





This is the route map of the Western Wonderlands you visit on our Bargain Escorted Tours . . . joyous, economical vacation trips that take you to the Grand Canyon, Sunny California, the Pacific Northwest, Alaska's mighty panoramas, Canadian Rockies, Colorado's mountainlands. Here you can follow the route of the tour you decide to take, get some idea



of the fascinating places you will visit going and returning. All the joys, surprises, adventures and thrills that will be yours every day of your trip will be spiced by the constant pleasant realization that someone else, your tour escort, is looking after all your travel problems, relieving you of all details. All you have to do is just "Have a Good Time!"

Alaska's
Majestic
Mountainland

ALASKA TOUR

20 DAYS — Tour U

Canadian Rockies • Pacific Northwest • Skagway • Sitka

Tour Departure Dates

U-1...July 4	U-3...Aug. 1	U-4...Aug. 15
U-2...July 11		U-5...Aug. 22

Sunday	Lv. Chicago.....10:10 A.M. (CST).....Burlington Our Alaskan adventure begins with a charming "cruise" along the Mississippi River to the Twin Cities.
	Lv. St. Paul..... 9:45 P.M.....Soo Line
Tuesday	Ar. Banff..... 9:35 A.M.....Canadian Pacific Here we spend a memorable day at luxurious Banff Springs Hotel in the shadow of snow-capped peaks. Presently we continue our journey to Deer Lodge and the inconceivably beautiful Lake Louise, where we spend two wonderful days enjoying the thrills and delights of mountain hiking, riding and "camera hunting."
Thursday	Lv. Lake Louise.....11:30 P.M.....Canadian Pacific Westward once more our itinerary takes us, through the heart of the Canadian Rockies, with new scenic vistas unfolding every mile.
Friday	Ar. Vancouver.....10:30 P.M.....Canadian Pacific Overnight at Hotel Georgia. With an entire day allotted to this interesting stopover, our tour includes a leisurely sightseeing trip throughout the city to Stanley Park, the residential section and other attractive places. Late in the evening we board a trim little steamer that carries us across the Strait of Georgia . . . a pleasant forerunner for our main salt water excursion to the great Alaskan country.
Sunday	Morning finds us in Victoria, a city that is in many ways reminiscent of Old England. Our day's stay includes a really delightful motor tour, and in the afternoon we cross Puget Sound, to Seattle.
Sunday	Ar. Seattle..... 9:00 P.M.....C.P.S.S. Co. With headquarters established at the fine Benjamin Franklin Hotel, we lose no time in making the most of our final hours before we sail. The greater part of our remaining time is left open for individual pleasure, except for a motor tour Monday morning.

Lv. Seattle 9:00 A.M. Alaska S.S. Co.

Tuesday

The gangplank is up, the whistle sounds, and we're off on a trim steamer for Alaska, with ten days of thrilling adventure in and around Uncle Sam's own foreign land ahead of us. Our voyage takes us via the "Inside Passage," between islands and mainland, where the sheltered waters offer a delightfully restful cruise free from "the landlubber's curse": Seasickness.

Fascinating shore excursions on our way north are made at Ketchikan and Wrangell where the totem poles "grow," at Petersburg and Juneau, redolent with Indian lore and rich in romance and story, and at Taku Glacier's mighty river of ice.

Saturday morning finds us in Skagway, the gateway city to the wilderness of the Yukon territory. From here a tremendously thrilling side trip by train can be made over White Pass to Lake Bennett over the famous "Trail of '98" of gold rush days. Additional cost for this fascinating side trip is only \$7.50.

The return trip to Seattle takes us over much the same route except that Sitka, the most interesting city in Alaska, is added to our shore leaves. In the very early days of Northwest settlement when Russia owned this territory, Sitka was the capital of her Alaskan domain. The quaint old church and many of those picturesque early homes still stand as they did years ago when Alaska was only a wilderness.

Ar. Seattle Morning Alaska S.S. Co.

Saturday

Our voyage of adventure ends as we step ashore in Seattle, regretfully, yet glad to be back on familiar American soil. The New Washington Hotel is our headquarters before we begin our homeward journey through the great Northwest country.

Lv. Seattle * 9:15 P.M. † 10:15 P.M. Thursday

Thursday

†Tours 1-4 return via Great Northern.

*Tours 2-3-5 return via Northern Pacific.

Take advantage of this opportunity for stopovers in the geyser wonderland of Yellowstone National Park or the rugged grandeur of Glacier National Park. Those who have a little more time will find their trip to either of these great Western playgrounds well worth while on the return journey. Glacier tours vary from one day to as long as you might want; the standard tour in Yellowstone is four days. Arrangements should be made for such stopovers at time of booking.

Ar. Minneapolis *10:12 P.M. † 10:00 P.M. Saturday

Ar. St. Paul *10:45 P.M. † 10:30 P.M. Saturday

Ar. Chicago * 8:45 A.M. † 8:40 A.M. Burlington Sunday

COST OF COMPLETE TOUR

Including all necessary expenses, such as Tourist Pullman, Lodging, all Meals, and Auto Trips as shown in itinerary.	From Chicago and *St. Louis	
	Without Railroad Ticket	With Railroad Ticket
Two Persons in Lower Berth (Each) . . .	\$154.73	\$223.53
One Person in Lower Berth	164.30	233.10
One Person in Upper Berth	160.55	229.35

*No meals or Pullman are included between St. Louis and Chicago.

Rooms with bath are provided (two persons to a room), except at Deer Lodge. Above costs contemplate berth in minimum-rate rooms on boat. Superior accommodations may be had at slightly higher rate.

Single room at hotels, \$5.75 additional; twin-bed room, \$3.50 extra per person.

The costs shown above "without rail ticket" are for the benefit of passengers coming from the East or South with through rail tickets.





Calm Waters, Happy Days, Glorious Scenery

COST OF COMPLETE TOUR

Including all necessary expenses, such as Tourist Pullman, Lodging, all Meals, and Auto Trips as shown in itinerary.	From Chicago and *St. Louis	
	Without Railroad Ticket	With Railroad Ticket
Two Persons in Lower Berth (Each)...	\$159.23	\$228.03
One Person in Lower Berth.....	168.80	237.60
One Person in Upper Berth.....	165.05	233.85

*No Pullman or meals included between St. Louis and Chicago.

Rooms with bath (two persons to a room) are provided except at Deer Lodge. Minimum accommodations are included on boat; however, superior accommodations may be secured at slightly higher rates.

Single room at hotels, \$5.50 additional. Twin-bed room, \$3.25 extra per person.

The costs shown above "without rail ticket" are for the benefit of passengers coming from the East or South with through rail tickets.

ALASKA • CANADIAN ROCKIES

20 DAYS—Tour V

Tour Departure Dates

V-1...June 27	V-4...July 18	V-6...Aug. 8
V-2...July 4	V-5...Aug. 1	V-7...Aug. 15
V-3...July 11		V-8...Aug. 22

- Sunday** Lv. Chicago.....10:10 A.M. (CST).....Burlington
From Chicago's great Union Station we embark on the first leg of our cruise to America's last frontier, with a charming trip along the Father of Waters to St. Paul . . . leaving there 9:45 P.M. On westward across the great plains and into the Canadian Rockies at Banff.
- Tuesday** Ar. Banff..... 9:35 A.M.....Canadian Pacific
The luxurious Banff Springs Hotel welcomes us for a while. Then on to lovely Lake Louise for two days of roaming the mountains, with headquarters this time at Deer Lodge.
- Thursday** Lv. Lake Louise.....11:30 P.M.....Canadian Pacific
- Friday** Ar. Vancouver.....10:30 P.M.....Canadian Pacific
Our final day ashore is spent in Vancouver, with meals and overnight at the Hotel Georgia, before we begin our memorable nine-day cruise through sheltered seas to adventures under the Midnight Sun.
- Saturday** Lv. Vancouver..... 9:00 P.M.....C.P.S.S. Co.
Off at last on the most unusual "ocean" trip in the world . . . across Queen Charlotte Sound to Alert Bay and Prince Rupert, stopping briefly at each port. Following the calm waters of the "Inside Passage," we steam north with fascinating shore excursions at Ketchikan, home of the fishing fleets; and Petersburg, famous for its shrimp and crab canneries.
- Tuesday** Our next stop is Juneau, capital of the Alaska Territory, surrounded by sea and towering mountains. Near here we steam up close to the face of Taku Glacier, one of Alaska's strange and mighty rivers of ice—an unforgettable sight.
- Wednesday** Wednesday finds us landing at Skagway with two thrilling days for side trips into the nearby wilderness. We may travel the way of the prospectors to Lake Bennett for only \$6.50 extra, or to West Taku Arm for only \$21.50 extra. Arrangements for these trips can be made at the time of booking your tour.



A Morning
Canter on the
Shore of Lake Louise

• PACIFIC NORTHWEST

On our return voyage we cover practically the same route, enjoying every minute of shipboard diversions and companionship, and the beauty of sailing romantic seas. We find new wonders and delights on every one of our all-too-brief shore excursions.

Ar. Vancouver..... 8:00 A.M..... C.P.S.S. Co.
Here we transfer from our floating home of the past nine days to a Puget Sound steamer, stopping several hours in Victoria.

Monday

Ar. Seattle..... 9:00 P.M..... C.P.S.S. Co.
Back on American soil once more we spend the night at the excellent Benjamin Franklin Hotel with an interesting sightseeing tour of Seattle arranged for Tuesday morning.

Monday

Lv. Seattle..... 4:20 P.M..... Great Northern

Tuesday

Ar. Portland..... 9:20 P.M..... Great Northern
Overnight at the Multnomah Hotel. Wednesday brings a delightful auto trip around the justly famed "Rose City." All meals while in Portland served at our hotel.

Lv. Portland..... 9:30 P.M..... S.P.&S..... Wednesday
†V-1-3-5-7 via Great Northern Spokane to St. Paul.
*V-2-4-6-8 via Northern Pacific Spokane to St. Paul.

Take advantage of the opportunity for stopovers at Yellowstone or Glacier National Parks on your return trip. Tours in Glacier vary from one day to as long as you wish, while the standard Yellowstone tour is four days. Arrangements should be made at time of booking.

Ar. Minneapolis *10:12 P.M.	†10:00 P.M.	Friday
Ar. St. Paul.....*10:45 P.M.	†10:30 P.M.	Friday
Ar. Chicago* 8:45 A.M.	† 8:40 A.M. Burlington	Saturday



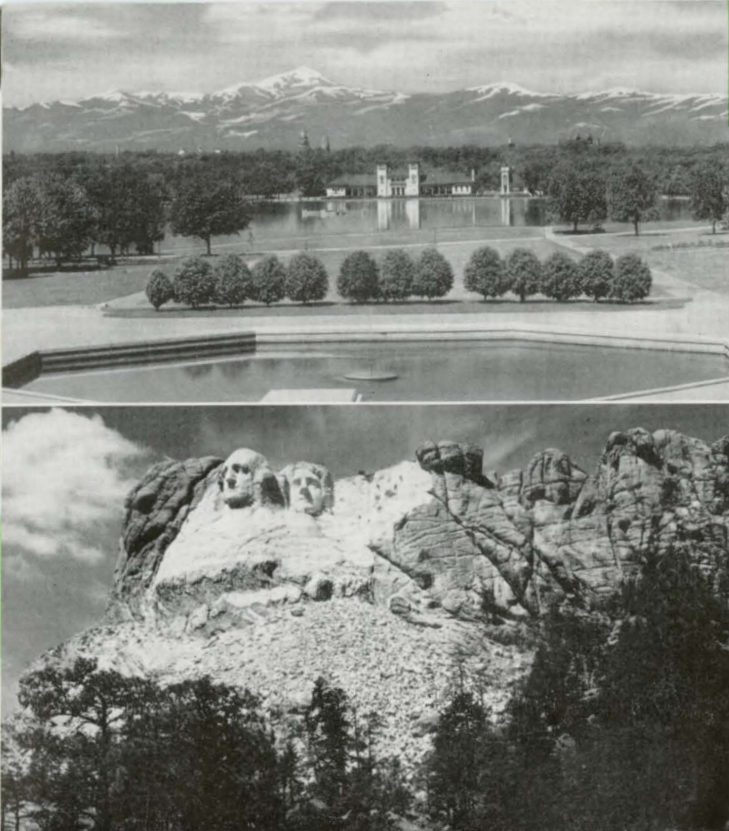
Historic Skagway
at the Head of
Lynn Canal

Fascinating

The group of Bargain Tours to the Colorado Rockies and the Black Hills of South Dakota, described briefly on the opposite page, offer remarkable vacation values for those whose vacation time and budget are limited. Like all Burlington Escorted Tours, they are personally escorted and offered on the all-expense plan . . . including round-trip railroad transportation, train accommodations (as you prefer), lodging at the best of hotels, motor sightseeing to many of the most interesting places, and truly delicious meals wherever we go.

(Top)—Cheesman Park, one of Denver's lovely city playgrounds, backed by the snowy peaks of the Rockies.

(Left)—Colossal stone faces carved from the solid rock of Mt. Rushmore, in the Black Hills of South Dakota.



(Above)—Tourists pause on the rim of the Grand Canyon of Arizona to wonder at the mighty works of Nature.

(Left, above)—Fern Lake lies in a perfect setting below Stone Mountain, in Rocky Mountain National (Estes) Park, Colorado.

(Left, below)—The inner harbor and Parliament Building at Victoria, B. C., where visitors from the mainland disembark.



COLORADO - BLACK HILLS TOURS

COLORADO TOURS

7 DAYS—Tour No. 1

10 DAYS—Tour No. 3

DENVER
COLORADO SPRINGS
GARDEN OF GODS
PIKES PEAK

ROCKY MOUNTAIN
NATIONAL (ESTES) PARK

Leaving Chicago and St. Louis Sundays, June 20-Sept. 5, inclusive
From Chicago 10:30 A.M. (CST) on the "Aristocrat," from St. Louis 2:00 P.M. on "Colorado Limited." Sightseeing in Denver on arrival Monday afternoon. Overnight in Colorado Springs at Broadmoor Hotel; a full day of motoring through Garden of Gods to summit of Pikes Peak. Overnight in Denver at Shirley-Savoy Hotel, motoring Wednesday to Estes Park Chalets for over two days (5 days on No. 3 Tour). Back same route. The return via Trail Ridge Road and Grand Lake can be included for \$8.00 additional.

Tour No. 1 leaves Denver Friday 8:00 P.M., arriving St. Louis 9:15 P.M., Chicago 7:50 P.M., Saturday. Tour No. 3 leaves Denver Monday and arrives at St. Louis and Chicago Tuesday, same hours as on Tour No. 1.

All-expense Costs:	From CHICAGO		From ST. LOUIS	
	7-Day	10-Day	7-Day	10-Day
In Sleeper (2 in a Lower, each).....	\$82.58	\$97.58	\$77.17	\$92.17
In Chair Car (Lvg. July 11, 18, 25, Aug. 1, 8)	69.35	84.35	66.00	81.00

COLORADO TOURS

7 DAYS—Tour No. 2

10 DAYS—Tour No. 4

DENVER
COLORADO SPRINGS
PIKES PEAK
ROYAL GORGE
TENNESSEE PASS
GLENWOOD SPRINGS
DOTSERO CUT-OFF
GRAND LAKE
TRAIL RIDGE ROAD

ROCKY MOUNTAIN
NATIONAL (ESTES) PARK

Leaving Chicago and St. Louis Sundays, June 20-Sept. 5, inclusive
Leave Chicago 10:30 A.M. (CST) via the "Artistocrat," St. Louis 2:00 P.M. on "Colorado Limited." Motoring about Denver on arrival Monday afternoon, overnight at Shirley-Savoy Hotel. Tuesday at Colorado Springs, motoring to Pikes Peak via Garden of the Gods, overnight at Broadmoor Hotel. By train Wednesday through Royal Gorge to Glenwood Springs, overnight at Colorado Hotel, back via Dotsero Cut-Off to Granby. Motor to Grand Lake, over Trail Ridge Road to Estes Park Chalets for a day (4 days on No. 4 Tour), then to Denver.

Tour No. 2 leaves Denver Friday 8:00 P.M., arrives St. Louis 9:15 P.M., Chicago 7:50 P.M. Saturday. Tour No. 4 leaves Denver Monday and arrives at St. Louis and Chicago Tuesday, same hours as on Tour No. 2.

All-expense Costs:	From CHICAGO		From ST. LOUIS	
	7-Day	10-Day	7-Day	10-Day
In Sleeper (2 in a Lower, each).....	\$94.68	\$109.68	\$89.27	\$104.27
In Chair Car (Lvg. July 11, 18, 25, Aug. 1, 8)	81.45	96.45	78.10	93.10

BLACK HILLS TOURS

7 DAYS—Tour No. 6

CUSTER
MT. COOLIDGE
STATE GAME LODGE
SYLVAN LAKE
MT. RUSHMORE
RAPID CITY
DEADWOOD
SPEARFISH CANYON

Leaving Chicago and St. Louis Sundays June 20-Sept. 5, inclusive
From Chicago 10:30 A.M. (CST) on "Aristocrat," from St. Louis 2:00 P.M. on arrival at Newcastle, Monday 2:45 P.M. motoring via historic Custer and Mt. Coolidge to State Game Lodge, remaining until Wednesday morning. Wednesday through Aisle of Pines and over the weird Needles Highway to Sylvan Lake, then via Mt. Rushmore and the world's most colossal statues, to glamorous Deadwood, Lead of gold-mining fame, and Mt. Roosevelt. Two nights at Franklin Hotel in Deadwood. Through Spearfish Canyon Friday down to the train at Newcastle.

Leaving Newcastle 2:45 P.M. Friday, arriving St. Louis 5:45 P.M. and Chicago 7:50 P.M., Saturday.

All-expense Costs:	From CHICAGO		From ST. LOUIS	
In Sleeper (2 in a Lower, each).....	\$81.45		\$80.98	
In Chair Car (Lvg. July 11, 18, 25, Aug. 1, 8)	69.35		69.10	

NOTE: Special folder, giving full details about these tours as well as other Bargain Tours to Colorado and the Black Hills of South Dakota, is available on request.



In case you do not know what the interior of a Tourist Sleeping Car is like . . . clean, comfortable, well lighted and economical



Pullman Tourist Cars

Tourist Sleepers are used on the Bargain Tours described in this booklet (except on Colorado-Black Hills tours). In case you do not know what a Tourist Sleeper is, let it be said that these are high-grade Pullman cars in every way. A little less modern than cars designated as Pullman Standard Sleepers, they are not air conditioned but they are equipped with the same travel conveniences . . . seats by day and berths by night, clean, fresh bed linens, comfortable mattresses, ice water on tap, dressing rooms, electric lighting, and porter service the same as Standard cars. The main difference is that Tourist Sleeper accommodations are offered at reduced rates that represent unusual values in summer vacation travel.

Tour Bookings

Final payment for complete tour ticket must be made at least seven days before tour departure date.

Rates and itineraries shown herein are subject to change without notice due to revision of train or motor schedules or for other causes. Chicago arrivals and departures shown in Central Standard Time.

Booking for tours should be arranged through R. S. Caird, Manager, Burlington Escorted Tours, 547 West Jackson Blvd., Chicago, or through any Burlington Route, Great Northern or Northern Pacific representative shown on following pages. These representatives are authorized agents for these tours and are prepared to render every assistance in the way of supplying detailed information, making reservations and definitely booking passengers. We reserve the right to decline any application.

Purchase Through Rail Ticket

Passengers coming from points east or south of Chicago or St. Louis should purchase through intermediate class ticket from home station and thus obtain full benefit of low round-trip rail fare.

How to Extend Your Tour

It is a simple matter to prolong your visit on the Pacific Coast. Merely leave one tour at Los Angeles, San Francisco or Seattle and join a later party for the return trip. Or you may use a tour for your going trip and return independently, and vice versa. If arrangements for such variations are made at time of booking, allowance will be made for unused portion of complete tours.

Apparel and Baggage

Weather on these tours is almost universally warm, therefore we would suggest lightweight sport outfits for day wear, with comfortable shoes for walking and, of course, change of costume for dinner and evening pleasures (not formal attire). It would be well also to have cold cream for sunburn and chapped lips.

We would also suggest one medium-sized traveling bag as being sufficient for a tour of two weeks or less. Trunks are unnecessary.

Mail and Telegrams

Mail and telegrams for members of tour parties shown herein should be addressed c/o Burlington Escorted Tour (X-1, CR-3, U-4, Colorado Tour No. 2, or any other tour, as the case may be), at hotels or lodges as shown in itineraries.

Our Tour Escorts

The Escorts who accompany all Burlington Tours are courteous and competent men, travel experts whose duty it is to see that you are relieved of all cares and responsibilities wherever your itinerary takes you. Necessarily, they are business men, since they take care of all business arrangements. More than that, we believe you will find them congenial travel companions, always willing (even anxious) to see that you enjoy every minute of your vacation.



Seattle, Washington, Popular City of the Pacific Northwest.

"BURLINGTON ESCORTED TOURS" REPRESENTATIVE

City	Address	Representative and Title	Railroad
ATLANTA, GA.....	516 Healy Bldg.....	W. T. Vardaman, General Agent.....	Burlington
BOSTON.....	80 Boylston St.....	F. F. Johnson, General Agent.....	Burlington
	120 Boylston St.....	J. H. Kenney, New Eng. Pass. Agt.....	Great Northern
	236 Old South Bldg.....	Jared Jernegan, Dist. Pass. Agent.....	Northern Pacific
BUFFALO, N. Y.....	716 Ellicott Sq.....	C. W. Beardsell, Dist. Pass. Agent.....	Northern Pacific
BURLINGTON, IOWA.....	Burlington Bldg.....	J. T. Teeter, Div. Pass. Agent.....	Burlington
CHICAGO, ILL.....	179 W. Jackson St.....	{ S. J. Owens, Gen. Agt. Pass. Dept.....	Burlington
		{ Emma W. Bock, Tour Rep.....	Burlington Tours
	73 E. Jackson Blvd.....	G. W. Rodine, Gen. Agent Pass. Dept.....	Northern Pacific
	212 South Clark St.....	E. H. Moot, Gen. Agent Pass. Dept.....	Great Northern
CINCINNATI.....	505 Dixie Terminal Bldg.....	J. C. Boyer, General Agent.....	Burlington
	608 Traction Bldg.....	J. H. Brinkman, General Agent.....	Great Northern
	615 Gwynne Bldg.....	R. H. McCurdy, Gen. Agt. Pass. Dept.....	Northern Pacific
CLEVELAND.....	1033 Terminal Tower.....	S. S. Hankis, General Agent.....	Burlington
	1334 Terminal Tower.....	Willard Adamson, General Agent.....	Northern Pacific
	508 Hippodrome Bldg.....	F. L. Cobb, Dist. Pass. Agent.....	Great Northern
DES MOINES, IOWA.....	6th and Mulberry.....	D. A. Coffeen, City Pass. Agent.....	Burlington
	328 Des Moines Bldg.....	Frank Harlan, Dist. Pass. Agent.....	Northern Pacific
	305 Equitable Bldg.....	O. W. Pierce, Dist. Pass. Agent.....	Great Northern
DETROIT.....	704 Transportation Bldg.....	F. L. Gannaway, General Agent.....	Burlington
	Lobby, Transportn. Bldg.....	H. G. Schuette, General Agent.....	Great Northern
	1006 Transportation Bldg.....	Geo. Barnes, General Agent.....	Northern Pacific
GALESBURG, ILL.....	Burlington Station.....	C. I. Twyman, Div. Pass. Agent.....	Burlington
HANNIBAL, MO.....	3rd and Lyon Sts.....	Paul Anderson, Div. Pass. Agent.....	Burlington
INDIANAPOLIS.....	910 Merchants Bank Bldg.....	W. P. O'Rourke, General Agent.....	Burlington
KANSAS CITY, MO.....	701 Walnut St.....	B. L. Gartside, Gen. Agent Pass. Dept.....	Burlington
	116 Ry. Exchange Bldg.....	Neil Baird, General Agent.....	Northern Pacific
	544 Ry. Exchange Bldg.....	C. A. Rand, Gen. Agent Pass. Dept.....	Great Northern
LINCOLN, NEBR.....	142 S. Thirteenth St.....	H. P. Kauffman, Gen. Agt. Pass. Dept.....	Burlington
MILWAUKEE.....	221 Wisconsin Ave.....	C. J. Leydon, General Agent.....	Burlington
	502 Majestic Bldg.....	B. C. Culbertson, General Agent.....	Great Northern
	1418 Majestic Bldg.....	R. L. Kelly, General Agent.....	Northern Pacific
MINNEAPOLIS.....	90 S. Seventh St.....	J. E. Lynn, Gen. Agt. Pass. Dept.....	Burlington
	701 Marquette Ave.....	C. S. Kirkland, Gen. Agt. Pass. Dept.....	Northern Pacific
	640 Marquette Ave.....	C. M. Cornelius, Gen. Agt. Pass. Dept.....	Great Northern
NEW ORLEANS.....	228 Baronne St.....	A. R. Brown, General Agent.....	Burlington
NEW YORK CITY.....	500 Fifth Ave. (cor. 42nd St.)	M. J. Fox, Dist. Pass. Agent.....	Burlington
	595 Fifth Ave.....	M. M. Hubbert, Gen. East. Pass. Agt.....	Great Northern
	560 Fifth Ave.....	H. M. Fletcher, Asst. Gen. Pass. Agt.....	Northern Pacific
OMAHA, NEBR.....	1004 Farnam St.....	J. W. Sharpe, Gen. Agt. Pass. Dept.....	Burlington
PEORIA, ILL.....	301 S. Jefferson Ave.....	W. A. Stingley, General Agent.....	Burlington
PHILADELPHIA.....	215 No. Amer. Bldg.....	E. H. Smith, General Agent.....	Burlington
	504 Finance Bldg.....	A. E. Rohmer, Dist. Pass. Agent.....	Great Northern
	926 Fid.-Phila. Trust Bldg.....	B. M. Decker, General Agent.....	Northern Pacific
PITTSBURGH.....	1728 Koppers Bldg.....	A. G. Mathews, General Agent.....	Burlington
	608 Park Bldg.....	C. T. Penn, Gen. Agt. Pass. Dept.....	Northern Pacific
	602 Oliver Bldg.....	P. H. Yorke, General Agent.....	Great Northern
QUINCY, ILL.....	400 Maine St.....	B. R. Newlon, Div. Pass. Agent.....	Burlington
ST. JOSEPH, MO.....	110 S. Fifth St.....	S. T. Abbott, Div. Pass. Agent.....	Burlington
ST. LOUIS, MO.....	322 N. Broadway.....	{ C. B. Ogle, Gen. Agt. Pass. Dept.....	Burlington
		{ L. W. Smith, Tour Rep.....	Burlington Tours
	520 Boatmen's Bank Bldg.....	J. M. Sanford, General Agent.....	Great Northern
	440 Boatmen's Bank Bldg.....	R. K. Cross, General Agent.....	Northern Pacific
ST. PAUL.....	6th and Roberts St.....	S. L. Mentzer, Gen. Agt. Pass. Dept.....	Burlington
	4th and Roberts Sts.....	M. R. Johnson, Gen. Agt. Pass. Dept.....	Northern Pacific
	4th and Minnesota Sts.....	W. G. Mitsch, City Ticket Agent.....	Great Northern
WASHINGTON, D. C.....	309 Woodward Bldg.....	F. F. Crabbe, General Agent.....	Burlington
	303 Nat'l Press Bldg.....	E. H. Whitlock, General Agent.....	Great Northern

R. S. CAIRD, Manager, Burlington Escorted Tours
547 West Jackson Blvd., Chicago, Ill.