

BURLINGTON

ESCORTED TOURS

"We'll show you the West"



OPERATED BY

BURLINGTON ROUTE

NORTHERN PACIFIC RY.

GREAT NORTHERN RY.

Index of Burlington Escorted Tours

GLACIER and YELLOWSTONE NATIONAL PARKS	Page
Tour A—13 Days.....From Chicago and St. Louis Sundays.....	4
Tour C—12 Days.....From Chicago and St. Louis Tuesdays.....	14
YELLOWSTONE NATIONAL PARK and COLORADO	
Tour B—12 Days.....From Chicago and St. Louis Saturdays.....	8
Tour D—10 Days.....From Chicago and St. Louis Sundays.....	16
GLACIER NATIONAL PARK	
Tour G—7 Days.....From Chicago and St. Louis Sundays.....	26
YELLOWSTONE NATIONAL PARK	
Tour I—7 Days.....From Chicago and St. Louis Saturdays.....	30
Tour J—7 Days.....From Chicago and St. Louis Sundays.....	30
GLACIER NATIONAL PARK and CANADIAN ROCKIES	
Tour E—13 Days.....From Chicago and St. Louis Sundays.....	21
PACIFIC NORTHWEST, YELLOWSTONE and GLACIER	
Tour H—14 Days.....From Chicago and St. Louis Sundays.....	28
PACIFIC NORTHWEST, RAINIER and CANADIAN ROCKIES	
Tour F—13 Days.....From Chicago and St. Louis Sundays.....	24
BLACK HILLS and YELLOWSTONE NATIONAL PARK	
Tour L—10 Days.....From Chicago and St. Louis Saturdays.....	36
COLORADO-CALIFORNIA and GRAND CANYON	
Tour O—14 Days.....From Chicago and St. Louis Sundays.....	44
Tour P—20 Days.....From Chicago and St. Louis Sundays.....	46
CALIFORNIA-PACIFIC NORTHWEST	
Tour N—14 Days.....From Chicago and St. Louis Sundays.....	39
CALIFORNIA-PACIFIC NORTHWEST-CANADIAN ROCKIES	
Tour N-F—21 Days.....From Chicago and St. Louis Sundays.....	42
ALASKA-PACIFIC NORTHWEST	
Tour R—21 Days or 27 Days.....From Chicago and St. Louis Sundays.....	52
Tour S—17 Days.....From Chicago and St. Louis Mon. & Thur... ..	54
Tour T—20 Days.....From Chicago and St. Louis Sundays.....	56
HAWAII	
Tour HN—25 Days.....From Chicago and St. Louis July 21.....	48
COLORADO BARGAIN TOURS	
8 and 15 Days.....From Chicago and St. Louis Sundays.....	59

Combination Tours

Yellowstone-Glacier-Canadian Rockies—18 Days.....	60
Black Hills-Yellowstone-Glacier—15 Days.....	60
Glacier-Yellowstone-Colorado—19 Days.....	60
Glacier-Pacific Northwest-Canadian Rockies—20 Days.....	60
Yellowstone-Pacific Northwest-Canadian Rockies—18 Days.....	61
Yellowstone-Colorado-California—21 Days.....	61
Yellowstone-California-Pacific Northwest—21 Days.....	61
Yellowstone-California-Canadian Rockies—26 Days.....	61
Yellowstone-California-Grand Canyon—26 Days.....	61

BURLINGTON ESCORTED TOURS

WE'LL SHOW
YOU THE
WEST



VACATIONS
WITHOUT
A CARE

THE NATIONAL PARKS

YELLOWSTONE GLACIER RAINIER
CRATER LAKE YOSEMITE
ROCKY MOUNTAIN GRAND CANYON

COLORADO BLACK HILLS
PACIFIC NORTHWEST
CANADIAN ROCKIES
CALIFORNIA HAWAII ALASKA

SUMMER—1935

ORGANIZED AND OPERATED BY

BURLINGTON ROUTE — GREAT NORTHERN RAILWAY — NORTHERN PACIFIC RAILWAY

J. G. DELAPLAINE, Manager - 547 West Jackson Boulevard - CHICAGO

THE MODERN ROAD TO ROMANCE



"Travel. Go somewhere worth while. Stand before the mighty splendor of far-flung mountains; hear the music of deep forests; share with Nature her secrets of beauty and grandeur; welcome the strange faces and fortunes of distant cities; adventure in new friendships, in new ideas and interesting companions.

This is the modern road to romance.

There is no privilege comparable to intelligent travel. It is the master experience. Travel refreshes the intellect, thrills the heart, gratifies

longing eyes and imparts to life new reasons for living. It hangs a thousand pictures of the living world upon the romantic walls of memory. Its lure is forever fresh, forever romantic, often adventurous beyond our dreams."

TO CLIMB ABOARD a splendid train and cut loose from all the dull duties of the world of work-a-day, to escape for a time from the humdrum routine of yesterday, today and tomorrow, and fare forth on the highroad of adventure "for to see and to admire the wonders of the world so wide" is one of the most joyful and soul-satisfying of experiences.

There is no need nowadays to forego the enjoyment and benefit of travel because one's time is limited to a few brief weeks or even days. Modern methods and practices have affected travel no less than they have enhanced the science of business and the art of housekeeping. There is no need to devote valuable time to mapping out plans, charting your course, looking up costs, studying train schedules, fussing with tickets. Just as a successful business man employs skilled men and women to write his letters, keep his accounts, and experts to offer him counsel, so today's long-distance traveler may look to Burlington Escorted Tours to relieve him or her of all the perplexities, technicalities, and bothersome details

THE MODERN ROAD TO ROMANCE

attending a trip or tour. Vacations are made happy by foresight, harassed by lack of it. Burlington Escorted Tours place travel experience at your disposal.

This booklet treats with plans for a variety of *personally-conducted, all-expense Tours* to and through the western mountain world, involving only the average allowance of vacation time and a total expense that is within average means.

The complete route going out and coming back is definitely established beforehand—in fact everything is arranged in advance; Pullman space, meals and lodging at the best hotels and lodges, railroad transportation, appetizing meals in dining cars, sight-seeing trips by motor. We travel in special Pullmans attached to the best trains each carrying dining car, observation car and thoroughly high class equipment.

Everything is paid for in advance in a lump sum covering all necessary expenses attending strictly first-class travel. A travel expert accompanies each party as business manager to look after everything and relieve guests of all travel details. These are “vacations without a care” on which there is nothing for the guests to do but have a good time, seeing everything in sight, doing everything worth doing, with a carefree group of friends and traveling companions, out for a holiday, imbued with the spirit of adventure, happy in the social atmosphere of a traveling house party.

* * * *

Our escorted tours represent a sound, sensible travel plan that is not an experiment in any sense. You will enjoy yourself—have a good time. You travel without any responsibilities; you see the most in the best way and with no waste of time; and all for a lower total cost than if you made the same trip independently.



Glacier and Yellowstone National Parks

Tour A — 13 Days

A wonderful vacation up in Glacier National Park where the Rockies reach their scenic climax, followed by an exciting (and complete) tour through the Yellowstone geyserland.

Lv Chicago	10.45 PM	Burlington	Sunday
Lv St. Louis	2.15 PM	Burlington	Sunday

The two groups are joined at St. Paul and proceed westward together aboard a crack flyer, the "Empire Builder."

Lv St. Paul	8.50 AM	Great Northern	Monday
Lv Minneapolis	9.25 AM	Great Northern	Monday

Sightseeing today from the car window and observation platform while en route through Minnesota and North Dakota.

Ar Glacier Park	12.40 PM	Great Northern	Tuesday
-----------------------	----------	----------------------	---------

5 THRILLING DAYS IN GLACIER NATIONAL PARK



A band of Indians—war-bonneted Blackfeet in full regalia greet us at the station and we move off in the direction of the Glacier Park Hotel to the accompaniment of tom toms and tribal chants. After luncheon at this great hotel we motor up to Two-Medicine Lake; have a boat ride across to its far end, and a short hike on to Twin Falls. It is an easy, pleasant introduction to the wonders of Glacier Park, and the scenery is magnificent. You will see the Indians again this evening at a ceremonial in the big hotel.

Wednesday morning we go adventuring in a motor car. Over the Blackfeet Highway, 55 miles up to Many-Glacier Hotel and probably the most spectacular mountain scenery you ever saw. All afternoon here with lots to see and do, including a boat ride across Swiftcurrent Lake and up to the head of Josephine Lake for a good view of Grinnell Glacier. No set program for Thursday. Hike all over—with a U. S. ranger if you wish; go fishing in lake or mountain stream; or ride a horse to Iceberg Lake or some other thrilling place.

We motor on Friday morning along the shore of the St. Mary Lakes which are walled up on the far side by a staggering array of bold peaks to Going-to-the-Sun Chalets and a breath-taking tangle of mountain peaks. Hike this afternoon to Baring Falls and Sun Rift Gorge.

An alternative plan today concerns an all-day horseback trip from Many-Glacier to Going-to-the-Sun over thrilling Piegan Pass, extra charge \$3.00 and up according to number in party.

If horseback appeals to you, start away from Many-Glacier Thursday morning; ride over Piegan Pass this day; overnight at Going-to-the-Sun and horseback all day Friday over Gunsight Pass, spending the night high up at Sperry Chalets and down the other side of the Divide Saturday morning, joining the motorists for lunch at Lake McDonald Hotel. An ambitious program, but a thriller almost without counterpart. Extra charge depends on number in party.

A new adventure Saturday, motoring over the amazing new Going-to-the-Sun Highway that tops the Continental Divide at Logan Pass on the way to Lake McDonald Hotel on the west slope of the Rockies, for afternoon and evening.

Lv Belton	10.55 PM	Great Northern	Saturday
Ar Butte	5.55 PM	Great Northern	Sunday
Ar Gardiner	11.00 AM	Northern Pacific	Monday

MAGIC YELLOWSTONE AND THE CODY ROAD



And now for the Yellowstone Wonderland. We motor up the Gardiner Canyon to Mammoth Hot Springs and its myriad tinted terraces—the first of Yellowstone's strange hot water phenomena. This afternoon we get our first view of the Yellowstone geysers at Norris; more fascinating curiosities at Excelsior Basin and on up to Old Faithful, the greatest geyser region in the world. After dinner tonight you'll undoubtedly walk around to see the bears at the nearby feeding ground, and a ranger will be on hand to tell you all about them.

Tuesday morning a U. S. Ranger takes us all over the great geyser basin. You will have seen the illustrious "Old Faithful" erupt several times—every 65 minutes. Motoring this afternoon twice across the Continental Divide along the edge of Yellowstone Lake, pausing at various spots along the way to see strange sights; finally following the Yellowstone River from its source eleven miles down to the Grand Canyon.

Overnight here, and then what a Wednesday. We motor up to Dunraven Pass and on to Tower Falls, then back to the Canyon for lunch, and a full afternoon to explore Yellowstone Canyon and the magnificent Great Fall at as close range as you wish.

Another night here and Thursday morning too, before motoring away for an afternoon of rare sightseeing over the Cody Road which starts at Yellowstone Lake and runs ninety miles over the Absaroka Mountains and down through the narrow six-mile Gorge of the Shoshone River to Buffalo Bill's town of Cody, Wyo.

Lv Cody 7.40 PM Burlington Thursday

Homeward on a famous train, the "North Coast Limited" through eastern Montana and North Dakota—with entertainment by the Sioux Indians while the train waits at Mandan late this morning.

Ar Minneapolis 10.10 PM Northern Pacific Friday
Ar St. Paul 10.45 PM Northern Pacific Friday
Ar Chicago 9.00 AM Burlington Saturday
Ar St. Louis 6.00 PM Saturday

COST OF COMPLETE TOUR

	From CHICAGO		From ST. LOUIS	
	Without Railroad Ticket	With Railroad Ticket	Without Railroad Ticket	With Railroad Ticket
Two persons in a lower berth (each)	\$121.38	\$171.73	\$123.38	\$175.63
One person in a lower berth	134.25	184.60	137.00	189.25
One person in an upper berth	129.10	179.45	131.55	183.80

*Via Lodges through Yellowstone; Via Hotels \$7.00 higher.

ADDITIONAL CHARGES FOR SUPERIOR ACCOMMODATIONS:

Without Bath—Single Room { Via Lodges in Yellowstone and #Hotels in Glacier \$4.50
Via Hotels in Yellowstone and #Glacier \$11.50
With Bath—Via Hotels in both Yellowstone and #Glacier
Double Room (per person) \$17.50
Single Room 22.00

#Chalet accommodations at Going-to-the-Sun.

Rooms with bath are not available at either Going-to-the-Sun Chalets or at the Yellowstone Lodges.

†No meals or Pullman included between Chicago and St. Louis.

Passengers starting at points east of Chicago or St. Louis can calculate the complete cost of the tour by adding the first-class round trip railroad fare from their home station to the figures shown above "Without Railroad Ticket."

TOURS LEAVE CHICAGO AND ST. LOUIS

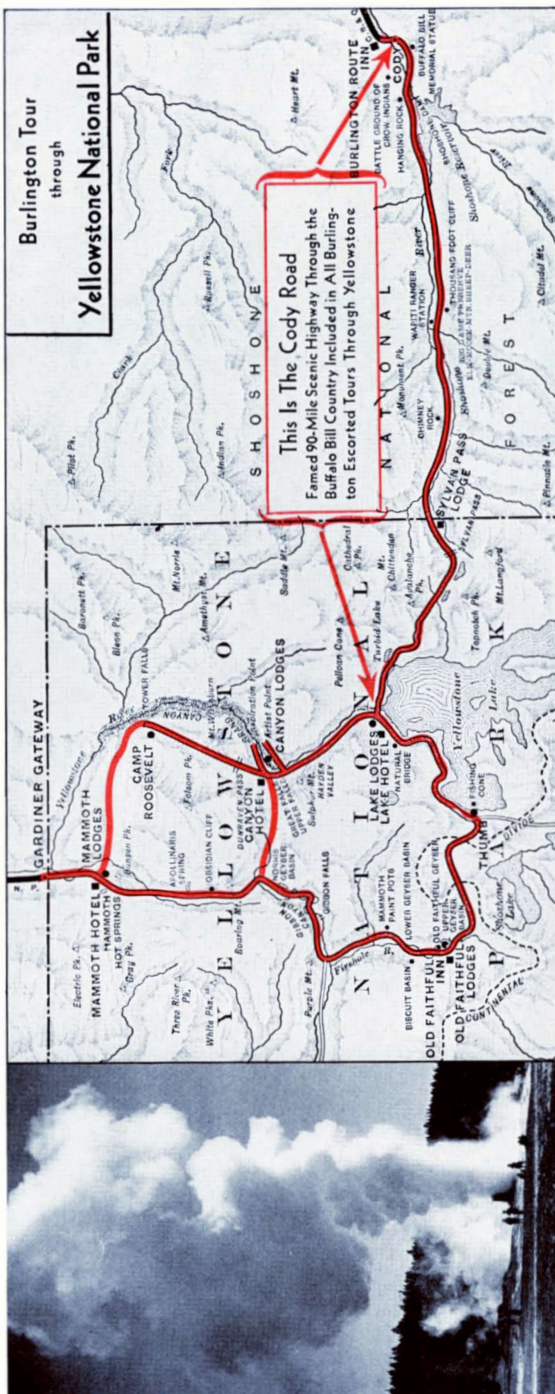
Tour A-1 June 23
Tour A-2 June 30
Tour A-3 July 7

Tour A-4 July 14
Tour A-5 July 21
Tour A-6 July 28

Tour A-7 August 4
Tour A-8 August 11
Tour A-9 August 18

**Burlington Tour
through
Yellowstone National Park**

This Is The Cody Road
Famed 90-Mile Scenic Highway Through the
Buffalo Bill Country Included in All Burling-
ton Escorted Tours Through Yellowstone



« « MAGIC YELLOWSTONE » »

It is hard to avoid envying that mortal who stands for the first time fifty yards away from a certain unimpressive limestone cone . . . half expectantly and half skeptically "waiting for something to happen."

What a privilege is his. What a mighty thrill when, after a few preliminary hisses and sputters, the impossible happens and a million gallons of white-hot water bursts furiously forth in a roaring jet that mounts higher and higher until it reaches 150 feet as Old Faithful, headliner of the Yellowstone circus . . . pampered pet of geyserdom, performs again its spectacular stunt . . . "on time" to the split second . . . clocking off the 65-minute interval today, as it did yesterday, and a thousand years ago.

You will hear all kinds of explanations to account for the geysers and the other queer, crazy phenomena which mark Yellowstone National Park as a place apart from all other earthly areas. But none of the explanations sound very convincing. The theory that sounds plausible as to the Old Faithful type does not account satisfactorily for the hundreds of lesser geysers that erupt incessantly; nor for the interminable plop-plopping of the multi-colored "paint pots" whose mushy surfaces are agitated by countless tiny steam explosions. What makes the "Black Growler" growl? Here is a lovely pool whose water looks blue, while over there is one that looks decidedly green. Here is a spring of boiling hot water and only inches away from it a spring that is ice cold. What causes that? Try to figure out the technicalities of the famed Fishing Cone, Biscuit Basin, the pink steam rising from Amethyst Pool . . . then give it all up and devote yourself to sheer admiration of the consummate artistry with which Nature, working with hot lime-bearing water and a microscopic plant life organism known as algae, built up the delicately fluted and marvelously tinted terraces which cover many acres in the vicinity of Mammoth Hot Springs.

Finally go and stand at the edge of the Grand Canyon of the Yellowstone and see a sight that taxes your visual capacity. Try to comprehend this grotesque, colossal masterpiece which the educated waters of this strange land have wrought as if to show mere man what it can do when it quits playing entertaining tricks and really gets down to business. Here is scenic splendor. Here is color strewn about and spilled down a thousand-foot escarpment in the most extravagant use of yellow that is to be found anywhere in nature. The Yellowstone Canyon is half a mile wide, more than 15 miles long and 1200 feet deep in many places. At its head is the majestic Great Fall of the Yellowstone . . . a mighty, snow-white cascade that plunges over a heroic precipice as WATER with a final flourish adds the perfect touch to complete one of the earth's sublimest spectacles.

ACCOMMODATIONS IN YELLOWSTONE

There are two types of accommodations in Yellowstone Park—lodges and hotels. The lodges are miniature villages of rustic buildings embracing community recreation halls, dining rooms where all have meals family style, post office, etc.—surrounded by the groups of lodges (without bath) which are the sleeping quarters. Here one can have all

the enjoyment of camp life without any of its usual discomforts. There is special entertainment at the lodges every evening including impromptu features by guests.

The hotels are great hostelries, modern in appointments and attractive as to architecture. Dancing every evening except Sunday, at both lodges and hotels.

Yellowstone and Rocky Mountain National Parks and the Royal Gorge

Tour B — 12 Days

The "white magic" of Yellowstone; the spectacular Cody Road through the Buffalo Bill Country; motoring through Rocky Mountain National Park; and seeing the Colorado Rockies from Glenwood Springs to Pikes Peak.

Lv Chicago	10.30 PM	Burlington	Saturday
Lv St. Louis on any convenient train joining the tour at Chicago			
Lv St. Paul	8.35 AM	Northern Pacific	Sunday
Lv Minneapolis	9.10 AM	Northern Pacific	Sunday
En route on the North Coast Limited across Minnesota and North Dakota.			
Ar Gardiner	11.00 AM	Northern Pacific	Monday

YELLOWSTONE AND ITS WHITE MAGIC



Here we transfer to motor cars and immediately enter Yellowstone National Park. First stop is at Mammoth Hot Springs where we begin to see why they call it "Wonderland." For here are acres of hot springs spilling over beautifully tinted rock terraces which have been built up through the centuries by the mineral content of the boiling waters. We see and enjoy all this before motoring on to the wonders of the Norris Geyser Basin, and then to the other geysers. You will see them, large and small, erupting at intervals all about. After dinner you'll walk over to the place where the bears are fed, and enjoy the "bear talk" by a park ranger.

Next morning, Tuesday, a ranger takes us for a hike to see more geysers; pools of water that boil like witches' cauldrons, and all kinds of engaging things. In the afternoon we motor over to the Grand Canyon stopping to see Kepler Cascade, the Fishing Cone, the weird paint pots, and the mud geyser.

Motoring again Wednesday morning over Dunraven Pass to Tower Falls and back, with an afternoon afoot to explore the spectacular wonders of the vividly colored Yellowstone Canyon and its majestic Great Fall that is double the height of Niagara.

We have Thursday morning also for sight-seeing at this wonderful place, and leave after lunch, motoring eleven miles up along the Yellowstone River and ninety more miles over the thrilling Cody Road which crosses the Absaroka Range through Sylvan Pass, winds down through the dude ranch country and plunges through the tortuous six-mile gorge of the Shoshone River to end at the illustrious little frontier town of Cody, Wyoming where we stay overnight at the Cody Inn, an interesting place.

Lv Cody	7.25 AM	Burlington	Friday
Stops made at Thermopolis, where the vari-colored Terraces outrival Yellowstone's, and in the Wind River Canyon.			
Ar Loveland	7.00 AM	Colo. & Southern	Saturday

ROCKY MOUNTAIN NATIONAL PARK

And now for two days of adventure in Rocky Mountain National Park. Up we wheel in motor cars through the 16-mile Canyon of the Big Thompson River to the village of Estes Park walled all around by towering peaks of the Colorado Rockies. We stay overnight at the Estes Park Chalets, and you'll like it. Horses here if you want to ride; hiking as far and as high as you want to go; magnificent scenery on every hand.



Motoring again Sunday morning, over the great new Trail Ridge Highway that tops the backbone of the Continent at Fall River Pass on the way to Grand Lake Lodge for luncheon.

Several hours at this primeval place before motoring down to Granby to board a westbound Rio Grande train.

HEART OF THE ROCKIES

Along the Colorado River; through Red Canyon and over America's newest railroad link—the famous Dotsero Cut-off—to Glenwood Springs for overnight at the famous Colorado Hotel.

Monday early risers may have a bracing dip in the immense open-air pool of hot mineral water before boarding an eastbound Rio Grande train for a wonderful daylight ride through the heart of the Colorado Rockies. We climb up the West slope of the Continental Divide and go over the top at Tennessee Pass; coast down the East slope and wind through the Canyon of the Arkansas River.

ROYAL GORGE - PIKES PEAK

Finally we reach the colossal Royal Gorge where the train waits while we go sight-seeing briefly at the very narrowest point of the breathtaking abyss.

We reach Colorado Springs in time for dinner at the Broadmoor . . . spend the night at this palatial hotel.

All day Tuesday crowded with the thrills of the Garden of the Gods; the Seven Falls; motoring to the top of Pikes Peak and again to the top of Cheyenne Mountain.

Lv Colorado Springs 6.45 PM D.& R.G.W. Tuesday
Ar Denver 9.00 PM D.& R.G.W. Tuesday

We go to the Cosmopolitan Hotel for the night, and on Wednesday motor all around Denver, seeing its fine parks, business and residential sections, the Capitol, U. S. Mint, Civic Center.

Late in the afternoon we board the crack Burlington ARISTOCRAT . . . wave goodbye to the Rockies which we have crossed over three times.

Lv Denver 5.00 PM Burlington Wednesday
Ar Omaha 6.50 AM Bu.lington Thursday
Ar Chicago 7.15 PM Burlington Thursday
Ar St. Louis 5.45 PM Burlington Thursday

COST OF COMPLETE TOUR

	From CHICAGO		#From ST. LOUIS	
	Without Railroad Ticket	With Railroad Ticket	Without Railroad Ticket	With Railroad Ticket
Including all necessary expenses such as Pullman, *lodging (two persons to a room without bath), all meals, and auto trips as shown in itinerary.				
Two persons in a lower berth (each)	\$137.43	\$184.38	\$136.05	\$184.90
One person in a lower berth	147.80	194.75	146.30	195.15
One person in an upper berth	143.65	190.60	142.20	191.05

*Via Lodges through Yellowstone; Via Hotels \$7.00 higher.

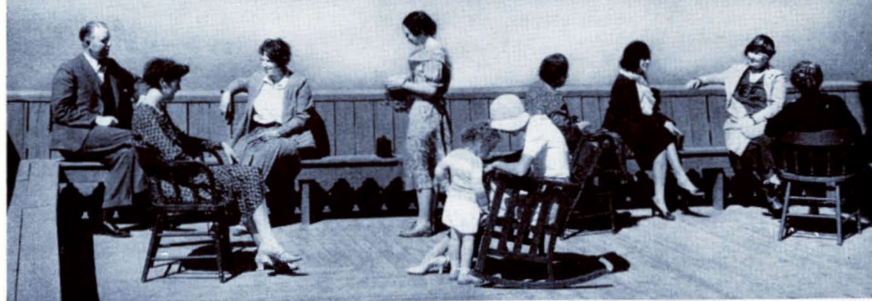
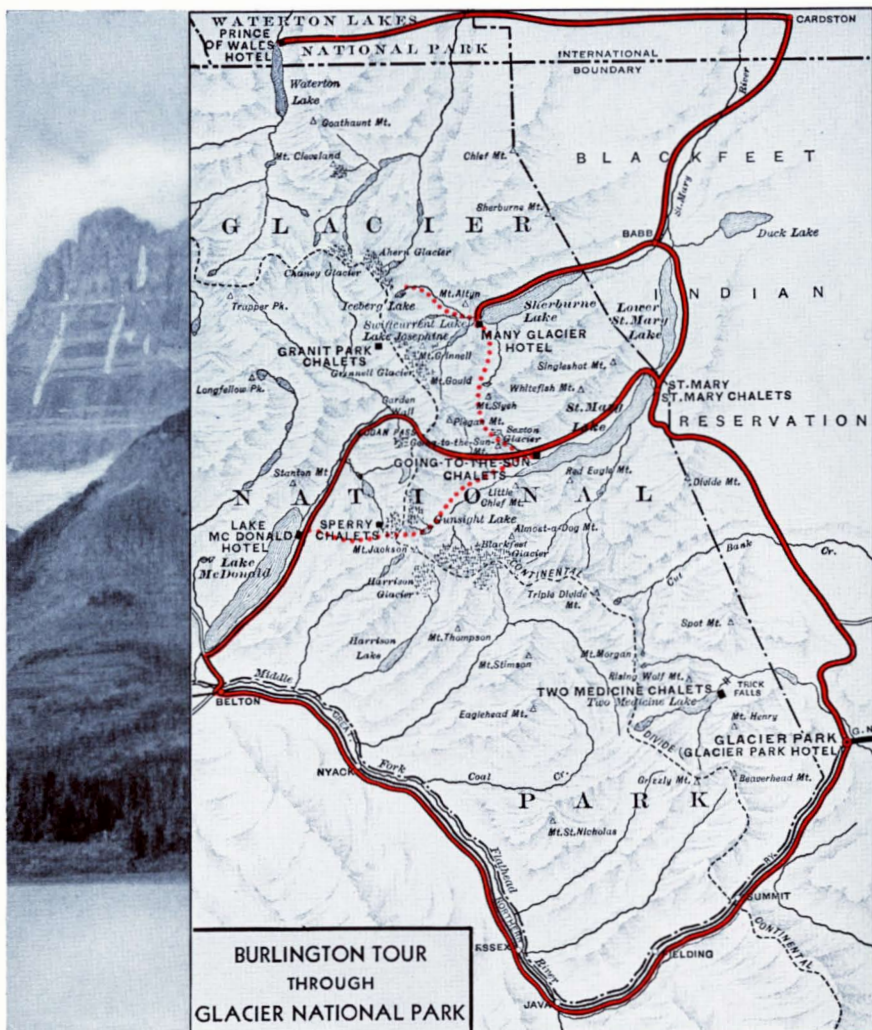
EXTRA CHARGES AT HOTELS: Single Room without bath \$12.00; Double Room with bath (per person) \$15.00; Single Room with bath \$18.00.

#No meals or Pullman included between St. Louis and Chicago.

The costs shown above "without rail ticket" are for the benefit of passengers coming from the East or South with through rail tickets.

TOURS LEAVE CHICAGO AND ST. LOUIS

Tour B-1 June 29	Tour B-4 July 20	Tour B-7 August 10
Tour B-2 July 6	Tour B-5 July 27	Tour B-8 August 17
Tour B-3 July 13	Tour B-6 August 3	



« « GLACIER NATIONAL PARK » »

Within the 1,500 square miles of Glacier National Park is crowded an array of mountain scenery amazingly beautiful and spectacular beyond words. It is sharply different from any other mountain scenery or any other national park in America, and in ruggedness and sheer grandeur, Glacier probably surpasses the Alps.

It is a mighty turmoil of monster peaks, tremendous gulfs and enormous hollowed cirques; with scores of living glaciers, innumerable lakes of unbelievable charm, roaring rivers of icy water and plunging torrents; with magnificent rock colorings varying from pastel shades of light blue to the deepest purple, from brilliant reds to the faintest rose; and over it all the vast eternal silence of the Rockies.

Through Glacier extends the main range of the Rockies, the Continental Divide cutting the park into halves. Within the park there are 83 named mountains having an altitude of from 7,000 to 10,000 feet, and four exceeding 10,000 feet. From the summit of Swiftcurrent Mountain can be counted over 40 of these majestic peaks from one viewpoint!

There are no foothills. The mountains rise with amazing abruptness from the level floor of valley or shore of lake. You are *close* to them. You can, in a manner of speaking, walk up and touch the side of a mountain which rises like the sheer wall of an edifice.

One of Glacier Park's outstanding attractions is, of course, the glaciers after which the park is named. They cling by scores to the rugged mountain sides. In all, there are some three score of these fascinating remnants of the great ice sheets that millions of years ago shaped Glacier Park for tourists today. Upon them one may snowball in midsummer. In June and July wild flowers in profusion fringe their edges.

Next to the glaciers, perhaps, the lakes are the most popular feature of the park. There is an amazing variety and number of them. The United States Geological Survey has mapped more than 250 and many have not yet been named. Chief among these mountain waters are Lake St. Mary, about a mile above sea level, and Lake McDonald. Both are long, narrow and very deep, with mountains rising sheer from their shores. You may cruise them in comfortable launches. Of all the beautiful smaller lakes which lie scattered like gems among the peaks, Iceberg Lake is the most unusual and interesting. Iceberg Glacier projects into its clear waters and, during the summer, hundreds of miniature icebergs float upon its turquoise surface. Flowers and foliage grow along its shores.

Come out to Glacier this summer. Stand before the mighty splendor of far-flung mountains. Hear the music of deep forests. Share with Nature her secrets of beauty and grandeur up here where your enjoyment of scenic splendor is limited only by your capacity to comprehend.



*Yellowstone's illustrious log hotel—Old Faithful Inn
 Worth a trip to Yellowstone to see the wonderful Canyon Hotel lounge
 The colorful Yellowstone Canyon and its majestic waterfall*



© HAYNES

« « THE CODY ROAD » »

All Burlington Escorted Tours thru Yellowstone include the Cody Road—jamea 90-mile scenic motor highway through the Buffalo Bill country.

If you know anything about the topography of the region that lies just east of the National Park, you know that it is one of the wildest, least known and scarcely explored mountain areas in America. The far-flung Absaroka Range walls-up the entire east side of Yellowstone from its northernmost corner to the southernmost and yet farther south for many a mile, and the Cody Road is the way across . . . and the only way across, save for some foot trails that would puzzle a mountain goat.

It penetrates wild country . . . the raw wilderness "as it was in the beginning," as may be understood from the fact that neither does any other highway cross the Cody Road in all the ninety miles from Yellowstone Lake to Cody. There is not a town, village or settlement of any sort in its entire length except for 15 or 20 of those famous vacation places known as "dude ranches." Old maps and records show that it follows the self-same route taken by the great explorer, John Colter, in making his adventurous way back to civilization following his discovery of Yellowstone.

In 40 years of cutting and grading through the endless forest, and hacking away at mountain sides, man carved the road up the west slope of the Absaroka Range, engineered it over the top through Sylvan Pass and got it down the "other side" by means of a hill seven miles long, and an amazing series of curves, loops, twists . . . to the edge of the Shoshone River.

Then thirty miles of wonder way through the heart of the Shoshone National Forest, sanctuary of the furred and feathered tribes . . . famed big-game country; and a dozen miles more following every twist and turn of the fast-flowing Shoshone River through a broad valley flanked by towering bare cliffs in whose curiously eroded crests we see fantastic configurations silhouetted against the sky—an elephant's head, the palm of a hand, a dog, an anvil and scores more—a strange country, unlike anything to be seen elsewhere.

An army of U. S. engineers put the road through the grim Shoshone Canyon on a six-mile shelf dynamited out of the sheer rock wall of Rattlesnake Mountain in connection with the building of the giant Shoshone Irrigation Dam.

The Cody Road completes 100% of the possibilities of any Yellowstone Tour. If you don't see the Cody Road, you don't see Yellowstone Park.

Yellowstone and Glacier National Parks

Tour C — 12 Days

Lv Chicago	10.30 PM	Burlington	Tuesday
Lv St. Louis on any convenient train, joining the tour at Chicago.			
Lv St. Paul	8.35 AM	Northern Pacific	Wednesday
Lv Minneapolis	9.10 AM	Northern Pacific	Wednesday

En route today through Minnesota and North Dakota with a Sioux Indian pow wow at Mandan to enliven the afternoon.

Ar Gardiner	11.00 AM	Northern Pacific	Thursday
-------------	----------	------------------	----------

SEEING THE MAGIC WONDERS OF YELLOWSTONE

We step from the train into waiting motor cars and the Yellowstone Tour begins at once. Within an hour you will be exploring the first of Yellowstone's endless phenomena—the hundreds of springs and pools of water both hot and cold that trickle over the fantastically carved lime formations which have made Mammoth Hot Springs famous the world over.

Later we motor past the Hoodoos, Apollinaris Spring, Obsidian Cliff, Roaring Mountain, through the Norris Geyser Basin; down the Gibbon River and up the Firehole River to the Upper Geyser Basin, the home of the great "Old Faithful," and scores of other curious hot water manifestations. Of course everybody stands by for a first view of Old Faithful's eruption, bound to occur within the hour. Here too you'll see your first Yellowstone bears which are as much a part of this National Park as the geysers.

On Friday morning we make a splendid hike all around this region, in charge of a U. S. ranger who is a mine of information about this strangest of earthly regions. In the afternoon we have a long and beautiful motor ride, twice over the Continental Divide, for many miles along the shore of Yellowstone Lake, stopping every little while at points of special interest; coming finally to the most spectacular dual attraction in the Park, the Yellowstone Canyon and the tremendous Great Fall.

Saturday starts with a motor side trip to Dunraven Pass and Tower Falls and then back to the Grand Canyon to revel all afternoon in the scenic marvels of the colossal, colorful Grand Canyon.

More sight-seeing Sunday morning in this region of endless possibilities with an afternoon devoted to a thrilling motor ride over the famous Cody Road that starts at Yellowstone Lake and ends at Cody, Wyo.—ninety miles, over the Absaroka Range at Sylvan Pass, across the dude ranch region, and down through the breath-taking six-mile gorge of the Shoshone River.

Lv Cody	7.40 PM	Burlington	Sunday
Ar Glacier Park	12.40 PM	Great Northern	Monday

WHERE THE ROCKIES REACH THEIR SCENIC CLIMAX

And here is another National Park and a whole new world. Blackfeet Indians in full tribal regalia greet us at the Glacier Park station. The afternoon program includes a motor trip to Two-Medicine Lake with a launch ride and short hike to Twin Falls. We hobnob with the war-bonnetted braves again tonight during a ceremonial in the wonderful Glacier Park Hotel.

Motoring Tuesday morning over the Blackfeet Highway, over the Hudson Bay Divide, and along the Sherburne Lakes up to Many Glacier Hotel situated amid alpine grandeur that defies description. We spend two days up here where the Rockies reach their scenic climax. On the program is a boat ride across Swiftcurrent Lake and up to the head of Josephine Lake for an excellent view of the great icefield which is Grinnell Glacier.

Wednesday presents an opportunity for your choice of activities. Here is a good place to go fishing. The possibilities for mountain climbing are almost without parallel on this continent. Or perhaps you'd like to hire a horse and ride to one of Nature's curiosities, Iceberg Lake.

By motor on Thursday morning to Going-to-the-Sun Chalets on lovely St. Mary Lake. Talk about mountains! Here they are. Wherever you look you see the big sharp peaks, so close at hand you almost could reach out and touch them. Here of course is the famous Going-to-the-Sun Mountain which is sacred in the legends of the Blackfeet. Time for a good long hike this afternoon.

The horseback enthusiasts (and they all come to Glacier Park sooner or later) can leave Many Glacier Hotel Wednesday morning; ride over Piegan Pass to the "Sun Camp" the first day, and over Gunsight Pass (this is a thriller) across the continental divide Thursday; overnight at the group of chalets at the foot of Sperry Glacier, wind down the mountain Friday morning to join the motorists at Lake McDonald Hotel. The extra cost of this two-day horseback trip including guide service, depends on the number in party.

Those who prefer can go by horseback from Many Glacier Hotel to Going-to-the-Sun Chalets over Piegan Pass on Thursday, an all-day trail trip that discloses some of the wildest mountain scenery to be found anywhere. The extra cost is \$3.00 and up according to the number of persons making up the party.

Friday we motor over the wonderful new Going-to-the-Sun Highway which, through a miracle in road-building, negotiates Logan Pass on the way to Lake McDonald Hotel over on the west slope of the Rockies. After luncheon the party motors down to Belton to board the Empire Builder for the east.

Lv Belton	4.45 PM	Great Northern	Friday
Homeward bound through the Dakota wheat country and Minnesota.			
Ar Minneapolis	10.10 PM	Great Northern	Friday
Ar St. Paul	10.30 PM	Great Northern	Saturday
Ar Chicago	8.45 AM	Burlington	Sunday
Ar St. Louis	6.00 PM	Sunday

COST OF COMPLETE TOUR

Including all necessary expenses such as Pullman, *lodging (two persons to a room without bath), all meals, and auto trips as shown in itinerary.	From CHICAGO		†From ST. LOUIS	
	Without Railroad Ticket	With Railroad Ticket	Without Railroad Ticket	With Railroad Ticket
Two persons in a lower berth (each)	\$117.75	\$168.10	\$117.75	\$170.00
One person in a lower berth	130.00	180.35	130.00	182.25
One person in an upper berth	125.10	175.45	125.10	177.35

*Via Lodges through Yellowstone; Via Hotels \$7.00 higher.

ADDITIONAL CHARGES FOR SUPERIOR ACCOMMODATIONS:

Without Bath—Single Room	{ Via Hotels in #Glacier and Lodges in Yellowstone \$ 4.50 Via Hotels in #Glacier and Hotels in Yellowstone 11.50
With Bath—Via Hotels in both #Glacier and Yellowstone:	
Double Room (per person)	\$17.50
Single Room	22.00

#Chalet accommodations at Going-to-the-Sun.

Rooms with bath are not available at either Going-to-the-Sun Chalets or at the Yellowstone Lodges.

†No meals or Pullman included between St. Louis and Chicago.

The costs shown above "without rail ticket" are for the benefit of passengers coming from the East or South with through rail tickets.

TOURS LEAVE CHICAGO AND ST. LOUIS

Tour C-1 June 25	Tour C-4 July 16	Tour C-7 August 6
Tour C-2 July 2	Tour C-5 July 23	Tour C-8 August 13
Tour C-3 July 9	Tour C-6 July 30	Tour C-9 August 20

Yellowstone Park and Colorado

Tour D — 10 Days

Four adventurous days in Magic Yellowstone—entering at Gardiner and leaving via Cody. A thrilling day motoring over the Cody Road. . . Estes Park . . . Denver. . . Colorado Springs.

Lv Chicago	10.30 PM	Burlington	Sunday
Lv St. Louis	2.15 PM	Burlington	Sunday

The two groups are joined at St. Paul and travel westward together on the famous "North Coast Limited."

Lv St. Paul	8.35 AM	Northern Pacific	Monday
Lv Minneapolis	9.10 AM	Northern Pacific	Monday

Sight-seeing today from the car window as the train speeds across Minnesota and North Dakota. During a brief stop-over at Mandan, N. D. we shall be entertained by a party of Sioux Indians.

Ar Gardiner	11.00 AM	Northern Pacific	Tuesday
-----------------------	----------	----------------------------	---------

A WONDERFUL TOUR THROUGH GEYSERLAND



Motor cars await our arrival and we immediately enter Yellowstone National Park whose wonders are disclosed within the hour. We are likely to see some antelope on the way up to Mammoth Hot Springs where we spend an hour or two in exploring the incomparable terraces which give this region its name.

In the afternoon we motor up through the Golden Gate; stopping at various points of interest including the seething Norris Geyser Basin; and on up the Fire-hole River to the Upper Geyser Basin where the illustrious "Old Faithful" and scores of other large and small gushers present one of the strangest sights to be found anywhere in Nature.

This evening we enjoy strolling around to the feeding grounds to get acquainted with the Yellowstone bears. They are not tame bears by any means. But they know when it's supper time and come lumbering in out of the woods—sometimes as many as 30 altogether—brown bears, black bears, grizzlies, cubs and all.

Wednesday morning we devote to exploring the great Geyser Basin accompanied by a U. S. ranger who explains things as we go along—a very eventful, instructive and worthwhile morning.

Afternoon brings a delightful motor ride—two times over the Continental Divide, along the shore of Yellowstone Lake, stop-overs all along the route to see fascinating, incredible sights.

We have a fine evening at the Grand Canyon and the next morning just as fine a motor experience riding over the shoulder of Mt. Washburn, through Dunraven Pass and up to Tower Falls, then back to the Canyon for a never-to-be-forgotten afternoon of sight-seeing at this tremendous, colorful abyss. You walk all around everywhere; viewing the Majestic Great Fall of the Yellowstone from far and near; clambering around in the Canyon to your heart's content.

More of this Friday morning; and then along come our motor cars to carry us back up the Yellowstone River to its source at the big lake; over the famed "Fishing Bridge" and out upon the Cody Road for the supreme sight-seeing thrill of the entire Yellowstone Tour. Up and up—over the Absaroka Range through grim Sylvan Pass; through the Shoshone National Forest; the dude ranch country; the breath-taking six-mile gorge of the Shoshone River; and so to Cody, Wyoming at the edge of the plains for overnight at the Cody Inn.

Lv Cody..... 7.25 AM Burlington.....Saturday

Down through central Wyoming with a special stop-over at Thermopolis Hot Springs and the Wind River Canyon; on down to Casper and the Teapot Dome oil fields.

Ar Loveland..... 7.00 AM Colorado & Southern.....Sunday

ESTES PARK AND THE PIKES PEAK REGION

Here we leave the train and take to the balloon tires, motoring up over the road that winds tortuously through the 16-mile Big Thompson Canyon to Estes Park amid the towering peaks of the main range of the Colorado Rockies.

An all-day opportunity here to indulge your taste for mountaineering. Hike as far and as high as you care to leg it. Hire a horse and enjoy hours of trail riding. Feast your eyes upon some of the most beautiful mountain vistas in America. Overnight at the fine, big and interesting Estes Park Chalets.

Monday morning we motor down through the North St. Vrain Canyon to Denver for luncheon, and then continue by automobile to Colorado Springs for a fine sightseeing tour including the Garden of the Gods, Seven Falls, and South Cheyenne Canyon—ending up at the wonderful Broadmoor Hotel for dinner and overnight.

Tuesday—Pikes Peak Day. By motor we scale America's most illustrious mountain to its topmost top for a thrilling panorama of the Rockies for 100 miles around. We motor back to Denver this afternoon in time to catch the famed Burlington ARISTOCRAT.

Lv Denver..... 5.00 PM Burlington Route.....Tuesday
Ar Omaha..... 6.50 AM Burlington Route.....Wednesday
Ar St. Louis..... 5.45 PM Burlington Route.....Wednesday
Ar Chicago..... 7.15 PM Burlington Route.....Wednesday

COST OF COMPLETE TOUR

Including all necessary expenses such as Pullman, *lodging (two persons to a room without bath), all meals, and auto trips as shown in itinerary.	From CHICAGO		From ST. LOUIS	
	Without Railroad Ticket	With Railroad Ticket	Without Railroad Ticket	With Railroad Ticket
Two persons in a lower berth (each).....	\$ 99.28	\$146.23	\$ 99.15	\$148.00
One person in a lower berth.....	109.65	156.60	109.15	158.00
One person in an upper berth.....	105.50	152.45	105.15	154.00

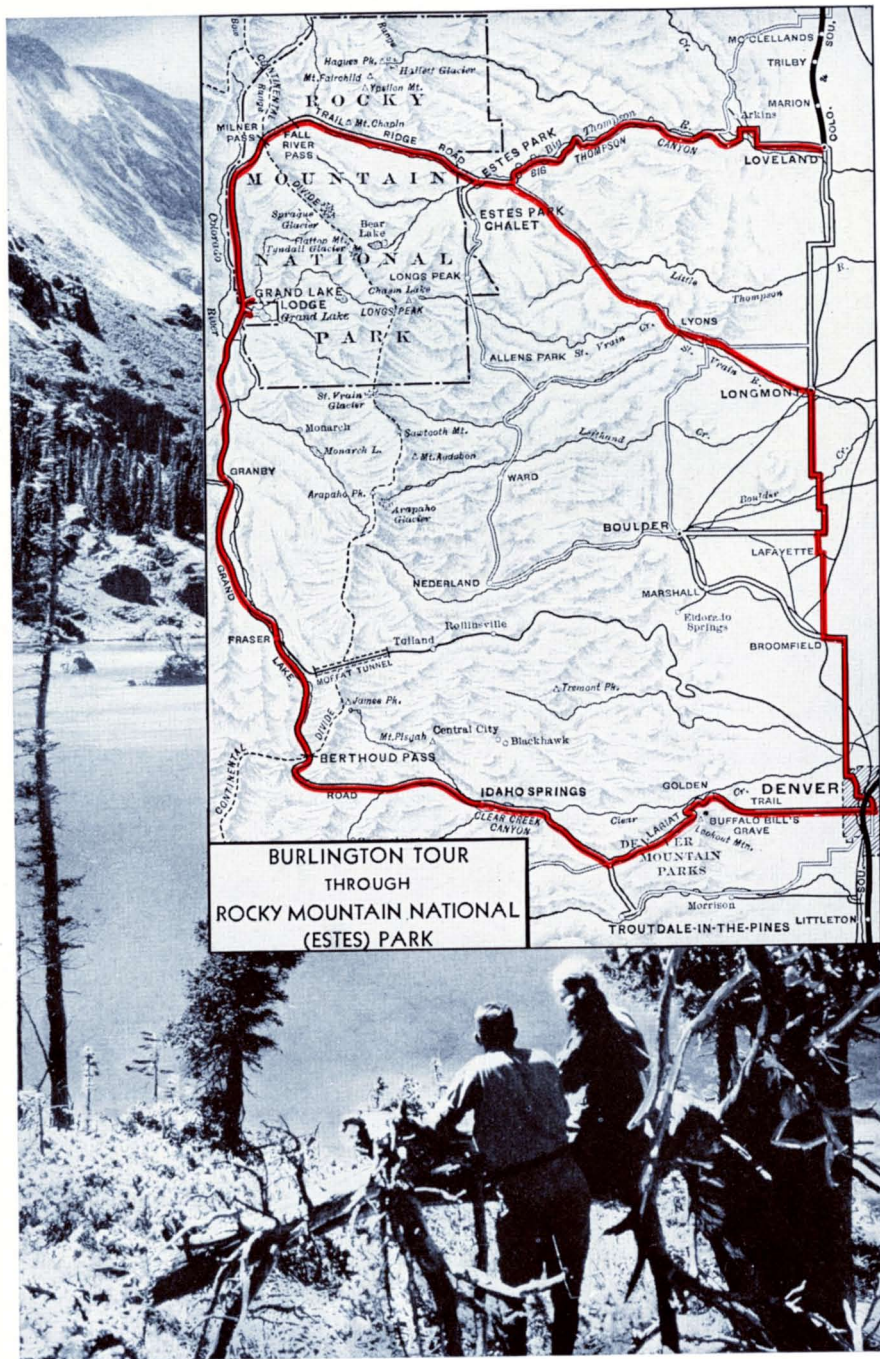
*Via Lodges through Yellowstone; Via Hotels \$7.00 higher

EXTRA CHARGES AT HOTELS: Single Room without bath \$11.00; Double Room with bath (per person) \$11.00; Single Room with bath \$15.00.

The costs shown above "without rail ticket" are for the benefit of passengers coming from the East or South with through rail tickets.

TOURS LEAVE CHICAGO AND ST. LOUIS

Tour D-1 June 16	Tour D-5 July 14	Tour D-9 August 11
Tour D-2 June 23	Tour D-6 July 21	Tour D-10 August 18
Tour D-3 June 30	Tour D-7 July 28	Tour D-11 August 25
Tour D-4 July 7	Tour D-8 August 4	Tour D-12 Sept. 1



Rocky Mountain National Park



It would be hard to over-state the scenic significance of this famous mountain playground . . . impossible to over-estimate the mighty splendor of the far-flung mountains over and through which you wheel in balloon-tire luxury.

Leaving Loveland in the morning we spin along at 35 to 40, the great Front Range of the Rockies looming up ahead, growing higher and vastly higher every minute. A brief time "roller coasting" up and down over the foothills brings us to the Big Thompson River whose crooked course we follow through a 16-mile canyon that ends in a broad, bowl-shaped valley thoroughly hemmed-in by a mountain skyline dominated by the

14,255-foot crown of Longs Peak. We roll up to the Estes Park Chalets where the question about the quality of accommodations which this mountain country offers is answered in a way which leaves you joyfully satisfied for all time. Pleasant sleeping rooms are tastefully furnished, the lounge room of baronial spaciousness and bright with color is made inviting by a fireplace of heroic size; a genial atmosphere of open cordiality pervades the place.

The next part of our route is over the new Trail Ridge Road . . . a splendid boulevard recently opened to traffic, which climbs up the east slope of the Continental Divide to Fall River Pass with magnificent vistas of the valley below and thrilling views of many a snow-crowned peak constantly before your eyes. Mountain panoramas of the first order of sublimity, including the beautiful Never-Summer Range, the Medicine Bow Range, majestic cloud-crowned Longs Peak and the grand southward sweep of the Rockies as far as Pikes Peak . . . a parade of snow-capped giants fading into the hazy beyond . . . contribute their beauty and inspiration.

From this point the road makes a rapid, winding descent to the Colorado River, which here flows through a wooded canyon walled-in by towering peaks, and, following the picturesque bends in the stream, shortly pulls up at Grand Lake, the largest body of water in Colorado, and the scene of an annual regatta featured by a sailing race for a Lipton Cup.

Here we find a miniature village of snug little cabins surrounding a big main lodge of attractive design and excellent appointments.

As to Tour B our visit here is limited to luncheon and an afternoon following which we motor down through the upland meadows to Granby to catch the train over to Glenwood Springs (See Pages 8-9).



Many-Glacier Hotel in the heart of the mountain world
GLACIER NATIONAL PARK
St. Mary Lake and the famed Going-to-the-Sun Chalets

Glacier Park and Canadian Rockies

Tour E — 13 Days

Four days amid the alpine grandeur of Glacier National Park, and then five more days motoring and sight-seeing among the skyscraping peaks of the Canadian Rockies.

Lv Chicago	10.45 PM	Burlington.....	Sunday
Lv St. Louis.....	2.15 PM	Burlington.....	Sunday
Lv St. Paul.....	8.50 AM	Great Northern.....	Monday
Lv Minneapolis.....	9.25 AM	Great Northern.....	Monday

And a fast ride to Glacier Park aboard the famous "Empire Builder" where a real welcome is extended by a band of Blackfeet Indians.

Ar Belton.....	2.35 PM	Great Northern.....	Tuesday
----------------	---------	---------------------	---------

THE WILDEST CONFUSION OF MOUNTAIN GRANDEUR



A fleet of motor cars meets us here and we wheel along the lake shore up to Lake McDonald Hotel for overnight.

After breakfast Wednesday we motor over the thrilling Going-to-the-Sun Highway, newest of all mountain motor roads and perhaps the most spectacular from a scenic standpoint. It takes us over Logan Pass, where, a little while ago, it was considered impossible to build a highway, to Going-to-the-Sun Chalets located in the heart of a wild confusion of towering peaks.

Here we have luncheon, and in the early afternoon continue our ride along the shore of the St. Mary Lakes and Sherburne Lake through constantly changing scenes up to the Many-Glacier Hotel on Swiftcurrent Lake—a whole new wilderness mountain world. Tonight, all day tomorrow and again overnight in this amazing confusion of mountain magnificence which

outrivals the Alps. On our program while here, is a cruise across Swiftcurrent Lake and on up to the end of Josephine Lake for a splendid view of glistening Grinnell Glacier.

Friday begins another phase of our adventure, motoring north we cross the border into Canada, then enter Waterton Lakes Park, with a brief stop for luncheon. Away again this afternoon through the grain region that has made Alberta famous, reaching Blairmore for overnight at the Greenhill Hotel.

FIVE GLORIOUS DAYS IN THE CANADIAN ROCKIES

And now for some exploring. Saturday morning we continue by motor, past and over the "Frank Slide" where a mountain split in two and buried a town, through Crows Nest Pass, then following the Elk River to Cranbrook for luncheon. The afternoon brings a different territory. We follow a broad valley along the Kootenay River and Columbia Lake, with the Rockies to the East and the towering Selkirks to the West.

Tonight we are at Radium Bungalow Camp in Sinclair Canyon, an interesting spot, comfortable accommodations and plenty to see and to do. Particularly a plunge in the hot radium water pool—varying in temperature from 75° to 110°.

Sunday morning, and away again, along the Columbia River to Golden for lunch, then eastward through the tangle of the Canadian Rockies to Emerald Lake, hemmed in all around by skyscraping mountains. Motoring again all afternoon through the Kicking Horse Canyon and up to Yoho Valley for a glimpse of lovely Yoho Glacier and Takakkaw Falls, then on to Lake Louise—its stately Chateau, lovely Lake with Victoria Glacier at its head. Why try to describe it?

Suffice to say we have almost two days here, with the time your own, hike, ride where you will, boat, swim, fish or just sit on the veranda absorbing the beauty on all sides.

Tuesday, after luncheon we continue on to another spot, in its way, beautiful and interesting, Banff, remaining overnight in the incomparable Banff Springs Hotel.



All day Wednesday at this famous resort which offers so many inviting possibilities for hiking, swimming, playing golf, and horseback.

Lv Banff. 10.30 PM Canadian Pacific. . . . Wednesday
Ar Winnipeg. . . . 8.25 AM Canadian Pacific. . . . Friday

Morning trip around Winnipeg, visiting the Parks and residential sections. Afternoon open for shopping in the big metropolis of the north.

Lv Winnipeg. . . . 6.00 PM Great Northern. . . . Friday
Ar Minneapolis. . . 7.30 AM Great Northern. . . . Saturday
Ar St. Paul. 8.00 AM Great Northern. . . . Saturday

For 300 miles along the scenic Mississippi.

Ar Chicago. 7.10 PM Burlington. Saturday
Ar St. Louis. 7.40 AM Sunday

COST OF COMPLETE TOUR

	From CHICAGO		#From ST. LOUIS	
	Without Railroad Ticket	With Railroad Ticket	Without Railroad Ticket	With Railroad Ticket
Including all necessary expenses such as Pullman, lodging (two persons to a room), all meals, and auto trips as shown in itinerary.				
Two persons in a lower berth (each)	\$157.13	\$207.98	\$158.88	\$213.48
One person in a lower berth.	168.75	219.60	171.00	225.60
One person in an upper berth.	164.10	214.95	166.15	220.75

#No meals or Pullman included between Chicago and St. Louis.

The costs shown above "without rail ticket" are for the benefit of passengers coming from the East or South with through rail tickets.

EXTRA CHARGE FOR SINGLE ROOM AT HOTELS \$6.75.

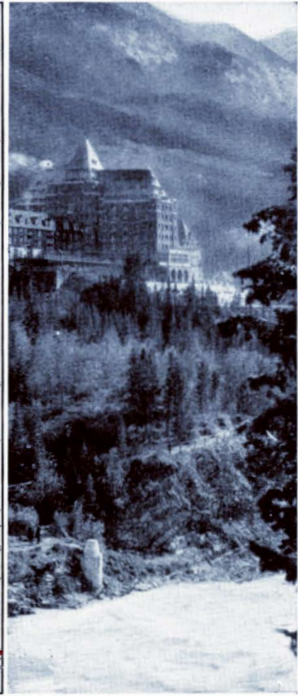
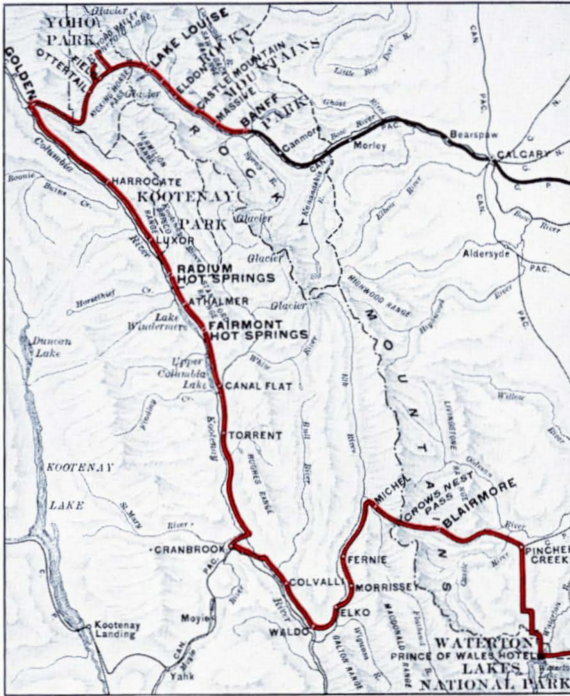
Rooms with bath are furnished at Many-Glacier, Lake Louise and Banff, but are not available at Lake McDonald Hotel, Blairmore or Radium Hot Springs.

TOURS LEAVE CHICAGO AND ST. LOUIS

Tour E-1 June 30
Tour E-2 July 7
Tour E-3 July 14

Tour E-4 July 21
Tour E-5 July 28
Tour E-6 August 4

Tour E-7 August 11
Tour E-8 August 18



*Map—Route of the Rawhide Trail and the Canadian Rockies
Upper right—Banff Springs Hotel
Lower—The indescribable charm of Lake Louise*

Pacific Northwest and the Canadian Rockies

Tour F — 13 Days

A scenic survey of both the American and the Canadian Rockies.

The great new cities of the Pacific Northwest Wonderland; Rainier National Park;

Emerald Lake; Lake Louise and Banff.

Lv Chicago either *10.30 or #10.45 PM	Burlington Sunday
Lv St. Louis 2.15 PM	Burlington Sunday
Lv St. Paul either *8.35 or #8.50 AM	 Monday
Lv Minneapolis either *9.10 or #9.25 AM	 Monday

#Tours F2-4-6-8 will use the Empire Builder over the Great Northern

*Tours F1-3-5-7 will use the North Coast Limited over the Northern Pacific



Across the continent on either the Empire Builder or North Coast Limited, both of them among America's finest trains.

Through Minnesota and North Dakota on Monday; then over the main range of the Montana Rockies on Tuesday . . . an eventful day of sight-seeing from the car window as the train winds through many a rock walled canyon, along rushing mountain streams with the big pyramid peaks of the Rockies constantly in view.

Ar Portland 7.35 AM	S. P. & S Wednesday
-------------	---------------	-----------	-----------------

And here we are in Portland, the City of Roses, with plans for an eventful morning of motor sight-seeing including the wonderful Columbia River Highway. Headquarters here are at the Multnomah Hotel.

Lv Portland 4.20 PM	Great Northern Wednesday
Ar Tacoma 8.05 PM	Great Northern Wednesday

Overnight at the Tacoma Hotel—a unique and interesting place, and one of the famous hostelries of the Pacific Northwest. We leave by motor Thursday morning for Rainier National Park, arriving at Paradise Valley at noon, with all eyes focused upon the colossal mountain perpetually crowned with snow. Opportunities galore for hikes or horseback rides to the glaciers, and as high as you want to climb up the slopes of the great mountain. The floor of the valley here is literally covered with wild flowers. Overnight at Paradise Inn.

Friday morning we motor back “down to earth” en route to Seattle for an afternoon of sight-seeing around the parks, lakes, residential sections, etc., putting up overnight at the Olympic Hotel.

Lv Seattle 9.00 AM	Boat Saturday
------------	---------------	------	----------------

Cruising across Puget Sound and the Straits of Juan de Fuca to Victoria which is on Vancouver Island and the capital of British Columbia. Here we have an engaging afternoon of motor sight-seeing to see all the interesting sights in this quaint English city including Butcherts Gardens, the Parliament Buildings, and other fascinating things. Overnight at the Empress Hotel.

No program at all Sunday morning. Chance for you to sleep late; go to church; finishing up sight-seeing—do anything you please.

Lv Victoria 1.45 PM Boat Sunday

Cruising again and delightfully through the San Juan Islands and across the Georgia Straits over to the mainland where our ship negotiates an interesting way up through the busy harbor to Vancouver. You will enjoy this wonderful afternoon ride.

Ar Vancouver 5.45 PM Boat Sunday

We stop at the Vancouver Hotel and on Monday morning enjoy a motor trip that embraces Stanley Park, Shaughnessy Heights, the foreign quarter and other points of interest in this famous Canadian city.

Lv Vancouver 2.45 PM Canadian Pacific Monday

And now a fine afternoon of sight-seeing as our train winds along the Fraser River and between towering walls of innumerable canyons which we see to the best advantage from the open top observation car as we climb into the Canadian Rockies.

Ar Field 10.45 AM Canadian Pacific Tuesday

We leave the train here for several days. Motors meet us and we wheel away to charming Emerald Lake for luncheon. In the afternoon we continue the motor trip, through Kicking Horse Canyon and Yoho Valley to that gem of the Rockies, Lake Louise, with the incomparable Chateau our home while here.

Wednesday morning is free time for hiking, riding, swimming or boating. In the afternoon we motor along the Bow River and through Johnson Canyon over to Banff, and the big luxurious castle which is Banff Springs Hotel.

An open day Thursday in which to enjoy this fascinating hotel and the splendor of the mountains roundabout.

Lv Banff 5.00 PM Canadian Pacific Thursday

Ar Minneapolis 6.55 AM Soo Line Saturday

Ar St. Paul 7.35 AM Soo Line Saturday

A pleasant daylight ride 300 scenic miles along the upper Mississippi River.

Ar Chicago 7.10 PM Burlington Saturday

Ar St. Louis 7.40 AM Sunday

COST OF COMPLETE TOUR

	From CHICAGO		#From ST. LOUIS	
	Without Railroad Ticket	With Railroad Ticket	Without Railroad Ticket	With Railroad Ticket
Two persons in a lower berth (each)	\$121.48	\$207.48	\$122.35	\$206.10
One person in a lower berth	137.85	223.85	158.35	222.10
One person in an upper berth	131.30	217.30	131.95	215.70

#No meals or Pullman included between Chicago and St. Louis.

EXTRA CHARGE FOR SINGLE ROOMS AT HOTELS: \$6.25.

The costs shown above "without rail ticket" are for the benefit of passengers coming from the East or South with through rail tickets.

TOURS LEAVE CHICAGO AND ST. LOUIS

Tour F-1 June 30

Tour F-2 July 7

Tour F-3 July 14

Tour F-4 July 21

Tour F-5 July 28

Tour F-6 August 4

Tour F-7 August 11

Tour F-8 August 18

Glacier National Park

Tour G — 7 Days

Lv Chicago	10.45 PM	Burlington	Sunday
Lv St. Louis	2.15 PM	Burlington	Sunday
Lv St. Paul	8.50 AM	Great Northern	Monday
Lv Minneapolis	9.25 AM	Great Northern	Monday

Aboard the famed trans-continental flyer, the "Empire Builder" across Minnesota and through the Dakota wheat fields.

Ar Glacier Park	12.40 PM	Great Northern	Tuesday
-----------------	----------	----------------	---------

FOUR DAYS OF ADVENTURE IN THE LAND OF SHINING MOUNTAINS



Our reception committee is a band of war-bonneted braves of the Blackfeet tribe, and to the accompaniment of tom toms and tribal chants, we stroll up to the big Glacier Park Hotel for luncheon.

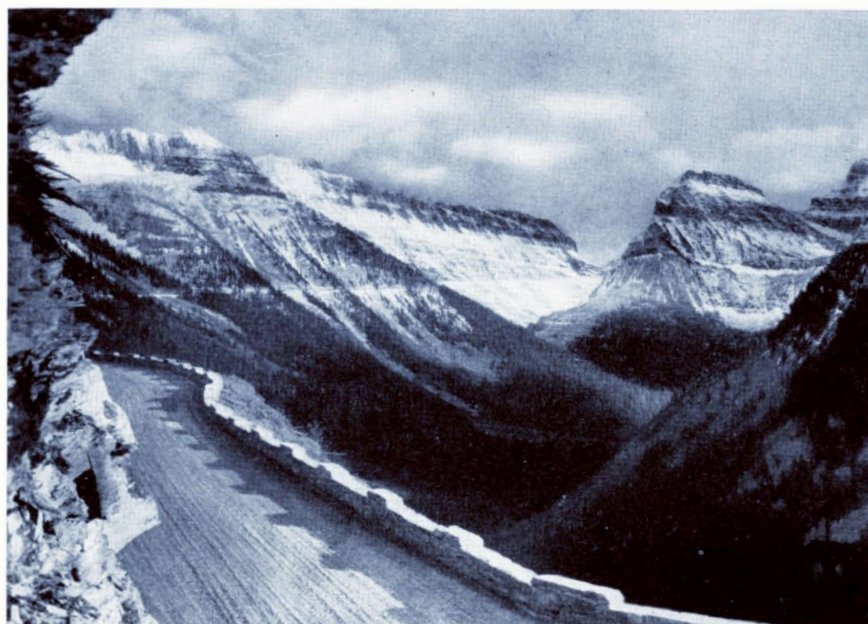
In the afternoon open-top motor cars carry us over the Blackfeet Highway—the whole route walled up on the west by Glacier Park's towering peaks, over the Hudson Bay Divide, and along the edge of lovely St. Mary Lake and the Sherburne Lake to Many-Glacier Hotel on the shore of Swiftcurrent Lake, surrounded by the wildest confusion of mountain grandeur on the continent.

On the program for Wednesday morning is a boat trip on Swiftcurrent Lake and across Josephine Lake for a close-up view of the great icefield which is Grinnell Glacier. The balance of the day is left to your choice of diversions . . . mountain climbing on horseback or afoot, fishing for trout, or boating. An exceedingly interesting and worthwhile trip is a horseback ride up to Iceberg Lake to see a strange sight. Or just plain idleness has its compensations here in the way of staggering mountain alpine vistas. Dancing in the evening; and an interesting talk by a park ranger.

Riding enthusiasts will get a thrill out of an all-day horseback trip from Many-Glacier to the Sun Chalets on a fascinating trail over Piegan Pass. It costs a little extra and is well worth it.

Thursday we motor around to Going-to-the-Sun Chalets over the new Highway that skirts Upper St. Mary Lake—every mile of the way bringing new alpine vistas to challenge the imagination. Afternoon at this charming group of chalets perched like an eagle's nest on the mountain side. Hikes this afternoon and another ranger to talk to us tonight about this section of the park.

Friday morning we leave the Sun Chalets by motor for a thrilling climax to our Glacier Park experience. Over the new Going-to-the-Sun Highway over Logan Pass, where for years it was considered impossible to build a highway. The mountain views to be seen from this new highway, opened just last year, are the most beautiful of all. The route takes us over the Continental Divide and down the west slope of the Rockies and into an entirely new country having different trees and other vegetation. We follow McDonald Creek down to the big lake of that name and put up for several hours at Lake McDonald Hotel before continuing down along the lake shore to Belton on the Flathead River and the end of our motor trip.



New Going-to-the-Sun Highway—Glacier National Park.

Lv Belton..... 4.45 PM Great Northern..... Friday

Fifty miles along the Flathead River which forms the southern boundary of the National Park, then across the plains of Montana and Minnesota.

Ar Minneapolis 10.00 PM Great Northern Saturday

Ar St. Paul 10.30 PM Great Northern..... Saturday

Ar Chicago 8.45 AM Burlington..... Sunday

Ar St. Louis..... 6.00 PM Sunday

COST OF COMPLETE TOUR

Including all necessary expenses such as Pullman, lodging (two persons to a room without bath), all meals, and auto trips as shown in itinerary.	From CHICAGO		#From ST. LOUIS	
	Without Railroad Ticket	With Railroad Ticket	Without Railroad Ticket	With Railroad Ticket
Two persons in a lower berth (each)	\$61.88	\$110.08	\$62.88	\$112.98
One person in a lower berth.....	72.00	120.20	75.00	125.10
One person in an upper berth.....	67.95	116.15	70.35	120.45

#No meals or Pullman included between Chicago and St. Louis.

EXTRA CHARGES AT HOTELS: Single Room without bath \$2.00; Double Room with bath (per person) \$5.00; Single Room with bath \$7.00.

The costs shown above "without rail ticket" are for the benefit of passengers coming from the East or South with through rail tickets.

TOURS LEAVE CHICAGO AND ST. LOUIS

Tour G-1 June 30

Tour G-4 July 21

Tour G-7 August 11

Tour G-2 July 7

Tour G-5 July 28

Tour G-8 August 18

Tour G-3 July 14

Tour G-6 August 4

Three National Parks ^{and the} Pacific Northwest

Tour H — 14 Days *(Tour H-1 leaves June 30)* *(Tour H-3 leaves July 21)*

WESTBOUND VIA YELLOWSTONE PARK—EASTBOUND VIA GLACIER PARK

Lv Chicago.....	10.30 PM	Burlington.....	Sunday
Lv St. Louis.....	2.15 PM	Burlington.....	Sunday
Lv St. Paul.....	8.35 AM	Northern Pacific.....	Monday
Lv Minneapolis.....	9.10 AM	Northern Pacific.....	Monday

We're headed for Cody, Wyoming, the home of Buffalo Bill and the scenic entrance to Yellowstone National Park.

Ar Cody.....	11.00 AM	Burlington.....	Tuesday
--------------	----------	-----------------	---------

After luncheon we motor 90 miles to Yellowstone Park over the famous Cody Road through the Shoshone Canyon and over the Absaroka Mountains, arriving at the Grand Canyon Hotel for a 36-hour visit to see and enjoy the colossal colorful Yellowstone Canyon and its wonderful waterfall.

Thursday morning we see the first of the hot water phenomena at the Norris Geyser Basin and proceed later to Old Faithful Inn for an exciting time amid the scores of geysers which distinguish this region from all other earthly areas.

Friday we motor along the shore of Yellowstone Lake, stopping again at the Grand Canyon Hotel for luncheon, thence via Dunraven Pass and Tower Falls, and the tinted terraces at Mammoth Hot Springs.

Lv Gardiner.....	6.00 PM	Northern Pacific.....	Friday
Ar Yakima.....	7.00 AM	Northern Pacific.....	Sunday

Motoring through the famed Yakima orchards and the great Washington forests over the Rainier National Park Detour . . . Natchez Pass, Tipsoo Lake, and the Sunrise side of Mt. Rainier, reaching Seattle in time for dinner and overnight at the Olympic Hotel.

Sight-seeing in Seattle on Monday; leaving in the evening on the train for Vancouver, B. C. for overnight at the Georgia Hotel. Tuesday brings an all-day boat trip with a stopover for motor sight-seeing at Victoria on Vancouver Island, arriving Seattle 9.00 p.m.

Ar Portland.....	7.00 AM	Great Northern.....	Wednesday
------------------	---------	---------------------	-----------

We make the Columbia River Highway and city trips by automobile on Wednesday and leave for the east this evening.

Ar Glacier National Park.....	4.45 PM	Great Northern.....	Thursday
-------------------------------	---------	---------------------	----------

Overnight at Lake MacDonald Hotel and a wonderful adventure on Friday motoring over Logan Pass with a stopover at Going-to-the-Sun Chalets and on to Many Glacier Hotel amid some of the finest mountain scenery on the continent.

In the afternoon we motor down through the mountains to Glacier Park Hotel for dinner.

Lv Glacier National Park.....	6.55 PM	Great Northern.....	Friday
Ar Minneapolis.....	10.00 PM	Great Northern.....	Saturday
Ar St. Paul.....	10.30 PM	Great Northern.....	Saturday
Ar Chicago.....	8.45 AM	Burlington.....	Sunday
Ar St. Louis.....	6.00 PM	Burlington.....	Sunday

Tour H — 14 Days *(Tour H-2 leaves July 14)* *(Tour H-4 leaves Aug. 4)*

WESTBOUND VIA GLACIER PARK—EASTBOUND VIA YELLOWSTONE PARK

Lv Chicago.....	10.45 PM	Burlington.....	Sunday
Lv St. Louis.....	2.15 PM	Burlington.....	Sunday
Lv St. Paul.....	8.50 AM	Great Northern.....	Monday
Lv Minneapolis.....	9.25 AM	Great Northern.....	Monday
Ar Glacier Park.....	12.40 PM	Great Northern.....	Tuesday

After luncheon motors wheel us up over the Blackfeet Highway through the mountains to Many Glacier Hotel on the shore of Swiftcurrent Lake for overnight—walled all around by great peaks of the Rockies.

Wednesday morning we motor over the wonderful new Going-to-the-Sun Highway by way of St. Mary Lake and Going-to-the-Sun Mountain; over Logan Pass where the mountain vistas outrival the Alps, on the way to Lake MacDonald Hotel for luncheon.

Lv Glacier National Park.....	2.30 PM	Great Northern.....	Wednesday
Ar Portland.....	7.35 AM	S. P. & S. Ry.....	Thursday

We motor today over the far-famed Columbia River Highway and leave on the train at 4.20 p.m. for Seattle, with an overnight stop at the Olympic Hotel.

Sight-seeing by motor in Seattle on Friday, leaving on the train at 5 p.m. for Vancouver and overnight at the Georgia Hotel.

Saturday, and an all-day boat trip across Puget Sound to Victoria, the island capital of British Columbia, getting back to Seattle for overnight again at the Olympic Hotel.

Motoring all day Sunday over the fine new highway that lies along the north side of Mt. Rainier; through the great forests of Washington and the amazing orchards of the Yakima Valley.

Lv Yakima.....	11.00 PM	Northern Pacific.....	Sunday
Ar Gardiner.....	11.00 AM	Northern Pacific.....	Tuesday

We enter Yellowstone National Park this morning for a complete 3½ day motor tour through the world's greatest geyserland; seeing the geysers, hot springs, mud volcanoes, the bears and other wild animal life; enjoying the breath-taking Yellowstone Canyon and its majestic Great Fall over which the white torrent crashes from a height twice that of Niagara; stopping at the splendid big Yellowstone hotels Tuesday, Wednesday and Thursday nights.

Out of the Park on Friday afternoon over the Cody Road, sometimes called the most scenic 90 miles in America.

Lv Cody.....	7.40 PM	Burlington.....	Friday
Ar Minneapolis.....	10.10 PM	Northern Pacific.....	Saturday
Ar St. Paul.....	10.30 PM	Northern Pacific.....	Saturday
Ar Chicago.....	9.00 AM	Burlington.....	Sunday
Ar St. Louis.....	6.00 PM	Burlington.....	Sunday

COST OF COMPLETE TOUR

Including all necessary expenses such as Pullman, Hotels (two persons to a room with bath), meals and auto trips as shown in itinerary.	From CHICAGO		From ST. LOUIS	
	Without Railroad Ticket	With Railroad Ticket	Without Railroad Ticket	With Railroad Ticket
Two persons in a lower berth (each).....	\$152.98	\$240.13	\$154.85	\$239.75
One person in a lower berth.....	169.85	257.00	172.35	257.25
One person in an upper berth.....	163.10	250.25	165.38	250.25

EXTRA CHARGE FOR SINGLE ROOM AT HOTELS \$5.50.

The costs shown above "without rail ticket" are for the benefit of passengers coming from the East or South with through rail tickets.

Yellowstone National Park

Tour I Leaving Saturdays — 7 Days Tour J Leaving Sundays

Lv Chicago 10.30 PM Burlington (I) Saturday (J) Sunday
Lv St. Louis 2.15 PM Burlington (J) Sunday

St. Louis passengers for Tour J join the Chicago group at St. Paul Monday morning. St. Louis passengers for Tour I will leave St. Louis on any convenient train Saturday and join the tour at Chicago Saturday night.

Lv St. Paul 8.35 AM Northern Pacific (I) Sunday (J) Monday
Lv Minneapolis 9.10 AM Northern Pacific (I) Sunday (J) Monday

En route on the North Coast Limited, a famous trans-continental flyer, through the lake-park region of Minnesota and through the endless North Dakota wheat country. An interesting interlude comes late in the afternoon in the form of a pow wow with the Sioux Indians at Mandan, N. D.

Ar Gardiner 11.00 AM Northern Pacific (I) Monday (J) Tues.

FOUR DAYS OF FASCINATING ADVENTURE IN THE YELLOWSTONE WONDERLAND AND OVER THE THRILLING CODY ROAD



(I) Monday, (J) Tuesday. The big yellow motor cars await our arrival, and within a minute or two we wheel through the Roosevelt Memorial Arch—north entrance to "Wonderland." We are bound for Mammoth Hot Springs where we pause briefly at the Park Museum before enjoying a good lunch. Then on to the first of Yellowstone's strange sights, the steaming acres of pools and springs of hot water that spill over innumerable fanciful and beautiful tinted rock terraces built here through the ages by the lime bearing waters.

As the motor ride continues each mile discloses new wonders in the way of the curious "Hoodoos," the Golden Gate, the spring of Apollinaris water, a huge cliff of black glass, a mountain emitting steam from a thousand jets. Famed Norris Geyser Basin, Beryl Springs, Gibbon Canyon, the Firehole River, the strange bubbling "paint pots", and so up to Old Faithful Geyser itself which dominates the Upper Geyser Basin, although in fact it is only one among scores of these strange phenomena that leave you guessing despite the evidence of your own eyes. Maybe Old Faithful "shoots" within a few minutes after our arrival. At least we'll guarantee you will not have to wait more than 60 minutes to see the grand explosion of a million and a half gallons of water shot 150 feet or more into the air as the world's most famous geyser swings into action.

Right after dinner you'll want to be on hand around behind the lodge for the bear convention. You'll see anywhere from a dozen to thirty of these creatures—blacks, browns, grizzlies, maybe some cubs too, and will listen to the extremely interesting "bear talk" on the part of a park ranger.

(I) Tuesday (J) Wednesday. Intensive sight-seeing this morning. A government ranger will talk to us—all about the causes underlying the strange hot water phenomena in this region, after which we accompany him on a walking tour throughout the entire geyser basin to see all manner of "Believe it or not" sights which set this region apart from all other earthly areas.

The motors call around for us after lunch and the tour is resumed by motor—two times over the Continental Divide which takes the shape of a

loop; stopping anon to see the "Fishing Cone," more plopping paint pots, probably meeting up with Yellowstone's famed "Holdup bear;" past a mud volcano, coming finally to the gigantic Yellowstone Canyon and the majestic great fall, one of the earth's sublimest spectacles.

(I) Wednesday, (J) Thursday. Motoring in the morning up the slope of Mt. Washburn, over Dunraven Pass to Tower Falls and back, with a full afternoon left entirely open for a close inspection of the wonderful canyon from various vantage points of your own choosing.

(I) Thursday, (J) Friday. More hours at the Canyon this morning just to prove that you didn't dream what you saw yesterday. You'll like this. Build your sight-seeing hopes as high as you will and count upon the realization exceeding your wildest expectations.

One of the greatest experiences of all has been reserved for the end of the Yellowstone adventure. This is a fine motor trip over the Cody Road, the perfect motor highway that connects Yellowstone Lake with Buffalo Bill's little home town of Cody, Wyoming, 90 miles east. Here motoring is no mere form of transportation. It is the means by which you gain close-up views of virgin country—endless forest, the scenic secrets of the high Absaroka Mountains, the vastnesses of the Great Shoshone Forest, towering rock walls that are curiously eroded, a section characterized by the famous dude ranches; finally a thrilling up-and-down climb through the six-mile Shoshone Canyon before reaching the plains which lie beyond Cedar Mountain.

Lv Cody..... 7.40 PM Burlington (I) Thursday (J) Friday
 Sioux Indians at the station on arrival of our train at Mandan.

Ar Minneapolis 10.10 PM Northern Pacific (I) Friday (J) Saturday
 Ar St. Paul 10.45 PM Northern Pacific (I) Friday (J) Saturday
 Ar Chicago 9.00 AM Burlington Route (I) Sat. (J) Sunday
 Ar St. Louis 6.00 PM (I) Sat. (J) Sunday

COST OF COMPLETE TOUR

	From CHICAGO		#From ST. LOUIS	
	Without Railroad Ticket	With Railroad Ticket	Without Railroad Ticket	With Railroad Ticket
Including all necessary expenses such as Pullman, *lodging (two persons to a room without bath), all meals, and auto trips as shown in itinerary.				
TOUR I				
Two persons in a lower berth (each)	\$63.15	\$110.08	\$63.13	\$111.98
One person in a lower berth.....	73.25	120.20	73.25	122.10
One person in an upper berth.....	69.20	116.15	69.20	118.05
TOUR J				
Two persons in a lower berth (each)	\$63.15	\$110.08	\$64.13	\$112.98
One person in a lower berth.....	73.25	120.20	74.00	122.85
One person in an upper berth.....	69.20	116.15	70.05	118.90

*Via Lodges through Yellowstone; Via Hotels \$7.00 higher. EXTRA CHARGES AT HOTELS: Single Room without bath \$8.50; Double Room with bath (per person) \$10.00; Single Room with bath \$11.50.
 #No meals or Pullman included between St. Louis and Chicago.

The costs shown above "without rail ticket" are for the benefit of passengers coming from the East or South with through rail tickets.

TOURS LEAVE CHICAGO AND ST. LOUIS

"I" Tours

Tour I-1 June 29
 Tour I-2 July 6
 Tour I-3 July 13

Tour I-4 July 20
 Tour I-5 July 27

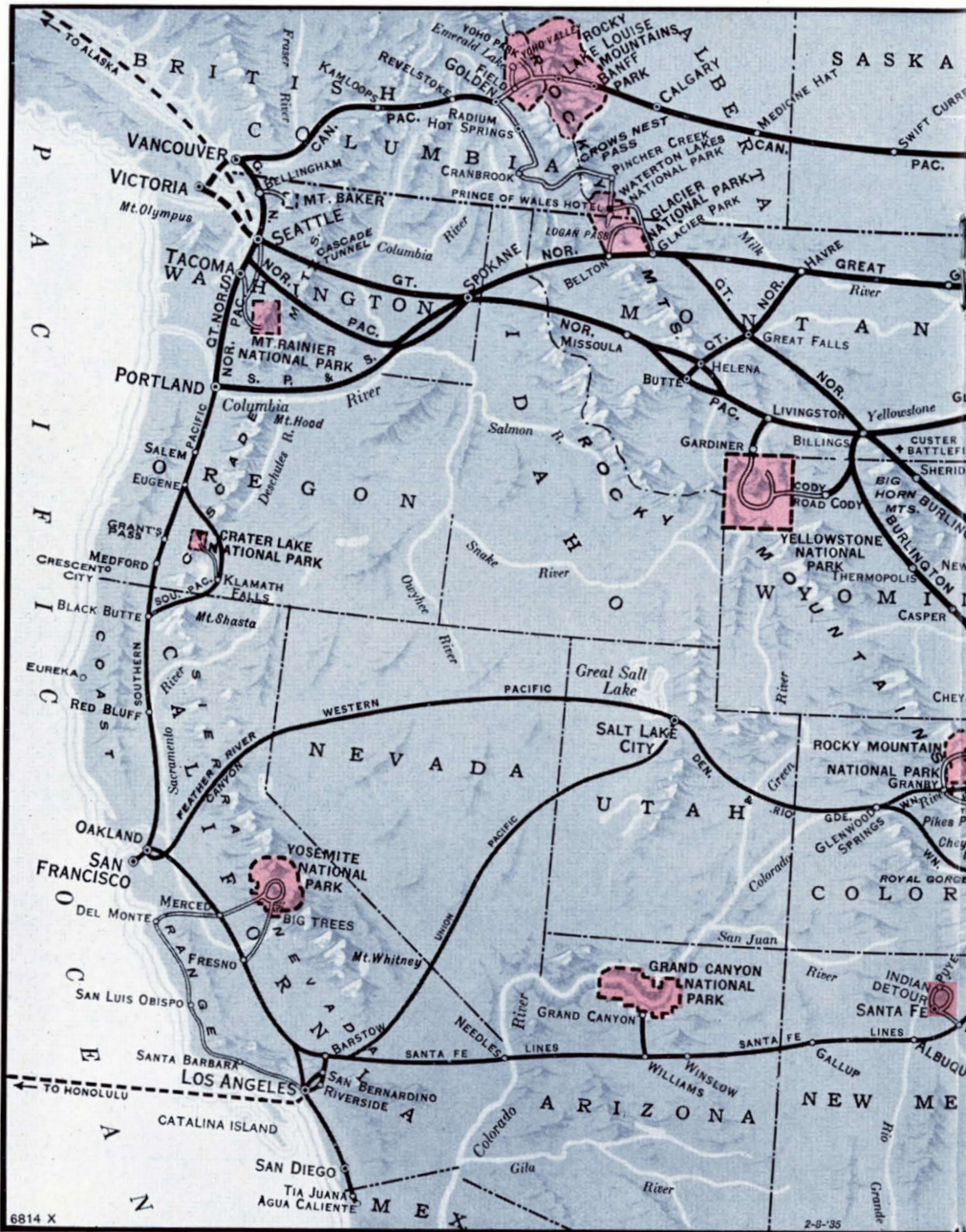
Tour I-6 August 3
 Tour I-7 August 10
 Tour I-8 August 17

"J" Tours

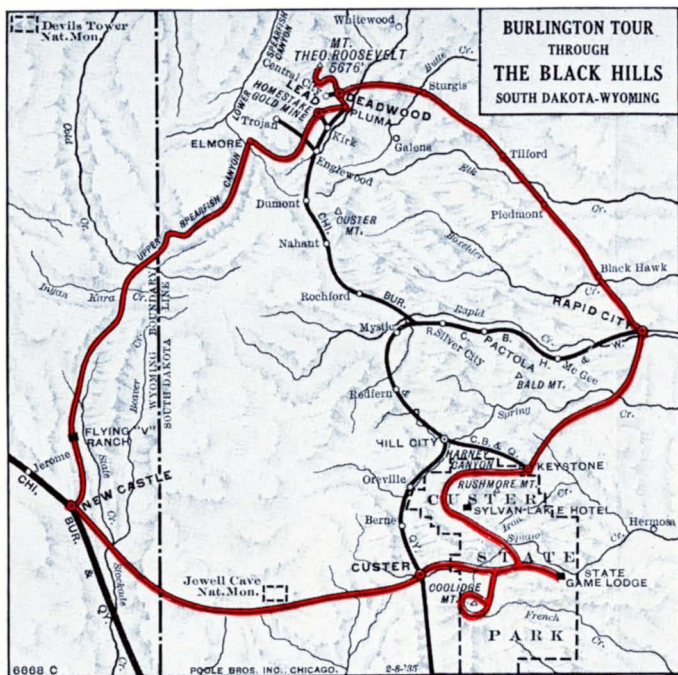
Tour J-1 June 16
 Tour J-2 June 23
 Tour J-3 June 30
 Tour J-4 July 7

Tour J-5 July 14
 Tour J-6 July 21
 Tour J-7 July 28
 Tour J-8 August 4

Tour J-9 August 11
 Tour J-10 August 18
 Tour J-11 August 25
 Tour J-12 September 1



The Routes Followed by Burlington Escorted Tours—The Rocky



When Nature built the Black Hills she gave them foundations of gold and silver, copper, tin, lead, mica, coal and so many others that the list of 150 and more would seem to run the whole gamut of mineral substances from A to Z, which in this case is no mere manner of speaking, since they start with ataite and end with zoisite. She reared them in the purest of dry, invigorating air laden with the fragrance of the pines and possessed of qualities both pleasant and beneficial. She loosed mountain torrents which have gridded the slopes with tremendous canyons, piled great rock masses one upon another in a way which has no counterpart anywhere.

From time immemorial the Indians—Sioux, Cheyenne, Crow, Arapahoe, Otoe, Pawnee and Mandan, fought each other savagely for possession of this great hunting ground known as *Paha-Sapa* (the mountains that are black) and the healing waters of the hot mineral springs—*Mini-pazhuta* (medicine waters)—gift of the Great Spirit. Finally the Sioux were victorious in a great final fight at Battle Mountain near the present site of Hot Springs and thereafter held the Hills against all comers until 1876 when they gave them up to the United States Government under a treaty.

In justice to the doughty Sioux, let it be said they battled with characteristic skill and courage against any encroachment upon their domain by red men or white, but when in June of 1874 two miners panning the placer gravels of French Creek washed out a hatful of little yellow particles, the resulting tide of gold-mad humanity that swept into the Hills proved irresistible and the astute Sioux finally gave up the unequal fight and relinquished their beloved *Paha-Sapa*.

Croesus may well have envied Lead, S. D., its great "HOME-STAKE"—richest mine in the world, out of which has come more than \$300,000,000 in gold and which is still producing at the rate of \$6,000,000 per year.

There is Deadwood—remindful of road agents, cross-country stage coaches, fortunes easily won by day with pick, shovel and placer pan . . . easily lost during reckless nights in the roaring gold camp whose fame swept 'round the world.

There is the little town of Custer, which had its beginning when Major-General George A. Custer and his "long-knife" soldiers rendezvoused here during the Indian campaigns which culminated in the ill-fated Battle of the Little Big Horn up north there just over the Montana line.

Live those days again in fancy . . . the roaring time when hearts were big and trigger fingers whimsical . . . Custer . . . Wild Bill Hickok . . . Deadwood Dick . . . Calamity Jane . . . here they wrote their glowing passages into the history of the Old West.

Here phantom stage coaches lurch and rumble down the old gold trail from Deadwood Gulch. The ghostly Winchesters echo. And the glamour of adventurous days still lingers.

Black Hills and Yellowstone Park

Tour L — 10 Days

Lv Chicago.....	11.45 PM	Burlington.....	Saturday
Lv St. Louis.....	11.59 PM	Burlington.....	Saturday
Ar Newcastle.....	9.14 AM	Burlington.....	Monday

TWO DAYS OF ADVENTURE IN THE ROMANTIC BLACK HILLS



We step from the train to motor cars and bow along over the new highway through an old country. First stop is Custer, a little town that sprang to life with the coming of the immortal Major General George A. Custer and the famous 7th Cavalry at the outbreak of hostilities between the Indians and the whites.

Here it was, in French Creek, just at the edge of town, that prospectors found the first precious nuggets that brought on the Gold Rush celebrated in song and story around the earth.

Entering Custer State Park we ascend to the top of Mount Coolidge for a fifty mile panoramic view of the southern Black Hills, whence we wheel up through to the pines to lunch at the State Game Lodge which was the Summer White House in 1927. The motor ride is resumed in the afternoon—up through the “Aisle of Pines” and over the “Needles” Highway where we see an astounding arrangement of innumerable monoliths of grotesque shape and colossal size—a sight that probably has no counterpart anywhere. We pause at a mountain lodge on the shore of gem-like Sylvan Lake, then spiral down through Harney Canyon. Our route takes us right up to the base of Rushmore Mountain for a close-up view of the world’s largest undertaking in sculpture—the heroic figures of Washington, Lincoln, Jefferson and Roosevelt which Gutzon Borglum is carving out of the granite wall at the top of the big peak. Late in the afternoon we arrive in Rapid City for overnight at the Alex Johnson Hotel.

Tuesday morning we motor up to Deadwood whose history is full of the romance and tradition of raw old gold days, treasure coaches, highwaymen, Wild Bill, Calamity Jane, Preacher Smith, and the whole gay company of adventurers that helped to make Deadwood the brightest spot in all the west. As everybody knows, the neighboring town of Lead is the site of the Homestake Mine, for fifty years right down to now the greatest gold mine in the world. While here we motor to the top of Mt. Roosevelt, then over for a good close look at the Homestake. Overnight at the Franklin Hotel in Deadwood. Wednesday morning motoring up through spruce-lined Spearfish Canyon, down through Ice-box Canyon; in and out among the foothills on the way to Newcastle and the railroad.

Lv Newcastle.....	9.14 AM	Burlington.....	Wednesday
-------------------	---------	-----------------	-----------

Northwestward on the train with the summits of the Bighorn Mountains in full view most of the afternoon; alongside the Little Bighorn River with the white markers on the historic Custer Battlefield recalling the Indian Wars of 1876. Continuing, our route lies through the great Reservation of the Crow Indian nation as we proceed to Billings where we stay overnight at the Northern Hotel.

Lv Billings.....	5.55 AM	Northern Pacific.....	Thursday
------------------	---------	-----------------------	----------

Breakfast in the dining car as the North Coast Limited speeds westward along the Yellowstone River.

Ar Gardiner.....	11.00 AM	Northern Pacific.....	Thursday
------------------	----------	-----------------------	----------

POOLS THAT BOIL LIKE WITCHES' CAULDRONS



Here we board the big yellow motor cars, and the Yellowstone Tour begins at once. Within an hour we shall be exploring the first of Yellowstone's endless wonders—the hundreds of springs and pools of water both hot and cold that overflow fantastically across the lime formations which cover many acres of ground at Mammoth Hot Springs.

This afternoon we get our first view of the geysers at Norris; and other fascinating curiosities at Excelsior Geyser Basin on the way up to Old Faithful, and the greatest geyser region in the world. After dinner everybody calls around to get acquainted with the bears which are as much a part of Yellowstone as the geysers. No reason why we can't see Old Faithful erupt four or five times this evening.

Friday morning a government ranger escorts the entire party on a hiking trip over the whole geyser basin—tells us all about the causes underlying the strange hot water manifestations in this oddest of earthly areas.

In the afternoon we motor over to the colossal Yellowstone Canyon, topping the Continental Divide twice on the way, rolling along the shore of Yellowstone Lake, stopping en route to see different curious things that must be seen here or nowhere.

Our time on Saturday is divided between a morning trip over Dunraven Pass to Tower Falls, and an afternoon of exciting sight-seeing and adventurous exploration at the Grand Canyon which can be regarded only as one of the world's wonders.

More of this Sunday morning. Walking or climbing about to your heart's content; seeing the colorful blazing Canyon and admiring the wonderful waterfall at its head.

Our motor cars are brought around in the afternoon and we launch upon a thrilling climax to the entire Yellowstone Tour—motoring over the Cody Road, called the most scenic 90 miles in America. It penetrates the forested eastern section of Yellowstone, climbs up over the top of the far-flung Absaroka Mountains through Sylvan Pass; winds down a seven mile hill to the valley of the Shoshone River and reaches Cody on the plains beyond the mountains after negotiating the six-mile Shoshone Canyon.

Lv Cody..... 7.40 PM Burlington..... Sunday

En route on the North Coast Limited through hundreds of miles of North Dakota wheat and in and out among a good many of Minnesota's ten thousand lakes. An Indian ceremony on the way—Mandan, N. D.

Ar Minneapolis..... 10.10 PM Northern Pacific..... Sunday

Ar St. Paul..... 10.45 PM Northern Pacific..... Monday

Ar Chicago..... 9.00 AM Burlington..... Tuesday

Ar St. Louis..... 6.00 PM..... Tuesday

COST OF COMPLETE TOUR

	From CHICAGO		From ST. LOUIS	
	Without Railroad Ticket	With Railroad Ticket	Without Railroad Ticket	With Railroad Ticket
Two persons in a lower berth (each).....	\$104.15	\$151.10	\$104.03	\$152.88
One person in a lower berth.....	112.65	159.60	112.40	161.25
One person in an upper berth.....	109.25	156.20	109.05	157.90

*Via Lodges through Yellowstone; Via Hotels \$7.00 higher. EXTRA CHARGES AT HOTELS: Single Room without bath \$4.00; Double Room with bath (per person) \$10.00; Single Room with bath \$14.00.

†No meals or Pullman included between Chicago and St. Louis.

‡Rooms with bath are furnished at Rapid City and Billings.

The costs shown above "without rail ticket" are for the benefit of passengers coming from the East or South with through rail tickets.

TOURS LEAVE CHICAGO AND ST. LOUIS

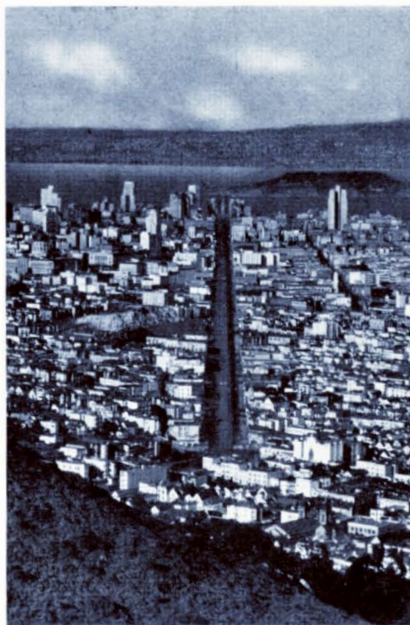
Tour L-1 June 22
Tour L-2 June 29
Tour L-3 July 6

Tour L-4 July 15
Tour L-5 July 20
Tour L-6 July 27

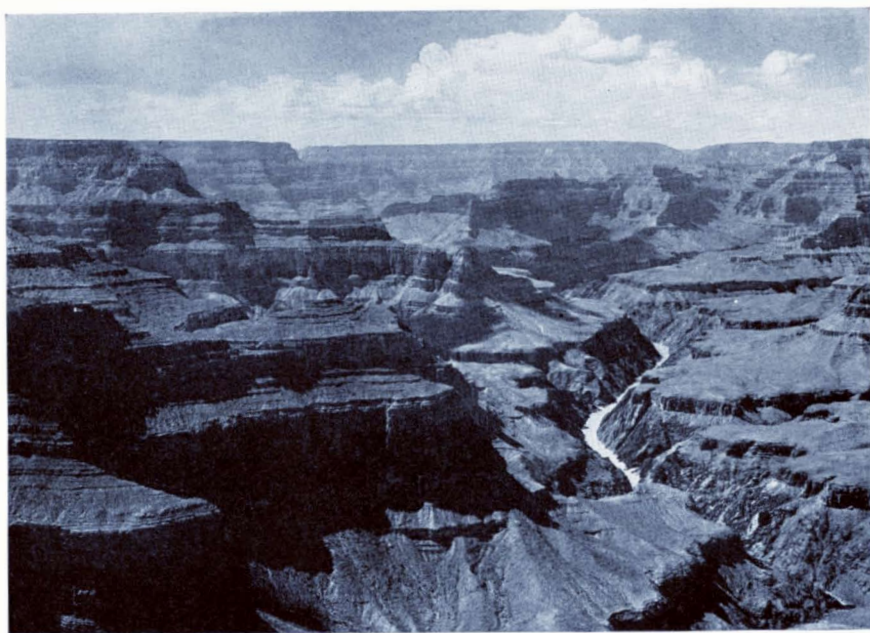
Tour L-7 August 3
Tour L-8 August 10
Tour L-9 August 17



*A Palm Edged Boulevard
Los Angeles*



Downtown San Francisco



Grand Canyon of Arizona—a World Wonder

California and the Pacific Northwest

Tour N — 14 Days

Lv Chicago.....	10.30 AM	Burlington.....	Sunday
Lv St. Louis.....	2.15 PM	Burlington.....	Sunday
Ar Denver.....	1.15 PM	Burlington.....	Monday

We make a short motor trip around the business and residential sections of Denver.

Lv Denver.....	3.30 PM	D. & R. G. W.....	Monday
----------------	---------	-------------------	--------



Now for a new experience in trans-continental travel. Our course this afternoon takes us over an entirely new route that climbs up through the Colorado mountains and then goes under instead of over the Continental Divide through the famous six-mile Moffat Tunnel that has been bored through mighty James Peak, a mile below its summit. Beyond the Tunnel's west portal we follow the Colorado River through Middle Park, a brand new country. We travel over America's newest piece of railroad track, the heralded "Dotsero Cut-off" then through Glenwood Springs, still following the Colorado River through beautiful mountain scenery.

Ar Salt Lake City.....	7.30 AM	D. & R. G. W.....	Tuesday
------------------------	---------	-------------------	---------

Time between trains here is devoted to a motor trip to see the Mormon Temple and Tabernacle, the State Capitol, parks, boulevards and fine residences.

Lv Salt Lake City.....	9.30 AM	Union Pacific.....	Tuesday
Ar Los Angeles.....	8.30 AM	Union Pacific.....	Wednesday

THREE FULL DAYS IN LOS ANGELES

We go to the Biltmore Hotel and then have a motor ride that embraces Los Angeles, Hollywood, Beverly Hills, Santa Monica and the beaches.

No little experience has taught us that our guests prefer to enjoy the time here in their own way rather than to be limited to a schedule and set program. Consequently we have no plans for Thursday and Friday. Do just as you please; make your own choice respecting sight-seeing and diversions among the endless possibilities in this fascinating place. Take your meals where you wish—pay for them as you go. The complete cost of this tour includes, in Los Angeles, only room with bath at the hotel and the motor trip Wednesday.

Maybe you'd like to devote a part of your time here to a side trip to San Diego where the California Pacific International Exposition will be an outstanding attraction.

Lv Los Angeles.....	8.50 PM	Southern Pacific.....	Friday
Ar Merced.....	8.55 AM	Southern Pacific.....	Saturday

SCENIC CHARM OF YOSEMITE NATIONAL PARK

Motors meet us here and we ride first for many miles through the world-famous orchard country, and then climb up through the mountains to Yosemite National Park putting up at Camp Curry in the artistic and comfortable bungalows with bath half hidden among the trees. Here until Sunday afternoon, we have plenty of time for leisurely hikes, rides, and sight-seeing on a grand scale in this outdoor wonderland. After lunch on Sunday we motor out to Merced.

Lv Merced.....	5.35 PM	Southern Pacific.....	Sunday
Ar San Francisco.....	10.10 PM	Southern Pacific.....	Sunday

Overnight at the William Taylor Hotel and a splendid motor tour on Monday to see the Presidio, Cliff House, Golden Gate Park, the residential section, the parks, boulevards, aquarium and other attractions.

CRATER LAKE AND THE PACIFIC NORTHWEST

Lv San Francisco..... 8.20 PM Southern Pacific..... Monday
Ar Klamath Falls..... 9.40 AM Southern Pacific..... Tuesday

Here we transfer to motor cars for a trip to Crater Lake National Park. We have all afternoon for the complete enjoyment of the bluest and most interesting lake in the world. Our visit includes a boat ride on the Lake to a geological marvel known as the "Phantom Ship."

Lv Klamath Falls..... 9.30 PM Southern Pacific..... Tuesday
Ar Portland..... 7.55 AM Southern Pacific..... Wednesday



After breakfast at the Multnomah Hotel we motor over the beautiful—sometimes exciting—Columbia River Highway. Mile after mile along the Columbia River over the self-same ground traversed by the Covered Wagon trains en route to the Willamette Valley on the "Road to Oregon."

Lv Portland..... 4.20 PM Great Northern..... Wednesday
Ar Seattle..... 9.20 PM Great Northern..... Wednesday

After spending the night at the Olympic Hotel we motor Thursday morning all about this great northwest metropolis and famous seaport, seeing its wonderful parks and residential section.

Lv Seattle..... *8.30 PM or †9.30 PM Thursday

*Tours 2, 4, 6 via Northern Pacific Ry. on the North Coast Limited

†Tours 1, 3, 5, 7 via Great Northern on the Empire Builder

Wheeling along pleasantly aboard one or the other of these crack trans-continental flyers—all day Friday through the towering Montana Rockies with glorious mountain vistas from the car window or observation platform.

Ar Minneapolis..... #10.10 PM or *10.00 PM Saturday
Ar St. Paul..... #10.45 PM or *10.30 PM Saturday
Ar Chicago..... #9.00 AM or *8.45 AM Burlington..... Sunday
Ar St. Louis..... 6.00 PM Sunday

COST OF COMPLETE TOUR

Including all necessary expenses such as Pullman, lodging (two persons to a room with bath) meals and auto trips as shown in itinerary.	From CHICAGO		From ST. LOUIS	
	Without Railroad Ticket	With Railroad Ticket	Without Railroad Ticket	With Railroad Ticket
Two persons in a lower berth (each).....	\$117.48	\$203.48	\$116.10	\$199.85
One person in a lower berth.....	138.60	224.60	136.85	220.60
One person in an upper berth.....	150.15	216.15	128.55	212.30

†No meals or Pullman included between Chicago and St. Louis.

The costs shown above "without rail ticket" are for the benefit of passengers coming from the East or South with through rail tickets.

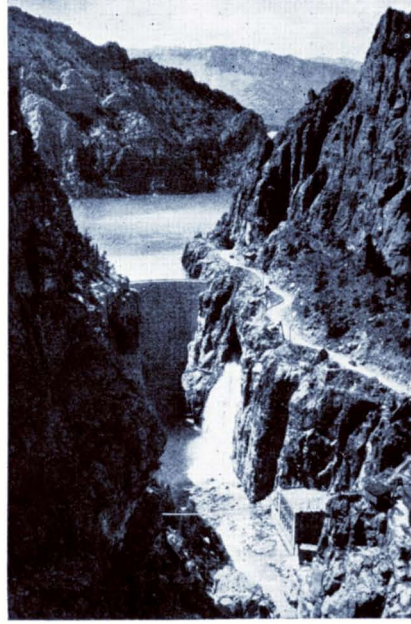
EXTRA CHARGES FOR SINGLE ROOM AT HOTELS: \$5.50.

TOURS LEAVE CHICAGO AND ST. LOUIS

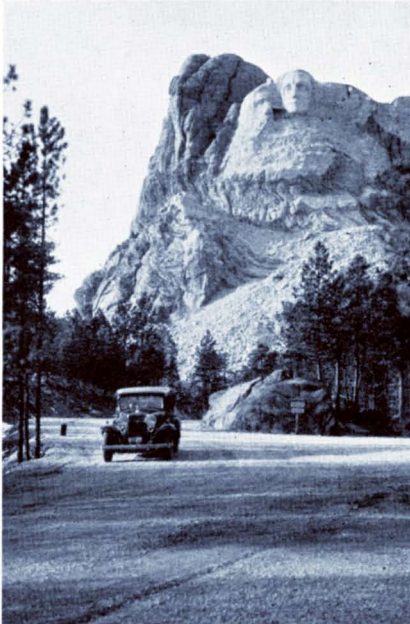
Tour N-1 June 30	Tour N-4 July 21	Tour N-6 August 4
Tour N-2 July 7	Tour N-5 July 28	Tour N-7 August 11
Tour N-3 July 14		



*Looking over the rim into the
Yosemite Valley*



*The six-mile Gorge of the Shoshone River—
Cody Road*



*Borglum's colossal monument
takes form on Rushmore
Mountain, Black Hills of S. D.*



*From flowered meadows to
eternal snow.
Rainier National Park*

California • Pacific Northwest Canadian Rockies

Tour NF — 21 Days

Lv Chicago.....10.30 AM Burlington.....Sunday
Aboard the crack flyer "The Aristocrat"

Lv St. Louis.....2.15 PM Burlington.....Sunday

Ar Denver.....1.15 PM Burlington.....Monday
We make a short motor trip around Denver during layover.

Lv Denver.....3.30 PM D. & R. G. W.....Monday

Over the new short route through the Moffat Tunnel; along the headwaters of the Colorado River, over America's newest piece of railroad track, the "Dotsero Cut-off" and through Glenwood Springs en route to Salt Lake City.

Ar Salt Lake City.....7.30 AM D. & R. G. W.....Tuesday

A motor sight-seeing trip between trains to see the Mormon Temple, Tabernacle, State Capitol, etc.

Lv Salt Lake City.....9.30 AM Union Pacific.....Tuesday

Ar Los Angeles.....8.30 AM Union Pacific.....Wednesday

After putting up at the Los Angeles Biltmore Hotel we enjoy a motor tour about Los Angeles, Hollywood, Beverly Hills, Santa Monica and the beaches. While here only the hotel room and motor trip are included in the cost of the tour. We have found that our guests prefer to be left to their own devices in this engaging place; consequently have arranged for no set program on Thursday and Friday—everybody free to carry out plans of his own making; paying his own way as he goes. A motor trip can easily be made to San Diego to visit the California Pacific International Exposition.

Lv Los Angeles.....8.50 PM Southern Pacific.....Friday

Ar Yosemite.....11.45 AM Motor.....Saturday

24 hours and more in which we revel to scenic beauties and outdoor marvels of Yosemite National Park. Headquarters here are Camp Curry where we live in inviting bungalows that include bath.

Sunday afternoon we motor through the wonderful orchard country back to Merced to catch the northbound train.

Ar San Francisco.....10.10 PM Southern Pacific.....Sunday

Our headquarters tonight and tomorrow are the William Taylor Hotel—Monday morning devoted to an exceedingly interesting sight-seeing tour by motor around this famed cosmopolitan city.

Lv San Francisco.....8.20 PM Southern Pacific.....Monday

Ar Klamath Falls.....9.40 AM Southern Pacific.....Tuesday

We motor up the side of a mountain to see Crater Lake National Park—one of the World's greatest marvels. The crater of a volcanic mountain whose top was blown off in some distant time, is filled by a great lake whose placid surface takes on a shade of blue that is matchless and marvelous.

Ar Portland.....7.55 AM Southern Pacific.....Wednesday

Why do they call Portland the "City of Roses?" Here's where you find out. The morning is devoted to a memorable drive over the Columbia River

Highway out to Horsetail Falls and back, 100 miles altogether; the afternoon is open.

Lv Portland.....	4.20 PM	Great Northern.....	Wednesday
Ar Tacoma.....	8.05 PM	Great Northern.....	Wednesday



Overnight at the Tacoma Hotel with a great adventure in prospect tomorrow. We motor up over an interesting highway to Paradise Inn, situated in a flower-carpeted valley at the foot of the noble snow-crowned mountain that is Rainier. Everybody anxious to put on hobnail shoes and mountain togs, acquire an alpenstock and head for nearby Nisqually Glacier. Fancy a real glacier within five minutes walk.

Next morning we motor back down the mountain and on up to Seattle for lunch and the afternoon in this northwest metropolis. Overnight at the Olympic Hotel.

Lv Seattle.....	9.00 AM	Boat.....	Saturday
Ar Victoria.....	12.45 PM	Boat.....	Saturday

Twenty-four hours in this island capital of British Columbia, for motor-ing all around to see the interesting sights in a quaint English city of rare beauty and charming atmosphere. All meals and overnight at the splendid Empress Hotel.

Lv Victoria.....	1.45 PM	Boat.....	Sunday
Ar Vancouver.....	5.45 PM	Boat.....	Sunday

Overnight at the Vancouver Hotel, and tomorrow morning a motor ride including Stanley Park, Shaughnessy Heights, the foreign section and so on.

Lv Vancouver.....	2.45 PM	Canadian Pacific.....	Monday
-------------------	---------	-----------------------	--------

An open top car on the rear of our train provides an unobstructed view as we follow the Fraser River into the majestic Canadian Rockies.

Ar Field.....	10.45 AM	Canadian Pacific.....	Tuesday
---------------	----------	-----------------------	---------

By motor to Emerald Lake for lunch. Continuing in the afternoon via Kicking Horse Canyon and Yoho Valley to Lake Louise for overnight at the incomparable Chateau.

Wednesday morning at Lake Louise—a scenic adventure; by motor in the afternoon via Johnson Canyon to Banff and the luxurious Banff Springs Hotel.

All day Thursday open for hiking, swimming, golf and sight-seeing in majestic surroundings.

Lv Banff.....	5.00 PM	Canadian Pacific.....	Thursday
Ar Minneapolis.....	6.55 AM	Soo Line.....	Saturday
Ar St. Paul.....	7.35 AM	Soo Line.....	Saturday
Ar Chicago.....	7.10 PM	Burlington.....	Saturday
Ar St. Louis.....	7.45 AM		Sunday

COST OF COMPLETE TOUR

	From CHICAGO		#From ST. LOUIS	
	Without Railroad Ticket	With Railroad Ticket	Without Railroad Ticket	With Railroad Ticket
Two persons in a lower berth (each).....	\$189.10	\$275.10	\$187.73	\$271.48
One person in a lower berth.....	210.10	296.10	208.35	292.10
One person in an upper berth.....	201.70	287.70	200.10	283.85

#No meals or Pullman included between Chicago and St. Louis.

EXTRA CHARGE FOR SINGLE ROOM AT HOTELS: \$11.25.

The costs shown above "without rail ticket" are for the benefit of passengers coming from the East or South with through rail tickets.

TOURS LEAVE CHICAGO AND ST. LOUIS

Tour NF-1 June 30	Tour NF-4 July 21	Tour NF-6 August 4
Tour NF-2 July 7	Tour NF-5 July 28	Tour NF-7 August 11
Tour NF-3 July 14		

Colorado • California • Grand Canyon

Tour O — 14 Days

Perhaps you are one of the large group of people who, having but two brief weeks for vacation purposes, have considered a trip to California as out of the question. But here it is, as you see,—made possible by the special Pullmans and other special arrangements all the way which make it possible to employ every hour of your time to the best advantage.

Lv Chicago 10.30 AM Burlington Sunday

Westbound aboard the Burlington's crack train, The Aristocrat.

Lv St. Louis 2.15 PM Burlington Sunday

During our 3-hour stay in Denver we motor around the Parks and residential sections.

Lv Denver 3.30 PM D. & R. G. W. Monday

Climbing up through the wonderful scenery of the Colorado Rockies over a new trans-continental route that takes us through the six-mile Moffat Tunnel, a mile under the top of James Peak; over the new and significant piece of railroad track, the famous "Dotsero Cut-off;" along the Colorado River, through Glenwood Springs and on to Salt Lake City.

Ar Salt Lake City 7.30 AM D. & R. G. W. Tuesday

Lv Salt Lake City 7.45 AM Western Pacific Tuesday

We skirt the shore of the Great Salt Lake this morning and enter upon the Great American Desert.

Ar San Francisco 8.50 AM Western Pacific Wednesday

We go to the Hotel Sir Francis Drake, our headquarters. This morning a motor tour all around San Francisco, seeing the Civic Center, Golden Gate Park, the Presidio and other interesting sights in a very interesting city. Afternoon and evening open to your own choice of activities.

Lv San Francisco 8.00 AM Southern Pacific Thursday

Ar Merced 12.26 PM Southern Pacific Thursday

Motoring after lunch up into the mountains to Yosemite Valley where we spend a full day and put up in the charming bungalows of Camp Curry. The big show tonight is the "Fire Falls," a spectacular stunt that you will enjoy.

We have all day Friday in this beautiful playground, for motoring, hiking, sight-seeing . . . lots of interesting things to do; many astonishing sights to see. After dinner we motor down through the mountains to Merced and our train.

Lv Merced 10.24 PM Southern Pacific Friday

Ar Los Angeles 8.45 AM Southern Pacific Saturday

The "City of Angels" . . . and movie stars. We shall see some of the latter. For we motor through Hollywood, Beverly Hills, down to the ocean at Santa Monica on Saturday.



Because experience has taught us that people want to "do as I please" in Los Angeles, Saturday afternoon and all of Sunday are left entirely free and open for this purpose. The cost of the tour includes room with bath at the Hotel Biltmore and includes too the motor sight-seeing tour on Saturday, but no meals or other plans. There is plenty of time for you to go over to Catalina Island, up Mt. Lowe, or Mt. Wilson, Pasadena, Riverside, the movie lots, night clubs, big cinema theatres—whatever you please and plenty to do indeed.

Monday morning we motor down along the seashore to San Diego which this year is the scene of the great California Pacific International Exposition. Headquarters here are the splendid U. S. Grant Hotel for two nights and a day.

Tuesday we motor to Agua Caliente in Mexico for lunch, returning in the afternoon via the Silver Strand and Coronado Beach.

Wednesday morning we motor back along the chain of beaches to Los Angeles.

Lv Los Angeles.....12.15 PM Santa Fe.....Wednesday

Eastward bound through the long chain of charming suburban towns and the orange groves—through the beautiful San Gabriel Valley as we climb up through Cajon Pass to the top of the San Bernardino range beyond which lies the Mojave Desert.

Ar Grand Canyon.....7.45 AM Santa Fe.....Thursday

All day for viewing the marvels of the Grand Canyon—one of the seven wonders of the modern world. Sensational scenery every moment; motoring along the rim of the colossal gorge to Hermit's Rest in the morning; afoot to various vantage points of your own choice in the afternoon. All meals here at the illustrious El Tovar.

Lv Grand Canyon.....8.00 PM Santa Fe.....Thursday

Homeward bound through New Mexico across a corner of Colorado, and the whole state of Kansas, where the wheat grows. During a half hour stop at Albuquerque you'll enjoy examining the wonderful exhibit of Indian things—fine turquoise, hammered silver, rugs, blankets, beadwork, etc.

Ar Kansas City.....5.00 PM Santa Fe.....Saturday
Ar St. Louis.....7.12 AM Burlington.....Sunday
Ar Chicago.....6.45 AM Santa Fe.....Sunday

COST OF COMPLETE TOUR

	From CHICAGO		From ST. LOUIS	
	Without Railroad Ticket	With Railroad Ticket	Without Railroad Ticket	With Railroad Ticket
Two persons in a lower berth (each).....	\$116.35	\$209.95	\$114.60	\$203.70
One person in a lower berth.....	136.85	250.45	132.35	221.45
One person in an upper berth.....	127.45	221.05	125.25	214.35

EXTRA CHARGE FOR SINGLE ROOM AT HOTELS \$4.50.

The costs shown above "without rail ticket" are for the benefit of passengers coming from the East or South with through rail tickets.

TOURS LEAVE CHICAGO AND ST. LOUIS

Tour O-1 June 16
Tour O-2 June 30
Tour O-3 July 7

Tour O-4 July 14
Tour O-5 July 21
Tour O-6 July 28

Tour O-7 August 4
Tour O-8 August 11

California Wonder Tour

Tour P \ 20 Days

A rare travel value. A trip that includes features which are beyond the possibilities of individual travel. It combines the convenience and speed of rail transport with the flexibility of practically all-motor transportation in California.

Lv Chicago 10.30 AM Burlington Sunday

On board the Burlington's crack flyer, the ARISTOCRAT.

Lv St. Louis 2.15 PM Burlington Sunday

Ar Denver 1.15 PM Burlington Monday

Between trains we see as much as possible of this mile-high city by motor.

Ar Denver 3.30 PM D. & R. G. W Monday

Lv Salt Lake City 7.45 AM Western Pacific Tuesday

Everyone is interested in the tremendous salt beds through which we pass this morning as the train skirts the southern edge of Great Salt Lake. Interesting mountain vistas later in the afternoon, as we move across the great American Desert.

Ar San Francisco 8.50 AM Western Pacific Wednesday

Headquarters are the Hotel Sir Francis Drake. This morning we see San Francisco by motor.

Lv San Francisco 8.00 AM Southern Pacific Thursday

Ar Merced 12.26 PM Southern Pacific Thursday

YOSEMITE—Most strikingly beautiful valley in the world



Afternoon motoring through fruit orchards and Merced Canyon to Yosemite. We spend the night in bungalow cabins (with bath) at Camp Curry and Friday afternoon continue via Inspiration Point and through the famous Mariposa Grove of Big Trees, returning to Merced late in the afternoon, and stay overnight at the Tioga Hotel in air-conditioned rooms.

Lv Merced 8.00 AM Motor Saturday

Over the Coast Highway, Del Monte and Santa Barbara

For the next three days we enjoy a splendid succession of vacation delights while motoring down the long California coast line.

Saturday morning we climb up the east slope of the coast range; cross over through Pacheco Pass and drop down into the verdant Santa Clara Valley to Del Monte. In the afternoon we take the scenic 17-mile drive along Pebble Beach, through Carmel-by-the-Sea and 'round-about the Monterey peninsular, with the evening and overnight at the superb Del Monte Hotel.

Sunday the adventure continues as we wheel southward in balloon-tired luxury over the El Camino Real, the historic highway laid out by the Spanish padres. We stop for lunch at Santa Maria, an interesting tavern in an interesting community; afterwards down through Pismo Beach, the Arroyo Grande, Las Cruces, and so to Santa Barbara, one of the most delightful cities among the many in California. While here we stop at the Santa Barbara Biltmore Hotel.

Monday morning is left open—time to visit the ancient Mission and the alluring shops. And in the afternoon again motoring pleasantly through the

chain of lovely coast towns—Montecito, Ventura, Malibu Beach and Santa Monica; entering Los Angeles over Wilshire Boulevard.

Ar Los Angeles 4.30 PM Motor Monday

Three Days in Los Angeles

The Los Angeles Biltmore is our headquarters until Friday morning.

The cost of this tour does not include meals while in Los Angeles, however, it includes lodging, auto trip as shown.

Tuesday we make an all-day trip including Pasadena, Universal Movie Studio, with opportunity for luncheon with the stars, Hollywood and Beverly Hills.

Wednesday and Thursday open for your pleasure.

Friday by train to Wilmington, then by boat to Avalon on Catalina Island, where we spend the afternoon and overnight at the St. Catherine Hotel. Trip in glass-bottomed boat to view submarine gardens this afternoon.

Returning to the mainland Saturday morning, we are met by motors and wheel away through Long Beach, the oil fields, La Jolla and into San Diego where we put up at the U. S. Grant Hotel.

Sunday includes an auto trip around San Diego and to Agua Caliente, however there is plenty of time for visits to the California Pacific International Exposition, San Diego's "World's Fair."

Lv San Diego 8.30 AM Motor Monday

Northward along the coast; through La Jolla, Delmar and Santa Ana; by motor.

Lv Los Angeles 12.15 PM Santa Fe Monday

Ar Grand Canyon 7.45 AM Santa Fe Tuesday

All day viewing the marvels of the great gorge of the Colorado River. Sensational scenery every moment; motoring along the south rim to Hermit's Rest in the morning; afoot to various vantage points of your own choice in the afternoon. All meals here at the illustrious El Tovar.

Ar Lamy 5.00 PM Santa Fe Wednesday

We motor up to Santa Fe for overnight at La Fonda—a hotel so distinctive that the pause here constitutes a real high spot of the tour. Thursday morning we visit the Santa Clara pueblo where the Indians turn out their famous black pottery. Subsequently we motor up to wonder at the prehistoric ruins of the cliff dwellers at Puye—something to think about. Returning we stop at the San Ildefonso pueblo on the way to Santa Fe and Lamy.

Ar Kansas City 5.00 PM Santa Fe Friday

Ar St. Louis 7.12 AM Burlington Saturday

Ar Chicago (Dearborn Station) 6.45 AM Santa Fe Saturday

COST OF COMPLETE TOUR

	From CHICAGO		From ST. LOUIS	
	Without Railroad Ticket	With Railroad Ticket	Without Railroad Ticket	With Railroad Ticket
Two persons in a lower berth (each)	\$210.85	\$304.45	\$209.10	\$298.20
One person in a lower berth	228.10	321.70	225.60	314.70
One person in an upper berth	221.20	314.80	219.00	308.10

EXTRA CHARGE FOR SINGLE ROOM AT HOTELS \$10.00.

The costs shown above "without rail ticket" are for the benefit of passengers coming from the East or South with through rail tickets.

**TOURS LEAVE CHICAGO
AND ST. LOUIS**

Tour P-1 June 30
Tour P-2 July 7
Tour P-3 July 14

Tour P-4 July 28
Tour P-5 August 4

Hawaiian Islands

Tour HN — 25 Days

And here is real temptation for those fortunate enough to have a bit more than average vacation time at their disposal. A wonder tour half way across the Pacific to that group of enchanted isles—Hawaii.

Here is a travel plan involving ten days of cruising over summer seas, and eight joyous days in the Hawaiian Islands . . . rest, recreation, adventure and sight-seeing on a magnificent scale.

Lv Chicago	10.30 AM	Burlington	Sun. July 21
Lv St. Louis	2.15 PM	Burlington	Sun. July 21
Ar Denver	1.15 PM	Burlington	Mon. July 22
We make a motor trip around Denver during layover of trains.			
Lv Denver	3.30 PM	D. & R. G. W.	Mon. July 22

Through the Colorado Rockies via a new scenic route that utilizes the Moffat Tunnel.

Ar Salt Lake City	7.30 AM	D. & R. G. W.	Tue. July 23
Sight-seeing by motor in this city of the Mormons between trains.			

Lv Salt Lake City	9.30 AM	Union Pacific	Tue. July 23
Ar Los Angeles	8.30 AM	Union Pacific	Wed. July 24

A day in Los Angeles with no particular plans except lunch at the Los Angeles Biltmore Hotel. Chance for last-minute shopping; then gaily down to the harbor . . .

Lv Los Angeles Harbor	10.00 PM	S. S. Mariposa	Wed. July 24
---------------------------------	----------	--------------------------	--------------

And now cruising over summer seas to the Magic Isles, Paradise of the Pacific. The days . . . leisurely, eventful, happy days, drift by as you enjoy life aboard the great floating palace.

Ar Honolulu	9.00 AM	S. S. Mariposa	Mon. July 29
-----------------------	---------	--------------------------	--------------

Honolulu! Leis, bronzed natives, surf boards, strumming ukes . . . lights . . . gaiety . . . summer . . . youth. We put up at the Moana Hotel on the beach at Waikiki and the next five days are a succession of enjoyable experiences and magnificent sight-seeing. We motor around; visit pineapple and sugar plantations . . . swim in the surf . . . dance in the romantic cosmopolitan atmosphere . . . enjoy life in the most delightful of spring climates.

Friday afternoon we sail away on another boat to Hilo for two exciting days at the great volcano of Kilauea and motoring through Hawaiian National Park, stopping overnight Saturday at interesting Kona Inn. Motoring again Sunday—through forests and over highways edged with ferns as big as trees; over the lava flows, seeing the ranches, water-falls, and visiting an old historic native village.

We leave Hilo Sunday evening, arriving in Honolulu Monday morning for another day before sailing away for California on a different ship.

Lv Honolulu	4.00 PM	S. S. Monterey	Mon. Aug. 5
-----------------------	---------	--------------------------	-------------

After four more pleasant days at sea—bathing in the outdoor Roman pool, deck games, concerts, radio cinema, dancing beneath the stars to haunting melodies . . . nights of matchless slumber—we sight the California coast Saturday morning.

Ar Los Angeles	11.00 AM	S. S. Monterey	Sat. Aug. 10
--------------------------	----------	--------------------------	--------------

The boat lies in Los Angeles harbor 23 hours with meals and berth provided if you wish. You can go up to Los Angeles for the afternoon; return to the ship for dinner and overnight.



Diamond Head and the beach at Waikiki

Lv Los Angeles.....10.00 AM S. S. Monterey Sun. Aug. 11
 Ar San Francisco..... 9.00 AM S. S. Monterey Mon. Aug. 12

A full day in San Francisco with no set program beyond lunch at the Hotel Sir Francis Drake.

Lv San Francisco..... 7.00 PM Western Pacific..... Mon. Aug. 12
 Homeward bound through Salt Lake City and the Colorado Rockies.

Ar Chicago..... 7.15 PM Burlington..... Thu. Aug. 15
 Ar St. Louis..... 5.45 PM Burlington..... Thu. Aug. 15

Quite a number of return schedules—under escort—offer themselves in connection with our other tours as follows:

At Los Angeles you may join either Tour O or P returning via the Grand Canyon or Tours N or NF via Yosemite, San Francisco and the Pacific Northwest.

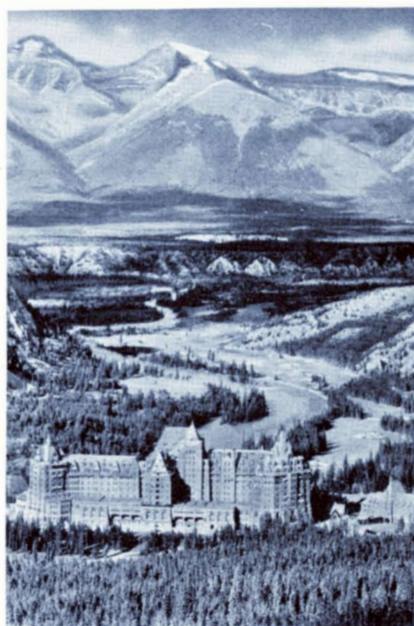
At San Francisco you may join the N or NF Tour returning via the Pacific Northwest and the American or Canadian Rockies. An alternate is to join Tour O or P including Yosemite and Southern California, and the Grand Canyon.

The cost involved in any of these alternative plans will be gladly quoted upon request.

COST OF THE COMPLETE HAWAIIAN TOUR

Including all privileges of Tour as outlined above; Bed in inside stateroom on "D" Deck; all meals; deck chair and steamer rug.	From CHICAGO		From ST. LOUIS	
	Without Railroad Ticket	With Railroad Ticket	Without Railroad Ticket	With Railroad Ticket
Two persons in a lower berth (each).....	\$398.55	\$484.55	\$395.55	\$477.05
One person in a lower berth.....	414.30	500.30	410.55	492.05
One person in an upper berth.....	408.00	494.00	404.55	486.05
Two persons in a compartment (each).....	427.30	513.30	422.55	504.05
Two persons in a drawing-room (each).....	438.80	524.80	438.80	520.30

Superior accommodations are available, the additional cost varying according to location.
 Single room (at hotels in Honolulu) \$5.00 additional.



*Shipboard diversion
on the way to Alaska*

*Banff Springs Hotel
in the Canadian Rockies*

The great Taku Glacier comes down to the sea

Alaska (Seward) Tour R —

21 Days Pacific Northwest » Alaska » returning through the American Rockies
27 Days Pacific Northwest » Alaska » returning through the Canadian Rockies

Burlington Escort accompanies these tours to and from Seattle.

Lv Chicago.....	*10.30 PM or #10.45 PM	Burlington.....	Sunday
Lv St. Louis.....	2.15 PM	Burlington.....	Sunday
Lv St. Paul.....	* 8.35 AM or # 8.50 AM	Nor. Pac. or Great Nor.....	Monday
Lv Minneapolis.....	* 8.55 AM or # 9.10 AM	Nor. Pac. or Great Nor.....	Monday

*Tours 1, 3 and 5 on North Coast Limited via Northern Pacific

#Tours 2, 4 and 6 on Empire Builder via Great Northern

Either route takes us through the Minnesota Lake Country, the endless wheat fields of North Dakota, and through the most striking scenic parts of the Montana Rockies during hours of daylight.

Ar Portland.....	7.35 AM	S. P. & S.....	Wednesday
------------------	---------	----------------	-----------

We spend an eventful day here motoring this morning over the spectacular Columbia River Highway.

Lv Portland.....	4.20 PM	Great Northern.....	Wednesday
Ar Tacoma.....	8.05 PM	Great Northern.....	Wednesday

Overnight at the Tacoma Hotel. Motoring Thursday morning to Rainier National Park for the afternoon and overnight at the Paradise Inn situated in a flower-filled valley at the base of the glorious white-capped peak. Friday morning we motor down to Seattle for more sight-seeing and overnight at the Olympic Hotel.

Lv Seattle.....	9.00 AM	Alaska Steamship Co.....	Saturday
-----------------	---------	--------------------------	----------

Here begins a wonderful trip to Alaska aboard a brave white ship. Twelve glorious days ahead, cruising among the lovely isles, up through the placid waters of the "Inside Passage."

Our first stop is at Ketchikan on Monday where we have plenty of time to go ashore to see the totem poles and visit the salmon canneries. Late in the afternoon we leave for Wrangell, where we make a short stop.

Tuesday we are in Juneau, the capital of Alaska where we have time enough to visit the museum or motor to Auk Lake and Mendenhall Glacier. We get our only touch of open sea en route to Cordova, from which point we make a side trip by rail to Miles and Child's glaciers, on the Copper River. Thursday morning we pause for a thrilling close-up of the mighty Columbia Glacier—300 feet high, a mile wide, 90 miles long, and alive and moving. Great thousand-ton fragments of ice are continually breaking off the glacier's facade and dropping with a resounding crash to float about in the sea as small icebergs. A short stop is also made today at Valdez.

We reach Seward, our turning point, Friday and during the lay-over of the boat, there is usually enough time for an interesting side trip by train on the Alaska Railroad via Kenai Lake, the shaft-like Placer River Canyon to Spencer Glacier, returning to Seward in time to sail the same evening.

Returning we follow the same route and make the same stops as north-bound. Our ship is due in Seattle Thursday morning.

Returning eastward passengers have a choice of two routes—A or B, as follows:

"A" Through the American Rockies.

Lv Seattle.....	*8.30 PM or #9.30 PM		Thursday
-----------------	----------------------	--	----------

*Tours 1, 3 and 5 on the North Coast Limited via Northern Pacific

#Tours 2, 4 and 6 on the Empire Builder on the Great Northern

Ar St. Paul.....10.45 PM or 10.30 PM Nor. Pac. or Great Nor....Saturday
 Ar Chicago.....9.00 AM Burlington.....Sunday
 Ar St. Louis.....6.00 PMSunday

"B" Through the Canadian Rockies.

Meals and lodging at the Olympic Hotel are included in the cost of the tour after arrival of the boat on Thursday until you leave Seattle on Saturday as follows:

Lv Seattle.....9.00 AM Canadian Pacific S. S.....Saturday
 Ar Victoria.....12.45 PM Canadian Pacific S. S.....Saturday

A delightful afternoon of sight-seeing by motor 'roundabout Victoria, quaint, English capital of British Columbia. Overnight at the outstanding Empress Hotel and all morning tomorrow to continue our sight-seeing.

Lv Victoria.....1.45 PM Canadian Pacific S. S.....Sunday
 Ar Vancouver.....5.45 PM Canadian Pacific S. S.....Sunday

Here we put up at the Vancouver Hotel and have a very interesting motor trip Monday morning embracing Stanley Park, Shaughnessy Heights and other points of outstanding attraction.

Lv Vancouver.....2.45 PM Canadian Pacific.....Monday

In an open-top observation car through the Canyon of the Fraser River and on up into the Canadian Rockies.

Ar Field.....10.45 AM Canadian Pacific.....Tuesday

Motoring through the glorious Canadian Rockies. Tuesday morning, we drive up to Emerald Lake for luncheon and afterwards wheel through Kicking Horse Canyon and Yoho Valley to Lake Louise for an afternoon and overnight at the Chateau Lake Louise. All Wednesday morning for sight-seeing at this world-famous resort before motoring in the afternoon over to Banff for a day including overnight accommodations at the Banff Springs Hotel.

Lv Banff.....5.00 PM Canadian Pacific.....Thursday
 Ar Minneapolis.....6.55 AM Soo Line.....Saturday
 Ar St. Paul.....7.35 AM Soo Line.....Saturday
 Ar Chicago.....7.10 PM Burlington.....Saturday
 Ar St. Louis.....7.40 AMSunday

COST OF COMPLETE TOUR

Including all necessary expenses such as Pullman, lodging (two persons to a room with bath), all meals and auto trips as shown in itinerary.	From CHICAGO		#From ST. LOUIS	
	Without Railroad Ticket	With Railroad Ticket	Without Railroad Ticket	With Railroad Ticket
"A" American Tour				
Two persons in a lower berth (each).....	\$209.93	\$295.93	\$210.80	\$294.55
One person in a lower berth.....	226.30	312.30	226.80	310.55
One person in an upper berth.....	219.75	305.75	220.40	304.15
"B" Canadian Tour				
Two persons in a lower berth (each).....	267.43	353.43	268.30	352.05
One person in a lower berth.....	283.80	369.80	284.30	368.05
One person in an upper berth.....	277.25	363.25	277.90	361.65

#No meals or Pullman included Chicago to St. Louis.

The costs shown above "without rail ticket" are for the benefit of passengers coming from the East or South with through rail tickets.

Extra charge for single room with bath at hotels: \$7.25 for Canadian Tour; \$2.00 for American Tour.

Costs are quoted for berths in minimum rate stateroom on boat. Superior accommodations are offered at rates \$13.00 and \$25.50 higher per person.

TOURS LEAVE Tour R-1 June 30 Tour R-3 July 14 Tour R-5 July 28
CHICAGO AND ST. LOUIS Tour R-2 July 7 Tour R-4 July 21 Tour R-6 Aug. 4

Alaska (Skagway and Sitka)

Tour S — 17 Days

A transcontinental rail trip to Seattle via the cool northern route on one of the best trains in all the West. From Seattle to Alaska and return we ride on the S.S. Aleutian which is one of the newest and the largest ship in the Alaskan service.

		Tours S-2 and S-4	Tours S-1 and S-3
Lv Chicago	*10.30 PM or #10.45 PM	Burlington..... Monday	Thursday
Lv St. Louis on any convenient train to Chicago.....		Monday	Thursday
Lv St. Paul	*8.35 AM or #8.50 AM	Tuesday	Friday
Lv Minneapolis.....	*8.50 AM or #9.10 AM	Tuesday	Friday

*Tours S-2 and S-4 travel on the "North Coast Limited" of the Northern Pacific.

#Tours S-1 and S-3 travel on the "Empire Builder" of the Great Northern.

Up through the Minnesota Lakes country; through the vast ranch and grain producing country of North Dakota; across the domain of the cattle barons in eastern Montana; then range after range of the Rocky Mountains and later through the Cascades—across the continent to Seattle and Puget Sound.

Ar Seattle..... 8.30 AM Nor. Pac. or 8.00 AM Gt. Nor. Thursday Sunday

We go to the fine Olympic Hotel for our last day on dry land for some time. We motor pleasantly and profitably around this morning to see interesting sights in this great Pacific Northwest metropolis, with an open afternoon to do as you please.

Overnight at the Olympic Hotel and after breakfast down to the pier to board a trim white ship, and presently it's "Anchors Aweigh."

Lv Seattle..... 9.00 AM S. S. Aleutian..... Friday Monday

And now four delightful, never-to-be-forgotten days cruising over the summer seas of the "Inside Passage" which bears the same relation to ocean travel as the "Veil of Kashmir" bears to land travel. We have shore leave at Ketchikan, and at Juneau, the modern capital of Alaska. We cruise within close range of the thrilling Taku Glacier which starts far inland and extends down to the Sea. A succession of delightfully lazy days and enchanting nights at sea—northward to the "Top of the World."

Ar Skagway..... 7.00 AM S. S. Aleutian..... Tuesday Friday

UP INTO THE YUKON

A railroad train seems quite a curiosity way up here, yet there it is—waiting at the pier. It is the White Pass & Yukon Route which takes us in supreme comfort over the grim White Pass of gold rush fame in Klondike days. It takes us across the International Boundary into the Canadian province to Lake Bennett where we have luncheon, returning to our ship late in the afternoon.

		Tours S-2 and S-4	Tours S-1 and S-3
Lv Skagway.....	7.00 PM S. S. Aleutian.....	Tuesday	Friday

Back through the "Inside Passage" (although over a different course) reaching Sitka in the afternoon. We have several hours of shore leave in this quaint old city which was the early Russian capital of Alaska. Fine examples of totem poles here; ancient St. Michael's church with its gold altar cloth; Siwash Indians, ivory carvings, golden ikons—native basketry.

Then continuing southward through the "Inside Passage;" through the Seymour Narrows—more delightful days and nights aboard ship; a grand mask ball upon the last night.

Ar Seattle.....	7.00 AM S. S. Aleutian.....	Sunday	Wednesday
Lv Seattle.....	8.00 AM Great Northern.....	Sunday	Wednesday
Ar Vancouver.....	2.00 PM Great Northern.....	Sunday	Wednesday

During an afternoon stopover here we enjoy a motor trip that includes Stanley Park, Shaughnessy Heights, the foreign quarter and other points of interest in this big Canadian city.

Lv Vancouver.....	6.30 PM Canadian Pacific.....	Sunday	Wednesday
-------------------	-------------------------------	--------	-----------

Morning finds us deep in the Canadian Rockies. In railroad cars without any top we have an unusual opportunity to view the startling beauty of the mountain world in all its staggering immensity.

Ar Lake Louise.....	3.00 PM Canadian Pacific.....	Monday	Thursday
---------------------	-------------------------------	--------	----------

We go to the world-famous Chateau Lake Louise for evening and overnight and late the next morning motor through the mountains over to Banff and another wonderful hostelry, the Banff Springs Hotel for another afternoon of eye-filling mountain masses.

Lv Banff.....	5.00 PM Canadian Pacific.....	Tuesday	Friday
Ar Minneapolis.....	6.55 AM Soo Line.....	Thursday	Sunday
Ar St. Paul.....	7.35 AM Soo Line.....	Thursday	Sunday
Ar Chicago.....	7.10 PM Burlington.....	Thursday	Sunday

COST OF COMPLETE TOURS

Including all necessary expenses such as Pullman, lodging (two persons to a room with bath), all meals and auto trips as shown in itinerary.	From CHICAGO		From ST. LOUIS	
	Without Railroad Ticket	With Railroad Ticket	Without Railroad Ticket	With Railroad Ticket
Two persons in a lower berth (each).....	\$169.30	\$255.30	\$169.30	\$255.30
One person in a lower berth.....	185.05	271.05	185.05	271.05
One person in an upper berth.....	178.75	264.75	178.75	264.75

Costs are quoted for berths in minimum rate stateroom on boat. Superior accommodations are offered at rates \$9.00 to \$35.00 higher per person.

#No meals or Pullman included between Chicago and St. Louis.

EXTRA CHARGE FOR SINGLE ROOMS AT HOTELS: \$2.00.

The costs shown above "without rail ticket" are for the benefit of passengers coming from the East or South with through rail tickets.

TOURS LEAVE CHICAGO AND ST. LOUIS

Tour S-1 July 4
Tour S-2 July 15

Tour S-3 July 25
Tour S-4 August 5

Alaska (Skagway » West Taku Arm)

Tour T — 20 Days

Burlington Escort accompanies these tours to and from Vancouver.

Lv Chicago.....	*10.30 PM or #10.45 PM	Burlington.....	Sunday
Lv St. Louis.....	2.15 PM	Burlington.....	Sunday
Lv St. Paul.....	* 8.50 AM or # 8.50 AM	Nor. Pac. or Great Nor.....	Monday
Lv Minneapolis.....	* 9.10 AM or # 9.25 AM		Monday

*Tours T1-3-5-7 on North Coast Limited via the Northern Pacific

#Tours T2-4-6 on Empire Builder via the Great Northern

Through Minnesota and North Dakota on Monday; then over the main range of the Montana Rockies on Tuesday, with exciting sight-seeing from the car window mile after mile through the colorful northwest.

Ar Portland.....	7.35 AM	S. P. & S.....	Wednesday
------------------	---------	----------------	-----------

An eventful morning of motor sight-seeing including the wonderful Columbia River Highway. Breakfast and luncheon at Multnomah Hotel.

Lv Portland.....	4.20 PM	Great Northern.....	Wednesday
Ar Tacoma.....	8.05 PM	Great Northern.....	Wednesday

Overnight at the Tacoma Hotel with a rare travel treat planned for tomorrow—motoring up to Rainier National Park for an afternoon which, as well as not, can be spent exploring around the great Paradise Glacier. If you don't feel ambitious, your whole time here is well spent wading knee-deep in wild flowers or gazing upon the most beautiful mountain peak in America. Overnight at Paradise Inn, a most inviting place.

Friday morning we motor down to Seattle. More motoring in the afternoon and excellent overnight accommodations at the Olympic Hotel.

Lv Seattle.....	9.00 AM	Canadian Pacific S. S.....	Saturday
-----------------	---------	----------------------------	----------

While our ship rides briefly at anchor in Victoria harbor we have a bit of shore leave in this "so different" Canadian metropolis—time enough at least for a nice little sight-seeing tour by motor. Then back to the boat and an afternoon of cruising among the San Juan Islands over to the mainland at Vancouver.

Ar Vancouver.....	5.45 PM	Canadian Pacific S. S.....	Saturday
-------------------	---------	----------------------------	----------

Here we transfer to another ship and after dinner on board there is a little shore leave before sailing time.

Lv Vancouver.....	9.00 PM	Canadian Pacific S. S.....	Saturday
-------------------	---------	----------------------------	----------

An enchanting nine-day trip up through the "Inside Passage" to Alaska—an incomparable adventure in rest, relaxation and scenic significance. Going up we stop at Alert Bay, Prince Rupert, Ketchikan, Wrangell, Taku Glacier, Juneau and Skagway—all names to conjure with. On arrival at Skagway we make a train trip inland—up over dread White Pass which took its toll from thousands of gold-crazed miners Klondike-bound; now we're in Yukon territory; at Carcross we board another boat and spend the next 24 hours cruising upon Tagish Lake to West Taku arm and back—with mountains of staggering immensity rising about the little ribbon of lake. Back to Skagway without an adjective left in your vocabulary; aboard ship and away again, southbound for a return engagement through the "Inside Passage."



Ar Vancouver 8.00 AM Canadian Pacific S. S. Monday

Motor sight-seeing here this morning.

Lv Vancouver 2.45 PM Canadian Pacific..... Monday

An open-top observation car on the rear of our train provides ideal means by which to enjoy the afternoon train ride as we climb into the Canadian Rockies.

Ar Field..... 10.45 AM Canadian Pacific..... Tuesday

Motors meet us upon arrival and whirl us away to Emerald Lake—a mountain gem. After lunch we motor through Kicking Horse Canyon and Yoho Valley to Lake Louise for a full day including overnight at the wonderful Chateau Lake Louise. We leave here after lunch Wednesday and motor over to Banff for evening, overnight and next day at the Banff Springs Hotel—hiking, bathing in the mineral water pools, exploring, golf and enjoying this superb hotel.

Lv Banff..... 5.00 PM Canadian Pacific..... Thursday

Ar Minneapolis 6.55 AM Soo Line Saturday

Ar St. Paul..... 7.25 AM Soo Line..... Saturday

Ar Chicago..... 7.10 PM Burlington..... Saturday

Ar St. Louis..... 7.40 AM Sunday

COST OF COMPLETE TOURS

Including all necessary expenses such as Pullman, lodging (two persons to a room with bath), all meals, and auto trips as shown in itinerary.	From CHICAGO		#From ST. LOUIS	
	Without Railroad Ticket	With Railroad Ticket	Without Railroad Ticket	With Railroad Ticket
Two persons in a lower berth (each)	\$229.88	\$315.88	\$230.75	\$314.50
One person in a lower berth.....	246.25	332.25	246.75	330.50
One person in an upper berth.....	239.70	325.70	240.55	324.10

Costs are quoted for berths in minimum rate stateroom on boat. Superior accommodations are offered at rates \$9.00 to \$35.00 higher per person.

#No meals or Pullman included between Chicago and St. Louis.

EXTRA CHARGE FOR SINGLE ROOMS AT HOTELS: \$4.25.

The costs shown above "without rail ticket" are for the benefit of passengers coming from the East or South with through rail tickets.

TOURS LEAVE CHICAGO AND ST. LOUIS

Tour T-1 June 30

Tour T-2 July 7

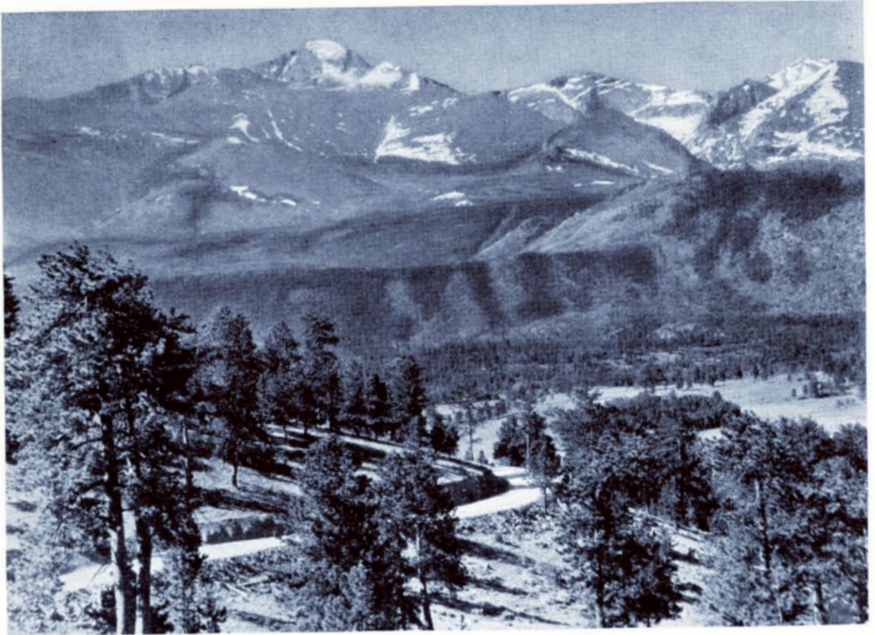
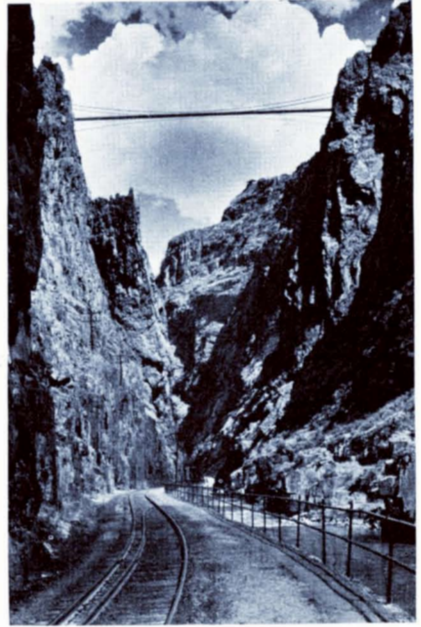
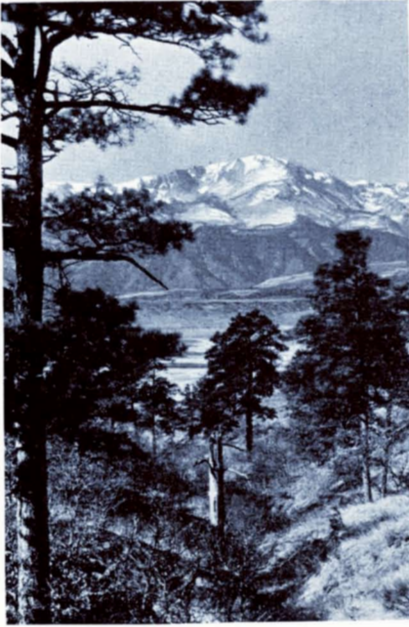
Tour T-3 July 14

Tour T-4 July 21

Tour T-5 July 28

Tour T-6 August 4

Tour T-7 August 11



SEEING THE COLORADO ROCKIES

*PIKES PEAK as seen
from Colorado Springs*

*THE ROYAL GORGE
at the Hanging Bridge*

The Trail Ridge Road across the main range in Rocky Mountain National Park

Colorado Bargain Tours

Lv Chicago and St. Louis every Sunday from June 23 to Sept. 1, inc.

Tour No. 1—8 Days } *Including Denver, Colorado Springs,
Pikes Peak, Rocky Mountain (Estes)
National Park.*
Tour No. 3—15 Days

Lv Chicago.....	10.30 AM	Burlington.....	Sunday
Lv St. Louis.....	2.15 PM	Burlington.....	Sunday
Ar Denver.....	1.15 PM	Burlington.....	Monday

Afternoon motor trip around Denver. Overnight at the Shirley-Savoy Hotel. Colorado Springs for a full day with motor trip through Garden of the Gods and to top of Pikes Peak. Overnight at the famous Broadmoor Hotel, thence to Estes Park Chalets for over two days. Grand Lake via Trail Ridge Road can be included for \$8.25 additional.

Lv Denver.....	5.00 PM	Burlington.....	Saturday
Ar Chicago.....	7.15 PM	Burlington.....	Sunday
Ar St. Louis.....	5.45 PM	Burlington.....	Sunday

Cost as low as

	From CHICAGO		From ST. LOUIS	
	Tour No. 1	Tour No. 3	Tour No. 1	Tour No. 3
In sleeper (two persons in lower each).....	\$87.55	\$122.55	\$81.20	\$116.20
In chair car or coach.....	73.60	108.60	69.38	104.38

Lv Chicago and St. Louis every Sunday from June 23 to Sept. 1, inc.

Tour No. 2—8 Days } *Including Denver, Colorado Springs, Pikes Peak, Royal Gorge,
Tennessee Pass, Glenwood Springs, Dolsero Cut-off, Grand Lake,
Trail Ridge Road, Rocky Mountain National (Estes) Park.*
Tour No. 4—15 Days

Lv Chicago.....	10.30 AM	Burlington.....	Sunday
Lv St. Louis.....	2.15 PM	Burlington.....	Sunday
Ar Denver.....	1.15 PM	Burlington.....	Monday

Motoring around Denver this afternoon. Tuesday in Colorado Springs with a motor trip via Garden of the Gods to Pikes Peak. Wednesday on the train via Royal Gorge and the main range of the Rockies over the Continental Divide at Tennessee Pass. Overnight at the Colorado Hotel in Glenwood Springs.

Thursday we follow the Colorado River along the new Dotsero Cut-off. Board motors at Granby, reaching Grand Lake in time for lunch. In the afternoon we travel over the wonderful Trail Ridge Road reaching Estes Park for dinner. We remain here until Saturday noon, then to Denver and our train.

Lv Denver.....	5.00 PM	Burlington.....	Saturday
Ar Chicago.....	7.15 PM	Burlington.....	Sunday
Ar St. Louis.....	5.45 PM	Burlington.....	Sunday

Cost as low as

	From CHICAGO		From ST. LOUIS	
	Tour No. 3	Tour No. 4	Tour No. 3	Tour No. 4
In sleeper (two persons in lower each).....	\$104.95	\$139.95	\$98.60	\$133.60
In chair car or coach.....	87.00	122.00	82.75	117.75

Special folder gives more particulars about these tours, as well as other tours to Colorado, and 7-Day Tours to the Black Hills.

Combination Tours

To passengers who have more time to devote to the unlimited attractions of the West, we suggest combinations of two or more of the tours described herein. The feasibility of such combinations is one of the important advantages of Burlington Escorted Tours, as the illustrations below will show.

YELLOWSTONE—GLACIER—CANADIAN ROCKIES—18 Days

Leave Chicago Tuesdays
June 25, July 2-9-16-23-30, August 6-13

Including Old Faithful, Grand Canyon and the wonderful Cody Road in Yellowstone, and Lake McDonald, Logan Pass, Going-to-the-Sun, Many Glacier and Waterton Lakes in Glacier, in the Canadian Rockies covering the Rawhide Trail, Radium Hot Springs, Emerald Lake and two nights at the Chateau Lake Louise and a full day at Banff Springs Hotel.

Passengers travel with Tour "C" to Glacier Park joining Tour "E" there for the trip through Glacier Park and Canadian Rockies.

Cost for one person in a lower berth via Lodges in Yellowstone, from Chicago \$284.45; from St. Louis \$285.18.

BLACK HILLS—YELLOWSTONE—GLACIER—15 Days

Leave Chicago and St. Louis Saturdays
June 29, July 6-13-20-27, August 3-10-17

Including Sylvan Lake, Mt. Rushmore, Rapid City, Deadwood and Lead in the Black Hills. Old Faithful, Grand Canyon and the Cody Road in Yellowstone. Two Medicine, Many Glacier, Going-to-the-Sun, Logan Pass and Lake McDonald in Glacier.

Passengers travel with Tour "L" through Black Hills and Yellowstone and with Tour "C" through Glacier. Cost for one person in a lower berth (via Lodges in Yellowstone) from Chicago \$217.50; from St. Louis \$218.25.

GLACIER—YELLOWSTONE—COLORADO—19 Days

Leave Chicago and St. Louis Sundays
June 23-30, July 7-14-21-28, Aug. 4-11

Including Two Medicine, Many Glacier, Going-to-the-Sun, Logan Pass and Lake McDonald in Glacier Park. Old Faithful, Grand Canyon and the Cody Road in Yellowstone, and in Colorado, the Big Thompson Canyon, Estes Park, Trail Ridge Road and Grand Lake in Rocky Mt. National Park and Glenwood Springs, Tennessee Pass, Royal Gorge and Colorado Springs on the D. & R. G. W. Ry.

Passengers travel with Tour "A" through Glacier and Yellowstone and with Tour "B" through Colorado. Cost for one person in a lower berth (via Lodges in Yellowstone) from Chicago \$265.40; from St. Louis \$276.05.

GLACIER—PACIFIC NORTHWEST—CANADIAN ROCKIES—20 Days

Leave Chicago and St. Louis Sundays
June 30, July 14-28, August 11

Including a week in Glacier Park—afternoon and night at Glacier Park Hotel; Two Medicine Wednesday noon until Sunday morning Many Glacier Hotel; Sunday afternoon and night at Going-to-the-Sun Chalets; Monday noon until Tuesday afternoon at Lake McDonald Hotel, and a day each at Portland, Rainier National Park, Seattle, Victoria, Vancouver, Lake Louise and Banff.

Passengers travel with Tour "A" to Many Glacier in Glacier Park, spending four additional days there, joining Tour "F" at Belton.

Cost for one person in a lower berth, from Chicago \$289.35; from St. Louis \$289.60.

YELLOWSTONE—PACIFIC NORTHWEST—CANADIAN ROCKIES—18 Days

**Leave Chicago Tuesdays
June 25, July 9-23, August 6**

Including Old Faithful, Grand Canyon and the Cody Road in Yellowstone, and a day each at Portland, Rainier National Park, Seattle, Victoria, Vancouver, Lake Louise and Banff.

Passengers travel with Tour "C" including an extra day at Grand Canyon in Yellowstone joining Tour "F" at Billings.

Cost for one person in a lower berth via Lodges in Yellowstone, from Chicago \$280.80; from St. Louis \$288.10.

YELLOWSTONE—COLORADO—CALIFORNIA—21 Days

**Leave Chicago and St. Louis Sundays
June 23-30, July 7-14-21-28, August 4**

Including Old Faithful, Grand Canyon and Cody Road in Yellowstone; one night at Cody Inn, a day at Estes Park Chalets, through the Moffat Tunnel under the Rocky Mountains, Salt Lake City, San Francisco, Yosemite, Los Angeles, San Diego, and the Grand Canyon.

Passengers travel with Tour "D" through Yellowstone and to Colorado, joining Tour "O" at Denver for trip to California.

Cost for one person in a lower berth via Lodges in Yellowstone, from Chicago \$301.05; from St. Louis \$295.55.

YELLOWSTONE—CALIFORNIA—PACIFIC NORTHWEST—21 Days

**Leave Chicago and St. Louis Sundays
June 23-30, July 7-14-21-28, August 4**

Including Old Faithful, Grand Canyon and the Cody Road in Yellowstone; one night at Cody Inn, a day at Estes Park Chalets, through the Moffat Tunnel under the Rocky Mountains, Salt Lake City, Los Angeles, Yosemite, San Francisco, Crater Lake, Portland, Columbia River Highway and Seattle.

Passengers travel with Tour "D" through Yellowstone and to Colorado, joining Tour "N" at Denver.

Cost for one person in a lower berth via Lodges in Yellowstone, from Chicago \$300.75; from St. Louis \$299.35.

YELLOWSTONE—CALIFORNIA—CANADIAN ROCKIES—26 Days

**Leave Chicago and St. Louis Sundays
June 23-30, July 7-14-21-28, August 4**

Including Old Faithful, Grand Canyon and the Cody Road in Yellowstone; Cody Inn; a day at Estes Park Chalets; through the Moffat Tunnel under the Rocky Mountains; Salt Lake City; Los Angeles; Yosemite; San Francisco; Crater Lake; Portland, Columbia River Highway, Tacoma, Rainier National Park, Seattle; Victoria, Vancouver; Lake Louise and Banff.

Passengers travel with tour "D" through Yellowstone and to Colorado, joining tour "NF" at Denver.

Cost for one person in a lower berth via Lodges in Yellowstone, from Chicago \$372.25; from St. Louis \$371.05.

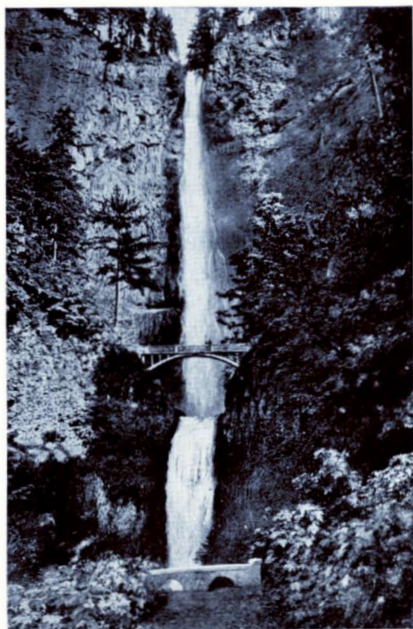
YELLOWSTONE—CALIFORNIA WONDER TOUR—26 Days

**Leave Chicago and St. Louis Sundays
June 23-30, July 7-21-28**

Including Old Faithful, Grand Canyon and the Cody Road in Yellowstone, day at Estes Park; Salt Lake, San Francisco, Yosemite, three days' motor trip including Del Monte and Santa Barbara, Los Angeles, Catalina, San Diego, Grand Canyon and the Indian-detour.

Passengers travel with tour "D" through Yellowstone and Colorado, joining tour "P" at Denver.

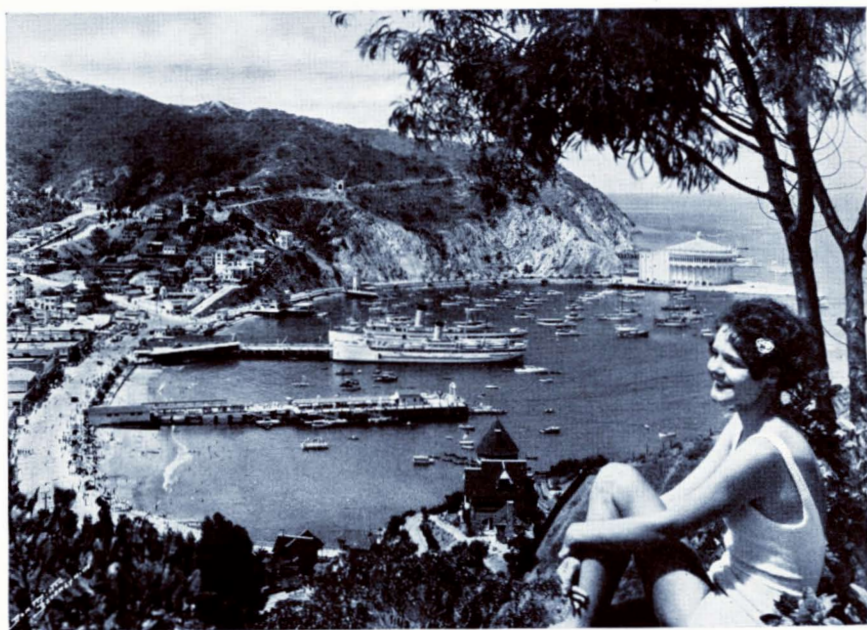
Cost for one person in a lower berth via Lodges in Yellowstone, from Chicago \$398.70, from St. Louis \$392.70.



Multnomah Falls—Columbia River Highway



Through the main range of the Montana Rockies



Catalina Island—Off The California Coast

GENERAL INFORMATION

COST OF TOURS

The cost of each "Burlington Escorted Tour" covers all necessary expenses en route—Standard Pullman accommodations, motor trips, hotel accommodations as shown under each tour, meals and the tours of the national parks (but does not include tips, which are considered purely personal).

PURCHASE THROUGH RAIL TICKET

Passengers coming from points east or south of Chicago or St. Louis should purchase through first class summer excursion ticket from their home station and in this way obtain the full benefit of the low round-trip railroad fare. Your home agent will be glad to arrange your reservation and issue tickets.

COST DEPENDS UPON PULLMAN SPACE

The cost of a tour varies according to Pullman accommodations used. The individual cost is less if two persons occupy one berth; or if two or more persons occupy one compartment or drawing-room. Specific rates are quoted for berths (upper and lower). Quotations involving compartments or drawing-rooms or single occupancy of sections will be given upon request.

COST FROM EASTERN POINTS

Rates from Eastern points will be quoted gladly by any of the representatives listed on page 65.

HOW TO JOIN TOURS

Bookings for tours should be arranged through J. G. Delaplaine, Manager, Burlington Escorted Tours, 547 West Jackson Blvd., Chicago, or through any Burlington Route, Great Northern or Northern Pacific representative all of whom are authorized agents for these tours and are prepared to render every assistance in the way of supplying detailed information, making reservations and definitely booking passengers. We reserve the right to decline any application.

Final payment must be made at least seven days before tour leaves.

Bookings are not made for holders of free railroad transportation except by special arrangement.

YOUR APPAREL AND BAGGAGE

While these are summer journeys, the nights in the mountains and the cool, invigorating auto rides make desirable medium-weight wraps, sweater coats, or a wind and weather-proof outer coat. Knickers and outing suits are worn throughout the mountain territory. Stout sports shoes or boots should be part of your outfit.

After the day's activities, the dinner hour and evening lounge or dance naturally suggest a change from the habiliments of travel and out-of-door life, but formal evening attire is entirely unnecessary.

Because of the change of climate and mountain altitudes it is advisable to include cold cream and the usual lotions for sunburn and chapped lips. The bright sunlight also suggests that you bring colored glasses.

One medium-sized suitcase or traveling bag should hold sufficient clothing for the tours of two weeks or less. On the longer tours two pieces of hand baggage should be ample. In any case trunks are unnecessary. Because of frequent handling, durable baggage, with strong handles, is essential.

The free allowance of baggage which may be carried in automobiles in the National Parks, is one piece weighing twenty-five pounds—this aside from a small overnight bag which passengers may easily carry with them.

As Burlington Escorted Tours are not responsible for damage to baggage or loss of personal effects we would suggest you secure from our representative an insurance policy. The rates are very reasonable. \$100.00 protection for 8 days costs 40c, for 13 days, 65c.

RATES FOR CHILDREN

Will be based on age and accommodations desired.

MEALS

Tour costs shown herein provide all meals (except while in Los Angeles on Tours N, N-F, O and P). In dining cars and at hotels passengers are free to select the meal they desire, from the service offered.

HORSEBACK TRIPS

Saddle horses may be hired at most stopping places in the National Parks.

EXTEND YOUR TOUR

It is a very simple matter to prolong your visit on the Pacific Coast. You merely leave one tour at Portland, Seattle, Vancouver, San Francisco or Los Angeles, and join a subsequent tour. Or you may use any of the tours for your going trip and return independently or vice versa. In such cases arrangement must be made at time of booking.

Allowance will be made for unused portion of complete tours under these circumstances.

TRAIN TIME AT CHICAGO

The time of arrival and departure at Chicago is shown in Central Standard Time (not Chicago Daylight Saving Time).

MAIL AND TELEGRAMS

Mail and telegrams for members of these parties should be addressed c/o Burlington Escorted Tour (A-5, B-6, P-4, or any other as the case may be), at hotels or lodges as shown in itinerary.

CHANGE IN RATES OR SCHEDULES

We reserve the right to make such alterations in the tours as may be deemed necessary due to change in train and auto schedules or other causes. Rates quoted herein are subject to change without notice.

DESCRIPTIVE BOOKLETS

This booklet of "Burlington Escorted Tours" manifestly can be but a practical description of the tours, and information as to joining them. You are invited to ask for such of these additional descriptive publications as appeal to you in the consideration of any tour.

We shall be pleased to mail them free of charge.

Yellowstone Park
Glacier Park
Rocky Mountain
National (Estes) Park
Rainier National Park

Pacific Northwest
California
Canadian Rockies
Scenic Colorado
The Cody Road

The Mississippi River
Scenic Line
Alaska
Black Hills
Hawaii



*Crater Lake National Park
There is no such blue in any other lake in the world*

"BURLINGTON ESCORTED TOURS" REPRESENTATIVES

CITY	ADDRESS	REPRESENTATIVE AND TITLE	RAILROAD
ATLANTA, GA.	516 Healey Bldg.	W. T. Vardaman, General Agent	Burlington
BOSTON, MASS.	80 Boylston St.	F. F. Johnson, General Agent	Burlington
	80 Boylston St.	J. H. Kenney, New England Pass'r Agt.	Great Northern
	236 Old South Bldg.	G. L. Brooks, Dist. Pass'r Agent	Northern Pacific
BUFFALO, N. Y.	716 Ellicott Sq.	C. W. Beardsell, Dist. Pass'r Agent	Northern Pacific
BURLINGTON, IOWA	Burlington Bldg.	J. J. Teeter, Div. Pass'r Agent	Burlington
CHICAGO, ILL.	179 W. Jackson St.	(S. J. Owens, Gen'l Agent Pass'r Dept.	Burlington
		(Emma W. Bock, Tour Representative	Burlington Tours
	73 E. Jackson Blvd.	G. W. Rodine, Gen'l Agent Pass'r Dept.	Northern Pacific
	212 South Clark St.	E. H. Moot, Gen'l Agent Pass'r Dept.	Great Northern
CINCINNATI, OHIO	505 Dixie Terminal Bldg.	J. C. Boyer, General Agent	Burlington
	608 Traction Bldg.	J. H. Brinkman, General Agent	Great Northern
	615 Gwynne Bldg.	R. H. McCurdy, Gen'l Agt. Pass'r Dept.	Northern Pacific
CLEVELAND, OHIO	1033 Terminal Tower	S. S. Hankis, General Agent	Burlington
	1334 Terminal Tower	Willard Adamson, General Agent	Northern Pacific
	508 Hippodrome Bldg.	F. L. Cobb, Dist. Pass'r Agent	Great Northern
DALLAS, TEXAS	701 Kirby Bldg.	C. W. Andrews, General Agent	Burlington
	1004 Southwestern Life Bldg.	I. H. Turner, Southwestern Pass'r Agent	Great Northern
	901 Southwestern Life Bldg.	Chas. Sorg, Jr., Southwestern Agent	Northern Pacific
DES MOINES, IOWA	505 Locust St.	D. A. Coffeen, City Pass'r Agent	Burlington
	328 Des Moines Bldg.	Neil Baird, Dist. Pass'r Agent	Northern Pacific
	305 Equitable Bldg.	A. E. Rohmer, Dist. Pass'r Agent	Great Northern
DETROIT, MICH.	704 Transportation Bldg.	F. L. Gannaway, General Agent	Burlington
	Lobby, Transportation Bldg.	H. G. Schuette, General Agent	Great Northern
	1006 Transportation Bldg.	Geo. Barnes, General Agent	Northern Pacific
GALESBURG, ILL.	Burlington Station	C. I. Twyman, Div. Pass'r Agent	Burlington
HANNIBAL, MO.	3rd and Lyon Sts.	Paul Anderson, Div. Pass'r Agent	Burlington
INDIANAPOLIS, IND.	910 Merchants Bank Bldg.	O. G. Hagemann, General Agent	Burlington
JACKSONVILLE, FLA.	510 Graham Bldg.	T. H. Harrison, Dist. Pass'r Agent	Burlington
KANSAS CITY, MO.	Seventh and Walnut Sts.	H. S. Jones, Gen'l Agent Pass'r Dept.	Burlington
	116 Railway Exchange Bldg.	F. A. Acker, General Agent	Northern Pacific
	544 Railway Exchange Bldg.	C. A. Rand, Gen'l Agent Pass'r Dept.	Great Northern
LINCOLN, NEBR.	142 S. Thirteenth St.	H. P. Kauffman, Gen'l Agt. Pass'r Dept.	Burlington
MILWAUKEE, WIS.	1203 Majestic Bldg.	C. J. Leydon, General Agent	Burlington
	1418 Majestic Bldg.	R. L. Kelly, General Agent	Northern Pacific
	502 Majestic Bldg.	B. C. Culbertson, General Agent	Great Northern
MINNEAPOLIS, MINN.	90 S. Seventh St.	J. E. Lynn, Gen'l Agent Pass'r Dept.	Burlington
	701 Marquette Ave.	C. S. Kirkland, Gen'l Agt. Pass'r Dept.	Northern Pacific
	640 Marquette Ave.	C. M. Cornelius, Gen'l Agt. Pass'r Dept.	Great Northern
NEW ORLEANS, LA.	708 Common St.	R. Wright Armstrong, General Agent	Burlington
NEW YORK CITY	500 Fifth Ave. (cor. 42nd St.)	M. J. Fox, Dist. Pass'r Agent	Burlington
	560 Fifth Ave.	H. M. Fletcher, Ass't Gen'l Pass'r Agent	Northern Pacific
	595 Fifth Ave.	M. M. Hubbert, Gen'l Eastern Pass'r Agent	Great Northern
OMAHA, NEBR.	1004 Farnam St.	J. W. Sharpe, Gen'l Agent Pass'r Dept.	Burlington
PEORIA, ILL.	301 S. Jefferson Ave.	W. A. Stingley, General Agent	Burlington
PHILADELPHIA, PA.	1401 Fidelity-Phila. Trust Bldg.	E. H. Smith, General Agent	Burlington
	504 Finance Bldg.	E. H. Whitlock, Dist. Pass'r Agent	Great Northern
	926 Fidelity-Phila. Trust Bldg.	B. M. Decker, General Agent	Northern Pacific
PITTSBURGH, PA.	1728 Koppers Bldg.	A. G. Mathews, General Agent	Burlington
	608 Park Bldg.	Clifford T. Penn, General Agent, Pass. Dept.	Northern Pacific
	602 Oliver Bldg.	F. H. Yorke, General Agent	Great Northern
QUINCY, ILL.	400 Maine St.	B. R. Newlon, Div. Pass'r Agent	Burlington
ST. JOSEPH, MO.	110 S. Fifth St.	S. T. Abbott, Div. Pass'r Agent	Burlington
ST. LOUIS, MO.	416 Locust St.	(C. B. Ogle, Gen'l Agent Pass'r Dept.	Burlington
		(L. W. Smith, Tour Representative	Burlington Tours
	520 Boatmen's Bank Bldg.	J. M. Sanford, General Agent	Great Northern
	440 Boatmen's Bank Bldg.	R. K. Cross, General Agent	Northern Pacific
ST. PAUL, MINN.	6th and Robert Sts.	S. L. Mentzer, Gen'l Agt. Pass'r Dept.	Burlington
	4th and Robert Sts.	M. R. Johnson, Gen'l Agt. Pass'r Dept.	Northern Pacific
	4th and Minnesota Sts.	W. G. Mitsch, City Ticket Agent	Great Northern

J. G. DELAPLAINE, Manager Burlington Escorted Tours, 547 West Jackson Boulevard, Chicago, Illinois



"We'll show you the West"