

Escorted Tours
TO THE
PACIFIC NORTHWEST
and ALASKA



BURLINGTON ROUTE

NORTHERN PACIFIC

GREAT NORTHERN



We follow a beautiful stream through the Montana Rockies

Vacations Without a Care

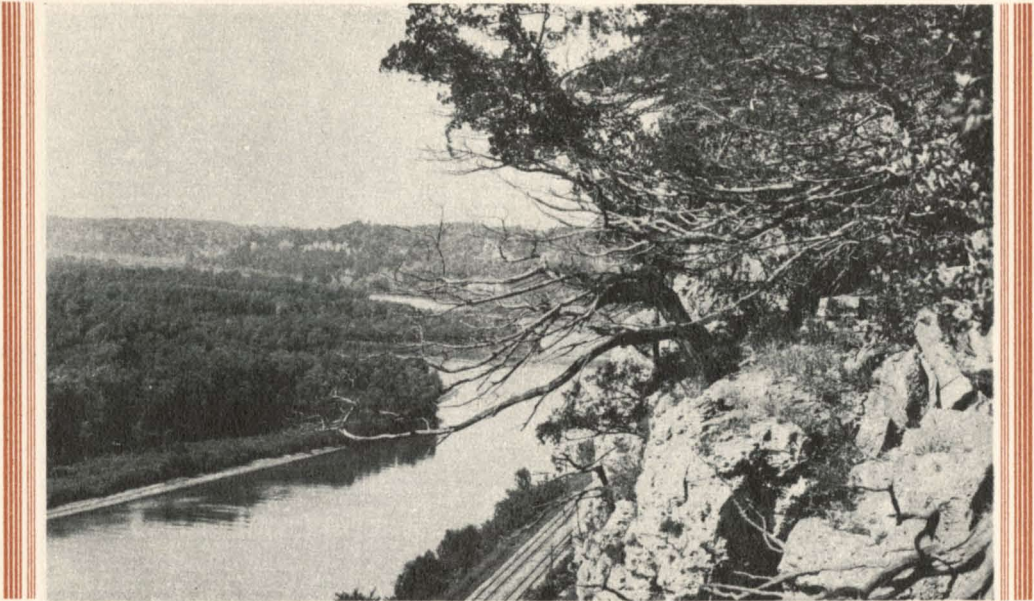
"Travel. Go somewhere worthwhile. There is no privilege comparable to intelligent travel. It is the master experience. Travel refreshes the intellect, thrills the heart, gratifies longing eyes and imparts to life new reasons for living. It hangs a thousand pictures of the living world upon the romantic walls of memory. Its lure is forever fresh, forever romantic, often adventurous beyond our dreams."

RALPH K. STRASSMAN in the *Red Book*

To climb aboard a splendid train and cut loose from all the dull duties of the world of work-a-day, to escape for a time from the humdrum routine of yesterday, today, and tomorrow, and fare forth on the high-road of adventure "for to see and to admire the wonders of the world so wide" is one of the most joyful and soul-satisfying of experiences.

There is no need nowadays to forego the enjoyment and benefit of travel because one's time is limited to a few brief weeks or even days. Modern methods and practices have affected travel no less than they

have enhanced the science of business and the art of housekeeping. There is no need to devote valuable time to mapping out plans, charting your course, looking up costs, studying train schedules, fussing with tickets. Just as a successful business man employs skilled men and women to write his letters, keep his accounts, and experts to offer him counsel, so today's long-distance traveler may look to Burlington Escorted Tours to relieve him or her of all the perplexities, technicalities, and bothersome details attending a trip or tour. Vacations are made happy by foresight, harassed by lack of it. Burlington



The Burlington's famed Mississippi River Scenic line between Chicago-St. Paul-Minneapolis

Escorted Tours place travel experience at your disposal.

This booklet treats with plans for a variety of Escorted tours to and through the Pacific Northwest, the American Wonderland, requiring only two weeks time; and other and longer tours embracing Alaska or California, and with ample provision for extending the California tours to include a voyage across the Pacific to Honolulu.

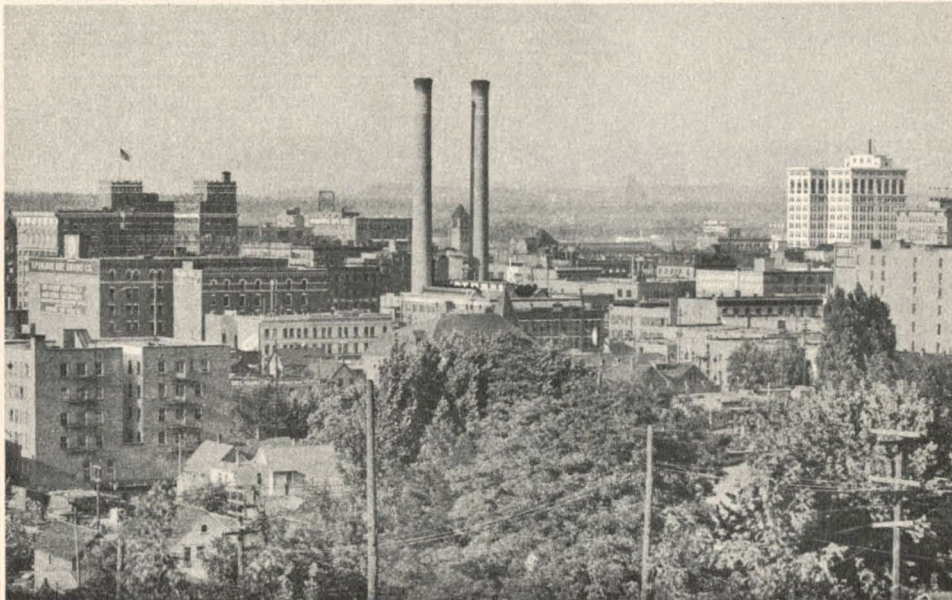
The complete route going out and coming back, is definitely established beforehand—in fact everything is arranged in advance; Pullman space, hotel accommodation, railroad transportation, meals in dining cars and at hotels, sightseeing trips by motor. We travel in special Pullmans attached to

the best trains each carrying dining car, observation car, and in most cases—guess what—our own special recreation car fitted up for entertainment in the form of dancing, music, motion pictures, card parties, etc.

Everything is paid for in advance in a lump sum covering all necessary expenses attending strictly first class travel. A travel expert accompanies each party as business manager to look after everything and relieve guests of all travel details. These are "vacations without a care" on which there is nothing for the guests to do but have a good time, seeing everything in sight, doing everything worth doing, with a carefree group of friends and traveling companions, out for a holiday, imbued with the spirit of adventure, happy in the social atmosphere of a traveling house party.

You will enjoy yourself—*have a good time*—on one of these tours. They represent a sound, sensible travel plan that is not an experiment in any sense. Experienced railroad officials have arranged the details with the co-operation of the Pullman Company, hotel and motor interests, and the National Park Service.

The "escorted tour" idea deserves your consideration in connection with any vacation plan, and especially in case you go alone, these traveling house-parties are ideal, assuring many congenial acquaintances with much in common. You travel without any responsibilities, you see the most, in the best way and with no waste of time.



A glimpse of Spokane . . . big, bustling, metropolis of the Inland Empire

Pacific Northwest --- TOUR N - 14 days

**Through The American Wonderland
Including Rainier and Glacier National Parks**

(See calendar schedule Page 10)

SUNDAY—A busy scene is enacted as tour guests from the east and southeast and all over everywhere foregather an hour before train time in the great concourse of the Chicago Union Station at Canal St. and Jackson Blvd. for presentation of credentials and are escorted to their waiting Pullmans.

We pull out at 10:35 A.M. (Central Time) and wheel smoothly through the pleasant countryside of northern Illinois. Luncheon over, there is a get-together assembly in the recreation car, introductions are made, and by the time we reach the Mississippi River in mid-afternoon everybody has pretty well confirmed his or her hope of having a jolly crew of desirable traveling companions.

All afternoon and until after nightfall we travel alongside the eastern shore of the

Mississippi River for 300 miles through the locale of the Black Hawk War and the projected Upper Mississippi Wild Life Reserve. Charming river scenery every mile of the way. Late afternoon finds couples and four-somes arranged for dinner parties in the dining car, and groups busily discussing the propitious start and the adventures just ahead. The recreation car suggests a concert in the evening which continues until 10:30 P. M. when we arrive in St. Paul and are joined by some new members.

MONDAY—An interesting day through North Dakota where they reckon wheat fields not by acres but by square miles. About noon we cross the historic Missouri River between Bismarck, the capital of North Dakota, and Mandan, where we are greeted by Chief Crazy Horse and a band of Sioux Indians in full tribal regalia and entertained by them with



The great Canadian Harbors . . . Vancouver and Victoria, present an interesting marine picture of world trade.

dances to the accompaniment of the tom tom and aboriginal chants.

In the early afternoon we penetrate the Ranch country and later the Badlands and are especially interested in the town of Medora where Theodore Roosevelt lived and rode the range as a youthful cowboy. And so in the late afternoon out of North Dakota into Montana and within an hour across the Yellowstone River. Night brings a program of entertainment in the recreation car including motion pictures, music, dancing of course, and a good time all around.

TUESDAY—We awaken this morning to find ourselves deep in the mountains and the entire morning is a continuous panorama of Rocky Mountain magnificence as the train winds its serpentine way up the east slope, then crosses over the Continental Divide through Homestake Pass and spirals down the western slope into Butte—"The greatest mining camp in the world." We found first the crooked course of the fast-flowing Hell Gate River and then the Clark's Fork of the Columbia River, and later in the afternoon ride for many miles along the north shore of Lake Pend d'Oreille, reaching Spokane about

6:00 P.M. for a stopover of twenty-four hours and putting up at the Davenport Hotel in rooms with bath.

WEDNESDAY—A morning sightseeing tour by motor 'roundabout Spokane, great and beautiful city, and metropolis of the "Inland Empire," to see the Falls of the Spokane River and enjoy the parks, boulevards and residential sections, returning to the hotel in time for a shopping tour if desired before luncheon.

Another motor tour in the afternoon and farther afield this time—a scenic treat that takes us to both Lake Coeur d'Alene and Hayden Lake with time for bathing, boating and other diversions, returning to our special train for dinner and a pleasant evening of music and dancing in the recreation car as we wheel on toward the western coast.

THURSDAY—We pass through Seattle early in the morning but only hesitate this time as we're coming back here later on. Meantime we head north, following the coast range up through Everett and Bellingham and keep going in this direction until we run clear out of the U. S. A., cross the International Boundary at Blaine and



Paradise Inn nestles in a flower-filled valley at the foot of perpetually snow-crowned Mt. Rainier

pull up at Vancouver for the afternoon and overnight on Canadian soil. In order to make the most of our time here motors await our arrival at the station and we start at once on a sightseeing trip embracing Stanley Park, Marine Drive, Shaughnessy Heights and other points of outstanding interest in this big foreign city that stands but nine feet above sea level.

Dinner, evening, and overnight at the Hotel Georgia (rooms with bath).

FRIDAY—Time to visit the shops this morning if you wish before embarking at 10:30 A.M. on a ship that sails across the Strait of Georgia to Victoria on Vancouver Island where shoreleave is utilized for a motor tour to see as much as we can of this typically British city of lovely parks, fine residences and gardens, and tall hedges. Luncheon and dinner today on shipboard.

The voyage is resumed early in the afternoon, across the Strait of San Juan de Fuca and through the placid waters of Puget Sound, hour after hour, cruising pleasantly among the islands on the way to Seattle, where we arrive at 8:30 P.M. and after customs inspection proceed to the fine new

Olympic Hotel which will be our headquarters until Sunday morning.

SATURDAY—The morning is left open to enjoy as you see fit the attractions of this great northwest metropolis and world port with its fine shops, one of the greatest markets in America and other interesting places.

Sightseeing by motor in the afternoon, to see the parks, boulevards, residence section, the campus of the State University and Lake Washington which is Seattle's famed fresh-water harbor where ships of the world ride at anchor.

SUNDAY—We leave Seattle after breakfast, in motors for an extremely interesting 90-mile ride which takes us through a very productive small fruit section on the way to Tacoma and Rainier National Park. Twenty-four golden hours here at charming Paradise Inn (rooms with bath) which nestles in a lovely valley where wild flowers abound in a profusion which challenges the imagination. Yonder the magnificent snow-crowned peak rises into the sky and invites us to any form and degree of mountain sport that fancy dictates.



Portland, Ore., to whose numerous claims to fame, add a few million roses

MONDAY—Any number of thrilling activities to choose from this morning—"Nature coasting," horseback riding—the ice and snow fields are so near at hand that there is even time before luncheon to don the hobnail boots and the rest of the alpine outfit, grab an alpinestock and set out with a guide on an adventurous ascent part way up the icy slope of Mt. Rainier. This is a day of thrills you'll not soon forget.

We leave in mid-afternoon and motor through the forest of mighty Douglas Fir trees, arriving in Tacoma about 5:30 P.M. Dinner at the Tacoma Hotel and dancing in the evening, or cruising about to see the sights in this second largest city on Puget Sound grown to great and prosperous proportions, thanks to its tremendous lumber industry—and drifting down to our special Pullmans and the recreation car anytime after 10:00 P. M. No particular hurry about this as we don't pull out till 1:30 A.M.

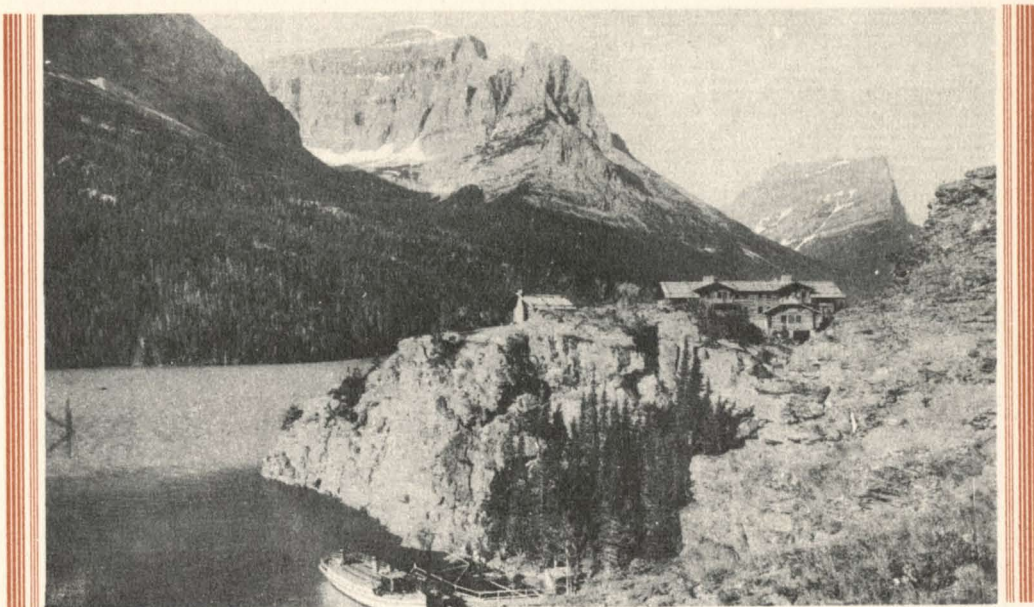
TUESDAY—We wake up in Portland, another great progressive northwest city and world port. Headquarters here are the Multnomah Hotel. The morning is devoted to a motor ride over the Columbia

River Highway, a wonderful road that winds and twists a thrilling and scenic way along the cliffs bordering the great river—out to Horse Tail and Multnomah Falls.

Motoring again in the afternoon about Portland, famed the world over for its wonderful display of roses. They are everywhere—growing along the curbs, climbing up the telephone poles, trailing up to the housetops, producing a riot of color and decorative landscaping not found anywhere else. Time after the motor tour to visit the shops before dinner.

We leave Portland at 9:00 P.M., enjoying the dancing, the music, and all the rest of the gaiety in the recreation car as the train glides along the north bank of the Columbia River bound for new scenes.

WEDNESDAY—A scenic morning trip across northern Idaho, and a wonderful afternoon ride along the Kootenai River, through the very heart of the Montana Rockies, and following the Flathead River for fifty miles along the southern boundary of Glacier National Park during the early



*Going-to-the-Sun Chalets, perched like an eagle's nest on a rocky ledge overhanging St. Mary Lake
... Glacier National Park*

evening, arriving at Glacier Park 9:35 P. M. where our special Pullmans, recreation car and all, are detached from the transcontinental train and parked conveniently for overnight occupancy.

THURSDAY—You are awakened this morning by the sound of the tom toms and peer out to behold the illustrious Chief Two-Guns-White-Calf and his band of Blackfeet Indians out on the platform welcoming you to the land of shining mountains.

We breakfast at the great Glacier Park Hotel which the Indians call the "Big Trees Lodge"; then start off in motor cars following the main range of the Rockies northward 32 miles to St. Mary Lake, here transferring to a boat for a never-to-be-forgotten cruise on this beautiful body of water walled all 'round by majestic peaks whose cliff-like slopes come right down to the water's edge. And so to the group of Chalets, perched like an eagle's nest on a rocky ledge in the shadow of the sacred Going-to-the-sun Mountain. Here world travelers agree the viewpoint reveals the wildest and most colossal confusion of mountain grandeur on the Continent.

Luncheon at the Chalets, and several hours afterward for short hikes over fascinating trails into the mountain world, or just sitting on the veranda admiring this loveliest single picture in America and perhaps in the world where the view discloses a veritable sea of peaks which rise sheer and sharp as the pyramids—ideal mountains-as-they-ought-to-be.

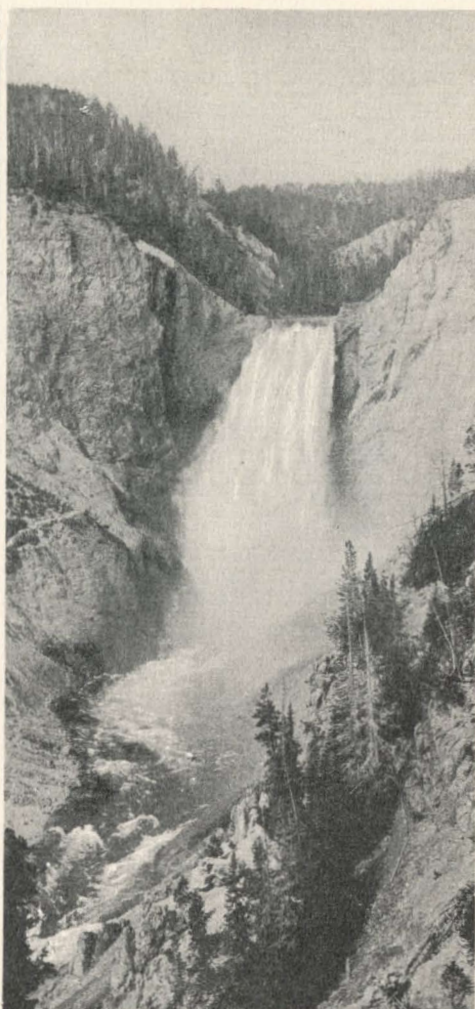
Back in the late afternoon, by boat and motor to Glacier Park Hotel for dinner followed by entertainment by the Indians for our especial benefit, and leave at 9:35 P. M. headed eastward and homeward.

Note:—Guests who desire to extend their visit in Glacier National Park may do so—joining the next Burlington Tour party or traveling homeward independently.

FRIDAY—All morning riding through the old Indian country of eastern Montana, paralleling the upper Missouri River where the Lewis and Clark expedition made thrilling history 120 years ago and revealed to the world a whole new empire. The prosperous little towns along here are especially interesting when we recall that many of them started life as forts built by the Wes-



Nature's Timepiece — Old Faithful Geyser



The Great Fall of the Yellowstone

YELLOWSTONE NATIONAL PARK

tern Army during the Indian campaigns of fifty years ago.

Through North Dakota this afternoon; old time cattle country now producing wheat for the world—our time divided between sightseeing from the car window and entertainment of various sorts in the recreation car.

SATURDAY—Headed south through the Mississippi Valley, closely following the great river, with every curve in the track revealing new vistas of rare charm—a memorable day of surpassingly beautiful scenic treats which comes as a fitting climax to our delightful and adventurous tour.

This is our last day of touring; the last chance to vindicate our bridge game; a final fling in the "ballroom." Much ado today—going back over the adventures which have been ours during these two eventful weeks; living over the entire trip, group-singing, a farewell party in the recreation car, promises to write and to see again the warm friends made on our traveling house party that has taken us more than six thousand miles out to and through the American Wonderland, and brought us back home, happy in a group of new friends, with a new appreciation of the wonders of the northwest, and uplifted by our contact with the mountain world.

Pacific Northwest Tours Including Yellowstone Park

A week spent in seeing the strange sights in Magic Yellowstone including the famous Cody Road can be arranged in connection with all except the last of the Pacific Northwest (N) Tours described in the preceding pages, by the simple expedient of leaving one Tour at Livingston, Montana, on Tuesday morning and joining the next tour at Billings, Montana, seven days later.

TUESDAY—We leave Livingston, headed south through Yankee Jim Canyon, and at 9:30 A.M. reach the northern entrance to "Wonderland," transferring here to motors for the short ride on to the lodges at Mammoth Hot Springs for an afternoon and evening in which to enjoy the hundreds of strange and beautiful hot springs terraces hereabout.

WEDNESDAY—Motoring through three famous geyser basins to Old Faithful where we spend 24 hours at the delightful Old Faithful Lodges. Afternoon hiking trip among the greatest aggregation of geysers in the world—boiling springs, seething cauldrons, steaming pools, scores of geysers—a thousand curious phases of hot water phenomena, surprising, unheard-of. The time spent here is crowded with strange sights and thrilling experiences. Time to see the far-famed "Old Faithful" Geyser erupt a dozen times. And be on hand early this evening when the bears have supper, and afterwards attend the interesting lecture on the history of Yellowstone delivered by one of the rangers.

THURSDAY—Leave Old Faithful at 1:50 P.M., motoring twice over the Continental Divide in a great mountain loop, and along the shore of Yellowstone Lake to the Lake lodges, for overnight. Lots of bears around here too.

FRIDAY—Motoring along the Yellowstone River through Hayden Valley with a sidetrip to Dunraven Pass, then across the river to Inspiration Point for a first wonderful view of the Grand Canyon of the Yellowstone and the majestic Great Fall, arriving about noon at the Grand Canyon Lodges which will be our headquarters until Monday morning.

These lodges are miniature villages of small wooden cottages grouped around large and attractive buildings of rustic architecture which are the central dining room and recreational center. This particular lodge group is in the forest near the edge of the Grand Canyon. The accommodations are very good and you can be perfectly comfortable while living as close to nature as you wish.

SATURDAY—It is doubtful whether there is any more inviting spot in America in which to spend a couple of days than here at the edge of the amazing painted chasm which is the Grand Canyon of the Yellowstone. You'll enjoy every minute of your time here, exploring in the great gorge and admiring the inexpressible beauty of the majestic Great Fall from different vantage points on both sides of the canyon. And you'll enjoy the campfire party amid the pines tonight, the community singing, the talks, stories and other forms of entertainment both planned and impromptu.

SUNDAY—Usually there are religious services conducted at the Canyon lodges, and during the day you'll enjoy strolling over to visit the big Hotel on the other side of the canyon. You can go horseback riding, camera-hunting, visit the bears and spend each precious hour profitably and pleasantly in a great variety of diversions.

MONDAY—Leave the Grand Canyon at 9:10 A.M. over the Cody Road—the famous 90-mile scenic motor highway through the Buffalo Bill country, over the Absaroka Mountains, through Sylvan Pass, through the Shoshone National Forest, the "Dude Ranch" country and via the great Shoshone Irrigation Dam and through the breathtaking Shoshone Canyon.

Arrive in Cody, Buffalo Bill's home town, at 4:55 P.M., and after dinner at the Burlington Inn leave at 8:30 P.M. When you wake up tomorrow morning, you'll find yourself in the midst of another gay house party bound for the Pacific Northwest.

Passengers may stop at the hotels in Yellowstone instead of lodges if desired, at a total additional cost of \$13.00.

Calendar Schedule of Pacific Northwest "N" Tours

TOUR			N1	N2	N3	N4	N5	N6	N7	N8	N9	N10
Lv. Chicago	10:35 am	Sun.	June 16	June 23	June 30	July 7	July 14	July 21	July 28	Aug. 4	Aug. 11	Aug. 18
Lv. St. Paul	10:55 pm	"	" 16	" 23	" 30	" 7	" 14	" 21	" 28	" 4	" 11	" 18
Lv. Minneapolis	11:50 pm	"	" 16	" 23	" 30	" 7	" 14	" 21	" 28	" 4	" 11	" 18
Ar. Spokane	6:05 pm	Tues	" 18	" 25	July 2	" 9	" 16	" 23	" 30	" 6	" 13	" 20
Lv. Spokane	6:30 pm	Wed.	" 19	" 26	" 3	" 10	" 17	" 24	" 31	" 7	" 14	" 21
Ar. Vancouver	2:30 pm	Thur.	" 20	" 27	" 4	" 11	" 18	" 25	Aug. 1	" 8	" 15	" 22
Lv. Vancouver	10:30 am	Fri.	" 21	" 28	" 5	" 12	" 19	" 26	" 2	" 9	" 16	" 23
Ar. Victoria	3:00 pm	"	" 21	" 28	" 5	" 12	" 19	" 26	" 2	" 9	" 16	" 23
Ar. Seattle	8:30 pm	"	" 21	" 28	" 5	" 12	" 19	" 26	" 2	" 9	" 16	" 23
Lv. Seattle	8:30 am	Sun.	" 23	" 30	" 7	" 14	" 21	" 28	" 4	" 11	" 18	" 25
Lv. Rainier	2:30 pm	Mon.	" 24	July 1	" 8	" 15	" 22	" 29	" 5	" 12	" 19	" 26
Lv. Tacoma	1:30 am	Tues.	" 25	" 2	" 9	" 16	" 23	" 30	" 6	" 13	" 20	" 27
Ar. Portland	6:45 am	"	" 25	" 2	" 9	" 16	" 23	" 30	" 6	" 13	" 20	" 27
Lv. Portland	9:00 pm	"	" 25	" 2	" 9	" 16	" 23	" 30	" 6	" 13	" 20	" 27
Ar. Glacier Park	9:35 pm	Wed.	" 26	" 3	" 10	" 17	" 24	" 31	" 7	" 14	" 21	" 28
Lv. Glacier Park	9:35 pm	Thur.	" 27	" 4	" 11	" 18	" 25	Aug. 1	" 8	" 15	" 22	" 29
Ar. Minneapolis	6:55 am	Sat.	" 29	" 6	" 13	" 20	" 27	" 3	" 10	" 17	" 24	" 31
Ar. St. Paul	7:30 am	"	" 29	" 6	" 13	" 20	" 27	" 3	" 10	" 17	" 24	" 31
Ar. Chicago	7:30 pm	"	June 29	July 6	July 13	July 20	July 27	Aug. 3	Aug. 10	Aug. 17	Aug. 24	Aug. 31

COST OF PACIFIC NORTHWEST "N" TOURS

Cost of complete tour from Chicago, including Pullman accommodations, hotels, all meals, auto trips, Rainier and Glacier National Parks, but not including personal tips.

PULLMAN ACCOMMODATIONS	REGULAR TOUR		INCLUDING YELLOWSTONE (Lodges)	
	With Rail Ticket	Without Rail Ticket	With Rail Ticket	Without Rail Ticket
Two in a lower berth (each).....	\$234.78	\$144.48	\$290.51	\$200.21
One in a lower berth.....	254.78	164.48	320.26	229.96
One in an upper berth.....	243.80	153.50	308.35	218.05
Two in a compartment (each).....	276.50	186.20	344.88	254.58
Two in a drawing room (each).....	295.50	205.20	365.75	275.45
Three in a drawing room (each).....	264.00	173.70	330.75	240.45

The figures shown above, "Without Rail Ticket," are the tour costs for passengers joining tour at these points with through rail ticket purchased at home station.

The following rates will illustrate the cost from various Eastern points. These rates include rail transportation via Chicago, on standard routes, with Pullman to and from Chicago unless otherwise specified. *No meals or auto trips* are included until joining tour at Chicago or St. Paul. Rates subject to change without notice.

	REGULAR TOUR			INCLUDING YELLOWSTONE (Lodges)		
	One in Lower	Two in Lower(Each)	One in Upper	One in Lower	Two in Lower(Each)	One in Upper
Baltimore, Md.....	\$311.43	\$283.18	\$297.15	\$472.16	\$334.16	\$356.95
Boston, Mass.....	330.14	300.01	315.10	395.62	355.74	379.65
Buffalo, N. Y.....	291.84	266.21	278.60	357.32	321.94	343.15
Cincinnati, Ohio.....	273.33	249.58	260.85	338.81	305.31	325.40
Cleveland, Ohio.....	277.63	253.88	265.15	343.11	309.61	329.70
†Des Moines, Iowa.....	232.76	209.76	223.55	297.88	271.69	287.40
Detroit, Mich.....	273.68	249.93	261.20	339.16	305.66	325.75
Indianapolis, Ind.....	267.68	243.93	255.20	333.16	299.66	319.75
*Kansas City, Mo.....	244.07	215.44	232.60	309.19	277.37	296.45
Louisville, Ky.....	269.73	245.98	257.25	335.21	301.71	321.80
†Milwaukee, Wis.....	240.31	217.31	231.10	305.43	279.24	294.95
Minneapolis, Minn.....	226.81	203.81	217.60	291.93	265.74	281.45
New York, N. Y.....	320.80	291.80	306.72	386.28	347.53	370.77
*Omaha, Neb.....	240.26	213.51	229.55	305.38	275.44	293.40
Philadelphia, Pa.....	314.12	285.87	299.84	379.60	314.60	364.39
Pittsburgh, Pa.....	286.49	261.99	273.71	351.97	317.72	338.26
St. Louis, Mo.....	262.28	238.53	249.80	327.76	294.26	314.35
St. Paul, Minn.....	226.81	203.81	217.60	291.93	265.74	281.45
Washington, D. C.....	311.43	283.18	297.15	376.91	338.91	361.70

*Join and leave tour at St. Paul. †Join and leave tour at St. Paul. No Pullman included to or from St. Paul.



Auk Lake and Mendenhall Glacier, reached by a short drive from Juneau, Alaska

Alaskan Tours

What manner of vacation experience could be more captivating of the imagination, more fraught with the charm of adventure and fuller of educational advantage than a wonderful Alaskan tour?

ALASKA!—Whence have some intriguing tales of Klondike gold, of strange child-like peoples observing quaint customs, of the stirring exploits of intrepid explorers, salmon fisheries, totem poles, Kennecott copper, igloos and Northern Lights.

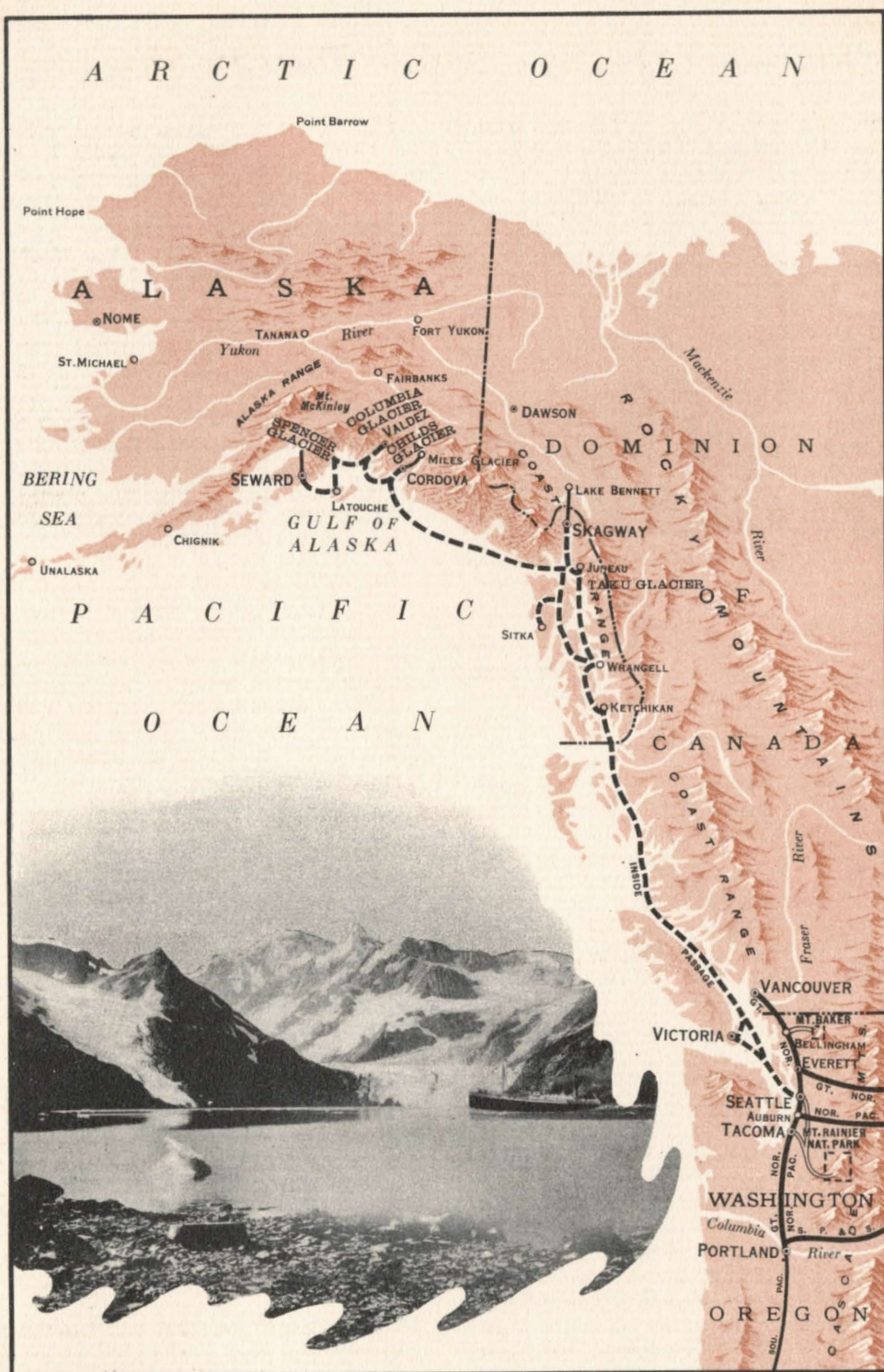
'Tis a romantic land of strange contrasts where tallow candles in quaint Indian villages vie with electric lights in modern towns; where totem poles stand next to telephone poles; strange native craft dot the harbors into which great modern ships steam up from the "outside"; summer night without darkness; the northern quarter of the great territory lies within the Arctic circle, yet, down south of the great Alaskan Range of mountains lies a warm, green, summer land of sunshine, and flowers so endowed with unrivalled scenic charm as to defy adequate description—and enchanting beyond all imagination. A land of immeasurable forests of

pine, hemlock, and arrow-tipped spruce marching up the slopes to the snow-line.

And mountains! Peak after peak, range behind range! A sight to thrill the world traveler.

A 2000-mile salt water trip from Seattle—day after day cruising the placid waters of the world famous "inside passage" on a beautiful white ship weaving in and out among countless fairy islands on an emerald sea sheltered on the Pacific side by an edging of cliffs and jutting pinnacles which are in reality submerged mountains; defined on the landward side by the Canadian coast and the long strip of Alaskan territory. Day after day the perfect adventure continues. An everchanging panorama of island dotted waters smooth as a mill pond. The ship glides within a stone's throw of gleaming glaciers beside which it appears as a toy boat.

On toward the top of the world. Cruising comfortably through hours filled with the romance of a strange new land bathed in the glow of the mysterious aurora.



Map showing route of Burlington Escorted Tours through the "Inside Passage" to Alaska

Itinerary of 19-day Alaskan Tours (to Skagway)

TOUR S-2 leaves Chicago July 13, west-bound via Burlington and Great Northern; returning via Northern Pacific and Burlington. From Seattle to Skagway and return on SS. Dorothy Alexander.

TOUR S-4 leaves Chicago August 3, west-bound via Burlington and Northern Pacific; returning via Great Northern and Burlington. From Seattle to Skagway and return on SS. Dorothy Alexander.

SATURDAY JULY 13—AUG. 3—Leave Chicago at 10:35 A.M. via Burlington Route, starting with a daylight ride of 300 miles along the upper Mississippi River, arriving St. Paul at 10:35 P.M. and Minneapolis at 11:25 P.M.

SUNDAY JULY 14—AUG. 4—Enroute through North Dakota and eastern Montana.

MONDAY JULY 15—AUG. 5—A day full of thrills and magnificent scenic views from the car window and observation platform while crossing the main range of the Rocky Mountains.

TUESDAY JULY 16—AUG. 6—We reach the western coast at Seattle early this morning and turn northward for an interesting train ride along the shore of Puget Sound, crossing the Canadian boundary and reaching Vancouver, B. C. at 2:30 P.M. for a sightseeing tour by motor embracing all chief points of interest, returning southward at midnight.

WEDNESDAY JULY 17—AUG. 7—Breakfast in Bellingham before leaving on a motor trip to Mt. Baker Lodge where we spend the day and night at this newest of Pacific Northwest mountain resorts.

THURSDAY JULY 18—AUG. 8—Leave Mt. Baker in the morning by motor to Bellingham, thence by train to Seattle, arriving there right after luncheon for an afternoon of sightseeing including the parks, boulevards, University of Washington campus, Lake Washington, Seattle's famed freshwater harbor, and other outstanding attractions of this big northwest metropolis and world port. Overnight at the new Washington Hotel.

FRIDAY JULY 19—AUG. 9—Leave Seattle at 10:00 A.M. on the SS. Dorothy Alexander of the Admiral Line, crossing Puget Sound and arriving in Victoria at 3:00 P.M. where we spend three hours and enjoy a motor trip about this charming city which is so typically English.

SATURDAY JULY 20—AUG. 10—During the day we are negotiating the first part of the "Inside Passage" on the way to Alaska and as there are no Ports of Call, we amuse ourselves exploring the ship, playing deck games, or just contemplating the beautiful scenery from the viewpoint of a comfortable deck chair. During the evening the ship's five piece orchestra provides music for dancing.

SUNDAY JULY 21—AUG. 11—At 1:00 P.M. we reach Ketchikan, the first Port of Call in Alaska and a picturesque busy little city set on a mountain side and framed in pines. It is the headquarters of the fishing fleet and has a dozen salmon canneries. Here we have our first view of the real Alaska totem poles and spend an interesting two hours on shore leave.

MONDAY JULY 22—AUG. 12—We arrive at Sitka at 7:00 A.M. and remain until 1:00 P.M.—six hours on shore leave visiting this interesting city which was formerly the Russian Capital and later the United States capital of Alaska, and is the oldest town on the Pacific Coast. Here we find many historic Russian monuments and shrines including St. Michael's Cathedral with its jeweled altar cloth, Russian pictures and hangings.

TUESDAY JULY 23—AUG. 13—At 8:00 A.M. we make port at Skagway, famous boom city of gold rush days. During the day we make a spectacular rail journey inland, climbing to the summit of White Pass and through Canadian territory to Lake Bennett for luncheon, returning to Skagway in time to sail at 6:00 P.M.

WEDNESDAY JULY 24—AUG. 14—Morning finds our boat in dock at Juneau, the present capital of Alaska. The six hours we have here can be spent in a variety of



Skagway . . . a name heard 'round the world during the Klondike gold rush in '98

ways—visiting the museum or making one or more of the short side trips among which that to Auk Lake and Mendenhall Glacier is outstanding from a scenic viewpoint. At 3:00 P.M. the ship stops before a world marvel—done in ice—the great Taku Glacier, for a close-up view which is likely to disclose huge chunks of ice breaking off the “face” and falling into the sea to form small icebergs that we see floating about.

THURSDAY JULY 25—AUG. 15—After sailing across Frederick Sound we arrive at Wrangell at 8:00 A.M. and after a stop of two hours continue on to Ketchikan for the evening.

FRIDAY JULY 26—AUG. 16—Southward through Queen Charlotte Sound and the Seymour Narrows entering the Strait of Georgia late in the day.

SATURDAY JULY 27—AUG. 17—All day cruising leisurely through the placid waters and among the fairy islands of the “Inside Passage.”

SUNDAY JULY 28—AUG. 18—Back in Seattle at 9:00 A.M., at the new Washington Hotel, for an open day in which to go to Church and continue sightseeing where

we left off ten days ago. Leave Seattle at 11:45 P.M.

MONDAY JULY 29—AUG. 19—Here we are in Portland where our program provides for a morning auto trip over the wonderful Columbia River Highway to Multnomah and Horse Tail Falls and an afternoon sightseeing tour 'roundabout Portland to see the display of roses which have brought Portland world recognition as “The Rose City.” Leave Portland at 9:00 P. M.

TUESDAY JULY 30—AUG. 20—A day of scenic thrills through a different part of the Montana Rockies than that seen on the westbound trip. We bid adieu today to those members of the S-2 party who are going to visit Yellowstone Park before returning home, and to Tour S-4 guests who stop off for a visit in Glacier National Park.

WEDNESDAY JULY 31—AUG. 21—En-route through eastern Montana and North Dakota.

THURSDAY AUG. 1—AUG. 22—Arrive Minneapolis 7:00 A.M. and St. Paul at 7:30 A.M. and finishing our tour with an interesting daylight train ride for 300 miles along the upper Mississippi River, arriving in Chicago at 7:30 P.M.

Itinerary of 26-day Alaskan Tours (to Seward)

TOUR S-1 leaves Chicago July 6, west-bound via Burlington and Northern Pacific; returning via Great Northern and Burlington. From Seattle to Seward and return on SS. Yukon.

TOUR S-3 leaves Chicago August 3, west-bound via Burlington and Great Northern; returning via Northern Pacific and Burlington. From Seattle to Seward and return on SS. Aleutian.

SATURDAY JULY 6—AUG. 3—Leave Chicago at 10:35 A.M. via Burlington Route for a pleasant afternoon train ride along the Wisconsin shore of the Mississippi River for 300 miles arriving St. Paul at 10:30 P.M. and Minneapolis at 11:25 P.M.

SUNDAY JULY 7 — AUG. 4 — Enroute through North Dakota and eastern Montana.

MONDAY JULY 8—AUG. 5—All day riding through the Montana Rockies—climbing up the eastern slope of the Continental Divide, then coasting down the Pacific slope in a series of thrilling curves and loops; arriving in Spokane early in the evening.

TUESDAY JULY 9—AUG. 6—We reach Portland at 7:00 A.M. and after breakfast at the Multnomah Hotel, whirl away on a motor ride over the famous Columbia River Highway to Multnomah and Horse-tail Falls, and back for luncheon at the Hotel.

Another motor trip 'roundabout Portland this afternoon which will illustrate how this great northwest metropolis won its well-known nickname "The Rose City." Leave Portland at 4:30 P.M. enroute to Tacoma putting up for the night at the Winthrop Hotel (rooms with bath).

WEDNESDAY JULY 10—AUG. 7—After breakfast we motor through the forest of Big Trees, past Longmire Springs and the great Nisqually Glacier to Rainier National Park for luncheon at Paradise Inn (rooms with bath) which will be our headquarters until Friday.

The afternoon is spent roaming through this flower-filled valley in which the Inn nestles, and in surveying the big snow-crowned peak—calculating upon tomorrow's adventure.

THURSDAY JULY 11—AUG. 8—An entire day here in which to don the hobnail boots and an alpine costume for an ascent of the glorious mountain as far up as time permits; horseback riding, coasting down the ice-covered slopes, or enjoying yourself as fancy dictates.

FRIDAY JULY 12—AUG. 9—Leave Paradise Inn at 8:00 A.M. in motors bound for Seattle and Puget Sound, arriving at noon and putting up at the Olympic Hotel (rooms with bath). Afternoon sightseeing tour embracing the University of Washington, the parks, boulevards, residence section, Lake Washington and many other attractions.

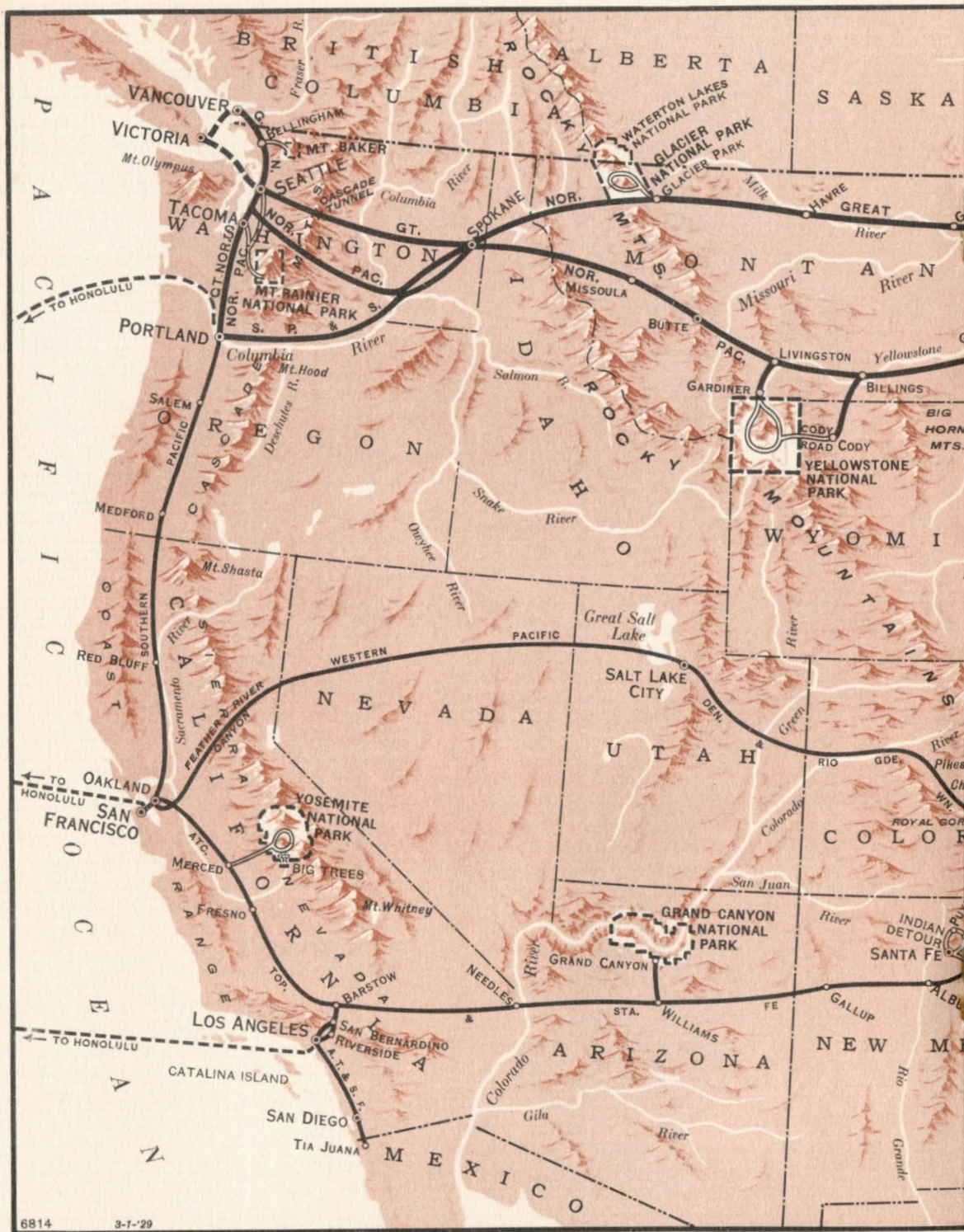
SATURDAY JULY 13—AUG. 10—Now the adventure really begins as we sail out of the port of Seattle at 9:00 A.M. for a 3600 mile trip to the Land of the Midnight Sun.

SUNDAY JULY 14—AUG. 11—Steaming leisurely and pleasantly through Canadian waters and entering the famed "Inside Passage," one of the most entrancing strips of water in the world. On toward Alaska.

MONDAY JULY 15—AUG. 12—We arrive in Ketchikan early and remain several hours visiting this interesting town with its totem poles, salmon canneries, and fishing fleet. Late in the afternoon we reach Wrangell, remaining about two hours.

TUESDAY JULY 16—AUG. 13—Arrive at Juneau, the capital of Alaska, about noon for a visit of several hours. There is time to visit the museum or to make a motor trip to Auk Lake and Mendenhall Glacier, or to any one of a number of other scenic attractions.

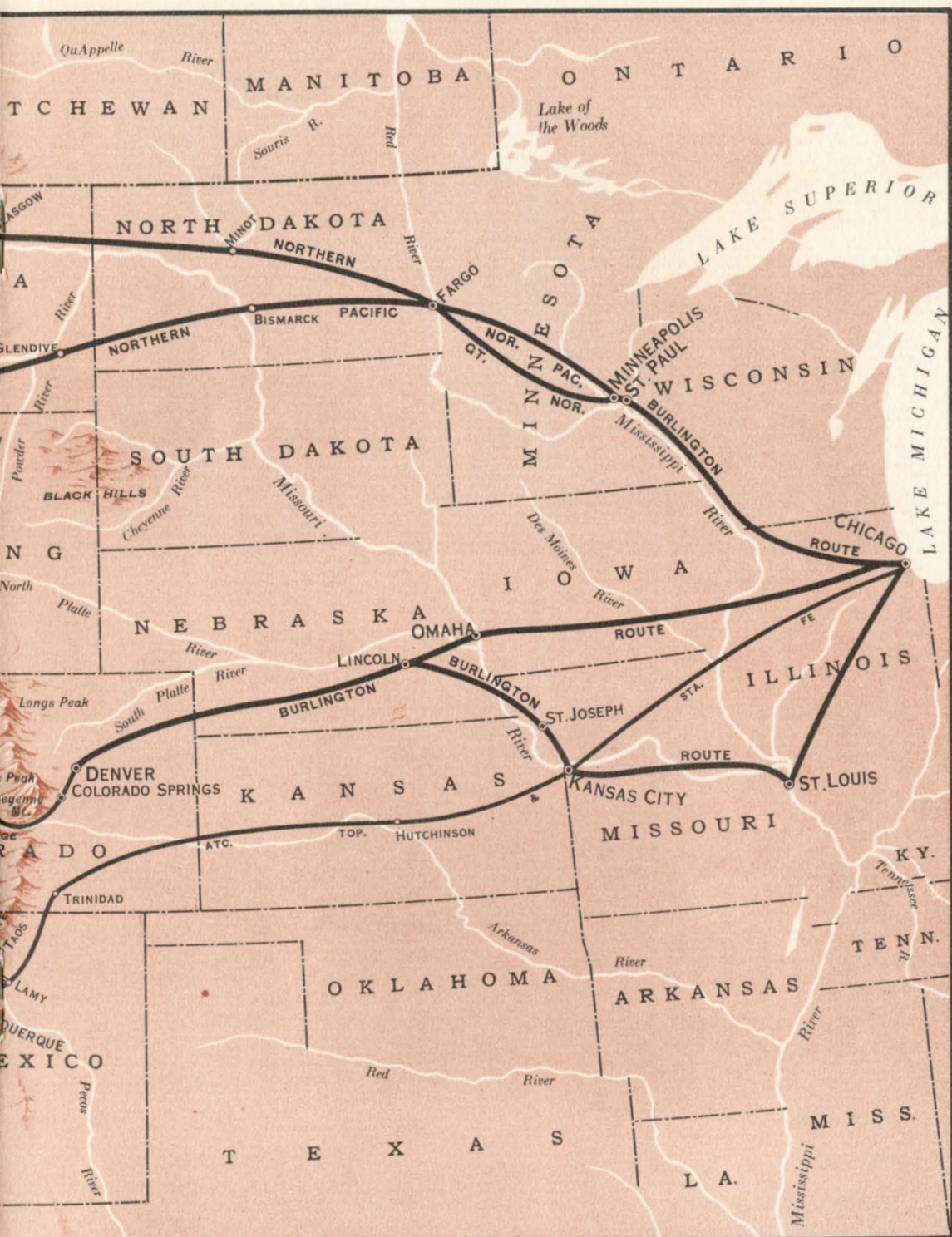
WEDNESDAY JULY 17—AUG. 14—During the day we cross the Gulf of Alaska, bounded by great snow-crowned peaks, and it is not unlikely that here we'll see a whale or two. (Continued on page 18.)



6814

3-7-'29

Map showing route of Burlington Escorted Tour



Hours to the Pacific Northwest and California



Seward looks across placid Resurrection Bay to a confusion of mountain magnificence typically Alaskan

THURSDAY JULY 18—AUG. 15—Cordova is reached about noon and we immediately transfer to a train for the trip inland to Childs Glacier and Miles Glacier on the Copper River.

FRIDAY JULY 19—AUG. 16—Continuing our voyage today we pause briefly at Valdez, then sail on for a thrilling close-up of the mighty Columbia Glacier. It is 300 feet high, a mile wide, 90 miles long and alive and moving. Great thousand-ton "fragments" of ice are continually breaking off the Glacier's facade and dropping with a resounding crash to float about in the sea as small icebergs. Needless to say we remain at a respectful distance away but yet glide close enough to enjoy the unusual sight.

SATURDAY JULY 20—AUG. 17—We have a few hours shore leave at Latouche before continuing on to Seward which is reached about noon. The afternoon and evening are

spent here and left open for fishing, boating, hiking, visiting the fur stores and other shops, etc.

SUNDAY JULY 21—AUG. 18—Today's program includes another rail trip to the interior and we leave Seward at 8:00 A.M. for a wonderful scenic ride on the Alaska Railroad via beautiful Kenai Lake, the shaft-like Placer River Canyon and the mountainous loop district to Spencer Glacier. Luncheon at the Glacier, returning to Seward in time to sail at 5:00 P. M.

MONDAY JULY 22—AUG. 19—Cruising through Prince Williams Sound, stopping again at Latouche and visiting several salmon cannery ports during the day.

TUESDAY JULY 23—AUG. 20—We see the great Columbia Glacier again today from a different viewpoint, pass Valdez in the morning and reach Cordova about noon with shore leave here until evening.



Seattle, great Northwest metropolis and world port looks across Puget Sound to the Olympic Range

WEDNESDAY JULY 24—AUG. 21—Passing through Orca Inlet to Cape Hinchinbrook for a fine view of Mt. St. Elias, reentering the "Inside Passage" in the afternoon.

THURSDAY JULY 25—AUG. 22—Several hours of shore leave at Juneau this morning before continuing southbound through Frederick Sound, Chatham Strait and Stikine Strait.

FRIDAY JULY 26—AUG. 23—After a short stop at Wrangell we sail on, our ship weaving its way in and out through the green isles enroute to Ketchikan.

SATURDAY JULY 27—AUG. 24—Crossing the International Boundary into Canadian water we proceed through Arthur Passage and Graham Reach to Millbank Sound with a masque ball aboard ship during the evening.

SUNDAY JULY 28 — AUG. 25 — Across Queen Charlotte Sound and through the Seymour Narrows and the Strait of Georgia.

MONDAY JULY 29—AUG. 26—Our ship should arrive in Seattle sometime Sunday night or Monday morning (depending upon the tide) and the party leaves Seattle for the east on the first available train.

TUESDAY JULY 30—AUG. 27—Enroute through Montana, again crossing the Continental Divide.

WEDNESDAY JULY 31—AUG. 28—Eastward through North Dakota and Minnesota.

THURSDAY AUG. 1—AUG. 29—If we leave Seattle Monday morning we reach Chicago at 9:25 A.M. today, but in the event the tide delays our arrival in Seattle and we leave there in the evening, we'll reach Chicago at 7:30 P.M. today.

COST OF ALASKA TOURS

Cost of complete tour from Chicago including rail ticket, Pullman accommodations, hotels, all meals, auto trips, and berth and meals on steamer to Alaska, but not including personal tips.

PULLMAN ACCOMMODATIONS	SEWARD TOURS S1 AND S3			SKAGWAY TOURS S2 AND S4		
	Saloon Deck Berths	Upper Deck Berths (See Note)	Upper Deck Berths (See Note)	B Deck Berths	A Deck Berths	C Deck Berths
Two in a lower berth (each).....	\$374.76	\$390.76	\$410.76	\$315.43	\$340.43	\$305.43
One in a lower berth.....	399.01	415.01	435.01	341.56	366.56	331.56
One in an upper berth.....	389.30	405.30	425.30	331.10	356.10	321.10
Two in a compartment (each)....	419.00	435.00	455.00	362.93	387.93	352.93
Two in a drawing room (each)...	436.50	452.50	472.50	381.55	406.55	371.55
Three in a drawing room (each)...	407.84	423.84	443.84	350.97	375.97	340.97

NOTE—On the Seward Tours upper deck berths are classified according to location on boat, a higher rate being charged for those located amidships.



The following rates will illustrate the cost from various Eastern points. These rates include rail transportation via Chicago, on standard routes, with Pullman to and from Chicago unless otherwise specified. *No meals or auto trips* are included until joining tour at Chicago or St. Paul. Rates subject to change without notice. Rates quoted include berth on saloon deck on Tours S1 and S3 and B deck berths on Tours S2 and S4.

	SEWARD TOURS S1 AND S3			SKAGWAY TOURS S2 AND S4		
	One in Lower	Two in Lower (Each)	One in Upper	One in Lower	Two in Lower (Each)	One in Upper
Baltimore, Md.....	\$455.66	\$423.16	\$442.65	\$398.21	\$363.83	\$384.45
Boston, Mass.....	474.37	439.99	460.60	416.92	380.66	402.40
Buffalo, N. Y.....	436.07	406.19	424.10	378.62	346.86	365.90
Cincinnati, Ohio.....	417.56	389.56	406.35	360.11	330.23	348.15
Cleveland, Ohio.....	421.86	393.86	410.65	364.41	334.53	352.45
†Des Moines, Iowa.....	377.51	357.01	369.30	319.81	297.44	310.85
Detroit, Mich.....	417.91	389.91	406.70	360.64	330.58	348.50
Indianapolis, Ind.....	411.91	383.91	400.70	354.46	324.58	342.50
*Kansas City, Mo.....	388.82	362.69	378.35	331.12	303.12	319.90
Louisville, Ky.....	413.96	385.96	402.75	356.51	326.63	344.55
†Milwaukee, Wis.....	385.06	364.56	376.85	327.36	304.99	318.40
Minneapolis, Minn.....	371.56	351.06	363.35	313.86	291.49	304.90
New York, N. Y.....	465.03	431.78	451.72	407.58	372.45	393.52
*Omaha, Neb.....	385.01	360.76	375.30	327.31	301.19	316.85
Philadelphia, Pa.....	458.35	425.85	445.34	400.90	366.52	387.14
Pittsburgh, Pa.....	430.72	401.97	419.21	373.27	342.64	361.01
St. Louis, Mo.....	406.51	378.51	395.30	439.36	409.48	427.40
St. Paul, Minn.....	371.56	351.06	363.35	313.86	291.49	304.90
Washington, D. C.....	455.66	423.16	442.65	398.21	363.83	384.45
	For berths on upper deck add \$16.00 to figures shown.			For berths on A deck add \$25.00 to figures given. For berths on C deck deduct \$10.00 from figures shown.		

*Join and leave tour at St. Paul.

†Join and leave tour at St. Paul. No Pullman included to or from St. Paul.

California via the Pacific Northwest

Leaving Chicago Sundays June 30, July 14, August 4

See Calendar Schedules, Page 26

Here is your chance to make a wonderful tour from the Great Lakes, across the northern tier of States and a dozen mountain ranges to Puget Sound; across the International Boundary into Canada, including a salt water trip from Vancouver to Seattle; then down the Pacific Coast 1500 miles to the Mexican Line and beyond, and back home via the Grand Canyon of Arizona and the colorful Southwest.

It will be seen that there is choice of two tours via different routes from St. Paul to Portland; and again a choice of two different tours beyond San Francisco.

TOURS G-O — {21 days} and G-P {28 days} via Burlington-Great Northern.

SUNDAY—1ST DAY—Leave Chicago 10:35 A.M. following along the Mississippi River for 300 miles this afternoon. Leave St. Paul 11:00 P.M.

MONDAY—2ND DAY—Wheeling across North Dakota and eastern Montana.

TUESDAY—3RD DAY—Arrive in Glacier National Park for a two-day visit amid the wildest confusion of mountain grandeur on the continent. Morning motor trip to Many Glacier Hotel in the heart of the alpine world for afternoon and overnight.

WEDNESDAY—4TH DAY—By Motor and boat to the charming chalets at the base of the sacred Going-to-the-Sun Mountain. Luncheon here, returning to Glacier Park Hotel late in the afternoon and leaving for the west at 7:53 P. M.

THURSDAY—5TH DAY—Through Spokane this morning and an all day trip through Washington featured by the crossing of the Cascade Mountains including the great Cascade Tunnel, and so to Bellingham for overnight at the Leopold Hotel.

FRIDAY—6TH DAY—Motor to Mt. Baker Lodge for the afternoon and overnight at a new and one of the most beautiful resorts you ever saw.

SATURDAY—7TH DAY—Leave Mt. Baker in the morning, motoring back to Bellingham and thence by train across the Canadian border, reaching Vancouver at 2:30 P.M. for the afternoon and overnight at the Hotel Georgia.

SUNDAY—8TH DAY—Leave Vancouver at 10:30 A.M. on a ship sailing across the

(Continued in left hand column Page 22)

TOURS N-O—{21 days} and N-P {28 days} via Burlington-Northern Pacific.

SUNDAY—1ST DAY—Leave Chicago at 10:35 A.M. for a pleasant daylight trip along the upper Mississippi River for 300 miles. Leave St. Paul 10:55 P. M.

MONDAY—2ND DAY—Crossing through the North Dakota grain belt, the badlands and eastern Montana.

TUESDAY—3RD DAY—Early risers this morning will be rewarded by the magnificent scenery of the Montana Rockies as the train circles down from Homestake Pass into Butte. We follow the rivers through the mountains all this day, arriving in Spokane about 6:00 P.M. for dinner and overnight at the Davenport Hotel.

WEDNESDAY—4TH DAY—A morning motor ride about Spokane, great metropolis of the Inland Empire, and another drive this afternoon to Hayden Lake and Lake Coeur d'Alene, returning to Spokane in time to leave at 6:30 P.M.

THURSDAY—5TH DAY—Through Seattle; northward along Puget Sound to the International Boundary and beyond—to Vancouver in Canada where we have an afternoon motor trip to see all the main points of interest. Overnight here at the Hotel Georgia.

FRIDAY — 6TH DAY — Leave Vancouver 10:30 A.M. on a boat which crosses the Strait of Georgia to Victoria where we have a motor ride while the boat waits; then across Puget Sound to Seattle, arriving there at 8:30 P.M. where we remain until Sunday morning with headquarters at the Olympic Hotel.

(Continued in right hand column Page 22)

TOURS G-O and G-P (*Continued*)

Strait of Georgia to Victoria for a sightseeing tour about this charming green city, and continuing in the afternoon down through Puget Sound, arriving Seattle at 8:30 P.M. for overnight at the New Washington Hotel.

MONDAY—9TH DAY—All day in Seattle, with a morning left open to do as we please and an afternoon trip by motor to see all the outstanding attractions. Leave at 11:45 P.M.

TUESDAY—10TH DAY—Arrive in Portland at 6:45 A.M. for a busy day of sightseeing divided between the thrilling Columbia River Highway and a tour 'round about the city which is world-famed for its wonderful display of roses. Leave Portland on the Southern Pacific at 9:30 P.M.

WEDNESDAY—11TH DAY—All day traveling through the foothills of the southern Cascade Range and the north part of the Sierra Nevada Mountains with towering Mt. Shasta in view most of the time.

THURSDAY—12TH DAY—Arrive in San Francisco at 7:30 A.M. for an open day in which to do as we please. Headquarters here are the St. Francis Hotel.

FRIDAY—13TH DAY—A free morning in which to visit the shops, followed by an afternoon motor trip embracing Golden Gate Park, the Presidio and other chief points of interest. Leaving at 10:30 P.M. on the Santa Fe on the way to Yosemite National Park.

TOURS N-O and N-P (*Continued*)

SATURDAY—7TH DAY—An open morning in which to do as we please, and a motor trip this afternoon visiting the parks, the campus of the University of Washington and other places of outstanding interest including Lake Washington to see ships from scores of foreign ports riding at anchor in the famous fresh water harbor.

SUNDAY—8TH DAY—Leave Seattle in the morning and motor to Rainier National Park for 24 hours in the charming flower-carpeted valley at the base of the wonderful snow-capped mountain.

MONDAY—9TH DAY—A busy morning here—horseback riding, climbing partway up the colossal peak, visiting the glistening ice caverns, "Nature coasting," etc., before departing in mid-afternoon for Tacoma for dinner and the evening.

TUESDAY—10TH DAY—Arrive Portland early this morning for a day of sightseeing by motor divided between the thrilling Columbia Highway and metropolitan Portland. Leave Portland on the Southern Pacific at 9:30 P.M.

WEDNESDAY—11TH DAY—Through southern Oregon and northern California with a famous landmark in sight almost all day—Mt. Shasta.

THURSDAY—12TH DAY—Arrive in San Francisco at 7:30 A.M. for an open day to do as we please with the St. Francis Hotel as headquarters.

FRIDAY—13TH DAY—Motoring 'round about San Francisco.

Beyond San Francisco two different tours are offered as follows:

TOURS G-O and N-O

SATURDAY—14TH DAY—Upon awakening this morning we find our special Pullmans at Merced, Calif., and right after breakfast we fare forth in motors through the wonderful fruit orchards and up into the mountains, spending the afternoon in the Mariposa Grove of Big Trees, then continuing on to Yosemite for the evening and overnight in the charming group of cottages known collectively as Yosemite Lodge.

TOURS G-P and N-P

SATURDAY—14TH DAY—An open morning, then an afternoon motor tour visiting Berkeley, University of California, Greek Theatre, Piedmont and Oakland. Leave San Francisco 10:30 P.M. via Santa Fe.

SUNDAY—15TH DAY—Breakfast at Merced, then up into the mountains for an afternoon in the Mariposa Grove of Big Trees, reaching Yosemite National Park 6:00 P.M.

MONDAY—16TH DAY—A full morning here—seeing Yosemite Falls, El Capitan



We go (literally) through the Mariposa Grove of Big Trees . . . California

TOURS G-O and N-O (*Continued*)

SUNDAY—15TH DAY—An entire morning here to enjoy whatever form of diversion appeals to you the most in this wonderland of peerless natural beauty. We leave Yosemite after luncheon and motor back to Merced—most of the way via a different route, board our Pullmans in mid-afternoon and wheel pleasantly southward through the fertile San Joaquin Valley. Fresno, world's raisin capital, is an interesting point on the way.

MONDAY—16TH DAY—And here we are in Los Angeles, for two precious days. We put up at the Alexandria Hotel and start presently on a motor ride that includes Pasadena, Hollywood, Beverly Hills and Santa Monica—a full day of sightseeing that keeps us on the go until late in the afternoon.

TUESDAY—17TH DAY—There is no special program today. Everybody is free to do as he pleases—go shopping, or make one of the many available trips—Catalina Island, Mt. Lowe, Mt. Wilson, Riverside, Universal City, the beaches, or what have you.

WEDNESDAY—18TH DAY—We leave for the east at 9:30 A.M. through the orange groves of the San Gabriel Valley and over

TOURS G-P and N-P (*Continued*)

and scores of other magnificent scenic attractions, motoring back to Merced in the afternoon, bound for Southern California.

TUESDAY—17TH DAY—From morning until 2:00 P.M. we spend a happy time at the Mission Inn at Riverside, continuing then to Los Angeles where we arrive at 4:30 P.M. and put up at the Alexandria Hotel.

WEDNESDAY—18TH DAY—Motoring almost all day through Pasadena, Hollywood, Beverly Hills and Santa Monica.

THURSDAY—19TH DAY—Across to Catalina Island—an all day ocean trip featured by a cruise in a glass bottom boat to see the wonderful submarine gardens.

FRIDAY—20TH DAY—An open day in which to carry out plans of our own choice. Leave at midnight for San Diego.

SATURDAY—21ST DAY—After breakfast we cross the Bay to Coronado Beach and motor down the Silver Strand to Mexico, stopping first at Tia Juana and then on for luncheon at the Agua Caliente Hotel with several hours here to enjoy this gay Mexican Monte Carlo. Back to the San Diego Hotel for overnight.

SUNDAY—22ND DAY—The morning is left open, but afternoon brings a motor trip through the residential section, Balboa Park and Point Loma. We board our Pull-



The Grand Canyon of Arizona . . . eighth wonder of the world

TOURS G-O and N-O (*Continued*)

the San Bernardino Range, entering Arizona early in the evening.

THURSDAY—19TH DAY—This is Grand Canyon day and a day of days from a sight-seeing standpoint. There's a morning motor trip around the rim of the colossal, colorful canyon the better to view this amazing spectacle from a variety of viewpoints. An Indian ceremony is part of the afternoon program, but don't miss the blazing glory of the sunset across the Grand Canyon. It's a sight you'll never forget.

FRIDAY—20TH DAY—We are really on the way home now, humming along through the painted desert country of New Mexico, and toward evening start climbing up over the Rockies once more.

SATURDAY—21ST DAY—The endless sea of wheat which greets our eyes this morning tells us we're in Kansas. We follow alongside the Arkansas River for many hours and about nightfall cross over into Missouri at Kansas City where the St. Louis contingent leaves the party.

SUNDAY—22ND DAY—Arrive Chicago at the Dearborn Station at 8:30 A.M., or St. Louis at 7:35 A.M.

TOURS G-P and N-P (*Continued*)

mans anytime after 10:00 P.M. and depart for the east after midnight.

MONDAY—23RD DAY—Riding through the orange country and over the San Bernardino Mountains crossing the Colorado River into Arizona early in the evening.

TUESDAY—24TH DAY—We reach the Grand Canyon early in the morning for a full day in which to enjoy the scenic splendor of this world's greatest chasm.

WEDNESDAY—25TH DAY—Across New Mexico, reaching Lamy late in the afternoon and boarding motors for old Santa Fe for overnight at LaFonda Hotel.

THURSDAY—26TH DAY—By motor to Taos to visit the famous pueblos inhabited by Indians—descendants of the cliff dwellers—and back to Santa Fe for overnight.

FRIDAY—27TH DAY—Seeing the prehistoric cliff dwellings of Puye, and the Tesuque and Santa Clara Indian villages, motoring back to Lamy late in the afternoon and boarding our Pullmans for home.

SATURDAY—28TH DAY—Crossing Kansas and reaching Kansas City at 8:30 P.M. where we bid adieu to the St. Louis members of our party.

SUNDAY—29TH DAY—Reach the Dearborn Station Chicago at 8:30 A.M., or St. Louis at 7:35 A.M.

COST OF PACIFIC NORTHWEST-CALIFORNIA TOURS

Cost of complete tours from Chicago, including Pullman accommodations, hotels, all meals and auto trips, but not including personal tips.

PULLMAN ACCOMMODATIONS	TOURS GO AND NO		TOURS GP AND NP	
	With Rail Ticket	Without Rail Ticket	With Rail Ticket	Without Rail Ticket
Two in a lower berth (each).....	\$336.53	\$219.11	\$435.78	\$312.36
One in a lower berth.....	373.53	256.11	476.66	353.24
One in an upper berth.....	358.72	241.30	460.30	336.88

The figures shown above under heading "Without Rail Ticket" are the tour costs for passengers joining tour at these points with through rail ticket purchased at home station.



The following rates will illustrate the cost from various Eastern points. These rates include rail transportation via Chicago, on standard routes, with Pullman to and from Chicago unless otherwise specified. *No meals or auto trips* are included until joining tour at Chicago or St. Paul. Rates subject to change without notice.

	TOURS GO AND NO			TOURS GP AND NP		
	Lower	Two in Lower (Each)	Upper	Lower	Two in Lower (Each)	Upper
Baltimore, Md.....	\$430.18	\$384.93	\$412.07	\$533.31	\$484.18	\$513.65
Boston, Mass.....	448.89	401.76	430.02	552.02	501.01	531.60
Buffalo, N. Y.....	410.59	367.96	393.52	513.72	467.21	495.10
Cincinnati, Ohio.....	392.08	351.33	375.77	495.21	450.58	477.35
Cleveland, Ohio.....	396.38	355.63	380.07	499.51	454.88	481.65
A)Des Moines, Iowa.....	353.29	320.04	339.98	455.67	418.92	441.56
Detroit, Mich.....	392.43	351.68	376.12	495.56	450.93	477.70
Indianapolis, Ind.....	386.43	345.68	370.12	489.56	444.93	471.70
c)Kansas City, Mo.....	355.96	319.90	341.52	458.34	418.78	443.10
Louisville, Ky.....	388.48	347.73	372.17	491.61	446.98	473.75
B)Milwaukee, Wis.....	368.23	333.10	354.17	471.36	432.36	455.75
D)Minneapolis, Minn....	361.11	325.05	346.67	463.49	423.93	447.65
New York, N. Y.....	439.55	393.55	421.14	542.68	492.80	522.72
c)Omaha, Neb.....	357.83	320.83	343.02	460.21	419.71	444.00
Philadelphia, Pa.....	432.87	387.62	414.76	536.00	486.87	516.34
Pittsburgh, Pa.....	405.24	363.74	388.63	508.37	462.99	490.21
E)St. Louis, Mo.....	375.40	337.09	360.07	477.78	435.97	471.25
D)St. Paul, Minn.....	361.11	325.05	346.67	463.49	423.93	448.25
Washington, D. C....	430.18	384.93	412.07	533.31	484.18	513.65

A) Join tour at St. Paul, leave at Kansas City. (No Pullman included except while with tour.)

B) Join tour at St. Paul. (No Pullman included except while with tour.)

C) Join tour at St. Paul, leave at Kansas City.

D) Leave tour at Kansas City.

E) Join tour at Chicago, returning to St. Louis.

Calendar Schedule of Pacific Northwest-California (Three Weeks) Tours

			GO 1	GO 2	GO 3				NO 1	NO 2	NO 3
Lv. Chicago	10:35 am	Sun.	June 30	July 14	Aug. 4	Lv. Chicago	10:35 am	Sun.	June 30	July 14	Aug. 4
Lv. St. Paul	10:55 pm	"	" 30	" 14	" 4	Lv. St. Paul	10:55 pm	"	" 30	" 14	" 4
Lv. Minneapolis	11:50 pm	"	" 30	" 14	" 4	Lv. Minneapolis	11:50 pm	"	" 30	" 14	" 4
Ar. Glacier Pk.	8:05 am	Tues.	July 2	" 16	" 6	Ar. Spokane	6:05 pm	Tues.	July 2	" 16	" 6
Lv. Glacier Pk.	7:53 pm	Wed.	" 3	" 17	" 7	Lv. Spokane	6:30 pm	Wed.	" 3	" 17	" 7
Ar. Bellingham	8:15 pm	Thur.	" 4	" 18	" 8	Ar. Seattle	7:00 am	Thur.	" 4	" 18	" 8
Ar. Mt. Baker	11:30 am	Fri.	" 5	" 19	" 9	Ar. Vancouver	2:30 pm	"	" 4	" 18	" 8
Lv. Bellingham	12:01 pm	Sat.	July 6	July 20	Aug. 10	Lv. Vancouver	10:30 am	Fri.	" 5	" 19	" 9
Ar. Vancouver	2:30 pm	Sat.	" 6	" 20	" 10	Ar. Victoria	3:00 pm	"	" 5	" 19	" 9
Lv. Vancouver	10:30 am	Sun.	" 7	" 21	" 11	Ar. Seattle	8:30 pm	"	" 5	" 19	" 9
Ar. Victoria	3:00 pm	"	" 7	" 21	" 11	Lv. Seattle	8:30 am	Sun.	" 7	" 21	" 11
Ar. Seattle	8:30 pm	"	" 7	" 21	" 11	Lv. Mt. Rainier	2:30 pm	Mon.	" 8	" 22	" 12
Lv. Seattle	11:45 pm	Mon.	" 8	" 22	" 12	Lv. Tacoma	1:30 am	Tues.	" 9	" 23	" 13
Ar. Portland	6:45 am	Tues.	" 9	" 23	" 13	Ar. Portland	6:45 am	"	" 9	" 23	" 13
Lv. Portland	9:30 pm	"	" 9	" 23	" 13	Lv. Portland	9:30 pm	"	" 9	" 23	" 13
Ar. San Fran'sco	7:30 am	Thur.	July 11	July 25	Aug. 15	Ar. San Fran'sco	7:30 am	Thur.	July 11	July 25	Aug. 15
Lv. San Fran'sco	10:30 pm	Fri.	" 12	" 26	" 16	Lv. San Fran'sco	10:30 pm	Fri.	" 12	" 26	" 16
Ar. Yosemite	7:00 am	Sat.	" 13	" 27	" 17	Ar. Yosemite	7:00 am	Sat.	" 13	" 27	" 17
Lv. Yosemite	3:36 pm	Sun.	" 14	" 28	" 18	Lv. Yosemite	3:36 pm	Sun.	" 14	" 28	" 18
Ar. Los Angeles	7:35 am	Mon.	" 15	" 29	" 19	Ar. Los Angeles	7:35 am	Mon.	" 15	" 29	" 19
Lv. Los Angeles	9:30 am	Wed.	" 17	" 31	" 21	Lv. Los Angeles	9:30 am	Wed.	" 17	" 31	" 21
Ar. Gd. Canyon	7:15 am	Thur.	" 18	Aug. 1	" 22	Ar. Gd. Canyon	7:15 am	Thur.	" 18	Aug. 1	" 22
Lv. Gd. Canyon	8:00 pm	Thur.	" 18	" 1	" 22	Lv. Gd. Canyon	8:00 pm	Thur.	" 18	" 1	" 22
Ar. Kansas City	8:30 pm	Sat.	" 20	" 3	" 24	Ar. Kansas City	8:30 pm	Sat.	" 20	" 3	" 24
Ar. Chicago	8:30 am	Sun.	" 21	" 4	" 25	Ar. Chicago	8:30 am	Sun.	" 21	" 4	" 25
Ar. St. Louis	7:35 am	Sun.	July 21	Aug. 4	Aug. 25	Ar. St. Louis	7:35 am	Sun.	July 21	Aug. 4	Aug. 25

Calendar Schedule of Pacific Northwest-California (Four Weeks) Tours

			GP 1	GP 2	GP 3				NP 1	NP 2	NP 3
Lv. Chicago	10:35 am	Sun.	June 30	July 14	Aug. 4	Lv. Chicago	10:35 am	Sun.	June 30	July 14	Aug. 4
Lv. St. Paul	10:55 pm	"	" 30	" 14	" 4	Lv. St. Paul	10:55 pm	"	" 30	" 14	" 4
Lv. Minneapolis	11:50 pm	"	" 30	" 14	" 4	Lv. Minneapolis	11:50 pm	"	" 30	" 14	" 4
Ar. Glacier Pk.	8:05 am	Tues.	July 2	" 16	" 6	Ar. Spokane	6:05 pm	Tues.	July 2	" 16	" 6
Lv. Glacier Pk.	7:53 pm	Wed.	" 3	" 17	" 7	Lv. Spokane	6:30 pm	Wed.	" 3	" 17	" 7
Ar. Bellingham	8:15 pm	Thur.	" 4	" 18	" 8	Ar. Vancouver	2:30 pm	Thur.	" 4	" 18	" 8
Ar. Mt. Baker	11:30 am	Fri.	" 5	" 19	" 9	Lv. Vancouver	10:30 am	Fri.	July 5	" 19	Aug. 9
Ar. Vancouver	2:30 pm	Sat.	" 6	" 20	" 10	Ar. Victoria	3:00 pm	Fri.	" 5	" 19	" 9
Lv. Vancouver	10:30 am	Sun.	" 7	" 21	" 11	Ar. Seattle	8:30 pm	"	" 5	" 19	" 9
Ar. Victoria	3:00 pm	"	" 7	" 21	" 11	Lv. Seattle	8:30 am	Sun.	" 7	" 21	" 11
Ar. Seattle	8:30 pm	"	" 7	" 21	" 11	Lv. Mt. Rainier	2:30 pm	Mon.	" 8	" 22	" 12
Lv. Seattle	11:45 pm	Mon.	" 8	" 22	" 12	Lv. Tacoma	1:30 am	Tues.	" 9	" 23	" 13
Ar. Portland	6:45 am	Tues.	" 9	" 23	" 13	Ar. Portland	6:45 am	"	" 9	" 23	" 13
Lv. Portland	9:30 pm	"	" 9	" 23	" 13	Lv. Portland	9:30 pm	"	" 9	" 23	" 13
Ar. San Fran'sco	7:30 am	Thur.	July 11	July 25	Aug. 15	Ar. San Fran'sco	7:30 am	Thur.	July 11	July 25	Aug. 15
Lv. San Fran'sco	10:30 pm	Sat.	" 13	" 27	" 17	Lv. San Fran'sco	10:30 pm	Sat.	" 13	" 27	" 17
Ar. Yosemite	7:00 am	Sun.	" 14	" 28	" 18	Ar. Yosemite	7:00 am	Sun.	" 14	" 28	" 18
Lv. Yosemite	3:36 pm	Mon.	" 15	" 29	" 19	Lv. Yosemite	3:36 pm	Mon.	" 15	" 29	" 19
Ar. Riverside	7:20 am	Tues.	" 16	" 30	" 20	Ar. Riverside	7:20 am	Tues.	" 16	" 30	" 20
Lv. Los Angeles	4:30 pm	"	" 16	" 30	" 20	Ar. Los Angeles	4:30 pm	"	" 16	" 30	" 20
Ar. Los Angeles	1:00 am	Sat.	" 20	Aug. 3	" 24	Lv. Los Angeles	1:00 am	Sat.	" 20	Aug. 3	" 24
Ar. San Diego	7:00 am	Sat.	" 20	" 3	" 24	Ar. San Diego	7:00 am	Sat.	" 20	" 3	" 24
Lv. San Diego	2:00 am	Mon.	" 22	" 5	" 26	Lv. San Diego	2:00 am	Mon.	" 22	" 5	" 26
Lv. Los Angeles	9:30 am	"	" 22	" 5	" 26	Lv. Los Angeles	9:30 am	"	" 22	" 5	" 26
Ar. Gd. Canyon	7:15 am	Tues.	" 23	" 6	" 27	Ar. Gd. Canyon	7:15 am	Tues.	" 23	" 6	" 27
Lv. Gd. Canyon	8:00 pm	"	" 23	" 6	" 27	Lv. Gd. Canyon	8:00 pm	"	" 23	" 6	" 27
Ar. Lamy	4:35 pm	Wed.	" 24	" 7	" 28	Ar. Lamy	4:35 pm	Wed.	" 24	" 7	" 28
(Indian Det.)						(Indian Det.)					
Lv. Lamy	4:45 pm	Fri.	" 26	" 9	" 30	Lv. Lamy	4:45 pm	Fri.	" 26	" 9	" 30
Ar. Kansas City	8:30 pm	Sat.	" 27	" 10	" 31	Ar. Kansas City	8:30 pm	Sat.	" 27	" 10	" 31
Ar. Chicago	8:30 am	Sun.	" 28	" 11	Sept. 1	Ar. Chicago	8:30 am	Sun.	" 28	" 11	Sept. 1
Ar. St. Louis	7:35 am	Sun.	July 28	Aug. 11	Sept. 1	Ar. St. Louis	7:35 am	Sun.	July 28	Aug. 11	Sept. 1

An Ocean Trip to Hawaii

For those who have the time, and desire to include an ocean voyage in their summer vacation plans, what could be more intriguing than a wonderful voyage across the Pacific to this vivid, wistful land, swathed in a cloak of semi-tropic coloring of flowers and foliage, yet perpetually fanned by gentle trade winds which give a springlike climate the year round, the islands offer a rich panorama of ever-changing vistas. A paradise of towering mountains and soft velvety valleys; palm-fringed beaches against which the warmest and friendliest of oceans forever croons softly; magnificent palis (cliffs) and jade and sapphire seas; riotous, swashbuckling colors in trees and shrubs and flowers enchant the visitor at every turn.

See how readily a trip to the "Paradise Isles" (from Portland to Honolulu—returning to San Francisco, via steamers of the Matson Navigation Co.) can be made in connection with your trip to the Pacific Northwest and California.

Hawaiian Tour No. 1

JUNE 30—Leave Chicago 10:35 A. M. Traveling with either tour NO-1 or GO-1 (see day-by-day schedule page 21), to departure Portland Tuesday, July 9.

JULY 10 & 11—In Portland.

JULY 12—Leave Portland 12:00 noon, "SS. Wilhelmina."

JULY 20—Arrive Honolulu 8:00 A.M. Day spent getting located and visiting around Honolulu.

JULY 21-24—At Honolulu with auto trips around the Island of Oahu and to Mt. Tantalus with plenty of time open for the many forms of recreation available here, such as swimming, boating, fishing, horse-back riding, tennis, golf, etc.

JULY 25—Leave Honolulu "SS Maui" for the Island of Hawaii where two days will be spent visiting Hilo, the Hamakua Coast and Kilauea Volcano, spending a night at the Volcano House near the Crater.

JULY 28—Arrive Honolulu 8:00 A.M. The next five days will be spent in and around Honolulu.

AUG. 2—Leave Honolulu on the majestic new steamer "SS. Malolo" for San Francisco.

AUG. 7—Arrive San Francisco 8:00 A.M. From San Francisco back to Chicago you have your choice of either of the following tours:

TOUR "G-O" including one day in San Francisco, two days Yosemite, two days Los Angeles, returning on the Santa Fe via the Grand Canyon, arriving in Chicago Sunday, August 18. (See day-by-day schedule on Page 22.)

TOUR "G-P" including two days in San Francisco, two days Yosemite, Riverside, Los Angeles for three days, San Diego for two days returning via the Grand Canyon, including two days Indian-detour, arriving in Chicago Sunday, August 25. (See day-by-day schedule on Page 22.)

The costs of these tours, including all necessary expenses from Chicago returning to Chicago, with the exception of additional expenses necessary at Portland from Tuesday night until Friday noon, and San Francisco from Wednesday morning until Thursday afternoon, are as follows:

RATES

	Returning with TOUR "G-O"	Returning with TOUR "G-P"
One person occupying a lower berth.....	\$738.90	\$821.53
Two persons occupying a lower berth (each)	\$705.71	\$784.47
One person occupying an upper berth.....	\$725.62	\$806.70

The above rates include rail tickets from Chicago with minimum accommodations on the boat, and lodging and meals at the Seaside Hotel at Honolulu. Other accommodations on steamer are available at higher rate.

The Escort with the rail tour does not go to Hawaii, the boat and Island trips being under the supervision of the Matson Navigation Company.

Any representative shown on page 32 will be very glad to furnish additional information and complete your arrangements for this, or any other Hawaiian Tour.



Mt. Baker Lodge . . . newest and one of the most inviting of the Pacific Northwest mountain resorts

Connecting Tours to Alaska

While we have four tours to Alaska, planned and personally conducted from start to finish, it will be seen that we have several more tours to the Pacific Northwest, and it is entirely practicable to supplement any of these with an independent boat trip to Alaska. You accompany any one of the "N" Tours to Seattle then go independently to Alaska and upon your return, join any subsequent "N" Tour for the homeward journey.

For your convenience we outline below the Alaska Tours offered by the principal boat lines operating from Seattle.

ALASKA S. S. CO.

TO SEWARD from Seattle 9:00 A.M. every Saturday, with stops at Ketchikan, Wrangell, Juneau, Cordova, Valdez, Columbia Glacier, Latouche and Seward.

On these sailings there are offered interior trips, i. e., Golden Belt Line Tours to Anchorage, Mt. McKinley Park, and Fairbanks, and the Richardson Highway, also Copper River-Keystone Canyon Tours to Kennecott and Chitina.

TO SKAGWAY from Seattle 9:00 P.M. every Tuesday with stops at Ketchikan, Wrangell, Petersburg, Taku Glacier, Juneau, and Haines.

On these sailings there are offered interior rail trips via White Pass & Yukon to Bennett, B. C.

Any representative shown on Page 32 will be glad to furnish detailed information about any kind of an Alaskan trip, and also arrange for your reservations.

THE ADMIRAL LINE

TO SKAGWAY from Seattle 10:00 A.M. June 28, July 9-19-30, August 9-20, via "SS. Dorothy Alexander" with stops at Victoria, Ketchikan, Sitka, Skagway, Juneau, Taku Glacier and Wrangell.

On these sailings there are offered interior rail trips via White Pass and Yukon to Bennett, B. C.

TO SEWARD from Seattle 10:00 A.M. June 26, July 10-17-31, August 7-21 with stops at Ketchikan, Petersburg, Juneau, Yakutat, Cordova, Columbia Glacier, Latouche, Seward, Seldovia, and Kodiak.

On these sailings interior rail trip could be made from Seward to Mt. McKinley Park and Fairbanks, while steamer is continuing to Kodiak and return.

Ticket Routings for Various Tours

PACIFIC NORTHWEST

TOUR N—Destination *Portland*. Burlington Route, Chicago to St. Paul—Northern Pacific to Portland—returning, Spokane, Portland and Seattle Ry. to Spokane—Great Northern to St. Paul—Burlington Route to Chicago, with side trip coupons from Seattle to Vancouver and return, going via the Great Northern, returning via the C. P. S. S.

ALASKA TOURS

TOUR S-1—Destination *Portland*. Burlington Route, Chicago to St. Paul—Northern Pacific to Spokane—Spokane, Portland & Seattle Ry. to Portland—returning, Great Northern to St. Paul—Burlington Route to Chicago.

TOUR S-2—Destination *Portland*. Burlington Route, Chicago to St. Paul—Great Northern to Portland—returning, Spokane, Portland & Seattle Ry. to Spokane—Northern Pacific to St. Paul—Burlington Route to Chicago, with side trip coupon via the Great Northern, Seattle to Vancouver and return.

TOUR S-3—Destination *Portland*. Burlington Route, Chicago to St. Paul—Great Northern to Spokane—Spokane, Portland & Seattle Ry. to Portland—returning, Northern Pacific to St. Paul—Burlington Route to Chicago.

TOUR S-4—Destination *Portland*. Burlington Route, Chicago to St. Paul—Northern Pacific to Portland—returning, Spokane, Portland & Seattle Ry. to Spokane—Great Northern to St. Paul—Burlington Route to Chicago, with side trip coupon via the Great Northern, Seattle to Vancouver and return.

PACIFIC NORTHWEST AND CALIFORNIA

TOUR G-O—Destination *San Francisco*. Burlington Route, Chicago to St. Paul—Great Northern to Portland (with side trip coupons Seattle to Vancouver and return, going Great Northern, returning Canadian Pacific S. S.)—Southern Pacific to San Francisco—returning Santa Fe Lines, San Francisco to Los Angeles—Santa Fe Lines, Los Angeles to Chicago or Santa Fe Lines to Kansas City and Burlington Route to St. Louis, with side trip coupons Williams to Grand Canyon and return.

TOUR N-O—Destination *San Francisco*. Burlington Route, Chicago to St. Paul—Northern Pacific to Portland (with side trip coupons Seattle to Vancouver and return—going Great Northern, returning Canadian Pacific S. S.)—Southern Pacific to San Francisco—returning, Santa Fe Lines, San Francisco to Los Angeles—Santa Fe Lines, Los Angeles to Chicago or Santa Fe Lines to Kansas City and Burlington Route to St. Louis, with side trip coupons Williams to Grand Canyon and return.

TOUR G-P—Destination *San Francisco*. Burlington Route, Chicago to St. Paul—Great Northern to Portland (with side trip coupons Seattle to Vancouver and return, going Great Northern, returning Canadian Pacific S. S.)—Southern Pacific to San Francisco—returning, Santa Fe Lines, San Francisco to Los Angeles—Santa Fe Lines, Los Angeles to Chicago or Santa Fe Lines to Kansas City and Burlington Route to St. Louis, with side trip coupons Los Angeles to San Diego and return, and Williams to Grand Canyon and return.

TOUR N-P—Destination *San Francisco*. Burlington Route, Chicago to St. Paul—Northern Pacific to Portland (with side trip coupons Seattle to Vancouver and return, going Great Northern, returning C. P. S. S.)—Southern Pacific to San Francisco—returning, Santa Fe Lines, San Francisco to Los Angeles—Santa Fe Lines, Los Angeles to Chicago or Santa Fe Lines to Kansas City and Burlington Route to St. Louis, with side trip coupons Los Angeles to San Diego and return, and Williams to Grand Canyon and return.

Tickets issued to passengers making Hawaiian tour No. 1 should not include coupon from Portland to San Francisco via Southern Pacific.

INFORMATION

Children's Rates

Rates for children will be based on age and accommodations desired for them.

Hotels

At all hotels (except in Yellowstone) rooms with bath are provided on basis of two persons to a room. Single rooms can be had (except in Yellowstone and Glacier) at extra charge.

Under Escort

Each tour will be under escort of a well informed experienced railroad representative to relieve passengers of all details and smooth the way to a memorable carefree vacation.

Reservation

Request for reservation should give name and residence address of each passenger, and where more than one in party, how to be berthed on train and at hotels, stating relationship with ages of children if any. Deposit of \$25 from each passenger is necessary to hold reservation. Final payment must be made at least seven days before tour leaves.

Reservations may be secured by application to representatives shown on page 32 or any other Burlington Route, Northern Pacific or Great Northern representative, or by application to J. G. Delaplaine, Manager, Burlington Escorted Tours, 547 West Jackson Blvd., Chicago, Ill.

Mail and Telegrams

Mail and telegrams for members of these tours should be addressed to the hotels as shown in the day-to-day itinerary, and marked c/o Burlington Escorted Tours.

Purchase Through Rail Ticket

Passengers starting from Eastern points are advised to purchase through railroad ticket at their home station, thus obtaining the full benefit of the round trip excursion fares, being particular to see that their tickets are routed as shown on page 29.

Stopover

Those desiring to make longer stay on Pacific Coast may leave one tour at any point and join a subsequent tour, but arrangement must be made at time of booking.

Descriptive Literature

Bear in mind that this booklet concerns mainly Burlington Escorted Tours to the Pacific Northwest and Alaska.

We have a special booklet treating with Tours to California and another booklet (of 64 pages and beautifully illustrated in colors) dealing with Burlington Escorted Tours to Glacier National Park, Magic Yellowstone, Colorado and Rocky Mountain National (Estes) Park, the Black Hills of South Dakota, etc.

We shall be pleased to mail them to you upon request, free of charge, together with any of the following booklets treating with specific vacation places and areas:

Yellowstone Park
Glacier Park
Rocky Mountain National—
(Estes Park)
Rainier National Park

Scenic Colorado
The Cody Road
The Mississippi River
Scenic Line

Alaska
Pacific Northwest
Black Hills
California
Mt. Baker



Tacoma . . . famed "city with a mountain in its back yard"

RESERVATION BLANK

Please make reservation for parties listed below joining Tour

at Date

Name Address City and State

Requiring Pullman space checked (X) below.

Lower ☐ Two in lower ☐ Compartment ☐

Upper ☐ Section ☐ Drawing-room ☐

Yellowstone Tour specify ☐ Lodges ☐ Hotels

SKAGWAY

SEWARD

Alaska Tour specify { ☐ "A" deck
☐ "B" deck
☐ "C" deck

☐ Upper deck

☐ Saloon deck

REMARKS:

(Sign here)

Address

Detach and send to any representative shown on Page 32 or to J. G. Delaplaine, Manager
 Burlington Escorted Tours, 547 W. Jackson Blvd., Chicago, Ill.

"Burlington Escorted Tours" Representatives

CITY	ADDRESS	REPRESENTATIVE AND TITLE	RAILROAD
Atchison, Kan.....	Second and Main Sts.....	B. G. McCarty, Commercial Agent.....	Burlington
Atlanta, Ga.....	516 Healey Bldg.....	H. R. Todd, General Agent.....	Burlington
Boston, Mass.....	294 Washington St.....	F. F. Johnson, General Agent.....	Burlington
	80 Boylston St.....	J. H. Kenney, New England Pass'r Agent.....	Great Northern
	236 Old South Bldg.....	G. L. Brooks, Dist. Pass'r Agent.....	Northern Pacific
Buffalo, N. Y.....	200 Ellicott Sq.....	C. W. Beardsell, Trav. Pass'r Agent.....	Northern Pacific
	683 Ellicott Sq.....	Geo. Eighmy, Jr., Dist. Pass'r Agent.....	Great Northern
Burlington, Iowa.....	Burlington Bldg.....	J. J. Teeter, Div. Pass'r Agent.....	Burlington
		(S. J. Owens, Gen'l Agent Pass'r Dept.....	Burlington
Chicago, Ill.....	179 W. Jackson St.....	Emma W. Bock, Chicago Rep.....	Burlington Tours
	73 E. Jackson Blvd.....	M. E. Harlan, Gen'l Agent Pass'r Dept.....	Northern Pacific
	113 South Clark St.....	E. H. Moot, Gen'l Agent Pass'r Dept.....	Great Northern
Cincinnati, Ohio.....	503 Dixie Terminal Bldg.....	J. C. Boyer, General Agent.....	Burlington
	609 Traction Bldg.....	J. H. Brinkman, General Agent.....	Great Northern
	507 Chamber of Com. Bldg.....	R. H. McCarty, Gen'l Agent Pass'r Dept.....	Northern Pacific
Cleveland, Ohio.....	406 Hippodrome Bldg.....	E. H. Smith, General Agent.....	Burlington
	806 Hippodrome Bldg.....	Willard Adamson, General Agent.....	Northern Pacific
	507 Hippodrome Bldg.....	F. L. Cobb, Dist. Pass'r Agent.....	Great Northern
Clinton, Iowa.....	404 Wilson Bldg.....	W. A. Carlson, Commercial Agent.....	Burlington
Council Bluffs, Iowa.....	25 Pearl St.....	J. E. Swan, Commercial Agent.....	Burlington
Dallas, Texas.....	701 Kirby Bldg.....	C. W. Andrews, General Agent.....	Burlington
	1004 Southwestern Life Bldg.....	I. H. Turner, Southwestern Pass'r Agent.....	Great Northern
	903 Southwestern Life Bldg.....	Chas. Sorg, Jr., Southwestern Agent.....	Northern Pacific
Davenport, Iowa.....	Front and Harrison Sts.....	M. H. Teed, Ticket Agent.....	Burlington
Des Moines, Iowa.....	505 Locust St.....	D. A. Coffeen, City Pass'r Agent.....	Burlington
	216 Equitable Bldg.....	Neil Baird, Dist. Pass'r Agent.....	Northern Pacific
	305 Equitable Bldg.....	W. M. Romine, Dist. Pass'r Agent.....	Great Northern
Detroit, Mich.....	708 Transportation Bldg.....	F. L. Gannaway, General Agent.....	Burlington
	Lobby, Transportation Bldg.....	H. B. Schuette, General Agent.....	Great Northern
	1006 Transportation Bldg.....	Geo. Barnes, General Agent.....	Northern Pacific
Galesburg, Ill.....	Burlington Station.....	C. I. Tryman, Div. Pass'r Agent.....	Burlington
Hannibal, Mo.....	208 S. Main St.....	Paul Anderson, Div. Pass'r Agent.....	Burlington
Indianapolis, Ind.....	910 Merchants Bank Bldg.....	O. G. Hagemann, General Agent.....	Burlington
Jacksonville, Fla.....	510 Graham Bldg.....	T. H. Harrison, District Pass'r Agent.....	Burlington
Kansas City, Mo.....	Seventh and Walnut Sts.....	H. S. Jones, Gen'l Agent Pass'r Dept.....	Burlington
	116 Railway Exchange.....	F. A. Acker, General Agent.....	Northern Pacific
	516 Railway Exchange.....	V. E. Jones, Gen'l Agent Pass'r Dept.....	Great Northern
Keokuk, Iowa.....	Fifth and Johnson Sts.....	A. C. Maxwell, Div. Pass'r Agent.....	Burlington
Leavenworth, Kan.....	Fifth and Choctaw Sts.....	S. E. Nirdlinger, Commercial Agent.....	Burlington
Lincoln, Neb.....	142 S. Thirteenth St.....	H. P. Kaufman, City Pass'r Agent.....	Burlington
Milwaukee, Wis.....	221 Wisconsin Ave.....	F. D. Hunter, General Agent.....	Burlington
	1126 First Wis. National Bank Bldg.....	R. L. Kelly, General Agent.....	Northern Pacific
	812 Majestic Bldg.....	E. A. Fradenburgh, General Agent.....	Great Northern
Minneapolis, Minn.....	50 S. Sixth St.....	J. E. Lynn, Gen'l Agent, Pass'r Dept.....	Burlington
	522 Second Ave., South.....	G. F. McNeill, Ass't Gen'l Pass'r Agent.....	Northern Pacific
	524 Second Ave., South.....	R. C. Michkils, Gen'l Agent Pass'r Dept.....	Great Northern
New Orleans, La.....	708 Common St.....	G. B. Magruder, General Agent.....	Burlington
New York City.....	280 Broadway.....	W. S. Dewey, General Agent.....	Burlington
	560 Fifth Ave.....	H. M. Fletcher, Ass't Gen'l Pass'r Agent.....	Northern Pacific
	595 Fifth Ave.....	M. M. Hubbert, Gen'l Eastern Pass'r Agent.....	Great Northern
Omaha, Neb.....	300 S. Sixteenth St.....	J. W. Sharpe, Gen'l Agent Pass'r Dept.....	Burlington
Peoria, Ill.....	301 S. Jefferson Ave.....	H. D. Page, General Agent.....	Burlington
Philadelphia, Pa.....	1401 Fidelity-Phila. Tr. Bldg.....	H. K. Miles, General Agent.....	Burlington
	504 Finance Bldg.....	E. H. Whitlock, Dist. Pass'r Agent.....	Great Northern
	926 Fidelity-Phila. Tr. Bldg.....	B. M. Decker, General Agent.....	Northern Pacific
Pittsburgh, Pa.....	605 Park Bldg.....	W. V. Taffner, General Agent.....	Burlington
	518 Park Bldg.....	W. H. Millard, General Agent.....	Northern Pacific
	206 Oliver Bldg.....	P. H. Yorke, General Agent.....	Great Northern
Quincy, Ill.....	513 Hampshire St.....	B. R. Newlon, Div. Pass'r Agent.....	Burlington
St. Joseph, Mo.....	110 S. Fifth St.....	J. D. Baker, Div. Pass'r Agent.....	Burlington
		(C. B. Ogle, Gen'l Agent Pass'r Dept.....	Burlington
St. Louis, Mo.....	416 Locust St.....	P. O. Bolerjack, St. Louis Rep.....	Burlington Tours
	517 Boatmen's Bank Bldg.....	J. M. Sanford, General Agent.....	Great Northern
	540 Boatmen's Bank Bldg.....	R. K. Cross, General Agent.....	Northern Pacific
St. Paul, Minn.....	226 Railroad Bldg.....	B. W. Wilson, Dist. Pass'r Agent.....	Burlington
	Railroad Bldg.....	M. R. Johnson, City Pass'r Agent.....	Northern Pacific
	4th and Jackson Sts.....	A. L. Johnston, City Pass'r Agent.....	Great Northern
Sioux City, Iowa.....	516 Nebraska St.....	P. J. Donohue, General Agent.....	Great Northern—Burlington
Toronto, Ont.....	507 Royal Bank Bldg.....	H. E. Watkins, General Agent.....	Great Northern

J. G. DELAPLAINE

Manager Burlington Escorted Tours

347 W. Jackson Blvd., Chicago, Illinois

