

HORSE-SENSE

Burlington
Route



Burlington
Route



Bridling. With the rope around your horse's neck, slip the bit into his mouth, the bridle over his ears, and buckle the throat latch.



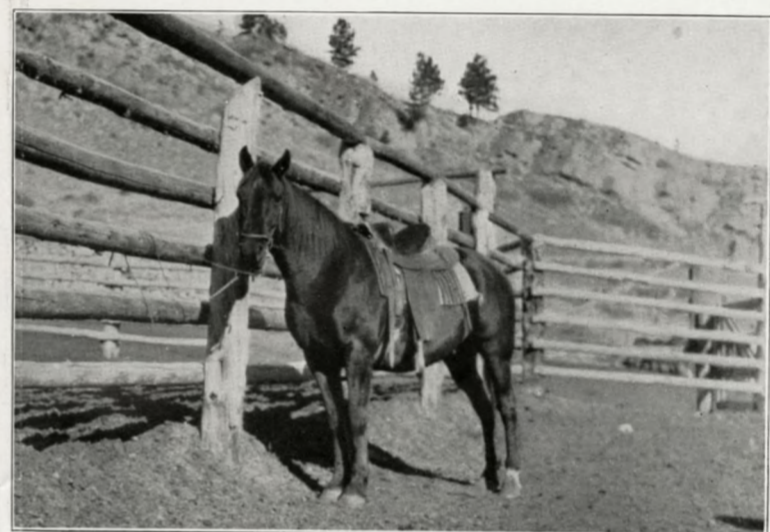
Ready to saddle. Notice that the saddle is placed on its side on the ground to keep the inner side of the saddle dry and clean and the skirts from rolling—blanket on top.



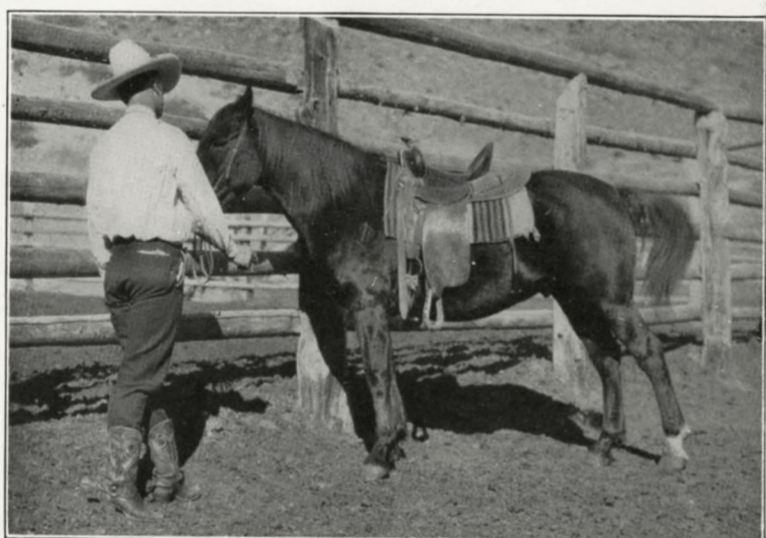
Hold your saddle like this, keeping the reins in your left hand, for the horse may step forward when he sees the saddle coming.



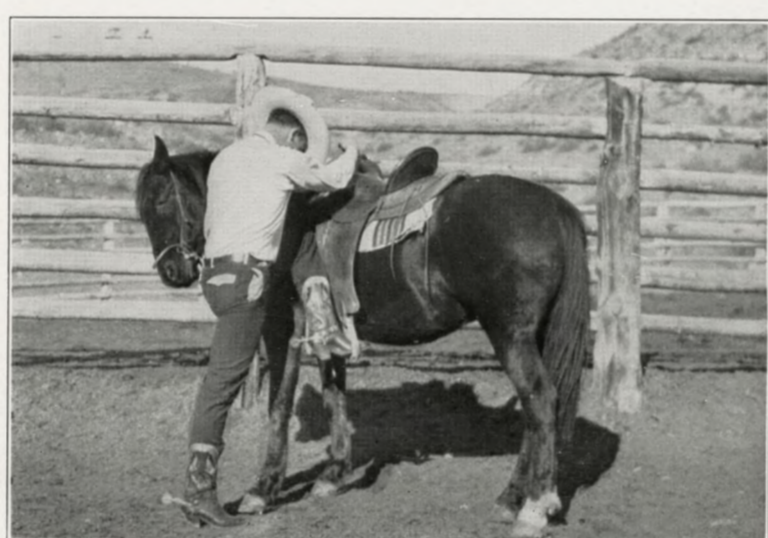
Ready to draw the latigo through the cinch ring, always keeping the reins in your left hand.



Properly saddled and tied, with reins wrapped around the pole. If the horse should be frightened and pull back suddenly, the reins will give slightly but not break.



Approach your horse slowly, keeping away from his heels—untie, lead him forward a few steps.



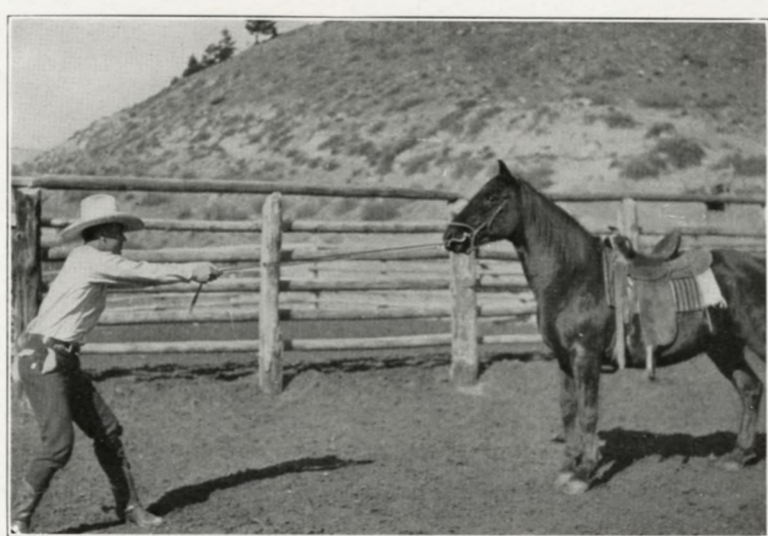
And mount, standing well forward, reins in your left hand, grasping horn of saddle with your right. Notice position of foot in the stirrup. Do not touch the cantle while mounting.



Properly mounted. Notice position of foot in the stirrup—heels down.



To lead your horse—turn your back to him and walk away with the reins in your hand.

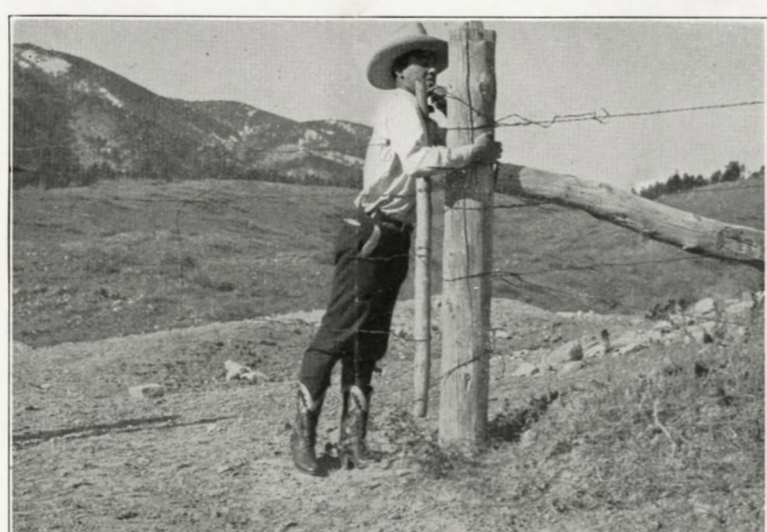


If you look him in the eye and pull, he will probably set his front legs and refuse to move.



The western way to guide a horse—neck reining. Pressure of the left rein against his neck will turn him to the right, and vice versa. All horses are trained to guide this way.

The Missouri Gate. If it is tight and hard to close, use your shoulder, as in the illustration, and it will close easily.



If at any time it should be necessary to pick up one of your horse's hind feet, approach him as shown here. Always keep the rein in your left hand and stay away from his heels.

