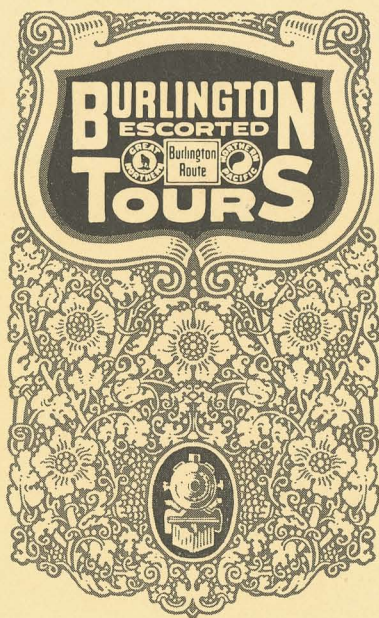


BURLINGTON
ESCORTED
TOURS



Glacier
Yellowstone
Rocky Mountain
and Rainier
National Parks
Colorado
California
Black Hills *and* Alaska

Vacations without a Care



GLACIER
YELLOWSTONE
ROCKY MOUNTAIN
and RAINIER
NATIONAL PARKS

~
COLORADO
CALIFORNIA
BLACK HILLS
ALASKA

1928



Big Thompson Canyon
Rocky Mountain National Park



VACATIONS WITHOUT A CARE

THE National Parks of the Scenic Rockies each successive year are making a more vibrant appeal to tourists and vacation travelers. Each of these National Parks — Yellowstone in Wyoming, Glacier in Montana, Rocky Mountain (Estes) in Colorado — utterly different, one from the other, are visited during the summer by thousands of Americans who want to see and comprehend the big West — its rich agricultural areas, its varied landscape, its splendid modern cities and above all the scenic wealth of the Rockies with their majestic skylines and masses of the Continental Divide stretching from Pikes Peak in Colorado, through these three National Parks to the International Boundary beyond Glacier. Yellowstone, Glacier and Rocky Mountain National (Estes) Parks are the three brilliant display regions of the great Rocky Range. They are the triple lure for a half million summer sight-seers.

The associated railroads, Burlington Route, Great Northern and Northern Pacific — because of a fortunate geographical location, serve the entire Rocky Mountain area, and are the principal carriers of summer vacationists. Year by year their service had been augmented to care for the increasing annual pilgrimage to the world's greatest mountain recreation land. New Pullman routes were instituted, whole new trains were added, and a vast interwoven fabric of vacation travel facilities perfected which made possible the creation of a systematic Rocky Mountain *touring plan* for the convenience of the vacation public.

Under the name "Burlington Escorted Tours" this plan was made effective in 1925.

The tours were a success from the very outset. That they have been popular with the vacation public is amply attested by the fact that each successive season has witnessed a greatly increased number of enthusiastic patrons.

The Tours leave Chicago and St. Louis on certain days every week, making comprehensive circuits embracing combinations of the National Parks of the Rocky Mountains; following a definite schedule all the way through, with a completely pre-arranged program carefully planned — all at a given price known beforehand, including railroad fare, Pullman and automobile transportation, lodging, meals in dining cars and at hotels, sight-seeing, complete National Park Tours — in fact all items of necessary expense, leaving the way clear to a carefree, wholly enjoyable vacation experience *sans* worry, bother, travel detail, tickets to fuss with, time tables to read, baggage to check, plans to make.



*Grand Canyon and Great Fall
of the Yellowstone*
© Gifford



In charge of each tour is an experienced railroad representative who is at once an escort and a business manager, taking care of all travel details.

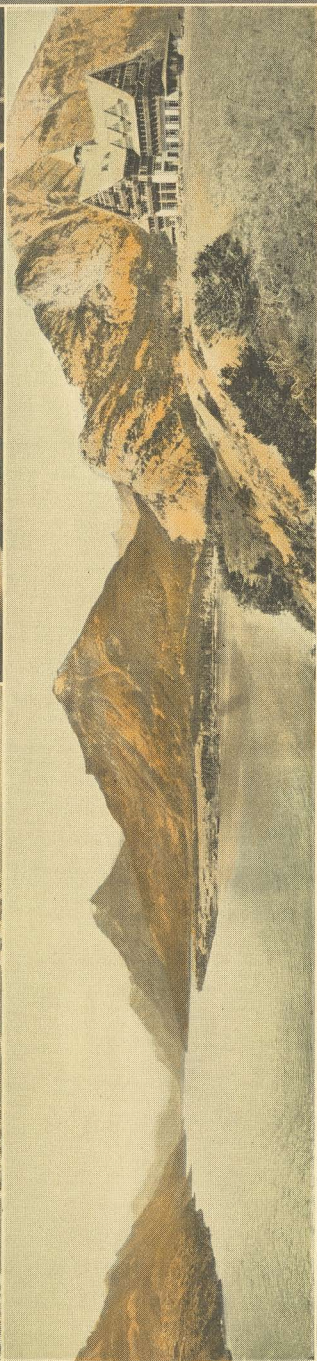
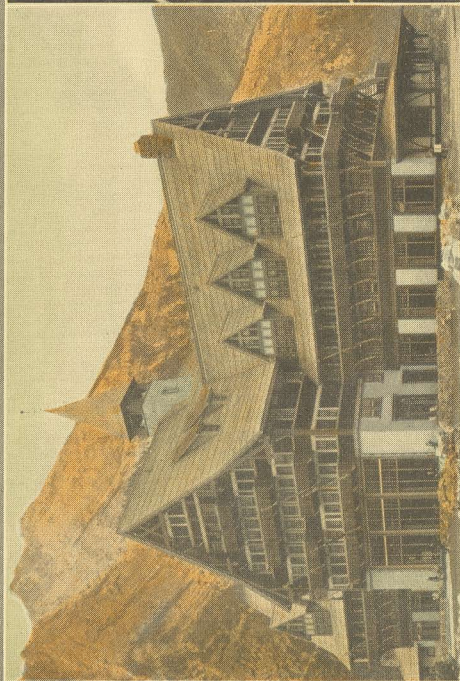
The total charge for the several tours may be fairly regarded as the lowest possible figure consistent with strictly first-class service throughout and with a vacation plan embracing the most attractive features which it is possible to manage in the time allowed.

It is axiomatic that the most successful business enterprises are those which are the best planned and this is usually just as true as to vacations. But too often busy business men and women do not have the time to prepare vacation plans with the same care, judgment and perception which characterizes the conduct of their business affairs. Others may not fully appreciate the value, not to say the necessity, of a thoroughly planned trip. To still others a vacation comes at an unexpected time, leaving little opportunity to make adequate arrangements. And finally, there are a good many who, because of a certain degree of timidity about asking questions or traveling alone, spend their vacation close to home without coming anywhere near to realizing the maximum of rest, recreation and enjoyment possible to a vacation.

The number of people who fall into one or another of these classifications — folks who fail to make the best use of their vacation time because they miss a lot they didn't know was there, or who spend more time and money than is really necessary, or who for one reason or another forego a trip in favor of a stay-at-home vacation — runs into many thousands, and to these especially we believe *Burlington Escorted Tours* will come as a friendly aid in the happy solution of the vacation problem.

We do not mean to imply that you cannot, with your family or friends, "go it alone" and have a fine time. You can, of course. Nor do we intend that the operation of these tours shall in any way supplant or change the familiar structure of through-route train service commonly afforded by these railroads. On the contrary, we wish to make it clear that the tours rather represent a new and efficient travel service quite in addition thereto.

What we do hope and believe is that the idea of a comprehensive vacation trip, planned by railroad organizations thoroughly familiar with the regions to be visited — a trip embracing the features you'd naturally want to see and omitting the commonplace and the duplications — a tour, in short, in which every hour is employed to the best advantage, and all at a cost known beforehand — should make a strong appeal to people to whom a vacation comes but once a year, and when it does come is limited to two fleeting weeks or a little more.



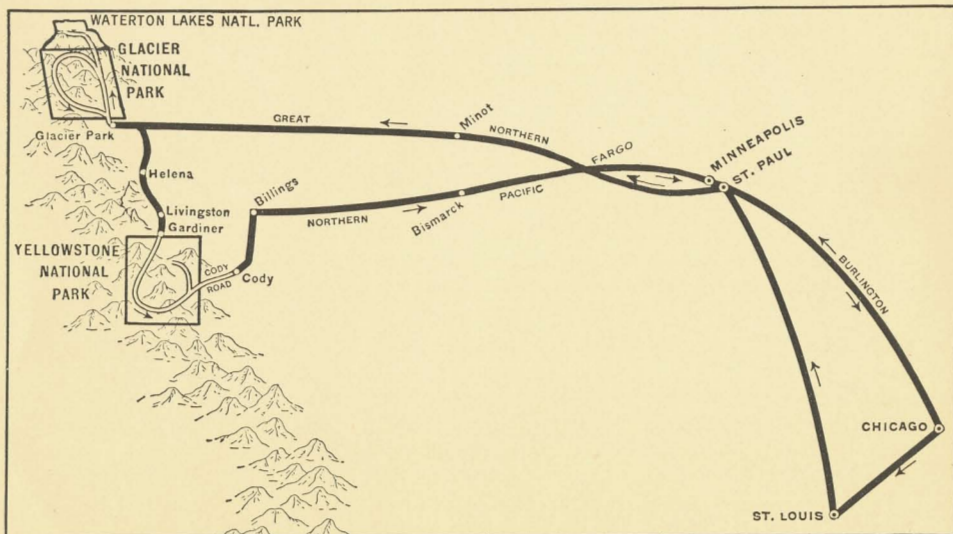
*The Prince of Wales Hotel in the new
Waterton Lakes National Park in Canada*
© Hileman





Burlington Escorted Tours at a Glance

	PAGE
TOUR A— <i>Glacier and Yellowstone National Parks</i> From Chicago and St. Louis, Saturdays	8
TOUR B— <i>Colorado and Yellowstone National Park</i> From Chicago and St. Louis, Thursdays	12
TOUR C— <i>Yellowstone and Glacier National Parks</i> From Chicago and St. Louis, Mondays	16
TOUR D— <i>Yellowstone National Park and Colorado</i> From Chicago, Sundays; and St. Louis, Saturdays	20
TOUR E— <i>Colorado and Yellowstone National Park</i> From Chicago, Saturdays; and St. Louis, Sundays	25
TOUR F— <i>Colorado-Yellowstone and Glacier National Parks</i> From Chicago, Saturdays; and St. Louis, Sundays	30
TOUR G— <i>Colorado-Yellowstone and Glacier National Parks</i> From Chicago and St. Louis, Thursdays	34
TOUR H— <i>Yellowstone National Park</i> From Chicago, Sundays; and St. Louis, Saturdays	35
TOUR J— <i>Glacier National Park</i> From Chicago and St. Louis, Saturdays	36
TOUR K— <i>Black Hills and Glacier National Park</i> From Chicago and St. Louis, Thursdays	37
TOUR L— <i>Black Hills and Yellowstone National Park</i> From Chicago and St. Louis, Thursdays	40
TOUR M— <i>Black Hills, Yellowstone National Park and Colorado</i> From Chicago and St. Louis, Thursdays	42
TOUR P— <i>Colorado-California-Grand Canyon</i> From Chicago and St. Louis, Sundays	43
TOURS S ₂ -S ₄ — <i>Seward, Alaska</i> From Chicago, July 7-Aug. 4; St. Louis, July 6-Aug. 3	44
TOURS S ₁ -S ₃ — <i>Skagway, Alaska</i> From Chicago, July 3 and 24; St. Louis July 2 and 23	45



Glacier and Yellowstone—Tour "A"

Complete Schedule and Itinerary

SATURDAY—Leave Chicago from the new Union Station at 11:00 p.m., or leave St. Louis 2:15 p.m., via Burlington Route.

SUNDAY—The St. Louis party arrives St. Paul at 8:35 a.m., and joins the Chicago party upon arrival at 10:55 a.m. Luncheon and dinner at the St. Paul Hotel with the afternoon devoted to sight-seeing trip around St. Paul and Minneapolis. Leave St. Paul 11:00 p.m., via Great Northern.

MONDAY—En route westward through the vast wheat belt of Minnesota and North Dakota and the Milk River Valley of northern Montana.

TUESDAY—Arrive Glacier Park, 8:05 a.m. Two different tours—the *Regular* and the *Canadian*, are offered through Glacier Park. Everybody spends the morning visiting the Blackfeet Indian Camp and after luncheon at the Glacier Park Hotel the party divides and continues as follows:

REGULAR TOUR

Motor through Two-Medicine Valley with boat trip on Two-Medicine Lake and a hike to Twin Falls, returning to Glacier Park Hotel for over-night.

WEDNESDAY—Morning auto trip to Many-Glacier Hotel where we spend a full day amid mountain grandeur indescribable.

THURSDAY—Morning hike to Mt. Altn for an inspiring view of the mountain world. Those desiring a horseback trip can ride to Iceberg

Lake at an extra charge of \$5.00. Leave Many-Glacier at 4:00 p. m. reaching St. Mary Chalets on the shore of St. Mary Lake at 5:15 p. m. for overnight.

FRIDAY—Leave at 8:00 a. m. for a launch trip on St. Mary Lake up to the charming Going-to-the-Sun Chalets where we have luncheon followed by a trail hike, leaving at 2:00 p. m. for Glacier Park Hotel.



CANADIAN TOUR

Leave at 1:30 p. m. for a 55 mile auto trip to Many-Glacier Hotel in the heart of the Alpine World. Over night here.

WEDNESDAY—Morning hike up Mt. Altyn. Leave at 1:15 p.m. across the Canadian boundary, through Cardston and the Blood Indian Reservation to Waterton Lakes National Park, reaching

the Prince of Wales Hotel at 5:30 p. m. where we spend the night on foreign soil.

THURSDAY—Leave at 1:00 p. m., again across the International boundary and through Glacier Park by motor and boat to the famous Going-to-the-Sun Chalets for overnight.

FRIDAY—A delightful morning here before departing at 2:00 p. m. for Glacier Park Hotel.

Both parties reach Glacier Park Hotel for dinner and the evening, leaving at 11:59 p. m. Friday via Great Northern for Helena and Yellowstone

SATURDAY—Through the Montana Rockies, Prickly Pear and Missouri River Canyons, arriving Helena—Capital of Montana—at 11.20 a.m. Sidetrip by auto and launch to the Gate-of-the-Mountains on the Missouri River with a picnic dinner at a historic place where the Lewis and Clark expedition made camp more than a century ago. Leave Helena, 10.00 p.m., via Northern Pacific.

SUNDAY—
 MONDAY
 TUESDAY
 WEDNESDAY

—Arrive Gardiner, Montana at 9.30 a.m. and go at once to Mammoth Hot Springs, the first stop in Yellowstone. During the balance of this day and succeeding days up to Thursday, we are engaged in the pleasant pastime of seeing the famous sights of magic Yellowstone—a complete five-day tour through the great wonderland, whose strange sights cannot be duplicated any place in the known world.

THURSDAY—Over the famous 90-mile Cody Road, through the Buffalo Bill country—via Sylvan Pass, Lake Eleanor, Shoshone National Forest, the dude ranch region, with a stop at Shoshone Dam, and as a fitting climax to a wonderful tour, the six-mile gorge of the Shoshone River. Luncheon en route at Sylvan Pass Lodge and dinner at the Burlington Inn at Cody. Leave Cody 8.30 p.m., via Burlington Route.

FRIDAY—En route on the Northern Pacific, through the old Indian country of eastern Montana, the Bad Lands, and the great stock and grain sections of North Dakota.

SATURDAY—Arrive Minneapolis 6.45 a.m., St. Paul 7.15 a.m. Daylight ride along the Wisconsin shore of Lake Pepin and the Mississippi River. Arrive Chicago 7.55 p.m. Passengers for St. Louis leave Chicago 9.00 p.m., arriving St. Louis 7.00 a.m. Sunday.

Through Glacier and Yellowstone--(Hotels) Pullman, Meals, Lodging, Motor Trips--All Necessary Expenses

COST OF COMPLETE TOUR	FROM CHICAGO		FROM ST. LOUIS	
	Without Railroad Ticket	With Railroad Ticket	Without Railroad Ticket	With Railroad Ticket
REGULAR TOUR				
1 person to a lower berth	\$176.55	\$242.20	\$182.93	\$251.23
2 persons to a lower berth (each)	156.55	222.20	160.74	229.04
1 person to an upper berth	168.55	234.20	174.05	242.35
CANADIAN TOUR				
1 person to a lower berth	\$188.30	\$253.95	\$194.68	\$262.98
2 persons to a lower berth (each)	168.30	233.95	172.49	240.79
1 person to an upper berth	180.30	245.95	185.80	254.10

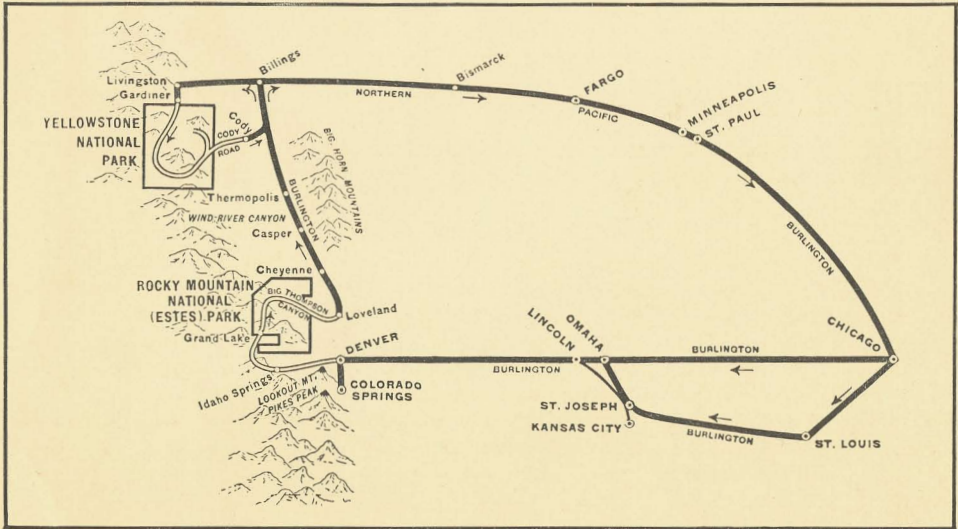
Via Lodges through Yellowstone, \$9.00 less.



*Nature's Timepiece—Old Faithful Geyser
Yellowstone National Park*
© Haynes



*Going-to-the-Sun Chalets on St. Mary Lake
Glacier National Park
© Hileman*



Colorado and Yellowstone—Tour "B"

Complete Schedule and Itinerary

THURSDAY—Leave Chicago from the new Union Station at 11.30 p.m., St. Louis 9.01 p.m., via Burlington Route.

FRIDAY—Chicago party is en route through Iowa, crossing the Missouri River at Omaha. St. Louis party arrives Omaha 11.50 a.m. Luncheon Fontanelle Hotel with afternoon auto ride, joining the Chicago party, leaving Omaha 4.25 p.m.

SATURDAY—Arrive Denver 7.15 a.m. Motor to Albany Hotel for breakfast and luncheon. Afternoon auto tour around Denver returning to Albany Hotel for dinner. Leave Denver 11.30 p.m., via Colorado & Southern Ry.

SUNDAY—Arrive Colorado Springs early in the morning, remaining in special sleeping cars until 7.00 a.m. Breakfast at the Cliff House, Manitou. Morning trip to summit of Pikes Peak and return. Luncheon at the Cliff House, and afternoon motor trip embracing the Garden of the Gods, Seven Falls, South Cheyenne Canyon and to the top of Cheyenne Mountain. Dinner at the Antlers Hotel, Colorado Springs.

MONDAY—Leave Colorado Springs 4.20 a.m., via C. & S. Ry. (sleepers open for occupancy 10.00 p.m. Sunday). Arrive Denver 7.00 a.m. Motor via Golden and Lariat Trail to summit of Lookout Mountain. Brief stop at the grave of Col. Wm. F. Cody (Buffalo Bill) thence via Denver's Mountain Parks, and through Clear Creek Canyon to Idaho Hot Springs for luncheon, after which the motor ride is resumed over the Continental Divide at Berthoud Pass, past the mouth of the great Moffat tunnel and so to Grand Lake Lodge for dinner and overnight.

TUESDAY—Motor over the Continental Divide at Milner Pass and over the Fall River Road to Estes Park Chalets for luncheon and the afternoon. Then motor via



Estes Park and through the sixteen mile canyon of the Big Thompson River to Loveland. Leave at 8.13 p.m., via Colo. & Southern Ry.

WEDNESDAY—En route via the Casper oil fields, Thermopolis and Wind River Canyon — the Big Horn Range to the east — the Rockies to the west.

THURSDAY—Arrive Gardiner 9.30 a.m. and transfer to motors for Mammoth Hot Springs, arriving there 10.00 a.m. Afternoon walking tour over the great Hot Springs Terrace formations.

FRIDAY—En route via the Golden Gate, Swan Lake, Apollinaris Spring, Obsidian Cliff, Roaring Mountain, Norris Geyser Basin, Gibbon Canyon and Falls, Mammoth Paint Pots and Lower Geyser Basin to Old Faithful. Twenty-four hours amid the greatest aggregation of geysers in all the world. There are literally scores of them — large and small—of every shape and description — some quiescent, others shooting columns of boiling water and steam high in the air. Some erupt incessantly, others play anywhere from a few minutes to a few hours. Old Faithful Geyser hurls a tremendous volume of water 150 feet into the air every sixty-five minutes. Plans allow ample time for both afternoon and morning tours over the entire Geyser Basin, plus an evening with the bears.

SATURDAY—Via Kepler Cascades, twice across the Continental Divide to Yellowstone Lake, with a brief stop to see the famous Fishing Cone, thence along the wooded shore of this second highest body of water in the world. A pleasant evening at this beautiful place on the shore of Yellowstone Lake. A good place to go fishing.

SUNDAY—Along the Yellowstone River, through beautiful Hayden Valley, stopping at the Mud Volcano; hotel party crosses the river at the Upper Falls and lodge party goes via Inspiration Point for a first inspiring view of the wonderful painted canyon of the Yellowstone and the majestic Lower Fall. Side trip to Dunraven Pass, arriving Grand Canyon 12.00 noon.

MONDAY—Along the Yellowstone River and over the Cody Road — famous ninety-mile scenic motor highway through the Buffalo Bill country. En route Sylvan Pass, Lake Eleanor, Shoshone National Forest, Wyoming “dude” ranch region, with a stop at the Shoshone Irrigation Dam, and as a grand climax — the wonderful six-mile Shoshone Canyon. Luncheon en route at Sylvan Pass Lodge and dinner at the Burlington Route Inn at Cody. Leave Cody 8.30 p.m., via Burlington Route.

TUESDAY—En route on the Northern Pacific, through the Indian country of eastern Montana, the Bad Lands, and vast stock and grain ranches of North Dakota.

WEDNESDAY—Arrive Minneapolis 6.45 a.m., St. Paul 7.15 a.m. Daylight ride along the Wisconsin shore of Lake Pepin and the Mississippi River. Arrive Chicago 7.55 p.m. Passengers for St. Louis leave Chicago 9.00 p.m., arriving St. Louis 7.00 a.m. Thursday.

Through Colorado and Yellowstone — Pullman, Meals, Lodging, Motor Trips — All Necessary Expenses

COST OF COMPLETE TOUR		FROM CHICAGO		FROM ST. LOUIS	
		Without Railroad Ticket	With Railroad Ticket	Without Railroad Ticket	With Railroad Ticket
1 person to a lower berth	Hotels	\$173.76	\$233.11	\$178.01	\$239.96
2 persons to a lower berth (each) .	Thru	154.01	213.36	156.76	218.71
1 person to an upper berth	Yellowstone	165.85	225.20	169.50	231.45
1 person to a lower berth	Lodges	\$164.76	\$224.11	\$169.01	\$230.96
2 persons to a lower berth (each) .	Thru	145.01	204.36	147.76	209.71
1 person to an upper berth	Yellowstone	156.85	216.20	160.50	222.45



*Shoshone Canyon on
the Cody Road from Yellowstone*



From Yellowstone Over the Cody Road

THE Cody Road is the famous scenic motor highway which starts at Yellowstone Lake and ends at Cody, Wyo.,— a 90-mile wonder way of scenic splendor with a thrill around every curve — and curves there are, a-plenty. Leaving the lake shore the road plunges at once into a great forest of jack pine relieved here by a lovely lake, there by a clearing through which the Grand Tetons may be glimpsed — 60 miles away.

Presently the motors start climbing up the west slope of the Absaroka Mountains. Up and up. Timber line reached and passed. The top is crossed through Sylvan Pass where the snow lies heavy in mid-July and hardly ever disappears before the first snows of next Winter. Then down the great 7 mile hill; the road twisting and turning crosses over itself at the Corkscrew Bridge, runs through another forest and comes finally to the Shoshone River where a welcome lunch waits at Sylvan Pass Lodge.

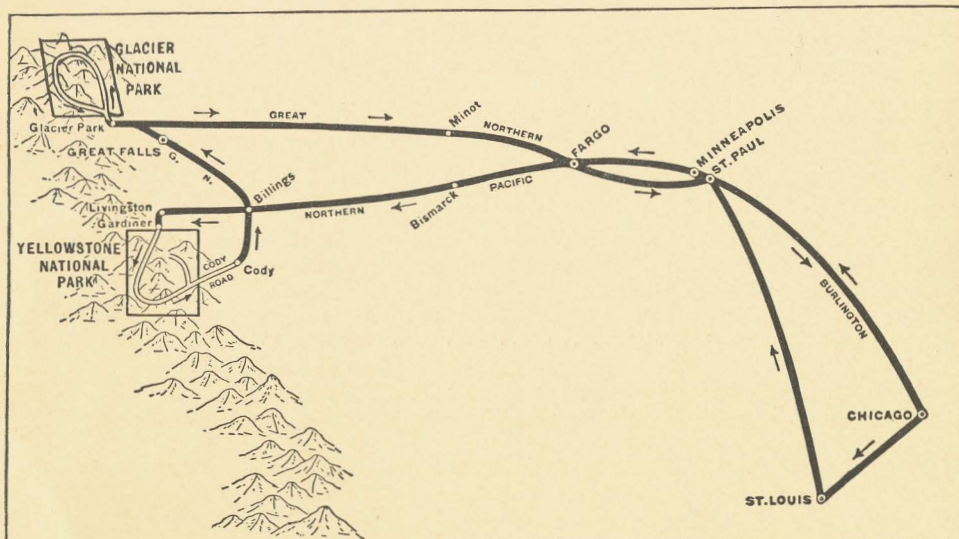
Luncheon over, the trip is resumed — out of Yellowstone and into the Shoshone National Forest for 40 miles through the Buffalo Bill country and later enters a broad valley flanked by towering bare cliffs in which the hand of erosion has carved a million fantastic configurations.

Just ahead, Rattlesnake and Cedar Mountains appear surely to block further progress, and the question of how the road finds a way through the mountain walls is a source of wild conjecture as the motors enter a heroic canyon through twin tunnels hewn out of solid granite. Between almost perpendicular walls, the highway winds a tortuous and thrilling way up to the big government irrigation dam where a stop is made while one catches his breath and inspects this gigantic concrete obstacle behind which the water is piled up to within a few feet of the crest — and loses his breath again upon looking down the other side to the tiny ribbon of water, more than 300 feet below.

Then on — more tunnels, more thrills, for almost five miles through the tremendous canyon whose walls are a thousand feet high, now close down beside the roaring river, now hundreds of feet up above the stream on a shelf hewn out of solid granite.

Emerging from the canyon, the road crosses the historic plateau where the warring Crows and Blackfeet fought it out, past the great bronze Buffalo Bill statue and comes at last to Cody, Wyoming — end of the Cody Road where Pullmans wait in readiness to resume the rail journey.

The Cody Road completes one hundred percent of the possibilities of any Yellowstone trip and comes as a fitting climax to all *Burlington Escorted Tours* through "Wonderland."



Yellowstone and Glacier—Tour "C"

Complete Schedule and Itinerary

MONDAY—Leave Chicago 11.00 p.m., St. Louis 2.15 p.m., via Burlington Route.

TUESDAY—St. Louis party reaches Minneapolis 9.20 a.m. and combines with the Chicago party at 11.55 a.m. Luncheon and dinner at Nicollet Hotel; afternoon motor trip embracing the regions of chief scenic attraction in Minneapolis and St. Paul and their environs. Leave Minneapolis 11.35 p.m., via Northern Pacific (sleepers ready 10.00 p.m.).

WEDNESDAY—En route through the Bad Lands of North Dakota and the old Indian country of Eastern Montana.

THURSDAY—Through Paradise Valley and Yankee Jim Canyon, reaching Gardiner 9.30 a.m., where we transfer to motors which carry us to Mammoth Hot Springs. Afternoon walking tour over the interesting Hot Springs Terraces. Dinner and overnight here.

FRIDAY—Leave at 8.15 a.m., by motor via the Hoodoos, Golden Gate, Swan Lake with a stopover for a trip through the Norris Geyser Basin, continuing through Gibbon Canyon and alongside the Firehole River stopping at the Excelsior Geyser Basin and on to Old Faithful for a 24-hour visit among the world's foremost aggregation of geysers, colored pools, boiling springs and other strange and unheard-of hot water phenomena.

SATURDAY—Leave Old Faithful at 1.50 p.m. for an interesting motor ride—twice across the Continental Divide and along the shore drive to Yellowstone Lake with a stopover en route to visit the famous multi-colored paint pots at "The Thumb". An interesting evening at the Lake visiting the bears, dancing and other diversions.

SUNDAY—Leave the Lake at 10.00 a.m. motoring along the Yellowstone River through Hayden Valley with stops at the Mud Volcano, the Dragon's Mouth and so to Artist Point, (hotel party) and Inspiration Point (lodge party) for a first view of the magnificent



Grand Canyon of the Yellowstone and the tremendous Great Fall, followed by a side trip by motor to Dunraven Pass and back to the Grand Canyon for luncheon with an afternoon open in which to become acquainted with the wonders of the Grand Canyon.

MONDAY—Leave the Grand Canyon at 9.00 a.m. for the thrilling motor trip over the 90-mile scenic Cody Road via Yellowstone Lake, Sylvan Pass, Shoshone Forest, the big Government Irrigation Dam and the six mile Shoshone Canyon, reaching Cody for dinner. Leave Cody via Burlington Route at 8.30 p.m. headed for Glacier Park.

TUESDAY—Arrive Great Falls, Montana at 1.30 p.m. where a stopover is made for a sight-seeing trip by motor to the Giant Springs and the Rainbow Fall of the Missouri River. Dinner and dancing at the Park Hotel.

WEDNESDAY—Arrive Glacier Park 8.05 a.m. This day divided between visiting the Blackfeet Indian camps and a motor trip to the Two-Medicine Valley with a boat ride on the lake and an hour's walking trip to Twin Falls returning to the Glacier Park Hotel for dinner and overnight. Entertainment by the Indians in the evening.

THURSDAY—Fifty-five mile motor trip to Many-Glacier Hotel with an afternoon in which to admire the wonderful mountain scenery and take a boat ride on McDermott Lake and across Josephine Lake for a view of Grinnell Glacier.

FRIDAY—Morning hike up the Mt. Altyn trail for a view of the mountain world. Those preferring to do so may have a horseback ride to Iceberg Lake at a slight extra cost. Leave Many-Glacier by motor in the afternoon for St. Mary Chalets thence by boat on St. Mary Lake to Going-to-the-Sun Chalets.

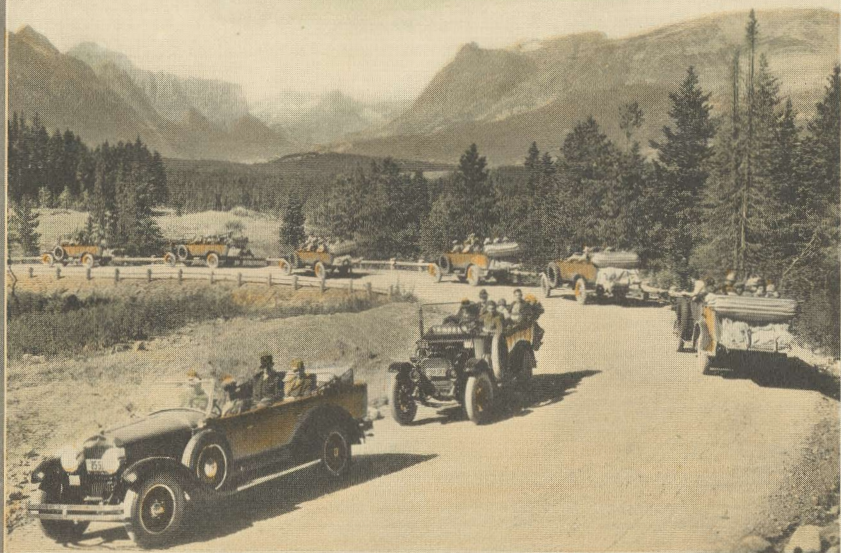
SATURDAY—A morning trail hike to Baring Falls and Sun Rift Gorge during which some of the most spectacular mountain scenery in America is viewed to advantage. Back to St. Mary by launch in the afternoon and thence by motor to the Glacier Park Hotel for dinner, leaving the Park at 9.40 p.m. on the Great Northern Ry.

SUNDAY—En route eastward across Montana and North Dakota.

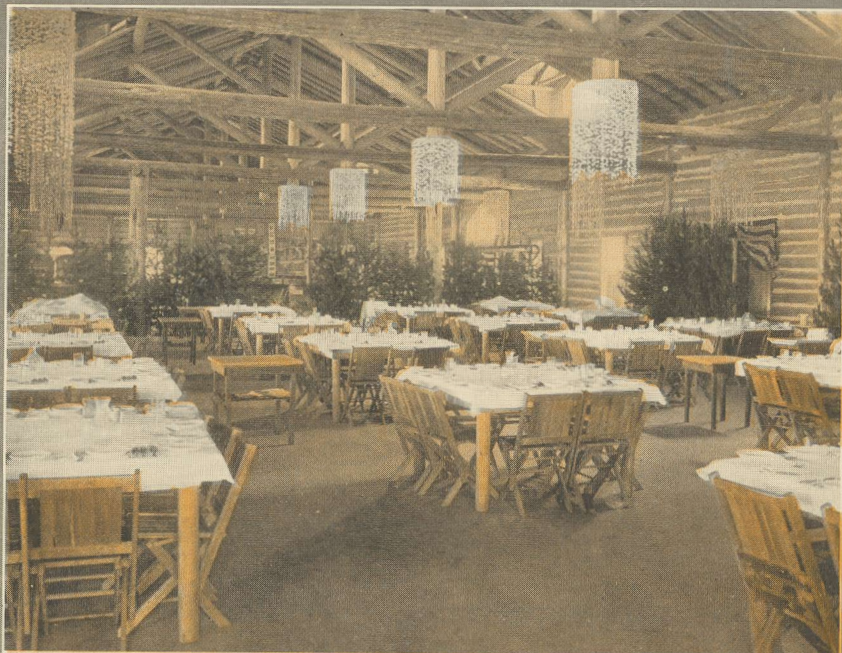
MONDAY—Reach Minneapolis at 7.00 a.m., St. Paul 7.55 a.m. with a pleasant day ahead for the 300-mile daylight trip along the scenic Wisconsin shore of the upper Mississippi River, reaching Chicago 7.55 p.m. The St. Louis party will leave Chicago at 9.00 p.m. reaching St. Louis 7.00 a.m. Tuesday.

Through Yellowstone and Glacier — Pullman, Meals, Lodging, Motor Trips —
All Necessary Expenses

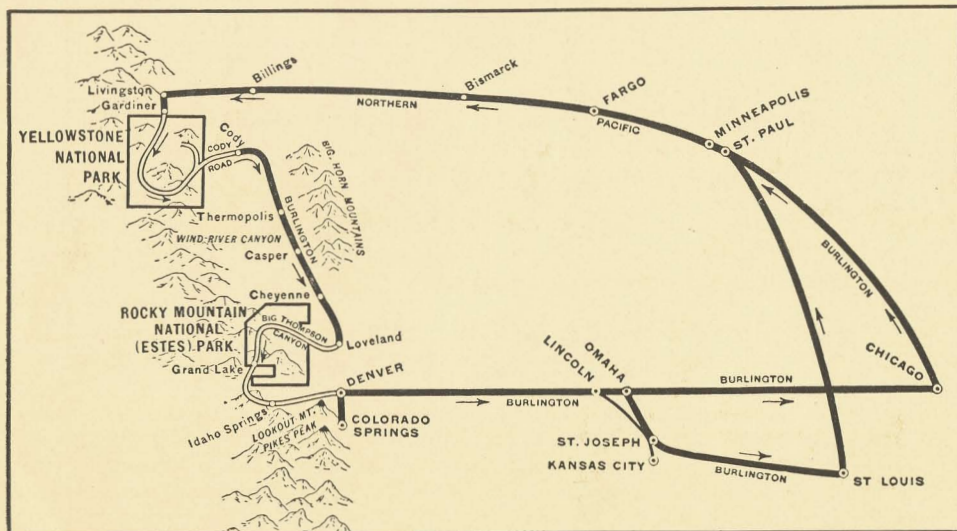
COST OF COMPLETE TOUR	FROM CHICAGO		FROM ST. LOUIS	
	Without Railroad Ticket	With Railroad Ticket	Without Railroad Ticket	With Railroad Ticket
1 person to a lower berth.....	\$174.18	\$239.83	\$177.93	\$246.23
2 persons to a lower berth (each).....	153.99	219.64	156.87	225.17
1 person to an upper berth.....	166.10	231.75	169.50	237.80
1 person to a lower berth.....	\$165.18	\$230.83	\$168.93	\$237.23
2 persons to a lower berth (each).....	144.99	210.64	147.87	216.17
1 person to an upper berth.....	157.10	222.75	160.50	228.80



*Tour parties in Glacier Park on the road
to St. Mary Lake and leaving the
Glacier Park Hotel*



Lodge Dining Room
Yellowstone National Park
© Haynes
"Hold-Up" Bear in Yellowstone



Yellowstone and Colorado—Tour "D"

Complete Schedule and Itinerary

SUNDAY—Leave Chicago 10.35 a.m. from the new Union Station, via Burlington Route, skirting the east shore of the Mississippi River for over three hundred miles during the afternoon. Leave St. Paul 11.00 p.m.

SATURDAY—Leave St. Louis 2.15 p.m., via Burlington Route.

SUNDAY—St. Louis party arrives St. Paul 8.35 a.m. remaining until evening. Luncheon and dinner St. Paul Hotel with auto trip to interesting points around the Twin Cities, joining Chicago party here and leaving St. Paul as one party.

MONDAY—En route through the wheat fields of Minnesota and North Dakota.

TUESDAY—Arrive Gardiner, the entrance to wonderland at 9.30 a.m., via Northern Pacific. Luncheon Mammoth Hot Springs. Afternoon hiking trip over Hot Springs Terraces.

WEDNESDAY—Through three famous geyser basins to Old Faithful where we spend twenty-four hours. Afternoon hiking trip among the greatest aggregation of geysers in the world — boiling springs, seething cauldrons, steaming pools, scores of geysers — a thousand phases of hot water phenomena, surprising, unheard-of.

THURSDAY—Leave Old Faithful at 1.50 p.m., twice over the Continental Divide and along the shore of Yellowstone Lake to the Lake Hotel or Lodges.

FRIDAY—Along the Yellowstone River through Hayden Valley with side trip to Dunraven Pass. Hotel party goes via Artists Point, lodge party via Inspiration Point for a first view of the Grand Canyon and majestic Great Fall, arriving Grand Canyon



12.00 noon. Plenty of time in the afternoon to view the amazing Falls from various vantage points and to explore the wonderful Painted Canyon.

SATURDAY—Leave Grand Canyon at 9.00 a.m. over the Cody Road — the famous ninety-mile scenic motor highway through the Buffalo Bill country, over Sylvan Pass and via the great Shoshone Irrigation Dam and through the breathtaking Shoshone Canyon. Arrive Cody 4.55 p.m. Overnight in Cody.

SUNDAY—Leave Cody 8.20 a.m. over the Burlington's Intermountain route through the Wind River Canyon, Thermopolis Hot Springs, and Casper oil fields — Big Horn Mountains to the East, Rockies to the West.

MONDAY—Arrive Loveland 6.42 a.m. Motor via the wonderful Big Thompson Canyon to Estes Park Chalets for an afternoon of rest at this delightful mountain resort.

TUESDAY—Leave Estes Park Chalets 8.30 a.m. for scenic motor trip through Horseshoe Park and over the snow at Fall River and Milner passes and alongside the headwaters of the Colorado River — a most wonderful trip. Afternoon and night at Grand Lake which is the largest body of water in Colorado and the highest anchorage in the world.

WEDNESDAY—Leave Grand Lake 7.45 a.m. for another day of thrills — over the Continental Divide at Berthoud Pass, then through Clear Creek Canyon, Idaho Springs, Denver's Mountain Parks, and Lookout Mountain, reaching Denver 4.00 p.m. Sight-seeing trip around residence section and city parks. Dinner at the Albany Hotel. Leave 11.30 p.m. for Colorado Springs.

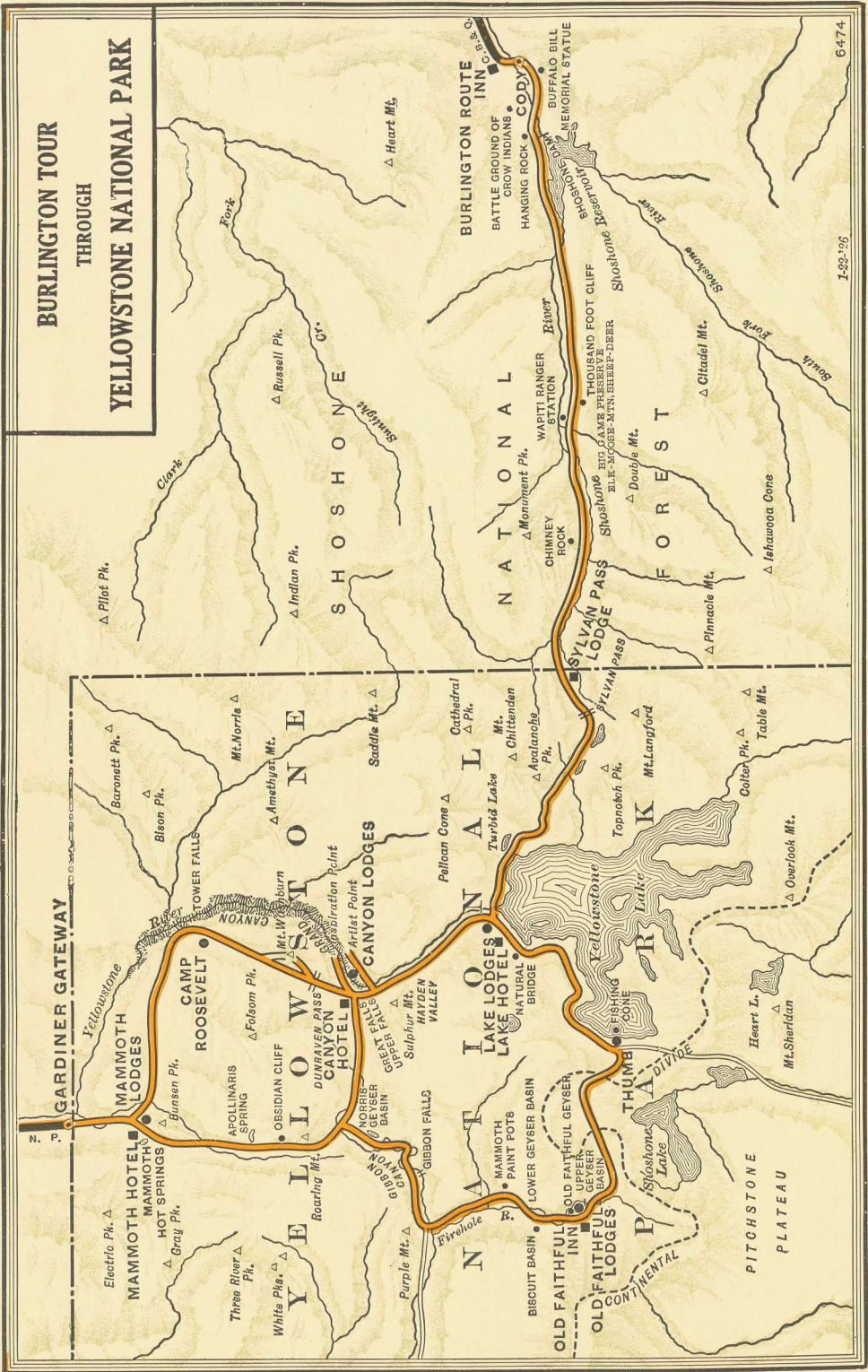
THURSDAY—Arrive Colorado Springs 7.00 a.m. Breakfast and luncheon at Cliff House in Manitou. Morning trip to the summit of Pikes Peak. Afternoon motor trip to the Garden of the Gods, South Cheyenne Canyon and to the top of Cheyenne Mountain. Dinner at the Antlers Hotel. Leave Colorado Springs 7.10 p.m., via Colorado and Southern Ry.

FRIDAY—En route through the grazing and farming country of western Nebraska, arriving Omaha 3.30 p.m. where St. Louis party leaves tour.

SATURDAY — Arrive Chicago 7.00 a.m., via Burlington Route. Arrive St. Louis 7.25 a.m., via Burlington Route.

Through Yellowstone and Colorado—Pullman, Meals, Lodging, Motor Trips—All Necessary Expenses					
COST OF COMPLETE TOUR		FROM CHICAGO		FROM ST. LOUIS	
		Without Railroad Ticket	With Railroad Ticket	Without Railroad Ticket	With Railroad Ticket
1 person to a lower berth.	Hotels Thru Yellowstone	\$172.16	\$231.51	\$175.96	\$237.91
2 persons to a lower berth (each).		154.03	213.38	158.58	220.53
1 person to an upper berth.		164.90	224.25	169.00	230.95
1 person to a lower berth.	Lodges Thru Yellowstone	\$163.16	\$222.51	\$166.96	\$228.91
2 persons to a lower berth (each).		145.03	204.38	149.58	211.53
1 person to an upper berth.		155.90	215.25	160.00	221.95

BURLINGTON TOUR THROUGH YELLOWSTONE NATIONAL PARK



6474
1-22-'06



Yellowstone National Park

WHO needs to be told about Yellowstone? Who is there in this or any other civilized land to whom the very name does not conjure up a picture of a magic land where the steam pressure of underground water heated to a super-boiling point has rent the earth's surface to send skyward great hissing columns of boiling water shot with live steam?

These are the geysers of Yellowstone — the earth's safety valves. They are of all sorts of shapes and descriptions. Some erupt constantly; others are quiescent for periods ranging from a few minutes to several days or longer. One — the famous "Old Faithful" — hurls water and steam straight upward 150 feet every sixty-five minutes, day in and day out, winter and summer. Another — the Riverside — shoots across a river. Still another — the Grotto — has built a grotesque cavernous cone from the mineral deposit left by its own water. Some appear to be connected by underground passages with pools and small lakes, since during the action of the geysers, the lakes are drained to gradually fill up while the geyser gathers new energy for another eruption.

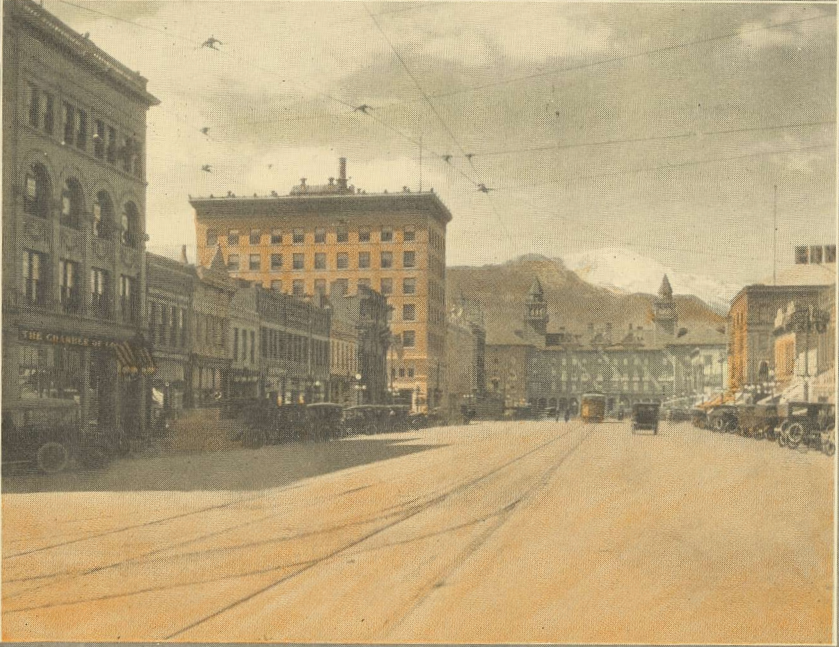
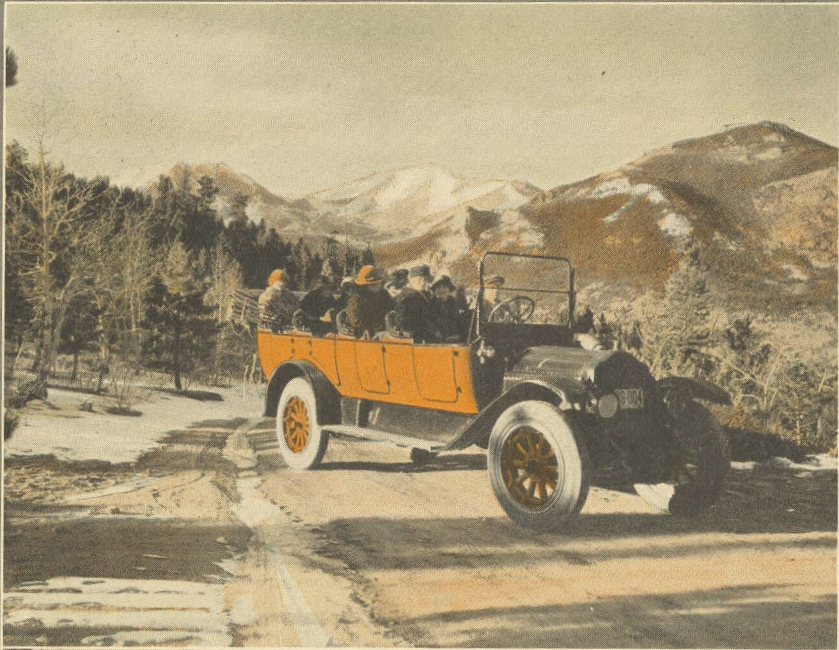
In some cases the superheated steam comes out through great beds of mud, forming the mammoth "paint pots" and mud volcanoes.

Side by side you will find pools of clearest water — one hot, the other ice cold — sometimes one blue, the other green. The sunshot steam rising from Amethyst Pool appears to be tinted in lovely shades of pink, blue and green, due to the marvelously colored rock basin which underlies the clear water.

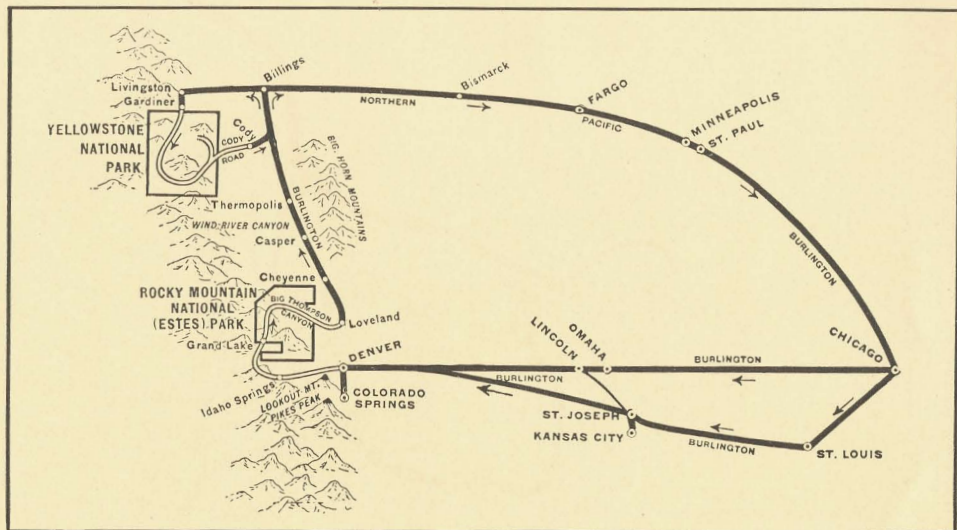
Nor has Yellowstone National Park only these strange sights to sustain its reputation as a wonderland. The turbulent rivers which race through this queer land form a most remarkable series of cataracts and waterfalls which have their climax in "The Great Fall of the Yellowstone." Here the Yellowstone River, with scant time to calm down after negotiating the Upper Fall, plunges over a heroic precipice to fall with a mighty crash hundreds of feet below and go roaring down the terrifying gorge of which the Great Fall forms the head.

Beyond doubt, the most magnificent single scenic feature of Yellowstone is the Grand Canyon of which no truly adequate description has ever been written. Kipling tried to say it as other great writers have tried to put together the words which might portray fittingly the glory of the great painted gorge.

Yellowstone is like that — you can't make it relative. There is no standard of comparison.



*Above—Rocky Mountain National Park
Below—Pikes Peak from Colorado Springs*



Colorado—Yellowstone—Tour "E"

Schedule and Itinerary

A combination tour, leaving Chicago at 11.30 p.m. on Saturday and St. Louis at 2.15 p.m. on Sunday and following the day-by-day schedule of Tour "F" exactly as outlined on pages 30 and 31, including Denver, the Colorado Springs — Pikes Peak — Manitou Region; the 200-mile grand circle tour of Rocky Mountain National (Estes) Park; the complete Yellowstone National Park Tour, entering at Gardiner, Montana, and departing over the 90-mile scenic Cody Road through the Buffalo Bill country to Cody, Wyoming.

From Cody the schedule is the same as that of Tour "A" exactly as outlined on page 9, reaching Chicago, Saturday night at 7.55 p.m. and St. Louis, Sunday at 7.00 a.m.

Through Colorado and Yellowstone — Pullman, Meals, Lodging, Motor Trips — All Necessary Expenses					
COST OF COMPLETE TOUR		FROM CHICAGO		FROM ST. LOUIS	
		Without Railroad Ticket	With Railroad Ticket	Without Railroad Ticket	With Railroad Ticket
1 person to a lower berth.	Hotels Thru Yellowstone	\$179.26	\$238.61	\$179.76	\$241.71
2 persons to a lower berth (each).		159.51	218.86	158.51	220.46
1 person to an upper berth.		171.35	230.70	171.25	233.20
1 person to a lower berth.	Lodges Thru Yellowstone	\$170.26	\$229.61	\$170.76	\$232.71
2 persons to a lower berth (each).		150.51	209.86	149.51	211.46
1 person to an upper berth.		162.35	221.70	162.25	224.20



**BURLINGTON TOUR
 THROUGH
 GLACIER NATIONAL PARK**

6476

2-8-'23

POOLE BROS. CHICAGO.



Glacier National Park

PEOPLE go back to Glacier Park. The "land of shining mountains" finds them unprepared for the mighty array of rugged beauty created by a prehistoric upheaval which literally piled mountain upon mountain.

Scientists tell us that countless centuries ago a great subterranean disturbance caused the earth's surface to give way here, forming a great jagged crack many miles long. In the readjustment which followed one edge or lip of the great cleft was thrust over and across the other — a phenomenon unique in North America and perhaps in the world — now called by geologists the "Lewis Overthrust Fault."

The glacial age followed, when the whole of North America was covered by an ice sheet which moved slowly southward, grinding out with its irresistible weight huge basins or cirques, and tearing away the softer substrata of rock here exposed. The centuries which followed witnessed the melting of the ice sheets and revealed the mighty peaks which withstood the glaciers' terrific grinding force and now rear their proud heads in Glacier National Park — unconquered and unconquerable — the wildest confusion of mountain grandeur on the continent.

Did we say the ice sheet melted away? Not entirely. Some sixty living glaciers — remnants of the vast ice fields which once covered the whole of the Northwest yet remain in Glacier Park and bid fair to stay, gaining in the winters' snows what they lose during the summer in the way of countless streams of icy water which have their source in these glaciers and go catapulting from ledge to ledge down the mountain sides to turn crystal blue as they run through the pine forest to join other streams and flow on — some to the Pacific Ocean, some to the Gulf of Mexico, others to the Arctic Ocean through Hudson Bay.

Here the call of the mountains is a real call. To this domain where the Blackfeet Indians make their medicine in the shadow of Going-to-the-Sun, just as the Blackfeet have done since time immemorial — to this "land of shining mountains" you will go some day and then go again and again — to ride on a horse; to hike over mountain trails up to the glistening glaciers; to walk through the forest and beside a sparkling stream — up here where the Rockies reach their scenic climax.

Adjoining Glacier National Park on the North — across in Canada — is the new Waterton Lakes National Park. Tours "A" and "F" include a visit to this new mountain playground with an overnight stop at the famous Prince of Wales Hotel.



Old Faithful Inn
Yellowstone National Park
© Haynes



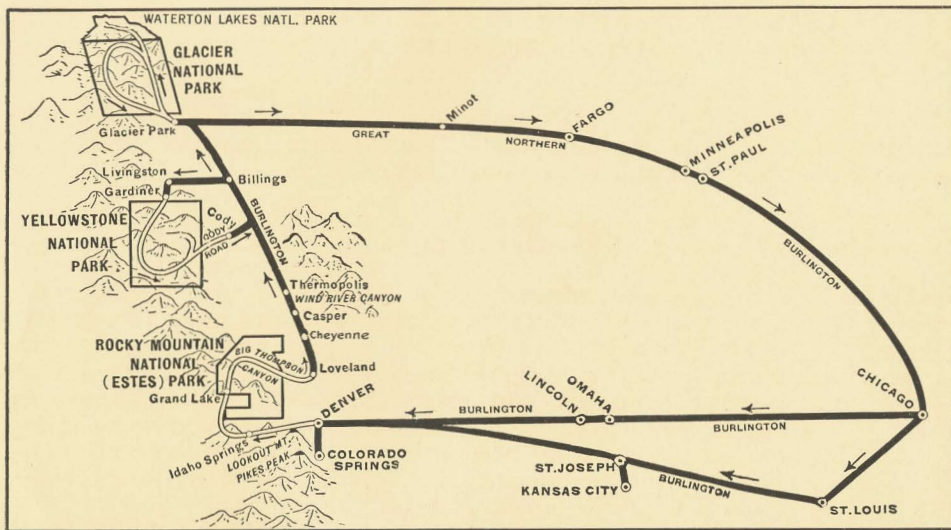
Burlington Escoc
Idaho Hot Spr



*Going-to-the-Sun Mountain and St. Mary
Lake—Glacier National Park*



*Departed Tour Party at
St. Marys, Colo. (1927)*



Colorado—Yellowstone—Glacier—Tour "F"

Schedule and Itinerary

This is a comprehensive three-parks tour of the entire Rocky Mountain vacationland all the way from Pikes Peak in Colorado to the Canadian Boundary and beyond into the new Waterton Lakes National Park in Canada — requiring about three weeks time.

SATURDAY—Leave Chicago 11.30 p.m. from the New Union Station.

SUNDAY—Leave St. Louis 2.15 p.m., via the Burlington Route.

MONDAY—Arrive Denver early in the afternoon and start at once for a sightseeing tour by motor around Denver and into the mountains which start practically at the edge of the city. Dinner tonight at the Shirley-Savoy Hotel and leave late in the evening for Colorado Springs.

TUESDAY—Arrive Colorado Springs early in the morning. Breakfast at the Cliff House in Manitou. In the morning we scale Pikes Peak, returning to the Cliff House for luncheon and spend the afternoon on a delightful motor trip embracing the Garden of the Gods, South Cheyenne Canyon, Seven Falls and to the summit of Cheyenne Mountain. Dinner at Antlers Hotel.

WEDNESDAY—Leave Colorado Springs early in the morning — back to Denver and right after breakfast start on a wonderful motor tour out through Golden, up the famous Lariat Trail to the summit of Lookout Mountain, thence through Denver's Mountain Parks, Clear Creek Canyon, Idaho Springs (luncheon) over the Continental Divide at Berthoud Pass and so to Grand Lake for dinner and overnight.



THURSDAY—The motor trip is resumed after luncheon — again over the Continental Divide at Milner Pass and over the Fall River Road to Estes Park for dinner and overnight.

FRIDAY—A pleasant day with plenty to do in Estes Park, leaving at 5.00 p.m. by motor through the thrilling 16-mile canyon of the Big Thompson River, ending up at Loveland where we board our Pullmans for a trip to magic Yellowstone.

SATURDAY—Through the oil fields in the Casper area, through the Wind River Canyon and Thermopolis Hot Springs, arriving at Billings, Montana for the evening.

SUNDAY—
MONDAY—
TUESDAY—
WEDNESDAY—
THURSDAY—

—Arrive Gardiner, Montana at 9.30 a.m. and go at once to Mammoth Hot Springs, the first stop in Yellowstone. During the balance of this day and succeeding days up to Thursday night, we are engaged in the pleasant pastime of seeing the famous sights of magic Yellowstone — a complete five-day tour through the great wonderland, whose strange sights cannot be duplicated any place in the known world — ending up at Cody, Wyoming, late in the afternoon on Thursday after a never-to-be-forgotten motor trip over the famous 90-mile Cody Road. Leave Cody at 8.30 p.m.— Glacier National Park next stop.

FRIDAY— En route across Montana reaching Glacier National Park at 7.53 p.m. Overnight at the Glacier Park Hotel.

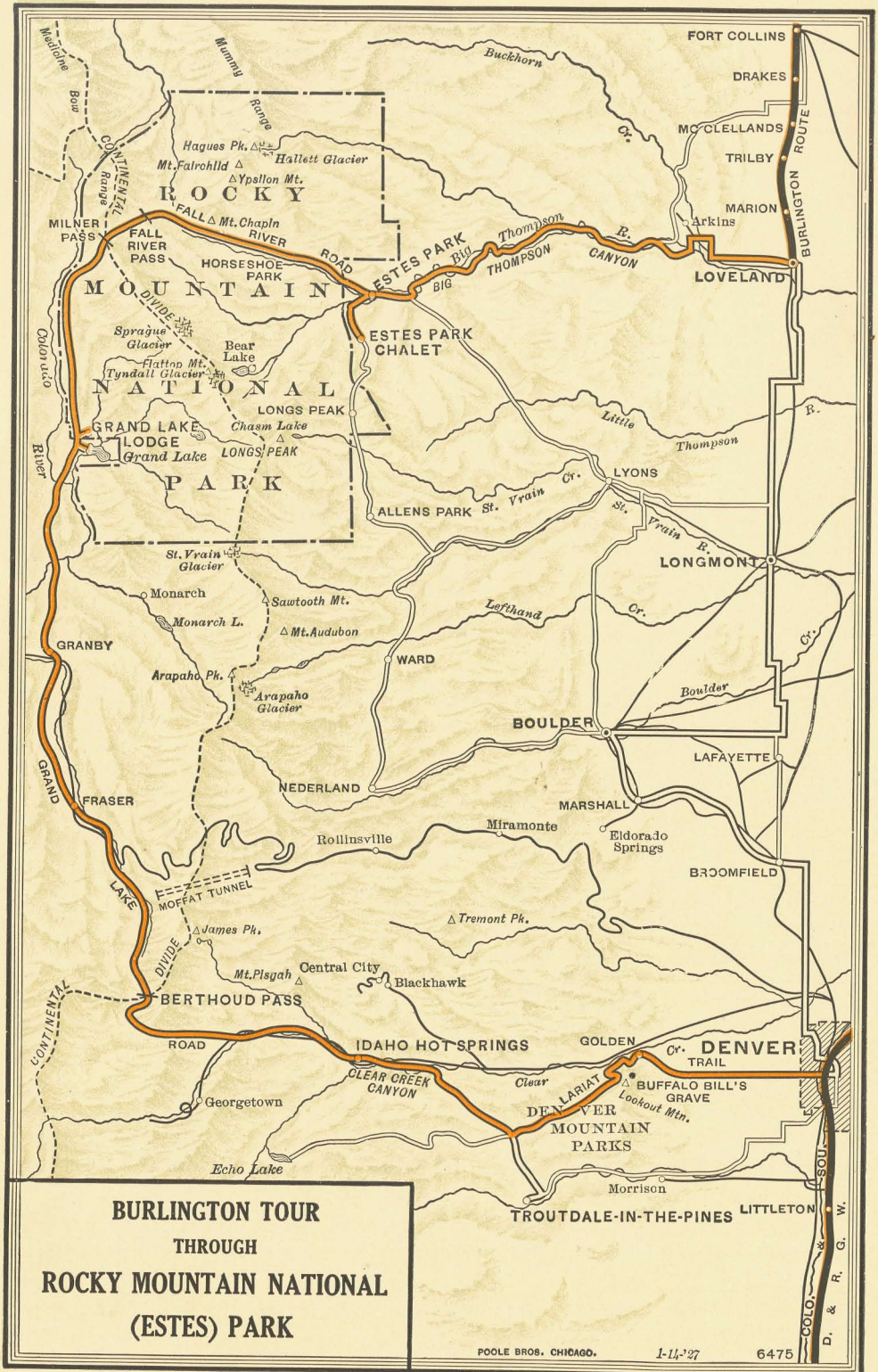
SATURDAY—
SUNDAY—
MONDAY—
TUESDAY—
WEDNESDAY—

—Five glorious days in this Alpine skyland where mountain is literally piled upon mountain. Going-to-the-Sun Chalets, St. Marys Lake, the Many-Glacier Region, and other places of greatest scenic interest, climaxed by a trip across the International Boundary to the new Waterton Lakes National Park in Canada, with an overnight stop at the Prince of Wales Hotel. Return to Glacier Park Hotel Wednesday afternoon, leaving Glacier National Park at 9.40 p.m. via the Great Northern Railway.

THURSDAY—Homeward bound through Montana, North Dakota and Minnesota.

FRIDAY—Arrive Minneapolis 7.00 a.m. and St. Paul 7.30 a.m. with a pleasant day ahead for a 300 mile daylight ride along the beautiful Wisconsin shore of the upper Mississippi River, reaching Chicago at 7.55 p.m. Friday and St. Louis at 7.00 a.m. Saturday.

Through Colorado, Yellowstone and Glacier — Pullman, Meals, Lodging, Motor Trips — All Necessary Expenses				FROM CHICAGO		FROM ST. LOUIS	
COST OF COMPLETE TOUR				Without Railroad Ticket	With Railroad Ticket	Without Railroad Ticket	With Railroad Ticket
1 person to a lower berth.				\$266.01	\$331.66	\$266.51	\$334.81
2 persons to a lower berth (each).	Hotels Thru Yellowstone			242.51	308.16	241.51	309.81
1 person to an upper berth.				256.60	322.25	256.50	324.80
1 person to a lower berth.				\$257.01	\$322.66	\$257.51	\$325.81
2 persons to a lower berth (each).	Lodges Thru Yellowstone			233.51	299.16	232.51	300.81
1 person to an upper berth.				247.60	313.25	247.50	315.80





Grand Circle Tour of Rocky Mountain National Park

(Tours "B," "E" and "F" make the Grand Circle Tour in the reverse manner)

THIS famous 200-mile motor trip starts at Loveland, Colo., and follows the curving, jagged shore line of the Big Thompson River through a mighty Canyon for 16 miles, leading into the lovely little mountain village of Estes Park.

From here the route is over the Fall River Road, up the east slope of the Continental Divide in a series of zig-zag switch-backs to Fall River Pass (elevation 11,800 feet) where magnificent vistas of the valley below and the great snow-fields on Trail Ridge greet the eye. Mountain panoramas of the first order of sublimity, including the beautiful Never-Summer Range, the Medicine Bow Range, majestic cloud-crowned Longs Peak and the grand southward sweep of the Rockies as far south as Pikes Peak — a parade of snow-capped giants fading into the hazy beyond — contribute their beauty and inspiration. Below, in the foreground, lies the wooded watershed of the Cache la Poudre River.

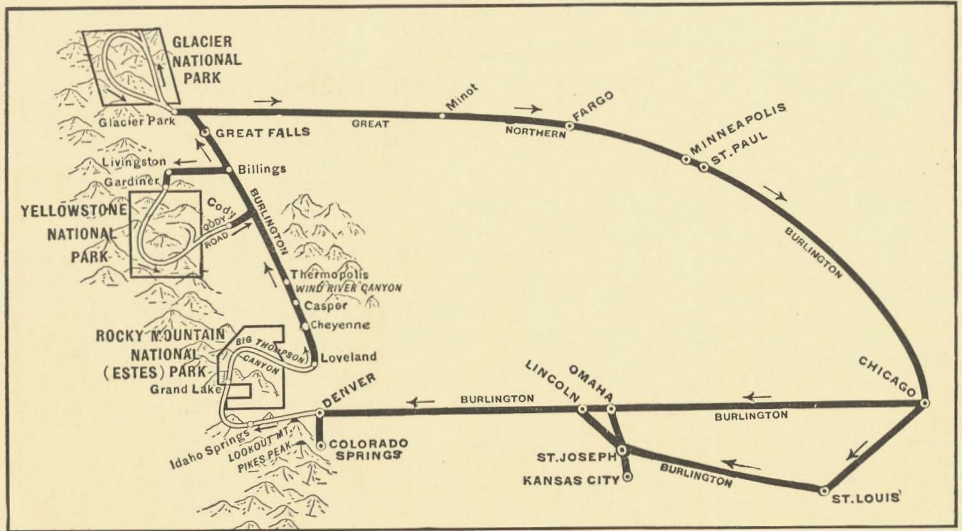
Continuing, this mountain motor highway crosses the mountain-locked region of the Divide at Milner Pass (elevation 10,759 feet), where the Poudre Lakes nestle closely on the Atlantic slope and tiny Lake Irene, mirroring the outlines of the adjacent mountain peaks, occupies an enviable location on the Pacific slope.

From this point, the road makes a rapid, winding descent to the Colorado River, which here flows through a wooded canyon, walled in by towering peaks.

Following the picturesque bends in the river, the road shortly pulls up at Grand Lake where the night is spent.

Continuing on the morrow, the road again crosses the Continental Divide — this time from the Pacific to the Atlantic side, through that colossal crevasses known as Berthoud Pass, then runs through the region made famous by the construction of the great Moffatt Tunnel through James Peak, and continues through a series of kaleidoscopic scenic effects in the canyon of Clear Creek on the way to Idaho Springs, widely known for its hot radium waters.

After luncheon, the cars proceed, bowling along smoothly over the celebrated boulevard which leads eastwardly through Denver's Mountain Parks, and passes through, or within sight of such scenic points as Mount Evans in the Pike National Forest, Genesee Mountain, Lookout Mountain, Park of the Red Rocks and so to Denver by late afternoon.



Colorado—Yellowstone—Glacier—Tour "G"

Schedule and Itinerary

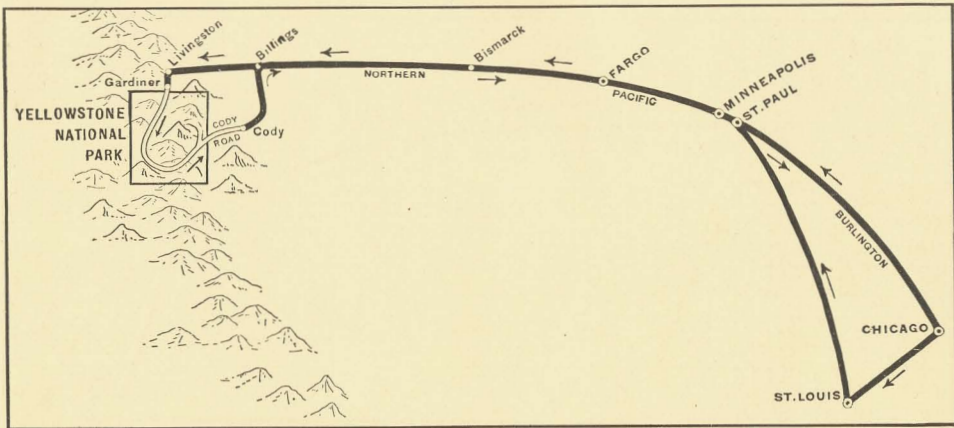
Here is a fine 3-in-1 tour embracing the three great National Parks of the Rocky Mountains.

Leaving Chicago at 11.30 p.m. or St. Louis at 9.01 p.m. on Thursday and following the day by day schedule of Tour "B" exactly as outlined on pages 12 and 13, including Denver, the Colorado Springs — Pikes Peak — Manitou region, the 200 mile grand circle tour of Rocky Mountain National (Estes) Park, the complete 5-day Yellowstone National Park tour entering at Gardiner and departing over the scenic Cody Road, reaching Cody at 4.55 p.m. on the second Monday.

From Cody the schedule is the same as that of Tour "C". Leave Cody at 8.30 p.m. Monday for Glacier National Park, following the Tour "C" program as shown on page 17, to and through Glacier Park, then back through St. Paul and Minneapolis and down the Mississippi arriving Chicago 7.55 p.m. Monday and St. Louis 7.00 a.m. Tuesday.

Through Colorado, Yellowstone and Glacier — Pullman, Meals, Lodging, Motor Trips —
All Necessary Expenses

COST OF COMPLETE TOUR		FROM CHICAGO		FROM ST. LOUIS	
		Without Railroad Ticket	With Railroad Ticket	Without Railroad Ticket	With Railroad Ticket
1 person to a lower berth.	Hotels Thru Yellowstone	\$239.01	\$304.66	\$243.26	\$311.56
2 persons to a lower berth (each).		214.88	280.53	217.63	285.93
1 person to an upper berth.		229.35	295.00	233.00	301.30
1 person to a lower berth.	Lodges Thru Yellowstone	\$230.01	\$295.66	\$234.26	\$302.56
2 persons to a lower berth (each).		205.88	271.53	208.63	276.93
1 person to an upper berth.		220.35	286.00	224.00	292.30



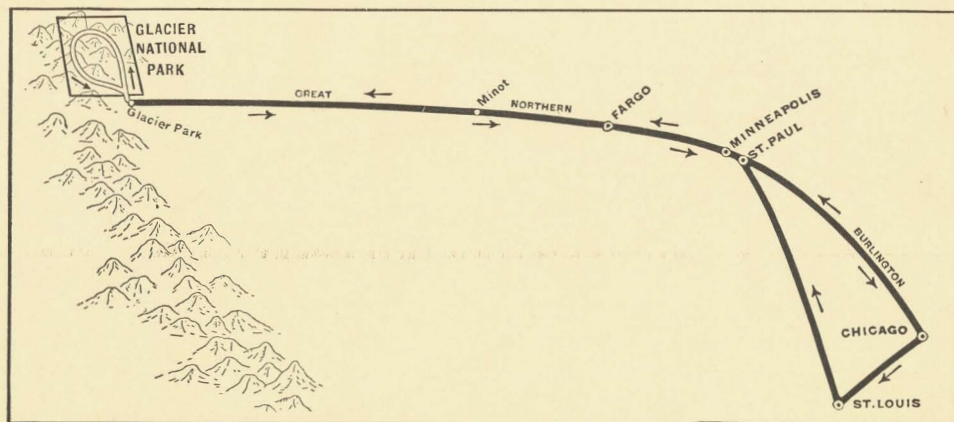
Yellowstone National Park—Tour "H"

Schedule and Itinerary

This is an excellent opportunity for those whose vacation time is short. Through a fortunate combination of portions of two other regularly scheduled tours it is possible and entirely practicable, to have a fine Yellowstone vacation trip, out and back via the short, direct route with the complete 5-day Yellowstone tour but yet requiring only nine days from start to finish.

Leaving Chicago 10.35 a.m. Sunday, or St. Louis 2.15 p.m. Saturday, the going trip follows exactly the program outlined for Tour "D" as shown on pages 20 and 21, including the complete tour through Yellowstone, entering at Gardiner and leaving over the Cody Road via Sylvan Pass, the Shoshone National Forest, Buffalo Bill country and the colossal Shoshone Irrigation Dam. You reach Cody on the next Saturday at 4.55 p.m. and leave Cody at 8.30 p.m. on the same schedule as the "L" tour party as shown on page 41, arriving St. Paul and Minneapolis Monday morning; arriving Chicago Monday evening, and St. Louis Tuesday morning.

Through Yellowstone Park—Pullman, Meals, Lodging, Motor Trips—All Necessary Expenses					
COST OF COMPLETE TOUR		FROM CHICAGO		FROM ST. LOUIS	
		Without Railroad Ticket	With Railroad Ticket	Without Railroad Ticket	With Railroad Ticket
1 person to a lower berth	Hotels Thru Yellowstone	\$106.88	\$166.23	\$115.18	\$177.13
2 persons to a lower berth (each)		91.69	151.04	98.49	160.44
1 person to an upper berth		100.80	160.15	108.50	170.45
1 person to a lower berth	Lodges Thru Yellowstone	\$ 97.88	\$157.23	\$106.18	\$168.13
2 persons to a lower berth (each)		82.69	142.04	89.49	151.44
1 person to an upper berth		91.80	151.15	99.50	161.45



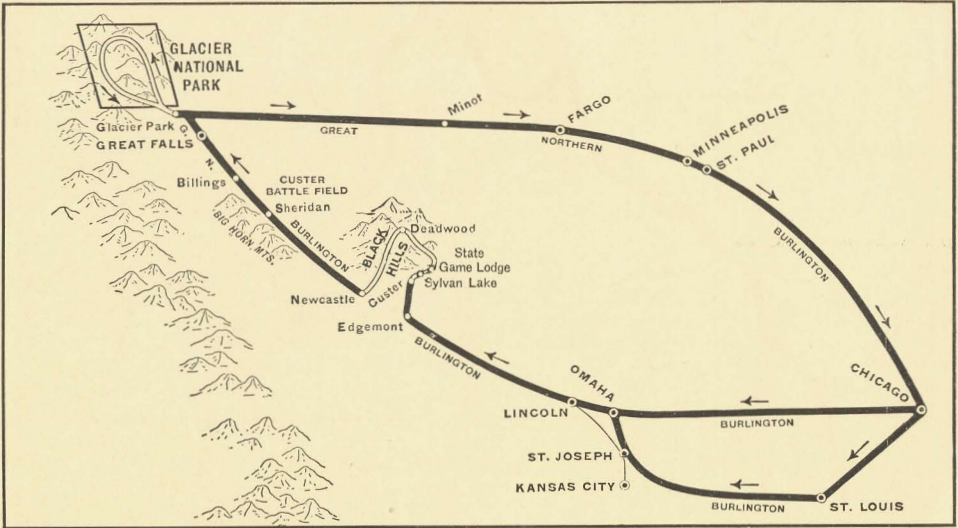
Glacier National Park — Tour "J"

Schedule and Itinerary

This tour has been designed particularly for those who have seen Yellowstone — even those who have been to Glacier but possess the common desire to “go back to Glacier Park” for another visit up here where the Rockies rise out of the plains like pyramids in the wildest confusion of mountain grandeur on the continent.

Leaving Chicago at 11.00 p.m. or St. Louis at 2.15 p.m., Saturday, with a day for sight-seeing in and around St. Paul and Minneapolis and their environs, thence to Glacier National Park for a wonderful five-day tour following the same schedule as tour “A” as shown on page 8, as far as Many-Glacier Hotel. Here we have an extra day in the heart of the mountain world — from Wednesday noon until Friday afternoon, then returning from Many-Glacier on the identical schedule of tour “C” as shown on page 17, arriving Minneapolis and St. Paul, Monday morning, then for a 300-mile daylight ride alongside the Mississippi River, reaching Chicago at 7.55 p.m., Monday, St. Louis 7.00 a.m., Tuesday.

Through Glacier Park — Pullman, Meals, Lodging, Motor Trips — All Necessary Expenses				
COST OF COMPLETE TOUR	FROM CHICAGO		FROM ST. LOUIS	
	Without Railroad Ticket	With Railroad Ticket	Without Railroad Ticket	With Railroad Ticket
1 person to a lower berth	\$111.80	\$172.70	\$118.18	\$181.73
2 persons to a lower berth (each)	94.68	155.58	98.87	162.42
1 person to an upper berth	104.95	165.85	110.45	174.00



Black Hills—Glacier Park—Tour "K"

Complete Schedule and Itinerary

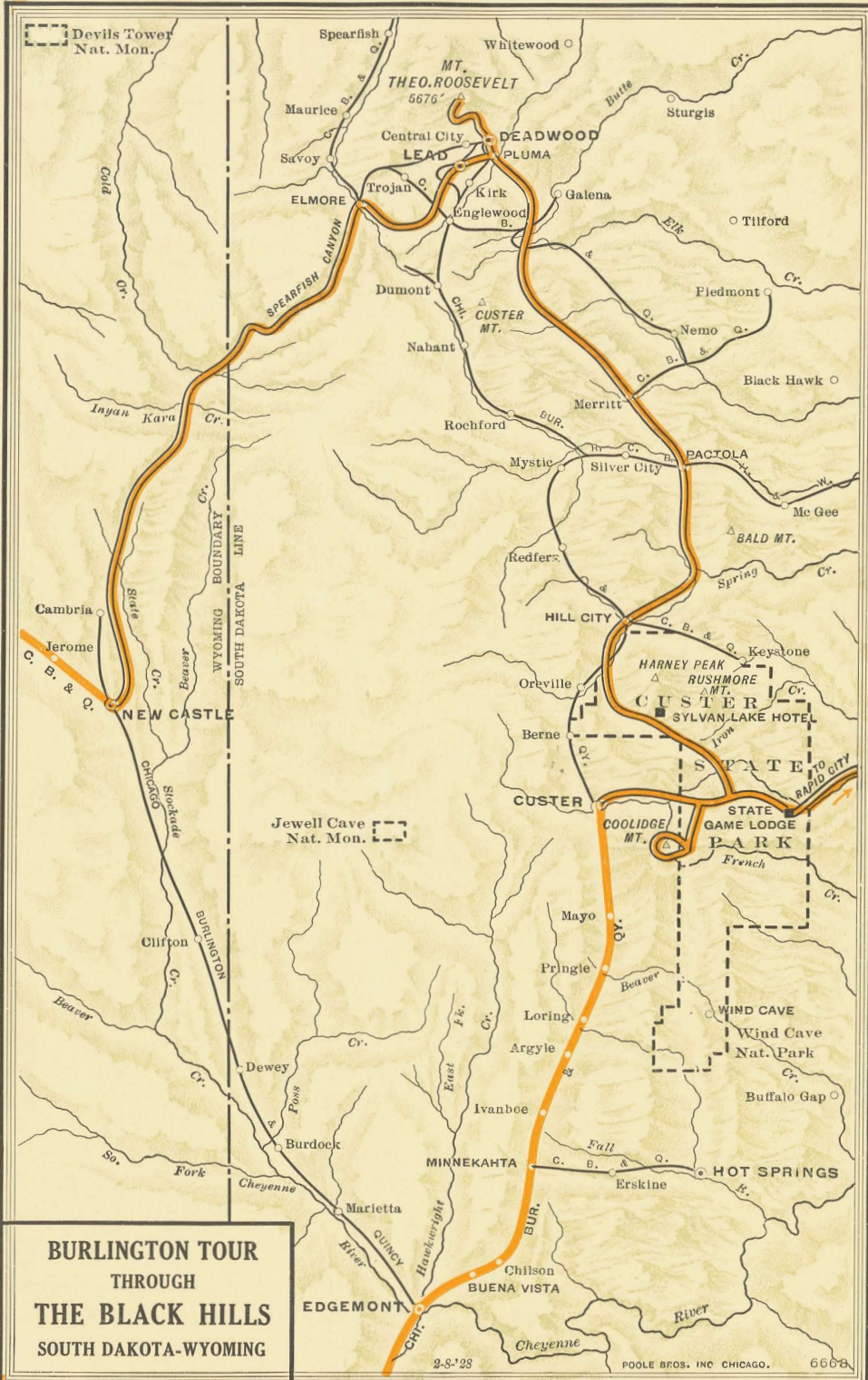
This is an extremely worthwhile eleven day tour made possible through a fortunate combination of two other tours that are described in detail elsewhere in this booklet.

Leave Chicago at 11.30 p.m. and St. Louis at 9.01 p.m., on Thursday and follow the same day-by-day schedule as Tour "L," as detailed on Page 40—through the Black Hills of South Dakota and on up to Billings, Montana, which is reached at 9.00 p.m. on Monday.

At Billings we join forces with the party comprising Tour "C" and follow the same day-by-day program exactly as shown on Page 17—through the Glacier Park mountain-land, returning on the Great Northern via Minneapolis and St. Paul, thence for a daylight ride over the Burlington's Mississippi River Scenic Line, reaching Chicago 7.55 p.m., Monday, or St. Louis at 7.00 a.m., Tuesday.

Through Black Hills and Glacier Park—Pullman, Meals, Lodging, Motor Trips—All Necessary Expenses

COST OF COMPLETE TOUR	FROM CHICAGO		FROM ST. LOUIS	
	Without Railroad Ticket	With Railroad Ticket	Without Railroad Ticket	With Railroad Ticket
1 person to a lower berth.....	\$145.51	\$206.41	\$150.51	\$214.06
2 persons to a lower berth (each).....	127.63	188.53	130.76	194.31
1 person to an upper berth.....	138.35	199.25	142.60	206.15



Devils Tower Nat. Mon.

Jewell Cave Nat. Mon.

**BURLINGTON TOUR
THROUGH
THE BLACK HILLS
SOUTH DAKOTA-WYOMING**

2-5-'28

POOLE BROS. INC. CHICAGO. 6668



The Black Hills of South Dakota

THEY are under-valued by the name. They are really mountains — and the highest in all the two thousand miles between the Atlantic Coast and the Rockies. And they are not black at all. They are green with forests of pine and blue with spruce and gray with some of the most remarkable and interesting granite formations to be found anywhere.

When Nature built them she gave them foundations of gold and silver, copper, tin, lead, lithium, tungsten, mica, coal and marble. She reared them in the purest of dry invigorating air laden with the fragrance of the pines and possessed of qualities both pleasant and beneficial. She loosed mountain torrents which have gridded the slopes with tremendous canyons, piled great rock masses one upon another in a way which has no counterpart anywhere. Man, too — red man and white — has had a hand in the evolution of the Black Hills. Cheyenne and Sioux battled mightily for possession of a great hunting ground and the healing waters — gift of the "Great Spirit."

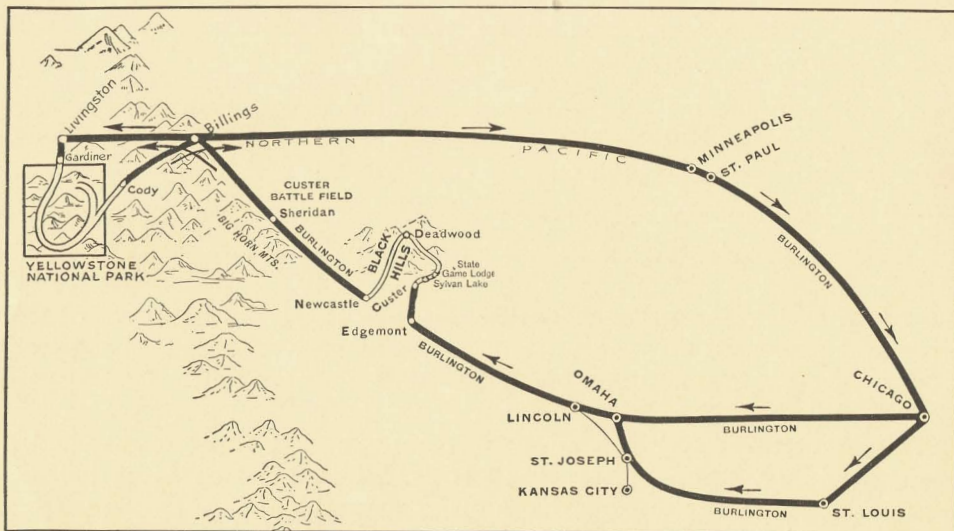
One day a prospector for gold found a breath-taking deposit of yellow metal and started one of the most sensational gold stampedes of all time. Croesus may well have envied Lead, S. D., its great "HOMESTAKE"—richest mine in the world, out of which has come more than \$300,000,000 in gold and which is still producing at the rate of \$6,000,000 per year.

There is Deadwood — remindful of road agents, cross country stage coaches, fortunes easily won by day with pick, shovel and placer pan and as easily lost over green-covered tables during reckless nights.

There is Custer, where the illustrious Major General rendezvoused during the Indian wars.

Except that a system of remarkable motor highways now takes the place of the famous old Cheyenne-Sidney-Deadwood Gulch gold trail and high powered motors with observation tops have supplanted the six-horse stage coach, the Black Hills remain much the same as in the wild old days of Deadwood Dick, Buffalo Bill Cody, Wild Bill Hickok, Calamity Jane, Pawnee Bill Liebe, Preacher Smith and many more famous in the old gold days. Hardly any region of like area possesses a greater wealth of scenic attraction or is more steeped in the tradition of frontier days.

For the first time, a way has been provided through *Burlington Escorted Tours* to make efficiently a wonderful two-day motor trip embracing all the chief points of interest in the Black Hills.



Black Hills—Yellowstone—Tour "L"

Complete Schedule and Itinerary

THURSDAY—Leave Chicago 11.30 p.m. from the new Union Station. Leave St. Louis at 9.01 p.m., via Burlington Route.

FRIDAY—St. Louis party is en route via St. Joseph, reaching Omaha at 11.50 a.m. for luncheon at the Fontanelle Hotel, followed by an afternoon sightseeing tour by motor, joining the Chicago party and leaving Omaha at 4.25 p.m.

SATURDAY—Arrive Custer, South Dakota, at 10.20 a.m., where we board automobiles for a two-day scenic tour through the Black Hills of South Dakota, going first to Sylvan Lake for luncheon and proceeding in the afternoon over the Needles Highway, to the top of Mount Coolidge, and so to the State Game Lodge, famous summer White House, for dinner, continuing afterward by motor to Rapid City for overnight.

SUNDAY—Motor through the State Game Park, via Grace Coolidge Canyon, Iron Creek Canyon, again over the Needles Highway to Sylvan Lake for our second luncheon at this place, and afterwards heading north through Horse Creek Canyon, Rapid Creek Canyon, Bloody Gulch, and Gold Run Gulch, stopping at Lead to visit the Homestake Gold Mine, which is the largest in the world, having been in continuous operation for fifty years and yielded more than three hundred million dollars worth of gold and still producing at the rate of six million dollars' worth per year. On to Deadwood over a portion of the historic Cheyenne—Deadwood Gold Trail over which passed such characters as Buffalo Bill Cody, Wild Bill Hickok, Deadwood Dick, Calamity Jane, Pawnee Bill, Major General George A. Custer, and many more famous in the old gold days. Dinner and overnight at the Franklin Hotel.



MONDAY—We have to get up before breakfast this morning. Leave Deadwood 7.00 a.m., by motor via Ice-box Canyon, Spearfish Canyon, Hell's Gate, Cold Creek Canyon, and Inyan Kara Creek, arriving at Newcastle at 9.45 a.m., where we board our Pullmans for the trip northwestward via Sheridan, through the great reservation of the Crow Indian Nation, stopping meanwhile for a splendid close-up view of the Custer Battlefield.

TUESDAY—Arrive Gardiner Gateway to Yellowstone at 9.30 a.m. and motor immediately to the first stopping place, which is Mammoth Hot Springs, famed for its acres of wonderful rock terraces.

WEDNESDAY—Motor via the Norris Geyser Basin and the Fountain Geyser Basin to the Old Faithful area where we will see more geysers, colored pools, hot springs, caves, caverns, grottos, and other crazy, queer sights than can be found anywhere else in the world. Twenty-four hours here and each hour full of interesting activity.

THURSDAY—Twice across the Continental Divide and along the Shore Drive to our destination on Yellowstone Lake, where dinner precedes a visit to see the bears which gather in considerable numbers at the nearby feeding grounds.

FRIDAY—Alongside the Yellowstone River through Hayden Valley, up to the Grand Canyon of the Yellowstone, with a side trip up to Dunraven Pass. Afternoon given over to exploring the famous painted chasm and enjoying the tremendous Lower Fall from various viewpoints.

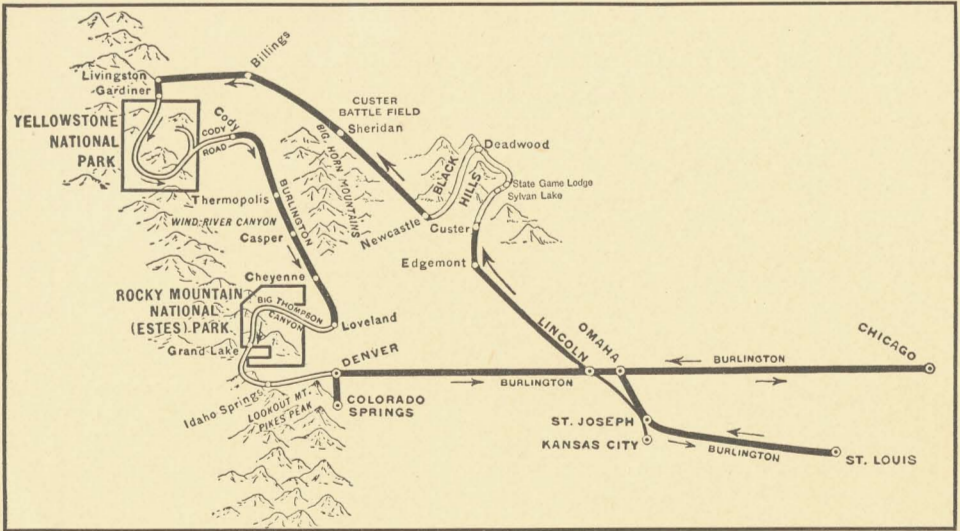
SATURDAY—Out of Yellowstone over the thrilling Cody Road — 90-mile mountain motor highway over Sylvan Pass, and through the Buffalo Bill Country, ending with the six-mile canyon of the Shoshone River — and so to Cody, Wyoming, for dinner and our Pullmans. Leave Cody, 8.30 p.m.

SUNDAY—Homeward bound on the Northern Pacific — through the old Indian country, the weird Bad Lands region of North Dakota and the vast stock and grain ranches.

MONDAY—Arrive Minneapolis at 6.45 a.m. and St. Paul at 7.15 a.m., winding up fittingly with an enjoyable daylight train ride for three hundred miles along the Wisconsin shore of the upper Mississippi River. Arrive Chicago 7.55 p.m. St. Louis people reach home Tuesday morning at seven.

Through Black Hills and Yellowstone Park — Pullman, Meals, Lodging, Motor Trips
—All Necessary Expenses

COST OF COMPLETE TOUR	FROM CHICAGO		FROM ST. LOUIS	
	Without Railroad Ticket	With Railroad Ticket	Without Railroad Ticket	With Railroad Ticket
1 person to a lower berth.	\$144.01	\$203.36	\$149.01	\$210.96
2 persons to a lower berth (each).	128.63	187.98	131.76	193.71
1 person to an upper berth.	37.85	197.20	142.10	204.05
1 person to a lower berth.	\$135.01	\$194.36	\$140.01	\$201.96
2 persons to a lower berth (each).	119.63	178.98	122.76	184.71
1 person to an upper berth.	128.85	188.20	133.10	195.05



Black Hills—Yellowstone—Colorado—Tour "M"

Schedule and Itinerary

A three-in-one combination tour covering a surprising lot of ground in a trifle over two week's time — and every mile of the way full of interest.

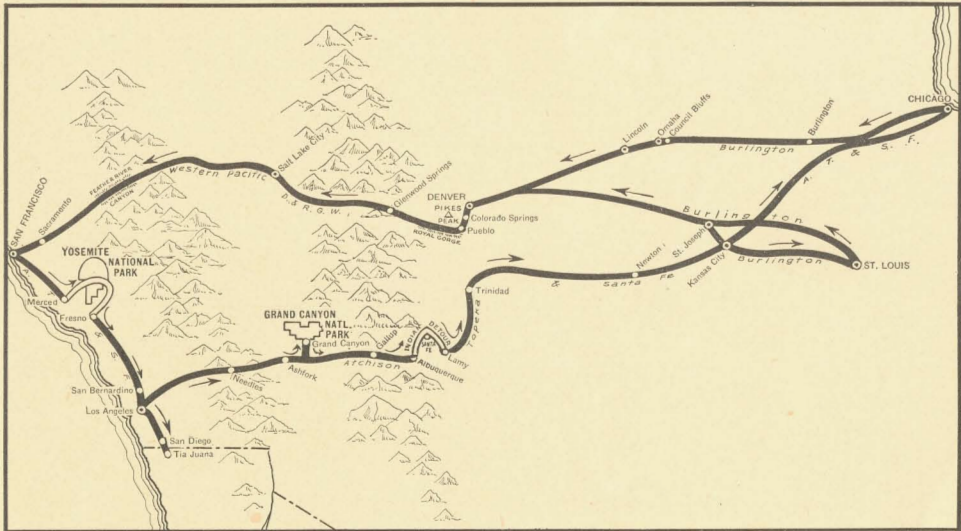
Leave Chicago at 11.30 p.m. and St. Louis at 9.01 p.m., on Thursday, via Burlington following the same day-to-day itinerary as Tour "L" as shown on pages 40 and 41; through the Black Hills of South Dakota, complete five-day tour through the magic geyser-land of Yellowstone, and out of the Park via the Cody Gateway, arriving Cody on Saturday for dinner and overnight.

We join Tour "D" at Cody next morning following the same schedule as shown on page 21 for the trip to Estes Park, and over the two hundred mile Grand Circle Tour of Rocky Mountain National Park, plus a busy day in the Colorado Springs-Pikes Peak sector of the Rockies.

Returning, you reach Chicago 7.00 a.m. Saturday; St. Louis 7.25 a.m. Saturday.

Through Black Hills, Yellowstone and Colorado—Pullman, Meals, Lodging, Motor Trips—All Necessary Expenses

COST OF COMPLETE TOUR		FROM CHICAGO		FROM ST. LOUIS	
		Without Railroad Ticket	With Railroad Ticket	Without Railroad Ticket	With Railroad Ticket
1 person to a lower berth.	Hotels Thru Yellowstone	\$209.29	\$268.64	\$209.79	\$271.74
2 person to a lower berth (each).		190.97	250.32	191.85	253.80
1 person to an upper berth.		201.95	261.30	202.60	264.55
1 person to a lower berth.	Lodges Thru Yellowstone	\$200.29	\$259.64	\$200.79	\$262.74
2 persons to a lower berth (each).		181.97	241.32	182.85	244.80
1 person to an upper berth.		192.95	252.30	193.60	255.55



Colorado — California — Grand Canyon — Tour "P"

Leaving Sunday June 17, July 1-8-15-29, Aug. 5-12

A 20-day tour leaving Chicago at 10.30 a.m. and St. Louis at 2.15 p.m.—a 6000-mile scenic survey of the far-flung west from the Great Lakes to California's golden strand.

Westward via the famous daylight scenic route with an afternoon for sight-seeing in Denver; more sightseeing (Cheyenne Mountain and Garden of the Gods) in Colorado Springs, the Royal Gorge, Colorado Rockies, a morning in Salt Lake City for motoring and noon-day organ recital in the Mormon Tabernacle, the famous Feather River Canyon of the Sierra Nevada Mountains, Sacramento, two enjoyable days in San Francisco and a two-day tour of Yosemite National Park and the Mariposa Grove of big trees, end-

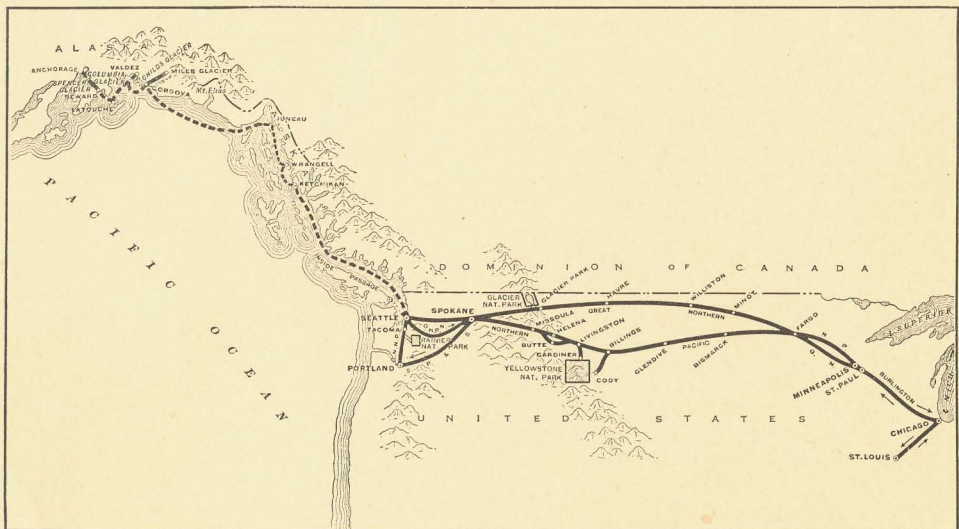
ing up the westward journey with four days in Los Angeles including a trip to Catalina Island and two more days in San Diego, with a trip across the Mexican border to Tia Juana.

Coming back through the painted Southwest on the Santa Fe with a day at the eighth wonder of the world — the Grand Canyon of Arizona — and the better part of two other days motoring over the Indian detour, among the prehistoric pueblos and ruins of an earlier civilization, with a night in colorful old Santa Fe.

We have published a special folder about this wonderful California tour giving day to day itinerary and full details, which we will be glad to mail upon request.

Through Yosemite, Grand Canyon and Indian Detour. Including Pullman, Hotels, all Meals, Motor Trips

COST OF COMPLETE TOUR	FROM CHICAGO		FROM ST. LOUIS	
	Without Railroad Ticket	With Railroad Ticket	Without Railroad Ticket	With Railroad Ticket
1 person in a lower berth	\$256.74	\$362.16	\$251.23	\$351.95
2 persons in a lower berth (each)	225.11	330.53	221.11	321.83
1 person in an upper berth	244.08	349.50	239.18	339.90



Alaska Tour [Destination Seward]

Via The Pacific Northwest and Rainier National Park
 TOUR S-2. Leaving Chicago, July 7; St. Louis, July 6.
 TOUR S-4. Leaving Chicago, Aug. 4; St. Louis, Aug. 3.

A remarkable 26-day tour starting with a daylight ride along the Mississippi; later crossing and recrossing the historic Lewis and Clark overland trail of more than 120 years ago, across a dozen mountain ranges to the Pacific Coast.

Visits and sight-seeing trips in Portland, over the Columbia River Highway, Tacoma, Rainier National Park, Seattle, thence a 16-day sea trip through the famous "inside passage" to Seward, Alaska, with interesting stopovers en route at Ketchikan, Wrangell, Juneau, Cordova, Valdez and Latouche. There are rail trips to the interior — from Cordova to Miles' Glacier and Child's Glacier to see two world marvels — done in ice; and another from Seward on the Alaska Railroad (U. S. Gov't) past Spencer Glacier to Anchorage for overnight.

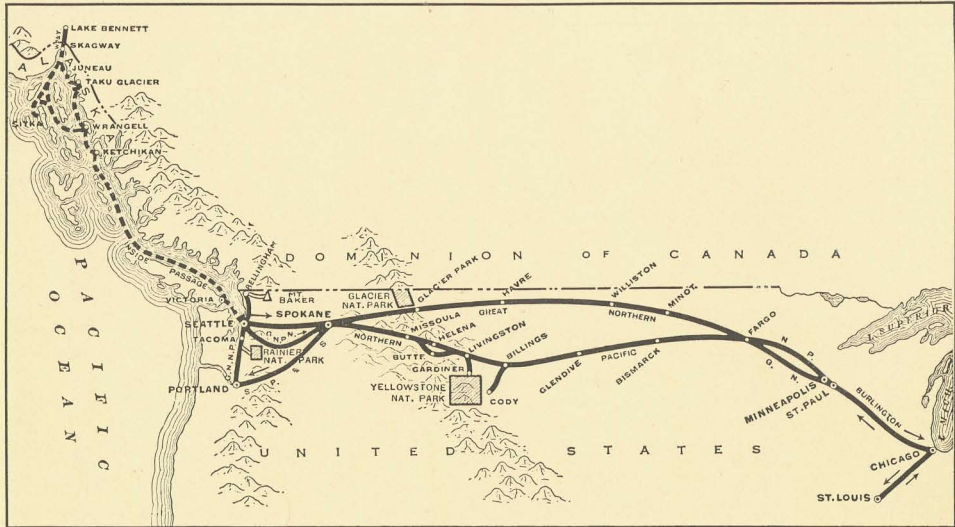
A wonderful vacation expedition to the mysterious land where the sun shines at midnight and where myriad flowers carpet sunny valleys in the shadow of colossal ice cliffs as old as time itself.

Complete details with day-to-day itinerary are given in a special Alaska folder which will be mailed gladly upon request.

Including Pullman, Hotels, all Meals, Motor Trips, Rainier and Alaska

COST OF COMPLETE TOUR	FROM CHICAGO		FROM ST. LOUIS	
	Without Railroad Ticket	With Railroad Ticket	Without Railroad Ticket	With Railroad Ticket
1 person to a lower berth	\$312.81	\$403.11	\$322.81	\$413.11
2 persons to a lower berth (each)	288.56	378.86	294.81	385.11
1 person to an upper berth	303.10	393.40	311.60	401.90

Above rates for berth in room on Saloon Deck. For berth in room on Upper Deck, \$16.00 higher.



Alaska Tour [Destination Skagway]

Via The Pacific Northwest and Rainier National Park or Mt. Baker.

TOUR S-1. Leaving Chicago, July 3; St. Louis, July 2

TOUR S-3. Leaving Chicago, July 24; St. Louis, July 23

An 18-day rail-and-sea vacation tour through the northern states and across the Montana Rockies, the Cascade Mountains, a dozen ranges in all — to the Pacific Coast, with special sight-seeing tours at Portland, Tacoma, Seattle, plus the Columbia River Highway and beautiful Rainier National Park or Mt. Baker. Then out over Puget Sound on a great ship bound for strange new lands. A trip of indescribable scenic charm through the world-famed "inside passage" with shore leave for sight-seeing at Victoria, Ketchikan, then to the tremendous cliff of ice which is the great Taku Glacier, Juneau, and Skagway. A thrilling rail trip on the White Pass & Yukon Railway through the awe-inspiring Skagway Canyon up which a turbulent tide of humanity swarmed in '98 in the lust for Klondike gold. Up Dead Horse Gulch, over White Pass, and into Canada to the shore of lovely Lake Bennett in the Atlin district.

Then back to Skagway; through the Lynn Canal and over to Sitka with its old Greek-Russian church and other historic attractions.

Ask for special Alaska folder giving full details and day-to-day itinerary.

Including Pullman, Hotels, all Meals, Motor Trips, Rainier or Mt. Baker and Alaska

COST OF COMPLETE TOUR	FROM CHICAGO		FROM ST. LOUIS	
	Without Railroad Ticket	With Railroad Ticket	Without Railroad Ticket	With Railroad Ticket
1 person to a lower berth	\$258.31	\$348.61	\$268.31	\$358.61
2 persons to a lower berth (each)	234.06	324.36	240.31	330.61
1 person to an upper berth	248.60	338.90	257.10	347.40

Above rates for berth in room on B Deck. For berth in room on A Deck, \$25.00 higher.
For berth in room on C Deck \$10.00 less than above.



*A glimpse of the famous terraces at
Mammoth Hot Springs
Yellowstone National Park
© Haynes*

General Information

COST OF TOURS

THE cost of each "Burlington Escorted Tour" covers all necessary expenses en route — sleeping car accommodations, the automobile fares, the hotels, all meals, the sight-seeing tours and the various other diversions, and the tour of the national parks, with or without railroad ticket (but does not include tips which are considered purely personal). We are confident that our guests will be entirely pleased with all arrangements — all that is expected is that they place themselves in our care, that they abandon every perplexity of travel and enter into the spirit of the tours, letting our organization do the rest.

The figures shown herein from Chicago and St. Louis *without rail ticket* are the tour costs for passengers coming from east and south of these points with rail ticket purchased at home station in order to obtain the full benefit of the low round trip Summer Excursions rates.

Rates for children will be based on age and accommodations desired for them.



COST DEPENDS UPON PULLMAN SPACE

It will be noted that the cost of a tour varies according to Pullman accommodations used and that the individual cost is less if two persons occupy one berth or if two or more persons occupy one compartment or drawing-room. Specific rates are quoted for berths (upper and lower). Quotations involving section, compartment or drawing-room will depend upon number of occupants and will be given upon request.

HOTEL ACCOMMODATIONS

Costs quoted contemplate two persons per room without bath. Single rooms are seldom available. Rooms with bath are to be had at all stopping points at usual extra cost.

ACCOMMODATIONS IN YELLOWSTONE

There are two types of accommodation in Yellowstone Park — hotels and lodges.

The hotels are great hostleries, modern in appointments and attractive as to architecture. Dancing every evening except Sunday.

The lodges are miniature villages of rustic buildings embracing community recreation halls, dining rooms where all have meals family style, post office, etc.—surrounded by the groups of lodges which are the sleeping quarters. Here one can have all the enjoyment of camp life without any of its usual discomforts. There is special entertainment at the lodges every evening including impromptu features by guests and dancing every evening except Sunday.

PURCHASE THROUGH RAIL TICKET

Passengers coming from points east or south of Chicago or St. Louis should purchase through summer excursion ticket from their home station and in this way obtain the full benefit of the low round trip tourist railroad fare. Your home agent will be glad to arrange your reservation and issue tickets in accordance with routing shown on Page 51.

HOW TO JOIN TOURS

Bookings for tours should be arranged through J. G. Delaplaine, Manager, Burlington Tours, 547 West Jackson Blvd., Chicago. However, all Burlington Route, Great Northern and Northern Pacific Railway representatives are authorized agents for these tours and are prepared to render every assistance in the way of supplying detailed information, making reservations and definitely booking passengers.



*Highway through "The Needles"
Black Hills*

Use reservation blank on page 55, being particular to give all information requested therein.

Final arrangements and full payment for tour must be made seven days before departure.

Bookings are not made for holders of free railroad transportation.

ESCORT WITH TOURS

Each tour will be in charge of a well-informed, experienced railroad representative who will serve as escort and business manager, relieving passengers of all travel details and smoothing the way to a memorable care-free vacation.

MEALS

Tour costs shown herein include all meals—on the trains the famous dining-car service of the Burlington, Great Northern and Northern Pacific—elsewhere at first-class hotels.

HORSEBACK TRIPS

Saddle horses may be hired at all hotels in *Glacier Park; at Old Faithful and the Grand Canyon in Yellowstone Park, at the Estes Park Chalets and Grand Lake in Rocky Mountain National Park.

*Those preferring to make the trip between Many-Glacier Hotel and Going-to-the Sun by horseback over Piegan Pass, instead of via motor and boat, can do so at an extra charge of \$1.50



SWIMMING POOLS

There are inside plunges in the Glacier Park and Many-Glacier Hotels, and at Helena, and a mineral water natatorium at Idaho Springs, Colorado. A great feature of a Yellowstone Tour is usually a swim in the open pools of geyser water (naturally warm) at Mammoth Hot Springs Lodge and Old Faithful. Charge for plunge, including bathing suit, is fifty cents.

YOUR APPAREL AND BAGGAGE

For these short summer tours where long distances by train and automobile are covered daily, trunks are unnecessary. Suitcases or traveling bags large enough to hold sufficient clothing can be carried easily everywhere throughout the tour. The free allowance of hand baggage which may be carried in automobiles in the National Parks is one piece weighing twenty-five pounds.

While these are summer journeys, the nights in the mountains and the cool and invigorating auto rides make desirable, medium weight and even heavy wraps, overcoats, sport coats, sweater coats, and the like. Traveling and outing suits and knickers are worn throughout the mountain territory. Outdoor life, motor rides, trail trips, etc., in these mountain altitudes and dry climate suggest the advisability of including cold cream in your outfit. Colored glasses also will be found convenient.

A most useful, all-round outer coat is a wind and weather-proof affair of medium weight.

Stout sport shoes should be worn. In the hotels, after the day's itinerary, the dinner hour and evening lounge or dance naturally suggest a change from the habiliments of travel and out-of-door life.

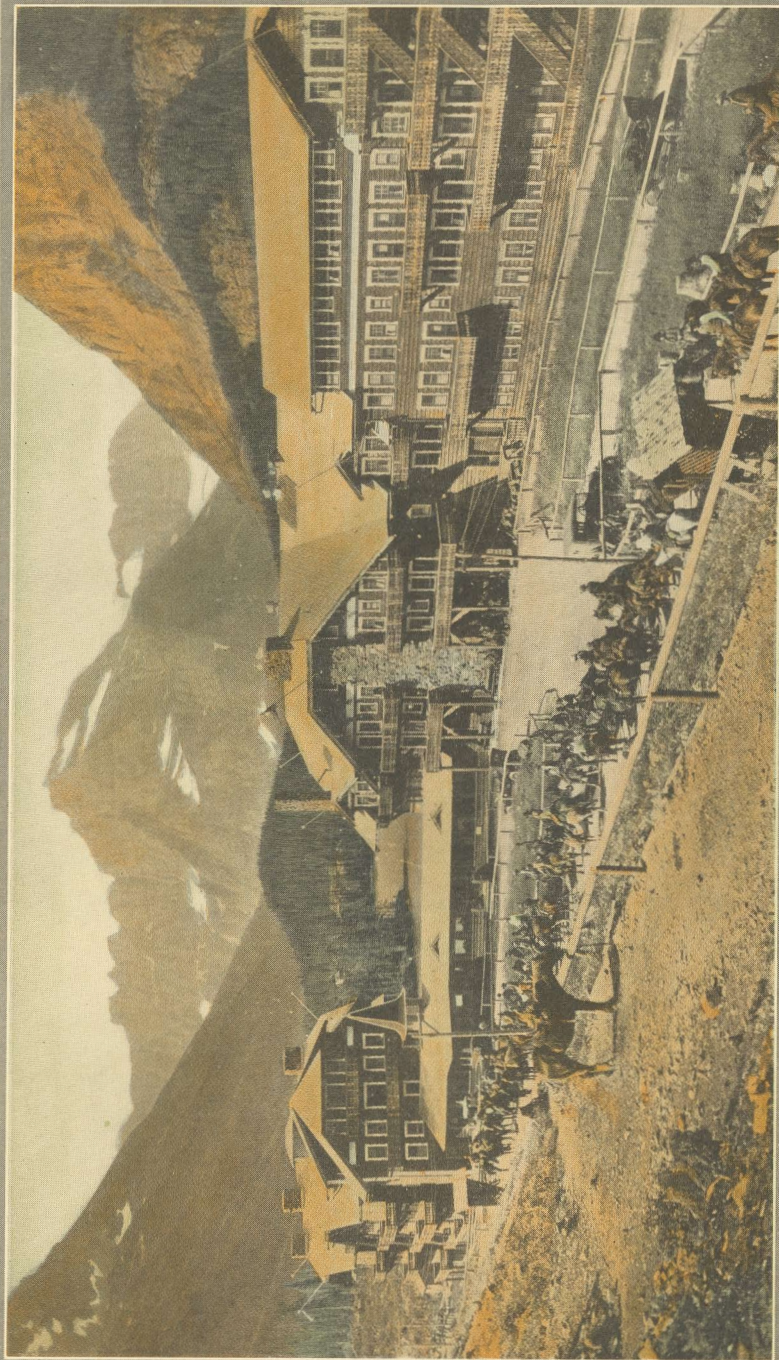
DESCRIPTIVE BOOKLETS

This booklet of "*Burlington Escorted Tours*," manifestly can be but a practical description of the tours, and information as to joining them. You are invited to ask for such of these additional descriptive publications as appeal to you in the consideration of any tour.

We shall be pleased to mail them free of charge.

Yellowstone Park
Glacier Park
Rocky Mountain National —
(Estes) Park
Rainier National Park
Scenic Colorado
The Cody Road

The Mississippi River
Scenic Line
Alaska
Pacific Northwest
Black Hills
California
Mt. Baker



*The famous Many-Glacier Hotel in
the heart of the mountain world—
Glacier National Park*

Ticket Routing for Various Tours

Railroad tickets should be routed as follows from Chicago or St. Louis:

- TOUR A—Destination *Glacier Park, Mont.* Burlington Route to St. Paul, Great Northern to Glacier Park, returning Great Northern to Helena; Northern Pacific to Gardiner; Burlington Route, Cody to Billings; Northern Pacific to St. Paul; Burlington Route to Chicago and if to St. Louis any direct route from Chicago.
- TOURS B and E—Destination *Yellowstone Park, Wyo.* Burlington Route to Denver, Colorado & Southern to Colorado Springs; Colorado & Southern to Denver; Colorado & Southern to Wendover; Burlington Route to Billings; Northern Pacific to Gardiner, returning Burlington Route, Cody to Billings; Northern Pacific to St. Paul; Burlington Route to Chicago and if to St. Louis any direct route from Chicago.
- TOUR C—Destination *Yellowstone Park, Wyo.* Burlington Route to St. Paul, Northern Pacific to Gardiner, returning Burlington Route, Cody to Billings, Great Northern to Glacier Park; Great Northern to St. Paul, Burlington Route to Chicago and if to St. Louis any direct route from Chicago.
- TOUR D—Destination *Yellowstone Park, Wyo.* Burlington Route to St. Paul, Northern Pacific to Gardiner, returning Burlington Route Cody to Wendover, Colorado & Southern to Denver. Colorado & Southern to Colorado Springs, Colorado & Southern to Denver, Burlington Route to Chicago or St. Louis.
- TOURS F and G—Destination *Glacier Park, Mont.* Burlington Route to Denver; Colorado & Southern to Colorado Springs; Colorado & Southern to Denver; Colorado & Southern to Wendover; Burlington Route to Billings; Northern Pacific to Gardiner; Burlington Route, Cody to Billings; Great Northern to Glacier Park; returning Great Northern to St. Paul; Burlington Route to Chicago and if to St. Louis any direct route from Chicago.
- TOUR H—Destination *Yellowstone Park, Wyo.* Burlington Route to St. Paul, Northern Pacific to Gardiner, returning Burlington Route, Cody to Billings; Northern Pacific to St. Paul, Burlington Route to Chicago and if to St. Louis any direct route from Chicago.
- TOUR J—Destination *Glacier Park, Mont.* Burlington Route to St. Paul, Great Northern to Glacier Park, returning Great Northern to St. Paul, Burlington Route to Chicago and if to St. Louis any direct route from Chicago.
- TOUR K—Destination *Glacier Park, Mont.* Burlington Route to Billings, Great Northern to Glacier Park, returning Great Northern to St. Paul, Burlington Route to Chicago and if to St. Louis any direct route from Chicago.
- TOUR L—Destination *Yellowstone Park, Wyo.* Burlington Route to Billings; Northern Pacific to Gardiner; returning Burlington Route Cody to Billings; Northern Pacific to St. Paul; Burlington Route to Chicago and if to St. Louis any direct route from Chicago.
- TOUR M—Destination *Yellowstone Park, Wyo.* Burlington Route to Billings; Northern Pacific to Gardiner; returning Burlington Route Cody to Wendover; Colorado & Southern to Denver; Colorado & Southern to Colorado Springs; Colorado & Southern to Denver and Burlington Route to Chicago or St. Louis.

Calendar Schedule Burlington Escorted Tours

Glacier-Yellowstone Tour			A-1	A-2	A-3	A-4	A-5	A-6	A-7	A-8	A-9	A-10	A-11	A-12	
Lv. Chicago...	11.00 pm.	Sat.	June 16	June 23	June 30	July 7	July 14	July 21	July 28	Aug. 4	Aug. 11	Aug. 18	Aug. 25	Sept. 1	1
Lv. St. Louis...	2.15 pm.	Sat.	" 16	" 23	" 30	" 7	" 14	" 21	" 28	" 4	" 11	" 18	" 25	" 1
Lv. St. Paul...	11.00 pm.	Sun.	" 17	" 24	July 1	" 8	" 15	" 22	" 29	" 5	" 12	" 19	" 26	" 2
Lv. Minneapl's...	11.30 pm.	Sun.	" 17	" 24	" 1	" 8	" 15	" 22	" 29	" 5	" 12	" 19	" 26	" 2
Ar. Glacier Pk...	8.05 am.	Tues.	" 19	" 26	" 3	" 10	" 17	" 24	" 31	" 7	" 14	" 21	" 28	" 4
Lv. Glacier Pk...	11.59 pm.	Fri.	" 22	" 29	" 6	" 13	" 20	" 27	Aug. 3	" 10	" 17	" 24	" 31	" 7
Ar. Helena...	11.20 am.	Sat.	" 23	" 30	" 7	" 14	" 21	" 28	" 4	" 11	" 18	" 25	" 1	" 8
Ar. Gardiner...	9.30 am.	Sun.	" 24	July 1	" 8	" 15	" 22	" 29	" 5	" 12	" 19	" 26	" 2	" 9
Lv. Cody...	8.30 pm.	Thur.	" 28	" 5	" 12	" 19	" 26	Aug. 2	" 9	" 16	" 23	" 30	" 6	" 13
Ar. Minneapl's...	6.45 am.	Sat.	" 30	" 7	" 14	" 21	" 28	" 4	" 11	" 18	" 25	" 1	" 8	" 15
Ar. St. Paul...	7.15 am.	Sat.	" 30	" 7	" 14	" 21	" 28	" 4	" 11	" 18	" 25	" 1	" 8	" 15
Ar. Chicago...	7.55 pm.	Sat.	" 30	" 7	" 14	" 21	" 28	" 4	" 11	" 18	" 25	" 1	" 8	" 15
Ar. St. Louis...	7.00 am.	Sun.	July 1	" 8	" 15	" 22	" 29	" 5	" 12	" 19	" 26	" 2	" 9	" 16

Colorado-Yellowstone Tour			B-1	B-2	B-3	B-4	B-5	B-6	B-7	B-8	B-9	B-10		
Lv. Chicago...	11.30 pm.	Thur.	June 14	June 21	June 28	July 5	July 12	July 19	July 26	Aug. 2	Aug. 9	Aug. 16		
Lv. St. Louis...	9.01 pm.	Thur.	" 14	" 21	" 28	" 5	" 12	" 19	" 26	" 2	" 9	" 16		
Lv. Omaha...	4.25 pm.	Fri.	" 15	" 22	" 29	" 6	" 13	" 20	" 27	" 3	" 10	" 17		
Ar. Denver...	7.15 am.	Sat.	" 16	" 23	" 30	" 7	" 14	" 21	" 28	" 4	" 11	" 18		
Ar. Colo. Sprgs.	7.00 am.	Sun.	" 17	" 24	July 1	" 8	" 15	" 22	" 29	" 5	" 12	" 19		
Ar. Grand Lk...	5.00 pm.	Mon.	" 18	" 25	" 2	" 9	" 16	" 23	" 30	" 6	" 13	" 20		
Lv. Loveland...	8.13 pm.	Tues.	" 19	" 26	" 3	" 10	" 17	" 24	" 31	" 7	" 14	" 21		
Ar. Gardiner...	9.30 am.	Thur.	" 21	" 28	" 5	" 12	" 19	" 26	Aug. 2	" 9	" 16	" 23		
Lv. Cody...	8.30 pm.	Mon.	" 25	July 2	" 9	" 16	" 23	" 30	" 6	" 13	" 20	" 27		
Ar. Minneapl's...	6.45 am.	Wed.	" 27	" 4	" 11	" 18	" 25	Aug. 1	" 8	" 15	" 22	" 29		
Ar. St. Paul...	7.15 am.	Wed.	" 27	" 4	" 11	" 18	" 25	" 1	" 8	" 15	" 22	" 29		
Ar. Chicago...	7.55 pm.	Wed.	" 27	" 4	" 11	" 18	" 25	" 1	" 8	" 15	" 22	" 29		
Ar. St. Louis...	7.00 am.	Thur.	" 28	" 5	" 12	" 19	" 26	" 2	" 9	" 16	" 23	" 30		

Yellowstone-Glacier Tour			C-1	C-2	C-3	C-4	C-5	C-6	C-7	C-8	C-9	C-10		
Lv. Chicago...	11.00 pm.	Mon.	June 18	June 25	July 2	July 9	July 16	July 23	July 30	Aug. 6	Aug. 13	Aug. 20		
Lv. St. Louis...	2.15 pm.	Mon.	" 18	" 25	" 2	" 9	" 16	" 23	" 30	" 6	" 13	" 20		
Ar. St. Paul...	10.55 am.	Tues.	" 19	" 26	" 3	" 10	" 17	" 24	" 31	" 7	" 14	" 21		
Lv. Minneapl's...	11.35 pm.	Tues.	" 19	" 26	" 3	" 10	" 17	" 24	" 31	" 7	" 14	" 21		
Ar. Gardiner...	9.30 am.	Thur.	" 21	" 28	" 5	" 12	" 19	" 26	Aug. 2	" 9	" 16	" 23		
Lv. Cody...	8.30 pm.	Mon.	" 25	July 2	" 9	" 16	" 23	" 30	" 6	" 13	" 20	" 27		
Ar. Great Falls...	1.30 pm.	Tues.	" 26	" 3	" 10	" 17	" 24	" 31	" 7	" 14	" 21	" 28		
Ar. Glacier Pk...	8.05 am.	Wed.	" 27	" 4	" 11	" 18	" 25	Aug. 1	" 8	" 15	" 22	" 29		
Lv. Glacier Pk...	9.40 pm.	Sat.	" 30	" 7	" 14	" 21	" 28	" 4	" 11	" 18	" 25	Sept. 1		
Ar. Minneapl's...	7.00 am.	Mon.	July 2	" 9	" 16	" 23	" 30	" 6	" 13	" 20	" 27	" 3		
Ar. St. Paul...	7.30 am.	Mon.	" 2	" 9	" 16	" 23	" 30	" 6	" 13	" 20	" 27	" 3		
Ar. Chicago...	7.55 pm.	Mon.	" 2	" 9	" 16	" 23	" 30	" 6	" 13	" 20	" 27	" 3		
Ar. St. Louis...	7.00 am.	Tues.	" 3	" 10	" 17	" 24	" 31	" 7	" 14	" 21	" 28	" 4		

Yellowstone-Colorado Tour			D-1	D-2	D-3	D-4	D-5	D-6	D-7	D-8	D-9	D-10	D-11	D-12	D-13
Lv. St. Louis...	2.15 pm.	Sat.	June 16	June 23	June 30	July 7	July 14	July 21	July 28	Aug. 4	Aug. 11	Aug. 18	Aug. 25	Sept. 1	Sept. 8
Lv. Chicago...	10.35 am.	Sun.	June 17	June 24	July 1	July 8	July 15	July 22	July 29	Aug. 5	Aug. 12	Aug. 19	Aug. 26	Sept. 2	Sept. 9
Lv. St. Paul...	11.00 pm.	Sun.	" 17	" 24	" 1	" 8	" 15	" 22	" 29	" 5	" 12	" 19	" 26	" 2	" 9
Lv. Minneapl's...	11.35 pm.	Sun.	" 17	" 24	" 1	" 8	" 15	" 22	" 29	" 5	" 12	" 19	" 26	" 2	" 9
Ar. Gardiner...	9.30 am.	Tues.	" 19	" 26	" 3	" 10	" 17	" 24	" 31	" 7	" 14	" 21	" 28	" 4	" 11
Lv. Cody...	8.20 am.	Sun.	" 24	July 1	" 8	" 15	" 22	" 29	Aug. 5	" 12	" 19	" 26	Sept. 2	" 9	" 16
Ar. Estes Pk...	11.00 am.	Mon.	" 25	" 2	" 9	" 16	" 23	" 30	" 6	" 13	" 20	" 27	" 3	" 10	" 17
Ar. Grand Lk...	12.30 pm.	Tues.	" 26	" 3	" 10	" 17	" 24	" 31	" 7	" 14	" 21	" 28	" 4	" 11	" 18
Ar. Denver...	4.00 pm.	Wed.	" 27	" 4	" 11	" 18	" 25	Aug. 1	" 8	" 15	" 22	" 29	" 5	" 12	" 19
Ar. Colo. Sprgs.	7.00 am.	Thur.	" 28	" 5	" 12	" 19	" 26	" 2	" 9	" 16	" 23	" 30	" 6	" 13	" 20
Ar. Chicago...	7.00 am.	Sat.	" 30	" 7	" 14	" 21	" 28	" 4	" 11	" 18	" 25	Sept. 1	" 8	" 15	" 22
Ar. St. Louis...	7.25 am.	Sat.	" 30	" 7	" 14	" 21	" 28	" 4	" 11	" 18	" 25	" 1	" 8	" 15	" 22

Colorado-Yellowstone Tour			E-1	E-2	E-3	E-4	E-5	E-6	E-7	E-8	E-9	E-10		
Lv. Chicago...	11.30 pm.	Sat.	June 16	June 23	June 30	July 7	July 14	July 21	July 28	Aug. 4	Aug. 11	Aug. 18		
Lv. St. Louis...	2.15 pm.	Sun.	" 17	" 24	July 1	" 8	" 15	" 22	" 29	" 5	" 12	" 19		
Lv. Omaha...	4.25 pm.	Sun.	" 17	" 24	" 1	" 8	" 15	" 22	" 29	" 5	" 12	" 19		
Lv. Denver...	11.30 pm.	Mon.	" 18	" 25	" 2	" 9	" 16	" 23	" 30	" 6	" 13	" 20		
Ar. Colo. Sprgs.	7.00 am.	Tues.	" 19	" 26	" 3	" 10	" 17	" 24	" 31	" 7	" 14	" 21		
Ar. Grand Lk...	5.00 pm.	Wed.	" 20	" 27	" 4	" 11	" 18	" 25	Aug. 1	" 8	" 15	" 22		
Ar. Estes Pk...	5.00 pm.	Thur.	" 21	" 28	" 5	" 12	" 19	" 26	Aug. 2	" 9	" 16	" 23		
Lv. Loveland...	8.13 pm.	Fri.	" 22	" 29	" 6	" 13	" 20	" 27	" 3	" 10	" 17	" 24		
Ar. Gardiner...	9.30 am.	Sun.	" 24	July 1	" 8	" 15	" 22	" 29	" 5	" 12	" 19	" 26		
Lv. Cody...	8.30 pm.	Thur.	" 28	" 5	" 12	" 19	" 26	Aug. 2	" 9	" 16	" 23	" 30		
Ar. Minneapl's...	6.45 am.	Sat.	" 30	" 7	" 14	" 21	" 28	" 4	" 11	" 18	" 25	Sept. 1		
Ar. St. Paul...	7.15 am.	Sat.	" 30	" 7	" 14	" 21	" 28	" 4	" 11	" 18	" 25	" 1		
Ar. Chicago...	7.55 pm.	Sat.	" 30	" 7	" 14	" 21	" 28	" 4	" 11	" 18	" 25	" 1		
Ar. St. Louis...	7.00 am.	Sun.	July 1	" 8	" 15	" 22	" 29	" 5	" 12	" 19	" 26	" 2		

Calendar Schedule Burlington Escorted Tours

Three Parks Tour			F-1	F-2	F-3	F-4	F-5	F-6	F-7	F-8	F-9	F-10		
Lv. Chicago . . .	11.30 pm.	Sat.	June 16	June 23	June 30	July 7	July 14	July 21	July 28	Aug. 4	Aug. 11	Aug. 18		
Lv. St. Louis . . .	2.15 pm.	Sun.	" 17	" 24	July 1	" 8	" 15	" 22	" 29	" 5	" 12	" 19		
Lv. Omaha . . .	4.25 pm.	Sun.	" 17	" 24	July 1	" 8	" 15	" 22	" 29	" 5	" 12	" 19		
Lv. Denver . . .	11.30 pm.	Mon.	" 18	" 25	" 2	" 9	" 16	" 23	" 30	" 6	" 13	" 20		
Ar. Colo. Sprgs.	7.00 am.	Tues.	" 19	" 26	" 3	" 10	" 17	" 24	" 31	" 7	" 14	" 21		
Lv. Grand Lk. . .	1.00 pm.	Thur.	" 21	" 28	" 5	" 12	" 19	" 26	Aug. 2	" 9	" 16	" 23		
Lv. Estes Pk. . .	5.00 pm.	Fri.	" 22	" 29	" 6	" 13	" 20	" 27	" 3	" 10	" 17	" 24		
Ar. Gardiner . . .	9.30 am.	Sun.	" 24	July 1	" 8	" 15	" 22	" 29	" 5	" 12	" 19	" 26		
Lv. Cody . . .	8.30 pm.	Thur.	" 28	" 5	" 12	" 19	" 26	Aug. 2	" 9	" 16	" 23	" 30		
Lv. Glacier Pk. .	7.53 pm.	Fri.	" 29	" 6	" 13	" 20	" 27	" 3	" 10	" 17	" 24	" 31		
Lv. Glacier Pk. .	9.40 pm.	Wed.	July 4	" 11	" 18	" 25	Aug. 1	" 8	" 15	" 22	" 29	Sept. 5		
Ar. Minneapl's.	7.00 am.	Fri.	" 6	" 13	" 20	" 27	" 3	" 10	" 17	" 24	" 31	" 7		
Ar. St. Paul . . .	7.30 am.	Fri.	" 6	" 13	" 20	" 27	" 3	" 10	" 17	" 24	" 31	" 7		
Ar. Chicago . . .	7.55 pm.	Fri.	" 6	" 13	" 20	" 27	" 3	" 10	" 17	" 24	" 31	" 7		
Ar. St. Louis . .	7.00 am.	Sat.	" 7	" 14	" 21	" 28	" 4	" 11	" 18	" 25	Sept. 1	" 8		

Three Parks Tour			G-1	G-2	G-3	G-4	G-5	G-6	G-7	G-8	G-9	G-10		
Lv. Chicago . . .	11.30 pm.	Thur.	June 14	June 21	June 28	July 5	July 12	July 19	July 26	Aug. 2	Aug. 9	Aug. 16		
Lv. St. Louis . . .	9.01 pm.	Thur.	" 14	" 21	" 28	" 5	" 12	" 19	" 26	" 3	" 10	" 17		
Lv. Omaha . . .	4.25 pm.	Fri.	" 15	" 22	" 29	" 6	" 13	" 20	" 27	" 4	" 11	" 18		
Ar. Denver . . .	7.15 am.	Sat.	" 16	" 23	" 30	" 7	" 14	" 21	" 28	" 5	" 12	" 19		
Ar. Colo. Sprgs.	7.00 am.	Sun.	" 17	" 24	July 1	" 8	" 15	" 22	" 29	" 6	" 13	" 20		
Ar. Grand Lk. . .	5.00 pm.	Mon.	" 18	" 25	" 2	" 9	" 16	" 23	" 30	" 7	" 14	" 21		
Lv. Loveland . . .	8.13 pm.	Tues.	" 19	" 26	" 3	" 10	" 17	" 24	" 31	" 8	" 15	" 22		
Ar. Gardiner . . .	9.30 am.	Thur.	" 21	" 28	" 5	" 12	" 19	" 26	Aug. 2	" 9	" 16	" 23		
Lv. Cody . . .	8.30 pm.	Mon.	" 25	July 2	" 9	" 16	" 23	" 30	" 6	" 13	" 20	" 27		
Ar. Gr. Falls . . .	1.30 pm.	Tues.	" 26	" 3	" 10	" 17	" 24	" 31	" 7	" 14	" 21	" 28		
Lv. Glacier Pk. .	8.05 am.	Wed.	" 27	" 4	" 11	" 18	" 25	Aug. 1	" 8	" 15	" 22	" 29		
Lv. Glacier Pk. .	9.40 pm.	Sat.	" 30	" 7	" 14	" 21	" 28	" 4	" 11	" 18	" 25	Sept. 1		
Ar. Minneapl's.	7.00 am.	Mon.	July 2	" 9	" 16	" 23	" 30	" 6	" 13	" 20	" 27	" 3		
Ar. St. Paul . . .	7.30 am.	Mon.	" 2	" 9	" 16	" 23	" 30	" 6	" 13	" 20	" 27	" 3		
Ar. Chicago . . .	7.55 pm.	Mon.	" 2	" 9	" 16	" 23	" 30	" 6	" 13	" 20	" 27	" 3		
Ar. St. Louis . .	7.00 am.	Tues.	" 3	" 10	" 17	" 24	" 31	" 7	" 14	" 21	" 28	" 4		

Yellowstone Tour			H-1	H-2	H-3	H-4	H-5	H-6	H-7	H-8	H-9	H-10	H-11		
Lv. St. Louis . . .	2.15 pm.	Sat.	June 16	June 23	June 30	July 7	July 14	July 21	July 28	Aug. 4	Aug. 11	Aug. 18	Aug. 25		
Lv. Chicago . . .	10.35 am.	Sun.	" 17	" 24	July 1	" 8	" 15	" 22	" 29	" 5	" 12	" 19	" 26		
Lv. St. Paul . . .	11.00 pm.	Sun.	" 17	" 24	July 1	" 8	" 15	" 22	" 29	" 5	" 12	" 19	" 26		
Lv. Minneapl's.	11.35 pm.	Sun.	" 17	" 24	July 1	" 8	" 15	" 22	" 29	" 5	" 12	" 19	" 26		
Ar. Gardiner . . .	9.30 am.	Tues.	" 19	" 26	" 3	" 10	" 17	" 24	" 31	" 7	" 14	" 21	" 28		
Ar. Old Faith. . .	12.22 pm.	Wed.	" 20	" 27	" 4	" 11	" 18	" 25	Aug. 1	" 8	" 15	" 22	" 29		
Ar. Lake . . .	5.00 pm.	Thur.	" 21	" 28	" 5	" 12	" 19	" 26	" 2	" 9	" 16	" 23	" 30		
Ar. Canyon . . .	12.00 noon	Fri.	" 22	" 29	" 6	" 13	" 20	" 27	" 3	" 10	" 17	" 24	" 31		
Lv. Cody . . .	8.30 pm.	Sat.	" 23	" 30	" 7	" 14	" 21	" 28	" 4	" 11	" 18	" 25	Sept. 1		
Ar. Minneapl's.	6.45 am.	Mon.	" 25	July 2	" 9	" 16	" 23	" 30	" 6	" 13	" 20	" 27	" 3		
Ar. St. Paul . . .	7.15 am.	Mon.	" 25	" 2	" 9	" 16	" 23	" 30	" 6	" 13	" 20	" 27	" 3		
Ar. Chicago . . .	7.55 pm.	Mon.	" 25	" 2	" 9	" 16	" 23	" 30	" 6	" 13	" 20	" 27	" 3		
Ar. St. Louis . .	7.00 am.	Tues.	" 26	" 3	" 10	" 17	" 24	" 31	" 7	" 14	" 21	" 28	" 4		

Glacier Tour			J-2	J-3	J-4	J-5	J-6	J-7	J-8	J-9	J-10	J-11		
Lv. Chicago . . .	11.00 pm.	Sat.	June 23	June 30	July 7	July 14	July 21	July 28	Aug. 4	Aug. 11	Aug. 18	Aug. 25		
Lv. St. Louis . . .	2.15 pm.	Sat.	" 23	" 30	" 7	" 14	" 21	" 28	" 4	" 11	" 18	" 25		
Lv. St. Paul . . .	11.00 pm.	Sun.	" 24	July 1	" 8	" 15	" 22	" 29	" 5	" 12	" 19	" 26		
Lv. Minneapl's.	11.30 pm.	Sun.	" 24	July 1	" 8	" 15	" 22	" 29	" 5	" 12	" 19	" 26		
Ar. Glacier Pk. .	8.05 am.	Tues.	" 26	" 3	" 10	" 17	" 24	" 31	" 7	" 14	" 21	" 28		
Ar. Many Glac.	11.35 am.	Wed.	" 27	" 4	" 11	" 18	" 25	Aug. 1	" 8	" 15	" 22	" 29		
Lv. Many Glac.	3.00 pm.	Fri.	" 29	" 6	" 13	" 20	" 27	" 3	" 10	" 17	" 24	" 31		
Lv. Go-to-Sun.	2.00 pm.	Sat.	" 30	" 7	" 14	" 21	" 28	" 4	" 11	" 18	" 25	Sept. 1		
Lv. Glacier Pk. .	9.40 pm.	Sat.	" 30	" 7	" 14	" 21	" 28	" 4	" 11	" 18	" 25	" 1		
Ar. Minneapl's.	7.00 am.	Mon.	July 2	" 9	" 16	" 23	" 30	" 6	" 13	" 20	" 27	" 3		
Ar. St. Paul . . .	7.30 am.	Mon.	" 2	" 9	" 16	" 23	" 30	" 6	" 13	" 20	" 27	" 3		
Ar. Chicago . . .	7.55 pm.	Mon.	" 2	" 9	" 16	" 23	" 30	" 6	" 13	" 20	" 27	" 3		
Ar. St. Louis . .	7.00 am.	Tues.	" 3	" 10	" 17	" 24	" 31	" 7	" 14	" 21	" 28	" 4		

Black Hills-Glacier Tour			K-2	K-3	K-4	K-5	K-6	K-7	K-8	K-9	K-10	K-11		
Lv. Chicago . . .	11.30 pm.	Thur.	June 21	June 28	July 5	July 12	July 19	July 26	Aug. 2	Aug. 9	Aug. 16	Aug. 23		
Lv. St. Louis . . .	9.01 pm.	Thur.	" 21	" 28	" 5	" 12	" 19	" 26	" 2	" 9	" 16	" 23		
Ar. Custer . . .	10.20 am.	Sat.	" 23	" 30	" 7	" 14	" 21	" 28	" 4	" 11	" 18	" 25		
Lv. Rapid City .	9.00 am.	Sun.	" 24	July 1	" 8	" 15	" 22	" 29	" 5	" 12	" 19	" 26		
Lv. New Castle .	9.47 am.	Mon.	" 25	" 2	" 9	" 16	" 23	" 30	" 6	" 13	" 20	" 27		
Ar. Gr. Falls . . .	1.30 pm.	Tues.	" 26	" 3	" 10	" 17	" 24	" 31	" 7	" 14	" 21	" 28		
Ar. Glacier Pk. .	8.05 am.	Wed.	" 27	" 4	" 11	" 18	" 25	Aug. 1	" 8	" 15	" 22	" 29		
Lv. Glacier Pk. .	9.40 pm.	Sat.	" 30	" 7	" 14	" 21	" 28	" 4	" 11	" 18	" 25	Sept. 1		
Ar. Minneapl's.	7.00 am.	Mon.	July 2	" 9	" 16	" 23	" 30	" 6	" 13	" 20	" 27	" 3		
Ar. St. Paul . . .	7.30 am.	Mon.	" 2	" 9	" 16	" 23	" 30	" 6	" 13	" 20	" 27	" 3		
Ar. Chicago . . .	7.55 pm.	Mon.	" 2	" 9	" 16	" 23	" 30	" 6	" 13	" 20	" 27	" 3		
Ar. St. Louis . .	7.00 am.	Tues.	" 3	" 10	" 17	" 24	" 31	" 7	" 14	" 21	" 28	" 4		



Calendar Schedule Burlington Escorted Tours

Black Hills-Yellowstone Tour		L-1	L-2	L-3	L-4	L-5	L-6	L-7	L-8	L-9	L-10	L-11
Lv. Chicago...	11.30 pm. Thur.	June 14	June 21	June 28	July 5	July 12	July 19	July 26	Aug. 2	Aug. 9	Aug. 16	Aug. 23
Lv. St. Louis...	9.01 pm. Thur.	" 14	" 21	" 28	" 5	" 12	" 19	" 26	" 2	" 9	" 16	" 23
Lv. Omaha...	4.25 pm. Fri.	" 15	" 22	" 29	" 6	" 13	" 20	" 27	" 3	" 10	" 17	" 24
Ar. Custer...	10.20 am. Sat.	" 16	" 23	" 30	" 7	" 14	" 21	" 28	" 4	" 11	" 18	" 25
Lv. Rapid City...	9.00 am. Sun.	" 17	" 24	July 1	" 8	" 15	" 22	" 29	" 5	" 12	" 19	" 26
Lv. Deadwood...	7.00 am. Mon.	" 18	" 25	" 2	" 9	" 16	" 23	" 30	" 6	" 13	" 20	" 27
Lv. New Castle...	9.47 am. Mon.	" 18	" 25	" 2	" 9	" 16	" 23	" 30	" 6	" 13	" 20	" 27
Ar. Gardiner...	9.30 am. Tues.	" 19	" 26	" 3	" 10	" 17	" 24	" 31	" 7	" 14	" 21	" 28
Lv. Cody...	8.30 pm. Sat.	" 23	" 30	" 7	" 14	" 21	28 Aug. 4	" 5	" 11	" 18	" 25	Sept. 1
Ar. Minneapl's...	6.45 am. Mon.	" 25	July 2	" 9	" 16	" 23	" 30	" 6	" 13	" 20	" 27	" 3
Ar. St. Paul...	7.15 am. Mon.	" 25	" 2	" 9	" 16	" 23	" 30	" 6	" 13	" 20	" 27	" 3
Ar. Chicago...	7.55 pm. Mon.	" 25	" 2	" 9	" 16	" 23	" 30	" 6	" 13	" 20	" 27	" 3
Ar. St. Louis...	7.00 am. Tues.	" 26	" 3	" 10	" 17	" 24	" 31	" 7	" 14	" 21	" 28	" 4

Black Hills-Yellowstone-Colorado Tour		M-1	M-2	M-3	M-4	M-5	M-6	M-7	M-8	M-9	M-10	M-11
Lv. Chicago...	11.30 pm. Thur.	June 14	June 21	June 28	July 5	July 12	July 19	July 26	Aug. 2	Aug. 9	Aug. 16	Aug. 23
Lv. St. Louis...	9.01 pm. Thur.	" 14	" 21	" 28	" 5	" 12	" 19	" 26	" 2	" 9	" 16	" 23
Lv. Omaha...	4.25 pm. Fri.	" 15	" 22	" 29	" 6	" 13	" 20	" 27	" 3	" 10	" 17	" 24
Ar. Custer...	10.20 am. Sat.	" 16	" 23	" 30	" 7	" 14	" 21	" 28	" 4	" 11	" 18	" 25
Lv. Rapid City...	9.00 am. Sun.	" 17	" 24	July 1	" 8	" 15	" 22	" 29	" 5	" 12	" 19	" 26
Lv. New Castle...	9.47 am. Mon.	" 18	" 25	" 2	" 9	" 16	" 23	" 30	" 6	" 13	" 20	" 27
Ar. Gardiner...	9.30 am. Tues.	" 19	" 26	" 3	" 10	" 17	" 24	" 31	" 7	" 14	" 21	" 28
Lv. Cody...	8.30 pm. Sun.	" 24	July 1	" 8	" 15	" 22	29 Aug. 5	" 6	" 13	" 20	26 Sept. 2	" 3
Ar. Estes Pk...	11.00 am. Mon.	" 25	" 2	" 9	" 16	" 23	" 30	" 7	" 14	" 21	" 28	" 4
Ar. Grand Lk...	12.30 pm. Tues.	" 26	" 3	" 10	" 17	" 24	" 31	" 8	" 15	" 22	" 29	" 5
Ar. Denver...	4.00 pm. Wed.	" 27	" 4	" 11	" 18	25 Aug. 1	" 2	" 9	" 16	" 23	" 30	" 6
Ar. Colo Sprgs...	7.00 am. Thur.	" 28	" 5	" 12	" 19	" 26	" 3	" 10	" 17	" 24	" 31	" 7
Ar. Chicago...	7.00 am. Sat.	" 30	" 7	" 14	" 21	" 28	" 4	" 11	" 18	25 Sept. 1	" 8	" 8
Ar. St. Louis...	7.25 am. Sat.	" 30	" 7	" 14	" 21	" 28	" 4	" 11	" 18	" 25	" 1	" 8

MAIL AND TELEGRAMS

Mail and telegrams for members of these parties should be addressed c/o Burlington Escorted Tour (A-5, B-6, S-3, or any other as the case may be) as shown in calendar schedules to the following points:

- | | |
|---|--|
| DENVER, COLO., Albany Hotel | CODY, WYO., Burlington Inn |
| MANITOU, COLO., Cliff House | GLACIER PARK, MONT., Glacier Park Hotel or
Many-Glacier Hotel |
| COLORADO SPRINGS, COLO., Antlers Hotel | BLACK HILLS, S. D., Franklin Hotel, Deadwood |
| ROCKY MT. PARK, COLO., Estes Park Chalets | YELLOWSTONE PARK, WYO. Mail intended to reach passengers upon their entry into Yellowstone should be directed to Mammoth Hot Springs Hotel or Lodge. Mail intended for passengers upon departure from Yellowstone should be addressed c/o Burlington Inn, Cody, Wyo. DO NOT mail to other hotels or lodges. Telegrams sent to Mammoth are forwarded at once to other stop over points. |

ALASKA TOURS, SEATTLE, WASH., c/o G. B. Smith, General Agent Burlington Route, 825 Dexter-Horton Bldg.

YOU will enjoy yourself—*have a good time*—on one of these tours. They represent a sound, sensible travel plan that is not an experiment in any sense. Experienced railroad officials have arranged the details with the co-operation of the Pullman Company, hotel and motor interests, and the National Park Service.

The "escorted tour" idea deserves your consideration in connection with any vacation plan, and especially in case you go alone, these traveling house-parties are ideal, assuring many congenial acquaintances with much in common. You travel without any responsibilities, you see the most, in the best way and with no waste of time.



RESERVATION BLANK

City

Date

Dear Sir:

Parties listed below wish to join Tour _____ at _____

Date _____

Name

Address

City and State

(If more than one passenger, indicate who are to be roomed together and give ages of children, if any.)

Will require Pullman space checked below:

- | | | |
|--------------------------------|---------------------------------------|---------------------------------------|
| <input type="checkbox"/> Lower | <input type="checkbox"/> Two in lower | <input type="checkbox"/> Compartment |
| <input type="checkbox"/> Upper | <input type="checkbox"/> Section | <input type="checkbox"/> Drawing-Room |

In case of Yellowstone Tour specify Hotels Lodges

In case of Tour A specify Regular Glacier Tour Canadian-Glacier Tour

	Seward		Skagway
If Alaska Tour, desire berth on	{	<input type="checkbox"/> Upper Deck	<input type="checkbox"/> "A" Deck
		<input type="checkbox"/> Saloon Deck	<input type="checkbox"/> "B" Deck
			<input type="checkbox"/> "C" Deck

REMARKS: _____

(Sign here) _____

Address _____

Detach and send to any representative shown on back hereof or to J. G. Delaplaine, Manager Burlington Tours, 547 W. Jackson Blvd., Chicago, Ill.

DETACH HERE



“Burlington Tours” Representatives

CITY	ADDRESS	REPRESENTATIVE AND TITLE	RAILROAD
Atchison, Kan.	Second and Main Sts.	B. G. McCarty, Commercial Agent	Burlington
Atlanta, Ga.	516 Healey Bldg.	H. R. Todd, General Agent	Burlington
Boston, Mass.	294 Washington St.	F. F. Johnson, General Agent	Burlington
	80 Boylston St.	J. H. Kenney, New England Pass'r Agent	Great Northern
	236 Old South Bldg.	Jared Jernegan, Trav. Pass'r Agent	Northern Pacific
Buffalo, N. Y.	644 Ellicott Sq.	C. W. Beardell, Trav. Pass'r Agent	Northern Pacific
	683 Ellicott Sq.	Geo Eighmy, Jr., Dist. Pass'r Agent	Great Northern
Burlington, Iowa	Burlington Bldg.	J. J. Teeter, Div. Pass'r Agent	Burlington
Chicago, Ill.	179 W. Jackson St.	(S. J. Owens, Gen'l Agent Pass'r Dept.	Burlington
	73 E. Jackson Blvd.	Emma W. Bock, Chicago Rep.	Burlington Tours
	113 South Clark St.	M. E. Harlan, Gen'l Agent Pass'r Dept.	Northern Pacific
Cincinnati, Ohio	104 W. Fourth St.	E. H. Moot, Gen'l Agent Pass'r Dept.	Great Northern
	609 Traction Bldg.	J. C. Boyer, General Agent	Burlington
	1001 Neave Bldg.	J. H. Brinkman, General Agent	Great Northern
Cleveland, Ohio.	406 Hippodrome Bldg.	W. C. Hartnett, General Agent	Northern Pacific
	806 Hippodrome Bldg.	E. H. Smith, General Agent	Burlington
	507 Hippodrome Bldg.	Willard Adamson, General Agent	Northern Pacific
Clinton, Iowa	404 Wilson Bldg.	F. L. Cobb, District Pass'r Agent	Great Northern
Council Bluffs, Iowa	25 Pearl St.	W. A. Carlson, Commercial Agent	Burlington
Dallas, Texas	701 Kirby Bldg.	J. E. Swan, Commercial Agent	Burlington
	1013 Southwestern Life Bldg.	C. W. Andrews, General Agent	Burlington
	903 Southwestern Life Bldg.	I. H. Turner, Southwestern Agent	Great Northern
Davenport, Iowa	Front and Harrison Sts.	Chas. Sorg, Jr., Southwestern Agent	Northern Pacific
Des Moines, Iowa	206 Equitable Bldg.	M. H. Teed, Pass'r Agent	Burlington
	216 Equitable Bldg.	A. M. Hixson, Commercial Agent	Burlington
	305 Equitable Bldg.	R. H. McCurdy, Trav. Pass'r Agent	Northern Pacific
Detroit, Mich.	708 Transportation Bldg.	W. M. Romine, District Pass'r Agent	Great Northern
	Lobby, Transportation Bldg.	F. L. Gannaway, General Agent	Burlington
	1006 Transportation Bldg.	E. B. Clark, General Agent	Great Northern
Duluth, Minn.	422 W. Superior St.	Geo. Barnes, General Agent	Northern Pacific
	334 W. Superior St.	C. M. Cornelius, Dist. Pass'r Agent	Great Northern
Galesburg, Ill.	Burlington Station	J. I. Thomas, Dist. Pass'r Agent	Northern Pacific
Hannibal, Mo.	208 S. Main St.	C. I. Twyman, Div. Pass'r Agent	Burlington
Indianapolis, Ind.	910 Merchants Bank Bldg.	Paul Anderson, Div. Pass'r Agent	Burlington
Jacksonville, Fla.	510 Graham Bldg.	O. G. Hagemann, General Agent	Burlington
Kansas City, Mo.	Seventh and Walnut Sts.	T. H. Harrison, District Pass'r Agent	Burlington
	115 Railway Exchange	H. S. Jones, Gen'l Agent Pass'r Dept.	Burlington
	516 Railway Exchange	F. A. Acker, General Agent	Northern Pacific
Keokuk, Iowa	Fifth and Johnson Sts.	V. E. Jones, Gen'l Agent Pass'r Dept.	Great Northern
Leavenworth, Kan.	Fifth and Choctaw Sts.	A. C. Maxwell, Div. Pass'r Agent	Burlington
Lincoln, Neb.	142 So. Thirteenth St.	S. E. Nirdlinger, Commercial Agent	Burlington
Milwaukee, Wis.	221 Wisconsin Ave.	H. P. Kauffman, City Pass'r Agent	Burlington
	1126 First Wis. Nat'l Bk. Bldg.	F. D. Hunter, General Agent	Burlington
	812 Majestic Bldg.	R. L. Kelly, General Agent	Northern Pacific
Minneapolis, Minn.	50 S. Sixth St.	E. A. Fradenburgh, General Agent	Great Northern
	522 Second Ave., South	J. E. Lynn, Gen'l Agent, Pass'r Dept.	Burlington
	524 Second Ave., South	G. F. McNeill, Ass't Gen'l Pass'r Agent	Northern Pacific
New Orleans, La.	708 Common St.	R. C. Michkils, Gen'l Agent Pass'r Dept.	Great Northern
New York City	280 Broadway	G. B. Magruder, General Agent	Burlington
	560 Fifth Ave.	W. S. Dewey, General Agent	Burlington
	595 Fifth Ave.	H. M. Fletcher, Ass't Gen'l Pass'r Agent	Northern Pacific
Omaha, Neb.	300 S. Sixteenth St.	M. M. Hubbert, Gen'l Eastern Pass'r Agent	Great Northern
Peoria, Ill.	230 S. Jefferson Ave.	J. W. Sharpe, Gen'l Agent Pass'r Dept.	Burlington
Philadelphia, Pa.	1428 Penn Sq. (Finance Bldg.)	H. D. Paze, General Agent	Burlington
	504 Finance Bldg.	E. H. Whitlock, District Pass'r Agent	Burlington
	809 Finance Bldg.	B. M. Decker, General Agent	Great Northern
Pittsburgh, Pa.	605 Park Bldg.	B. M. Decker, General Agent	Northern Pacific
	518 Park Bldg.	W. V. Taffner, General Agent	Burlington
	206 Oliver Bldg.	W. H. Millard, General Agent	Northern Pacific
	513 Hampshire St.	P. H. Yorke, General Agent	Great Northern
Quincy, Ill.	110 S. Fifth St.	B. R. Newlon, Div. Pass'r Agent	Burlington
St. Joseph, Mo.	416 Locust St.	J. D. Baker, Div. Pass'r Agent	Burlington
St. Louis, Mo.	517 Boatmen's Bank Bldg.	C. B. Ogle, Gen'l Agent Pass'r Dept.	Burlington
	540 Boatmen's Bank Bldg.	J. M. Sanford, General Agent	Great Northern
	226 Railroad Bldg.	R. K. Cross, General Agent	Northern Pacific
St. Paul, Minn.	Railroad Bldg.	B. W. Wilson, Dist. Pass'r Dept.	Burlington
	4th and Jackson Sts.	M. R. Johnson, City Pass'r Agent	Northern Pacific
Sioux City, Iowa	516 Nebraska St.	A. L. Johnson, City Pass'r Agent	Great Northern
Toronto, Ont.	507 Royal Bank Bldg.	P. J. Donohue, General Agent	Great Northern—Burlington
		H. E. Watkins, General Agent	Great Northern

J. G. DELAPLAINE,

[Manager Burlington Escorted Tours

547 W. Jackson Blvd., Chicago, Illinois

