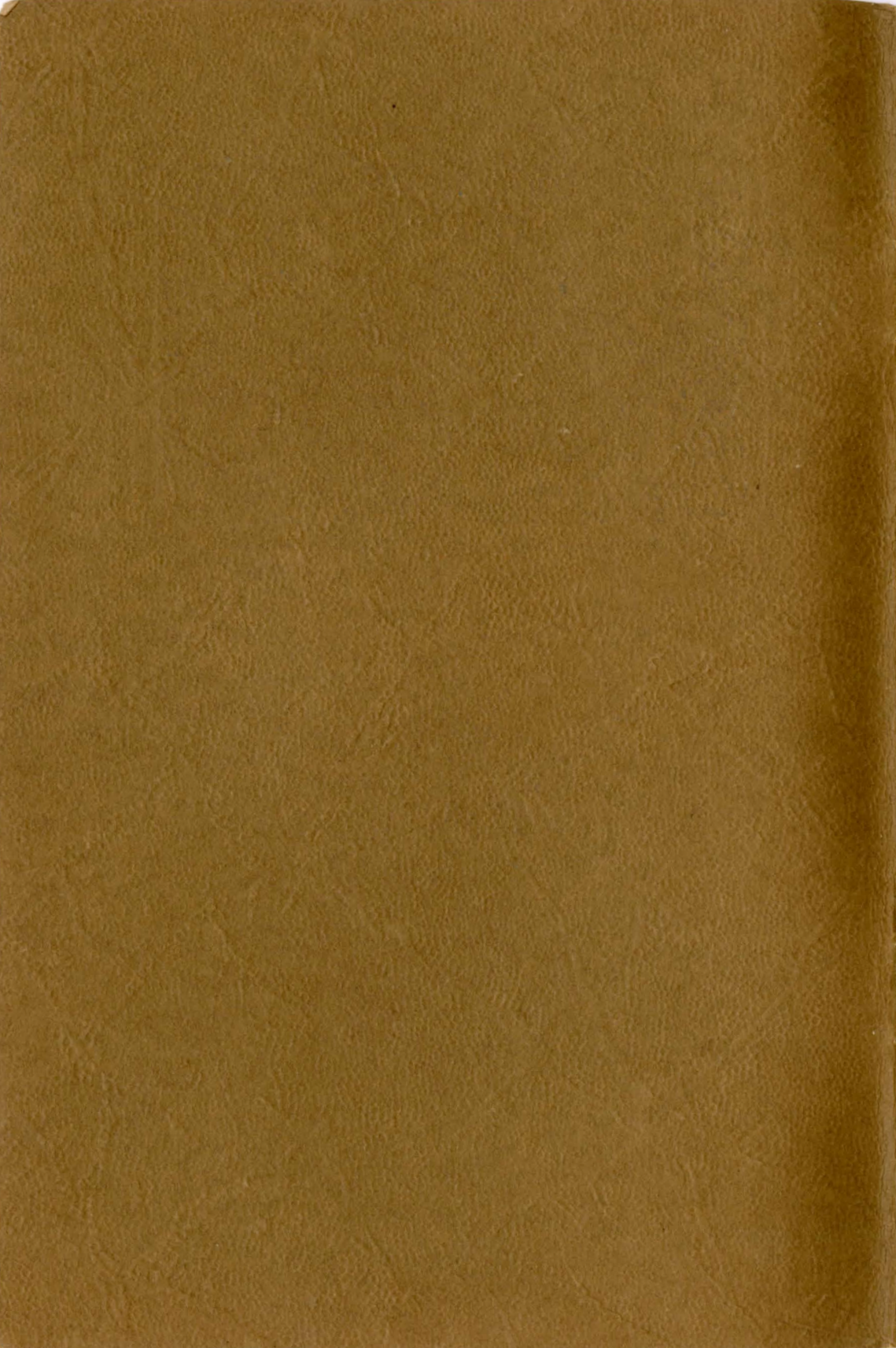





Glacier
Yellowstone
Rocky Mountain
National Parks
Colorado



Vacations without a Care



TO
GLACIER
YELLOWSTONE
ROCKY MOUNTAIN
NATIONAL PARKS


COLORADO

1926



Big Thompson Canyon
Rocky Mountain National Park



VACATIONS WITHOUT A CARE

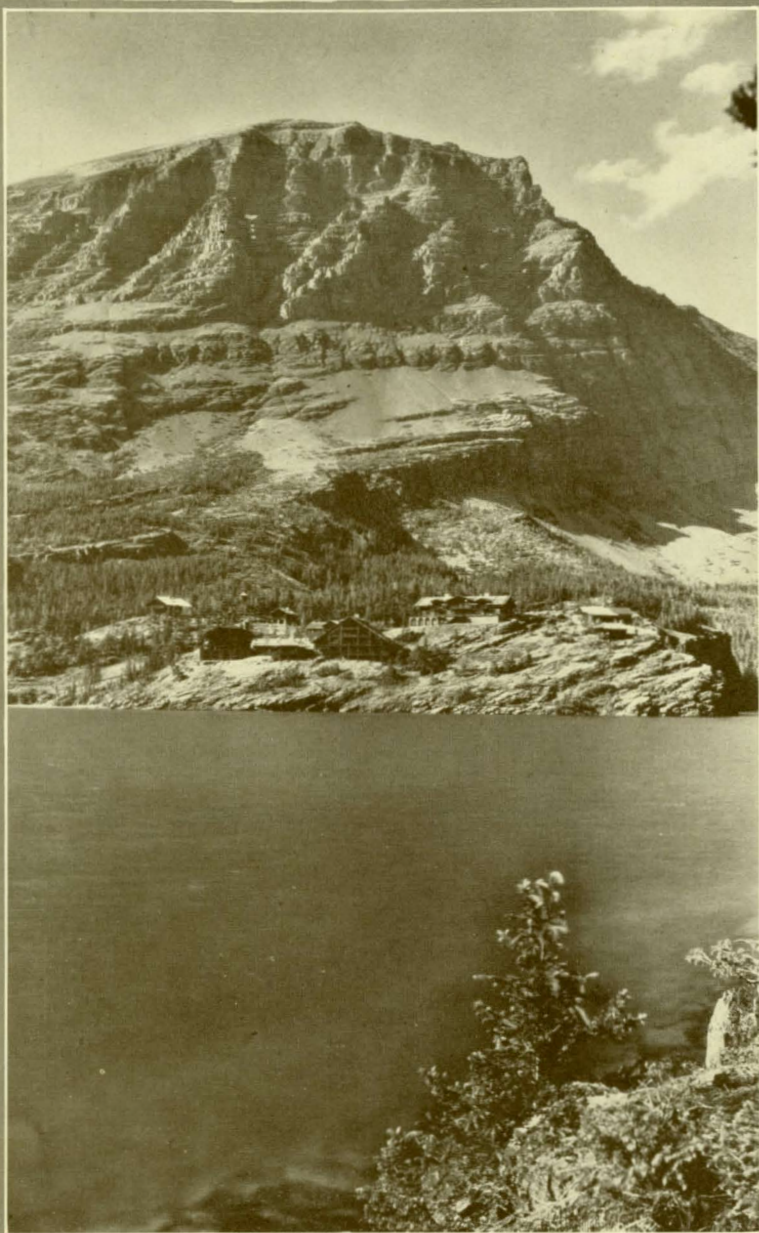
THE National Parks of the Scenic Rockies each successive year are making a more vibrant appeal to tourists and vacation travelers. Each of these National Parks—Yellowstone in Wyoming, Glacier in Montana, Rocky Mountain (Estes) in Colorado—utterly different, one from the other, are visited during the summer by thousands of Americans who want to see and comprehend the big West—its rich agricultural areas, its vast industrial resources, its varied landscape, its splendid modern cities and above all the scenic wealth of the Rockies with their majestic skylines and masses of the Continental Divide stretching from Pikes Peak in Colorado, through these three National Parks to the International Boundary beyond Glacier.

Glacier, Yellowstone and Rocky Mountain (Estes) are the three brilliant display regions of the great Rocky Range. They are the triple lure for a half million summer sight-seers.

The year 1925 witnessed the inception of "Burlington Escorted Tours." These were summer vacation tours leaving Chicago and St. Louis twice a week making comprehensive circuits embracing combinations of America's great National Parks of the Rocky Mountains; following a definite schedule all the way through, with a completely prearranged program carefully planned—all at a given price known beforehand, including railroad fare, Pullman and automobile transportation, lodging, meals in dining cars and at hotels, sight-seeing, complete National Park Tours—in fact all items of necessary expense, leaving the way clear to a carefree, wholly enjoyable vacation experience *sans* worry, bother, travel detail, tickets to fuss with, time tables to read, baggage to check, plans to make. In charge of each tour was an experienced railroad representative who made the entire trip and whose duty it was to look after all these things.

The success of the "Tours" last year was so marked—so far beyond expectations, that the sponsoring railroads have been encouraged to operate twice as many for 1926—and so instead of two tours per week, this Summer there will be four per week and sometimes five.

In computing the over-all charge for these tours, only the actual costs are taken as factors. Nothing is added for overhead nor for the services of the escort in charge, so that the cost may fairly be regarded as the lowest possible figure consistent with strictly first-



*Going-to-the-Sun Chalets
on St. Mary Lake
Glacier National Park*
COPYRIGHT BY HILEMAN



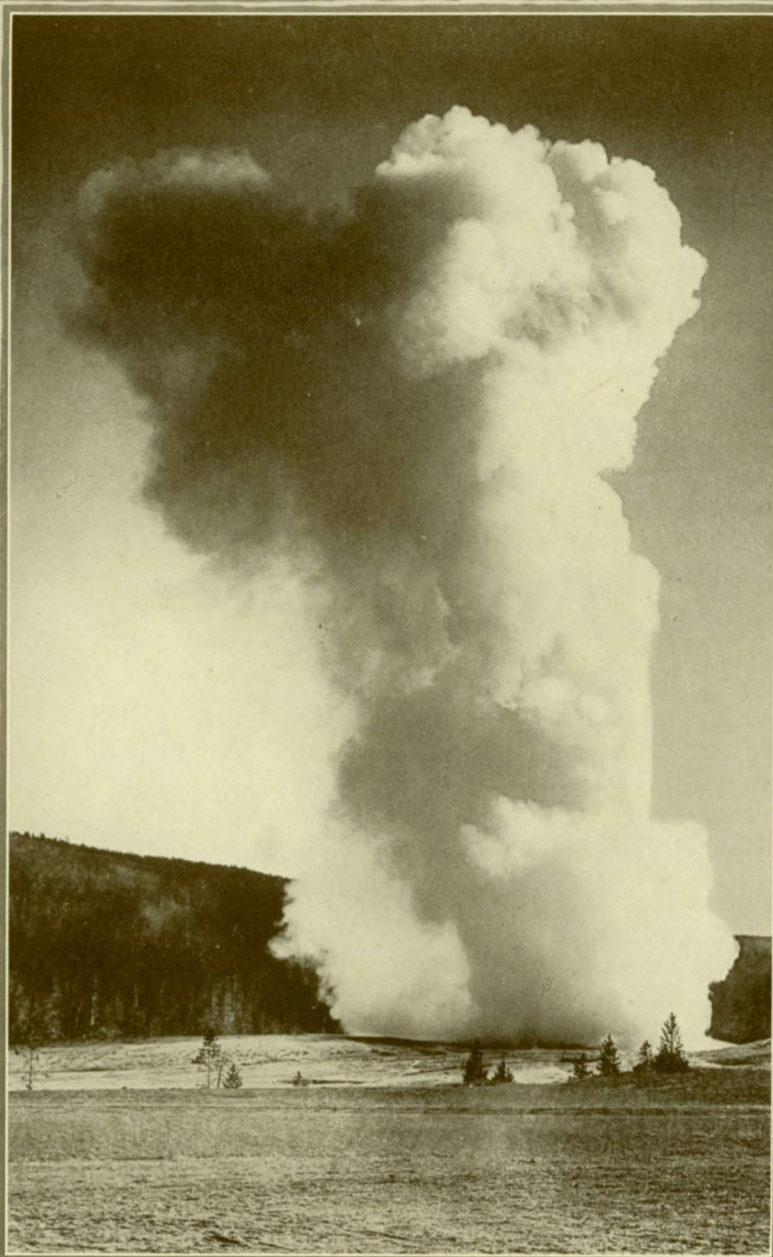
class service throughout and with a vacation plan embracing the most attractive features which it is possible to manage in the time allowed.

It is axiomatic that the most successful business enterprises are those which are the best planned and this is usually just as true as to vacations. But too often busy business men and women do not have the time to prepare vacation plans with the same care, judgment and perception which characterizes the conduct of their business affairs. Others may not fully appreciate the value, not to say the necessity, of a thoroughly planned trip. To still others a vacation comes at an unexpected time, leaving little opportunity to make adequate arrangements. And finally, there are a good many who, because of a certain degree of timidity about asking questions or traveling alone, spend their vacation close to home without coming anywhere near to realizing the maximum of rest, recreation and enjoyment possible to a vacation.

The number of people who fall into one or the other of these classifications—folks who fail to make the best use of their vacation time because they miss a lot they didn't know was there, or who spend more time and money than is really necessary, or who for one reason or another forego a trip in favor of a stay-at-home vacation—runs into many thousands, and to these especially we believe Burlington Escorted Tours will come as a friendly aid in the happy solution of the vacation problem.

We do not mean to imply that you cannot, with your family or friends, "go it alone" and have a fine time. You can, of course. Nor do we intend that the operation of these tours shall in any way supplant or change the familiar structure of through-route train service commonly afforded by these railroads. On the contrary, we wish to make it clear that the tours rather represent a new and efficient travel service quite in addition thereto.

What we do hope and believe is that the idea of a comprehensive vacation trip, planned by railroad organizations thoroughly familiar with the regions to be visited—a trip embracing the features you'd naturally want to see and omitting the commonplace and the duplications—a tour, in short, in which every hour is employed to the best advantage, and all at a cost known beforehand—should make a strong appeal to people to whom a vacation comes but once a year, and when it does come is limited to two fleeting weeks.



*Nature's Timepiece—
Old Faithful Geyser
Yellowstone National Park*

COPYRIGHT BY HAYNES



Burlington Escorted Tours of the National Parks and Colorado

TOUR "A" OF GLACIER AND YELLOWSTONE NATIONAL PARKS

Along the upper Mississippi, touring St. Paul-Minneapolis, through the zone of the Great Northern Railway. Four days in Glacier—the magnificent and multi-colored; four and one-half days among Yellowstone's wonders set within a landscape of surpassing charm. Exit, the Cody Scenic Road through Shoshone Canyon and homeward over the Northern Pacific-Burlington.

From Chicago and St. Louis every Saturday. Itinerary page 8.

TOUR "B" OF COLORADO AND YELLOWSTONE NATIONAL PARK

Through a thousand miles of the world's richest agriculture; touring Denver, Colorado Springs, the slope of Pikes Peak, and Rocky Mountain National Park over the Continental Divide. By rail across our last frontier, with its seven hundred miles of mountain panorama to Yellowstone. Four and one-half days in the land of geysers and surprises; out over the spectacular Cody Road and homeward over the Northern Pacific-Burlington. A 3,800-mile circuit of the West and Northwest.

From Chicago and St. Louis every Thursday. Itinerary page 14.

TOUR "C" OF YELLOWSTONE AND GLACIER NATIONAL PARKS

Along the upper Mississippi, touring St. Paul-Minneapolis and environs; through the Northwest wheat areas and the old Indian warfare region of the Yellowstone River, via the Northern Pacific to the Cody Scenic Entrance; entering Yellowstone over its eastern wall, the Absarokas, going directly to the masterpiece of nature—the Falls and Canyon of the Yellowstone: From the Park to the locale at Helena, Montana, of the Lewis and Clark Expedition: Four days among Glacier's bewildering and glorious ensemble; homeward over the Great Northern-Burlington.

From Chicago and St. Louis every Tuesday. Itinerary page 18.

TOUR "D" OF YELLOWSTONE NATIONAL PARK AND COLORADO

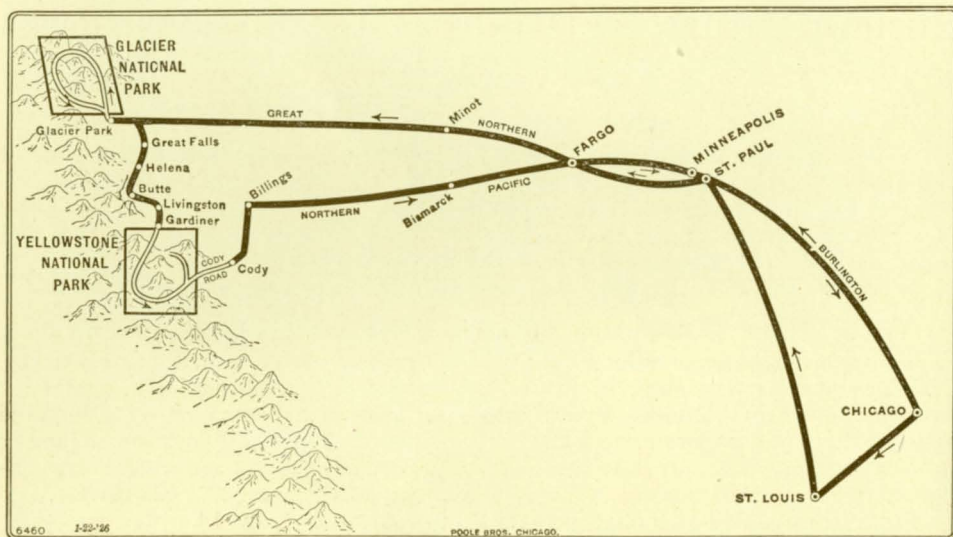
By daylight over the Burlington for three hundred miles along the majestic Mississippi, through the Northwest direct to the Gardiner Entrance of Yellowstone; the complete Park tour and out over the Cody Scenic Road through the Buffalo Bill Country—the land of the Shoshones, by the great Government Dam: Following southward the Rockies, the Big Horn, Owl Creek and Casper ranges, along the East Slope, through Rocky Mountain National Park and over the Continental Divide; touring the Denver, Colorado Springs and Pikes Peak regions; homeward through a thousand miles of corn and wheat—our country's bread basket.

From Chicago every Sunday, from St. Louis Saturdays. Itinerary page 22.

TOUR "E" OF COLORADO AND SALT LAKE

Through the Middle West to Colorado Springs, Manitou and the summit of Pikes Peak, with its hundred-mile radii of outlook; traversing the trans-continental scenic zone of the Rio Grande Railway over Marshall Pass through the Black Canyon, the Wasatch Valley to Salt Lake; returning over the west slope of the Rockies through Tennessee Pass, over the Divide, through the Royal Gorge; touring Denver and Rocky Mountain Park, again crossing the Continental Divide, America's biggest topographical unit.

From Chicago and St. Louis Saturday. Itinerary page 26.



Glacier and Yellowstone—Tour “A”

Complete Schedule and Itinerary

SATURDAY—Leave Chicago from the new Union Station at 11.00 p.m., via Burlington Route, or leave St. Louis 2.15 p.m., via Burlington Route.

SUNDAY—The St. Louis party arrives St. Paul at 8.35 a.m.; the Chicago party arrives St. Paul 11.00 a.m. Early risers will awake to find the train following the picturesque Wisconsin shore of the upper Mississippi River through a region of rare charm. Luncheon and dinner at the St. Paul Hotel. Afternoon motor tour among points of scenic and historic interest in St. Paul, Minneapolis, and their environs. Leave St. Paul 10.45 p.m., via Great Northern.

MONDAY—En route through the vast wheat belt of Minnesota and North Dakota and the Milk River Valley of northern Montana.

TUESDAY—Arrive Glacier Park 8.05 a.m.; breakfast at Glacier Park Hotel. Morning trip to the Blackfeet Indian Camp and afternoon motor trip to the Two Medicine Valley and return, including a ride on beautiful Two Medicine Lake surrounded by majestic mountain peaks, and an hour's walking expedition to Twin Falls. Dancing and other entertainment in the evening at Glacier Park Hotel.

WEDNESDAY—Morning motor trip to Many-Glacier Hotel. Afternoon boat trip across Lake McDermott and to the head of Josephine Lake, for view of Grinnell Glacier. Dancing here.

THURSDAY—Morning hike up Mt. Altyn for view of alpine district. Morning horse-back trip to Iceberg Lake can be made at small extra expense. Leave Many-Glacier 4.00 p.m., by motor, for St. Mary Chalet, where party will remain over night.

FRIDAY—Leave St. Mary Chalet 9.00 a.m. by boat for Going-to-the-Sun. Hiking trip to Baring Falls and Janet Gorge. A most attractive mountain view is had from this point. Leave 4.00 p.m. by boat and motor, arrive Glacier Park Hotel 7.00 p.m. Leave Glacier Park 11.59 p.m., via Great Northern.



SATURDAY—Arrive Great Falls 7.00 a.m. where we spend the morning. Breakfast and luncheon at Park Hotel, with auto trip to the Falls of the Missouri and Anaconda Wire Mills. Leave Great Falls 1.20 p.m., via the Montana Rockies. Prickly Pear and Missouri River Canyons and Helena—the capital of the great mining state, to Butte.

SUNDAY—Breakfast Livingston. Arrive Gardiner, the entrance to *Wonderland*, 11.15 a.m., via Northern Pacific, and motor along the Gardiner River to Mammoth Hot Springs for luncheon. Afternoon walk over the remarkable hot springs terraces and to see Liberty Cap, the Devil's Kitchen, and a score of other strange sights peculiar to this region.

MONDAY—Via the Golden Gate, Apollinaris Spring, Obsidian Cliff, Roaring Mountain, Norris Geyser Basin, Gibbon Canyon, Mammoth Paint Pots, Lower and Upper Geyser Basins to Old Faithful. Within easy walking distance of the Inn or Lodges is the greatest aggregation of geysers in the world, together with hundreds of other queer and unheard-of hot water phenomena. We stay here 24 hours.

TUESDAY—Via Kepler Cascade, twice across the Continental Divide to the "thumb" of the lake, with a stop to view the famous boiling water fishing cone which rises out of the icy water of the lake. Proceeding thence along the wooded lake shore to the Lake. Plenty of bears hereabout.

WEDNESDAY—Along the Yellowstone River, through beautiful Hayden Valley, with a brief stop to see the Mud Volcano; hotel party crosses the river at the Upper Falls, and lodges party goes via Inspiration Point for a first inspiring view of the wonderful painted canyon of the Yellowstone and the Great Fall. Side trip to Dunraven Pass, arriving Grand Canyon 12.00 noon.

THURSDAY—Over the famous 90-mile Cody Road, through the Buffalo Bill country—Sylvan Pass, Lake Eleanor, Shoshone National Forest, the dude ranch region, with a stop at Shoshone Dam, and as a fitting climax to a wonderful tour, the six-mile gorge of the Shoshone River. Luncheon en route at Sylvan Pass Lodge and dinner at the Burlington Inn at Cody. Leave Cody 8.30 p.m., via Burlington Route.

FRIDAY—En route on the Northern Pacific, through the Indian country of eastern Montana, the Bad Lands, and the great stock and grain sections of North Dakota and Minnesota.

SATURDAY—Arrive St. Paul 7.15 a.m. Daylight ride along the Wisconsin shore of Lake Pepin and the Mississippi River. Arrive Chicago 7.55 p.m. Passengers for St. Louis leave Chicago 9.00 p.m., arriving St. Louis 7.00 a.m. Sunday.

Through Glacier and Yellowstone—Pullman, Meals, Lodging, Motor Trips—All Necessary Expenses

COST OF COMPLETE TOURS		FROM CHICAGO		FROM ST. LOUIS	
		<i>Without</i> Railroad Ticket	<i>With</i> Railroad Ticket	<i>Without</i> Railroad Ticket	<i>With</i> Railroad Ticket
1 person to a lower berth.....	Hotels Thru Yellowstone	\$160.80	\$226.45	\$166.93	\$235.23
2 persons to a lower berth.....		141.05 each	206.70 each	144.99 each	213.29 each
1 person to an upper berth.....		152.90	218.55	158.15	226.45
1 person to a lower berth.....	Lodges Thru Yellowstone	\$151.80	\$217.45	\$157.93	\$226.23
2 persons to a lower berth.....		132.05 each	197.70 each	135.99 each	204.29 each
1 person to an upper berth.....		143.90	209.55	149.15	217.45



*Grand Canyon and Great Fall
of the Yellowstone*

COPYRIGHT BY GIFFORD



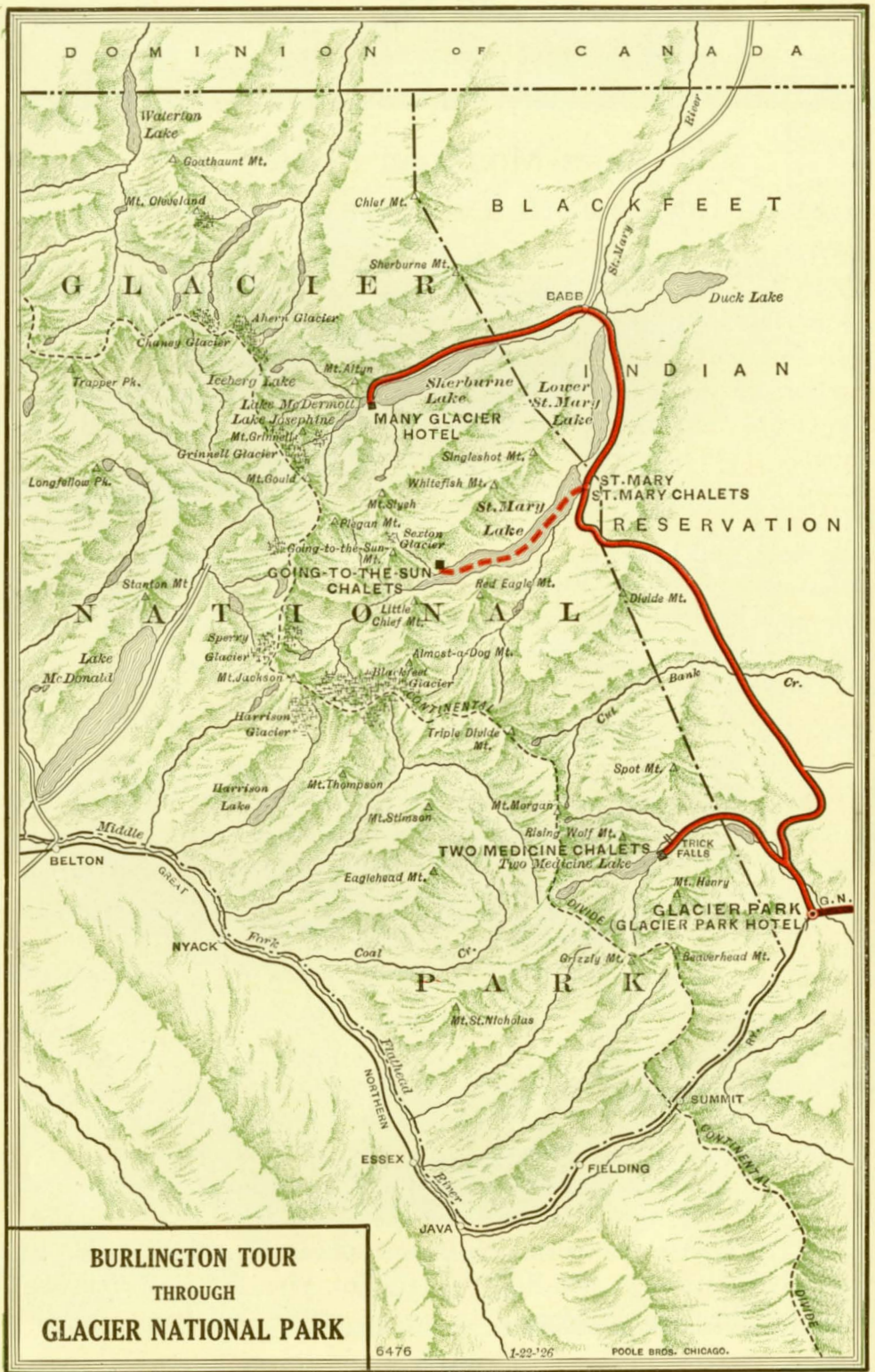
Inter-Mountain Route From Colorado to Yellowstone and Glacier

THE advantageous combination of scenic Colorado with the northern National Parks is made possible only through the utility of the Burlington's inter-mountain line stretching from Denver through Wyoming and Montana. This route traverses the last zone of American frontier life—a domain of vast plains and foothills flanked by mountain chains through its sweeping length. These are the last fighting grounds of the Indians. Along this frontier the West was finally won. Across this frontier lies the route through central Wyoming of the De Bonneville Expedition of the '30's to the Columbia River. Bonneville Station identifies the route and marks the eastern entrance to the majestic canyon of the Wind River. Through the Big Horn Basin the railroad follows the Big Horn River, which carried by night through this land of the Crows, canoes made of buffalo hide laden with furs and carrying two members of the De Bonneville party homeward, via the Yellowstone and Missouri rivers to St. Louis.

Across Wyoming, along the Platte River route of the Burlington, lies the old Mormon Trail to Salt Lake and the Oregon Trail to the Columbia River—two historic and adventurously traveled covered-wagon routes through the old West leading to an uncertain destiny.

After the Indians came the great cattle herds, the flocks of countless sheep, the sway of the cattle kings over all out-of-doors when the cowpuncher rode the range in the round-up of ten thousand cattle. 'Tis the land where Remington and Russell found their types.

From the Yellowstone to the International Boundary rode the ranchman, Theodore Roosevelt. The Missouri River through Montana is the historic waterway of the Lewis and Clark expedition. The Wind River and Owl Creek Mountains of western Wyoming are identified by old ranchmen as the locale of *The Virginian*—Wister's characteristic and faithful portrayal of the ranch life of the frontier. Along the west slope of the Big Horns, Owen Wister recreates. In these same forests Buffalo Bill (the late Col. Wm. F. Cody) found an outlet for the ruling passion of his life.



**BURLINGTON TOUR
THROUGH
GLACIER NATIONAL PARK**

6476

1-22-26

POOLE BROS. CHICAGO.



Glacier National Park

PEOPLE go back to Glacier Park. The "land of shining mountains" finds them unprepared for the mighty array of sheer, rugged beauty created by a prehistoric upheaval which literally piled mountain upon mountain.

Scientists tell us that countless centuries ago a great subterranean disturbance caused the earth's surface to give way here, forming a great jagged crack many miles long. In the readjustment which followed one edge or lip of the great cleft was thrust over and across the other—a phenomena unique in North America and perhaps in the world—now called by geologists the "Lewis Overthrust."

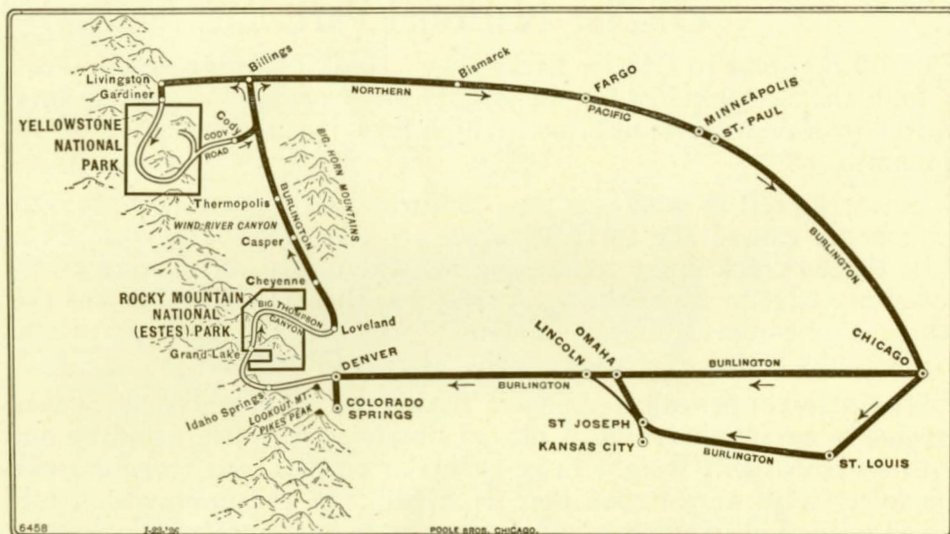
The glacial age followed, when the whole of North America was covered by an ice sheet which moved slowly southward, grinding out with its irresistible weight huge basins or cirques, and tearing away the softer substrata of rock here exposed. The centuries which followed witnessed the melting of the ice sheets and revealed the mighty peaks which withstood the glaciers' terrific grinding force and now rear their proud heads in Glacier National Park—unconquered and unconquerable—the wildest and most colossal confusion of mountain grandeur on the continent.

Did I say the ice sheet melted away? Not entirely. Some sixty living glaciers—remnants of the vast ice fields which once covered the whole of the Northwest yet remain in Glacier Park and bid fair to stay, gaining in the winters' snows what they lose during the summer in the way of countless streams of icy water which have their source in these glaciers and go catapulting from ledge to ledge down the mountain sides to turn crystal blue as they run through the pine forest to join other streams and flow on—some to the Pacific Ocean, some to the Gulf of Mexico, others to the Arctic Ocean through Hudson Bay. (See article about the Triple Divide in Glacier Park Booklet.)

Mary Roberts Rinehart has said of Glacier Park—

"If you are normal and philosophical, if you love your country, if you are willing to learn how little you count in the eternal scheme of things, go ride in the Rocky Mountains and save your soul."

Here the call of the mountains is a real call. To this domain where the Blackfeet Indians make their medicine in the shadow of Going-to-the-Sun, just as the Blackfeet have done since time immemorial—to this "land of shining mountains" you will go some day and then go again and again.



Colorado and Yellowstone Tour "B"

Complete Schedule and Itinerary

THURSDAY—Leave Chicago from the new Union Station at 11.30 p.m., via Burlington Route, or leave St. Louis 9.01 p.m., via Burlington Route.

FRIDAY—Chicago party is en route through Iowa, crossing the Missouri River at Omaha. St. Louis party arrives Omaha 11.50 a.m. Luncheon Fontanelle Hotel with auto ride, joining the Chicago party, leaving Omaha 4.25 p.m.

SATURDAY—Arrive Denver 7.15 a.m. Motor to Albany Hotel for breakfast and luncheon. Afternoon auto tour around Denver and up Bear Creek Canyon to Denver Motor Club for picnic dinner. Leave Denver 11.00 p.m., via Colorado & Southern Ry.

SUNDAY—Arrive Colorado Springs 1.32 a.m., remaining in special sleeping cars until 7.00 a.m. Breakfast at the Cliff House, Manitou. Morning trip to summit of Pikes Peak and return. Luncheon at the Cliff House, after which a motor trip embracing the Garden of the Gods, Williams Canyon, Cave of the Winds, Seven Falls and South Cheyenne Canyon. Dinner at the Antlers Hotel, Colorado Springs.

MONDAY—Leave Colorado Springs 4.25 a.m., via C. & S. Ry. (sleepers open for occupancy 10.00 p.m. Sunday). Arrive Denver 7.00 a.m. Motor via Golden and Lariat Trail to summit of Lookout Mountain. Brief stop at the grave of Col. Wm. F. Cody (Buffalo Bill) thence via Denver's Mountain Parks, and through Clear Creek Canyon to Idaho Hot Springs for luncheon, after which motor again over the Continental Divide at Berthoud Pass, past the mouth of the great Moffat tunnel to Grand Lake Lodge for dinner and lodging.

TUESDAY—Motor over the Continental Divide at Milner Pass and over the Fall River Road to Estes Park Chalets for luncheon and the afternoon. Motor via Estes



Park and through the twenty-two mile canyon of the Big Thompson to Loveland for dinner at Lovelander Hotel. Leave at 8.21 p.m., via Burlington (C. & S.).

WEDNESDAY—En route via the Casper oil fields, Thermopolis and Wind River Canyon—the Big Horn Range to the east—the Rockies to the west.

THURSDAY—Breakfast Livingston. Arrive Gardiner 11.15 a.m. and transfer to motors for Mammoth Hot Springs, arriving there 12.00 noon. Afternoon walking tour over the great Hot Springs Terrace formation.

FRIDAY—En route via the Golden Gate, Swan Lake, Apollinaris Spring, Obsidian Cliff, Roaring Mountain, Norris Geyser Basin, Gibbon Canyon and Falls, Mammoth Paint Pots and Lower Geyser Basin to Old Faithful. Twenty-four hours amid the greatest aggregation of geysers in all the world. There are literally scores of them—large and small—of every shape and description—some quiescent, others shooting columns of boiling water and steam high in the air. Some erupt incessantly, others play anywhere from a few minutes to a few hours. Old Faithful Geyser hurls a tremendous volume of water 150 feet into the air every sixty-five minutes. Plans allow ample time for both afternoon and morning tours over the entire Geyser Basin, plus an evening with the bears.

SATURDAY—Via Kepler Cascades, twice across the Continental Divide to Yellowstone Lake, with a brief stop to see the famous Fishing Cone, thence along the wooded shore of this second highest body of water in the world. A pleasant evening at this beautiful place on the shore of Yellowstone Lake. A good place to go fishing.

SUNDAY—Along the Yellowstone River, through beautiful Hayden Valley, stopping at the Mud Volcano; hotel party crosses the river at the Upper Falls and lodges party goes via Inspiration Point for a first inspiring view of the wonderful painted canyon of the Yellowstone and the majestic Lower Fall. Side trip to Dunraven Pass, arriving Grand Canyon 12.00 noon.

MONDAY—Along the Yellowstone River and over the Cody Road—famous ninety-mile scenic highway through the Buffalo Bill country. En route Sylvan Pass, Lake Eleanor, Shoshone National Forest, Wyoming "dude" ranch region, with a stop at the Shoshone Irrigation Dam, and as a grand climax—the wonderful six-mile Shoshone Canyon. Luncheon en route at Sylvan Pass Lodge and dinner at the Burlington Route Inn. Leave Cody 8.30 p.m., via Burlington Route.

TUESDAY—En route on the Northern Pacific, through the Indian country of eastern Montana, the Bad Lands, and the vast stock and grain sections of North Dakota and Minnesota.

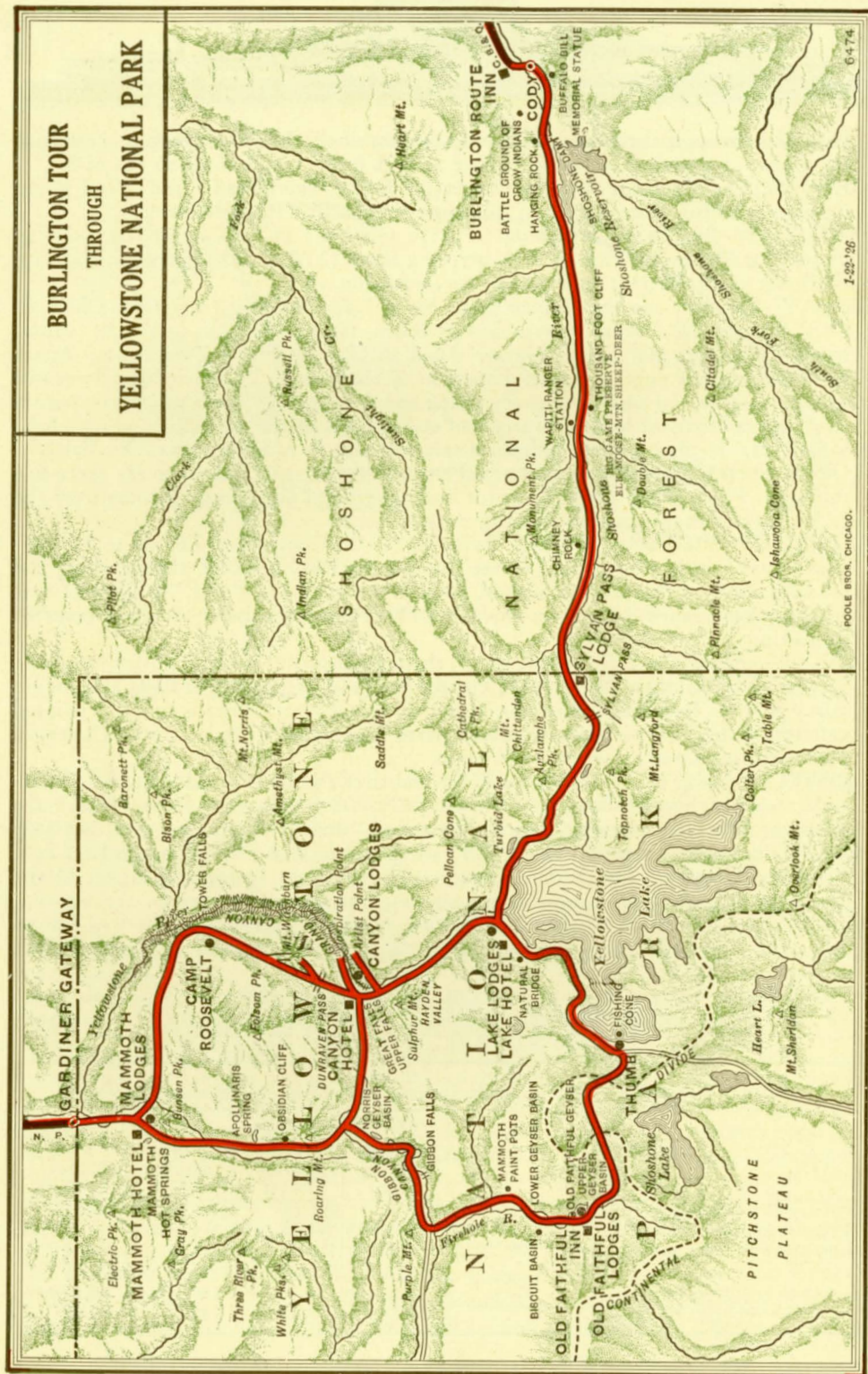
WEDNESDAY—Arrive St. Paul 7.15 a.m. Daylight ride along the Wisconsin shore of Lake Pepin and the Mississippi River. Arrive Chicago 7.55 p.m. Passengers for St. Louis leave Chicago 9.00 p.m., arriving St. Louis 7.00 a.m. Thursday.

Through Yellowstone—Pullman, Meals, Lodging, Motor Trips—All Necessary Expenses

COST OF COMPLETE TOURS		FROM CHICAGO		FROM ST. LOUIS	
		<i>Without Railroad Ticket</i>	<i>With Railroad Ticket</i>	<i>Without Railroad Ticket</i>	<i>With Railroad Ticket</i>
1 person to a lower berth.....	Hotels Thru Yellowstone	\$162.26	\$221.61	\$166.76	\$228.71
2 persons to a lower berth.....		142.51 each	201.86 each	145.51 each	207.46 each
1 person to an upper berth.....		154.35	213.70	158.25	220.20
1 person to a lower berth.....	Lodges Thru Yellowstone	\$153.26	\$212.61	\$157.76	\$219.71
2 persons to a lower berth.....		133.51 each	192.86 each	136.51 each	198.46 each
1 person to an upper berth.....		145.35	204.70	149.25	211.20

BURLINGTON TOUR THROUGH

YELLOWSTONE NATIONAL PARK





Yellowstone National Park

WHO needs to be told about Yellowstone? Who is there in this or any other civilized land to whom the very name does not conjure up a picture of a magic land where the steam pressure of underground water heated to a super-boiling point has rent the earth's surface to send skyward great hissing columns of boiling water shot with live steam?

These are the geysers of Yellowstone—the earth's safety valves. They are of all sorts of shapes and descriptions. Some erupt constantly; others are quiescent for periods ranging from a few minutes to several days or longer. One—the famous "Old Faithful"—hurls water and steam straight upward 150 feet every sixty-five minutes, day in and day out, winter and summer. Another—the Riverside—shoots across a river. Still another—the Grotto—has built a grotesque cavernous cone from the mineral deposit left by its own water. Some appear to be connected by underground passages with pools and small lakes, since during the action of the geysers, the lakes are drained to gradually fill up while the geyser gathers new energy for another eruption.

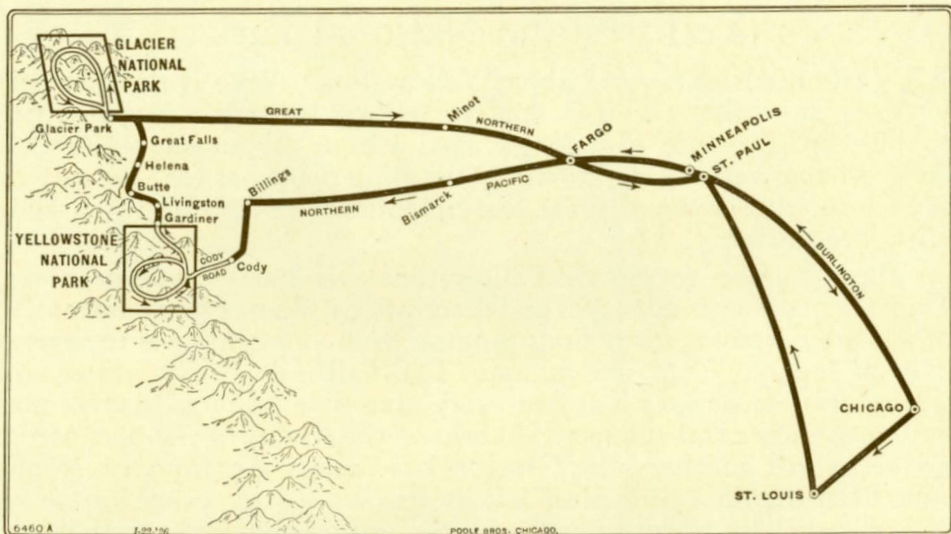
In some cases the superheated steam comes out through great beds of mud, forming the mammoth "paint pots" and mud volcanoes.

Side by side you will find pools of clearest water—one hot, the other ice cold—sometimes one blue, the other green. The sunshot steam rising from Amethyst Pool appears to be tinted in lovely shades of pink, blue and green, due to the marvelously colored rock basin which underlies the clear water.

Nor has Yellowstone National Park only these strange sights to sustain its reputation as a wonderland. The turbulent rivers which race through this queer land form a most remarkable series of cataracts and waterfalls which have their climax in "The Great Fall of the Yellowstone." Here the Yellowstone River, with scant time to calm down after negotiating the Upper Fall, plunges over a heroic precipice to fall with a mighty crash hundreds of feet below and go roaring down the terrifying gorge of which the Great Fall forms the head.

Beyond doubt, the most magnificent single scenic feature of Yellowstone is the Grand Canyon of which no truly adequate description has ever been written. Kipling tried to say it as other great writers have tried to put together the words which might fittingly portray the glory of the great painted gorge.

Yellowstone is like that—you can't make it relative. There is no standard of comparison.



Yellowstone and Glacier—Tour “C”

Complete Schedule and Itinerary

TUESDAY—Leave Chicago 11.00 p.m. from new Union Station, via Burlington Route. Leave St. Louis 2.15 p.m., via Burlington Route.

WEDNESDAY—St. Louis party arrives St. Paul 8.35 a.m. Chicago party arrives St. Paul 11.00 a.m. Luncheon and dinner St. Paul Hotel; afternoon motor trip to Fort Snelling, State Capitol, Mississippi River Gorge, University of Minnesota, Park System and other points of interest in the Twin Cities. Leave St. Paul 11.00 p.m., via the Northern Pacific Ry.

THURSDAY—En route through the wheat belt of Minnesota and North Dakota and the interesting bad land territory of western North Dakota.

FRIDAY—Arrive Cody 7.15 a.m., via Burlington. Breakfast Cody Inn. The Yellowstone Park trip begins here. Leave 9.20 a.m. by motor over the Cody Road—the famous ninety-mile scenic highway through the Shoshone Canyon, passing the great Irrigation Dam, through the Dude Ranch and Buffalo Bill country, crossing the Absarokas at Sylvan Pass, arriving Grand Canyon 5.31 p.m.

SATURDAY—Leave Grand Canyon 8.30 a.m. with stops at Norris Geyser, Mammoth Paint Pots, Excelsior Geyser and Biscuit Basin to Old Faithful, where twenty-four hours are spent among the greatest aggregation of geysers in all the world. Scores of them, large and small, of every description—ample time here to visit them all.

SUNDAY—Leave Old Faithful 1.50 p.m., crossing the Continental Divide at two different points, passing the Thumb, thence along the shore of Yellowstone Lake to Lake Hotel or Lodges. Plenty of bears here.



MONDAY—Leave Yellowstone Lake 10.00 a.m., along the Yellowstone River through Hayden Valley with stops at Mud Volcano, and Dragon's Mouth to the Grand Canyon, where we spend twenty-four hours, visiting the wonderful Grand Canyon and Falls of the Yellowstone River which make this one of the show places of the Park.

TUESDAY—Leave Grand Canyon 1.30 p.m., via Dunraven Pass, Tower Falls to Mammoth Hot Springs, for evening meal, with sufficient time for short walking trip over the Hot Spring Terraces and formations before saying good-bye to Yellowstone. Leave Gardiner 7.30 p.m., via the Northern Pacific.

WEDNESDAY—Leave Butte 8.00 a.m., via Great Northern, arrive Helena 10.50 a.m. where stop is made for motor and launch trip through the Gate-of-the-Mountains, with picnic luncheon. Leave Helena 6.20 p.m., passing through Missouri and Prickly Pear Canyons and Great Falls.

THURSDAY—Arrive Glacier Park 7.00 a.m. Breakfast Glacier Park Hotel. Morning visit to Blackfoot Indian Camp and Fish Hatchery. Afternoon motor trip to Two Medicine Valley, including a boat ride on beautiful Two Medicine Lake, and an hour's walking trip to Twin Falls.

FRIDAY—Morning motor trip to Many-Glacier Hotel. Afternoon boat trip across McDermott Lake and to the head of Josephine Lake for view of Grinnell Glacier.

SATURDAY—Morning hiking trip up Mt. Altyn Trail for view of Alpine District. Those desiring to do so can make side trip by horseback to Iceberg Lake at small extra cost. Leave Many-Glacier 4.00 p.m. by motor for St. Mary Chalet where party will remain overnight.

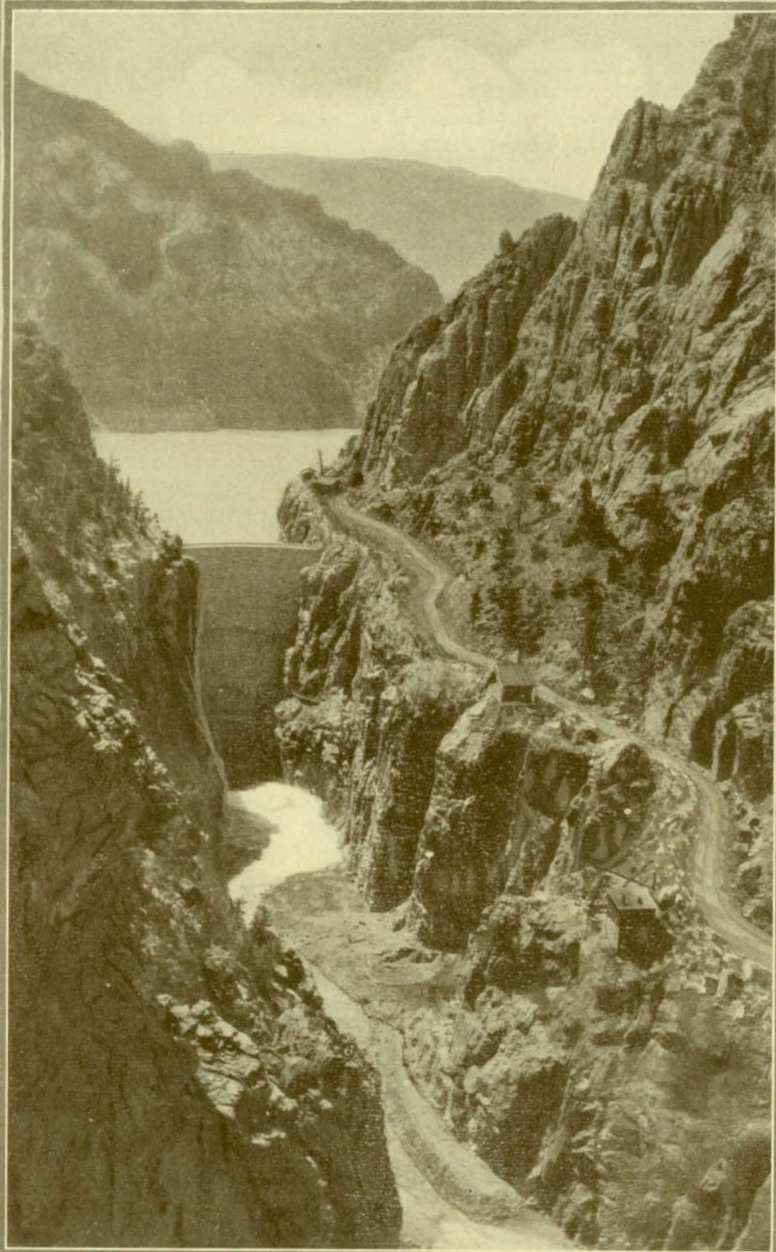
SUNDAY—Leave St. Mary Chalet 9.00 a.m. by boat for Going-to-the-Sun. A most attractive mountain view is had from this point. Hiking trip to Baring Falls and Janet Gorge. Leave 4.00 p.m. by boat for St. Mary, arrive Glacier Park Hotel 7.00 p.m. Leave Glacier Park 9.12 p.m., via Great Northern.

MONDAY—Passing through the grazing and wheat country of North Dakota.

TUESDAY—Arrive St. Paul 7.30 a.m. Beautiful daylight ride along the Mississippi for three hundred miles, arrive Chicago 7.55 p.m., via Burlington Route. Passengers for St. Louis leave Chicago 9.00 p.m., arrive St. Louis 7.00 a.m. Wednesday.

Thru Yellowstone and Glacier Parks, Pullman, Meals, Lodging, Motor Trips—All Necessary Expenses

COST OF COMPLETE TOURS		FROM CHICAGO		FROM ST. LOUIS	
		<i>Without</i> Railroad Ticket	<i>With</i> Railroad Ticket	<i>Without</i> Railroad Ticket	<i>With</i> Railroad Ticket
1 person to a lower berth.....	Hotels Thru Yellowstone	\$161.80	\$227.45	\$165.68	\$233.98
2 persons to a lower berth.....		141.80 each	207.45 each	144.62 each	212.92 each
1 person to an upper berth.....		153.80	219.45	157.25	225.55
1 person to a lower berth.....	Lodges Thru Yellowstone	\$152.80	\$218.45	\$156.58	\$224.88
2 persons to a lower berth.....		132.80 each	198.45 each	135.62 each	203.92 each
1 person to an upper berth.....		144.80	210.45	148.25	216.55



*Shoshone Canyon on the Cody
Road from Yellowstone*



The Cody Road

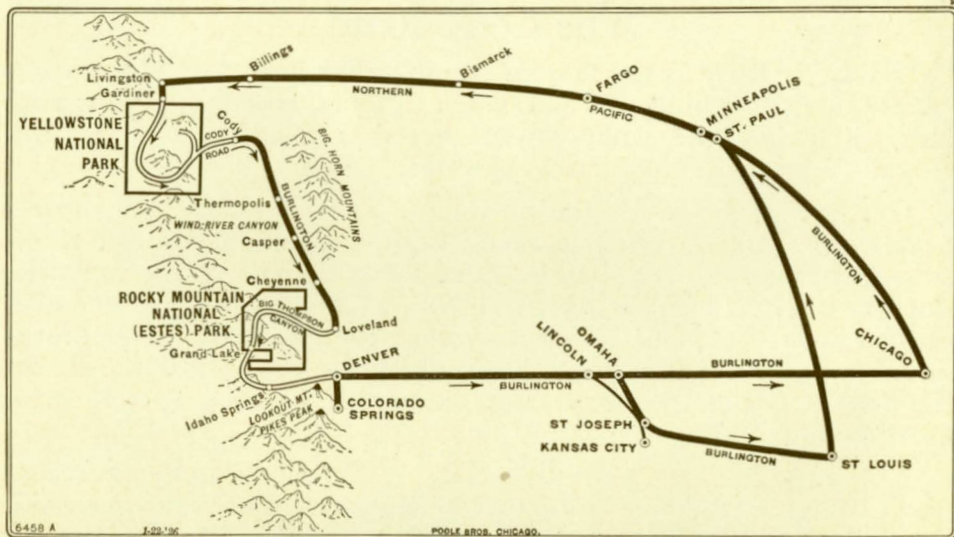
THE Cody Road is the famous scenic motor highway which starts at Cody, Wyoming, and ends at the Colonial Hotel on Yellowstone Lake—a ninety-mile wonder way of scenic splendor with a thrill around every curve—and curves there are, aplenty.

One goes to Cody on the Burlington and, breakfast over, boards a twelve-passenger touring car, whirls down the double hairpin turns, crosses the bridge over the Shoshone River, spirals up the opposite slope to the old frontier town which was Buffalo Bill's home and, turning west, heads for the mountains—the Shoshone River alongside; beyond it the historic plateau where the Crows and the Blackfeet fought it out; the way ahead seemingly blocked by two great guardian mountains.

Not quite blocked however. For the Shoshone finds a tortuous way through at the bottom of a tremendous canyon along whose side the Cody Road runs on a shelf hewn out of the solid granite; now close down beside the roaring river, now hundreds of feet up above the stream, down and up and across the high bridge, through twin tunnels bored through the rock, in and out for five miles of thrills, and up the great hill to the top of the big government irrigation dam where a stop is made while one catches his breath and inspects this gigantic concrete obstacle behind which the water is piled up to within a few feet of the crest—and loses his breath again upon looking down the other side to the tiny ribbon of water more than 300 feet below.

Then on—more tunnels, more canyon with its almost perpendicular walls; the road winds around the shore of a great lake and enters the ranch country; the canyon walls give way to lower and remoter cliffs in whose curiously eroded crests we see fantastic formations silhouetted against the sky—an elephant's head, the palm of a hand, Punch and Judy, Thor's anvil, and scores more—a queer, crazy country.

On and on runs the Cody Road, into the dude ranch region and for forty miles through the vast Shoshone National Forest. Luncheon at Sylvan Pass Lodge and we whirl away again through the jack pines into Yellowstone; up the seven-mile hill to the snow on Sylvan Pass where the Cody Road crosses the Absaroka Range. On and on—mountains, forest, stream, waterfalls, a herd of elk, perhaps a bear, the Grand Tetons—a thrill a minute, and finally through the pines a glimpse of beautiful Yellowstone Lake—the end of the Cody Road and the beginning of new "adventures in wonderland."



Yellowstone and Colorado—Tour “D”

Complete Schedule and Itinerary

SUNDAY—Leave Chicago 10.35 a.m. from new Union Station, via Burlington Route, skirting the east shore of the Mississippi River for over three hundred miles during the afternoon. Leave St. Paul 11.00 p.m.

SATURDAY—Leave St. Louis 2.15 p.m., via Burlington Route.

SUNDAY—St. Louis party arrive St. Paul 8.35 a.m. remaining until evening. Luncheon and dinner St. Paul Hotel with auto trip to interesting points around the Twin Cities, joining Chicago party here, leaving St. Paul 11.00 p.m.

MONDAY—En route through the wheat fields of Minnesota and North Dakota.

TUESDAY—Breakfast Livingston. Arrive Gardiner, the entrance to wonderland, 11.15 a.m., via Northern Pacific. Luncheon Mammoth Hot Springs. Afternoon hiking trip over Hot Springs Terraces.

WEDNESDAY—Through three famous geyser basins to Old Faithful where we spend twenty-four hours. Afternoon hiking trip among the greatest aggregation of geysers in the world—boiling springs, seething cauldrons, steaming pools, scores of geysers—a thousand phases of hot water phenomena, surprising, unheard-of.

THURSDAY—Leave Old Faithful 1.50 p.m., twice over Continental Divide and along the shore of Yellowstone Lake to the Lake Hotel or Lodges.

FRIDAY—Along the Yellowstone River through Hayden Valley with side trip to Dunraven Pass. Hotel party goes via Artists Point, lodge party via Inspiration Point for a first view of Grand Canyon and Falls, arriving Grand Canyon 12.00



noon. Plenty of time in the afternoon to view the majestic Great Falls from various vantage points and to explore the wonderful Painted Canyon.

SATURDAY—Leave Grand Canyon 9.00 a.m. over the Cody Road—the famous ninety-mile scenic highway through the Buffalo Bill country, over Sylvan Pass and by the great Shoshone Irrigation Dam and through the Shoshone Canyon. Arrive Cody 4.55 p.m. Overnight in Cody.

SUNDAY—Leave Cody 8.20 a.m. over the Burlington's Intermountain route through Wind River Canyon, Thermopolis Hot Springs, and Casper oil fields—Big Horn Mountains to the East, Rockies to the West.

MONDAY—Arrive Loveland 7.37 a.m. Breakfast Lovelander Hotel. Motor via the wonderful Big Thompson Canyon to Estes Park Chalet for an afternoon of rest at this delightful mountain resort.

TUESDAY—Leave Estes Park Chalet 8.00 a.m. for scenic motor trip through Horseshoe Park and over the snow at Fall River and Milner passes and along side the headwaters of the Colorado River, a most wonderful trip. Afternoon and night at Grand Lake which is the largest body of water in Colorado and the highest anchorage in the world.

WEDNESDAY—Leave Grand Lake 8.00 a.m. for another interesting trip—over Berthoud Pass, including Clear Creek Canyon and Idaho Springs, reaching Denver early in the afternoon. Dinner Albany Hotel; twilight trip around residence section and City Parks, leaving 11.00 p.m. for Colorado Springs.

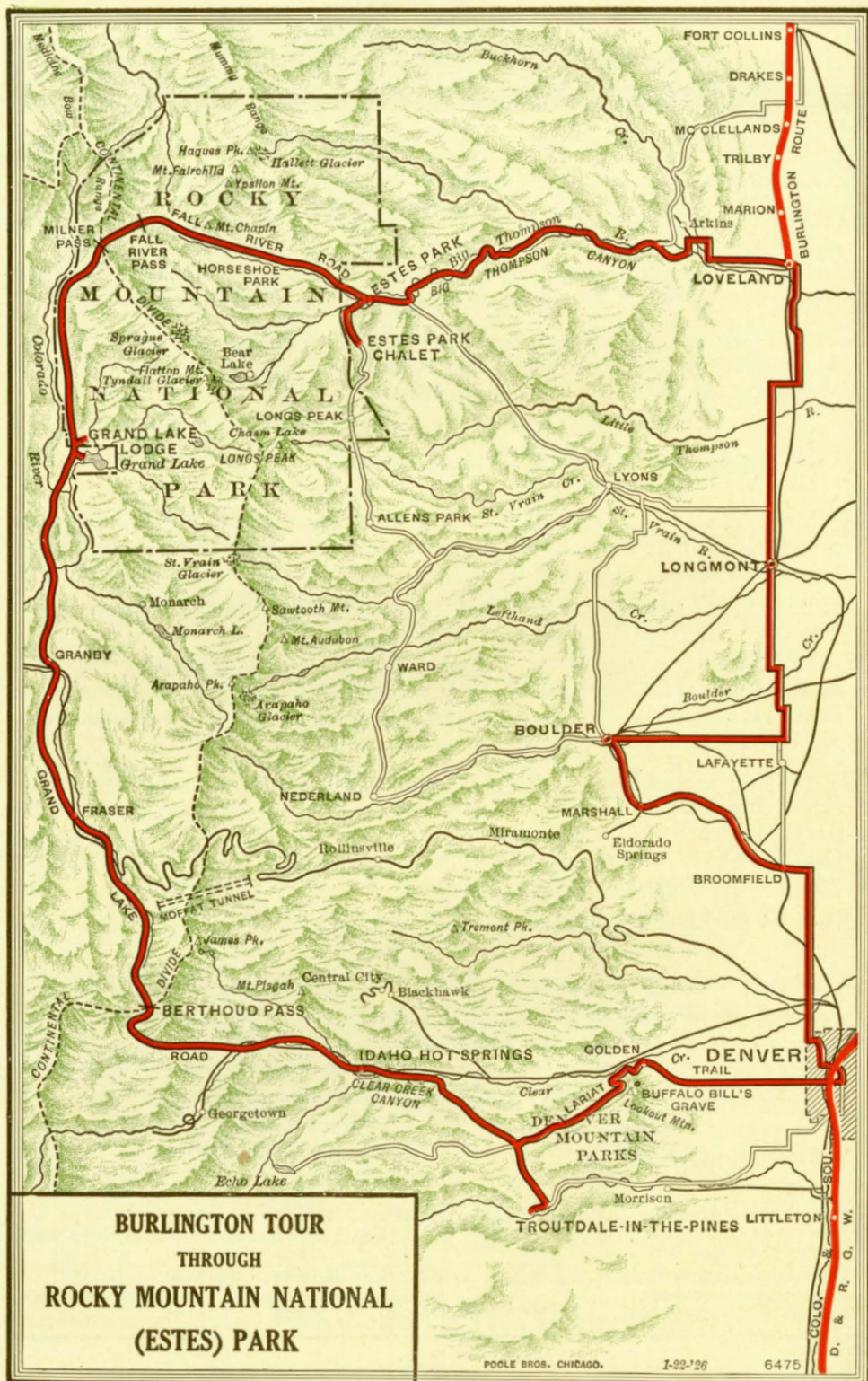
THURSDAY—Arrive Colorado Springs 7.00 a.m. Morning trip to summit of Pikes Peak. Breakfast and luncheon at Cliff House, Manitou. Afternoon motor trip to the Garden of the Gods, Williams Canyon, Cave of the Winds, South Cheyenne Canyon. Dinner at the Antlers Hotel, Colorado Springs. Leave Colorado Springs 7.15 p.m., via Colorado and Southern Ry.

FRIDAY—En route through grazing and farming country of western Nebraska, arriving Omaha 3.30 p.m. where St. Louis party leaves tour.

SATURDAY—Arrive Chicago 7.00 a.m., via Burlington Route. Arrive St. Louis 7.19 a.m., via Burlington Route.

Through Yellowstone, Pullman, Meals, Lodging, Motor Trips—All Necessary Expenses

COST OF COMPLETE TOURS		FROM CHICAGO		FROM ST. LOUIS	
		Without Railroad Ticket	With Railroad Ticket	Without Railroad Ticket	With Railroad Ticket
1 person to a lower berth.....	Hotels Thru Yellowstone	\$161.54	\$220.89	\$165.59	\$227.54
2 persons to a lower berth.....		143.22 each	202.57 each	148.02 each	209.97 each
1 person to an upper berth.....		154.20	213.55	158.55	220.50
1 person to a lower berth.....	Lodges Thru Yellowstone	\$152.54	\$211.89	\$156.59	\$218.54
2 persons to a lower berth.....		134.22 each	193.57 each	139.02 each	200.97 each
1 person to an upper berth.....		145.20	204.55	149.55	211.50





Grand Circle Tour of Rocky Mountain National Park

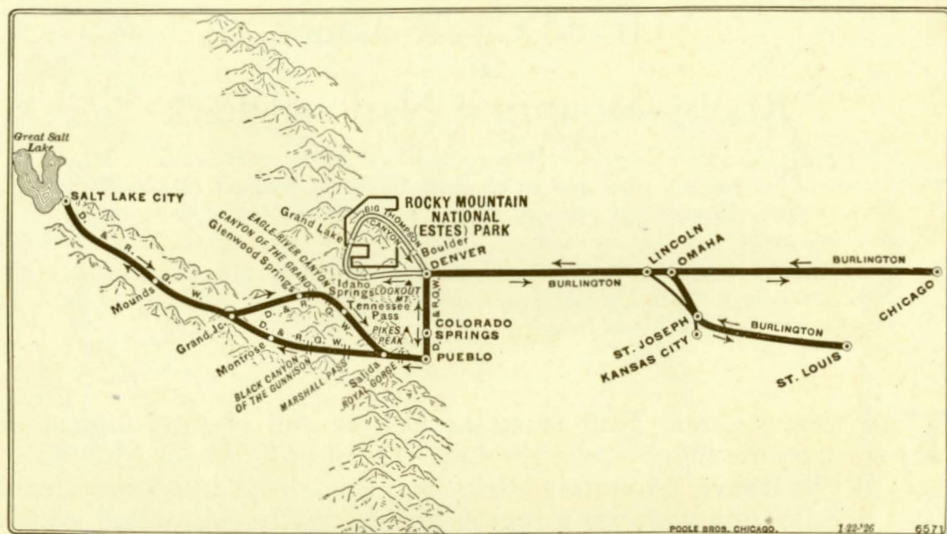
"Rocky Mountain National Park holds adventure for every visitor. In it the world is new and wild and on the imagination it produces the explorer's stirring joys. Its mile-high unfenced scenes give freedom—splendid landscapes of the ideal world."

"Here for everyone are health, hope, efficiency and joy. Here prejudice ceases. Here each is at his best. In this great wilderness meeting place the East and the West understand and become friends."

THE Grand Circle Tour starts at Denver and plunges almost at once into the heights, via the Lariat Trail up Lookout Mountain, through the Denver Mountain Parks, and then drops into Clear Creek Canyon following through a region of rare charm the stream which became famous during the great gold rush days; through Idaho Springs, a renowned hot springs resort, and climbs steadily to Berthoud Pass, the gate between the east and west sides of the range, on and on through the Colorado Rockies, skirting James Peak through which the great Moffat tunnel is being driven, and so to Grand Lake, the highest anchorage in the world. Then along the Colorado River and past the series of lakes which form the source of this stream that made the Grand Canyon in Arizona, and up the switch-back trail to the north gate through the range, which is Milner Pass—a thrilling height where the snow lies all the year 'round, and from which the peaks in the Medicine Bow Range, fifty miles away, are seen to the north through LaPoudre Pass with the great Mummy Range sprawled out nearer at hand to the northeast.

Along the devious course of Fall River, the road winds its way through alpine scenery of startling grandeur down the east slope of the Continental Divide, through Horseshoe Park to the picturesque village of Estes Park where it ends in a series of forks which lead hither and yon to some forty hotels, rustic inns, alpine lodges, to the lakes, waterfalls, canyons, trout streams, and a hundred nooks and corners of scenic attraction of this beautiful national playground.

The climax of the Grand Circle Tour comes with the thrilling twenty-two mile motor ride through the canyon cut by the riotous Big Thompson River between towering rock walls—a feature trip included in all three of the BURLINGTON TOURS which go through Colorado.



Colorado—Salt Lake—Tour “E”

Complete Schedule and Itinerary

SATURDAY—Leave Chicago 11.30 p.m. from new Union Station, via Burlington Route. Leave St. Louis 9.01 p.m., via Burlington Route.

SUNDAY—St. Louis party en route via St. Joseph and Missouri River, arrive Omaha 11.50 a.m. Luncheon Fontanelle Hotel with auto trip, joining Chicago party, leaving Omaha 4.25 p.m.

MONDAY—Arrive Denver 7.15 a.m. Leave Denver 8.15 a.m. Arrive Colorado Springs 10.55 a.m. Afternoon auto trip to summit of Pikes Peak. Luncheon, dinner and overnight at Antlers Hotel.

TUESDAY—Morning auto trip—circle drive—including Garden of the Gods, Cave of the Winds, South Cheyenne Canyon, Manitou, Seven Falls and other renowned attractions of this region. Breakfast, luncheon and dinner Antlers Hotel: Leave Colorado Springs 9.57 p.m., via D. & R. G. W. R. R.

WEDNESDAY—Arrive Salida 6.00 a.m. Breakfast Salida, thence via Narrow Gauge Route for a wonderful trip over Marshall Pass and through the Black Canyon of the Gunnison. Arrive Grand Junction 6.35 p.m. Leave 10.00 p.m. for Salt Lake.

THURSDAY—Arrive Salt Lake 8.30 a.m. Autos from station for drive around city embracing Temple Square and State Capitol. Organ recital at the Mormon Tabernacle at twelve o'clock. Luncheon Hotel Utah. Afternoon trip to Saltair Beach for a dip in Great Salt Lake. Leave Salt Lake 6.00 p.m.



FRIDAY—En route on the Rio Grande through the Canyon of the Grand River, Glenwood Springs, Eagle River Canyon, and over Tennessee Pass, with a stop at the Hanging Bridge in the narrowest part of the famous Royal Gorge—a wonderful daylight ride through the Colorado Rockies, arriving Denver 9.00 p.m. Overnight at the new Cosmopolitan Hotel.

SATURDAY—An afternoon motor trip around the residence section and City Parks. Breakfast, luncheon, dinner and overnight Cosmopolitan Hotel.

SUNDAY—Leave Denver at 9.00 a.m. for motor trip via Golden, the Lariat Trail, over Lookout Mountain, through Denver's Mountain Parks and Bergen Park to Troutdale-in-the-Pines for luncheon, thence via Clear Creek Canyon to Idaho Springs Hotel for overnight.

MONDAY—Leave Idaho Springs Hotel 8.00 a.m., via motor through Clear Creek Canyon, the Pike National Forest, and over the Continental Divide at Berthoud Pass; then through the Arapahoe National Forest, arriving Grand Lake for luncheon. We spend the afternoon and overnight here.

TUESDAY—Leave Grand Lake 8.00 a.m., via motor for trip over Milner and Fall River Passes, through Horseshoe Park, arriving Estes Park Chalet for luncheon. Overnight here.

WEDNESDAY—At Estes Park Chalet. There is no definite program here. Do as you please. A great variety of short side trips to placid lakes or flowered valleys will call you to the great out-of-doors.

THURSDAY—Leave Estes Park Chalet 8.00 a.m., via the Big Thompson Canyon and Loveland. Luncheon at Boulderado Hotel in Boulder. Arrive Denver late in the afternoon; dinner Cosmopolitan Hotel. Leave 11.30 p.m., via Burlington Route.

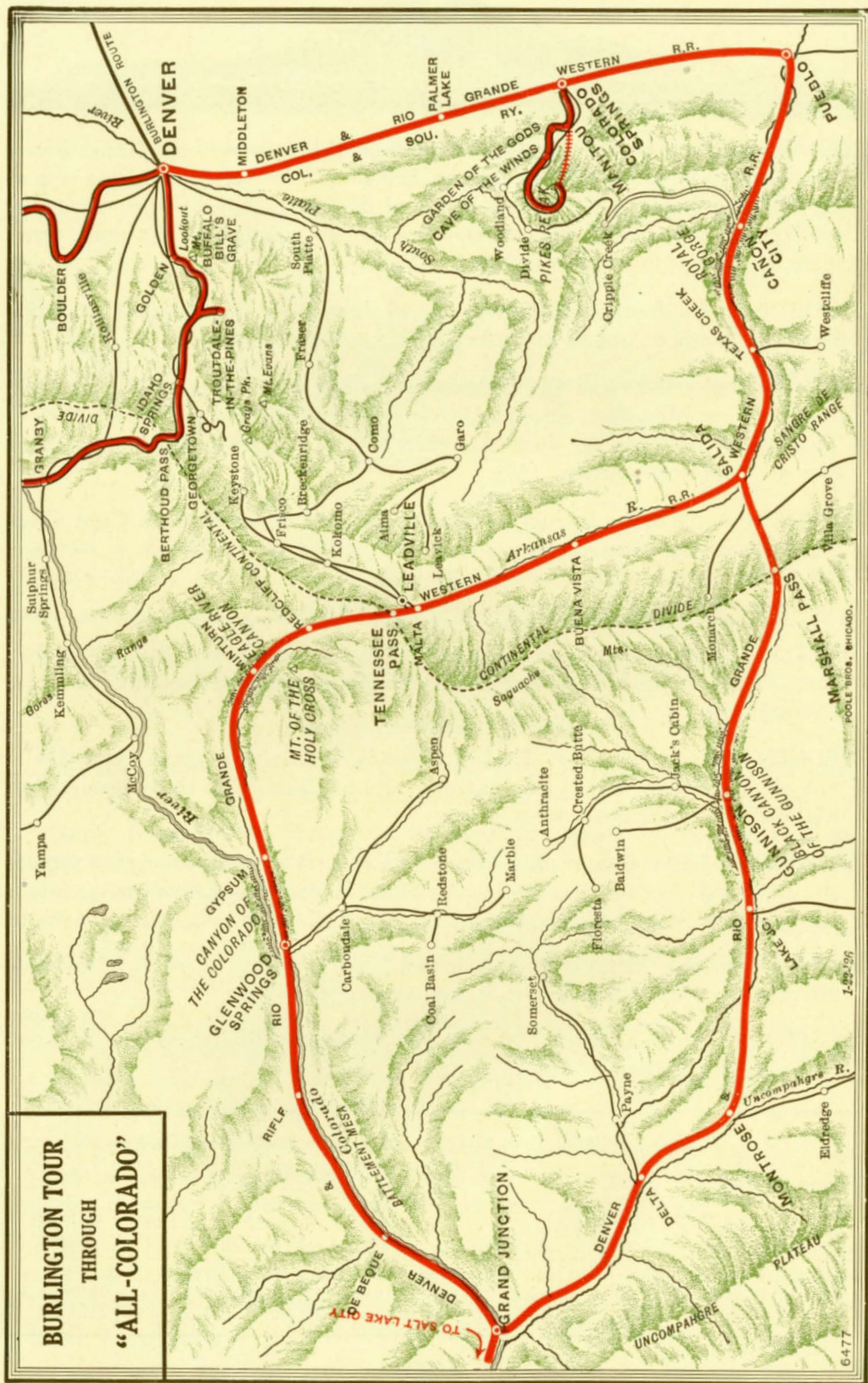
FRIDAY—En route through the grazing and farming country of western Nebraska, arriving Omaha 3.30 p.m. where St. Louis party leaves tour.

SATURDAY—Arrive Chicago 7.00 a.m., via Burlington Route. Arrive St. Louis 7.19 a.m., via Burlington Route.

Embracing Pullman, Meals, Lodging, Motor Trips—All Necessary Expenses

COST OF COMPLETE TOURS	FROM CHICAGO		FROM ST. LOUIS	
	<i>Without Railroad Ticket</i>	<i>With Railroad Ticket</i>	<i>Without Railroad Ticket</i>	<i>With Railroad Ticket</i>
1 person to a lower berth.....	\$140.26	\$199.61	\$140.26	\$199.06
2 persons to a lower berth.....	122.26 each	181.61 each	123.01 each	181.81 each
1 person to an upper berth.....	133.05	192.40	133.35	192.15

**BURLINGTON TOUR
THROUGH
"ALL-COLORADO"**



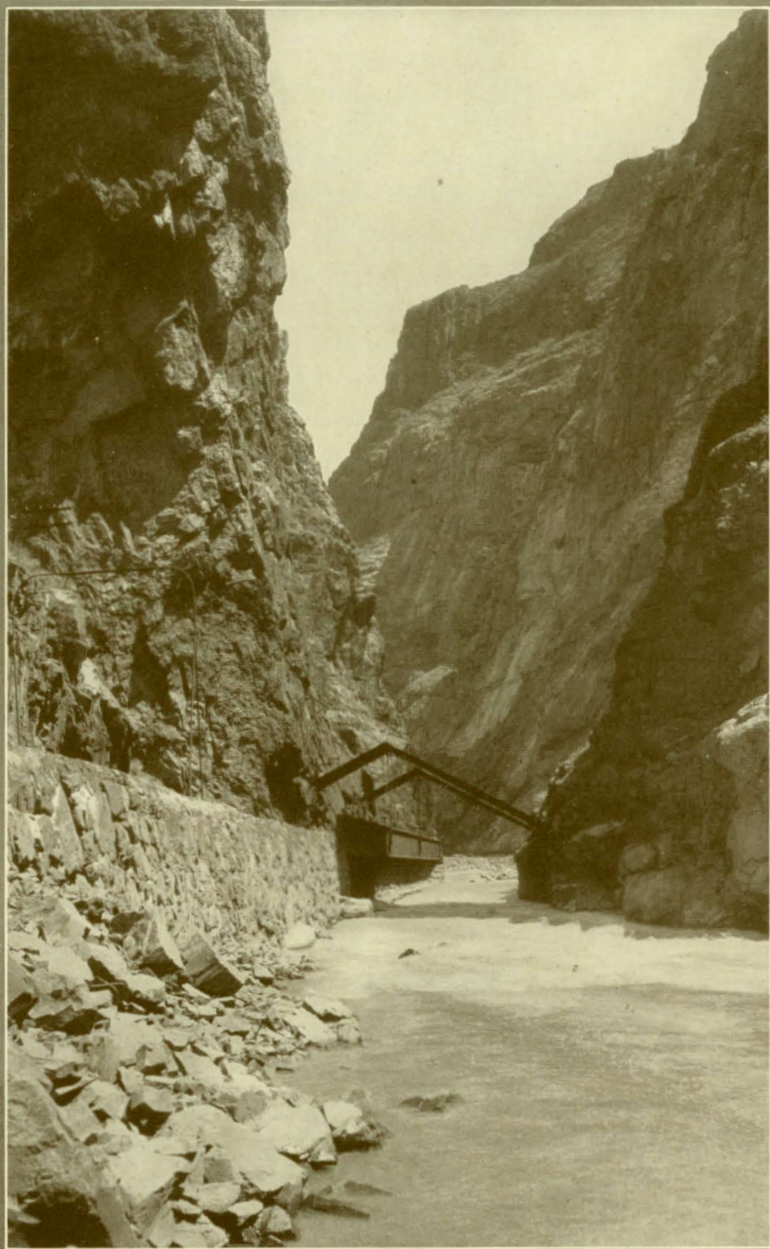


Scenic Colorado

WITH the fourfold purpose of having the All-Colorado Tour embrace the widest scope of territory possible; of making possible a survey of the regions of greatest scenic display; of preserving their distinctiveness, and of adhering to the circuit tour idea, the westward route to be taken by Tour E is via the Rio Grande's narrow gauge line—the original scenic route across Colorado. It takes us over Marshall Pass from which high vantage point we see Pikes Peak fifty miles northwestward and the snow-crowned giants of the Sangre de Christo Range fifty miles to the southeast with a veritable sea of mountains in between—a hundred-mile panorama of the mountain world truly inspiring. Then through the Black Canyon of the Gunnison, the Gunnison National Forest, alongside the Uncompahgre River, Curecanti Needle, Chipeta Falls—all by daylight—and so to Salt Lake City for a day of sight-seeing in the desert capital of "the Promised Land" including the Temple Square, state Capitol, an organ concert in the Mormon Tabernacle and a trip to Saltair Beach for a swim in Great Salt Lake.

And back through the Colorado Rockies via an entirely different route—through Glenwood Springs, the canyons of the Eagle and the Grand Rivers, Tennessee Pass, with a stop at the Hanging Bridge in the narrowest place in the world-renowned Royal Gorge. All this by daylight too; a comprehensive circuit embracing the chief scenic allurements of the great mountain state; a journey which is acclaimed by travelers the most magnificent panorama of mountain scenery accessible by rail travel.

Little need here be said about the galaxy of show places which surround the resort city of Colorado Springs. The things to do and the sights to see are so well known that Pikes Peak, the Garden of the Gods, South Cheyenne Canyon, Seven Falls and Cave of the Winds are familiar terms. No vacation trip to Colorado would be complete which did not include these paramount attractions, and Burlington Escorted Tours are especially planned to "do" them all.



*Hanging Bridge in the
Royal Gorge, Grand Canyon
of the Arkansas, Colorado*



Temple Square
Salt Lake City

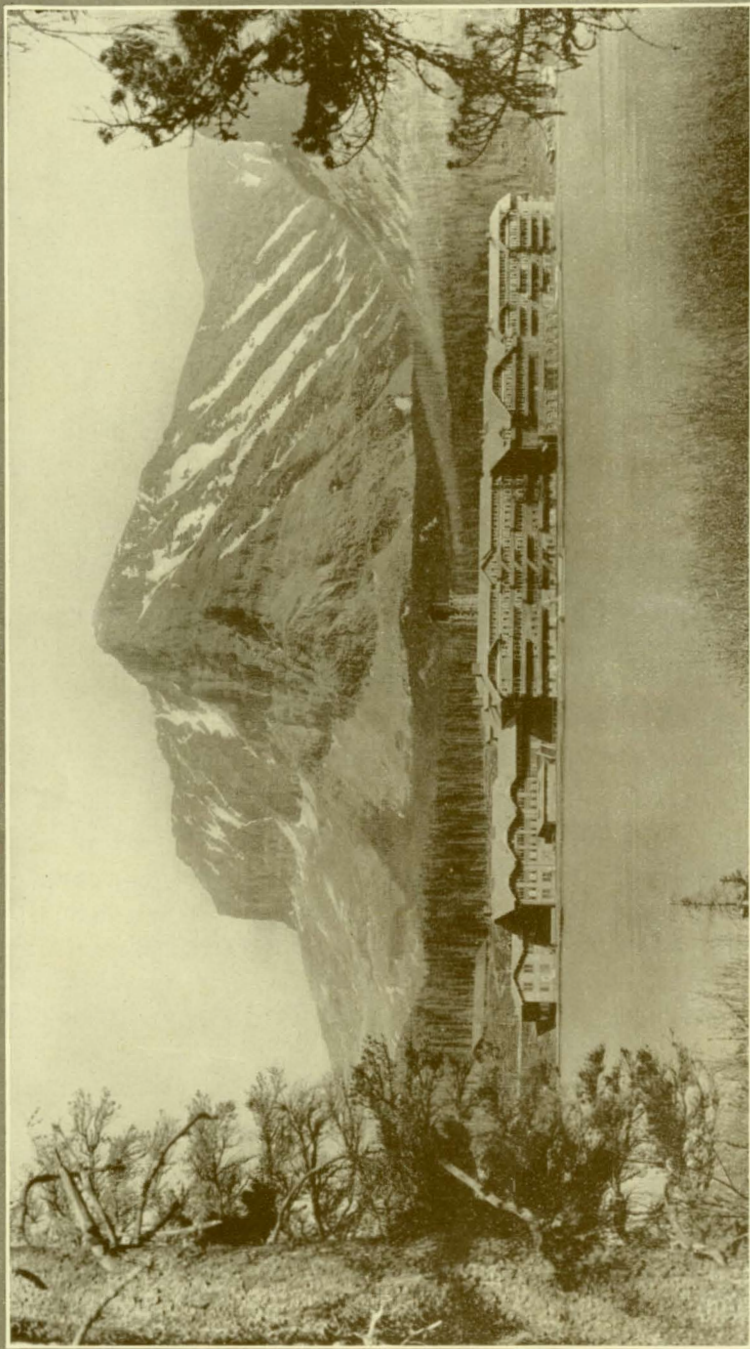
General Information

COST OF TOURS

THE cost of each "Burlington Escorted Tour" covers all necessary expenses en route and is the exact total of the component costs of—sleeping car accommodations, the automobile fares, the hotels, the meals, the sight-seeing tours, the special rates for pre-arranged diversions, and the tour of the national parks, with or without railroad ticket (but does not include tips). Only the actual cost of these essentials and diversions compose the aggregate costs of these tours, no overhead—not a cent added. We are confident that our guests will be entirely pleased with all arrangements—all that is expected is that they place themselves in our care, that they abandon every perplexity of travel and enter into the spirit of the tours, letting our organization do the rest.

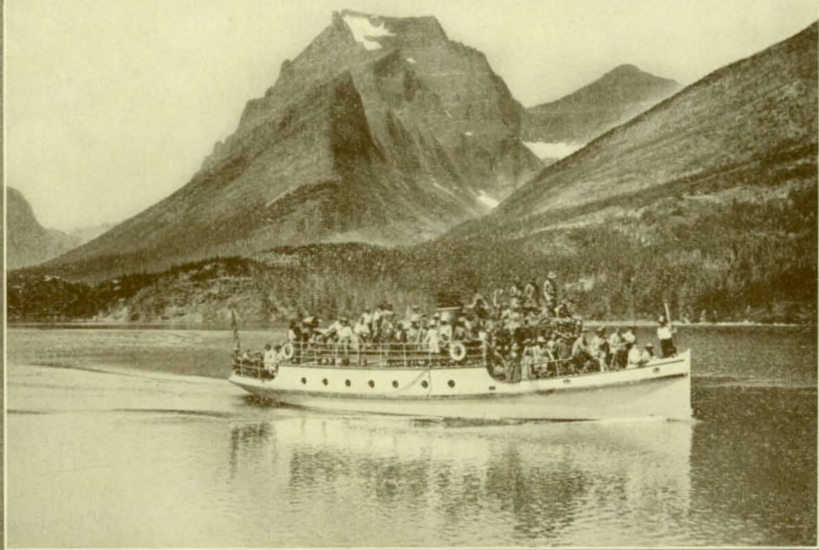
The figures shown herein from Chicago and St. Louis *without rail ticket* are the tour costs for passengers coming from east and south of these points with rail ticket purchased at home station.

Rates for children will be based on age and accommodations desired for them.



*Many-Glacier Hotel on the Shore of Lake McDermott
Glacier National Park*

COPYRIGHT BY HILEMAN



*Going-to-the-Sun Mountain and
St Mary Lake—Glacier National Park*

COPYRIGHT BY HILEMAN

COST DEPENDS UPON PULLMAN SPACE

It will be noted that the cost of a tour varies according to Pullman accommodations used and that the individual cost is less if two persons occupy one berth or if two or more persons occupy one compartment or drawing-room. Specific rates are quoted for berths (upper and lower). Quotations involving section, compartment or drawing-room will depend upon number of occupants and will be given upon request.

HOTEL ACCOMMODATIONS

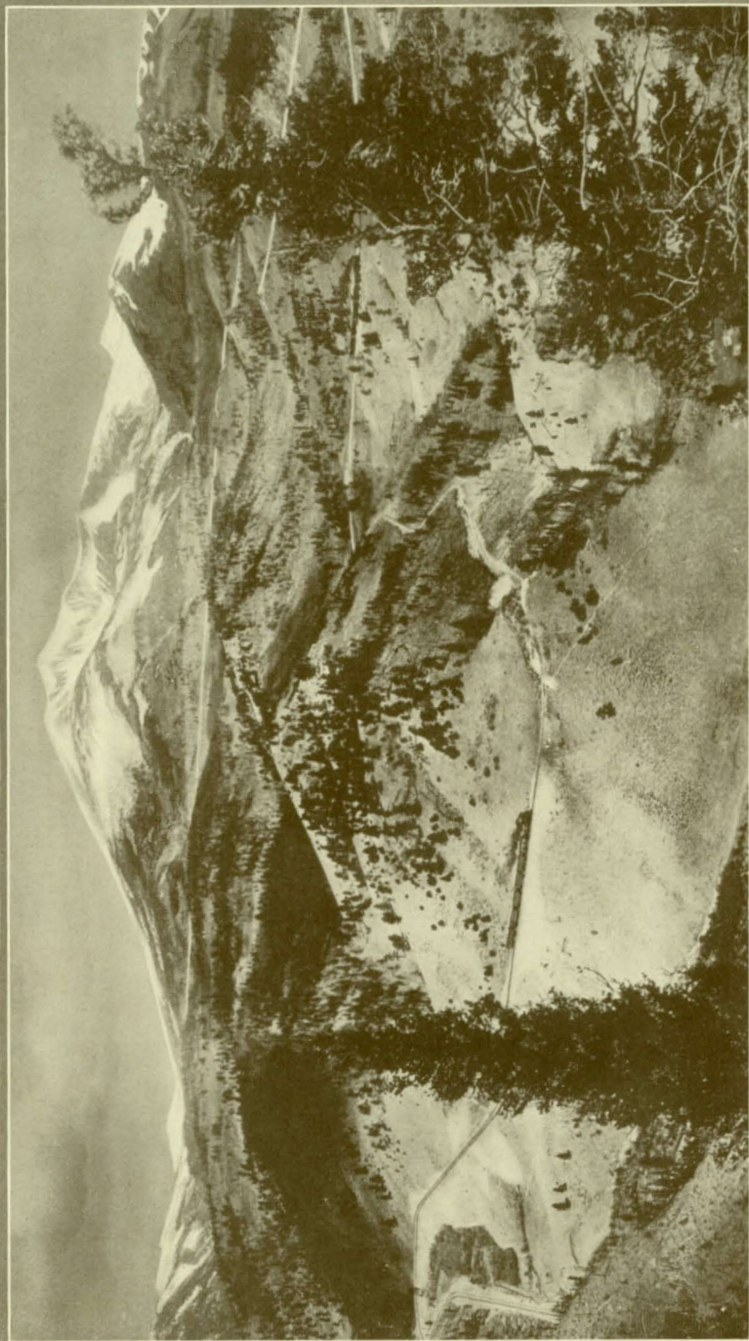
Costs quoted contemplate two persons per room without bath. Single rooms are seldom available. Rooms with bath are to be had at all stopping points at usual extra cost.

ACCOMMODATIONS IN YELLOWSTONE

There are two types of accommodation in Yellowstone Park—hotels and lodges.

The hotels are great hostelries, modern in appointments and attractive as to architecture.

The lodges are miniature villages of rustic buildings embracing community recreation halls, dining rooms where all have meals family style, post office, etc.—surrounded by the groups of lodges which are the sleeping quarters.



Marshall Pass, One of Colorado's Most Inspiring Viewpoints



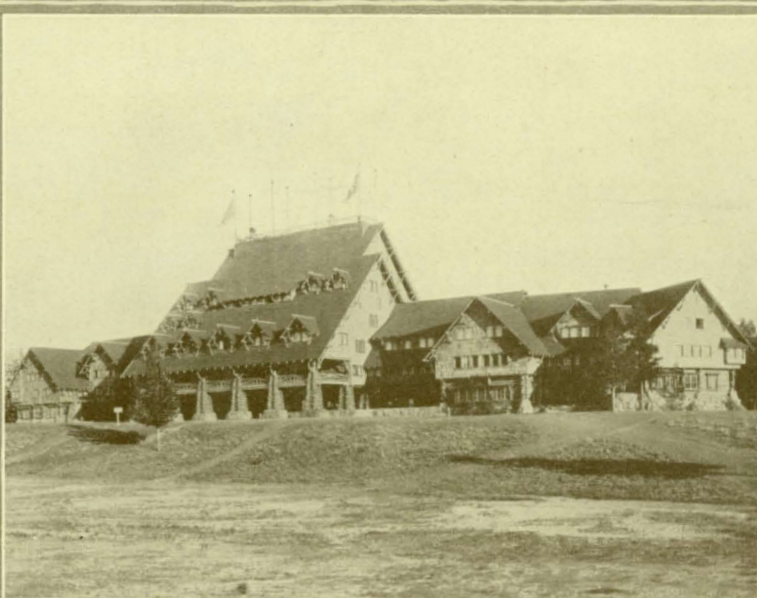
*Pikes Peak
from Colorado Springs*

PURCHASE THROUGH RAIL TICKET

Passengers coming from points east or south of Chicago or St. Louis will find it to their advantage, because of saving in the ticket rate, to purchase through summer excursion ticket from their home station. For illustration, passenger starting from Detroit desiring to join Tour A should purchase railroad ticket Detroit to Glacier Park returning via Yellowstone Park at \$81.35; add to this the cost shown for complete Tour A—*without railroad ticket*—\$160.80, a total of \$242.15, which represents the complete cost for railroad transportation from Detroit and complete tour from Chicago and back to Chicago. Your agent has been fully advised as to the routing of our tours and will be glad to arrange your reservation.

HOW TO JOIN TOURS

Bookings for tours should be arranged through J. G. Delaplaine, Manager, Burlington Tours, Burlington Building, 547 West Jackson Blvd., Chicago. However all Burlington Route, Great Northern and Northern Pacific representatives everywhere are authorized agents for these tours and are prepared to render every assistance in the way of supplying detailed information, making reservations and definitely booking passengers.



*Old Faithful Inn and the
Lake Hotel Lobby
Yellowstone National Park*
COPYRIGHT BY HAYNES



"Hold-Up" Bear in Yellowstone

Use reservation blank on page 43 being particular to give all information requested therein.

Final arrangements and full payment for tour must be made seven days before departure.

Bookings are not made for holders of free railroad transportation.

ESCORT WITH TOURS

Each tour will be under escort of a well-informed experienced railroad representative to relieve passengers of unaccustomed travel details and smooth the way to a memorable care-free vacation. No charge is made for this service.

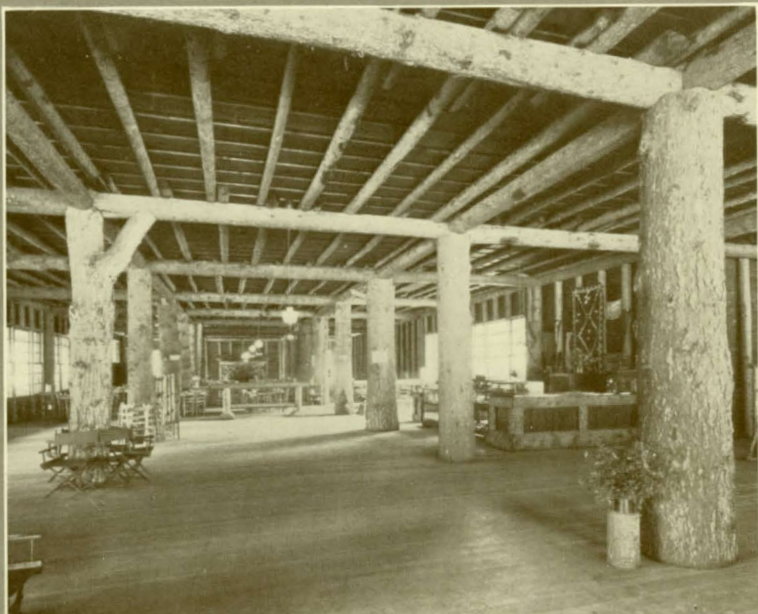
MEALS

Tour costs shown herein include all meals—on the trains the famous dining-car service of the Burlington, Great Northern and Northern Pacific—elsewhere at first-class hotels.

HORSEBACK TRIPS

Saddle horses may be hired at Many-Glacier Hotel in *Glacier Park; at Old Faithful and the Grand Canyon in Yellowstone Park, and at the Estes Park Chalets in Rocky Mountain National Park.

*Fourteen-mile round trip to Iceberg Lake, \$4.00. Those preferring to make the trip from Many-Glacier Hotel to Going-to-the Sun by horseback over Piegan Pass, instead of via motor and boat, may arrange to do so at an extra charge of \$1.50.



*Recreation Hall
and Dining Room
Yellowstone Park Lodges*
COPYRIGHT BY HAYNES



SWIMMING POOLS

There are inside plunges in the the Glacier Park Hotel and Many-Glacier Hotel in Glacier Park, and a mineral water natatorium near the Idaho Hot Springs Hotel in Colorado. A great feature of a Yellowstone Tour is usually a swim in the open swimming pools of geyser water (naturally warm) at Mammoth Springs Lodges and Old Faithful. Charge for plunge, including bathing suit, is fifty cents.

YOUR APPAREL AND BAGGAGE

For these short summer tours where long distances by train and automobile are covered daily, trunks are unnecessary. However they can be checked if desired, to certain destinations where needed, but suitcases or traveling bags large enough to hold sufficient clothing can easily be carried everywhere throughout the tour.

While these are summer journeys, the nights in the mountains, the cool and invigorating auto rides, require medium weight and even heavy wraps, overcoats, sport coats, sweater coats, and the like. Traveling and outing suits and knickerbockers are worn throughout the mountain territory.

A most useful, all-round outer coat is a wind and weather-proof affair of medium weight.

Stout sport shoes should be worn. In the hotels, after the day's itinerary, the dinner hour and evening lounge or dance naturally suggest a change from the habiliments of travel and out-of-door life.

The free allowance of hand baggage which may be carried in automobiles in the National Parks is twenty-five pounds.

DESCRIPTIVE BOOKLETS

This booklet of "Burlington Escorted Tours," manifestly can be but a practical description of the tours, and information as to joining them. You are invited to ask for such of the following descriptive publications as appeal to you in the consideration of any tour.

We shall be pleased to mail them free of charge.

Yellowstone Park
Glacier Park
Rocky Mountain National—
(Estes) Park
Rainier National Park

Scenic Colorado and Utah
The Cody Road
The Mississippi River Scenic Line
Alaska
Pacific Northwest



*The Spacious Lounge in the
Many-Glacier Hotel*

COPYRIGHT BY HILEMAN



Calendar Schedule

Burlington Escorted Tours

GLACIER-YELLOWSTONE TOUR	A-1	A-2	A-3	A-4	A-5	A-6	A-7	A-8	A-9	A-10	A-11	A-12	A-13
Lv. Chicago 11.00 pm. Sat.	June 12	June 19	June 26	July 3	July 10	July 17	July 24	July 31	Aug. 7	Aug. 14	Aug. 21	Aug. 28	Sept. 4
Lv. St. Louis 2.15 pm. Sat.	" 12	" 19	" 26	" 3	" 10	" 17	" 24	" 31	" 7	" 14	" 21	" 28	" 4
Lv. St. Paul 10.45 pm. Sun.	" 13	" 20	" 27	" 4	" 11	" 18	" 25	" 31	" 8	" 15	" 22	" 29	" 5
Ar. Glacier Pk. 8.05 am. Tues.	" 15	" 22	" 29	" 6	" 13	" 20	" 27	" 3	" 10	" 17	" 24	" 31	" 7
Lv. Glacier Pk. 11.59 pm. Fri.	" 18	" 25	July 2	" 9	" 16	" 23	" 30	" 6	" 13	" 20	" 27	Sept. 3	" 10
Ar. Gardiner 11.15 am. Sun.	" 20	" 27	" 4	" 11	" 18	" 25	Aug. 1	" 8	" 15	" 22	" 29	" 5	" 12
Lv. Cody 8.30 pm. Thur.	" 24	July 1	" 8	" 15	" 22	" 29	" 5	" 12	" 19	" 26	Sept. 2	" 9	" 16
Ar. St. Paul 7.15 am. Sat.	" 26	" 3	" 10	" 17	" 24	" 31	" 7	" 14	" 21	" 28	" 4	" 11	" 18
Ar. Chicago 7.55 pm. Sat.	" 26	" 3	" 10	" 17	" 24	" 31	" 7	" 14	" 21	" 28	" 4	" 11	" 18
Ar. St. Louis 7.00 am. Sun.	" 27	" 4	" 11	" 18	" 25	Aug. 1	" 8	" 15	" 22	" 29	" 5	" 12	" 19

COLORADO-YELLOWSTONE TOUR	B-1	B-2	B-3	B-4	B-5	B-6	B-7	B-8	B-9	B-10	B-11	B-12	B-13
Lv. Chicago 11.30 pm. Thur.	June 17	June 24	July 1	July 8	July 15	July 22	July 29	Aug. 5	Aug. 12	Aug. 19	Aug. 26	Sept. 2	Sept. 9
Lv. St. Louis 9.01 pm. Thur.	" 17	" 24	" 1	" 8	" 15	" 22	" 29	" 5	" 12	" 19	" 26	" 2	" 9
Lv. Omaha 4.25 pm. Fri.	" 18	" 25	" 2	" 9	" 16	" 23	" 30	" 6	" 13	" 20	" 27	" 3	" 10
Ar. Denver 7.15 am. Sat.	" 19	" 26	" 3	" 10	" 17	" 24	" 31	" 7	" 14	" 21	" 28	" 4	" 11
Ar. Colo. Sprgs. 7.00 am. Sun.	" 20	" 27	" 4	" 11	" 18	" 25	Aug. 1	" 8	" 15	" 22	" 29	" 5	" 12
Ar. Grand Lake 5.00 pm. Mon.	" 21	" 28	" 5	" 12	" 19	" 26	" 2	" 9	" 16	" 23	" 30	" 6	" 13
Lv. Loveland 8.21 pm. Tues.	" 22	" 29	" 6	" 13	" 20	" 27	" 3	" 10	" 17	" 24	" 31	" 7	" 14
Ar. Gardiner 11.15 am. Thur.	" 24	July 1	" 8	" 15	" 22	" 29	" 5	" 12	" 19	" 26	Sept. 2	" 9	" 16
Lv. Cody 8.30 pm. Mon.	" 28	" 5	" 12	" 19	" 26	Aug. 2	" 9	" 16	" 23	" 30	" 6	" 13	" 20
Ar. St. Paul 7.15 am. Wed.	" 30	" 7	" 14	" 21	" 28	" 4	" 11	" 18	" 25	Sept. 1	" 8	" 15	" 22
Ar. Chicago 7.55 pm. Wed.	" 30	" 7	" 14	" 21	" 28	" 4	" 11	" 18	" 25	" 1	" 8	" 15	" 22
Ar. St. Louis 7.00 am. Thur.	July 1	" 8	" 15	" 22	" 29	" 5	" 12	" 19	" 26	" 2	" 9	" 16	" 23

YELLOWSTONE-GLACIER TOUR	C-1	C-2	C-3	C-4	C-5	C-6	C-7	C-8	C-9	C-10	C-11	C-12	
Lv. Chicago 11.00 pm. Tues.	June 15	June 22	June 29	July 6	July 13	July 20	July 27	Aug. 3	Aug. 10	Aug. 17	Aug. 24	Aug. 31
Lv. St. Louis 2.15 pm. Tues.	" 15	" 22	" 29	" 6	" 13	" 20	" 27	" 3	" 10	" 17	" 24	" 31
Lv. St. Paul 11.00 pm. Wed.	" 16	" 23	" 30	" 7	" 14	" 21	" 28	" 4	" 11	" 18	" 25	Sept. 1
Ar. Cody 7.15 am. Fri.	" 18	" 25	July 2	" 9	" 16	" 23	" 30	" 6	" 13	" 20	" 27	" 3
Ar. Gardiner 7.30 pm. Tues.	" 22	" 29	" 6	" 13	" 20	" 27	Aug. 3	" 10	" 17	" 24	" 31	" 7
Lv. Glacier Park 7.00 am. Thur.	" 24	July 1	" 8	" 15	" 22	" 29	" 5	" 12	" 19	" 26	Sept. 2	" 9
Lv. Glacier Park 9.12 pm. Sun.	" 27	" 4	" 11	" 18	" 25	Aug. 1	" 8	" 15	" 22	" 29	" 5	" 12
Ar. St. Paul 7.30 am. Tues.	" 29	" 6	" 13	" 20	" 27	" 3	" 10	" 17	" 24	" 31	" 7	" 14
Ar. Chicago 7.55 pm. Tues.	" 29	" 6	" 13	" 20	" 27	" 3	" 10	" 17	" 24	" 31	" 7	" 14
Ar. St. Louis 7.00 am. Wed.	" 30	" 7	" 14	" 21	" 28	" 4	" 11	" 18	" 25	Sept. 1	" 8	" 15

YELLOWSTONE-COLORADO TOUR	D-1	D-2	D-3	D-4	D-5	D-6	D-7	D-8	D-9	D-10	D-11	D-12	
Lv. St. Louis 2.15 pm. Sat.	June 19	June 26	July 3	July 10	July 17	July 24	July 31	Aug. 7	Aug. 14	Aug. 21	Aug. 28	Sept. 4
Lv. Chicago 10.35 am. Sun.	" 20	" 27	" 4	" 11	" 18	" 25	Aug. 1	" 8	" 15	" 22	" 29	" 5
Lv. St. Paul 11.00 pm. Sun.	" 20	" 27	" 4	" 11	" 18	" 25	" 1	" 8	" 15	" 22	" 29	" 5
Ar. Gardiner 11.15 am. Tues.	" 22	" 29	" 6	" 13	" 20	" 27	" 3	" 10	" 17	" 24	" 31	" 7
Lv. Cody 8.20 am. Sun.	" 27	July 4	" 11	" 18	" 25	Aug. 1	" 8	" 15	" 22	" 29	Sept. 5	" 12
Ar. Estes Park 11.00 am. Mon.	" 28	" 5	" 12	" 19	" 26	" 2	" 9	" 16	" 23	" 30	" 6	" 13
Ar. Grand Lake 12.30 pm. Tues.	" 29	" 6	" 13	" 20	" 27	" 3	" 10	" 17	" 24	" 31	" 7	" 14
Ar. Denver 4.00 pm. Wed.	" 30	" 7	" 14	" 21	" 28	" 4	" 11	" 18	" 25	Sept. 1	" 8	" 15
Ar. Colo. Sprgs. 7.00 am. Thur.	July 1	" 8	" 15	" 22	" 29	" 5	" 12	" 19	" 26	" 2	" 9	" 16
Ar. Chicago 7.00 am. Sat.	" 3	" 10	" 17	" 24	" 31	" 7	" 14	" 21	" 28	" 4	" 11	" 18
Ar. St. Louis 7.19 am. Sat.	" 3	" 10	" 17	" 24	" 31	" 7	" 14	" 21	" 28	" 4	" 11	" 18

COLORADO-SALT LAKE TOUR	E-1	E-2	E-3	E-4	E-5
Lv. Chicago 11.30 pm. Sat.	July 3	July 17	July 31	Aug. 7	Aug. 14
Lv. St. Louis 9.01 pm. Sat.	" 3	" 17	" 31	" 7	" 14
Ar. Colo. Sprgs. 10.55 am. Mon.	" 5	" 19	Aug. 2	" 9	" 16
Lv. Colo. Sprgs. 9.57 pm. Tues.	" 6	" 20	" 3	" 10	" 17
Ar. Salt Lake 8.30 am. Thur.	" 8	" 22	" 5	" 12	" 19
Lv. Salt Lake 6.00 pm. Thur.	" 8	" 22	" 5	" 12	" 19
Ar. Denver 9.00 pm. Fri.	" 9	" 23	" 6	" 13	" 20
Ar. Idaho Springs 5.00 pm. Sun.	" 11	" 25	" 8	" 15	" 22
Ar. Grand Lake 12.30 pm. Mon.	" 12	" 26	" 9	" 16	" 23
Ar. Estes Park 11.45 am. Tues.	" 13	" 27	" 10	" 17	" 24
Lv. Denver 11.30 pm. Thur.	" 15	" 29	" 12	" 19	" 26
Ar. Chicago 7.00 am. Sat.	" 17	" 31	" 14	" 21	" 28
Ar. St. Louis 7.19 am. Sat.	" 17	" 31	" 14	" 21	" 28

MAIL AND TELEGRAMS

Mail and telegrams for members of these parties should be addressed "c/o Burlington Tours" (A-5, B-6, C-2, D-3, E-4, or any other as the case may be) as shown in the above schedules to these points:

DENVER, COLO., Albany Hotel
 DENVER, COLO., Cosmopolitan Hotel (Tour E)
 MANITOU, COLO., Cliff House
 COLORADO SPRINGS, COLO., Antlers Hotel
 GLACIER PARK, MONT., Glacier Park Hotel
 YELLOWSTONE PARK, WYO., Mammoth Hot Springs Hotel
 or Lodge
 CODY, WYO., Burlington Inn
 ROCKY MOUNTAIN PARK, COLO., Estes Park Chalets



Over the Continental Divide at Berthoud Pass



RESERVATION BLANK

City

Date

Dear Sir:

Parties listed below wish to join Tour _____ at _____

Date _____

Name

Address

City and State

_____	_____	_____
_____	_____	_____
_____	_____	_____
_____	_____	_____

(If more than one passenger, indicate who are to be roomed together and give ages of children, if any.)

Will require Pullman space checked ☒ below:

Lower ☐
Upper ☐

Two in Lower ☐
Section ☐

Compartment ☐
Drawing-Room ☐

If through Yellowstone, via Hotels ☐ Lodges ☐

If Alaska Tour, desire berth on Saloon Deck ☐ Upper Deck ☐

REMARKS: _____

(Sign here) _____

Address _____

Detach and send to any representative shown on back hereof or to J. G. Delaplaine, Manager Burlington Tours, 547 W. Jackson Blvd., Chicago, Ill.



“Burlington Tours” Representatives

CITY	ADDRESS	REPRESENTATIVE AND TITLE	RAILROAD
Atchison, Kan.	Second and Main Sts.	Paul Anderson, Commercial Agent	Burlington Route
Atlanta, Ga.	822 Healey Bldg.	H. R. Todd, General Agent	Burlington Route
Boston, Mass.	294 Washington St.	F. H. Johnson, General Agent	Burlington Route
	294 Washington St.	J. H. Kenney, New England Pass'r Agent	Great Nor. Ry.
	217 Old South Bldg.	C. E. Foster, General Agent Pass'r Dept.	Nor. Pacific Ry.
Buffalo, N. Y.	644 Ellicott Sq.	C. W. Beardsell, Trav. Pass'r Agent	Great Nor. Ry.
	683 Ellicott Sq.	Geo. Eighthy, Jr., Dist. Pass'r Agent	Great Nor. Ry.
Burlington, Iowa	Burlington Bldg.	J. J. Teeter, Div. Pass'r Agent	Burlington Route
Chicago, Ill.	179 W. Jackson St.	J. R. Van Dyke, Gen'l Agent Pass'r Dept.	Burlington Route
	73 E. Jackson St.	M. E. Harlan, Gen'l Agent Pass'r Dept.	Nor. Pacific Ry.
	113 South Clark St.	E. H. Moot, Gen'l Agent Pass'r Dept.	Great Nor. Ry.
Cincinnati, Ohio	104 W. Fourth St.	J. C. Byer, General Agent	Burlington Route
	609 Traction Bldg.	J. H. Brinkman, General Agent	Great Nor. Ry.
	1001 Neave Bldg.	W. C. Hartnett, General Agent	Nor. Pacific Ry.
Cleveland, Ohio	408 Hippodrome Bldg.	E. H. Smith, General Agent	Burlington Route
	708 Hippodrome Bldg.	Willard Adamson, General Agent	Nor. Pacific Ry.
	508 Hippodrome Bldg.	F. L. Cobb, City Pass'r Agent	Great Nor. Ry.
Clinton, Iowa	404 Wilson Bldg.	Wm. Austin, Commercial Agent	Burlington Route
Council Bluffs, Iowa	121 Pearl St.	J. E. Swan, City Pass'r Agent	Burlington Route
Dallas, Texas	701 Kirby Bldg.	C. W. Andrews, General Agent	Burlington Route
	1013 Southwestern Life Bldg.	I. H. Turner, Southwestern Agent	Great Nor. Ry.
	1609 Kirby Bldg.	Chas. Sorg, Jr., Southwestern Agent	Nor. Pacific Ry.
Davenport, Iowa	Foot of Perry St.	M. H. Teed, Pass'r Agent	Burlington Route
Des Moines, Iowa	Sixth and Market Sts.	A. M. Hixson, Commercial Agent	Burlington Route
	216 Equitable Bldg.	R. H. McCurdy, Trav. Pass'r Agent	Nor. Pacific Ry.
	305 Equitable Bldg.	W. M. Romine, District Pass'r Agent	Great Nor. Ry.
Detroit, Mich.	708 Transportation Bldg.	F. C. Board, General Agent	Burlington Route
	619 Transportation Bldg.	E. B. Clark, General Agent	Great Nor. Ry.
	407 Transportation Bldg.	Geo. Barnes, General Agent	Nor. Pacific Ry.
Duluth, Minn.	422 W. Superior St.	W. A. Wilson, Dist. Pass'r Agent	Great Nor. Ry.
	334 W. Superior St.	J. I. Thomas, Dist. Pass'r Agent	Nor. Pacific Ry.
Galesburg, Ill.	Burlington Station	C. I. Twyman, Div. Pass'r Agent	Burlington Route
Hannibal, Mo.	Third and Lyon Sts.	E. L. Speer, Div. Pass'r Agent	Burlington Route
Indianapolis, Ind.	910 Merchants Bank Bldg.	F. L. Gannaway, General Agent	Burlington Route
Jacksonville, Fla.	510 Graham Bldg.	T. H. Harrison, Trav. Pass'r Agent	Burlington Route
Kansas City, Mo.	Seventh and Walnut Sts.	H. S. Jones, Gen'l Agent Pass'r Dept.	Burlington Route
	115 Railway Exchange	F. A. Acker, General Agent	Nor. Pacific Ry.
	516 Railway Exchange	V. E. Jones, Gen'l Agent Pass'r Dept.	Great Nor. Ry.
Keokuk, Iowa	Fifth and Johnson Sts.	A. C. Maxwell, Div. Pass'r Agent	Burlington Route
Leavenworth, Kan.	Fifth and Choctaw Sts.	S. E. Nirdlinger, Commercial Agent	Burlington Route
Lincoln, Neb.	120 N. Thirteenth St.	H. P. Kauffman, City Pass'r Agent	Burlington Route
Milwaukee, Wis.	221 Grand Ave.	F. D. Hunter, General Agent	Burlington Route
	1126 First Wis. Nat'l Bank Bldg.	R. L. Kelly, General Agent	Nor. Pacific Ry.
	810 Majestic Bldg.	E. A. Fradenburgh, General Agent	Great Nor. Ry.
Minneapolis, Minn.	50 S. Sixth St.	J. E. Lynn, City Pass'r Agent	Burlington Route
	522 Second Ave., South	G. F. McNeill, Ass't Gen'l Pass'r Agent	Nor. Pacific Ry.
	524 Second Ave., South	R. C. Michkils, Gen'l Agent Pass'r Dept.	Great Nor. Ry.
New Orleans, La.	708 Common St.	G. B. Magruder, General Agent	Burlington Route
New York City	421 Stewart Bldg.	W. S. Dewey, General Agent	Burlington Route
	280 Broadway	W. F. Mershon, Gen'l Agent Pass'r Dept.	Nor. Pacific Ry.
	516 Longacre Bldg.	M. M. Hubbert, Gen'l Eastern Pass'r Agent	Great Nor. Ry.
Omaha, Neb.	300 S. Sixteenth St.	J. W. Sharpe, Gen'l Agent Pass'r Dept.	Burlington Route
Peoria, Ill.	230 S. Jefferson Ave.	H. D. Page, General Agent	Burlington Route
Philadelphia, Pa.	1420 S. Penn Sq.	H. K. Miles, General Agent	Burlington Route
	401 Finance Bldg.	E. H. Whitlock, Trav. Pass'r Agent	Great Nor. Ry.
	809 Finance Bldg.	B. M. Decker, General Agent	Nor. Pacific Ry.
Pittsburgh, Pa.	504 Park Bldg.	W. V. Taffner, General Agent	Burlington Route
	518 Park Bldg.	W. H. Millard, General Agent	Nor. Pacific Ry.
	214 Empire Bldg.	P. H. Yorke, General Agent	Great Nor. Ry.
Quincy, Ill.	513 Hampshire St.	B. R. Newton, Div. Pass'r Agent	Burlington Route
St. Joseph, Mo.	110 S. Fifth St.	J. D. Baker, Div. Pass'r Agent	Burlington Route
St. Louis, Mo.	208 N. Broadway	C. B. Ozle, Gen'l Agent Pass'r Dept.	Burlington Route
	517 Boatmens Bank	J. M. Sanford, General Agent	Great Nor. Ry.
	411 Olive St.	R. K. Cross, General Agent	Nor. Pacific Ry.
St. Paul, Minn.	228 Railroad Bldg.	B. W. Wilson, Gen'l Agent Pass'r Dept.	Burlington Route
	Railroad Bldg.	M. R. Johnson, City Pass'r Agent	Nor. Pacific Ry.
	4th and Jackson Sts.	A. L. Johnston, City Pass'r Agent	Great Nor. Ry.
Sioux City, Iowa	516 Nebraska St.	P. J. Donohue, General Agent	Great Nor.—Burlington
Superior, Wis.	Tower Ave. and 13th St.	R. F. Willcutts, Ticket Agent	Great Nor.—Nor. Pacific
Toronto, Ont.	202 Webster Bldg.	H. E. Watkins, General Agent	Great Nor. Ry.

J. G. DELAPLAINE, Manager
Burlington Bldg., 547 W. Jackson Blvd.
Chicago, Ill.

