

# America's Playground for Americans

## An Appreciation of Colorado and Utah

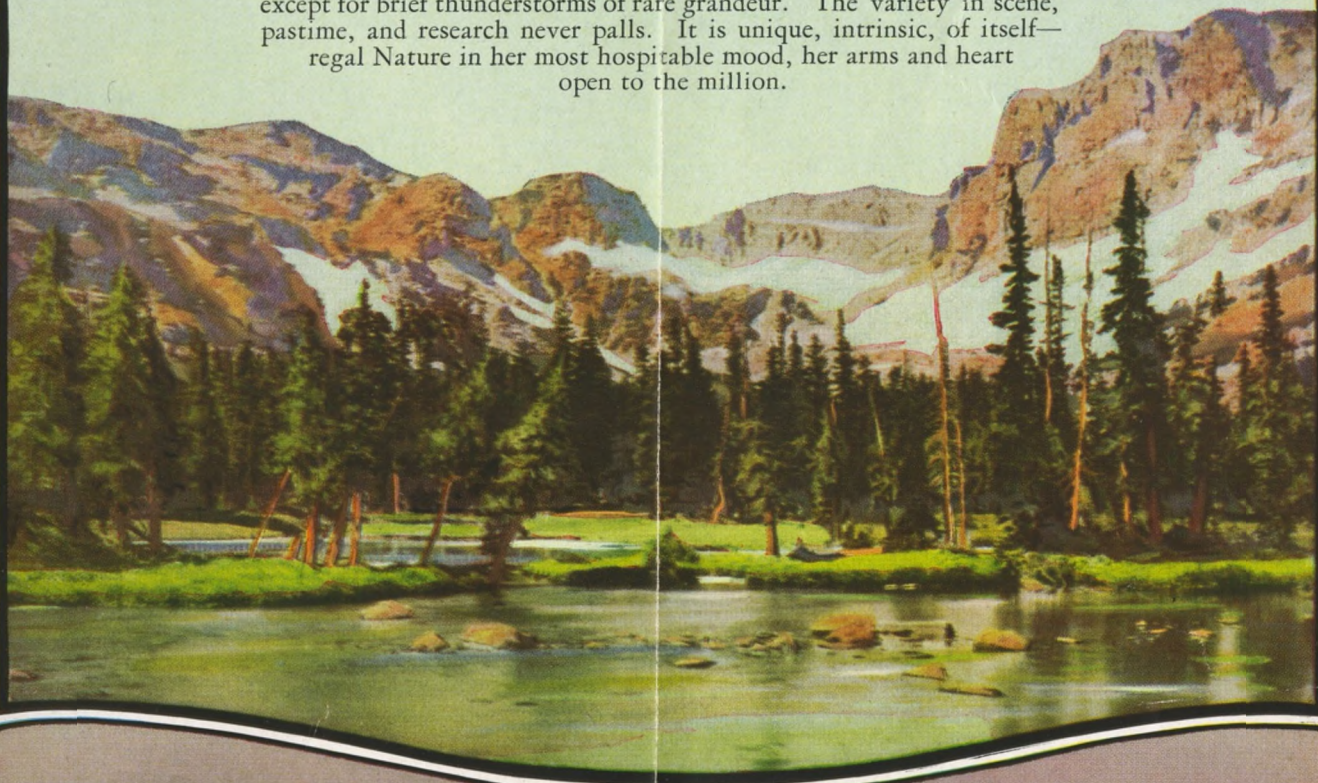
By EDWIN L. SABIN

*Author of "Kit Carson Days," "Buffalo Bill and the Overland Trail," Etc.*

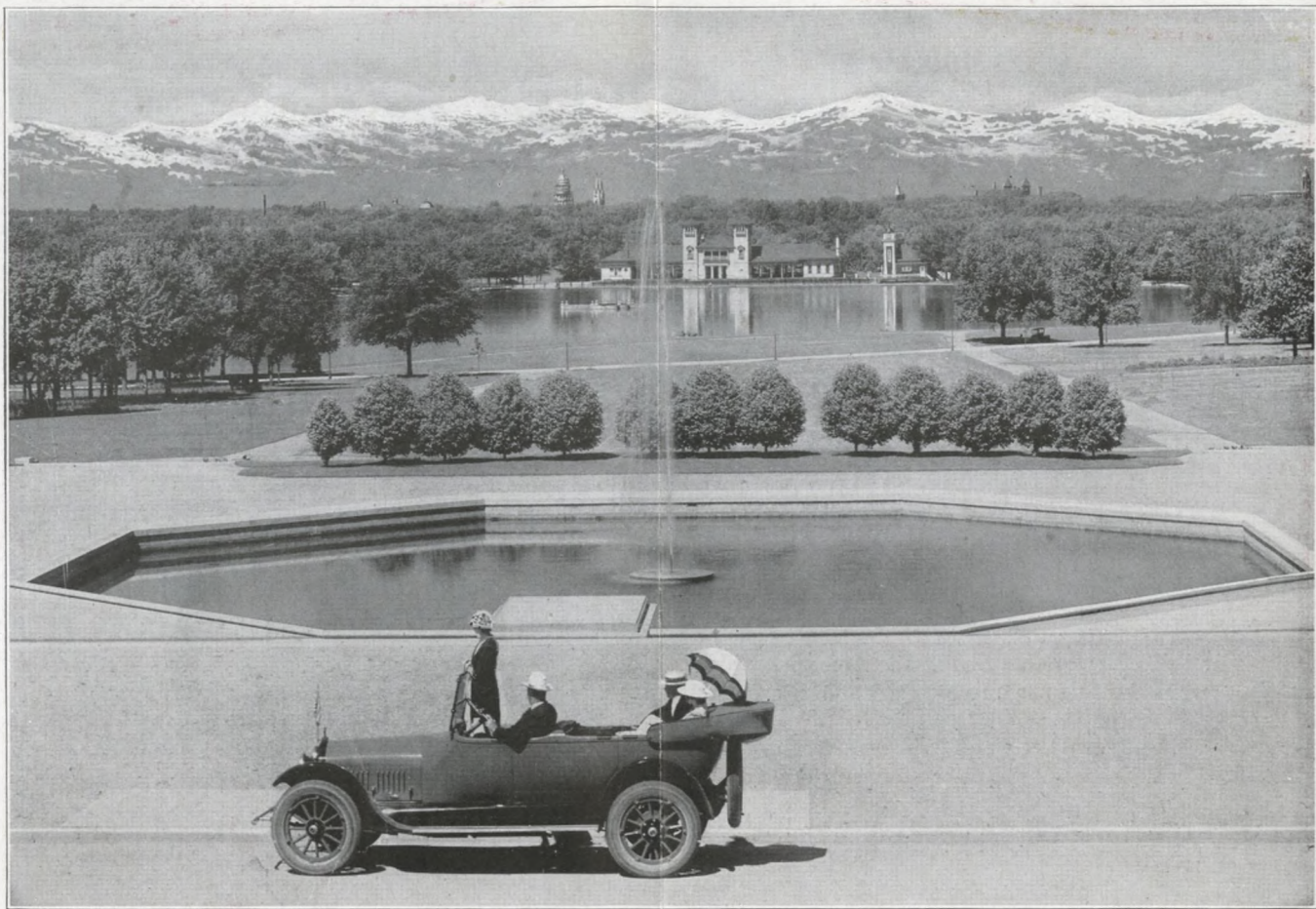
CENTRALLY located between the Missouri River and the Pacific Coast, there lies the greatest playground in the world. Here, occupying the western half of Colorado and two-thirds of Utah adjoining, the Rocky Mountains, enthroned above piny valley and plateau, extend over a space approximately 300 miles wide by 400 miles long.

It is an outdoor region such as no other nation possesses: The deepest canyons in the world traversed by railroads; the highest summits in the world reached by rails; the highest points in the world attained by automobiles; the world's largest Dead Sea, as old as the wonder in Palestine; a colorful, enchanted desert broken by the pinnacles and canyons of the Green and the Colorado; lakes innumerable, outrivaling with their charms a Lucerne and a Constance; watering places uncounted, including the most potent radium springs in the world, and luxurious pools of warm sulphur water with the feel of velvet; ruins that puzzle history, the relics of a forgotten people; two National Parks, six National Monuments, and phenomena of lava, glaciers, and sculptured cliffs; hundreds of miles of granite-surfaced highways, comfortable, safe, and spectacular; a thousand summer hotels, lodges, cottage resorts, and camp sites, catering solely to pleasure; millions of trout in the streams and lakes, wild game, large and small, in their coverts, and bright flowers from meadow up to snow line; 13,000,000 acres of National Forest in Colorado, 7,500,000 acres in Utah, policed, trail-marked, their wood, water, and camp privileges free to the American people.

Its portals are only a night and a day from Chicago. Pullmans and observation cars cross it at elevations of 10,000, 11,000 feet. To its guests awheel, ahorse, or afoot it is kindly. The air is dry, crystalline, invigorating body and mind. The sky throughout Summer and Fall is blue and cloudless, except for brief thunderstorms of rare grandeur. The variety in scene, pastime, and research never palls. It is unique, intrinsic, of itself—regal Nature in her most hospitable mood, her arms and heart open to the million.







*The Towering, Glistening Peaks of the Frontier Range As Seen from Denver's Picturesque City Park*

# VACATIONS IN COLORADO

## DENVER AND VICINITY

In Colorado there are three-hundred mountain peaks that are more than 13,000 feet in altitude—and that is more than all Europe possesses. There are forty-five peaks over 14,000 feet in height.

Denver—a mile high—whose back yard is the Great Plains, and front yard is the Rockies—is the portal of all this mountain playground—gateway to twelve national parks and thirty-two national monuments. The city has developed along lines of civic beauty and is known nation-wide as a genial host experienced in catering to the needs and wishes of the great multitude of visitors who,

every summer, make the city a temporary or permanent headquarter for their vacations in the Rocky Mountains.

Among the numerous and varied attractions of especial note are THE STATE CAPITOL from the gold-encrusted dome of which an inspiring first impression of the whole grand 150-mile mountain panorama may be gained; THE STATE MUSEUM—a beautiful white Colorado marble building of Greek architecture which contains what a noted archaeologist has pronounced the finest collections of cliff-dwelling relics in the world—chiefly from Mesa Verde National Park; THE UNITED STATES



MINT; THE COLORADO MUSEUM OF NATURAL HISTORY—which ranks among the foremost institutions of the sort in the country. Here are gathered together exhibits of the fauna of western America, comprising groups of polar, grizzly, glacier and black bears, groups of moose, Rocky Mountain sheep, caribou, buffalo, antelope, deer, with smaller types and game birds, mineral and fossil specimens of absorbing interest to which the remarkable figure of a quarter-million visitors last year bears convincing testimony; THE NEW CIVIC CENTER—a unique and notable public accomplishment which has for its principal feature a great open-air Greek Theater capable of seating 5,000 people; THE MUNICIPAL

AUDITORIUM—Denver's "Miracle Building," which houses a mighty pipe organ and where 12,000 persons at a time are entertained by the free noon-day concerts which take place daily during the summer.

Aside from its own impressive array of civic attractions, it is a perfectly natural illustration of cause and effect that Denver has assumed a leading place among summer resort centers of our country, for from this great city of 282 hotels which can accommodate 50,000 guests at a time, radiate foot and bridle trails, steam and electric railways, and scores of splendid motor highways which lead out in every direction to the great wonderland of the mountains.



*Bear Creek Canyon from Echo Lake Road—the Way to Troutdale-in-the-Pines*





*In the Mountain Parks—Less Than Two Hours by Motor from Denver*

### Denver's Mountain Parks

So near at hand as to be reached by automobile within an hour's time are the famous Denver Mountain Parks served by a splendid boulevard starting at the charming little city of Golden, seat of the Colorado State School of Mines and territorial capital, and encircling the entire park system by way of the Lariat Trail, Double Hairpin Curve, Clear Creek Canyon, Summit of Lookout Mountain where lies the body of the late Col. Wm. F. Cody, better known and loved by the youth of the land as "Buffalo Bill," Genesee Park, Bergen Park, Troutdale, Bear Creek Canyon, Park of the Red Rocks and Morrison

Four

—a delightful sixty-five-mile mountain motor ride which may be completed in a few hours and taken again another day with just as keen enjoyment.

### Platte Canyon

The Canyon of the Platte River, through which the Colorado & Southern Ry. wends a picturesque way, is among the best known of Colorado's plenteous resort regions. Between Denver and Grant—a distance of sixty-six miles—there are some thirty inviting mountain resorts, including Strontia Springs, South Platte, Fox-ton, Buffalo Park, Pine Grove, Insmont, Bailey, Glenisle,





*The Georgetown Loop—a Railroad Coil—Is a Wonderful Feat of Engineering*

Shawnee and Cassell's. Here are attractive hotels and numerous furnished cottages which may be rented by the week or month. From these cool retreats the opportunities for horseback riding and long or short expeditions afoot into the mountains are unexcelled and the region is widely known for the fine trout fishing.

### **The Georgetown Loop** (via C. & S. Ry.)

One of the most interesting one-day trips in Colorado. The route leads through the foothills, and soon after passing Golden enters wonderful Clear Creek Canyon which it follows for many miles close beside the rushing

little mountain stream in which placer miners washed gold in little shallow pans many years ago, past the foot trail which leads to the summit of Genesee Mountain, and so to Idaho Springs—where mining operations are yet conducted on an extensive scale. Here too, are well-known hot springs of radio-active mineral waters and excellent facilities wherewith to utilize them. The Hot Springs Hotel is open the year 'round and has every modern convenience. Hot mineral baths are given in tunnel caves and are accessible without leaving the hotel. Next comes Georgetown—a well-known mining town—and from this point westward, the trip reaches its grand climax in the ascent to Silver Plume over the world-famous





*Yankee Doodle Lake on the Moffat Road. It Is 10,000 Feet Above Sea Level and Nobody Knows How Deep*

Loop—a triumph of engineering skill. Some idea of the devious way in which the railroad negotiates the climb may be gained from the statement that by road the distance is one mile—by railway four and one-tenth miles.

There is an excellent lunch station at Silver Plume and, before starting back to Denver, ample time is available in which to visit some of the noted mines near by.

### **The Moffat Road Trip to the Top o' the World**

The marvels of modern engineering, together with the wonders which Nature has provided, combine to make

this trip a memorable experience wherein the wild, rugged beauty of Rocky Mountain landscape is superbly portrayed. As the train climbs higher and higher and the field of vision widens, the inspiring panorama grows sublime in its immensity and, when the train in an astonishing series of loops and curves reaches Corona on the Continental Divide—up where the snows of winter endure until winter comes again—a true conception of the glory of Colorado is yours, for you are at the highest point in the United States reached by a standard-gauge railroad.



## ROCKY MOUNTAIN NATIONAL (ESTES) PARK

"A marvelous grouping of gentleness and grandeur; a wilderness mountain world of groves and grass plots, crags and canyons, rounded lakes with shadow-matted shores that rest in peace within the purple forest. There are wild flowers of every color, and many a silken meadow edged with ferns. Brokenness and beauty, terrace upon terrace, a magnificent hanging wild garden.

"Over these terraces waters rush and pour. From ice-sculptured, snow-piled peaks, young and eager streams leap in white cascades between crowding cliffs and pines.

"Through this wildness winds the trail, with its secrets of the centuries, where adventures come and go and where the magic camp fire blossoms in the night.

"The Rocky Mountain National Park holds adventure for every visitor. In it the world is new and wild, and on the imagination it produces the explorer's stirring joys. Its mile-high, unfenced scenes give freedom—splendid landscapes of the ideal world."—*Enos Mills*.

The magnetic lure of this beautiful section of the "Sky-land State" is graphically attested by the fact that,



*Ouzel Lake in Wild Basin—Rocky Mountain National Park*





*Beautiful Bear Lake—Near the Timber Line in Rocky Mountain National Park*

although it is among the newest of America's national parks, more visitors have entered its portals in a single year than those of any other national playground, the remarkable total of 225,000 having been attained in each of two successive seasons. This is the complete playland, where your cherished dreams of that ideal vacation are likely to come true, as they have for these others who in increasing thousands have made Rocky Mountain National Park a veritable mecca for summer vacationists from every nook and corner of our land.

For here is a form of vacation activity to suit every taste—horseback riding, trout fishing, motoring, boat-

ing, golf, tennis, walking trips without number—from short two or three-hour hikes to near-by points all the way to the thrilling conquest of majestic Longs Peak itself—to say naught of just loafing through lazy, carefree days in the clean, health-giving, sun-shot atmosphere of Colorado's high places.

Scattered throughout the Park are scores of places of accommodation. You can rent a tent-cottage or a comfortable log cabin by the week or the month. You have a wide choice of inviting rustic inns and lodges which occupy vantage points ranging from cool, flower-carpeted valleys way up to dizzy alpine heights; or, if you



prefer, stay at one of the fine big hotels which are comparable in every respect to the highest type of metropolitan hostelry.

The Park is reached by motors of the Rocky Mountain Parks Transportation Co. operating on regular schedules from the rail gateways, Longmont, Lyons, Loveland and Ft. Collins—delightful little places offering every facility for an unusual vacation in the Rockies with the added advantage of urban accommodations.

The route from Longmont and Lyons to Rocky Mountain National Park is via motor through either the North or South canyons of the St. Vrain River; from Loveland and Ft. Collins through the great Canyon of the Big Thompson, all routes converging at the village of Estes Park.

Rocky Mountain National-Estes Park is a regular destination for summer excursion tickets which are on sale at railroad offices in every part of the Middle West, the South, the East, Southeast and Southwest at rates \$10.50 higher than the round-trip summer fare to Denver.

Tickets are routed via Denver, thence C. B. & Q. R. R. or Colorado & Southern Ry. to the gateways mentioned and Rocky Mountain Parks Transportation Co. (automobile) beyond, and are honored via any of the rail gateways or in the automobiles of the Rocky Mountain Parks Transportation Co. for the entire trip between Denver and the Park. You can go one route and return another—part rail and part motor with choice of routes, or all motor, in either direction, according to your wishes at the time.



*Grand Lake, Colo., the Highest Anchorage in the World*





*Horseback Trails Lead Up to Alpine Lakes of Rarest Charm*

### Grand Lake Circle Tour

An automobile tour, which is regarded by many as without parallel in this country, is that which takes you from Denver to Rocky Mountain National-Estes Park (via either the North or South St. Vrain Route, or the Big Thompson Canyon Route), thence by way of Horseshoe Park, the Fall River Road over the Continental Divide and Milner Pass to Grand Lake; returning through the Arapahoe National Forest, Berthoud Pass, Georgetown Loop Region, Pike National Forest, Idaho Hot Springs, Clear Creek Canyon, Lookout Mountain and the Moun-

tain Parks to Denver—a thrilling mountain motor trip of 236 miles, during which one phase of mountain grandeur follows another in a surprising succession of marvelous scenic viewpoints.

It may be accomplished with perfect comfort and without haste in two days, although full stop-over privileges are accorded in the Park or anywhere en route as desired.

Tickets with Grand Lake, Colorado, destination, routed "Burlington" to Denver and motor beyond, embracing the entire Circle Tour, are available at principal railroad ticket offices at \$25.50 more than the summer excursion fare to Denver.



## THE COLORADO SPRINGS-PIKES PEAK REGION

This famous sector of the Rockies, in which is combined an almost bewildering array of vacation allurements with highly developed facilities wherewith to visit and enjoy them conveniently and in perfect comfort, may usually be included in any trip to Colorado without extra transportation cost since in most instances the summer excursion fare to Denver also applies to Colorado Springs.

Pikes Peak, the Seven Falls, North and South Cheyenne Canyons, Cave of the Winds, Crystal Park, Garden of the Gods, Williams Canyon, Ute Pass, Cripple Creek, Corley Mountain Highway and Manitou are names which many will recognize because they are known everywhere.

With beautiful Colorado Springs, "City of Sunshine," as a base of operations, a well-nigh inexhaustible succession of mountain trips is possible. One may breakfast in metropolitan fashion in one of the great hotels than which no city boasts finer, and within two hours' time engage in a skirmish with snowballs for ammunition—atop Pikes Peak—14,109 feet high—up above the clouds—the great mountain world spread out below. By the world-famous Cog Railway the summit is attained in a ride during which the dense wilderness gives way to thinner and yet more sparse growth until in fact vegetation ceases to be and you reach the realm of perpetual snow.



*This Is Just the Edge of Colorado Springs—Pikes Peak in the Distance*





*Approaching Timber Line. Pikes Peak Cog Road*

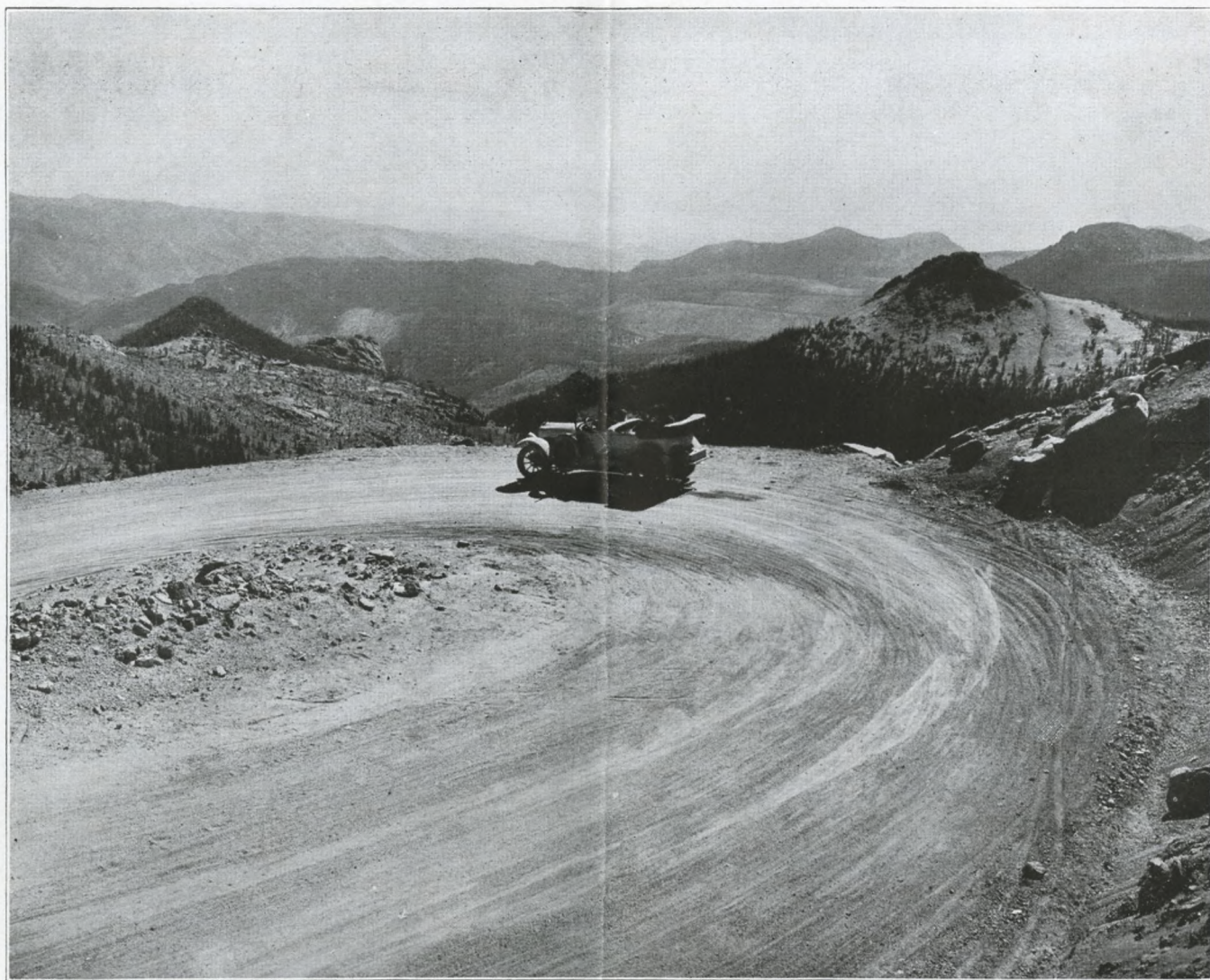
Or, if you prefer, view all this from the seat of the comfortable touring cars of the Pikes Peak Auto Highway Co.—and recalling that Zebulon Pike, discoverer of the famous peak, declared its summit impossible of attainment, marvel at what man has done to bring it about—for your enjoyment and edification.

Many years ago, the radio-active waters of the mineral springs of Manitou brought renown to the little community of that name which nestles at the foot of the big mountain—a few minutes' ride by motor or trolley from Colorado Springs. Here the warring Utes and Arapahoes brought their ailing to be made well by the Great Spirit acting through the magic waters of the iron, sulphur and

soda springs. The efficacy of the waters became well known and highly held by the whites, so that in greater and greater numbers they have come to Manitou. Now there is a half-million-dollar bathhouse at the springs and the little city is the center of a celebrated resort region with everything to commend it to the visitors from "outside," come to Colorado for rest, for play—from the things which pull them down to the things which build them up.

It is ten minutes' walk from Manitou Springs to the cliff dwellings. These are not to be mistaken for the original abode of the prehistoric race which peopled the southwestern portion of the "Colorful Red Land," but





*Around the Mountain Top—Pikes Peak Auto Highway*

are very faithful reproductions of the originals constructed with painstaking care and attention to detail.

Just five miles from Colorado Springs lies Stratton Park—entrance to North Cheyenne Canyon and South Cheyenne Canyon—two mighty chasms more than a thousand feet deep, of varying width and many miles long, through which splendid motor roads wind an enchanting way. You'll want to drive or stroll through South Cheyenne Canyon up to the remarkably beautiful Seven Falls, and through North Cheyenne Canyon where Nature's wonders are displayed on an even more gigantic scale.

And you will be sure, no doubt, to make the drive to

the summit of Cheyenne Mountain over the new Broadmoor-Cheyenne Mountain Highway—a spectacular two-hour motor trip with a thrill around every curve in the road, and curves there are aplenty.

Another intensely interesting trip is through lovely Williams Canyon and over the zigzag Temple Drive to one of Colorado's geological miracles—"The Cave of the Winds." This immense underground cavern consists of a series of rooms whose names—Majestic Hall, Curiosity Shop, Crystal Palace, Gypsum Alcove, Canopy Hall and Diamond Hall—give promise of the remarkable sights which await your wondering gaze.



## THE BOULDER REGION, THE GLACIERS AND COLORADO NATIONAL FOREST

Twenty-nine miles northwest from Denver, and reached by steam and electric lines, lies Boulder—key-city to the glacier region in the Colorado National Forest.

Seat of the State University, the Colorado Sanitarium, Blue Bird Cottage, and the Colorado Chautauqua (held throughout July and August), Boulder needs no introduction, as a beauty spot, a resort region, and enterprising city of about 15,000 people. Suffice it to say that year by year the city at the mouth of lovely Boulder Canyon finds itself host to greatly increasing numbers of visitors who make it the focal point for numerous and varied long and short expeditions into one of the most inviting sections of the state.

Westward is the great Colorado National Forest—a veritable mountain world of rugged ranges, towering

peaks, glacial lakes and streams, hundreds of square miles of virgin forest—a wonderland of canyons, gorges, crags and plunging cataracts in countless numbers.

Throughout the entire region runs a network of motor roads—through the great pine forest and alongside tumbling streams, to scores of seemingly inaccessible heights and to many woodland and alpine resort places—Eldorado Springs, Eckels, Boulder Falls, Nederland, Glacier Lake, Ward, Stapps Lakes, Peaceful Valley, Raymonds, Wills, Allens Park, Copeland Lake—indeed to the very foot of Longs Peak itself in Rocky Mountain National Park, places where one may go and take his family for a week, a month, or a whole summer, to rest while recreating at the shore of a blue-green lake at the foot or mayhap high up in the side of a towering mountain.



*Arapahoe Glacier—the Largest in Colorado—and Arapahoe Peak. Its Summit Is 13,506 Feet Above Sea Level*





*In the Colorado National Forest*

Westward a few miles lie the famous Colorado Glaciers—great, living, moving ice fields high up near the pinnacle of the foreboding peaks of the Continental Divide, twelve, thirteen, fourteen thousand feet above sea level. These mysterious phenomena, hundreds of years old, starting up in regions of perpetual snow, are the source of countless streams of icy water which race down the slopes, plunging from ledge to ledge in feathery falls, here and there filling brim-full gouged-out basins, forming lovely lakes, to finally join a larger stream and go rushing on to the sea.

There is daily automobile service during the summer provided by the Glacier Motor Route from Boulder to all

this remarkable region, and ample facilities at various strategic points for horseback expeditions to the glaciers.

The region is readily accessible from Denver via Colorado & Southern Ry. to Boulder as well as via the Denver & Interurban Ry. (electric line) which provides practically hourly service between these points during the summer. Round-trip combination rail-and-motor transportation to this resort region may be included in summer excursion tickets at original starting point or added at Denver.

For detailed information and descriptive literature, address H. A. Johnson, Traffic Manager, Colorado & Southern Ry., Denver.



## CACHE LA POUDRE CANYON

The Cache La Poudre Canyon is accessible from Ft. Collins, from which stage lines and special automobiles are available. The canyon extends from the foothills northwest of Ft. Collins west to the Continental Divide—seventy-five miles through the Colorado National Forest, and is traversed by a beautiful highway which has been cut through the canyon to Cameron Pass. Here, the road drops into North Park and Walden, where it connects with the Rocky Mountain Highway. Cameron Pass is one of the lowest passages across the Continental Divide, having an elevation of 10,000 feet.

There are numerous hotels and resorts along the highway, where every type of accommodation is available and from which numerous pleasant and interesting side trips may be taken.

The scenery in this colorful canyon is not surpassed by any in the United States. From gently sloping canyon sides, the road passes into rough and rugged canyon walls, tunneling through the gorge and finally attaining the higher open country from where awe-inspiring views of snow-capped mountains may be had.

Ft. Collins is the center of newly discovered oil fields, which promise to be among the greatest in the country.



*Looking Down Cache La Poudre Canyon from Bennett Creek—Colorado National Forest*





*A Bit of the Cliff Dwellings in Mesa Verde*

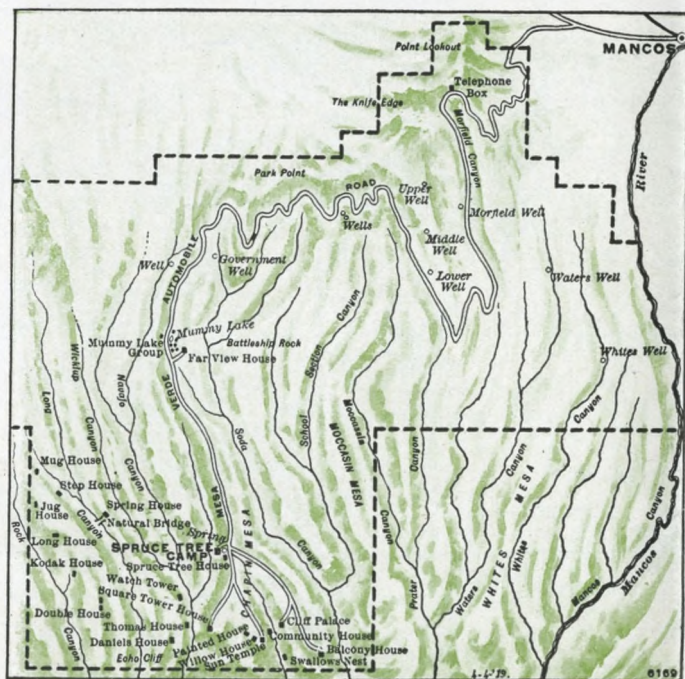
## MESA VERDE NATIONAL PARK

From the town of Mancos, Colo., a three-hour automobile ride, over a fine highway, bridges the centuries back to a remote time when what is now Southwestern Colorado was the seat of a strange prehistoric civilization whose abode—the amazing cliff dwellings of Mesa Verde—is now accessible and annually visited by increasing thousands of wondering moderns.

The mystery of a long-forgotten race, which seems to have possessed no written language but whose remarkable habitations bear unmistakable evidence of attainments of no mean order, challenges the imagination.

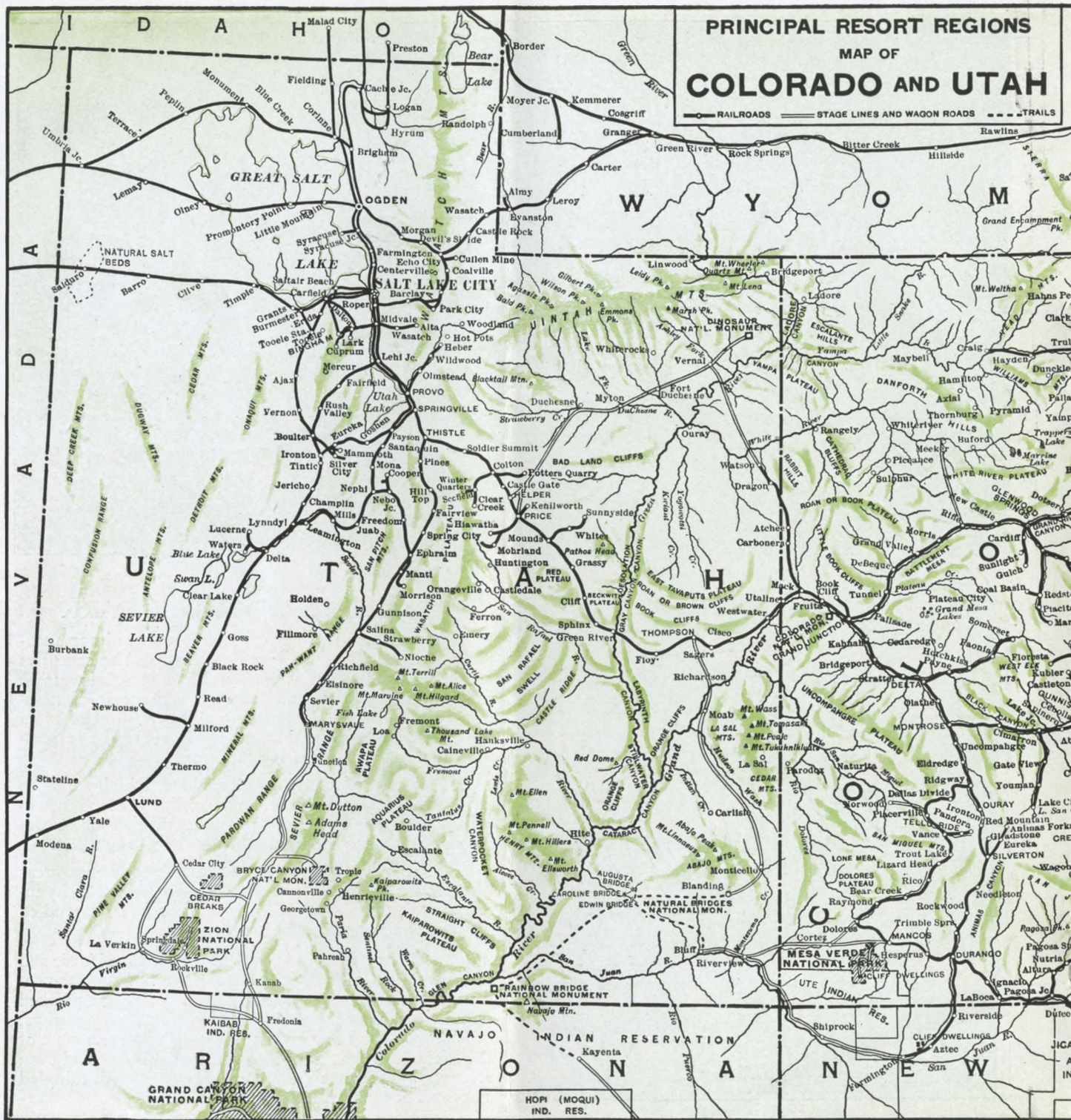
Here in our own country—in Colorado—and at no great distance from big modern cities—is one of the most interesting pages from the Book of Time to be read, studied and pondered by those who will.

Some of the cliff dwellings, like Spruce Tree House and the marvelous Cliff Palace, are tucked away under protecting rock shelves in sheer canyon walls and reached only by means of ladders or narrow secret passageways; others, like Far View House, are built upon the crest of the Mesa. All are strange—incomprehensible—and even after many visits are viewed and explored with mingled emotions of wonder and surprise.

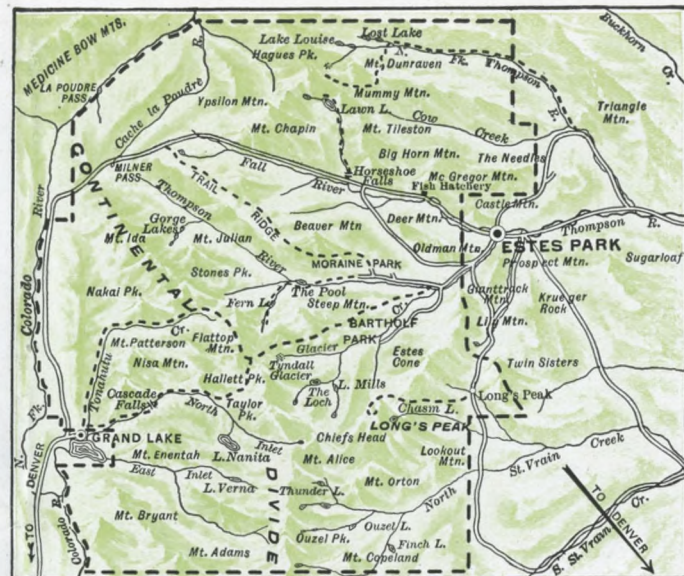


*Mesa Verde National Park*

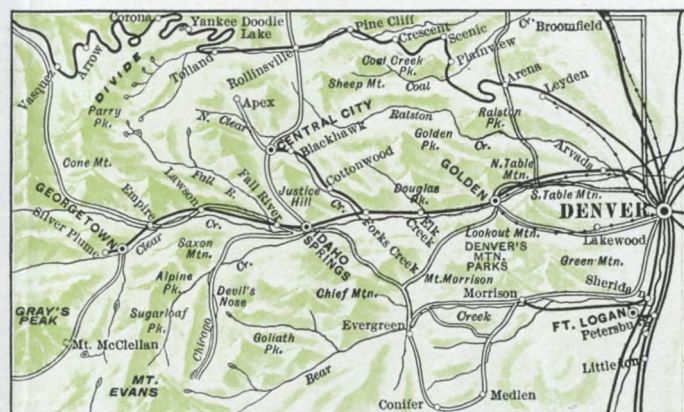




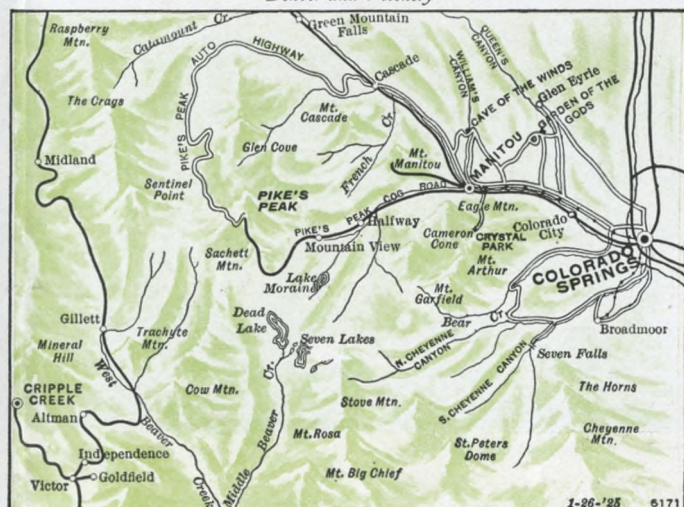




Rocky Mountain National Park



Denver and Vicinity



Pikes Peak District



## GREAT CIRCLE TRIP

A thousand-mile journey via rail (D. & R. G. W. R. R.) starting at Denver, Colorado Springs or Pueblo and embracing The Royal Gorge, Marshall Pass, where from an altitude of nearly 11,000 feet an unparalleled view is had of the great Collegiate Range and the Sangre de Cristo Range; through Gunnison, rendezvous of the National Forest of the same name; through the sixteen-mile Black Canyon of the Gunnison—Chipeta Falls to the right, Curecanti Needle to the left—through Montrose with the Sneffles Range ahead, the jagged Sawtooth Range to the left and the serrated tops of the Uncompahgre Mountains to the east. An overnight stop is made at Telluride which is an important gold mining town, and the journey resumed the next day via Cathedral Spires, Trout Lake, Lizard Head Pass and Lost Canyon to Mancos, whence the trip to Mesa Verde is made by automobile.

The return half of the Great Circle Trip leads through Durango, metropolis of Southwestern Colorado where

an overnight stop is made, after which the journey is continued via the Southern Ute Indian Reservation, the Jicarilla Apache Indian Agency at Dulce in New Mexico and up the great Cumbres Divide where the track grade is 225 feet per mile; via Toltec Gorge and the Los Pinos Canyon; via Antonito, La Jara, Alamosa, through a region of transcendent mountain grandeur. Sierra Blanca (altitude 14,390 feet) remains in full view from Alamosa to La Veta Pass where the route turns northward to Pueblo, Colorado Springs and Denver.

The swing around the Great Circle is a never-to-be-forgotten presentation of mountain magnificence unsurpassed.

During the summer, round-trip excursion tickets for the Great Circle Trip are on sale at D. & R. G. W. R. R. ticket offices in Denver, Colorado Springs and Pueblo or coupons to cover may be included in summer tourist tickets when purchased at original starting point.



*Ouray, Colo.—A Gem in a Mountain Amphitheatre*





*The Royal Gorge—One of the Mightiest Chasms in the World*

## THE ROYAL GORGE

*—without which Colorado would not be Colorado*

This colossal canyon carved through the centuries by the turbulent Arkansas River is situated near Canon City, Colo.—two hours' ride on the D. & R. G. W. Ry., west from Pueblo, Colo., and must always be counted one of Nature's wondrous masterpieces. Through the ten-mile canyon whose sides at the Gorge tower aloft nearly 3,000 feet, the railroad by a marvel of engineering enterprise has constructed a steel highway renowned the world over.

At one point, where the width of the roaring river is but a scant dozen yards, it was necessary to evolve and construct the famous Hanging Bridge as the only feasible "way through" for trains.

One of the most remarkable motor highways in America—the famous Skyline Drive—leads from Canon City to a point opposite the Gorge and a half mile above it where





*Glenwood Springs, in the Grand River Valley, Is One of the Best-Known Summer Resort Cities of the West*

the view into the depths of the mighty chasm is truly magnificent.

### **PUEBLO**

the second city in size in the state—and called the “Pittsburgh of the West” because of its vast smelting and steel works. It is distinguished because of mineral springs of radio-active waters situated right in the heart of the city, and is the gateway to the San Isabel National Forest to which tours of varying duration are operated throughout the summer by the San Isabel Forest Tours Co.

***To treat even briefly of all of Colorado's lovely vacation places would require hundreds of pages and result in a volume which would seem a catalog of all that is most desirable in recreation haunts***

### **GLENWOOD SPRINGS**

where the Canyon of the Grand River widens to form a lovely valley flanked by painted mountains. Here the remarkable hot sulphur springs have been modernized with an immense outdoor pool and extensive bathing pavilions which, taken with splendid hotel facilities and the opportunities for well-nigh every form of out-in-the-open activity, including varied excursions into the nearby mountains, combine to make of Glenwood a popular rendezvous of care-free summer visitors.





*Temple Square in Salt Lake City*

## UTAH—"The Promised Land"

Although little known aside from the beaten paths, Utah holds numerous attractions which merit a prominent place in the front rank of America's vast playgrounds.

The natural bridges in the southeastern portion—the result of remarkable and eccentric stream erosion—are among the largest known, and the region, which embraces, too, many prehistoric ruins, has been set aside as a National Monument.

Beyond—in the Reservation of the Navajo Indian Nation—is the greatest natural bridge of all, called THE RAINBOW BRIDGE because its 279-foot span is a great symmetrical arch resembling a rainbow. This is also a National Monument.

In the northeastern part of the state is the Dinosaur National Monument comprising an extraordinary deposit of dinosaurian and other gigantic reptilian fossil remains which are of incalculable scientific interest and value.



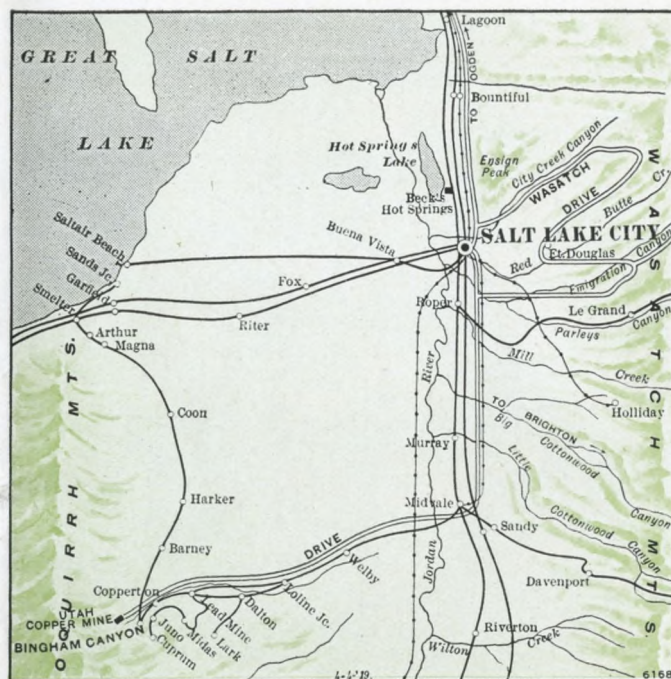
## SALT LAKE CITY

is unique among the great cities of America and is one of the most interesting places in the world. A premier attraction will always be the Temple Square wherein stand the Mormon Tabernacle, Temple and Assembly Hall.

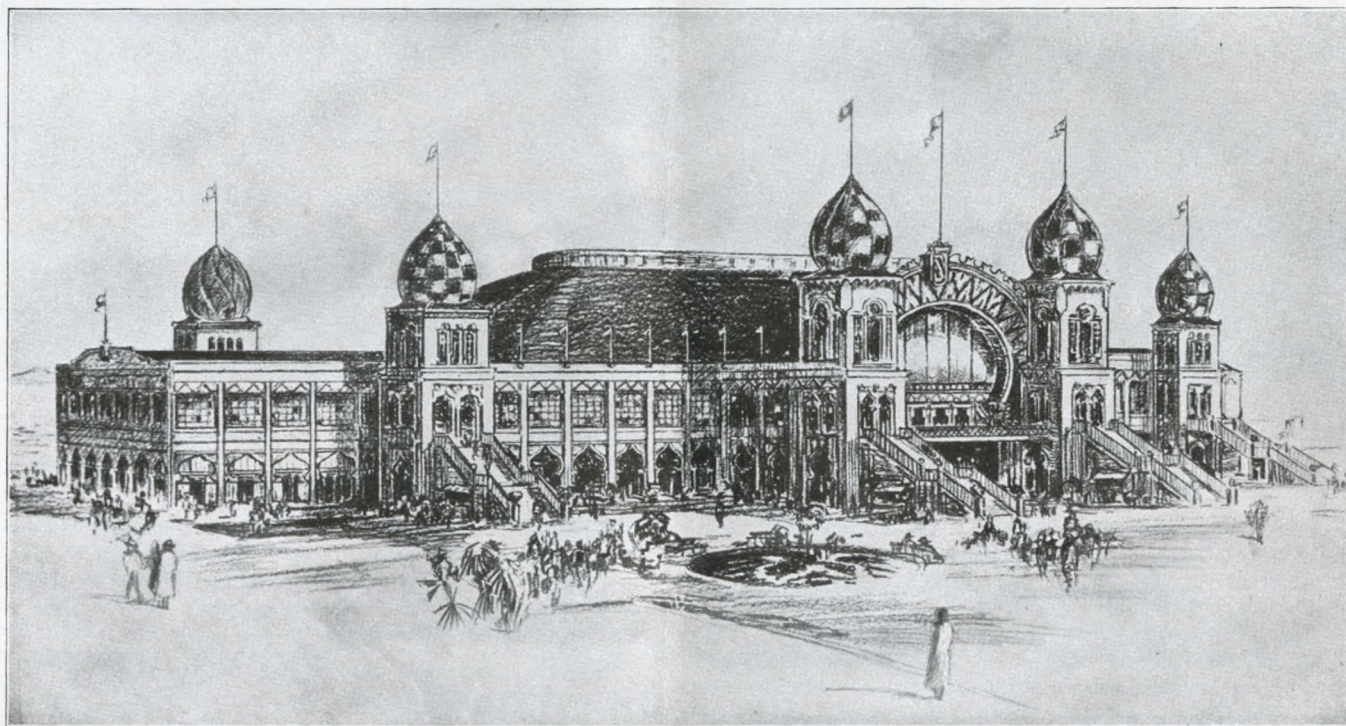
The Tabernacle is a marvel of architectural ingenuity and construction skill—built mainly of wood and quite devoid of posts or pillars. The timbers of the great domed roof are secured by rawhide thongs, and wooden pegs were largely used instead of nails. The wonderful acoustics of this great hall are the marvel of the thousands who visit it. A mere whisper at the organ bench is audible in every part of the auditorium which seats 8,000 people.

The Tabernacle houses one of the largest and probably the most widely known pipe organ in the world. Free public concerts are given at noon daily throughout the summer.

Reached quickly and comfortably by short side trips from Salt Lake City are numerous beauty spots and places of great historic interest, among which are Big Cottonwood Canyon, Parley's Canyon, Bingham Canyon and the Copper Mines, Little Cottonwood Canyon and Emigration Canyon through which the Mormon pioneers first glimpsed the Great Salt Lake Valley.

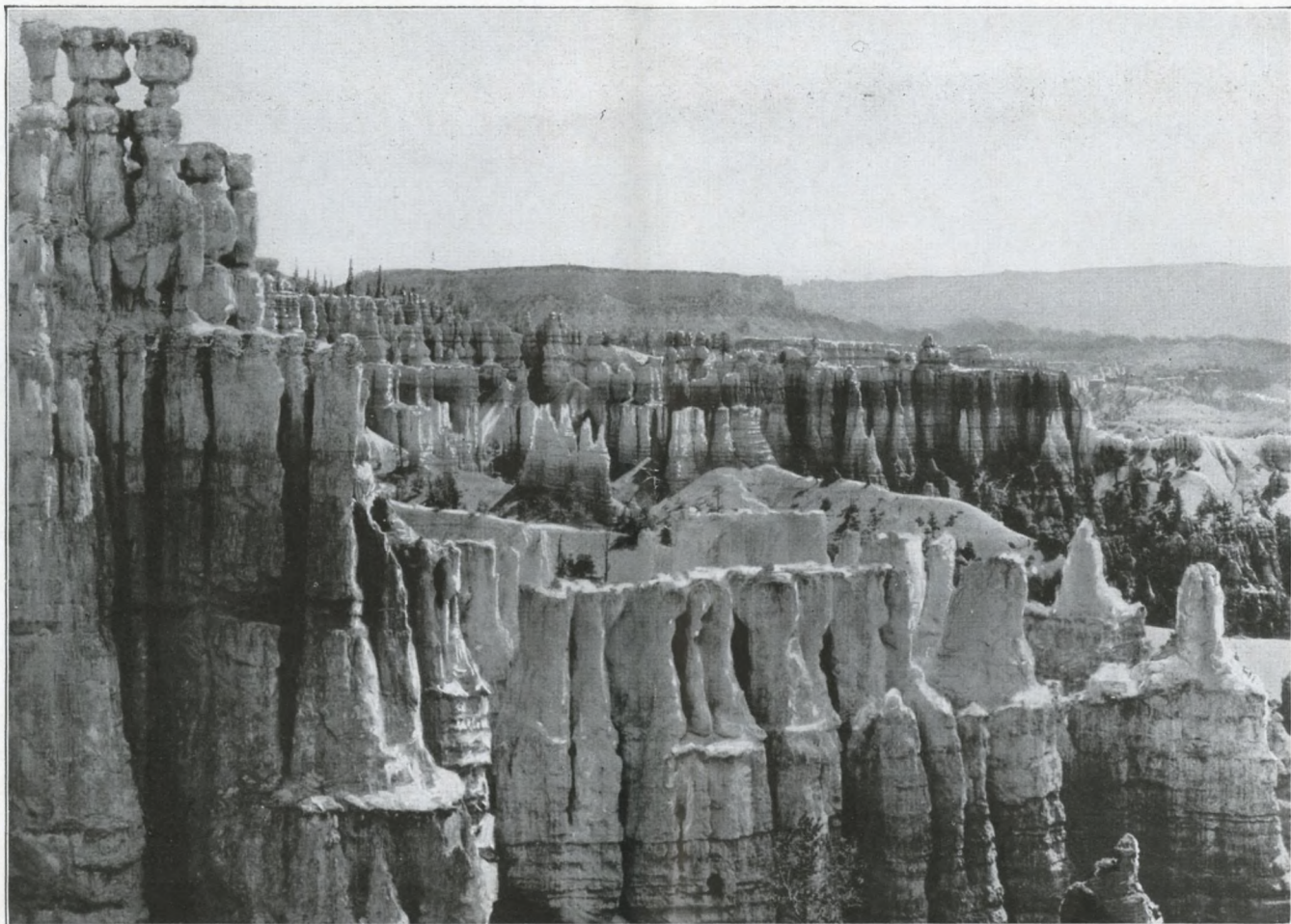


*Salt Lake City and Vicinity*



*The New Moorish Pavilion at Saltair*





*Bryce Canyon—A Great Scenic Attraction*

## **GREAT SALT LAKE**

Finally there is the great desert lake whose waters are so salty (twenty-two per cent) that no animal life can exist in them, and so buoyant that persons without any experience in swimming need not hesitate to take a dip. You couldn't sink if you tried. Bathing in Great Salt Lake is a novel and interesting adventure worth trying and repeating.

## **SALTAIR**

At the edge of the lake is Saltair Beach with its mammoth bathing pavilion and pier extending more than a quarter-mile into the lake to end in a great new ballroom.

## **BIRD ISLAND**

Motor boats make frequent trips from Saltair to Bird Island where countless sea gulls, pelicans and cranes have established a rookery. This is a favorite trip of thousands

of summer visitors and the unusual spectacle of thousands of birds gathered together in the small area is of unfailing interest, especially when we consider that to obtain food the winged residents of the island must fly to the mainland—forty miles distant.

## **BRYCE CANYON**

This three-mile-long by two-mile-wide and 1,000-feet-deep "box" canyon, situated in the "Pink Mountain" section of the Sevier National Forest, near Tropic, Utah (286 miles south of Salt Lake City), is best reached by motor-stage from Marysville. Comprising fifteen square miles of erosional forms, carved by the hand of Fate into every conceivable form and shape and tinted by the brush of Time into every color imaginable, this unmatched canyon seems destined to become one of the wonder spots of western America.





*The "Great White Throne"—Zion National Park*

## ZION NATIONAL PARK

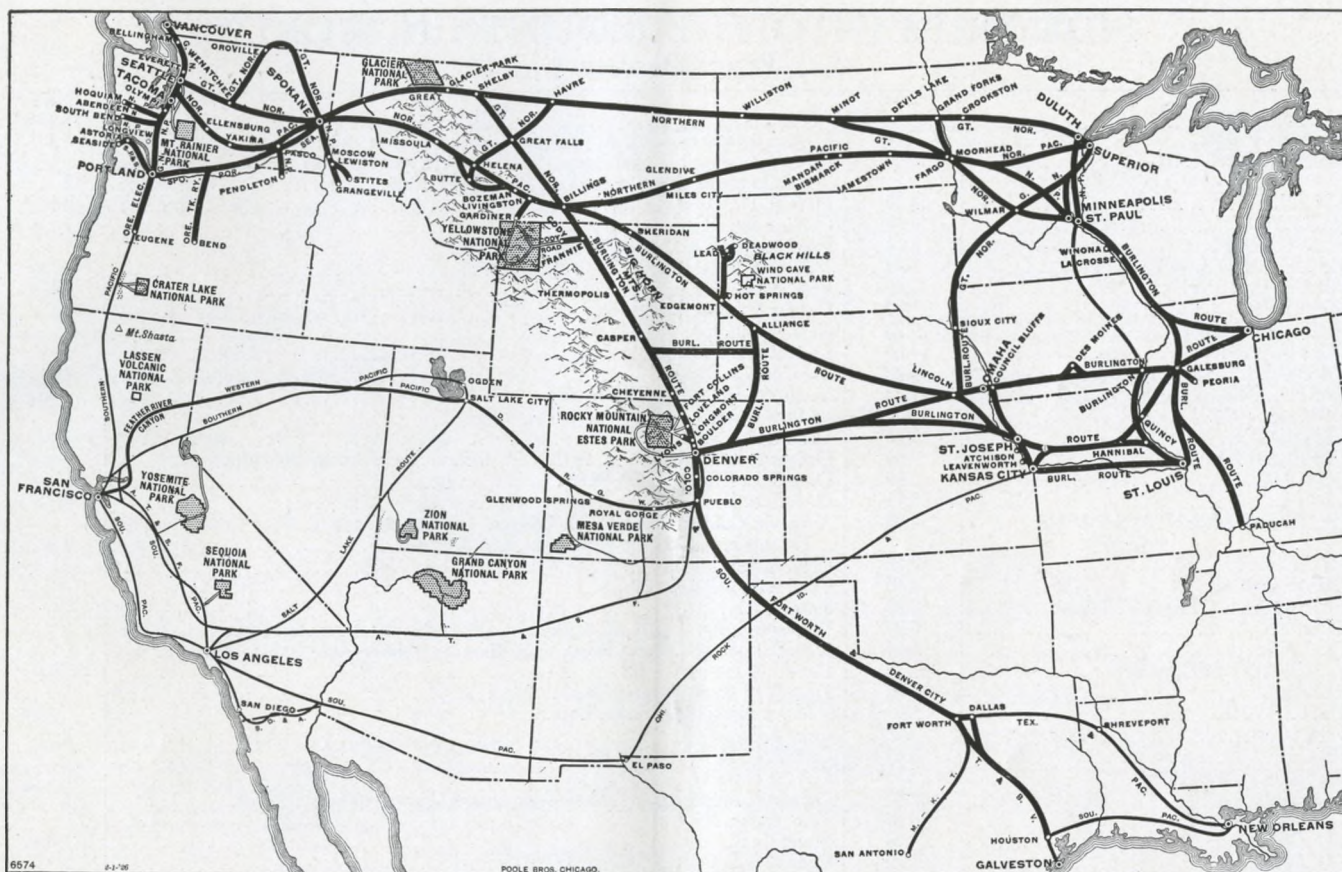
Zion National Park comprises 120 square miles of marvelous canyons and mountain scenery in the "painted terrace" country in Southwestern Utah, and because of the gorgeously tinted rock formations is sometimes called "The Rainbow of the Desert."

The canyon walls are smooth, vertical sandstone escarpments, from 800 to 2,000 feet high, between which flows the north fork of the Virgin River, and in the consecutive strata of these walls the history of ages is recorded. Upon the faces of many of these gigantic cliffs Nature has established an art gallery of stupendous proportions, for

here are carved figures and forms of varied character and remarkable color contrast.

The Park may be reached from the railroad station of Cedar City, a good automobile road leading to the portals of the canyon; and, beyond, the Government has added a road passing into the very heart of this wonderland, thus placing a new scenic paradise within easy reach. Ten-passenger motor-stages operate over the hundred-mile stretch between Cedar City and the Utah Parks Company Camp in the valley of Zion. Season, May 15 to September 1.





## THE MAP SHOWS—

how directly the main lines of the BURLINGTON ROUTE lead to Colorado from Chicago, St. Louis, Peoria, Omaha, Kansas City and St. Joseph.

It shows, too, how well the BURLINGTON may be utilized in combining Colorado with your trip anywhere west.

Its through service route to California takes you through Denver, the Colorado Springs-Pikes Peak Region, Royal Gorge and Salt Lake City.

With through trains and through cars it takes you directly to Yellowstone Park, Glacier Park and the Pacific Northwest; and brings you back via an entirely different route which may embrace the whole magnificent sweep of the Continental Divide, all the way from the Northwest to Pikes Peak with Rocky Mountain National-Estes Park and Denver on the way; providing not only a logical, natural system of through routes, but withal a courteous, convenient and comfortable service which anticipates your every travel wish.

## LOW EXCURSION FARES

In the summer there are extremely low round-trip excursion fares to this glorious Rocky Mountain playland.

Tickets are on sale at all railroad ticket offices in the East, South, Southeast and Middle West, bearing liberal stop-over privileges and long return limit.

## Ample, Comfortable and Reasonable Accommodations

Colorado is a kindly host of long experience, skilled in catering to the needs of tens of thousands of visitors who annually come a-vacationing.

That you may be quite comfortable, there are countless hotels, lodges, rustic alpine inns and camps, so situated as to be within easy reach of the most attractive features of the region. This is one of the most fortunate things about Colorado. You are literally *in the mountains* all the time. Frequently the objective of an enjoyable morning's experience can be gained in a few minutes' ride by motor or a scant hour's jaunt afoot, while almost all of the greatest heights—the sublimest viewpoints—are attainable by a rail or motor journey of from two to five hours.



# SIDE TRIPS INTO THE MOUNTAIN WORLD

## From Denver

To	Cost Round Trip	Route	Days Required
ALLENS PARK .....	\$ 8.75	Denver & Interurban R. R. to Boulder, thence Glacier Auto Line .....	1
AROUND THE CIRCLE .....	36.00	D. & R. G. W. via Royal Gorge, Marshall Pass, and Ridgway to Mancos; returning via Durango, Antonito, La Veta Pass, and Pueblo .....	5
ASPEN .....	28.00	D. & R. G. W. R. R. .....	2
BAILEYS .....	4.40*	Colo. & Sou. Ry. ....	1
BLACK HAWK .....	2.64	Colo. & Sou. Ry. ....	1
†BLUE BIRD COTTAGE .....	1.80	Denver & Interurban R. R. to Boulder .....	1½ hr.
†BLUE JAY INN .....	3.60	Colo. & Sou. Ry. to Buffalo Creek .....	2 hrs.
BOULDER .....	1.80	Denver & Interurban R. R. ....	1½ hr.
BRECKENRIDGE .....	9.90	Colo. & Sou. Ry. ....	2
BUENA VISTA .....	14.80	D. & R. G. W. R. R. ....	2
CASSELLS .....	5.20*	Colo. & Sou. Ry. ....	1
CASTLE MOUNTAIN .....	1.22	Trolley to Golden and Incline Ry. ....	2 hrs.
CIRCLE TRIP .....	See "Ar	ound the Circle."	
CLIFFDALE .....	3.70*	Colo. & Sou. Ry. ....	1
COPELAND LAKE .....	9.00	Denver & Interurban R. R. to Boulder, thence Glacier Automobile Line .....	1
CORONA .....	5.00	D. & S. L. R. R. (Moffat Road) .....	1
CRAIG .....	19.15	D. & S. L. R. R. (Moffat Road) .....	2
DENVER'S MOUNTAIN PARKS .....	4.00	Auto via Golden, Clear Creek Canyon, Lookout Mountain, Bear Creek Canyon, Troutdale, Park of the Red Rocks, and Morrison .....	4 hrs.
DILLON .....	10.80	Colo. & Sou. Ry. ....	2
DOME ROCK .....	2.60*	Colo. & Sou. Ry. ....	1
ECHO LAKE ("Figure 8" Trip) .....	8.00	Auto .....	1
ELDORA .....	6.00	Denver & Interurban R. R. to Boulder, thence Glacier Automobile Line .....	1
ELDORA .....	5.05*	D. & S. L. R. R. (Moffat Road) to Rollinsville—Glacier Auto Line to Eldora .....	1
ELDORADO SPRINGS .....	1.72	Denver & Interurban Ry. ....	2 hrs.
ELKDALE .....	7.05	D. & S. L. R. R. (Moffat Road) .....	2
ESTES PARK .....	See Roc	ky Mountain National-Estes Park.	
FOXTON .....	2.90*	Colo. & Sou. Ry. ....	1
FRASER .....	6.45	D. & S. L. R. R. (Moffat Road) .....	2
GEORGETOWN LOOP .....	3.55*	Colo. & Sou. Ry. ....	1
GLACIER LAKE .....	6.00	Denver & Interurban Ry. to Boulder, thence Glacier Automobile Line .....	1
GLENISLE .....	4.60*	Colo. & Sou. Ry. ....	1
GOLDEN .....	.68	Street Car. ....	2 hrs.
GOLDEN .....	1.20	Colo. & Sou. Ry. ....	1
GRANBY .....	7.45	D. & S. L. R. R. (Moffat Road) .....	2
GRAND LAKE (Circle Tour) .....	See Roc	ky Mountain National-Estes Park.	
GRAND LAKE .....	12.45	Via D. & S. L. R. R. (Moffat Road) to Granby, thence Rocky Mountain Parks Trans. Co .....	2
GRANITE (For Twin Lakes) .....	16.15	D. & R. G. W. R. R. ....	2
GRANT .....	5.40*	Colo. & Sou. Ry. ....	1
GROUSEMONT .....	4.65*	Colo. & Sou. Ry. ....	1
IDAHO SPRINGS .....	2.40*	Colo. & Sou. Ry. ....	1
INSMONT .....	4.35*	Colo. & Sou. Ry. ....	1
LARKSPUR .....	3.12	D. & R. G. W. R. R., or A. T. & S. F. Ry. ....	1½
LEADVILLE .....	14.16	Colo. & Sou. Ry. ....	2
LONGS PEAK .....	10.00	Denver & Interurban R. R. to Boulder, thence Glacier Automobile Line .....	1
LONGMONT .....	2.76	C. B. & Q. R. R. ....	1
LONGVIEW .....	2.60*	Colo. & Sou. Ry. ....	1
LOOKOUT MOUNTAIN .....	2.50	Auto .....	2 hrs.
LOVELAND .....	4.44	Colo. & Sou. Ry. ....	1
LYONS .....	3.48	C. B. & Q. R. R. ....	1
MANITOU .....	4.35*	Colo. & Sou. Ry., or D. & R. G. W. R. R. ....	1
MESA VERDE NATIONAL PARK .....	48.50	D. & R. G. W. via Royal Gorge, Marshall Pass, and Ridgway to Mancos, thence motor, returning via Durango, Antonito, La Veta Pass, and Pueblo .....	6
MONUMENT .....	4.08	D. & R. G. W. R. R., or A. T. & S. F. Ry. ....	1
NEDERLAND .....	4.55*	D. & S. L. R. R. (Moffat Road) to Rollinsville—Glacier Auto Line to Nederland .....	1
PALMER LAKE .....	2.60*	D. & R. G. W. R. R., or A. T. & S. F. Ry. ....	1½
PARK OF THE RED ROCKS .....	See "De	Denver's Mountain Parks" and Morrison.	
PARK OF THE TITANS .....			
PEACEFUL VALLEY (Short Circle Trip) .....	8.00	Denver & Interurban R. R. to Boulder, thence Glacier Auto Line .....	2
PINE CLIFF .....	2.45*	D. & S. L. R. R. (Moffat Road) .....	1
PINE GROVE .....	3.45*	Colo. & Sou. Ry. ....	1

\*Week-end fare. Long-limit tickets on sale daily throughout the summer at slightly higher fare.

†For Women and Girls.



## SIDE TRIPS INTO THE MOUNTAIN WORLD

### From Denver (Concluded)

To	Cost Round Trip	Route	Days Required
ROCKY MOUNTAIN NATIONAL-ESTES PARK	\$10.50	Via Rocky Mountain Parks Transportation Co. (auto), or via C. & S. Ry. to Longmont, Loveland or Ft. Collins thence auto; or via C. B. & Q. to Lyons or Longmont, thence auto. (See Note A.)	2
ROCKY MOUNTAIN NATIONAL-ESTES PARK (Circle Tour)	25.50	Via Rocky Mountain Parks Transportation Co. (auto), or via C. & S. Ry. or C. B. & Q. to the Park gateways, thence auto to Estes Park and over the Fall River Road, Continental Divide and Milner Pass to Grand Lake; returning via Berthoud Pass, Georgetown Loop Region, Clear Creek Canyon, Idaho Springs, and the New Boulevard through Denver's Mountain Parks. (See Note A.)	2
ROCKY MOUNTAIN NATIONAL-ESTES PARK (Circle Tour)	33.00	Two-day tour. Transportation as above and including luncheon at Estes Park Chalets; dinner, lodging and breakfast at Grand Lake Lodge, and luncheon at Idaho Hot Springs Hotel. (See Note A.)	2
ROCKY MOUNTAIN NATIONAL-ESTES PARK (Circle Tour)	39.00	Three-day tour. Transportation as above and including luncheon, dinner and lodging and breakfast at Estes Park Chalets, the same at Grand Lake Lodge, and luncheon at Idaho Hot Springs Hotel. (See Note A.)	3
SEEING DENVER TRIP	1.00	Auto.	1½ hrs.
SEEING THE BOULEVARDS—AUTO TWILIGHT TRIPS	1.00	Auto.	2½ hrs.
SHAWNEE	4.80*	Colo. & Sou. Ry.	1
SOUTH PLATTE	2.40*	Colo. & Sou. Ry.	1
STEAMBOAT SPRINGS	16.15	D. & S. L. R. R. (Moffat Road)	2
SULPHUR SPRINGS	8.25	D. & S. L. R. R. (Moffat Road)	2
TOLLAND	3.15	D. & S. L. R. R. (Moffat Road)	1
TRAPPERS' LAKE		D. & S. L. R. R. (Moffat Road) to Yampa, thence auto and horseback	4
TROUTDALE-IN-THE-PINES	See "Denver's Mountain Parks."		
WARD	7.00	Denver & Interurban R. R. to Boulder, thence Glacier Automobile Line	1
WELLER	5.15*	Colo. & Sou. Ry.	1
WILLS	8.50	Denver & Interurban R. R. to Boulder, thence Glacier Automobile Line	1
YAMPA	13.90	D. & S. L. R. R. (Moffat Road)	2

Further information regarding any of the side trips shown from Denver, or their possible combination in a circuit tour, will be promptly furnished upon application to the Denver Tourist Bureau, 505 17th Street, the Burlington Route-Colorado & Southern Travel Bureau and Ticket Office, 901 17th Street, or at the Union Station Ticket Office, Denver.

NOTE A—Full details as to the manner in which tickets between Denver and Rocky Mountain National Park are interchangeably honored via the several routes are shown on pages 9 and 10.

### From Colorado Springs

To	Cost Round Trip	Route	Days Required
ALAMOSA	\$10.95	D. & R. G. W. R. R.	2
AROUND THE CIRCLE	32.00	D. & R. G. W. via Royal Gorge, Marshall Pass, and Ridgway to Mancos; returning via Durango, Antonito, La Veta Pass, and Pueblo.	5
BROADMOOR	.40	"Broadmoor" Street Car.	1 hr.
BUENA VISTA	10.75	D. & R. G. W. R. R.	2
CANON CITY	4.20*	D. & R. G. W. R. R.	1
CASCADE	.90	Midland Terminal Ry.	1
CAVE OF THE WINDS	2.50	Auto via Colorado Springs, Manitou, and Williams Canyon, complete trip 16 miles.	2 hrs.
CHEYENNE MOUNTAIN (Summit)	3.00	Broadmoor-Cheyenne Mountain Motor Highway	2 hrs.
CLIFF DWELLINGS	2.50	Auto from Colorado Springs via Garden of the Gods and Williams Canyon. Admission to Cliff Dwellings, \$1.00.	2½ hrs.
CORLEY MOUNTAIN HIGHWAY	1.00	Auto (Toll charge \$1.00)	3 hrs.
CRIPPLE CREEK DISTRICT	2.50	Midland Terminal Ry.	1
CRIPPLE CREEK DISTRICT	6.00	Auto from Colorado Springs via Manitou, Rainbow Falls, Ute Pass, Cascade, Green Mt. Falls, Florissant and Petrified Forest.	1
CRYSTAL PARK DRIVE	3.25	Auto.	3 hrs.
CUTLER MOUNTAIN		Reached on horseback or on foot by two trails from North Cheyenne Canyon.	½
EVERGREEN LAKES		Motor or horseback from Leadville, 5 miles	2
FLORENCE	5.64	D. & R. G. W. R. R.	1
FLORISSANT	6.00	Auto from Colorado Springs. "Cripple Creek via Petrified Forest" tour.	1
GARDEN OF THE GODS	1.50	Auto from Colorado Springs, via Mesa Road, Garden of the Gods, Balanced Rock, Mushroom Park and return via Manitou Blvd., or the reverse.	3 hrs.
GLEN PARK		Auto or on foot from Palmer Lake, ½ mile.	½
GRANITE (for Twin Lakes)	12.10	D. & R. G. W. R. R.	2
GREEN MOUNTAIN FALLS	1.10	Midland Terminal Ry.	1
GUNNISON	14.70	D. & R. G. W. R. R.	2

\*Week-end fare. Long-limit tickets on sale daily throughout the summer at slightly higher fare.



## SIDE TRIPS INTO THE MOUNTAIN WORLD

### From Colorado Springs (Concluded)

To	Cost Round Trip	Route	Days Required
HIGH DRIVE.....	\$3.00	Auto from Colorado Springs via Broadmoor, Stratton Park, North Cheyenne Canyon, High Drive, Bruin Inn, and Bear Creek Canyon. Complete trip 15 miles.....	1½
LA VETA.....	6.40	D. & R. G. W. R. R.....	2
LEADVILLE.....	13.60	D. & R. G. W. R. R.....	2
MANCOS.....	32.00	D. & R. G. W. R. R. and R. G. S.....	5
MANITOU.....	.40	Manitou Street Car.....	1 hr.
MANITOU.....	.60	D. & R. G. W. R. R. or Midland Terminal Ry.....	1 hr.
MARSHALL PASS.....	10.80	D. & R. G. W. R. R.....	2
MESA VERDE NATIONAL PARK.....	44.50	D. & R. G. W. via Royal Gorge, Marshall Pass, and Ridgway to Mancos, thence via motor, returning via Durango, Antonito, La Veta Pass, and Pueblo.....	5
MONTE VISTA.....	12.15	D. & R. G. W. R. R.....	2
MONUMENT.....	1.44	D. & R. G. W. R. R. or A. T. & S. F. Ry.....	1½
M. W. A. DRIVE.....	2.00	Auto over Mesa Road to National Sanitarium, returning through Monument Park and Denver Road.....	1½
MT. MANITOU SCENIC INCLINE.....	1.00	Incline Railway from Manitou.....	2 hrs.
NORTH CHEYENNE CANYON.....	.....	"CANYON" or "BROADMOOR" street car to Stratton Park, or on foot or auto 1 to 4 miles. Street-car fare, 28 cents.....	3 hrs.
PALMER LAKE.....	1.15*	D. & R. G. W. R. R., or A. T. & S. F. Ry.....	1½
PHANTOM CLIFF CANYON.....	.....	Manitou street car to D. & R. G. W. R. R. depot, Manitou or on foot, 1 mile, passing the Cliff Dwellings. Street-car fare 28 cents. Admission to Cliff Dwellings, \$1.00..	3 hrs.
PIKES PEAK.....	5.00	Cog Road.....	5 hrs.
PIKES PEAK.....	5.50	Auto Highway.....	6 hrs.
ROYAL GORGE.....	3.45*	D. & R. G. W. R. R.....	1
SEVEN FALLS.....	1.50	Auto via Colorado Springs, Broadmoor and South Cheyenne Canyon, complete trip 15 miles. Admission to Canyon, adults 50 cents, children 25 cents.....	1½ hrs.
SKY LINE DRIVE.....	.....	D. & R. G. W. R. R. to Canyon City and auto 4 miles.....	1
SKY LINE DRIVE.....	.....	D. & R. G. W. R. R. to Canyon City, thence auto to top of the Royal Gorge and return via the Sky Line Drive. Complete auto trip 22 miles.....	1
SKY LINE DRIVE.....	7.50	Auto via Canyon City, Top of the Royal Gorge and return via the Sky Line Drive, complete trip 150 miles.....	1
UTE PASS.....	.....	By auto via Rainbow Falls, Rainbow Glen, Cascade and Green Mountain falls.....	1 hr.
WILLIAMS CANYON.....	.....	Auto or on foot.....	1½ hrs.
WOODLAND.....	1.45	Midland Terminal Ry.....	1

Further information regarding any of the side trips shown, or their possible combination into circuit tours, will be promptly furnished upon application to the Secretary of the Chamber of Commerce, Colorado Springs, or any Burlington Route Agent or Representative.

\*Week-end fare. Long-limit tickets on sale daily throughout the summer at slightly higher fare.

### From Salt Lake City

To	Cost Round Trip	Route	Days Required
BINGHAM COPPER MINES.....	\$2.50	Auto Bingham Stage Line.....	1½ hrs.
BRIGHTON.....	.....	Auto via Big Cottonwood Canyon.....	3 hrs.
CITY CREEK CANYON.....	.....	On foot from Salt Lake City.....	1 hr.
DESERT MUSEUM.....	.....	Admission free.....	.....
EMIGRATION CANYON.....	.....	Auto.....	2 hrs.
GREAT SALT LAKE.....	See "Salt Lake Beach."	.....	.....
LAGOON.....	.35	Bamberger Elec. Lines.....	1 hr.
MILL CREEK CANYON.....	.....	Auto.....	1
OGDEN CANYON.....	1.65*	Bamberger Electric Cars via Ogden.....	1½
PARLEY'S CANYON.....	.....	D. & R. G. W. R. R. to numerous resorts along the Canyon.....	1
PARLEY'S CANYON.....	.....	Auto.....	1
PHARAOH'S GLEN.....	1.44	D. & R. G. W. R. R. through Parley's Canyon.....	1
PROVO CANYON (VIVIAN PARK).....	5.40	D. & R. G. W. R. R.....	1
PROVO CANYON.....	.....	S. L. & U. Ry. to Orem and conveyance, 2 miles.....	.....
SALT LAKE BEACH.....	.35	S. L. G. & W. Ry.....	1 hr.
SALT LAKE BEACH.....	2.50	Auto via Salt Lake Trans. Co. or Pierce Arrow Sightseeing Trans. Co.....	3 hrs.
SEEING SALT LAKE CITY (Automobiles).....	1.00	15-mile trip.....	1½ hrs.
WASATCH DRIVE.....	2.50	Auto via Salt Lake Trans. Co. or Pierce Arrow Sightseeing Trans. Co.....	2 hrs.
SMELTERS TRIP.....	.57	Salt Lake Route.....	1
MT. TIMPANOGAS, AM. FORK CANYON.....	6.50	Auto via Salt Lake Trans. Co. or Pierce Arrow Sightseeing Trans. Co.....	1

Further information regarding any of the side trips from Salt Lake City shown herein will be promptly furnished upon application to the Secretary of the Chamber of Commerce, or at the office of the Burlington Route, Clift Building, Salt Lake City.

\*Week-end fare. Long-limit tickets on sale daily throughout the summer at slightly higher fare.



# "BETTER VACATIONS"

In 1925 a new standard was unfurled and hoisted to the *Burlington* masthead to float just underneath that other old time standard "Better Service" under whose influence The Burlington has built up a system of efficient and dependable through-route service which is well-known everywhere and commonly utilized by people traveling on business or for pleasure between the East, the Midwest, the Rocky Mountains and the Pacific Northwest.

The "Better Vacations" banner was the result of the organization by The Burlington Route and associated lines, the Great Northern Ry. and Northern Pacific Ry., of a series of *Escorted Summer Vacation Tours* to leave Chicago and St. Louis on stated days every week; to make comprehensive circuits embracing combinations of Colorado and the great National Parks of the Scenic Rockies, to follow a definite schedule all the way through, with a completely pre-arranged program carefully planned—all at a given price known beforehand—and resulting, we thought, in a better vacation trip than many individuals could themselves plan, and at less cost.

The success of the Tours last year was so marked—so far beyond expectations, that the sponsoring railroads have been encouraged to operate twice as many for 1926—and so instead of two tours per week, this summer there will be four per week and sometimes five.

A lump sum includes railroad fare, Pullman accommodations, motor transportation, meals in dining cars and hotels, lodging, sight-seeing, National Parks tours—in fact all items of necessary expense—leaving the way clear to a carefree, wholly enjoyable vacation experience with-

out bother as to tickets, baggage, timetables, or other travel details. An experienced railroad representative will accompany each tour party and look after all these things and there will be no charge made for his services.

The operation of these tours in no way supplants or changes the familiar structure of excellent through-route train service commonly afforded by these railroads and outlined elsewhere in this booklet, but rather represents a new and efficient travel service quite in addition thereto.

In computing the over-all charge for these tours, only the actual costs were taken as factors—nothing added for overhead—so that the charge may be fairly regarded as the lowest possible figure consistent with strictly first-class service throughout and with a vacation plan comprehensive in scope, unusual as to routing and embracing the most attractive features which it is possible to manage within the time specified.

The management of The Burlington Route commends these Escorted Tours to your attention and use as a most-for-the-time-and-money solution of the vacation problem.

On the three succeeding pages will be found brief outlines of

Tour B—Colorado and Yellowstone National Park

Tour D—Yellowstone National Park and Colorado

Tour E—All Colorado, including Rocky Mountain National (Estes) Park and Salt Lake City.

For illustrated booklet and detailed information, address any Burlington representative listed on page 35

or write to

**J. G. DELAPLAINE, Manager**

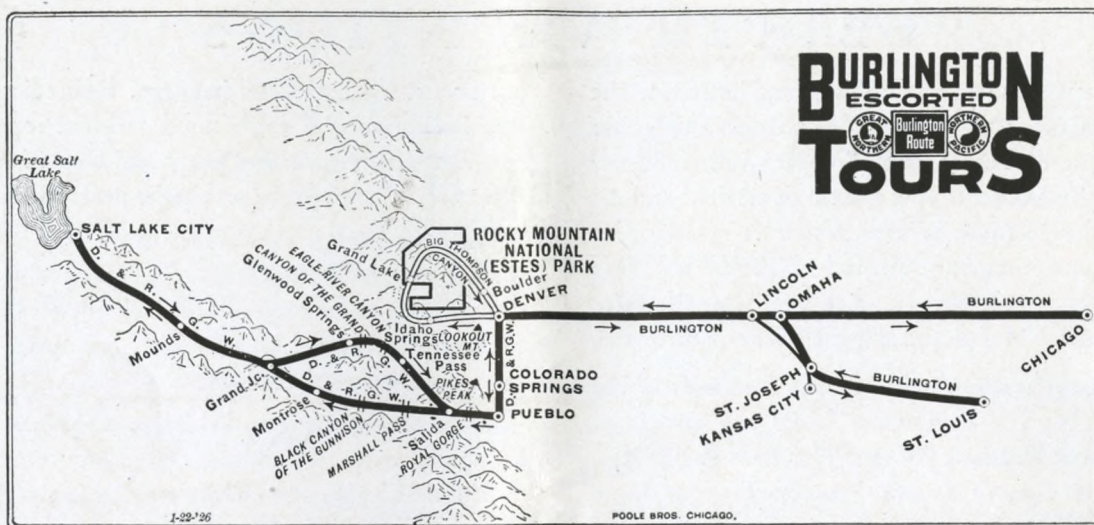
**BURLINGTON ESCORTED TOURS**

Room 1403 Burlington Bldg., 547 West Jackson Blvd.

CHICAGO







## TOUR E—ALL-COLORADO—SALT LAKE ITINERARY

**SATURDAY**—Leave Chicago 11.30 p.m. from new Union Station via Burlington Route.

Leave St. Louis 9.01 p.m. via Burlington Route.

**SUNDAY**—St. Louis party en route via St. Joseph and Missouri River, arrive Omaha 11.50 a.m. Luncheon and auto ride joining Chicago party, leaving Omaha 4.25 p.m.

**MONDAY**—Arrive Denver 7.15 a.m. Leave Denver 8.15 a.m. Arrive Colorado Springs 10.55 a.m. Afternoon auto trip to summit of Pikes Peak. Luncheon, dinner and overnight at Antlers Hotel.

**TUESDAY**—Morning auto trip—circle drive—including Garden of the Gods, Cave of the Winds, South Cheyenne Canyon, Seven Falls and other scenic attractions in the vicinity. Breakfast, luncheon and dinner Antlers Hotel. Leave Colorado Springs 9.57 p.m. via D. & R. G. W. R. R.

**WEDNESDAY**—Arrive Salida 6.00 a.m. Breakfast here, thence via Narrow Gauge Route for a thrilling trip over Marshall Pass and through the Black Canyon of the Gunnison. Arrive Grand Junction 6.35 p.m. Leave 10.00 p.m. for Salt Lake.

**THURSDAY**—Arrive Salt Lake 8.30 a.m. Autos from station for drive around city. Noon organ recital at the Mormon Tabernacle. Luncheon Hotel Utah. Afternoon trip to Saltair Beach, for a dip in Great Salt Lake. Leave Salt Lake 6.00 p.m.

**FRIDAY**—En route through Glenwood Springs, the Canyon of the Grand River, Eagle River Canyon, over Tennessee Pass, and through the Royal Gorge—a wonderful day's train trip, arriving Denver 9.00 p.m. Overnight Cosmopolitan Hotel.

**SATURDAY**—An afternoon motor trip around the residence section and City Parks. Breakfast, luncheon, dinner and overnight at Cosmopolitan Hotel.

**SUNDAY**—Leave 9.00 a.m. for motor trip over Lookout Mountain and through Denver's Mountain Parks to Troutdale-in-the-Pines for luncheon, thence via Clear Creek Canyon to Idaho Springs Hotel for dinner and overnight.

**MONDAY**—Leave Idaho Springs Hotel 8.00 a.m. via motor through Clear Creek Canyon and over the Continental Divide at Berthoud Pass. Arrive Grand Lake for luncheon. We spend the afternoon and overnight here.

**TUESDAY**—Leave Grand Lake via motor for trip over Milner and Fall River Passes, through Horseshoe Park, arriving Estes Park for luncheon. Afternoon and overnight here.

**WEDNESDAY**—At Estes Park Chalets. This is an open day in our schedule for which nothing is planned. Do as you please.

**THURSDAY**—Leave Estes Park Chalets 8.00 a.m. via the Big Thompson Canyon and Loveland. Arrive Boulder for luncheon at Boulderado Hotel, reaching Denver late in the afternoon for dinner Cosmopolitan Hotel. Leave 11.30 p.m. via Burlington Route.

**FRIDAY**—En route through the grazing and farming country of western Nebraska, arriving Omaha 3.30 p.m. St. Louis party leaves Tour at Omaha.

**SATURDAY**—Arrive Chicago 7.00 a.m. via Burlington Route. Arrive St. Louis 7.19 a.m. via Burlington Route.

### COST OF COMPLETE TOURS

Embracing Railroad Fare, Pullman, Meals, Lodging, Motor Trips—All Necessary Expenses

	FROM CHICAGO	FROM ST. LOUIS
1 person occupying a double lower berth.....	\$199.61	\$199.06
1 person occupying a double upper berth.....	192.40	192.15
2 persons occupying a double lower berth.....	181.61 each	181.81 each





## TOUR B—COLORADO-YELLOWSTONE ITINERARY

**THURSDAY**—Leave Chicago 11.30 p.m. from new Union Station via Burlington Route.

Leave St. Louis 9.01 p.m. via Burlington Route.

**FRIDAY**—CHICAGO party en route through Iowa. St. Louis party en route via St. Joseph and the Missouri River, arrive Omaha 11.50 a.m. Luncheon and auto ride here, joining Chicago party, leaving Omaha 4.25 p.m.

**SATURDAY**—Arrive Denver 7.15 a.m. Breakfast and luncheon Albany Hotel. Afternoon auto trip around city and up Bear Creek Canyon to Denver Motor Club for picnic dinner. Leave Denver 11.00 p.m. via Colorado & Southern Ry. for Colorado Springs.

**SUNDAY**—Arrive Colorado Springs 7.00 a.m. Morning trip to summit of Pikes Peak. Breakfast and luncheon at Cliff House, Manitou. Afternoon motor trip to the Garden of the Gods, Williams Canyon, Cave of the Winds, South Cheyenne Canyon. Dinner at the Antlers Hotel, Colorado Springs. Leave Colorado Springs Monday morning, sleepers open 9.00 p.m. Sunday.

**MONDAY**—Arrive Denver 7.00 a.m., morning motor trip via Lookout Mountain, Denver's Mountain Parks, Clear Creek Canyon, Idaho Springs, over the Continental Divide at Berthoud Pass to Grand Lake.

**TUESDAY**—Leave Grand Lake 8.00 a.m. via Milner and Fall River Passes and Horseshoe Park to Estes Park Chalets for luncheon. Leave 4.00 p.m. for a wonderful ride through the twenty-two mile Canyon of the Big Thompson River. Leave Loveland 8.21 p.m. for Yellowstone.

**WEDNESDAY**—Through Casper, Thermopolis Hot Springs, Wind

River Canyon, along the east slope of the Big Horn Mountains, stopping at Billings for the evening.

**THURSDAY**—Breakfast at Livingston, arrive Gardiner, the entrance to "wonderland" at 11.15 a.m. via Northern Pacific. Luncheon at Mammoth Hot Springs. Afternoon hike over the Hot Springs and Terraces.

**FRIDAY**—Through three famous geyser basins to Old Faithful, where we spend twenty-four hours. Afternoon hiking trip among the greatest aggregation of geysers in the world.

**SATURDAY**—Leave Old Faithful 1.50 p.m. twice over the Continental Divide and along the shore of Yellowstone Lake to the Lake Hotel or Lodge.

**SUNDAY**—Along the Yellowstone River through Hayden Valley—to the Grand Canyon, with side trip to Dunraven Pass. Plenty of time in the afternoon to view the majestic Great Falls from various vantage points and to explore the wonderful Painted Canyon.

**MONDAY**—Leave Grand Canyon 9.00 a.m. over the Cody Road—the famous ninety-mile scenic highway through the Buffalo Bill country, over Sylvan Pass and by the great Shoshone Irrigation Dam and through the Shoshone Canyon.

Leave Cody 8.30 p.m. via Burlington Route.

**TUESDAY**—Through the old Indian country, the Bad Lands and wheat fields of North Dakota.

**WEDNESDAY**—Arrive St. Paul 7.15 a.m. via Northern Pacific. Day-light ride along the beautiful Wisconsin shore of Lake Pepin and the Mississippi River. Arrive Chicago 7.55 p.m.

Passengers for St. Louis leave Chicago 9.00 p.m., arrive St. Louis 7.00 a.m. Thursday.

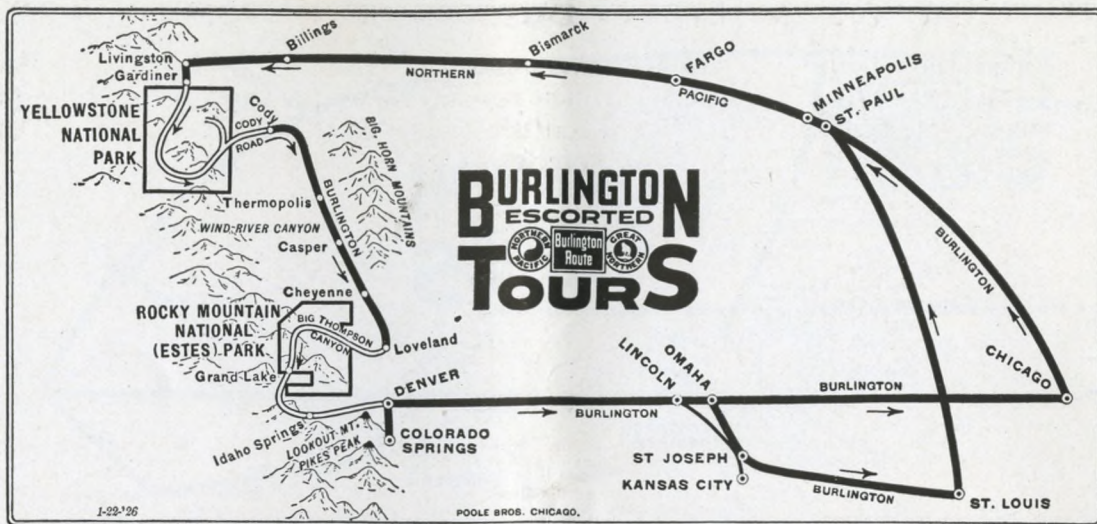
### COST OF COMPLETE TOURS

Through Rocky Mountain National Parks and Yellowstone (via Hotels), Railroad Fare, Pullman, Meals, Lodging, Motor Trips—All Necessary Expenses

	FROM CHICAGO	FROM ST. LOUIS
1 person occupying a double lower berth.....	*\$221.61	*\$228.71
1 person occupying a double upper berth.....	* 213.70	* 220.20
2 persons occupying a double lower berth.....	* 201.86 each	* 207.46 each

\*Via Lodges Through Yellowstone, \$9.00 Less





## TOUR D—YELLOWSTONE-COLORADO ITINERARY

**SUNDAY**—Leave Chicago 10.35 a.m. from new Union Station via Burlington Route, skirting the east shore of the Mississippi River for over three hundred miles during the afternoon. Leave St. Paul 11.00 p.m.

**SATURDAY**—Leave St. Louis 2.15 p.m. via Burlington Route.

**SUNDAY**—St. Louis party arrives St. Paul 8.35 a.m., remaining until evening. Luncheon and dinner St. Paul Hotel with auto trip to interesting points around the Twin Cities, joining Chicago party here, leaving St. Paul 11.00 p.m.

**MONDAY**—En route through the wheat fields of Minnesota and North Dakota.

**TUESDAY**—Breakfast Livingston, arrive Gardiner, the entrance to "wonderland," 11.15 a.m. via Northern Pacific. Luncheon Mammoth Hot Springs. Afternoon hiking trip over Hot Springs Terraces.

**WEDNESDAY**—Through three famous geyser basins to Old Faithful where we spend twenty-four hours. Afternoon hiking trip among the greatest aggregation of geysers in the world.

**THURSDAY**—Leave Old Faithful 1.50 p.m.; twice over the Continental Divide and along the shore of Yellowstone Lake to the Lake Hotel or Lodge.

**FRIDAY**—Along the Yellowstone River through Hayden Valley to the Grand Canyon, with side trip to Dunraven Pass. Plenty of time in the afternoon to view the majestic Great Falls from various vantage points and to explore the wonderful Painted Canyon.

**SATURDAY**—Leave Grand Canyon 9.00 a.m. over the Cody Road—the famous ninety-mile scenic highway through the Buffalo Bill

country, over Sylvan Pass and by the great Shoshone Irrigation Dam and through the Shoshone Canyon. Arrive Cody 5.10 p.m. Overnight in Cody.

**SUNDAY**—Leave Cody 8.20 a.m. over the inter-mountain highway, through Wind River Canyon, Thermopolis Hot Springs, the Casper oil fields—Big Horn Mountains to the east, Rockies to the west.

**MONDAY**—Arrive Loveland 7.37 a.m. Breakfast Lovelander Hotel. Motor to Estes Park Chalets via the wonderful Big Thompson Canyon for an afternoon of rest at this delightful mountain resort.

**TUESDAY**—Leave Estes Park Chalets 7.00 a.m. for scenic motor trip through Horseshoe Park and over Fall River and Milner Passes, a most wonderful trip. Afternoon and night at Grand Lake.

**WEDNESDAY**—Leave Grand Lake 8.00 a.m. for another interesting trip—over Berthoud Pass, including Clear Creek Canyon and Idaho Springs, reaching Denver early in the afternoon—dinner Albany Hotel, twilight trip around residence section and City Parks, leaving 11.00 p.m. for Colorado Springs.

**THURSDAY**—Arrive Colorado Springs 7.00 a.m. Morning trip to summit of Pikes Peak. Breakfast and luncheon at Cliff House, Manitou. Afternoon motor trip to the Garden of the Gods, Williams Canyon, Cave of the Winds, South Cheyenne Canyon. Dinner at the Antlers Hotel, Colorado Springs.

Leave Colorado Springs 7.15 p.m.

**FRIDAY**—En route through grazing and farming country of western Nebraska, arriving Omaha 3.30 p.m.

St. Louis party leaves Tour at Omaha.

**SATURDAY**—Arrive Chicago 7.00 a.m. via Burlington Route. Arrive St. Louis 7.19 a.m. via Burlington Route.

### COST OF COMPLETE TOURS

Through Yellowstone (via Hotels) and Rocky Mountain National Parks, Railroad Fare, Pullman, Meals, Lodging, Motor Trips—All Necessary Expenses

	FROM CHICAGO	FROM ST. LOUIS
1 person occupying a double lower berth.....	*\$220.89	*\$227.54
1 person occupying a double upper berth.....	* 213.55	* 220.50
2 persons occupying a double lower berth.....	* 202.57 each	* 209.97 each

\*Via Lodges Through Yellowstone, \$9.00 Less



# Burlington Route Travel Bureaus and Ticket Offices

The it's-a-pleasure-to-help-you service of *Burlington* representatives is "at your service" to explain the advantages of *Burlington* service. The nearest one of them will be glad to promptly supply any needed information about your contemplated trip—in fact, save you time and trouble by making *all* arrangements for your complete tour Out West.

ATCHISON, KAN., Second and Main Streets  
PAUL ANDERSON.....Commercial Agent

ATLANTA, GA., 822 Healey Bldg.  
H. R. TODD.....General Agent  
W. T. VARDAMAN...Trav. Frt. and Pass'r Agent  
H. B. HOWE.....Trav. Frt. and Pass'r Agent  
W. T. WALSH.....Traveling Passenger Agent

BEATRICE, NEB.  
H. L. LEWIS.....Div. Freight and Pass'r Agent

BILLINGS, MONT., 2812 Montana Avenue  
L. W. JOHNSTON, Div. Freight and Pass'r Agent

BOSTON, MASS., 294 Washington St.  
F. F. JOHNSON.....General Agent  
JONATHAN STORY...Traveling Passenger Agent  
B. N. STONER.....City Passenger Agent

BURLINGTON, IOWA, Burlington Bldg.  
J. J. TEETER.....Division Passenger Agent

CASPER, WYO., Burlington Depot  
J. A. LEARY.....Div. Freight and Pass'r Agent

CHEYENNE, WYO., Burlington—C. & S. Station  
G. F. JONES.....General Agent

CHICAGO, ILL., 179 West Jackson Street  
J. R. VAN DYKE....Gen'l Agent Pass'r Dept.  
S. J. OWENS.....City Passenger Agent  
547 West Jackson Street  
P. N. BUTZEN.....Traveling Passenger Agent

CINCINNATI, OHIO, 104 West Fourth St.  
J. C. BOYER.....General Agent  
W. E. STOUFFER....City Passenger Agent  
C. E. HEALY.....Traveling Passenger Agent

CLEVELAND, OHIO, 408 Hippodrome Bldg.  
E. H. SMITH.....General Agent  
A. G. MATHEWS....Traveling Passenger Agent  
S. J. PROCHASKA...City Passenger Agent

CLINTON, IOWA, 404 Wilson Bldg.  
WM. AUSTIN.....Commercial Agent

COLORADO SPRINGS, COLO., C. & S. Ry.  
317 Mining Exchange Bldg.  
R. T. FOX.....General Agent

COUNCIL BLUFFS, IOWA, 121 Pearl Street  
J. E. SWAN.....City Passenger and Ticket Agent

DALLAS, TEXAS, 701 Kirby Building  
C. W. ANDREWS....General Agent  
J. M. McDERMOTT, Trav. Frt. and Pass'r Agent

DAVENPORT, IOWA, Foot of Perry Street  
M. H. TEED.....Passenger and Ticket Agent

DEADWOOD, S. D., 48 Sherman Street  
J. L. BENTLEY....Div. Frt. and Pass'r Agent

DENVER, COLO., 901 17th St., Cor. Champa  
S. R. DRURY.....Gen'l Agent Pass'r Dept.  
F. W. JOHNSON....City Passenger Agent  
C. W. ANDERSON....City Ticket Agent  
A. M. COLLINS....Traveling Passenger Agent

DES MOINES, IOWA, Consolidated Ticket Office  
403 W. Walnut Street  
G. R. KLINE.....Agent  
206 Equitable Bldg.  
A. M. HIXSON.....Commercial Agent

DETROIT, MICH., 708 Transportation Bldg.  
F. C. BOARD.....General Agent  
G. E. WEILER.....Traveling Passenger Agent  
E. W. CLARKE.....City Passenger Agent

GALESBURG, ILL., Burlington Station  
C. I. TWYMAN.....Division Passenger Agent

HANNIBAL, MO., Corner Third and Lyons Sts.  
E. L. SPEER.....Div. Freight and Pass'r Agent

INDIANAPOLIS, IND., 910 Merchants Bank Bldg.  
F. L. GANNAWAY...General Agent  
B. G. WRIGHT.....Traveling Passenger Agent

JACKSONVILLE, FLA., 510 Graham Bldg.  
T. H. HARRISON...Trav. Frt. and Pass'r Agent

KANSAS CITY, MO.  
701 Walnut Street  
H. S. JONES.....Gen'l Agent Pass'r Dept.  
F. B. ROOT.....City Ticket Agent  
DON MEADE.....City Passenger Agent  
J. A. REES.....Trav. Freight and Pass'r Agent

KEOKUK, IOWA, Fifth and Johnson Streets  
A. C. MAXWELL...Div. Freight and Pass'r Agent

LEAVENWORTH, KAN., Fifth and Choctaw Sts.  
S. E. NIRDLINGER...Commercial Agent

LINCOLN, NEB., City Ticket Office  
120 N. Thirteenth Street  
H. P. KAUFFMAN....City Passenger Agent  
W. T. ALBRECHT....City Ticket Agent

MILWAUKEE, WIS., 221 Grand Avenue  
F. D. HUNTER.....General Agent

MINNEAPOLIS, MINN., Joint City Ticket Office  
50 South 6th Street  
J. F. McELROY....City Ticket Agent  
J. E. LYNN.....City Passenger Agent

NEW ORLEANS, LA., 708 Common Street  
G. B. MAGRUDER...General Agent  
C. R. STAUSS.....Traveling Passenger Agent  
L. J. REINHARDT...Traveling Passenger Agent

NEW YORK CITY, N. Y., 421 Stewart Bldg.  
W. S. DEWEY.....General Agent  
M. J. FOX.....City Passenger Agent  
H. SCHNEIDER....Traveling Passenger Agent

OMAHA, NEB., 300 South Sixteenth Street  
J. W. SHARPE....Gen'l Agent Pass'r Dept.  
J. B. REYNOLDS....City Ticket Agent

OMAHA, NEB., 1004 Farnam Street  
C. C. BRADLEY....Division Passenger Agent  
S. C. DANIELS....Traveling Passenger Agent

PADUCAH, KY., Consolidated Ticket Offices  
Fifth Street and Broadway  
R. W. PADGITT....Agent  
1011 City National Bank Building  
E. E. MORRIS....Commercial Agent

PEORIA, ILL.,  
Corner Jefferson Avenue and Liberty Street  
W. E. JOHNSON....Agent  
230 South Jefferson Avenue  
H. D. PAGE.....General Agent

PHILADELPHIA, PA., 1420 South Penn Square  
H. K. MILES.....General Agent  
C. E. DOLAN.....Traveling Passenger Agent  
F. J. EARLY.....City Passenger Agent

PITTSBURGH, PA., 504 Park Bldg.  
W. V. TAFFNER....General Agent  
S. M. WOOLLEY....Traveling Passenger Agent  
J. W. McADOO....City Passenger Agent

PUEBLO, COLO., C. & S. Ry.  
204 Central Block  
A. S. CUTHBERTSON...General Agent

QUINCY, ILL., 513 Hampshire Street  
B. R. NEWLON...Div. Freight and Pass'r Agent  
A. S. ELLIS.....City Pass'r and Ticket Agent

SALT LAKE CITY, UTAH  
300 Clift Building  
R. F. NESLEN.....General Agent  
L. D. ROBINSON...Trav. Frt. and Pass'r Agent  
C. J. DALLMORE...Trav. Frt. and Pass'r Agent

SHERIDAN, WYO., Burlington Station  
W. C. SUTLEY.....Agent

SIOUX CITY, IOWA, 516 Nebraska Street  
P. J. DONOHUE....General Agent  
G. R. NORTON....City Pass'r and Freight Agent

ST. JOSEPH, MO., 110 South Fifth Street  
J. D. BAKER.....Division Passenger Agent  
A. E. MARTIN.....City Passenger Agent

ST. LOUIS, MO., 324 N. Broadway  
E. J. WEYNACHT...City Ticket Agent  
208 North Broadway  
C. B. OGLE.....Gen'l Agent Pass'r Dept.  
S. T. ABBOTT.....Traveling Passenger Agent  
J. A. McCUE.....Trav. Frt. and Pass'r Agent  
A. G. SUDHOFF....City Passenger Agent

ST. PAUL, MINN., Union Ticket Office  
Jackson and Fourth Streets  
W. J. DUTCH.....Agent  
S. L. MENTZER....City Passenger Agent  
228 Railroad Building  
BEN W. WILSON...Gen'l Agent Pass'r Dept.

TULSA, OKLA., 314 Kennedy Bldg.  
A. L. MOORE.....General Agent  
A. R. BROWN.....Traveling Passenger Agent

Your local railroad agent will be glad to tell you more about Burlington-Planned Vacations and service, or write:

C. J. ROHWITZ,  
General Passenger Agent, Omaha

A. COTSWORTH JR.,  
General Passenger Agent, Chicago

T. P. HINCHCLIFF,  
General Passenger Agent, St. Louis

P. S. EUSTIS, Passenger Traffic Manager, Chicago, Ill.

*The views used on covers are from original photographs furnished through the courtesy of Fred Payne Clatworthy, L. H. Standley, and the Director of the Colorado National Forest*

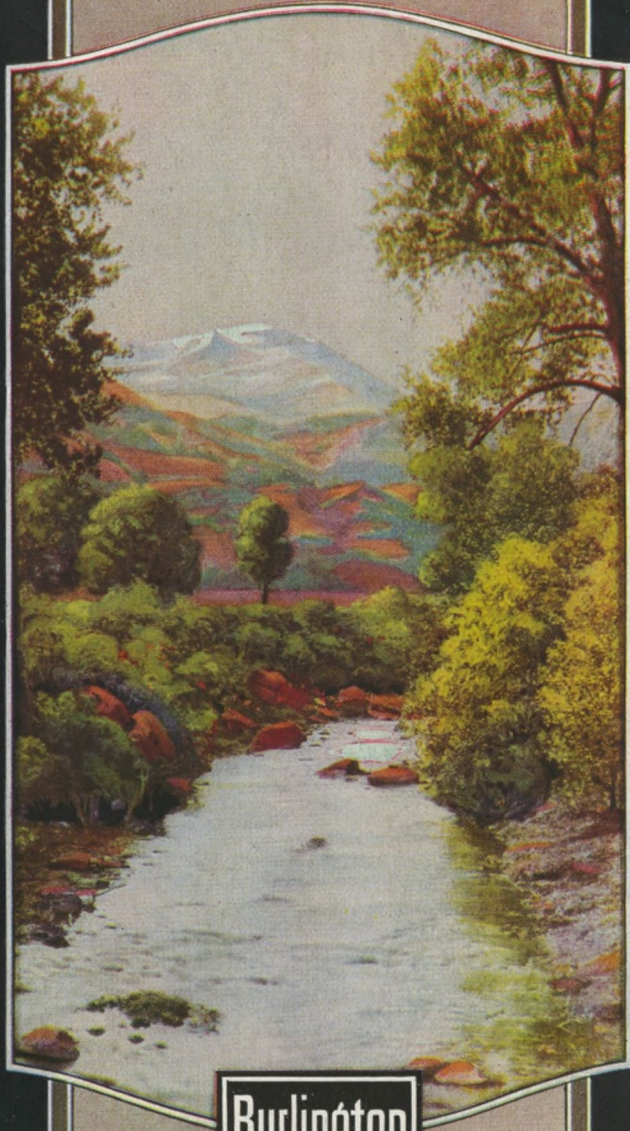
Thirty-five





Burlington  
Route

**SCENIC  
COLORADO  
& UTAH**



Burlington  
Route

**SCENIC  
COLORADO  
& UTAH**