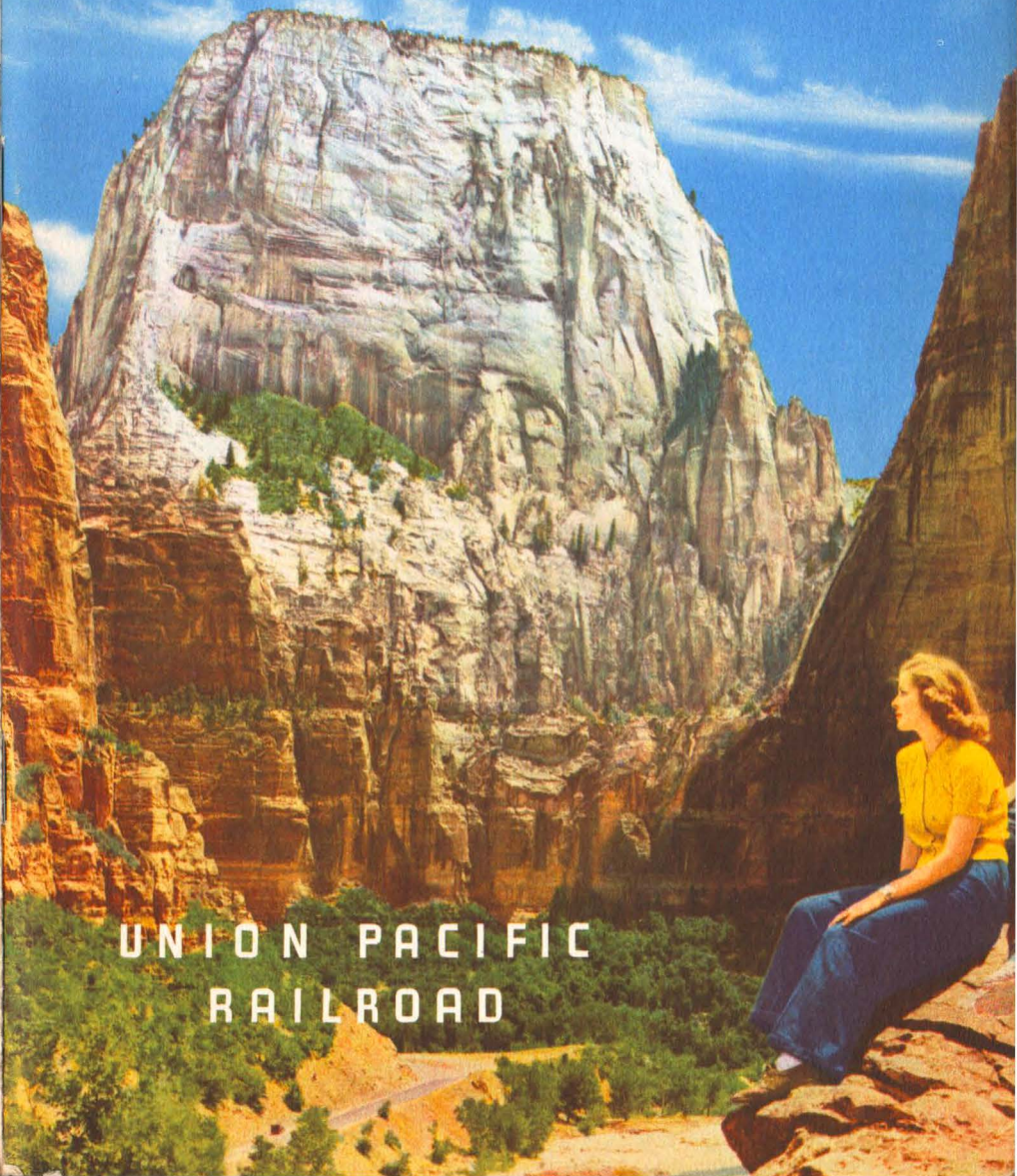


ZION • BRYCE CANYON GRAND CANYON National Parks

UNION PACIFIC
RAILROAD



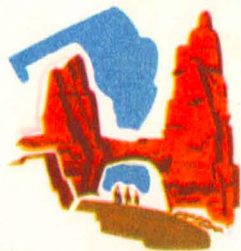


Nature's greatest concentration
of scenic beauty!

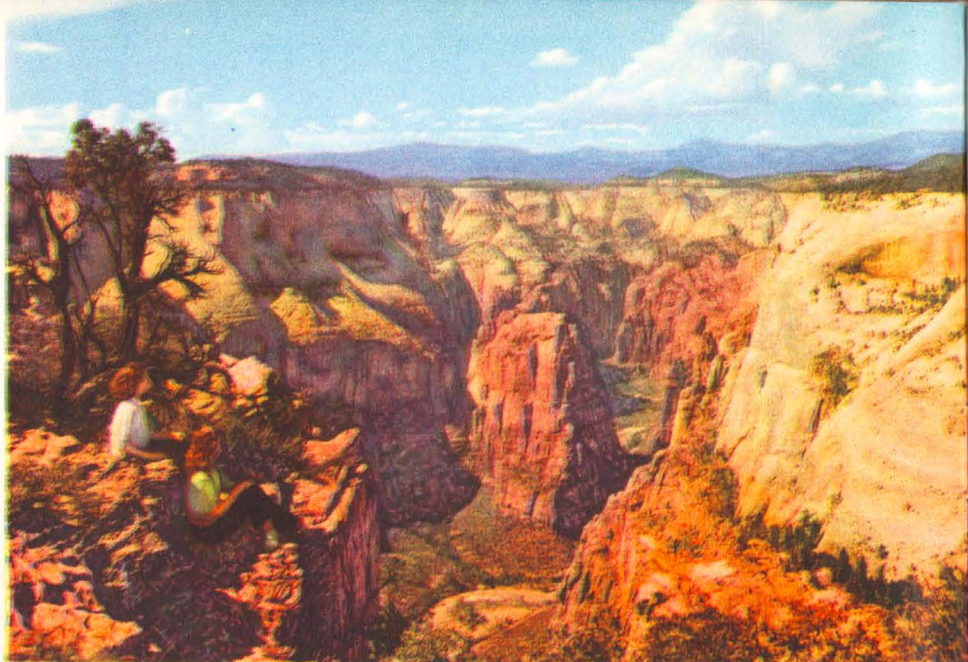
(Front Cover) *The Great White Throne, Zion National Park, Utah*

America's Scenic Sensation

**a world sublime
in form and color!**



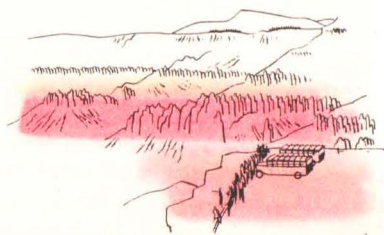
America is a strange land. A land of many lands—of East and North and South and West. Lands of exciting beauty and adventure. And if you seek the unusual . . . masterpieces of the Great Architect that will stir your emotions; hold you spell-bound with a feeling of deep humility, then set forth for that western region of unparalleled scenic splendor, known all too casually as the National Parks of Southern Utah-Arizona. Here Nature has wrought with a lavish hand. Everything is on a gigantic scale and color has been splashed around so extravagantly that artists despair of ever catching the brilliance of such flashing colors. No process yet devised by man can faithfully bring to you the beauty of these supreme achievements of Nature. You must see them for yourself! In that way, and that way *only*, you will carry away the unforgettable images they will impress upon your mind. Time and again you will call up those images to relive with pleasure the delightful hours spent in the inspiring environment of Zion, Bryce Canyon and Grand Canyon National Parks.



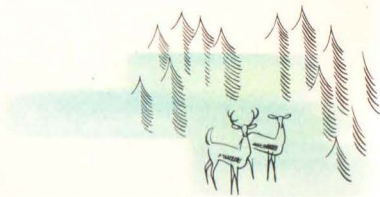
ZION NATIONAL PARK

Five in One

The Southern Utah-Arizona National Parks are comprised of five scenic regions: Zion National Park, Bryce Canyon National Park, Cedar Breaks National Monument—all in Utah—and Grand Canyon National Park and Kaibab National Forest, in Arizona. All five regions are so closely grouped that all may be seen on one continuous tour. All are connected by surfaced highways for the traveler's convenience and comfort. Amazingly, although each region is within easy distance of the others, no two are



CEDAR BREAKS

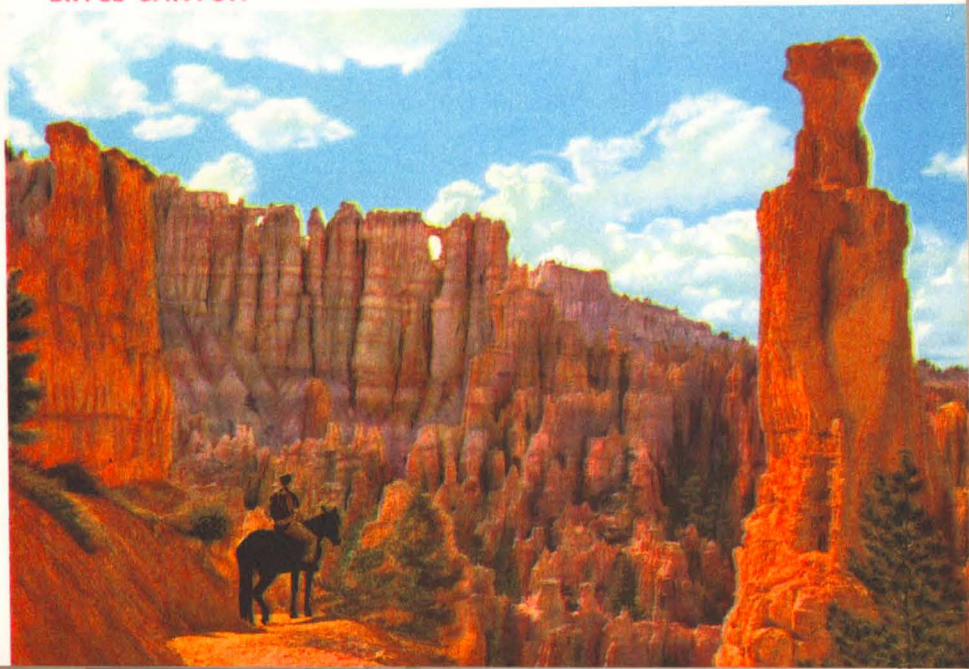


KAIBAB FOREST



GRAND CANYON

BRYCE CANYON



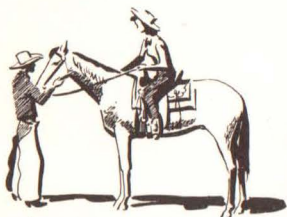


alike. Each has its own distinctive formations—its own coloring. Union Pacific motor bus tours start from Cedar City, Utah, which is the terminus of the Union Pacific branch line from Lund, Utah, on the main line between Salt Lake City and Southern California. The route of the complete five-day tour is from Cedar City to Zion National Park, thence across the Prismatic Plains and through Kaibab National Forest to the North Rim of Grand Canyon; back, northward, to Bryce Canyon National Park returning through Cedar Breaks National Monument to Cedar City. On the way quaint Mormon settlements and many places of historic interest are passed. The route is through Utah's "Dixie," in whose sub-tropical climate grows a variety of agricultural products including cotton, tobacco, figs and luscious melons.



ZION

"heavenly" is the word for it!



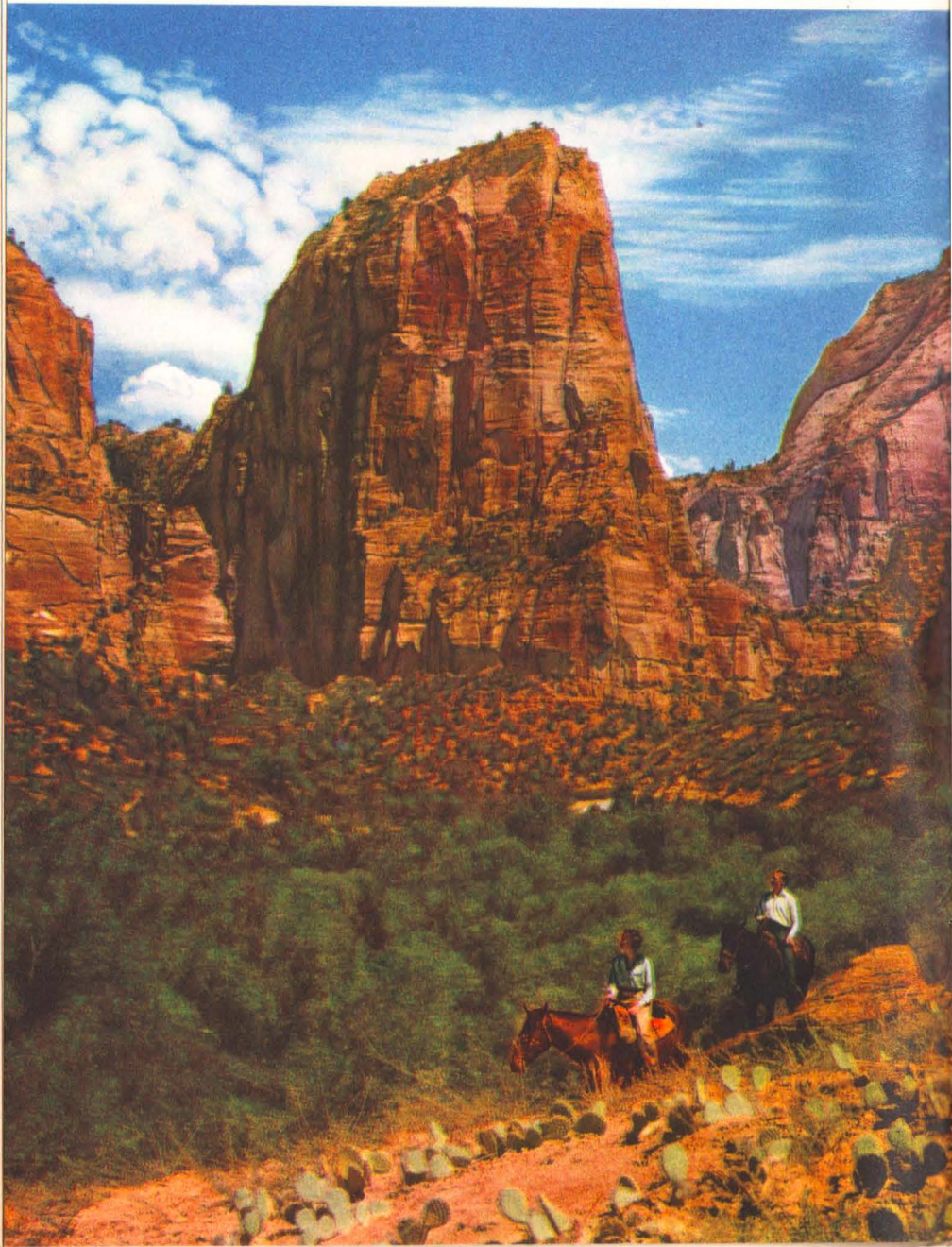
Here—in Zion—is inspiration. A magnificent hymn translated into natural architecture. The soaring notes . . . the cloud-seeking stone monuments. The melody . . . the gentle rise and fall of foliated valleys.

Here, too, is color. Not the brilliant tones of mystic Bryce, but a blending of pastel-like shades with occasional crimson streaks. The names of Zion's monuments carry out its sublimity: the Great White Throne, Temple of Sinawava, Angels Landing, the Great Organ, and so on.



The Great White Throne towers 2,475 feet above the river at its base, its wooded crest, "an inaccessible island in the air." Its lower portion red, its upper surface tinting from rosy buff to chalky white, this colossal butte is one of the world's great rocks. It is seen most effectively from the Temple of Sinawava, through the vermilion gap between Angels Landing and the Great Organ. The Temple of Sinawava is a park-like area of green grass and a variety of shade

Angels Landing, Zion National Park



trees, surrounded by sheer rock formations of sombre red. A great many wild flowers are to be found here and their delicate perfume adds to the sanctuary-like air of this delightful place. Space permits mention of but a few of Zion's dazzling attractions.

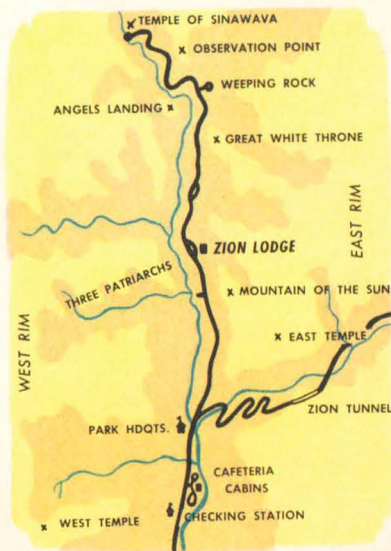


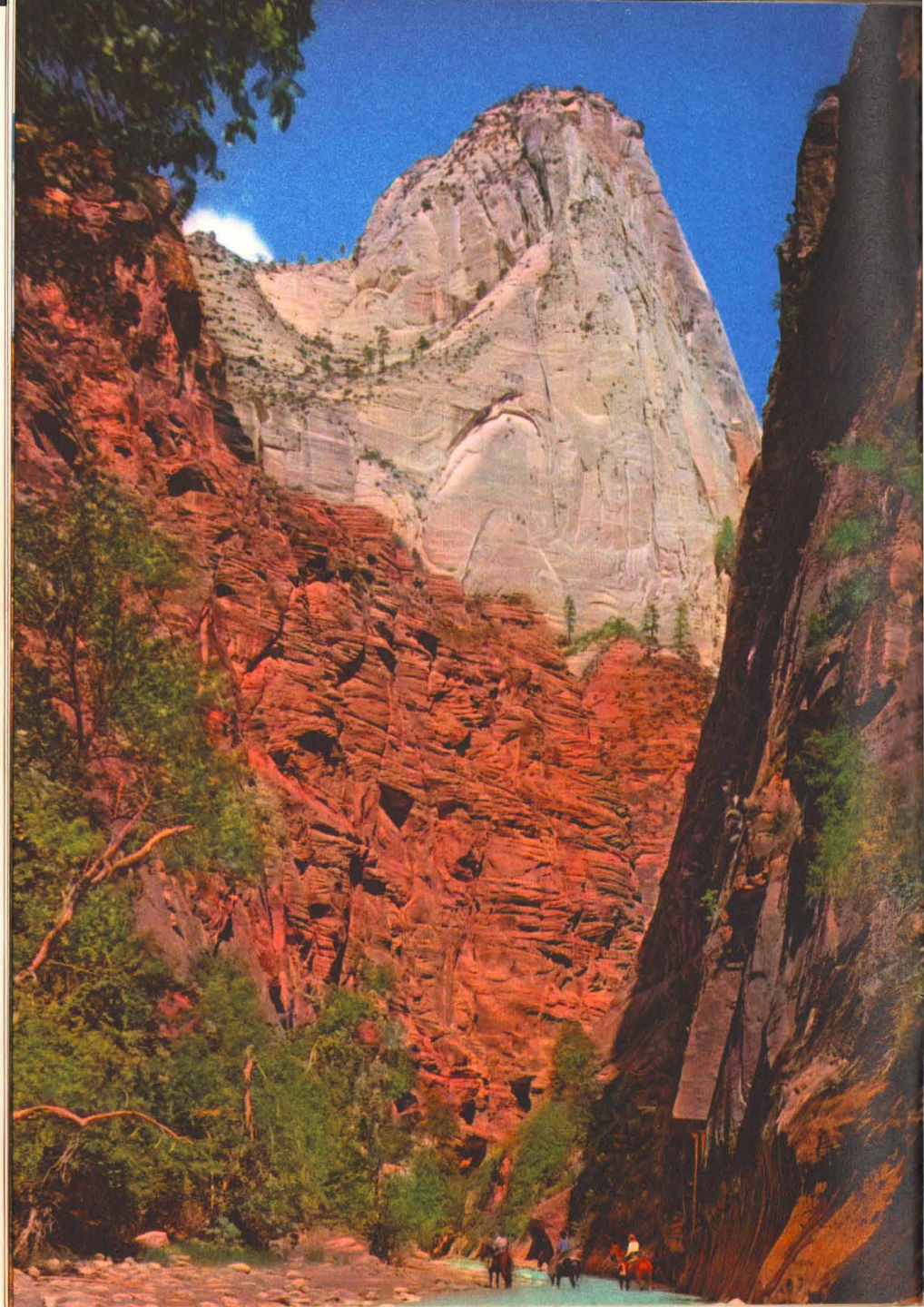
Leaving Zion your route is over famous Mt. Carmel Highway, a mile of which is within and paralleling the face of a great cliff. At intervals huge windows have been cut, disclosing scenes of majestic beauty. On the way to the Kaiabab National Forest

and the North Rim of Grand Canyon you cross the Prismatic Plains, one of the most exquisitely colored stretches of upland in America.

After viewing Zion from the green-carpeted valley, you can, if you wish, get a sure-footed western horse to take you up winding trails with a friendly guide to point out the peaks—tell you their descriptive names—and perhaps relate a few interesting incidents. These light-hearted, entertaining native westerners frequently introduce a note of gaiety that will add to the pleasure of your tour through these scenic regions.

But whether you view Zion from the Canyon floor or from the lofty trails which skirt its rims, you will share the enthusiasm of thousands who have preceded you.





KAIBAB

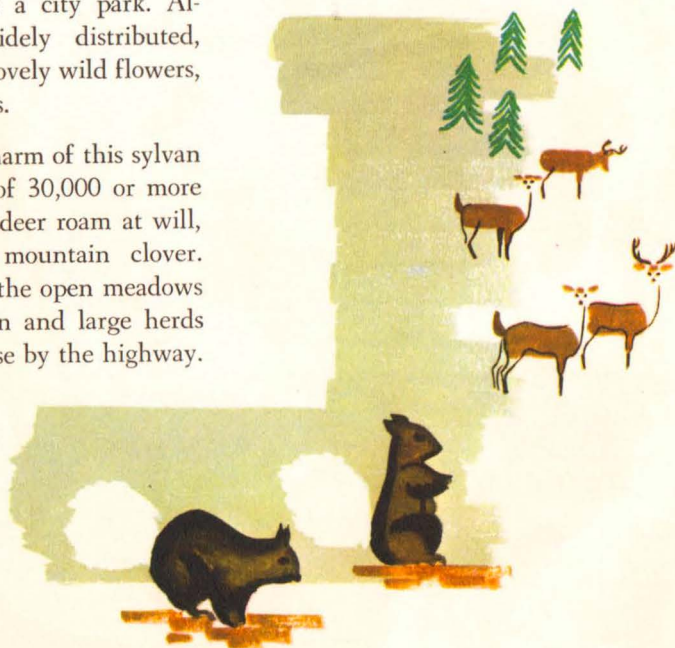
National Forest

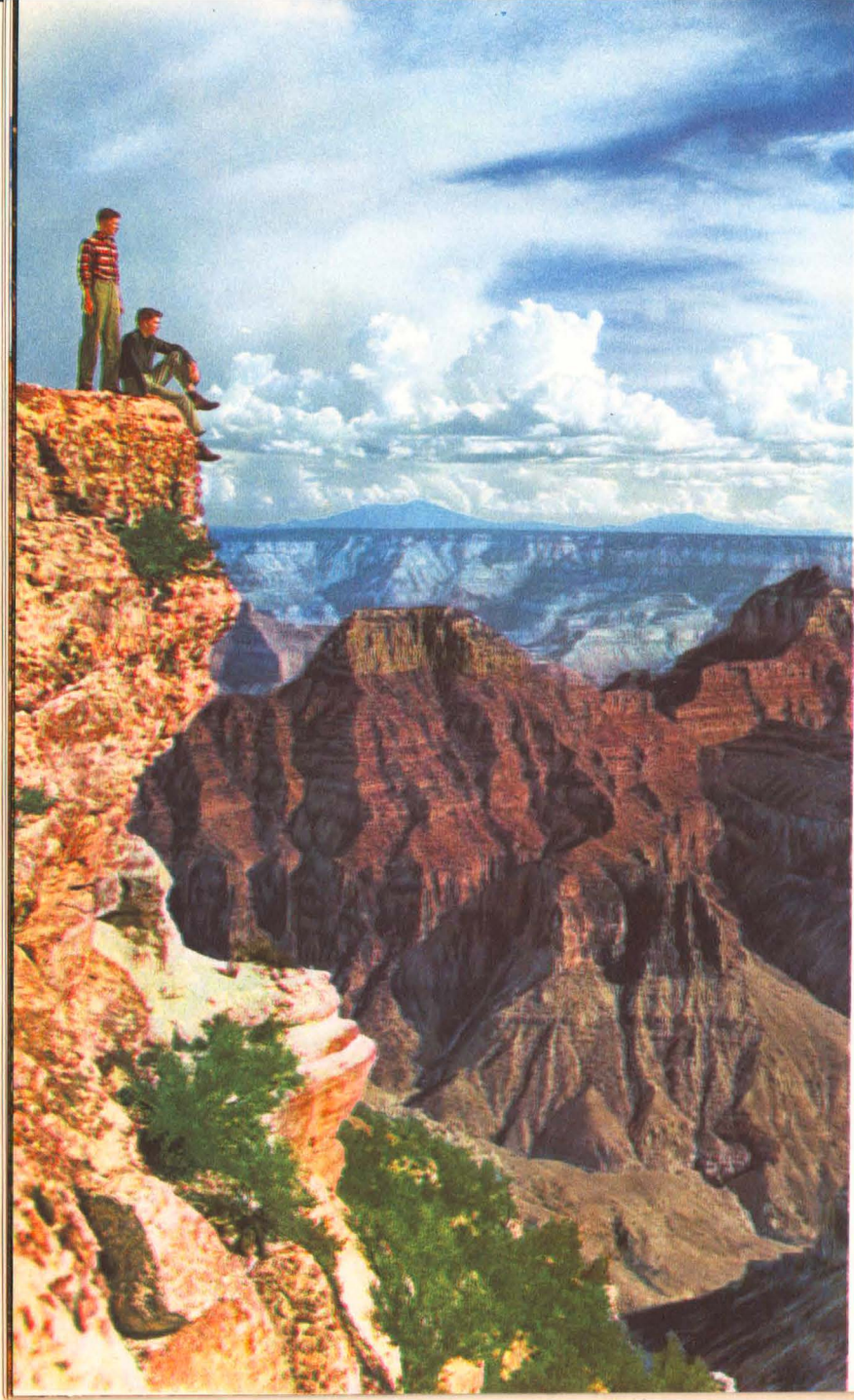
"Kaibab" is a Piute Indian word meaning "mountain-lying-down," a particularly apt description as it is actually a vast plateau, some fifty miles long and thirty-five miles wide, ranging in elevation from 7,500 to 9,300 feet. It contains various species of pine, fir and spruce, interspersed with charming aspen. Beneath its stately trees the grassy forest floor is generally free from underbrush and fallen timber—clean as a city park. Although not widely distributed, there are many lovely wild flowers, mosses and ferns.

To add to the charm of this sylvan setting, a herd of 30,000 or more black-tail, mule deer roam at will, cropping wild mountain clover. They gather in the open meadows in late afternoon and large herds may be seen close by the highway.

Also native to the Kaibab Forest is the white-tail squirrel, found nowhere else. It is about the size of a large grey squirrel, though shorter and stockier; is bluish-gray marked with brown; has long tufted ears and a broad feathery tail that is almost pure white. It feeds principally on the seeds and bark of the yellow pine.

The delightful ride through the cool glades of the charming Kaibab is a fitting prelude for the spectacle which awaits you at the North Rim of Grand Canyon.





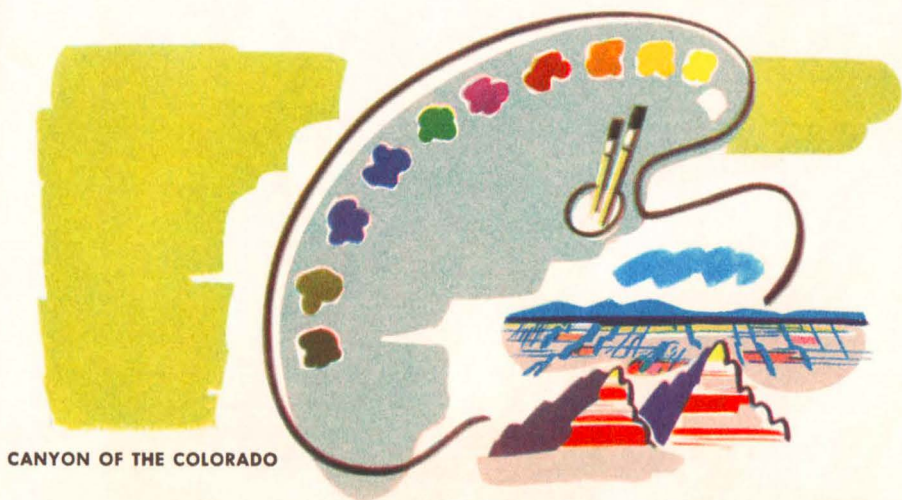
THE GRAND

The Grandeur of GRAND CANYON

The Grand Canyon may be described as a vast and intricate range of sunken mountains cut through a hundred miles of high plateau. Usually it is pictured as a colossal chasm, 280 miles in length, a mile deep and some twelve miles wide; but it is more precisely a measureless labyrinth of canyons with an array of magnificent architectural forms upthrust from their depths. And in the uttermost reaches deep down in the canyon you will see the turbulent Colorado River grinding away at the canyon walls, as it has for countless ages.

Some years ago a mathematician arrived at the startling conclusion that all of the world's people could be packed into the Grand Canyon. And, true enough, you will find its vastness overpowering.

product of nature's forces—wind • rain • sun



CANYON OF THE COLORADO



While one's first impression of Grand Canyon may be that it is a motionless mass of immensity, it is actually a constantly shifting kaleidoscope of color. It changes incessantly as the shadows alter, deepen, lengthen, fade and disappear. Numberless rich tones of gray, green, blue, red and mauve tint its mighty walls and temples, and, independent of these, the sunlight pours daily into the chasm a color parade of exquisite blues and purples, glowing reds and golds. At every hour of the day there is a different aspect of the Grand Canyon before the watcher.

Grand Canyon viewed from Point Sublime

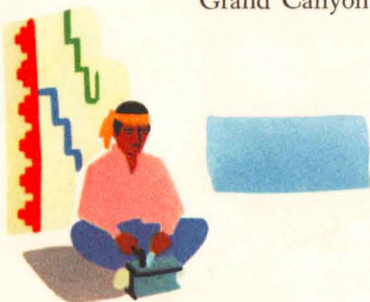


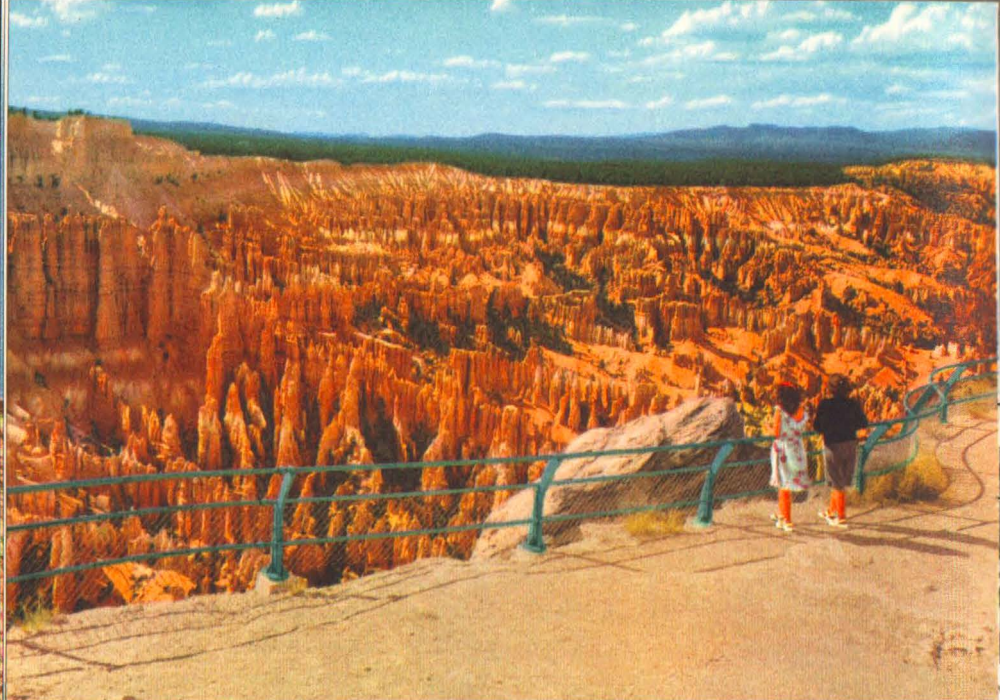


There are many vantage points on the North Rim from which the canyon may be surveyed. Motor trips of varying length may be made to Cape Final, Farview Point and Point Imperial, the latter being the highest place on the rim. From Cape Royal one is afforded some wonderful panoramas of the canyon as well as glimpses of the river. Some assert Point Sublime surpasses all other viewpoints.

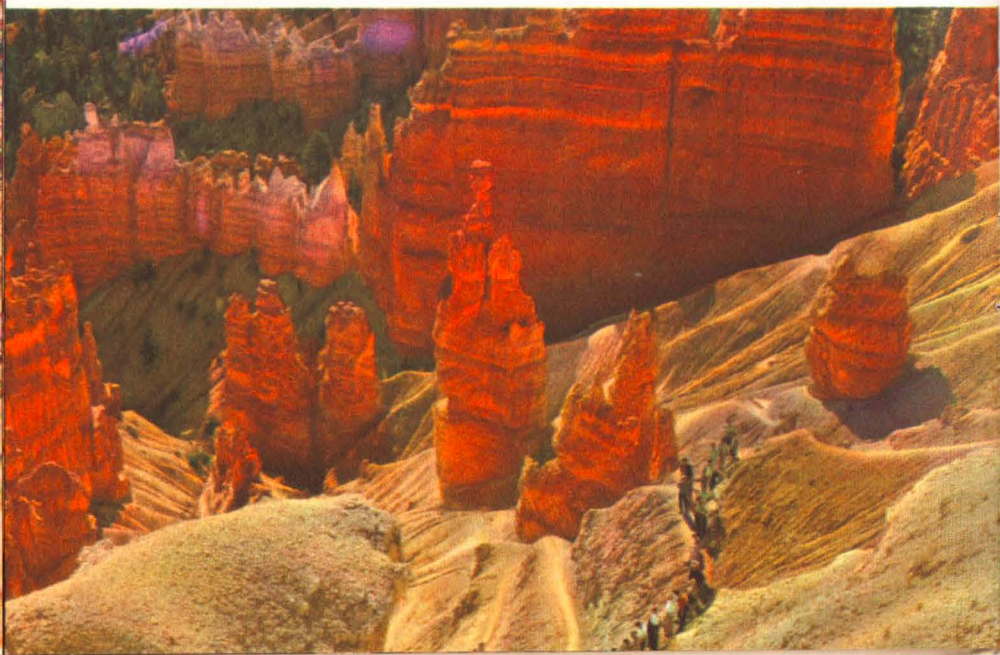
Perched on the very brink of the gorge at Bright Angel Point is Union Pacific's Grand Canyon Lodge. Your first view of the canyon will probably be from one of the broad windows in the lobby which frame magnificent views of the Canyon.

Well-trained saddle horses can be procured near Grand Canyon Lodge and guides are available for horseback trips along the rim and into the canyon, varying in length from a few hours to several days according to the visitor's inclinations.





The Flaming Bowl of

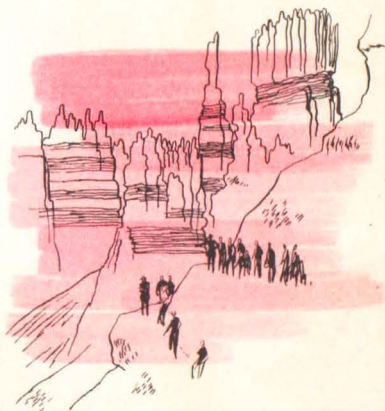


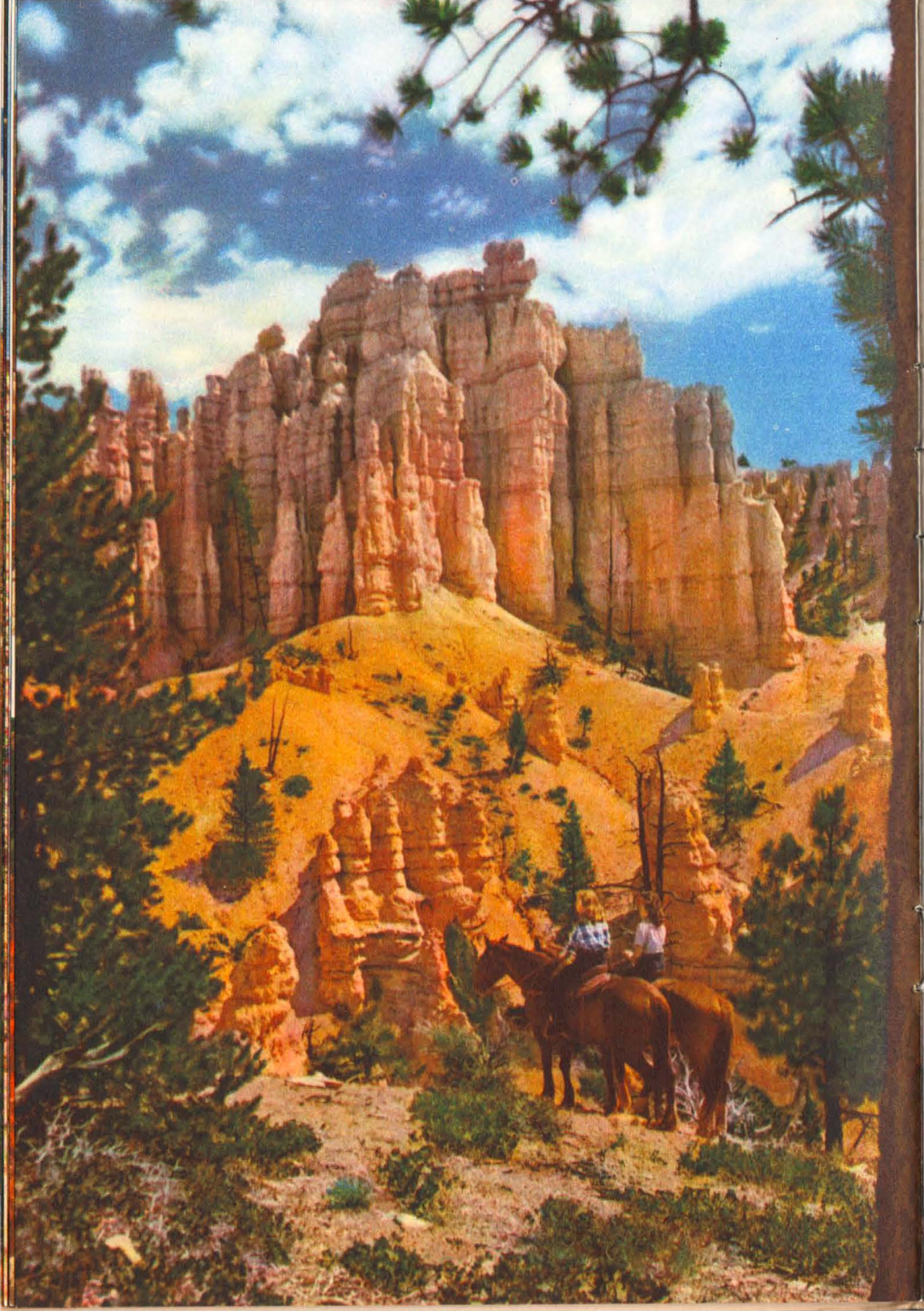
Leaving Grand Canyon your route again takes you through delightful Kaibab Forest. You have noted the contrast in natural architecture and coloring between Zion and Grand Canyon. Yet—strangely enough—you will find that Bryce Canyon is utterly unlike the other two regions. Though Bryce Canyon is immense, it is not bewildering in size and the enraptured beholder standing on its rim may readily understand its general plan. It is not a canyon in the usual sense, but an amphitheatre or basin

BRYCE CANYON

of horseshoe shape, graven one thousand feet deep into the pink and white limestone. It is approximately two miles wide and three miles long and its rim is 8,000 feet in elevation.

Bryce Canyon is a bewildering assortment of fantastic stone formations, alive with flaming, glowing color. There are statues of famous people; spires and minarets; cathedrals, castles, bridges, and countless other formations not to be compared with any familiar object.



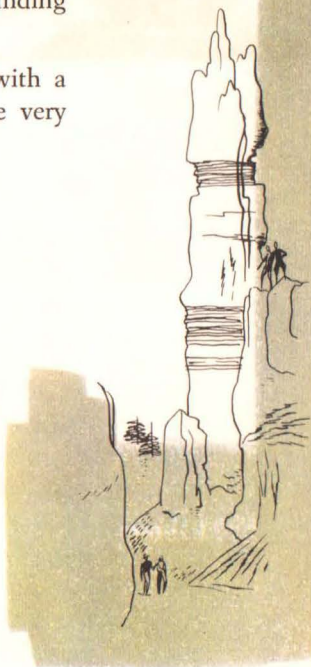
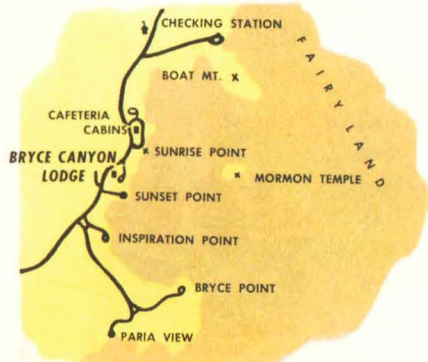


For best effects, Bryce should be seen from the west rim in the morning, the east rim in the afternoon, putting the formations between the beholder and the sun. Horseback and foot trails extend in both directions along the rim of the canyon from Bryce Lodge. Every visitor should spend at least a half a day on the trails in the depths of Bryce. Dainty figures as seen from the rim, assume huge proportions when viewed at close range. Bryce has a magnetic quality that will hold you intrigued for hours—a veritable fairyland of enchantment.

There is a spacious central lodge of rustic design at Bryce Canyon, and modern, comfortable guest cabins are hidden away among the surrounding pines.

You will leave Bryce Canyon reluctantly, with a solemn promise to yourself to return at the very first opportunity.

From the trails the beauty of Bryce is revealed in form and color





CEDAR BREAKS National Monument

"Circle-of-painted-cliffs" was the apt descriptive name given to Cedar Breaks by the Indians. The Cedar Breaks are a series of vast amphitheatres or chasms eroded to a depth of 2,000 feet, and covering an area of approximately sixty square miles.

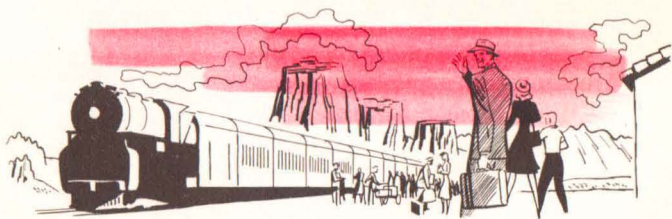
Within its yawning labyrinths are thousands of grotesque and magnificent architectural forms, tinted with all the colors of the spectrum. Pink or terra cotta is dominant, though, at times, orange tones seem to prevail. There are shades of chocolate, yellow, rose, mulberry, lavender and purple.



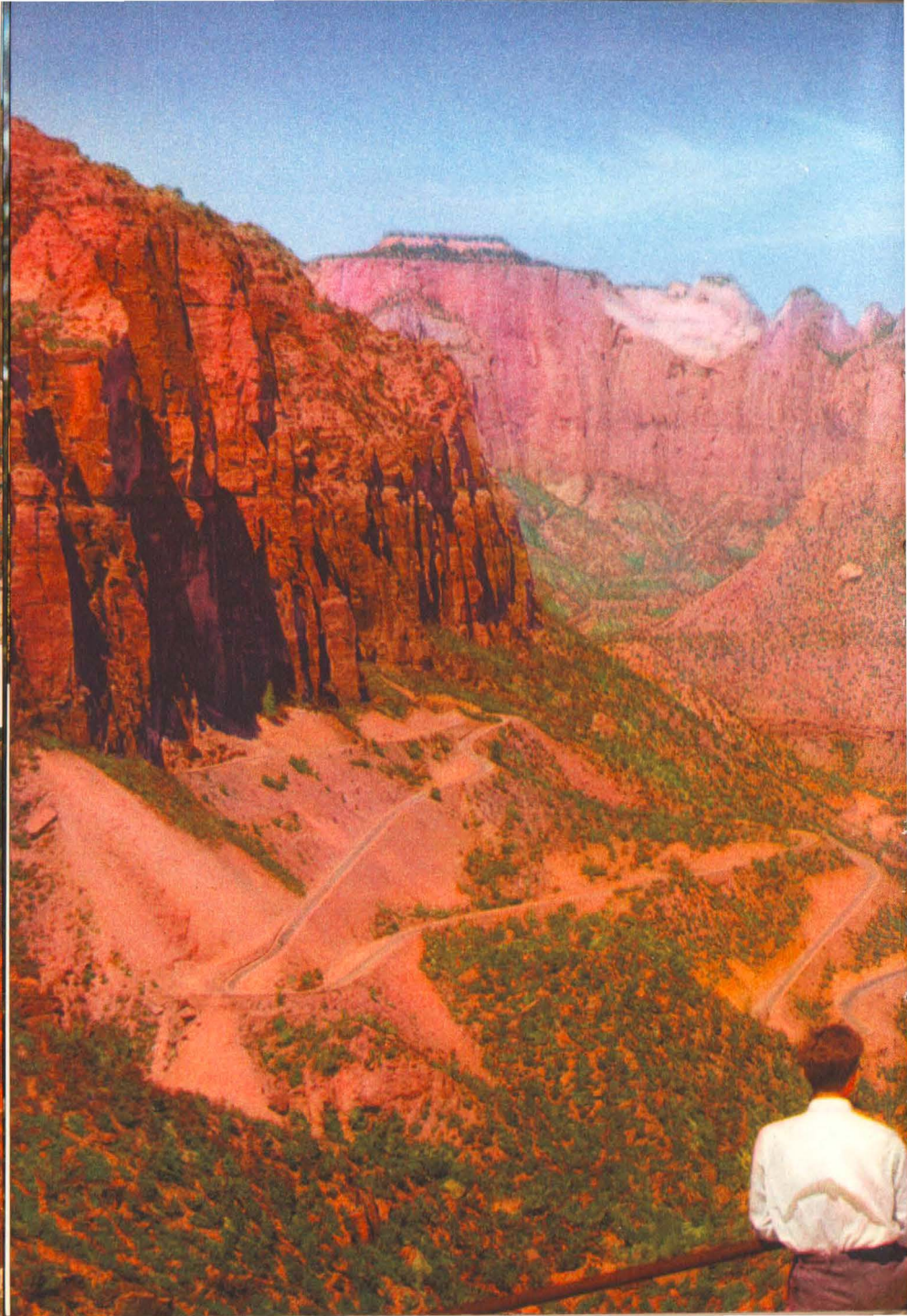
A few trails lead into the deep-slashed basins and the descent can be made with guide.

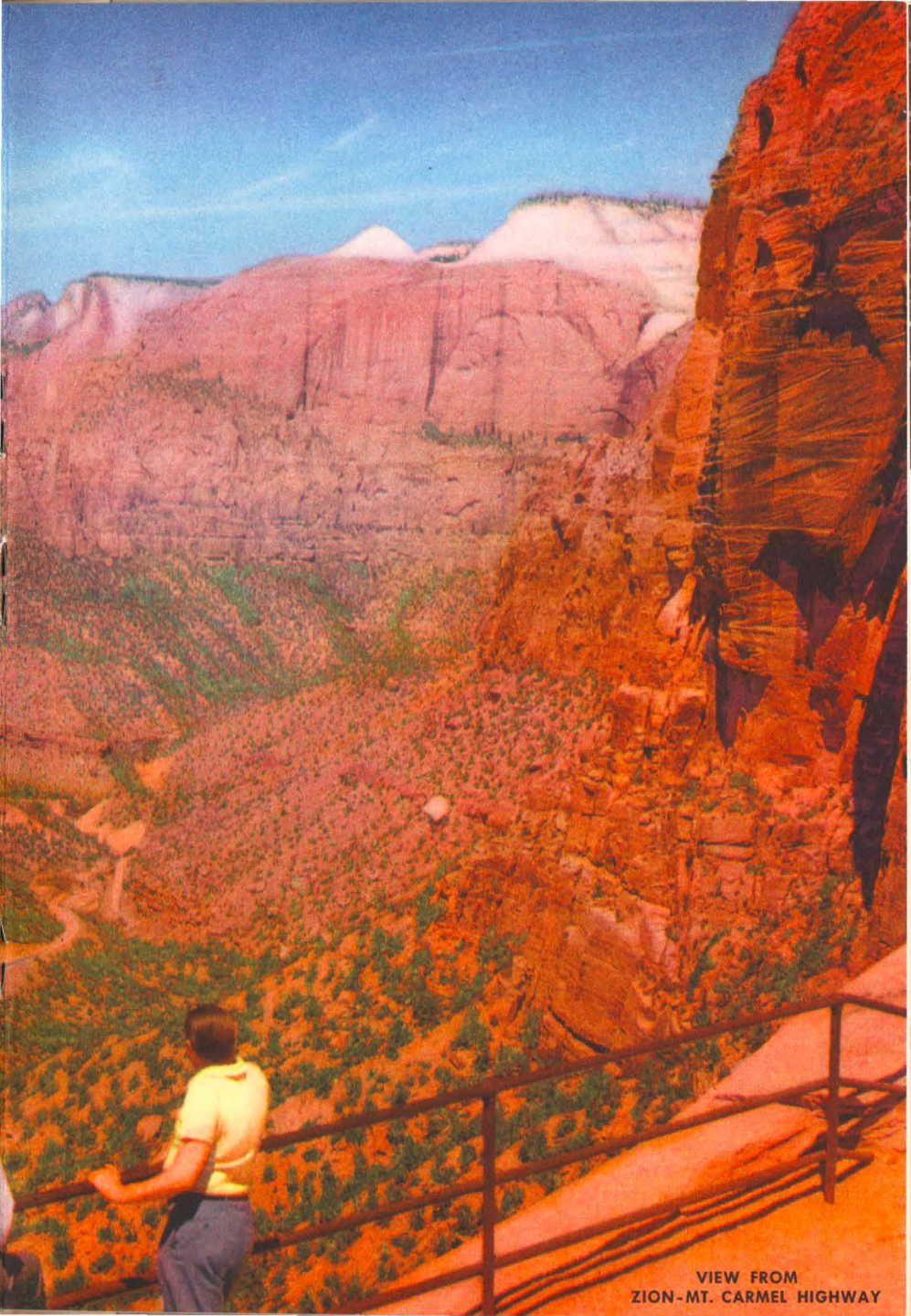
Conspicuous in the welter of forms below are long, writhing, dragon-like figures of pure white; and huge sprawling masses resembling blood-red dinosaurs. For all its beauty, the place might appropriately have been the dwelling place of prehistoric monsters. The panoramas westward across the desert into the sunset are notably fine. As you stand on the rim of Cedar Breaks, you will realize that here Nature has dealt out beauty with a lavish hand, for, in vastness . . . in variety of color . . . in wild grandeur, Cedar Breaks is the greatest of Utah's painted amphitheatres.

In the forest, a short distance back from the rim, is Union Pacific's handsome, rustic Cedar Breaks Lodge. In addition to a large dining room, there are lounging and rest rooms, as well as a curio and souvenir shop.



Regretfully you leave Cedar Breaks for the short ride back to Cedar City and your train . . . the end to a tour of constant delight. You will take with you a book of treasured memories . . . each page brilliantly illuminated with the vivid, unforgettable color of the Southern Utah-Northern Arizona National Parks.





VIEW FROM
ZION-MT. CARMEL HIGHWAY



Flowers

Adorning the canyon floors and surrounding areas is the plant life of the region, sprinkling the green carpeting with spots of brilliant color.

To visitors from many parts of the country, the flowers are strange and interesting . . . frequently the subject for sketch-pad, canvas or color film.

In the blooming season, ranging from April to September, Utah's wild flowers present a vivid, flashing pageantry. Most of the flowers are found in canyons and on mountain-sides, but the Indian paint-brush grows in sage-brush country.

Some of the species to catch and hold the eye are strawberry cactus, dogtooth violets, lupine, huge star-like columbines, larkspur, and bluebonnet. Other varieties found are ferns and mosses, sego lilies, orchids, buttercups, phlox, wild



roses, violets, fireweed, locoweed, prickly poppies, asters, blue flax, mentzelia, shooting stars, Indian bread-root, wild licorice, mountain mahogany, wild apples, currants, raspberries, strawberries, gooseberries, Arizona and Oregon wild grapes, goldenrod, monkey flowers, cardinal flowers, catnip, snowberries, marigolds, yarrow, clematis, daisies, and white blooms of the sacred datura, anciently used by the Indians in religious ceremonies.

The fall and winter rains of Arizona also bring a gorgeous floral blooming, painting bright, gay colors on mountain, mesa, and desert. Miles of golden poppies and Mariposas spread over the foothills.

The temperate area of Northern Arizona is thickly timbered, and countless varieties of wild flowers abound. Here you will find a tapestry of fragrance, such as lilies, iris, buttercups, wild roses, sweet peas, honeysuckles, and bleeding hearts.

In the desert areas may be seen prickly pears, pin-cushion cacti, yucca and torchweed which grow among the sage and rabbit brush.



Zion Lodge

Accommodations

A homey, comfortable spot to relax . . . delicious, wholesome food, tastefully served . . . a good night's rest . . . are always welcome after a day's adventure in the West. You'll find a variety of attractive

and modernly-furnished guest accommodations, reasonably priced, at all three National Parks—Zion, Bryce and Grand Canyon. All rates are approved by the National Park Service.





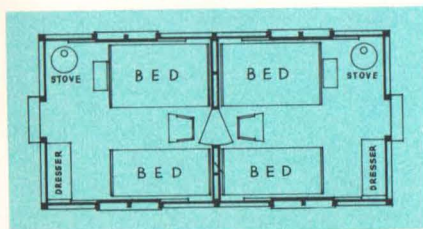
Bryce Canyon Lodge

True western hospitality . . . informal entertainment and dancing in evening hours . . . enhance your enjoyment of the tour through the parks. A vacation in these lands of boundless beauty has an appeal for persons of all ages.

STANDARD GUEST CABIN



FLOOR PLAN

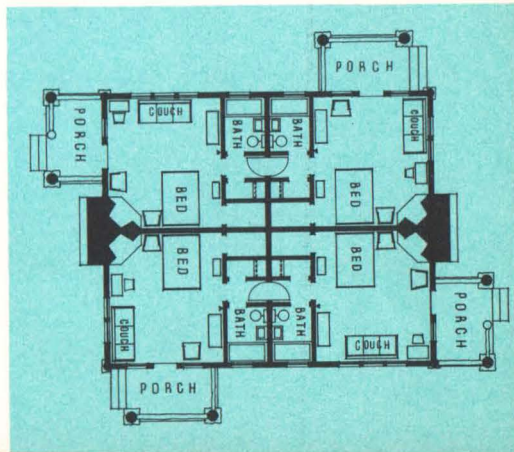


DELUXE GUEST LODGE



FLOOR PLAN

25





Sidewalks lead to the deluxe lodges, and well-kept lawns add to the charming setting.



Your "home" in the Utah-Arizona Parks is a picturesque cabin, set among the pines, and just a stroll from the main lodge building where meals are taken. Maid service is provided and an obliging attendant will kindle your fire in the morning, if you wish.

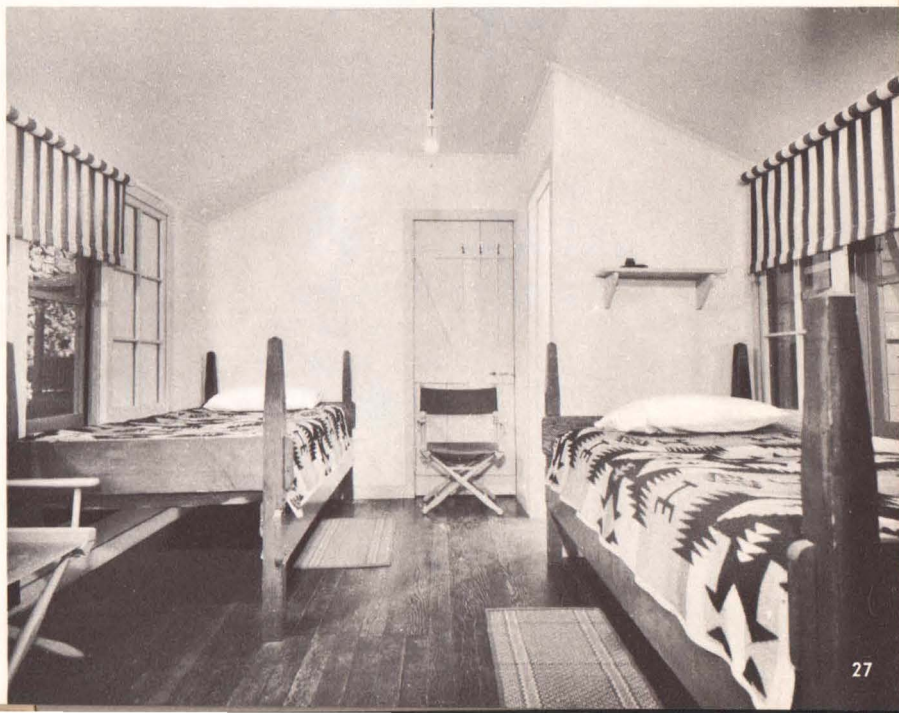
Interior of deluxe lodge, showing double bed and day-bed, with private bath beyond.

"Oh, give me a home . . ."



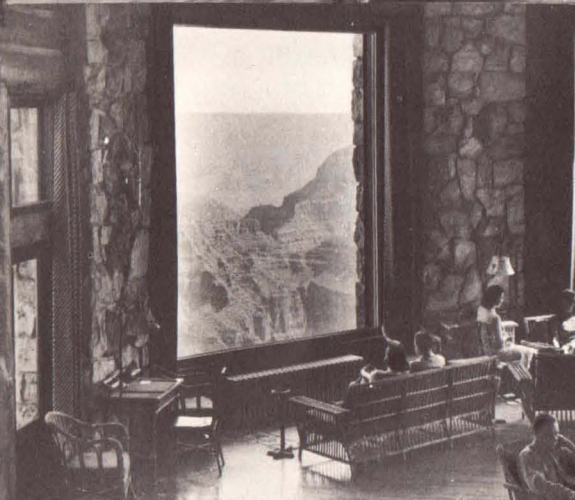
Another interior view of deluxe lodge showing cozy fireplace arrangement.

Interior of standard cabin—an inviting retreat after a day in the open.





A corner of the interesting curio shop at Grand Canyon Lodge.



The broad windows of the Lodge lounge overlook the Grand Canyon.

Grand Canyon dining room, where fine food is enjoyed in pleasant surroundings.



From the terrace adjoining Grand Canyon Lodge, guests absorb the beauty of the Canyon.

The Utah-Arizona Parks act like a tonic, soothing tired nerves and bringing peace of mind to all who visit them. Reluctantly you will take leave of this sanctuary, vowing to return as soon as possible.



Zion Park swimming pool suggests a cooling dip.



Employees serenade departing guests.



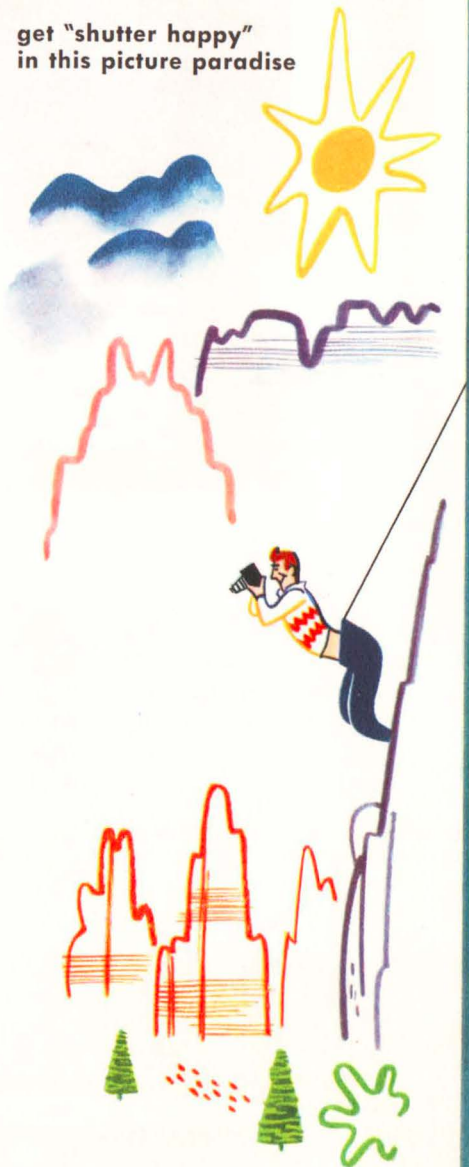
get "shutter happy"
in this picture paradise

PHOTOGRAPHY has an irresistible appeal to visitors to the Utah-Arizona National Parks. In this land of color a camera is indispensable.

For black and white photography a panchromatic film will give the most satisfactory results. Use of a medium yellow filter will give pictures of more brilliance and emphasize clouds. For occasional use and a more dramatic effect, a heavy yellow or light red filter will darken the skies and point up high-lights. In general, a filter is of more use at Grand Canyon where haze is prevalent.

Exposures on fast panchromatic film will usually run one one-hundredth of a second at a diaphragm stop of F/16 to F/22. Care must be taken not to over-expose.

It has been said color film must have been made for this region. No filter is necessary, although many people use a haze filter or light ultra violet filter. Generally, exposure for color film is a fiftieth of a second at about F/8. The exposure is governed largely by the shadow area, the amount of green foliage or the general key of the picture. Therefore, Bryce Canyon views under bright sun will ordinarily take less exposure than views at Zion, where invariably there is more foliage. The filmer will find beautiful flowers and insects, birds and plenty of animal life; chipmunks and brown mantled ground squirrels at Bryce, white-tail Kaibab squirrels and deer at Grand Canyon.





LET'S GET TECHNICAL



ADVICE TO MOVIE MAKERS—Hold the camera steady. Don't panoram too much. If you have a camera which will take a wide angle lens you will find considerable use for this in Zion. Don't shoot too long on one scene. Effective shots can be made from a moving car. Run the car at about 20 miles per hour and the camera at 48 frames for best results. If you are shooting through the windshield or window of the bus, be careful to avoid reflections.

A pola screen is of great value in photographing the Utah-Arizona Parks. Use of a pola screen will increase the exposure but will enrich colors, give glorious cloud effects and combat the haze which some times renders picture-taking rather difficult.

BRYCE CANYON—Best photographed in the morning and afternoon. Light flat and dull at mid-day. Excellent pictures from Bryce Point at sun-up, if you are an "early bird." Good shots into Canyon from Rim near Sunset Point from eight to eleven A.M. Good shots from Rim in late afternoon. Good shots of Escalante Mountain just before sundown. Chipmunks and squirrels are found around cabins and at the woodpile near deluxe cabins. Hummingbirds are found wherever thistles grow, mostly alongside the road. Hiking and horse trips into Canyon produce excellent pictures and should not be missed. Use people or horses in some pictures to give scale.

GRAND CANYON — Best photographed in late afternoon. Fairly good morning shots may be made from Cape

Royal. Excellent roads lead to many good view points along the Rim. Cape Royal, Vista Encantada, Two River Junction, Point Imperial, Bright Angel Point and Point Sublime offer fine shots of Canyon in late afternoon. Dramatic and colorful effects can be obtained by working just before sundown. A short walk from the lodge leads to Bright Angel Point and many fine Canyon views. Nature walk goes to this point in the morning, offering opportunity to get group of people in picture.

There are excellent opportunities for flower and wild-life pictures at Grand Canyon. Good shots of deer and white-tail Kaibab squirrel can be obtained in vicinity of cafeteria. Bait the squirrels into camera range with peanuts. Deer are shy but not wild. Walk up on them slowly.

ZION PARK—Many varied pictures can be made in this Park. All formations along the west canyon wall are best photographed in morning light and east wall gets afternoon light. Great White Throne through the Saddle is best around two o'clock. Temple of Sinawava offers good afternoon shots. Narrows Trail leads from Temple to a dramatic view of Mountain of Mystery at the end of the trail. Sun lights this scene for only a few minutes each day in early afternoon.

Hike up trail to Angels Landing produces some excellent views looking into Canyon. Horse trails lead to both rims and offer wide variation of dramatic and interesting shots. Many beautiful flowers bloom in Zion.

"Let's see! What to take?"



As the quantity and variety of wearing apparel largely depends on your final destination—in case your trip to the National Parks is just a “stopover”—these suggestions are limited to articles you’ll find convenient to have in the Parks.

And, remember, one advantage of a rail trip is that you need carry with you only a small bag containing whatever you may need on the train. The remainder of your luggage can be assigned to the baggage car, ready to pick up on your arrival.

On the train . . .

one small bag will carry dressing robe, slippers, and a few other articles of apparel you will need—together with handkerchiefs and toilet articles.

FOR HER

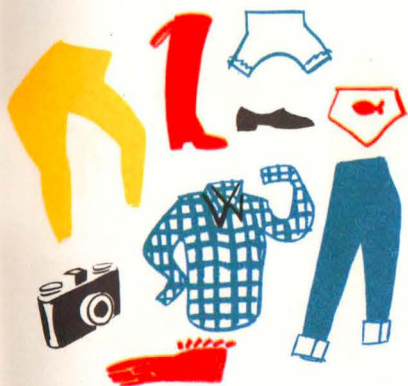


FOR HIM



Don't forget . . .

those things you will want if hiking or riding. And, remember, informality is the keynote for wearing apparel in these western regions.



You may wish to buy . . .

one or more of the colorful articles of native workmanship, available at the Lodges in the Parks, as mementos of your trip.





Relax

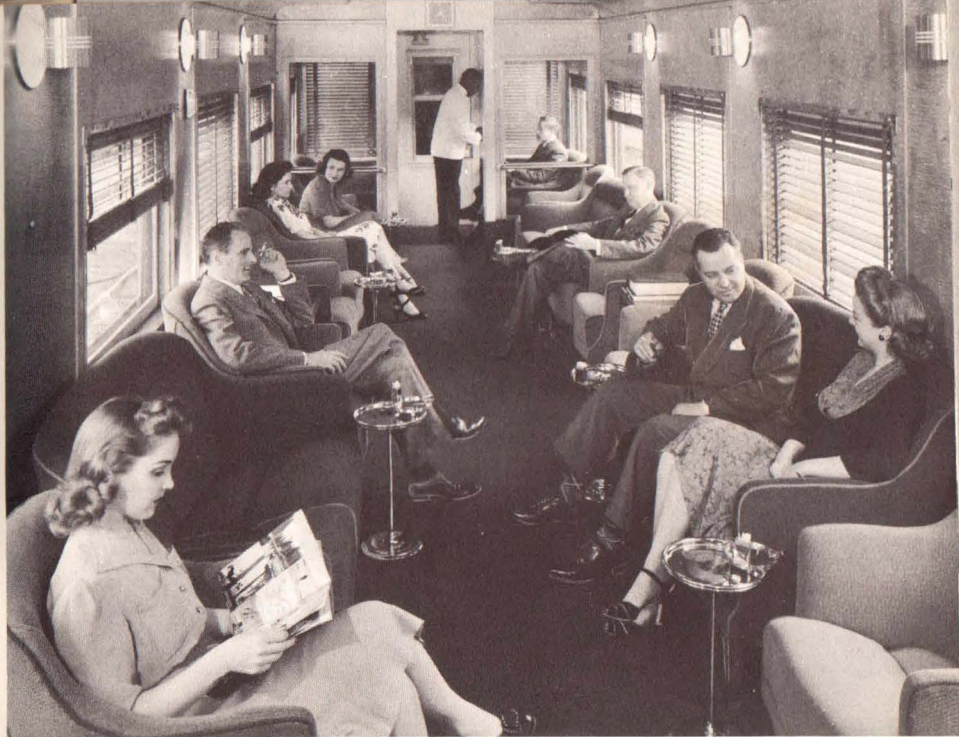
*The completely enjoyable vacation
Begins and ends with relaxation.*

That's the beauty of train travel! You can relax from the moment you step aboard. The man at the throttle will see that you get to your destination safely and on time. Meantime you can enjoy air-conditioned comfort . . . move around as you wish . . . partake of meals that appeal . . . watch the passing panorama . . . and end the day in restful carefree slumber. Your Union Pacific train trip will be a delightful highlight of your vacation. So, be specific—say "Union Pacific."

34

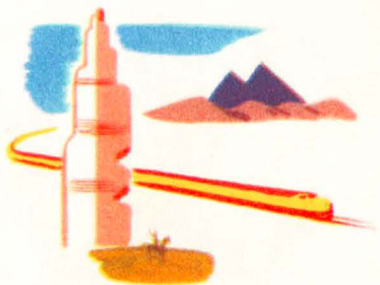
Relax in a comfortable lounge car.





The hours pass pleasantly and all too quickly.

Union Pacific's fleet of fine trains . . . sleek Streamliners, operating every day, and modern, fast Limiteds provide a wide variety of sleeping car accommodations and adjustable sleep-easy coach seats . . . whichever you desire. Smart dining cars and comfortable club-lounge cars add to the enjoyment of the trip. On smooth-riding Union Pacific trains your vacation will begin and end—as it should—in pleasant relaxation.





During the Parks season Union Pacific operates through sleeping cars from Salt Lake City, and from Los Angeles to Cedar City, Utah, the gateway and the starting point of the circle tour of the Parks. In addition, comfortable motor buses meet trains at Lund, Utah, on the main line, to pick up visitors enroute to the Parks who do not hold space in these through sleeping cars.





Coaches have deep-cushioned, reclining seats.

ESCORTED ALL-EXPENSE TOURS

The Department of Tours of the Union Pacific and North Western Railroads operates delightful all-expense, escorted tours to the Southern Utah-Northern Arizona national parks described in this book. Tours are also operated to Yellowstone National Park, and combination tours take in Yellowstone as well as the Southern Utah-Northern Arizona national parks. There are also delightful tours to Colorado, including Rocky Mountain National Park, Denver and Colorado Springs. Tours to California include a stop-over at Las Vegas, Nevada, with side trip to gigantic Hoover Dam; Los Angeles, San Diego, Old Mexico, Catalina Island, Yosemite National Park and San Francisco.

These low-cost tours include every necessary item of expense, including all meals. In addition, a courteous, well-informed escort accompanies each party to relieve you of all arrangements and travel details. All you need do is sit back and enjoy every minute of your vacation. For detailed information and literature, address Department of Tours, C&NW-Union Pacific, 148 South Clark St., Chicago 3, Illinois, or ask any Union Pacific representative.

GENERAL INFORMATION

BAGGAGE Free baggage allowance on tours from Cedar City will be twenty-five pounds for each full ticket and each half ticket. Baggage in excess of twenty-five pounds will be charged for at rate of five cents per pound, which applies regardless of distance, on any tour shown. Storage charges on hand baggage and trunks checked to any point on the Union Pacific Railroad on route of ticket will be waived for the period of time consumed while the owner is making side trip (when necessary), and park tour.

MAIL Mail for persons traveling through the Parks should be addressed to the Lodge and Post Office at which it is expected they can be reached. The correct address of each follows:

Bryce Canyon National Park Lodge,
Bryce Canyon Post Office, Utah.

Zion National Park Lodge, Zion Na-
tion Park Post Office, Utah.

Grand Canyon Lodge—North Rim Post
Office, Arizona.

El Escalante Hotel, Cedar City, Utah.

CURIO SHOPS Shops selling magazines, cigars, cigarettes, camera supplies, pictures, confectionery, etc., are maintained at Zion, Grand Canyon, Bryce Canyon, Cedar Breaks and Kanab Lodge Centers.

REGISTERED NURSES The services of a registered nurse are available at the Lodges in each of the three National Parks.

KODAK DEVELOPING AND PRINTING At Zion Lodge, Grand Canyon Lodge and Bryce Canyon Lodge. Developing and printing can

be arranged for at reasonable rates. A complete line of films is carried, including Cine-Kodak and Kodachrome. Leica film in both black and white and Kodachrome is regularly carried in stock.

BARBER SHOPS Barber shop facilities are available at Bryce Canyon, Grand Canyon and Zion Lodge Centers.

TELEGRAPH AND TELEPHONE

Service is available at all Lodge Centers, and at El Escalante Hotel, Cedar City.

CHURCH SERVICES At Cedar City Presbyterian and Latter Day Saints services held each Sunday, and Catholic services at 11:15 a. m., each Sunday. There is also daily Catholic service at 7:00 a. m.

ZION Protestant services at Zion Lodge each Sunday morning 9:00 a. m., conducted by employees. Visiting clergymen of any denomination, when present, are invited to conduct these services. Catholic services Sunday at 6:45 a. m.

GRAND CANYON Protestant services at the Lodge each Sunday morning, 10:00 a. m., conducted by employees. Visiting clergymen of any denomination, when present, are invited to conduct these services. Catholic services Sunday at 6:45 a. m.

BRYCE CANYON Protestant services each Sunday at 9:00 a. m., conducted by employees. Visiting clergymen of any denomination, when present, are invited to conduct these services. Catholic services Sunday at 11:15 a. m.

PACIFIC NORTHWEST



Other Regions

SUN VALLEY IDAHO



In addition to the Southern Utah-Arizona National Parks, Union Pacific serves a number of other wonderlands—as pictured on this page—that annually attract thousands of vacationists.

Any Union Pacific representative will be happy to help you with your vacation plans.

See list of Union Pacific offices on following page.

YELLOWSTONE NAT'L PARK



GRAND TETON NAT'L PARK



Let's GO!



COLORADO



CALIFORNIA





PLAN YOUR TRIP WITH EXPERT HELP

Let one of Union Pacific's courteous and informed representatives assist you with the details of your trip. There is no cost to you and you will find his helpful suggestions will add materially to your enjoyment of the trip. Write, phone, or call at any of the Union Pacific offices listed below.

Aberdeen, Wash.	3 Union Pass. Sta.
Alhambra, Cal.	51 So. Garfield Ave.
Astoria, Ore.	438 Commercial St.
Atlanta 3, Ga.	1432 Healey Bldg.
Bend, Ore.	112 Oregon Ave.
Birmingham 3, Ala.	701 Brown-Marx Bldg.
Boise, Idaho	Idaho Bldg., 212 N. 8th St.
Boston 8, Mass.	294 Washington St.
Bremerton, Wash.	228 First St.
Butte, Mont.	609 Metals Bank Bldg.
Cheyenne, Wyo.	120 W. 16th St.
Chicago 3, Ill.	1 S. LaSalle St.
Cincinnati 2, O.	303 Dixie Terminal Bldg.
Cleveland 13, O.	1407 Terminal Tower
Dallas 1, Tex.	2108 Mercantile Bank Bldg.
Denver 2, Colo.	535 Seventeenth St.
Des Moines 9, Ia.	407 Equitable Bldg.
Detroit 26, Mich.	612 Book Bldg.
East Los Angeles, Cal.	5454 Ferguson Dr.
Eugene, Ore.	201 Ardel Offices
Fresno 1, Cal.	207 Rowell Bldg.
Glendale 3, Cal.	404 1/2 N. Brand Blvd.
Hollywood 28, Cal.	6702 Hollywood Blvd.
Huntington Park, Cal.	7002 Pacific Blvd.
Kansas City 6, Mo.	2 E. Eleventh St.
Las Vegas, Nev.	Union Pacific Station
Lewiston, Ida.	Room 7, Union Depot
Lincoln 8, Nebr.	130 S. 13th St.
Long Beach 2, Cal.	144 Pine Ave.
Los Angeles 14, Cal.	Union Pacific Bldg.
Memphis 3, Tenn.	1720 Sterick Bldg.
Milwaukee 3, Wis.	814 Warner Bldg.
Minneapolis 2, Minn.	890 Northwestern Bank Bldg.
New Orleans 12, La.	504 Canal Bldg.

New York 20, N. Y.	Suite 350, Rockefeller Center, 626 Fifth Ave.
Oakland 12, Cal.	215 Central Bank Bldg.
Ogden, Utah	Ben Lomond Hotel Bldg.
Omaha 2, Nebr.	Corner 15th and Dodge Sts. or 1614 Farnam St.
Pasadena 1, Cal.	Union Pacific Station
Philadelphia 2, Pa.	904 Girard Trust Bldg.
Pittsburgh 22, Pa.	1419 Oliver Bldg.
Pocatello, Ida.	Union Pacific Station
Pomona, Cal.	Union Pacific Station
Portland 5, Ore.	701 S. W. Washington St.
Reno, Nev.	209 American Bldg.
Riverside, Cal.	Union Pacific Station
St. Joseph 2, Mo.	516 Francis St.
St. Louis 1, Mo.	1223 Ambassador Bldg.
Sacramento 14, Cal.	217 Forum Bldg.
Salt Lake City 1, Utah	Hotel Utah, Main and So. Temple Sts.
San Diego 1, Cal.	320 Broadway
San Francisco 2, Cal.	Geary at Powell St.
San Jose 7, Cal.	206 First Nat'l. Bank Bldg.
San Pedro, Cal.	805 S. Pacific Ave.
Santa Ana, Cal.	305 North Main St.
Santa Monica, Cal.	307 Santa Monica Blvd.
Seattle 1, Wash.	1300 Fourth Ave.
Spokane 8, Wash.	727 Sprague Ave.
Stockton 6, Cal.	207 California Bldg.
Tacoma 2, Wash.	114 S. Ninth St.
Toronto, Ontario	201 Can. Pac. Bldg.
Tulsa 3, Okla.	823 Kennedy Bldg.
Walla Walla, Wash.	1st Natl. Bank Bldg.
Washington 5, D. C.	600 Shoreham Bldg.
Winston-Salem 3, N. C.	632 Reynolds Bldg.
Yakima, Wash.	Union Pacific Bldg.

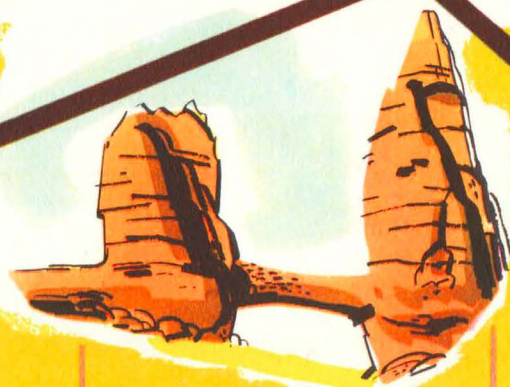
UNION PACIFIC RAILROAD





HERB BREAKS
NATIONAL MONUMENT

ZION
NATIONAL
PARK



BRYCE CANYON
NATIONAL PARK



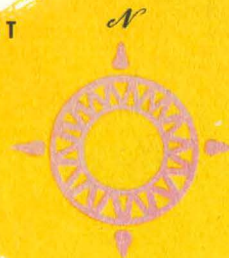
KANAB

FREDONIA

KAIBAB NATIONAL FOREST



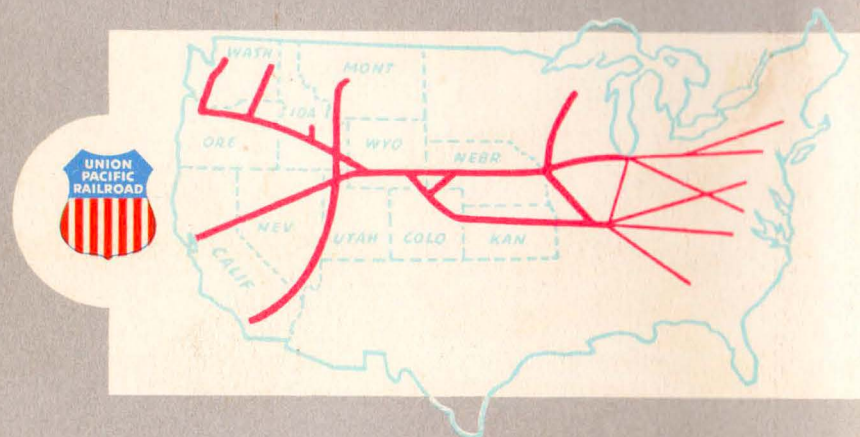
GRAND CANYON
NATIONAL PARK





REGIONAL MAP

THE SEASONED TRAVELER GOES BY TRAIN



FOR DEPENDABLE TRANSPORTATION

Be Specific ... Say "UNION PACIFIC"