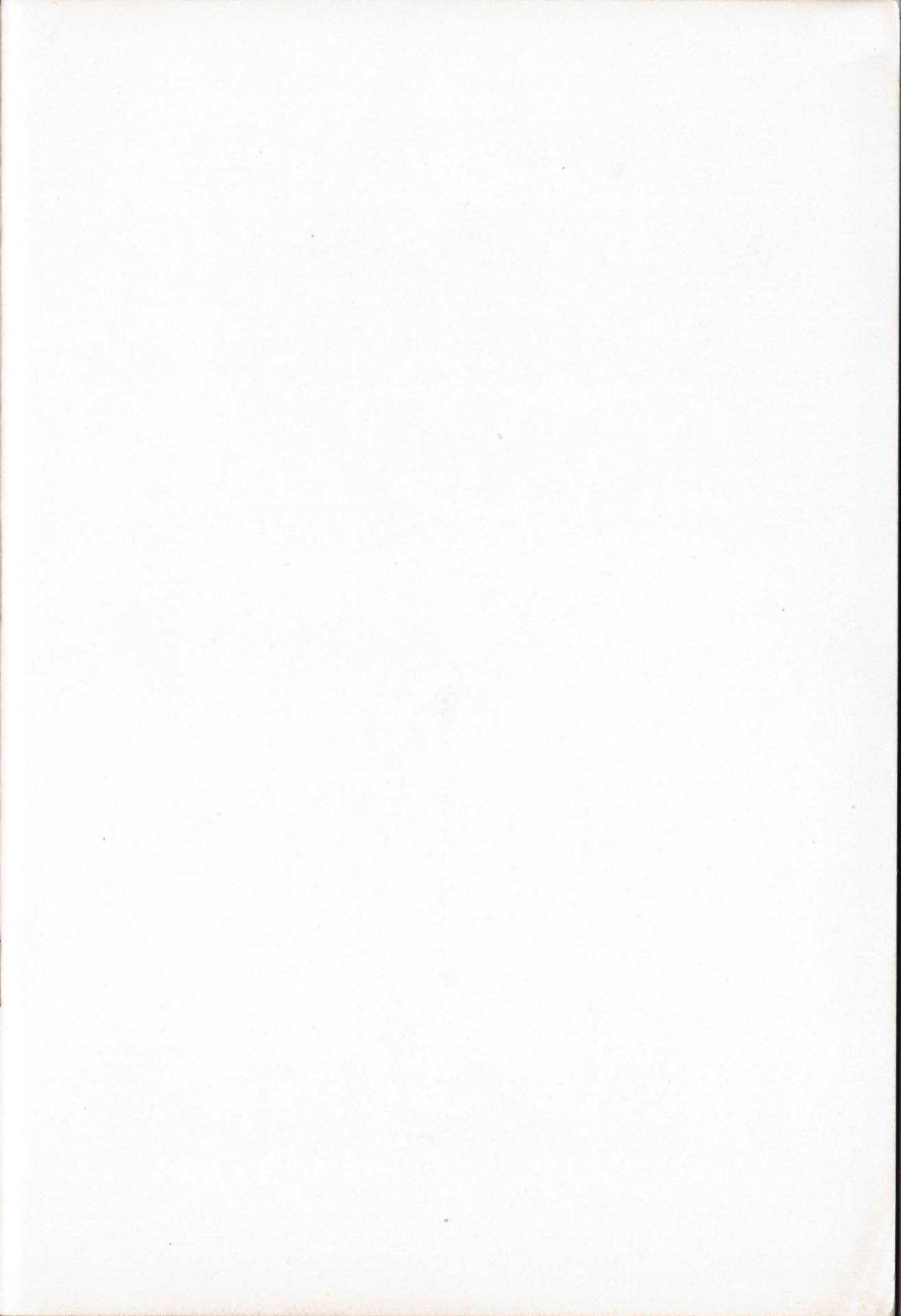


YELLOWSTONE NATIONAL PARK



YELLOWSTONE
NATIONAL
PARK



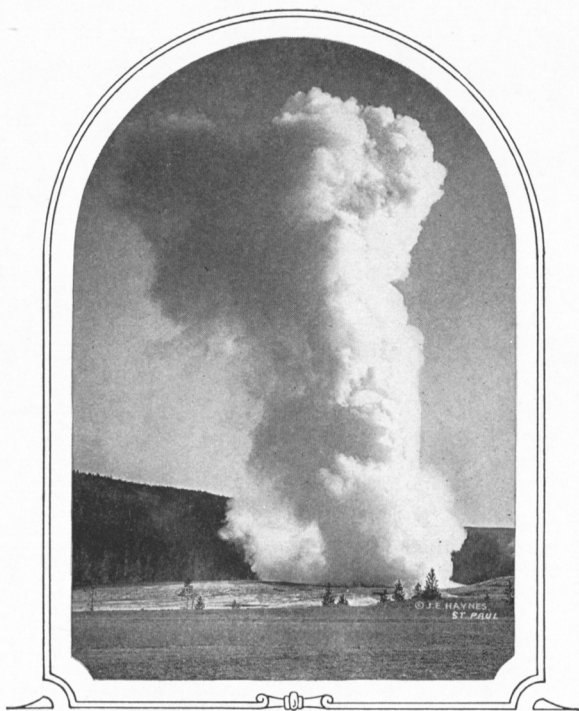


COPYRIGHT 1929 BY
C. J. COLLINS
GENERAL PASSENGER AGENT
UNION PACIFIC SYSTEM
OMAHA, NEB.

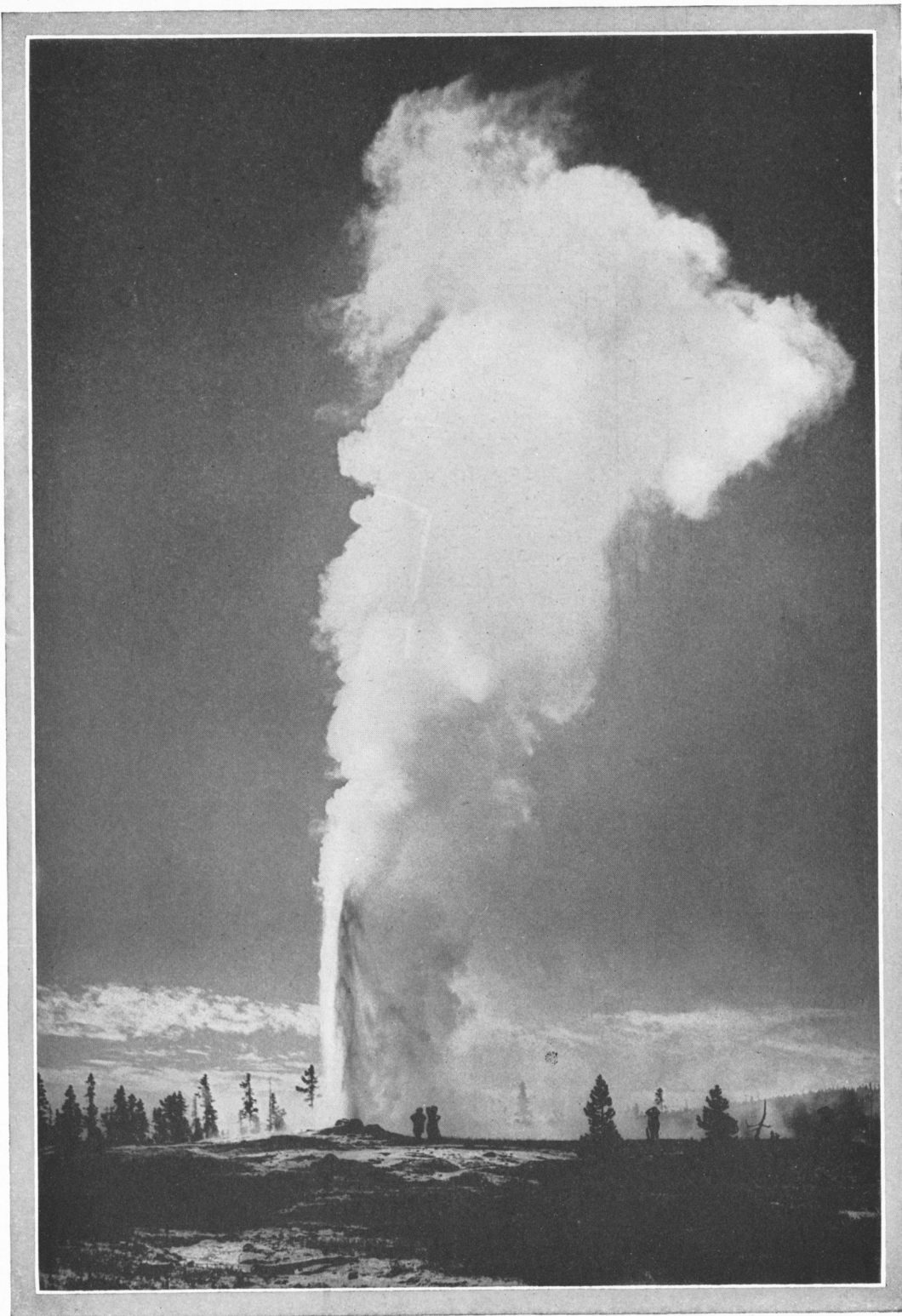


GEYSERLAND

YELLOWSTONE NATIONAL PARK



ISSUED BY THE
UNION PACIFIC SYSTEM



Old Faithful Geyser, Yellowstone National Park, reached via Union Pacific



Reached via Union Pacific System



FORMED by fire and finished by ice, wind, and water, is perhaps a summary of the geologic story of Yellowstone Park. Great volcanoes, forgotten by all except the scientists, fashioned the foundations of the landscape visible today; immense glaciers carved and polished canyon and mountain slope; wind and water perfected the infinitely varied sculpture of gorge, peak, and precipice.

Then the softer moods of Nature prevailed. She provided majestic rivers and far-reaching lakes, spread vast evergreen forests over her original handiwork, patterned the open spaces with lovely wild flower gardens. She gave this domain to bear, buffalo and beaver, elk and antelope, moose and deer; to eagle, waterfowl, lark, thrush, and warbler; and to the finny tribes of lake and stream.

What distinguishes Yellowstone is the existing evidence of those original mysterious and magnificent processes of the Park's creation. The visitor walks through the looking-glass into a wonderland where incredible things happen. Astonishment becomes a constant emotion.

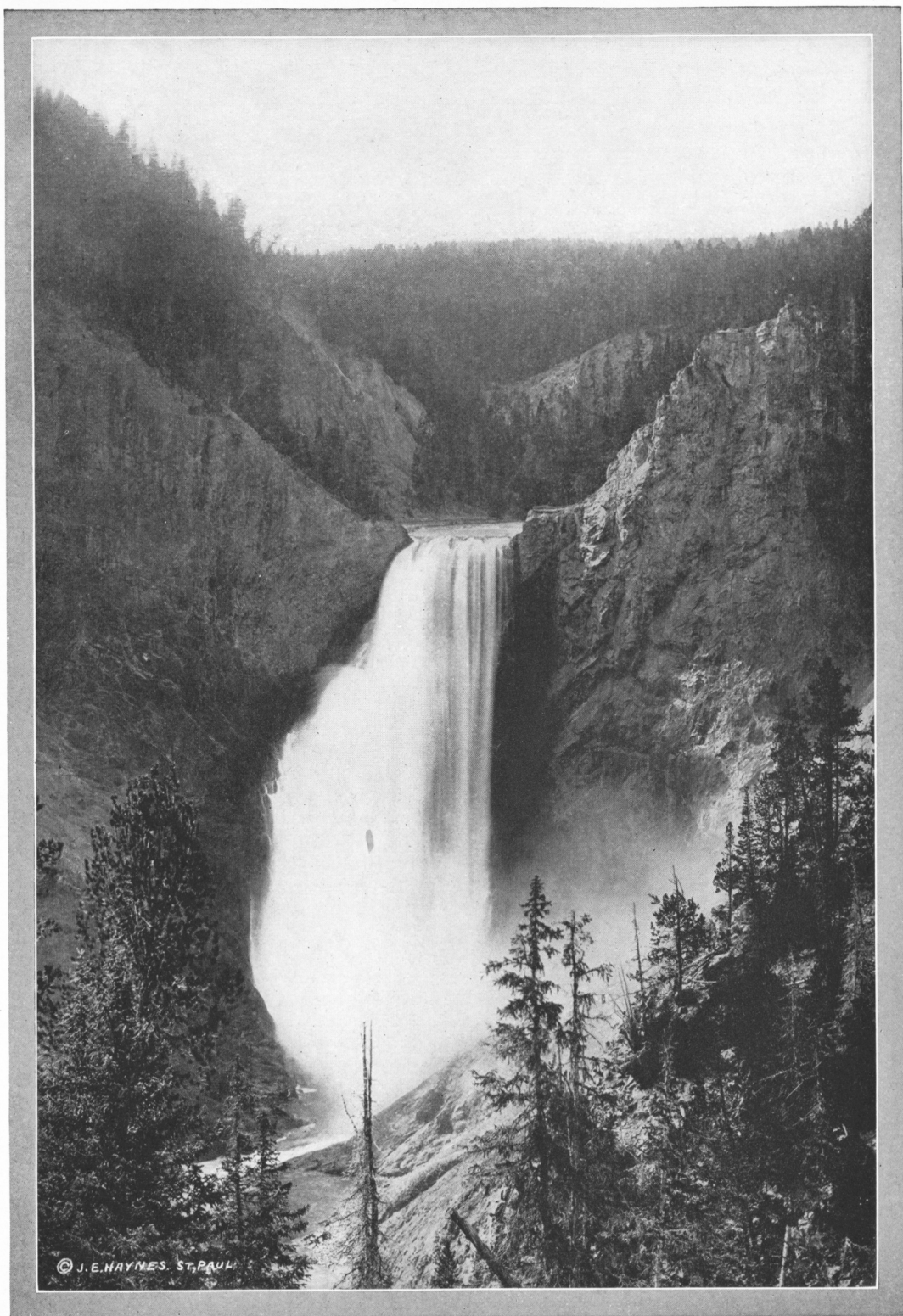
Although there is no sign of life about the ancient volcanoes, the earth hisses from a thousand vents, stretching, perhaps, from the subterranean fire. Great fountains of water and steam soar gracefully into the air, some regularly, others at unforeseen times. Numberless pools murmur and boil; the minute hot-water inhabitants of some have painted their bowls with the exquisite colors of sapphire, emerald and morning-glory; others have erected terraces and enameled basins of surpassing richness or have thrust their steaming cones through the icy waters of a lake. Here a mass of plastic clay, pink and cream, pouts and sputters; there stands a cliff of glass, a mountain of sulphur. On yonder mountain side are the petrified remains of a prehistoric forest

composed of semi-precious stone. A great river plunges with thunder and mist hundreds of feet into a stupendous canyon cut through twelve hundred feet of prismatic rock, glowing with colors no man has successfully described.

Yellowstone is vast, wild, unspoiled, a masterpiece of the primitive set aside in the fastness of the Rocky Mountains. It has lofty peaks, immense lakes, majestic rivers, wild flowers in profusion, forests living and fossil, glaciers at its borders—all, in fact, that other parks contain—and in addition, the matchless canyon and the amazing geysers.

You start from West Yellowstone, one cool bright morning along a smooth road through fragrant pine forests. Steam rises ahead and a turn discloses a small geyser spouting—the first you have ever seen. But at the same moment a mother bear, followed by her cubs, walks through a glade and when you have lost sight of them the geyser is quiet. Now the automobile has stopped beside a weird group of "paint pots" or has paused at a beautiful hot spring. Another geyser gushes unexpectedly from the riverside, a boiling spring emits a cavernous rumble, steam vents puff and hiss. The white crest of a distant peak appears, you glimpse a lacy waterfall, or the rippled ultramarine of a half hidden lake; a deer bounds across the highway. On another day you are motoring along one of the most gorgeous of all gorges, lost in delighted wonder. Then the automobile climbs through rich wild flower gardens to the crest of Mt. Washburn, whence noble panoramas of the Rockies stretch away in every direction.

These are random features of the wonders that a tour of Yellowstone Park, via Union Pacific to West Yellowstone, unfolds—scenes that intrepid explorers not so long ago faced hardship and danger to behold. You may see them in complete comfort, unspoiled, unchanged.



Great Fall from Red Rock, a plunge of 308 feet, and one of the grandest spectacles on earth

Yellowstone National Park via Union Pacific

General Description

YELLOWSTONE is the largest and probably the most famous of our national parks. There is no other region like it. In the variety and power of its geysers, in the diversity of its wonders, it has no rival. The Park, first in historical rank, was created by act of Congress, in 1872, for the perpetual enjoyment of the people. Uncle Sam and the *Union Pacific* have made it convenient and comfortable for all who wish to come.

Yellowstone National Park is in northwestern Wyoming and extends slightly into Idaho and Montana. It is about 62 miles long and 54 miles wide, and has an area of 3,348 square miles. Its general physical character is that of a broad, volcanic plateau with an average elevation of 8,000 feet, and surrounded by mountain ranges rising from 2,000 to 4,000 feet higher. (Map on pages 20-21.)

In Yellowstone Park there are approximately 100 geysers, more than in all the rest of the world. The very earth puffs, steams and hisses in the geyser basins as if a thousand underground factories were at work. There are some 4,000 hot and boiling springs, and many cold springs, some of them flowing Apollinaris and other mineral waters. There are prismatic pools with the exquisite beauty of flawless gems and flowers. Multi-colored "paint-pots" of plastic clay bubble and seethe. Gruesome mud volcanoes churn and roar harmlessly. There are tinted, fretted terraces resembling the fancied architecture of fairyland.

But Yellowstone must not be associated only with geysers and other hot water phenomena. Without the geysers, Yellowstone would remain a region of transcendent

beauty. The gorgeous canyon, painted more gloriously than any other gorge on earth, is a spectacle so sublime that it alone would draw thousands of visitors.

At its head a waterfall of great height and wonderful symmetry leaps from the evergreen hills and is lost in its own cloud of swirling spray. Castellated crags and lofty spires rise from slopes presenting all the tones of yellow, orange, red, and white. There are petrified forests, the trunks standing where they grew; there is a cliff of obsidian (volcanic glass) and a natural bridge.

The setting of these wonders is a land of vast evergreen forests, immense lakes, noble rivers, and majestic peaks. The rugged Absaroka Range stands upon the eastern boundary and the stately Gallatins guard the northwest. The drive over the summit of Mt. Washburn is one of the most inspiring mountain trips that can be made by automobile. The great tributaries of the Missouri River and the Snake have their sources within or near the Park. Yellowstone Lake, nearly 8,000 feet in elevation, and its largest body of water, has an area of 139 square miles.

This primeval wilderness is one of the largest and most successful wild animal refuges on earth. As an easily accessible field for varied nature study it has no equal. Bear, deer, elk, antelope, and many lesser animals may be seen with little effort, and those who travel the trails may see moose, bison, and mountain sheep. There are 200 species of birds in the Park; eagles nest upon the crags. Most of the streams and lakes abound in trout and the Madison River also contains grayling.



Giant Geyser throws an immense column of water 250 feet high



Grand Canyon of the Yellowstone from Artist Point

Through the forests, in the open meadows, and particularly upon the slopes of Mt. Washburn, are immense gardens of lovely wild flowers.

There are four great resort hotels in the Park, distinctive in architecture, and with the best metropolitan standards of luxurious service. There are five attractive lodges, composed of comfortable cabins, together with central dining rooms and social halls. Both hotels and lodges are situated adjacent to the principal places of interest and are regulated by the Federal Government.

Unquestionably the best way to see

Yellowstone National Park is by *Union Pacific System* trains to West Yellowstone, the only rail entrance directly on the Park boundary, thence by the automobiles of the Yellowstone Park Transportation Company, which operate over the 300 miles of excellent government highways which traverse the Park. These cars make a complete circuit of the chief attractions, which requires four and one-half days, and are driven by careful and experienced chauffeurs. Visitors driving their own cars through Yellowstone National Park have been known to miss some of its grandest spectacles.

What to Do In Yellowstone

ON A brief trip to Yellowstone, the visitor will probably be fully occupied with observing and admiring the scenic wonders and the wild animals. But the Park is a place to linger for a month or a summer. It is impossible to know it intimately on a brief visit and many return year after year to enjoy its variety. For those who linger, there are several hundred miles of trails leading to places of interest not reached by the automobiles; these may be traversed on foot, or on horses which may be hired at

reasonable rates. The trail traveler will have exceptional opportunities to see and photograph wild animals. Yellowstone is a happy hunting ground for the camera enthusiast; nowhere else can be obtained with equal ease so many unusual pictures. There are voyages to be taken on Yellowstone Lake, in rowboats or motor boats. There are rugged mountains to be climbed, some of them, as Grand Teton and Mt. Moran, to the south, requiring first rate mountaineering skill.

In the beautiful fairyland of Yellow-



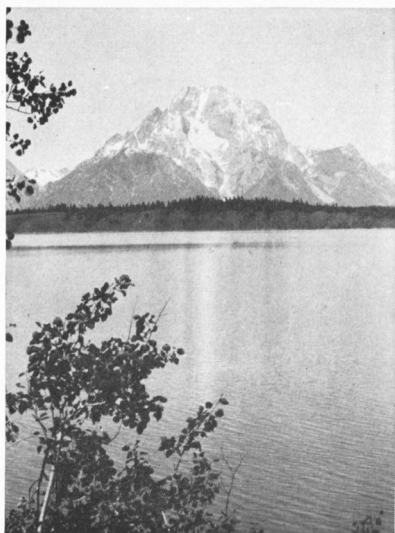
An unusual view of Old Faithful Geyser and Old Faithful Inn

stone you may live and travel in complete comfort. You may rest, accomplish your sightseeing from the cushions of an automobile, ride horseback, or follow the alluring trails on foot. You may procure a guide and camp equipment and explore the rarely visited regions where there is neither road nor trail. Government guides escort Park visitors to places of interest at Old Faithful, Lake, Canyon, and Mammoth Hot Springs and explain the strange phenomena; there is no charge for this service. Good fishing may be had in practically any part of the Park, near hotels or lodges, and even better results may be obtained in more distant lakes and streams. In the evening there are dances, impromptu entertainments, and other forms of amusement. Swimming pools are maintained at Old Faithful and Mammoth Hot Springs.

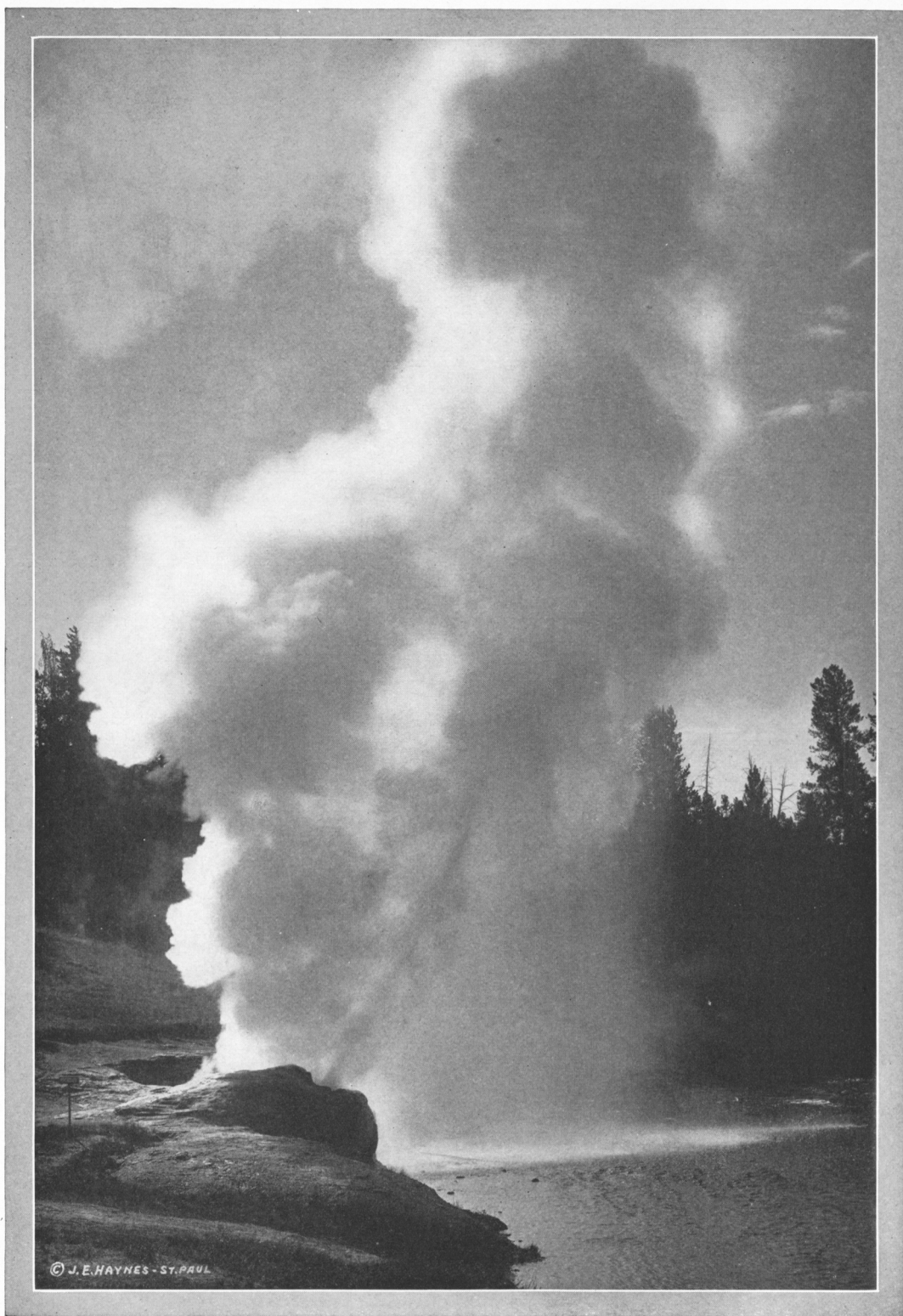
The Park, as a national institution, exists for your enjoyment.

History

John Colter, an intrepid frontiersman and a member of the Lewis and Clark expedition, was the first white man to behold any part of what is now Yellowstone Park. In 1807, after being wounded in a battle between Crow and Blackfeet Indians, he journeyed across the Park from Jackson Hole to Tower Fall, and carried the first accounts to civilization. Jim Bridger, famous guide, and J. L. Meek, a trapper and pioneer, were there about 1829. W. A. Ferris, of the American Fur Company, visited the geysers in 1834 and wrote the first published account of them. In 1863, Capt. DeLacy, searching for gold, explored part of the region. Yet,



Mt. Moran and Jackson Lake



Riverside Geyser throws a beautiful slanting column over Firehole River

because of the extraordinary nature of the phenomena, early accounts were discredited, and the Yellowstone remained practically unknown until the explorations of Folsom, Cook, and Peterson, in 1869, were disclosed. The Washburn-Doane expedition of 1870, which included Langford, Hedges, and Everts, and the scientific explorations of Dr.

Hayden, of the Geological Survey in 1871-2, increased its fame and led to its establishment as a national park in 1872.

At first Yellowstone National Park was under the jurisdiction of the United States Department of the Interior, as it is now, but there was a period of years when it was superintended by military authorities.

The Environs of Yellowstone

The Teton Mountains—Grasshopper Glacier

BYOND the boundaries of the Park, particularly to the south, east, and northeast, are rugged mountain areas, famous for scenic beauty.

The Teton Range begins a few miles outside the southern boundary and reaches its highest sublimity 30 miles southward in the spired group of granite peaks that culminates in the Grand Teton, 13,747 feet in altitude. The Grand Teton, chief landmark of the trapper early in the 19th century, is called by Gen. Chittenden "the most interesting historic summit of the Rocky Mountains." At its foot they gathered each spring with the furs collected during the winter. It was first scaled in 1898 and has been ascended several times in recent years; Mt. Moran's summit is next in lofty majesty. The extraordinary thrill that the traveler receives when he first sees these sharp, glacier-bearing crests perhaps exceeds that produced by any other mountains in the land. They seem to rise in a series of sheer precipices from the shores of Jackson Lake, without any gradual incline to lessen the contrast between their up-thrust, cathedral-like pinnacles and the horizontal plain. At their feet are a number of other small but beautiful lakes, Leigh and Jenny lakes among them.

The surrounding country, in Teton National Forest and known as Jackson Hole, shares the wild grandeur of the mighty peaks. There are many excellent fishing streams and lakes, wooded upland plains and vast forested areas. The region is the foremost big game haunt in the United States, noted especially for its abundance of elk. At Old Faithful Inn or Lodge, arrangements may be made for automobile trips to Moran, on the shore of Jackson Lake, where rustic lodges provide accommodations; or, the region may be conveniently reached via *Union Pacific* to Victor, Ida., thence by automobile to Jackson, Wyo. There are also a number of first-class dude-ranches in the vicinity; ask for a copy of *Union Pacific* booklet, "Dude Ranches Out West."

Another scenic region of high rank surrounds the quaint little mining town of Cooke City, Mont., just outside the northeast corner of the Park, and in the Beartooth National Forest. Probably the chief scenic spectacle in the vicinity is the Grasshopper Glacier, an immense mass of snow and ice far up on the shoulder of Iceberg Peak. Imbedded in the ice, which has cliffs 100 feet high, are millions of grasshoppers. The contiguous region is one of jagged peaks,



Deer may usually be seen along the less frequented trails



Yellowstone Lake, nearly a mile and one-half high

chaotic, imperfectly explored canyons, and mountain lakes leaping with trout. Most notable of these lakes is Abundance, so named from its apparently inexhaustible supply of game fish. Trails lead from Cooke City into the lofty peaks, conspicuous among them Pilot and Index, remarkable for their perpendicular, castellated crests. Cooke City, 38 miles from Roosevelt Lodge and reached by auto from that place or from Mammoth Hot Springs, has small hotels and a camp near by; special saddle trips, with guide, are provided.

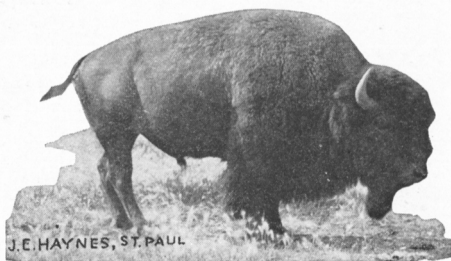
Wild Flowers and Forests

Yellowstone is a vast botanical garden. Wild flowers in great variety and profusion add the final exquisite touch to the

beauty of the wonderland. They grow not only on the lowlands, but far up the heights, often beside the melting snow-drifts. Among the characteristic and widely distributed flowers that bloom during the Park season are violets, phlox, mertensia, lupine, larkspur, monkshood, geraniums, harebells, spring lilies, mentzelia, primroses, asters, anemones, shooting stars, iris, orchids, marsh marigolds, buttercups and wild roses. The favorite habitat of the columbine is on Mt. Washburn, upon the slopes of which the wild flower gardens are particularly fine. Forget-me-nots are frequent; wild flax and the Indian paintbrush grow everywhere. Many esteem the exquisite fringed gentian foremost among the floral beauties.

Some of these bloom early, others in midsummer, while many linger late in the season; so that, no matter when the visitor comes, he will not miss this aspect of the Park's beauty.

Five-sixths of the area of the Park is forested, largely with coniferous trees, approximately three-fourths of which are lodge-pole pines. Other trees are limber pine, whitebark pine, Englemann spruce, blue spruce, Alpine and Douglas firs, cedar, juniper, and cottonwood; the quaking aspen grows in all parts, furnishing food for deer and beaver.



A Yellowstone Park buffalo



Fountain Paint Pot in Lower Geyser Basin bubbles and seethes continually

Season and Climate

Union Pacific Service

The Park season is from June 20th to September 15th, inclusive. The first Union Pacific *Yellowstone Special* Train departs from Salt Lake City on June 19th, and the first *Yellowstone Express* departs from Pocatello on June 20th; and the first automobile stages leave West Yellowstone station, the Union Pacific entrance to the Park, on June 20th. The last date on which the automobile stages will return to West Yellowstone station after a complete tour of the Park, will be September 19th.

The season at which the Park is open to visitors is at a time when life in the mountains is most healthful and delightful. The elevation—7,000 feet—insures cool nights, ideal for refreshing sleep. The days are clear and sunny, but never hot or oppressive. The pure, bracing air, free from fog, carries the wholesome tang of the pine forests. Mean average summer temperatures range from 54 degrees to 64 degrees, with a maximum of 88 degrees. While Yellowstone National Park has never been exploited for its health-restoring features, its pure waters and equable, bracing climate are

undoubtedly of great benefit. Those who remain long enough to enjoy its many open air diversions, among which both the mild and the strenuous are to be found, cannot fail to perceive the invigorating results of the summer outing.

"Taken in all its phases, the climate of the Park is as delightful and healthgiving as it is possible to find," wrote General Chittenden, the foremost authority on Yellowstone. The summer air of the high plateau is cool, fragrant, and invigorating. While there is some climatic variation, each month during the official season has its particular attraction.



Yellowstone's Powerful New Geyser which began to Play in 1928



The cozy Bungalow Cottages at Canyon Lodge are typical of the Park's lodge accommodations

Yellowstone Park in Detail

The Geysers

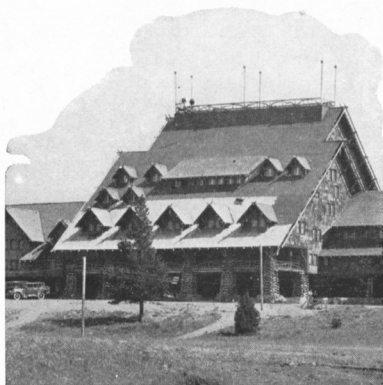
AMONG all the wonders that Yellowstone contains, none is so startling, weird, and impressive as the geysers. Drawing their energy from invisible underground sources, some spouting with clock-like regularity, others, apparently, when they feel like it, these mysterious hot-water fountains fascinate the beholder and leave an indelible record on the memory. In number, in power, variety, and splendor of action, the Yellowstone geysers are unrivaled elsewhere on earth.

The principal geysers are found in three basins in the west-central part of the Park (most quickly reached via West Yellowstone, the Union Pacific entrance), while smaller groups exist to the south. Other hot water phenomena, exquisitely tinted springs and terraces, mud volcanoes, and innumer-

able steam vents, are distributed throughout the Park. Upper, Lower, and Norris Basins, the chief geyser areas, are included in the automobile tour from West Yellowstone as are two smaller intermediate basins, Midway and Biscuit.

First among the geysers is Old Faithful, the most celebrated in the world. Combining power, volume, beauty, and regularity, it approaches the geyser ideal and never fails to delight the beholder by

sending its graceful, spray-draped column skyward at intervals of from 60 to 80 minutes. The Daisy, a smaller, but highly interesting geyser, also plays with pleasing regularity. Other geysers noted for the splendor of their performances are the Giant, Grand, Giantess, Great Fountain, and Beehive. Some gush irregularly, days intervening;



Rustic Old Faithful Inn

some play every few minutes; some spout and roar with the intensity of volcanoes, while others play less violently, displaying a variety of individual peculiarities. The Riverside, situated as its name implies, sends a diagonal jet above the stream; the Castle, the Grotto, and the Beehive are noted for their picturesque cones, as also is the Lone Star, in the forest about 3½ miles southeast of Old Faithful. The Excelsior Geyser, once the greatest on earth, has ceased its activity, although its immense crater filled with boiling water remains a thrilling sight. A spectacular new geyser with

a crater resembling that of Excelsior appeared in the Lower Basin in 1928 and continues to play with power and regularity.

The enchanting delicacy of form and color of many of the hot springs has its highest manifestation in Morning Glory and Turquoise Pools, Grand Prismatic Spring and Emerald Pool. Handkerchief Pool sucks your handkerchief down its throat and returns it laundered by boiling water. Many of the geyser pools are highly beautiful in repose.

The more important geysers, springs, and pools, are listed below:

UPPER BASIN (OLD FAITHFUL)

NAME	Height of Eruption in Feet	Length of Eruption	Intervals Between Eruptions
Artemisia Geyser.....	50	10 to 15 min.	Irregular
Beehive Geyser.....	200	6 to 8 min.	Irregular
Black Sand Pool.....	Deep blue pool		
Castle Geyser.....	50-75	30 min.	Irregular
Cub Geyser.....	60	8 min.	Irregular
Daisy Geyser.....	70	3 min.	80 to 90 min.
Emerald Pool.....	Beautiful green pool		
Giant Geyser.....	200-250	1 hour	Irregular
Giantess Geyser.....	150-200	12 to 36 hrs.	Irregular
Grand Geyser.....	200	15 to 30 min.	16 to 20 hrs.
Grotto Geyser.....	20-30	Varies	2 to 5 hrs.

UPPER BASIN (OLD FAITHFUL)

NAME	Height of Eruption in Feet	Length of Eruption	Intervals Between Eruptions
Jewel Geyser.....	5-20	1 min.	5 min.
Lion Geyser.....	50-60	2 to 4 min.	Irregular
Lioness Geyser.....	80-100	10 min.	Irregular
Morning Glory Pool.....	Exquisite beauty of form and color		
Oblong Geyser.....	20-40	7 min.	8 to 15 hrs.
Old Faithful Geyser.....	120-170	4 min.	60 to 80 min.
Riverside Geyser.....	80-100	15 min.	7 to 8 hrs.
Sawmill Geyser.....	20-35	1 to 3 hrs.	Irregular
Sponge Geyser.....	Small but perfect geyser		
Sunset Lake.....	Beautiful hot spring		
Turban Geyser.....	20-40	10 min. to 3 hours	Irregular

LOWER BASIN

NAME	Height of Eruption in Feet	Length of Eruption	Intervals Between Eruptions
Steady Geyser.....	20-40	Continuous	None
White Dome Geyser.....	40	1 min.	40 to 60 min.
New Geyser (1928).....	100-125	4 to 5 hrs.	12 to 15 hrs.
Clepsydra Geyser.....	10-40	Short	3 min.
Firehole Lake.....	Illusion of flames under water		
Fountain Geyser.....	75	10 min.	Irregular
Great Fountain Geyser.....	75-150	45 to 60 min.	8 to 12 hrs.
Fountain Paint Pot.....	Basin of boiling tinted clay		
Grand Prismatic Spring.....	Remarkable coloring		
Turquoise Pool.....	Large, beautiful hot spring		

NORRIS BASIN

NAME	Height of Eruption in Feet	Length of Eruption	Intervals Between Eruptions
Constant Geyser.....	15-35	5 to 15 sec.	20 to 55 sec.
Congress Pool.....	Large boiling spring		
Echinus Geyser.....	30	3 min.	45 to 50 min.
Emerald Spring.....	Beautiful hot spring		
Hurricane Vent.....	Whirling Steam Vent		
Minute Man Geyser.....	8-15	15 to 30 sec.	Irregular
Monarch Geyser Crater.....	Extinct		
New Crater Geyser.....	6-25	1 to 4 min.	2 to 5 min.
Valentine Geyser.....	60	15 to 60 min.	Irregular
Whirligig Geyser.....	10-15	Irregular	Irregular



Horseback trails lead to the inner recesses of the Park—A party fording Yellowstone River



Beautiful Kepler Cascades in Firehole River descend nearly 150 feet



Morning Glory Pool has the beautiful form and tints of the flower that gave its name

Grand Canyon and Great Falls of the Yellowstone

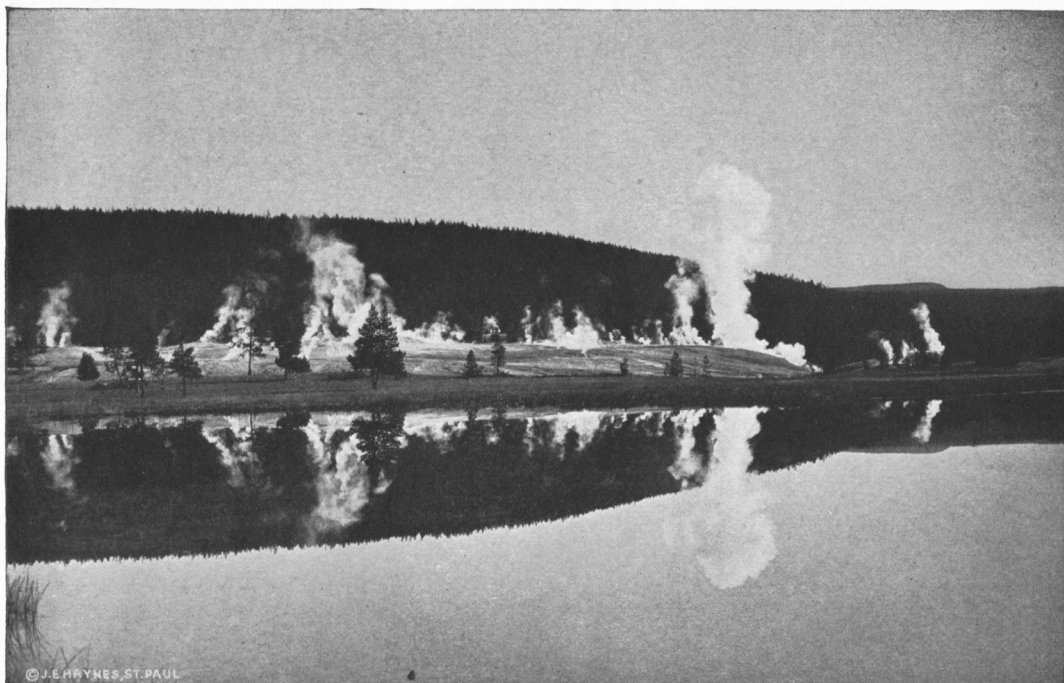
IN SHEER, compelling beauty, no single spectacle in the Park approaches the Grand Canyon of the Yellowstone with the Great Falls at its head. It is, in fact, as declared by Gen. Chittenden, "acknowledged by all beholders to stand without parallel among the natural wonders of the globe." Color, glowing color spread over its castellated walls with measureless prodigality and infinite variety is its most striking feature.

The great prismatic gorge is 1,200 feet deep, 2,000 feet wide at the top, and 200 feet wide at the bottom. Its walls are fissured, slashed, etched, and carved into thousands of architectural forms which rise here and there in dizzy groups of gothic spires where ospreys make their nests. Over these slopes are gorgeous patterns of color—all the tones of orange and yellow, vivid and pale; rich crimson down the scale to most delicate pink; blacks, grays, buffs, pearly tints, and pure white. Far below, a slender, winding ribbon of green, bordered with white lace, the river flows. Upon the plateau dense forests furnish long borders of dark green and the vault of the sky contributes its varying blue.

The finest aspects of the scene cannot omit the Great Fall of the Yellowstone. There the river becomes perpendicular and leaps with the roar of a thousand dynamos 308 feet to the floor of the kaleidoscopic canyon, losing itself in a whirling nebula of spray which sends graceful streamers of mist incessantly upward. A stairway leads to the crest of the Great Fall, and a trail descends to its foot. Less than half a mile up stream is the Upper Fall, 109 feet high, itself impressively wonderful. The symmetrical beauty of both these falls is heightened by their matchless surroundings. Seen by moonlight, they acquire a softened and mysterious charm that is not to be described.

Talented men have left descriptions of the scene, graphic but inadequate word pictures; usually, these end as did that of Folsom, who beheld the canyon in 1869; "Language is entirely inadequate to convey a just conception of the awful grandeur and sublimity of this most beautiful of nature's handiwork."

Rudyard Kipling wrote: "Without warning or preparation, I looked into a gulf 1,700 feet deep, with eagles and fish-hawks circling far below. And the sides



Upper Geyser Basin, the largest in the Park and the home of Old Faithful

of that gulf were one wild welter of color—crimson, emerald, cobalt, ochre, amber, honey splashed with port wine, snow-white, vermilion, lemon, and silver gray in wide washes. So far below that no sound of strife could reach us, the Yellowstone River ran, a finger-wide strip of jade green. The sunlight took those wondrous walls and gave fresh hues to those that nature had already laid there."

Of the many view points along the Canyon rim, perhaps the most celebrated are Artist and Inspiration Points. The view from the latter should not be missed by any visitor. Other view points, each disclosing special features and enchanting vistas are Point Lookout, Red Rock, Grand View, and the Castle Ruins, all of them along the road leading to Inspiration Point.

Mt. Washburn and the Tower Fall Region

NORTHWARD from the Grand Canyon, the automobile road leads, by



Handkerchief Pool, a natural laundry

way of Dunraven Pass over the shoulder of Mt. Washburn, an extinct volcano, 10,346 feet high. By special arrangement and payment of \$2.00 passengers holding Park Tour tickets will be carried to the very summit of the mountain. Upon the slopes of this great peak are lovely gardens of wild flowers, mile upon mile in extent, and of richest variety. From Mt. Washburn's crest the traveler is impressively reminded that he is in the heart of the Rocky Mountains, for noble panoramas of lofty mountains lie south, east, and north, including the matchless Teton, the wild and rugged Absarokas, the wintry Snowy Range, and the stately Gallatins, with vast intermediate areas of forest rolling away in every direction.



The Lounge of Luxurious Grand Canyon Hotel

Tower Fall, a beautiful column of water, 132 feet high and surrounded by bizarre pinnacles of volcanic rock, is near the lower, or northern, end of the Grand Canyon of the Yellowstone; remarkable palisades of columnar basalt overlook the river and in one spot actually project

across the road, while slender spires rise from the depths of the gorge. Roosevelt Lodge, in the vicinity, is the starting point for trips to the Fossil Forests, the Grasshopper and other glaciers and the fishing lakes in Beartooth National Forest, near Cooke City, Montana.

The Fossil Forests of Yellowstone

THE great fossil forests of Yellowstone truly deserve their name because instead of scattered groups of fallen logs far removed from their place of growth, the petrified trunks remain standing where they first took root. The forests occupy extensive areas in the northeastern part of the Park, on the ridges south and west of Lamar River. The erosion of the valley of this river has caused a deep exposure of the rocks, which were built up during the volcanic period of the Park, disclosing the forest areas which were imbedded during that remote period. The most accessible stands on Specimen Ridge at elevations between 7,000 and 7,500 feet, about six miles southeast of Roosevelt Lodge, and may be reached on horseback. There are a few petrified trees about $1\frac{3}{4}$ miles west of the Lodge. On the northeastern slope of Amethyst

Mountain, about ten miles due southeast of Roosevelt Lodge, the forests stand superimposed through 2,000 feet of strata, where they grew and were successively



Rocky Mountain sheep in Yellowstone ©NPS



The Sponge Geyser

imprisoned by volcanic material, and the lower slopes are covered with fragments displaying beautiful crystals of agate, carnelian, jasper, chrysoprase, and amethyst.

Among the petrified trees of the Yellowstone are more varieties than are found in any other region; they include redwoods (sequoia), pines, laurels, bays,

buckthorns, sycamores and oaks. In them are found one of the most perfect natural records which the researches of geologists have ever brought to light. Some of the trunks rise 40 feet above ground, and one redwood measures $26\frac{1}{2}$ feet in circumference. The wood structure is perfectly duplicated in stone, although its age is estimated to be a million years.

Mammoth Hot Springs

AT Mammoth Hot Springs, hot waters heavily laden with carbonate of lime from subterranean sources have built up a number of terraced eminences exquisitely carved and embossed. Algae living in the cascades that pour down their slopes have painted the fretted basins and sculptured cornices with delicate tones of scarlet orange, pink, yellow, and blue, while, where the waters have temporarily ceased flowing, the fluted columns and beaded traceries are snow-white. With the water pouring over their elaborate incrustations, the terraces glow with a matchless harmony of color and seem like living organisms. The history of the hot springs is that of constant change, making the permanency of their deposits much less than that of other spring formations in the

Park. In fact, the terraces grow and change so rapidly that in building up their dainty architecture full grown trees have been engulfed by the deposit.

The beauty of the individual terraces often varies from year to year with the flow of hot water, and this adds changing variety to the charm of the entire group. Pulpit, Minerva, Mound, Jupiter, Cleopatra, Angel, and Hymen terraces, Orange Spring, the White Elephant, and the Devil's Kitchen are perhaps the most striking features. The Devil's Kitchen is a steam-heated cavern that may be descended to the bottom by means of a stairway. Liberty Cap, the hardened cone of an extinct hot spring, now stands like a monument, forty feet above the formation.



Grasshopper Glacier, near Cooke City, a side trip from Yellowstone Park

The steaming, tinted terraces, with the administration buildings near by, are surrounded by mountains—the long, palisaded battlements of Mt. Everts, to the east; the rounded dome of Bunsen Peak, to the south; the peaks of the Gallatin Range in the west; and the rugged masses

of the Snowy Range in the north. Side trips by automobile and horseback may be made to Bunsen Peak, Electric Peak, Mt. Everts, Osprey Falls, Sepulchre Mountain, Boiling River, to the herd of buffalo in a corral on the road to Bunsen Peak, and other places of interest.

Yellowstone A Sanctuary for Wild Life

THE success of this largest of natural zoological Gardens is established by the mute testimony of the wild animals themselves. Because of the protection given them, they have increased and multiplied, and they have lost much of their fear of man. All of them are harmless unless interfered with or annoyed. Hunting them with the camera is encouraged, but no other kind is permitted. Automobile travelers

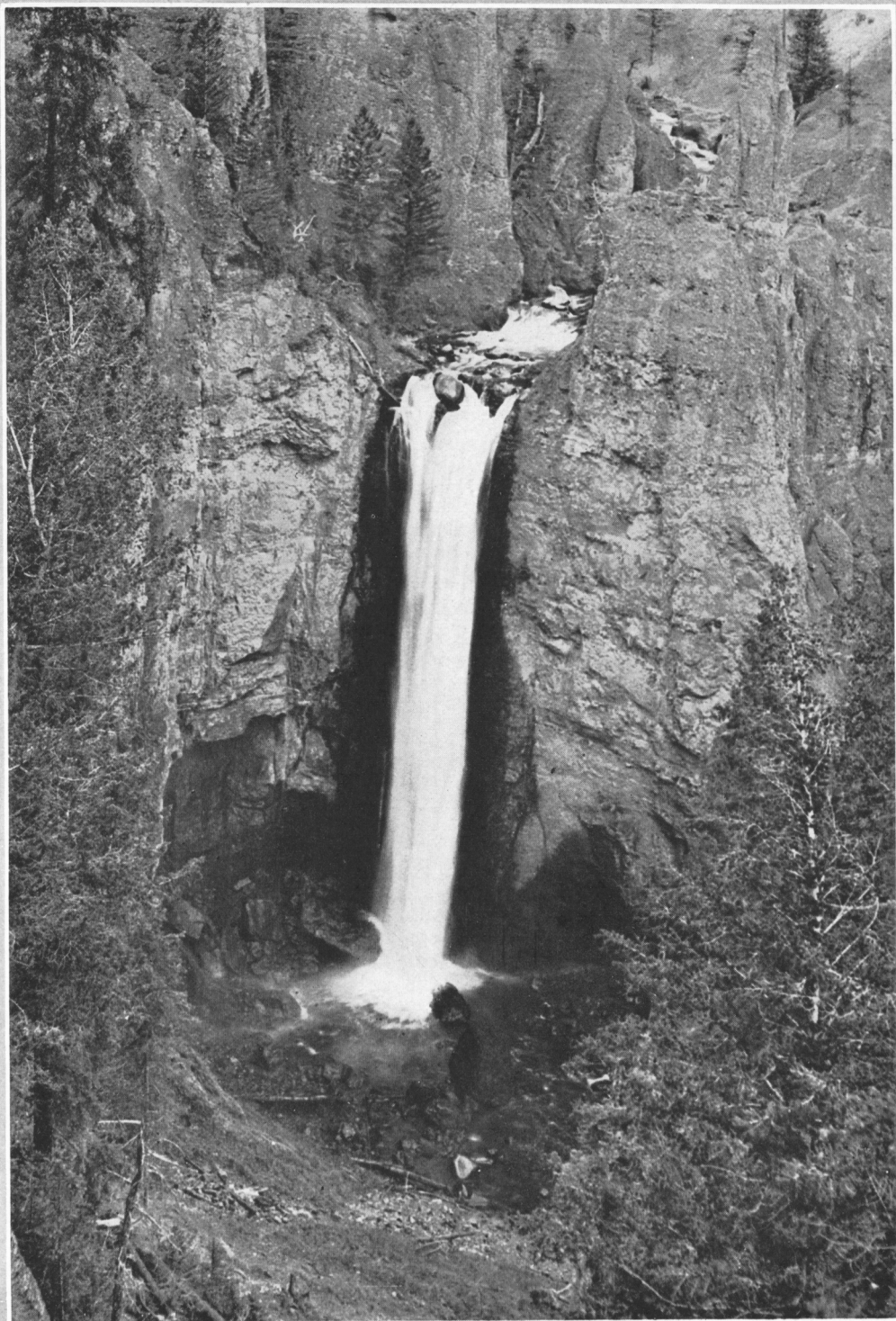
along the main highway during the season may not always see even the most common species; the patient traveler on the secluded trails, however, may often

see bears, elk, deer, and antelope; and by walking or riding horseback to their known retreats, he may see moose, mountain sheep, and buffalo.

Bears are perhaps first in interest. Black and brown bears are numerous and may usually be seen during the



One of the Park's permanent residents



Tower Falls drops 132 feet—Yellowstone National Park

early morning or evening feeding upon the kitchen scraps given them by the hotels and lodges. Your vacation time is theirs also, for then they do not have to search for food. They are playful, sometimes friendly, and will boldly steal anything edible. Occasionally, a grizzly joins the feast and is treated with marked respect. A mother bear with young cubs is always a charming sight. It is inadvisable to approach the bears too closely, no matter how good humored they seem.

There are three herds of buffalo (American bison) in the Park. One, numbering some 1,000, ranges up the Lamar River and in the valley of Cache Creek. This herd roams far from highways and its location should be ascertained from the Rangers. During the summer, a "show herd" is kept in a corral near Mammoth Hot Springs for the observance of tourists. The other unrestrained herd, numbering from 85 to 125, roams between Yellowstone Lake and the Lamar River.

The number of elk in the Park is estimated to be 20,000; they spend the spring and summer above timber-line in the

mountains and frequently roam outside the Park boundaries. Special trips to the north end of Yellowstone Lake and to Specimen Ridge often result in seeing a number of them. There are more than 575 moose, principally in the southern parts. Antelope are common in the open valleys of the Yellowstone, Gardiner, and Lamar Rivers. Mountain sheep live in the northern ranges of the Park, and mule deer may be seen in all its parts. Beavers are fairly abundant along some of the streams and their dams and houses are always sources of interest. Among other smaller animals are foxes, otters, badgers, minks, martens, woodchucks, porcupines, and several varieties of chipmunk, squirrel, and rabbit.

More than two hundred species of birds are found in the Park. Among them are eagles, hawks, falcons, owls, kingfishers, gulls, pelicans, ducks, geese, swans, herons, cranes, snipes, plovers, grouse, woodpeckers, blackbirds, larks, jays, magpies, tanagers, finches, swallows, waxwings, warblers, wrens, robins, thrushes, and bluebirds.

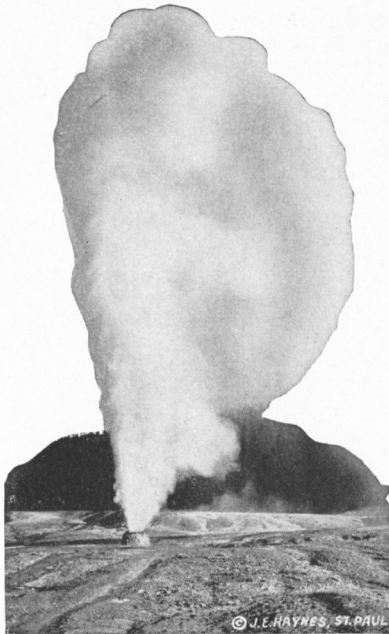
Yellowstone's Lively Fishing Waters

THE native game fishes of Yellowstone, which is indeed a fisherman's paradise, are grayling and cutthroat trout, while the whitefish, which also is a native, may be so classed. The game fishes introduced by the Government are rainbow, Loch Leven, European brown or Von Behr, Eastern brook, and lake trout. These species are replenished through annual plantings by the Bureau of Fisheries.

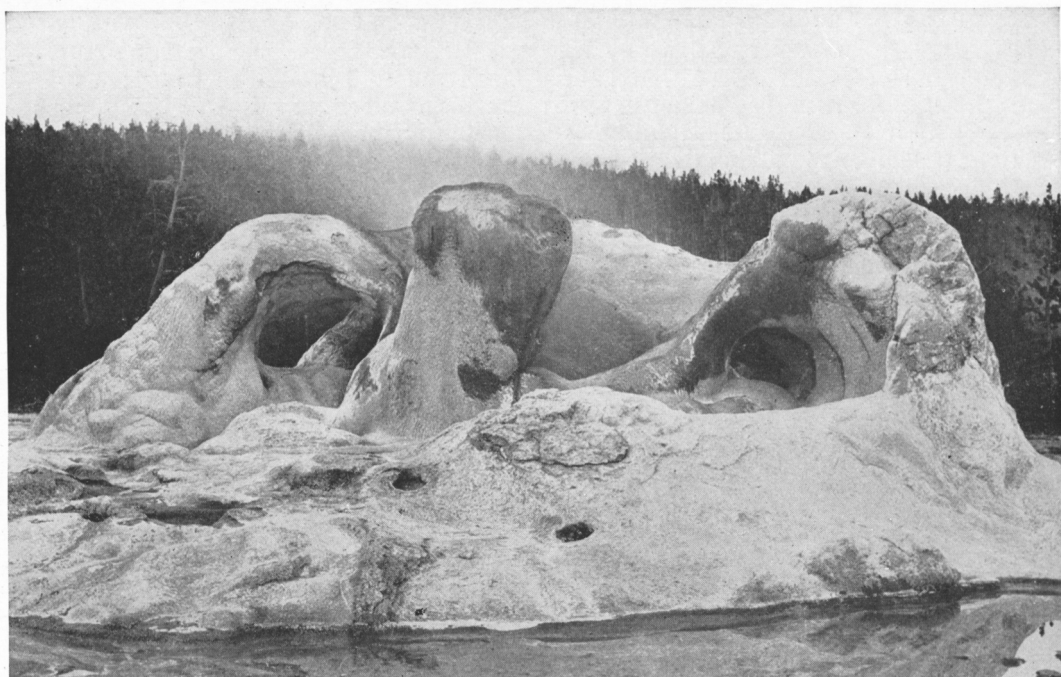
Nearly all of the lakes and streams of the Park, from those within easy distance of hotels and lodges to the most remote, contain one or more species of trout and a few contain whitefish and grayling. Naturally the more distant waters offer the

readiest sport. Good fishing may be had in Yellowstone Lake and River, and the Madison, Gibbon, and Firehole Rivers, which are reached by the main highways. But in the less visited lakes and streams, the sport attains a pinnacle of excellence that delights the angler. A Government booklet, "Fishes of the Yellowstone National Park," gives detailed accounts of the fishing in the principal lakes and streams; it is procurable from the Supt. of Documents, Washington, D. C.

Those who come to Yellowstone unprepared may rent fishing equipment of all kinds at any of the hotels or lodges, or may purchase it at the general stores. No fishing license is required.



Beehive Geyser spouts 200 feet at irregular intervals



Grotto Geyser has the most curiously formed cone of all Yellowstone's geysers

Excursions on Yellowstone Lake

FEW lakes on earth surpass Yellowstone Lake, both in area and elevation. Its surface covers approximately 139 square miles and it is nearly a mile and one-half above the level of the sea. The jagged, snowy Absarokas stand in the east; to the south, Mt. Sheridan, part of the rim of a huge, extinct volcano. There are brilliant "paint pots," hot springs, and one active geyser, the Lake

Shore, on the West Thumb shore; the famous Fishing Cone also stands there, a boiling spring rising from the lake bottom. Motor and row boats may be engaged from the boat company near Lake Hotel and Lodge at reasonable rates authorized by the Government, and many interesting trips to the distant shores, such as those to The Thumb and to the Southeast Arm, may be made.

Yellowstone's Hotels and Lodges

VISITORS may stop at the hotels or the lodges, whose standards are established and supervised by the Federal Government. Both hotels and lodges are situated in the vicinity of the chief attractions. Each of the four hotels is individual in architecture, spacious, completely equipped with modern conveniences. The lodges are well arranged little villages of comfortably furnished cabins and bungalow-tents, with central dining and social halls.

Old Faithful Inn, in Upper Geyser Basin, is a great hotel of native logs and stone, noted for its original architectural beauty and its pleasing harmony with its

surroundings. Pilasters, braces, and balustrades of natural branches from the neighboring forests produce a delightful blend of art and rusticity. In the wide and lofty lobby, with its sepia tones of bark, the guest may easily fancy himself in the depths of the forest. In the massive fireplace an ox might be roasted whole. At night a searchlight plays from the roof of the Inn on the ghostly column of Old Faithful Geyser and on the bears feeding in the woods.

Old Faithful Lodge, typical of the permanent lodges in Yellowstone, is a village of cozy cabins roofed with asbestos. The lodges, which are elec-



Gibbon Falls. On one side a glittering torrent, on the other thin ribbons of silvery spray

tric-lighted and heated by wood-burning stoves, are of one, two, and four-room capacity. There are large social assembly halls, and dining halls where excellent meals are served in family style.

Both hotel and lodge in Upper Geyser Basin are in the immediate vicinity of Old Faithful, with other great geysers but short distances away.

Upon an attractive site at the northern end of Yellowstone Lake are Lake Hotel and Lake Lodge.

Grand Canyon Hotel, near the Grand Canyon and Great Fall, is one of the finest of resort hotels. Handsome in design, impressive in size, its appointments and service are of exceptionally high standard. A feature of the hospitality is the Lounge, a beautiful social chamber 200 feet long, 100 feet wide, and enclosed by an unbroken series of windows. Canyon Lodge, recently enlarged, is on the south

rim of the Grand Canyon, immediately east of the Great Fall.

Roosevelt Lodge, near Tower Fall, is in a region where exceptional opportunities for fishing and observing wild life may be had. It is the starting point for trips to the fossil forests, the buffalo ranch, and the strange Grasshopper Glacier, near Cooke City, Montana.

At Mammoth Hot Springs both hotel and lodge are adjacent to the Terraces and other scenic features of the locality.

The handsome Union Pacific Dining Lodge and the attractive Union Pacific Station at West Yellowstone provide the finest service to entering and departing travelers.

The National Park Service furnishes free nature guide service to the chief phenomena in the immediate vicinity; frequent trips afield, so arranged as to be convenient to everybody, are made from Mammoth Hot



Yellowstone is a fisherman's paradise



Pulpit Terrace, Mammoth Hot Springs

Springs, Old Faithful, Lake, Canyon, and from Roosevelt Lodge; free lectures are given to visitors. Dances and other amusements are frequently provided in the evening. Outdoor diversions are featured at the lodges, where impromptu entertainments are given around the campfires. Books, pictures, candy, postage stamps, films, souvenirs, equipment for fishing, riding and touring, etc., may

be purchased at the hotels and lodges. Swimming pools are maintained at Mammoth Hot Springs and Upper Geyser Basin. Long distance telephone service is available from all hotels and lodges; horses and guides may be hired at any hotel or lodge. Trained nurses are stationed at each hotel and lodge, and there are adequately equipped dispensaries; at Mammoth Hot Springs is a fully equipped hospital.

Automobile Transportation

THE Yellowstone Park Transportation Company, supervised by the Government, operates automobiles on regular schedules from West Yellowstone, Montana (the only rail entrance directly on the park boundary), connecting with the Union Pacific System's "*Yellowstone Special*" every morning and with the "*Yellowstone Express*" every afternoon, and from other entrances, to all hotels and lodges and to the principal scenic points.

The transportation equipment consists of powerful eleven-passenger automobiles with removable tops and designed especially for Yellowstone Park service. Driven by experienced chauffeurs, they run along the 302 miles of smooth roads on convenient schedules. Stop-overs may

be had at any hotel or lodge en route. The complete loop trip from West Yellowstone to West Yellowstone includes 168 miles of motoring.

The milepost system in Yellowstone Park is made up of diamond-shaped steel signs with raised letters, which are in every case initials of a junction point on the loop road system or of a Park gateway.

Travelers holding regular Park Tour coupons may charter special touring car for complete tour upon payment of \$25.00 per day additional, minimum party of five adult fares required.

Six-passenger touring cars, when available, may be engaged for special trips by arrangement with the transportation company at \$6.00 an hour. Transportation charges are fixed by the Government.



West Yellowstone Station (Union Pacific System) at the western entrance to Yellowstone Park

Trails and Side Trips

DELIGHTFUL and comprehensive as is the regular automobile trip through the Yellowstone, the visitor who has enjoyed it need not suppose he has seen all that the 3,348 square miles of the Park have to offer. Other motor trips of absorbing interest may be made, and there are several hundred miles of trails leading to lakes and streams populous with hungry fish; to the secluded haunt of buffalo, moose, and elk; to picturesque geological formations, strange old mining villages, and little known peaks and glaciers. For extended trail trips, guides are desirable, but those who wish to go alone should first consult the Superintendent's office or the nearest Park Ranger, and equip themselves with accurate map.

Several villages near the Park are headquarters for guides and outfitters with whom arrangements may be made for saddle-horse trips through Yellowstone; their names and addresses may be obtained from the Park Superintendent.

Saddle and pack horses may be hired at West Yellowstone and at hotels and

lodges at Upper Geyser Basin, Grand Canyon, Mammoth Hot Springs, and at Roosevelt Lodge. The rate (without guide) is 75 cents per hour; \$2.50 per half day; \$3.50 a full day. Mounted guides may be engaged for \$5.00 a day.

Among the many interesting horse-back trips available, are those to Lewis, Shoshone, and Heart Lakes, Bechler River Canyon, Big Game Ridge and Specimen Ridge.



A friendly woodchuck



The handsome Union Pacific Dining Lodge at West Yellowstone

Reasons Why You Should Travel via Union Pacific

YELLOWSTONE National Park is unique among the wonders of the world. To go there via the Union Pacific adds much to the enjoyment because, in addition to the finest of train service, one may also visit Denver, Colorado, and Ogden and Salt Lake City, Utah, without additional rail cost.

The route of the Union Pacific System is full of intense historical interest, and much of it is famous for picturesque beauty. The Union Pacific is the first transcontinental railroad, a route followed in succession by the fur traders, the Mormon pioneers, the gold hunters of '49, the Overland stage coach and the Pony Express. The perils faced by the builders of the Overland Route read like a thrilling novel of adventure. Westward from Nebraska and Kansas, practically every mile of construction was viciously opposed by Indian warriors and many names famous in history are associated with these battles on the plains.

The train accommodations offer the highest standard of personal comfort, the roadway is a masterpiece of engineering, and powerful locomotives maintain on-time schedules. The train personnels are chosen for ability and courtesy. The road from Chicago and Omaha to Ogden

and Salt Lake City is double track; all of it is ballasted to extraordinary smoothness with resilient Sherman gravel and protected by automatic safety signals. Handsome new dining cars provide excellent meals.

The Union Pacific operates fast through trains from Chicago, via Omaha, to Ogden and Salt Lake City, and from St. Louis, via Kansas City and Denver, with through sleeping cars for West Yellowstone. Connections (no change of cars when through Pullmans are used) are made at Ogden or Salt Lake City with the noted *Yellowstone Special* and at Pocatello, Idaho, with the *Yellowstone Express*. These two daily trains are operated during the season specifically for travelers to Yellowstone Park. The *Yellowstone Special*, with observation and standard sleeping cars, leaves Salt Lake City and Ogden every evening and reaches West Yellowstone, Mont., in time for breakfast next morning. The *Yellowstone Express*, with observation and dining car, leaves Pocatello every morning (through sleeping cars from Salt Lake City every night) and arrives at West Yellowstone in mid-afternoon.

Through sleepers are operated during the season from the Pacific Northwest to

West Yellowstone; and from Los Angeles and San Francisco trains connect with the *Yellowstone Special* at Salt Lake City and Ogden. Automobiles meet each train for the tour of Yellowstone Park.

West Yellowstone, Mont., the Union Pacific station, is the only railroad entrance directly on the boundary of Yellowstone National Park. Sight-seeing in the park commences immediately upon departure from the station, and the automobiles proceed directly to the great geysers surrounding Old Faithful without any loss of time. A handsome new Union Pacific dining lodge at West Yellowstone, one of the finest in the West, provides unsurpassed meals, and the luxurious station affords many conveniences for travelers.

Denver may be visited without additional rail transportation cost on through tickets. Denver is the gateway to many famous resort regions in the Rockies, including the Alpine grandeur of Rocky Mountain National (Estes) Park and the Colorado National Forests, all of which may easily be combined with the Yellowstone National Park tour.

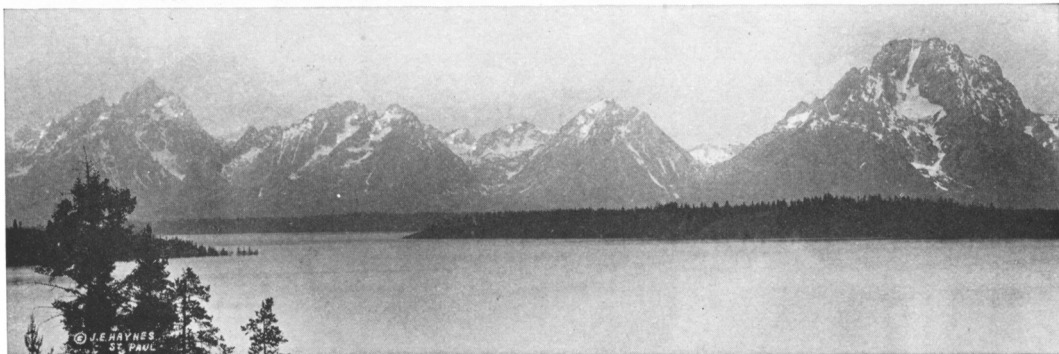
Through Wyoming and over the Continental Divide there is a continuous succession of impressive panoramas. In Echo and Weber Canyons, where the Union Pacific penetrates the Wasatch Mountains, the deep winding gorges lie 4,000 feet below the enclosing peaks, and a mountain stream dashes beside the tracks, on its way to Great Salt Lake.

A side trip from Ogden to Salt Lake City and return, with stop-over, will be given without charge on round trip tickets to Yellowstone Park via Union Pacific from Cheyenne, Denver or points east or south thereof, also on transcontinental tickets via Union Pacific between

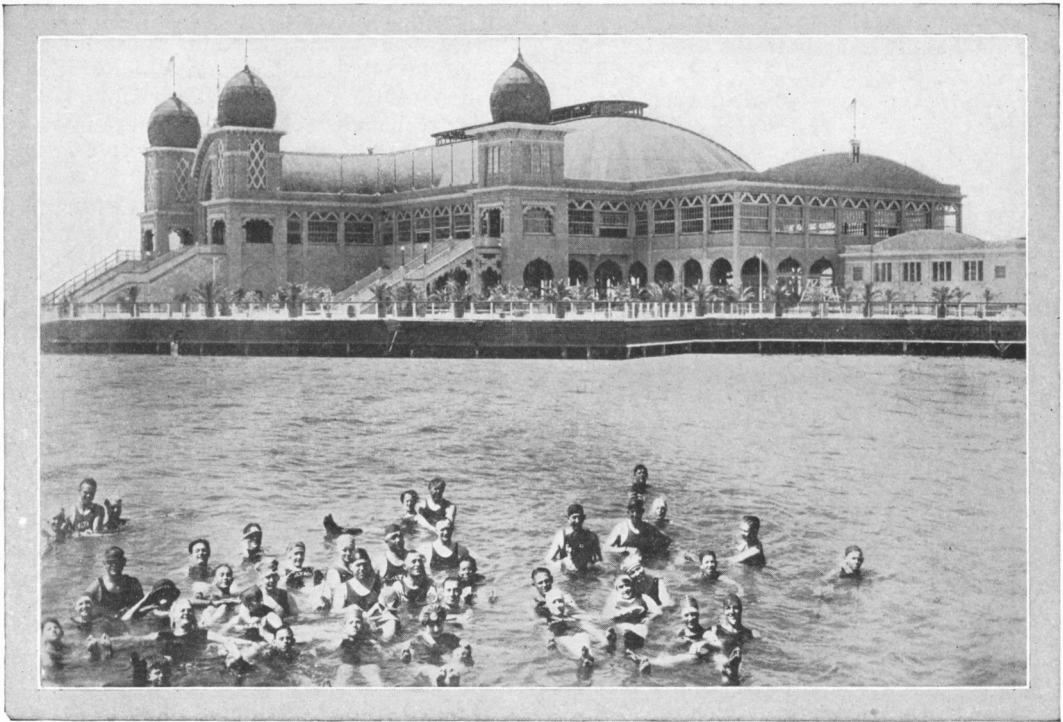
Cheyenne, Denver or points east or south thereof and points beyond Pocatello, Ogden, or Salt Lake City, on which side trip from Ogden to West Yellowstone is made. Side trip tickets may be obtained from any Union Pacific representative or ticket agent at Ogden.

Salt Lake City is a city of marked beauty and individuality, at the base of the Wasatch Mountains; the chief features of interest are the Mormon Temple and the Tabernacle (free recitals on the superb organ are given daily except Sunday), the Deseret Museum, the canyons of the Wasatch, and Great Salt Lake. No one should miss bathing in the unbelievably buoyant waters of the lake at new Saltair Beach, reached by fast electric cars. A few miles from the thriving city of Ogden, Utah, is Ogden Canyon, a deep, romantic gorge in the Wasatch Mountains, reached by electric cars; "The Hermitage," a noted and picturesque resort, is situated there.

From Salt Lake City or Ogden, convenient side trips may be made to the wonderful color lands in Southern Utah. —Zion and Bryce Canyon National Parks, the Cedar Breaks, and on through beautiful Kaibab National Forest, with its thousands of deer, to Grand Canyon National Park. Commodious motor busses make regular five-day tours of the entire region, with shorter trips to individual attractions. A modern hotel and attractive lodges, including the splendid new Grand Canyon Lodge in Grand Canyon National Park, provide accommodations of rustic luxury, and the dining rooms serve excellent meals. Very attractive rates are obtainable for combination tours of Yellowstone, Zion, Bryce Canyon and Grand Canyon National Parks.



Jackson Lake, Mt. Moran and the Grand Tetons, a side trip from Yellowstone or from Victor, Ida.



Bathers and the New Casino, Saltair Beach, Salt Lake City, Utah. Salt Lake City may be visited en route Yellowstone National Park, via Union Pacific, without extra rail cost



Dining in Great Salt Lake, where you can not sink

Tickets to Yellowstone National Park via Union Pacific

DURING the Park season, round-trip excursion tickets at reduced fares are sold at practically all stations in the United States and Canada to West Yellowstone, Mont., as a destination. Such tickets reading via Union Pacific from eastern cities will, upon request, be honored via Denver without extra charge, thus affording opportunity to visit Rocky Mountain National Park. From the East, Middle West and South, round-trip excursion tickets may be routed so that passenger may enter the Park at West Yellowstone and depart from either Lander, Gardiner, Cody, Gallatin or Bozeman.

Passengers desiring to visit Yellowstone Park as a side-trip on journeys to other destinations may obtain stop-over privileges on both one-way and round-trip tickets (during Park season) at Ogden or Salt Lake City, Utah, or Pocatello, Idaho. The round-trip side-trip fare to West Yellowstone is \$15.10 from either Ogden or Salt Lake City.

From Pocatello round-trip side-trip fare on tickets reading between Denver, Colorado Springs or Pueblo, Colorado, Cheyenne, Wyoming, Missouri River Gateways, and points east or south thereof on the one hand, and Pendleton, Oregon, and points beyond on the other hand, will be \$3.92. And to holders of tickets reading to or from points east of Pendleton, Oregon, through Pocatello, Idaho; also to holders of tickets reading to or from points west of Denver, Colorado Springs or Pueblo, Colorado, and Cheyenne, Wyoming, through Pocatello, Idaho, the round-trip side-trip fare from Pocatello to West Yellowstone will be \$8.70.

Coupons covering automobile transportation and accommodations at the hotels or lodges for the "4½ Day" tour of the Park may be included in railroad tickets at authorized additional charges, which are the same as those in effect at the Park.

The hotel lodgings for 4½ day tour are those provided for in the minimum American plan hotel

rate of \$6.50 per day and do not include bath. The American plan hotel rates per day including room with private bath (according to location) are:

1 person in room, \$10.00 to \$11.00. 2 persons in room, \$9.00 to \$10.00 per person. With bath between, 3 persons in 2 rooms, \$9.00 to \$10.00 each. 3 persons in one room, private bath, \$8.50 to \$9.00 each. 4 persons in 2 rooms with bath between, \$8.50 to \$9.00 per person. When room with bath is used at hotels allowance of \$6.50 per day will be made to holder of a \$54.00 ticket.

The charge for the 4½ day tour includes 14 meals and 4 lodgings. Passengers using tours leaving West Yellowstone in the afternoon (3.45 p.m.), are entitled to a refund of the charge for 2 meals in connection with the tour both ways via West Yellowstone and one meal each in connection with others. Refunds will be made by the Yellowstone Park Hotel Co., or Lodge Co., as case may be, when Park ticket is issued at West Yellowstone.

The Park tour charges do not include breakfast at West Yellowstone station, which is served table d'hôte, price \$1.25, in the Union Pacific restaurant.

Longer time than provided by the regular "4½ Day" tour may be spent at stop-over points, if desired. Additional meals and lodging are charged for at the rate of \$6.50 a day at hotels and \$4.50 a day at the lodges.

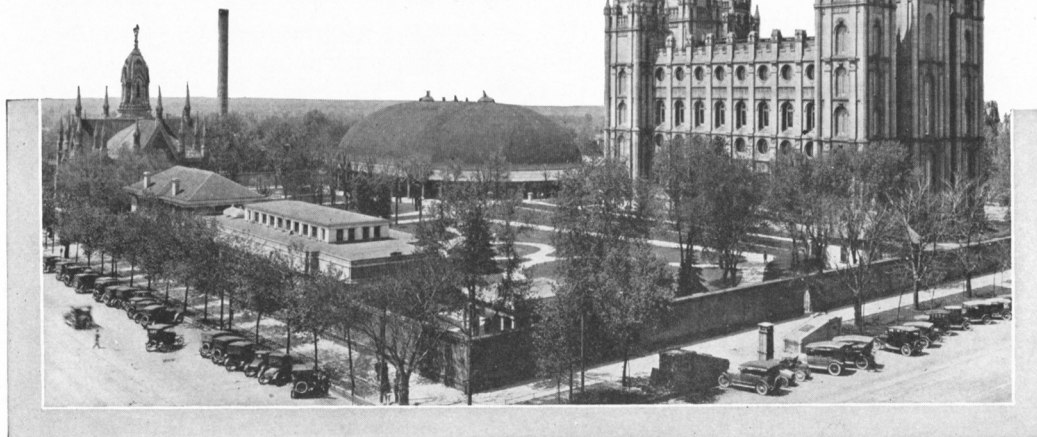
Through tickets are *not* sold including either hotel or lodge accommodations for children under 8 years of age, but half rate covering meals and lodging will be made locally in Yellowstone Park by the Yellowstone Park Hotel Co. and the Yellowstone Park Camps & Lodge Co. for children under 8 years of age.

The Yellowstone Park Transportation Company will make one-half rate for children five (5) and under twelve (12) years of age. Children under five (5) years of age will be carried free when accompanied by parent or guardian, unless occupying seat space, when half-fare will be charged.

Holders of regular Park Tour tickets will be carried over the summit of Mt. Washburn upon payment of \$2.00 additional per passenger.

Cost of "4½ Day" Park Tour from West Yellowstone

	Including Motor Transportation and Meals and Lodging		Motor Transportation Only
	At Hotels	At Lodges	
For adults, and children 12 years old and over	\$54.00	\$45.00	\$25.00
For children 8 years old and under 12 years . .	41.50	32.50	12.50
For children 5 years old and under 8 years . . .	27.00	22.50	12.50

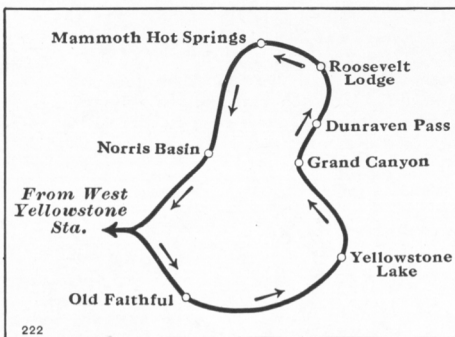


See the Mormon Shriners at Salt Lake City, en route Yellowstone National Park via Union Pacific



President and Mrs. Coolidge watching the bears at Roosevelt Lodge

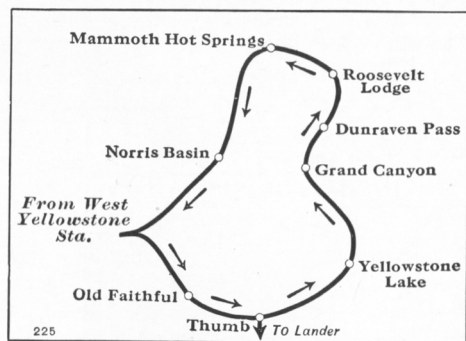
Schedules of Automobile Tours Through the Park



In West Yellowstone, Out West Yellowstone

Leave West Yellowstone 9.30 a.m. Stop-overs at Fountain Paint Pot and Lower Geyser Basin. First night at Old Faithful. Second day arrive Yellowstone Lake, with stop-over at Thumb Paint Pots. Second night at Lake Hotel or Lodge. Third day arrive Grand Canyon, with stop-over at Artist or Inspiration Point. Third night at Grand Canyon. Fourth day arrive Mammoth Hot Springs, with stop-overs at Dunraven Pass and Roosevelt Lodge. Fourth night at Mammoth Hot Springs. Fifth day arrive West Yellowstone 4.45 p.m., with stop-over at Norris Geyser Basin.

Leave West Yellowstone 3.45 p.m., same route, stop-overs and lodgings as above, arriving West Yellowstone 11.10 a.m. fifth day.



In West Yellowstone, Out Lander

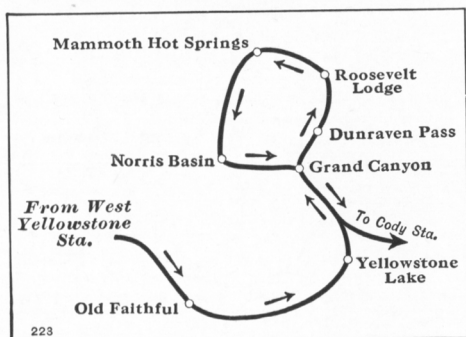
Leave West Yellowstone 9.30 a.m. Stop-overs at Lower Geyser Basin, Old Faithful, Fountain Paint Pot, and Thumb Paint Pots. First night at Lake Hotel or Lodge. Second day arrive Grand Canyon, with stop-over at Artist or Inspiration Point. Second night at Grand Canyon. Third day arrive Mammoth Hot Springs, with stop-overs at Dunraven Pass and Roosevelt Lodge. Third night at Mammoth Hot Springs. Fourth day arrive Old Faithful, with stop-overs at Norris Basin, Fountain Paint Pot, and Lower Geyser Basin. Fourth night at Old Faithful. Fifth day arrive Jackson Lake Lodge, near Moran. Fifth night at Jackson Lake Lodge. Sixth day arrive Lander 5.00 p.m.

Leave West Yellowstone 3.45 p.m. Same route and stop-overs as above. First night at Old Faithful, second at Lake Hotel or Lodge, others same as above, arriving Lander 5.00 p.m., sixth day.



The Hermitage, a picturesque resort in Ogden Canyon, a few miles from Ogden, Utah

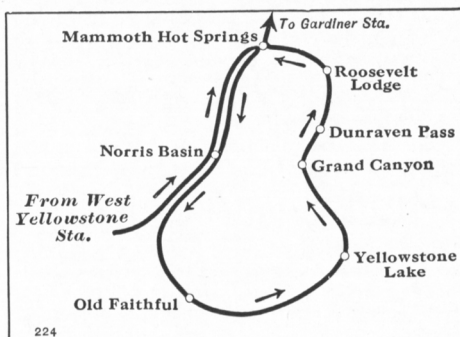
Schedules of Automobile Tours Through the Park



In West Yellowstone, Out Cody

Leave West Yellowstone 9.30 a.m. Stop-over at Fountain Paint Pot and Lower Geyser Basin. First night at Old Faithful. Second day arrive Yellowstone Lake, with stop-over at Thumb Paint Pots. Second night at Lake Hotel or Lodge. Third day arrive Mammoth Hot Springs via Grand Canyon, with stop-overs at Artist or Inspiration Point, Dunraven Pass and Roosevelt Lodge. Third night at Mammoth Hot Springs. Fourth day arrive Grand Canyon via Norris Geyser Basin. Fourth night at Grand Canyon. Fifth day arrive Cody 4.55 p.m., with stop-over at Sylvan Pass Lodge and Shoshone Canyon and Dam.

Leave West Yellowstone 3.45 p.m., same route, stop-overs and lodgings as above, arriving Cody 4.55 p.m., fifth day.



In West Yellowstone, Out Gardiner

Leave West Yellowstone 9.25 a.m. First night at Mammoth Hot Springs. Second day arrive Old Faithful, with stop-overs at Fountain Paint Pot and Lower Geyser Basin. Second night at Old Faithful. Third day arrive Yellowstone Lake, with stop-over at Thumb Paint Pots. Third night at Lake Hotel or Lodge. Fourth day arrive Grand Canyon, with stop-over at Artist or Inspiration Point. Fourth night at Grand Canyon. Fifth day arrive Gardiner 6.52 p.m., via Mammoth Hot Springs, with stop-overs at Dunraven Pass, Roosevelt Lodge, and Gardiner Canyon.

Leave West Yellowstone 3.45 p.m., same route, stop-overs and lodgings as above, arriving Gardiner 6.52 p.m., fifth day.



Longs Peak, Rocky Mountain National Park, Colorado. Colorado may be visited without extra rail cost, en route Yellowstone Park via Union Pacific

Consult Union Pacific Representative

Any Union Pacific representative listed on page 39 will be glad to help you plan a trip to Yellowstone Park or to any other places reached by the Union Pacific System and give you a close estimate of the entire cost. Information not contained in this booklet will be furnished by our travel experts. This service is free. Ask also about personally escorted all-expense tours. (See page 38.)

Park Administration

Yellowstone National Park is under the jurisdiction of the Director, National Park Service, Department of the Interior, Washington, D. C. The Park Superintendent is located at Mammoth Hot Springs.

What to Wear

Warm clothing should be worn, and one should be prepared for the sudden changes of temperature common at an altitude of 7,500 feet. Visitors should have medium weight overcoats, jackets, or sweaters. Riding breeches and puttees are popular with both men and women who like to climb, ride, and tramp. Linen dusters are desirable and may be purchased in the Park. Stout outing shoes are best suited for walking about the geyser formations and terraces, and for mountain use. Women's ordinary street shoes are not well adapted for these walks. Tinted glasses, serviceable gloves and a pair of field or opera glasses will be found useful.

Women Tourists

Fully 60 per cent of the Park visitors are women and many of them travel unescorted. There are

competent women attendants at the hotels and lodges whose special duty is to look after the welfare of women. Union Pacific escorted all-expense tours are very attractive for unescorted women.

Bath Houses

Natural hot-water bathing pools are maintained at Upper Geyser Basin and Mammoth Hot Springs. Rates, 50 cents in large pool at Old Faithful and Mammoth; \$1.00 in private pool at Old Faithful.

Church Services

The chapel in Yellowstone National Park is located at Mammoth Hot Springs. Protestant and Catholic services are held every Sunday, and are bulletined in hotels and lodges.

Medical Facilities

Physicians and a surgeon of long professional experience have headquarters at Mammoth Hot Springs and are constantly available for professional service at any place in the Park, upon call. Also at Mammoth Hot Springs is a well-equipped hospital with trained nurses and other skilled personnel. Trained nurses are also stationed in each hotel and lodge, and adequately equipped dispensaries are available. Rates for medical and hospital service are the same as prevail in cities near the Park.

Guide and Lecture Service

The National Park Service has established a nature guide service at Mammoth Hot Springs, Old Faithful, Lake, Canyon, and at Roosevelt Lodge,



Interior of the handsome Union Pacific Dining Lodge at West Yellowstone

where guides and lecturers are maintained on the ranger force to explain and interpret Park features to the public. Trips are made afield, and are so arranged as to be available to everybody. This service is free, as are the evening lectures on the history, geology, flora and fauna of the Park.

At Mammoth Hot Springs is a combined museum and information office near the administration headquarters and post office.

Mail, Telegraph and Telephone

Mail addressed to travelers in care of Yellowstone Park Hotel Co., or Yellowstone Park Lodge Co. (whichever patronized) at Yellowstone Park, Wyoming, will be delivered to the person addressed anywhere in the Park. Telegraph and telephone service between all hotels and lodges; telegraph to all parts of the world; telephone connections throughout the United States. Address your message to the hotel or lodge where addressee will be. If party is at some point other than that of receipt, delivery of message entails a forwarding charge. Money transfers at all hotel offices in the Park.

Baggage

The Yellowstone Park Transportation Company will carry free, not to exceed twenty-five pounds of hand baggage, for each passenger. Trunks cannot be carried in the automobiles. Arrangements can be made with the Transportation Company at any of the gateways for the transportation of trunks.

The liability of the Yellowstone Park Transportation Co., for loss of or damage to suitcase or grip is limited to \$25.00, and for loss of or damage to trunk liability is limited to \$100.00. Passengers desiring

additional protection to baggage may obtain an insurance policy at small cost from the Transportation Agent at West Yellowstone.

Storage charges for baggage are waived by the Union Pacific System at West Yellowstone Station, Pocatello, Idaho Falls, Ogden or Salt Lake City, for actual length of time consumed by passengers in making Park trip. Baggage may be checked to West Yellowstone station and passengers entering the Park via one station and leaving via another will find certain regulations for free checking of baggage to station whence they leave the Park.

Haynes Picture Shops

Pictures, albums, guide books, postcards, camera supplies and printing and developing service may be had at Haynes Picture Shops located in the hotels and lodges and elsewhere in the Park.

Special Automobile Service

Passengers holding coupons for regular Park Tour may charter special touring car for complete tour upon payment of \$25.00 per day additional, minimum of five adult fares. Special six-passenger cars when available for short trips in vicinity of hotels and lodges may be had at \$6.00 per hour.

Saddle Horse Trips and Guides

Saddle horses and competent guides are available at the hotels and lodges at reasonable rates approved by the National Park Service. Horseback trips afford opportunities to get far away from roads and beaten paths into the remoter scenic regions and to see many of the more timid wild animals that inhabit the Park. The Dude-Ranches in Jackson Hole offer attractive outings.



A Union Pacific limited train in Echo Canyon, Utah, en route Salt Lake City and Yellowstone

Union Pacific Escorted All-Expense Tours to Yellowstone National Park

If you wish a real care-free vacation in the West, our Department of Tours can provide it. At moderate cost, and with each detail affecting your comfort arranged in advance, tours leave Chicago every Saturday and Monday, beginning June 15, during the Park season. Also Thursday departures during July and August.

The following tours will be operated: Two weeks' tours to Yellowstone and Rocky Mountain National Parks, Salt Lake City, Denver, Colorado Springs.

Fifteen-day tours to Yellowstone, Zion-Grand Canyon-Bryce Canyon National Parks, Cedar Breaks, and Salt Lake City.

Thirteen-day tours to Yellowstone and Rocky Mountain National Parks.

Twelve-day tours to Yellowstone National Park, Denver, Colorado Springs.

Eleven-day tours to Yellowstone Na-

tional Park, Salt Lake City, Denver.

Similar tours to Zion-Grand Canyon-Bryce Canyon National Parks, and Colorado; to California (including Yosemite Park) and the Pacific Northwest and Alaska (including Rainier National Park and Jasper Park). Any one tour may be combined with any other.

Either lodges or hotels may be used in Yellowstone Park; we have escorted service both ways.

An experienced railroad representative accompanies each tour, arranging all details, permitting you to enjoy every minute of the trip.

For complete information apply to

J. L. BURGAR

Manager Department of Tours

Maintained by

Chicago & North Western Railway

and Union Pacific System

148 South Clark St.

Chicago, Illinois



Grand Canyon Hotel accommodates 600 guests and is one of the most imposing buildings in the Park

These Representatives of the Union Pacific System Will Help You Plan a Vacation or Business Trip

Aberdeen, Wash.	3-4 Union Passenger Station, K and River Streets	F. E. STUDEBAKER, District Freight and Passenger Agent
Astoria, Ore.	Union Pacific System Wharf	G. W. ROBERTS, District Freight and Passenger Agent
Atlanta, Ga.	1232 Healey Building	W. G. ELGIN, General Agent
Bend, Ore.		E. H. McALLEN, Traveling Freight and Passenger Agent
Birmingham, Ala.	742 Brown-Marx Bldg., First Avenue and 20th Street	J. H. DOUGHTY, General Agent
Boise, Idaho	City Ticket Office, 823 Idaho Street	JOEL L. PRIEST, General Agent
Boston, Mass.	207-8 Old South Bldg., 294 Washington Street	WILLARD MASSEY, General Agent
Butte, Mont.	229 Rialto Bldg., 4 South Main Street	HENRY COULAM, General Agent
Cheyenne, Wyo.	Union Pacific Station	N. A. MILLER, Ticket Agent
Chicago, Ill.	City Ticket Office, 6 South LaSalle Street, Otis Building	G. R. LEMMER, General Agent, Passenger Department
Cincinnati, Ohio	705-6 Dixie Terminal Bldg., Fourth and Walnut Streets	W. H. CONNOR, General Agent
Cleveland, Ohio	941 Union Trust Bldg., 925 Euclid Avenue	J. STANLEY ORR, District Passenger Agent
Council Bluffs, Iowa	City Ticket Office, Chieftain Hotel, 36 Pearl Street	W. H. BENHAM, General Agent
Dallas, Texas	909 Magnolia Bldg., Commerce and Akard Streets	H. B. ELLER, City Ticket Agent
Denver, Colo.	City Ticket Office, 601 Seventeenth Street	E. G. KOENEMAN, General Agent
Des Moines, Iowa	407 Equitable Bldg., 6th and Locust Streets	I. W. CARTER, Assistant General Passenger Agent
Detroit, Mich.	508 Transportation Bldg., 131 Lafayette Boulevard, West	F. P. STAFFORD, General Agent
Eugene, Ore.	Osburn Hotel	A. R. MALCOLM, General Agent
Fort Collins, Colo.	Union Pacific Station	A. W. BAKER, Traveling Freight and Passenger Agent
Fresno, Calif.	207-8 Rowell Bldg., Tulare Street and Van Ness Avenue	L. B. WHITEHEAD, Passenger and Ticket Agent
Glendale, Calif.	129 South Brand Boulevard	T. F. BROSAHAN, General Agent
Hollywood, Calif.	City Ticket Office, Christie Hotel, 6732 Hollywood Boulevard	C. A. REDMOND, General Agent
Kansas City, Mo.	City Ticket Office, 805 Walnut Street	H. W. HICKS, Gen'l Agt., Passenger Department
Leavenworth, Kan.	Union Station, Main and Delaware Streets	SETH C. RHODES, General Agent, Passenger Department
Lewiston, Idaho	224 Breier Building	A. E. MARTENY, General Agent
Lincoln, Neb.	City Ticket Office, 1308 N Street, Federal Trust Building	H. J. BERGER, Traveling Freight and Passenger Agent
Long Beach, Calif.	120 West Ocean Boulevard	A. D. GRANT, General Agent
Los Angeles, Calif.	City Ticket Office, 732 South Broadway	R. W. SMOCK, General Agent
Milwaukee, Wis.	703 Straus Bldg., 230 Wisconsin Avenue	J. CRUICKSHANK, General Agent, Passenger Department
Minneapolis, Minn.	618 Metropolitan Life Bldg., 125 South Third Street	A. T. JACKSON, District Passenger Agent
New Orleans, La.	201 New Orleans Bank Bldg., 226 Carondelet Street	K. T. MINDEMANN, General Agent
New York, N. Y.	205 Farmers' Loan and Trust Company Bldg., 475 Fifth Avenue	E. H. HAWLEY, General Agent
New York, N. Y.	2001 Transportation Bldg., 225 Broadway	R. A. PETERS, General Agent
Oakland, Calif.	215 Central Bank Bldg., 436 14th Street	J. B. DEFRIEST, General Agent
Ogden, Utah	214 David Eccles Bldg., 390 24th Street	H. A. LAWRENCE, District Passenger Agent
Omaha, Neb.	City Ticket Office, 1523 Farnam Street	J. B. DEFRIEST, General Agent
Pasadena, Calif.	222 East Colorado Street	C. F. FARMER, General Agent
Philadelphia, Pa.	508 Commercial Trust Bldg., 15th and Market Street	H. L. LAUBY, General Agent
Pittsburgh, Pa.	216 Oliver Bldg., Smithfield Street and Sixth Avenue	JOHN D. CARTER, General Agent
Pomona, Calif.	Union Pacific System Passenger Station	EDWARD EMERY, District Passenger Agent
Portland, Ore.	City Ticket Office, 341 Washington Street	K. L. HANDY, Passenger and Freight Traffic Agent
Redlands, Calif.	14 Cajon Street	E. A. KLIPPEL, JR., General Agent Passenger Department
Reno, Nev.	200 Nevada State Life Bldg., Second and Center Streets	L. C. FOWLER, Passenger and Freight Traffic Agent
Riverside, Calif.	Glenwood Mission Inn, 680 Main Street	E. E. LARKIN, General Agent
Sacramento, Calif.	217 Forum Bldg., 1107 Ninth Street	R. E. DRUMMY, General Agent
St. Joseph, Mo.	City Ticket Office, 517 Francis St.	C. T. SLAUSON, General Agent
St. Louis, Mo.	203 Carleton Bldg., 308 North Sixth Street	LOUIS MOTTER, General Freight and Passenger Agent, St. J. and G. I. Ry.
Salt Lake City, Utah	City Ticket Office, Hotel Utah, Main and South Temple Streets	J. L. CARNEY, General Agent
San Diego, Calif.	345 Plaza Street	E. A. SHEWE, District Passenger Agent
San Francisco, Calif.	City Ticket Office, 673 Market Street	C. C. JEWETT, General Agent
San Jose, Calif.	501 First National Bank Building	H. A. BUCK, General Agent, Passenger Department
San Pedro, Calif.	101 West Seventh Street	R. M. RITCHIEY, General Agent
Santa Ana, Calif.	325 North Main Street	W. F. NASH, JR., General Agent
Santa Monica, Calif.	602 Santa Monica Boulevard	W. A. SHOOK, General Agent
Sawtelle, Calif.	1613 Sawtelle Boulevard	S. C. FROST, Ticket Agent
Seattle, Wash.	201 Union Station, 4th Avenue and Jackson Street	JOHN D. POST, City Passenger and Ticket Agent
Spokane, Wash.	City Ticket Office, 1403 Fourth Avenue	W. H. OLIN, Assistant General Freight and Passenger Agent
Tacoma, Wash.	727 Sprague Avenue	A. L. IVES, General Agent, Passenger Department
Toronto, Ontario	114 South Ninth Street	T. J. DOWD, District Freight and Passenger Agent
Tulsa, Okla.	201 Canadian Pacific Bldg., 69 Yonge Street	T. I. McGRATH, District Freight and Passenger Agent
Walla Walla, Wash.	320 Kennedy Bldg., 319 South Boston Street	GEO. W. VAUX, General Agent
Whittier, Calif.	Baker Bldg., Main and Second Streets	F. F. ROBINSON, General Agent
Yakima, Wash.	Union Pacific System Passenger Station	J. H. CUNNINGHAM, District Freight and Passenger Agent
	Union Pacific Bldg., 104 West Yakima Avenue	G. B. KENNARD, City Freight and Passenger Agent
		H. M. WEST, District Freight and Passenger Agent

C. J. COLLINS
General Passenger Agent
OMAHA, NEB.

JOHN L. AMOS
Assistant Traffic Manager
Union Pacific Bldg.
SALT LAKE CITY, UTAH

D. S. SPENCER
General Passenger Agent
SALT LAKE CITY, UTAH

A. S. EDMONDS
Assistant Traffic Manager
Pitcock Block
PORTLAND, ORE.

W. K. CUNDIFF
General Passenger Agent
PORTLAND, ORE.

R. B. ROBERTSON
Assistant Traffic Manager
Pacific Electric Bldg.
LOS ANGELES, CALIF.

GEO. R. BIERMAN
General Passenger Agent
LOS ANGELES, CALIF.

A. V. KIPP
Assistant Traffic Manager
681 Market Street
SAN FRANCISCO, CALIF.

W. S. BASINGER, Passenger Traffic Manager, OMAHA, NEB.

Union Pacific System Publications

The following publications, attractively illustrated and containing useful travel information and authentic descriptions of the scenery may be obtained on application to any representative listed above.

Western Wonderlands.	The Pacific Northwest and Alaska.	Death Valley.
California. Hawaii Tours.	Dude Ranches Out West.	Folder Map of the United States.
Colorado Mountain Playgrounds. Along the Union Pacific System.		Escorted All-Expense Tours.
Zion-Bryce Canyon-Grand Canyon National Parks.		Utah-Idaho Outings.

