

Choose this great
D E P E N D A B L E
B U S S Y S T E M
FOR COMFORT, SAFETY, ECONOMY
between

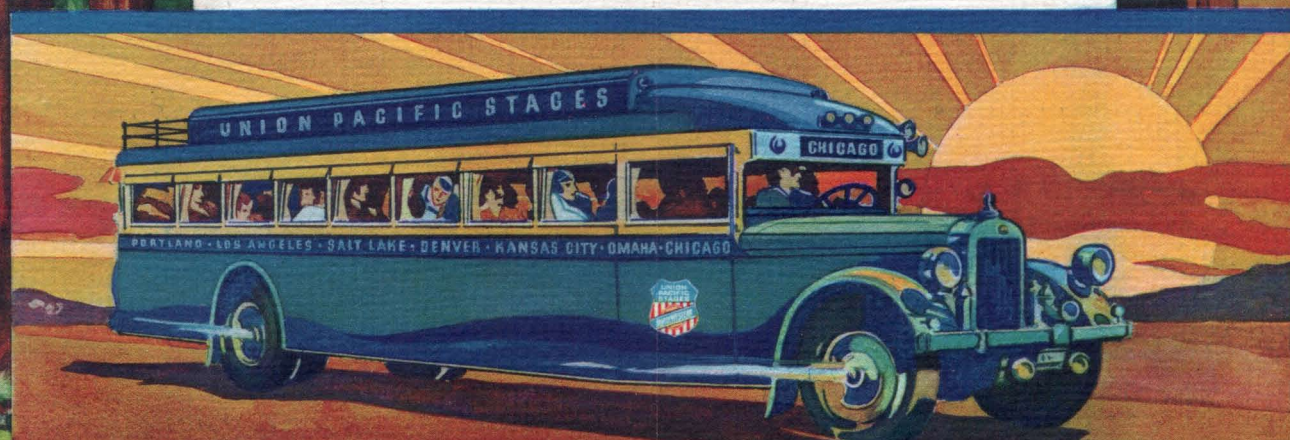


*These Scenic Short Cuts
save dollars and hours.*

Turn to a map of the United States and put your finger on almost any of the National Parks, Historic Shrines, or famous beauty spots of the West. You will discover that the highways of these Scenic Short Cuts directly serve almost every one of them! This means that with the liberal stop-over privileges allowed on your bus ticket you can stop off and become thoroughly acquainted with America's outstanding scenic attractions on your East-West trip.

From the deep-cushioned comfort of your reclining chair in the trim buses of this great transcontinental travel system you see all the changing glamour of Scenic America . . . in ease and safety . . . free from responsibility and worry. Along these historic routes, courageous pioneers fought their slow way . . . weary and dangerous for them . . . so comfortable and pleasant for you.

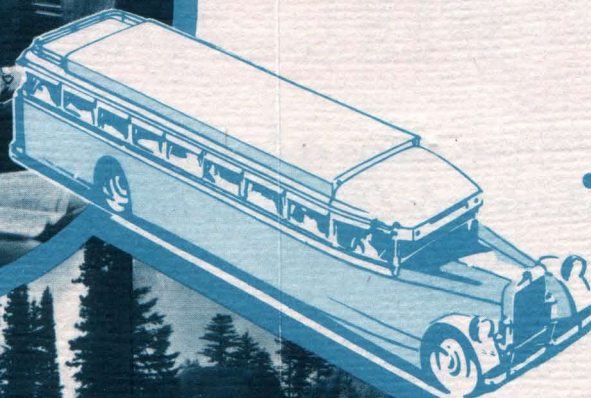
Prove for yourself just how delightful and comfortable this East-West trip can be. Follow these Scenic Short Cuts in a comfortable bus, secure in the protection of one of America's greatest transcontinental travel systems.



A M E R I C A ' S M O S T B E A U T I F U L M O T O R B U S R O U T E

• RIGHT THROUGH THE HEART

...IN A MOD



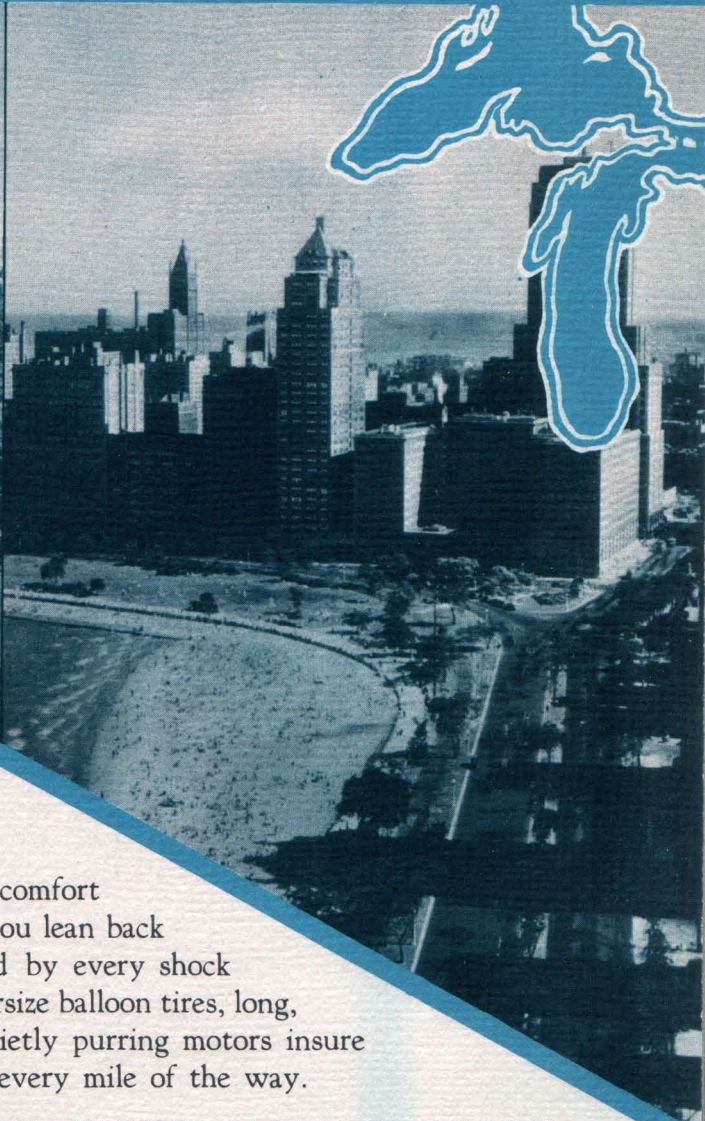
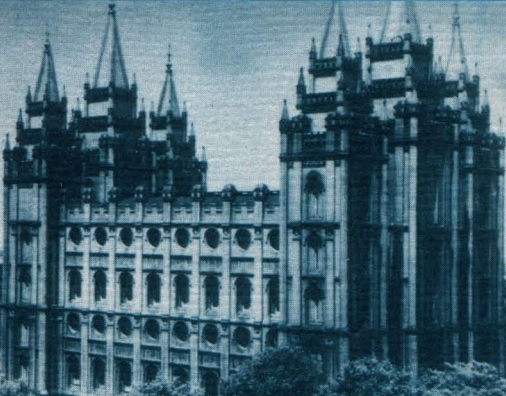
• MORE TO SEE - MORE
TO ENJOY - TRAVELING
THIS MODERN WAY..

What an intimate, carefree
really see our great nation! A
swings along scenic highways
lar mountain passes...glides
along the tree-lined
turn of the road
liberal stop
beauty



OF SCENIC HISTORIC AMERICA...

ERN EASY-RIDING MOTOR BUS



way this is to
trim, easy-riding bus
... it sweeps over spectacu-
through peaceful valleys... paces
boulevards of interesting cities. Every
brings something new and interesting. And
overs permit you to stop and visit any of the
spots along the way as fancy dictates.

• PERFECT COMFORT IN NEW-TYPE BUSES

From start to finish your trip by bus is one of comfort and ease. As the trim bus rolls smoothly along, you lean back in deep-cushioned, reclining chairs, protected by every shock absorber that science can devise. Big, oversize balloon tires, long, flexible suspension springs, and quietly purring motors insure the utmost in travel comfort every mile of the way.

• THIS SYSTEM INSURES SAFETY - CERTAINTY

For your own peace of mind choose this great, dependable bus system. Insure yourself a trip that's safe and certain, filled with carefree enjoyment! A ticket over some irresponsible, fly-by-night bus line might save a dollar or two at the beginning, but in the end you pay dearly in delays, discomfort and inconvenience. Play safe — choose this *dependable* bus travelway.



Chicago, Kansas City, Omaha, Denver Cheyenne



CITIES of History, these! Ultra-modern Chicago, once the site of Old Fort Dearborn, now a world center of industry and art. Roaring old Cheyenne, now capital of the cattle country. The Westport Landing of pioneer outfitting days, today Kansas City, the beautiful. Denver, frontier mining metropolis, now the Queen City of the Rockies. Historic Omaha, where the Overland Trail began, today fulfilling her traditions of commerce. And between all these, your bus trip along the pioneer trade routes of yesterday takes you thru Illinois, Iowa, Nebraska, Kansas . . . the heart of the world's finest agricultural empire. From Omaha, scenic routes turn northward to beautiful Lake Okoboji and Spirit Lake in northern Iowa. And direct connecting lines reach up to Minneapolis, St. Paul, and into Minnesota's charming land of 10,000 lakes. Take your choice of two main East-West routes between Omaha and Cheyenne, or through Kansas City, Denver to Cheyenne and the Pacific Coast. Chicago or the West Coast are reached with equal ease by either of them. Your bus agent will recommend points of interest along the way.



THROUGH THE HEART OF THE WHEAT EMPIRE

CHICAGO TOWERS

ROMANTIC ROADS ACROSS BROAD FERTILE

PLAINS THAT RISE TO MEET THE MAJESTIC ROCKIES



TYPICAL ROCKY MOUNTAIN VACATION LAND

TOP O' THE WORLD PLAYGROUNDS

Favorite recreation lands in the Rocky Mountains..

What infinite variety colorful Colorado offers! No matter what your favorite vacation sport or recreation—you'll find it waiting among these mile-high playgrounds.

Brisk mountain breezes revive jaded appetites. Gem-like lakes and swift mountain streams lure the fisherman. There are hundreds of miles of trails and footpaths that reveal obscure and little known beauty spots. Famous mineral waters restore health and vigor to tired bodies.

From Denver, connecting bus lines take you to the Garden of the Gods, Cave of the Winds, Seven Falls, Berthoud Pass and the famous Royal Gorge. Traveling to Top O' the World playground by bus allows plenty of time to leisurely explore their full fascination.



ROCKY MOUNTAIN PARK

ROCKY MOUNTAIN NATIONAL PARK

Ideally situated less than a hundred miles from Denver, and offering some of the world's most beautiful mountain scenery, Rocky Mountain National Park is easily the most popular and accessible vacation spot in Colorado. Stay in hospitable chalets while you spend days in riding, hiking, and motoring to famous Long's Peak, beautiful Loch Vale, Mills Moraine, Chasm Lake, and dozens of other beauty spots.

PIKES PEAK. Your visit to Colorado playgrounds will be incomplete without taking the trip to the summit of Pikes Peak, fittingly named the "Monument of the Continent." The top of America's most famous mountain is easily reached by motor, horseback, or cog-road.

GARDEN OF THE GODS. Since the gay nineties the mecca of sightseeing Western travelers. Balanced Rock, The Three Graces, and other fantastic shapes have been eroded by wind and rain through eons of time. A short, pleasant trip from Denver by connecting bus takes you there.



LOCH VALE—COLORADO

THE OLD "WILD WEST" LIVES AGAIN!

Pioneer trails between Cheyenne and Salt Lake City

Blazed by Indians, trappers and gold seekers, the famous Overland Trail that winds across Wyoming's upland plateaus, between Cheyenne and Salt Lake City, is haunted with fascinating reminders of its adventurous past. Only yesterday this country was the scene of hair-raising adventures. Today, as your easy-riding bus slips along this smooth highway the old Wild West lives again in your quickened imagination.

Broad bus windows frame pictures of limitless range country and inspiring close-ups of the highest Rockies, capped with eternal snow. You may see a lone cow-puncher in the distance, silhouetted against the sky, watching his herd. Or watch a surprised antelope whisk away as the smooth-rolling bus rounds a corner.

In historic Cheyenne, old rip-roaring days come to life during the colorful "Frontier Days" held every summer.

Through Old Wyoming in the shadows of snow-capped peaks

And there's Laramie, fabled cow town of song and story at the highest altitude of any city between Denver and the Pacific; old Fort Bridger, from whence blue-coated cavalrymen raced in true movie style to innumerable rescues. You'll see, too, Green River, Devil's Slide in Echo Canyon, thriving Evanston, Rock Springs, Rawlins and hundreds of other fascinating places as your bus rolls through this land of scenic glory.

And here it is that you will find some of the west's most famous Dude Ranches. Along our route, in the Laramie, Medicine Bow, Snowy and Sierra Madre Ranges, tucked away in peaceful valleys, beside Lakes and mountain streams, these delightful ranches offer a healthful, exhilarating vacation at a very reasonable cost.

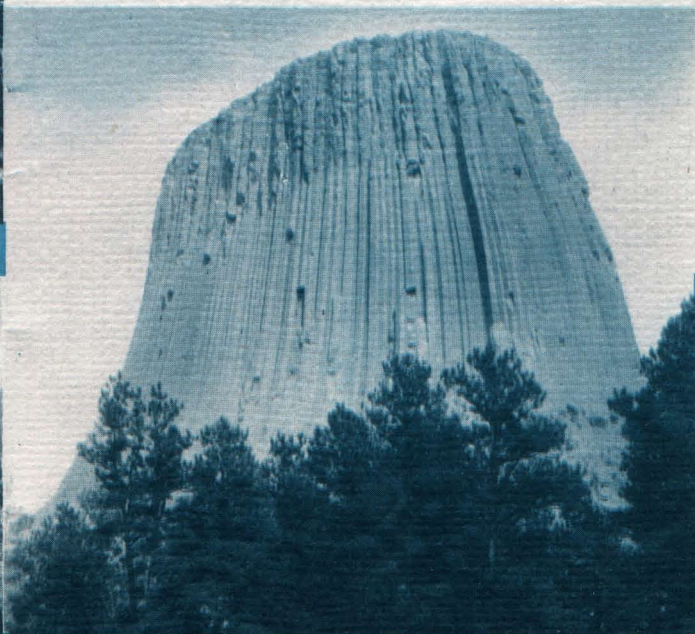
Today, you will even find Dude Ranches in the famous Jackson Hole Country to the North . . . a wild, rugged section, once the lair of the West's most notorious bad men. Nearby are Magic Yellowstone and the Grand Teton National Park where you may thrill to some of the most spectacular mountain scenery that America has to offer. A trip through scenic Wyoming will add a memorable chapter to your vacation travels.



PIKE'S PEAK AREA



GARDEN OF THE GODS



DEVIL'S TOWER—WYOMING

AMERICA'S MOST BEAUTIFUL SPOTS R

NATIONAL PARKS - VACATION PLAYGROUNDS -
ALL CONVENIENTLY AND ECONOMICALLY SERVED



NATIONAL PARKS

- | | |
|------------------|--------------------|
| (1) Yellowstone | (7) Crater Lake |
| (2) Bryce Canyon | (8) Yosemite |
| (3) Grand Canyon | (9) Rocky Mountain |
| (4) Zion Park | (10) General Grant |
| (5) Mt. Ranier | (11) Mt. Lassen |
| (6) Grand Teton | (12) Sequoia |

FAMOUS LAKES

- | | |
|----------------------|------------|
| (18) Lake Tahoe | California |
| (19) Okoboji | Iowa |
| (20) Spirit Lake | Iowa |
| (21) Coeur d'Alene | Idaho |
| (22) Great Salt Lake | Utah |
| (23) Crater Lake | Oregon |
| (24) Lake Michigan | Illinois |
| (25) Clear Lake | California |
| (26) Pyramid Lake | Nevada |

FAMOUS HIGHWAYS

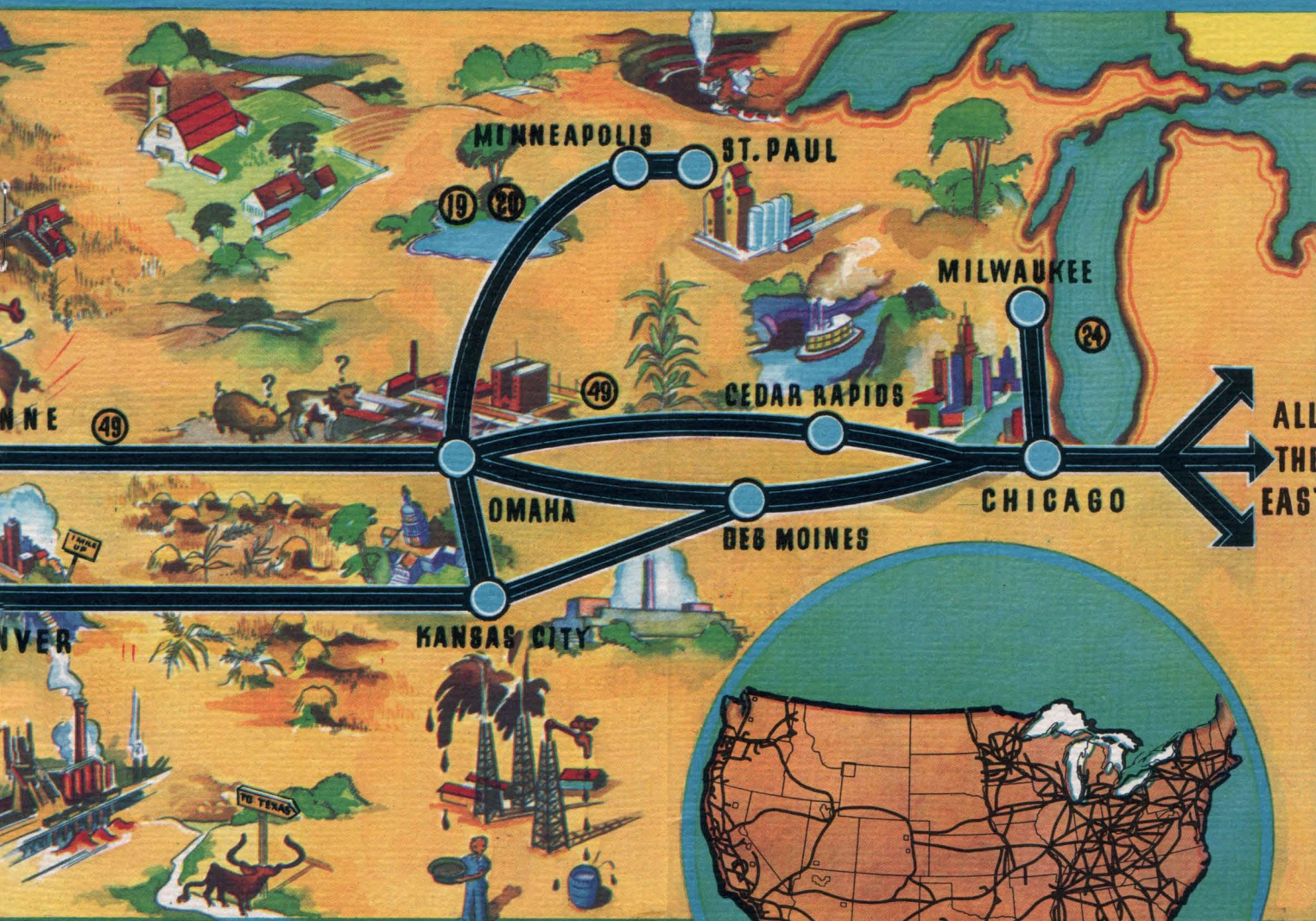
- | | | |
|------------------------|----------------------|------|
| (13) Columbia Gorge | (17) Mission Trails | (28) |
| (14) Zion Park Highway | (47) Oregon Trail | (27) |
| (15) Overland Route | (48) Arrowhead Trail | (29) |
| (16) Redwood Highway | (49) Lincoln Highway | (30) |

DESERT RESORTS

- | | | | |
|-------------------|-------------------|------------|------|
| (37) Death Valley | (38) Palm Springs | (39) Indio | (35) |
|-------------------|-------------------|------------|------|

REACHED BY THIS GREAT BUS SYSTEM

MOUNTAINS - RIVERS - LAKES - RESORTS - BEACHES
BY THE BUSES OF ONE DEPENDABLE TRAVEL SYSTEM



OCEAN RESORTS

California Beaches

- | | |
|---------------|--------------------|
| San Diego | (31) Monterey |
| Long Beach | (32) Santa Cruz |
| Santa Barbara | (33) San Francisco |
| Santa Monica | (34) Eureka |

Oregon Beaches

- | | |
|-----------|--------------|
| Oceanside | (36) Newport |
|-----------|--------------|

OTHER ATTRACTIONS

- | | |
|------------------------|-----------------|
| (40) Boulder Dam | Nevada |
| (41) Dude Ranches | All of the West |
| (42) Kaibab Forest | Arizona |
| (43) Cedar Breaks | Utah |
| (44) Craters of Moon | Idaho |
| (45) Pikes Peak Region | Colorado |
| (46) Garden of Gods | Colorado |

Interstate Transit Lines, Chicago & North Western Stages and Union Pacific Stages with principal connecting lines serve every part of the Nation.



LAKE COEUR D'ALENE—ONE OF MANY LAKES NEAR SPOKANE

SPOKANE—LAND OF LAKES

Surrounded by five of the National Parks of the United States and Canada and with seventy-six lakes within a radius of fifty miles, the scenic Empire which Spokane centers is a place of dreams-come-true for the traveler and vacationist. Much of the beauty of this land of lakes is revealed by a bus trip along the regular East-West route; and short side trips, by connecting lines, penetrate to the more remote vacation areas.

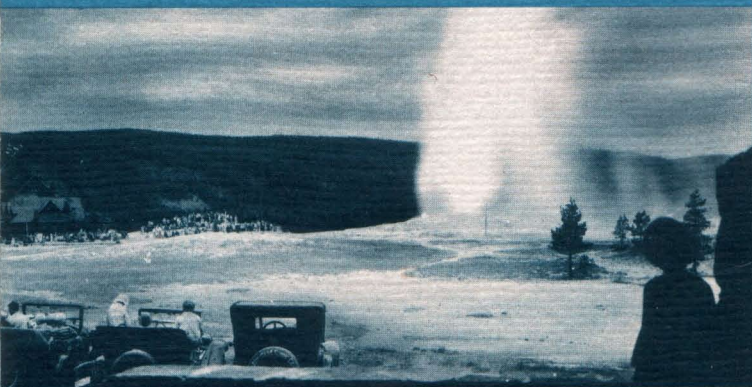
From the top of lofty Mt. Spokane, thirty-five miles

from the center of the city, there is a breath-taking panoramic view of the surrounding country that reveals seventeen lakes. Nearby is the famous Lewiston Spiral Highway, dropping 2,100 feet in eleven miles. Seven large lakes are set in the hills bordering Spokane Valley.

With Spokane as headquarters there are dozens of delightful one and two day trips into the surrounding mountains. Even the spectacular Canadian rockies are easily reached, offering you a fine opportunity to visit Banff and the world-famed Lake Louise.



GREAT FALLS—YELLOWSTONE



OLD FAITHFUL—YELLOWSTONE



MAGIC YELLOWSTONE

THERE is only one Yellowstone! No other spot in the world of similar area offers such a variety of astounding natural phenomena. Here you will see roaring geysers, periodically spouting vast quantities of water and steam hundreds of feet into the air. There are boiling mud pots . . . hot mineral springs . . . whole cliffs of black obsidian that looks just like black glass . . . great canyons . . . water falls . . . lakes teeming with fish . . . all easily accessible by good roads and well arranged tours.

Yellowstone is America's greatest big game sanctuary, famed the world over for its tame bears. Here, safely protected from hunters, black bears, brown bears and little fat roly-poly cubs will amble lazily across your path.

A few steps off the main traveled highway you can see herds of deer, antelope, elk and bison. In fact every kind of wild animal native to the Rocky Mountain region is to be found within the Park boundaries.

Fine hotels and inexpensive cottage camps are located near points of outstanding interest, permitting you to comfortably spend a day or a week in any part of this world famous Park.

COLUMBIA GORGE

One of the World's most spectacular highways

Through the glacial ranges of Oregon and Idaho winds the unique and beautiful Columbia Gorge Highway. A marvel of engineering, it joins the mighty Columbia River as it cleaves the high Cascades from Umatilla to the sea. To travel its length by bus is one of the most thrilling scenic experiences this country affords. Roaring cataracts and lacy waterfalls drop from stupendous heights to your feet . . . unthinkable distances greet your eyes from high observation points. Beacon Rock, The Dalles, Multnomah Falls, and brilliant Mt. Hood are only a few of the scenic rewards of your trip along the Columbia Gorge Route of the old Oregon Trail.

EVERGREEN PLAYGROUND

Portland • Tacoma • Seattle • Vancouver

Winter and summer, Evergreen Playgrounds of the Pacific Northwest offer an ideal setting for happy vacation days. There you find high adventure or peaceful repose among its cosmopolitan cities or seaside and mountain resorts. Teeming Portland is your base for a hundred trips to National Parks and nearby resorts. And there's Tacoma, beautiful city of parks and homes, framed against the foothills of glorious Mt. Ranier. The Seven Hills of Seattle, aggressive world port, harbor ships and men from every corner of the Pacific. And Vancouver is the starting point for Canadian vacations. From these, any spot in the Evergreen Playgrounds can be easily reached by bus.



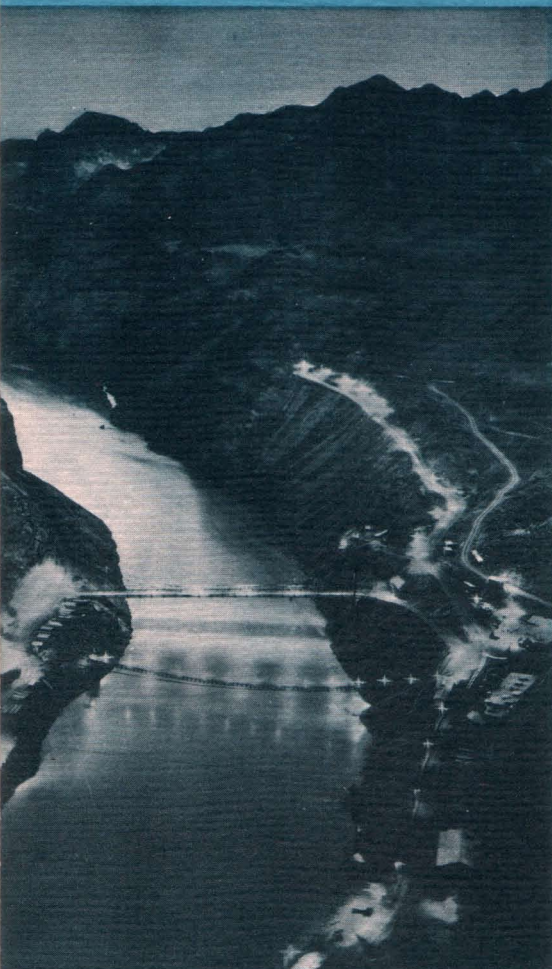
PORTLAND—MT. HOOD IN BACKGROUND



TUNNEL ON COLUMBIA RIVER HIGHWAY



COLUMBIA RIVER



ALONG the Zion Park Highway in southern Utah lie regions of unearthly beauty and coloring. Here patient Nature has created seas of blending, flaming hues that baffle description. Cities and temples of solid rock rise sheer for thousands of feet, peopled by the ghosts of prehistoric ages. Include a tour of Zion Canyon, Cedar Breaks, and Bryce

Canyon in your itinerary by all means—you cannot afford to miss these major scenic wonders of the world.

CEDAR BREAKS. The Indians call it the “Circle-Of-Painted-Cliffs.” Great broken plateaus in a series of connected semi-circles fall away into chasms of reds, yellows, hazy blues. Along the steep sides, huge rows of jutting red rocks have been eroded to resemble serried battalions of stone giants. Their ranks fade away into purple distance . . . petrified legions of eternity . . .

BRYCE CANYON. Another masterpiece of rainbow-hued sculpture, Bryce Canyon is filled with a fantastic assortment of upstanding rock forms that range in appearance from a likeness of Queen Victoria to a perfectly proportioned cathedral. Castles line the sides, bridges spanning their moats . . . the bows of ships thrust menacingly out of solid rock, and countless other fanciful forms set Bryce Canyon apart from all other National Parks.

ZION NATIONAL PARK. Along the famous Mt. Carmel Highway you reach the painted mountains of Zion Canyon. Through the portals of tunnel windows cut in solid rock one gazes out upon the indescribable beauty of the Mountain of The Sun, the red-streaked Altar of Sacrifice, the brooding silence of the Three Patriarchs . . . Temple of Sinawava . . . Great White Throne . . . a majestic parade of peaks and cliffs that are surpassed only by the mightiness of the Grand Canyon.

BOULDER DAM AT NIGHT

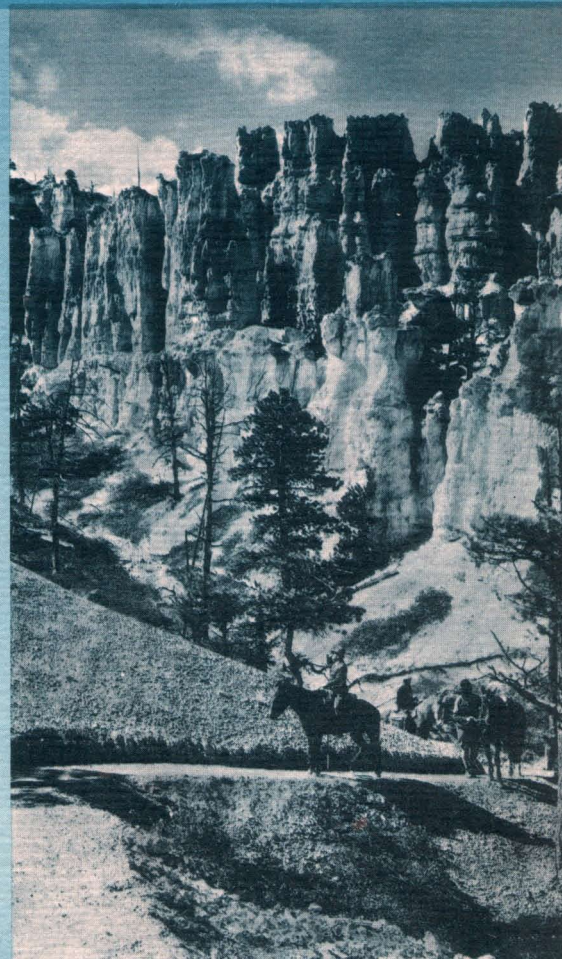


LOOKING INTO ZION CANYON—ZION NATIONAL PARK

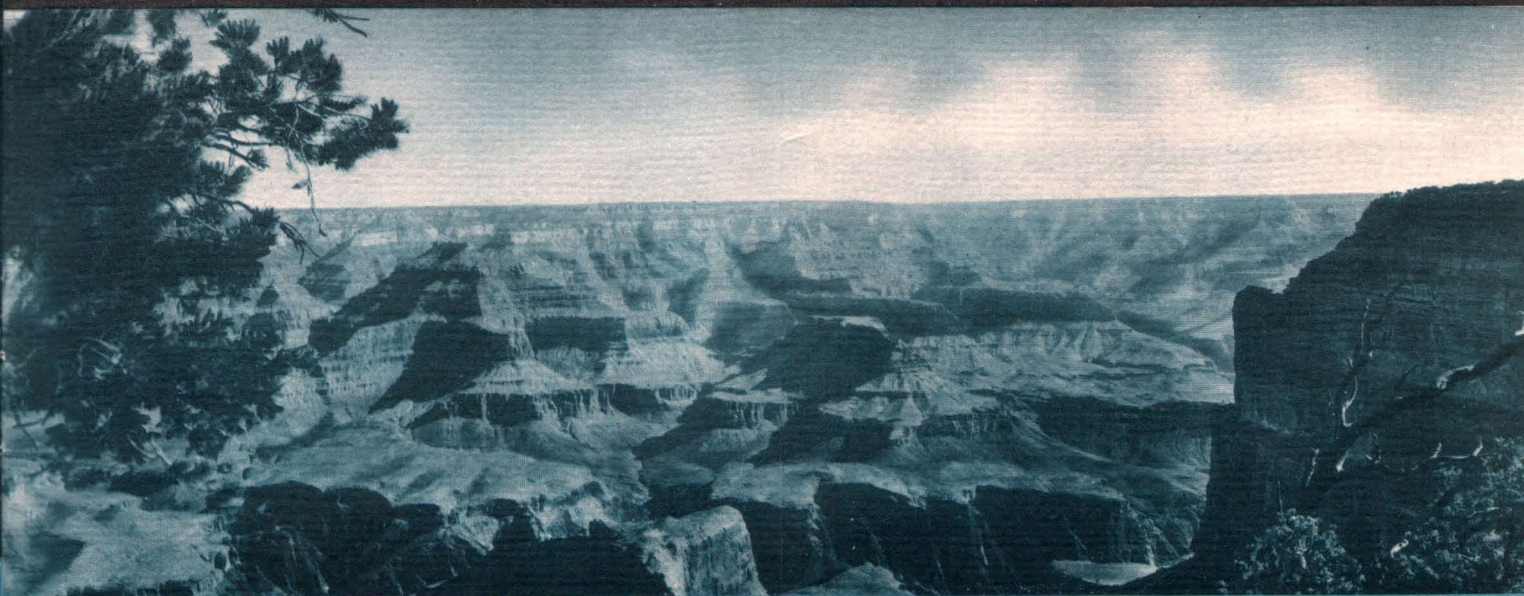
GRAND CANYON, Mightiest of them all. Your visit to the Earth's greatest abyss is an exalting climax to the West's scenic wonders . . . all other spectacles sink to insignificance beside this magnificent chasm of color. The Grand Canyon is included in the National Parks Tour from Cedar City, Utah, by way of Bryce and Zion Canyons. It can be included in your East-West trip at only a slight additional cost. Numerous trails and bridle paths wind along the rim for miles, and a descent into the Canyon's depths with experienced guides may be arranged.

BOULDER DAM. A few miles east of Las Vegas, Nevada, man has challenged the strength of the raging Colorado, age-old chiseler of mighty canyons. At Boulder Dam the greatest engineering feat of modern times is being completed in an irrigation project to "make the desert bloom." A gripping, eyewitness view of this titanic struggle is conveniently had when you make the short side trip by bus.

SALT LAKE CITY. Where western scenic trails meet in the shadow of the rocky Wasatch range lies Salt Lake City . . . this hospitable home of the Mormons is the travel center from whence you may go to all the playgrounds of the West by bus. In a fertile valley near the mouth of the Jordan, the city itself is a fascinating picture of beauty. There's the famous Mormon Tabernacle and Mormon Temple . . . broad avenues lined with towering poplars . . . attractive homes and public buildings . . . all dominated by the gleaming whiteness of the Utah Capitol framed high above the city by Ensign Peak. Nearby is Great Salt Lake. In its exhilarating salt-laden waters you float like a cork. Saltair Beach, famous resort, is located on the eastern shore of this inland sea.



BRYCE CANYON-UTAH



COLORFUL GRAND CANYON OF THE COLORADO



GOLDEN CALIFORNIA

Playground of the Nation

Only one place in the world can offer you such a variety of vacation thrills . . . romantic California! Every degree of climate, sport and pleasure is to be enjoyed in this amazing country. It's snowy Sierras swarm with fish and game. Sea fishing and bathing vie with winter's sports the year round. Its giant Redwood trees, higher than any skyscraper, are the oldest living things in the world. Yachting, golf, polo, racing, mountain climbing and hunting only begin to number the diversions of this golden vacation State. See its cosmopolitan cities, its historic missions, its National Parks . . . by bus.

LOS ANGELES. Don't miss this spirited city of industry and pleasure whose growth has amazed the world. Luxurious theatres, gay cafes, drowsy beaches and Hollywood, capital of make-believe, await you here. Every Southern California Playground is within easy reach.

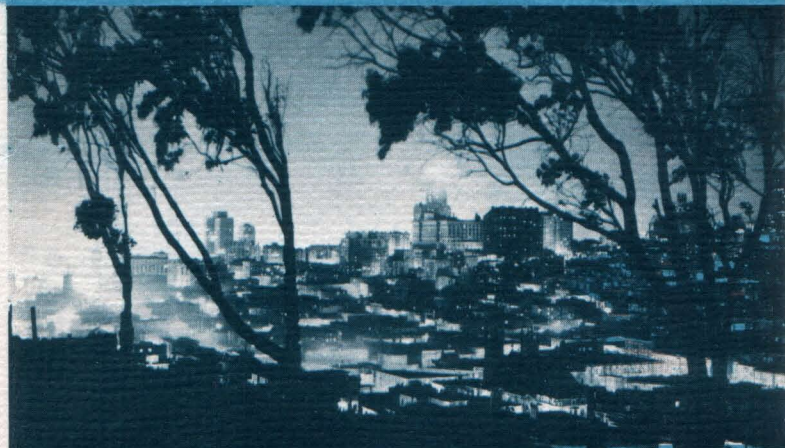
SAN FRANCISCO. Romantic, cosmopolitan San Francisco! Stroll among its busy streets from the quays to the Presidio. Explore the shadows of its famous Chinatown, Fisherman's Wharf, Old Mission Dolores.

BEACHES. White, deep-sanded beaches call you to enjoy the whispering Pacific surf. Along California's shore line is every choice of beach play . . . some are quiet drowsy stretches, palm lined and lonely. Others are gay with bathers and amusement devices.

REDWOOD HIGHWAY. North from San Francisco sweeps the Redwood Empire, unique and spectacular with its mountain ranges, lakes, geysers and streams. And overshadowing all this wealth of beauty stand the towering Redwood monarchs, oldest of living things.

LAKE TAHOE. A favorite summer playground on the eastern slope of the Sierras, where California and Nevada meet. The waters of Tahoe are cool, deep and incredibly blue, surrounded by snow-capped mountains.

YOSEMITE. Sheer granite walls thousands of feet high soar straight to the sky. Down gleaming precipices spectacular waterfalls trace misty silver ribbons. Here you see famous Half Dome . . . El Capitan . . . Bridal Veil Falls . . . and explore vast upper Yosemite.



SAN FRANCISCO BY NIGHT



SOUTHERN CALIFORNIA



INSIDE A MODERN BUS



COMFORTABLE RECLINING SEATS

MAKE YOUR TRAVEL DREAMS COME TRUE

Visit these romantic places while first-class fares are the lowest in all travel history

Now is the opportunity of a life-time to make that long desired trip to scenic America. A trip by bus is far less expensive, more comfortable and enjoyable than ever before. Fares throughout this great travel system are the lowest for first-class travel. Buses are big, roomy and equipped with individual reclining chairs that insure complete travel ease. Broad, clear vision windows on all sides give you excellent close-up views of scenic high spots along your way. Terminals are right down town in every city, most of them in or near a good hotel.

CHARTERED BUS TRIPS

More fun—less cost on group outings

Keep your crowd together on outings, games, conventions and field trips! Charter a special bus—start, stop and return at any time that suits your convenience. Your private chauffeur will be one of that army of seasoned operators whose skill has earned the reputation of being the best drivers on the road. And most important—by going as a unit the cost to each member of your party is greatly reduced—much less than driving private cars or buying individual tickets. Ask your bus agent for rates and information.

Photographs In This Folder Courtesy of

All-Year Club of Southern California
San Diego-California Club
Colorado Springs Chamber of Commerce
Portland Chamber of Commerce

Spokane Chamber of Commerce
Salt Lake City Chamber of Commerce
Californians, Inc.
Redwood Empire Association

GENERAL INFORMATION

Your bus ticket to any part of America may be obtained from authorized agents of Interstate Transit Lines, Union Pacific Stages, or Chicago & North Western Stages. You may go by one route, return another . . . your ticket entitles you to liberal stopovers anywhere, so that you may enjoy places of unusual interest.

Baggage is safely checked or placed in overhead racks. Drivers are carefully chosen men, thoroughly trained in courtesy, and safety principles. Real travel comfort is provided by frequent lunch and rest stops. And best of all, bus fares are much lower than other first-class travel methods, with further savings when you purchase a round trip ticket.

BUS DEPOTS IN PRINCIPAL CITIES

Ames, Iowa—Sheldon Munn Hotel.
Baker, Ore.—1st and Court Sts.
Boise, Idaho—10th and Main Sts.
Cedar Rapids, Iowa—312 So. 3rd St.
Cheyenne, Wyo.—Albany Hotel.
Chicago, Ill.—12 LaSalle St.
Council Bluffs, Iowa—521 W. Broadway
Davenport, Iowa—209 W. 4th St.
Denver, Colo.—1730 Glenarm St.
Des Moines, Iowa—505 Grand Ave.
Grand Island, Nebr.—Union Bus Depot.
Idaho Falls, Idaho—Bus Station.
Kansas City, Kan.—754 Minn. Ave.
Kansas City, Mo.—1301 Main St.
Kearney, Nebr.—Midway Hotel.
La Grande, Ore.—1308 Adams St.
Las Vegas, Nev.—Overland Hotel.
Lawrence, Kans.—638 Massachusetts St.
Lewiston, Idaho—Raymond Hotel.
Lincoln, Nebr.—13th and M Sts.
Long Beach, Calif.—1st and American Sts.
Los Angeles, Calif.—New Rosslyn Hotel, 451 South Main St.

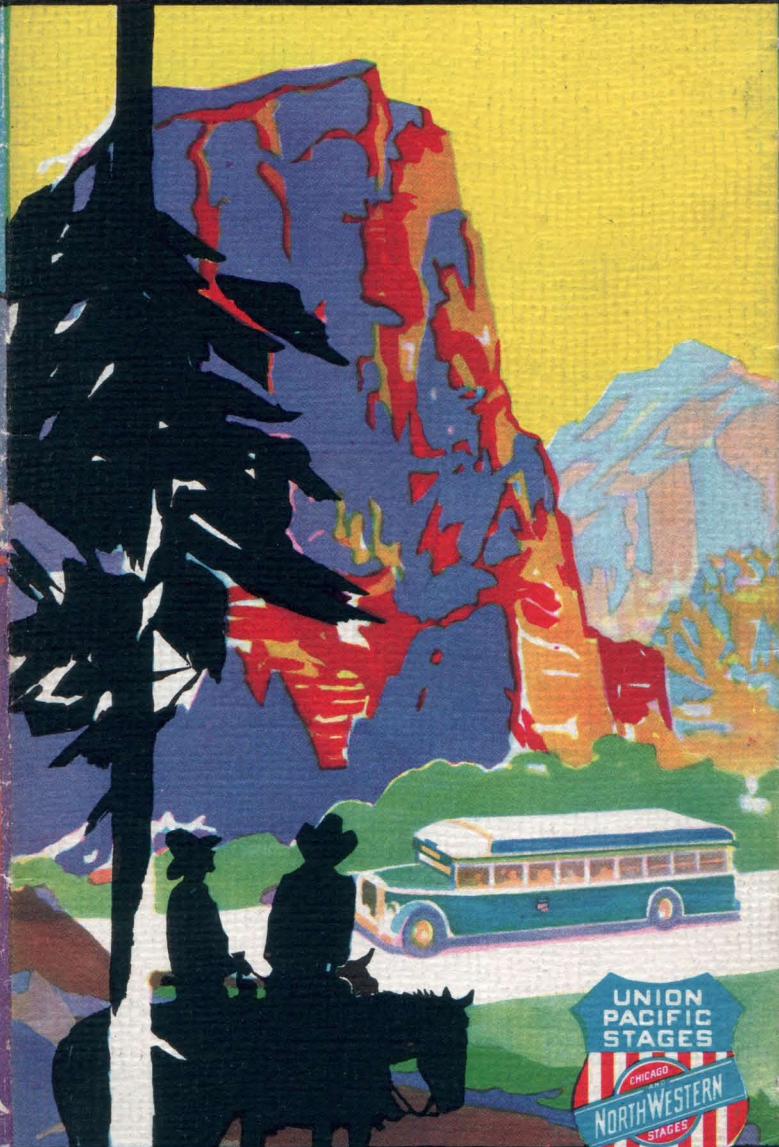
Manhattan, Kans.—Fifth and Poyntz Sts.
Milwaukee, Wis.—Public Service Bldg., 3rd and Michigan Sts.
North Platte, Nebr.—Cody Hotel.
Ogden, Utah—Union Bus Depot.
Omaha, Nebr.—16th and Jackson Sts.
Pendleton, Ore.—500 Main St.
Pocatello, Idaho—218 S. Main
Pomona, Calif.—205 East 2nd St.
Portland, Ore.—352 Yamhill St.
St. Joseph, Mo.—813 Frederick Ave.
Salina, Kans.—Union Bus Depot.
Salt Lake City, Utah—Union Bus Depot, Temple Square Hotel.
San Francisco, Calif.—53-5th St.
Sioux City, Iowa—5th & Douglas.
Sioux Falls, S. D.—234 N. Phillips
Spokane, Wash.—Trent and Howard Sts.
Topeka, Kans.—6th and Jackson Sts.
Twin Falls, Idaho—Union Bus Depot.
Walla Walla, Wash.—1st and Poplar

YOUR TRIP ACROSS
**SCENIC
AMERICA**
• BY BUS •



INTERSTATE TRANSIT LINES

YOUR TRIP ACROSS
**SCENIC
AMERICA**
• BY BUS •



INTERSTATE TRANSIT LINES