



SUN VALLEY, IDAHO—SKIERS' PARADISE, MANTLED WITH FRESH SNOW

UNION PACIFIC RAILROAD COLORPHOTO

*Season's Greetings*

# UNION PACIFIC RAILROAD

## DECEMBER • 1964

SUN	MON	TUES	WED	THUR	FRI	SAT
.	.	1	2	3	4	5
6	7	8	9	10	11	12
13	14	15	16	17	18	19
20	21	22	23	24	25	26
27	28	29	30	31	.	.

*Road of the*



*Domeliners*

1964 NOVEMBER

S	M	T	W	T	F	S
1	2	3	4	5	6	7
8	9	10	11	12	13	14
15	16	17	18	19	20	21
22	23	24	25	26	27	28
29	30					

JANUARY 1965

S	M	T	W	T	F	S
					1	2
3	4	5	6	7	8	9
10	11	12	13	14	15	16
17	18	19	20	21	22	23
24/31	25	26	27	28	29	30



DOMELINER "CITY OF PORTLAND—CITY OF DENVER" IN THE COLUMBIA RIVER GORGE

UNION PACIFIC RAILROAD COLORPHOTO

# UNION PACIFIC RAILROAD

## 1965

JANUARY							FEBRUARY							MARCH												
S	M	T	W	T	F	S	S	M	T	W	T	F	S	S	M	T	W	T	F	S						
					1	2		1	2	3	4	5	6		1	2	3	4	5	6						
3	4	5	6	7	8	9	7	8	9	10	11	12	13	7	8	9	10	11	12	13						
10	11	12	13	14	15	16	14	15	16	17	18	19	20	14	15	16	17	18	19	20						
17	18	19	20	21	22	23	21	22	23	24	25	26	27	21	22	23	24	25	26	27						
24 <sup>31</sup>	25	26	27	28	29	30	28							28	29	30	31									
APRIL							MAY							JUNE												
S	M	T	W	T	F	S	S	M	T	W	T	F	S	S	M	T	W	T	F	S						
				1	2	3							1								1	2	3	4	5	
4	5	6	7	8	9	10	2	3	4	5	6	7	8	6	7	8	9	10	11	12						
11	12	13	14	15	16	17	9	10	11	12	13	14	15	13	14	15	16	17	18	19						
18	19	20	21	22	23	24	16	17	18	19	20	21	22	20	21	22	23	24	25	26						
25	26	27	28	29	30		23 <sup>30</sup>	24 <sup>31</sup>	25	26	27	28	29	27	28	29	30									
JULY							AUGUST							SEPTEMBER												
S	M	T	W	T	F	S	S	M	T	W	T	F	S	S	M	T	W	T	F	S						
				1	2	3	1	2	3	4	5	6	7					1	2	3	4					
4	5	6	7	8	9	10	8	9	10	11	12	13	14	5	6	7	8	9	10	11						
11	12	13	14	15	16	17	15	16	17	18	19	20	21	12	13	14	15	16	17	18						
18	19	20	21	22	23	24	22	23	24	25	26	27	28	19	20	21	22	23	24	25						
25	26	27	28	29	30	31	29	30	31					26	27	28	29	30								
OCTOBER							NOVEMBER							DECEMBER												
S	M	T	W	T	F	S	S	M	T	W	T	F	S	S	M	T	W	T	F	S						
					1	2							1	2	3	4							1	2	3	4
3	4	5	6	7	8	9	7	8	9	10	11	12	13	5	6	7	8	9	10	11						
10	11	12	13	14	15	16	14	15	16	17	18	19	20	12	13	14	15	16	17	18						
17	18	19	20	21	22	23	21	22	23	24	25	26	27	19	20	21	22	23	24	25						
24 <sup>31</sup>	25	26	27	28	29	30	28	29	30					26	27	28	29	30	31							



BEAUTIFUL GARDENS AND THE SPARKLING PACIFIC AT LAGUNA BEACH, CALIFORNIA

UNION PACIFIC RAILROAD COLORPHOTO

# UNION PACIFIC RAILROAD

## JANUARY • 1965

SUN	MON	TUES	WED	THUR	FRI	SAT
.	.	.	.	.	1	2
3	4	5	6	7	8	9
10	11	12	13	14	15	16
17	18	19	20	21	22	23
24/31	25	26	27	28	29	30

*Road of the*



*Domeliners*

1964 DECEMBER

S	M	T	W	T	F	S
		1	2	3	4	5
6	7	8	9	10	11	12
13	14	15	16	17	18	19
20	21	22	23	24	25	26
27	28	29	30	31		

FEBRUARY 1965

S	M	T	W	T	F	S
	1	2	3	4	5	6
7	8	9	10	11	12	13
14	15	16	17	18	19	20
21	22	23	24	25	26	27
28						



LOOKING ACROSS THE GOLDEN GATE, SAN FRANCISCO, CALIFORNIA

UNION PACIFIC RAILROAD COLORPHOTO

# UNION PACIFIC RAILROAD

**FEBRUARY • 1965**

SUN	MON	TUES	WED	THUR	FRI	SAT
.	1	2	3	4	5	6
7	8	9	10	11	12	13
14	15	16	17	18	19	20
21	22	23	24	25	26	27
28	.	.	.	.	.	.

*Road of the*



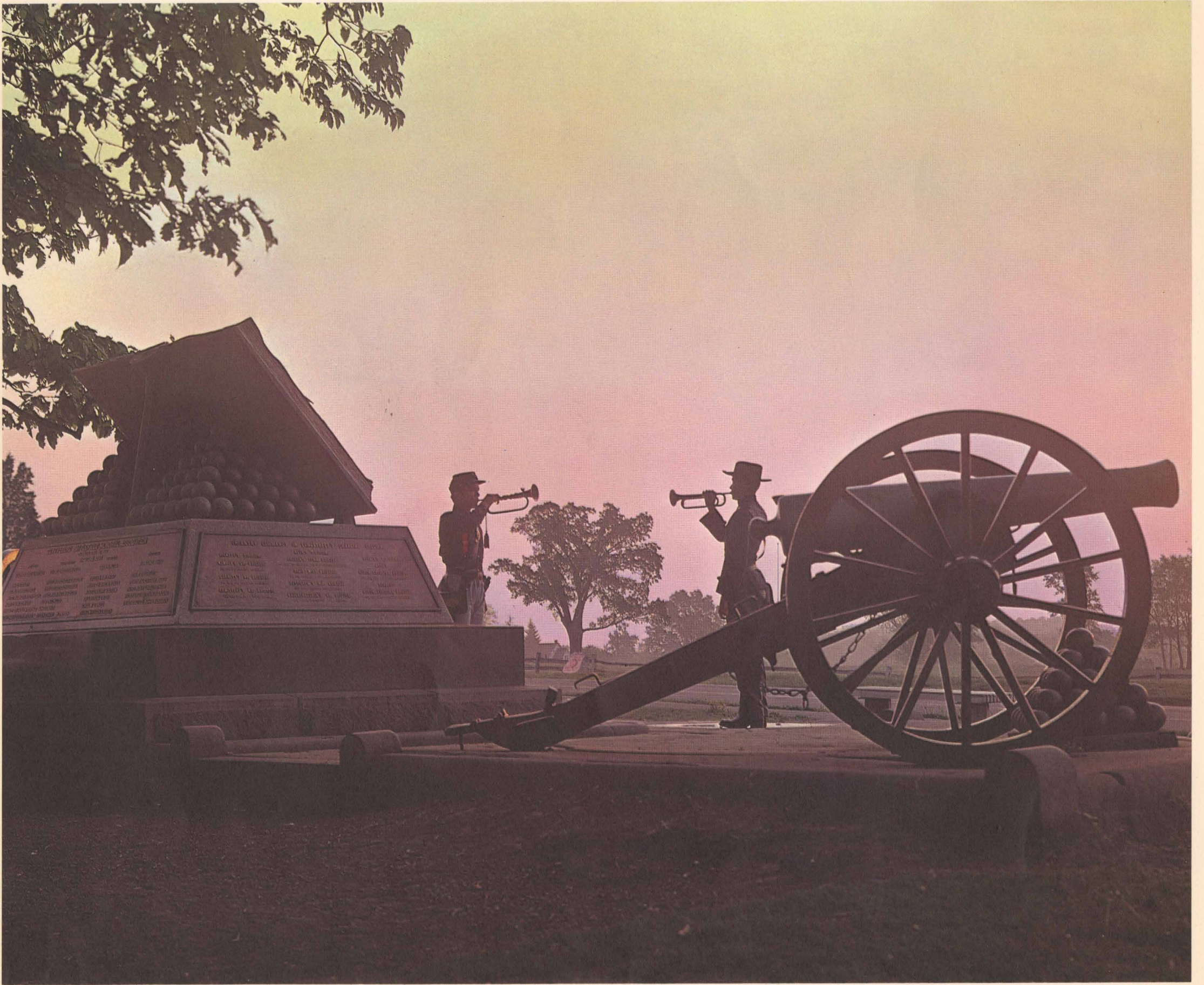
*Domeliners*

JANUARY

S	M	T	W	T	F	S
					1	2
3	4	5	6	7	8	9
10	11	12	13	14	15	16
17	18	19	20	21	22	23
24/31	25	26	27	28	29	30

MARCH

S	M	T	W	T	F	S
	1	2	3	4	5	6
7	8	9	10	11	12	13
14	15	16	17	18	19	20
21	22	23	24	25	26	27
28	29	30	31			



"TAPS", CIVIL WAR MEMORIAL, GETTYSBURG BATTLEFIELD

UNION PACIFIC RAILROAD COLORPHOTO

# UNION PACIFIC RAILROAD

**MARCH • 1965**

SUN	MON	TUES	WED	THUR	FRI	SAT
.	1	2	3	4	5	6
7	8	9	10	11	12	13
14	15	16	17	18	19	20
21	22	23	24	25	26	27
28	29	30	31	.	.	.

*Road of the*



*Domeliners*

FEBRUARY

S	M	T	W	T	F	S
	1	2	3	4	5	6
7	8	9	10	11	12	13
14	15	16	17	18	19	20
21	22	23	24	25	26	27
28						

APRIL

S	M	T	W	T	F	S
				1	2	3
4	5	6	7	8	9	10
11	12	13	14	15	16	17
18	19	20	21	22	23	24
25	26	27	28	29	30	



POTATOES GROWING IN IDAHO'S RICH RED SOIL, TETON MOUNTAINS IN DISTANCE

UNION PACIFIC RAILROAD COLORPHOTO

# UNION PACIFIC RAILROAD

**APRIL • 1965**

SUN	MON	TUES	WED	THUR	FRI	SAT
.	.	.	.	1	2	3
4	5	6	7	8	9	10
11	12	13	14	15	16	17
18	19	20	21	22	23	24
25	26	27	28	29	30	.

*Road of the*



*Domeliners*

MARCH

S	M	T	W	T	F	S
	1	2	3	4	5	6
7	8	9	10	11	12	13
14	15	16	17	18	19	20
21	22	23	24	25	26	27
28	29	30	31			

MAY

S	M	T	W	T	F	S
						1
2	3	4	5	6	7	8
9	10	11	12	13	14	15
16	17	18	19	20	21	22
<sup>23</sup> / <sub>30</sub>	<sup>24</sup> / <sub>31</sub>	25	26	27	28	29



OLYMPIC MOUNTAINS, OLYMPIC NATIONAL PARK, NORTHWEST WASHINGTON

UNION PACIFIC RAILROAD COLORPHOTO

# UNION PACIFIC RAILROAD

**MAY • 1965**

SUN	MON	TUES	WED	THUR	FRI	SAT
.	.	.	.	.	.	1
2	3	4	5	6	7	8
9	10	11	12	13	14	15
16	17	18	19	20	21	22
23/30	24/31	25	26	27	28	29

*Road of the*



*Domeliners*

APRIL

S	M	T	W	T	F	S
				1	2	3
4	5	6	7	8	9	10
11	12	13	14	15	16	17
18	19	20	21	22	23	24
25	26	27	28	29	30	

JUNE

S	M	T	W	T	F	S
		1	2	3	4	5
6	7	8	9	10	11	12
13	14	15	16	17	18	19
20	21	22	23	24	25	26
27	28	29	30			



WARM SUN AND CRISP AIR MAKE FOR PERFECT GOLFING AT SUN VALLEY, IDAHO

UNION PACIFIC RAILROAD COLORPHOTO

# UNION PACIFIC RAILROAD

**JUNE • 1965**

SUN	MON	TUES	WED	THUR	FRI	SAT
.	.	1	2	3	4	5
6	7	8	9	10	11	12
13	14	15	16	17	18	19
20	21	22	23	24	25	26
27	28	29	30	.	.	.

*Road of the*



*Domeliners*

MAY

S	M	T	W	T	F	S
						1
2	3	4	5	6	7	8
9	10	11	12	13	14	15
16	17	18	19	20	21	22
<sup>23</sup> / <sub>30</sub>	<sup>24</sup> / <sub>31</sub>	25	26	27	28	29

JULY

S	M	T	W	T	F	S
				1	2	3
4	5	6	7	8	9	10
11	12	13	14	15	16	17
18	19	20	21	22	23	24
25	26	27	28	29	30	31





THIS MONTH MARKS DISNEYLAND'S FIRST DECADE

UNION PACIFIC RAILROAD COLORPHOTO

# UNION PACIFIC RAILROAD

**JULY • 1965**

SUN	MON	TUES	WED	THUR	FRI	SAT
.	.	.	.	1	2	3
4	5	6	7	8	9	10
11	12	13	14	15	16	17
18	19	20	21	22	23	24
25	26	27	28	29	30	31

*Road of the*



*Domeliners*

JUNE

S	M	T	W	T	F	S
		1	2	3	4	5
6	7	8	9	10	11	12
13	14	15	16	17	18	19
20	21	22	23	24	25	26
27	28	29	30			

AUGUST

S	M	T	W	T	F	S
1	2	3	4	5	6	7
8	9	10	11	12	13	14
15	16	17	18	19	20	21
22	23	24	25	26	27	28
29	30	31				



COLTER BAY, JACKSON LAKE, GRAND TETON NATIONAL PARK, WYOMING

UNION PACIFIC RAILROAD COLORPHOTO

# UNION PACIFIC RAILROAD

**AUGUST • 1965**

SUN	MON	TUES	WED	THUR	FRI	SAT
1	2	3	4	5	6	7
8	9	10	11	12	13	14
15	16	17	18	19	20	21
22	23	24	25	26	27	28
29	30	31	.	.	.	.

*Road of the*



*Domeliners*

JULY

S	M	T	W	T	F	S
				1	2	3
4	5	6	7	8	9	10
11	12	13	14	15	16	17
18	19	20	21	22	23	24
25	26	27	28	29	30	31

SEPTEMBER

S	M	T	W	T	F	S
				1	2	3
4	5	6	7	8	9	10
11	12	13	14	15	16	17
18	19	20	21	22	23	24
25	26	27	28	29	30	



THE WHITE HOUSE, WASHINGTON MONUMENT AND THOMAS JEFFERSON MEMORIAL, WASHINGTON, D. C. UNION PACIFIC RAILROAD COLORPHOTO

# UNION PACIFIC RAILROAD

## SEPTEMBER • 1965

SUN	MON	TUES	WED	THUR	FRI	SAT
.	.	.	1	2	3	4
5	6	7	8	9	10	11
12	13	14	15	16	17	18
19	20	21	22	23	24	25
26	27	28	29	30	.	.

*Road of the*



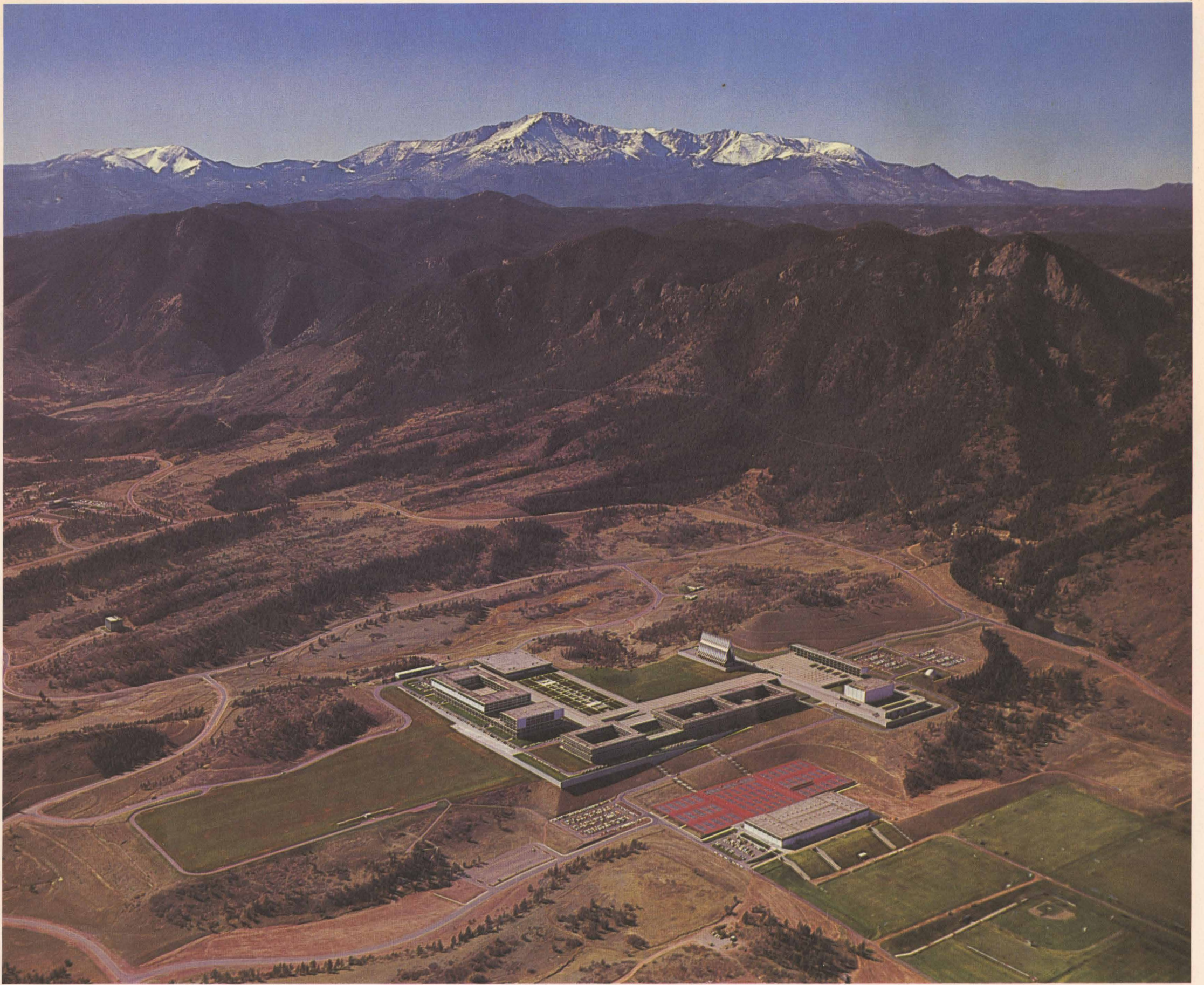
*Domeliners*

### AUGUST

S	M	T	W	T	F	S
1	2	3	4	5	6	7
8	9	10	11	12	13	14
15	16	17	18	19	20	21
22	23	24	25	26	27	28
29	30	31				

### OCTOBER

S	M	T	W	T	F	S
					1	2
3	4	5	6	7	8	9
10	11	12	13	14	15	16
17	18	19	20	21	22	23
24/31	25	26	27	28	29	30



THE U. S. AIR FORCE ACADEMY AND PIKES PEAK, NEAR COLORADO SPRINGS, COLORADO

STEWART'S COMMERCIAL PHOTOGRAPHERS

# UNION PACIFIC RAILROAD

## OCTOBER • 1965

SUN	MON	TUES	WED	THUR	FRI	SAT
.	.	.	.	.	1	2
3	4	5	6	7	8	9
10	11	12	13	14	15	16
17	18	19	20	21	22	23
<sup>24</sup> / <sub>31</sub>	25	26	27	28	29	30

*Road of the*



*Domeliners*

SEPTEMBER

S	M	T	W	T	F	S
			1	2	3	4
5	6	7	8	9	10	11
12	13	14	15	16	17	18
19	20	21	22	23	24	25
26	27	28	29	30		

NOVEMBER

S	M	T	W	T	F	S
	1	2	3	4	5	6
7	8	9	10	11	12	13
14	15	16	17	18	19	20
21	22	23	24	25	26	27
28	29	30				



RED CANYON OVERLOOK ABOVE FLAMING GORGE LAKE, NORTHEASTERN UTAH

UNION PACIFIC RAILROAD COLORPHOTO

# UNION PACIFIC RAILROAD

## NOVEMBER • 1965

SUN	MON	TUES	WED	THUR	FRI	SAT
.	1	2	3	4	5	6
7	8	9	10	11	12	13
14	15	16	17	18	19	20
21	22	23	24	25	26	27
28	29	30	.	.	.	.

Road of the



Domeliners

### OCTOBER

S	M	T	W	T	F	S
					1	2
3	4	5	6	7	8	9
10	11	12	13	14	15	16
17	18	19	20	21	22	23
24/31	25	26	27	28	29	30

### DECEMBER

S	M	T	W	T	F	S
			1	2	3	4
5	6	7	8	9	10	11
12	13	14	15	16	17	18
19	20	21	22	23	24	25
26	27	28	29	30	31	



SUN VALLEY, IDAHO BECKONS SKIERS FROM NOVICE TO OLYMPIC COMPETITOR

UNION PACIFIC RAILROAD COLORPHOTO

# UNION PACIFIC RAILROAD

## DECEMBER • 1965

SUN	MON	TUES	WED	THUR	FRI	SAT
.	.	.	1	2	3	4
5	6	7	8	9	10	11
12	13	14	15	16	17	18
19	20	21	22	23	24	25
26	27	28	29	30	31	.

Road of the



Domeliners

### 1965 NOVEMBER

S	M	T	W	T	F	S
	1	2	3	4	5	6
7	8	9	10	11	12	13
14	15	16	17	18	19	20
21	22	23	24	25	26	27
28	29	30				

### JANUARY 1966

S	M	T	W	T	F	S
						1
2	3	4	5	6	7	8
9	10	11	12	13	14	15
16	17	18	19	20	21	22
23 <sup>30</sup>	24 <sup>31</sup>	25	26	27	28	29



UNION PACIFIC FREIGHT WINDS THROUGH THE BEAUTIFUL COLUMBIA RIVER GORGE

UNION PACIFIC RAILROAD COLORPHOTO

# UNION PACIFIC RAILROAD

## 1966

JANUARY							FEBRUARY							MARCH						
S	M	T	W	T	F	S	S	M	T	W	T	F	S	S	M	T	W	T	F	S
						1			1	2	3	4	5			1	2	3	4	5
2	3	4	5	6	7	8	6	7	8	9	10	11	12	6	7	8	9	10	11	12
9	10	11	12	13	14	15	13	14	15	16	17	18	19	13	14	15	16	17	18	19
16	17	18	19	20	21	22	20	21	22	23	24	25	26	20	21	22	23	24	25	26
<sup>23</sup> / <sub>30</sub>	<sup>24</sup> / <sub>31</sub>	25	26	27	28	29	27	28						27	28	29	30	31		
APRIL							MAY							JUNE						
S	M	T	W	T	F	S	S	M	T	W	T	F	S	S	M	T	W	T	F	S
					1	2	1	2	3	4	5	6	7				1	2	3	4
3	4	5	6	7	8	9	8	9	10	11	12	13	14	5	6	7	8	9	10	11
10	11	12	13	14	15	16	15	16	17	18	19	20	21	12	13	14	15	16	17	18
17	18	19	20	21	22	23	22	23	24	25	26	27	28	19	20	21	22	23	24	25
24	25	26	27	28	29	30	29	30	31					26	27	28	29	30		
JULY							AUGUST							SEPTEMBER						
S	M	T	W	T	F	S	S	M	T	W	T	F	S	S	M	T	W	T	F	S
					1	2		1	2	3	4	5	6					1	2	3
3	4	5	6	7	8	9	7	8	9	10	11	12	13	4	5	6	7	8	9	10
10	11	12	13	14	15	16	14	15	16	17	18	19	20	11	12	13	14	15	16	17
17	18	19	20	21	22	23	21	22	23	24	25	26	27	18	19	20	21	22	23	24
<sup>24</sup> / <sub>31</sub>	25	26	27	28	29	30	28	29	30	31				25	26	27	28	29	30	
OCTOBER							NOVEMBER							DECEMBER						
S	M	T	W	T	F	S	S	M	T	W	T	F	S	S	M	T	W	T	F	S
						1			1	2	3	4	5					1	2	3
2	3	4	5	6	7	8	6	7	8	9	10	11	12	4	5	6	7	8	9	10
9	10	11	12	13	14	15	13	14	15	16	17	18	19	11	12	13	14	15	16	17
16	17	18	19	20	21	22	20	21	22	23	24	25	26	18	19	20	21	22	23	24
<sup>23</sup> / <sub>30</sub>	<sup>24</sup> / <sub>31</sub>	25	26	27	28	29	27	28	29	30				25	26	27	28	29	30	31



HEADQUARTERS BUILDING OF THE UNION PACIFIC RAILROAD, OMAHA, NEBRASKA

UNION PACIFIC RAILROAD COLORPHOTO

# UNION PACIFIC RAILROAD

*Road of the Domeliners*



## Union Pacific Traffic Offices

### Plan Your Trip or Shipment With Expert Help

Let one of Union Pacific's courteous and informed representatives assist you with the details of your business or vacation trip . . . or with any shipping problem. There is no charge and you will find his cooperation most helpful. Write, phone or call at one of the Union Pacific offices listed below.

Aberdeen, Wash. 98520	3 Union Psgr. Station, K and River Sts.
Alhambra, Calif. 91801	City Ticket Office, 51 South Garfield Ave.
Atlanta, Ga. 30303	705 Fulton National Bank Bldg.
Bend, Ore. 97701	1054 Bond St.
Beverly Hills, Calif. 90210	251 North Beverly Drive
Birmingham, Ala. 35203	701 Brown-Marx Bldg.
Boise, Idaho 83702	City Ticket Office, Idaho Bldg., 212 North 8th St.
Boston, Mass. 02108	208 Old South Bldg., 294 Washington St.
Butte, Mont. 59701	609 Metals Bank Bldg., 8 West Park St.
Calgary, Alberta	Room 717, Lancaster Bldg., 2d St. & 8th Ave. West
Cheyenne, Wyo. 82001	Union Pacific Station, 121 West 15th St.
Chicago, Ill. 60603	City Ticket Office, One South La Salle St.
Cincinnati, Ohio 45202	303 Dixie Terminal Bldg., 4th & Walnut St.
Cleveland, Ohio 44113	1407 Terminal Tower, 50 Public Square
Council Bluffs, Iowa 51502	Union Pacific Transfer Depot
Dallas, Texas 75201	2108 Mercantile Bank Bldg.
Denver, Colo. 80202	City Ticket Office, 535 Seventeenth St.
Des Moines, Iowa 50309	407 Equitable Bldg., Sixth and Locust Sts.
Detroit, Mich. 48226	612 Book Bldg., 1249 Washington Blvd.
East Los Angeles, Calif. 90022	5454 Ferguson Dr.
Eugene, Ore. 97401	Suite 21, Cascade Bldg., 163 East 12th Ave.
Fresno, Calif. 93714	207 Rowell Bldg., Tulare St. & Van Ness Ave.
Glendale, Calif. 91203	City Ticket Office, 406 North Brand Blvd.
Hollywood, Calif. 90028	City Ticket Office, 6702 Hollywood Blvd.
Huntington Park, Calif. 90256	City Ticket Office, 7002 Pacific Blvd.
Kansas City, Mo. 64106	City Ticket Office, 2 East 11th St.
Las Vegas, Nev. 89101	Union Pacific Passenger Station
Lewiston, Idaho 83501	Room 7, Union Depot
Lincoln, Nebr. 68508	City Ticket Office, 224 South 13th St.
Long Beach, Calif. 90802	221 Long Beach Blvd.
Longview, Wash. 98632	City Ticket Office, 1453 Broadway
Los Angeles, Calif. 90014	City Ticket Office, 434 W. 6th St.
Medford, Ore. 97501	1307 West Main St.
Memphis, Tenn. 38103	1137 Sterick Bldg., 8 North Third St.
Milwaukee, Wis. 53203	902 Majestic Bldg., 231 West Wisconsin Ave.
Minneapolis, Minn. 55402	890 Northwestern Bank Bldg., 620 Marquette Ave.
New Orleans, La. 70112	504 Nat'l Bank of Commerce Bldg., 210 Baronne St.
New York, N. Y. 10020	626 5th Ave., Suite 350, Rockefeller Center
Oakland, Calif. 94612	214 Central Bldg., 436 Fourteenth St.
Ogden, Utah 84401	Room 100, Union Station
Omaha, Nebr. 68102	City Ticket Office, Union Pacific Bldg., 15th & Dodge Sts.
Orange, Calif. 92668	418 Benson Bldg., 705 Douglas St.
Spokane, Wash. 99201	Union Station, West 430 Trent Ave.
Stockton, Calif. 95202	206 California Bldg., 11 South San Joaquin St.
Tacoma, Wash. 98402	City Ticket Office, 114 South Ninth St.
Topeka, Kans. 66608	Union Pacific Freight Station
Toronto, Ontario	1304 National Trust Bldg., 7 King St. East
Tulsa, Okla. 74103	721 Kennedy Bldg., 321 South Boston St.
Vancouver, B. C.	315 Burrard Bldg., 1030 W. Georgia St.
Walla Walla, Wash. 99362	Union Pacific Psgr. Station, 13th & West Main Sts.
Washington, D. C. 20006	814 The Farragut Bldg.
Winston-Salem, N. C. 27101	625 Reynolds Bldg., 4th & Main Sts.
Yakima, Wash. 98902	Union Pacific Bldg., 104 West Yakima Ave.

## THE UNION PACIFIC WEST...A FOUR-SEASON VACATIONLAND

The Union Pacific serves more Western Wonderlands and National Parks than any other railroad . . . as this map shows. Here in the historic and romantic West you will find innumerable answers to your vacation desires . . . unlimited resort facilities from the Rocky Mountains to the Pacific Ocean, from border to border . . . gay metropolitan cities as well as historic places. Whatever the season you'll find your favorite sport, recreation or just relaxed sightseeing available.

If you live in the West you can, of course, enjoy equally fine service to and from the East via Union Pacific. It is easy to visit any of these scenic regions when you make a business or vacation trip East.

Consider the comfort and safety of travel by train which provides many services and conveniences that other modes of travel simply do not offer. You ride in the perfect comfort of modern air conditioned cars. You need not be concerned with the weather . . . you're safe from the elements . . . warm in winter and cool in summer.

Through the wide, glare-proof windows of the Dome cars an interesting ever-changing panorama passes in review. Up ahead

the engineer does the driving so you have no traffic worries — just carefree relaxation all-the-way. When it comes time to dine — you can eat just about when and what you wish, and it is tasty, appetizing food, prepared by skilled chefs and courteously served in well-appointed dining cars.

When you travel to and from the West treat yourself and family to the finest in train service . . . Union Pacific Domeliners: "City of Los Angeles" and "The Challenger" between Chicago, Omaha, Salt Lake City and Los Angeles; the "City of San Francisco" between Chicago, Omaha and San Francisco; the "City of Portland" between Chicago, Denver and Portland (Tacoma-Seattle); and the "City of St. Louis" between St. Louis, Kansas City, Denver and Los Angeles or San Francisco.

### DEPENDABLE FREIGHT SERVICE

The Union Pacific is a great transcontinental rail thoroughfare to and from the West. Its freight service for the nation's shippers, domestic as well as import-export freight, is unsurpassed. Around the clock, over smooth rails under electronic control, great trains of freight are moving the products of farm or factory, forest or mines, to enrich the economic well-being of the nation.