

Season's Greetings*



A "CHRISTMAS CARD" VIEW OF CHALLENGER INN, SUN VALLEY, IDAHO

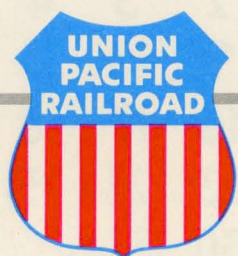
UNION PACIFIC RAILROAD COLORPHOTO

UNION PACIFIC RAILROAD

ROAD OF THE DAILY *Domeliners* AND *Streamliners*

DECEMBER • 1959

SUN	MON	TUES	WED	THUR	FRI	SAT
.	.	1	2	3	4	5
6	7	8	9	10	11	12
13	14	15	16	17	18	19
20	21	22	23	24	25	26
27	28	29	30	31	.	.



1959

NOVEMBER

JANUARY

1960

S	M	T	W	T	F	S
1	2	3	4	5	6	7
8	9	10	11	12	13	14
15	16	17	18	19	20	21
22	23	24	25	26	27	28
29	30					

S	M	T	W	T	F	S
					1	2
3	4	5	6	7	8	9
10	11	12	13	14	15	16
17	18	19	20	21	22	23
24/31	25	26	27	28	29	30



THE DOMELINER "CITY OF ST. LOUIS" IN SCENIC CAJON PASS, CALIFORNIA

UNION PACIFIC RAILROAD COLORPHOTO

UNION PACIFIC RAILROAD

ROAD OF THE DAILY *Domeliners* AND *Streamliners*

1960

JANUARY							FEBRUARY							MARCH						
S	M	T	W	T	F	S	S	M	T	W	T	F	S	S	M	T	W	T	F	S
					1	2		1	2	3	4	5	6			1	2	3	4	5
3	4	5	6	7	8	9	7	8	9	10	11	12	13	6	7	8	9	10	11	12
10	11	12	13	14	15	16	14	15	16	17	18	19	20	13	14	15	16	17	18	19
17	18	19	20	21	22	23	21	22	23	24	25	26	27	20	21	22	23	24	25	26
²⁴ / ₃₁	25	26	27	28	29	30	28	29						27	28	29	30	31		
APRIL							MAY							JUNE						
S	M	T	W	T	F	S	S	M	T	W	T	F	S	S	M	T	W	T	F	S
					1	2	1	2	3	4	5	6	7			1	2	3	4	
3	4	5	6	7	8	9	8	9	10	11	12	13	14	5	6	7	8	9	10	11
10	11	12	13	14	15	16	15	16	17	18	19	20	21	12	13	14	15	16	17	18
17	18	19	20	21	22	23	22	23	24	25	26	27	28	19	20	21	22	23	24	25
24	25	26	27	28	29	30	29	30	31					26	27	28	29	30		
JULY							AUGUST							SEPTEMBER						
S	M	T	W	T	F	S	S	M	T	W	T	F	S	S	M	T	W	T	F	S
					1	2		1	2	3	4	5	6					1	2	3
3	4	5	6	7	8	9	7	8	9	10	11	12	13	4	5	6	7	8	9	10
10	11	12	13	14	15	16	14	15	16	17	18	19	20	11	12	13	14	15	16	17
17	18	19	20	21	22	23	21	22	23	24	25	26	27	18	19	20	21	22	23	24
²⁴ / ₃₁	25	26	27	28	29	30	28	29	30	31				25	26	27	28	29	30	
OCTOBER							NOVEMBER							DECEMBER						
S	M	T	W	T	F	S	S	M	T	W	T	F	S	S	M	T	W	T	F	S
						1			1	2	3	4	5					1	2	3
2	3	4	5	6	7	8	6	7	8	9	10	11	12	4	5	6	7	8	9	10
9	10	11	12	13	14	15	13	14	15	16	17	18	19	11	12	13	14	15	16	17
16	17	18	19	20	21	22	20	21	22	23	24	25	26	18	19	20	21	22	23	24
²³ / ₃₀	²⁴ / ₃₁	25	26	27	28	29	27	28	29	30				25	26	27	28	29	30	31



CALIFORNIA AND POWELL STREET CABLE CARS SERVE SAN FRANCISCO'S FAMOUS NOB HILL

MOULIN STUDIO COLORPHOTO

UNION PACIFIC RAILROAD

ROAD OF THE DAILY *Domeliners* AND *Streamliners*

JANUARY • 1960

SUN	MON	TUES	WED	THUR	FRI	SAT
.	1	2
3	4	5	6	7	8	9
10	11	12	13	14	15	16
17	18	19	20	21	22	23
24/31	25	26	27	28	29	30



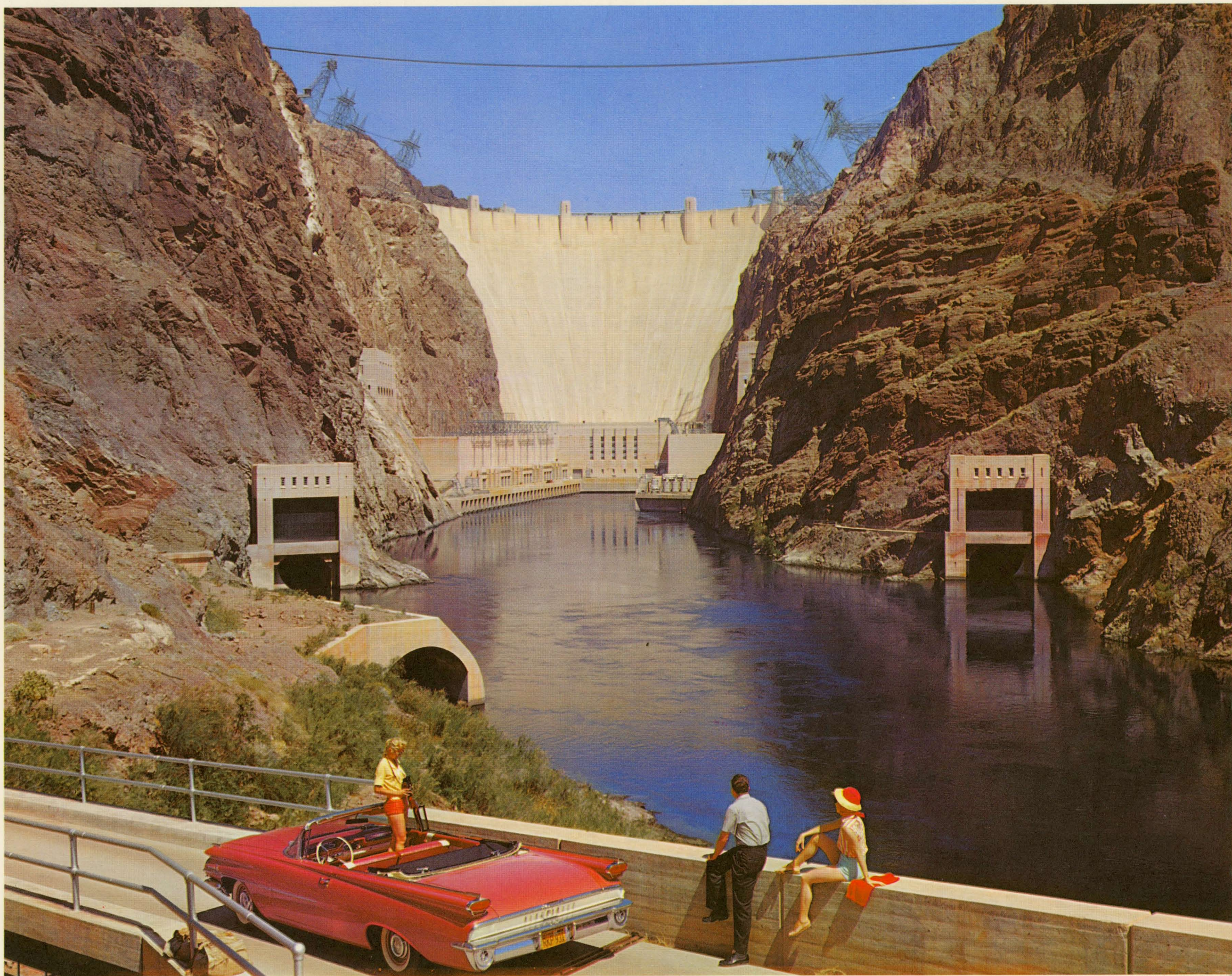
1959

DECEMBER

FEBRUARY

1960

S	M	T	W	T	F	S	S	M	T	W	T	F	S
		1	2	3	4	5		1	2	3	4	5	6
6	7	8	9	10	11	12	7	8	9	10	11	12	13
13	14	15	16	17	18	19	14	15	16	17	18	19	20
20	21	22	23	24	25	26	21	22	23	24	25	26	27
27	28	29	30	31			28	29					



THE DOWNSTREAM FACE OF HOOVER DAM, NEAR EXCITING LAS VEGAS, NEVADA

UNION PACIFIC RAILROAD COLORPHOTO

UNION PACIFIC RAILROAD

ROAD OF THE DAILY *Domeliners* AND *Streamliners*

FEBRUARY • 1960

SUN	MON	TUES	WED	THUR	FRI	SAT
.	1	2	3	4	5	6
7	8	9	10	11	12	13
14	15	16	17	18	19	20
21	22	23	24	25	26	27
28	29



1960

JANUARY

S	M	T	W	T	F	S
.	1	2
3	4	5	6	7	8	9
10	11	12	13	14	15	16
17	18	19	20	21	22	23
24/31	25	26	27	28	29	30

MARCH

1960

S	M	T	W	T	F	S
.	.	1	2	3	4	5
6	7	8	9	10	11	12
13	14	15	16	17	18	19
20	21	22	23	24	25	26
27	28	29	30	31	.	.



GREAT WHITE THRONE FROM TEMPLE OF SINAWAVA, ZION NATIONAL PARK, UTAH

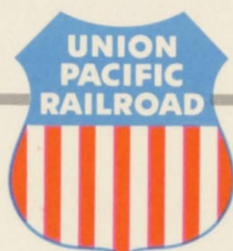
UNION PACIFIC RAILROAD COLORPHOTO

UNION PACIFIC RAILROAD

ROAD OF THE DAILY *Domeliners* AND *Streamliners*

MARCH • 1960

SUN	MON	TUES	WED	THUR	FRI	SAT
.	.	1	2	3	4	5
6	7	8	9	10	11	12
13	14	15	16	17	18	19
20	21	22	23	24	25	26
27	28	29	30	31	.	.



1960

FEBRUARY

S	M	T	W	T	F	S
	1	2	3	4	5	6
7	8	9	10	11	12	13
14	15	16	17	18	19	20
21	22	23	24	25	26	27
28	29					

APRIL

1960

S	M	T	W	T	F	S
					1	2
3	4	5	6	7	8	9
10	11	12	13	14	15	16
17	18	19	20	21	22	23
24	25	26	27	28	29	30



LONGS PEAK AND BEAR LAKE, ROCKY MOUNTAIN NATIONAL PARK, COLORADO

UNION PACIFIC RAILROAD COLORPHOTO

UNION PACIFIC RAILROAD

ROAD OF THE DAILY *Domeliners* AND *Streamliners*

APRIL • 1960

SUN	MON	TUES	WED	THUR	FRI	SAT
.	1	2
3	4	5	6	7	8	9
10	11	12	13	14	15	16
17	18	19	20	21	22	23
24	25	26	27	28	29	30



1960

MARCH

MAY

1960

S	M	T	W	T	F	S
		1	2	3	4	5
6	7	8	9	10	11	12
13	14	15	16	17	18	19
20	21	22	23	24	25	26
27	28	29	30	31		

S	M	T	W	T	F	S
1	2	3	4	5	6	7
8	9	10	11	12	13	14
15	16	17	18	19	20	21
22	23	24	25	26	27	28
29	30	31				



THE BREATH-TAKING LOWER FALL IN YELLOWSTONE NATIONAL PARK, WYOMING

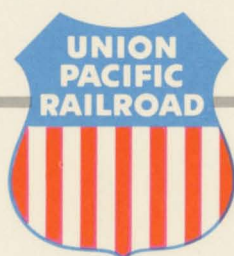
UNION PACIFIC RAILROAD COLORPHOTO

UNION PACIFIC RAILROAD

ROAD OF THE DAILY *Domeliners* AND *Streamliners*

MAY • 1960

SUN	MON	TUES	WED	THUR	FRI	SAT
1	2	3	4	5	6	7
8	9	10	11	12	13	14
15	16	17	18	19	20	21
22	23	24	25	26	27	28
29	30	31



1960

APRIL

S	M	T	W	T	F	S
					1	2
3	4	5	6	7	8	9
10	11	12	13	14	15	16
17	18	19	20	21	22	23
24	25	26	27	28	29	30

JUNE

1960

S	M	T	W	T	F	S
			1	2	3	4
5	6	7	8	9	10	11
12	13	14	15	16	17	18
19	20	21	22	23	24	25
26	27	28	29	30		



THERE IS FUN FOR EVERYONE IN THE FAMILY . . . EVERY DAY AT SUN VALLEY, IDAHO

UNION PACIFIC RAILROAD COLORPHOTO

UNION PACIFIC RAILROAD

ROAD OF THE DAILY *Domeliners* AND *Streamliners*

JUNE • 1960

SUN	MON	TUES	WED	THUR	FRI	SAT
.	.	.	1	2	3	4
5	6	7	8	9	10	11
12	13	14	15	16	17	18
19	20	21	22	23	24	25
26	27	28	29	30	.	.



1960

MAY

JULY

1960

S	M	T	W	T	F	S
1	2	3	4	5	6	7
8	9	10	11	12	13	14
15	16	17	18	19	20	21
22	23	24	25	26	27	28
29	30	31				

S	M	T	W	T	F	S
					1	2
3	4	5	6	7	8	9
10	11	12	13	14	15	16
17	18	19	20	21	22	23
24/31	25	26	27	28	29	30



SNOWCLAD MOUNT HOOD LOOMS OVER THE FARMS AND ORCHARDS OF OREGON

RAY ATKESON COLORPHOTO

UNION PACIFIC RAILROAD

ROAD OF THE DAILY *Domeliners* AND *Streamliners*

JULY • 1960

SUN	MON	TUES	WED	THUR	FRI	SAT
.	1	2
3	4	5	6	7	8	9
10	11	12	13	14	15	16
17	18	19	20	21	22	23
24/31	25	26	27	28	29	30



1960

JUNE

AUGUST

1960

S	M	T	W	T	F	S
			1	2	3	4
5	6	7	8	9	10	11
12	13	14	15	16	17	18
19	20	21	22	23	24	25
26	27	28	29	30		

S	M	T	W	T	F	S
	1	2	3	4	5	6
7	8	9	10	11	12	13
14	15	16	17	18	19	20
21	22	23	24	25	26	27
28	29	30	31			



CHAPEL OF TRANSFIGURATION IN JACKSON HOLE, GRAND TETON NATIONAL PARK, WYOMING

UNION PACIFIC RAILROAD COLORPHOTO

UNION PACIFIC RAILROAD

ROAD OF THE DAILY *Domeliners* AND *Streamliners*

AUGUST • 1960

SUN	MON	TUES	WED	THUR	FRI	SAT
.	1	2	3	4	5	6
7	8	9	10	11	12	13
14	15	16	17	18	19	20
21	22	23	24	25	26	27
28	29	30	31	.	.	.



1960

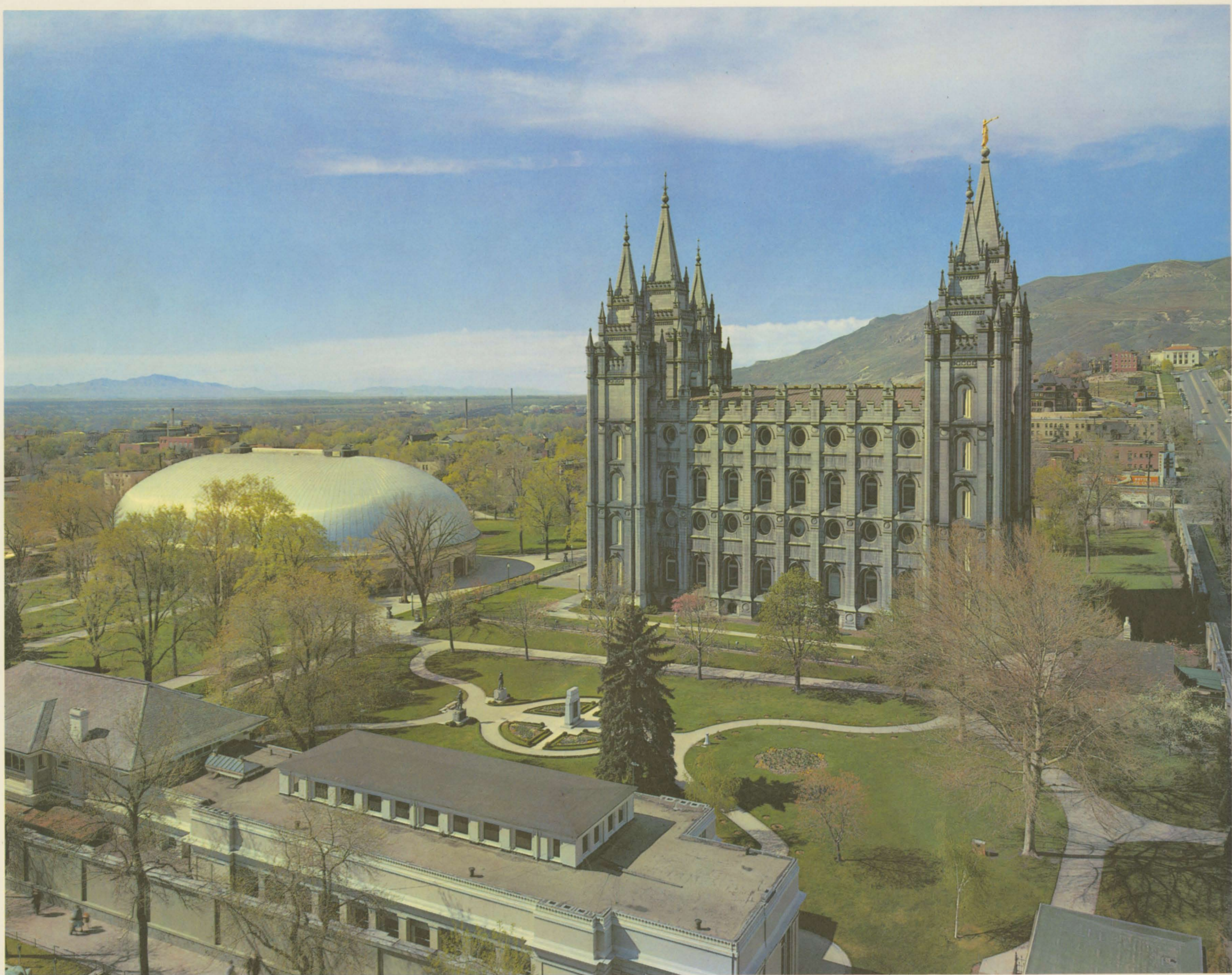
JULY

SEPTEMBER

1960

S	M	T	W	T	F	S
					1	2
3	4	5	6	7	8	9
10	11	12	13	14	15	16
17	18	19	20	21	22	23
24/31	25	26	27	28	29	30

S	M	T	W	T	F	S
				1	2	3
4	5	6	7	8	9	10
11	12	13	14	15	16	17
18	19	20	21	22	23	24
25	26	27	28	29	30	



UNION PACIFIC RAILROAD COLORPHOTO

WORLD-FAMED TEMPLE AND TABERNACLE OF THE MORMON CHURCH, SALT LAKE CITY, UTAH

UNION PACIFIC RAILROAD

ROAD OF THE DAILY *Domeliners* AND *Streamliners*

SEPTEMBER • 1960

SUN	MON	TUES	WED	THUR	FRI	SAT
.	.	.	.	1	2	3
4	5	6	7	8	9	10
11	12	13	14	15	16	17
18	19	20	21	22	23	24
25	26	27	28	29	30	.



1960

AUGUST

S	M	T	W	T	F	S
	1	2	3	4	5	6
7	8	9	10	11	12	13
14	15	16	17	18	19	20
21	22	23	24	25	26	27
28	29	30	31			

OCTOBER

1960

S	M	T	W	T	F	S
						1
2	3	4	5	6	7	8
9	10	11	12	13	14	15
16	17	18	19	20	21	22
23/30	24/31	25	26	27	28	29



SPIRIT LAKE AT THE FOOT OF MOUNT ST. HELENS IN SOUTHERN WASHINGTON

RAY ATKESON COLORPHOTO

UNION PACIFIC RAILROAD

ROAD OF THE DAILY *Domeliners* AND *Streamliners*

OCTOBER • 1960

SUN	MON	TUES	WED	THUR	FRI	SAT
.	1
2	3	4	5	6	7	8
9	10	11	12	13	14	15
16	17	18	19	20	21	22
23/30	24/31	25	26	27	28	29



1960

SEPTEMBER

S	M	T	W	T	F	S
				1	2	3
4	5	6	7	8	9	10
11	12	13	14	15	16	17
18	19	20	21	22	23	24
25	26	27	28	29	30	

NOVEMBER

1960

S	M	T	W	T	F	S
		1	2	3	4	5
6	7	8	9	10	11	12
13	14	15	16	17	18	19
20	21	22	23	24	25	26
27	28	29	30			



THE NEW YEAR'S DAY "TOURNAMENT OF ROSES" PRECEDES THE FAMOUS "ROSE BOWL" GAME AT PASADENA, CALIFORNIA

UNION PACIFIC RAILROAD COLORPHOTO

UNION PACIFIC RAILROAD

ROAD OF THE DAILY *Domeliners* AND *Streamliners*

NOVEMBER • 1960

SUN	MON	TUES	WED	THUR	FRI	SAT
.	.	1	2	3	4	5
6	7	8	9	10	11	12
13	14	15	16	17	18	19
20	21	22	23	24	25	26
27	28	29	30	.	.	.



1960

OCTOBER

DECEMBER

1960

S	M	T	W	T	F	S
						1
2	3	4	5	6	7	8
9	10	11	12	13	14	15
16	17	18	19	20	21	22
23/30	24/31	25	26	27	28	29

S	M	T	W	T	F	S
				1	2	3
4	5	6	7	8	9	10
11	12	13	14	15	16	17
18	19	20	21	22	23	24
25	26	27	28	29	30	31



THE "ROUNDHOUSE," ON MOUNT BALDY, IS A REFRESHMENT CENTER FOR SKIERS

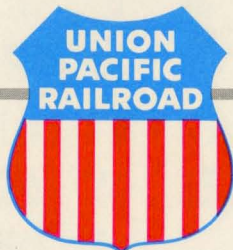
UNION PACIFIC RAILROAD COLORPHOTO

UNION PACIFIC RAILROAD

ROAD OF THE DAILY *Domeliners* AND *Streamliners*

DECEMBER • 1960

SUN	MON	TUES	WED	THUR	FRI	SAT
.	.	.	.	1	2	3
4	5	6	7	8	9	10
11	12	13	14	15	16	17
18	19	20	21	22	23	24
25	26	27	28	29	30	31



1960

NOVEMBER

JANUARY

1961

S	M	T	W	T	F	S
.	.	1	2	3	4	5
6	7	8	9	10	11	12
13	14	15	16	17	18	19
20	21	22	23	24	25	26
27	28	29	30			

S	M	T	W	T	F	S
1	2	3	4	5	6	7
8	9	10	11	12	13	14
15	16	17	18	19	20	21
22	23	24	25	26	27	28
29	30	31				



UNION PACIFIC RAILROAD COLORPHOTO

ONE OF UNION PACIFIC'S FLEET OF NEW 8500 H.P. GAS TURBINE-ELECTRIC LOCOMOTIVES

UNION PACIFIC RAILROAD

ROAD OF THE DAILY *Domeliners* AND *Streamliners*

1961

JANUARY							FEBRUARY							MARCH								
S	M	T	W	T	F	S	S	M	T	W	T	F	S	S	M	T	W	T	F	S		
1	2	3	4	5	6	7				1	2	3	4				1	2	3	4		
8	9	10	11	12	13	14	5	6	7	8	9	10	11	5	6	7	8	9	10	11		
15	16	17	18	19	20	21	12	13	14	15	16	17	18	12	13	14	15	16	17	18		
22	23	24	25	26	27	28	19	20	21	22	23	24	25	19	20	21	22	23	24	25		
29	30	31					26	27	28					26	27	28	29	30	31			
APRIL							MAY							JUNE								
S	M	T	W	T	F	S	S	M	T	W	T	F	S	S	M	T	W	T	F	S		
						1		1	2	3	4	5	6					1	2	3		
2	3	4	5	6	7	8	7	8	9	10	11	12	13	4	5	6	7	8	9	10		
9	10	11	12	13	14	15	14	15	16	17	18	19	20	11	12	13	14	15	16	17		
16	17	18	19	20	21	22	21	22	23	24	25	26	27	18	19	20	21	22	23	24		
23/30	24	25	26	27	28	29	28	29	30	31				25	26	27	28	29	30			
JULY							AUGUST							SEPTEMBER								
S	M	T	W	T	F	S	S	M	T	W	T	F	S	S	M	T	W	T	F	S		
						1				1	2	3	4	5							1	2
2	3	4	5	6	7	8	6	7	8	9	10	11	12	3	4	5	6	7	8	9		
9	10	11	12	13	14	15	13	14	15	16	17	18	19	10	11	12	13	14	15	16		
16	17	18	19	20	21	22	20	21	22	23	24	25	26	17	18	19	20	21	22	23		
23/30	24/31	25	26	27	28	29	27	28	29	30	31			24	25	26	27	28	29	30		
OCTOBER							NOVEMBER							DECEMBER								
S	M	T	W	T	F	S	S	M	T	W	T	F	S	S	M	T	W	T	F	S		
1	2	3	4	5	6	7				1	2	3	4							1	2	
8	9	10	11	12	13	14	5	6	7	8	9	10	11	3	4	5	6	7	8	9		
15	16	17	18	19	20	21	12	13	14	15	16	17	18	10	11	12	13	14	15	16		
22	23	24	25	26	27	28	19	20	21	22	23	24	25	17	18	19	20	21	22	23		
29	30	31					26	27	28	29	30			24/31	25	26	27	28	29	30		



UNION PACIFIC RAILROAD COLORPHOTO

ROOF GARDEN DINING IS A THRILL ENJOYED ONLY ON UNION PACIFIC

UNION PACIFIC RAILROAD

ROAD OF THE DAILY *Domeliners* AND *Streamliners*

FIRST PAGE Night and day there is fun for all at Sun Valley, Idaho, the world-famous sports resort in the Sawtooth Mountains, operated by Union Pacific Railroad. Skiing, skating, sleigh riding, outdoor warm-water swimming are followed by music, bowling, dancing and other evening entertainment. This charming night view, reminiscent of a Swiss Alpine community, gives a hint of the picturesque beauty of the entire Challenger Inn Village. 3 seconds with supplementary flash bulbs, F11, Daylight Color Film, 4x5 Eastman View Camera, 127mm Ektar Lens.

JANUARY Known as a city of hills, San Francisco is famous for its cable cars and Nob Hill. The early-day tycoons, popularly called "Nabobs," chose this eminence on which to erect their mansions, supplanted in recent years by apartment houses, clubs and famous hotels. The brownstone building on the left was the only one of the Nob Hill mansions little damaged by the great fire of 1906. Other famous heights in San Francisco are Telegraph Hill and Russian Hill. (Photo by Thomas M. Moulin, San Francisco) 1/25 second, F16, Daylight Color Film, 4x5 Deardorf View Camera, 4" wide field Ektar Lens.

FEBRUARY Hoover Dam is here seen from downstream on the Colorado River. This stupendous engineering accomplishment, constructed for flood control and irrigation as well as to furnish tremendous amounts of electric power, is annually visited by more than two million people. Above the dam is extensive Lake Mead, a national recreation area for boating, fishing and swimming. Each year fishing derbies and motorboat regattas are held here. It is easily reached from Las Vegas, Nevada, the "entertainment capital of the nation," when traveling to or from Southern California via Union Pacific Railroad. 1/25 second, F28, Daylight Color Film with CC 15G Filter, 4x5 Linhof, 6" Symmar Lens.

MARCH The White House, official residence and offices of the President, is probably the most esteemed building in our nation's capital. First occupied by John Adams in 1800, and rebuilt after the War of 1812, it has sheltered our chief executives ever since. This is a view of the South Portico, facing the White House lawn, where receptions are sometimes held and such events as the Easter egg roll for children. (Photo by A. Devaney, Inc.) F4.7, Daylight Color Film, Speed Graphic, 127mm Ektar Lens.

APRIL Cool Colorado is a state of many lofty peaks, surrounding jewel-like lakes. This scene is but one of many delightful vacation spots in Rocky Mountain National Park, about seventy miles northwest of Denver, mile-high capital of Colorado, reached by fast Union Pacific Domeliners and Streamliners from Chicago, St. Louis, or the Pacific Coast. 1/10 second, F20, Daylight Color Film, 8x10 Eastman 2-D Camera, 10" Ektar Lens.

MAY Pouring the waters of the other four Great Lakes into Lake Ontario, divided by the peaceful international border, Niagara Falls has been since our childhood the epitome of natural grandeur. Its volume of waterflow is greater than that of any other falls in North America, and is surpassed only by Guaira in Brazil and Khon in Laos—neither of which approach Niagara in height. For generations a honeymooners' Mecca, this mighty cataract draws other thousands of tourists annually. (Photo by Thomas Peters Lake) 1/25 second, Daylight Color Ektachrome Film, Custom-made View Camera, Ektar Lens.

JUNE Sun Valley, Idaho, is an ideal resort for family vacations. If you seek action there's outdoor ice skating, golf, tennis, swimming, horseback riding, fishing, skeet and trap shooting, to name a few activities. If you just want to loaf and relax you'll enjoy a bracing climate of warm sunny days and cool nights with informal evening entertainment and dancing. Sun Valley is owned and operated by the Union Pacific Railroad. 1/10 second, F20, Daylight Color Film, 8x10 Eastman 2-D Camera, 14" Ektar Lens.

JULY Mount Hood lifts its snowclad crest 11,245 feet above sea level in north-central Oregon. Carrying seven glaciers on its shoulders, this immense cone offers a friendly challenge to hundreds of mountain climbers annually, without any extreme hazards. Climate and scenery combine to make the Pacific Northwest "Evergreen Empire" a vacation Mecca for many. (Photo by Ray Atkeson, Portland) 1/2 second, F18, Daylight Color Film with Polaroid Haze Filter, 4x5 Speed Graphic, 127mm Ektar Lens.

AUGUST Divine services are held each Sunday during the summer at this tiny church in Grand Teton National Park, with the glory and majesty of God's handiwork all around. A week or a month in the Jackson Hole-Teton Mountains area is certain to restore the spirit and refresh one physically. In this region are many excellent dude ranches as well as Jackson Lake Lodge, Jenny Lake Lodge and Colter Bay Marina. 1/10 second, F20, Daylight Color Film, 8x10 Eastman 2-D Camera, 10" Ektar Lens.

SEPTEMBER The metropolis of mid-America, on the shore of Lake Michigan, Chicago is the second largest city in the Western Hemisphere. It is noted for its grain exchange, manufacturing, parks and boulevards, and is a hub of the railroad network of the United States. The Museum of Natural History, Art Institute, Adler Planetarium, and Museum of Science and Industry offer interesting exhibits to resident and traveler. Union Pacific Domeliners and Streamliners reach Chicago Union Station over The Milwaukee Road from Council Bluffs, Iowa. (Photo by Kaufmann & Fabry Co.) 1/25 second, F16, Daylight Color Film, 8x10 Deardorf Camera, 9 1/2" Goetz Dagor Lens.

OCTOBER Mount St. Helens soars 9,671 feet into the southern Washington sky just 50 miles north of Portland. Snowclad peaks and sparkling lakes are scattered lavishly among the lush forests and fertile farmlands of Washington. Gateway to British Columbia and Alaska, the Chinook State attracts thousands each year. (Photo by Ray Atkeson, Portland) 1/10 second, F16, Daylight Color Film with CC Filter, 4x5 Linhof Camera, 135mm Schneider Lens.

NOVEMBER A peaceful autumn view of a church, homes, and forests of New Hampshire brings us close to the revered land of our forefathers as we approach the Thanksgiving season. There is beauty and strength in the New England countryside, to match the wisdom of those noble men who here forged the nucleus of a new nation. (Photo by Harland Sutherland of Kabel Art Photos) 1/5 second, F28, Daylight Color Film, 5x7 Graphic View Camera.

DECEMBER At the "Roundhouse," two-thirds up the side of Mount Baldy, skiers and chairlift riders may enjoy a nourishing hot snack and view an inspiring panorama stretching for leagues across the Sawtooth Mountains or the plains to the south. Eight electrically operated chairlifts and an abundance of timber free slopes assure the maximum of downhill skiing on the mountains surrounding Sun Valley, Idaho. 1/25 second, F14, Daylight Color Film, 4x5 Speed Graphic, 8" Ektar Lens.

14th PAGE Through the valleys and mountains of the wonderful West stretch the tracks of the Union Pacific Railroad, traveled by luxurious Domeliners and fast freight trains, all speeding to their destinations. The steel highway is direct, secure and trouble free, and the engineer does the driving while you enjoy the panorama from Dome seat or your private window, enjoy a refreshing beverage or visit with friends, dine on the finest cuisine or sleep in comfortable accommodations. This view was taken of the Domeliner "City of St. Louis" in Cajon Pass near San Bernardino, California. 1/25 second, F20, Daylight Color Film with 10-G Filter, 4x5 Linhof Camera with Schneider Symmar 150mm Lens.

15th PAGE Union Pacific freight trains are laden with the products of America, from the factories and farms of your community or to your stores and homes. This view shows one of Union Pacific's new 8500 horsepower gas turbine-electric locomotives speeding the necessities and luxuries of our times across the vast reaches of the West at economical rates. Yet from these low charges the railroads build and maintain all of their trains, tracks, stations, and other equipment, and pay heavy taxes to communities, states and nation. 1/5 second, F7, Daylight Color Film, 8x10 Eastman 2-D Camera, 10" Ektar Lens.

16th PAGE "Roof Garden" dining is an exclusive feature with Union Pacific, i.e., the only Dome Dining Cars in the world are on the Domeliners "City of Portland" and "City of Los Angeles," in daily service between Chicago and the Pacific Coast cities for which they are named. In addition to the dome dining room, pictured above, there is the beautiful main dining room on the lower level, and on another level beneath the dome room is the "Gold Room," a private dining room with seating for ten (two tables each seated up to five). In all three dining rooms you will enjoy the same fine food served in a gracious manner.

Composite print: Interior; F32, Daylight Color Film with Daylight Blue Flashbulbs and CC 30 R Filter, 8x10 Deardorf Camera with 9" Lens. Exterior; 1/25 second, F14, Daylight Color Film, 4x5 Speed Graphic, 127mm Ektar Lens.

Prints of any of these subjects, in the same size as in this calendar, may be obtained free of charge by writing Advertising Department, Union Pacific Railroad, Omaha 2, Nebraska, stating your choice. Union Pacific Railroad offers without charge attractively illustrated booklets describing the regions it serves. Request the one of your choice from our Advertising Department or traffic office in your city.