

Dude Ranches

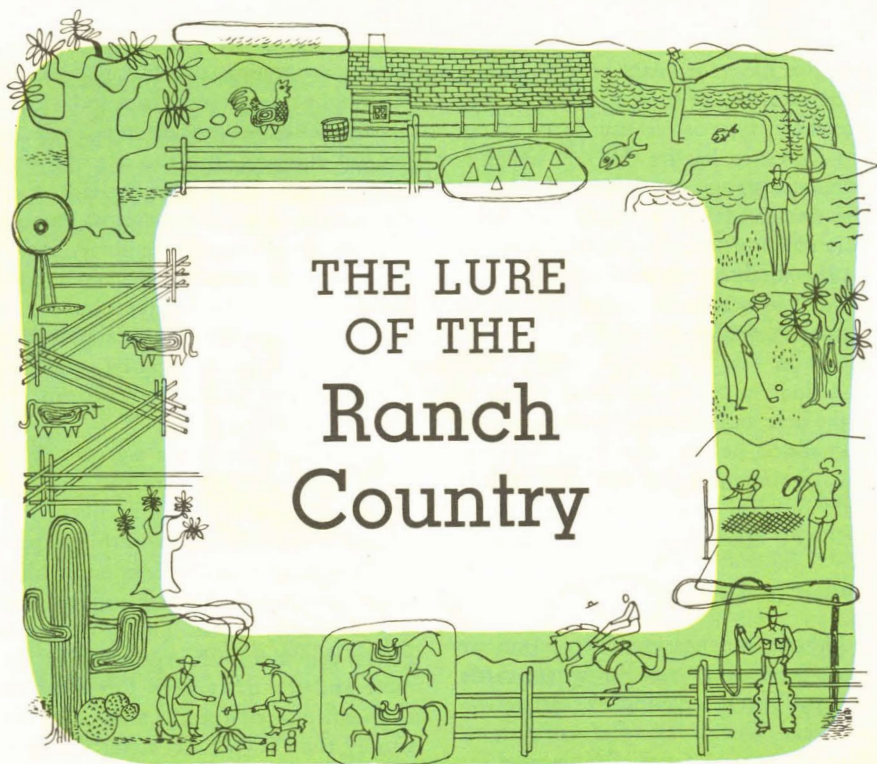
OUT WEST



UNION PACIFIC RAILROAD

HAPPY HOURS IN THE SADDLE





THE LURE OF THE Ranch Country

The "Dude Ranch" vacation, annually becoming more popular, is as much a part of Americana as the Pony Express and Wells Fargo. Shortly after the turn of the century, some of the ranches in the Union Pacific West began accepting "paying guests" during the summer months. These "guests" in many instances, were people whose nerves had frayed and grown weary of the bustle and din of city life, and who, through mutual friends, arranged to take advantage of the delightful informality of ranch life, and the dry, clear, exhilarating air of the western country. Out of these beginnings have evolved the dude

ranches of today, where the visitor is still a guest in the home of the rancher. For this reason, most ranchers insist on exchanging references with prospective patrons.

Practically every section of the West has its quota of these dude ranches offering all degrees of comfort and accommodations. Some have elaborate modern facilities, while others offer a more-or-less "rough and ready" ranch life.

Visitors or guests at these ranches are affectionately referred to as "dudes," hence "dude ranch" — a ranch where "dudes" are entertained. Many eastern

families have for years been spending their vacations at these ranches, as they prefer this type of vacation to all others.

Each ranch has its "brand" which is a letter, insignia, or often the initials of the owner. It is a mark which is "branded" or burned into the hides of all the stock on the ranch for the purpose of identification. Many of the individual ranch brands are shown in this book.

A dude ranch is an ideal place to make new and congenial friends, for, as was stated before, most ranchers exchange references and will take in only folks of good character who get along well with others.

What to Expect

No two ranches are alike. Some are large "operating" ranches where cattle are "run" and ranching is carried on the year 'round regardless of guests. Another type is especially planned for visitors during the summer. Still another is the mountain "lodge" or "resort" where perhaps fishing might be featured.

Practically all ranches charge by the week, which charge includes your cabin or room accommodations, your meals, saddle horse (in some cases quoted extra) and all the numerous services which the ranch furnishes in order to make your stay both comfortable and interesting. It is, in fact, an "all-expense" proposition and should be considered in that light.

A dude ranch vacation usually includes a lot of horseback riding along scenic mountain trails, and in addition

fishing, swimming, dancing, picnicking, moonlight rides to steak fries and wiener roasts, chuck-wagon dinners, and in general entering into the life of a real western cattle ranch. For the elderly or the not-so-ambitious type, most ranches have inviting lounges with library, radio, (television in some areas), and broad, sun-swept verandas for just "taking it easy." Some ranches arrange automobile sight-seeing trips to near-by spots of scenic interest, Indian reservations, or rodeos held round-about.

The food served on a western dude ranch is plain, well-cooked and in ample portions. It cannot be likened to a hotel or summer resort in this respect for western appetites call for something quite substantial. Guests are usually served "family" style. The ranch truck garden provides fresh vegetables for the table and the dairy herd furnishes an abundance of rich milk. Some ranches supply their own beef. After a day in the open you'll find yourself "stowing away" this wholesome ranch food like one of the regular "hands."

In the evening there is likely to be informal entertainment, card games, singing and dancing in the central lodge. On many ranches, Saturday night is the night to go to the neighboring town for the barn dance, and visit with wranglers and guests from other ranches.

What to Wear

Felt hats, wool shirts, khaki trousers, riding breeches or heavy slacks and stout walking shoes are about right for ranch life. The popular "Levis" (overall pants) and western boots, as well as

more elaborate western costume clothes, may be purchased at many ranches or in western towns. Keep in mind cold nights, warm mid-day sun, possible rain and snow in high altitudes, and outfit accordingly. But don't let your wardrobe bother you too much! Just keep it simple and western.

Taking the Children

Growing children thrive on the care-free, outdoor life; the delicious, well-cooked food, topped off with all the rich milk they can drink. It gives them new zest and keenness, too, so, by all means, take 'em along! Some ranches make special family rates.

Hunting and Fishing

Practically all ranches offer excellent fishing near by, or pack trips to more remote lakes and streams, if you wish. Big game hunting in season is also fea-

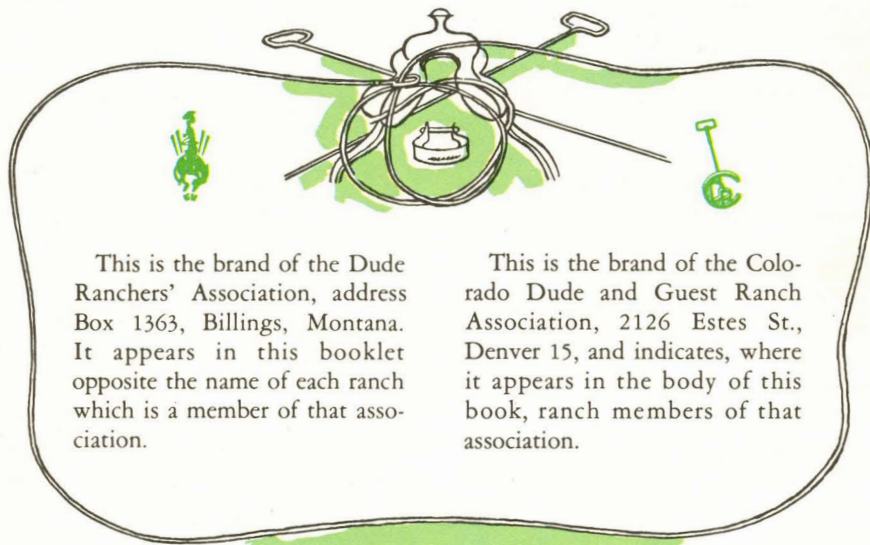
tured by many ranches, some even going so far as to guarantee "the bag."

Reservations

It is advisable that you write to the ranch well in advance of your arrival to make definite reservations. When you write ask for literature as most ranch owners issue folders which contain illustrations and general information about their ranch which will assist you in reaching a decision.

Responsibility

Union Pacific believes to be reliable the statements regarding various ranches printed in this book, and they have been verified as much as possible. However, it cannot guarantee them as it has no part in the management of the ranches. Persons interested should correspond, in advance, with the ranch managers or owners who are glad to give references.



This is the brand of the Dude Ranchers' Association, address Box 1363, Billings, Montana. It appears in this booklet opposite the name of each ranch which is a member of that association.

This is the brand of the Colorado Dude and Guest Ranch Association, 2126 Estes St., Denver 15, and indicates, where it appears in the body of this book, ranch members of that association.



Jackson Hole Ranches

The famed Jackson Hole region in northwestern Wyoming lies just south of Yellowstone National Park and east of Grand Teton National Park and Jackson Lake. Once the hideout for "outlaws," it is today the home of friendly, hospitable ranchers. It is a verdant valley and a scenic wonderland where plenty of game abounds and the lakes and streams are teeming with many varieties of fish. Foot and horse-back trails are numerous and safe. Reached from the Union Pacific rail gateways of Victor, Idaho, and Rock Springs, Wyoming.



ANCHOR RANCH. Location: Two miles north of Wilson, Wyoming in Jackson Hole Country. Take Union Pacific to Rock Springs, Wyoming, or Victor, Idaho, where ranch car meets guests by appointment.

Accommodations: For 12 people including children over 12, in modern cabins with bath, twin or double beds. Excellent meals served in the main lodge. Open all year.

Activities: Riding, fishing in own trout streams, hiking, mountain climbing, hunting, skiing.

Rates: Write Mrs. F. Hiller, Anchor Ranch, Wilson, Wyoming.

BAR B-C RANCH. Location: In historic Jackson Hole, Wyoming. Elevation: 6,500 feet. Take Union Pacific to Rock Springs, Wyoming or Victor, Idaho. Guests are met by previous arrangement.

Accommodations: For 18 people in rustic cabins with bath. Also house-keeping cabins. Season: June 15 through October 15.

Activities: Fishing, swimming (two pools), riding, picnicking, mountain climbing.

Rates: American, upon request. Family and length of stay rates. Write Mr. and Mrs. John Cooke, Moose Post Office, Jackson Hole, Wyoming.

BROKEN ARROW RANCH. Location: Southern part of Jackson Hole. Take Union Pacific to Rock Springs, Wyoming, or Victor, Idaho, where ranch car meets guests by appointment. A working cattle ranch.

Accommodations: For 25 persons in new, modern deluxe cabins. May 15 to October 1.



Activities: Riding, fishing, general ranch activities.

Rates: \$100.00 per week per person, American plan. Family rates on request. References exchanged. No reservations accepted for less than seven days. For information or reservations write Mr. and Mrs. Buster Leck, Broken Arrow Ranch, Jackson, Wyoming.

CAMP CREEK RANCH. Location: South of Jackson, Wyoming on Hoback Canyon Road. Take Union Pacific to Rock Springs, Wyoming, where guests are met by arrangement. Elevation 6,000 feet.

Accommodations: For 32 guests. Single and double cabins with showers. Season, June 1 to October 31.

Activities: Riding, fishing, hunting, pack trips.

Rates: Write Oral Wheeler, Camp Creek Ranch, Bondurant, Wyoming.

CIRCLE H RANCH. Location: Three miles from Moose, Wyoming. Take Union Pacific to Rock Springs, Wyoming, Montpelier or Victor, Idaho, thence bus to Moose. Season June 15 to October 20. Hunting camp September 10 to November 10.

Accommodations for 28 people in separate cabins.

Activities: Riding, fishing, sightseeing, pack trips, big game hunting in season.

Rates: On application. Write Harry Barker, Jr., Circle H Ranch, Moose, Wyoming.

DIAMOND G RANCH. Location: 30 miles from Dubois, Wyoming. Take Union Pacific to Rawlins, Wyoming, or West Yellowstone, Montana. Elevation 9,200 feet. Guests met by arrangement. Season: July 1 to October 31.

Accommodations: For 50 guests in rustic log ranch house and cabins with private bath and sitting room.

Activities: Riding, fishing, regular ranch activities, pack trips and big game hunting in season.

Rates: Upon request, references ex-

changed. Write P. E. Yarborough, Diamond G Ranch, Dubois, Wyoming.

DOUBLE DIAMOND RANCH. Location: Nineteen miles north of Jackson, (Moose P. O.) Wyoming. Take Union Pacific to Victor, Idaho, or Rock Springs, Wyoming, where ranch car meets guests by arrangement. Also daily bus. Season, June 1 to October 1. El. 6,700 feet.

Accommodations: For 30 to 35 guests. Single and double log cabins with bath. Dining room and lounging room in large log cabin.

Activities: General ranch life, hiking, riding, fishing, swimming, mountain climbing and pack trips.

Rates: Modified American plan \$6.50 to \$14.00 a day per person. Write Nola Williams Brown, Double Diamond Ranch, Moose, Wyoming.

FISH CREEK RANCH. Location: 1 mile south of Wilson, Wyoming. Take Union Pacific to Rock Springs, Wyoming, or Victor, Idaho, where guests can be met by special arrangement. Elevation 6,200 feet. Open all year.

Accommodations: For 26 guests in modern cabins of log construction.

Activities: Fishing, riding, boating, swimming, pack trips, tours, winter sports.

Rates: June and September (after Labor Day) \$100.00 a week, July and August — \$110.00 a week, family rates and rates for extended stay on request to Gilman Ordway, Fish Creek Ranch, Wilson, Wyoming.

FOUR LAZY F RANCH. Location: On the Snake River in the heart of the Jackson Hole country. Elevation 6,400 feet. Season, July 1 to September 30. Take Union Pacific to Rock Springs, Wyoming, or Victor, Idaho, where guests are met by arrangement.

Accommodations: Two double bedroom cabins with bathrooms and electricity. Double bedroom in main cabin with private bath.

Activities: Riding, swimming, shore and boat fishing on the Snake River and various lakes. Pack trips into the mountains and trips to Yellowstone National Park can be arranged.

Rates: Upon request to Mr. and Mrs. Henry Oliver Jr., Moose Post Office, Jackson Hole, Wyoming.



HEART 6 RANCH. Location: 8 miles east of Moran, Wyoming. Elevation 7,000 feet. Take Union Pacific to Rock Springs, Wyoming, or Victor, Idaho, where ranch wagon will meet guests by arrangement. Season, June, July and August. Big game hunting September through December.

Accommodations: In modern and semi-modern cabins, and in main lodge. Family groups preferred. Meals family style.

Activities: Riding, fishing, hiking, pack trips, photography, etc.

Rates: On request. Write Kenneth Sailors, Heart 6 Ranch, Moran, Wyoming.

JENNY LAKE LODGE. Location: Near Jenny Lake about 12 miles south of Jackson Lake Lodge, Wyoming in Grand Teton National Park. Elevation 6,870 feet. Take Union Pacific to Rock Springs, Wyoming, or Victor, Idaho, thence bus.

Accommodations: For 72 guests. Central lodge and dining room with a number of one- and two-room deluxe rustic cabins, with hot and cold running water, all with bath and toilet. June 12 to September 8.

Activities: Fishing, hiking, mountain climbing, boating, riding and motoring.

Rates: Modified American plan. On application. For information and reservations write Grand Teton Lodge Company, Jackson, Wyoming. Winter address: 419 Howard Bldg., 209 Post Street, San Francisco 8, Calif.

MCCALLUM'S JACKSON HOLE RANCH. Location: In the heart of the Jackson Hole country with a magnificent view of the Grand Teton and the Teton range, and large frontage on the Snake

River. Take Union Pacific to Victor, Idaho. Guests met by arrangement.

Accommodations: For 15 to 20 guests in modern deluxe cabins, each with private bath. Spacious lounge room in main building with everything needed for restful relaxation. Delicious meals served family style in the main building.

Activities: Riding, fishing, hiking. Sunday morning rides to the unique chapel of the Transfiguration. Riverside breakfasts and dinners.

Rates: Upon request to Wm. J. McCallum, Moose, Wyoming. Or, October to June, 3108 Nottingham Lane, Modesto, California.

MCNEELY'S RANCH. Location: 2 miles south of Wilson, Wyoming, 9 miles from Jackson. Take Union Pacific to Rock Springs, Wyoming, or Victor, Idaho, thence by connecting bus. Elevation 6,500 feet. Operating cattle and horse ranch and summer ranch camp for boys and girls.

Accommodations: For 30 guests in modern and semi-modern cabins. June through September.

Activities: Riding, calf roping, swimming, fishing, hiking, pack trips, etc.

Rates: \$100.00 per week. Write McNeely Ranch, Wilson, Wyoming.

MOOSE HEAD RANCH. Location: 28 miles north of Jackson, Wyoming, (Elk P. O.) Take Union Pacific to Victor, Idaho, or Rock Springs, Wyoming, where guests are met by appointment. Season May 15 to November 1. Alt. 6,780 feet.

Accommodations: For 35 guests. One- and two-room cabins, all modern.

Activities: Riding, fishing, swimming, picnics, camp fire parties, mountain climbing; sight-seeing and hunting trips arranged on short notice. Big game hunting in season. An ideal Family Ranch.

Rates: American plan, rates on request. References exchanged. For information or reservations write Fred J. Topping, Moose Head Ranch, Elk P. O., Jackson Hole, Wyoming.





R LAZY S RANCH. Location: In center of Jackson Hole with full view of Teton Mountains. Frontage on famous Snake River. Elevation 6,400 feet. Very close to Yellowstone National Park. Take Union Pacific to Rock Springs, Wyoming, or Victor, Idaho. Season June 15 to October 15.

Accommodations: Central lodge and cabins, electricity, automatic hot water. Some cabins have living rooms, all have lounging space. Meals family style. Typical western ranch home with no resort atmosphere.

Activities: Riding, hiking, fishing, mountain climbing, rodeos, barbecues, swimming.

Rates: \$84.00 to \$140.00 per person per week. References required and exchanged. Write Mr. and Mrs. Robert McConaughy, Apt. 901, 470 Thirteenth East, Salt Lake City, Utah; summer address, Moose, Wyoming.

RIMROCK RANCH. Location: In the famous Jackson Hole country. Elevation 7,000 feet. Take Union Pacific to Rock Springs, Wyoming, or Victor, Idaho, where guests are met by appointment. There is also regular bus service from above stations to Jackson, Wyo. Season: June through Labor Day. Hunting season: Sept. 10-Oct. 31; also spring season for Bear.

Accommodations: For 16 guests in modern lodge or double cabins. Informal ranch life.

Activities: Riding, pack trips, fishing, swimming, chuckwagon meals, breakfast and moonlight rides, "float trips" by rubber boat on Snake River, auto trips to Grand Teton and Yellowstone National Parks by special arrangement. Big game hunting in season.

Rates: American plan, \$100.00 per week per person, \$85 per week for children under 14 years. Rates for hunting season on request. Write Mr. Bud Thompson, owner-manager, Rimrock Ranch, Jackson, Wyoming.

TETON PASS RANCH. Location: Seven miles from Jackson, Wyoming in Teton National Forest. Elevation 6,250 feet. June 10 to October 15. Take Union Pacific to Rock Springs, Wyoming, thence via Jackson bus, or Victor, Idaho, where guests are met by arrangement.

Accommodations: In new modern deluxe cabins, each with private bath and living room. For 25 people. Meals family style.

Activities: Riding, fishing, swimming, mountain climbing, rodeos, sightseeing and pack trips. Hunting and skiing in season.

Rates: On request, write Mr. and Mrs. Harry Swanson, Teton Pass Ranch, Wilson, Wyoming, or 537 Gobel St., Rock Springs, Wyoming. Also family rates.

TETON VALLEY RANCH. Summer ranch camp for boys and girls (separate seasons) ages 10 through 17.

Location: 17 miles north and east of Jackson, Wyoming. 130 campers, 40 adult staff members. Escorted groups travel via Union Pacific to Rock Springs, Wyoming, thence by bus.

Accommodations: 23 log buildings. Warm springs swimming pool, 69° all year, 200 saddle horses, 38 pack mules.

Activities: Riding, pack trips, swimming, athletics, riflery, crafts, photography (dark room), fishing, roping, hiking, trips to Yellowstone and Grand Teton National Parks, rodeos, amateur radio instruction, camp fires, music, church services. Many special activities. Radio contact with pack trips.

Special season for boys and girls, 13 through 17, working ranch situation. Particulars upon inquiry.

Rates: References exchanged. For rates and literature write Wendell S. Wilson, director, Teton Valley Ranch, Jackson Hole, Kelly, Wyoming. Winter address: 2619 Oak Knoll Avenue, San Marino, California.





TRAIL CREEK RANCH. Location: Surrounded on three sides by Teton National Forest, and just a short distance from Crater Lake — for many years a stop-over for cattle drives and teamsters, Trail Creek is a working ranch. Take Union Pacific to Victor, Idaho, where guests are met by arrangement. Open all year.

Accommodations: For 26 guests in comfortable well-constructed all-year cabins. Meals served in lodge. Separate dining room for children.

Activities: Riding, fishing, hiking, swimming, pack tripping, canoeing, mountain climbing, barbecues, hunting in season, skiing in season. Weekly rodeos in Wilson. All ranch activities supervised.

Rates: For information on rates and transportation, write Elizabeth Woolsey, Wilson, Wyoming.

TRIANGLE X RANCH. Location: East of Grand Teton, 26 miles northeast of Jackson, Wyoming. Elevation 6,700 feet. Take Union Pacific to Rock Springs, Wyoming, thence bus to Jackson, where ranch car will meet guests, or car will meet guests at rail head — by appointment in either case.



Accommodations: For 45 to 50 guests in one and two sleeping-room log cabins, with bath. Dining room, lounge in main ranch house. June 1 to October 31.

Activities: Riding, fishing, pack trips, rodeos, ranch activities. Big game hunting.

Rates: On application to J. C. Turner, Triangle X Ranch, Moose, Wyoming. Winter address, 2063 Bryan Avenue, Salt Lake City, Utah. References required.





TURPIN MEADOW RANCH. Location: Twenty miles from Moran, Wyoming. Take Union Pacific to Rock Springs, Wyoming, or Victor, Idaho, thence bus to Jackson, Wyoming. Guests met by appointment. 6,732 feet.

Accommodations: For 25-30 guests in modern single and double cabins. May 15 to November 1.

Activities: Riding, fishing, pack trips, hunting, swimming, ranch games. Spring bear hunting.

Rates: American, on application to Bert Turner, Turpin Meadow Ranch, Moran, Wyoming.

V-V

V BAR V RANCH. Location: Thirty-two miles southeast of Jackson, Wyoming. Altitude 6,435 feet. Union Pacific to Rock Springs, Wyoming, or Victor, Idaho, thence bus to ranch.

Accommodations: For 25 to 30 guests in main lodge and single and double cabins. June to November.

Activities: Fishing, riding and instruction, swimming in mineral hot springs pool, big game hunting in season.

Rates: On application to Albert Feuz, V Bar V Ranch, Jackson, Wyo.

WHITE GRASS RANCH. Location: 20 miles from Jackson. Take Union Pacific to Rock Springs, Wyo., Montpelier or Victor, Idaho, where ranch car meets guests by appointment. Elevation 6,500 feet. Season June through September.

Accommodations: For 32 guests. Main cabin for meals; guest cabins with bath and living rooms. Swimming pool.

Activities: Riding, fishing, swimming, canoeing, hiking, mountain climbing, pack trips. Big game hunting in season.

Rates: On request. References exchanged. For information or reservations write Frank H. Galey, White Grass Ranch, Moose P. O., Jackson Hole, Wyoming.

H-B



Wind River — Green River Ranches



Midway between Yellowstone National Park and South Pass, in west central Wyoming, the Wind River Range of the Rocky Mountains flings up its rugged crest to form what is perhaps the most dramatic wilderness remaining in continental United States. Dude ranchers in this region usually meet their guests at Rock Springs, Wyoming, on the Union Pacific.

⑤ **CIRCLE S RANCH.** Location: 30 miles north of Pinedale and 130 miles northwest of Rock Springs, Wyoming. Take Union Pacific to Rock Springs, where ranch car meets guests by arrangement. Elevation 7,665 feet. Season May 10 to November 10.

Accommodations: For 20 guests. Main lodge with single and double cabins; all have running water, some with private bath.

Activities: Riding, fishing, pack trips, square dancing, selected auto trips. Big game hunting in season. Boat trips on Green River.

Rates: On application. Special rates for children. References exchanged. For information and reservations write L. W. (Bill) Isaacs, Circle S Ranch, Cora, Wyoming.

CM RANCH. Location: 5 miles from Dubois, Wyoming. Take Union Pacific to Rawlins, Wyoming, where guests are met by appointment. Elevation 7,000 feet. June 1 to October 31. CM

Accommodations: For 50 to 60 people. Central lodge, separate guest cabins of one, two or three rooms each with private bath, also central bath house with tub and shower facilities.

Activities: Riding with individually assigned horses. Expert instruction as needed. Fishing, weekly rodeos, square dancing, water skiing, swimming, and big game hunting in season. Pack trips arranged.

Rates: On application. References exchanged. For information or reservations write L. E. Shoemaker, CM Ranch, Dubois, Wyoming.



A

FLYING A RANCH. Location: Thirty-five miles north of Pinedale, Wyoming. Elevation 8,000 feet. Take Union Pacific to Rock Springs, Wyoming, where ranch car will meet guests by appointment. \$10.00 each way.

Accommodations: For twenty persons in log cabins accommodating two, three, or four. Bath house. Meals in main lodge. June 1 to November 1.

Activities: Riding, fishing, hunting, swimming, pack trips.

Rates: On request to Mr. Max B. Gardens, Pinedale, Wyoming. References exchanged.

GP

G P BAR RANCH. Location: Cora, Wyo. Elevation 8,000 feet. Take Union Pacific to Rock Springs, Wyoming, where guests are met with ranch car by appointment.

Accommodations: For thirty-five guests. June 15 to October 15.

Activities: Riding, fishing, hunting in season.

Rates: Rates and information by request to Stan. D. Decker, Cora, Wyoming.

T CROSS RANCH. Location: Fifteen miles north of Dubois, Wyo., reached via Union Pacific to Rawlins or Green River, Wyoming. Arrangements will be made for transportation of guests to the ranch. Elevation 7,900.

Accommodations: For twenty-five in one- or two-room cabins with private baths.

Activities: Range and mountain riding, trout fishing, pack trips. June 1 to October 15.

Rates: Will be quoted on request. References furnished and asked. Write Robert S. Cox, T Cross Ranch, Dubois, Wyoming.

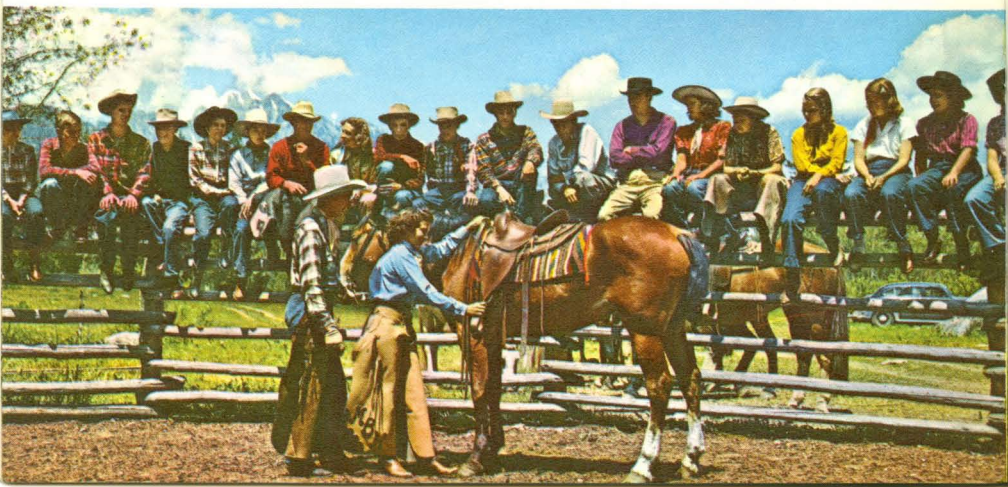
Z BAR U RANCH. Location: 25 miles north of Pinedale, Wyoming; 130 miles north of Rock Springs, Wyoming. Take Union Pacific to Rock Springs, thence bus. Will meet in Rock Springs by arrangement. June 1 to November 1.

Accommodations: For 25 guests. Ranch house and individual log cabins. Centrally located bath house.

Activities: Riding, fishing, swimming, rodeos, pack trips. Big game hunting in season.

Rates: On application. References exchanged. For information or reservations write Sidney Reynolds, Cora, Wyoming.

Z-U



Continental Divide and Snowy Range Ranches



A BAR A RANCH. Location: Encampment, Wyo., eighty-five miles west of Laramie on the Union Pacific. Ranch car will meet guests at Laramie or Rawlins, Wyoming by arrangement. 7,400 feet.

Accommodations: For 100 people in fine modern cabins suitable for 2 to 8 occupants, with private baths. June 15 to September 15.

Activities: Riding, fishing, swimming, tennis, skeet, dancing. Antelope, deer and bear hunting in season.

Rates: On request to Dallas Gant, A Bar A Ranch, Encampment, Wyoming. Winter address, Rancho de Los Caballeros, Wickenburg, Arizona. References exchanged.

BOYER YL RANCH. Location: Situated in foothills of Sierra Madre (Rocky) Mountains. Take Union Pacific to Rawlins, Wyoming, where guests are met by ranch car. Elevation 6,800 feet. Season June to September.

Accommodations: For 12 to 15 guests. Central ranchhouse and log cabins with private bath.

Activities: Riding, fishing, hunting, pack trips, polo, swimming, deck tennis, croquet, horseshoes.

Rates: On request. References exchanged. For information write Boyer YL Ranch, Savery, Wyoming.



FRENCH CREEK RANCH. Location: 18 miles from Encampment, Wyoming; 65 miles west of Laramie. Take Union Pacific to Laramie or Rawlins. Season June 15 to September 5.

Accommodations: For thirty guests in main lodge with four bedrooms and connecting baths; ten double cabins. Private baths.

Activities: Riding, fishing, swimming, dancing, rodeos, moonlight rides and picnics. Big game hunting in season.

Rates: On request to J. O. Low, Jr., French Creek Ranch, Saratoga, Wyo. References exchanged.

H BAR V RANCH. Location: 58 miles northwest of Medicine Bow, Wyoming. Ranch car meets guests at Laramie by appointment. 112 miles northwest of Laramie. Season June 1 to November 1.

Accommodations: Main ranch house with lounge. Attractively furnished bedrooms. Running water, electric lights, recreation hall; cabins with living rooms and shower. For 16 guests.

Activities: Riding, participation in cattle round-ups and calf branding, rodeos, fishing, camping trips, moonlight rides and suppers, dancing, ping pong, shuffleboard, horseshoes, deck and tether tennis, soft ball. Sightseeing.

H-V



Rates: On request. For information and reservations write Bob and Kay Powell, H Bar V Ranch, Coldspring Road, Douglas, Wyoming.

MEDICINE BOW LODGE. Location: In the heart of the Snowy Range Mountains, 55 miles south of Rawlins, Wyoming. Take Union Pacific to Rawlins or Laramie, where ranch car will meet guests by appointment.

Accommodations: For 30 people in modern guest cottages with central bath facilities. Season, June 1 to November 1.

Activities: Riding, fishing, hunting, scenic trips, square dancing, special movies every night.

Rates: \$12.50 per person per day, American plan. Special Family rates. Write Leland Cox, Box 188, Saratoga, Wyoming.

REMOUNT RANCH. Location: 23 miles west of Cheyenne, near Granite Canyon. Setting for Mary O'Hara's novels "My Friend Flicka" and "Thunderhead". Take Union Pacific to Cheyenne where ranch car meets guests by appointment. Elevation 7,500 feet.

Accommodations: For 18 guests. Individual cabins, with tile bath, shower and fireplace, free radio. Central dining room and bar. May 15 to October 15.

Activities: Riding, fishing and hiking, ranch activities, bar and lounge.

Rates: On request to Remount Ranch, P. O. Box 536, Cheyenne, Wyo.

SIERRA MADRE RANCH. Location: Encampment, Wyoming, 80 miles south of Laramie, Wyoming. Ranch car will meet guests by appointment at either Laramie or Rawlins, Wyoming, both on Union Pacific main line. Season, May 15 to November 1.

Accommodations: For 25 people in log cabins, with central bath house. Meals in main lodge.

Activities: Hunting, fishing, horseback riding. Special pack trips to old mines, Indian camps and ghost towns.

Rates: \$75.00 per week per person. Family rates. For information, write Roger Lange, Encampment, Wyoming.

WATER VALLEY RANCH. Location: Nine miles south of Encampment, Wyoming, 65 miles south of Rawlins, Wyoming, on Union Pacific, where ranch car meets guests by appointment. Season June 15 to September 15. Elevation 7,500 feet. Children welcome.

Accommodations: For 20 people in native log buildings, conforming to modern standards. A selection of cabins, lodge house or main ranch house, to suit every taste. Jeeps and autos for rent.

Activities: Riding, fishing, boating, hiking, rodeos, pack trips, big game hunting in season and usual ranch life activities.

Rates: American plan, including horse, \$70.00 per week and up. Special family rates on request. For reservations and information write Brooke B. Burnham, Water Valley Ranch, Box 301-U, Encampment, Wyoming. References exchanged. Phone 8-2651. Winter address, 201 Summit Blvd., Englewood, Colorado.

WOODEN SHOE RANCH. Location: 20 miles west of Laramie, Wyoming. Altitude 7,000 feet. Take Union Pacific to Laramie, where guests are met by arrangement. June 1 to October 1.

Accommodations: For 35 people in lodge and cabins.

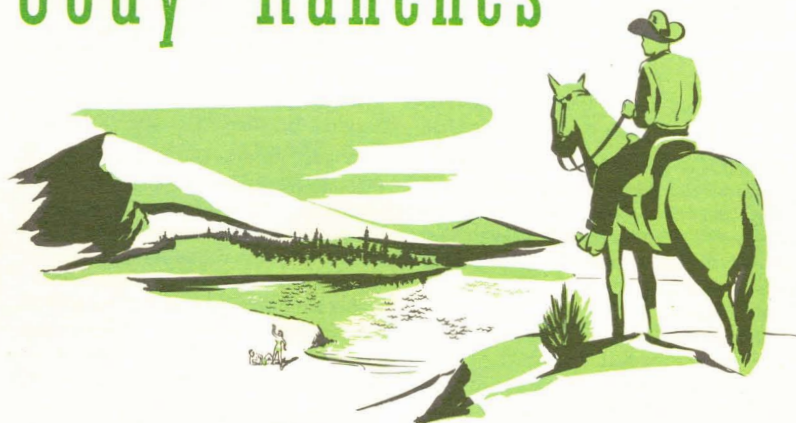
Activities: Riding, shooting, hiking, fishing, moonlight hay rides, breakfast steak rides, rodeos, Frontier Rodeo Trek.

Rates: American. Write Oscar Marsh, The Wooden Shoe Ranch, Laramie, Wyoming.





Cody Ranches



While not directly served by Union Pacific, the following recommended Dude Ranches are located immediately adjacent to the Jackson Hole country, and can be reached by Union Pacific Railroad to West Yellowstone, Montana, or Victor, Idaho, thence by arrangements with specific ranch, affording you an opportunity enroute to see Yellowstone and, or, Grand Teton National Parks.

CIRCLE H RANCH. Location: Thirty miles north-west of Cody, Wyoming. Take Union Pacific to West Yellowstone, Montana, where guests are met by arrangement. An operating and producing cattle ranch. Elevation 6,300 feet.

Accommodations: For 14 people in modern log cabins. Open June through November.

Activities: Riding, fishing, hiking, ranch activity. Big game hunting in season.

Rates: American Plan. \$85.00 to \$95.00 per person per week. Write M. E. Hall, Circle H Ranch, Wapiti, Wyoming.

DEER CREEK RANCH. Location: Valley, Wyoming, fifty miles from Cody. Take Union Pacific to West Yellowstone, Montana, where ranch car meets guests by arrangement. Elevation 6,800 feet.

Accommodations: For 18 people in

single and double log cabins, some with private baths and living rooms.

Activities: Riding, fishing, swimming, pack trips. Season, through September.

Rates: American plan. Special family rates. Write Hope Williams Read, Deer Creek Ranch, Valley, Wyoming. Winter address, 125 East 72nd Street, New York.

K BAR Z RANCH. Location: In the Shoshone National Forest, 56 miles northwest of Cody, Wyoming. Take Union Pacific to Victor, Idaho or West Yellowstone, Montana, where guests are met by appointment. Elevation 6,100 feet.

Accommodations: For 25 guests in individual cabins, all with private bath and fireplace. Meals are served family style in the dining room. Season: May through November.



Activities: Riding, boating, fishing, pack trips, hunting, mountain climbing, and guided tours to Yellowstone National Park by ranch car.

Rates: On request to L. D. Frome, K BAR Z RANCH, Painter Route, Cody, Wyoming. Winter address, L. D. Frome, 137 East 4th North, Provo, Utah.

RIMROCK RANCH: Location: In the beautiful Shoshone National Forest half way between Cody, Wyoming and Yellowstone National Park. Take Union Pacific to Victor, Idaho or West Yellowstone, Montana, where guests are met by arrangement.

Accommodations: For twenty-five guests in individual modern log cabins, some with fireplaces. Meals served ranch style in central lodge dining room.

Activities: Trail riding on gentle horses over mountain trails, with competent guides. Mountain climbing, boating, lake and stream trout fishing, chuckwagon steak fries, weekly rodeos with guest participation, outdoor barbeques, games and dancing in main lodge. Wilderness area pack trips, special trips to Yellowstone, hunting in season.

Rates: For information, write Glenn Fales, Rimrock Ranch, Cody, Wyoming.

SIGGINS BROTHERS TRIANGLE X RANCH. Location: Near the eastern border of Yellowstone National Park. Elevation 6,500 feet. Take Union Pacific

to Victor, Idaho or West Yellowstone, Montana.

Accommodations: Informal family-style dude and operating ranch.

Activities: Riding, fishing, hunting in season.

Rates: Upon request to Don Siggins, Siggins Brothers Triangle X Ranch, Cody, Wyoming.

SUNLIGHT RANCH. Location: Forty-five miles northwest of Cody, Wyoming. Elevation 7,000 feet. Take Union Pacific to West Yellowstone, Montana, where guests are met by arrangement.

Accommodations: For 35 people in separate cabins with bath, accommodating families or groups of from one to six people. Some cabins with living rooms. Season, June 1 to October 31.

Activities: Riding, fishing, hunting, dancing, picnics and steak fries. A working ranch.

Rates: American plan. On request to Donald Snyder, Cody, Wyoming.

VALLEY RANCH. Location: In the Buffalo Bill Cody Country of Wyoming near Yellowstone and Teton Parks. Take Union Pacific to West Yellowstone, Montana, where guests are met by Ranch car for trip to Valley via the Yellowstone. Elevation 6,500 feet.

Accommodations: For 90 people. All types of Cabins, and former private homes for large families. Valley is essentially a family ranch featuring a table suitable for children of all ages. Resident registered nurse.

Activities: Combination Ranch visit and two weeks pack trip, month of July for selected group of young people between 16 and 20 years old. Fishing, swimming, all-day picnic rides, motor trips, tennis and square dances several time a week. Forty-ninth year of continuous operation as combination guest and working ranch. Season, June through September.

Rates: American plan. Write Larry Larom, Valley, Wyoming.



Montana Ranches

One may leave Salt Lake City, the hub of the vast intermountain scenic regions, in the evening and reach most of these fine ranches the next day through Union Pacific gateways of West Yellowstone and other Montana stations. Service from Chicago, or St. Louis and Kansas City via Denver, provides convenient connections at Ogden or Pocatello.



BAR N RANCH. Location: Seven miles from West Yellowstone, Montana, on Hebgen Lake and the South Fork of the Madison River. Altitude 6,700 feet. Take Union Pacific to West Yellowstone where guests are met by appointment.

Accommodations: For 26 guests — native log constructed, new, modern cabins. June to September. Excellent meals.

Activities: Fishing, private pond, boating, hunting in season. Riding and sight-seeing.

Rates: American, minimum \$9.00 per day. Address Kephart and Kephart, 1400 Girard Trust Building, Philadelphia, Pa., or from June through September, Bar N

Ranch, West Yellowstone, Montana. References exchanged.

CANYON CREEK CAMP. Location: 18 miles west of Melrose, Montana. Take Union Pacific to Butte where guests are met by appointment. Elevation 7,500. Season, June 15 through November 15.


Accommodations: For not to exceed 16 people in well-built duplex-type guest cabins, each with fireplace, dressing room and kitchenette, and living-bedroom. Central bath facilities. Superb meals served family-style in central lodge, where recreation room is also located.

Activities: Riding, fishing, trips to surrounding historic sites and to Butte,



Anaconda and other interesting towns. Big game hunting in season.


Rates: \$90.00 per person per week all-inclusive. Hunting rates — \$300.00 for 10-day hunt. For information, write Vera Schulz, Melrose, Montana.


 **COVERED WAGON RANCH.** Location: Near the Gallatin River, just four miles from the northwest corner of Yellowstone National Park. Take Union Pacific to West Yellowstone, Montana, where ranch car meets guests by appointment. Elevation 6,680 feet.

Accommodations: Modern facilities for a limited number of acceptable guests. Meals served family style.

Activities: Riding, fishing, hiking, unscheduled activities. Pack Trips. Big game hunting in season. Season, June 1 through December 1.

Rates: Upon request to V. H. Benson, Covered Wagon Ranch, Gallatin Gateway, Montana.

 **DIAMOND J RANCH.** Location: Ten miles from Ennis, Montana. Take Union Pacific to West Yellowstone, where guests are met by appointment. Elevation 6,000 feet. Season June 10 to November 30.

 Accommodations: For 35 guests in rustic log cabins with private bath and fireplace. Central recreation lounge and dining room.

Activities: Riding, swimming, fishing, dancing, picnicking, rodeos, motor sight-seeing of Yellowstone Park, cattle drives, pack trips. Big game and bird shooting in season.

Rates: Upon request. For information or reservations write Elliott Redman, Diamond J Ranch, Ennis, Montana.

 **ELKHORN HOT SPRINGS.** Location: 40 miles west of Dillon, Montana. Take

Union Pacific to Dillon, where ranch car meets guests by appointment. Season June 20 to September 15. Alt. 7,500 feet.

Accommodations: Rustic Lodge contains eleven guest rooms. Housekeeping log cabins completely furnished, accommodating from two to ten persons each.

Activities: Bathing in natural hot non-mineral springs pools. Riding, hiking, fishing. Playground for children.

Rates: American plan, all inclusive, \$90.00 per week per person, European and family rates upon request. Meals in lodge. For further information or reservations write C. W. Haight, Jr., Polaris, Montana.

ELKHORN RANCH. Location: 32 miles from West Yellowstone, Montana. Elevation 7,000 feet. Take Union Pacific to West Yellowstone where ranch car meets guests by appointment. Season June 1 to October 1.

Accommodations: For 50 guests. Family cabins, one to three rooms, with private bath and sitting room.

Activities: Riding, pack trips, fishing, target practice, swimming.

Rates: On application. References exchanged. For information or reservations write Mrs. Ernest Miller, Elkhorn Ranch, Bozeman, Montana or Elkhorn Ranch, Sasabe Star Route, Tucson, Arizona, during winter.

LONE MOUNTAIN RANCH. Location: In beautiful Gallatin Canyon, 45 miles from West Yellowstone, Montana. Elevation 6,800 feet. Union Pacific to West Yellowstone, where ranch car meets guests by appointment. Season, June 15 to October 15. (Hunting, October 1 to November 30).

Accommodations: Family cabins, one to three rooms, with private baths, most with fire-place. Built of native log and stone. Planned meals, family style.

Activities: Riding, fishing, pack trips, sight-seeing, ranch activities.

Rates: On application to Jack and Elaine Hume, Lone Mountain Ranch, Gallatin Gateway, Montana.

MADISON FORK RANCH. Location: In western Montana, ideally located on the South fork of the Madison River. Take Union Pacific to West Yellowstone, Montana, where ranch car meets guests by appointment.

Accommodations: For a limited number of guests in log buildings, modern equipment.

Activities: Riding, ranch activities, fishing and hunting in season.

Rates: On request to G. Howland Meyer, Madison Fork Ranch, West Yellowstone, Montana.

NINE QUARTER CIRCLE RANCH. Location: 33 miles north of West Yellowstone, Montana, and 7 miles from the NW corner of Yellowstone National Park. Take Union Pacific to West Yellowstone, Montana, where guests are met by appointment. Elevation 7,000 feet. Season June 1 to Sept. 25. Hunting season Oct. 5 to Dec. 1.

Accommodations: 65 guests at one time, all in rustic log cabins—many with private bath. Central lodge for lounging and recreation. Separate dining room, meals family style.

Activities: Riding, fishing, barbecues, branding and cattle round-ups, dances and parties, amateur rodeos, trap shooting, ping pong, pack trips, private air strip. Big game hunting in season. Planned activities for children with baby wranglers for "wee tots."

Rates: American plan, \$80.00 to \$105.00 per week depending on type of accommodations, everything included. Special rates for families. Other rates on application. Reservations required. Write

Howard Kelsey, Nine Quarter Circle Ranch, Gallatin Gateway, Montana.

PARADE REST RANCH. Location: 10 miles north of West Yellowstone, Montana, on Hebgen Lake road. Guests arriving on Union Pacific met by appointment, without charge.

Accommodations: For 20 guests in log cabins. May 20 through November 15.

Activities: Trout fishing, riding, swimming in Hebgen Lake, boating, pack trips. Ducks, geese and big game hunting in season. Sightseeing, camping.

Rates: Upon request. References exchanged. For information or reservations write or wire Mr. and Mrs. Wells Morris, Jr., West Yellowstone, Montana.

ROCKIN' HORSE RANCH: Location: Along the famous Gallatin River, 21 miles north of Yellowstone National Park. Elevation 6,200 feet. Take Union Pacific to West Yellowstone, Montana, where guests are met by arrangement.

Accommodations: In spacious cabins. Meals served in main dining room.

Activities: Riding, fishing, hiking, pack trips, trap shooting, station wagon trips to Yellowstone Park, and Old Virginia City — the home of the Vigilantes.

Rates: Upon request to Herman and Barbara Hintzpeter, Rockin' Horse Ranch, Gallatin Gateway, Montana.

SEVEN L RANCH. Location: 23 miles from Monida, Montana. Take Union Pacific to Monida, where guests are met without charge. Operating stock ranch.

Accommodations: For ten guests in main ranch house and modern cabins. June 1 to November 1.

Activities: Riding, fishing, hunting in season, ranch activities.

Rates: American, including horse and guide, \$85.00 per week. For information write June Roe Forsythe, 7L Ranch, Monida, Montana.



7L.



320 RANCH. Location: In the scenic Gallatin Canyon, 35 miles north of West Yellowstone, Mont. where Union Pacific guests are met with ranch car by appointment. Elevation 6,500 feet.

Accommodations: For 30 guests in log cabins, some with bath. Also central bath house, with tubs and showers. Food served family-style in main dining room.

Activities: Riding, lake and stream fishing, packtrips into the wilderness of Yellowstone National Park and into Gallatin National Forest. Rodeos, square dancing, big game hunting in season.

Rates: On request to James R. Goodrich, 320 Ranch, Gallatin Gateway, Montana.

WATKINS CREEK RANCH. Location: 18 miles from West Yellowstone, Montana, on the shores of Hebgen Lake. Take Union Pacific to West Yellowstone where guests are met by appointment, without charge.

Accommodations: For 28 guests in individual modern guest cabins, either twin or double beds; each with fireplace and shower.

Activities: Riding, lake and stream fishing, boating, swimming, water skiing, and ranch activities. Season June 1 to September 15. A cattle ranch.

Rates: \$50.00 to \$115.00. Reservations required. Wire or write to J. K. Smith, Jr., Watkins Creek Ranch, P. O. Box "W", West Yellowstone, Montana. Winter address until May 15: 2312 Preston Street, Salt Lake City, Utah.



Idaho Ranches

While Idahoans, for the most part, devote their lands to sheep grazing and fruit ranching, there are many excellent guest ranches. They are scattered throughout the State, but none is far from Union Pacific lines.



ELK CREEK RANCH. Location: In beautiful eastern Idaho, near the west entrance to Yellowstone National Park. Take Union Pacific to Trude, Idaho, where guests are met by arrangement. Season, June 3 to October 31.

Accommodations: In cabins and in main lodge.

Activities: Riding with guide. Fishing in private lake and in scores of nearby lakes and streams.

Rates: American plan. Write Vern Zollinger, Elk Creek Ranch, Island Park, Idaho.

ELK HEAD RANCH. Location: Elk City, Idaho, sixty miles east of Grangeville, Idaho. Elevation 4,200 feet. Take Union Pacific to Lewiston, Idaho, where ranch car meets guests by appointment. Season June 1, to November 15.

Accommodations: For 25 guests. One central lodge, cabins and tent-houses, with running water.

Activities: Motor trips, pack trips, riding, fishing, swimming, hiking and tennis. Specializing in big game hunting in season; licensed guides.

Rates: On application. For information write Gertrude Maxwell, Elk Head Ranch, Elk City, Idaho.

FLYING B RANCH. Location: On the Middle Fork of the Salmon River, 125 miles north of Boise, Idaho. Elevation 3,700 feet. Take Union Pacific to Boise or Sun Valley, where guests are met by arrangement and flown into ranch.

Accommodations: For 36 guests in Lodge and cabins. All beds have electric blankets. Season: April 1 to Dec. 15.

Activities: Trail riding, hunting, fishing, boat trips on the Salmon River. Hunting for goat, sheep and bear. Facilities available for sales meetings.

Rates: American and European on request to John B. Hall, P. O. Box 1825, Boise, Idaho.

MOOSE CREEK RANCH. Location: One hundred and thirty miles east of Lewiston, Idaho; in the primitive area of North Central Idaho. Take Union Pacific to Lewiston, then by air, no roads to Moose Creek.

Time by air — less than one hour.

Accommodations: For 25 guests in one central lodge with all modern conveniences, including electric lights, hot and cold water. Season: June 4 to Nov. 30.

Activities: Pack trips, big game hunting in season, licensed guides, fishing, delightful area for camera fans.

Rates: Upon request. For accommodations, and air service from Lewiston, write Paul Christman, manager Moose Creek Ranch, Orofino Airport, Orofino, Idaho.

REDFISH LAKE LODGE. Location: 62 miles from Ketchum, Idaho, and 120 miles from Shoshone, Idaho. Take Union Pacific to Shoshone, Idaho, or Ketchum, thence either bus or ranch car. June 1 to October 15.

Accommodations: For 50 guests. Main lodge and log cabins. Single and double rooms in main lodge with hot and cold water, bath rooms separate. In cabins there are bath, bedroom and living room.

Activities: Fishing, swimming, boating and camping parties, pack trips. Big game hunting in season.

Rates: On application. For information or reservations write P. F. Maughan, Mgr., Red Fish Lake Lodge, Stanley, Idaho. Winter address, Route 1, Meridian, Idaho.

ROBINSON BAR RANCH. Location: 80 miles from Ketchum or Mackay, Idaho. Take Union Pacific to Ketchum; guests are met by arrangement. Elevation 6,000 feet.

Accommodations: For 50 guests. Rustic log hotel and heated cabins. Season, June 1 to October 15.

Activities: Riding, packing, fishing, swimming in hot water swimming pools, badminton, horseshoe pitching and croquet. Elk and deer hunting parties.

Rates: On application. Write Beulah Reeves, Robinson Bar Ranch, Clayton, Idaho. Winter address, Apt. 66, 735 South East 41st Ave., Portland, Oregon.

SAWTOOTH LODGE. Location: On the South Fork of the Payette River, at the feet of the famous Sawtooth Range in the Idaho wilderness area. 27 miles above Lowman, Idaho. Take Union Pacific to Boise, Idaho, where guests are met by appointment. Elevation 5,000 feet. Season, June 1 through November 15.

Accommodations: For 20 guests in single and double rustic log cabins, with running water.

Activities: Riding, fishing, sightseeing on horseback. Guides. Big game hunting in season.

Rates: American and European plan. Rates for children under 12. Boys camping ages, 12-17. On request to Mr. Albert Lockett, 1403 East Bannock, Boise, Idaho.

SHORE LODGE. Location: On beautiful Payette Lake, at McCall, Idaho. Take Union Pacific to Boise or Weiser, Idaho, thence by bus or plane. Or all-day trip from Nampa on Union Pacific mixed train through beautiful primitive canyon country. Elevation 5,000 feet.

Accommodations: For 125 people in modern lodge. Open all year.

Activities: Horseback riding, fishing, swimming, boating, water skiing, speed boating, trap shooting, golfing, snow skiing, ski lift. Big game hunting in Idaho's primitive area.

Rates: European, October to May, \$6.00 to \$12.00. May to October, \$10.00 to \$17.00. Children under 14 free from October to May. Write Perry Bruce, manager, Shore Lodge, McCall, Idaho.

SLASH E RANCH. Location: On Targhee Creek in eastern Idaho. Take Union Pacific to Trude, Idaho, where guests are met by arrangement.

Accommodations: In modern one and two-room cabins, all kitchen-equipped.

Activities: Riding, fishing, boating.

Rates: European plan. Write Cleo Frazier, Slash E Ranch, Island Park, Idaho.

SULPHUR CREEK DUDE RANCH. Location: 80 air miles north and east of Boise, Idaho, in the heart of the Primitive Area of Idaho. Take Union Pacific to Boise or Sun Valley where arrangements made to fly into Ranch (40 minutes from Boise, 40 minutes from Hailey).

Accommodations: Completely modern rustic log cabins accommodating from two, to a large one for eight. Limit of 40 guests. Lodge with lobby and dining room, ranch style. June 15 to November 15.

Activities: Pack trips, trout and salmon

fishing, big game hunting in season — elk, deer, bear. Boat trips down Middle Fork of Salmon River.

Rates: Upon request. Write Marvin E. Hornback, P. O. Box 393, Boise, Idaho.

WILD ROSE RANCH. Location: 18 miles from West Yellowstone, Montana, on Henry's Lake, Idaho. Take Union Pacific to West Yellowstone where guests are met without charge. Elevation 7,000 feet.

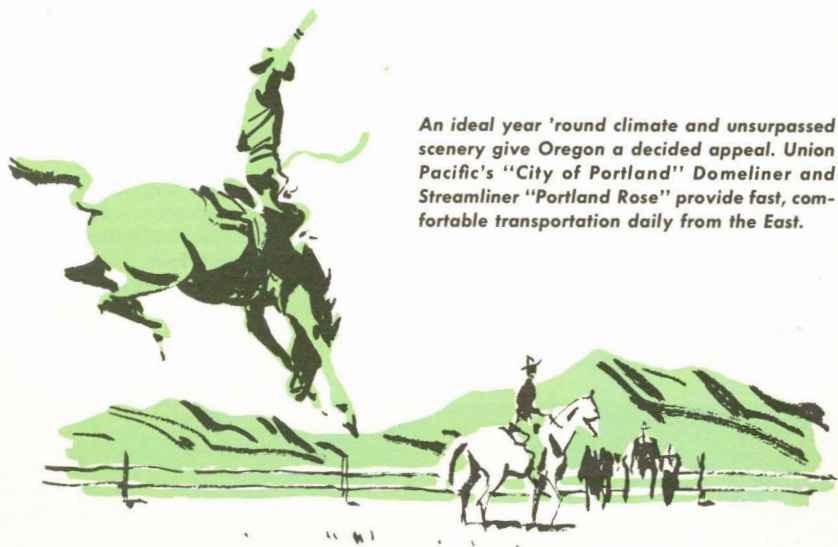
Accommodations: For 60 guests in modern cabins. Central dining room and recreation room. Season, June 1 to November 1.

Activities: Horseback riding, fishing in stream or lake, pack trips, hiking and guide service. Big game hunting in season. (All hunting by reservation only).

Rates: On request to Charles G. Day, Wild Rose Ranch, Henry's Lake, Idaho, — winter address, Charles G. Day, 120 Owens Drive, Santa Ana, California.



Oregon Ranches



An ideal year 'round climate and unsurpassed scenery give Oregon a decided appeal. Union Pacific's "City of Portland" Domeliner and Streamliner "Portland Rose" provide fast, comfortable transportation daily from the East.

ARROWHEAD RANCH. Location: 4 miles south of Enterprise, Oregon. Take Union Pacific to LaGrande or Pendleton, where guests are met by advance arrangement. Season from May 1 to November 15 (or end of hunting season).

Accommodations: For 12 people in modern cottages, each room having view of the beautiful Wallowa Mountains. Meals served in the Chuck Room which

has combination fire place and barbecue grill, and bar facilities.

Activities: Riding, lake and stream fishing, swimming, rodeos, operating ranch activities. Pheasant, duck, deer and elk hunting in season.

Rates: American, from \$15.00 per day per person. Children under 12, \$10.00 per day. Nominal charge for horses. Write Billie and Jay Langston, Arrowhead Ranch, Enterprise, Oregon.



BAR M RANCH. Location: Blue Mountains, 31 miles east of Pendleton; 45 miles south of Walla Walla, Washington. Elevation 2,161 feet. Take Union Pacific train to Pendleton, or Walla Walla where guests are met by appointment. Season: June 1 to September 30. Hunting season through November.

Accommodations: For 30 guests. Eight rooms in ranch house, double and twin beds, baths separate. Two modern cabins accommodating up to 8 persons each. Large house with private bath and 1 to 3 room suites.

Activities: Warm water swimming, riding, fishing, pack trips, hunting, folk dancing and evening entertainment. Weekly camping trips at no extra cost.

Rates: American, \$80.00 to \$90.00 per week. Also family rates. For reservation or information write Howard P. Baker, Bar M Ranch, P. O. Gibbon, Oregon.

RED'S WALLOWA HORSE RANCH.

Location: In Oregon's primitive area, reached by no roads. Take Union Pacific to LaGrande, Oregon, thence 24 miles by motor and 8 miles by saddle and pack horse; or take Union Pacific to LaGrande or Baker thence air taxi to ranch. Season June 15 to November 15. Elevation 3,600 feet.

Accommodations: For 18 guests in cabins accommodating up to four persons.

Activities: Fishing in streams or lakes, hunting of all kinds with experienced guides, pack trips, swimming. Boys camp separate from the main ranch.

Rates: American plan. \$15.00 per day and up. For reservations write Red's Wallowa Horse Ranch, Reservation Center, 714 SW Washington St., Portland, Oregon, or Box 1, LaGrande, Oregon.

Wallowa Lake in the Oregon "Alps".



Washington Ranches

The "Evergreen State", offering a variety of climate, is a vast playground of scenic beauty, cosmopolitan cities and hospitable people. Union Pacific trains serve much of the State.



DOUBLE K MOUNTAIN RANCH. Location: Goose Prairie, Washington, 58 miles northwest of Yakima. Take Union Pacific to Yakima or to Seattle and thence by bus to American River. Guests met by appointment without charge at both places. Elevation 3,400 ft. Open all year. Adults only during July and August.

Accommodations: For 16 in central ranch house of native stone and rough lumber, with knotty pine interior; also one cabin with fireplace and half bath, accommodates two. Three baths in Ranch House. Meals in central dining room.

Activities: Riding, fishing, swimming, pack trips; big game hunting, deer, elk

and bear, and skiing and snowshoeing in season. Cards, dancing, music, reading, all-day rides in high country.

Rates: On request to Kathryn Ker-shaw, Double K Mountain Ranch, Goose Prairie, Wash.

FLYING H GUEST RANCH. Location 25 miles from Yakima, Wash. Take Union Pacific to Yakima where guests met by appointment.

Accommodations: For 25 guests in modern cabins. Season, April 1 to December 31.

Activities: Riding, fishing, and regular ranch life. Pack trips and big game



hunting in season, with or without guides. Excellent ski trails near by.

Rates: Either American or European plan; furnished on request. Write Flying "H" Guest Ranch, Star Route, Naches, Wash.

HIDDEN VALLEY GUEST RANCH. Location: Cle Elum, Washington. Union Pacific to Yakima, Washington, where ranch car meets guests.

Accommodations: Large airy rooms with twin and double beds in main lodge and seven guest cabins. Open all year.

Activities: Riding, dancing, swimming, fishing, trail breakfasts, hay rides, ranch activities. A working ranch.

Rates: American, \$75 to \$105 per week per person, including saddle horse. Families with children welcome. Family rates on request. Write Mr. and Mrs. Art Crabtree, Hidden Valley Ranch, Cle Elum, Washington.

SKY MEADOWS GUEST RANCH. Location: Seven miles southeast of Cle Elum, Washington, perched high on the Cle Elum Ridge, overlooking the snow-capped peaks of the Cascades. Elevation, 3,000 feet. Take Union Pacific to Yakima, Washington, where ranch car meets guests without charge.

Accommodations: For 20 to 25 people in main Lodge and guest cabins of cedar log construction. Large airy rooms with twin and double beds, private and shared baths. King-sized fireplace in Lodge. Open all year.

Activities: Riding, fishing, trail breakfasts, hay rides, dancing, ranch activities. Winter sports in January and February.

Rates: American plan including saddle horses, \$65.00 to \$100.00 per person per week. Families with children welcome—family rates upon request. Write Tom and Nita Whited, Cle Elum, Washington.

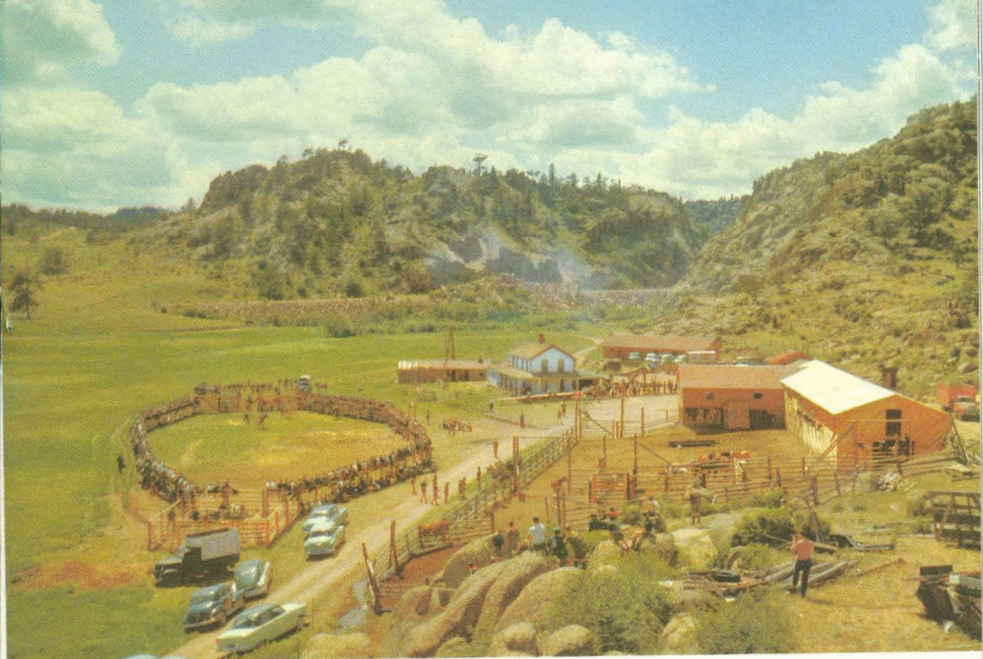




30

Dude Ranches provide sport, fun .





. . and relaxation 'round-the-clock.

31





Colorado Ranches

The Union Pacific-Milwaukee Road Domeliner "City of Denver" offers luxurious overnight service every day between Chicago and Denver. From the South and Southeast, and from the West, the Union Pacific-Wabash fast Domeliner "City of St. Louis" brings the Colorado ranches even closer than before. These beautiful trains offer completely air-conditioned coach and Pullman sleeping-car accommodations; Astra-Dome cars, and dining cars serving delicious meals.



ARNOLD WESTERN RANCH. Location: Gold Hill, Colorado, fourteen miles west of Boulder, Colorado, in beautiful Colorado Rockies. Union Pacific to Denver, thence connecting line.

Capacity: Can accommodate 30 boys and 30 girls, or a total of about 60, in fine new, modern lodge, cabins or partly wooden structures with floor and tent top, which are very popular with many boys and girls.

Activities: Ranching, camping, pack trips, rodeos, motor trips, riflery, archery, crafts, dramatics, hiking, swimming, fishing, nature crafts, astronomy, junior staff training.

Tuition: \$300 for four weeks, \$530 for eight weeks.

Address: Mr. Charles G. Arnold, Gold Hill, Colorado. Winter address: 1224

North Dearborn Parkway, Chicago 10, Illinois.

AMANI MGENI UWANDA (Harmony Guest Ranch). Location: Three miles northwest of Estes Park, Colorado. Take Union Pacific to Denver, thence Rocky Mountain Motor Co. bus to Estes Park, where guests are met by limousine. Open May 1 to October 1.

Accommodations: In detached cabins or "Bashas," for 85 guests.

Activities: Riding, swimming, fishing, hiking, photography, dancing, golf, indoor games, skiing, hunting.

Rates: For information, write S. W. Hays or Col. Richard E. Turner, Amani Mgeni Uwanda Guest Ranch, Moraine Route, Estes Park, Colorado.

BEAVER BROOK LODGE AND GUEST RANCH. Location: 27 miles west of Denver, vicinity of Mount Evans. Elevation 8,500 feet, cool, no hay fever, mosquitoes, or snakes. Take Union Pacific to Denver, our station wagon will meet train in Denver, no charge. Season opens May 15th.

Accommodations: Main lodge with comfortable lounge recreation room, dining room with picture windows and fireplace, and cozy cocktail lounge. Individual modern log cabins well spaced for privacy.

Activities: Horseback riding, experienced wrangler guiding; steak fries, sunrise breakfast rides, fishing, golfing, swimming, square dancing, indoor and outdoor games, sight-seeing trips to nearby gold mining area and ghost towns. Big game hunting in season.

Rates: A moderate priced guest ranch for the entire family. Modified American plan. Write for booklet and rates to Beaver Brook Lodge and Guest Ranch, Route 1, Evergreen, Colorado.

BEAVER'S S-V GUEST RANCH. Location: In Arapahoe National Forest, 70 miles west of Denver. Take Union Pacific to Denver, thence D&RGW to Winter Park where guests are met without charge. Season June 7 to September 15.

Accommodations: For 80 guests in modern lodges and cottages, most with tile baths.

Activities: 50 horses for riding. Lake and river fishing, boating, swimming in heated filtered pool, hay rides, steak fries, scenic motor trips, evening entertainment. Children's program and counselor.

Rates: American plan, \$89.00 to \$115.00, including use of horses, etc. Special family rates. Write Beaver's S-V Guest Ranch, Winter Park 11, Colorado.

BRINWOOD RANCH. Location: In Rocky Mountain National Park, just 10 minutes from Estes Park Village. Take Union Pacific to Denver, thence bus to Estes Park, where guests are met without charge. Elevation 8,000 feet.

Accommodations: Clean and modern for 90 people.

Activities: Riding, fishing, steak fries, square dancing, etc. Season June 10 to September 10.

Rates: On request. Write Fred Stefens, Box 100, Estes Park, Colorado. Winter address, 330 Cherry St., Denver, Colorado.

BROCKHURST DUDE RANCH. Location: Fifteen miles west of Colorado Springs. Take Union Pacific to Denver, thence connecting train service to Colorado Springs where guests are met by appointment. Elevation 8,000 feet.

Accommodations: For 20 guests in ranch lodge and log cabins with shower, lavatory and toilet in each. Meals family style. May 15 to October 1.

Activities: Riding, picnics, pack trips.

Rates: American, includes assigned horse, \$84.00 per week single. Address H. W. Brockhurst, Green Mountain Falls, Colorado.

BROOK FOREST INN. Location: 33 miles southwest of Denver. Elevation 8,000 feet. Take Union Pacific to Denver, thence by motor. Season, May 1 to September 15.

Accommodations: Modern in main lodge and cottages. Alpine cocktail lounge.

Activities: Horseback riding, tennis, archery, moonlight rides, steak fries, barbeques, dancing, fishing and boating on private lake.

Rates: On request to Manager, Brook Forest Inn, Evergreen, Colorado.



BUCKHORN LODGE GUEST RANCH.

Location: 100 miles west of Denver, on the Colorado River. Elevation 7,500 feet. Take Union Pacific to Denver, thence connecting carrier to Parshall or Granby, Colorado. Ranch Wagon meets guests without charge. Season, May 15 to October 15.

Accommodations: For 45 people in rustic-type cabins with all modern conveniences, with special family accommodations. Recreational building for dancing, veranda and cocktail lounge.

Activities: Riding, fishing, swimming, steak fries, big game hunting. Recreation room activities. River-bank campfire song fests.

Rates: Moderate plan for entire family. Special rates for children. Write Rudy and Mabel Menghini, Buckhorn Lodge, Parshall, Colorado.

BUCKHORN MOUNTAIN GUEST

RANCH. Location: 22 miles west of Fort Collins, Colorado. Elevation 8,200 feet. Take Union Pacific to La Salle, Colo., where ranch car meets guests without charge.

Accommodations: In duplex guest cabins, two rooms, designed for 1 to 4 persons, each with fireplace, private bath. 40-50 guests. Season, June 1 through December.

Activities: Riding, hiking, fishing trips, day or overnight pack trips, archery, sightseeing trips to nearby points; moonlight hayrides, campfire steak fries, song fests; dancing, ping-pong, badminton, horse-shoes.

Rates: American plan, include everything. Special rates for children under twelve. Rates on application to Buckhorn Mountain Guest Ranch, Box 766, Ft. Collins, Colorado.

CAMP CHIEF OURAY. Location: High in the Rockies on the Colorado River between Granby and Grand Lake. Buildings include recreation hall, dining hall, bath houses, craft shop, printing shop, photo shop, infirmary and 18 sleeping cabins. Capacity — 140 boys, 8 to 16 years of age.

Activities: Include swimming, boating, hiking, trips, sports, riflery, archery, music, campcraft, nature lore, camp fires. Well trained horses and riding instruction. Competent leadership.

Season is divided into 5 periods of two weeks each. Weekly rate \$42.50. Dates — June 15 to August 24.

For detailed information write Mr. Dwight Johnson, Director, YMCA, 16th Ave. & Lincoln St., Denver, Colo.

CAMP SHOSHONI CAMP FOR GIRLS. Location: 2 miles from Rollinsville, Colorado, 42 miles northwest of Denver. Take Union Pacific to Denver, thence bus to Rollinsville, where guests are met by appointment.

Description: A private horseback riding camp for girls 8 to 16 where a happy carefree summer that is educational, interesting and constructive may be spent in this unspoiled trail country.

Accommodations: For 90 girls. Main lodge with all modern conveniences; dining room, oak dancing floor, library, piano, radio; rustic log cabins accommodating 4 to 8 girls each. Registered nurse at camp.

Activities: Under expert supervision of experienced instructors and counselors. Horseback riding taught, both English and western-style; hiking, swimming in concrete pool, canoeing, tennis, archery, riflery, dancing, dramatics, arts and crafts, ball games, camp craft, camping-out, pack and picnic trips.

Rates: On application. For information and booklet, also folder on Post Season Dude Ranch for adults, address Mr. and Mrs. Edward C. Barnhart, 2005 Glenwood Drive, Boulder, Colorado.

CHELEY COLORADO CAMPS. Private summer camps for boys and girls. Location: Six miles from Estes Park, Colorado. Altitude 8,000 feet. Take Union Pacific to Denver, where campers are met.

Accommodations: Four separate camps for boys by age grouping. Four separate camps for girls by age grouping. Established 1921. Recognized as one of the nation's outstanding private summer camps. Season: June 23 to August 17.

Activities: Horseback riding, hiking, pack trips, woodcraft, tennis, archery, riflery, sports and games and hand-craft.

Rates: Most of groups come for full eight week season. Some space available for one-month reservation. Supervised travel groups from key cities. For more complete information and illustrated catalog, write J. A. Cheley, Director, 601 Steele Street, Denver 6, Colorado.

CHEROKEE DUDE RANCH. Location: 100 miles northwest of Denver in the Roosevelt National Forest. Take Union Pacific to Laramie, Wyoming, or to Ft. Collins, Colorado. Ranch station wagon meets guests by arrangement. Elevation 7,200 feet.

Accommodations: For 45 guests. Main lodge with or without bath, cabins, private baths and showers. Season May 25 to November 1.

Activities: Riding, fishing, tennis, billiards, dancing, steak fries, sunrise breakfast and weekly sightseeing trips. Deer season in October.

Rates: American plan, unlimited riding, \$70.00 and up per week. Rates for children under 12. For further information write Herbert S. Ford, Livermore, Colorado.

C LAZY U RANCH. Location: Granby, Colorado. Elevation 8,100 feet. Take Union Pacific to Denver, thence D&RGW to Granby where guests are met without charge.

Accommodations: For 75 guests. New main lodge; individual cabins with tiled



bathrooms. New recreation building. Special accommodations for families; supervised program of activities for children 5 to 12 from sunup until bedtime. Fresh fruit in each room every day. Gourmet's food.

Season: May 15 to September 30 and December 1 to April 15.

Activities: Riding, fishing, swimming in heated filtered pool, shuffleboard, ping pong, dancing, barbecues, working ranch activities. All indoor games. Winter sports and skiing at Winter Park.

Rates: \$105.00 per week and up. All inclusive. For further information write C Lazy U Ranch, Granby, Colorado.

✓ COOL COWHAND DUDE RANCH.

Location: Green Mountain Falls, Colorado. Elevation 8,000 feet. Take Union Pacific to Denver, thence connecting service to Colorado Springs, where guests are met without charge. Season, June through September

Accommodations: For 40 people in modern private cottages and bunk-houses.

Activities: Riding, fishing, swimming, hiking, dancing, horseshoes, badminton, croquet, library.

Rates: American plan, \$75.00 to \$100.00 per person per week. Children half rate. Write Ned O'Neill, Cool Cowhand Dude Ranch, Green Mountain Falls, Colorado. Winter address, 2651 University Avenue, St. Paul 14, Minnesota.

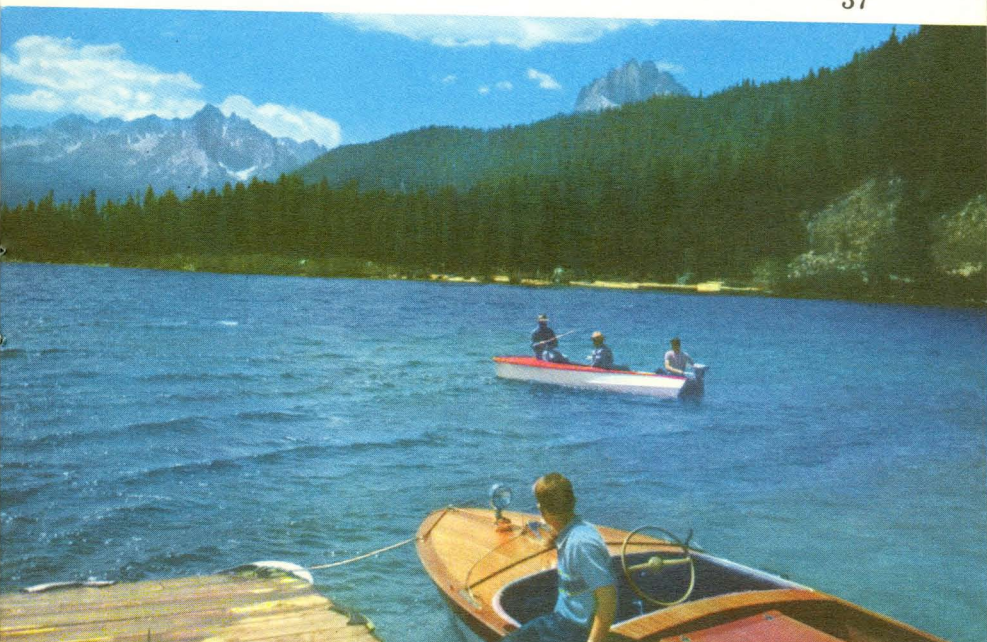
COULTER LAKE GUEST RANCH.

Location: White River National Forest, Rifle, Colorado. Take Union Pacific to Denver, thence D&RGW to Rifle, where guests are met without charge.

Accommodations: For 20 people. Lodge, modern cabins with private baths. June 1 to October 31.

Activities: Riding, fishing, swimming, boating, round-up, ranch activities, big game hunting in season.

Rates: American, all inclusive, \$70.00 per week. Pack trips, \$7.50 per day. Write C. F. Coulter, P. O. Box 1197, Rifle, Colorado.



C V BAR GUEST RANCH. Location: 12 miles north of Rifle, Colorado. Take Union Pacific to Denver, thence D&R GW to Glenwood Springs or Rifle where ranch car meets guests by appointment. Season May 15 to November 1.

Accommodations: For 30 guests in modern knotty pine finished cabins, each with private bath.

Activities: Horseback riding, fishing, riding instructions, jeep trips, pack trips, ranch activities. Heated swimming pool. Big game hunting in season. Working and guest ranch.

Rates: American, \$70.00 and up per person per week. Write Ray R. Barlow, Manager, Rifle, Colorado.

DEVILS THUMB RANCH. Location: 72 miles west of Denver, near Fraser, Colo. Take Union Pacific to Denver, D&RGW to Fraser where ranch car meets guests

without charge. El. 8,500 feet. Season: May 15 to October 31.

Accommodations: For 20 persons in modern log cabins with private baths and in lodge. Meals served family style.

Activities: Riding, fishing, pack trips, steak fries and regular ranch life. Sight-seeing trips.

Rates: \$105 to \$115 per week, per person. Write George and Don Yager, Devils Thumb Ranch, Fraser, Colorado.

DON K RANCH. Location: 30 miles west of Pueblo, Colorado. Vast acreage surrounded by a quarter million acres of San Isabel Forest. Elevation, 6,000 feet. Take Union Pacific to Denver, thence connecting line. Guests met at Pueblo without charge.

Accommodations: For 40 to 50 people. Are in a luxurious western lodge and guest houses. Rooms are pine paneled,



beautifully furnished in western motif. Modern tiled baths.

Activities: Swimming pool, all ranch activities, refreshment lounge. Open May 1 to November 1.

Rates: Upon request. Write The Don K Ranch, Siloam Star Route, Pueblo, Colorado, or H. R. Koenig, Title Guaranty Bldg., 706 Chestnut St., St. Louis, Missouri.

DROWSY WATER RANCH. Location: 6 miles west of Granby, Colorado. Altitude 8,300 feet. Take Union Pacific to Denver, thence D&RGW to Granby.

Accommodations: In main lodge, nine cabins. All with modern facilities. Electric heat in cabins, some have private living rooms. Ideal for the family vacationists. Children welcome. Season: June 1 to September 15.

Rates on request to Mrs. Dean Glessner, The Drowsy Water Ranch, Granby, Colorado.

ESTES PARK CHALET. Location: 3 miles south of Estes Park, Colorado, on South St. Vrain Highway. Take Union Pacific to Denver, thence bus. June 15 to Sept. 15.

Accommodations: For 250, all in main building. Spacious lounge and sunny dining room. Running water, bath and electric lights.

Activities: Riding, fishing and hiking. Pack trips arranged. Swimming in heated outdoor pool.

Rates: Write to I. L. James, Rocky Mtn. Motor Co., Box 1228, Denver, Colorado.

FALL RIVER LODGE AND RANCH.

Location: Seven miles west of Estes Park Village within Rocky Mountain National Park. Take Union Pacific to Denver, thence Rocky Mountain Motor coach to Estes Park, where guests are met by appointment.

Activities: Riding, fishing, golf, tennis, bowling, swimming, boating, mountain

climbing and a supervised children's program.

Rates: American plan from \$8.00 to \$18.00 per person per day. Write J. R. McKelvey, Fall River Lodge and Ranch, Estes Park, Colorado.

FOCUS RANCH. Location: Columbine, Colorado. Take Union Pacific to Rawlins, Wyoming; or Denver, thence D&RGW to Steamboat Springs, Colo. Guests met by appointment in Rawlins or Steamboat Springs. Elevation 6,851 feet.

Accommodations: For 28 guests in ranch house and cabins, all with bath. Season, May 1 to November 1.

Activities: Riding, fishing, swimming, pack trips, ranch activities. Steak and fish fries, rodeos, big game hunting in season.

Rates: Upon request to J. B. Temple, Slater, Colorado.

GREYSTONE RANCH. Location: Evergreen, Colorado, 33 miles southwest of Denver. Elevation 7,500 ft. Take Union Pacific to Denver where ranch car meets by appointment. Open all year.

Accommodations: In native stone and wood Manor House and three guest houses. Fireplaces, private baths. Dining terrace and cocktail lounge.

Activities: Riding, hiking, fishing, golf, badminton, ping pong, moonlight picnics, pack trips.

Rates: \$40.00 and up weekly, European. \$75.00 and up weekly, American. Housekeeping units, \$75.00 and up weekly. Family rates. Write W. R. Sandifer, Greystone Ranch, Evergreen, Colo.

LAKE TRAIL GUEST RANCH. Location: Two miles from Steamboat Springs, Colorado. Take Union Pacific to Denver, thence D&RGW to Steamboat Springs where guests are met without charge. Season: June 15 to Sept. 7.

Accommodations: For 25 guests in main lodge and modern rustic cabins.

HT

Activities: Fishing, hiking, trail riding, pack trips, swimming and hot mineral baths near by, lazy loafing.

Rates: American, weekly \$72.00 per person. Family rates. Write The Greears, Lake Trail Guest Ranch, Steamboat Springs, Colorado.

McGRAW RANCH. Location: 6 miles from Estes Park Village; 76 miles from Denver. Elevation 7,800 feet. Take Union Pacific to Denver, thence Rocky Mountain Motor Co. bus.

Accommodations: For 32 guests. Modern ranch house and cabins, with baths, hot and cold water and gas heat. June 15 to October 1.

Activities: Riding, fishing, hiking, golf, tennis, ping pong, pack trips, steak fries, breakfast rides, square dancing and regular ranch life.

Rates: American plan, \$75.00 per week per person and up. Family rates. For information write McGraw Ranch, Box 995, Estes Park, Colorado.

MEADOWDALE GUEST RANCH. Location: A 10,000 acre working cattle ranch in Roosevelt National Forest. Altitude 7500 feet. Take Union Pacific to Denver, thence Rocky Mountain Motor Coach to Estes Park, where guests are met by appointment.

Accommodations: For 50 to 60 guests in large modern rooms in ranch house or cabins. Excellent ranch style food.

Activities: Trail rides, pack trips, fishing, badminton, horse shoes, steak fries, breakfast rides. Guests may join in round-up and branding if they desire. Big game hunting in season.

Rates: American Plan \$70 to \$105 per person per week. Family rates on request. Horses extra. Write Bob Isbell, Manager, P. O. Box 1243, Estes Park, Colorado.

NEVERSUMMER RANCH: Location: 10 miles north of Grand Lake and 37 miles west of Estes Park, Colorado, in Rocky Mountain National Park. Take

Union Pacific to Denver, thence Rocky Mountain Motor Co. bus to ranch via Estes Park, or from Denver take D&RGW to Granby, Colo., where guests are met by appointment June 15 to September 15. 9,000 feet.

Accommodations: For 50 guests. Rustic lodge; guest rooms with or without private bath. Log cabins with bath and fireplace accommodating from two to eight persons.

Activities: Riding, fishing, steak fries, wiener roasts, evening amusements, sports, hiking, dancing, pack trips, ranch activities.

Rates: American plan, on application to Mrs. John Holzwarth, Grand Lake, Colorado.

NINE QUARTER CIRCLE RANCH. Location: An operating cattle ranch six miles north of Granby, Colorado, just south of Rocky Mountain National Park. Elevation 8,000 ft. Take Union Pacific to Denver, thence D&RGW to Granby where ranch car meets guests without charge. Season, open all year.

Accommodations: European Plan only for 30 guests. Luxurious 1, 2 and 3 bedroom complete vacation homes, with all electric kitchens. Tile tub and shower baths, living rooms with fireplaces. A new idea in guest ranch for families who prefer to prepare own meals, or dine out at fine restaurants in nearby towns or resorts.

Activities: Excellent trout fishing in Colorado River running through the ranch, riding, daily supervised program for children, recreation building for games, square dancing, participation in ranch work.

Rates: (European Plan) May 15 to Nov. 1: \$75 per week per person with horse, \$60 without. Nov. 1 to May 15: \$52.50 per week per person (including horse). Rate also includes transportation to Winter Park Ski Area. Write owners Paul and Phyllis Carmichael, Star Route, Granby, Colo.



Many ranches, being home ranches open all year, are near popular ski areas, such as Winter Park, Colorado pictured here. Check individual ranch write-ups for those offering skiing.

ONAHU RANCH. Location: 5 miles north of Grand Lake, Colorado. Altitude 8,767 feet. Take Union Pacific to Denver, thence D&RGW to Granby where ranch car meets guests by appointment without charge.

Accommodations: For 30 to 35 guests. Central lodge and private cabins with bath. Season, June 1 to October 1.

Activities: Riding, fishing, boating, swimming and pack trips. Trips to Rocky Mountain National Park and Grand Lake. Rodeos.

Rates: American plan \$70.00 to \$90.00 per week. Family rates. Write Wilsie A. Jamison, Onahu Ranch, Grand Lake, Colorado.

PAINTED POST RANCH. Location: 60 miles south of Laramie, Wyoming, in a mountain valley surrounded by National Forest in northern Colorado. Altitude 8,500 ft. Station wagon meets Union Pacific trains in Laramie by appointment. Season: June 1 to October 1.

Accommodations: For 18 guests in deluxe modern cabins, all with private bath. Excellent meals in attractive main lodge.

Activities: Fishing in two miles of private streams and beaver ponds, horseback riding, hiking or nature walks over endless trails of the forest, steak fries, etc.

Rates: American Plan upon request to George and Alice Drake, Painted Post Ranch, Red Feather Lakes, Colorado. Winter address: 619 N. Michigan Ave., Chicago, Ill.

PATTERSON'S LOST VALLEY RANCH.

(Formerly Graham's). Location: In the Pike National Forest, near Deckers, Colorado. Take Union Pacific to Denver, thence connecting service to Colorado Springs. Ranch car will meet guests at either point by appointment. Elevation 7,000 feet.

Accommodations: For 50 guests in main lodge and all-modern cabins accommodating one to 12 people.

Activities: A working ranch, offering branding, round-up and other ranch activities in which the guests are welcome to participate. Riding, fishing, swimming in out-door heated pool, tennis, steak fries, square dancing, etc. Specially planned program for children, guided by professional supervisor. Season, June 15 to October 1. Open year round for hunting. Lion, bear, deer and big horn sheep in proper season. Licensed guides.

Rates: American plan. Rates on application to Dick Patterson, Patterson's Lost Valley Ranch, Route 2, Sedalia, Colorado.

PHANTOM VALLEY RANCH.

Location: In Rocky Mountain Nat'l Park, 12 miles north of Grand Lake, Colorado. Take Union Pacific to Denver, thence Rocky Mountain Motor Co. bus to the ranch, or D&RGW from Denver to Granby, Colorado, where ranch car meets all guests by appointment. Season June 15 to September 15.

Accommodations: For 60 guests. Cabins accommodating two to six persons, all with twin beds and bath, some sitting rooms, all with automatic gas heat.

Activities: Fishing, all ranch activities, dancing, riding, sightseeing trips, supervised children's playground.

Rates: \$77.00 to \$84.00 per person, per week. Family Rates. For information or reservations write Irwin S. Beattie, Phantom Valley Ranch, Grand Lake, Colorado.

RAWAH RANCH. Location: Glendevy, Colorado, in the Roosevelt National Forest. Elevation 8,400 feet. Take Union Pacific to Denver, Colorado, or Laramie, Wyoming, where ranch car meets guests by arrangement.

Accommodations: For 32 in clean, modern rooms. Meals family style. Season, May 29 through September.

Activities: Riding, fishing, hiking, packing, hunting.

Rates: On application to Rawah Ranch, Glendevy, Colo. Winter address: 3726 Pierce St., Wheat Ridge, Colorado.

REDSTONE LODGE. Location: Redstone, 17 miles south of Carbondale, Colorado, 200 miles west of Denver, in the beautiful Crystal River valley. Elevation 7250 ft. Take Union Pacific to Denver, thence D&RGW to Glenwood Springs where guests are met without charge. Season — Open all year.

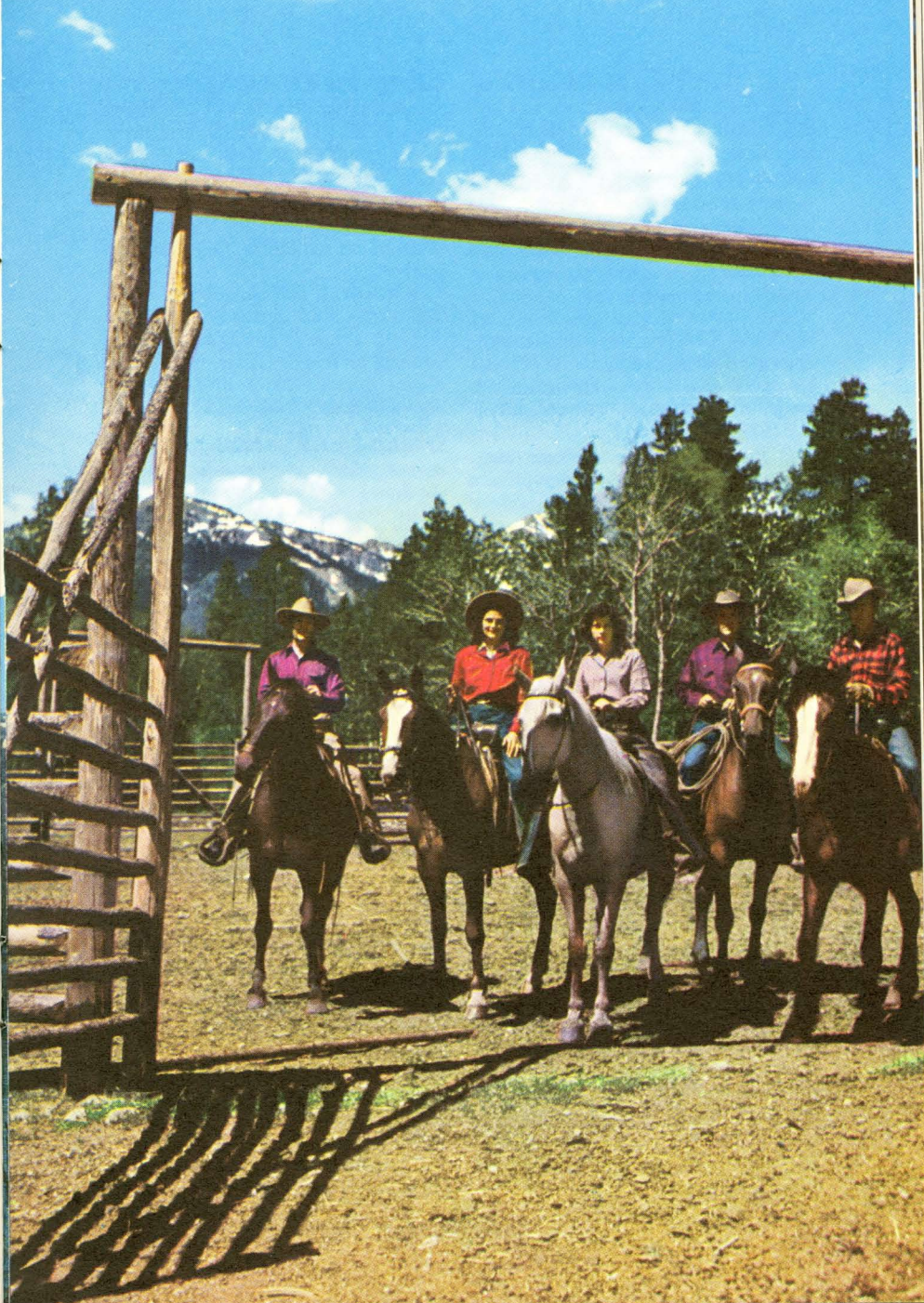
Accommodations: Mansion type Main Lodge and annex, 40 rooms all with bath. Meal service on European plan.

Activities: Fishing, horseback riding, Shetland ponies, Surry, hiking, hunting in season, swimming pool, golf and tennis. Skiing in winter.

Rates: On request to Frank E. Kistler, owner-manager, P. O. Box 119, Glenwood Springs, Colo.


SADDLE POCKET RANCH. Location: Slater on the border of Northwestern Colorado and Southern Wyoming in the Valley of the Little Snake River famous for trout fishing and beautiful mountain scenery. Take Union Pacific to Rawlins or to Denver. From Denver the D&RGW, or the Denver Salt Lake & Pacific bus to Craig. Guests met at either Rawlins or Craig by appointment. Elevation 6,700 feet.

Accommodations: For 18 guests in one and two room modern cabins, all with bath — single rooms in the ranch house. Season: June 1st to Labor Day.



Activities: Horseback riding, swimming, trout fishing, steak fries and picnics, rodeos and all of the interesting activities of an operating cattle ranch. Deer hunting in season.

Rates: \$77.00 to \$90.00 a week including saddle horses. References exchanged. Write Ralph Salisbury, Slater P. O., Colorado.




SEVEN-W RANCH. Location: Gypsum, Colorado. Take Union Pacific to Denver, D&RGW to Glenwood Springs, where ranch car meets by appointment. Elevation 8,700 feet.

Accommodations: For 20 people. Main Lodge and private cabins with private bath. June 1 to October 15.

Activities: Riding, hiking, fishing. Side trips can be arranged to Aspen, Leadville, etc. Big game hunting in season.

Rates: \$60.00 to \$65.00 per person per week. Special rates during June and September. Write Shirley Jodrie, Gypsum, Colo.



SKY CORRAL RANCH. Location: In a secluded mountain valley of the Roosevelt National Forest, 23 miles west of Ft. Collins, Colorado. Elev. 7500 ft. Take Union Pacific to Denver where guests are met by appointment. A 500 acre operating horse ranch; open all year.

Accommodations: For 16 guests in lodge and cabins, large family size rooms with private bath. Quality food served ranch style.

Activities: Riding (including instruction and arena work), pack trips, fishing, steak fries, sports, sightseeing trips, square dancing and hunting in season. Informal ranch life.


Rates: American plan \$85.00 per week per person; family rates on request to Mark M. Grubbs Jr., Sky Corral Ranch, Bellvue, Colorado.

SNOWSHOE RANCH. Location: One hundred thirty-three miles northwest of Denver. Take Union Pacific to Denver, thence D&RGW to Kremmling, Colorado, where guests are met without charge. Elevation 8,500 feet.

Accommodations: For 25 guests in ranch house and cabins. June 15 to September 1.

Activities: Riding, photography, fishing, hiking, ranch activities.


Rates: \$75.00 to \$95.00 per week, depending on length of stay, etc. Rate includes horses. Write F. J. Kasdorf, Snowshoe Ranch, Kremmling, Colorado.



SPREAD EAGLE RANCH. Location: 8 miles northwest of Westcliffe, Colo., in the Sangre de Cristo mountains. Take Union Pacific to Denver, thence D&RGW RR to Texas Creek, where ranch car meets guests by appointment. Season: Mid June to September 3.

Accommodations: For 30 guests. Main Lodge rooms with adjacent bathrooms and scattered cabins with connecting and private baths. Rustic Clubhouse. No bar.


Activities: A complete program of ranch activities 7 days and 7 nights a week, including fishing in over 50 high-altitude lakes and streams, riding, hiking, uranium prospecting, steak-fries, square dancing, sightseeing. Complete program for children.



Rates: All-expense, American plan from \$50 to \$85. Children, \$40 per week. Daily rate, one-sixth weekly rate.


Write to Spread Eagle Ranch, Box 197, Westcliffe, Colo.

STEAD GUEST RANCH. Location: In Rocky Mountain National Park, 75 miles northwest of Denver, and 5½ miles west of Estes Park Village. Elevation 8,200 feet. Take Union Pacific to Denver, thence Rocky Mountain Motor Co. bus to Estes Park. Season June 6 to Mid-September.



Accommodations: For 185 guests. Main ranch building contains lobby,

card rooms, large dining hall and few sleeping rooms. Cottages containing one to 12 rooms each, grouped about, with or without bath.



Activities: Riding, hiking, fishing, picnic trips, golfing, and steak fries, swimming in heated pool, cocktail bar, dancing and entertainments. Children's counsellor. Rodeos.


Rates: American plan, \$17.00 to \$30.00 single per day; \$23.00 to \$36.00 double. For information or reservations write Stead Ranch, Estes Park, Colorado.

SUN VALLEY GUEST RANCH. Location: 105 miles from Denver, bordering on the Rocky Mountain National Park. Take Union Pacific to Denver, thence D&RGW to Granby where guests are met by appointment. Elevation 8,600 feet.

Accommodations: For 35 people in modern cottages. Dining room in main Lodge. Season, June 1 to October 1.

Activities: Riding, hiking, fishing, hay rides, boating, steak fries. Deer and elk hunting.

Rates: American plan, \$12.00 per day per person, or \$77.00 per week. Half rates for children under 8 years. Write Stan and Esther Williams, Sun Valley Guest Ranch, P. O. Box 518, Grand Lake, Colorado.



SYLVAN DALE RANCH. Location: 9 miles west of Loveland, Colorado. Take Union Pacific to Denver, thence bus to Loveland where ranch wagon meets guests by arrangement. Elevation 5,300 feet.

Accommodations: For 60 to 65 people in main lodge and eight modern cabins. Season, June 9 to September 1.

Activities: Riding, pack trips, moonlight rides, riding instruction, fishing in private stocked lake and Big Thompson River, modern swimming pool, riflery, shuffleboard, archery, rodeos. New cement court and play area for children.

Rates: American, \$8.00 to \$16.00 per day. Family and early season rates. Write Maurice and Mayme Jessup, Sylvan Dale Ranch, Loveland, Colorado.

SYLVANIA OF THE ROCKIES CAMP FOR GIRLS. Location: Nine miles from Bailey, Colo., 54 miles west of Denver. Elevation 8,000 feet. Take Union Pacific to Denver where campers are met by appointment. Season June 24 to August 19. Post Camp, August 19-27.

Accommodations: For 70 girls, ages 6 to 17. Main ranch house with modern conveniences; recreation hall and music studio. Well built cabins house 8 girls and 2 counsellors. All sanitary facilities approved. Registered nurse on staff. One adult counsellor employed for each group of four campers. Meals under supervision of dietitian.

Activities: Daily riding included in fee; pack trips, cross country rides, trail rides and instruction in the large ring, music, dramatics, dancing, tutoring in academic work, crafts of all types; tennis, archery, badminton, riflery, fencing, swimming, photography, camp outs, and all land sports. Every camper insured.

Rates: On application. For information and booklet address Miss Amy Lou Holmes and Miss Elizabeth M. Hanaman, directors, Sylvania of the Rockies, Bailey, Colo. Phone Bailey, Temple 8-5960.

TARRYALL RIVER RANCH. Location: 15 miles north of Lake George, Colorado. Lake George is 39 miles due west of Colorado Springs. Take Union Pacific to Denver, thence connecting train service to Colorado Springs, where ranch station wagon meets guests by appointment. Elevation 8,200 feet. Season May 15 to October 31.

Accommodations: For 30 guests in Main Lodge, Guest Lodge, Recreational Building, Skyledge Cottage; all modern, connecting baths, large fireplaces, pure spring water.



Activities: Riding and pack trips on scenic mountain trails, hiking, fishing in privately stocked streams, horseshoes, badminton, ping pong, pool, dancing, jeep trips.

Rates: All inclusive—\$75.00 to \$90.00 per week. Rates for children under 11 years. Write Edgar Sheffer, Tarryall River Ranch, Lake George, Colo. Winter address: RR 1, Box 143, LeGrand, California.

TRAIL CREEK RANCH. Location: Livermore, Colorado. Take Union Pacific to Laramie, Wyoming, or Ft. Collins, Colo., where ranch car meets guests by appointment. Season, June through October.

Accommodations: For 12 guests in large ranch house, completely modern.

Activities: Riding, fishing, and regular ranch life activity. Big game hunting in season. Pack trips arranged.

Rates: \$80.00 and up per week American plan. 10% discount for families. For information or reservations write R. J. Swan, Livermore, Colorado.

TROJAN RANCH CAMP FOR BOYS AND GIRLS. Located in the heart of the Rocky Mountains, ten miles west of Boulder. Take Union Pacific to Denver where campers are met by camp car.

Two separate programs for boys and girls seven to seventeen. All modern buildings, one counselor for every five campers, twenty-fifth year of operation.

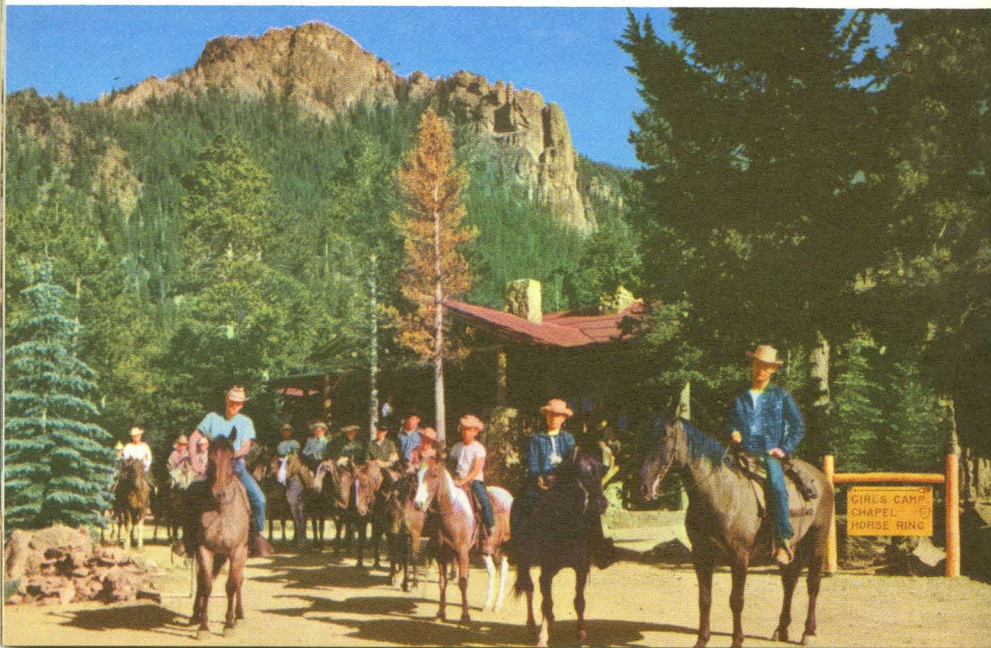
Limited to seventy-five boys, and seventy-five girls.

Program consists of crafts, athletics, riflery, archery, games, mountain trips, dancing, athletics, skeet shooting, trampolines, judo wrestling, photography, gymnastics, and tumbling, horse-back riding, pack trips.

Special co-ed activities, educational trips, and a Yellowstone tour between terms.

Outpost camps for swimming, sailing, motor boating, water skiing, aquaplaning, and snow sports.

Rates, write for complete booklet and prices with application to Mr. G. S. Walker, Camp Director, P. O. Box 711, Boulder, Colorado.





TUMBLING RIVER RANCH. Location: Grant, Colorado, 58 miles southwest of Denver, near Mt. Evans and the Continental Divide in Pike National Forest. Take Union Pacific to Denver where ranch car meets guests by appointment. \$10.00 per group per trip. Season: May 1 to November 1.



Accommodations: For 35. Stone and log chateau; bedrooms with fireplace and private bath; steam heat; refreshment lounge; also modern log cabins, each equipped with private bath and fireplace.



Activities: Riding on high mountain trails, hiking, fishing, swimming in new heated pool, pack trips, rodeos, archery, horseshoes, badminton, ping pong, ranch activities, steak fries, jeep trips, dancing; hunting in season.

Rates: American. \$100.00 per week, including horses and all ranch activities. Special family and off-season rates. For information or reservations write Tumbling River Ranch, Ernie and Meezie Keyes, Grant P. O., Park County, Colorado.

TWO BARS SEVEN RANCH. Location: Virginia Dale, Colorado-Wyoming, about thirty miles south of Laramie, Wyo. Take Union Pacific to Laramie, or Ft. Collins, Colorado, where ranch car meets on appointment. Elevation 7,280 ft.



Accommodations: For 20 guests in main ranch house and modern lodge. Season, May 25 to October 31. An operating cattle spread.

Activities: Riding, fishing, steak fries, moonlight rides, and regular ranch activities. Annual trek to Cheyenne "Frontier Days" in July; Caravan to Estes Park in early August. Annual ranch rodeo last week in June. Big game hunting in season. Dancing and indoor games in new recreation hall.



Rates: On application to Ted Schaffer, Two Bars Seven Ranch, Virginia Dale, Colorado. Winter address: Castle Hot Springs, Arizona.

UT BAR RANCH. Location: In Colorado, just south of Jelm, Wyoming. Take Union Pacific to Laramie, Wyo., where guests are met by appointment without charge. Elevation 7,965.



Accommodations: For 25 guests in main lodge and modern rustic cabins, each with private bath. June 15 to September 30.

Activities: Riding, pack trips, fishing, river swimming, ranch activities, dancing, games, etc.

Rates: \$80.00 to \$90.00 per week. American plan. Special rates for children under 10. Write R. M. Leake, Glendevy, Colo., or Dr. Fred F. Snider, Ft. Meyers Beach, Florida.



WAGON WHEEL RANCH. Location: Wagon Wheel Gap, Colorado, in the midst of the Rio Grande National Forest. Take Union Pacific to Denver, thence by bus, or rent car in Denver for scenic 7-hour drive. Ranch will furnish map, etc. Elevation 8,500 feet.

Accommodations: For about 40 people. All rooms private, with private or connecting bath. About June 15 to September 20.

Activities: Fishing, riding, swimming in hot mineral springs water, or invigorating cold water.

Rates: On application to Arthur and Geneva Sharp, Wagon Wheel Ranch, Wagon Wheel Gap, Colorado.



WHITEMAN - GAYLORD RANCH SCHOOL. Location: At the Lowell Whiteman Ranch near Steamboat

Springs, Colorado, 190 miles northwest of Denver. Take Union Pacific to Denver, thence D&RGW to Steamboat Springs. Elevation 7,200 feet.

Accommodations and Activities: Summer Session at the Lowell Whiteman Ranch offers a Western Camp, with an academic program, if desired. Includes work training, Western and English riding, pack trips to the mountains, swimming, crafts, riflery, and field trips. Fifty boys ages 12 to 18 years.

Whiteman-Gaylord School offers a full academic college preparation, with emphasis on Languages (Latin, Spanish, French and German), Mathematics, Science and History. Small classes, individual attention. Coeducational — fifty boys and fifty girls — grades 9 to 12. School year — September to June (4 weeks Christmas Holiday). Includes two months in foreign country each year.

Activities include: Skiing, riding, soccer, swimming, riflery, polo, crafts, and drama.

Rates: Write Director of Admission, Whiteman-Gaylord Ranch School, P. O. Box 1, Steamboat Springs, Colorado.

WILDERNESS TRAILS RANCH. Location: 40 miles northeast of Durango in historic southwestern Colorado. Adjacent to Mesa Verde National Park, Aztec Indian ruins, Navajo, Apache and Ute Indian reservations. Take Union Pacific to Denver, thence Frontier Airlines to Durango where ranch car meets guests by arrangement. Altitude 7,400 feet.

Accommodations: For 40 guests. Main ranch lodge with detached guest cabins. Strictly modern in every respect. Adjoining the primitive area of the San Juan National Forest.

Activities: Riding, fishing, in private lake, steak fries, square dancing, chuck wagon dinners, pack-trips. All ranch activities under perfect conditions. June 1 to September 25.

Rates: From \$85.00 per week. American plan only. Family rates. Special party

and long period rates. Write Bob and Mary Venuti, Bayfield, Colorado.

WILDHORN GUEST RANCH. Location: An operating cattle and guest Ranch in the Heart of the Pike National Forest, 12 miles north of Florissant. Florissant is 34 miles west of Colorado Springs. Take Union Pacific to Denver, thence connecting train service to Colorado Springs, where Ranch Station Wagons meet guests by appointment. Elevation, 8,500 feet.

Accommodations: For 100 guests in Main Lodge and Cabins. Rooms in Main Lodge with detached or private bath. Cabins with private bath. Rustic, comfortable furnishings. Fireplaces. Season, May 15 to October 1.

Activities: Swimming in Heated and Filtered Swimming Pool, fishing in stocked trout streams, chuck wagon dinners, horseback riding, square dancing, movies, pack trips, horseshoes, ping pong, etc. Hunting in season. Cocktail lounge. Sightseeing trips available direct from Ranch to Pikes Peak, Royal Gorge, Garden of the Gods, etc.

Rates: All inclusive — \$87.50 and up. For information or reservations write Hank Hoder, Florissant, Colorado.

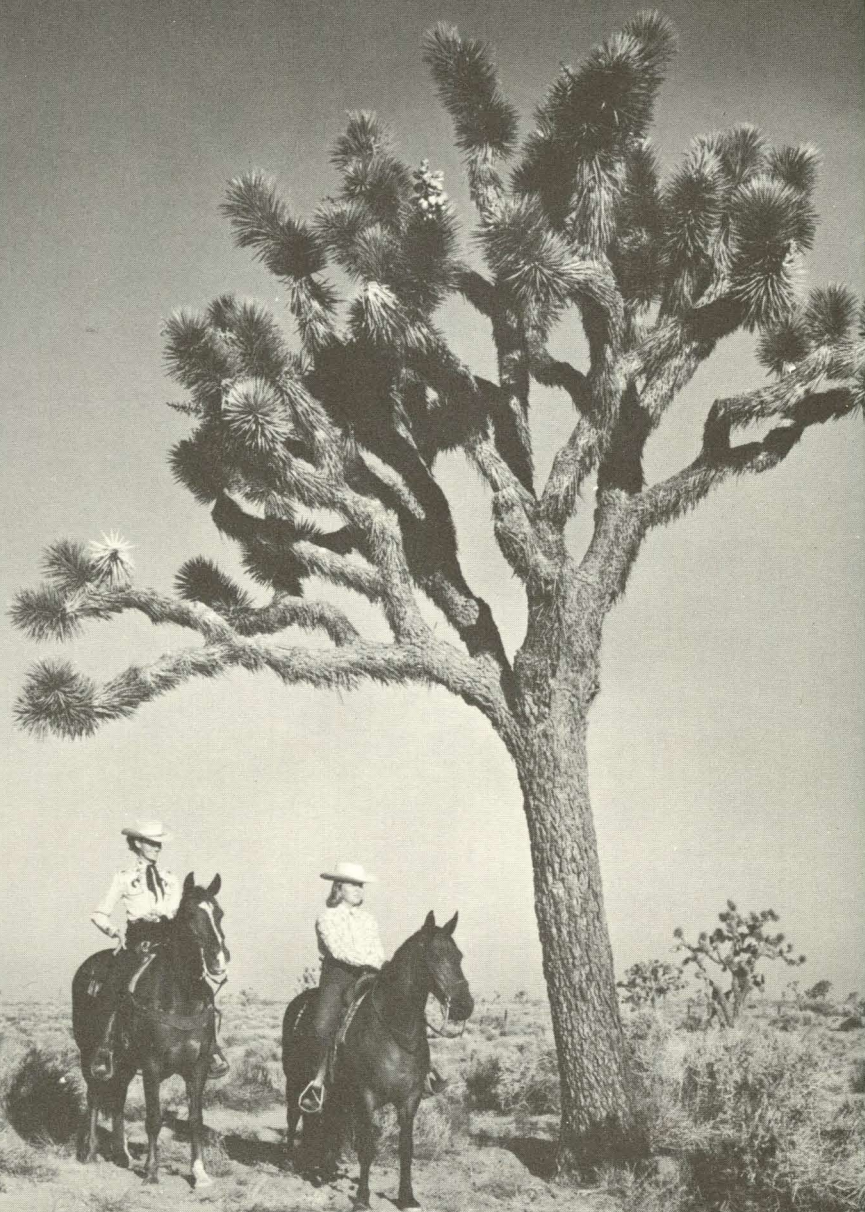
WIND RIVER RANCH. Location: 69 miles northwest of Denver, 8 miles south of Estes Park. Elevation 9,300 feet. Take Union Pacific to LaSalle, Denver or Greeley, Colorado, thence Rocky Mountain Motor Co. bus. Guests met in Estes Park without charge.

Accommodations: For 42 guests. Log ranch house and log guest cabins. All bedrooms have bath. Season, June 15 to October 1.


Activities: Riding, mountain climbing, pack trips, hiking, picnics, amateur rodeos, fishing.

Rates: American plan. Rates on request. For information or reservations address Bob and Helen Hutchinson. Estes Park, Colorado.






Utah, Nevada and California Ranches



Many visitors to the Union Pacific West like to take the opportunity to enjoy the variety of vacation pleasure offered by these neighboring states. Utah is known for its hospitality, and for its most colorful mountain and canyon country. Nevada, noted for its liberal laws and customs, in some respects, has retained more of the exciting Frontier traditions of the early West. Las Vegas combines the Old West with "modern splendor". Its resort hotels have made it the "Entertainment Capital of the Nation."

California ranches offer a wealth of sport and healthful, outdoor living in a variety of desert and mountain settings.

May we suggest that for the finest in transportation to Utah, Nevada and Southern California, you try the Domeliners "City of Los Angeles", "The Challenger" (all-Coach domeliner June 1-Sept. 15, and during winter holiday season) from Chicago; and the Domeliner "City of St. Louis" via Kansas City, Denver and Salt Lake City . . . the latter has through Pullman service between Pacific Northwest and Los Angeles via Salt Lake City.



NORTH FORK GUEST RANCH. Location: In the Dixie National Forest, 39 miles from Cedar City, Utah. Elev. 8000 ft. Half hour drive to Cedar Breaks National Monument, two hours to either Bryce Canyon or Zion National Parks. Take Union Pacific to Cedar City, Utah, where we meet guests without charge. Season June 10 to Oct. 31.

Accommodations: For 14 in double or single log cabins with fireplace and electric lights. Central bath house. Dining room in lodge, bountiful food in ranch family style.

Activities: Your own horse to ride when and as long as desired. Fishing, hiking, big game hunting in season. Cook-outs cowboy style and participation in cattle round-ups. An operating cattle ranch in the region where many motion pictures are made, such as "My Friend Flicka", "Thunderhead", etc.

Rates: American Plan \$12.50 a day per person. Family rates for stays of week or longer. Write Bert and Idona Smith, owner-managers, North Fork Guest Ranch, 164 So. 100 West, Cedar City, Utah.



TWIN LAKES LODGE. Nevada's all-year dude ranch. Located in Las Vegas city limits, 2 miles West of the Union Pacific station. Known as "The Oasis of Las Vegas," Twin Lakes is the oldest recreational area in Las Vegas and is open all year.

Seclusion with 80 acres of vacation pleasure for all the family. The two lakes abound in bass and perch fishing, trap shooting, archery, boating and water sports. There is a large cascade trout pool to test your skill. Swimming in the artesian water pool size 100x110 with an abundance of loafing area. Large string of saddle horses with experienced guides. Moonlight steak rides in summer, every Sunday morning a ride followed by breakfast prepared on our big Outdoor Barbecue. Overnight trail and hunting trips and stabling for private horses. Two 18 hole golf courses, the Las Vegas Golf Club being adjacent. Water skiing

club for our guests. Families with children have found Twin Lakes Lodge the perfect vacation, and our clientele return again and again.

Completely modern accommodations for 150 guests in 50 large rooms. Every room with phone, private bath and a picture window overlooking a sylvan scene of lakes, woods, and waterfalls. 16 rooms are deluxe bedroom sitting rooms with fireplaces. Thirty-two rooms with kitchenettes.

Rates: \$6.00 up Single — \$8.00 to \$12.00 Double. \$40.00 to \$65.00 weekly. Reduced rates October 1 to February 1. European plan. Coffee shop. Cabana cocktail room. Television. Union Pacific trains met upon request. Advance reservations suggested. Write Lloyd L. St. John, Twin Lakes Lodge, P. O. Box 1589, Las Vegas, Nevada, Phone DUDley 2-3722.

ALISAL RANCH RESORT. Location: 40 miles north of Santa Barbara. An operating cattle ranch of 10,500 acres in Santa Ynez Valley. Take Union Pacific to Los Angeles and Southern Pacific to Santa Barbara where ranch car meets guests by appointment. Open all year.

Accommodations: For 125 guests in single and double rooms, suites and bungalows, all with private bath and electrically heated.

Activities: Riding, rodeos, tennis, heated pool as well as near-by Pacific Ocean beach. All forms of indoor and outdoor sports, including new 18-hole golf course. Dancing nightly.

Rates: \$17.00 to \$25.00 per day, per person, American plan. Moderate rates for horseback riding. Advance reservations necessary. Write Lynn S. Gillham, Manager, P. O. Box 497, Solvang, Calif.

APPLE VALLEY RANCHO (Inn). Location: five miles east of Victorville. Take Union Pacific to Victorville where ranch car meets guests by appointment. Open all year. Elevation 3,000 feet.

Accommodations: For about 250 people in 101 guest rooms in detached cottages of various sizes, single and double rooms, suites and bungalows, all with private bath. Heated and air-conditioned. Luxurious central lodge with dining, cocktail lounge and recreation rooms.

Activities: Ranching activities of all kinds adjacent. Riding, rodeo field, 18-hole golf course, heated swimming pool, tennis. Breakfast and moonlight rides and barbecues. Steak fries twice weekly.

Rates: \$8.00 up single, \$10.00 up double, per day. European plan. Nominal rates for horseback riding.

Advance reservations suggested. Write Manager, Apple Valley Inn, Apple Valley, California.



CIRCLE BAR B GUEST RANCH. Location: On mountain-side, 3 miles up Refugio Canyon from the Pacific Ocean, 22 miles north of Santa Barbara. Take Union Pacific to Los Angeles; Southern Pacific to Santa Barbara where ranch car meets guests by appointment. Open all year.

Accommodations: For 25 guests in detached cottages of various sizes, single and double rooms with private and connecting baths. Fireplaces and gas heaters.

Activities: An operating cattle and fruit ranch. Riding mountain trails overlooking Pacific Ocean, swimming in modern pool as well as at nearby ocean beach, hunting, fishing, ping pong, television, dancing, barbecues, sightseeing.

Rates: American plan, on request. Family rates. Write Circle Bar B Guest Ranch, Rt. 1, Box 258, Goleta, California.

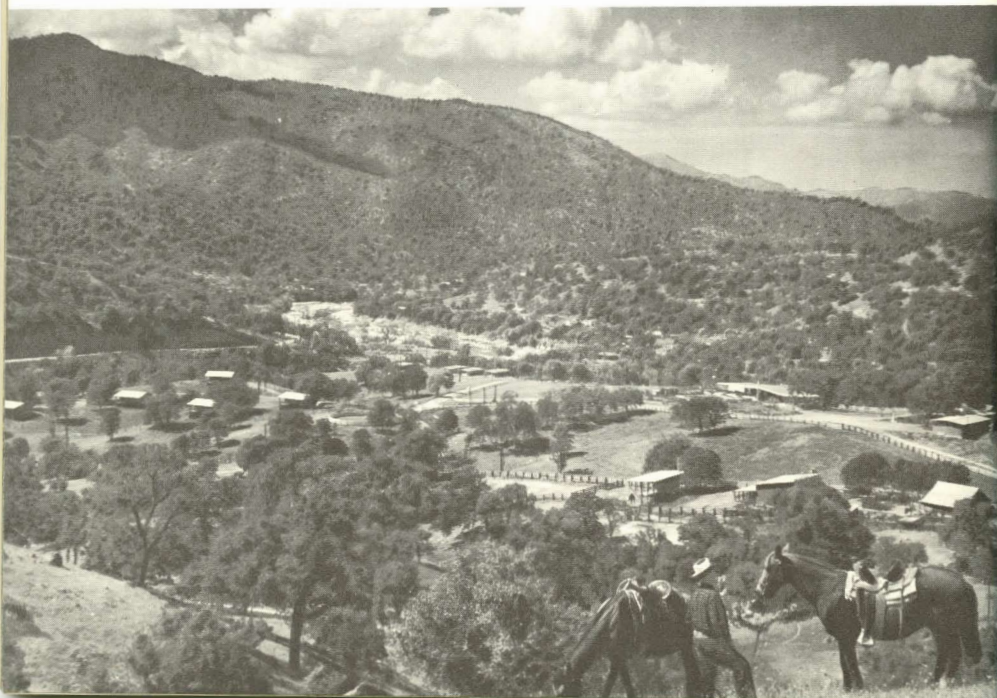
FURNACE CREEK RANCH. (Death Valley Season, October 15 to May 1.)

Location: Death Valley, California. Elevation 178 feet below sea level. Take Union Pacific to Las Vegas, Nevada, thence via Las Vegas-Tonopah-Reno Stages to Ranch.

Accommodations: Cabins and cottages with or without housekeeping facilities, store, cafeteria-fountainette.

Activities: Riding, swimming, golf, sightseeing.

Rates: European plan. Furnace Creek Ranch, Death Valley, California.

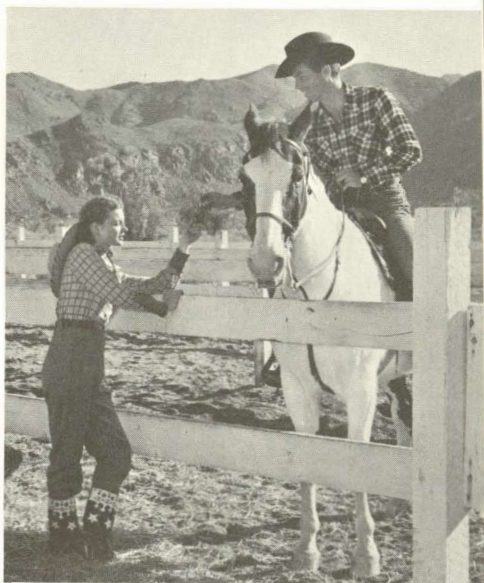


HIGH ADOBE RANCH. Location: In the California mesa country overlooking famous Apple Valley. Elevation 3,000 feet. 95 miles from Los Angeles, 40 miles from San Bernardino, 15 miles from Victorville. Take Union Pacific to Victorville or San Bernardino, where guests are met by appointment.

Accommodations: In deluxe adobe brick units complete with private bath. Also a luxurious family suite.

Activities: Horseback riding, including overnight pack trips to Arrowhead Lake and Big Bear Lake. Swimming, golf at choice of two nearby courses, fishing, barbecues, hunting in season for both large and small game. Open all year.

Rates: American plan. Variety of rates starting at \$15.00 per day per person depending on length of stay, age of children, etc. Write Bill and Fran Paulson, High Adobe Ranch, P. O. Box 638, Apple Valley, California.





HUNNEWELL CIRCLE "H" RANCH.

Location: In real cattle country on a ranch founded by the grandparents of the present owners, in the northeastern sector of California. Take Union Pacific to Reno, thence connecting service.

Accommodations: For not to exceed 35 guests in ranch house and cabins. Meals served family-style. Season: May 15 to October 15.

Activities: Riding, fishing, swimming, breakfast trail trips, pack trips, steak fries, square dancing, ranch activities (working ranch).

Rates: On application to LeNore M. Hunnewell, Hunnewell's Circle "H" Guest Ranch, Bridgeport, Mono County, California. Winter address: Wellington, Nevada.

RIVER WAY RANCH. Location: Three Rivers, California, on the beautiful Kaweah River in the foothills of the High Sierras, immediately adjoining Sequoia National Park with its great Sequoia trees and scenic beauty. Elevation 1,250 feet. Open all year. Take Union Pacific to Los Angeles or San Francisco, thence via Southern Pacific to Tulare where guests are met by arrangement.

Accommodations: For 30 guests in concrete cottages with private baths. Housekeeping cottages are available.

Activities: Riding, fishing, hiking, swimming, dancing, plus all the activities in Sequoia National Park during both the summer and winter seasons.

Rates: American plan. Horse additional. On request to John F. Van Leuven, River Way Ranch, P.O. Box 68, Three Rivers, California.

WHITE SUN GUEST RANCH. Location:

B Palm Springs, 10 miles from Indio. Take Union Pacific to San Bernardino, where ranch car meets guests by appointment.

Accommodations: For 50 people in California-style ranch houses, in twin-bedded and double-bedded ranch style rooms with private bath, built around a central patio and swimming pool. Also accommodations in "Bunkhouse." Roll-away beds for children under twelve. No pets allowed.

Activities: Riding, swimming, tennis, golf, cycling, all outdoor games. Sunday morning Chuck Wagon breakfast rides, moonlight rides, hay rides, Saturday night square dances, Tuesday night steak fries.

Rates: American plan. \$12.00 to \$35.00 per day per person. Write Helen Dengler, P.O. Box 1000, Rancho Mirage, California.

WONDER VALLEY DUDE RANCH.

Location: On west slope of the Sierra Nevada Mountains, 35 miles from Fresno, California. 40 miles from Sequoia National Park. Elevation 1,500 feet. Take Union Pacific to Los Angeles, thence Southern Pacific to Fresno where ranch car meets guests by appointment. Open March 20 to September 15.

Accommodations: For about 50 guests in modern rustic cottages, with fireplace and private bath or shower. Dining room and all cabins air-conditioned.

Activities: Horseback riding, swimming, fishing, hiking, croquet, badminton, ping pong, horseshoes. Dancing, barbecues, hay rides, roping events.

Rates: American. On request. Includes horses. Special children's rates. Write Paul and Becky Webb, Star Route, Box 71, Sanger, California. Reservations required.





DIRECTORY OF RANCHES



JACKSON HOLE RANCHES, WYOMING

	PAGE
Anchor Ranch.....	5
Bar B-C Ranch.....	5
Broken Arrow Ranch.....	5
Camp Creek Ranch.....	6
Circle H Ranch.....	6
Diamond G Ranch.....	6
Double Diamond Ranch.....	6
Fish Creek Ranch.....	6
Four Lazy F Ranch.....	6
Heart 6 Ranch.....	7
Jenny Lake Lodge.....	7
McCallum's Jackson Hole Ranch.....	7
McNeely's Ranch.....	7
Moose Head Ranch.....	7
R Lazy S Ranch.....	8
Rimrock Ranch.....	8
Teton Pass Ranch.....	8
Teton Valley Ranch.....	8
Trail Creek Ranch.....	9
Triangle X Ranch.....	9
Turpin Meadow Ranch.....	10
V Bar V Ranch.....	10
White Grass Ranch.....	10

WIND RIVER-GREEN RIVER RANCHES WYOMING

Circle S Ranch.....	11
CM Ranch.....	11
Flying A Ranch.....	12
G P Bar Ranch.....	12
T Cross Ranch.....	12
Z Bar U Ranch.....	12

CONTINENTAL DIVIDE AND SNOWY RANGE RANCHES, WYOMING

A Bar A Ranch.....	13
Boyer YL Ranch.....	13
French Creek Ranch.....	14
H Bar V Ranch.....	14
Medicine Bow Lodge.....	15
Remount Ranch.....	15
Sierra Madre Ranch.....	15
Water Valley Ranch.....	15
Wooden Shoe Ranch.....	15

CODY RANCHES

	PAGE
Circle H Ranch.....	17
Deer Creek Ranch.....	17
K Bar Z Ranch.....	17
Rimrock Ranch.....	18
Siggins Brothers Triangle X Ranch.....	18
Sunlight Ranch.....	18
Valley Ranch.....	18

MONTANA RANCHES

Bar N Ranch.....	19
Canyon Creek Camp.....	19
Covered Wagon Ranch.....	20
Diamond J Ranch.....	20
Elkhorn Hot Springs.....	20
Elkhorn Ranch.....	20
Lone Mountain Ranch.....	20
Madison Fork Ranch.....	21
Nine Quarter Circle Ranch.....	21
Parade Rest Ranch.....	21
Rockin' Horse Ranch.....	21
Seven L Ranch.....	21
320 Ranch.....	22
Watkins Creek Ranch.....	22

IDAHO RANCHES

Elk Creek Ranch.....	23
Elk Head Ranch.....	23
Flying B Ranch.....	23
Moose Creek Ranch.....	24
Redfish Lake Lodge.....	24
Robinson Bar Ranch.....	24
Sawtooth Lodge.....	24
Shore Lodge.....	24
Slash E Ranch.....	25
Sulphur Creek Dude Ranch.....	25
Wild Rose Ranch.....	25

OREGON RANCHES

Arrowhead Ranch.....	26
Bar M Ranch.....	27
Red's Wallowa Horse Ranch.....	27

WASHINGTON RANCHES

Double K Mountain Ranch.....	28
Flying H Guest Ranch.....	28
Hidden Valley Guest Ranch.....	29
Sky Meadows Guest Ranch.....	29



COLORADO RANCHES

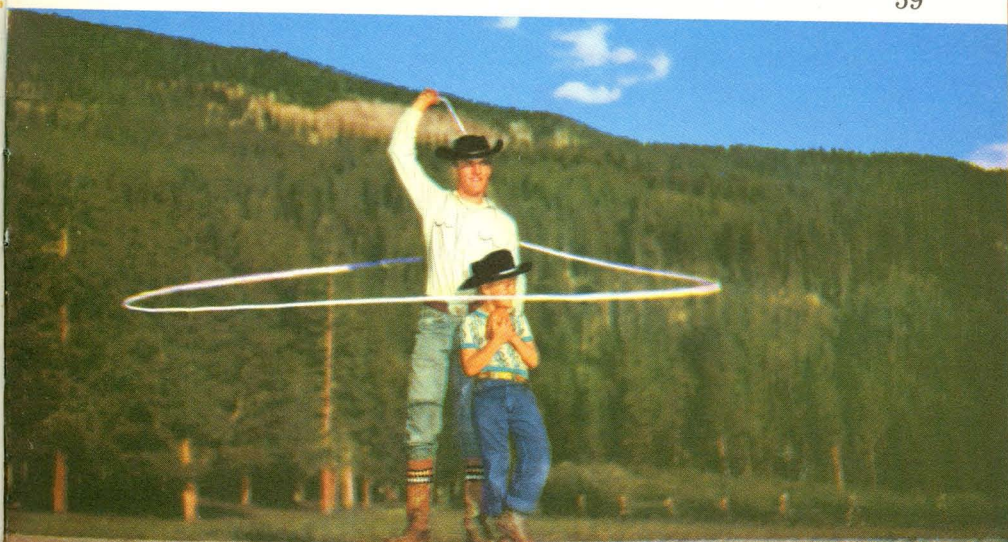
	PAGE
Arnold Western Ranch	33
Amani Mgeni Uwanda	33
Beaver Brook Lodge & Guest Ranch	34
Beaver's S-V Guest Ranch	34
Brinwood Ranch	34
Brockhurst Dude Ranch	34
Brook Forest Inn	34
Buckhorn Lodge	35
Buckhorn Mountain Guest Ranch	35
Camp Chief Ouray	36
Camp Shoshoni Camp for Girls	36
Cheley Colorado Camps	36
Cherokee Dude Ranch	36
C Lazy U Ranch	36
Cool Cowhand Dude Ranch	37
Coulter Lake Guest Ranch	37
CV Bar Guest Ranch	38
Devils Thumb Ranch	38
Don K Ranch	38
Drowsy Water Ranch	39
Estes Park Chalet	39
Fall River Lodge and Ranch	39
Focus Ranch	39
Greystone Ranch	39
Lake Trail Guest Ranch	39
McGraw Ranch	40
Meadow Dale Guest Ranch	40
Neversummer Ranch	40
Nine Quarter Circle	40
Onahu Ranch	41
Painted Post	41
Patterson's Lost Valley Ranch (Formerly Graham's)	42
Phantom Valley Ranch	42
Rawah Ranch	42
Redstone Lodge	42

COLORADO RANCHES

	PAGE
Saddle Pocket Ranch	42
Seven-W Ranch	44
Sky Corral Ranch	44
Snowshoe Ranch	44
Spread Eagle Ranch	44
Stead Guest Ranch	44
Sun Valley Guest Ranch	45
Sylvan Dale Ranch	45
Sylvania of the Rockies Camp for Girls	45
Tarryall River Ranch	45
Trail Creek Ranch	46
Trojan Ranch Camp for Boys and Girls	46
Tumbling River Ranch	47
Two Bars Seven Ranch	47
U T Bar Ranch	47
Wagon Wheel Ranch	47
Whiteman-Gaylord Ranch School	47
Wilderness Trails Ranch	48
Wildhorn Guest Ranch	48
Wind River Ranch	48

UTAH, NEVADA AND CALIFORNIA RANCHES

North Fork Guest Ranch	51
Twin Lakes Lodge	52
Alisal Ranch Resort	53
Apple Valley Rancho (Inn)	53
Circle Bar B Guest Ranch	54
Furnace Creek Ranch	54
High Adobe Ranch	55
Hunnewell Circle "H" Ranch	56
River Way Ranch	56
White Sun Guest Ranch	57
Wonder Valley Dude Ranch	57





UNION PACIFIC

Domeliners
AND
Streamliners

**SERVING
DUDE RANCHES**

SWIFT SERVICE FROM CITY TO SADDLE

Union Pacific's fine fleet of Domeliners — in most cases — bring some of the West's finest dude ranches within an overnight trip from the concrete canyons of the city. From Chicago, the CITY OF DENVER, leaving the Union Station at 3:45 PM, places you in Denver the next morning, and ordinarily, by noon you are on the Colorado ranch of your choice, and ready to "saddle up."

For "dudes" from Chicago and east who select a ranch in Wyoming, Nevada or California, the Domeliners CITY OF LOS ANGELES and The CHALLENGER provide excellent service — the CITY OF PORTLAND serves the ranches in the Jackson Hole and Cody areas (with connecting sleeper service at Pocatello to West Yellowstone, Montana, and Victor, Idaho), Montana, Idaho, Oregon and Washington.

From St. Louis and Kansas City, Union Pacific's Domeliner CITY OF ST. LOUIS takes you rapidly toward the ranch of your choice in Colorado, Wyoming, Nevada or California, while the ever popular PORTLAND ROSE serves the ranches in northwestern Wyoming, Montana, Idaho, Oregon and Washington.

When you choose Union Pacific you will enjoy unexcelled dining car service with special menus for children, beautiful club-lounge cars and the latest style coach and Pullman accommodations.

The Domeliners "City of Los Angeles" and the "City of Portland" — "City of Denver" are the only trains between Chicago and the West with three types of dome cars: dome coach, dome lounge car, and the only dome dining cars in the world. In addition they also carry a unique Redwood Lounge Car with five of the newest style bedrooms.

The "City of St. Louis" is the only through train between St. Louis and Los Angeles. Between Kansas City and Los Angeles it carries the same style Dome Lounge Car, and Dome Coach between St. Louis and Los Angeles, as on the other Pacific Coast domeliners.

FROM PACIFIC COAST THE SCHEDULES EASTBOUND ARE EQUALLY CONVENIENT.

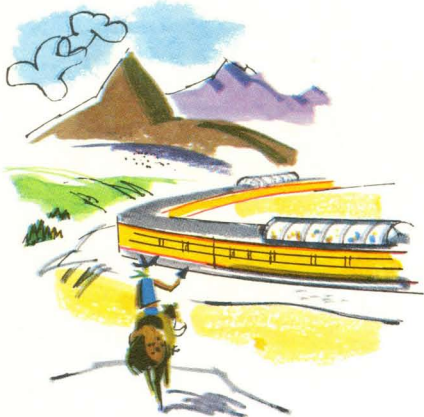
And when you go Union Pacific your vacation starts the moment you board the train. You are assured of a safe and comfortable trip, enjoy sightseeing enroute and arrive at your destination relaxed and ready for a thrilling time. A car from the



Where "East meets West" from Astra-Dome cars on "City of Los Angeles", "The Challenger", "City of Portland", "City of Denver" or "City of St. Louis."

"Meals that appeal" in beautiful dining cars.





ranch of your choice meets you at the railhead for a reasonable fee (and in many cases without charge). Most ranches prefer their guests to leave their cars at home to avoid wear and tear on roads that are kept basic and even primitive to conform with the unspoiled beauty of the West, and to save you the strain of driving unfamiliar mountain country.

More and more families are taking advantage of Union Pacific's Family Plan Fares . . . which really cut travel costs. The starting trip may begin on Monday, Tuesday, Wednesday or Thursday with liberal stop-overs en-route and return trip may start any day of the week. For full details as to how this plan can save you money, for vacation or business travel, see list of Union Pacific offices on page 64, or your local travel agent.



PACIFIC NORTHWEST



Other Regions

In addition to the Dude Ranches of the West, Union Pacific serves a number of other wonderlands — as pictured on this page — that annually attract thousands of vacationists.

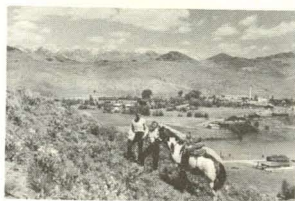
Any Union Pacific representative will be happy to help you with your dude ranch vacation plans.

See list of Union Pacific offices on following page.

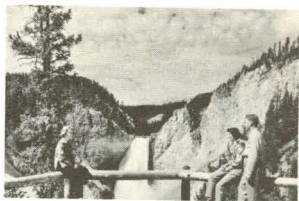
Let's GO!



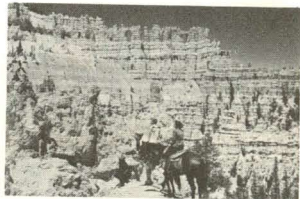
SUN VALLEY IDAHO



YELLOWSTONE — GRAND TETON NAT'L PARKS



Southern UTAH ARIZONA NAT'L PARKS



COLORADO



CALIFORNIA



PLAN YOUR TRIP WITH EXPERT HELP

UNION PACIFIC TRAVEL OFFICES

The most satisfactory way to plan your trip is to consult with one of our representatives. Below is a list of Union Pacific offices. Our men in charge are travel experts of many years' experience, fitted to help plan a trip to the best advantage. They will arrange your route so you will get the most for the least cost, and give you all the necessary advance information. Their help is yours for the asking — it's just part of our friendly service.

Aberdeen, Wash. 3 Union Pacific Station
Alhambra, Cal. 51 S. Garfield Ave.
Astoria, Ore. 968 Commercial St.
Atlanta 3, Ga.
..... 705 Fulton National Bank Building
Bend, Ore. 1054 Bond St.
Beverly Hills, Calif. 9571 Wilshire Blvd.
Birmingham 3, Ala. 701 Brown-Marx Bldg.
Boise, Idaho Idaho Bldg., 212 N. 8th St.
Boston 8, Mass. 294 Washington St.
Bremerton, Wash. 228 First St.
Butte, Mont. 609 Metals Bank Bldg.
Cheyenne, Wyo. 120 W. 16th St.
Chicago 3, Ill. 1 S. LaSalle St.
Cincinnati 2, Ohio 303 Dixie Terminal Bldg.
Cleveland 13, Ohio 1407 Terminal Tower
Dallas 1, Texas 2108 Mercantile Bank Bldg.
Denver 2, Colo. 535 Seventeenth St.
Des Moines 9, Ia. 407 Equitable Bldg.
Detroit 26, Mich. 612 Book Bldg.
East Los Angeles, Cal. 5454 Ferguson Drive
Eugene, Ore. 163 East Twelfth Ave.
Fresno 1, Cal. 207 Rowell Bldg.
Glendale 3, Cal. 404½ N. Brand Blvd.
Hollywood 28, Cal. 6702 Hollywood Blvd.
Huntington Park, Cal. 7002 Pacific Blvd.
Kansas City 6, Mo. 2 E. Eleventh St.
Las Vegas, Nev. Union Pacific Station
Lewiston, Idaho Room 7, Union Depot
Lincoln 8, Nebr. 234 S. 13th St.
Long Beach 2, Cal. 144 Pine Ave.
Los Angeles 14, Cal. 6th & Olive St.
Medford, Ore. 207 Medical Center Bldg.
Memphis 3, Tenn. 1137 Sterick Bldg.
Milwaukee 3, Wis. 814 Warner Bldg.
Minneapolis 2, Minn. 620 Marquette Ave.

New Orleans 12, La. 210 Baronne St.
New York 20, N. Y., Suite 350
..... Rockefeller Center, 626 5th Ave.
Oakland 12, Cal. 436 14th St.
Ogden, Utah Ben Lomond Hotel Bldg.
Omaha 2, Nebr. Cor. 15th & Dodge Sts.
Pasadena 1, Cal. Union Pacific Station
Philadelphia 2, Pa. 904 Girard Trust Bldg.
Pittsburgh 22, Pa. 1419 Oliver Bldg.
Pocatello, Idaho Union Pacific Station
Pomona, Cal. Union Pacific Station
Portland 5, Ore. 701 S. W. Washington St.
Reno, Nev. 501 N. Virginia St.
Riverside, Cal. Union Pacific Station
St. Joseph 2, Mo. 516 Francis St.
St. Louis 1, Mo. 1223 Ambassador Bldg.
Sacramento 14, Cal. 217 Forum Bldg.
Salt Lake City 1, Utah 417 South Main St.
San Diego 1, Cal. 320 Broadway
San Francisco 5, Cal. 405 Market St.
San Jose 13, Cal. 811 Bank of America Bldg.
San Pedro, Cal. 805 S. Pacific Ave.
Santa Ana, Cal. 305 N. Main St.
Santa Monica, Cal. 307 Santa Monica Blvd.
Sioux City, Iowa 418 Benson Bldg.
Seattle 1, Wash. 1300 Fourth Ave.
Spokane 4, Wash. 727 Sprague Ave.
Stockton 6, Cal. 206 California Bldg.
Tacoma 2, Wash. 114 S. Ninth St.
Toronto 1, Ont. 201 Canadian Pacific Bldg.
Tulsa 3, Okla. 721 Kennedy Bldg.
Vancouver, B. C. 1030 W. Georgia St.
Walla Walla, Wash. Union Pacific Station
Washington 5, D. C. 600 Shoreham Bldg.
Winston-Salem 3, N. C. 311 Reynolds Bldg.
Yakima, Wash. Union Pacific Bldg.

UNION PACIFIC RAILROAD

FISHING

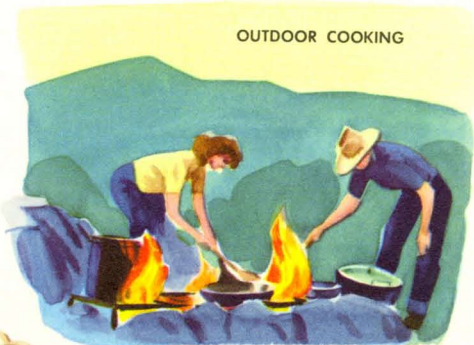


BACK TO THE HORSE AND BUGGY DAYS



TRAIL RIDING

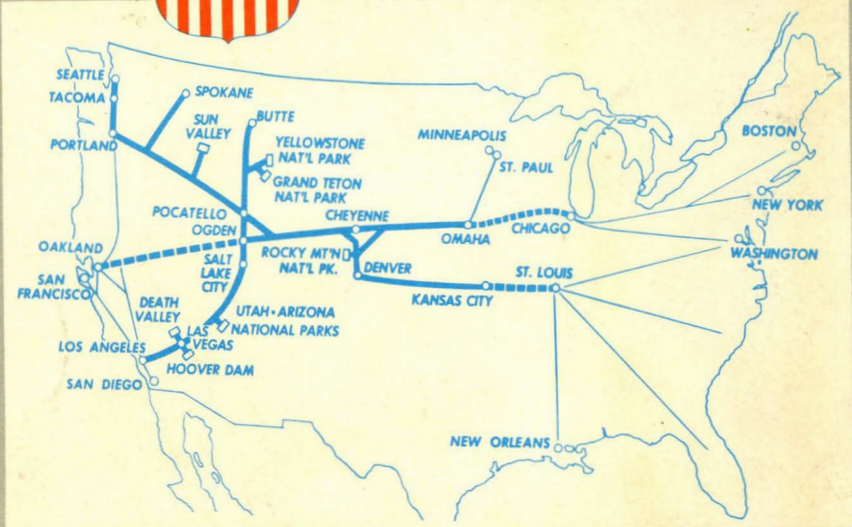
OUTDOOR COOKING



DAY'S END

CHILD'S PLAY





**SERVING THE BEST OF THE WEST
WITH DEPENDABLE TRANSPORTATION**

KALBFLEISCH
NEWELL
GRINNELL
PRESIDENT
TRAVEL
AGENCY
BAker 5-5440
17 CLINTON AVE. SOUTH
ROCHESTER, N. Y.

**Be Specific . . .
say UNION PACIFIC**