



THE STREAMLINER "CITY OF PORTLAND" TRAVERSES NEARLY 2,000 MILES OF THE SCENIC WEST

UNION PACIFIC RAILROAD COLORPHOTO

# UNION PACIFIC RAILROAD

ROAD OF THE DAILY *Domeliners* AND *Streamliners*

## DECEMBER • 1954

| SUN | MON | TUES | WED | THUR | FRI | SAT |
|-----|-----|------|-----|------|-----|-----|
| .   | .   | .    | 1   | 2    | 3   | 4   |
| 5   | 6   | 7    | 8   | 9    | 10  | 11  |
| 12  | 13  | 14   | 15  | 16   | 17  | 18  |
| 19  | 20  | 21   | 22  | 23   | 24  | 25  |
| 26  | 27  | 28   | 29  | 30   | 31  | .   |



1954

NOVEMBER

JANUARY

1955

| S  | M  | T  | W  | T  | F  | S  | S     | M     | T  | W  | T  | F  | S  |
|----|----|----|----|----|----|----|-------|-------|----|----|----|----|----|
|    | 1  | 2  | 3  | 4  | 5  | 6  |       |       |    |    |    |    | 1  |
| 7  | 8  | 9  | 10 | 11 | 12 | 13 | 2     | 3     | 4  | 5  | 6  | 7  | 8  |
| 14 | 15 | 16 | 17 | 18 | 19 | 20 | 9     | 10    | 11 | 12 | 13 | 14 | 15 |
| 21 | 22 | 23 | 24 | 25 | 26 | 27 | 16    | 17    | 18 | 19 | 20 | 21 | 22 |
| 28 | 29 | 30 |    |    |    |    | 23/30 | 24/31 | 25 | 26 | 27 | 28 | 29 |



THIS STATELY TEMPLE IN SALT LAKE CITY, UTAH IS THE CHIEF SANCTUARY OF THE MORMON CHURCH

UNION PACIFIC RAILROAD COLORPHOTO

# UNION PACIFIC RAILROAD

ROAD OF THE DAILY *Domeliners* AND *Streamliners*

## 1955

| JANUARY |       |    |    |    |    |    | FEBRUARY |    |    |    |    |    |    | MARCH |    |    |    |    |    |    |
|---------|-------|----|----|----|----|----|----------|----|----|----|----|----|----|-------|----|----|----|----|----|----|
| S       | M     | T  | W  | T  | F  | S  | S        | M  | T  | W  | T  | F  | S  | S     | M  | T  | W  | T  | F  | S  |
|         |       |    |    |    |    | 1  |          |    | 1  | 2  | 3  | 4  | 5  |       |    | 1  | 2  | 3  | 4  | 5  |
| 2       | 3     | 4  | 5  | 6  | 7  | 8  | 6        | 7  | 8  | 9  | 10 | 11 | 12 | 6     | 7  | 8  | 9  | 10 | 11 | 12 |
| 9       | 10    | 11 | 12 | 13 | 14 | 15 | 13       | 14 | 15 | 16 | 17 | 18 | 19 | 13    | 14 | 15 | 16 | 17 | 18 | 19 |
| 16      | 17    | 18 | 19 | 20 | 21 | 22 | 20       | 21 | 22 | 23 | 24 | 25 | 26 | 20    | 21 | 22 | 23 | 24 | 25 | 26 |
| 23/30   | 24/31 | 25 | 26 | 27 | 28 | 29 | 27       | 28 |    |    |    |    |    | 27    | 28 | 29 | 30 | 31 |    |    |

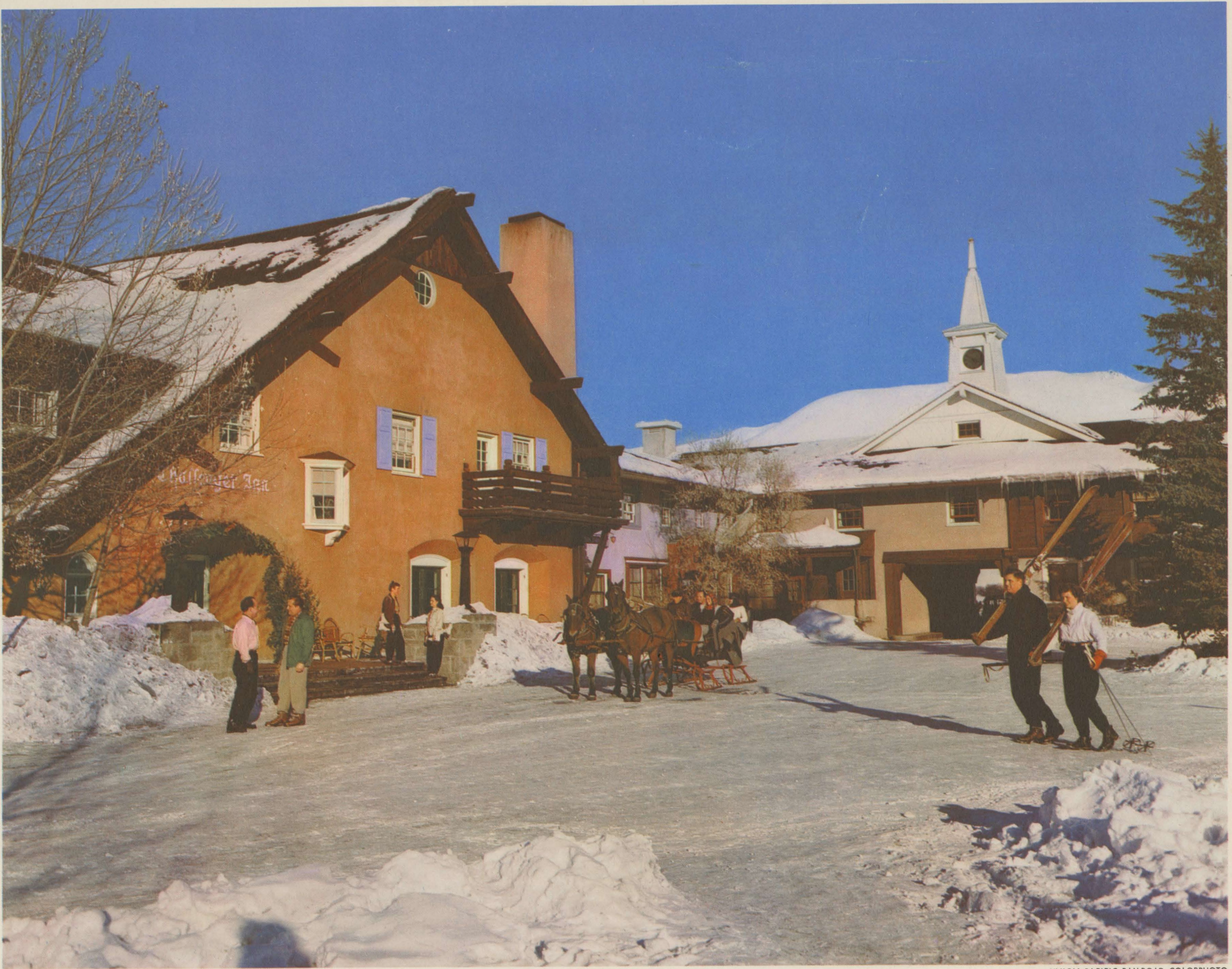
| APRIL |    |    |    |    |    |    | MAY |    |    |    |    |    |    | JUNE |    |    |    |    |    |    |
|-------|----|----|----|----|----|----|-----|----|----|----|----|----|----|------|----|----|----|----|----|----|
| S     | M  | T  | W  | T  | F  | S  | S   | M  | T  | W  | T  | F  | S  | S    | M  | T  | W  | T  | F  | S  |
|       |    |    |    |    | 1  | 2  | 1   | 2  | 3  | 4  | 5  | 6  | 7  |      |    |    | 1  | 2  | 3  | 4  |
| 3     | 4  | 5  | 6  | 7  | 8  | 9  | 8   | 9  | 10 | 11 | 12 | 13 | 14 | 5    | 6  | 7  | 8  | 9  | 10 | 11 |
| 10    | 11 | 12 | 13 | 14 | 15 | 16 | 15  | 16 | 17 | 18 | 19 | 20 | 21 | 12   | 13 | 14 | 15 | 16 | 17 | 18 |
| 17    | 18 | 19 | 20 | 21 | 22 | 23 | 22  | 23 | 24 | 25 | 26 | 27 | 28 | 19   | 20 | 21 | 22 | 23 | 24 | 25 |
| 24    | 25 | 26 | 27 | 28 | 29 | 30 | 29  | 30 | 31 |    |    |    |    | 26   | 27 | 28 | 29 | 30 |    |    |

| JULY  |    |    |    |    |    |    | AUGUST |    |    |    |    |    |    | SEPTEMBER |    |    |    |    |    |    |   |
|-------|----|----|----|----|----|----|--------|----|----|----|----|----|----|-----------|----|----|----|----|----|----|---|
| S     | M  | T  | W  | T  | F  | S  | S      | M  | T  | W  | T  | F  | S  | S         | M  | T  | W  | T  | F  | S  |   |
|       |    |    |    |    | 1  | 2  |        |    | 1  | 2  | 3  | 4  | 5  | 6         |    |    |    |    | 1  | 2  | 3 |
| 3     | 4  | 5  | 6  | 7  | 8  | 9  | 7      | 8  | 9  | 10 | 11 | 12 | 13 | 4         | 5  | 6  | 7  | 8  | 9  | 10 |   |
| 10    | 11 | 12 | 13 | 14 | 15 | 16 | 14     | 15 | 16 | 17 | 18 | 19 | 20 | 11        | 12 | 13 | 14 | 15 | 16 | 17 |   |
| 17    | 18 | 19 | 20 | 21 | 22 | 23 | 21     | 22 | 23 | 24 | 25 | 26 | 27 | 18        | 19 | 20 | 21 | 22 | 23 | 24 |   |
| 24/31 | 25 | 26 | 27 | 28 | 29 | 30 | 28     | 29 | 30 | 31 |    |    |    | 25        | 26 | 27 | 28 | 29 | 30 |    |   |

| OCTOBER |       |    |    |    |    |    | NOVEMBER |    |    |    |    |    |    | DECEMBER |    |    |    |    |    |    |
|---------|-------|----|----|----|----|----|----------|----|----|----|----|----|----|----------|----|----|----|----|----|----|
| S       | M     | T  | W  | T  | F  | S  | S        | M  | T  | W  | T  | F  | S  | S        | M  | T  | W  | T  | F  | S  |
|         |       |    |    |    |    | 1  |          |    | 1  | 2  | 3  | 4  | 5  |          |    |    |    | 1  | 2  | 3  |
| 2       | 3     | 4  | 5  | 6  | 7  | 8  | 6        | 7  | 8  | 9  | 10 | 11 | 12 | 4        | 5  | 6  | 7  | 8  | 9  | 10 |
| 9       | 10    | 11 | 12 | 13 | 14 | 15 | 13       | 14 | 15 | 16 | 17 | 18 | 19 | 11       | 12 | 13 | 14 | 15 | 16 | 17 |
| 16      | 17    | 18 | 19 | 20 | 21 | 22 | 20       | 21 | 22 | 23 | 24 | 25 | 26 | 18       | 19 | 20 | 21 | 22 | 23 | 24 |
| 23/30   | 24/31 | 25 | 26 | 27 | 28 | 29 | 27       | 28 | 29 | 30 |    |    |    | 25       | 26 | 27 | 28 | 29 | 30 | 31 |



SUN VALLEY, IDAHO OFFERS A VARIETY OF WINTER SPORTS UNDER A SUMMER SUN

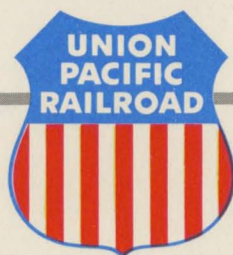
UNION PACIFIC RAILROAD COLORPHOTO

# UNION PACIFIC RAILROAD

ROAD OF THE DAILY *Domeliners* AND *Streamliners*

## JANUARY • 1955

| SUN                      | MON                      | TUES      | WED       | THUR      | FRI       | SAT       |
|--------------------------|--------------------------|-----------|-----------|-----------|-----------|-----------|
| .                        | .                        | .         | .         | .         | .         | <b>1</b>  |
| <b>2</b>                 | <b>3</b>                 | <b>4</b>  | <b>5</b>  | <b>6</b>  | <b>7</b>  | <b>8</b>  |
| <b>9</b>                 | <b>10</b>                | <b>11</b> | <b>12</b> | <b>13</b> | <b>14</b> | <b>15</b> |
| <b>16</b>                | <b>17</b>                | <b>18</b> | <b>19</b> | <b>20</b> | <b>21</b> | <b>22</b> |
| <b>23</b> /<br><b>30</b> | <b>24</b> /<br><b>31</b> | <b>25</b> | <b>26</b> | <b>27</b> | <b>28</b> | <b>29</b> |



### 1954 DECEMBER

| S         | M         | T         | W         | T         | F         | S         |
|-----------|-----------|-----------|-----------|-----------|-----------|-----------|
|           |           |           | <b>1</b>  | <b>2</b>  | <b>3</b>  | <b>4</b>  |
| <b>5</b>  | <b>6</b>  | <b>7</b>  | <b>8</b>  | <b>9</b>  | <b>10</b> | <b>11</b> |
| <b>12</b> | <b>13</b> | <b>14</b> | <b>15</b> | <b>16</b> | <b>17</b> | <b>18</b> |
| <b>19</b> | <b>20</b> | <b>21</b> | <b>22</b> | <b>23</b> | <b>24</b> | <b>25</b> |
| <b>26</b> | <b>27</b> | <b>28</b> | <b>29</b> | <b>30</b> | <b>31</b> |           |

### FEBRUARY 1955

| S         | M         | T         | W         | T         | F         | S         |
|-----------|-----------|-----------|-----------|-----------|-----------|-----------|
|           |           | <b>1</b>  | <b>2</b>  | <b>3</b>  | <b>4</b>  | <b>5</b>  |
| <b>6</b>  | <b>7</b>  | <b>8</b>  | <b>9</b>  | <b>10</b> | <b>11</b> | <b>12</b> |
| <b>13</b> | <b>14</b> | <b>15</b> | <b>16</b> | <b>17</b> | <b>18</b> | <b>19</b> |
| <b>20</b> | <b>21</b> | <b>22</b> | <b>23</b> | <b>24</b> | <b>25</b> | <b>26</b> |
| <b>27</b> | <b>28</b> |           |           |           |           |           |



UNION PACIFIC RAILROAD COLORPHOTO

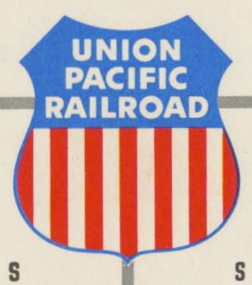
OLD FAITHFUL GEYSER IN YELLOWSTONE NATIONAL PARK NEVER FAILS TO DELIGHT

# UNION PACIFIC RAILROAD

*ROAD OF THE DAILY Downliners AND Streamliners*

## FEBRUARY • 1955

| SUN       | MON | TUES      | WED | THUR | FRI | SAT       |
|-----------|-----|-----------|-----|------|-----|-----------|
| .         | .   | 1         | 2   | 3    | 4   | 5         |
| <b>6</b>  | 7   | 8         | 9   | 10   | 11  | <b>12</b> |
| <b>13</b> | 14  | 15        | 16  | 17   | 18  | 19        |
| <b>20</b> | 21  | <b>22</b> | 23  | 24   | 25  | 26        |
| <b>27</b> | 28  | .         | .   | .    | .   | .         |



1955

JANUARY

MARCH

1955

| S            | M            | T  | W  | T  | F  | S        | S         | M  | T        | W        | T        | F        | S        |
|--------------|--------------|----|----|----|----|----------|-----------|----|----------|----------|----------|----------|----------|
|              |              |    |    |    |    | <b>1</b> |           |    | <b>1</b> | <b>2</b> | <b>3</b> | <b>4</b> | <b>5</b> |
| <b>2</b>     | 3            | 4  | 5  | 6  | 7  | 8        | <b>6</b>  | 7  | 8        | 9        | 10       | 11       | 12       |
| <b>9</b>     | 10           | 11 | 12 | 13 | 14 | 15       | <b>13</b> | 14 | 15       | 16       | 17       | 18       | 19       |
| <b>16</b>    | 17           | 18 | 19 | 20 | 21 | 22       | <b>20</b> | 21 | 22       | 23       | 24       | 25       | 26       |
| <b>23/30</b> | <b>24/31</b> | 25 | 26 | 27 | 28 | 29       | <b>27</b> | 28 | 29       | 30       | 31       |          |          |



TEMPLE OF SINAWAVA IN ZION NATIONAL PARK, UTAH — GREAT WHITE THRONE IN CENTER DISTANCE UNION PACIFIC RAILROAD COLORPHOTO

# UNION PACIFIC RAILROAD

*ROAD OF THE DAILY Domeliners AND Streamliners*

## MARCH • 1955

| SUN       | MON | TUES | WED | THUR | FRI | SAT |
|-----------|-----|------|-----|------|-----|-----|
| .         | .   | 1    | 2   | 3    | 4   | 5   |
| <b>6</b>  | 7   | 8    | 9   | 10   | 11  | 12  |
| <b>13</b> | 14  | 15   | 16  | 17   | 18  | 19  |
| <b>20</b> | 21  | 22   | 23  | 24   | 25  | 26  |
| <b>27</b> | 28  | 29   | 30  | 31   | .   | .   |



1955

| FEBRUARY  |    |           |    |    |    |           |
|-----------|----|-----------|----|----|----|-----------|
| S         | M  | T         | W  | T  | F  | S         |
|           |    | 1         | 2  | 3  | 4  | 5         |
| <b>6</b>  | 7  | 8         | 9  | 10 | 11 | <b>12</b> |
| <b>13</b> | 14 | 15        | 16 | 17 | 18 | 19        |
| <b>20</b> | 21 | <b>22</b> | 23 | 24 | 25 | 26        |
| <b>27</b> | 28 |           |    |    |    |           |

1955

| APRIL     |    |    |    |    |    |    |
|-----------|----|----|----|----|----|----|
| S         | M  | T  | W  | T  | F  | S  |
|           |    |    |    |    | 1  | 2  |
| <b>3</b>  | 4  | 5  | 6  | 7  | 8  | 9  |
| <b>10</b> | 11 | 12 | 13 | 14 | 15 | 16 |
| <b>17</b> | 18 | 19 | 20 | 21 | 22 | 23 |
| <b>24</b> | 25 | 26 | 27 | 28 | 29 | 30 |



SUN VALLEY, IDAHO PROVIDES EVERYTHING FOR AN IDEAL SUMMER VACATION

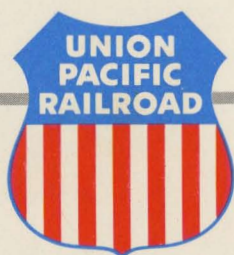
UNION PACIFIC RAILROAD COLORPHOTO

# UNION PACIFIC RAILROAD

ROAD OF THE DAILY *Domeliners* AND *Streamliners*

## APRIL • 1955

| SUN | MON | TUES | WED | THUR | FRI | SAT |
|-----|-----|------|-----|------|-----|-----|
| .   | .   | .    | .   | .    | 1   | 2   |
| 3   | 4   | 5    | 6   | 7    | 8   | 9   |
| 10  | 11  | 12   | 13  | 14   | 15  | 16  |
| 17  | 18  | 19   | 20  | 21   | 22  | 23  |
| 24  | 25  | 26   | 27  | 28   | 29  | 30  |



1955

MARCH

MAY

1955

| S  | M  | T  | W  | T  | F  | S  |
|----|----|----|----|----|----|----|
|    |    | 1  | 2  | 3  | 4  | 5  |
| 6  | 7  | 8  | 9  | 10 | 11 | 12 |
| 13 | 14 | 15 | 16 | 17 | 18 | 19 |
| 20 | 21 | 22 | 23 | 24 | 25 | 26 |
| 27 | 28 | 29 | 30 | 31 |    |    |

| S  | M  | T  | W  | T  | F  | S  |
|----|----|----|----|----|----|----|
| 1  | 2  | 3  | 4  | 5  | 6  | 7  |
| 8  | 9  | 10 | 11 | 12 | 13 | 14 |
| 15 | 16 | 17 | 18 | 19 | 20 | 21 |
| 22 | 23 | 24 | 25 | 26 | 27 | 28 |
| 29 | 30 | 31 |    |    |    |    |



BRYCE CANYON, UTAH IS A FAIRYLAND OF HIGHLY COLORED AND EXQUISITELY CARVED ROCK FORMATIONS

UNION PACIFIC RAILROAD COLORPHOTO

# UNION PACIFIC RAILROAD

ROAD OF THE DAILY *Domeliners* AND *Streamliners*

## MAY • 1955

| SUN | MON | TUES | WED | THUR | FRI | SAT |
|-----|-----|------|-----|------|-----|-----|
| 1   | 2   | 3    | 4   | 5    | 6   | 7   |
| 8   | 9   | 10   | 11  | 12   | 13  | 14  |
| 15  | 16  | 17   | 18  | 19   | 20  | 21  |
| 22  | 23  | 24   | 25  | 26   | 27  | 28  |
| 29  | 30  | 31   | .   | .    | .   | .   |



1955

APRIL

JUNE

1955

| S  | M  | T  | W  | T  | F  | S  |
|----|----|----|----|----|----|----|
|    |    |    |    |    | 1  | 2  |
| 3  | 4  | 5  | 6  | 7  | 8  | 9  |
| 10 | 11 | 12 | 13 | 14 | 15 | 16 |
| 17 | 18 | 19 | 20 | 21 | 22 | 23 |
| 24 | 25 | 26 | 27 | 28 | 29 | 30 |

| S  | M  | T  | W  | T  | F  | S  |
|----|----|----|----|----|----|----|
|    |    |    | 1  | 2  | 3  | 4  |
| 5  | 6  | 7  | 8  | 9  | 10 | 11 |
| 12 | 13 | 14 | 15 | 16 | 17 | 18 |
| 19 | 20 | 21 | 22 | 23 | 24 | 25 |
| 26 | 27 | 28 | 29 | 30 |    |    |



BEAVER POND LAKE AND THE MUMMY RANGE IN ROCKY MOUNTAIN NATIONAL PARK, COLORADO

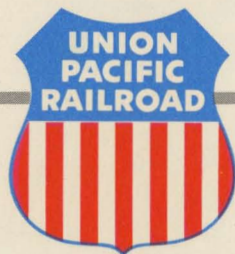
UNION PACIFIC RAILROAD COLORPHOTO

# UNION PACIFIC RAILROAD

ROAD OF THE DAILY *Domeliners* AND *Streamliners*

## JUNE • 1955

| SUN | MON | TUES | WED | THUR | FRI | SAT |
|-----|-----|------|-----|------|-----|-----|
| .   | .   | .    | 1   | 2    | 3   | 4   |
| 5   | 6   | 7    | 8   | 9    | 10  | 11  |
| 12  | 13  | 14   | 15  | 16   | 17  | 18  |
| 19  | 20  | 21   | 22  | 23   | 24  | 25  |
| 26  | 27  | 28   | 29  | 30   | .   | .   |



1955

MAY

JULY

1955

| S  | M  | T  | W  | T  | F  | S  |
|----|----|----|----|----|----|----|
| 1  | 2  | 3  | 4  | 5  | 6  | 7  |
| 8  | 9  | 10 | 11 | 12 | 13 | 14 |
| 15 | 16 | 17 | 18 | 19 | 20 | 21 |
| 22 | 23 | 24 | 25 | 26 | 27 | 28 |
| 29 | 30 | 31 |    |    |    |    |

| S     | M  | T  | W  | T  | F  | S  |
|-------|----|----|----|----|----|----|
|       |    |    |    |    | 1  | 2  |
| 3     | 4  | 5  | 6  | 7  | 8  | 9  |
| 10    | 11 | 12 | 13 | 14 | 15 | 16 |
| 17    | 18 | 19 | 20 | 21 | 22 | 23 |
| 24/31 | 25 | 26 | 27 | 28 | 29 | 30 |





BREATH-TAKING GRAND CANYON FROM PURPLE RIVER JUNCTION ON THE NORTH RIM (ARIZONA) UNION PACIFIC RAILROAD COLORPHOTO

# UNION PACIFIC RAILROAD

*ROAD OF THE DAILY Domeliners AND Streamliners*

## JULY • 1955

| SUN                      | MON       | TUES      | WED       | THUR      | FRI       | SAT       |
|--------------------------|-----------|-----------|-----------|-----------|-----------|-----------|
| .                        | .         | .         | .         | .         | 1         | 2         |
| <b>3</b>                 | <b>4</b>  | <b>5</b>  | <b>6</b>  | <b>7</b>  | <b>8</b>  | <b>9</b>  |
| <b>10</b>                | <b>11</b> | <b>12</b> | <b>13</b> | <b>14</b> | <b>15</b> | <b>16</b> |
| <b>17</b>                | <b>18</b> | <b>19</b> | <b>20</b> | <b>21</b> | <b>22</b> | <b>23</b> |
| <b>24</b> /<br><b>31</b> | <b>25</b> | <b>26</b> | <b>27</b> | <b>28</b> | <b>29</b> | <b>30</b> |



1955

JUNE

AUGUST

1955

| S         | M  | T  | W  | T  | F  | S  |
|-----------|----|----|----|----|----|----|
|           |    |    | 1  | 2  | 3  | 4  |
| <b>5</b>  | 6  | 7  | 8  | 9  | 10 | 11 |
| <b>12</b> | 13 | 14 | 15 | 16 | 17 | 18 |
| <b>19</b> | 20 | 21 | 22 | 23 | 24 | 25 |
| <b>26</b> | 27 | 28 | 29 | 30 |    |    |

| S         | M  | T  | W  | T  | F  | S  |
|-----------|----|----|----|----|----|----|
|           | 1  | 2  | 3  | 4  | 5  | 6  |
| <b>7</b>  | 8  | 9  | 10 | 11 | 12 | 13 |
| <b>14</b> | 15 | 16 | 17 | 18 | 19 | 20 |
| <b>21</b> | 22 | 23 | 24 | 25 | 26 | 27 |
| <b>28</b> | 29 | 30 | 31 |    |    |    |



LOVELY LAKE MARIE IN THE SNOWY RANGE OF SOUTHERN WYOMING

UNION PACIFIC RAILROAD COLORPHOTO

# UNION PACIFIC RAILROAD

ROAD OF THE DAILY *Domeliners* AND *Streamliners*

## AUGUST • 1955

| SUN       | MON | TUES | WED | THUR | FRI | SAT |
|-----------|-----|------|-----|------|-----|-----|
| .         | 1   | 2    | 3   | 4    | 5   | 6   |
| <b>7</b>  | 8   | 9    | 10  | 11   | 12  | 13  |
| <b>14</b> | 15  | 16   | 17  | 18   | 19  | 20  |
| <b>21</b> | 22  | 23   | 24  | 25   | 26  | 27  |
| <b>28</b> | 29  | 30   | 31  | .    | .   | .   |



1955

JULY

SEPTEMBER

1955

| S            | M        | T  | W  | T  | F  | S  | S         | M        | T  | W  | T  | F  | S  |
|--------------|----------|----|----|----|----|----|-----------|----------|----|----|----|----|----|
|              |          |    |    |    | 1  | 2  |           |          |    |    | 1  | 2  | 3  |
| <b>3</b>     | <b>4</b> | 5  | 6  | 7  | 8  | 9  | <b>4</b>  | <b>5</b> | 6  | 7  | 8  | 9  | 10 |
| <b>10</b>    | 11       | 12 | 13 | 14 | 15 | 16 | <b>11</b> | 12       | 13 | 14 | 15 | 16 | 17 |
| <b>17</b>    | 18       | 19 | 20 | 21 | 22 | 23 | <b>18</b> | 19       | 20 | 21 | 22 | 23 | 24 |
| <b>24/31</b> | 25       | 26 | 27 | 28 | 29 | 30 | <b>25</b> | 26       | 27 | 28 | 29 | 30 |    |



ONE OF THE SHOW PLACES OF AMERICA IS JACKSON LAKE AND THE TETON MOUNTAINS IN WESTERN WYOMING UNION PACIFIC RAILROAD COLORPHOTO

# UNION PACIFIC RAILROAD

*ROAD OF THE DAILY Domeliners AND Streamliners*

## SEPTEMBER • 1955

| SUN | MON | TUES | WED | THUR | FRI | SAT |
|-----|-----|------|-----|------|-----|-----|
| .   | .   | .    | .   | 1    | 2   | 3   |
| 4   | 5   | 6    | 7   | 8    | 9   | 10  |
| 11  | 12  | 13   | 14  | 15   | 16  | 17  |
| 18  | 19  | 20   | 21  | 22   | 23  | 24  |
| 25  | 26  | 27   | 28  | 29   | 30  | .   |



1955

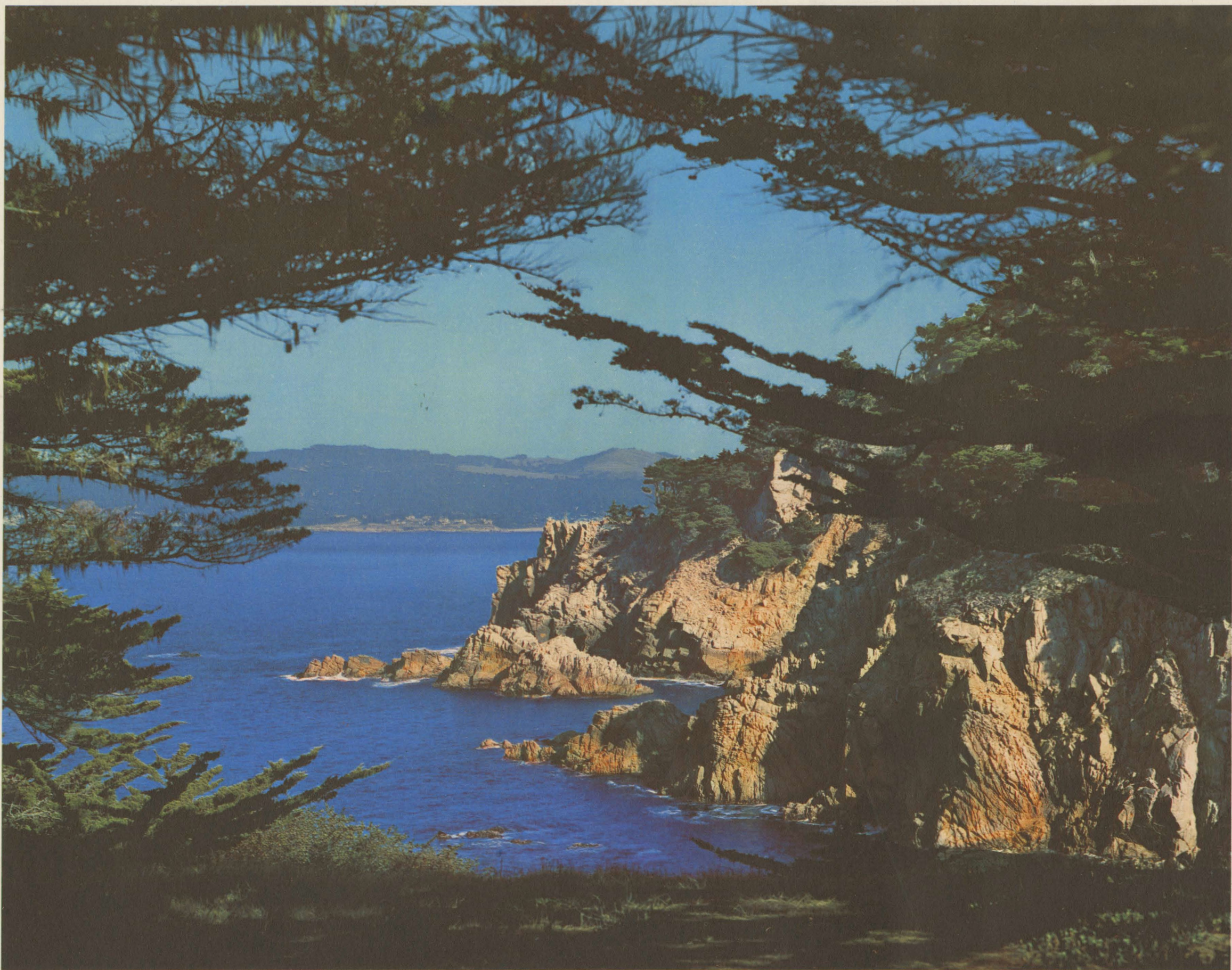
AUGUST

OCTOBER

1955

| S  | M  | T  | W  | T  | F  | S  |
|----|----|----|----|----|----|----|
|    | 1  | 2  | 3  | 4  | 5  | 6  |
| 7  | 8  | 9  | 10 | 11 | 12 | 13 |
| 14 | 15 | 16 | 17 | 18 | 19 | 20 |
| 21 | 22 | 23 | 24 | 25 | 26 | 27 |
| 28 | 29 | 30 | 31 |    |    |    |

| S                | M                | T  | W  | T  | F  | S  |
|------------------|------------------|----|----|----|----|----|
|                  |                  |    |    |    |    | 1  |
| 2                | 3                | 4  | 5  | 6  | 7  | 8  |
| 9                | 10               | 11 | 12 | 13 | 14 | 15 |
| 16               | 17               | 18 | 19 | 20 | 21 | 22 |
| 23 <sup>30</sup> | 24 <sup>31</sup> | 25 | 26 | 27 | 28 | 29 |



CARMEL BAY, NEAR MONTEREY, CALIFORNIA, IS AN ENCHANTING SPOT

UNION PACIFIC RAILROAD COLORPHOTO

# UNION PACIFIC RAILROAD

ROAD OF THE DAILY *Domeliners* AND *Streamliners*

## OCTOBER • 1955

| SUN   | MON   | TUES | WED | THUR | FRI | SAT |
|-------|-------|------|-----|------|-----|-----|
| .     | .     | .    | .   | .    | .   | 1   |
| 2     | 3     | 4    | 5   | 6    | 7   | 8   |
| 9     | 10    | 11   | 12  | 13   | 14  | 15  |
| 16    | 17    | 18   | 19  | 20   | 21  | 22  |
| 23/30 | 24/31 | 25   | 26  | 27   | 28  | 29  |



1955

SEPTEMBER

NOVEMBER

1955

| S  | M  | T  | W  | T  | F  | S  |
|----|----|----|----|----|----|----|
|    |    |    |    | 1  | 2  | 3  |
| 4  | 5  | 6  | 7  | 8  | 9  | 10 |
| 11 | 12 | 13 | 14 | 15 | 16 | 17 |
| 18 | 19 | 20 | 21 | 22 | 23 | 24 |
| 25 | 26 | 27 | 28 | 29 | 30 |    |

| S  | M  | T  | W  | T  | F  | S  |
|----|----|----|----|----|----|----|
|    |    | 1  | 2  | 3  | 4  | 5  |
| 6  | 7  | 8  | 9  | 10 | 11 | 12 |
| 13 | 14 | 15 | 16 | 17 | 18 | 19 |
| 20 | 21 | 22 | 23 | 24 | 25 | 26 |
| 27 | 28 | 29 | 30 |    |    |    |



THE FAMED COLUMBIA RIVER GORGE, LOOKING EAST FROM CROWN POINT, OREGON

UNION PACIFIC RAILROAD COLORPHOTO

# UNION PACIFIC RAILROAD

ROAD OF THE DAILY *Domeliners* AND *Streamliners*

## NOVEMBER • 1955

| SUN | MON | TUES | WED | THUR | FRI | SAT |
|-----|-----|------|-----|------|-----|-----|
| .   | .   | 1    | 2   | 3    | 4   | 5   |
| 6   | 7   | 8    | 9   | 10   | 11  | 12  |
| 13  | 14  | 15   | 16  | 17   | 18  | 19  |
| 20  | 21  | 22   | 23  | 24   | 25  | 26  |
| 27  | 28  | 29   | 30  | .    | .   | .   |



1955

OCTOBER

DECEMBER

1955

| S     | M     | T  | W  | T  | F  | S  | S  | M  | T  | W  | T  | F  | S  |
|-------|-------|----|----|----|----|----|----|----|----|----|----|----|----|
|       |       |    |    |    |    | 1  |    |    |    |    | 1  | 2  | 3  |
| 2     | 3     | 4  | 5  | 6  | 7  | 8  | 4  | 5  | 6  | 7  | 8  | 9  | 10 |
| 9     | 10    | 11 | 12 | 13 | 14 | 15 | 11 | 12 | 13 | 14 | 15 | 16 | 17 |
| 16    | 17    | 18 | 19 | 20 | 21 | 22 | 18 | 19 | 20 | 21 | 22 | 23 | 24 |
| 23/30 | 24/31 | 25 | 26 | 27 | 28 | 29 | 25 | 26 | 27 | 28 | 29 | 30 | 31 |



LOWER FACE OF COLOSSAL HOOVER DAM, NEAR LAS VEGAS, NEVADA

UNION PACIFIC RAILROAD COLORPHOTO

# UNION PACIFIC RAILROAD

ROAD OF THE DAILY *Domeliners* AND *Streamliners*

## DECEMBER • 1955

| SUN | MON | TUES | WED | THUR | FRI | SAT |
|-----|-----|------|-----|------|-----|-----|
| .   | .   | .    | .   | 1    | 2   | 3   |
| 4   | 5   | 6    | 7   | 8    | 9   | 10  |
| 11  | 12  | 13   | 14  | 15   | 16  | 17  |
| 18  | 19  | 20   | 21  | 22   | 23  | 24  |
| 25  | 26  | 27   | 28  | 29   | 30  | 31  |



1955

NOVEMBER

JANUARY

1956

| S  | M  | T  | W  | T  | F  | S  | S  | M  | T  | W  | T  | F  | S  |
|----|----|----|----|----|----|----|----|----|----|----|----|----|----|
|    |    | 1  | 2  | 3  | 4  | 5  | 1  | 2  | 3  | 4  | 5  | 6  | 7  |
| 6  | 7  | 8  | 9  | 10 | 11 | 12 | 8  | 9  | 10 | 11 | 12 | 13 | 14 |
| 13 | 14 | 15 | 16 | 17 | 18 | 19 | 15 | 16 | 17 | 18 | 19 | 20 | 21 |
| 20 | 21 | 22 | 23 | 24 | 25 | 26 | 22 | 23 | 24 | 25 | 26 | 27 | 28 |
| 27 | 28 | 29 | 30 |    |    |    | 29 | 30 | 31 |    |    |    |    |



CATTLE GRAZING IS A VAST INDUSTRY IN THE UNION PACIFIC WEST

UNION PACIFIC RAILROAD COLORPHOTO

# UNION PACIFIC RAILROAD

ROAD OF THE DAILY *Domeliners* AND *Streamliners*

## 1956

| JANUARY |    |    |    |    |    |    | FEBRUARY |    |    |    |    |    |    | MARCH |    |    |    |    |    |    |
|---------|----|----|----|----|----|----|----------|----|----|----|----|----|----|-------|----|----|----|----|----|----|
| S       | M  | T  | W  | T  | F  | S  | S        | M  | T  | W  | T  | F  | S  | S     | M  | T  | W  | T  | F  | S  |
| 1       | 2  | 3  | 4  | 5  | 6  | 7  |          |    |    | 1  | 2  | 3  | 4  |       |    |    |    | 1  | 2  | 3  |
| 8       | 9  | 10 | 11 | 12 | 13 | 14 | 5        | 6  | 7  | 8  | 9  | 10 | 11 | 4     | 5  | 6  | 7  | 8  | 9  | 10 |
| 15      | 16 | 17 | 18 | 19 | 20 | 21 | 12       | 13 | 14 | 15 | 16 | 17 | 18 | 11    | 12 | 13 | 14 | 15 | 16 | 17 |
| 22      | 23 | 24 | 25 | 26 | 27 | 28 | 19       | 20 | 21 | 22 | 23 | 24 | 25 | 18    | 19 | 20 | 21 | 22 | 23 | 24 |
| 29      | 30 | 31 |    |    |    |    | 26       | 27 | 28 | 29 |    |    |    | 25    | 26 | 27 | 28 | 29 | 30 | 31 |

| APRIL |    |    |    |    |    |    | MAY |    |    |    |    |    |    | JUNE |    |    |    |    |    |    |   |
|-------|----|----|----|----|----|----|-----|----|----|----|----|----|----|------|----|----|----|----|----|----|---|
| S     | M  | T  | W  | T  | F  | S  | S   | M  | T  | W  | T  | F  | S  | S    | M  | T  | W  | T  | F  | S  |   |
| 1     | 2  | 3  | 4  | 5  | 6  | 7  |     |    |    | 1  | 2  | 3  | 4  | 5    |    |    |    |    |    | 1  | 2 |
| 8     | 9  | 10 | 11 | 12 | 13 | 14 | 6   | 7  | 8  | 9  | 10 | 11 | 12 | 3    | 4  | 5  | 6  | 7  | 8  | 9  |   |
| 15    | 16 | 17 | 18 | 19 | 20 | 21 | 13  | 14 | 15 | 16 | 17 | 18 | 19 | 10   | 11 | 12 | 13 | 14 | 15 | 16 |   |
| 22    | 23 | 24 | 25 | 26 | 27 | 28 | 20  | 21 | 22 | 23 | 24 | 25 | 26 | 17   | 18 | 19 | 20 | 21 | 22 | 23 |   |
| 29    | 30 |    |    |    |    |    | 27  | 28 | 29 | 30 | 31 |    |    | 24   | 25 | 26 | 27 | 28 | 29 | 30 |   |

| JULY |    |    |    |    |    |    | AUGUST |    |    |    |    |    |    | SEPTEMBER                     |    |    |    |    |    |    |
|------|----|----|----|----|----|----|--------|----|----|----|----|----|----|-------------------------------|----|----|----|----|----|----|
| S    | M  | T  | W  | T  | F  | S  | S      | M  | T  | W  | T  | F  | S  | S                             | M  | T  | W  | T  | F  | S  |
| 1    | 2  | 3  | 4  | 5  | 6  | 7  |        |    |    | 1  | 2  | 3  | 4  |                               |    |    |    |    |    | 1  |
| 8    | 9  | 10 | 11 | 12 | 13 | 14 | 5      | 6  | 7  | 8  | 9  | 10 | 11 | 2                             | 3  | 4  | 5  | 6  | 7  | 8  |
| 15   | 16 | 17 | 18 | 19 | 20 | 21 | 12     | 13 | 14 | 15 | 16 | 17 | 18 | 9                             | 10 | 11 | 12 | 13 | 14 | 15 |
| 22   | 23 | 24 | 25 | 26 | 27 | 28 | 19     | 20 | 21 | 22 | 23 | 24 | 25 | 16                            | 17 | 18 | 19 | 20 | 21 | 22 |
| 29   | 30 | 31 |    |    |    |    | 26     | 27 | 28 | 29 | 30 | 31 |    | <sup>23</sup> / <sub>30</sub> | 24 | 25 | 26 | 27 | 28 | 29 |

| OCTOBER |    |    |    |    |    |    | NOVEMBER |    |    |    |    |    |    | DECEMBER                      |                               |    |    |    |    |    |
|---------|----|----|----|----|----|----|----------|----|----|----|----|----|----|-------------------------------|-------------------------------|----|----|----|----|----|
| S       | M  | T  | W  | T  | F  | S  | S        | M  | T  | W  | T  | F  | S  | S                             | M                             | T  | W  | T  | F  | S  |
|         | 1  | 2  | 3  | 4  | 5  | 6  |          |    |    |    | 1  | 2  | 3  |                               |                               |    |    |    |    | 1  |
| 7       | 8  | 9  | 10 | 11 | 12 | 13 | 4        | 5  | 6  | 7  | 8  | 9  | 10 | 2                             | 3                             | 4  | 5  | 6  | 7  | 8  |
| 14      | 15 | 16 | 17 | 18 | 19 | 20 | 11       | 12 | 13 | 14 | 15 | 16 | 17 | 9                             | 10                            | 11 | 12 | 13 | 14 | 15 |
| 21      | 22 | 23 | 24 | 25 | 26 | 27 | 18       | 19 | 20 | 21 | 22 | 23 | 24 | 16                            | 17                            | 18 | 19 | 20 | 21 | 22 |
| 28      | 29 | 30 | 31 |    |    |    | 25       | 26 | 27 | 28 | 29 | 30 |    | <sup>23</sup> / <sub>30</sub> | <sup>24</sup> / <sub>31</sub> | 25 | 26 | 27 | 28 | 29 |



UNION PACIFIC RAILROAD COLORPHOTO

MODERN MOTIVE POWER ASSURES EFFICIENT HANDLING OF FREIGHT SHIPMENTS VIA UNION PACIFIC

# UNION PACIFIC RAILROAD

*ROAD OF THE DAILY Domeliners AND Streamliners*

**FIRST PAGE** The Streamliner "CITY OF PORTLAND" is one of a fleet of such trains in daily service on the Union Pacific Railroad. Between both Chicago and St. Louis, on the East, and the principal cities of the West, they provide swift, safe, luxury travel and are the favorites of many thousands of travelers.

*1/25 second, F10, Daylight Color Film, 4x5 Speed Graphic, 127mm Kodak Ektar Lens.*

**JANUARY** Sun Valley, Idaho, lies in the foothills of the Sawtooth Mountains in Idaho. There is an excellent terrain with long, timber-free ski runs, and a record of plenty of dry, powder snow lasting into the spring months. At this world-famed winter sports center is an alpine-type village comprising Sun Valley Lodge, Challenger Inn, several dormitory chalets, a moving picture theater, stores, post office, and other buildings. Sun Valley is owned and operated by Union Pacific Railroad.

*1/5 second, F25, Daylight Color Film, 8x10 Eastman 2-D Camera, 14-inch Kodak Commercial Ektar Lens.*

**FEBRUARY** Most famous of all geysers is "Old Faithful," in Yellowstone National Park, Wyoming. Regularly, on an average of every 65 minutes, it erupts a hissing, boiling pillar of water approximately 140 feet straight up into the air. This spectacle of towering water and floating clouds of steam exists for about four minutes, then subsides until the scheduled time of its next performance. It has been estimated that in one day this geyser discharges approximately 250,000 gallons of water.

*1/25 second, F11, Daylight Color Film, 8x10 Eastman 2-D Camera, 10-inch Kodak Wide Field Ektar Lens.*

**MARCH** Erosion, the tireless sculptor in nature's processes, carved Zion Canyon from the red and white sandstone cliffs of Southern Utah. At one point in the narrow upper canyon the lofty walls recede and confine a flower-dotted and tree-shaded court or shrine. This is the beautiful Temple of Sinawava. Here the visitor is afforded incomparable close-up views of the enclosing precipices.

*1/2 second, F29, Daylight Color Film, 8x10 Eastman 2-D Camera, 7 1/2-inch Kodak Wide Field Ektar Lens.*

**APRIL** Sun Valley, Idaho, in summer is ideal for the outdoor enthusiast. Every popular form of recreation, including outdoor ice-skating, may be enjoyed, and there is excellent evening entertainment. In the near-by Sawtooth Mountains are fine pack trip trails and opportunities for fishing and big game hunting. Sun Valley is quickly reached from Shoshone, Idaho, on the Union Pacific Railroad.

*1/5 second, F20, Daylight Color Film, 8x10 Eastman 2-D Camera, 10-inch Apo-Tessar Lens.*

**MAY** Bryce Canyon National Park in southwestern Utah has been called "Nature's Art Gallery." Erosion is the artist that has carved the delicate and fantastic statuesque figures and given the region its cameo-like loveliness. All of the formations are banded lavishly with colors, tints of red, orange, pink, and off-whites. Bryce Canyon Lodge provides ample accommodations for travelers.

*1/5 second, F29, Daylight Color Film, 4x5 Graphic View Camera, 5-inch Ektar Lens.*

**JUNE** Scenic delights of a high order are found in the inner recesses of Rocky Mountain National Park, Colorado. This popular national playground is about seventy miles northwest of Denver, the charming mile-high state capital, reached by Union Pacific Railroad. Colorado is scenically beautiful throughout its length and breadth. It boasts more mountain peaks towering over 14,000 feet than any other state in the Union; in fact, more than all other states combined.

*1/5 second, F22, Daylight Color Film, 8x10 Eastman 2-D Camera, 10-inch Kodak Wide Field Ektar Lens.*

**JULY** Here is a sublime view of the matchless Grand Canyon of the Colorado River from the North Rim. At near-by Bright Angel Point is comfortable Grand Canyon Lodge which offers gracious hospitality. The lofty North Rim of Grand Canyon is reached quickly and with ease by motor bus over modern highways from Cedar City, Utah, served by Union Pacific Railroad.

*1/5 second, F20, Daylight Color Film, 8x10 Eastman 2-D Camera, 14-inch Kodak Commercial Ektar Lens.*

**AUGUST** In the Medicine Bow National Forest region of southern Wyoming is the beautiful Snowy Range and a primitive area dotted with glacial lakes and other scenic delights. It contains some of the West's finest Dude Ranches, and splendid resort hotel accommodations are available in the area. This region is most conveniently reached from Laramie, Wyoming.

*1/5 second, F22, Daylight Color Film, 8x10 Eastman View Camera, 10-inch Ektar Lens.*

**SEPTEMBER** Grand Teton National Park in western Wyoming embraces the historic Teton Range and some of the scenic valley area adjacent to it. A chain of exquisitely beautiful lakes lie at the eastern base of the Tetons. This valley land, known as Jackson Hole, is the site of the new luxurious Jackson Lake Lodge with surrounding accommodations of deluxe cottage type. The Valley is also the home of some of our finest dude ranches.

*1/5 second, F25, Daylight Color Film, 8x10 Eastman 2-D Camera, 14-inch Kodak Commercial Ektar Lens.*

**OCTOBER** California calls to the traveler, the pleasure seeker and the home builder. Its mountains, its seashore, its great romantic cities and its industrial opportunities each extend the invitation. Among its attractions, however, not the least are its network of fine highways, its splendid city boulevards and its scenic drives.

*1/5 second, F25, Daylight Color Film, 8x10 Eastman 2-D Camera, 10-inch Kodak Wide Field Ektar Lens.*

**NOVEMBER** Ages ago the mighty Columbia found its way to the Pacific by cutting an outlet through the Cascade Range. Today Union Pacific trains traverse this gorge for nearly 200 scenic miles. Several dainty waterfalls come into view, among them the celebrated Multnomah. From Crown Point which rises 700 feet above the majestic River, a magnificent panorama is visible.

*1/10 second, F14, Daylight Color Film, 8x10 Eastman 2-D Camera, 13-inch Taylor-Hobson Cooke Lens.*

**DECEMBER** Gigantic Hoover Dam, about 29 miles from Las Vegas, Nevada, represents one of the great engineering feats of our generation. It extends across the Colorado River between Nevada and Arizona, holds back the raging stream and diverts its energy into industrial power uses. Las Vegas is on the main line of the Union Pacific Railroad.

*1/5 second, F20, Daylight Color Film, 8x10 Eastman 2-D Camera, 14-inch Kodak Commercial Ektar Lens.*

**14th PAGE** The famed Mormon (Church of Jesus Christ of Latter-Day Saints) Temple is one of many beautiful and historic buildings in Salt Lake City, Utah. Near by is unique Great Salt Lake, where one may enjoy a "non-sink" swim unequalled in the United States. Salt Lake City, on the main line of the Union Pacific Railroad, is an important trade market and the center of a rich mining district.

*1/5 second, F22, Daylight Color Film, 8x10 Eastman 2-D Camera, 14-inch Kodak Commercial Ektar Lens.*

**15th PAGE** In the Union Pacific West are vast herds of cattle on the rich grazing lands of that region. These herds, being prepared for the markets, are an important unit in the economy of our nation. They provide food and many by-products for use in this and other countries and give employment and a livelihood to many thousands of people.

*1/25 second, F11, Daylight Type Kodachrome, 4x5 Speed Graphic, 5-inch Eastman Ektar Lens.*

**16th PAGE** Diesel power for operating Union Pacific trains began with the Streamliners in the middle thirties. Since then this type of power has been applied to train service increasingly each year. It is now used almost exclusively on both freight and passenger trains, and in switching service.

*1/25 second, F11, Daylight Color Film, 4x5 Speed Graphic, 5 inch Ektar Lens.*

Prints suitable for framing of any of these calendar subjects, in the calendar size, may be obtained free of charge by writing Union Pacific Railroad, Omaha 2, Nebraska, stating your choice.