

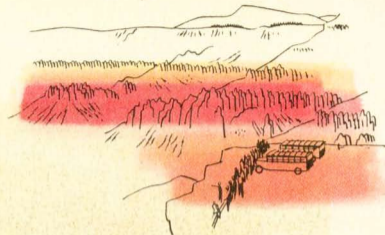
*See America's
Scenic Sensation*

**ZION - BRYCE
GRAND CANYON
NATIONAL PARKS**



BRYCE CANYON

Bryce is one of the most amazing and fascinating sights on earth—an amphitheatre or basin of horseshoe shape, graven one thousand feet deep into the pink and white limestone. It is approximately two miles wide and three miles long and its rim is 8,000 feet in elevation. Bryce Canyon is a bewildering assortment of fantastic formations, alive with flaming, glowing color. There are statues of famous people; spires and minarets; cathedrals, castles, bridges, and countless other formations not to be compared with any familiar object. Horseback and foot trails extend along the rim and into the canyon. There is a spacious central lodge of rustic design at Bryce, and modern, comfortable guest cabins are hidden away among the surrounding pines.



CEDAR BREAKS



KAIBAB FOREST



ZION

NATIONAL PARK was looked upon with awe and reverence by the native Indians. The Mormon pioneers, following the same trend, gave to the crimson-topped cones and buttes of Zion both imaginative and appropriate names. As you ride through this Canyon you appreciate how descriptive are these names: The Mountain of the Sun, the Mountain of Mystery, the Towers of the Virgin, Altar of Sacrifice, the Three Patriarchs, and, most majestic of all—the Great White Throne. The Temple of Sinawava is a park-like area of green grass and a variety of wild flowers and shade trees, surrounded by sheer rock formations. A swimming pool, central lodge and modern cabins contribute to comfortable vacation living.





The Grandeur of GRAND CANYON

The Grand Canyon is usually described as a colossal chasm, 280 miles in length, a mile deep and some twelve miles wide; but it is more precisely a measureless labyrinth of canyons with whole ranges of mountains rising from their depths. And, in the uttermost reaches, deep down in the canyon, is the turbulent Colorado River, grinding away at the canyon walls as it has for countless ages. Its vastness practically overwhelms you; the great sea of shifting rainbow colors exalts you, and the realization that such a place actually exists fills you with indefinable awe. Everyone should see the Grand Canyon some time. Union Pacific's magnificent Grand Canyon Lodge stands on the edge of the lofty North Rim. Round about are modern, comfortable stone and log cabins inviting you to linger in this inspiring place.





Beavertail Cactus Flower

THE all-expense motor bus tours of this great color-splashed Canyon Country include, in addition to the three National Parks, the vast and beautiful Kaibab National Forest in Arizona, the Zion-Mount Carmel Highway with its mile-long window tunnel, and the gorgeously colored amphitheatres of Cedar Breaks National Monument in Utah. The tours start from and return to Cedar City, Utah. Tours range from the one-day tour to Zion National Park only, to the five-day tour which includes all of these colorful regions. Rates are very reasonable. Stop-overs can be arranged at any of the Parks.

*For additional information
ask any representative of*

UNION PACIFIC RAILROAD

OR YOUR TRAVEL AGENT