

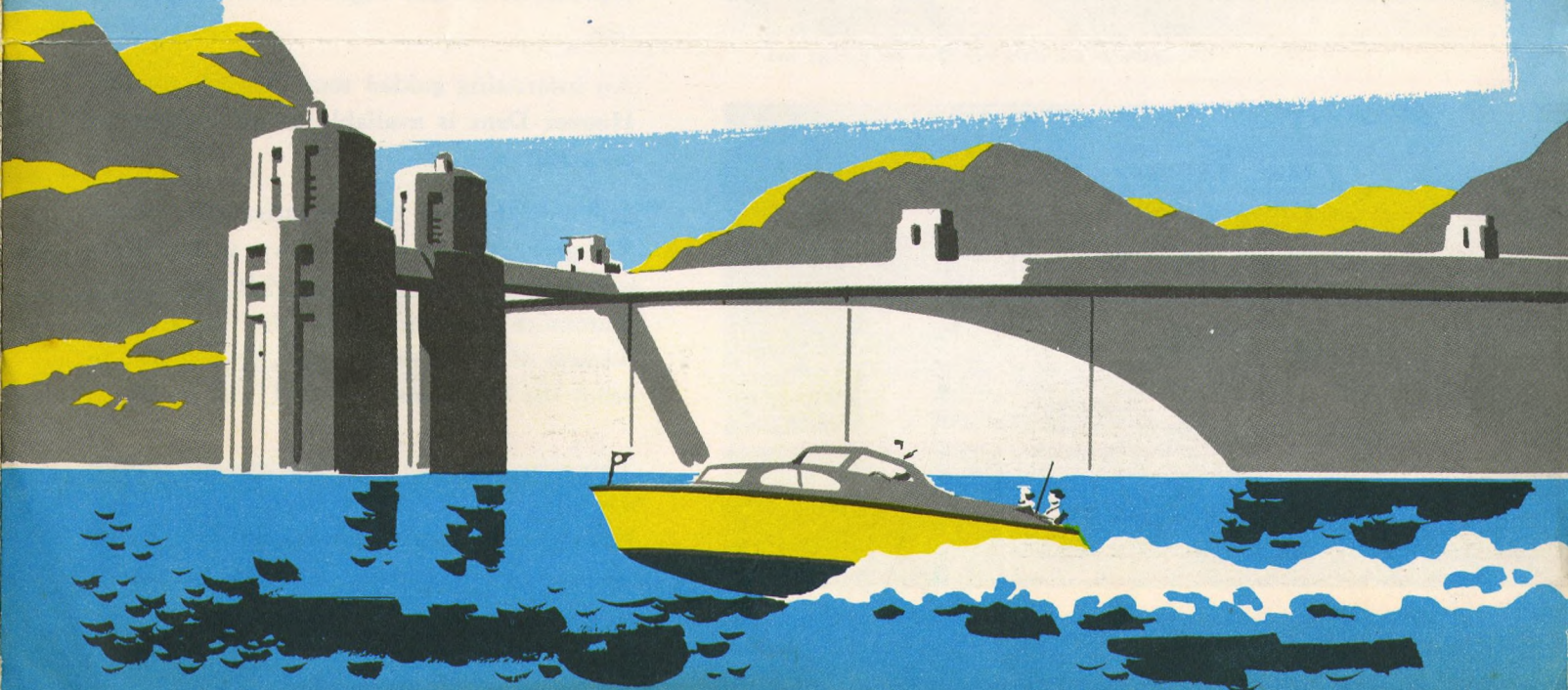


...NOW OFFERS

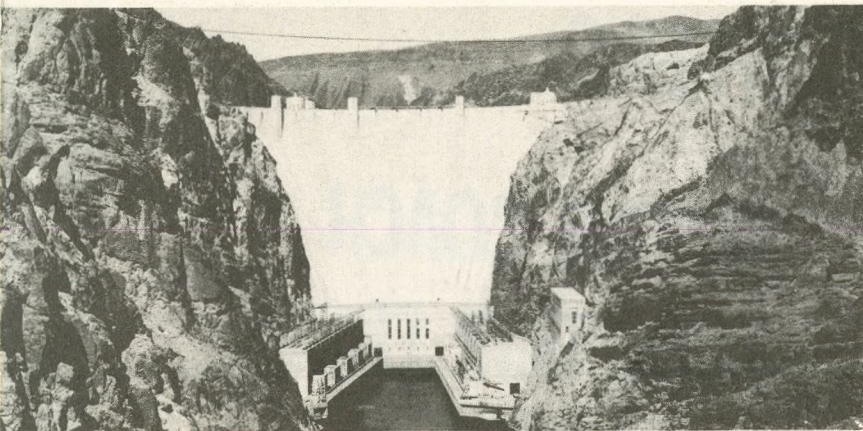
Free

MOTOR COACH
SIDE TRIP FROM
LAS VEGAS to

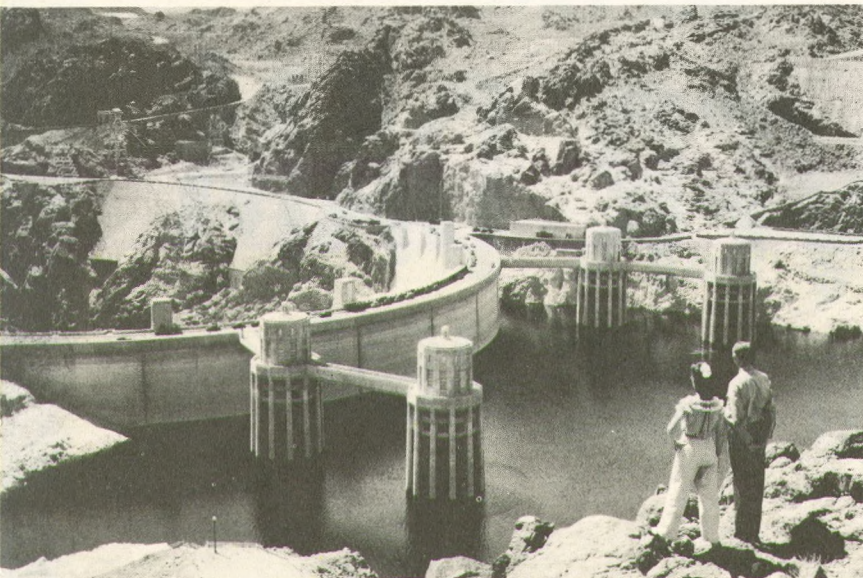
HOOVER DAM AND LAKE MEAD



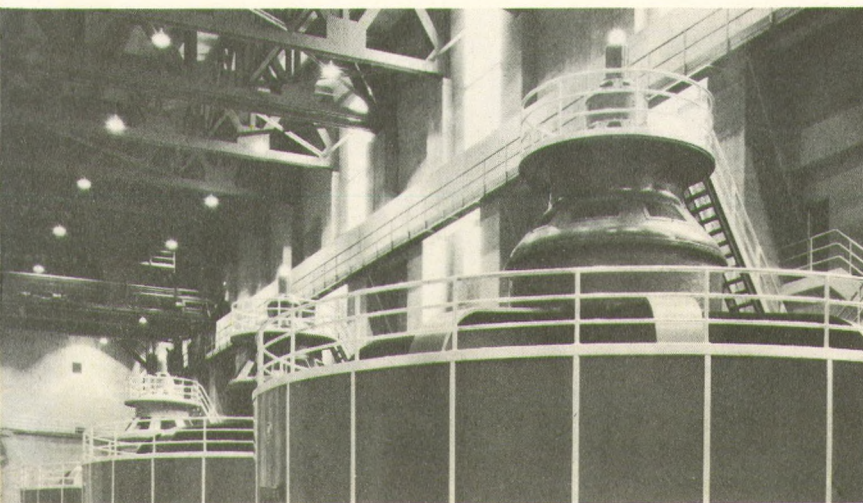
ANOTHER ALLURING OFFER TO HELP BUILD



The immensity of Hoover Dam—the world's highest—is awe inspiring.



The upstream face of the Dam from the Arizona side.



The interior of the Dam—a gigantic powerhouse.

Motor coach side trip from Las Vegas to Hoover Dam-Lake Mead at no extra charge

NOW—in addition to the Las Vegas stopover, at no extra rail fare, for patrons going Union Pacific to or from Los Angeles—you have another unusual year-'round inducement to attract and sell travel prospects.

This free Hoover Dam-Lake Mead side trip is given on tickets routed via Union Pacific between Omaha, Kansas City or St. Joseph, Mo., Leavenworth, Kans., and Daggett, Calif., or beyond. Also via Union Pacific between Huntington, Ore., and Daggett, Calif., or beyond. Via other routes the cost is \$2.50, plus tax, for the Las Vegas-Hoover Dam round trip.

An interesting guided tour through gigantic Hoover Dam is available to all visitors for only 30¢.

Make the most of this attractive offer which will give travelers stopping over at Las Vegas a wonderful opportunity to visit and inspect mammoth Hoover Dam, the engineering miracle of the century. And, in addition, to enjoy the breathless beauty of Lake Mead.

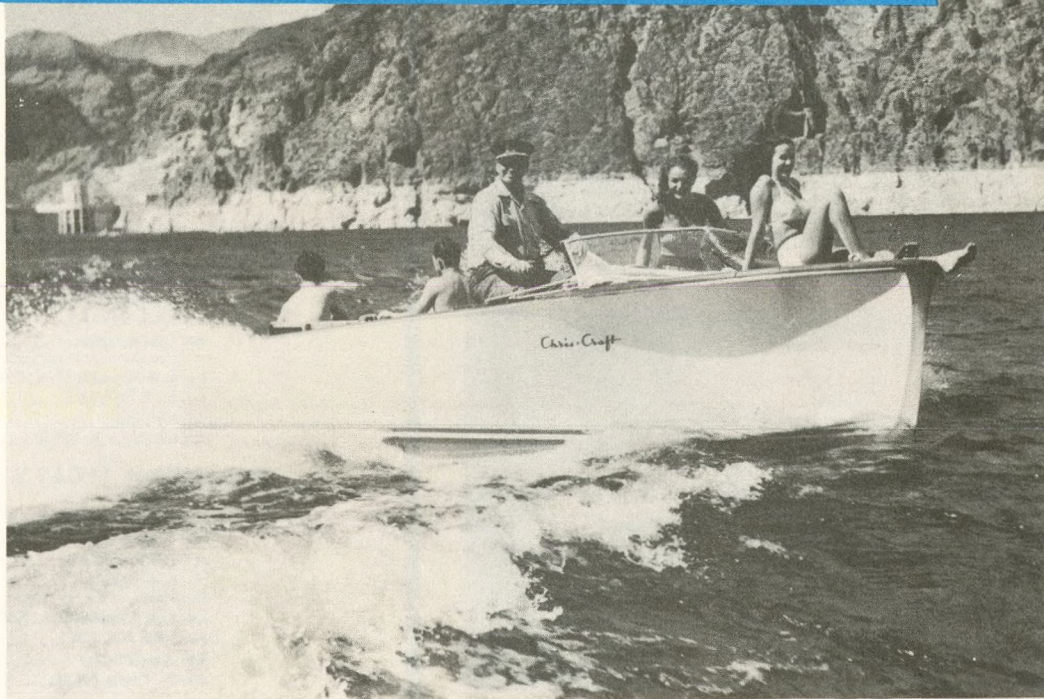
This new free side trip arrangement cancels arrangements outlined in Union Pacific "Detail Information Circular for Ticket and Travel Agents regarding Side Trips to Hoover Dam" dated Jan. 16, 1952.

AD YOUR TICKET SALES !

MOTOR COACH DAILY SCHEDULE

Lv. Las Vegas, Nev..... 9:30 AM
Ar. Boulder City, Nev...10:10 AM
Lv. Boulder City, Nev...10:50 AM
Ar. Hoover Dam.....11:05 AM
Lv. Hoover Dam.....12:30 PM
Ar. Boulder City, Nev... 12:50 PM
Lv. Boulder City, Nev... 1:50 PM
Ar. Las Vegas, Nev..... 2:30 PM

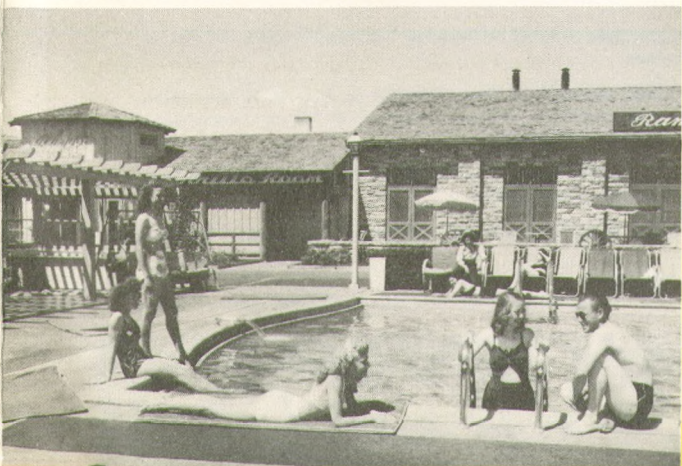
This side trip is operated by Las Vegas-Tonopah-Reno Stage Line, Inc., who honor rail tickets in 37-passenger diesel motor coaches.



Boating and fishing are favorite pastimes of visitors to Lake Mead.



Challenging Dame Fortune is a popular diversion at Las Vegas.
Hotel pools provide refreshing relaxation.

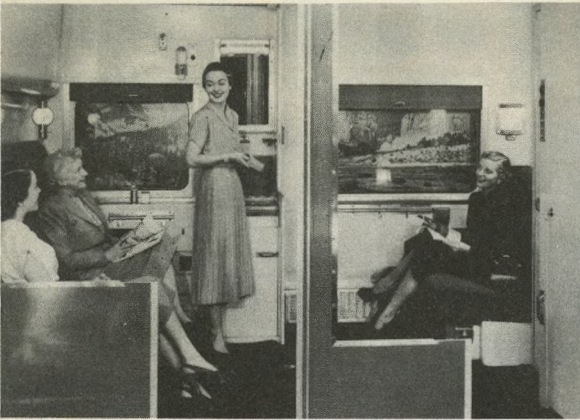


Fabulous LAS VEGAS

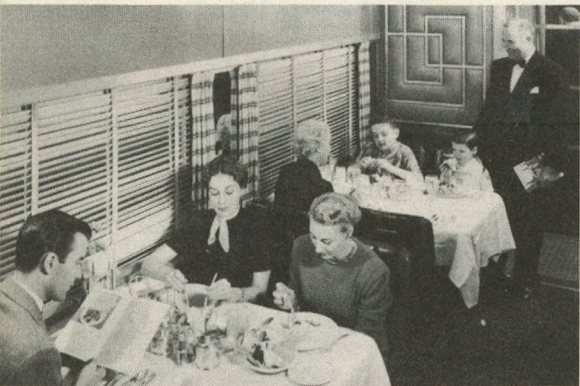
It's an exciting adventure to visit this gay Nevada city, sparkling with round-the-clock entertainment . . . to spend carefree hours in its lavish hotels and glamorous resorts—all air conditioned.

There's no place to equal it in America and when you combine it with the free side trip to Hoover Dam-Lake Mead you have a wonderful "travel package" about which you can really enthuse when talking with prospective patrons.

It will add immeasurably to the pleasure of a rail trip, via Union Pacific, to or from Southern California.



Modern Pullman accommodations provide home-like comfort.



In Union Pacific dining cars you enjoy wonderful foods, gracious service.



Pleasant hours are spent in Club and Lounge cars.



On the Streamliners there's a Cafe-Lounge for Coach passengers.

Variety of Train Service to LAS VEGAS for travelers to or from Southern California

Streamliner "CITY OF LOS ANGELES"

Lv. Chicago (C&NW).....	7:15 pm—1st Day
Lv. Omaha (Un. Pac.).....	3:10 am—2nd Day
Ar. LAS VEGAS.....	2:15 am—3rd Day
Ar. Los Angeles.....	9:00 am—3rd Day
<hr/>	
Lv. Los Angeles (Un. Pac.).....	5:00 pm—1st Day
Ar. LAS VEGAS.....	11:45 pm—1st Day
Ar. Omaha.....	2:40 am—3rd Day
Ar. Chicago (C&NW).....	10:40 am—3rd Day

Streamliner "CITY OF ST. LOUIS"

Lv. St. Louis (Wab.).....	4:00 pm—1st Day
Lv. Kansas City (Un. Pac.).....	9:30 pm—1st Day
Ar. LAS VEGAS.....	7:05 am—3rd Day
At. Los Angeles.....	3:15 pm—3rd Day
<hr/>	
Lv. Los Angeles (Un. Pac.).....	10:30 am—1st Day
Ar. LAS VEGAS.....	6:15 pm—1st Day
Ar. Kansas City.....	7:15 am—3rd Day
Ar. St. Louis (Wab.).....	12:29 pm—3rd Day

ALSO

"LOS ANGELES LIMITED"

Lv. Chicago (C&NW).....	12:01 pm—1st Day
Lv. Omaha (Un. Pac.).....	9:40 pm—1st Day
Ar. LAS VEGAS.....	2:50 am—3rd Day
Ar. Los Angeles.....	10:55 am—3rd Day
<hr/>	
Lv. Los Angeles (Un. Pac.).....	12:01 pm—1st Day
Ar. LAS VEGAS.....	7:40 pm—1st Day
Ar. Omaha.....	4:05 am—3rd Day
Ar. Chicago (C&NW).....	2:00 pm—3rd Day

"GOLD COAST-PONY EXPRESS"

Lv. Chicago (C&NW).....	10:30 pm—1st Day
Lv. Omaha (Un. Pac.).....	10:25 am—2nd Day
Lv. Kansas City (Un. Pac.).....	11:59 pm—1st Day
Ar. LAS VEGAS.....	8:10 pm—3rd Day
Ar. Los Angeles.....	6:30 am—4th Day
<hr/>	
Lv. Los Angeles (Un. Pac.).....	7:00 pm—1st Day
Ar. LAS VEGAS.....	5:00 am—2nd Day
Ar. Kansas City.....	10:30 pm—3rd Day
Ar. Omaha.....	7:50 pm—3rd Day
Ar. Chicago (C&NW).....	7:30 am—4th Day

Convenient overnight sleeping car between Los Angeles and Las Vegas on the Pony Express.

Through Pullman service from New York City on Penn R. R. connecting with Los Angeles Limited at Chicago . . . also on N.Y.C. connecting with "City of Los Angeles" at Chicago.

Through Pullman service from Minneapolis-St. Paul (C&NW) connecting with Los Angeles Limited at Omaha.

ALL TIMES SHOWN ABOVE ARE STANDARD TIMES

AUG 10 1953

LITHO BY KLOPP PRTG. CO., 7-53 OMAHA, NEBR., U. S. A.

UNION PACIFIC RAILROAD