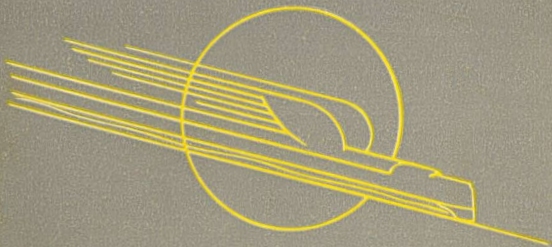


Streamliner
"CITY OF SAN FRANCISCO"





Streamliner

"CITY OF SAN FRANCISCO"

THE Streamliners "City of San Francisco" roll smoothly and swiftly between Chicago and San Francisco, traversing the short, direct Overland Route. They provide daily time-saving transportation combined with many distinctly unusual features that make Streamliner travel a very pleasurable experience.



SOUTHERN PACIFIC

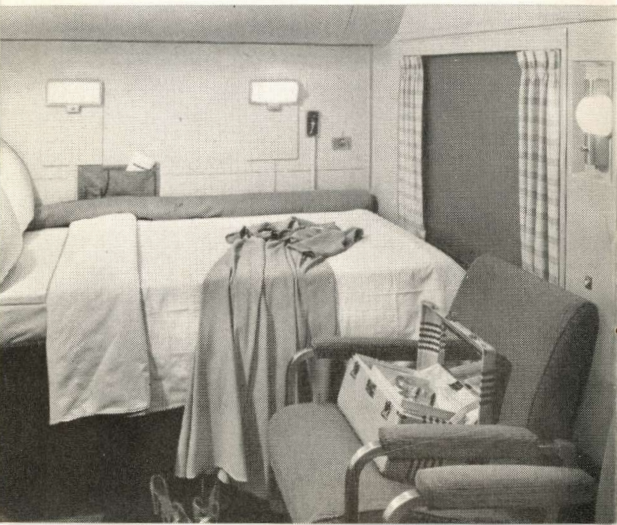
CHICAGO & NORTH WESTERN

UNION PACIFIC

"City of San Francisco"

A RESTFUL BED together with complete washroom facilities assure real homelike comfort. The drawing room can be "made up" to provide an individual bed for one, two or three persons. Your car porter will gladly set up a table for food service, writing or games.

A Drawing Room for the family





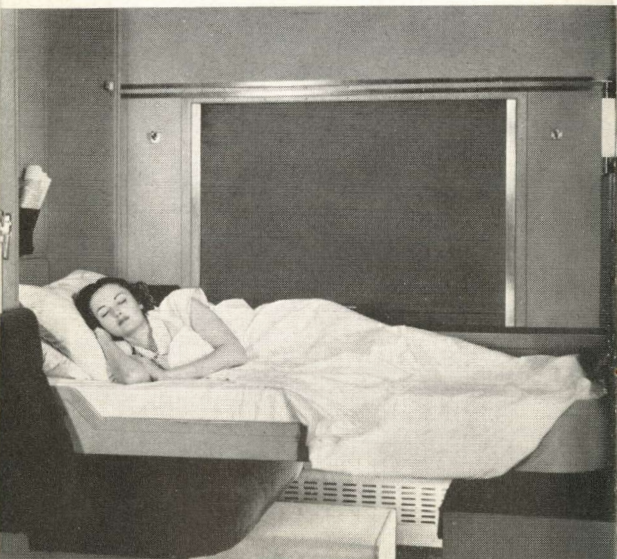
The Bedroom is spacious

LIKE the drawing room, a bedroom contains all the necessary facilities. There are two berths, an upper and a lower. In day-time, the upper berth folds into the wall and the lower is converted into a spacious sofa. A spacious accommodation is achieved when two adjoining bedrooms are opened ensuite.



EXPERIENCED travelers like the Roomette, designed for individual occupancy, with its convenient folding bed and washroom facilities. For day travel, there's a restful lounge seat and room for a table. Business travelers, in particular, find the Roomette an ideal accommodation.

Cut-away view of the popular, economical Roomette





The open section upper and lower berths

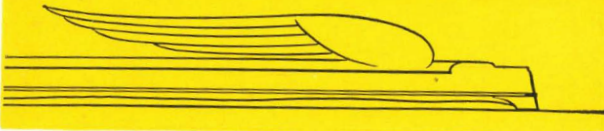
A COMFORTABLE mattress and crisp, white linen invite you to sound sleep. The upper berth occupant need not summon the porter to get up or down. There is a folding ladder available at the side of each berth for use at all times during the night. There are spacious washrooms at either end of the car.

"City of San Francisco"

THE luxurious Club Car for Pullman passengers has deep-cushioned lounges and chairs, writing desk, radio and magazine table with current periodicals. Here you can converse with congenial fellow-travelers . . . join in a card game . . . call for your favorite

There's a friendly atmosphere . . .





beverage. The Club Car also offers a pleasant retreat for those who prefer to remain undisturbed, to relax in a comfortable chair while viewing the passing scenery or becoming lost in an interesting book or magazine.

... and genuine homelike comfort





TRAVELING the short, direct Overland Route between Chicago and San Francisco, the Streamliner "City of San Francisco" crosses



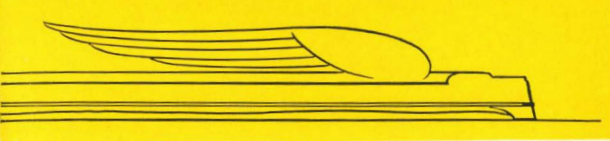
Great Salt Lake just west of Ogden, Utah.
It's a scenic highlight of the trip and a real
thrill to "go to sea by rail."

"City of San Francisco"

THE Club Car is open for occupancy at any hour during the day until late evening. You might like to linger there before luncheon or dinner. You may order a beverage to stimulate your appetite for the full enjoyment of fresh western-grown foods perfectly prepared.

Linger in the Club Car before dinner

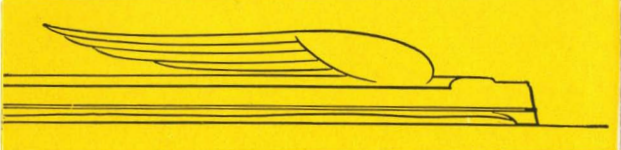




WHEN the chimes sound through the Pullman cars, you can look forward to enjoying excellent food in an attractive dining car, its beauty enhanced by gleaming silver and sparkling glassware. The "City of San Francisco" has long been famed for the high quality of its dining-car meals and deft, thoughtful service.

A beautiful dining room





COACH passengers have been given special consideration on the "City of San Francisco." There's a Cafe Lounge Car for their exclusive use. As the photo shows, the main part of the car serves as a Diner set apart from the Lounge by a glass partition. The meals and service here are something to write home about.

The luxurious Cafe Lounge Car



"City of San Francisco"

PRACTICALLY all "City of San Francisco" Coach seats are equipped with a leg-rest which folds under the seat when not in use. All have adjustable, reclining backs for day and night comfort. Pillows may be procured from the porter for a small charge. With the car's lights dimmed to a soft glow at night, you're assured of sound, restful sleep.

Most units of the "City of San Francisco" have coaches equipped with comfortable leg rest seats




"City of San Francisco"



Coach travel is comfortable and economical


THE photo above shows a full length view of one of the spacious Streamliner Coaches. When the equipment is obtainable all of the "City of San Francisco" Streamliners will be equipped with Coach seats having the most modern type of padded leg-rest as shown on the preceding page. All "City of San Francisco" Coach seats are reserved in advance.



COACHES on the Streamliner "City of San Francisco" have rest rooms for men and for women. They are equipped with comfortable chairs where you can lounge and enjoy a smoke. Large mirrors, plenty of hot water, soap and cloth towels make for good living enroute.

View across downtown San Francisco to the Bay Bridge





EASTBOUND passengers, traveling beyond Chicago, and changing stations there, may avoid the inconvenience of carrying as well as checking and rechecking hand luggage there. Ask porter for luggage checks and information concerning this service.

The towering Golden Gate Bridge



"City of San Francisco"

Overland Route Train Service

The splendid trains listed below provide fast, dependable service every day over the historic and scenic Overland Route, the shortest between Chicago and San Francisco:

STREAMLINER
"CITY OF SAN FRANCISCO"
(*extra fare*)

SAN FRANCISCO OVERLAND
(*Reserved seat coaches—Pullmans*)

GOLD COAST
(*Coaches—Pullmans*)



CHICAGO & NORTH WESTERN SYSTEM
UNION PACIFIC RAILROAD
SOUTHERN PACIFIC LINES

