



Streamliner
Service
to and from
California





Suggest Low-Cost COACH Travel to Budget Minded Patrons

Note the full-length comfort of these new scientifically designed Coach seats with which Streamliner Coaches are equipped. The restful, padded leg-rest folds under the seat when not in use. Thus, your patrons can not only save dollars but be assured of night-and-day comfort when they travel "Coach" via Union Pacific.



We suggest you show the photo above to prospective travelers.

Going to or from Los Angeles, via Union Pacific, your patrons can stop over at exciting

LAS VEGAS, NE

at no extra rail fare. This lively western city offers a delightful winter climate. Near by is spectacular Hoover Dam and beautiful Lake Mead. An interesting ride from Las Vegas by bus or car. IT'S A REAL TRAVEL BARGAIN!

Daily Streamliners between CHICAGO - ST. LOUIS and CALIFORNIA

"City of Los Angeles"

No faster train between Chicago and Los Angeles. Light-weight Sleeping Cars with sections, drawing rooms, compartments, bedrooms and roomettes. Dining and Club Lounge Cars. Buffet Lounge Car for Coach passengers. All Coach seats reserved. An extra-fare train.

"City of San Francisco"

Fastest train between Chicago and San Francisco. Light-weight equipment with sleeping car accommodations similar to the "City of Los Angeles." Dining and Club Cars. Also Cafe Lounge for Coach passengers. Coach seats reserved. Extra fare.

"City of St. Louis"

Overnight service between St. Louis-Kansas City and Denver with through car service to West Coast terminals. Sections, bedrooms, roomettes and reserved Coach seats. Dining and Club Lounge Cars. No extra fare.

SCHEDULE (Example) Westbound

Lv. Chicago (C. & N. W.)	7:15 PM	(Fri.)
Ar. Salt Lake City (U. P.)	7:10 PM	(Sat.)
Ar. Los Angeles	9:00 AM	(Sun.)

Eastbound

Lv. Los Angeles (U. P.)	5:00 PM	(Fri.)
Ar. Salt Lake City	8:40 AM	(Sat.)
Ar. Chicago (C. & N. W.)	10:45 AM	(Sun.)

SCHEDULE (Example) Westbound

Lv. Chicago (C. & N. W.)	7:00 PM	(Fri.)
Ar. Ogden (U. P.)	6:05 PM	(Sat.)
Ar. San Francisco (S. P.)	9:15 AM	(Sun.)

Eastbound

Lv. San Francisco (S. P.)	5:00 PM	(Fri.)
Lv. Ogden (U. P.)	9:55 AM	(Sat.)
Ar. Chicago (C. & N. W.)	10:45 AM	(Sun.)

SCHEDULE (Example) Westbound

Lv. St. Louis (Wab.)	4:00 PM	(Fri.)
Lv. Kansas City (U. P.)	9:30 PM	(Fri.)
Ar. Denver	7:35 AM	(Sat.)
Ar. Salt Lake City	10:45 PM	(Sat.)
Ar. Los Angeles	4:00 PM	(Sun.)
Ar. San Francisco (S. P.)	6:50 PM	(Sun.)
Ar. Portland (U. P.)	4:30 PM	(Sun.)
Ar. Tacoma	8:05 PM	(Sun.)
Ar. Seattle	9:15 PM	(Sun.)

Eastbound

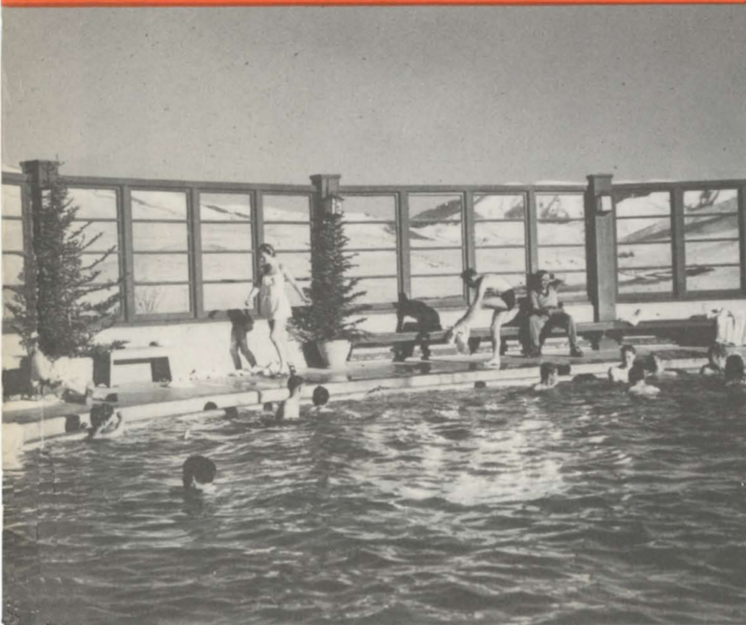
Lv. Seattle (U. P.)	11:30 PM	(Fri.)
Lv. Tacoma	1:00 AM	(Sat.)
Lv. Portland	8:10 AM	(Sat.)
Lv. San Francisco (S. P.)	11:00 AM	(Sat.)
Lv. Los Angeles (U. P.)	11:00 AM	(Sat.)
Ar. Denver	7:45 PM	(Sun.)
Ar. Kansas City	7:45 AM	(Mon.)
Ar. St. Louis (Wab.)	1:00 PM	(Mon.)

Pacific.

V.

city has
spectacular
a short,
or rented





IT'S HAPPY HOLIDAY TIME

AT UNION PACIFIC'S

Sun Valley
IDAHO

Nice thing about it, when you recommend Sun Valley, you **know** your patrons will be pleased. If skiing's their sport, wonderful! Here they'll find the slopes they have been yearning for—long runs, short runs, steep and gradual, with eight electric chair lifts making possible more downhill skiing each perfect day.

AMERICA'S FAVORITE SKI FEATURE

"Learn to Ski" WEEKS

More popular than ever, this attraction returns for nine full weeks. January 7-13, 14-20, 21-27, Jan. 28-Feb. 3. March 4-10, 11-17, 18-24, 25-31, April 1-7. Chalet accommodations, all meals, ski lessons, ski lift rides, ice skating . . . 7 full days and 6 nights . . . for the one low price of . . . \$75

\$75

TRAIN SERVICE FROM CHICAGO

Daily Example

"City of Portland"	Lv. Chicago	5:30 PM (Fri.)
	Ar. Sun Valley	9:50 PM (Sat.)
Gold Coast	Lv. Chicago	8:10 PM (Fri.)
	Ar. Sun Valley	2:00 PM (Sun.)

TRAIN SERVICE LOS ANGELES - SUN VALLEY

Daily Example

Lv. Los Angeles . . .	7:30 PM (Fri.)
Lv. Salt Lake City .	8:00 PM (Sat.)
Ar. Sun Valley . . .	7:30 AM (Sun.)

Daily Example

Lv. Sun Valley . . .	10:30 PM (Fri.)
Ar. Salt Lake City .	9:15 AM (Sat.)
Ar. Los Angeles . .	7:00 AM (Sun.)

A 10-Section, 6-Double Bedroom sleeping car, daily during winter season, between Los Angeles and Sun Valley. First car from Los Angeles Dec. 19; first car arrives and leaves Sun Valley Dec. 21.

FOR RESERVATIONS Address W. P. Rogers, Gen'l Mgr., Sun Valley, Idaho, or General Passenger Traffic Mgr., Union Pacific Railroad, Omaha 2, Nebr.; or ask your nearest Union Pacific representative.