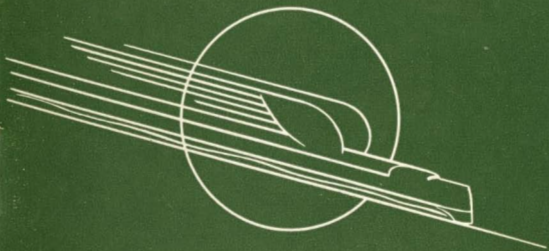


Streamliner
"CITY OF PORTLAND"





Streamliner



"CITY OF PORTLAND"



NORTH WESTERN
UNION PACIFIC



Magnificent Mt. Hood near Portland

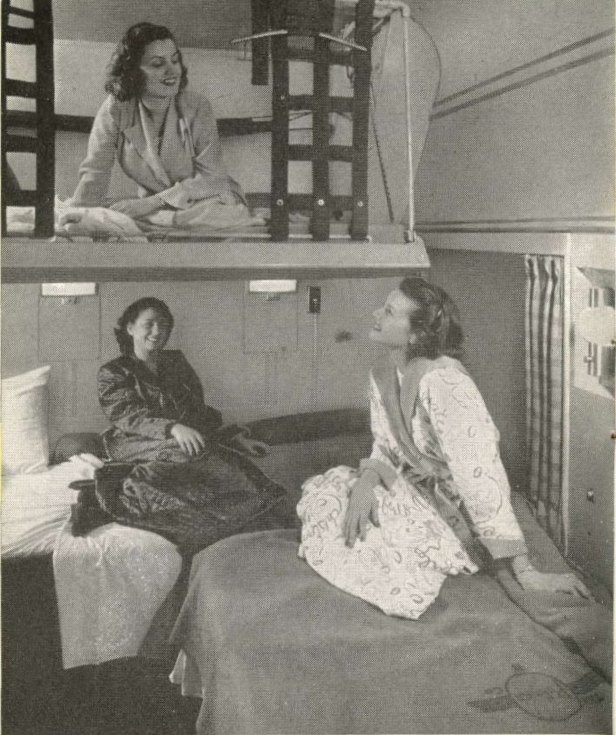
Streamliner "CITY OF PORTLAND" in the Columbia River Gorge



"CITY OF PORTLAND"



THE Streamliner "CITY OF PORTLAND" was the first high-speed, streamlined train to operate between the East and the Pacific Coast. Originally it offered departures every fifth day from each terminal, and only a fortunate few could be accommodated. The first train is long forgotten but its popular successors now daily carry hundreds of happy travelers as they sweep along over the scenic and historic Oregon Trail, and for some two hundred miles skirt the placid and beautiful Columbia River. Outstanding scenery, fine travel accommodations, excellent service and good food are reasons why the "CITY OF PORTLAND" remains the choice of experienced travelers to and from the Pacific Northwest. There is no extra fare.



Homelike comfort in the Drawing Room

SLEEPING CARS on the *Streamliner* are all of late design, and offer a wide choice of Pullman accommodations. In addition to Drawing Rooms and Compartments, there are Bedrooms, Roomettes, Lower and Upper Berths. All of these em-



The Double Bedroom is spacious

body the most modern developments, created by top designers for the convenience and comfort of sleeping car passengers.

The Compartment, Drawing Room, and Bedroom, all have upper and lower berths, and the

"CITY OF PORTLAND"



Drawing Room has a third bed which folds away into the wall when not in use. The comfortable lower makes up into a spacious sofa for daytime use. Some Bedrooms are separated by a folding partition which, when thrown open, permits the two rooms to be used en suite. The popular Roomette is a small private room designed for individual occupancy; the convenient folding bed is converted, when not in use, into a lounge seat.

The popular Roomette





The open section Upper and Lower

All of the private rooms contain complete toilet facilities, electric outlets, mirrored cabinet for toilet articles, wardrobe, and ample luggage space. In the open section, sleeping car passengers may obtain comfortable upper or lower berths.



The main Dining Car is decorated in the modern mode

● ONE of the highlights of a trip on the "CITY OF PORTLAND" is dining in the charming atmosphere of the *Streamliner* Dining Car. Beautiful linens, and sparkling silver, fresh foods skill-



fully prepared by expert chefs, and deft, courteous service—all contribute to your pleasure. If you prefer, you may have your meals served in your Pullman space.

"CITY OF PORTLAND"



PPULLMAN PASSENGERS enjoy the roomy Lounge Car, with its restful overstuffed chairs and divans. A writing desk with distinctive Streamliner stationery, as well as current magazines, radio for spot news and soft music, add to the traveler's enjoyment.

A popular meeting place





A living room on wheels

Card table sections invite a friendly game, and a smartly uniformed waiter will bring your favorite beverage, cigars or cigarettes. Venetian blinds and drapes at the windows complete the home-like atmosphere.

"CITY OF PORTLAND"



THERE is a cafe-lounge car for Coach passengers, where famous Streamliner foods and service are provided in variety. Snacks and refreshing beverages may be obtained between meals. Soft colors, drapes, carpeting, and venetian blinds create a homelike atmosphere.

Coach passengers eat in this distinctive Cafe-lounge car





The lounge for Coach passengers

SEPARATED from the dining section by a decorative glass partition is the friendly lounge where time passes all too quickly in conversation with fellow passengers, reading current magazines, relaxing in comfort. There's a writing desk with distinctive Streamliner stationery, and a radio.



Coaches are of latest design

COACH PASSENGERS on the *Streamliner*, "CITY OF PORTLAND" enjoy real travel luxury at low cost. For increased comfort the deep-cushioned individual seats are easily adjusted to a restful, reclining position. The seats in all regularly assigned coaches are equipped with padded leg-rests so you may stretch out full length and be completely comfortable night and day. Pillows may be obtained from the porter for a small charge, making

"CITY OF PORTLAND"



it possible to enjoy sound sleep . . . with lights dimmed to a soft glow. Large overhead racks end storage space at either end of the car provide means for keeping luggage out of the way. You rest as you ride when you travel in Coach or sleeping car—on the "CITY OF PORTLAND."

The last word in low-cost travel comfort





Spacious rooms in Coaches, where you may "freshen up" or enjoy a smoke

IN the Coaches there are spacious dressing rooms for men and for women. Large mirrors, fluorescent lighting, plenty of hot water and clean towels enhance the facility of these rooms.



EASTBOUND passengers, traveling beyond Chicago, and changing stations there, may avoid the inconvenience of carrying as well as checking and rechecking hand luggage there. Ask the porter for luggage checks and information concerning this service.

Other Fine Streamliners . . .

CITY OF DENVER

Chicago-Omaha-Denver

CITY OF LOS ANGELES

(*extra fare*)

Chicago-Omaha-Salt Lake-Los Angeles

CITY OF SAN FRANCISCO

(*extra fare*)

Chicago-Omaha-Ogden-San Francisco

All of these trains operate on a fast,
daily schedule between the cities shown.



Vacationlands We Serve . . .

Colorado

California

The Pacific Northwest

Yellowstone-Grand Teton National Parks

Zion-Bryce-Grand Canyon National Parks

Las Vegas-Hoover Dam-Lake Mead

Recreational Area

Sun Valley, Idaho

Western Dude Ranches

CHICAGO & NORTH WESTERN SYSTEM

UNION PACIFIC RAILROAD



