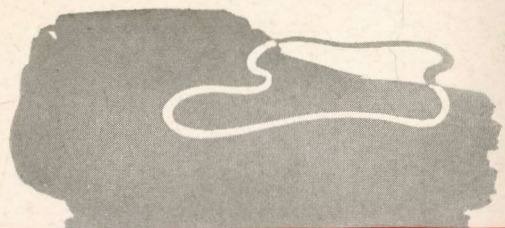


Streamliner
"CITY OF DENVER"



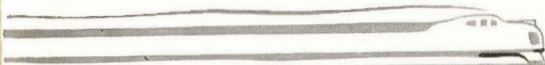


N O R T H W E S T E R N
U N I O N P A C I F I C



Streamliner

"CITY OF DENVER"



STRIKINGLY beautiful in all appointments and providing every convenience for the comfort of passengers, the twin streamliners "City of Denver" are tremendously popular with travelers. The "City of Denver" spans the 1,048 miles between Chicago and Denver in just a pleasant overnight run.

Offering modern, deep - cushioned coaches, a variety of sleeping car accommodations, two spacious lounge cars, and a sparkling dining car, the "City of Denver" fills every requirement of the traveler. Air-conditioned throughout, of course, guests are assured a comfortable and enjoyable ride no matter what the weather or the temperature.

A happy combination of time-saving speed, courteous personnel and fine equipment makes the "City of Denver" the choice of folks who want the best in rail transportation.

OVERNIGHT • EVERY NIGHT



The Coaches

The coaches on the "City of Denver" provide the ultimate in comfort for coach passengers. There is plenty of leg room and seats recline individually to several positions. Pillows may be procured from the porter for a small charge, and with overhead lights dimmed at night, sound, restful sleep is assured. Each seat back

O V E R N I G H T • E V E R Y N I G H T



has a concealed serving tray from which guests enjoy hot meals or sandwiches and snacks served from the dining car. They may, if desired, take meals in the dining car. A built-in radio, with speakers in both coaches, provides entertainment. A courteous, uniformed porter assists with luggage and keeps the cars neat and orderly at all times.



Rest Rooms

Sleeping cars and coaches on the "City of Denver" have large and well-arranged rest rooms for men and for women. A special effort has been made to inject light and color into these rooms, as well as to provide them with every appointment for passengers' convenience and well-grooming. Large mirrors, tubular,



fluorescent lighting, also porcelain wash-bowls and dental bowls add to the facility of these rooms. Electric outlets for curling irons and razors are thoughtfully situated. In the women's rest rooms a long dressing table along one wall faces a large mirror. There is always an ample supply of cloth towels and soap, as well as hot and cold water.



The Dining Car

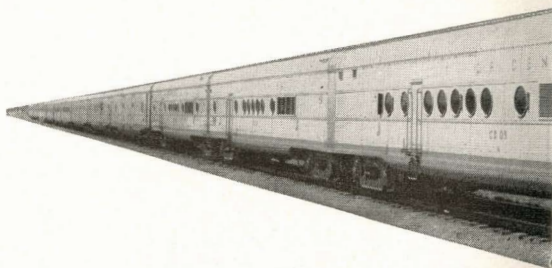
Next behind the coaches is the dining car. The moment you step into its charming interior you are aware of an air of refinement. From the crisp and spotless napery to the gleaming silver and the smiling steward who seats you, everything suggests good living and the leisurely enjoyment of fine food. Streamliner chefs are experts with many years of experience so that whether you partake



of a snack or a full course dinner, you will enjoy it to the last tasty morsel. The service is prompt and courteous.

The Lounge Car

Situated right behind the dining car is the mid-train lounge car. Comfortable easy chairs and settees invite you to linger here for a cocktail, perhaps, before dinner. After dinner it is a popular rendezvous for reading, listening to the radio or pleasant conversation before retiring.



O V E R N I G H T · E V E R Y N I G H T



The Mid-Tr



Between CHICAGO · DENVER



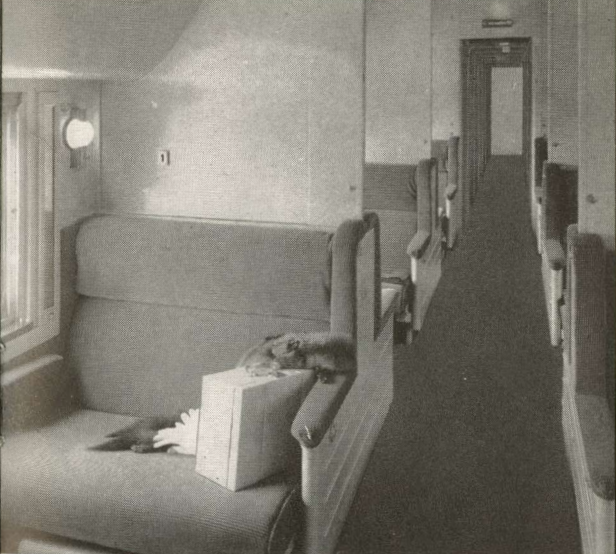
ain Lounge



The Roomette

Roomette equipment consists of a convenient folding bed, converted during the day into a comfortable lounge seat . . . private washbowl and toilet facilities . . . wardrobe for clothes . . . mirrored cabinet for toilet articles, also individual temperature control. Hand luggage is stored overhead. There is ample space for lounging or undressing before the bed is lowered for the night.

O V E R N I G H T · E V E R Y N I G H T



The Open Section

The open section—a popular, moderate-cost accommodation—consists of a lower and an upper berth. Permanent headboards between sections assure privacy even in the daytime. Upper berths are provided with safety ladders which make getting in and out easy. At either end of the car are large washrooms. On the "City of Denver" there are two cars having 12 open sections each.



The Bedroom

The bedroom is a private room having an upper and a lower berth, the latter making into a spacious daytime sofa. There are private washbowl and toilet facilities, fan, full-length mirror and temperature control; a mirrored cabinet for toilet articles; a wardrobe, and ample luggage space. There are 13 bedrooms on the "City of Denver."

Compartment • Drawing Room

The compartment has all of the features of the bedroom, and in addition a lounge chair which folds out of the way at night. The drawing room is more spacious, having three beds, including upper, lower and sofa. Toilet and washbowl facilities are in an enclosed annex. Two lounge chairs give living room comfort.



Between CHICAGO • DENVER



Observation-Bedroom Car

This beautiful car, the last in the train, contains six bedrooms, two card sections and a spacious lounge-observation room. There are eight chairs and four settees of very attractive design and most comfortable. Magazine tables with newspapers and the latest periodicals in attractive

O V E R N I G H T • E V E R Y N I G H T



leather binders, give this car the air of a smart club. A writing desk, equipped with distinctive Streamliner stationery, pen and ink, adjoins one card section. Directly across the car is a handsome radio of latest design. On the rich wood-veneer bulkhead in the forward end of the room are two round mirrors set with peach-colored glass which lend a brilliant effect.

Between CHICAGO • DENVER



Other Features

Every modern device conducive to safety is incorporated in this splendid train. Supreme riding comfort at high speed is obtained through an ingenious method of spring suspension. The body of the train is painted an attractive armour yellow—selected because it can be seen at great distances—with a roof of autumn brown and red trimming.

Other Fine Streamliners . . .

CITY OF LOS ANGELES (*extra fare*)

Chicago-Omaha-Salt Lake-Los Angeles

CITY OF PORTLAND

Chicago-Omaha-Portland

CITY OF SAN FRANCISCO (*extra fare*)

Chicago-Omaha-Ogden-San Francisco

All of these trains operate on a fast daily schedule between the cities shown.

Vacationlands We Serve . . .

Colorado

California

The Pacific Northwest

Yellowstone-Grand Teton National Parks

Zion-Bryce-Grand Canyon National Parks

Las Vegas-Hoover Dam-Lake Mead

Recreational Area

Sun Valley, Idaho

Western Dude Ranches

CHICAGO & NORTH WESTERN SYSTEM

UNION PACIFIC RAILROAD

