



Los
Angeles
LIMITED

Los Angeles Limited

LUNCHEON A LA CARTE

Shrimp Cocktail 60
Ripe Olives 35

Fruit Cocktail 50
Crisp Radishes 30

Consomme, Cup, Hot or Jellied 30

Today's Soup, Cup 30; Tureen 45

Available Fresh Fish

Domestic Sardines 75

Broiled Lamb Chops (2) 1.50; (1) 1.00
Fried Young Chicken, Country Gravy 1.30
Browned Corned Beef Hash with Poached Egg 1.05
Baked Beans, Boston Style, Brown Bread 80
Broiled Sirloin Steak 2.75

Bacon and Eggs 1.25

Ham and Eggs 1.25

Ham, Fried or Broiled 1.25; Half Portion Ham 70

Bacon 1.10; Half Portion Bacon 60

Poached Eggs on Toast (2) 70

Boiled, Scrambled, Fried or Shirred Eggs (2) 45

Plain Omelet 60

Spanish Omelet 90

Ham, Cheese or Jelly Omelet 85

Hashed Browned or Saute Potatoes 25

String Beans 25

Garden Spinach with Egg 30

Green Peas 25

Asparagus on Toast 55

THE SALAD BOWL 60

Head Lettuce 35

Potato Salad 30

Sliced Tomatoes 50

Chicken Salad 1.00



Cheese Sandwich 40
Chicken Sandwich 85

Bacon and Tomato Sandwich 60

Tongue Sandwich 50
Ham Sandwich 50

Bread and Butter 15

Milk Toast 45

Toast, Dry or Buttered 20

Ice Cream 30; with Wafers 40
Camembert Cheese 35

Canned Fruits 35
Blue Cheese 35

Milk (Individual Bottle) 15
Coffee (Pot) 25
Iced Coffee (Pot) 25


Buttermilk 15
Cocoa (Pot) 30
Instant Sanka (Pot) 25

Postum (Pot) 25
Tea (Pot) 25
Iced Tea (Pot) 25

Parents may share their portions with children without extra charge.

Our Stewards are keenly interested in maintaining the finest service and will greatly appreciate your expressions as to features you most enjoy as well as your suggestions for improvement.





Los Angeles Limited

Luncheon Suggestions

Please Order by Number with Items Desired

NO. 1 — \$1.35

CHEF'S SPECIAL SALAD BOWL

A Combination of Crisp Hearts of Lettuce, Ripe Tomatoes, Radishes and other Spring Vegetables, Served thoroughly chilled with Shredded Tender Smoked Tongue, Baked Ham and Chicken Breast, tossed together with the Chef's Own Special Garlic Flavored Salad Dressing

BREAD AND BUTTER OR CRACKERS

ICE CREAM AND WAFERS

FRUIT JELL-O

CHEESE AND CRACKERS

COFFEE

TEA

MILK

BUTTERMILK

ICED TEA

ICED COFFEE

NO. 2 — \$1.50

PUREE OF TOMATO SOUP OR CHILLED VEGETABLE JUICE

CHICKEN A LA KING ON TOAST POINTS

MASHED POTATOES

ICE CREAM AND WAFERS

FRUIT JELL-O

CHEESE AND CRACKERS

COFFEE

TEA

MILK

BUTTERMILK

ICED TEA

ICED COFFEE

NO. 3 — \$1.45

PUREE OF TOMATO SOUP OR CHILLED VEGETABLE JUICE

OMELET WITH DICED HAM

HASHED BROWNED POTATOES

ICE CREAM AND WAFERS

FRUIT JELL-O

CHEESE AND CRACKERS

COFFEE

TEA

MILK

BUTTERMILK

ICED TEA

ICED COFFEE

NO. 4 — \$1.30

PUREE OF TOMATO SOUP OR CHILLED VEGETABLE JUICE

INDIVIDUAL BAKED MEAT PIE

MASHED POTATOES

BREAD AND BUTTER

ICE CREAM AND WAFERS

FRUIT JELL-O

CHEESE AND CRACKERS

COFFEE

TEA

MILK

BUTTERMILK

ICED TEA

ICED COFFEE

Instant Sanka will be substituted upon request.

Our Children's Menus Offer Special Selections for Little Folks
Meal Service by Waiter Outside of Dining Car—50c for Each Person Served

Prices shown subject to sales tax in States where applicable.

H. A. HANSEN, Manager Dining Car and Hotel Department,
Union Pacific Railroad, Omaha, Nebr.

Envelope for mailing this menu will be
furnished by steward upon request

2E&1W (1&2)
6-1-49

SPECIAL PLATE LUNCHEON \$1.25

Southern Roast Beef Hash
Served Piping Hot en Casserole
Bread and Butter
Select Canned Fruit

Coffee Tea Milk

NO SUBSTITUTIONS ON PLATE MEALS

1&2

Cup of Soup or Small Plate of Salad Served with Above Plate Luncheon,
Each 15c Additional

THE NATIONAL BUREAU OF STANDARDS

WASHINGTON, D. C. 20540

DEPARTMENT OF COMMERCE

UNITED STATES OF AMERICA

NO. 100-100000-100

100

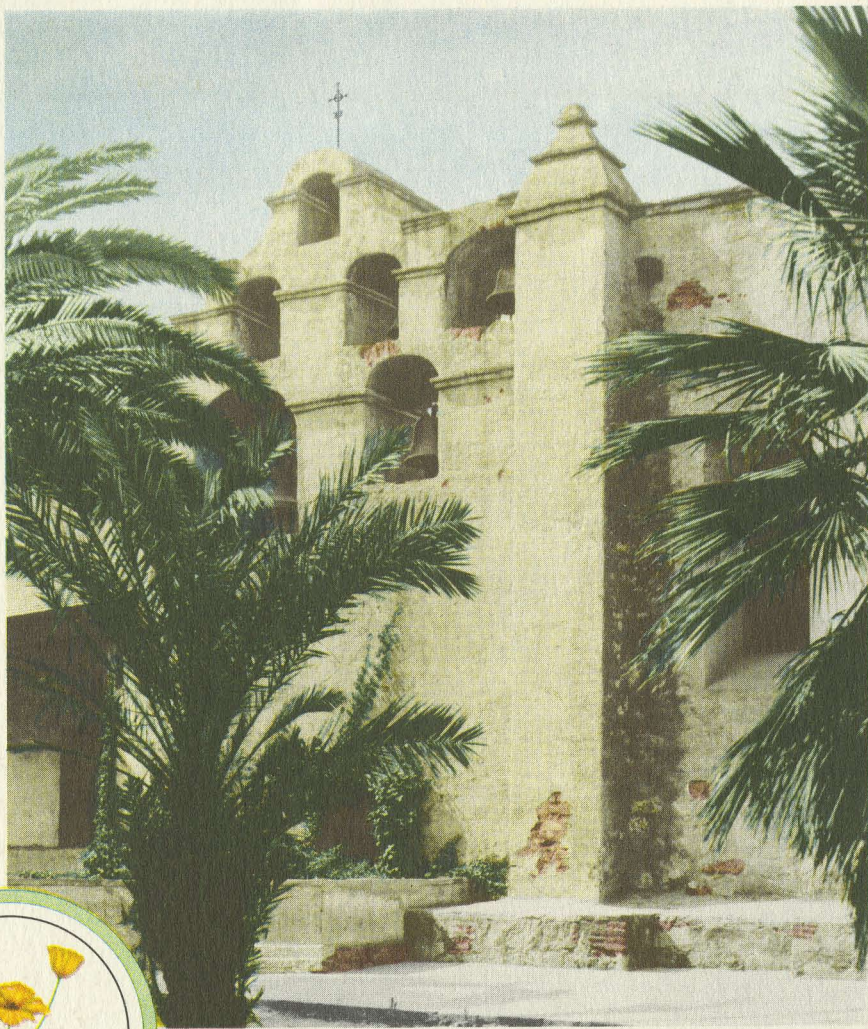
100

100

NO. 100-100000-100

UNITED STATES OF AMERICA

NO. 100-100000-100



Historic San Gabriel Mission, near Los Angeles, California.

California Poppy
(*Eschscholtzia californica*)



State flower and best known of all California wild flowers. Blossoms are two to three inches in diameter, deep golden yellow. Plants grow about a foot high. Blooms February to June.

THE name "California" was taken from Ordonez de Montalvo's romance of chivalry, *Las Sergas de Esplandian* (Madrid, 1510), in which is told of black Amazons ruling an island of this name "to the right of the Indies, very near the quarter of the terrestrial paradise."

Perhaps the charm of our California lies in the fact that it means many things to many people. Here are orange groves and mountains; flowered valleys and desert lands; historic missions and Movieland; the sparkling waters of a great sea and virgin forests with mighty trees older than any other living thing; then of course there is metropolitan city life for those who prefer that.

Contrasts? Yes, fascinating, never ending contrasts. There are even places where one may actually look from sea to desert and from snow to orange groves simply by turning his head!

The Los Angeles Limited, with the California Poppy (state flower) as its motif, gives the traveler a foretaste and aftertaste of the atmosphere and charm of California. It, too, means many things to many people, and not the least of these is COMFORT.