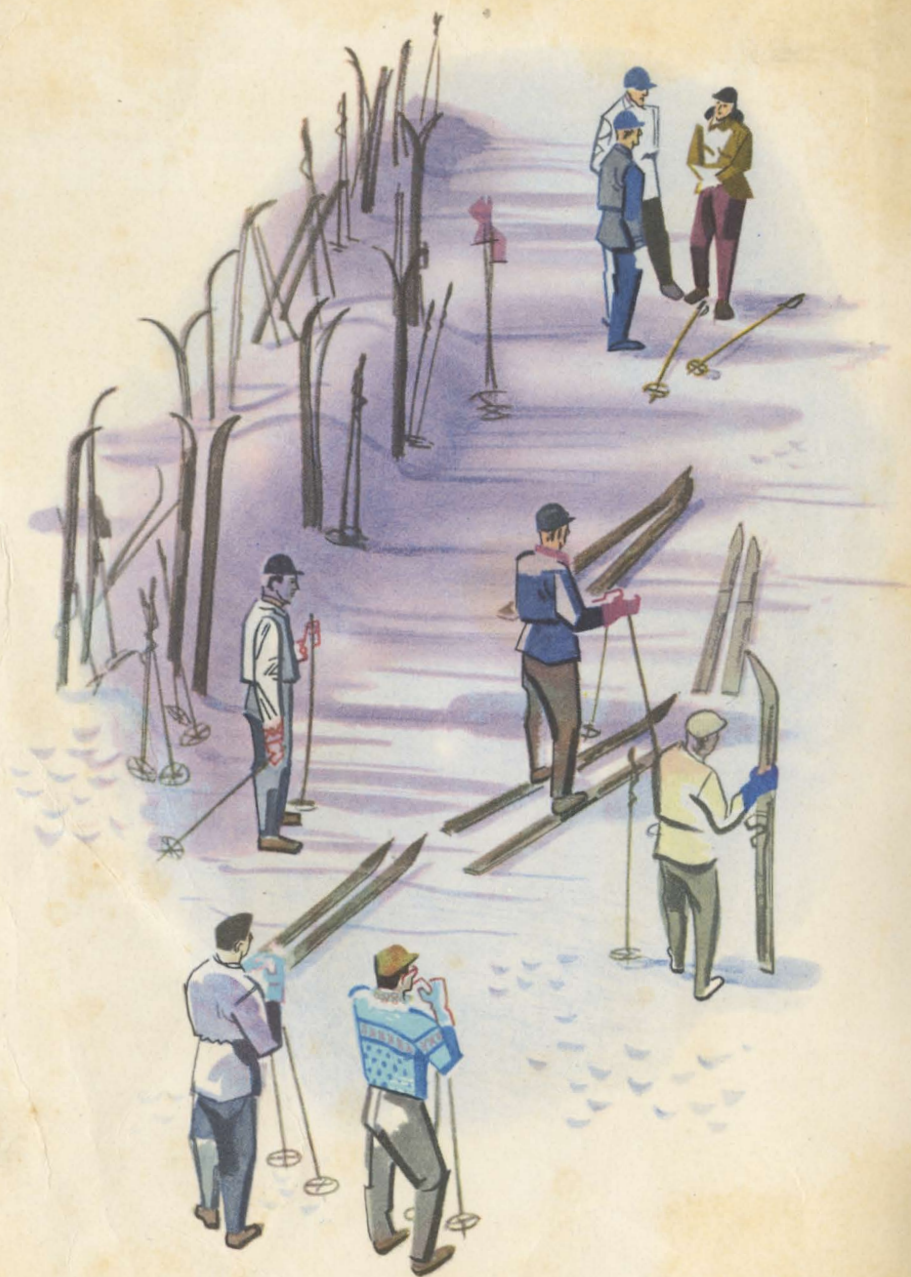


Snow Sports

IN WESTERN WONDERLANDS



UNION PACIFIC RAILROAD



Snow Sports

in

WESTERN WONDERLANDS

To thousands of Americans, the West has long been famous as a summer vacation haven. As a *winter* sports region, however, its popularity has been growing by leaps and bounds only in recent years.

Thousands of square miles of varied mountain terrain, blanketed with deep "powder" snow, which comes early and stays late, makes it the goal of skiers who look for and expect "perfection". Sleighing, bobsledding, tobogganing, skjoring and the other snow sports enjoy wide popularity. Skating on natural lakes and artificial ice rinks of glassy smoothness lures devotees of this sport.

Accommodations ranging from small inns and ski lodges to continental-type hotels of "big city" luxury dot the winter sports areas of the West. You are assured of just the type accommodations you desire at the price you wish to pay.

So, plan now to experience the thrills of a winter "Snow Sports" vacation in the glorious, sun-drenched West. You will wear with pride your flattering "summer" tan, acquired under a winter sun, as an outward indication of your increased vitality and renewed zest for life.



NOTE: This book tells you where the outstanding winter sports resorts of the West are located, and briefly describes them. Numerals opposite description of each resort or area enable you to locate it, approximately, on the map, inside the back cover.

California



The snow sports areas of California are situated on the peaks, the slopes and in the high valleys of the Sierra Nevada Mountains in the central and north portions of the state, and in the San Gabriel and San Bernardino ranges in the south. Those areas in the northern region are best reached by trains of the Union Pacific-Southern Pacific Overland Route; those on the eastern slope of the Sierra, by trains of the Union Pacific to Las Vegas, Nevada, or Los Angeles, or the Union Pacific-Southern Pacific Overland Route trains to Reno, Nevada; those in the southern part of the State, by trains of the Union Pacific to San Bernardino and Los Angeles. Through trains leave Chicago via the C&NW System.

16 DONNER TRAIL AREA. Location: In Tahoe National Forest of California, within a distance of 25 miles along the Union Pacific-Southern Pacific Overland Route, between Donner Lake on the east and Emigrant Gap on the west; Highway 40, open all year. From an elevation of 5940 feet at Donner Lake, 7135 feet at Donner Pass and 5000 feet at Emigrant Gap, the elevations vary, the high point being Castle Peak, 9100 feet, north of Norden. Visitors may detrain or entrain at Truckee, Norden (Norden Ski Hut), Soda Springs, Cisco or Emigrant Gap.

This great area offers exceptionally good accommodations of varied types at reasonable cost.

The average temperature is 30°, snowfall around 400 inches, and the season four to five months duration beginning about December 15.

Following are brief comments on accommodations and activities at each resort in their order east to west.

AUBURN SKI CLUB. Location: The Auburn Ski Club area lies near the western end of this Donner Trail Region, just east of Southern Pacific's Cisco Station, elevation of 5993 feet.

Accommodations: Ample accommodations in hotels or cabins in near-by communities, Cisco Grove, Rainbow Tavern, Big Ben Inn, Mrs. Jennie Moore's and Cisco Hotel—rates \$1.25 and up.

Activities: Class A, B, C and D jumping hills, slalom and downhill courses. Ski lodges open to public. Rope tow. Short trails from top. Excellent cross-country terrain with conducted tours. Ski instruction.

Further Information: Address Auburn Ski Club, Cisco, California.

HOUSE OF VANDERFORD. Location: Elevation 7135 "atop the Sierra" at Donner Summit—about one and one-half miles from Norden Ski Hut. Transportation between Norden Ski Hut and House of Vanderford provided by station wagon—no charge for guests.

Accommodations: An attractive building of rustic, large, exposed timber construction. Rates per day, European Plan \$3.25 in dormitories; \$3.50 per person in double rooms without bath. Weekly rates: \$19.50 dormitories; \$21.00 per person, double rooms. Rates for guests furnishing own sleeping bag: \$3.00 per person, \$18.00 per

week. Has large lounge and dining room where meals are served family style. Meals without lodging also available. Winter sports equipment available.

Activities: Many good ski trails near resort. Two new rope tows on Signal Hill. Nearby are many good skiing areas with rope tows. House of Vanderford Ski School charges \$2.00 per lesson, 12 lessons \$12.00.

Further Information: Write Mrs. J. A. Vanderford or Bill Strickland, House of Vanderford, Norden, California.

NORDEN SKI HUT. Location: About 16 miles west of Truckee, approximately the center of this 25-mile long Donner Snow Sports Recreation Region. Elevation 7014 feet.

Accommodations: Norden Ski Hut is the Southern Pacific Station at this point. The Hut is a long, semi-rustic room, located inside the snowshed. It provides an ideal waiting room, lounge and restrooms, warming room, lunch counter a la carte at popular prices, checkrooms, equipment rental and other conveniences.

Activities: Southern Pacific has developed a winter sports playground just outside the Hut. An enclosed overhead ramp runs over the snowshed and leads directly from Ski Hut to the nearby slopes. The gentle slopes are ideal for novice and beginners.

Further Information: Address C. E. Peterson, Vice President, System Passenger Traffic, Southern Pacific Co., 65 Market St., San Francisco 5, California.

NORDEN STORE AND SKI LODGE. Location: Elevation 6880. Located within 100 feet of Norden Ski Hut's north overhead ramp.

Accommodations: Overnight accommodations, European Plan \$3.50 per day. Meals served at reasonable prices. Grocery and supply store.

Activities: Ski tows and slopes easily accessible.

Further Information: Address Ernest Danzger, Norden Store, Norden, Calif.

RAINBOW TAVERN. Location: Elevation 5800. Rainbow Tavern, an out-

standing mountain resort, is picturesquely located in a canyon seven miles west of Soda Springs and nine miles west of the Norden Ski Hut. No charge to guests for automobile ride between station and hotel.

Accommodations: Rates per day in attractive rooms, American Plan \$6.50 single, \$13.00 double. European Plan \$4.00 single, \$7.00 double. Rates for guests and non-guests: Breakfast 75c; luncheon \$1.00; dinner \$1.25. Bar.

Activities: On the hill in back of the Tavern is a modern J-bar ski lift 1300 feet long. Rates: 25c per ride, 5 rides 75c and 15c per ride thereafter. Good ski runs from top of lift. Auburn Ski Club and its facilities only half mile away. Skis and toboggans rented \$1.00 per day, \$5.00 per week; no deposit for guests or others furnishing proper identification. Ski school under supervision of Hannes Schroll. Across road from Tavern is open pond for ice skating and open subject to snow and freezing conditions. Rates: 50c per session. Skates rented: 35c per pair. Skating instruction by Raymond Kelly, \$1.50 per lesson.

Further Information: Write Herstelle Jones, Soda Springs, California.

SODA SPRINGS. Location: Soda Springs is located about 2 miles west of the Norden Ski Hut. Southern Pacific has small shelter at Soda Springs for passengers wishing to entrain and detrain at this point. Rising to the south of the railroad tracks is famous Beacon Hill. Porter meets trains. Elevation 6767 feet.

Accommodations. At Soda Springs Hotel recently enlarged and refurbished. Rates per day: Double rooms (with meals) \$5.50 to \$7.00; dormitories (without meals) \$2.00. Rates for guests and non-guests in large dining room: Breakfast 75c; luncheon \$1.00; dinner \$1.25 and \$1.50. Bar.

Activities: Beacon Hill is one of the best equipped ski hills in the West. On the hill there is one J-bar type ski lift (1250 feet long) and three rope tows. Rates: J-bar lift 15c per ride, \$3.00 per day; rope tows, 10c per ride, \$2.00 per day. Excellent ski runs from top of

Beacon Hill. Sitzmark Lodge provides eating, warming and restroom facilities for skiers. California School of Skiing charges \$2.00 per class lesson. Skis rented \$1.00 per day; \$5.00 deposit.

Further Information: Write Oscar Jones, Soda Springs Hotel, Soda Springs, California.

SUGAR BOWL LODGE. Location: Southwest of Donner Summit, and 1¼ miles from Norden, California. Tractor sleighs leave Norden on schedule and the fare is 50 cents. The elevation of the resort is 7000 feet.

Accommodations: A fine new hotel of modern architecture, with 100-foot front porch facing ski hill, in which are private rooms and dormitories. It is very complete in facilities and includes dining room, lounge and bar. The Chalet adjacent can accommodate guests in dormitories and is complete

with bar, soda fountain and short-order counter. There are in the lodge 16 rooms with bath and rates are on the European Plan: \$12.00 double, \$9.00 single; rooms with adjoining bath \$7.50 single, \$10.00 double; men's dormitory \$2.50; women's dormitory \$3.00. Meals in the dining room: Breakfast \$1.50, luncheon \$1.50, dinner \$2.50 to \$4.00, completely equipped ski shop. Telephone, telegraph, laundry and dry cleaning service available. Southern Pacific Railroad and Highway 40 at Norden, Calif. Plane service at Reno, 45 miles distant.

Activities: Sugar Bowl is said to have one of the finest skiing terrains in California. The slopes are 300 feet from the hotel. Runs vary from ½ to 5 miles with open and wooded slopes for beginners and experts. A chair lift from in front of lodge to Mt. Disney, 3200 feet long has 1050 feet vertical rise, and the charge is 35c per ride;



Norden playground outside Southern Pacific Station, Norden, California

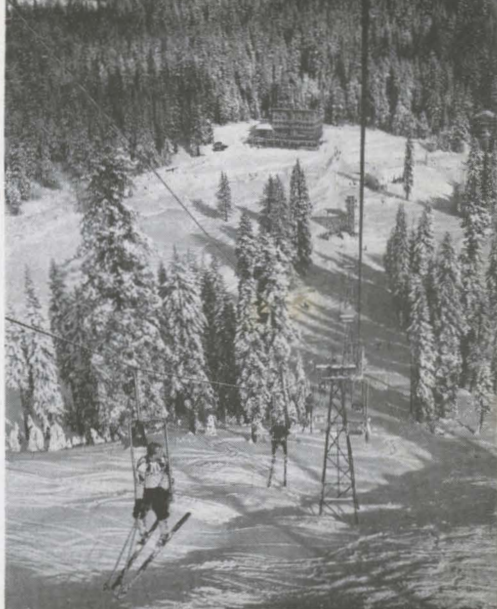
\$3.50 per daily ticket or \$17.50 per weekly ticket. Two rope tows on practice slopes. Ski school under Bill Klein; charge of \$2.50 for single lesson, \$10.00 for five lessons, \$18.50 for ten lessons and \$5.00 for a private lesson. The terrain for ski touring is partly wooded with wonderful open slopes. The average snowfall is 15 feet. Skiing to middle of May.

Further Information: For literature and reservations, address Sugar Bowl Lodge, Norden, California.

26

GIANT FOREST WINTER LODGE. Location: In Sequoia National Park, Sierra Nevada Mountains. It is reached by trains from Los Angeles and San Francisco to Visalia, thence 50 miles by motor. Arrangements should be made in advance with Winter Lodge for transportation between Visalia and the Lodge, the round trip charge is \$8.75 per person, plus Federal tax. Minimum of two fares is required. The elevation of the Lodge is 6600 feet and average temperature during winter season 50°.

Accommodations: Giant Forest Winter Lodge has a central lobby with immense fireplace, attractive dining room; store which carries canned goods and staple groceries, drug sundries, etc., rental department with toboggans, skis, snow-shoes and winter wearing apparel at reasonable rates, and rustic cabins specially constructed for winter occupancy and heated by airtight wood-burning heaters. Beds and bedding are first-class. A new sanitary toilet and bath house, heated throughout, is available for guests in cabins without private bath. Also housekeeping and shelter camp. Rates in rustic cabins are available on European plan. The European plan rate per person, in cabins without bath is \$2.75 up single, \$2.00 up double; in cabin with bath \$5.50 up single, \$3.75 up double. Children 3 to 10 years of age half rate. Coffee shop meal service, breakfast 50c up; luncheon and dinner 85c up. Housekeeping accommodations in rustic cabins, completely equipped vary from \$5.00 for 3 persons; \$4.00 for 2 persons, \$3.00



Ski lift and Inn at Sugar Bowl
in Northern California

for 1 person, per day, to weekly rates of \$22.00, \$18.00 and \$15.00 respectively. Telephone and telegraph service; hospital and doctor 35 miles; winter season September 11 to May 24.

Activities: The ski slopes and runs are three miles from the camp. Guests must make own arrangements for transportation thereto. Both wooded and open slopes but of only gradual descent, not large enough to interest professionals but the terrain is ideal for the novice skier as well as others. The skating rink and toboggan slides offer variety. A popular resort for the winter sports enthusiast. The average snowfall is about 110 inches.

Further Information: Address Sequoia and Kings Canyon National Parks Co., Sequoia National Park, California, for reservations and literature.

27

JUNE LAKE AREA. Location: In Inyo National Forest in the Inyo-Mono Eastern Sierra ski terrain, 340 miles north of Los Angeles; 150 miles south of Reno, Nevada, and a few miles off

U. S. Highway 395. Road open all year. Elevation 7631. Visitors may reach the area from Reno or Los Angeles via Inland Stages. Fare from Reno approximately \$4.00 and from Los Angeles \$8.00. Reno is on Union Pacific-Southern Pacific Overland Route, and Los Angeles is served by Union Pacific.

Accommodations: Seven resorts and lodges, accommodating a total of 500 persons—open year 'round. Majority of cabins are modern with gas cooking and heating facilities. Lodges have attractive lobbies, fireplaces, etc. Rates start at \$1.50 single to \$2.50 for cabins; \$7.00 single and up, American plan. Restaurants are open in area and meals average breakfast \$1.00; luncheon \$1.00; dinner \$1.25. Equipment may be rented or purchased in the area. Telephone and telegraph service. Doctor and hospital at Bridgeport, 45 miles north.

Activities: All types of runs from nursery slopes to famous Carson Peak downmountain race course. Two electrically operated rope tows, one a thousand feet long with vertical rise of 200 feet, and the second the same length with vertical rise of 420 feet. Rates on lifts \$1.50 per day. Tows operate daily 10 a.m. to 4 p.m. Lower slope floodlighted for night skiing. Ski School conducted daily under a C.S.A. Certified Instructor. Private lessons also available at standard rates. Ice skating during December and January. Snow season from approximately Thanksgiving to April 15. Snow depth four to six feet. Good powder snow during December to middle of February.

Further Information: Address June Lake Ski Hut, June Lake, California.

26 LAKE ARROWHEAD. Location: In the San Bernardino National Forest of Southern California. Elevation 5,200 feet. 18 miles northeast of San Bernardino and 83 miles from Los Angeles. San Bernardino is nearest railroad station and is served by Union Pacific. Mountain Auto Lines bus takes passengers directly to resort. Round trip fare from San Bernardino is \$4.50 and

one-way is \$2.71. Winter sports season from December 1 to May 1.

Accommodations: Official headquarters for winter sports activity is the Village Inn in Lake Arrowhead's Village, an attractive modern hotel of Norman English architecture. Every room with bath and steam heat. Large lobby. European plan rates are single \$4.00 and up and double \$5.00 and up. Located in Lake Arrowhead Village, the Chalet, a new grill and cocktail lounge, serves charcoal broiled steaks and chops and other delicious specialties, including your favorite drink as you like it. The new Village Cafeteria, with facilities for seating 500 persons, serves delicious food at moderate cost. Lake Arrowhead's Tyrolean Village offers drug store, gift shop, clothing store, groceries, theatre, bus depot, barber shop, beauty shop, appliance store, service station and garage, dry cleaning and laundry service. Telephone, telegraph, doctor and medical service. Winter sports season December 15 to March 15.

Arrowhead Hot Springs Hotel, located on the northern city limits of San Bernardino, just six miles from Union Pacific Station, at an elevation of 2,000 feet. Guests met at station at no additional charge. Single rooms with private bath from \$14.00 to \$22.00 per day, European Plan. Rooms with private sun decks and bungalows, as well as deluxe suites. Servants quarters. Swimming pool, motion picture theatre, tennis courts, horseback riding and dancing nightly. Natural baths and steam caves within the hotel. Hydrotherapy and physiotherapy treatments with skilled attendants in charge. Diet kitchen under constant medical supervision. Arrowhead Hot Springs Hotel takes guests, by station wagon, to Snow Valley to enjoy all the winter sports offered there.

Activities: Winter skiing generally available in vicinity of Lake Arrowhead Village. Larger ski area at Snow Valley, 14 miles away, on state highway. Elevation 6800 feet. This is a beautiful valley for winter sports. Wire cable tow 1200 feet long with rise of 360 feet. Open side hill toboggan slide.



Badger Pass Ski House, Yosemite National Park, California

Trail 2 miles long from top of tow. Class A jumping hill, ski tows to Kelly Lake, elevation 7800 feet, 6 miles long, and to Slide Peak, elevation 7800 feet, 3½ miles long. Practice, novice and slalom courses. Norwegian ski instructor. Ski huts and snack bars serving sandwiches and hot and cold drinks. Ski equipment for rent both at Lake Arrowhead Village and Snow Valley.

Further Information: About Lake Arrowhead, address Lake Arrowhead Division, Los Angeles Turf Club, Inc., Lake Arrowhead, California, or The Village Inn, Lake Arrowhead, California, or Hall Wilson Travel Bureau, 412 West 6th Street, Los Angeles, California, telephone VAndyke 6603. For Arrowhead Hot Springs Hotel information or reservations address Arrowhead Hot Springs Hotel, San Bernardino, California.

MT. SHASTA AREA. Location: In the Shasta National Forest on the slopes of Mt. Shasta. Skiing at Sand Flat, Panther Meadow, Sierra Alpine Lodge, elevation 5000 to 10,000 feet, areas 10 to 15 miles east of the city of Mount Shasta. The city of Mount Shasta is 300 miles north of San Francisco on U. S. Highway 99, the Southern Pacific Railroad, and Southwest Airways.

Accommodations: Comfortable living accommodations for all visitors to this region in hotels, and cabins in Mount Shasta, Dunsmuir, Weed, and Shasta Springs Resort. Shops and stores, restaurants, doctors, hospital, telegraph and telephone services available in the towns. Equipment available.

Activities: One of the finest skiing and winter sports area in the U. S. is located on the slopes of Mt. Shasta. Ample snow may be depended upon

from the first of December through the end of May and some years all year 'round. There are no tows or other developments as the area is difficult of access when the Everitt Memorial Highway becomes impassable during the winter months. Terrain suitable for all classes of skiers is available.

Further Information: Address Supervisor, Shasta National Forest, Mount Shasta, California, or Mt. Shasta Snowmen, Mount Shasta, California.

▲ MOUNT WILSON HOTEL. Location: Situated on top of Mount Wilson in the Sierra Madre Mountains, Angeles National Forest, 30 miles northeast of Los Angeles, at elevation of 5850 feet. It is conveniently reached from Los Angeles by regular motor stage, at round trip cost of \$1.50 over the new hi-gear Angelus Crest Highway. The average temperature during winter months is 60°.

Accommodations: The hotel with large lounge, fireplace, comfortable dining room and lunch counter and cottages picturesquely grouped about the main building is close to the famous Mt. Wilson observatory. All rooms in the cottages are electrically heated and are rented on the European plan. There are 4 with bath, single \$4.00, double \$5.00; 14 with hot and cold running water and toilet, single \$3.00, double \$4.00; 35 without running water and toilet, single \$2.00, double \$3.00; twin beds 50 cents extra. Slightly lower rates for stay of two days or longer. Meals in dining room and at counter are served a la carte at popular prices, also special table d'hôte dinner for \$1.50. Winter sports equipment may be rented. Games and juke box for evening entertainment. Telephone and telegraph service. Cabins, cafe and coffee shop also for overnight guests.

Activities: Ski slopes are near hotel on mountain side; touring over mountainous wooded terrain. Coasting by sled and toboggan is also available.

Further Information: Address Mount Wilson Hotel, P. O. Mount Wilson, California.

SILVER TIP LODGE AT FISH CAMP.

Location: The winter sports area and Lodge are located in the Sierra National Forest, 65 miles northwest of Fresno, California, not far from the Nevada border. The nearest railroad stations are Madera, 50 miles from the resort; Fresno, 65 miles, and Merced 75 miles, all served by Southern Pacific trains from Los Angeles or San Francisco. The elevation of the Lodge is 5500 feet and the average temperature 40°.

Accommodations: The resort is a group of attractive buildings, central lodge with 30 single and double cabins round about, accommodating 75 to 80 persons. Central lodge has large dining room, cocktail lounge and lobby with fireplace. All are rustic log construction. All cabins have bathrooms, with hot and cold water. Some have heaters and some fireplaces.

Activities: Skiing, tobogganing and skating are the featured winter sports in this area, all quickly accessible directly from the Lodge. Three ski slopes ranging from ¼ to ½ mile in length average 300-foot rise. One ski run begins at the Lodge and runs 8 miles to Wawona. Another run of 800 feet is double marked for novice skiers. Ski instructor is available at the Lodge. There is a ski tow about a mile long. A charge of 10c a ride or \$1.00 a day is made for this rope-tow. Tobogganing is very popular and there is a good clear run. There is a rope-tow for this toboggan run, also. Near-by is a nice lake for ice-skating and skates may be rented at the Lodge.

Further Information: Address Silver Tip Lodge, Fish Camp, Mariposa County, California, or Fresno Ski Club, Fresno, California.

TAHOE CITY AREA. Location: In the Tahoe National Forest, 15 miles south of Truckee, a station on the Union Pacific-Southern Pacific Overland Route, just west of the Nevada-California line. Bus service between Truckee and Tahoe City. Elevation of area 6230 feet. Snow depth runs three to ten feet.

Accommodations: Tahoe Inn, beautifully situated on the northwest shore

of Lake Tahoe, has accommodations for 65 guests at rates ranging between \$5.00 to \$8.00 per day. Meals. Lake Chalet has housekeeping accommodations for 40 guests. Sky Lodge has accommodations for 50 guests, double \$6.00, single \$4.50. Winter sports equipment for rent on area. Season December through March.

Activities: The main ski area is near Tahoe Inn. Olympic Hill is just one mile from Tahoe City. Class A, B, C, and D jumps, small jump, slalom and downhill runs, marked trails. A 1400 foot rope tow with 200 foot rise serves the area. Skating in season. Ski hut.

Further Information: Address Lake Tahoe Ski Club or Tahoe Inn, Tahoe City, Lake Tahoe, California.

TAHOE-NEVADA AREA. Location: Located on the Nevada side of Lake Tahoe, chief resort of which is White Hills, at Spooners Summit on U.S. Highway 50. White Hills is 43 miles south of Reno and 12 miles west of Carson City. Season extends from about December 1 until late in May.

Accommodations: On Highway 50, leading to Lake Tahoe, is Strawberry Lodge, Kyburz P.O., California, offering excellent accommodations. In addition to the usual metropolitan conveniences in Reno, there are hotels, auto courts and restaurants in Carson City, and numerous resort areas along the shores of Lake Tahoe. Warming hut, lunch room, ski-school, rentals.

Activities: Six clear ski runs, ranging in length from 2100 feet to one and one-half miles, dropping 800 and 1000 feet. New Constam T-Bar lift 2200 feet long, rising 900 feet. One rope tow 800 feet long, rising 100 feet. Special events include the famous Snowshoe Thompson Memorial Cross Country Race; Championship Jumping, and other interscholastic events.

Further Information: Address Winter Sports Bureau, Reno Chamber of Commerce, Reno, Nevada.

MT. ROSE AREA. Location: In western Nevada, in the Mono National Forest, 9000 feet up, about 24 miles south of Reno, just west of U. S. Highway 395.

Reno is on the main line of the Union Pacific-Southern Pacific Overland Route trains. Average snowfall is 6½ inches, new snow falling on average of every two and one quarter days. Season extends from about November 1 through late May.

Accommodations: Visitors make Reno their headquarters which offers a wide variety of hotels, exclusive resorts and inexpensive auto courts. Rates from \$1.00 to \$15.00 a day. Dining rooms, restaurants, cafes, night clubs, other recreation of wide variety to suit every taste. Excellent hospitals, doctors, telephone, telegraph and other facilities available. Mt. Rose area also offers excellent accommodations at "Sky Tavern," a new skiers' hotel. There is also a warming hut, dormitory, ski school, ski shop, children's classes, coffee shop, lunch room, etc.

Activities: Skiing on Mt. Rose offers many wide open slopes, sheltered on the northern slopes, but open to Nevada sunshine. Clear slopes from half mile to three miles long, dropping from 600 to 2200 feet. New Big Constam T-Bar lift, 1800 feet long, rising 650 feet. Two power rope tows 600 and 1200 feet long. Special 1200-foot rope tow for children. Special events include intercollegiate Ski Carnival, Silver Dollar Ski Derby, Championship Slalom, Down-Mountain, and Jumping events and other meets. Mt. Rose Galena Creek area is 3 miles below at an elevation of 6300 feet, with rope tow, Class B Jump, warming hut, beginners' slope, downhill trails race course, and cross country trails.

Further Information: Address Winter Sports Bureau, Reno Chamber of Commerce, Reno, Nevada.

TUOLUMNE COUNTY REGION. Location: This region of about 25 miles in the Sierra Nevada Mountains of Northern California, directly east from San Francisco, is a very popular Winter Sports area. It is reached from San Francisco by Southern Pacific trains to Stockton, thence Greyhound bus to Sonora, 145 miles, from which point special arrangements must be made in advance for transportation to individ-

ual resorts. Comfortable accommodations are available and diversified activities enjoyed throughout this region as briefly described in the following. The average winter temperature is about 37° and the season usually extends from December to April, with average snowfall about 7 feet.

LONG BARN AREA. Location: 19 miles northeast of Sonora, 70 miles from Stockton or Modesto, 145 miles from San Francisco. On all-year highway No. 108. Pacific Greyhound buses make daily stops at Long Barn or station wagon will call for guests at Sonora. Elevation 5328 feet.

Accommodations: Long Barn Lodge accommodates 100 in cottages, ski huts and hotel. Rates from \$3.50 up European plan. Other accommodations at K&D Tavern and Sylvan Lodge, 2 miles south of Long Barn. Ski shop and general store carry full line skis, toboggans, ski boots, skates and shoes for rental and sale.

Activities: 2005-foot long, two-lane toboggan with pullback; skating; shelter; two-rope ski tows—500 feet long and 420 feet long.

Further Information: Address Long Barn Lodge, Long Barn, Tuolumne County, Calif., K&D Tavern, Long Barn, Cal., or Sylvan Lodge, Mono Highway via Sonora, Calif.

PINECREST. Accommodations: Pinecrest is about 30 miles northeast of Sonora. Pinecrest Lodge provides accommodations for 106 in hotel and cabins at European Plan rates of \$4.00 and up, per day. Karl's Place has cabins with capacity of 72, rates \$6.00 and up per day, and in dormitories 20 guests, \$1.50 per day. Meals, store and equipment available.

Further Information: Address Pinecrest Lodge or Karl's Place, P. O. Pinecrest, Tuolumne County, California.

TWAIN HARTE LODGE. Accommodations: Eleven miles east of Sonora, the Lodge with its adjoining cabins of rustic design, some of which are equipped for housekeeping, offers

splendid accommodations for about 70 guests. Private showers, hot and cold water, heat and every modern convenience. Cabins for four persons. Rates: \$4.00 per day and \$25.00 per week, single; double \$5.50 per day, \$35.00 per week. Meals in dining room and coffee shop at moderate prices. Fountain and cocktail lounge. Dancing. Skiing equipment may be purchased or rented. Telephone and telegraph service; doctor and hospital are available.

Further Information: For literature and further information address Twain Harte Lodge, P. O. Sonora, Tuolumne County, California.

YOSEMITE NATIONAL PARK. Location: This great winter playground is 200 miles south of San Francisco, 313 miles north of Los Angeles, in the heart of the Sierra Nevada Mountains, central to all California. Merced, 83 miles from the Park, and Fresno, 94 miles, are the winter gateways. Visitors to Yosemite may use motor coaches of the Yosemite Transportation System from Merced to the Yosemite Valley, touring the Valley and to and from the winter sports area. The transportation costs are reasonable and can be quoted by railroad agents and travel bureaus in all principal cities. The elevation of Yosemite Valley is 4000 feet and of Badger Pass, where ski slopes begin, 7300 feet. The average temperature during December is 40°, January 40°, February 36° and March 35°.

Accommodations: Yosemite offers splendid accommodations for the winter sports visitor. The Ahwahnee offers excellent accommodations on the American Plan. All rooms (115) have private bath and the rates are \$16.00 per person, per day, single; \$14.00 per person, per day, double. Yosemite Lodge, a colony of cabins at foot of Yosemite Falls, has 100 rooms with bath (18 equipped for housekeeping) and 128 rooms without bath and the rates (European Plan), are, with bath double \$7.00, single \$4.50; without bath, double \$3.50, single \$2.75. Children under 3 years, no charge; 3 to 10



Beautiful Lake Arrowhead near San Bernardino, California

years half rate; 11 years and over, full rate. Special rates for servants at The Ahwahnee \$8.00 a day; regular rates at Yosemite Lodge.

The Ahwahnee has beautiful dining room, large lounge, card rooms, cocktail lounge, shops and complete facilities. Yosemite Lodge central buildings include lounge, cafeteria, grill, soda fountain, writing room and complete facilities.

Winter sports equipment may be purchased or rented.

Badger Pass Ski House, above the Valley, is the most modern ski-rendezvous in California. In addition to providing a cafeteria, lounge, with huge fireplace, lockers, ski-rental and waxing room, it serves as headquarters for the Yosemite Ski School. There are no sleeping quarters here.

The Ostrander Lake Ski Hut at 8600 feet elevation is reached by touring trails, the shorter of which is about 9 miles from Badger Pass and $4\frac{1}{2}$ miles from the Glacier Point road. The Hut has accommodations for 23 persons and is close to some of the finest skiing terrain in the Park.

Activities: Yosemite ranks with the world's most famous winter resorts in snow conditions and complete program of sports. The modern ski house at Badger Pass is surrounded by miles of scenic slopes, and ski runs, from 1 mile to 6 miles with drops of 500 feet to 2500 feet. A new Constam T-bar ski lift transports skiers 3200 feet—650 vertical feet to Ski Top. Charge varies from 25 cents a ride to \$5 for 30-ride ticket. Three rope tows, 1000 feet long, are in operation in the Badger Pass

area; one at Tempo Dome, elevation of which is 8000 feet and two near the Badger Pass Ski House. There is a 30-meter Class C jump hill primarily for practice, although used for some championship events. Ski School rates, half day (one session) \$2.00; one day (both sessions) \$3.00; four sessions \$5.00; ten sessions \$10.00; children 3 to 11 years half rate. Badger Pass ski slopes are 22 miles from the Valley, a three-quarter-hour drive. Yosemite Transportation System buses provide service at round-trip charge of \$1.73, including tax. Roads are kept open by rotary plows. The general terrain for touring is both open and wooded, very scenic, and almost unlimited. In the Valley is a large outdoor skating rink; a four-track, mile-a-minute toboggan slide. Several ski meets are held during the winter season, mid-December to mid-April.

Evening entertainment includes motion pictures, lectures, concerts, entertainers, rink carnivals and exhibitions, hockey games and dancing. Telephone, telegraph, doctor, dentist and hospital facilities are available.

Charges for sports in the Valley are: Tobogganing 10 cents per trip; ice skating, no charge. Average snowfall is 250 inches, depth in Valley varies 1 to 5 feet, at Badger Pass 8 to 13 feet.

Further Information: For reservations, All-Expense Ski Vacation information and literature address Yosemite Park and Curry Co., Yosemite National Park, California, or 39 Geary Street, San Francisco, or 514 South Grand Avenue, Los Angeles.



WRIGHTWOOD. Location: On the north side of San Gabriel Mountains in Southern California, Angeles National Forest, overlooking the Mojave Desert; 15 miles west of Cajon Pass; 35 miles from San Bernardino, and 87 miles from Los Angeles. Wrightwood Cottage cars will pick up guests arriving at Cajon by rail without charge when arrangements are made in advance. Fine high-gear motor road from Los Angeles, San Bernardino, and all western and northern points. Elevation is 6200 feet and average temperature in

December 16°, January 10°, February zero, and March 15°.

Accommodations: A splendid community of about 450 nice cottages. Excellent mountain store selling almost everything. Central lodge with 20 rooms and attractive lobby with huge central open fireplace. Good cafe accommodating 60 persons; club breakfasts 60c up; dinners \$1.00, \$1.50 and \$2.00. Wide variety of well-furnished housekeeping cottages, all having electricity, hot water and bath. Prices depend upon size of cottage, and number of persons in party. Sports equipment may be rented or purchased. Telephone and telegraph service; doctor, ambulance service to San Bernardino. Winter season usually begins about December 15 and runs to March 20 or later.

Activities: Ski slopes begin at the resort. New \$35,000 chair lift completed in winter of 1946-47; length of lift 2000 feet, vertical rise 700 feet, capacity 450 persons per hour, 67 chairs. The top of the lift is 7909 feet elevation, bottom 7200 feet. Shuttle service by bus from the highway to bottom of lift. Other developments connected with the lift include a warming shelter and cafe at the top of the lift, and a ski shop at the foot of the lift. There are also 5 rope tows in operation; 7 miles of cleared trails, including 5 major trails serviced by the lift; all located on north slopes. Ski school is operated throughout the winter season. Snowfall varies from 3 to 8 feet. Other winter sports include tobogganing; coasting on sleds; snowshoeing; ice skating on lake; safe slopes for children and beginners. In addition to the activities mentioned above, all of which are located in the Blue Ridge area, there are good ski slopes and rope lifts operating at Table Mountain area, 2½ miles from Wrightwood. Dancing Wednesday and Saturday evenings; wiener roasts, movies, bridge parties, etc., provide interesting entertainment.

Further Information: Address Mr. & Mrs. G. S. Corpe, Wrightwood Cottages, P. O. Box 132, Wrightwood, California.

Colorado

Denver is the gateway to all of Colorado's Winter Sports areas. Union Pacific trains from all directions provide excellent transportation facilities to and from Denver. The daily Streamliner "City of Denver"—from Chicago and Omaha—makes it possible to spend a week-end enjoying winter sports in the Rockies. Its overnight schedule between Chicago and Denver allows more time for winter sports in Colorado. From St. Louis-Kansas City the Streamliner "City of St. Louis" brings winter sports closer to the South and Southeast. There is no extra fare on either train.



▲1 ARAPAHOE BASIN. Location: On west side of Loveland Pass, 68 miles west of Denver on Highway No. 6. Six miles from Dillon, Colorado. Altitude, top 12,500 feet. Season November 1 to June 1.

Accommodations: Daily bus service from Denver and Salt Lake City. Station wagon shuttle service from Wildwood Lodge, Dillon (10 miles). Accommodate 80 guests. Modern cabins at Dillon and Georgetown (20 miles) and Van's De Stonehenge Lodge (23 miles).

Activities: Terrain consists of two square miles, variety open slopes, plus trails for novice and expert skiers. Standard race course two miles long. Small jumps, cross country and touring trails, slalom slopes. New electric chair lifts from highway to summit Norway Mountain. First section 3000 feet long, vertical rise 900 feet. Second section 4000 feet long, vertical rise 1000 feet. Two rope tows on practice slopes 700 feet and 1800 feet long. Two small shelter houses at terminal of lifts. Modern shelter house at base of lifts on highway. Lounge, restaurant, ski rental shop, and nursery, ski patrol, ski instruction school, auto parking area.

Address Arapahoe Basin, Inc., 419 Colorado Building, Denver, Colo.

▲2 ASPEN SKI AREA. Location: In Holy Cross National Forest headquartered in Aspen, Colorado, on D&RGW RR, 226 miles west of Denver, or highway open the year 'round. Elevation 7900 feet. Average winter temperature 22° to 45°.

Accommodations: Hotel Jerome, brick, 62 rooms, rates American plan, single, \$8.00 to \$18.50; double, \$14.00 to \$30.00; cocktail bar, dining room and grill; tea dancing, evening entertainment; \$9.00 to \$25.00; double, \$14.00 to \$24.00; hotel apartments, European plan, single, \$8.00 to \$10.00; double, \$10.00 to \$15.00; Ski Barn, European plan, rooms accommodating four to six persons, single \$2.00. Telephone and telegraph; hospital and doctors; ski equipment, winter season 7 months.

Activities: Chair lift 14,000 feet long, gains altitude of 11,300 feet. Sun house serving hot meals. Lift accommodates 275 persons per hour; rates: Single ride \$2.00; one day \$3.75; three days \$10.00; week \$20.00; month \$70.00; season \$140.00. Ski school. Runs for all classes of skiers—novice and in-



Magnifico Cutoff and Roch Run, Aspen, Colorado

intermediate trails. Terrain for ski-touring excellent. Average snowfall is 16 feet. The National Ski Championships were held in Aspen in 1941. Annual Roch Trophy Race held in March each year. Cousin Jack Race for pleasure skiers held late in April at Sundeck. Giant slalom held at Independence Pass, near Aspen, first Sunday in June.

Further Information: Address Aspen Company Publicity Office, Aspen, Colorado.

49 BERTHOUD PASS SKI AREA. Location: In Arapahoe National Forest. Altitude 11,315 feet on Continental Divide, 57 miles west of Denver reached via U.S. Highway No. 40. Daily bus service from Denver. Average temperature 25 degrees. Open daily from November to May 31.

Accommodations: Good hotel and lodge accommodations in area. Bus

or station wagon service from Idaho Springs (24 miles), Van's De Stonehenge Lodge (15 miles), Berthoud Falls Inn (6 miles), Sportsland Valley Lodge (12 miles). Shelter house heated—sandwiches and beverages. Ski equipment, rental and repair.

Activities: New electric two-passenger chair lift on western slope 2300 feet long. Beginners' slopes on eastern slope, rope tow 1400 feet long. Hell's Half Acre Ski Run, rope tow 1000 feet long. Hoop Creek Ski Trail on southern slopes one-half mile long; auto shuttle service. Long and Big Roll Run Ski Trails on northern slopes, seven miles long. Highway shuttle service.

Address Sam Huntington, 1413 Colorado St., Idaho Springs, Colorado.

BERTHOUD FALLS INN. Location: Fifty-one miles west of Denver on Berthoud Pass, Highway 40.

Accommodations: New log lodge, dining room, bar. Modern log cabins accommodate 24 persons. Rates \$2.00 to \$2.50 European Plan. Station wagon shuttle service to Berthoud Pass, Loveland Pass, and Winter Park ski courses.

Further Information: Address Frank Curtis, Empire, Colorado.

HANSON'S LODGE. Location: Idaho Springs, Colorado, 32 miles west of Denver on U.S. Highway 40. Bus service from Denver.

Accommodations: Lobby, dining room, cocktail lounge. Accommodations for 50 guests, some with private bath. Single without bath \$2.50; double \$4.00; single with private bath \$3.50; double \$6.00.

Address Yngve Hanson, Hanson's Lodge, Idaho Springs, Colo.

RADIUM HOT SPRINGS HOTEL. Location: Idaho Springs, Colorado, 32 miles west of Denver on U.S. Highway 40. Bus service from Denver.

Accommodations: Rooms for 150 guests. All rooms hot and cold water, some have private bath. Natural vapor cave baths with radio-active water.

Address Harry Hill, Radium Hot Springs Hotel, Idaho Springs, Colo.

SPORTSLAND VALLEY LODGE. Location: Sixty-eight miles west of Denver. Modern lodge, one-half mile from D&SL RR station and on U.S. Highway 40. Guests will be met by station wagon or lodge bus at Denver or Winter Park Station. Shuttle service provided to both Winter Park ski course or Berthoud Pass (12 miles) ski course. Average temperature December to March 30°, April 35°.

Accommodations: Forty people. Rates European plan \$3.00 to \$3.50 single; \$4.00 to \$5.00 double.

Address Henry or Carl Cook, Winter Park, Colorado.

VAN'S DE STONEHENGE LODGE. Location: Forty miles west of Denver at junction of U.S. Highways 40 and 6 serving Arapahoe Basin, Loveland Pass, Berthoud Pass and Winter Park ski areas.

Accommodations: Lodge, large din-

ing room, cocktail lounge; 42 guests. Twin bedrooms with private bath and shower baths. Rates \$10.00 American Plan with shower bath. Deluxe rooms, private bath \$15.00 American Plan.

Lake for ice skating. Station wagon shuttle service to ski area. Guests will be met at Denver, \$5.00 round trip fare.

Address R. A. Van Deussen, Stonehenge Lodge, Empire, Colo.

DROWSY WATER RANCH. Location: 75 miles west of Denver, on D&SL RR from Denver to Drowsy Water Station, also by car or bus on U. S. Highway 40. 1600 ft. electric tow one mile.

Accommodations: Log ranch house, Horse Thief Den, accommodating 20 guests and individual log cabins. All winterized with and without private bath. Rates \$4.00 per day and up, American plan. Telephone, telegraph. Ranch open all year.

Activities: Skiing at ranch, bobsleding, ski-joring, ice skating, and dancing. Snow King Valley has beginners', intermediate and expert trails with average snowfall of three to four feet. Elevation 8000 feet, average temperature of 40 to 50 degrees.

Address Drowsy Water Ranch, Hot Sulphur Springs, Colorado.

ESTES PARK AREA. Location: 68 miles northwest of Denver and 90 miles southwest of Cheyenne, Wyoming. Greeley, Colorado, 50 miles east. All served by Union Pacific. Transportation from these railroad gateways to Estes Park Village can be arranged through Rocky Mountain Parks Transportation Company, Denver. Highway connections via Loveland, U. S. 34; U. S. 87 to Longmont from Denver; State Highway 66 from Longmont via Lyons, U. S. Highway 34. Estes Park, gateway village, 7500 feet altitude. Average temperature 25° to 32°.

Accommodations: National Park Hotel in Estes Park accommodations, with and without bath, at moderate rates. Ski equipment for sale, but not for rent. Telephone, telegraph, doctor, hospital, general stores. Winter season lower elevations, December to March—into June on higher elevations.

Activities: Ski slopes in Hidden Valley, eleven miles west of Estes Park Village. Choice of runs, practice, novice, intermediate and advanced slopes. Small jump and toboggan slide for amateurs. 1500-foot drop in elevation from the upper end to the lower end. Trail Ridge highway connects lower and upper areas, skiers ride to top of ski courses and ski down. Shelter cabins, lunches. Rangers patrol. Snow Sports club in Estes Park Village. Ski jump one mile west. Bowling, theatre and other recreation in village all winter.

Address W. C. Davie, Chamber of Commerce, Estes Park, Colorado.



GLENWOOD SPRINGS WINTER SPORTS AREA.

Location: On U.S. Highway 6 and 24, 165 miles west of Denver, on D&RGW RR. Elevation, 5800 feet, average temperature December to March 35°.

Accommodations: American and European Plan accommodations avail-

able. 200 rooms with bath and 325 without bath. Colorado Hotel rates: Single, without bath \$2.50; with bath \$3.00 to \$7.00. Double, without bath \$4.00; with bath \$5.00 to \$10.00. Meals breakfast 75c; luncheon 85c; dinner \$1.50 all up. Denver Hotel rates: Single, without bath \$2.00; with bath \$2.50; double, without bath 3.00, with bath \$5.00. Meal prices breakfast 55c up; luncheon 75c up, dinner \$1.00 up. Telephone and telegraph. Doctors and hospitals.

Activities: The ski slopes are within easy walking distance. Bus service if desired. Ski course is one mile in length, with vertical rise of 1454 feet. Chair type tow lifts with vertical rise of 1454 feet, 4459 feet in length. Charge \$1.50 per day or 25c for single ride. Ski instruction at \$1.00 per lesson in class groups. Average snowfall 4 to 6 feet. Slalom course, two practice courses for novice skiers. Ski course is lighted for night skiing. Ice skating, dancing, bowling, movies and swim-

Skiers survey the terrain in the high Rockies near Denver.



ming in outdoor hot-water pool.

Address Winter Sports Club, Glenwood Springs, Colo.

46 HOT SULPHUR SPRINGS SKI AREA.

Location: 86 miles west of Denver, reached from Denver via D&SL RR; elevation 7665 feet.

Accommodations: Riverside Hotel has shower and tub baths but no rooms with bath; European Plan \$2.00 single and \$2.50 double and up; modern cabins \$3.00 up. Meals served by five cafes and sandwich shops, capable of handling Sunday ski parties 500 to 1000. The Silver Spruce Hotel offers accommodations at moderate rates.

Activities: Two rope ski tows, one 1600 feet for which the rate is \$1.00 per day, and one 1000 feet for which the rate is 50c per day. Two beginners' trails; two jumping hills and two intermediate trails three-quarters of a mile each. Terrain for cross-country touring; open and gently rolling hills. Ice skating rink 100 by 300 feet. Hot sulphur baths; excellent indoor swimming pool. Telephone and telegraph service. Winter season 5½ months.

Address R. B. Greenhalgh, Ski Club, Hot Sulphur Springs, Colorado.

50 LOVELAND PASS SKI AREA.

Location: 59 miles west from Denver on Highway 40-6. It is located on the east side of Loveland Pass, 4 miles below the summit and extends back to the Continental Divide. Elevations from 10,500 to 11,200 feet. Cars can be rented in Denver or at Georgetown. Season November 15 to May 30.

Accommodations: Accommodations at the following: Van's De Stonehenge Lodge (16 miles); Glen Arbor Lodge, (20 miles) Idaho Springs (24 miles) at Radium Hot Springs Hotel, Hanson's Lodge, or Berthoud Falls Inn (28 miles) described previously. Shelter and parking space, altitude 10,500 feet, lunches and refreshments.

Activities: Skiing close to shelter. Slopes well protected, snow is deep and well textured. Skiing December to late April. Run, 4000 feet long, drop of 1100 feet; another run 2½ miles with a 2500-foot vertical drop. Rope tows 1800 and 1600 feet long Sundays only.



The foothills near Colorado Springs offer excellent skiing

Rope tows 600 feet long, open every day. Charge of \$1.00 per day permits use of all of the rope tows.

Address Allen W. Bennett, 154 So. Pennsylvania, Denver.

PIKES PEAK SKI CLUB. Location: The winter sports area is located 20 miles west of Colorado Springs, which is 75 miles south of Denver. Has frequent train service from and to Denver. Elevation winter sports region, near Glen Cove, 10,500 to 13,000 feet.

Accommodations: Numerous hotels in this region, rooms with and without bath. Glen Cove Inn, located on slopes of Pikes Peak, offers meals and lodging at moderate rates. Facilities for 30 persons; ski room. Transportation to Glen Cove. Stores and shops in Colorado Springs and Manitou. Evening entertainment. Telephone and telegraph; doctor and hospital service. Season from January to May.

Activities: Ski slopes are approximately 20 miles from Colorado Springs.



Skiers relax at a western ski lodge.

Numerous practice slopes and ski trails. Excellent for novice skiers. Electrically-powered rope tow. Slalom Trail, 925 feet long, with a 250-foot vertical rise, for the more advanced skier. Electrically-operated rope tow. Practice slope, 500 feet long, with 165-foot vertical rise. Electrically-powered rope tow. Rates for tows are \$1.00 per day for the use of all tows. Excellent spring skiing. The annual Pikes Peak Ski Club Championships are held the third week in April. Open and Amateur Classes, A, B, C and Women's. Professional instruction Birger Torrisen School. Ice skating at the Broadmoor Ice Palace. Indoor rink 82 by 185 feet. Ice extravaganzas and collegiate hockey contests. Seating capacity of 2500 persons. Skating instruction.

Other activities include golf, tennis,

swimming, horseback riding, bowling, squash, handball, badminton, pool and billiards, and ping-pong.

Address Pikes Peak Ski Club, 206 N. Tejon Street, Colorado Springs, Colorado, or Colorado Springs Chamber of Commerce, 112 East Pikes Peak Avenue, Colorado Springs, Colorado.

THE ROCK CREEK SKI AREA. ▲ Location: Two miles south of Allenspark, Colorado. Reached via State Highway No. 66, parking area. Elevation 9000 to 12,183 feet. Season November 1 to May 1.

Accommodations: Comfortable overnight accommodations.

Activities: Downhill runs, an excellent jump and ski touring, one half-mile run 600-foot drop, one quarter-mile run 200-foot drop. Beginners'

slope 100-foot drop. Two rope tows, one 2000 feet 600-foot vertical rise, one 400 feet long 100-foot rise. 30-meter jumping hill. Ski instruction. Ski Patrol.

Write St. Vrain Ski Club, Inc., Allenspark, Colorado.

41 **SALIDA-MONARCH PASS AREA.** Location: Twenty miles from Salida, on U. S. Highway 50. Elevation 10,500, on D&RGW RR.

Accommodations: Accommodations in Salida and on Monarch Pass. Tourist courts. Season November through April.

Activities: Ice skating rink, ski equipment, rental or purchase. Bus service. Snow depth 14 to 16 feet. Touring for advanced skiers. Monarch Run, 3 miles in length; 1500-foot drop. Trails starting at top of tows. One 500 feet long, a second 500 feet long, a third, one half mile. A rope tow 530 feet long, and 950 feet long. Service lodge, hot lunches and drinks, parking space.

Address City of Salida, or Salida Winter Sports Club, Salida, Colorado.

42 **STEAMBOAT SPRINGS WINTER SPORTS CLUB.** Location: West of Denver, 172 miles on Highway 40, or Denver and Rio Grande Railroad, with hills in all directions which provide excellent skiing. Elevation 6,500 feet, mean winter temperature is 9° above. Busses and trains operate from Denver.

Accommodations: Modern hotel, 80 rooms, European Plan, single room \$1.00 up, double \$1.50 up; with bath, single \$2.00, double \$2.50 up. Meals 35 cents breakfast, 45 cents lunch, 75 cents and up for dinner. Many cabins and cottage courts and restaurants. Ski equipment and rental. Telephone, telegraph, doctor, hospital.

Activities: Ideal set-up for winter sports. Ski slopes within a thousand feet of all hotels and restaurants. Club house, refreshments.

Complete two day winter sports carnival with street events in morning and slalom and down mountain races in afternoons, and night festival each February.

Three fine ski runs on Howelsen Hill in city limits, all electric lighted, gentle slopes on one side and steep on the other; all slopes ending at bottom of a 1000-foot long ski tow of boat type operated by electric hoist. A new Constam type chair and T-bar tow will be in operation, extending from the main Club House to the top of Quarry Mountain, over 8000 feet. Many new trails and down mountain courses from the top of Quarry Mountain directly to the city. One rope tow on practice slopes.

Jumping tournaments held on Howelsen Hill. Four jumps are in use, one jump used for Class A jumping and on which the National Ski Jumping Tournament was held. Class A jump provides for jumps of 300 feet and over.

Sledding, skating, modern dancing, square dancing, swimming and shows are other diversions. Certified ski instructor and tour guide.

Address Steamboat Springs Winter Sports Club, Steamboat Springs, Colo.

43 **WINTER PARK SKI AREA.** Location: 69 miles west of Denver, one-fourth mile from Winter Park Station on D&SL RR and Highway No. 40. Shuttle station wagon service from Sportsland Valley Lodge (½ mile), Van de Stonehenge Lodge (27 miles), Berthoud Falls Inn (18 miles), Idaho Springs (36 miles). Elevation 9850 feet. Average temperature November to April 25°. Season November 1 to May 1.

Accommodations: Shelter house, dining room and ski inn, first aid room, bunk house, 300 beds at 75c per night, plus rental sleeping bags if desired; hot water, showers, toilets, recreation room. Ski shop rental and repairs.

Activities: New 2-passenger T-Bar electric lift 2800 feet long, vertical rise 600 feet. New 2-passenger electric lift 4000 feet long, vertical rise 1100 feet. One single passenger T-Bar lift 400 feet long and several rope tows for beginners. New sun deck at top of ski area, 35-meter jump; large parking space, certified ski school.

Further Information: Address Mr. T. K. Cobb or Frank Bulkley, Winter Park, Colo.

Idaho



Idaho's winter sports areas are quickly and easily reached by Union Pacific trains through Pocatello, Minidoka, Shoshone, Boise and Nampa, all main line points. The daily Streamliner "City of Portland" (no extra fare) on a fast schedule, and other fine Union Pacific trains, bring Idaho winter sports resorts, including famous Sun Valley, much closer to eastern and Pacific Northwest devotees.

ALPETTE SKI CLUB AREA. Location: The ski slopes of the Alpette Ski Club are in the lower regions of Scout

Mountain, Cache National Forest, 8 miles southeast of Pocatello, Idaho, on Union Pacific main line between the

Forest Service warming hut at the Payette Lakes Ski Area



East and the Pacific Northwest. The elevation is 8000 feet.

Accommodations: Visitors to the ski area make their headquarters in Pocatello where good hotel accommodations and meals are available at reasonable rates. Stores provide and rent equipment. Evening entertainment in Pocatello. Doctor and hospital; telephone and telegraph service. The winter season begins early in December and runs through March.

Activities: Skiing area approximately 8 miles from Pocatello reached by automobile. The slopes are free from timber, rocks and underbrush. They have a rise of from 10% to 35% in a few hundred yards and range from short practice slopes to five-mile cross-country downhill runs. The general terrain for touring is rolling, generally smooth and open. A ski lodge offering facilities for relaxation and lunches, as well as a 700-foot rope tow may be found on the area.

Excellent slalom courses for the experienced skier, with general drop of 35% in quarter mile "schuss". Downhill course developed, three-quarter mile in length; general drop approximately 25 per cent. Varying degree of slope on terrain for other than expert skiers. The snowfall averages 18 to 36 inches.

Further Information: Address Alpette Ski Club, Inc., Pocatello, Idaho.

42 **BEAR GULCH SKI AREA.** Location: It is 13 miles from Ashton, Idaho on the Union Pacific. Elevation begins at 5300 feet and the climate is characterized by low temperatures at night, but days are sunny and not too cool. The low average temperatures from December through April make ideal snow conditions.

Accommodations: Visitors to the area use hotels at Ashton where reasonable prices prevail. The Forest Service will do considerable clearing to enlarge the parking and skiing areas.

Activities: Slopes rise 630 feet in vertical elevation. The Cub course, a practice hill, has a rope tow 700 feet



Magic Mountain Ski Lodge, Twin Falls, Idaho

long. Rides cost 5c. The Bear Cat, an intermediate course, is almost a mile in length. The Big Dipper is a steep course for the expert only. Both the Bear Cat and the Big Dipper are served by a barge type lift, 1600 feet long. Rides cost 10c. Plans are being made for a new lift.

Further Information: Write J. L. Whittemore, president, Bear Gulch Ski Area, Box 122, Ashton, Idaho.

29 **BOGUS BASIN AREA.** Location: This huge bowl is located within the Boise National Forest, 18 miles north and east of Boise, Idaho, capital city of the State and on Union Pacific's main line to the Pacific Northwest. It nestles just at the foot of Shaffer Butte (elevation 7591) which rises above it approximately 1500 feet. Winter temperatures range from 21° to 70°.

Accommodations: There are separate dormitories for men and for women at the Basin. Will accommodate 30 men and women. Dormitories contain individual beds and bunk-type berths, but no mixed nor private accommodations. There are no private baths, however, central shower room offers bath and toilet facilities. Hot meals are served in the main warming hut. Rates, American plan, \$5.00 per day. Winter sports visitors may also

make their headquarters in Boise or near-by communities where they will find excellent hotel and restaurant facilities.

Activities: A new T-bar type ski lift has been completed to the summit of Deer Point. It is 3000 feet in length with a vertical rise of 950 feet and makes available ski runs over gentle and steep slopes, offering terrain suited to the beginner or the expert. Nursery slopes in the bottom of the basin and from Deer Point provide safe sport for the novice, while the fast and tricky slalom, downhill and cross-country runs will tax the ability of the more capable skiers. There is also the Bogus Basin Ski Club's rope tow with a vertical lift of 800 feet. This tow services the famous Bogus Basin Sno-Bowl. There is a warming hut on the summit of Deer Point where hot food is served. From this vantage point a glorious view of Boise Valley is obtained.

A ski school, certified by the Pacific Northwestern Ski Association is under the direction of Robert Jensen and Lea Bacos.

Further Information: Write Bogus Basin Ski Club, Boise, Idaho, or Boise National Forest, Boise, Idaho.

MAGIC MOUNTAIN SKI AREA. Location: 35 miles southeast of Twin Falls and 19 miles south of Hansen on the Rock Creek road and in the heart of the scenic Minidoka National Forest. Offering some of the finest natural ski terrain in Idaho, the area was selected for skiing purposes by famed Alf Engen and Forest Service officials about eight years ago.

Accommodations: Many improvements have been added to the area since pre-war days, including a 2000 feet overhead cable lift, and a 750 feet rope tow which, combined with the smaller tow previously in operation, delivers more than 750 skiers per hour. There are no overnight accommodations as yet, but plans are being made to build chalets close by the ski area. Overnight accommodations may be had in Twin Falls, served by the Union Pacific Railroad.

Activities: Rates for rides on the ski equipment are \$2.00 per day, per person, for the large lift; \$1.50 for the large rope tow and \$1.00 for the small tow. More than 12 runs are offered on Magic and Pike Mountains which furnish a variety for the novice and expert alike. Snow depths range from four to six feet and a fine quality of powder and corn snow can be found throughout the winter from the month of November to April. The elevation at the top of Magic Mountain is 7040 feet, with the vertical rise of that mountain being 660 feet.

Further Information: Address The Magic Mountain Ski Club, P. O. Box 758, Twin Falls, Idaho.

PAYETTE LAKES AREA. Location: This delightful area is located in the Idaho National Forest, 108 miles north of Boise, Idaho, and 3 miles beyond McCall—a station on the Union Pacific Railroad, headquarters for this skiing region. The elevation is from 5500 to 7500 feet and average temperature in December 21°, January 18°, February 21°, and March 29°.

Accommodations: Visitors to this area use hotels and modern tourist cabins at McCall where every modern facility is available. A U. S. Forest Service shelter is located in the ski area offering short order lunch service. Other meals at McCall. First aid is provided at shelter. Telephone and telegraph service. The winter season extends over five months.

Activities: Slopes have vertical rise of 400 feet. There are three slalom courses, gentle slopes for beginners and steep slopes for experts and one standard 55-meter jump hill. Sled and cable type lifts accommodate ten people per minute, lifting them 400 feet vertically and 1500 horizontally; the adult charge being 15 rides for \$1.00, and children half-rate. Free ski instruction is provided. The general terrain is open and wooded.

Further Information: Address Payette Lakes Ski Club, McCall, Idaho.

SUN VALLEY WINTER SPORTS AREA. Location: Sun Valley lies in the heart



Sun Valley, IDAHO





Sun Valley, IDAHO





Sun Valley, IDAHO



of the Sawtooth Mountain Range of south-central Idaho, at an elevation of 6000 feet. High peaks of the Sawtooth National Forest surround and protect it from cold winter winds. The warm health-giving rays of the sun enhance the pleasure of all outdoor sports. The climate is dry and daytime temperature varies from 20° to 40°.

Sun Valley is served by Union Pacific, and during the winter season, convenient sleeping car service is offered to Ketchum, Idaho, from which point it is but a mile to Sun Valley. Modern streamlined motor buses meet the trains at Ketchum as well as Shoshone, Idaho, on Union Pacific main line between the East and the Pacific Northwest.

Accommodations: In this unique mountain village there are accommodations to suit every taste, and a wide price range prevails. Sun Valley Lodge, one of the finest resort hotels in the country, combines rich beauty with every modern convenience. Nothing has been overlooked which will contribute to the comfort and enjoyment of guests. There are spacious lounges with deep-cushioned easy chairs, and quiet corners for bridge; an intimate cocktail lounge; the famous Duchin Room for dining and dancing where Earl Smith and his Sun Valley Orchestra hold sway; a well-appointed dining room where the finest of fresh foods are served and where dining well is the custom; game room with bowling alleys and pool tables; beauty salon; physiotherapy rooms—one for women, one for men—with expert masseurs in attendance; barber shop; sports apparel shop; glass sheltered warm-water swimming pool. There are guest room accommodations for 250. These rooms are tastefully decorated and furnished. Single, double, as well as deluxe suites, with sun deck, are available. Rates are based on European plan: Room with bath, single \$12.00 per day up, double \$16.00 per day up; deluxe suite, single \$32.00 per day, double \$36.00 per day; room without bath, single \$8.00 per day, double \$12.00 per day. Children under 12 years of age,

half rates; personal servants assigned to special quarters \$6.00 per day.

A short distance from the Lodge is Challenger Inn, the center of a group of quaint buildings that form the village, with shops, motion picture theatre, known as the "Opera House", restaurants, warm-water, glass-sheltered swimming pool, and The Ram—a night club. European plan rates prevail at the Inn; room with running water, sharing bath, single \$8.00 per day, double \$12.00 per day; room sharing shower, single \$6.00 per day, double \$10.00 per day; with private bath, single \$10.00 per day, double \$14.00 per day. Children under 12 years of age, half-rate; servants assigned to special quarters \$6.00 per day.

Adjacent to Challenger Inn are the Skiers' Chalets, designed especially for occupancy by contestants in winter sports events, but available for public occupancy when no events are in progress. The five Chalets have a varied number of rooms, each Chalet having central bathrooms, one for women and one for men. The rooms accommodate one to four persons, and the European plan daily rates are: \$2.00 per bed, per person, without running water, and \$2.50 per bed, per person, with running water.

Meals at Challenger Inn may be taken in the Cafe Continental, The Ram, or Skiers' Cafe.

Winter sports equipment may be purchased or rented at the shops in Sun Valley. Sports apparel may be purchased at the smart "Picard of Sun Valley" shop in the Lodge, or at Lane's General Store at Challenger Inn. Fashionable attire for men and women suitable for every occasion may be selected. Telephone, telegraph, doctor and hospital service are available; drug store, U. S. Post Office, gift, flower and curio shop.

Activities: Visitors to Sun Valley find practically every form of winter sport. The Sawtooth Mountain slopes—covered with "powder" snow—dry, soft and uncrusted, are close to The Lodge and Inn. Frequent bus service is operated to and from the ski-lifts. There

are eight electrically-powered chair ski-lifts, one 3540 feet long with 1150-foot rise on Proctor Mountain; one 2360 feet long with 710-foot rise, and one 1200 feet long with rise of 160 feet for novices—both on Dollar Mountain; one 1860 feet long with 600-foot rise on Ruud Mountain, and the Baldy Mountain lift, 11,544 feet long—in three stages—rising 3230 feet. It carries skiers from the valley floor to the top of Baldy Mountain in approximately 20 minutes and accommodates 200 skiers per hour. There is also a new lift which terminates at the "Round House" on Little Baldy and operates through Cold Springs Canyon. This lift is 3080 feet long and has a vertical rise of 1072 feet. Ski-lift tickets, including transportation by bus from Lodge or Inn, and good for use on all ski-lifts, one day \$4.00; 3 consecutive days \$11.25; one week \$22.50; single ride on Baldy Mountain lift \$3.00. A comfortable shelter, known as the "Round House", serving hot luncheons and drinks at reasonable prices, is located at top of second stage of the Baldy Mountain chair-lift. There are shelter houses also on Dollar and Proctor Mountains.

There is a variety of downhill runs up to 4 miles in length for expert, intermediate and novice skiers. Sun Valley's Championship slalom course, one of the world's finest, is located on slopes of Ruud Mountain.

There are many miles of long, open, beautiful mountain slopes for touring. Cabins are located at the foot of Pioneer Range where overnight accommodations may be arranged.

Otto Lang, executive director of the Sun Valley Ski School, heads a corps of expert instructors who offer private and class instruction. Class rates are \$5.00 per day, \$3.50 for a half day, \$12.00 for three days, or \$22.00 for six lessons to be taken within 10 consecutive days, including Sundays. Instructors when available outside ski school hours and on Sunday for private lessons by appointment. Rate \$8.50 per hour \$3.00 for each additional person using same instructor.

Sun Valley will offer three "Learn

to Ski" weeks in January 1948 as follows: January 4 to 10 inclusive; January 11 to 17 inclusive, and January 18 to 24 inclusive. The flat rate of \$75.00 includes accommodations in the Skiers' Chalets for six nights only; all meals in the Skiers' Cafeteria from breakfast Sunday morning through dinner Saturday evening; six days ski lessons which may be exchanged for skating lessons, if desired; unlimited use of all ski lifts and ice skating rinks. There will be no rebate for room, meals, or activities. Guests who arrive early or remain after the scheduled "Learn to Ski" weeks will be charged regular rates for room, meals and activities.

Sun Valley offers superb spring and early summer skiing in the newly developed Boulder Basin area, just 18 miles from Sun Valley proper. Lying at an elevation of 9,000 feet, Boulder Basin is reached by thrilling trip over mountain roads in a "jeep". Here skiing is enjoyed until the fore part of July. It is also an ideal spot for rock-climbing, picnics and steak fries.

Ice skating is popular with Sun Valley guests—4 rinks—75 cents per day, \$3.75 per week; colorful evening skating parties. Expert skating instructors available for private lessons by appointment. Rate \$4.00 per lesson for beginners, \$5.00 per lesson for advanced students. Skates rented \$1.00 per day.

Drive-yourself automobile service available at minimum mileage-rate charge. No charge for use of warm water swimming pools.

Special winter sports events including Ice Skating Carnivals; Sixth Annual Inter-Collegiate Ski Meet; Seventh Mid-Winter Sports Carnival and Interstate Ski Meet; Sun Valley Ski Club Meet; Eighth Annual Open Competition for the Harriman Cup; Idaho American Legion Junior Championships and the Sun Valley Snow and Spring Sports Meet. Grandstand facilities and admission to the skiing events at popular prices.

Further Information: Address W. P. Rogers, general manager, Sun Valley, Idaho, for reservations and literature.

Montana



The following winter sports regions of Southwest Montana are conveniently reached from Dillon or Butte, on the Union Pacific's line between Salt Lake City, Ogden, Pocatello and Butte. Through service connections at Pocatello to and from the East, the Southwest and the Northwest.

31 BEEF TRAIL. Location: In Deerlodge National Forest, elevation 6000 feet, 6 miles southwest of Butte, Montana.

Accommodations: Winter sports visitors to this area make Butte their headquarters. Here one finds splendid and very complete hotel accommodations at reasonable rates. There are restaurants, dining-rooms and cocktail lounges offering varied menus; shops and stores; movies and other forms of entertainment. Telegraph and telephone service; doctors and hospitals. Winter sports equipment on sale in Butte. Emergency first aid on the sports area. Lunches available in Ski Club shelter.

Activities: The winter sports activities all take place on the play area, 6 miles southwest of Butte. They include one 40-meter ski jump and one intermediate jump; three ski tows, at a nominal charge, one 1700 feet long with vertical rise of 400 feet; one 1550 feet long with 250 feet rise, and one beginners' tow 700 feet long. There is a ski run 2000 feet long which is electrically lighted for night use; a run of 1000 feet as well as shorter runs for beginners and open practice slopes. The Butte Ski Club warming lodge on the area is open to the public free of charge when members are present.

Instructions on week-ends.

Further Information: Address Supervisor, Deerlodge National Forest, Butte, Montana.

32 ELKHORN SPRINGS. Location: In Beaverhead National Forest, 42 miles west of Dillon, Montana, on the Union Pacific, and one mile from Elkhorn Hot Springs. Elevation 7500 feet.

Accommodations: Hotel or individual cabin accommodations can be obtained at Elkhorn Hot Springs or visitors may make headquarters in Dillon, where comfortable accommodations are available. Excellent meals can be obtained at the Elkhorn Hotel three times a day. Lunches are sold at the ski run on week-ends.

Activities: One ski jump 100 feet long; 1500 feet long ski lift at small charge; ski runs, 1800 feet, 2000 feet and 2600 feet; Meadow at base of run 200 feet wide and 500 feet long with three percent slope for beginners. Two small tent shelters. Equipment available in Dillon. First aid at Dillon and on area week-ends.

Further Information: Address Mr. Charles Haight, proprietor of the Elkhorn Hotel, or the Forest Supervisor, Beaverhead National Forest, Dillon, Montana.

Oregon



The delightful Winter Sports regions of Oregon are conveniently reached from points along the Union Pacific main line into the Northwest, particularly from Baker, Pendleton, The Dalles and Portland. The time-saving, daily Streamliner "City of Portland" (no extra fare) provides excellent transportation between the East and all these cities.

14 ANTHONY LAKES AREA. Location: Near the 8000 foot summit of the Elkhorn Range in the Whitman National Forest. Located 21 miles west of North Powder (junction of U. S. Highway 30), 34 miles from Baker and 24 miles from Haines, Oregon, both stations on the Union Pacific Railroad.

Accommodations: Cabins accommodate up to six each may be rented. Also dormitory accommodations for 75 men and women.

Activities: Natural terrain and snow exceptionally fine for skiing. Elevation varies from 6000 to 9000 feet, offers every kind of both open and wooded slopes. Average snow depth about 8 feet or more and is nearly always "powder" snow. 2400-foot ski tow.

Write Harold A. Lee, Anthony Lakes, Haines, Oregon, or Baker Chamber of Commerce, Baker, Oregon.

12 CRATER LAKE NATIONAL PARK. Klamath Falls is nearest railroad station. Highways open throughout the winter. Season early December to late May. The total snow fall for the winter season—50 to 75 feet.

Accommodations: Limited. Meals served at Government Headquarters prices reasonable. Bunk house where skiers may stay overnight for \$1.00 provided they bring own bedding. Cot and mattress furnished. Modern hotel accommodations, stores and similar facilities available in Klamath Falls, 62 miles from Crater Lake.

Activities: Skiing conditions generally ideal and a great variety of ski runs and practice hills available. The road is kept open to the rim of the Lake, elevation about 7000 feet, and slopes of varying speeds lead down from the rim to Government Headquarters, about 1½ miles.

A portable ski lift operates during the season at the rim of the Lake.

Address Klamath County Chamber of Commerce, Klamath Falls, Oregon.

SANTIAM PASS WINTER SPORTS AREA. Location: In the Willamette National Forest of Oregon, 43 miles from Bend, the nearest railroad station (Union Pacific connection at The Dalles). Daily stage service from Bend to the Camp. The elevation is about 4800 feet.

Accommodations: A rustic building with annex, heating system, electric lights, with dormitory accommodations for 90 guests (40 women, 50 men); cafeteria and short order meal service.

Activities: The ski slopes are about $\frac{3}{4}$ mile from the Lodge. One 500-foot and two 100-foot endless rope-tows; two rustic warming shelters—sandwich and soft drinks, provide service for skiers. An intermediate slope near the lodge and a 300-foot rope-tow makes moonlight skiing a real delight. The average snowfall in this region is ten feet. The skiing season extends from November 15 to April 15.

Further Information: Address Mr. J. R. Bruckart, Supervisor of Willamette National Forest, Eugene, Oregon.

11 SKYLINER'S PLAYGROUND. Location: The Skyliner's Playground is on the north slopes of an easterly prong of the Cascade Range in the Deschutes National Forest 11 miles west of the city of Bend (Union Pacific connection: The Dalles). Union Pacific Railroad main line service is available by means of stage connections to and from The Dalles.

Accommodations: In the city of Bend there are excellent hotel accommodations, all on the European plan, modern cafes, theatres, shops, and stores. Parties up to 25 can be bunked in log warming hut. The average temperature in the Playground area is: Minimum 24, Maximum 32; in Bend it is usually 10° higher. The average snowfall varies from 3 to 6 feet.

Activities: The ski slopes at the Skyliner's Playground are 11 miles from Bend. The highway between Bend and the Ski Area is kept open all year.

The main slalom course and downhill run is approximately 1½ miles in length with a total vertical fall of approximately 1000 feet. Practically every other combination of slope and length of run is available for all classes of skiers.

There is a 10-mile loop trail, with three shelters, which has been developed especially for parties wishing to make cross-country trips.

Further Information: Address Bend

Skyliner's, Bend, Oregon, or Bend Chamber of Commerce, Bend, Oregon.

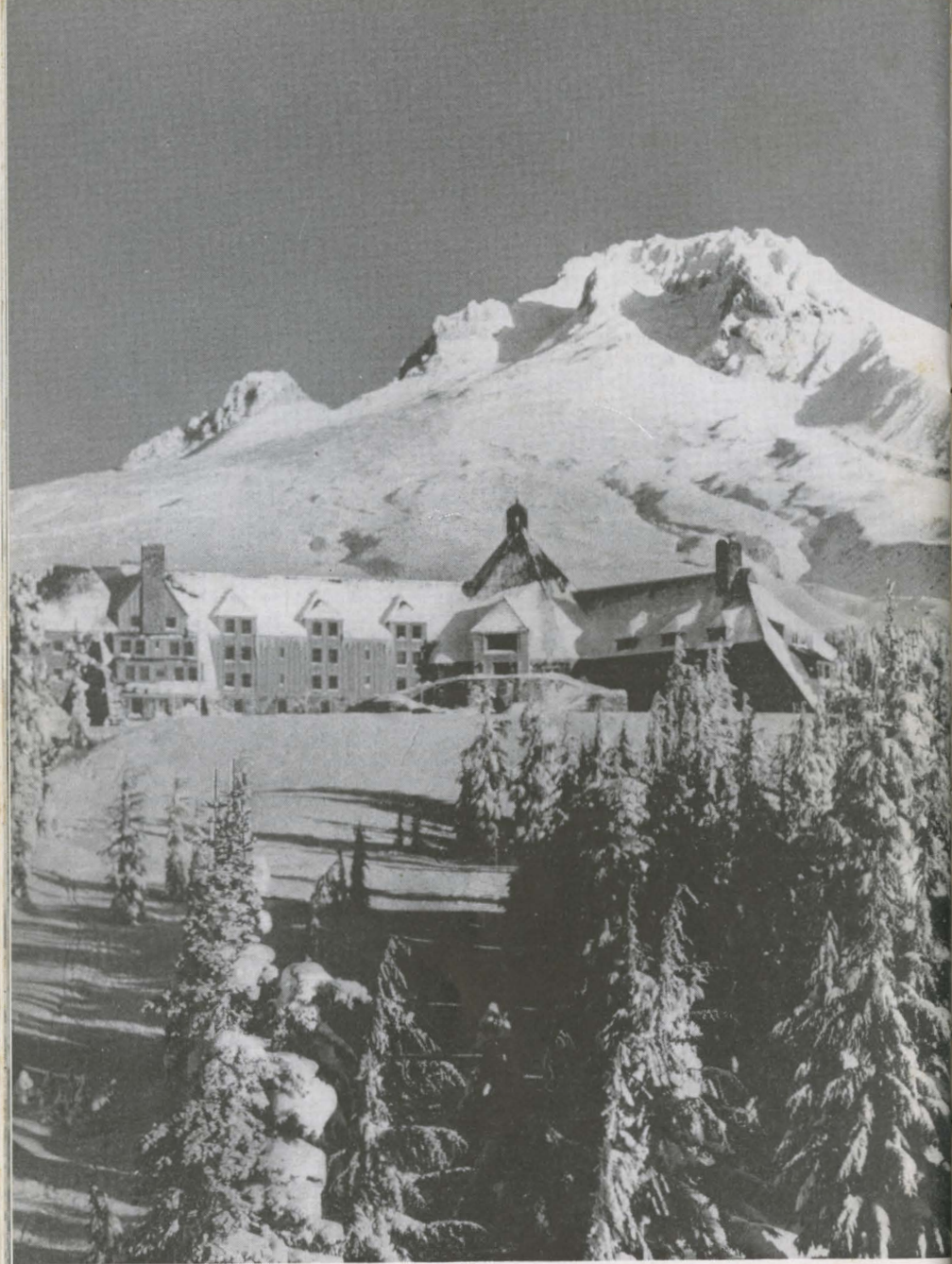
TIMBERLINE LODGE. Location: Situated in the heart of the deep snow country of the Pacific Northwest, 63 miles east of Portland, on the southern slope of snow-crested Mt. Hood, 6000 feet above sea level. Daily bus service between Portland, served by Union Pacific, and Timberline Lodge over paved and snowplowed highway, \$3.91 for the round trip.

Accommodations: Within the four stories of Timberline Lodge will be found ski lounge, main lounge, balcony lounge, dining rooms, ski grill, deluxe guest rooms, regular guest rooms and guest dormitories. The Lodge also embraces smart ski and apparel shops.

All deluxe and regular guest rooms have private bath. All rooms have private telephone and are steam heated. European plan per day: Single or double standard rooms at \$7.00; corner rooms \$8.50 and \$9.50; parlor bedrooms, with fireplaces, at \$12.00 and \$14.00. Club quarters and dormitories for men and women, \$2.00 per person. Seasonal rates on request. Breakfast average \$1.25. A la carte service for luncheon about \$1.50, and table d'hôte dinners are served at \$2.00 to \$3.25.

Ski season from November through June with an average daytime temperature of 26 degrees. Average snow depth 12 feet.

Activities: Nursery slopes at the very door of the Lodge are ideal for beginners—while experts train on the steep walls of Salmon and White River Canyons, the famous Ski Bowl, or the National Championship Race Course that has a descent of 4500 feet in 2.74 miles. There is also Blossom Ski Trail, for experts only, which is a fast, twisting, "woods-running" trail that drops 2200 feet in its four-mile length. An automatic ski-lift with suspended chairs, begins about 600 feet from the Lodge and runs to a point a mile higher on the mountain. At the summit of this ski-lift stands Silcox Shelter, a large warming hut. Timberline Lodge also has recently put in three new ski tows above the timber-



line, each designed to serve the needs of the different classifications of skiers—the novice, advanced beginner, the intermediate, and the expert. On week-ends and holidays ski buses serve a network of timbered ski trails. Timberline Lodge Ski School provides expert instructors with class lessons, ½ day (2 hours) \$2.00, and full day (4 hours) \$3.00. Special rates by the week or for private lessons. Snowshoeing is also enjoyed by winter visitors and experts climb Mount Hood the year around. Elevation is 11,245 feet.

Further Information: For reservations, literature and further information address Timberline Lodge, Timberline, Oregon.



TOLLGATE RECREATIONAL AREA.

Location: In the Blue Mountains of Eastern Oregon about 40 miles south of the Washington State line. Reached by stage from Union Pacific stations Weston, Oregon (21 miles) or Elgin, Oregon (20 miles). Elevation of ski

bowl is 5500 feet; average temperature in December 25°, January 20°, February 20°, and March 25° to 30°.

Accommodations: The resort lies at the summit of the Blue Mountains. Tollgate Hotel, nine rooms, without bath. European plan rates. Small dining room. Lunches are served skiers at the Ski Club's warming hut about one half mile from the hotel.

Activities: The ski slopes are about one-half mile from resort—ski run one-half mile in length on 12% grade for amateurs; run of a quarter mile and 18% grade for intermediate; short practice slope 700 feet long, with drop of 225 feet in its length; main slalom hill 900 feet long has drop of 400 feet. Average snowfall is from 8 to 12 feet. The ski terrain is wooded and there is a variety for novice, intermediate and expert skiers. Skating, without cost, early in season on Langdon Lake, maintained by the Ski Club and Forest Service.

Address Tollgate Recreational Area, Walla Walla, Washington.

Ski lift above the clouds and Magic Mile run, Mt. Hood, Oregon



Utah



The Winter Playgrounds of the Wasatch Mountains in Utah are served by many fine main line Union Pacific trains from the East and the West to Salt Lake City and Ogden.

ALTA AREA. Location: Twenty-five miles southeast of Salt Lake City in the Wasatch National Forest at the head of Little Cottonwood Canyon. Elevation at Alta Lodge 8500 feet, five nearby peaks rise to over 11,000 feet. It is reached over a paved highway, kept open all season, from Salt Lake City by car or bus. Buses are operated by Lyle Nicholes, Utah Transportation Company, with terminal at West South Temple Street, Salt Lake City. Bus fare, \$2, each way. The average temperature is 23° from December to March, when it is 40°. Alta is especially noted for its abundance of light and dry powder snow. The season extends from November through May.

Accommodations: The Alta Lodge is open throughout the skiing season, and offers simple accommodations, ranging in price from a bed in the men's or women's dormitory at \$6.50 American Plan to about \$18 a day for two people, American Plan, in private bedrooms with shower adjoining. Luncheons and dinners are served to non-resident guests, but it is advisable to telephone a reservation in advance (Phone: Alta No. 4). It has a ski shop where skis may be repaired and small ski supplies purchased. The Lodge is built right at the foot of the principal ski slopes in Collins Gulch.

The Alta Ski Chalet offers dormitories and rooms, in a price range of \$7 to \$9 per person, American Plan. These accommodations are at present extremely simple in character. Rooms are without running water.

The Snow Pine Lodge, operating in the U. S. Forest Service Shelter, provides meals on Saturdays and Sundays; short orders other days, for skiers spending the day at Alta. It has no overnight accommodations, but has a ski shop where skis may be rented, and operates several rope tows.

The Hell Gate Mine Cabin offers sleeping bag space and the use of a stove for a dollar a night per person.

Activities: Alta has one of the finest ski terrains in the West. The ski slopes are at present served by three chair lifts and five rope-tows. An additional chair-lift running to Germania Pass will be built next year. The Collins lift carries the skier up a vertical rise of 700 feet into Collins Gulch. From that point the Peruvian lift rises a further 500 feet to the summit of Peruvian Ridge. These rides open up a wide variety of slopes for descent, ranging from the fairly simple courses such as "The Corkscrew" to the steep pitches of "The Wildcat," delight of experts. Rustler Lift, located in the Alta valley floor on Rustler Mountain,

offers a vertical rise of 300 feet, and was designed to offer accessible skiing for the novice. Cost of rides on these lifts vary, depending on the vertical rise, but the skier may purchase for \$2.50 a day pass which entitles him to the all-day use of all lifts and tows without restriction. On Saturdays, Sundays and Holidays light lunches can be obtained at The Watson Shelter, a cabin at the top of Collins Lift. Ski touring is a specialty at Alta and a number of cabins are located in the upper mountain areas where guided parties may have lunch or spend the night in sleeping bags.

The Ski School at Alta is headed by Sverre Engen, one of the famous Engen brothers, assisted by his wife. Rates: \$3 a day in classes (4 hours), or \$5 per hour for private lessons. A number of important ski races are held at Alta every year, being as follows: The Snow Cup Race in December, sponsored by the Salt Lake City Junior

Chamber of Commerce Winter Sports Club; and The Alta Cup, a three-day race, put on by The Alta Ski Club. The Alta lifts are operated by The Salt Lake City Winter Sports Association, which maintains a trained ski patrolman on duty at all times in Alta for first aid and patrol work. The Salt Lake chapter of the National Ski Patrol functions in Alta on weekends.

Further Information: Communicate with Alta Lodge, Ted DeBoer, Manager, Sandy, Utah; Alta Ski Chalet, Jay Jacobsen, Manager, Sandy, Utah; Salt Lake City Winter Sports Association, Fred Speyer, Manager, Holaday Boulevard, Salt Lake City, Utah; Chamber of Commerce, Salt Lake City, Utah.

BRIGHTON AREA. Location: This ski region is situated in the Wasatch National Forest, 25 miles southeast of Salt Lake City at the head of Big Cottonwood Canyon, about 8700 feet above



Attractive Alta Lodge, Alta, Utah





This abundance of dry, powder snow is found at Brighton, Utah.

sea level. It is served by buses from Salt Lake City, operated by the Utah Transportation Company. The round trip fare from Salt Lake City to Brighton is \$3.22; students \$1.46. The approximate average temperature in December is 18°, in January 16°, in February 21°, and in March 24°. Roads in excellent condition all year.

Accommodations: Alpine Rose Lodge, open all year, provides good facilities for guests, serving dinners and offering overnight accommodations—rate \$6.00 per day; \$35.00 per week. In addition to the Lodge accommodations there are ten cottages, with or without housekeeping accommodations, available by the day or week, ranging from \$7.00 to \$12.00 per day for four people. Over four persons, \$1.00 per person, per day. Weekly rates in proportion. Bedding and fuel furnished. Dormitory rates for either sex \$1.50 per day, furnishing own sleeping bags. Telephone.

Activities: Many open terrain ski trails from the floor of the basin travers-

ing the steep pine-covered Cottonwood slopes. The power-driven ski lift located on Launder's Hill back of Alpine Rose Lodge is 2300 feet long with a vertical rise of 600 feet; travels 3 miles per hour. Rates for ski-lift rides are: Single ride 15c; 8 rides for \$1.00; all-day pass \$2.00. Skiing season from November 1 to May 1.

Further Information: Alpine Rose Lodge, Brighton, Utah, or the Chamber of Commerce, Salt Lake City, Utah.

SNOW BASIN. Location: Snow Basin is a region of bowls and basins 17 miles east of Ogden, Utah, on the eastern slopes of Mount Ogden in Cache National Forest. It is about 45 minutes from the Ogden business district by motor over an all-weather, hard-surfaced road. The elevation of the basin floor is 7000 feet rising up to 10,000 feet. Average temperature during December is 20 degrees, January 15 degrees, and March 20 degrees. Powder snow is the rule.

Accommodations: Winter Sports visi-

tors to Snow Basin make Ogden, important Union Pacific junction city, their headquarters. As yet there are no overnight facilities in Snow Basin itself. The Winter Sports season begins in December, sometimes earlier, running through April. A rustic shelter built by the Forest Service is available at Snow Basin, with refreshments and a first-class ski shop with skis for rent.

Activities: The ski slopes, all lengths and gradients for skiers of any skill, are about 100 yards from parking area and shelter. The ski terrain is mixed, with cleared slopes up to 8000 feet. At present there is one chair lift, a mile-long, with a vertical rise of 1300

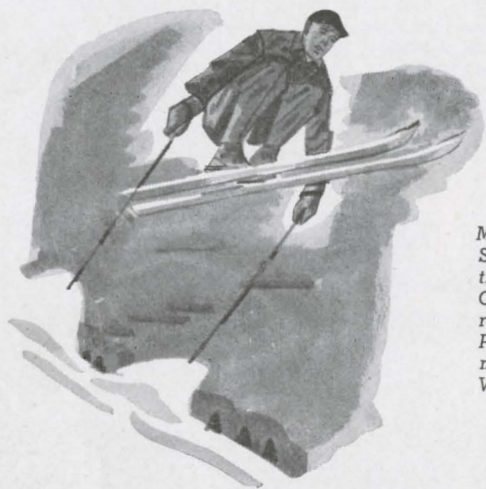
feet, to the head of Wildcat Run. Chair lift prices: Adult all-day, \$2.50; Singles, 35c; 10 rides, \$3.00; Special Saturday Student rate, \$1.50. One rope tow serves Becker Hill, a gentle slope excellent for beginners and novices. A well-organized, specially trained Ski Patrol, under the leadership of Dr. Arthur Perkins, patrols the area. Snow Basin was the site of the 1947 National Downhill and Slalom Races. An active and excellent Ski School is available for private or group instruction.

Further Information: Address Ogden Chamber of Commerce, or Snow Basin Ski Club, Ogden, Utah.

Chair ski-lift at Snow Basin, Utah, near Ogden



Washington



Most of the snow sports areas in the State of Washington are located on the slopes of the main range of the Cascade Mountains, all conveniently reached by Union Pacific trains to Portland, Oregon, as well as Tacoma, Seattle, Yakima and Spokane, Washington.

1 AMERICAN RIVER SKI BOWL. Location: In the center of the Cascade Range at Chinook Pass on the Naches Highway, near the eastern border of Rainier National Park, about 40 miles west of Union Pacific station at Yakima. The American River region is 3200 feet above sea level and the Quartermile region 3800 feet. There is a good motor highway from Yakima to Chinook Pass and visitors make their arrangements and transportation in Yakima.

Accommodations: A club house is open weekends. Meals are served at lunch counter. There are also 20 cabins where lodging and meals can be secured at popular prices. Many visitors make their headquarters in Yakima where ample hotel accommodations are available, and at which point one may procure skiing equipment, telephone, telegraph, doctor and hospital service.

Activities: The general terrain is partially open and wooded, with opportunity for good ski touring higher

up in the Alpine terrain. Quartermile slope of $2\frac{1}{2}$ miles has a 3000-foot drop. There is a 1200-foot rope tow and the charge for its use is \$1.00 for a day's pass or four trips for 25c.

Further Information: For reservations or information address Yakima Ski Club, Yakima, Washington.

3 LEAVENWORTH AREA. Location: At the very base of the eastern slopes of the Cascades, one mile north of the city of Leavenworth, and 25 miles northeast of Wenatchee on Stevens Pass Highway lies the Leavenworth Winter Sports area of the Wenatchee National Forest, elevation 1200 feet. Leavenworth is served by Great Northern Railway from Seattle. The area is reached by a good road, kept open all winter, without any climbing. Average temperature 30° in December, 10° in January and February, and 30° in March.

Accommodations: Leavenworth offers several residential-type hotels and cabins at moderate rates. Season



Skiers on Mt. Rainier gather at Paradise Lodge.

from December 1 to March 1.

Activities: The ski slopes are about

one mile from Leavenworth. In this delightful skiing region will be found jumping hills in the A, B and C classes; a slalom course and a large area of moderate slopes cleared for amateur skiing. Instructors charge \$1.00 per day. Average snowfall 3 feet.

Further Information: Address U. S. National Forest Service, Wenatchee, Washington.

MT. BAKER LODGE. Location: In the heart of Mount Baker National Forest, Northwestern Washington, 60 miles northeast of Bellingham at an elevation of 4200 feet. It is easily reached in about 1½ hours from Bellingham, a point served by Great Northern Railway from Seattle, by motor stage over a splendid State highway kept open

1

A long season is enjoyed on Mt. Rainier.





A deep blanket of snow softens the rugged outlines of mighty Mt. Baker.

all winter. Average temperature December is 26°, January 28°, February 25°, and March 34°.

Accommodations: The resort consists of main building with 22 sleeping rooms—steam heated with bath—European plan \$6.00 double, \$4.00 single, and 15 cabins and cottages. In the main building is a coffee shop with counter and booths seating approximately 75 persons. The Forest Service maintains a large modern ski hut of rustic design. Telephone and telegraph, doctor usually on weekends; radio and juke box for entertainment. Season December 15 to May 1.

Activities: Mt. Baker ski fields nestle in the storm protected valleys of tower-

ing Mt. Baker and rock-faced Mt. Shuksan. Its snowfields embrace northerly slopes—powder snow slopes—that delight both expert and novice skiers. The ski slopes are adjacent to the lodge and are served by three ski lifts, 600 feet, 800 feet and 1030 feet in length respectively. Slopes are varied. Numerous opportunities for touring along open terrain and over downhill runs, diversified and interesting, ranging from a few hundred feet to two miles. Ski instruction is given either privately or in classes under competent instructors. Equipment may be rented. Average snowfall—15 to 25 feet.

Further Information: For information

and literature address Mt. Baker Development Co., Bellingham, Wash.

8 MOUNT SPOKANE STATE PARK. Location: Mount Spokane, 6000 feet in elevation; is located 28 miles northeast of Spokane, Washington, served by Union Pacific. Twenty-two miles of the road to the Park are paved; the highway is kept open right to the Lodge through the winter months. There is bus transportation through the season, starting December 1.

Accommodations: A lodge, reached at the end of auto road, has lounge, lunch counter, waxing room and similar facilities. Dormitories are available for men, also for women. The season extends for about five months beginning December 1.

Activities: There are three rope tows operating above the Lodge and a 3300-foot chair lift which takes skiers up an elevation of 1200 feet. A ski school is operated in conjunction with the chair lift. Ideal ski slopes stretch out in all directions from the Lodge. A downhill run of 1.6 miles has drop of 2600 feet. The general terrain for touring and downhill runs, open and wooded, appeals to all skiers, the novice, medium and the expert. Average snowfall of 9 feet.

Further Information: Address Spokane Chamber of Commerce, Spokane, Washington.

6 PARADISE LODGE. Location: Paradise Lodge occupies an ideal spot in beautiful Paradise Valley, 5400 feet above sea level, in the southern part of Rainier National Park. This is a snow-covered region of rugged mountain peaks and broad sloping valleys with majestic Mount Rainier towering 14,408 feet above the level of the sea. It lies southeast of Seattle 108 miles, of Tacoma 76 miles, and northeast of Portland, Oregon, 176 miles. Motor coaches provide service on weekends over the all-year highway from Tacoma to Paradise. Round trip motor coach fare from Tacoma is \$11.50, including the Federal Tax.

Accommodations: Paradise Lodge is a modern rustic, Chalet type hotel.

The appointments, designed for the convenience and comfort of the guests, include the lobby-lounge; a dining room with cafeteria style meal service with a seating capacity of 200; a special ski shack; 27 guest rooms—9 with bath and 18 without bath. Paradise Lodge will open in early December and will be open weekends only for the entire season, closing the first part of April. Midweek visitors will find comfortable overnight accommodations, meals, and other facilities available at National Park Inn at Longmire, which is 13 miles below Paradise.

Activities: The sensational ski runs of the Paradise Valley region lure skiers from all parts of the nation. There is ample snow, 21 feet on the ground in February and March, which allows the exhilarating sport to be enjoyed from December through April. The ski slopes spread out directly from Paradise Lodge. The ski tow—1000 feet with rise of 400 feet—hand hold—is available at a charge of 4 rides for 25c or all day for \$1.50.

There are thrilling downhill runs for the expert, the 4-mile run with 4500-foot drop in elevation, Camp Muir to Paradise; for the intermediate, a run of 1½ miles with a drop of 1000 feet, Panorama Point to the Valley; and for the amateurs, the 1200-foot run with a drop of 400 feet, as well as many hills with slopes of lesser degree. Reasonable rates are charged by competent ski instructors.

Further Information: Address Rainier National Park Company, P. O. Box 1136, Tacoma, Washington, for literature, and reservations.

5 SNOQUALMIE SUMMIT INN. Location: In the Snoqualmie National Forest of the Cascade Range at Snoqualmie Pass, elevation 3004 feet. Reached from Seattle by 63-mile motor ride over Sunset Highway (U. S. No. 10) or by 61-mile train ride from Seattle to Milwaukee Road station at Hyak 2½ miles from Snoqualmie Summit Inn.

Accommodations: Ten modern cabins with double beds are available to guests.

Activities: Skiing is the principal sport. The ski slopes, about one-half mile from the Inn, are semi-open, rise 500 feet and have runs of a mile in length. The ski tow, with motor power rope, run of 500 feet, rises 200 feet. Average snow fall is 120 inches.

Further Information: Address Snoqualmie Summit Inn, Inc., North Bend, Washington.

2 STEVENS PASS AREA. Location: Summit of the Cascade Mountains, 60 miles west of Wenatchee; 80 miles east of Seattle, in the Wenatchee National Forest. Elevation 4000 feet. Crossed by State Highway 15, open year 'round. Served, from Seattle, by Great Northern RR which makes stops at Berne station on the east slope of the Cascades and at Scenic on the west slope. Ski season from December 1 to April 15. Ideal snow for all winter sports; average depth 108 inches.

Accommodations: Stevens Pass Ski Lodge, modern, rustic construction, offering dormitory-type accommodations for 50 persons at \$1.00 per person. Bring your own sleeping bag. Hot meals served in main dining room all day; snack bar in recreation room. Built by U. S. Forest Service, under concession to Roy Weckworth, Star Route, Leavenworth. Ski shop and waxing room. Summit Hotel with cabins; meals served at moderate prices. Proprietor Jess Maddux, Star Route, Leavenworth, Washington.

Activities: Located in the heart of the mighty Cascade Range. There are six ski lifts; one T-bar type lift. Four large tows in a series take you for a two-thirds mile ride, over 1000 feet in elevation.

Further information: Write Forest Supervisor, Wenatchee National Forest, Wenatchee, Washington.

4 THE MILWAUKEE ROAD SKI BOWL. Location: Situated two miles from Snoqualmie Pass—Summit of the Cascades. Special snow trains from Seattle and Tacoma, Saturdays, Sundays and holidays, carry winter sports enthusiasts to Hyak Station on the main line of The Milwaukee Road,

60 miles from Seattle and 90 miles from Tacoma.

Accommodations: This resort caters to one-day visitors. There are no accommodations for overnight guests. The Lodge has dining room, lounge, modern cafeteria. Telegraph, telephone, doctor and hospital service are available. The season extends for three or four months with minimum temperature 20 degrees and maximum 39 degrees.

Activities: All the desirable features that appeal to the skier, expert, intermediate and novice are found in this area. The Ski-Boggan Sled Tow carries 32 passengers a distance of 1800 feet on approximately 50% grade handling over 400 skiers and non-skiers an hour.

The spectacular lift opens up two new ski areas for the advanced skier and affords runs up to a mile. This is the only lift which can take jumpers to the top of the take-offs without effort and was used at the National Olympic Tryouts on March 22-23, 1947.

In addition to the Ski-Boggan Lift, the Milwaukee Lifts, Inc., operate one single and two double tows, a total of five tows, and advances the skier from the novice to all degrees of efficiency. The charges for the lifts are \$1.00 for rope tows on Saturdays and Sundays, \$1.50 for all tows, including the Ski-Boggan Saturdays, and \$2.00 on Sundays—Single rides on rope tows 10c, single ride including round trip on Ski-Boggan 25c.

The ski slopes begin 200 yards from the Lodge. Steep open and very fast downhill runs of 1¼ miles, from the top of Rocky Point to the Lodge appeal to the expert. Also many ski lanes have been cleared for the intermediate and novice skiers. There are approximately 60 acres of rolling open terrain for instruction classes.

New Class A and B jumping hills—site of the 1941 National Championship jumping event, in which Torger Tokle set a record of 288 feet . . . also the scene of the National Olympic Trials in March 1947.

Further information: Address The Milwaukee Road, Room 653 Stuard Bldg., Seattle 1, Washington.

Wyoming

The Union Pacific conveniently serves the Wyoming Snow Sports Playgrounds. The Medicine Bow National Forest region is reached from main line points Laramie and Walcott; Teton and Jackson Hole regions from Victor, Idaho, on its Pocatello-West Yellowstone line, or by connecting bus from the main line of the Union Pacific at Rock Springs, Wyoming.



37 **BARRETT RIDGE WINTER SPORTS AREA.**

Location: In the Medicine Bow National Forest, on the west side of the Snowy Range, about 30 minutes drive south and east from Saratoga, Wyoming, on State Highway 130. Visitors use Union Pacific trains to Rawlins, thence car or bus to area.

Accommodations: Headquarters may be made in Rawlins or Saratoga, hotels and auto courts available at both. The Ryan Park Winter Sports Club operates shelter cabin at ski area where refreshments may be purchased.

Activities: The area, situated at an elevation of about 8800 feet on the north slope of Barrett Ridge, offers good skiing conditions from mid-December to mid-April. A 700-foot rope tow having a 160-foot rise serves an open slope for intermediate and beginner skiers. A chair lift 2570 feet long with an 800-foot rise serves the 2600-foot "A" run (expert) and a 3700-foot intermediate run. Various cross-country trips can be enjoyed on most any terrain desired.

Further Information: Address Gene Brenniman, Rawlins, Wyoming, Dr. Ray Corbett, Saratoga, Wyoming, or District Forest Ranger, Ryan Park, Wyoming.

38 **JACKSON HOLE SKI AREA.**

Location: The Jackson Hole country lies in the

northwestern part of Wyoming, a few miles west of the Continental Divide and surrounded by the broad terrain of the Teton National Forest. Elevations of the valley vary from 6200 to 8400 feet. It is best reached by automobile from Victor, Idaho, on the Union Pacific, 13 to 26 miles from the Jackson Hole area. It may also be reached from Rock Springs, Wyming, on the main line of the Union Pacific, 175 miles south of Jackson Hole. The average temperature during December is 18.2°; January 18°; February 17.4° and March 24.3°.

Accommodations: In Jackson approximately 500 beds available on the European plan, from \$1.50 up. The skiing season begins about the middle of November and extends to the middle of May.

Activities: Excellent ski slopes are to be found in an area ¼ to 13 miles from Jackson. Automobiles will be required to reach more distant slopes. Variety of downhill runs for all classes of skiers, expert, intermediate and novice. The slope at Teton Pass has a 2000-foot descent and a 3-mile continuous run. Jackson has 2 runs of 1½ miles each with a vertical drop of approximately 1900 feet. Runs vary from the 300-foot wide Elk Run to the Belly Roll, a racing trail to tax the skill of experts. The lower slopes provide gently rolling, novice and



View from the top of chair ski-lift on Snow King Hill, Jackson, Wyoming

practice areas and are served by two rope tows 1000 and 600 feet in length. Summit of the area is served by a new \$75,000 chair lift, 3800 feet in length and rising 1500 vertical feet.

Walter Prager, former Dartmouth coach and recently appointed coach of the 1948 Olympic Team, conducts the Ski School. Jackson Hole Open Meet, replacing the annual Tri-State Meet, is held in February and the Teton Spring Derby in April, both attract top-ranking skiers from the entire nation.

Ice fishing, skating, hockey, cutter races, dog-sled races, snow-plane rides, and ski-joring are other winter sports activities. The average snowfall is upwards from 80 inches.

Further Information: Address The Jackson Hole Chamber of Commerce, Jackson, Wyoming.



JACKSON HOLE LODGE. Location: Jackson, Wyoming. "At the foot of the Tetons."

Accommodations: New, architecturally rustic, but refined and comfortable to the last degree; steam-heated, bath with every room. Attractive, modern cottages in connection, all with private baths. Rates: \$6.00-\$8.00 per day for rooms or cottages with one double bed; \$8.50-\$12.00 per day for twin-bed accommodations. European plan.

Activities: See "Jackson Hole Ski Area."

For further information and reservations address: Woody Browning, Jackson Hole Lodge, Jackson, Wyoming.

Snowy Range Winter Sports Area

LIBBY CREEK AREA. Location: This popular winter sports area lies in the east central part of Wyoming, the Snowy Range of Medicine Bow National Forest, 30 miles west of Laramie. Laramie is on the main line of the Union Pacific. Private auto service from Laramie. Elevation at Centennial 7800 feet; at Snowy Range



Lodge 7900 feet, and at ski area 9200 feet. The 40-year average temperature in December is 22°, January 21.9°, February 23.2°, March 29.5°, April 37.9°, and May 46.8°.

Accommodations: The modern Connor Hotel at Laramie, operated on the American plan, has 80 rooms with bath, \$3.50 per day; 45 rooms without bath \$2.50 per day. The Centennial Hotel at Centennial has 10 rooms without bath at \$3.50 European plan; with meals about \$2.00 a day additional. Snowy Range Lodge has 10 rooms with bath, European plan, \$3.50 to \$5.00 a day, and 7 cabins with bath \$2.50; without bath \$1.50 and meals about \$2.00 per day. Doctor and hospital service in Laramie. The season extends about six months, spring months ideal for skiing.

Activities: The ski slopes are 40-minutes drive west of Laramie, 2½ miles beyond Centennial, and 1½ miles from Snowy Range Lodge. Automobiles are required to transport guests over good highways to the ski slopes. The ski terrain is open and lightly timbered, well protected from the winds. The main run is over three-quarters of a mile long, with slopes varying from 25 to 60 per cent. There is a modern chair-type ski lift 3000 feet long, as well as two rope tows, one 500 feet long and the other, for beginners, 150 feet long. A beginners' or practice slope is located close to the log shelter cabin, built by the Forest Service. There are cross-country runs aplenty. One of these, 8 miles in length, leads to a high, long and sensational slalom run off the Snowy Range to Brooklyn Lakes. A run of steep slopes varying 30 to 60 per cent is about three-quarters of a mile long. There are also toboggan runs. The snow is of good depth and excellent quality—lots of powder snow—December to April. The Snowy Range Winter Sports Club operates the ski tow and sponsors competent ski instruction at reasonable rates.

Further Information: Address Chamber of Commerce or Snowy Range Winter Sports Club, Laramie, Wyoming.

SUMMIT WINTER SPORTS AREA. Location: In the Medicine Bow National Forest, at the highest point on Highway U. S. 30, about 20 minutes drive east from Laramie and 50 minutes drive west from Cheyenne on that highway. Visitors may use Union Pacific trains to Laramie, thence by car or bus to the area.

Accommodations: Both Laramie and Cheyenne offer complete accommodations for visitors to this area, hotels, tourist courts, and rooming houses being available. Equipment stores, doctors, and hospital service are available in both cities as well as telephone service to the area. The Summit Tavern (meals and bar service) is located at the top of the area.

Activities: The area offers good skiing from December 15 to about May 1 at an elevation of about 8500 feet. One 825-foot rope tow with a raise of 200 feet serves the various runs and open practice slopes. Various cross-country trips can be enjoyed on a variety of terrain.

Further Information: Address District Forest Ranger, Box 971, Laramie, Wyoming.

Skiers await the chair lift at Libby Creek Area near Laramie, Wyoming.



Index

CALIFORNIA

	Page
Auburn Ski Club.....	2
Donner Trail Area.....	2
Giant Forest Winter Lodge.....	5
House of Vanderford.....	2
June Lake Area.....	5
Lake Arrowhead.....	6
Long Barn Area.....	10
Mt. Rose.....	9
Mt. Shasta.....	7
Mount Wilson Hotel.....	8
Norden Ski Hut.....	3
Norden Store and Ski Lodge.....	3
Pinecrest.....	10
Rainbow Tavern.....	3
Silver Tip Lodge at Fish Camp.....	8
Soda Springs Hotel.....	3
Sugar Bowl Lodge.....	4
Tahoe City Area.....	8
Tahoe-Nevada Area.....	9
Tuolumne County Region.....	9
Twain Harte Lodge.....	10
Wrightwood.....	12
Yosemite National Park.....	10

COLORADO

Arapahoe Basin.....	13
Aspen Ski Area.....	13
Berthoud Falls Inn.....	14
Berthoud Pass Ski Area.....	14
Drowsy Water Ranch.....	15
Estes Park Area.....	15
Glenwood Springs Winter Sports Area.....	16
Hanson's Lodge.....	15
Hot Sulphur Springs Ski Area.....	17
Loveland Pass Ski Area.....	17
Pikes Peak Ski Club.....	17
Radium Hot Springs Hotel, Idaho Springs.....	15
Rock Creek Ski Area.....	18
Salida-Monarch Pass Area.....	19
Sportsland Valley Lodge.....	15
Steamboat Springs Winter Sports Club.....	19
Van's De Stonehenge Lodge.....	15
Winter Park Ski Area.....	19

IDAHO

Alpette Ski Club Area.....	20
Bear Gulch Ski Area.....	21
Bogus Basin Area.....	21
Magic Mountain Ski Area.....	22
Payette Lakes Area.....	22
Sun Valley Winter Sports Area.....	22

MONTANA

Beef Trail.....	29
Elkhorn Springs.....	29

NEVADA

Mt. Rose.....	9
Tahoe-Nevada Area.....	9

OREGON

Anthony Lakes Area.....	30
Crater Lake National Park.....	30
Mt. Hood.....	31
Santiam Pass Winter Sports Area.....	30
Skyliner's Playground.....	31
Timberline Lodge.....	31
Tollgate Recreational Area.....	33

UTAH

Alta Area.....	34
Brighton Area.....	35
Snow Basin.....	36

WASHINGTON

American River Ski Bowl.....	38
Leavenworth Area.....	38
Mt. Baker Lodge.....	39
Mount Spokane State Park.....	41
Paradise Lodge.....	41
Rainier National Park.....	41
Snoqualmie Summit Inn.....	41
Stevens Pass Area.....	42
The Milwaukee Road Ski Bowl.....	42

WYOMING

Barrett Ridge Winter Sports Area.....	43
Jackson Hole Lodge.....	44
Jackson Hole Ski Area.....	43
Libby Creek Area.....	44
Snowy Range Winter Sports Area.....	44
Summit Winter Sports Area.....	45



"Young America" takes up a new sport.

PLAN YOUR TRIP WITH EXPERT HELP

Let one of Union Pacific's courteous and informed representatives assist you with the details of your trip. There is no cost to you and you will find his helpful suggestions will add materially to your enjoyment of the trip. Write, phone, or call at any of the Union Pacific offices listed below.

UNION PACIFIC TRAVEL OFFICES

Aberdeen, Wash....3 Union Passenger Sta.
Alhambra, Cal.....121 W. Main St.
Astoria, Ore.....Foot of 11th St.
Atlanta 3, Ga.....1232 Healey Bldg.

Bend, Ore.....112 Oregon Ave.
Birmingham 3, Ala...701 Brown-Marx Bldg.
Boise, Idaho....Idaho Bldg., 212 N. 8th St.
Boston 8, Mass.....294 Washington St.
Bremerton, Wash.....228 First St.
Butte, Mont.....609 Metals Bank Bldg.

Cheyenne, Wyo.....120 W. 16th St.
Chicago 3, Ill.....One S. LaSalle St.
Cincinnati 2, Ohio...303 Dixie Terminal Bldg.
Cleveland 13, Ohio...1407 Terminal Tower

Dallas 1, Texas...2108 Mercantile Bank Bldg.
Denver 2, Colo.....535 Seventeenth St.
Des Moines 9, Ia.....407 Equitable Bldg.
Detroit 26, Mich.....612 Book Bldg.

East Los Angeles, Cal..5454 Ferguson Drive
Fresno 1, Cal.....207 Rowell Bldg.

Glendale 3, Cal.....404½ N. Brand Blvd.

Hollywood 28, Cal...6702 Hollywood Blvd.
Huntington Park, Cal....7002 Pacific Blvd.

Kansas City 6, Mo.....2 E. Eleventh St.

Las Vegas, Nev.....Union Pacific Station
Lewiston, Idaho.....Room 7, Union Depot
Lincoln 8, Nebr.....130 S. 13th St.
Long Beach 2, Cal.....144 Pine Ave.
Los Angeles 14, Cal....Union Pacific Bldg.

Memphis 3, Tenn.....1720 Sterick Bldg.
Milwaukee 3, Wis.....814 Warner Bldg.
Minneapolis 2, Minn.....
.....890 Northwestern Bank Bldg.

New Orleans 12, La.....504 Canal Bldg.
New York 20, N. Y., Suite 350,.....
.....Rockefeller Center, 626 Fifth Ave.

Oakland 12, Cal....215 Central Bank Bldg.
Ogden, Utah.....Ben Lomond Hotel Bldg.
Omaha 2, Nebr.....
Cor. 15th & Dodge Sts. or 1614 Farnam St.

Pasadena 1, Cal.....Union Pacific Station
Philadelphia 2, Pa...904 Girard Trust Bldg.
Pittsburgh 22, Pa.....1419 Oliver Bldg.
Pomona, Cal.....Union Pacific Station
Portland 5, Ore...701 S. W. Washington St.

Reno, Nev.....25 Cladianos Bldg.
Riverside, Cal.....7th & Vine Sts.

St. Joseph 2, Mo.....517 Francis St.
St. Louis 1, Mo.....1223 Ambassador Bldg.
Sacramento 14, Cal.....217 Forum Bldg.
Salt Lake City 1, Utah.....

.....Hotel Utah, Main and S. Temple Sts.
San Diego 1, Cal.....320 Broadway
San Francisco 2, Calif...Geary at Powell St.
San Jose 7, Cal...206 First Nat'l Bank Bldg.
San Pedro, Cal.....805 S. Pacific Ave.
Santa Ana, Cal.....305 N. Main St.
Santa Monica, Cal...307 Santa Monica Blvd.
Seattle 1, Wash.....1300 Fourth Ave.
Spokane 8, Wash.....727 Sprague Ave.
Stockton 6, Cal.....207 Don Burton Bldg.

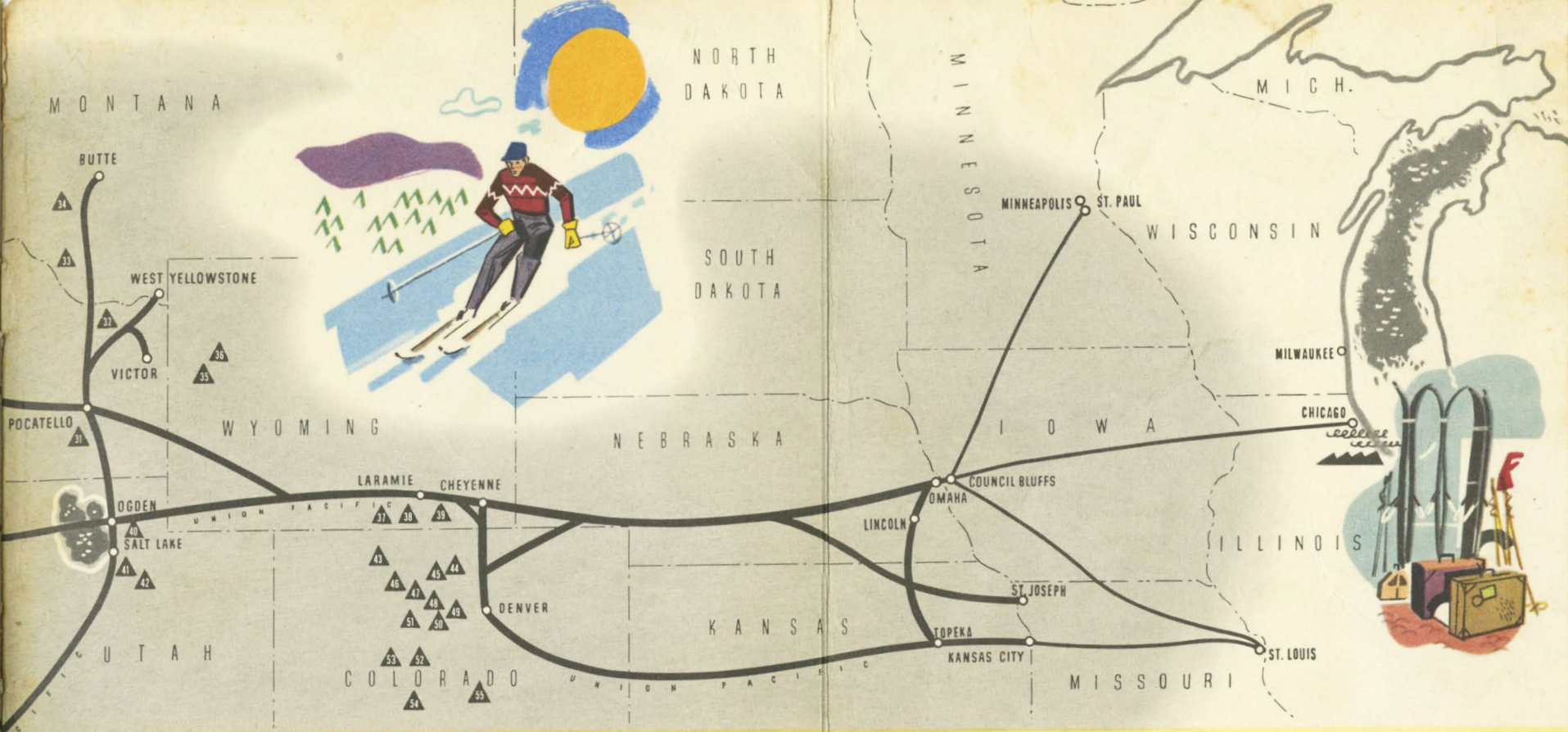
Tacoma 2, Wash.....114 S. Ninth St.
Toronto, Ontario.....201 Can. Pac. Bldg.
Tulsa 3, Okla.....823 Kennedy Bldg.

Walla Walla, Wash..First Nat'l Bank Bldg.
Washington 5, D. C....600 Shoreham Bldg.
Winston-Salem 3, N. C...632 Reynolds Bldg.

Yakima, Wash.....Union Pacific Bldg.

UNION PACIFIC RAILROAD





LOCATION OF WINTER SPORTS AREAS SERVED BY THE UNION PACIFIC RAILROAD

(Index to Descriptive Stories on Page 46)

WASHINGTON

- 1—Mt. Baker Lodge
- 2—Stevens Pass Area
- 3—Leavenworth Area
- 4—The Milwaukee Road Ski Bowl
- 5—Snoqualmie Summit Inn
- 6—Paradise Lodge
- 7—American River Ski Bowl
- 8—Mount Spokane State Park

OREGON

- 9—Timberline Lodge
- 10—Santiam Pass Winter Sports Area
- 11—Skyliner's Playground
- 12—Crater Lake National Park
- 13—Tollgate Recreational Area
- 14—Anthony Lakes Area

CALIFORNIA

- 15—Mt. Shasta Area
- 16—Donner Trail Area
- 17—Tahoe City Area
- 18—Tahoe-Nevada Area
- 19—Tuolumne County Region
- 20—Yosemite National Park
- 21—Silver Tip Lodge at Fish Camp
- 22—June Lake Area
- 23—Giant Forest Winter Lodge
- 24—Mount Wilson Hotel
- 25—Wrightwood
- 26—Lake Arrowhead

IDAHO

- 27—Magic Mountain Ski Area
- 28—Payette Lakes Area
- 29—Bogus Basin Area

IDAHO (Continued)

- 30—Sun Valley Winter Sports Area
- 31—Alpette Ski Club Area
- 32—Bear Gulch Ski Area

MONTANA

- 33—Elkhorn Springs
- 34—Beef Trail

NEVADA

- 18—Tahoe-Nevada Area

WYOMING

- 35—Jackson Hole Ski Area
- 36—Jackson Hole Lodge
- 37—Barrett Ridge Winter Sports Area
- 38—Snowy Range Winter Sports Area
- Libby Creek Area
- 39—Summit Winter Sports Area

UTAH

- 40—Snow Basin
- 41—Brighton Area
- 42—Alta Area

COLORADO

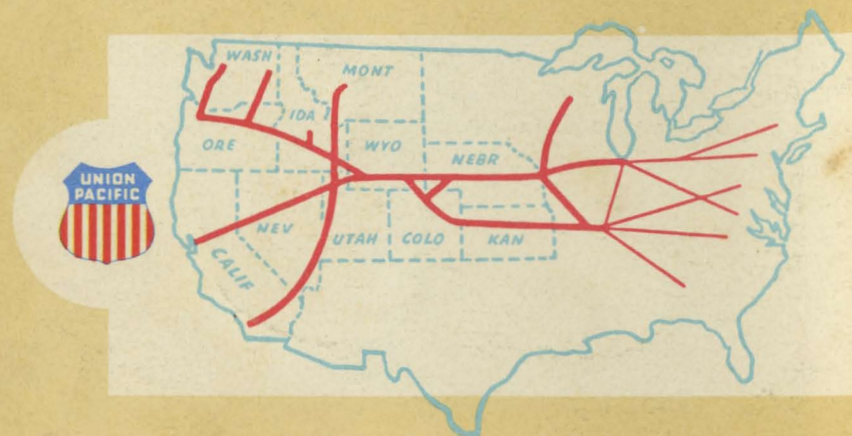
- 43—Steamboat Springs Winter Sports Club
- 44—Estes Park Area
- 45—The Rock Creek Ski Area
- 46—Hot Sulphur Springs Ski Area
- 47—Drowsy Water Ranch
- 48—Winter Park Ski Area
- 49—Berthoud Pass Ski Area
- 50—Loveland Pass Ski Area
- 51—Arapahoe Basin
- 52—Aspen Ski Area
- 53—Glenwood Springs Winter Sports Area
- 54—Salida-Monarch Pass Area
- 55—Pikes Peak Ski Club



WINTER SPORTS MAP

Union Pacific also publishes books, similar to this, on the following regions: California; Colorado; Pacific Northwest-Alaska; Yellowstone-Grand Teton National Parks; Zion-Bryce Canyon-Grand Canyon National Parks; Sun Valley, Idaho, and Dude Ranches. Any of them may be had for the asking.

THE SEASONED TRAVELER GOES BY TRAIN



FOR DEPENDABLE TRANSPORTATION

Be Specific ... Say "UNION PACIFIC"