



*San Francisco*  

---

*Overland*  

---

*Limited*  

---

CHICAGO AND NORTH WESTERN  
UNION PACIFIC  
SOUTHERN PACIFIC





*San Francisco*  
*Overland*  
*Limited*



# *Air-Conditioned Comfort*

WHEN you step aboard the San Francisco Overland Limited, you enter into a realm of perfect weather—regardless of the season of the year. Throughout the entire train, from club car through the dining car, sleeping cars and lounge car, a constant flow of clean, pure air envelops you with temperature and humidity automatically controlled to the exact degree required for comfort—in summer it is mildly cool, in winter mellow warmth awaits. Windows are sealed against dirt and dust, the cars remain immaculate . . . and you arrive at your destination clean, refreshed, invigorated.







*The Lounge Car* • Distinctive in the quiet luxury of true beauty, this car with all its splendid appointments, expresses a friendly hospitality. It is located in the center of the train. Deep, soft and comfortable are its rich divans and easy chairs. A wide selection of current magazines awaits your choice. Late papers are furnished at various points enroute. Inclined to write? Completely equipped writing desks are here for just that purpose.

*San Francisco Overland  
Limited*



# *Your Pullman*

EVERY convenience and comfort possible is present in the beautiful Pullman cars on the San Francisco Overland Limited. At night sound sleep is yours in the spacious comfortable berths with deep coil spring mattresses and fresh snow-white linens. During the day the semi-privacy of the sections, with their individual lights and the deep-cushioned gentle resiliency of the adjustable seats and head-rests will contribute much to your pleasant repose. Wish a pillow—a foot-rest? Just ring for the porter. Portable tables, too, for writing or card games.







Guests on the San Francisco Overland Limited enjoy the facilities of the luxurious new lounge car described on the preceding page. We hope you make frequent use of them.

*San Francisco Overland  
Limited*

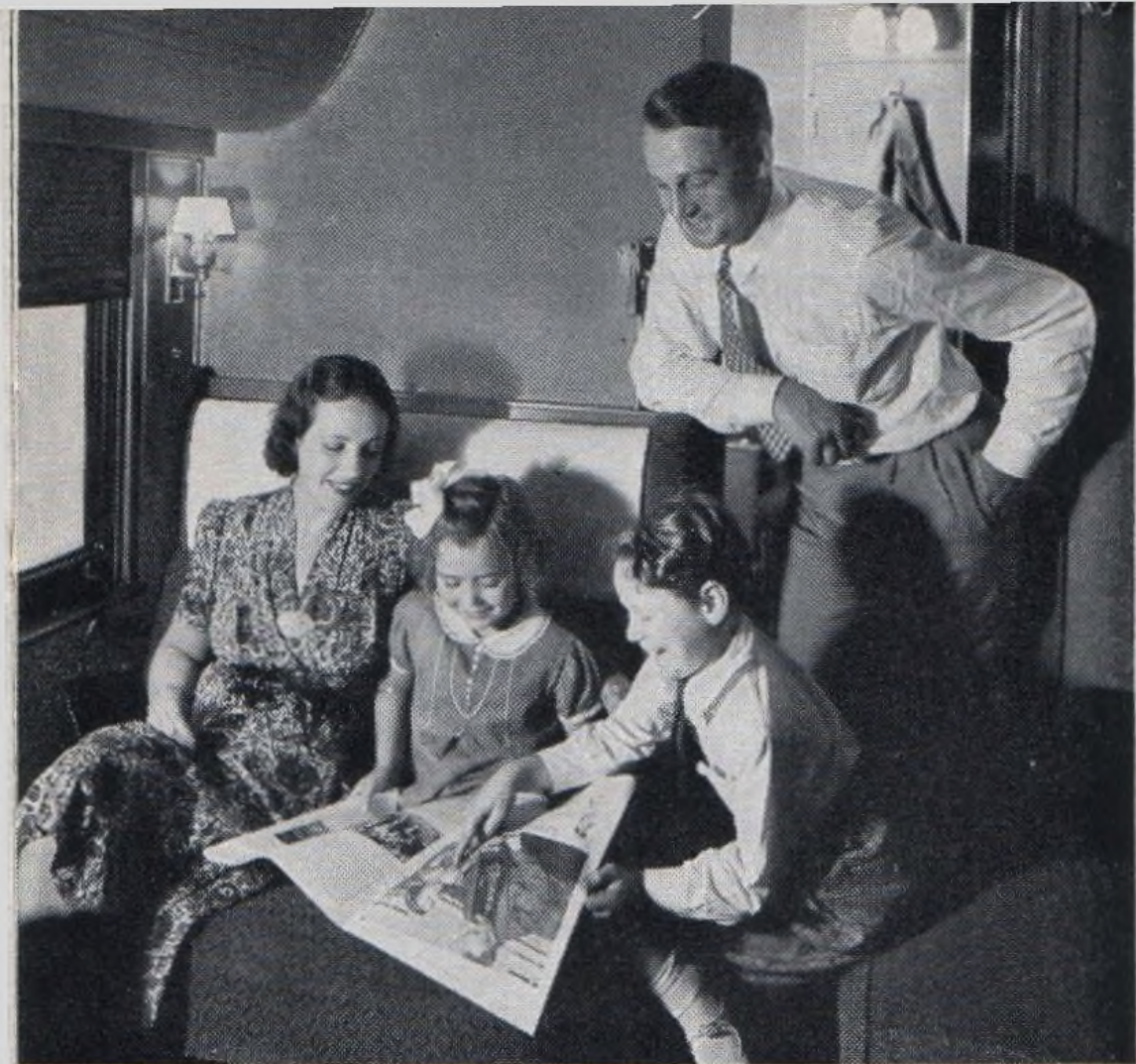


# The Rooms

COMMODIOUS . . . charming in decoration . . . are the drawing-rooms, compartments and bedrooms of this unusual train. In them you will find seclusion if you wish it . . . still at the touch of a button there is the swift response of efficient service. A table for writing or bridge; pillows to recline upon; telegraph blanks; refreshments; just ring and *they are yours*. Every convenience awaits you, even to having meals served in your rooms . . . and the temperature, itself, may be adjusted to your own idea of comfort.







It is a pleasure to have the children along when aboard the San Francisco Overland Limited. Whether you occupy semi-private sections, compartment or drawing-room, the comforts and conveniences; the friendly spirit and the desire to be of aid which characterizes the train personnel, make traveling with children a carefree joy.

*San Francisco Overland  
Limited*



# San Francisco Ocean

## BARBER SHOP

### *Men*

Hair Cut . . . . .	\$ .50
Shave . . . . .	.25
Beard Trimmed . . . . .	.35
Hair Singe. . . . .	.25
Facial Massage . . . . .	.50
Facial Massage (Boncilla) . . . . .	1.00
Plain Shampoo . . . . .	.50
Shampoo, Egg, Oil or Tonic. . . . .	.75
Hair Tonics . . . . .	.25
Bath . . . . .	.50

### *Women*

Hair Bob . . . . .	\$ .75
Hair Bob—Trim . . . . .	.50
Neck Clip . . . . .	.25
Plain Shampoo . . . . .	1.00
Shampoo, Egg, Oil or Tonic. . . . .	1.25
Hair Tonics . . . . .	.25
Bath . . . . .	.50

In the club car, you'll find all the services and conveniences listed on these pages. Bath facilities are in the club car. This car is in the forward end of the train.





# Overland Limited

## VALET SERVICE

Trousers (pressing) .....	\$ .35	Woman's skirt ..	\$ .75
Vest .....	.25	Woman's coat ..	1.00
Coat .....	.65	Woman's one-piece dress .....	1.00
Suit or Overcoat ..	1.00	Woman's Suit ..	1.25

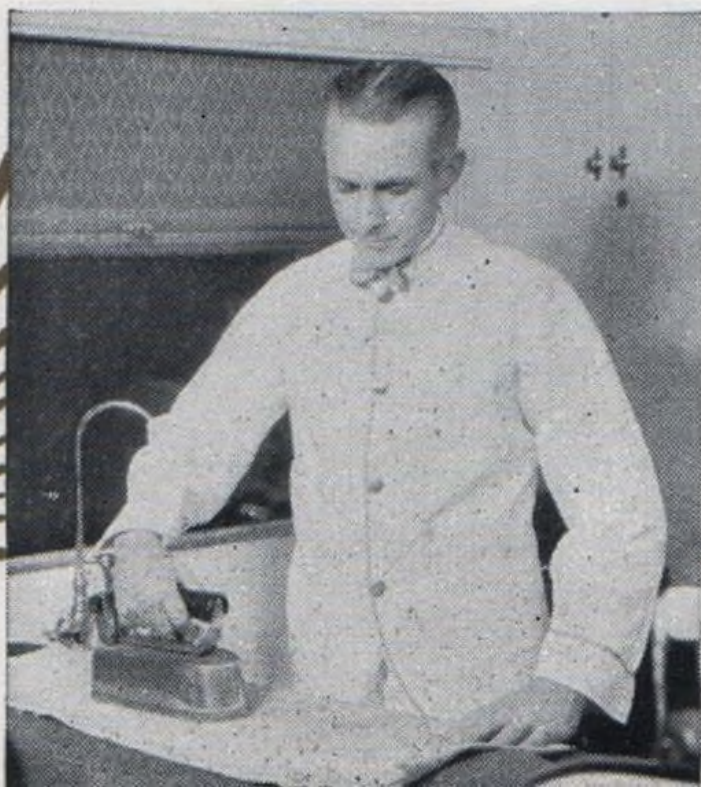
The following Toilet Articles may be purchased from club car porter:

Chewing gum ....	\$.05	Playing cards ....	\$.50
Collar buttons (front or back), each ..	.25	Safety razor (5 blades) .....	.25
Diced mints .....	.05	Razor blades (10) ..	.50
Venus or Kotex ...	.10	Shaving cream ...	.25
Pepsodent (antiseptic) ..	.25	Shoe laces (pair) ..	.10
MI-31 (antiseptic solution) .....	.15	Tooth paste .....	.40
Pocket comb .....	.25	Tooth brush .....	.40
		Aspirin .....	.20

Aspirin will not be sold in Iowa or in any State prohibiting by law, or which prohibits sale except by registered or licensed druggists.

In addition to the above the following items may be obtained from the barber:

Witch hazel .....	\$.15	Styptic stick .....	\$.10
New Skin .....	.15		



Valet service from 6:30 in the morning to midnight. The porter of the sleeping car will arrange for this service.



# The Club Car

THE rendezvous of San Francisco Overland Limited patrons . . . who find in the comfort and subdued luxury of the club car opportunity to lounge—exchange viewpoints — play cards. *Smoke up* if you wish . . . modern air-conditioning whisks away the smoke . . . the atmosphere always remains crystal clear. Refreshing beverages? The buffet is at hand, and a skilled attendant will serve you as you recline in the deeply upholstered easy chairs—the soft divans. Radio—selected magazines—late newspapers—market reports—are present. Good fellowship rules here . . . and “it’s always fair weather.”

The club car is in the forward end of the train.







*Refreshments* • Sparkling drinks between meals are always welcome. Just give your orders to the porter. They will be executed deftly, quickly, courteously. Champagnes, wines, liquors and beer are on sale in states where such sale is not prohibited by law.

*San Francisco Overland  
Limited*



# The Dining Car

“MEALS that appeal” is a significant slogan—long associated with Overland Route dining cars. It means choice foods—properly prepared by expert chefs who have everything at their command to create epicurean dishes. The immaculate linen, the quietness, the deft, efficient service, the stimulating effect of air-conditioning, provide a *perfect* setting for the complete enjoyment of these *perfect* meals.

In addition to *a la carte* service, club breakfasts, select luncheons, light luncheon suggestions and select dinners are featured.







Meals in the diner are among the most delightful interludes of train travel. This is particularly true on the San Francisco Overland Limited as the dining cars run through between Chicago and San Francisco without change.

Special service is gladly arranged for those who may be on restricted diet.

*San Francisco Overland  
Limited*



# *Registered Nurse— Stewardess Service*

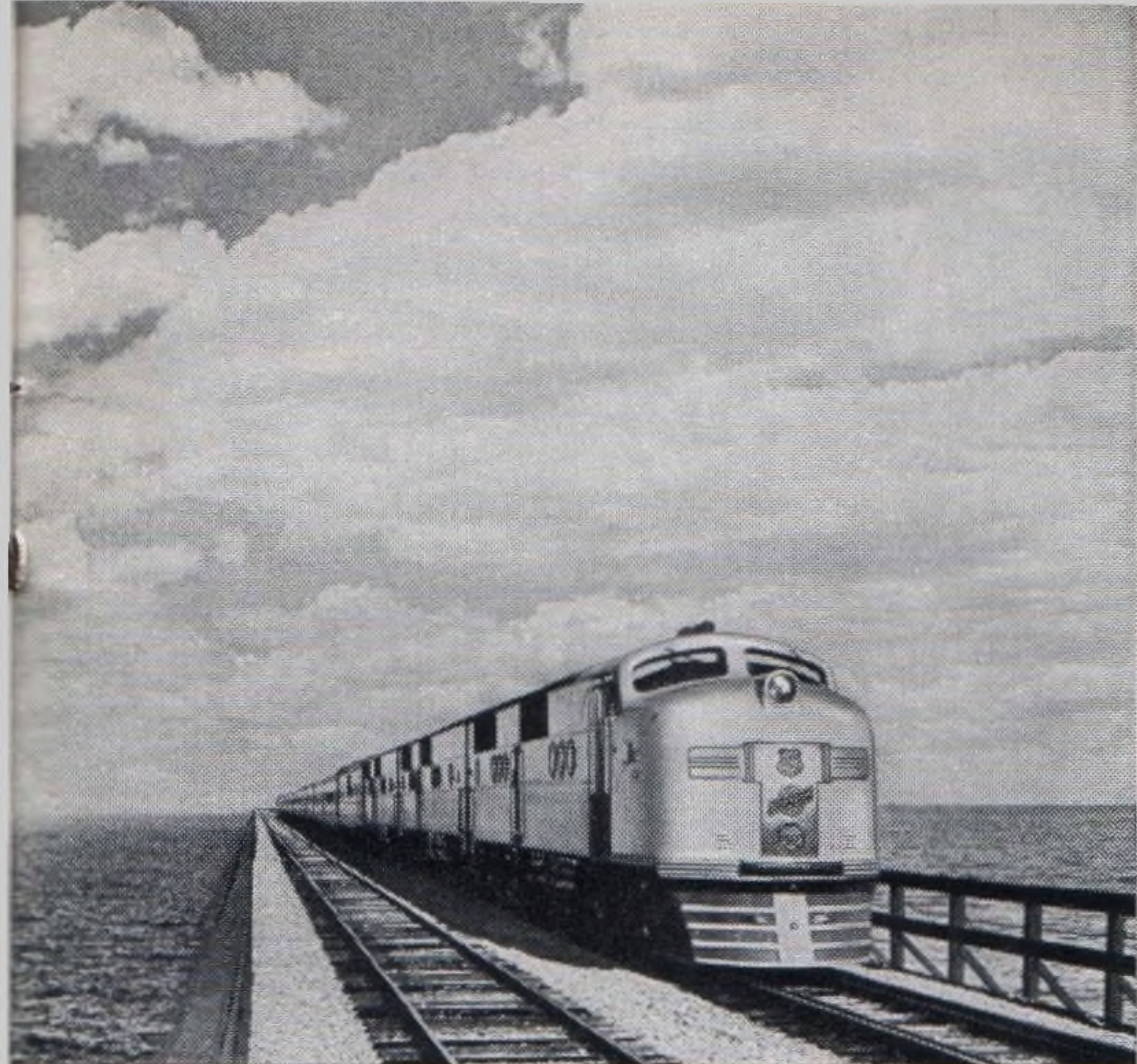
THIS helpful service is one of the many reasons why travelers prefer to go via the Overland Route.

All these Registered Nurse-Stewardesses are graduates of leading hospitals. It is their duty to look after the welfare of all the passengers.

Elderly people, traveling alone, and mothers with children are particularly appreciative of this service.







*The Streamliner*

## *City of San Francisco*

FAST 39 $\frac{3}{4}$ -hour service between Chicago and San Francisco. The finest of modern travel accommodations including spacious Pullmans, diner-lounge, and attractive comfortable coaches. Registered Nurse-Stewardess service. Five "sailings" each way, each month. Extra fare train.



# *The Forty Niner*

BEAUTIFUL all-Pullman steampowered train of streamlined design. Finely appointed observation-lounge and dining car. Registered Nurse-Stewardess service. Fast schedule cuts ten hours from regular steam train running time between Chicago and San Francisco. Five departures each way, each month. Extra fare train.

*The tastefully appointed dining car on The Forty Niner*





