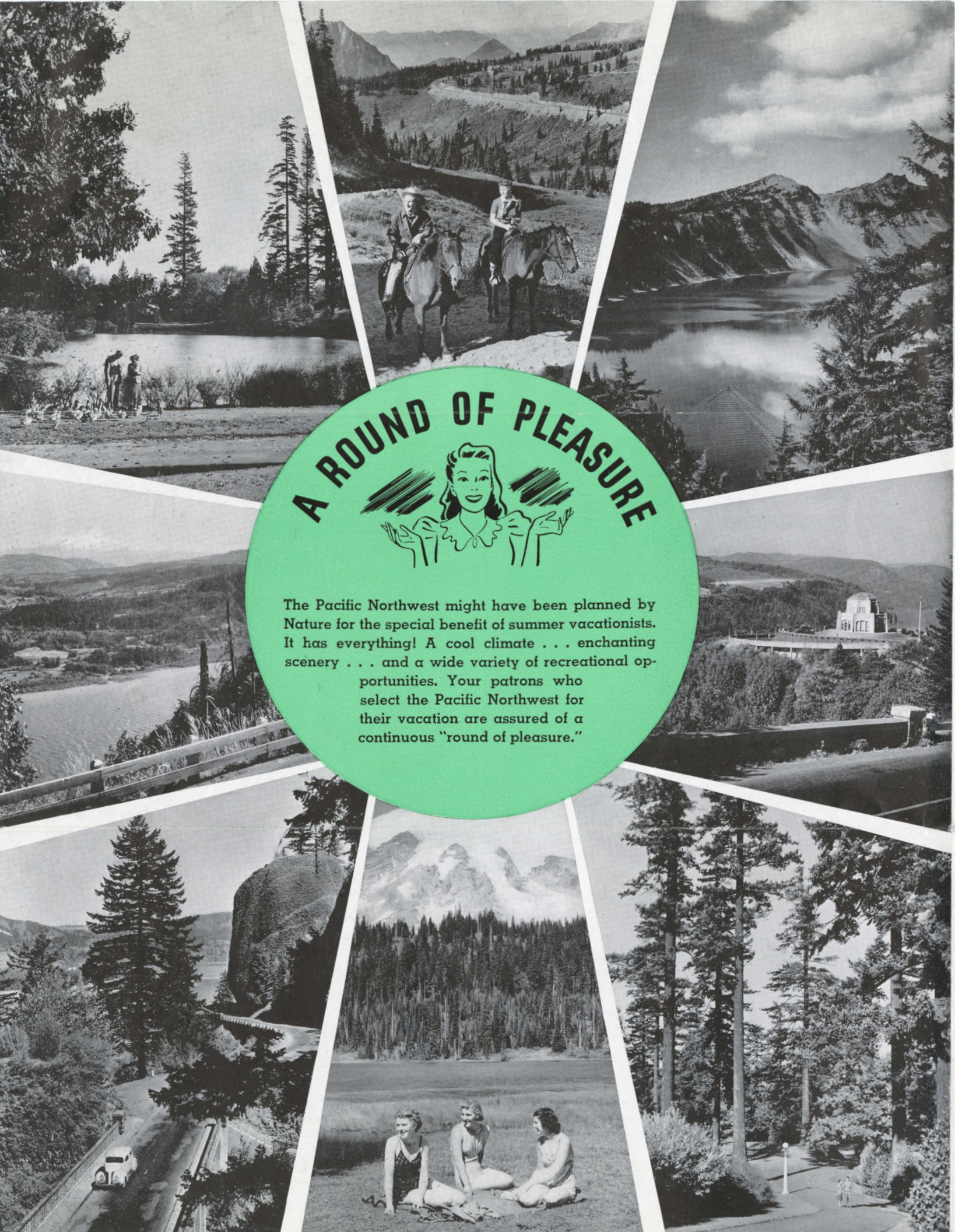


*Delightful Days...*



*in the* **PACIFIC NORTHWEST**





# A ROUND OF PLEASURE



The Pacific Northwest might have been planned by Nature for the special benefit of summer vacationists. It has everything! A cool climate . . . enchanting scenery . . . and a wide variety of recreational opportunities. Your patrons who select the Pacific Northwest for their vacation are assured of a continuous "round of pleasure."



# SPLENDID TRAIN SERVICE

Union Pacific trains, operating between Chicago and Portland, follow the beautiful Columbia River Gorge for a distance of 200 miles—a "plus" scenic treat. A variety of service is available.

## *The Streamliner* CITY OF PORTLAND

Only 39¾ hours between Chicago and Portland on this time-saving Streamliner which provides Standard Pullmans with open and closed sections . . . reclining-seat Coaches and an attractive Diner-Lounge Car which features moderately priced buffet meals for Coach passengers. Five departures each month from each terminal. Leaves Chicago 6:15 p.m., arrives Portland 8:00 a.m., second morning. No extra fare.

## *The Portland Rose* [ THE CHALLENGER ]

Daily service between Chicago and Portland. Standard Pullmans with sections, compartments and bedrooms. Also carries Challenger Sleeping Cars and Coaches. Complete Dining Car service including low-cost meals for Challenger passengers. Fully equipped Lounge Car. Registered Nurse-Stewardess service. The Portland Rose leaves Chicago 10:25 p.m., arrives Portland 7:20 a.m., third morning. The Challenger leaves Chicago 10:20 p.m., arrives Portland 7:20 a.m., third morning. No extra fare.

## *The Pacific Limited*

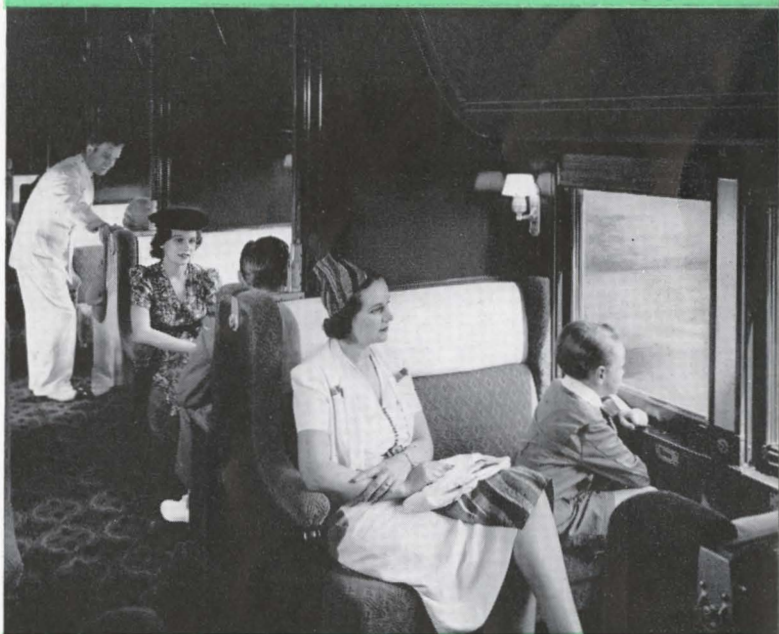
Daily service between Chicago and Portland. Carries Standard and Tourist Sleeping Cars, modern Coaches, Club Lounge Car. Offers moderately priced Dining Car meals. The Pacific Limited is a favorite with many travelers en route to or from the Pacific Northwest due to the fact that it passes through the most scenic part of the Northwest region during daylight hours.

Leaves Chicago 11:35 a.m., arrives Portland 8:55 p.m., third evening. No extra fare.

Suggest "Union Pacific" to travelers en route to or from the Pacific Northwest.



Daytime hours pass pleasantly in the attractive lounge on the "City of Portland".



Up-to-date Pullmans on the Portland Rose provide day and night comfort.



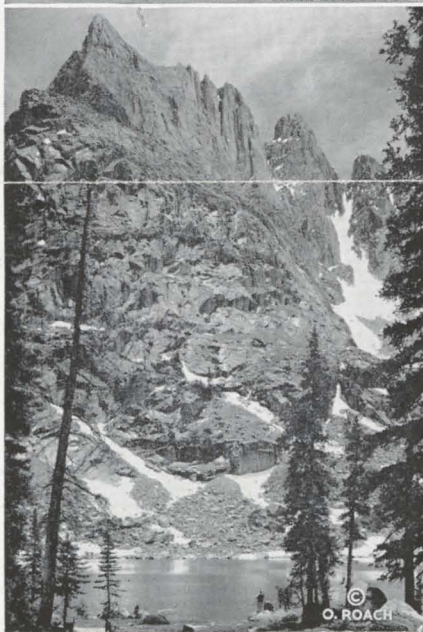
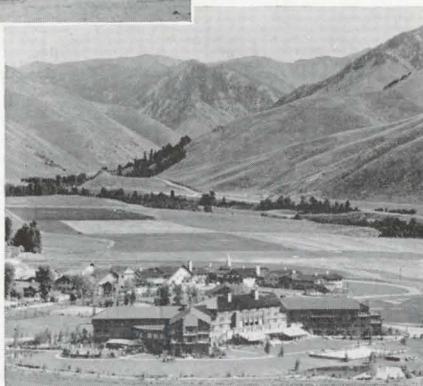
Coaches on all Union Pacific through trains are air-conditioned and of modern type.



# OTHER ATTRACTIONS

*Enroute to or from the*

# PACIFIC NORTHWEST



## YELLOWSTONE NATIONAL PARK

The ever-popular summer playground. Union Pacific trains go direct to the West Yellowstone entrance where visitors board comfortable motor busses for the moderately-priced tour of the Park.

## SUN VALLEY, IDAHO

Famous year 'round sports center in the heart of the Sawtooth Mountain range. Summer attractions include skating on an outdoor artificial ice-rink, golf, riding, tennis, swimming and other sports. Variety of guest accommodations. Rates as low as \$3 per day, per person.

## COLORADO MOUNTAIN PARKS

Cool summer climate in a region of scenic beauty with towering mountain peaks, sparkling lakes and all sorts of outdoor recreations. A delightful and worthwhile "stop over" for travelers en route to or from the Pacific Northwest, and Union Pacific service makes it convenient in either direction.

C. J. COLLINS  
Passenger Traffic Manager  
Omaha, Nebraska

W. S. BASINGER  
General Passenger Traffic Manager  
Omaha, Nebraska

*The Progressive*  
**UNION PACIFIC RAILROAD**