



Streamliner "City of Los Angeles" · One of the Union Pacific Fleet

The Progressive

UNION



PACIFIC

Railroad

SERVES ALL

THE WEST

1940

JANUARY

1940

SUN

MON

TUES

WED

THUR

FRI

SAT

.	1	2	3	4	5	6
7	8	9	10	11	12	13
14	15	16	17	18	19	20
21	22	23	24	25	26	27
28	29	30	31	.	.	.



1939

DECEMBER

1939

1940

FEBRUARY

1940

S	M	T	W	T	F	S	S	M	T	W	T	F	S
					1	2			1	2	3	4	5
3	4	5	6	7	8	9	4	5	6	7	8	9	10
10	11	12	13	14	15	16	11	12	13	14	15	16	17
17	18	19	20	21	22	23	18	19	20	21	22	23	24
²⁴ / ₃₁	25	26	27	28	29	30	25	26	27	28	29		

LITHO. IN U. S. A.

R O A D

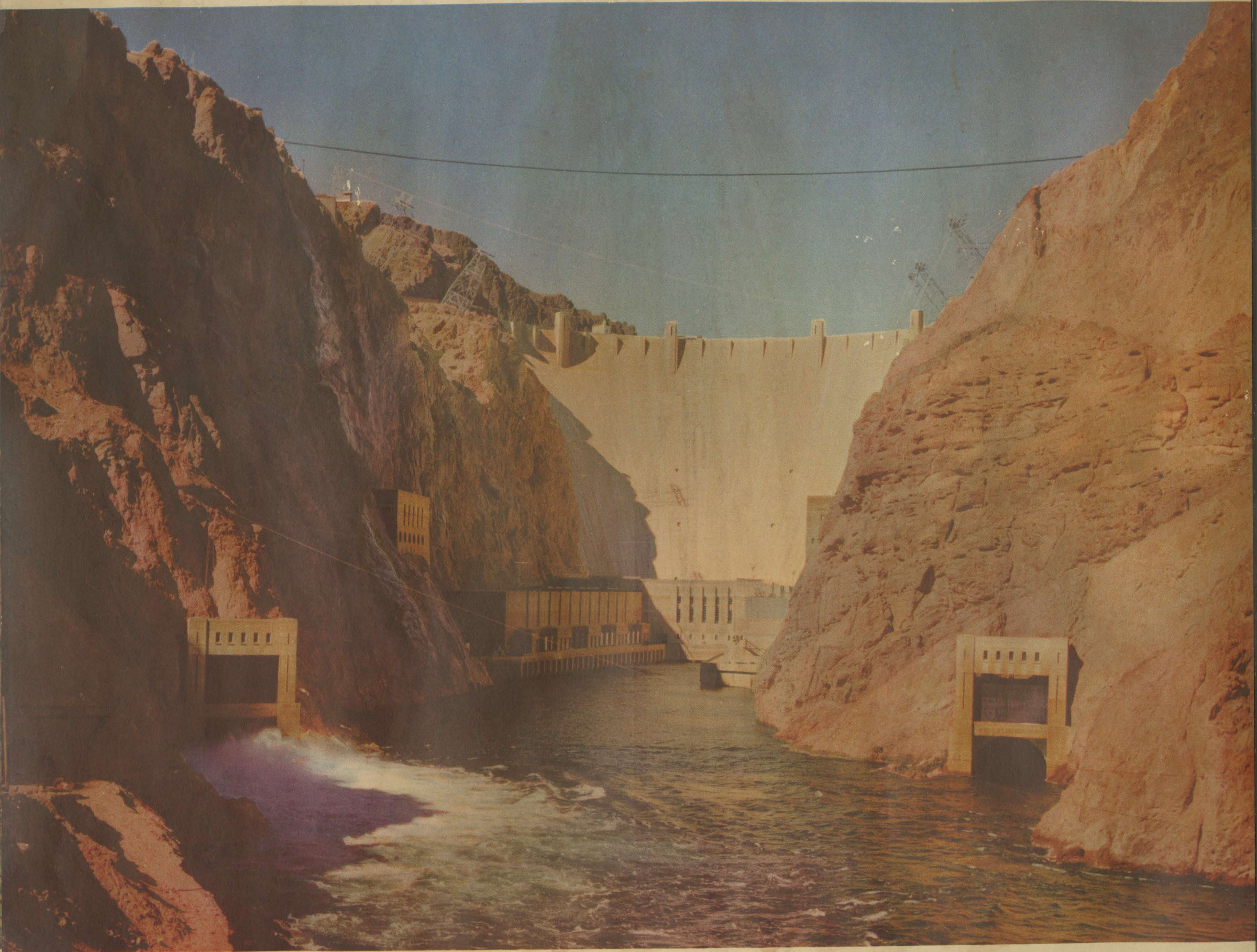
O F

T H E

Streamliners

A N D

Challengers



Boulder Dam · A Short Side-trip En route Southern California

The Progressive **UNION PACIFIC**  **PACIFIC** Railroad
SERVES ALL THE WEST

1940

FEBRUARY

1940

SUN	MON	TUES	WED	THUR	FRI	SAT
.	.	.	.	1	2	3
4	5	6	7	8	9	10
11	12	13	14	15	16	17
18	19	20	21	22	23	24
25	26	27	28	29	.	.



1940

JANUARY

1940

1940

MARCH

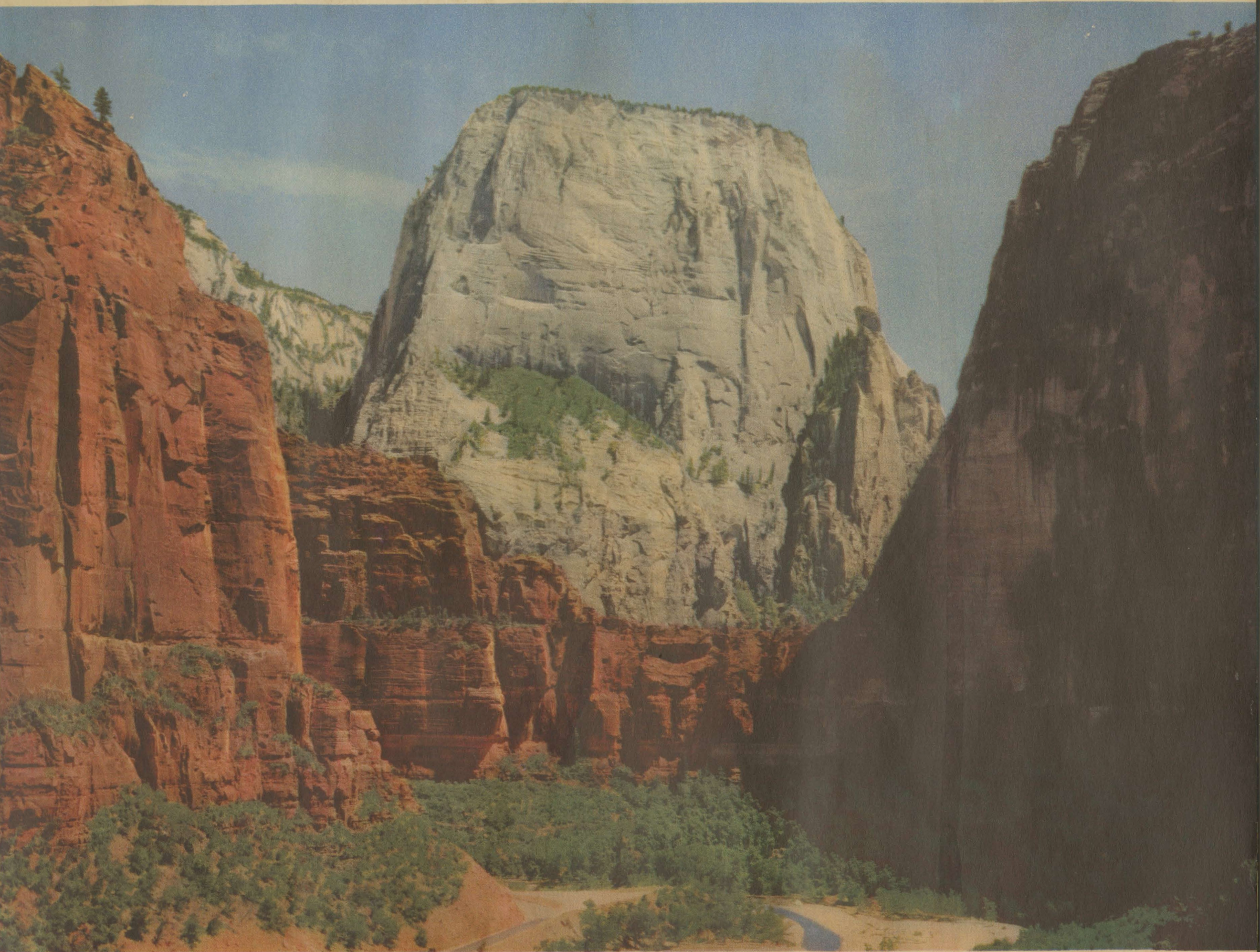
1940

S	M	T	W	T	F	S
.	1	2	3	4	5	6
7	8	9	10	11	12	13
14	15	16	17	18	19	20
21	22	23	24	25	26	27
28	29	30	31	.	.	.

S	M	T	W	T	F	S
.	1	2
3	4	5	6	7	8	9
10	11	12	13	14	15	16
17	18	19	20	21	22	23
24/31	25	26	27	28	29	30

LITHO. IN U. S. A.

R O A D O F T H E Streamliners A N D Challengers



Majestic Great White Throne · Zion National Park, Utah

The Progressive

UNION



PACIFIC

Railroad

SERVES ALL

THE WEST

1940

MARCH

1940

SUN

MON

TUES

WED

THUR

FRI

SAT

.

.

.

.

.

1

2

3

4

5

6

7

8

9

10

11

12

13

14

15

16

17

18

19

20

21

22

23

24/31

25

26

27

28

29

30



1940

FEBRUARY

1940

1940

APRIL

1940

S

M

T

W

T

F

S

S

M

T

W

T

F

S

1

2

3

1

2

3

4

5

6

4

5

6

7

8

9

10

7

8

9

10

11

12

13

11

12

13

14

15

16

17

14

15

16

17

18

19

20

18

19

20

21

22

23

24

21

22

23

24

25

26

27

25

26

27

28

29

28

29

30

LITHO. IN U. S. A.

R O A D

O F

T H E

Streamliners

A N D

Challengers



Spectacular Old Faithful Geyser • Yellowstone National Park

The Progressive **UNION PACIFIC** *Railroad*
 SERVES ALL THE WEST



1940

APRIL

1940

SUN	MON	TUES	WED	THUR	FRI	SAT
.	1	2	3	4	5	6
7	8	9	10	11	12	13
14	15	16	17	18	19	20
21	22	23	24	25	26	27
28	29	30



1940

MARCH

1940

1940

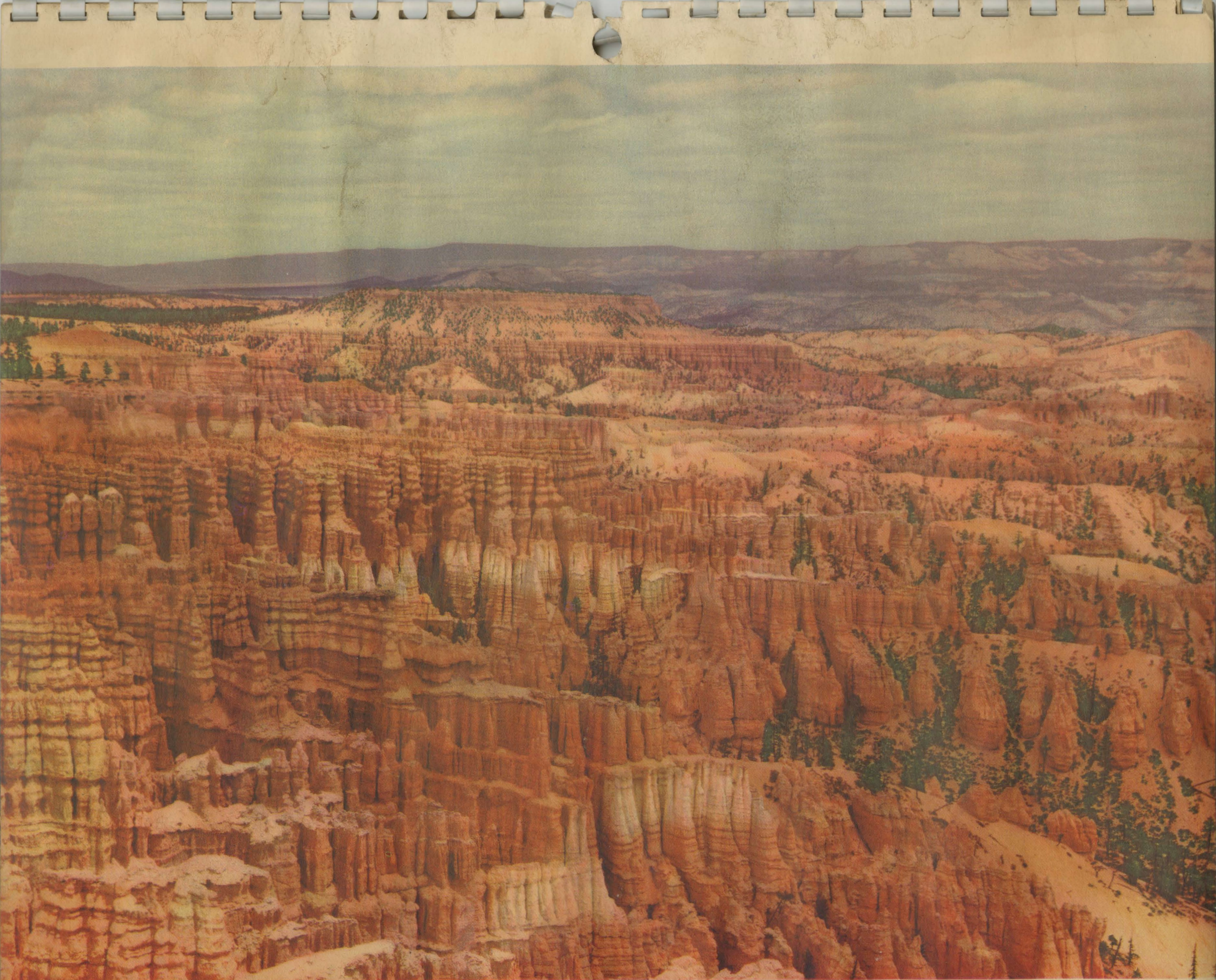
MAY

1940

S	M	T	W	T	F	S	S	M	T	W	T	F	S
.	1	2	.	.	.	1	2	3	4
3	4	5	6	7	8	9	5	6	7	8	9	10	11
10	11	12	13	14	15	16	12	13	14	15	16	17	18
17	18	19	20	21	22	23	19	20	21	22	23	24	25
24/31	25	26	27	28	29	30	26	27	28	29	30	31	.

R O A D O F T H E *Streamliners* A N D *Challengers*

LITHO. IN U. S. A.



Fantastic Formations in Bryce Canyon National Park, Utah

The Progressive **UNION PACIFIC**  **PACIFIC** *Railroad*
SERVES ALL THE WEST

1940

MAY

1940

SUN	MON	TUES	WED	THUR	FRI	SAT
.	.	.	1	2	3	4
5	6	7	8	9	10	11
12	13	14	15	16	17	18
19	20	21	22	23	24	25
26	27	28	29	30	31	.



1940

APRIL

1940

1940

JUNE

1940

S	M	T	W	T	F	S	S	M	T	W	T	F	S
	1	2	3	4	5	6							1
7	8	9	10	11	12	13	2	3	4	5	6	7	8
14	15	16	17	18	19	20	9	10	11	12	13	14	15
21	22	23	24	25	26	27	16	17	18	19	20	21	22
28	29	30					23/30	24	25	26	27	28	29

LITHO. IN U. S. A.



Sun Valley, Idaho · The Ideal Summer Vacationland

The Progressive

UNION



PACIFIC

Railroad

SERVES ALL

THE WEST

1940

JUNE

1940

SUN

MON

TUES

WED

THUR

FRI

SAT

.

.

.

.

.

.

1

2

3

4

5

6

7

8

9

10

11

12

13

14

15

16

17

18

19

20

21

22

23/30

24

25

26

27

28

29



1940

MAY

1940

1940

JULY

1940

S

M

T

W

T

F

S

S

M

T

W

T

F

S

1

2

3

4

5

6

7

8

9

10

11

7

8

9

10

11

12

13

12

13

14

15

16

17

18

14

15

16

17

18

19

20

19

20

21

22

23

24

25

21

22

23

24

25

26

27

26

27

28

29

30

31

28

29

30

31

LITHO. IN U. S. A.

R O A D

O F

T H E

Streamliners

A N D

Challengers



Grand Canyon National Park, Arizona · From the North Rim

The Progressive

UNION



PACIFIC

Railroad

SERVES ALL

THE WEST

1940

JULY

1940

SUN

MON

TUES

WED

THUR

FRI

SAT

.	1	2	3	4	5	6
7	8	9	10	11	12	13
14	15	16	17	18	19	20
21	22	23	24	25	26	27
28	29	30	31	.	.	.



1940

JUNE

1940

1940

AUGUST

1940

S	M	T	W	T	F	S	S	M	T	W	T	F	S
						1					1	2	3
2	3	4	5	6	7	8	4	5	6	7	8	9	10
9	10	11	12	13	14	15	11	12	13	14	15	16	17
16	17	18	19	20	21	22	18	19	20	21	22	23	24
23/30	24	25	26	27	28	29	25	26	27	28	29	30	31

LITHO. IN U. S. A.

R O A D O F T H E *Streamliners* A N D *Challengers*



Jackson Lake and the Tetons · Grand Teton National Park, Wyoming

The Progressive **UNION PACIFIC**  **PACIFIC** *Railroad*
SERVES ALL THE WEST

1940

AUGUST

1940

SUN	MON	TUES	WED	THUR	FRI	SAT
.	.	.	.	1	2	3
4	5	6	7	8	9	10
11	12	13	14	15	16	17
18	19	20	21	22	23	24
25	26	27	28	29	30	31



1940

JULY

1940

1940

SEPTEMBER

1940

S	M	T	W	T	F	S	S	M	T	W	T	F	S
	1	2	3	4	5	6	1	2	3	4	5	6	7
7	8	9	10	11	12	13	8	9	10	11	12	13	14
14	15	16	17	18	19	20	15	16	17	18	19	20	21
21	22	23	24	25	26	27	22	23	24	25	26	27	28
28	29	30	31				29	30					

LITHO. IN U. S. A.

R O A D O F T H E *Streamliners* A N D *Challengers*



Dream Lake and Hallett Peak · Rocky Mountain National Park, Colorado

The Progressive **UNION PACIFIC** *Railroad*
 SERVES ALL THE WEST



1940

SEPTEMBER

1940

SUN	MON	TUES	WED	THUR	FRI	SAT
1	2	3	4	5	6	7
8	9	10	11	12	13	14
15	16	17	18	19	20	21
22	23	24	25	26	27	28
29	30



1940

S	M	T	W	T	F	S
				1	2	3
4	5	6	7	8	9	10
11	12	13	14	15	16	17
18	19	20	21	22	23	24
25	26	27	28	29	30	31

1940

S	M	T	W	T	F	S
		1	2	3	4	5
6	7	8	9	10	11	12
13	14	15	16	17	18	19
20	21	22	23	24	25	26
27	28	29	30	31		

LITHO. IN U. S. A.

R O A D O F T H E *Streamliners* A N D *Challengers*



Columbia River Gorge · En route to or from the Pacific Northwest

The Progressive

UNION



PACIFIC

Railroad

SERVES ALL

THE WEST

1940

OCTOBER

1940

SUN

MON

TUES

WED

THUR

FRI

SAT

.	.	1	2	3	4	5
6	7	8	9	10	11	12
13	14	15	16	17	18	19
20	21	22	23	24	25	26
27	28	29	30	31	.	.



1940

SEPTEMBER

1940

1940

NOVEMBER

1940

S	M	T	W	T	F	S	S	M	T	W	T	F	S
1	2	3	4	5	6	7						1	2
8	9	10	11	12	13	14	3	4	5	6	7	8	9
15	16	17	18	19	20	21	10	11	12	13	14	15	16
22	23	24	25	26	27	28	17	18	19	20	21	22	23
29	30						24	25	26	27	28	29	30

LITHO. IN U. S. A.

R O A D O F T H E *Streamliners* A N D *Challengers*



Historic Santa Barbara Mission · Santa Barbara, California

The Progressive **UNION PACIFIC**  **PACIFIC** Railroad
SERVES ALL THE WEST

1940 **NOVEMBER** 1940

SUN	MON	TUES	WED	THUR	FRI	SAT
.	1	2
3	4	5	6	7	8	9
10	11	12	13	14	15	16
17	18	19	20	21	22	23
24	25	26	27	28	29	30



1940

S	M	T	W	T	F	S
		1	2	3	4	5
6	7	8	9	10	11	12
13	14	15	16	17	18	19
20	21	22	23	24	25	26
27	28	29	30	31		

1940

S	M	T	W	T	F	S
1	2	3	4	5	6	7
8	9	10	11	12	13	14
15	16	17	18	19	20	21
22	23	24	25	26	27	28
29	30	31				

LITHO. IN U. S. A.



Winter at Sun Valley, Idaho · Famous Year 'round Sports Center

The Progressive

UNION



PACIFIC

Railroad

SERVES ALL

THE WEST

1940

DECEMBER

1940

SUN

MON

TUES

WED

THUR

FRI

SAT

1

2

3

4

5

6

7

8

9

10

11

12

13

14

15

16

17

18

19

20

21

22

23

24

25

26

27

28

29

30

31

.

.

.

.



1940

NOVEMBER

1940

1941

JANUARY

1941

S

M

T

W

T

F

S

S

M

T

W

T

F

S

1

2

1

2

3

4

3

4

5

6

7

8

9

5

6

7

8

9

10

11

10

11

12

13

14

15

16

12

13

14

15

16

17

18

17

18

19

20

21

22

23

19

20

21

22

23

24

25

24

25

26

27

28

29

30

26

27

28

29

30

31

EPSEN LITHO, U. S. A.

PLASTIC BINDING
U. S. PAT. NO. 1970285
OMAHA

R O A D O F T H E *Streamliners* A N D *Challengers*