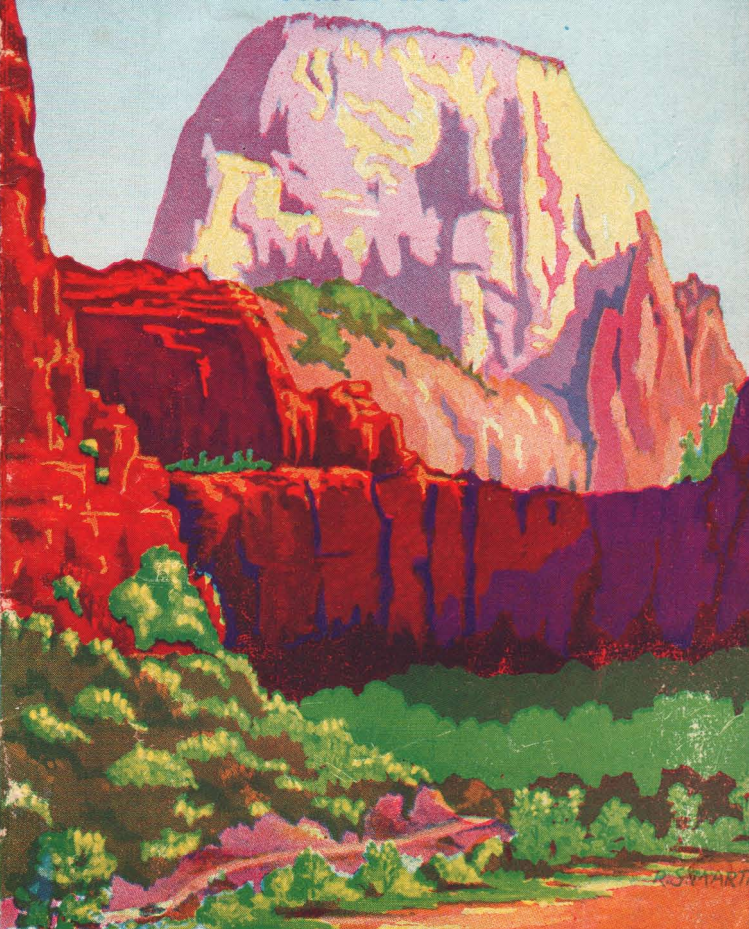


VACATION TOURS TO
FLAMING CANYONS

ZION-BRYCE GRAND CANYON

NATIONAL PARKS

Season 1939



ALL EXPENSE
ESCORTED TOURS

DEPARTMENT OF TOURS

UNION PACIFIC

NATIONAL PARK VACATIONS

For You This Year

BREAK away this summer. Go where you can find a complete change of scenery . . . where you can do just what you want to do . . . when you want to do it. Visit the National Parks.

Make your plans early. And when you plan, let us help you to realize your dream of a perfect vacation—carefree, inexpensive. We know how. It's our business . . . has been for thirty-nine years.

We have learned to anticipate your every travel desire and need. Our wealth of experience . . . our thorough knowledge of the places of greatest interest . . . our complete travel service . . . all is yours for the asking.

In the following pages is a brief outline of vacation tours to four of our most beautiful and awe-inspiring National Parks . . . each tour designed to give you the most for the least.

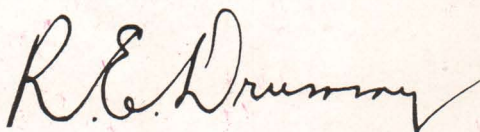
Everything is arranged for you in advance. You travel by train . . . in supreme comfort . . . directly, quickly . . . adding days to your time in the regions you have chosen to see. You are assured of ample accommodations, in special Pullmans on our finest trains and in all hotels and lodges . . . with excellent food, and plenty of it, wherever you go.

You know exactly what it will cost before you leave. A courteous and competent escort accompanies you all the way to relieve you of every detail. Not a worry . . . not a care . . . nothing to do but enjoy every minute.

Don't let your vacation trip be a lonesome one. There's nothing more pitiful than to be alone on a vacation trip—trying to enjoy yourself by yourself because you don't happen to know anyone who wants to go where you want to go.

And there is no need of it! Join a Union Pacific National Park Tour and be assured of pleasant company all the way—congenial fellow travelers with whom you will spend many happy hours.

Let Us Make Your Reservations Now!

A large, stylized handwritten signature in dark ink, reading "R.E. Drummond". The signature is fluid and cursive, with a prominent checkmark at the end.

General Passenger Agent.

ZION, BRYCE and GRAND CANYON

National Park Tours

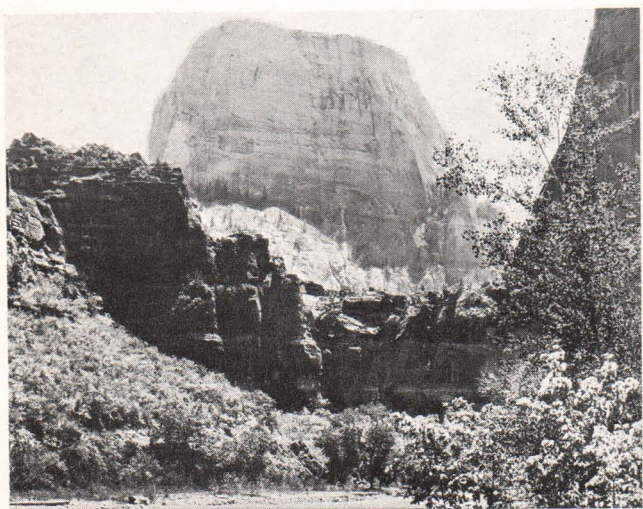
ZION with its great gorge—colorful, sheer, sublime. Grand Canyon—*“the shrine of beauty lovers from all the world.”* Bryce Canyon—*“the sensation of the National Parks.”* All along the miles of highways connecting these three outstanding National Parks with each other—and connecting all with Union Pacific’s rail terminus and gateway at Cedar City—is an endless panorama of charm . . . scenic feature after scenic feature.

Utah’s Dixie . . . Mt. Carmel highway with a mile-long tunnel . . . prismatic plains . . . the Kaibab Forest . . . Red Canyon . . . Lava fields . . . Cedar Breaks . . . Cedar Canyon—incomparable thrills such as these will make every moment of this memorable trip one of pure delight.

SATURDAY: Escorted All-Expense Tours leave Los Angeles from the Los Angeles Union Passenger Terminal on the *Union Pacific* at 8:00 P.M., May 27, June 10 and 24, July 8 and 22, August 5 and 19, and September 2.

SUNDAY: Enroute through Nevada and Utah. Early risers will see the famous Rainbow Canyon.

On arrival at Lund, 12:17 P.M., special automobiles are waiting, and after a short ride, Cedar City is reached. Luncheon is served at El Escalante Hotel. A short time after, we are on our way to travel the celestial circle. Our fondest scenic dreams will be realized as we see *“The Land of Flaming Canyons.”*



Great White Throne—Zion National Park



Colorful and Spectacular Cedar Breaks

Leaving Cedar City for Cedar Breaks National Monument, you start almost immediately into remarkable canyon country. The road winds ever upward, through deep and spectacular Cedar Canyon which you enter shortly after leaving Cedar City. Almost without warning, the road stops at the very brink of Cedar Breaks, a stupendous chasm, miles across and over half a mile deep. Aside from the massive grandeur, Cedar Breaks presents a sublimity of coloring and erosion that is enthralling. The guide will point out its many gigantic formations, such as the walls of Jericho, Point Supreme and the Gates of the Forbidden City.

Then on to Bryce, following the Sevier River we soon enter Red Canyon, much like Bryce but on a smaller scale, it gives you a slight idea of what is to come . . . then the "*Gem of all Southern Utah*"—Bryce Canyon, the beautiful . . . like a glimpse of another world. No stretch of imagination is needed to see statues, minarets, fortresses and many other objects. Entertainment and dancing enliven the evening at the lodge.

MONDAY: With the coming of dawn you will find yourself again on the brink of the great prismatic abyss, watching the rising sun paint in reds, pinks, purples and whites, every pinnacle, mosque, castle and cathedral. The day is left open to follow the canyon's trails into the mysterious depths. A strangely different impression of the towering parapets and spires is unfolded at every turn of the trail; from above they seemed dainty and fragile; now they appear gigantic. You will agree that Bryce Canyon National Park is an amazing, entrancing spectacle of matchless beauty.

TUESDAY: Leave Bryce Lodge at 1:00 P.M., for Grand Canyon. The ride is delightful through a region of varied

UNION PACIFIC RAILROAD

scenic interest. A short stop at Kanab, at which point you are 89 miles from the nearest railroad. Just after you leave Kanab you cross the state line into Arizona. You are soon deep in the Kaibab National Forest, with its abundance of deer and its shy, white tailed squirrels. Grand Canyon Lodge . . . an enthusiastic welcome . . . then a dash to the rim for the first breath-taking view of Nature's most stupendous spectacle. In the evening, a great log fire . . . entertainment . . . music for the dance.

WEDNESDAY: You have a full day at Grand Canyon to enjoy its sublime beauty. Explore, on-foot or horseback, the many trails which lead from the Lodge into the forest or Canyon. Grand Canyon from Cape Royal, with its Angel's Window, presents an entirely different view than at other points along the rim. A mile below and miles away is the rushing, raging Colorado River. Beyond the opposite rim you can see for miles out across the desert—the *Painted Desert*. Point Imperial is likewise fascinatingly different. See them both on a thrilling motor trip over the new Cape Royal Highway at a small additional expense.

THURSDAY: Leave Grand Canyon Lodge at 8:00 A.M. After having witnessed another magnificent sunrise we board motor cars and enter the Kaibab Forest enroute to Zion. On across the Prismatic Plains, winding through unusual canyons, far different in contour and color than anything you have seen on the entire tour, you drive through a short tunnel which prepares you for the treat that lies just ahead. After several spectacular gorges, the buses suddenly enter a great tunnel, the Mt. Carmel Highway, cut for more than a mile through solid rock. Opening from it are six windows looking out upon views of the highest grandeur. About 1:00 P.M. the buses arrive at Zion Lodge, nestling at the very base of the gigantic wall.



Grand Canyon—From Union Pacific Lodge

UNION PACIFIC RAILROAD

The afternoon is open for hikes and horseback riding. Inspect more closely the Watchman, Three Wise Men, Temple of the Sun, East and West Temples, Three Patriarchs, Altar of Sacrifice and Angel's Landing. Entertainment and dancing in the evening.

FRIDAY: At 9:00 A.M. we board the buses for a ride and a short hike that will reward us handsomely . . . In the Temple of Sinawava we get our finest view of the Great White Throne. You look up, nearly 2,500 feet to the summit of Zion's most striking mountain, its steep sides shading from red to buff to white. A short hike along a good trail and the canyon walls shrink to a mere few feet in width.

At 1:00 P.M. we bid goodbye to Zion and our 65-mile ride to Cedar City takes us through quaint Mormon villages and Utah's Dixie. At Lund we board the train for Southern California. Dinner in the dining car.

SATURDAY: After breakfast in the dining car you arrive at the Los Angeles Union Passenger Terminal at 8:30 A.M. All good things must come to an end, and you say goodbye to the many new friends with whom you have traveled these past seven days.

Never have you enjoyed a vacation trip which was so free from care and travel details! No precious holiday hours were wasted in securing tickets and reservations before starting from one point to the next. A well-planned itinerary gave you the best of each place visited.

What an easy, delightful, restful way to travel! What wondrous sights you saw! And what an interesting story you will have to tell your friends.

Passengers traveling to the east are invited to join one of our escorted tours from Chicago for the trip from Bryce Canyon to Salt Lake City and eastern cities. Any Union Pacific Travel Expert will be glad to make arrangements.



Amazing Formations in Bryce Canyon National Park

TOURS TO ZION-BRYCE

Grand Canyon

LEAVE LOS ANGELES ON FOLLOWING DATES:

Z-1 Saturday.....	May 27	Z-5 Saturday.....	July 22
Z-2 Saturday.....	June 10	Z-6 Saturday.....	Aug. 5
Z-3 Saturday.....	June 24	Z-7 Saturday.....	Aug. 19
Z-4 Saturday.....	July 8	Z-8 Saturday.....	Sept. 2

DETAILED SCHEDULES

Lv. Los Angeles	Sat.	8:00 P.M.
Breakfast in dining car. Luncheon Hotel El Escalante.		
Ar. Lund, Utah (Union Pacific)	Sun.	12:17 P.M.
Lv. Lund, Utah (Motor Coach)	Sun.	12:20 P.M.
Ar. Cedar City	Sun.	1:20 P.M.
Lv. Cedar City	Sun.	2:00 P.M.
Through Cedar Canyon.		
Ar. Cedar Breaks	Sun.	4:00 P.M.
Ample time to view this colorful amphitheatre.		
Ar. Bryce Canyon Lodge	Sun.	6:30 P.M.
Monday—Exploring Bryce Canyon from the brink and along the trails.		
Lv. Bryce Canyon Lodge	Tue.	1:00 P.M.
Across Prismatic Plains. Through Kaibab Forest.		
Ar. Grand Canyon Lodge	Tue.	6:00 P.M.
Wednesday, exploring Canyon, hiking, horseback riding and auto trip to Cape Royal available.		
Lv. Grand Canyon Lodge	Thu.	8:00 A.M.
Through Kaibab Forest, Painted Desert in distance.		
Ar. Zion Lodge	Thu.	1:00 P.M.
Auto tour to the Temple of Sinawava and the Narrows. Trail trips in Canyon or to the Rim.		
Lv. Zion Lodge	Fri.	1:00 P.M.
Through Utah's Dixie.		
Ar. Cedar City	Fri.	3:00 P.M.
Ar. Lund	Fri.	4:15 P.M.
Lv. Lund	Fri.	4:28 P.M.
Dinner and breakfast in dining car.		
Ar. Los Angeles	Sat.	8:30 A.M.

NOTE—Rates and schedules quoted herein are subject to such change as tariff or operating requirements which cannot be foreseen at time of issuance of this publication may later demand.

COST OF COMPLETE TOUR

FROM LOS ANGELES, RETURNING TO LOS ANGELES
(Corresponding Low Charges from Other Southern California Points)

One person occupying lower berth.....	\$ 97.15
One person occupying upper berth.....	94.95
Two persons occupying lower berth (each).....	92.65
Two persons occupying compartment (each).....	100.75
Three persons occupying compartment (each).....	96.55
Two persons occupying drawing room (each).....	103.90
Three persons occupying drawing room (each).....	98.65
Four persons occupying drawing room (each).....	96.05

These rates include standard sleeping car accommodations for the complete trip; all meals everywhere; automobile tours and standard lodge accommodations for a six-day tour of Zion, Grand Canyon and Bryce Canyon National Parks; also transfer of passengers and baggage. May we suggest that you arrange your vacation dates so you can take advantage of one of these ideal Escorted All-Expense Tours?

YELLOWSTONE NATIONAL PARK

and Salt Lake City Tours

THE longing to visit Yellowstone begins in early childhood and intensifies as the years roll by. People come from all over the world to see Yellowstone and yet many who are comparatively close to this spectacular region of beauty and scenic surprises have not availed themselves of the opportunity of enjoying "*the trip of a lifetime.*"

What could be more restful than a trip to Yellowstone National Park? A complete change in your surroundings will react as the ideal tonic. Imagine being able to see all of Yellowstone—with plenty of time to enjoy its every feature, its every mood—and with the added delight of visiting fascinating Salt Lake City—all in the brief space of one week.

Think of this: Quiet Yellowstone Lake . . . Snow-capped mountains . . . rushing, roaring Yellowstone River tumbling into the Canyon in one great flood of dazzling foam . . . hissing, gushing geysers . . . horseback riding . . . hiking . . . trout fishing . . . colored terraces . . . good roads . . . comfortable automobiles . . . swimming in warm geyser water . . . music . . . dancing . . . entertainment, or great restful hotel or lodge verandas . . . wonderful meals and plenty of the great outdoors in this invigorating mountain air. Travel on the finest trains . . . and it's inexpensive.

Make your vacation perfect. Come with us on a carefree trip—travel with congenial, happy companions.



Old Faithful Geyser—Yellowstone National Park

ESCORTED TOURS TO WONDERLAND



Pulpit Terrace—Yellowstone National Park

ITINERARY

SATURDAY: Escorted All-Expense Tours leave Los Angeles from the Los Angeles Union Passenger Terminal on the *Union Pacific* at 8:00 P.M., June 17, July 1, 15 and 29, August 12 and 26, and September 2.

SUNDAY: Enroute through Nevada and Utah. Early risers will see the famous Rainbow Canyon. Breakfast and luncheon are served in the dining car. Dinner at Hotel Utah, Salt Lake City. Our train leaves Salt Lake City at 8:00 P.M.

MONDAY: Early in the morning you arrive at the attractive Union Pacific-West Yellowstone gateway (the only entrance directly on the Park boundary). The cool, crisp air exhilarates. Something tells you that you are on the threshold of a tremendous scenic adventure. After breakfast, in the handsome new Union Pacific dining lodge, you board automobiles which have been reserved in advance and set forth on a four-day auto tour that will realize most of your dreams.

The morning ride is from West Yellowstone Station to Old Faithful, a distance of twenty-nine miles. You make a wise choice in entering the Park at this Western Entrance because the government road from this point, winding through the Park, brings you to the principal attractions in their proper sequence.

The comfortable motor buses of the Yellowstone Park Transportation Co., which carry you to Old Faithful for your first overnight stop in this weird region, pause en route at Excelsior Geyser, Fountain Paint Pot, Morning Glory Pool, and other interesting formations.

Old Faithful is in the heart of the Upper Geyser Basin, where all the great geysers are located. You can sit on the broad gallery of the Inn and watch Old Faithful play only 200 yards away. During the afternoon the party is taken over the Basin. By nightfall you will agree that this is the "*most weird spot in the Universe.*"

In the evening watch the bears—dance to the strains of a melodious orchestra—or just rest and watch Old Faithful Geyser with a giant searchlight playing on it—truly a fascinating, weird scene.

UNION PACIFIC RAILROAD

TUESDAY: The morning is spent at Old Faithful. Short walks from the hotel discover multi-colored pools and more geysers. After lunch leave at 2:00 P.M.; a 35-mile motor trip takes the party to Lake Hotel, overlooking Yellowstone Lake.

The late afternoon affords time for fishing, boating, hiking, or "*just resting*". After dinner see the bears, big and little, cinnamon and "silvertip," come out of the forest for their twilight meal.

WEDNESDAY: Leave the Lake Hotel at 9:30 A.M., drive twenty miles to the Grand Canyon, visit Artist Point and arrive at the Canyon Hotel at 10:55 A.M. The Grand Canyon is one of the most brilliantly colored spectacles in nature. Words fail you—you catch your breath anew at each view of the Yellowstone Falls in its stupendous setting. Great cataracts tumble into the Canyon. One of the falls drops a greater distance than twice the height of Niagara. In the afternoon a hike or a motor bus trip along the Canyon Rim to Inspiration Point unfolds a wide expanse of color in the Canyon Walls.

THURSDAY: Leave Grand Canyon at 9:45 A.M. Again by bus, you set out for Mammoth Hot Springs by way of Dunraven Pass, visiting Tower Falls and the strangely different Lower Canyon of the Yellowstone. This part of the ride takes you over the Chittenden Road, which is superior, scenically and from an engineering standpoint, to any other road in the Yellowstone region. Bowknot curves, lofty passes, broad vistas, overhanging cliffs, pinnacles, waterfalls, wild animals and wild flowers make up a partial list of the attractions on this route, ending at Mammoth Hot Springs, where luncheon is served.

After luncheon, an auto tour over the terraces . . . Jupiter . . . Hyman . . . Cleopatra . . . the Devil's Kitchen. The latter is a steam-heated cavern, whose depths are safely reached by a stairway. Then on by auto to West Yellowstone. Stop is made en route at Norris Geyser Basin. The late afternoon ride down Madison River Canyon ends your visit to Nature's Great Museum, where she exhibits, as nowhere else, cascades, cataracts, hot spring terraces, geysers, multi-colored mud pots, petrifications, colored canyons and wild animals. Dinner is served in the Union Pacific dining lodge. Pullman cars are



Biscuit Pool—Yellowstone National Park

ESCORTED TOURS TO YELLOWSTONE

conveniently parked and are ready for occupancy immediately after dinner. Leave West Yellowstone at 7:15 P.M.

FRIDAY: Arrive Salt Lake City at 7:00 A.M. Special automobiles are waiting to take you to the Hotel Utah for breakfast; after breakfast visit the Mormon grounds, and again board automobiles for a leisurely sight-seeing tour of the city. This will include the historically famous Mormon places, the broad boulevards, parks, civic centers and a visit to the magnificent state capital building, terminating at the Union Pacific Station, where you board your Pullman, for Los Angeles at 10:00 A.M. Luncheon and dinner in the dining car.

SATURDAY: After breakfast in the dining car you arrive at the Los Angeles Union Passenger Terminal at 8:30 A.M. Reluctantly you leave the train, saying goodbye to the many new friends with whom you have traveled these past seven days.

AT HOME AGAIN

Never have you enjoyed a vacation trip which was so free from care and travel details! No precious holiday hours were wasted in securing tickets and reservations before starting from one point to the next. A well-planned itinerary gave you the best of each place visited.

What an easy, delightful, restful way to travel! What wondrous sights you saw. And what an interesting story you will have to tell your friends.

MISCELLANEOUS INFORMATION

Persons who wish to extend journeys to Colorado and farther east and to enjoy the advantages of our escorted tours through Zion-Bryce-Grand Canyon or Yellowstone, are invited to apply for further information.



WEARING APPAREL: Due to the altitudes enroute, cool weather is experienced. We suggest ordinary summer clothing with a top coat or sweater. Sport clothes are most useful and thick soled shoes are a convenience. Formal attire is not necessary.

BAGGAGE ARRANGEMENTS: Unnecessary baggage is always a nuisance. Most persons agree that a roomy suitcase will hold everything essential for a comfortable trip through the National Parks. The free baggage allowance on the automobiles in the National Parks is 25 pounds (one regular suitcase); and on the railroads, 150 pounds of baggage is carried free. Passengers who may have a trunk or other baggage to be checked, should have their baggage checked at their home station to Cedar City, Utah, or West Yellowstone, where it will be stored free of charge while they are making the park tour.

THE DEPARTMENT OF TOURS assumes no responsibility for baggage, but in event of damage, delay or loss, will do all in its reasonable power to lessen the hardship incurred.

YELLOWSTONE NATIONAL PARK and SALT LAKE CITY TOURS

LEAVE LOS ANGELES ON FOLLOWING DATES:

Y-1 Saturday.....	June 17	Y-4 Saturday.....	July 29
Y-2 Saturday.....	July 1	Y-5 Saturday.....	Aug. 12
Y-3 Saturday.....	July 15	Y-6 Saturday.....	Aug. 26
	Y-7 Saturday.....		Sept. 2

DETAILED SCHEDULES

Lv. Los Angeles	Sat.	8:00 P.M.
Ar. Salt Lake City	Sun.	5:50 P.M.
Breakfast and Luncheon in Dining Car.		
Transfer to Hotel Utah for Dinner.		
Transfer to Station.		
Lv. Salt Lake City	Sun.	8:00 P.M.
Ar. West Yellowstone	Mon.	7:00 A.M.
Breakfast in U.P. Dining Lodge.		
Lv. West Yellowstone (Auto)	Mon.	9:30 A.M.
Ar. Old Faithful Inn	Mon.	11:40 A.M.
Lv. Old Faithful Inn	Tue.	2:00 P.M.
Ar. Yellowstone Lake	Tue.	4:00 P.M.
Lv. Yellowstone Lake	Wed.	9:30 A.M.
Ar. Grand Canyon	Wed.	10:55 A.M.
Lv. Grand Canyon	Thu.	9:45 A.M.
Ar. Mammoth Hot Springs	Thu.	12:45 P.M.
Luncheon and Inspect Terraces.		
Lv. Mammoth Hot Springs	Thu.	2:30 P.M.
Ar. West Yellowstone (Auto)	Thu.	5:05 P.M.
Dinner in U.P. Dining Lodge.		
Lv. West Yellowstone	Thu.	7:15 P.M.
Ar. Salt Lake City	Fri.	7:00 A.M.
Transfer to Hotel Utah for Breakfast.		
Sight-seeing trip in Salt Lake City.		
Lv. Salt Lake City	Fri.	10:00 A.M.
Luncheon and Dinner in Dining Car.		
Ar. Los Angeles Union Passenger		
Terminal	Sat.	8:30 A.M.
Breakfast in Dining Car.		

NOTE—Rates and schedules quoted herein are subject to such changes as tariff or operating requirements, which cannot be foreseen at time of issuance of this publication, may later demand.

COST OF COMPLETE TOUR

FROM LOS ANGELES, RETURNING TO LOS ANGELES
(Correspondingly Low Charges from other Southern California Points.)

One person occupying lower berth.....	\$117.90
One person occupying upper berth.....	113.70
Two persons occupying lower berth (each).....	109.20
Two persons occupying compartment (each).....	125.20
Three persons occupying compartment (each).....	116.97
Two persons occupying drawing room (each).....	130.95
Three persons occupying drawing room (each).....	120.80
Four persons occupying drawing room (each).....	115.73

NOTE—Above rates based on hotels in Yellowstone.

These rates include standard sleeping car accommodations for the complete trip; all meals everywhere; automobile tours and hotel accommodations in Yellowstone National Park; sight-seeing in Salt Lake City, also transfer of passengers and hand baggage.

May we suggest that you arrange your vacation dates so you can take advantage of one of these ideal Escorted All-Expense Tours? Let us make your reservations now.

YELLOWSTONE—ZION—BRYCE GRAND CANYON NATIONAL PARKS — CEDAR BREAKS

On this "YZ" tour, you are offered an incomparable thirteen-day tour to four of the most important and attractive of our National Parks—Yellowstone, Zion, Bryce and Grand Canyon. By means of fast, through trains and special automobile service, all four parks can be visited on this tour which takes only thirteen days from Los Angeles back to Los Angeles. For convenience of schedule, low cost and magnificent scenery, it is unequaled.

TOURS LEAVE LOS ANGELES AS FOLLOWS:

June 17; July 1, 15 and 29; August 12 and 26; September 2.

Lv. Los Angeles	Sat. 8:00 P.M.
Ar. Salt Lake City	Sun. 5:50 P.M.
Dinner Hotel Utah.	
Lv. Salt Lake City	Sun. 8:00 P.M.
Ar. West Yellowstone	Mon. 7:00 A.M.
Breakfast West Yellowstone, Union Pacific Dining Room.	

FOUR-DAY Automobile Tour of Yellowstone National Park

Lv. West Yellowstone	Mon. 9:30 A.M.
Stopping at Fountain Paint Pots and Great Fountain Geyser.	
Ar. Old Faithful	Mon. 11:40 A.M.
Lv. Old Faithful	Tue. 2:00 P.M.
Stopping at Thumb Paint Pots and Fishing Cone.	
Ar. Yellowstone Lake	Tue. 4:00 P.M.
Lv. Yellowstone Lake	Wed. 9:30 A.M.
Ar. Grand Canyon	Wed. 10:55 A.M.
Lv. Grand Canyon	Thu. 9:45 A.M.
Via Dunraven Pass, stopping at Tower Falls.	
Ar. Mammoth Hot Springs	Thu. 12:45 P.M.
Luncheon at Mammoth Hot Springs.	
Auto Tour of the Terraces.	
Lv. Mammoth Hot Springs	Thu. 2:30 P.M.
Stopping at Norris Geyser Basin.	
Ar. West Yellowstone	Thu. 5:05 P.M.
Dinner West Yellowstone, Union Pacific Dining Room.	
Lv. West Yellowstone	Thu. 7:15 P.M.
Ar. Salt Lake City	Fri. 7:00 A.M.
Lv. Salt Lake City	Sat. 1:15 A.M.
(Sleepers ready for occupancy at 9:30 P.M.)	
Breakfast in dining car.	
Ar. Lund	Sat. 6:44 A.M.

SIX-DAY Automobile Tour of Utah- Arizona Scenic Wonderlands

Lv. Lund	Sat. 7:00 A.M.
Ar. Cedar City	Sat. 8:00 A.M.
Lv. Cedar City	Sat. 9:00 A.M.
Through Cedar Canyon.	
Ar. Cedar Breaks	Sat. 11:30 A.M.
Luncheon. Ample time to view this colorful amphitheatre.	
Lv. Cedar Breaks	Sat. 1:15 P.M.
Ar. Bryce Canyon	Sat. 4:00 P.M.
Many trail and auto trips available.	
Lv. Bryce Canyon	Mon. 1:00 P.M.
Stop at Kanab.	

ESCORTED TOURS TO YELLOWSTONE

Ar. Grand Canyon	Mon. 6:00 P.M.
Many trail and auto trips available. Side trip to Cape Royal and Point Imperial included in cost.	
Lv. Grand Canyon	Wed. 8:00 A.M.
Through Kaibab National Forest, home of White Tail Squirrel and Deer. Through Mt. Carmel Tunnel.	
Ar. Zion Canyon	Wed. 1:00 P.M.
Auto trip to Temple of Sinawava and Narrows, Wednesday afternoon. Trails for hiking and horseback trips.	
Lv. Zion Canyon	Thu. 1:00 P.M.
Stopping at Anderson's Ranch.	
Ar. Cedar City	Thu. 2:30 P.M.
Lv. Cedar City	Thu. 3:00 P.M.
Ar. Lund	Thu. 4:00 P.M.
Lv. Lund	Thu. 4:28 P.M.
Ar. Los Angeles	Fri. 8:30 A.M.
Breakfast in Dining Car.	

COST OF COMPLETE TOUR

FROM LOS ANGELES RETURNING TO LOS ANGELES

One person occupying lower berth.....	\$187.60
One person occupying upper berth.....	183.00
Two persons occupying lower berth (each).....	178.10
Two persons occupying compartment (each).....	195.40
Three persons occupying compartment (each).....	186.47
Two persons occupying drawing room (each).....	202.20
Three persons occupying drawing room (each).....	191.00
Four persons occupying drawing room (each).....	185.40

Above rates are for accommodations at the Yellowstone Park Hotels.

Reverse of this tour, going first to the Utah-Arizona Parks, can be arranged; ask any Union Pacific Travel Expert.

Persons who wish to extend their Journeys to Colorado and the east and to enjoy the advantages of our Escorted Tours through Zion-Bryce-Grand Canyon or Yellowstone National Park are invited to apply for further information.



Seal Castle in Bryce Canyon National Park

UNION PACIFIC RAILROAD

TRAVEL THE
TOURWAY TO SCENIC WONDERLANDS

UNION PACIFIC VACATION TRAVEL SERVICE BUREAUS

If you are planning to travel independently or to organize a party, please call on any of our listed vacation travel experts to assist you. A representative will call on you, if you so desire.

EAST LOS ANGELES—Atlantic Ave. and Telegraph Road—
J. J. Walker, Agent.

FRESNO—207-208 Rowell Bldg.—T. F. Brosnahan, General Agent.

GLENDALE—206 N. Brand Blvd.—L. C. Fowler, General Agent.

HOLLYWOOD—6702 Hollywood Blvd.—C. E. Potter, General Agent.

HUNTINGTON PARK—6815 Pacific Blvd.—T. S. Palmer, Passenger Agent.

LOS ANGELES—434 W. Sixth St.—L. M. Brown, Gen'l Agent;
V. J. Schmittroth, Representative, Department of Tours;
451 South Main Street—E. McKenney, Agent;
517 Pacific Electric Bldg., C. P. Ensign, Agent.

LONG BEACH—220 Pine Ave.—Otto Nilsson, General Agent.

MONROVIA—407 S. Myrtle Avenue—W. R. Bennett, Agent.

OAKLAND—436 14th Street—M. S. Swanson, General Agent.

ONTARIO—Union Pacific Station—S. J. Bentley, Agent.

PASADENA—205 W. Colorado St.—C. F. Farmer, Gen'l Agent.

POMONA—U. P. Station—W. Dittmer, Passenger Agent.

REDLANDS—4 Orange Street—R. E. Tuttle, Passenger Agent.

RIVERSIDE—U. P. Station—W. A. Shook, General Agent.

SAN BERNARDINO—Union Station—R. P. Hinze, Agent.

SACRAMENTO—217 Forum Bldg.—F. A. Fox, General Agent.

SAN DIEGO—345 The Plaza—E. H. Hodgins, General Agent.

SAN FRANCISCO—355 Geary St.—H. W. Hicks, Gen'l Agent.

SAN JOSE—206 First National Bank Bldg.—R. M. Ritchey, General Agent.

SANTA MONICA—307 Santa Monica Blvd.—S. C. Frost, General Agent.

SAN PEDRO—808 S. Pacific Ave.—J. V. Connett, Gen'l Agent.

SANTA ANA—305 N. Main St.—A. C. Ritter, General Agent.

WHITTIER—Union Pacific Station—D. F. Shelley, Agent.

R. E. DRUMMY, General Passenger Agent

Union Pacific Bldg., Los Angeles

422 W. 6th Street

DEPARTMENT OF TOURS

434 West Sixth Street

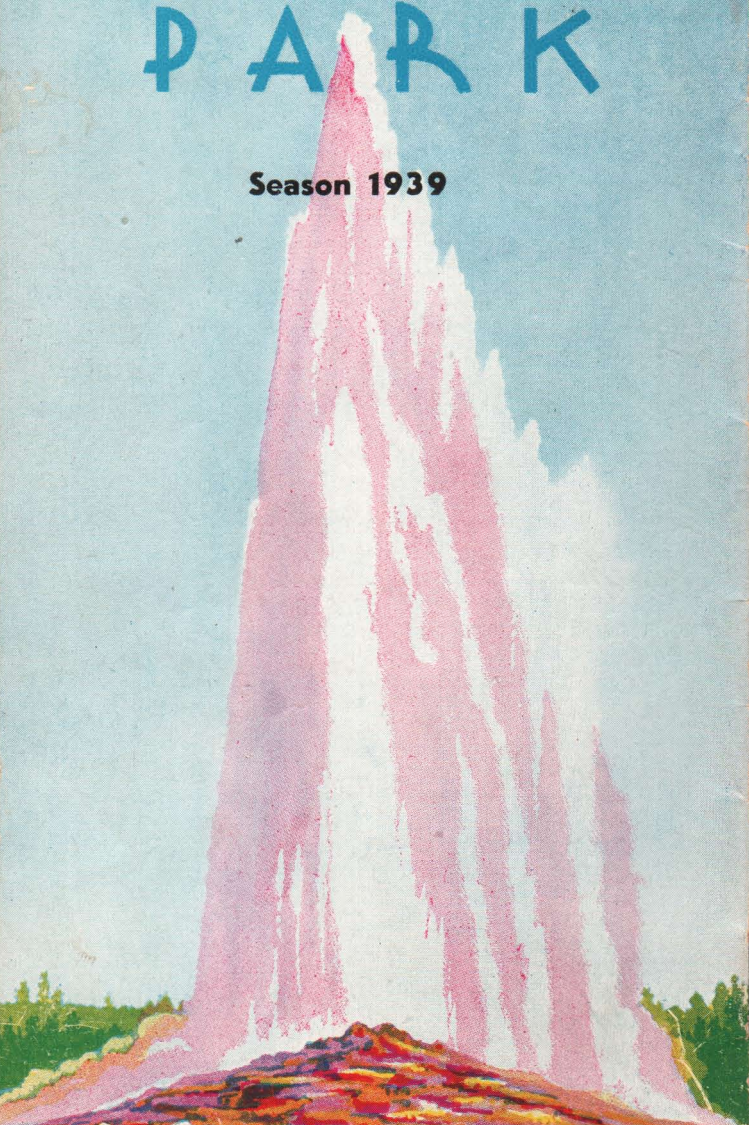
Los Angeles

V. J. SCHMITTROTH

Tour Representative

VACATION TOURS TO
SCENIC WONDERLAND
YELLOWSTONE
P A R K

Season 1939



**ALL EXPENSE
ESCORTED TOURS**

DEPARTMENT OF TOURS

UNION PACIFIC