

A PICTURE STORY OF  
TRAIN TRAVEL

*Today*

A PICTURE STORY OF  
TRAIN TRAVEL

*Today*



VIA *The Progressive*  
**UNION PACIFIC  
RAILROAD**



VIA *The Progressive*  
**UNION PACIFIC  
RAILROAD**



# TRAVEL BY TRAIN

*To* ANYONE who hasn't had an opportunity to travel by train during recent years, the improvements in equipment and many new features introduced for the comfort and convenience of passengers, are almost unbelievable. The old thrill of just boarding a train to go somewhere is multiplied many times by the enjoyment of the journey while en route to your destination.

Air-conditioning undoubtedly has been one of the most important factors in the progress of rail transportation. No longer need you be uncomfortably hot or cold or annoyed by dust and dirt. A pleasant temperature is constantly maintained . . . the air is always fresh . . . windows are sealed tight against all impurities.

Streamlining is another development that has greatly increased the public's interest in train travel. The Union Pacific "City of Salina" was the first Streamlined train built in America. It was followed by six other Union Pacific Streamliners; the "City of Portland," "City of San Francisco," two "City of Los Angeles" Streamliners and the twin Streamliners named "City of Denver."

Safety and economy are other factors that have popularized travel by rail. Your own safety and that of your family and friends deserves serious consideration.

To be able to travel economically as well as comfortably is an objective that was attained with the introduction of the now famous Challenger trains, featuring many unusual travel services and economies. Numerous innovations that make present-day train travel so enjoyable are described in this booklet. For comfort, speed, safety and economy . . . travel by train!



# *Challenger* TYPE COACH



*THE* modern Coach—introduced on the Union Pacific Challenger trains—is a delightful departure from the old type. Chair seats that are attractively and heavily upholstered and adjustable to a reclining position, provide genuine comfort. Pillows are furnished free; there are soft blue night lights and free porter service.



# Challenger TYPE COACH



***YOU'LL*** find plenty of space and modern facilities in the men's washrooms and ladies' dressing rooms on Challenger coaches. Hot water and hand towels are always available. There are white porcelain washbowls, handy mirrors and good lighting. In fact, these accommodations compare favorably with those on Standard Pullmans. No wonder the Challengers have attained national popularity.



# Challenger TYPE COACH

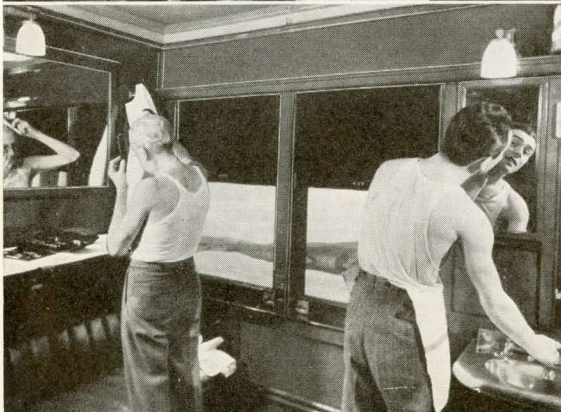


**T**HE large photo on this page shows the Registered Nurse Stewardess attending to her duties on the Challenger Coach. Elderly people, traveling alone, appreciate the thoughtful attention of the Stewardess and her services are of particular value to mothers with small children. If the mother wishes, the Stewardess will prepare the baby's formula or take care of children while mother visits the Diner.





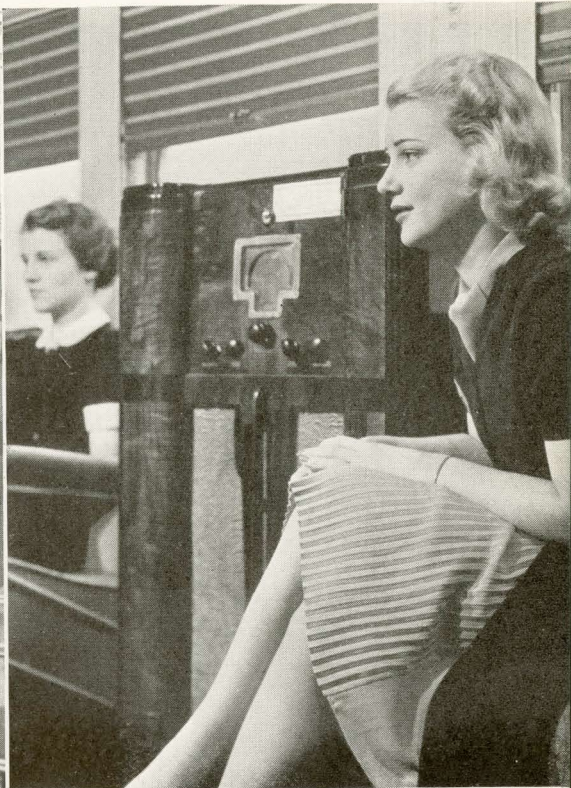
# *Challenger* SLEEPING CARS



**CHALLENGER** Sleeping Cars are modernized de luxe Pullman Tourist Cars specially designed for Challenger service. Berths are equipped with comfortable coiled spring mattresses and during the day the wide Pullman seats provide plenty of space. The dressing rooms are exceptionally clean and commodious. This type of car offers a substantial saving in travel costs.



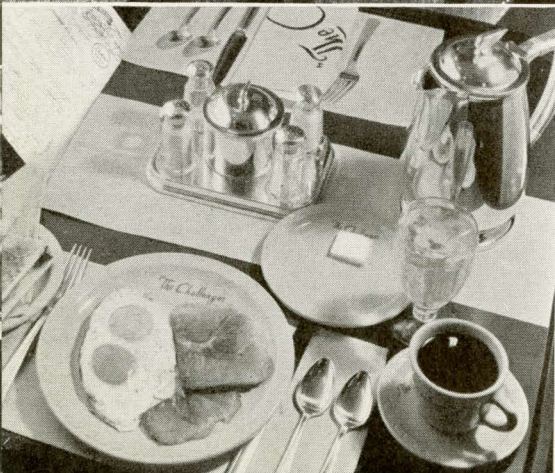
# *Challenger* LOUNGE CAR



*FOR* the added enjoyment of Challenger Sleeping Car occupants there is a smart Lounge Car. Its modernly designed furnishings are pleasing to the eye. A radio helps to pass the time pleasantly, and there are several convenient card sections with tables for a friendly game. Beverage service and light refreshments are available, if desired.



# *Challenger* DINING CAR



***I***N Challenger Dining Cars, generous meals are served at low prices . . . breakfast 25c, luncheon 30c, dinner 35c. The food is of high quality, strictly fresh, and service is excellent. The colorful "coffee-shop" interior adds to the pleasure of dining. "Challenger" meals are just one of the many popular economies of Union Pacific train travel.



# STANDARD DINING CAR



*THE* first call for dinner—or whatever the meal may be—comes none too soon when you can look forward to the pleasure of dining in such delightful surroundings.

Fresh foods of the highest quality are served with a deft touch by courteous waiters. On several trains you will find low-cost "Coffee Shop" meals as well as a more elaborate cuisine.





# S T A N D A R D P U L L M A N



***IN THE*** standard Pullmans of today, air-conditioning, restful berths and heavy carpeting that subdues footsteps make it extremely easy to drift into sound slumber. In daytime, the high headboards give you a feeling of privacy. And if you wish for a pillow, foot-rest or portable table, just ring for the porter. Every possible convenience to make travel a pleasure has been provided.



# S L E E P I N G C A R S



***FOR*** those who like to read in bed, large pillows and a handy reading-light are a great convenience. Drawn curtains insure privacy. There are convenient clothes hangers for suits, dresses or coats. And, thanks to air-conditioning, clothing remains spotless. The net hammock alongside the berth accommodates small articles of wearing apparel, handbag, magazines, etc.





## DRAWING ROOMS / COMPARTMENTS



***DRAWING*** rooms and compartments may be engaged for use individually or ensuite. They provide the same sleeping rooms as open sections . . . upper and lower berth . . . but with dressing room and toilet facilities. Drawing rooms, with davenport-like sofas, offer additional berth space, as shown in picture to left above. A partial view of a compartment appears at the right. Here, indeed, is comfort and privacy at but little additional cost.



# STANDARD PULLMAN REST ROOMS



*THE* ladies' dressing rooms on modern Pullmans were designed and equipped to meet the requirements of feminine guests. Mirrors are exceptionally large. There are boudoir chairs, dressing tables and gleaming porcelain wash-bowls. And with air-conditioning, it is always comfortable.

Frequently-forgotten toilet articles, such as a toothbrush, may be purchased from a supply in the porter's charge.





# C L U B L O U N G E



*THE* old phrase “all the comforts of home” takes on a new meaning when you enter one of the club-lounge cars on a Union Pacific train. You’ll find relaxation in an atmosphere of quiet beauty.

Restful divans and arm-chairs are smartly attractive in upholstery of modern design that harmonizes with the rich carpeting. Current



# C L U B L O U N G E

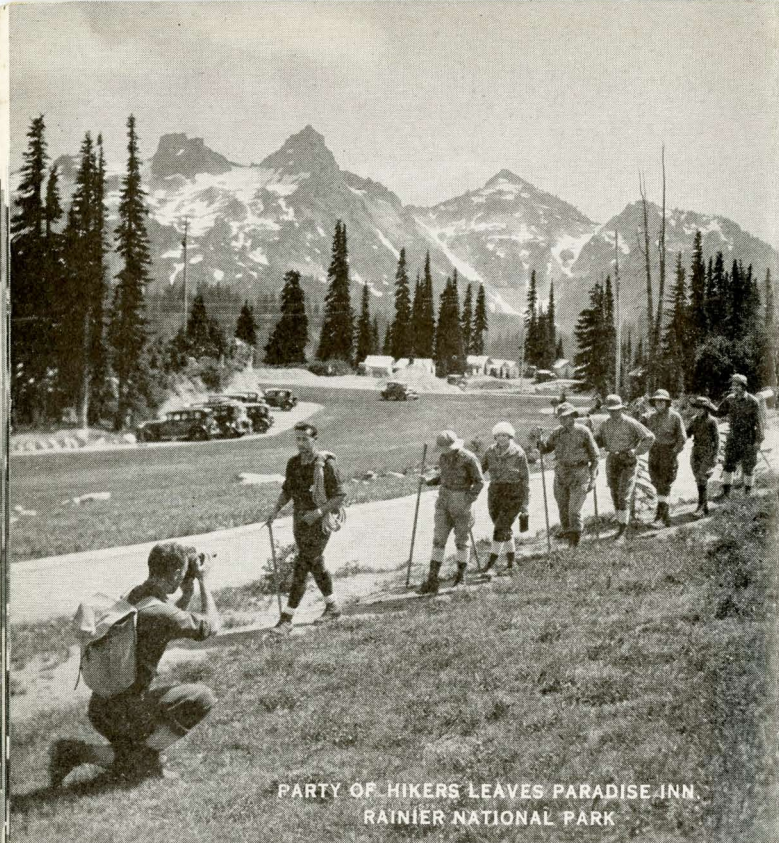


publications are on hand and you can listen to a favorite radio program. On convenient writing desks you will find correspondence paper, envelopes and telegraph blanks.

If someone suggests cards, there's a table in a corner nook and a courteous attendant will serve cooling beverages at reasonable prices. This car is the social center of the train.



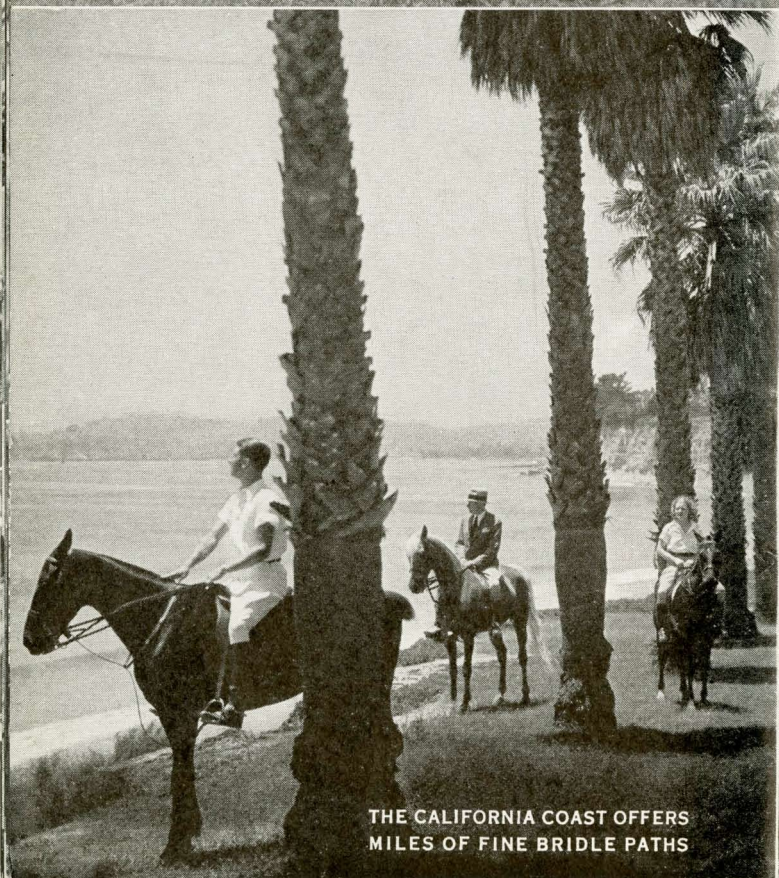




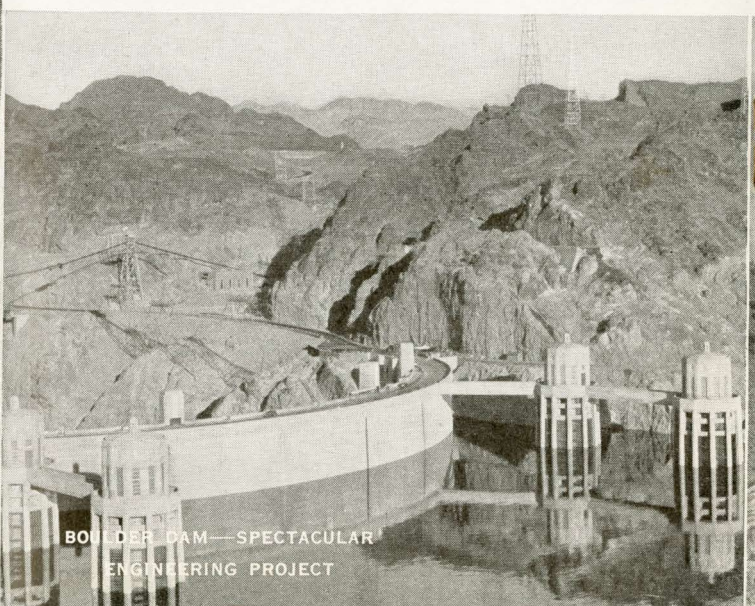
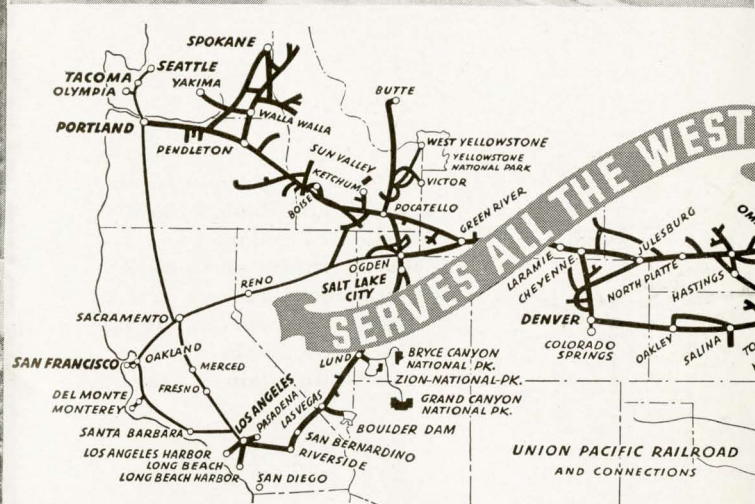
PARTY OF HIKERS LEAVES PARADISE INN,  
RAINIER NATIONAL PARK



SUN VALLEY NESTLES IN THE HEART  
OF THE RUGGED SAWTOOTH



THE CALIFORNIA COAST OFFERS  
MILES OF FINE BRIDLE PATHS



BOULDER DAM—SPECTACULAR  
ENGINEERING PROJECT

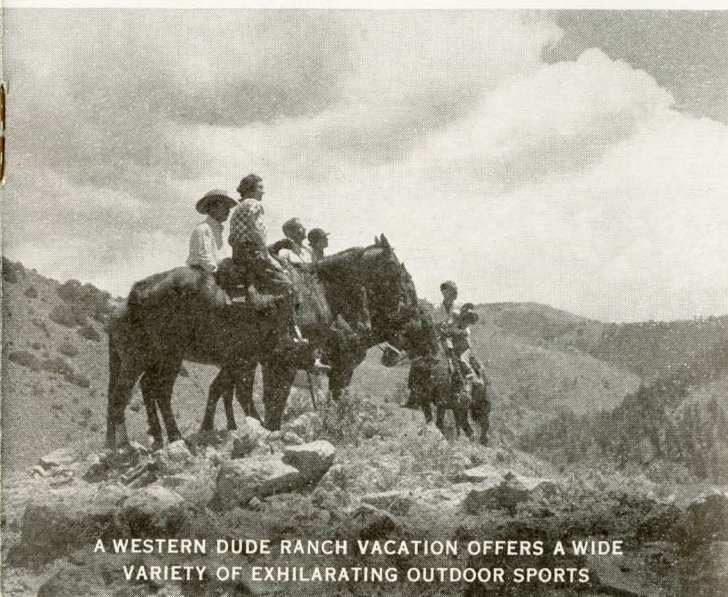




OLD FAITHFUL GEYSER IN YELLOWSTONE NATIONAL PARK NEVER FAILS TO INTRIGUE



*"LIFE* is short and time is fleeting" so plan to see one or more of these western wonderlands on your next summer vacation. Zion, Bryce and Grand Canyon . . . California and Boulder Dam . . . Colorado . . . Yellowstone . . . the Pacific Northwest and Alaska . . . Western Dude Ranches . . . or that brilliant and gay sports center, Sun Valley, Idaho, in the heart of the Sawtooth Mountains. Clean, cool Union Pacific trains will take you to your western vacation land quickly, comfortably, safely and economically.



A WESTERN DUDE RANCH VACATION OFFERS A WIDE VARIETY OF EXHILARATING OUTDOOR SPORTS



CHASM LAKE AND LONGS PEAK COMBINE TO MAKE THIS ONE OF ROCKY MOUNTAIN NATIONAL PARK'S BEAUTY SPOTS



THE CONTOUR AND COLORING OF "THE CATHEDRAL" IN BRYCE CANYON NATIONAL PARK, UTAH, DEFY DESCRIPTION



# CLUB OBSERVATION CAR

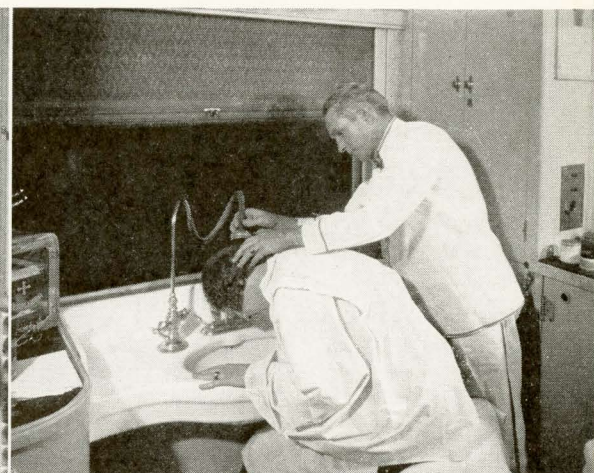


*THE* Club-Observation Car offers Standard Pullman Sleeping Car passengers practically the same comforts and facilities as they will find in the Lounge Observation.

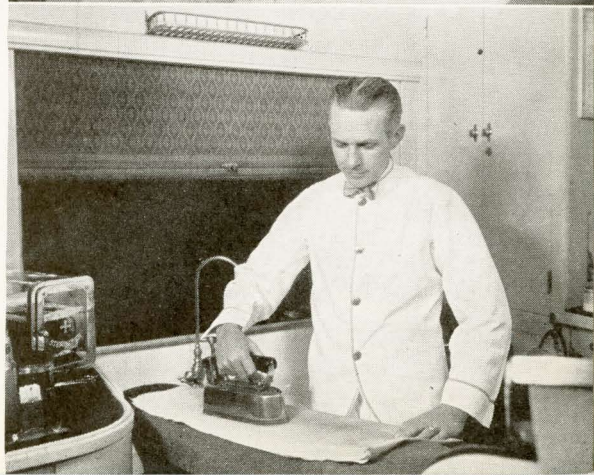
It's a mighty pleasant feeling to sink down in a deep chair as you roll along on a roadbed unexcelled for smoothness. When you travel by train . . . particularly by Union Pacific . . . you arrive at your destination feeling rested and fit.



## BATH / BARBER / VALET SERVICE

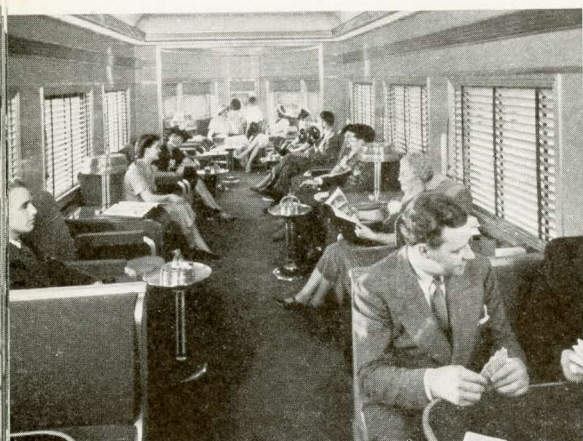


*IN MANY* of the observation-lounge cars on Union Pacific's fine transcontinental trains, you'll find these convenient services. Suppose you say to your reflection in the mirror, "I sure need a hair-cut but won't have time after we arrive" . . . Don't worry about it. You can get that hair-cut or shave . . . yes, even take a shower or tub bath, or have clothes pressed, while speeding toward your destination.





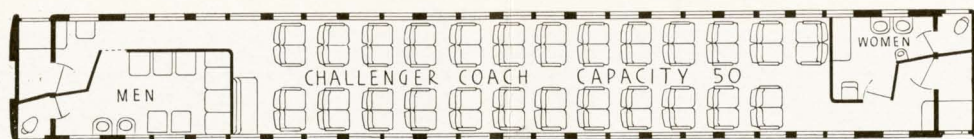
## THE FORTY NINER



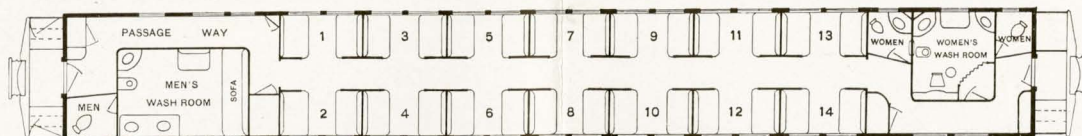
*ALTHOUGH* the name "Forty Niner" is reminiscent of the Old West, this beautiful train is a far cry from the covered wagon days. Among its many distinctive features are a Pullman Sleeper with both "downstairs" and "upstairs" bedrooms . . . a richly-appointed Diner-Lounge with round tables which provide unusual roominess . . . and a smartly-furnished Observation-Lounge car with spacious "sun room" at the observation end.



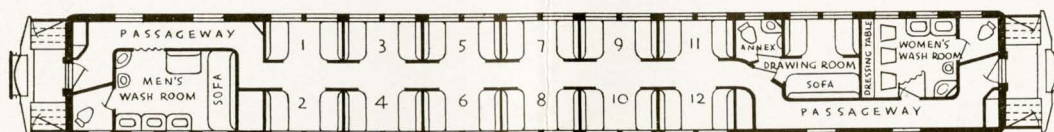
# FLOOR PLANS OF TYPICAL CARS



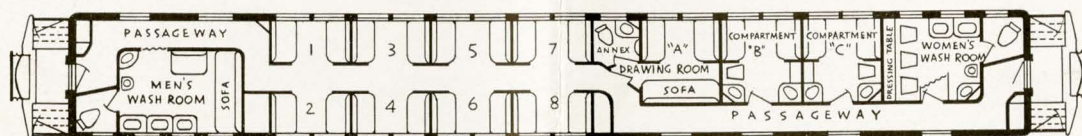
*Challenger TYPE COACH*



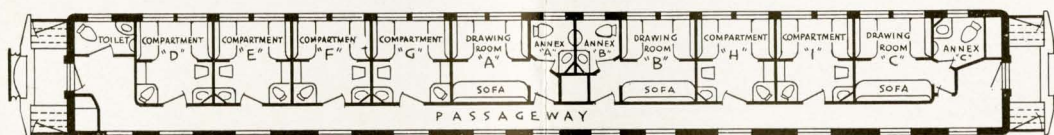
*Challenger PULLMAN-TOURIST SLEEPER*



*STANDARD PULLMAN • Open Sections • Drawing-Room*



*STANDARD PULLMAN • Open Sections • Compartments • Drawing-Room*



*STANDARD PULLMAN • All-Rooms • Compartments • Drawing-Rooms*



*CLUB CAR • Barber Shop • Bath • Buffet • Soda Fountain • Lounge Room*



*OBSERVATION-LOUNGE • Barber Shop • Bath • Buffet • Soda Fountain • Lounge Room*



# UNION PACIFIC'S FLEET OF *Streamliners*

● When you see a Streamliner flashing swiftly and smoothly across country . . . its mighty Diesel-engine throbbing with dependable power . . . its colorful exterior gleaming in the sunlight . . . you get a vivid picture of how far train-travel has advanced in recent years.

Union Pacific's fleet of powerful Streamliners connects East and West . . . traveling between Chicago and the Pacific Coast in the remarkably fast time of only 39¾ hours. The twin "City of Denver" Streamliners provide overnight, every night service between Chicago and Denver . . . 16 hours westward and 15½ hours eastward.

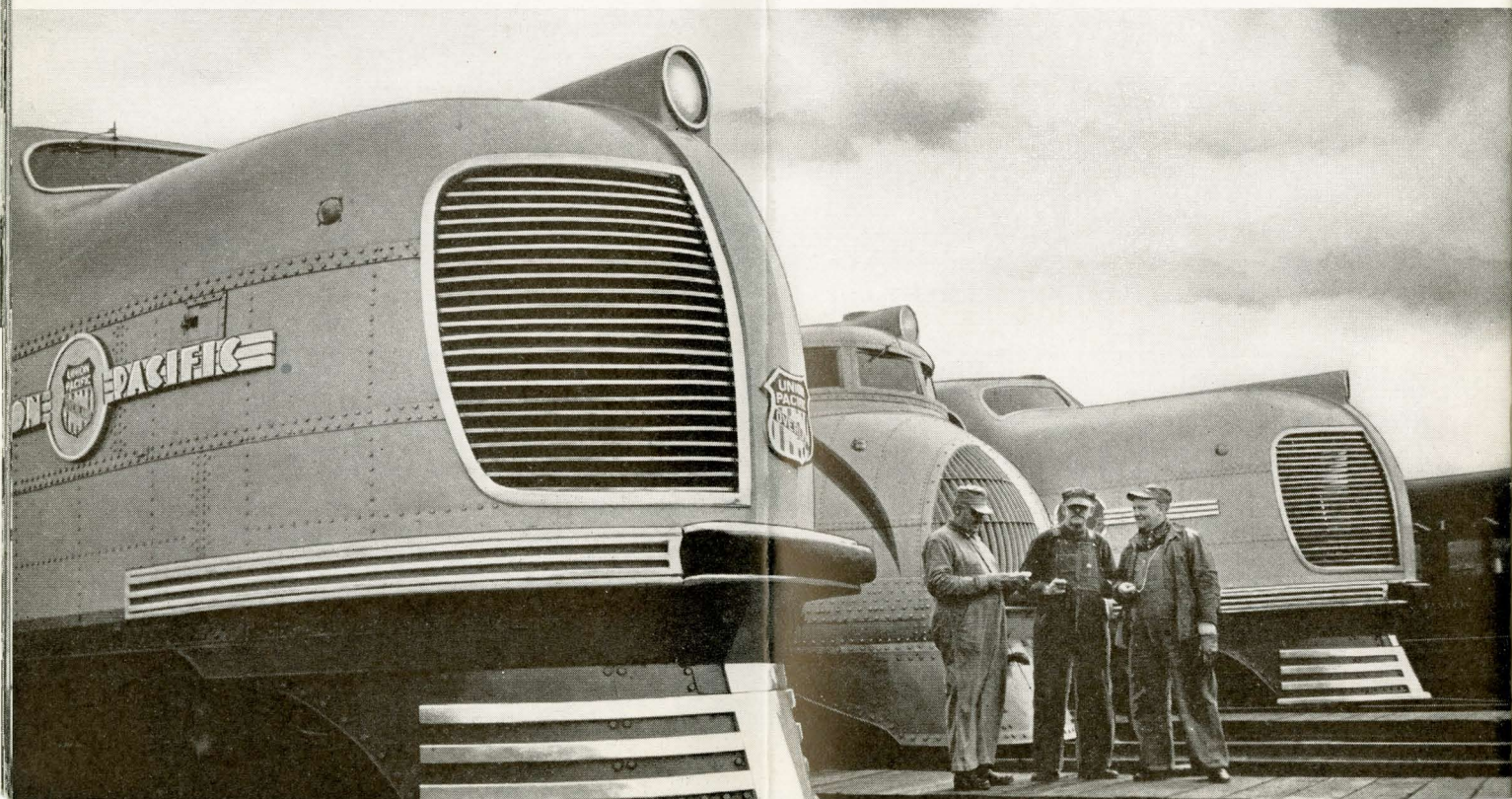
The Streamliner interiors present the most modern ideas in decorative beauty . . . in travel comforts and conveniences.

**CITY OF LOS ANGELES** There are two Pullman and coach equipped "City of Los Angeles" Streamliners operating on a 39¾-hour schedule between Chicago and Los Angeles. You save a business day! "Sailings" every third day in each direction. Extra fare.

**CITY OF SAN FRANCISCO** Pullman and coach equipped. 39¾ hours—only one day, two nights en route. Alternates with the "Forty Niner" to provide high-speed service every third day. Extra fare.

**CITY OF PORTLAND** The pioneer transcontinental Streamliner. Only two nights en route between Chicago-Portland, on a 39¾-hour schedule. Pullman and coach equipped—no extra fare. 5 "sailings" a month, each direction.

**CITY OF DENVER** Twin Streamliners representing the latest developments in streamlined train construction—operating on an overnight every night schedule—between Chicago and Denver. Experience the pleasure of traveling on this superb train. Pullmans—coaches. No extra fare.





*the Streamliner* T H E C O A C H *the Streamliner*

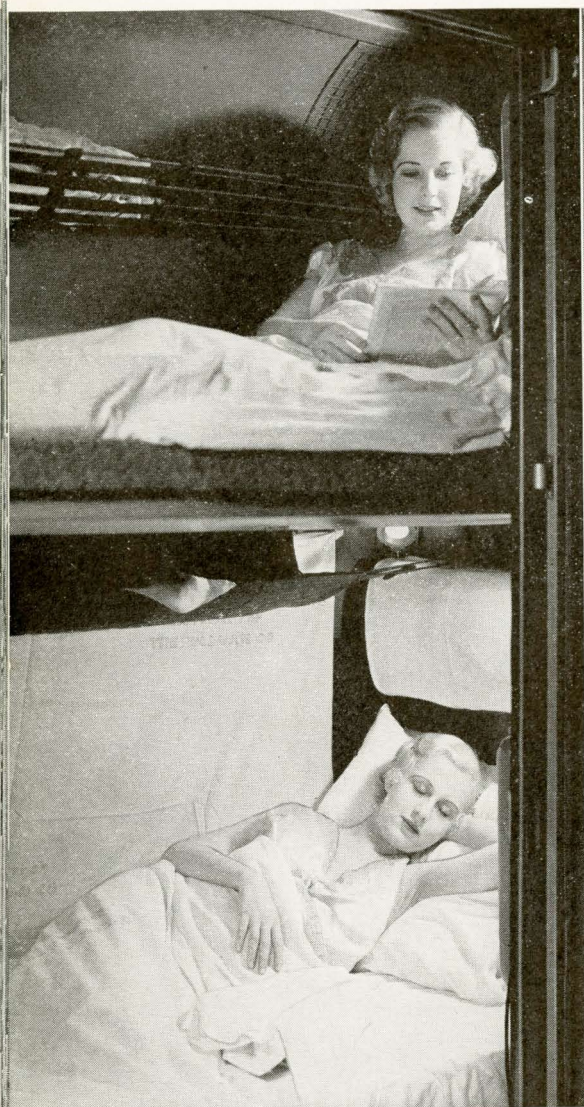


**THE COACH.** It's an unusual and most enjoyable sensation to ride in a Streamliner coach. Individual seats are easily adjusted to a comfortable reclining position and in the late evening the cleverly designed overhead lights are switched to a soft blue glow.

Due to air-conditioning, smoking is permitted and you'll find an ash tray within easy reach. In the back of the seat ahead there's a food-tray that accommodates delicious low-cost meals served by thoughtful attendants. Many Streamliner coaches are equipped with radio. In fact, you'll find a world of new ideas in train travel comforts.



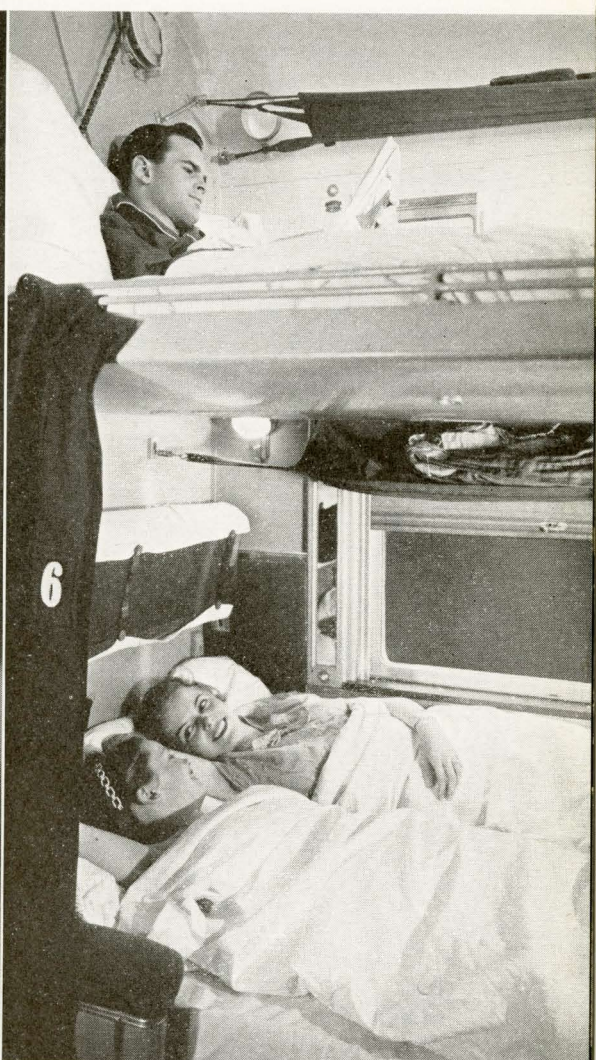
*the Streamliner* C L O S E D   S E C T I O N   P U L L M A N



*IN ADDITION* to the buttoned curtain, each section in the Streamliner closed-section Pullman has an aluminum sliding panel which is closed during night-time occupancy. There are many new features in this type of Pullman car. You will like the convenient individual steps for upper berths. They automatically fold up when not in use and may be easily removed when the space is used as a section for a single occupant.



# OPEN SECTION PULLMAN *the Streamliner*



***THE*** Streamliner open-section Pullmans do not have the sliding panels but you are assured of maximum sleeping comfort. There's a sponge-rubber padding under the thick carpet so that the movement of passengers or attendants passing through the car will not disturb your slumber. You awaken in the morning feeling completely refreshed and rested. The car interior is extremely attractive in design and decoration.





# *the Streamliner* ROOM CAR



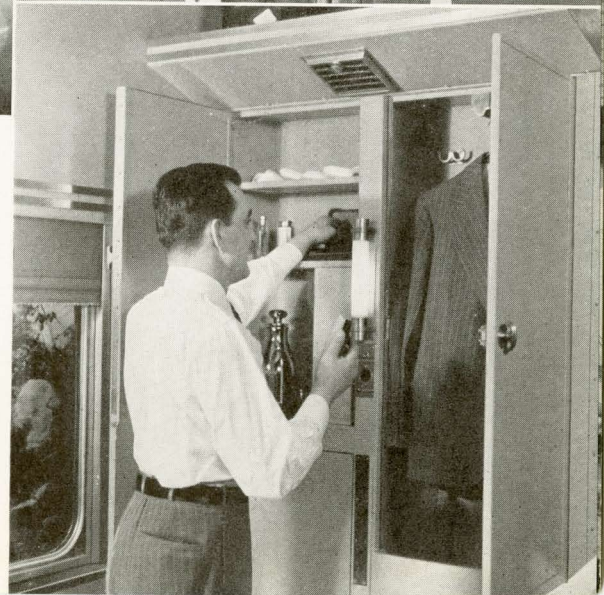
***IN THE*** Streamliner room car you have the comfort of a private bedroom with dressing room facilities. There's no need to leave the seclusion of your room until you are dressed and ready to enjoy breakfast in the Diner. Or, for that matter, you can ring the service bell and have your meals served in the room. All rooms are finished in harmonizing colors. Among the fittings are drop table, ash trays and eye-glass holders.



# THE "ROOMETTE" CAR *the Streamliner*



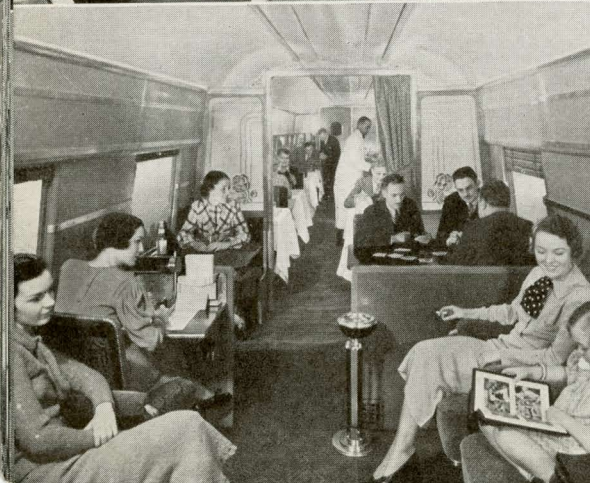
**ONE** of the most recent innovations in Pullman car design is the "roomette". It is an individual bedroom with folding bed, complete toilet facilities, clothes closet and large baggage rack. There is ample space for lounging or undressing, before the bed is lowered. During the day time it is converted into a spacious lounge seat. The "roomette" provides complete comfort and privacy.





*the Streamliner*

# D I N I N G C A R S



**ON** Union Pacific Streamliners traveling between Chicago and California there are two dining cars. One is the "coffee shop" diner, attractively furnished and bright with harmonizing colors, where moderately-priced meals are served. In the main diner, the furnishings are more elaborate and the menu offers a wide variety of tempting dishes. One kitchen serves both diners. Only the finest of foods are used in Union Pacific "meals that appeal".



# OBSERVATION LOUNGE

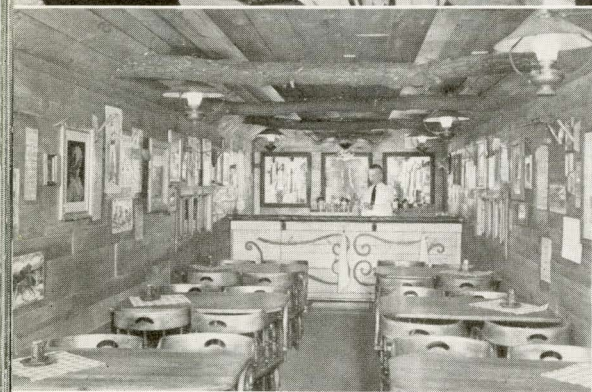
*the Streamliner*



**THE** large photo shows the "Copper King" Observation Lounge Car on a "City of Los Angeles" Streamliner. It is finished in shimmering copper and equipped with Polaroid "light conditioning" windows which eliminate glaring sunlight without shutting off the view. It is unusual features of this nature that make Union Pacific Observation Cars delightful havens of rest and recreation for Pullman passengers.



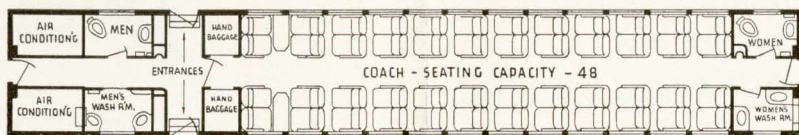
*the Streamliner* CLUB LOUNGE *the Streamliner*



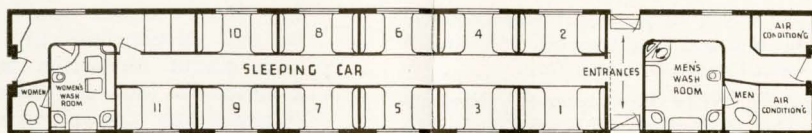
***DISTINCTIVELY*** different in design and decoration, "The Little Nugget" Club Lounge car . . . on a "City of Los Angeles" Streamliner . . . has the authentic atmosphere of the early Nineties period; and the unique "Frontier Shack" Club Car on the "City of Denver" takes you back to the days of '49. In delightful contrast, the Club Lounge car on the "City of San Francisco" Streamliner is up to the minute in its smart appointments.



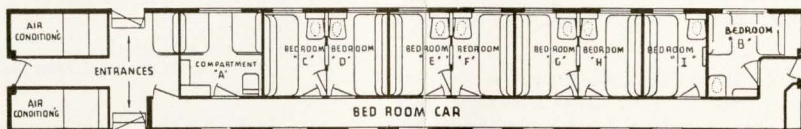
# TYPICAL *Streamliner* DIAGRAMS



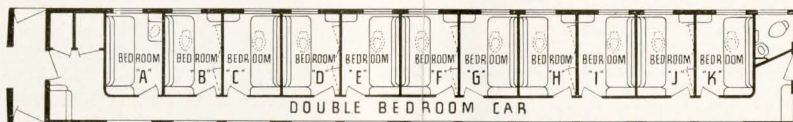
COACH



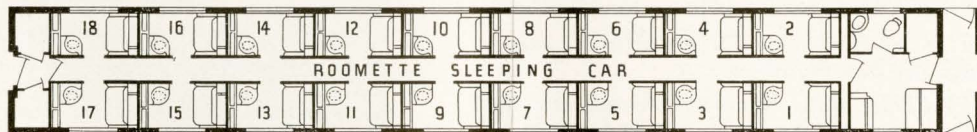
OPEN SECTION SLEEPING CAR



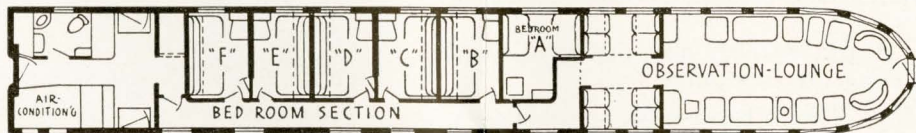
ALL-ROOM SLEEPING CAR



DOUBLE BEDROOM SLEEPING CAR



ROOMETTE SLEEPING CAR



OBSERVATION-LOUNGE (Bedroom Sleeping Car)



OBSERVATION-LOUNGE CAR



# UNION PACIFIC

*Famous and Popular Through Trains  
Cover the West*

## THE STREAMLINERS

**CITY OF DENVER** Twin Streamliners between Chicago and Denver. Overnight, every night service. No extra fare.

**CITY OF LOS ANGELES** Two powerful Streamliners in service between Chicago and Los Angeles. "Sailings" every third day from each terminal. Extra fare.

**CITY OF SAN FRANCISCO** This splendid Streamliner alternates with the all-Pullman "Forty Niner" to provide high-speed service every three days between Chicago and San Francisco. Extra fare on both trains.

**CITY OF PORTLAND** Operates between Chicago and Portland. Five "sailings" each month west and east. No extra fare.

**THE FORTY NINER** Beautiful, all-Pullman steam-powered train of streamlined design. Fast schedule cuts ten hours from regular steam train running time between Chicago and San Francisco. Five departures each way, each month.

### AND AMERICA'S FAMOUS TRAIN "THE CHALLENGER"

Daily between Chicago and Los Angeles, San Francisco or Portland. The train sensation of the Age—Economical travel—Luxurious comfort.

### AND THESE NOTED TRAINS

**LOS ANGELES LIMITED** Daily between Chicago and Los Angeles.

**PORTLAND ROSE** Daily between Chicago and Portland.

**SAN FRANCISCO OVERLAND LIMITED** Daily between Chicago and San Francisco.

**PACIFIC LIMITED** Daily between Chicago and Los Angeles, San Francisco and Portland. Daily between St. Louis, Kansas City, Denver and Los Angeles, San Francisco and Portland, Seattle.

**THE COLUMBINE** Daily between Chicago, Omaha and Denver.

**THE MOUNTAIN BLUEBIRD** Daily during summer season between Chicago, Omaha and Denver.

**DENVER LIMITED** Daily between St. Louis, Kansas City and Denver.

**PONY EXPRESS** Daily between Denver, Ogden, Salt Lake City, Los Angeles, San Francisco and Portland.

**BUTTE EXPRESS** Daily between Salt Lake City, Ogden and Butte.

**THE SPOKANE** Daily between Spokane and Portland.

**YELLOWSTONE EXPRESS** Daily during the Park season between Salt Lake City, Ogden and West Yellowstone, Mont.  
**YELLOWSTONE SPECIAL**



## For Further Information

—about accommodations and services on Union Pacific trains and those of connecting lines—about rates, schedules—and for full information and illustrated literature about territories served by Union Pacific—in fact, for details about travel everywhere, consult your nearest Union Pacific office:

ATLANTA, GA.	1232 Healey Building
BOISE, IDAHO	212 No. 8th St.
BOSTON, MASS.	207 Old South Bldg., 294 Washington St.
BUTTE, MONT.	609 Metals Bank Bldg.
CHICAGO, ILL.	1 South La Salle St.
CINCINNATI, OHIO	705 Dixie Terminal Bldg.
CLEVELAND, OHIO	1006 (tenth floor) Terminal Tower
DALLAS, TEXAS	1029 Kirby Building
DENVER, COLO.	535 Seventeenth Street
DES MOINES, IOWA	407 Equitable Bldg.
DETROIT, MICH.	131 Lafayette Blvd., West, Room 508
EAST LOS ANGELES, CALIF.	5454 Ferguson Drive
FRESNO, CALIF.	207 Rowell Bldg.
GLENDAL, CALIF.	206 North Brand Boulevard
HOLLYWOOD, CALIF.	6702 Hollywood Blvd.
KANSAS CITY, MO.	208 East Eleventh Street
LINCOLN, NEBR.	130 So. 13th St.
LONG BEACH, CALIF.	144 Pine Ave.
LOS ANGELES, CALIF.	Union Pacific Bldg.
MILWAUKEE, WIS.	212 W. Wisconsin Ave., Room 814
MINNEAPOLIS, MINN.	620 Marquette Ave., Room 890
NEW ORLEANS, LA.	226 Carondelet St., Room 1007
NEW YORK, N. Y.	521 Fifth Ave., Room 511
OAKLAND, CALIF.	436 Fourteenth St., Room 215
OGDEN, UTAH	Ben Lomond Hotel Bldg.
OMAHA, NEBR.	301 South 16th Street Union Pacific Bldg., 1416 Dodge St.
PASADENA, CALIF.	205 West Colorado Street
PHILADELPHIA, PA.	904 Girard Trust Building
PITTSBURGH, PA.	216 Oliver Building
PORTLAND, ORE.	701 S. W. Washington Street
REDLANDS, CALIF.	4 Orange Street, Fisher Building
RIVERSIDE, CALIF.	Union Pacific Passenger Station
SACRAMENTO, CALIF.	1107 Ninth St., Room 217
ST. JOSEPH, MO.	517 Francis St.
ST. LOUIS, MO.	308 North Sixth St., Room 203
SALT LAKE CITY, UTAH	Hotel Utah Bldg.
SAN DIEGO, CALIF.	320 Broadway
SAN FRANCISCO, CALIF.	355 Geary St., Hotel Stewart
SAN JOSE, CALIF.	206 First National Bank Building
SEATTLE, WASH.	204 Union Station and 1403 Fourth Ave.
SPOKANE, WASH.	727 Sprague Ave.
TACOMA, WASH.	114 South Ninth Street
TORONTO, ONTARIO	69 Yonge St., Room 201
TULSA, OKLA.	321 South Boston St., Room 320
WALLA WALLA, WASH.	Main and Second Streets
WASHINGTON, D. C.	300 National Press Bldg.
YAKIMA, WASH.	Union Pacific Bldg. 104 W. Yakima Ave.

or write to

W. S. BASINGER, Passenger Traffic Manager  
Union Pacific Railroad  
1416 Dodge St.  
Omaha, Nebraska

THE PROGRESSIVE  
UNION PACIFIC RAILROAD