

IDAHO - UTAH

VACATION PLAYGROUNDS

IDAHO - UTAH

VACATION PLAYGROUNDS

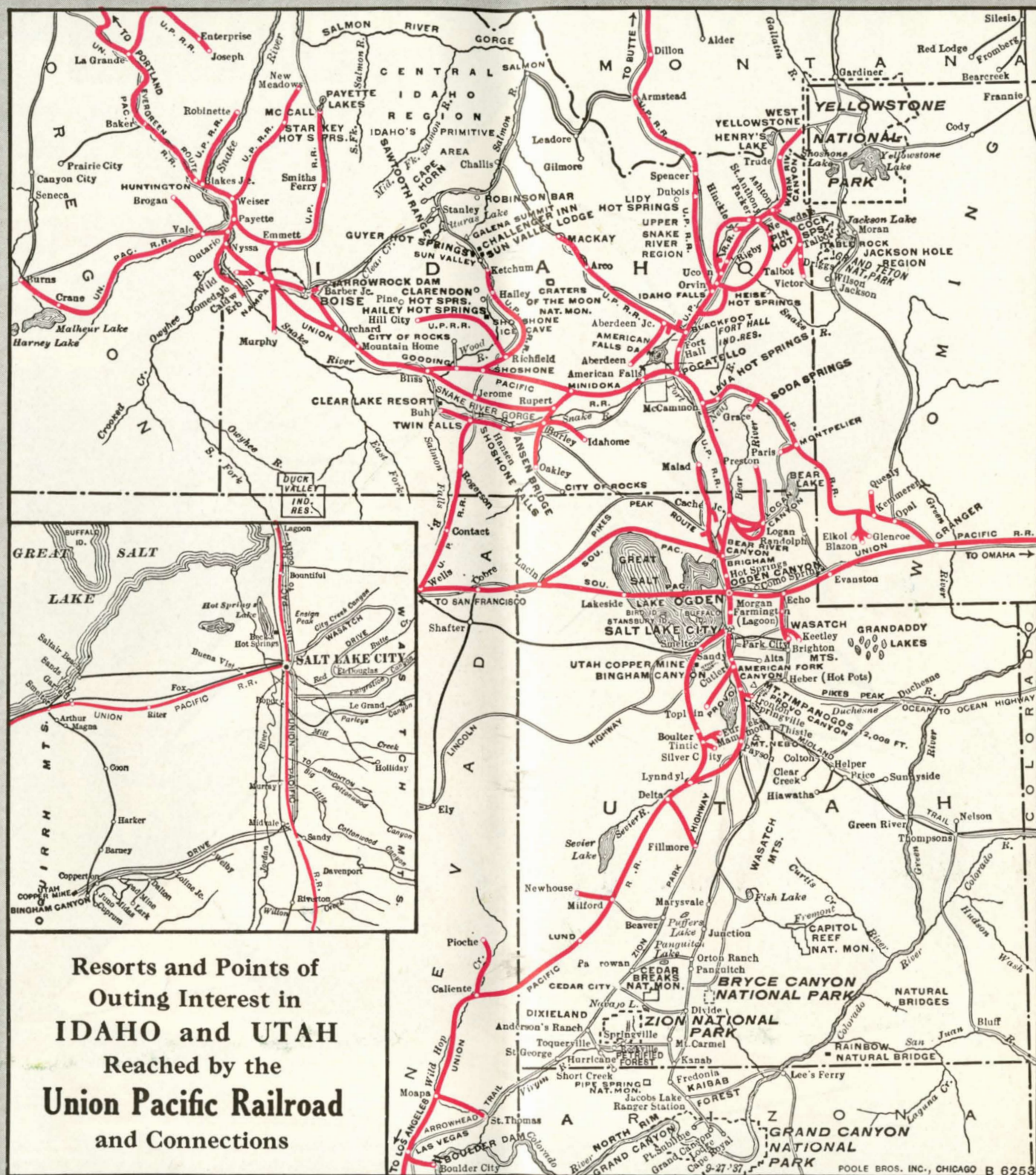


THE PROGRESSIVE

UNION PACIFIC

THE PROGRESSIVE

UNION PACIFIC



IDAHO-UTAH



The White Cloud Loop of the Sawtooth Mountain Range, Idaho.

IN IDAHO AND UTAH, the most striking scenic features—the most charming nooks and haunts by mountains, lakes and streams and the richest mining and agricultural regions lie inland from the main travel routes. It is to these that attention is herein directed.

Reached by the Union Pacific Railroad

OUTINGS in the SUMMER and WINTER VACATION REGIONS of IDAHO and UTAH

Bounded by vast gorges to the north and the south and by mountain ranges to the east, Idaho and Utah are a topographical unit intimately linked by convenient rail service and automobile highways.


A variety of scenic features are displayed in this mountain wonderland. To the north, we have the wild regions of the Upper Snake River country of Idaho bordering on Yellowstone National Park with its geysers and other interesting phenomena; the picturesque Central Idaho country including beautiful Salmon River Gorge; the inspiring peaks, canyons and lakes of the rugged Sawtooth Range and the equally charming Payette Lakes region. Lovers of outdoor sports find ample activity, both summer and winter, in the vicinity of Sun Valley—Idaho's ideal vacation region.

In addition to this region of primitive beauty we have the spectacular show places of southern Utah's National Parks. . . . Zion, Bryce and Grand Canyon and Cedar Breaks National Monument.

Interspersed between these scenic extremes are many hot springs, lakes, rivers, cataracts and waterfalls.

Since the early days of the trading posts and the coming of the Mormon Pioneers to Salt Lake Valley, the natural grandeur of this wonderful region has remained unspoiled. To all, over whom Nature throws her magic spell, an invitation is extended to visit this wonderland of heights and depths, of rainbow lights and purple shadows, of roaring waterfalls and placid lakes.

In this territory served by the Union Pacific Railroad, one may find healthful recreation of every description in addition to scenic attractions. Some of the best fishing and hunting in America may be had in the various vacation lands described in this folder.



The Three Brothers . . . Sawtooth Mountain Range.

Union Pacific Railroad Direct Route

The scenic and recreational regions of Idaho and Utah are conveniently and directly reached by the Union Pacific Railroad.

Coming from the east on the main line the tracks diverge at Granger, Wyoming. One route leads directly to Idaho points, Yellowstone National Park and the Pacific Northwest. From Shoshone, branches a line which leads to Ketchum, Idaho, nearby America's newest sport center, Sun Valley.

The other route turns southwest to Southern California through Ogden and Salt Lake City, Utah. This southwest route also goes directly to Lund, Utah, the Rail Gateway for the famous Utah-Arizona National Parks, Zion, Bryce and Grand Canyon.

Idaho—Land of Primitive Beauty

Idaho is literally covered with hundreds of lakes, rivers and streams as well as rugged moun-



Pettit Lake . . . Sawtooth Forest Reserve.

tain peaks and virgin forests, all of which combine to make this western territory one of the Nation's outstanding regions in point of scenic beauty and recreational opportunities. A number of Idaho's attractions are dealt with in the following pages.

Lava Hot Springs

This popular resort is on the beautiful Port Neuf River and a charming valley thirty-six miles east of Pocatello, Idaho, on the Union Pacific Railroad.

The highly mineralized waters possess curative powers for common ailments. Indoor and open-air pools, maintained by the state, are available to visitors for a small fee. The Riverside Hotel and Sanitarium and the Whitestone Hotel provide tub baths (free to guests). Two new cabin camps provide comfortable accommodations at rates ranging from \$10 to \$20 per week. These resorts are located on the Caribou Reserve which carries more stock than any other reserve in the United States.

Note: Attention of travelers enroute to or from Yellowstone Park is directed to resorts tributary to the Yellowstone line of Union Pacific—a convenient side trip northward from Pocatello.



Pyramid Peak . . . Central Idaho.

Near Lava Hot Springs, Idaho.



Soda Springs

In the southeastern corner of Idaho, Soda Springs is located. The mountains to the east contain phosphate deposits. The 22 mineral springs in this locality are rich in medicinal properties. There are good hotel accommodations and a splendid hospital in Soda Springs. Near-by is 4S Ranch with a ten-room log house and cabins for guests who can enjoy activities such as horse-back riding, fishing, swimming and hunting. Rates \$25—\$35 per week. For information write A. R. Strong, 4S Ranch, Soda Springs, Idaho.

Heise Hot Springs

Heise Hot Springs are at Heise, Idaho, on the south fork of the Snake River at the foot of the Kelly Mountains, in the Targhee National Forest. Here too, you will find pools supplied with medicinal mineral water. Many forms of outdoor

activities may be enjoyed in the charming surroundings. Rates—\$2.50 per day, including room and board. Manager, Mrs. Bertha Gavin, Heise, Idaho. (The nearest railway points are Byrne on the Idaho Falls Belt Line and Rigby on the Yellowstone Park line of the Union Pacific.)

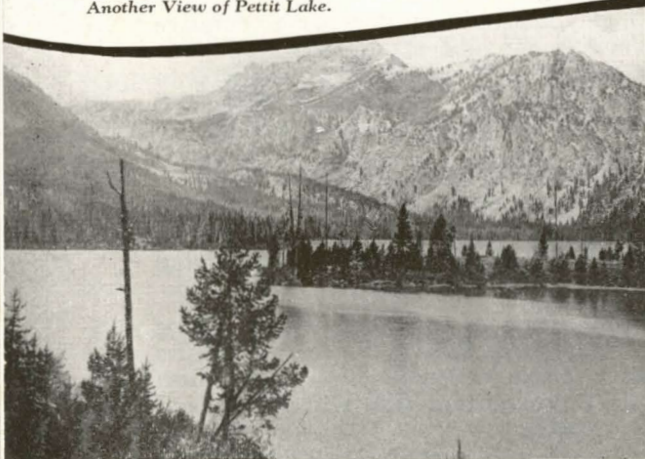
Pincock Hot Springs

The water at this resort is well known for its curative properties. One pool is 56 feet wide and 106 feet long. The resort is located on Canyon Creek, fourteen miles east of Newdale, Idaho—twenty miles east of Sugar City.

Gill's Wild Rose Ranch

This picturesque Summer resort is located on Henry's Lake, eighteen miles west from West Yellowstone Station. It offers excellent boating and trout fishing. Cottages may be reserved by

Another View of Pettit Lake.

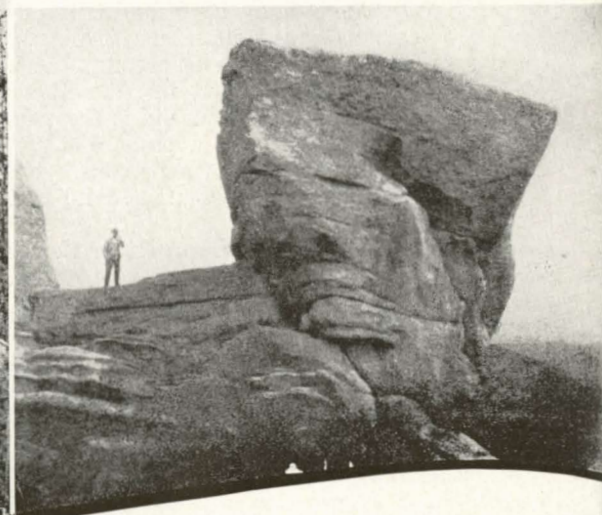


Right—Heise Hotel at Heise Hot Springs.



Stanley Lake Camp Scene in the Sawtooth Region.

Saddle Rock, Near Oakley, Idaho.



Central Idaho Country

addressing Mr. or Mrs. G. H. Telford, Henry's Lake, Idaho, via Monida, Montana.

The Jackson Hole Region

The famous Jackson Hole region and Grand Teton National Park of Wyoming may be reached from Ashton, Idaho, on the Yellowstone line or Victor, Idaho, on the Teton branch of the Union Pacific Railroad.

Table Rock (Teton Range), one mile west of Grand Teton, is an inspiring point where one may view the scenic regions of the country for many miles around, including the Grand Teton Mountains. This attraction is only six hours from Driggs, Idaho by Union Pacific or thirteen miles by auto and five miles by horseback. Arrangements for the trip should be made through the Secretary, Commercial Club, Driggs, Idaho.

This territory embraces the primitive Sawtooth Range region, and the recently developed smart sports center, Sun Valley Lodge, and Challenger Inn pictured and described on the center page spread. In addition there are many other places of interest to vacationists including:

Robinson Bar

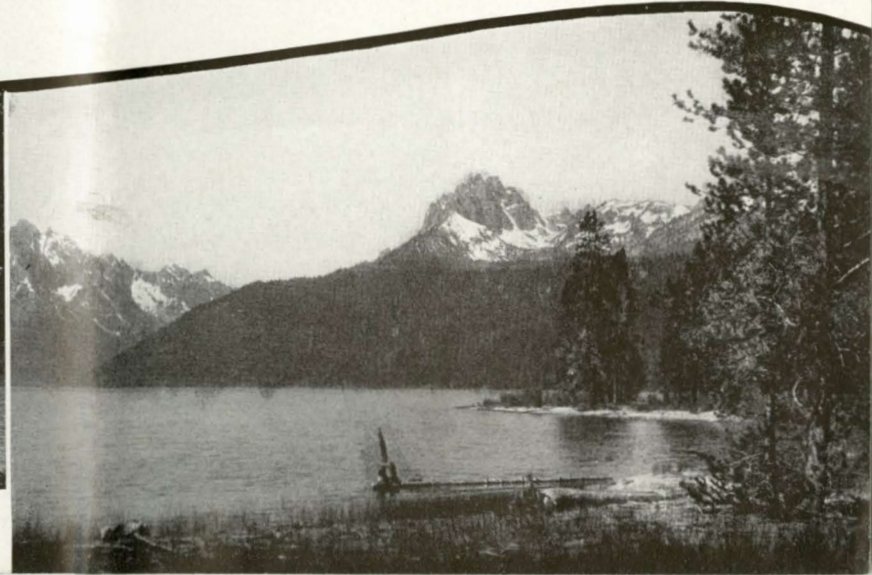
So called because it was a placer gold-mining bar in the early days. It is on the Salmon River at the mouth of Warm Springs Creek and lies on the edge of Stanley Basin and the Sawtooth Mountain Range, seventy-five miles northwest from Union Pacific Station at Mackay.

At 6,000 feet altitude, days are comfortably warm and nights cool. A hot alkaline-sulphur

Vernon Lake.



Right—Big Red Fish Lake.



spring gushes out of the mountain side into two swimming pools.

The Salmon River and tributaries provide excellent trout and salmon fishing. Bear, cougar, deer, goats and sheep are numerous. Accommodations are provided in attractive rustic houses. The season for tourists is from June 1st to October 1st. Rates average \$30 per week for one person, \$55 for two persons. For reservations, write Charles A. Clark, Idaho Falls, or Clayton, Idaho.

Salmon River Gorge

The Salmon River region, a vast wilderness of mountains, lakes, and streams is traversed by the mighty Salmon River whose headwaters lie in the heart of the Sawtooth National Forest. Here the adventuresome sportsman is offered a thrilling boat trip down the Salmon beginning at Salmon

City and ending at Lewiston, Idaho, on the Snake River 350 miles distant.

The trip takes from twelve to twenty days depending on the desires of the voyagers. The trip is taken in a double-bottomed scow, about 32 feet long and 8 feet wide, a type of craft that has proved the safest for navigating the river, which, for the most part, runs like a mill race through a giant gorge.

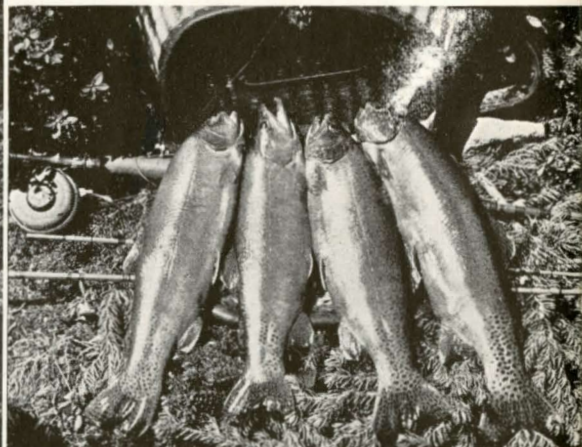
The trip by train is to Armstead, Montana, either from Butte or from Salt Lake City via the Union Pacific Railroad, thence by the Gilmore & Pittsburgh Railroad to Salmon City, an even one hundred miles, or from Mackay, Idaho, by stage.

Lidy Hot Springs

This resort is twenty miles southwest from Dubois, Idaho. There is a large outdoor pool



Idaho's Lakes and Streams offer real sport for ardent anglers.



Left—Salmon River Canyon.



30 by 80 feet, and four smaller indoor pools all fed by hot mineral waters, tasteless and odorless. Dancing and other entertainment provided. No lodging or meal accommodations.

Note: At Shoshone, consideration should be given to a side trip on the Ketchum-Sun Valley branch of the Union Pacific, into the Wood River country where attractive features of outdoor life may be enjoyed. From Ketchum or Hailey, several hot springs resorts and the wonderful Central Idaho country are reached.

The Shoshone Ice Cave

This cave contains large rooms and halls with walls, floors and ceilings of solid ice which remains at all seasons of the year. It is located twenty miles north of Shoshone on the main automobile highway leading to Hailey. Parties are transported by bus or car from Twin Falls, Gooding or Jerome. Arrangements must be made in advance. For more detailed information address Chamber of Commerce, Shoshone, Idaho.

"Craters of the Moon" National Monument

This remarkable region, the result of a great lava flow, covers 250 square miles. This locality gives one the impression of having ventured into a "lost world." Curious formations have a remarkable attraction for visitors. The region is easily reached from points on the Union Pacific line, Shoshone to Ketchum-Sun Valley. For guests at Sun Valley Lodge it is a most interesting *plus* attraction, conveniently reached from the Lodge.

Hotel Hiawatha and Hailey Hot Springs

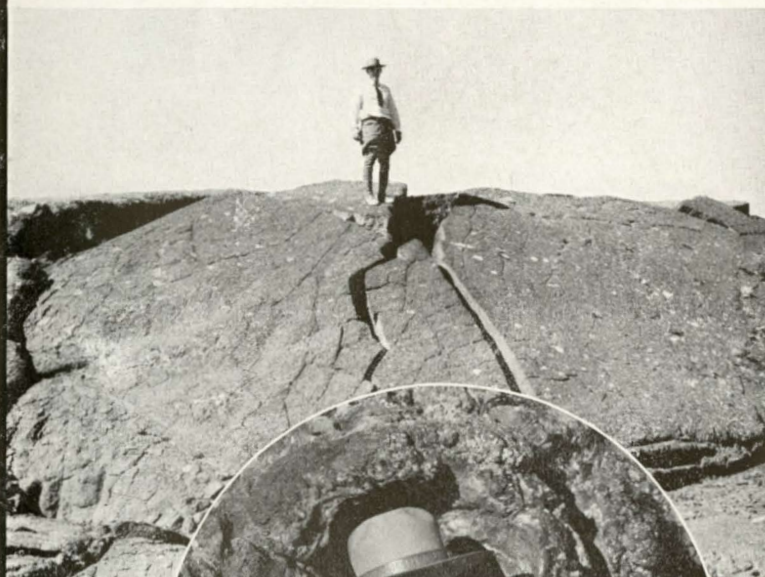
At Hailey is Hotel Hiawatha, a brick building with 82 rooms, natural hot water and bathing pools. Rates for rooms range from \$1.50 to \$2.50 a day. Also 11 apartments in connection with hotel, with rates from \$15 to \$60 a month. L. S. Friedman, Manager, Hailey, Idaho, may be addressed for further details.

Clarendon Hot Springs

These springs, six miles from Hailey, with tub, shower and pool baths, are noted for cures of rheumatism, skin and blood diseases, and nervous ailments. Rates \$1.50 single, \$2.50 double, per day. Address Mrs. E. C. Smith, Manager, Hailey, Idaho.



Cave and Lava Formations, Craters of the Moon National Monument.



Twin Falls in Snake River.



Camp at Chamberlain Lake in the White Cloud Loop of the Sawtooth Range.



St. Georg Hotel

This is a recently built structure with modern facilities at Ketchum, Idaho. Provides forty rooms with baths. For rates and reservations write Mr. C. E. Brandt, Ketchum, Idaho.

Northward from Hailey and Ketchum

Leaving Hailey and Ketchum the road leads along Wood River to Lake Creek and continues along the river to Russian John's ranger station, thirty-one miles from Hailey. From Russian John's to Galena Summit is eleven miles over an excellent highway. Beyond Summit is Alturas Lake, fifty-three miles from Hailey, with a small store providing supplies and gasoline. This is the last outfitting point, until Neice's Store, twenty-five miles farther near Stanley, Idaho. There are no satisfactory accommodations between Neice's and Challis, sixty miles distant. From Challis, return trip may be made by way of Mackay.


Pine, Idaho

Twenty miles beyond Hill City, terminus of a short branch diverging from the Ketchum branch of Union Pacific, is the mountain resort town of



Hell Roaring Canyon.

Outlet of Alice Lake.



Camp at Prairie Creek Lake, Smoky Range Loop of Sawtooth Range.

Pine, on the south fork of the Boise River. Good fishing and hunting. Equipment and saddle horses are available. Bill Tate, Pine, Idaho, is outfitter and guide.

The Twin Falls Region

Note: At Minidoka, the Twin Falls branch of the Union Pacific diverges to Buhl through the famed Twin Falls country.

The South Side Twin Falls Irrigation District of 240,000 acres is the largest single irrigation district in the United States.

There are excellent hotel accommodations in Twin Falls, the center from which outings in the region may be enjoyed. The best plan for sight-seeing is to hire automobiles for a circle tour to the Snake River Gorge, Hansen Bridge, Twin Falls-Jerome Intercounty Bridge, Shoshone Falls, Twin Falls, Blue Lakes Farm and other points.

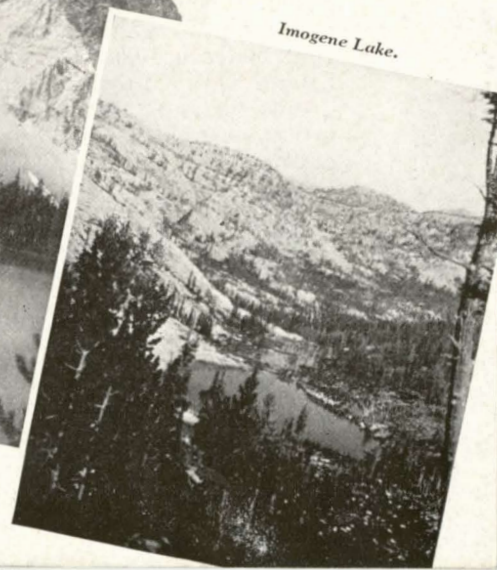
The Shoshone Falls, often mentioned as "the Niagara of the West" are about five miles from Twin Falls. In late spring, there may be seen one of the most inspiring views in the West. The waters of the Snake River make an immense leap of two hundred and twelve feet (greater than that of Niagara) between lava cliffs and break into a wild turmoil in a bowl beneath.

Twelve miles from Twin Falls is Hansen Bridge 345 feet above the river bottom and 688 feet long.

Blue Lakes Farm, three miles from Twin Falls, takes its name from the deep blue waters and

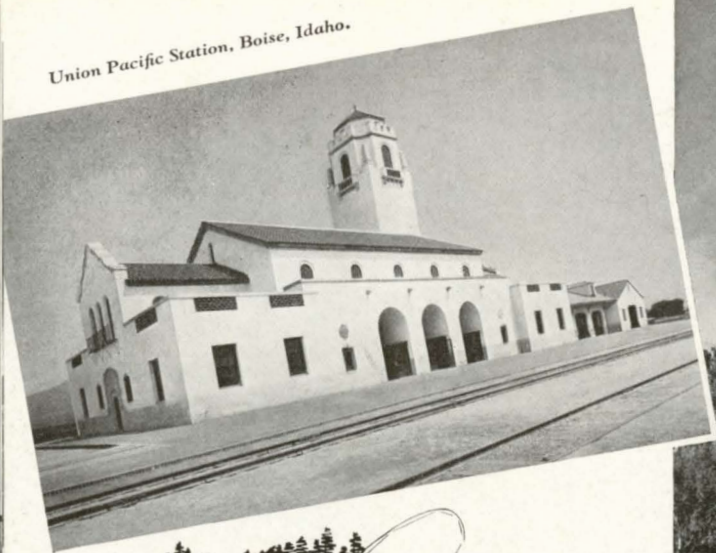


Champion Lake.



Imogene Lake.

Union Pacific Station, Boise, Idaho.



numerous small spring lakes which harbor various species of trout. The farm produces fruit of exceptional quality.

City of Rocks

"City of Rocks" is approximately twenty-five miles by auto highway south easterly from Oakley, Idaho. It comprises fifteen square miles of bizarre rock sculpturing. Near this region rises Mount Independence, 10,550 feet high, while in the vicinity are five blue crystal-clear lakes. For further details address Charles Brown, Publisher, The Oakley Herald, Oakley, Idaho, or the Chamber of Commerce, Gooding, Idaho.

Boise, Idaho

From Orchard, Idaho, westbound, or Nampa, Idaho, eastbound, you travel over the Boise Main Line of the Union Pacific to Boise, Idaho, the state capital. Boise is an attractive progressive city in the center of a charming scenic region which includes Arrowrock Dam and the Payette Lakes. One of the many attractions in Boise is a hot springs natatorium with a pool 60 by 125 feet. Many of Boise's homes are heated by water from the same source which supplies the pool.



Above—The Idaho State Capitol at Boise.

Arrowrock Dam

An easy motor trip from Boise over a splendid scenic highway brings one to Arrowrock Dam and to the Reservoir. This government enterprise was built at a cost of \$4,600,000. The dam, a massive concrete structure, is 353.6 feet from bed-rock to the drive-way across its crest, second in height only to Boulder Dam on the Colorado River.

Payette Lakes

If time permits, a journey to Payette Lakes from either Boise or Nampa should not be missed. It is a delightful region where one will find canoeing, motor-boating, fishing and golfing in an at-

Clarendon Hot Springs.



mosphere fragrant with the scent of pines. There are a number of resorts at Payette Lakes.

Payette Lake Inn

This modern structure is located on the west side of Big Payette Lake, two miles from McCall, Idaho, a Union Pacific terminal. It is strictly a resting and recreation place for summer vacationists, providing good accommodations with bathing, boating, tennis and golf. Saddle horses are available. Rates at the Inn, \$1.00 to \$3.50 per day. Special rates by week or month. Season May 1st to October 15th. A. H. Murphy, Manager, McCall, Idaho.

Lakeview Camp No. 1

Located on east shore of Payette Lakes, one-fourth mile from McCall, Idaho. A beautiful setting of pines and firs. Accommodations comprise tents furnished for housekeeping, including electric lights and piped well water. Free ice is available.

Lakeview Camp No. 2

Located two and one-half miles from McCall, Idaho. Excellent bathing beach. Trout fishing in June and part of July; in nearby streams in July and August. Big game hunting, particularly deer and bear, starts September 16th. Accommodations similar to Camp No. 1. Rates at both camps \$10 per week for tents to \$25.00 for four room cabins. G. A. Newcomb, Manager, McCall, Idaho.

Sylvan Beach Resort

Accommodations for one hundred people. Rates for cabins and cottages range from \$3.00 to \$10.00 a day—\$18.00 to \$60.00 a week. Many of the larger cottages are well furnished and completely equipped for housekeeping. Season, June 1 to September 15. Boats and autos meet trains at McCall. For reservations, write Ralph W. Overton, Sylvan Beach, McCall, Idaho.



South Fork of Payette River.



Payette Lake Inn.



Right—Alice Lake in the Sawtooth Range.

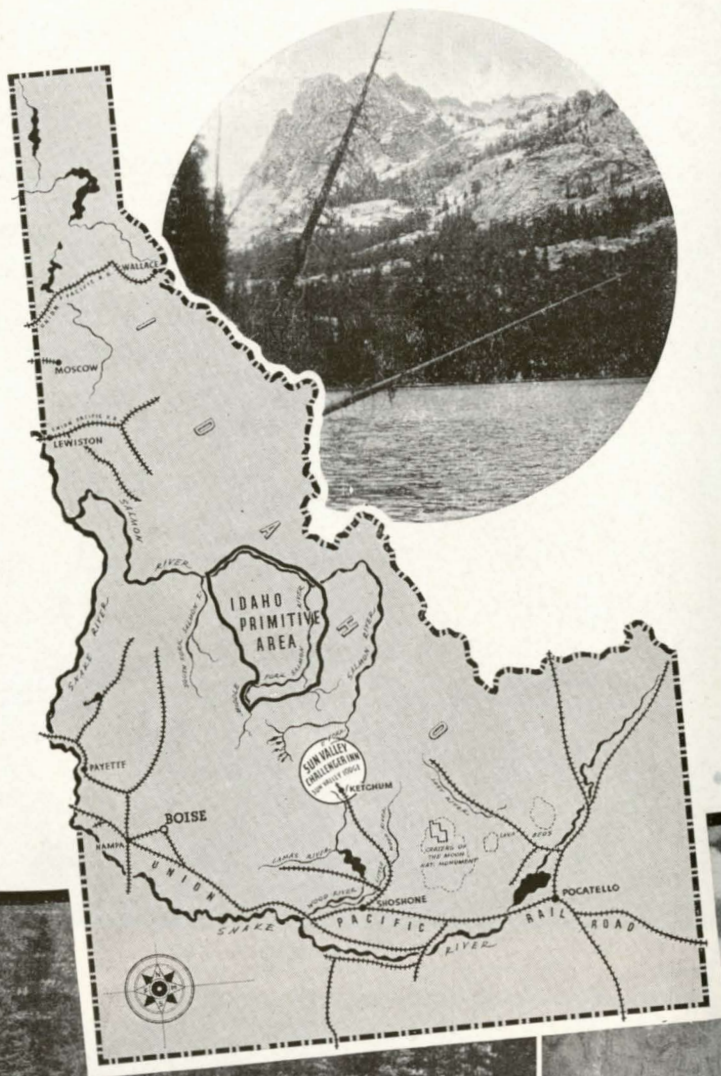
IDAHO'S PRIMITIVE AREA

A million acres of virgin forest land . . . a setting of scenic splendor for natural wild life, virtually untouched by man-made improvements of any kind—that's the Idaho Primitive Area! One of nature's last strongholds, Federal and State authorities are cooperating to maintain it in as nearly as possible the original state. The only improvements allowed are those necessary for protection against fire. It is not intended, however, to lock the area against use by the public, and each season it attracts more and more visitors who enjoy its solitude and beauty.

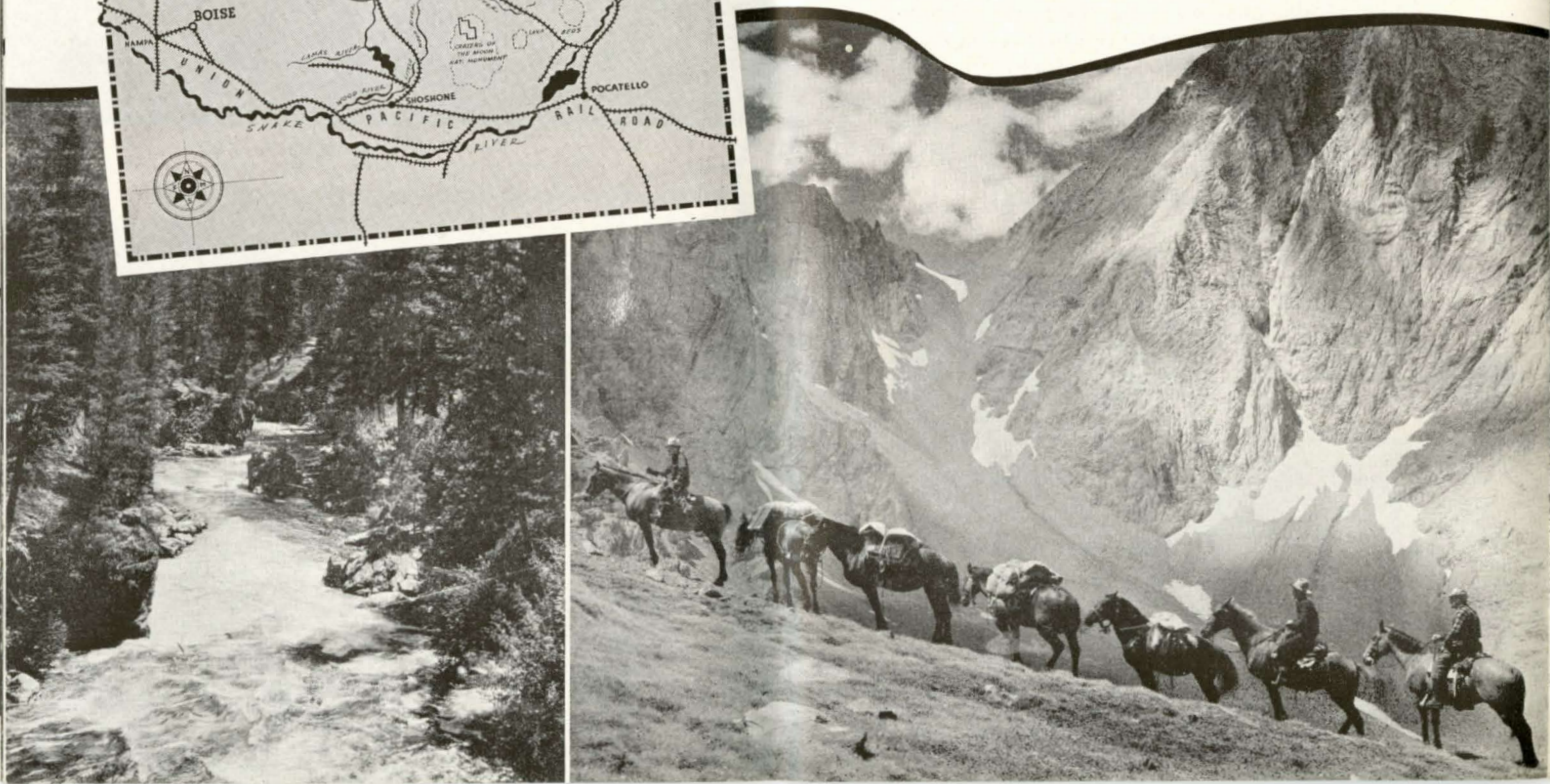
The Primitive Area is located in a remote region northwest of Sun Valley, bounded on the north by the Salmon River; on the east by the Big Horn Crags, Yellowjacket Range, and Sleeping Deer Mountain; on the south by a line approximately four miles south of and paralleling the middle fork of the Salmon River west to Rapid Creek; and on the west by the watersheds of Marble, Monumental, Beaver and Chamberlain creeks.

Broken by mountainous crags and gashed with thousands of swift cold streams, the Area provides a perfect environment for wild life. Elk, deer, mountain goat, mountain sheep, bear, cougar, coyote, and smaller game animals and birds are to be found in large numbers, while fish abound in the waters. "On the basis of variety and abundance of game and fish," writes the National Forest Service, "it is one of the best hunting and fishing grounds in the United States."

In this region one finds himself in a truly different world—an extreme opposite from the artificialities of city life. Excursions to some of the remote spots are well worth while. For the nature lover who desires seclusion, here is the ideal place! Good roads lead to the boundaries of the Primitive Area.



Near Castle Creek Pass, White Cloud Range Loop of Sawtooth Range.





Winter Sports and Recreation

Idaho and Utah are noted not only for the many attractions they offer to summer visitors but also for the many recreational activities and sports for winter vacationists.

Skiing in the Wasatch Mountains

Many places in the intermountain West are particularly well adapted to outdoor winter sports. Pinecrest Inn in Emigration Canyon and Brighton in Big Cottonwood are veritable "little Switzerlands." An ideal winter ski hike leads to Brighton, at the head of Big Cottonwood Canyon, twenty-eight miles southeast of Salt Lake City. Commencing at Park City, the trail leads over a high mountain pass at the head of Thayne's Canyon. Then comes a thrill when the remaining distance down the mountainside to Brighton is traversed with dazzling swiftness.

American Dog Derby, Ashton, Idaho

This annual Dog Derby held each February at Ashton is one of the West's most interesting winter events. Teams run over a twenty-five-mile course. Many of America's famous dog teams, as well as contestants from Canada, have taken part in these thrilling races that are packed with excitement from beginning to end.

Winter Sports Carnival, McCall, Idaho

Winter sports developed a new interest in 1924 with the inauguration of a carnival at McCall, Idaho, on beautiful Payette Lakes. This event covered two days—February 29th and March 1st—and consisted of individual and horse-paced ski races, tobogganing, ski-jumping and dog racing. It has continued as an annual event since its inception.

Skiing in the Wasatch Mountains.

Scenes at Ashton's Famous Dog Derby.



SUN VALLEY

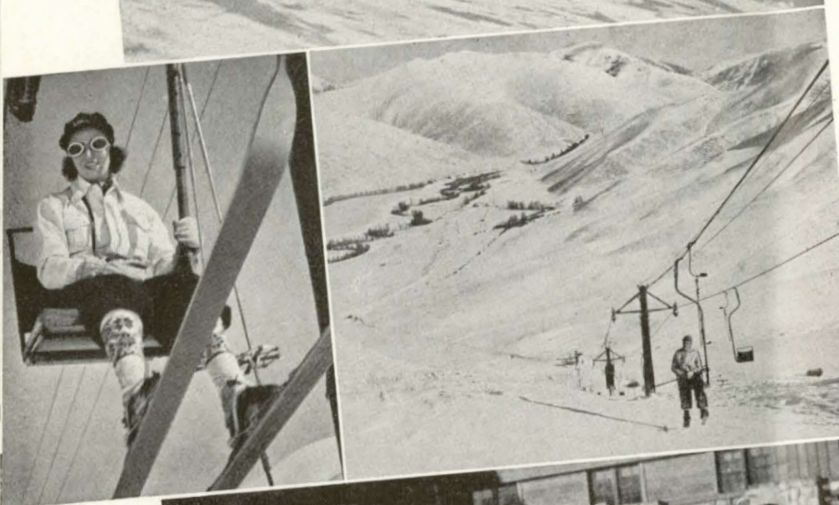
... AMERICA'S NEWEST WINTER

Sun Valley, near Ketchum, Idaho, is an ideal region for both winter and summer sports. It lies at the foot of the Sawtooth Mountains in the heart of a vast wilderness—a primitive region, dotted with hidden lakes and wandering streams alive with gamey fish. Deer, elk and other elusive game offer a challenge to the hunter with gun or camera.

In the winter, a fine "powder" snow blankets the valley and mountain slopes—a snow that is made-to-order for skiing, just as the long steep slopes are ideal for that exhilarating sport. Tobogganing, sleighing, skating and dog-sledging also may be enjoyed. And guests may acquire a glorious tan under the brilliant sun.

These natural advantages led to the selection of this beautiful region as the site for a sports center that would rival the smartest resorts on the European Continent—an objective achieved with the completion of the attractive Lodge with its charming interior . . . its modern comforts and facilities.

Opened for the winter season of 1936-37, Sun Valley Lodge became famous almost overnight. It combined American in-



AND SUMMER SPORTS CENTER

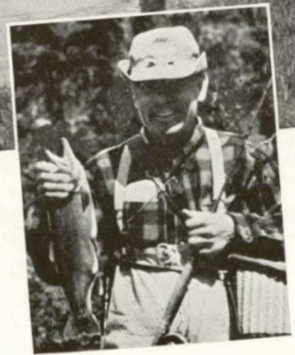
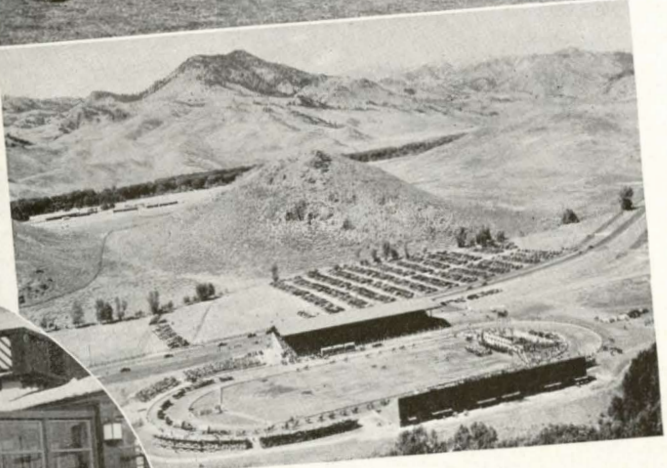
genuity with Continental atmosphere. Sports enthusiasts enjoyed the convenience of mechanical ski-lifts that carried them to the top of the runs . . . helpful instruction by the Ski School experts . . . the glass walled warm-water swimming pool . . . the excellent cuisine . . . the deft service of an experienced personnel.

Vacationists will find Sun Valley as enjoyable in summer as in winter. It offers a wide variety of recreation for all the family . . . fishing, hunting, golf, swimming and pack-trips. Saddle horses are always available. Beginners in the fly-casting art can obtain expert instruction at reasonable cost.

In August, 1937, the Sun Valley Rodeo was inaugurated. It drew a large enthusiastic audience and is now an annual feature of the summer season.

The new Challenger Inn provides rooms at modest rates and meals at popular prices with all the outdoor activities of Sun Valley available to its guests. Sun Valley Lodge also is operated on the European plan.

For rates and reservations write W. P. Rogers, General Manager, Sun Valley, Idaho.



UTAH NATIONAL PARKS



Cedar City, Utah, 275 miles from Salt Lake City, is the Gateway to the Utah-Arizona National Parks; Zion, Bryce and Grand Canyon. Cedar Breaks, Kaibab Forest, Navajo Lake, Fish Lake, Panguitch Lake are additional attractions of this region famed for its sublime scenic grandeur. Cedar City is just a short distance by motor coach from Lund, Utah, on the Union Pacific Railroad. On arrival at Cedar City, breakfast is served at the modern El Escalante Hotel. Then the tour continues into the National Parks.

Cedar Breaks National Monument

Colorful Cedar Breaks is nearly 4,500 feet higher than Cedar City, although only 25 miles distant. It lies at the head of Cedar Canyon in the heart of the Sevier National Forest. The Indian name for Cedar Breaks is "Circle of Painted Cliffs." Red is

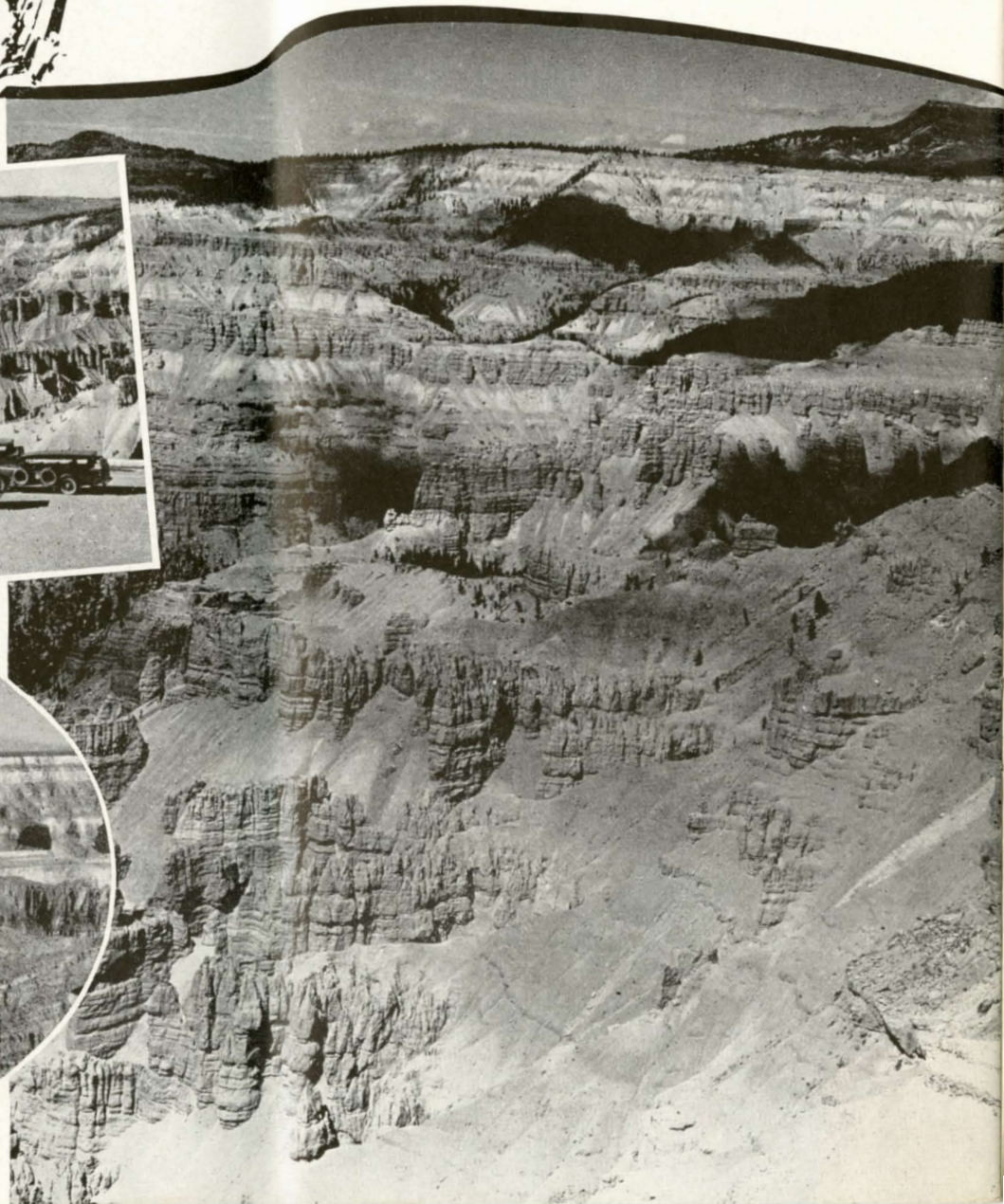


Tour Party at Cedar Breaks.



"Shooting" the
Grand Canyon.

Right—Colorful Cedar Breaks.





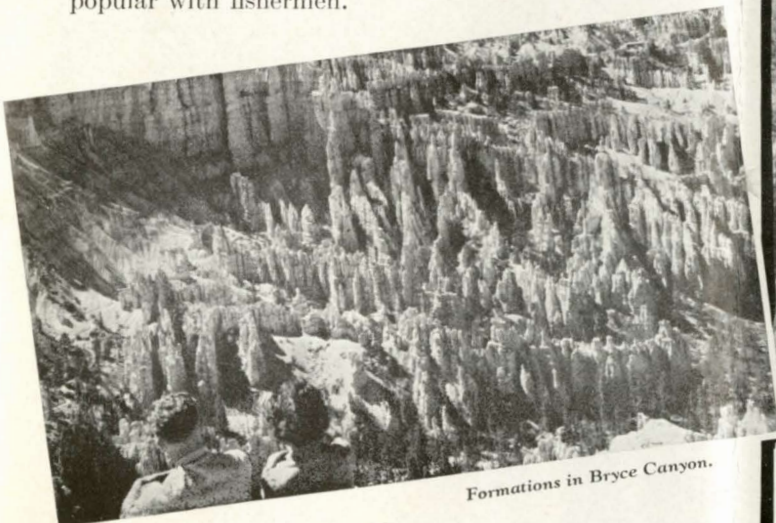
Up the Trail in Bryce Canyon

predominant — pinkish-red that deepens into orange. There are also shades of chocolate, yellow, lavender, purple and white. One artist has counted more than sixty tints.

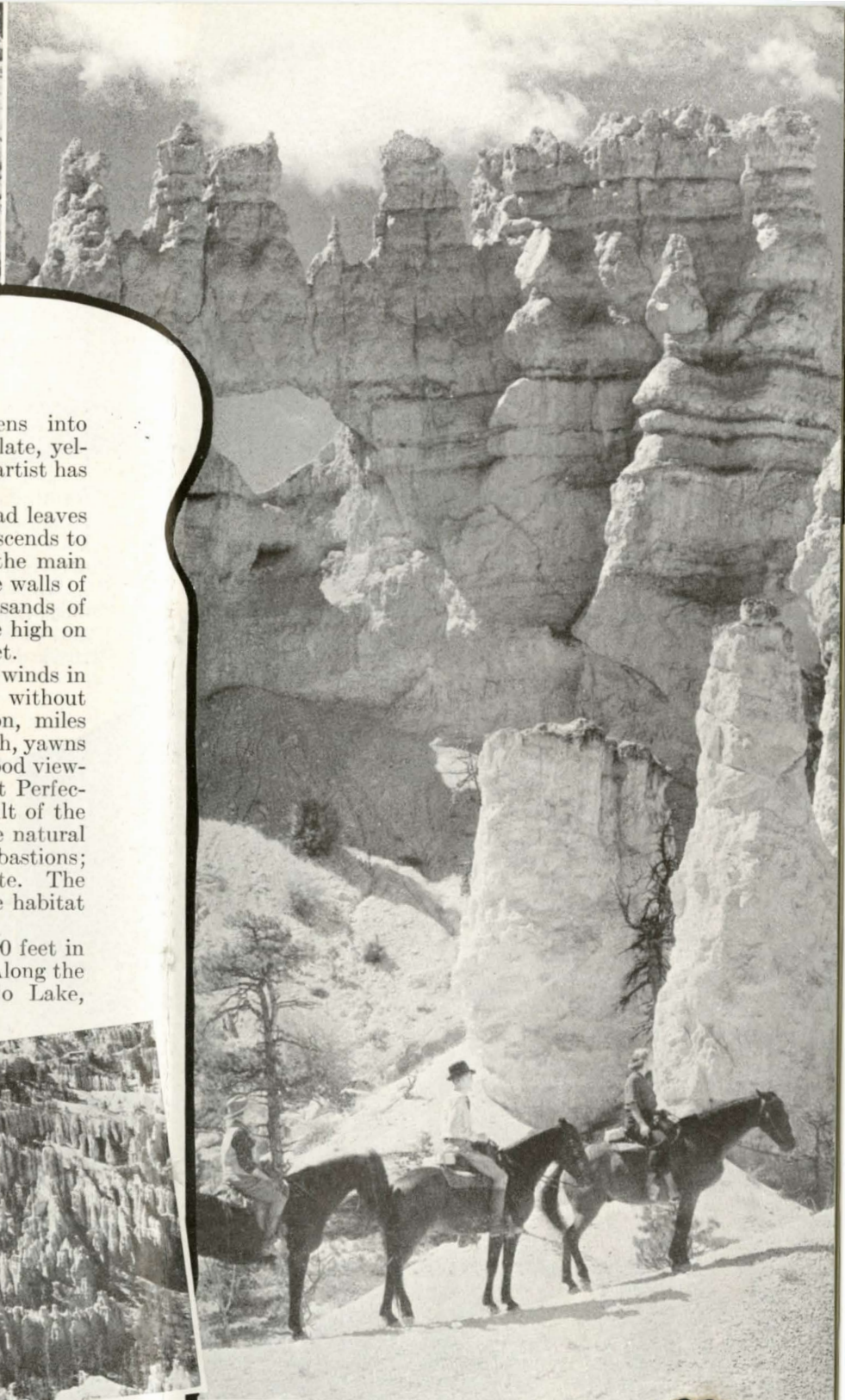
Near the head of the canyon, the road leaves the stream bed and in loops and turns ascends to the plateau. The stream itself leaves the main canyon and enters Ashdown Gorge. The walls of this narrow gorge tower upwards thousands of feet. There is a beautiful natural bridge high on the gorge wall, having a span of sixty feet.

Upon reaching the plateau, the road winds in and out through Sevier Forest until, without warning, the stupendous Cedar Canyon, miles across and more than a half a mile in depth, yawns before one. Along the rims are several good viewpoints such as Point Supreme and Point Perfection. From there one can view the result of the irresistible forces of erosion. Among the natural formations are parallel rows of crimson bastions; writhing dragon-like forms of pure white. The place might appropriately have been the habitat of prehistoric monsters.

Interesting highways drop down 2,000 feet in a seventy mile drive to Bryce Canyon. Along the route may be seen picturesque Navajo Lake, popular with fishermen.



Formations in Bryce Canyon.



Horseback Trips in Bryce Bring a Succession of Scenic Thrills.

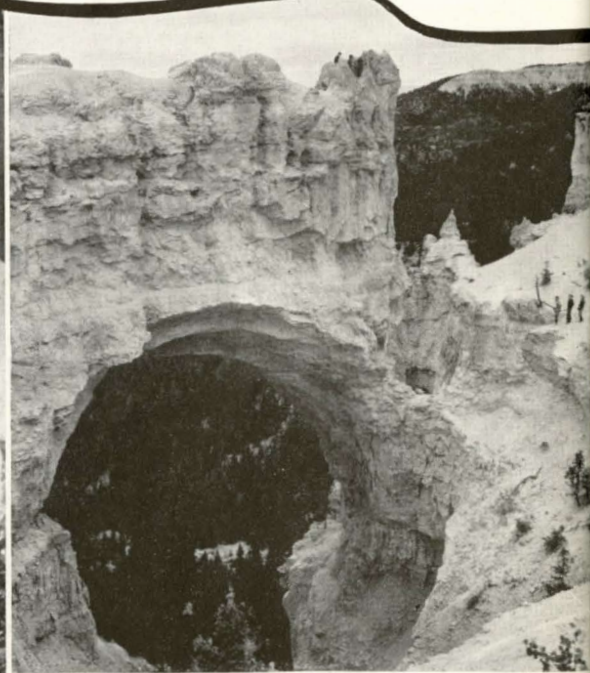
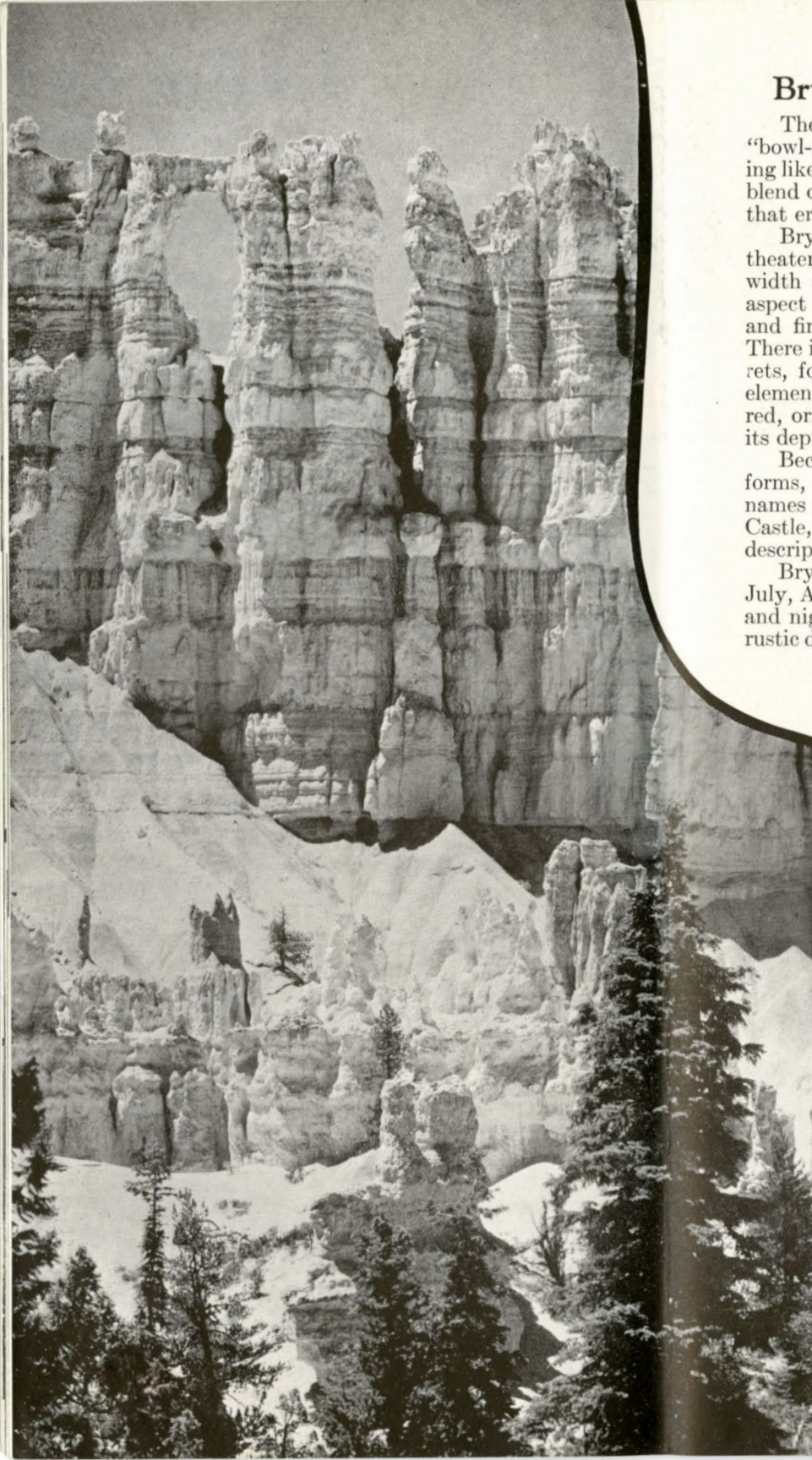
Bryce Canyon National Park

The Indians refer to the Bryce Canyon as "bowl-shaped canyon filled with red rocks standing like men." It probably is the most astonishing blend of exquisite beauty and grotesque grandeur that erosion has ever produced.

Bryce is not really a canyon but a giant amphitheater or basin varying from one to two miles in width and about three miles in length. In one aspect it is a gorgeous lacework design of frost and fire; in another it is a smoldering inferno. There is an endless array of towers, spires, minarets, fortresses and steeples sculptured by the elements. All the colors of the rainbow—pink, red, orange, purple, yellow and white—flicker in its depths.

Because of their resemblances to architectural forms, many of the formations have been given names such as the Sculptor's Studio, the Queen's Castle, Tower Ridge, Moon Temple and other descriptive terms.

Bryce Canyon may be visited during June, July, August and September. Days are enjoyable and nights pleasantly cool. Lodges of attractive rustic design provide modern accommodations.



The Great Natural Bridge in Bryce.

Wall of Windows, Bryce Canyon National Park.



A Deluxe Lodge in the Utah-Arizona National Park Region.

Grand Canyon Viewed from Bright Angel Point.



Kaibab National Forest

After crossing the state line into Arizona, en-route to Grand Canyon, you come to the Kaibab National Forest. This beautiful grass-carpeted, tree-covered region borders the north boundary of Grand Canyon National Park. It covers the Kaibab Plateau, is forty to fifty miles wide and approximately seventy miles long.

Giant monarchs of pine, spruce and fir stretch away in undulating waves of color from vivid

greens that deepen to blues and gradually end in a purple haze on the dim horizon.

In this great forest, more than twenty thousand deer roam through what was once a famous Indian hunting ground. Here also is found the Kaibab squirrel, a species found nowhere else in the world. It is larger and darker in color than the common gray squirrel and has a broad, white, feathery tail. These squirrels flash through the trees of Kaibab like white comets.

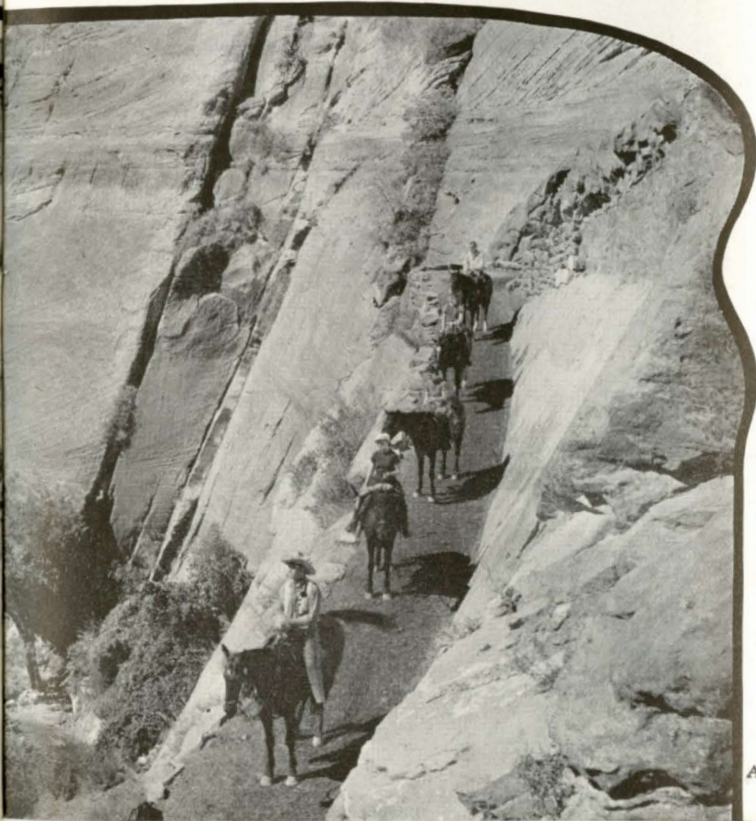
For more than forty miles the road winds through the green of Kaibab. Then suddenly it straightens out into a broad avenue and one-half mile away you catch a glimpse of Grand Canyon Lodge.

Grand Canyon National Park

At Bright Angel Point, right on the North Rim of Grand Canyon, you will find the recently reconstructed Grand Canyon Lodge which provides visitors with everything desirable in modern facilities. The North Rim of the canyon is 1,287 feet higher than the South Rim and thus guests at the lodge are afforded an excellent panoramic view of the canyon.

Thirteen miles wide and a mile deep, the immensity of this vast chasm is overpowering. A sea of colors plays over the walls of the canyon, constantly varying in tones and intensity. It is a tremendous spectacle that leaves a never-to-be-forgotten impression.

Many delightful side trips on smooth highways may be made to other points of advantage. Among the most interesting is the trip to Marble Canyon where, to the east, stretches the Painted Desert. Other exceptional viewpoints such as Point Sublime and Cape Royal are conveniently reached from Grand Canyon Lodge.

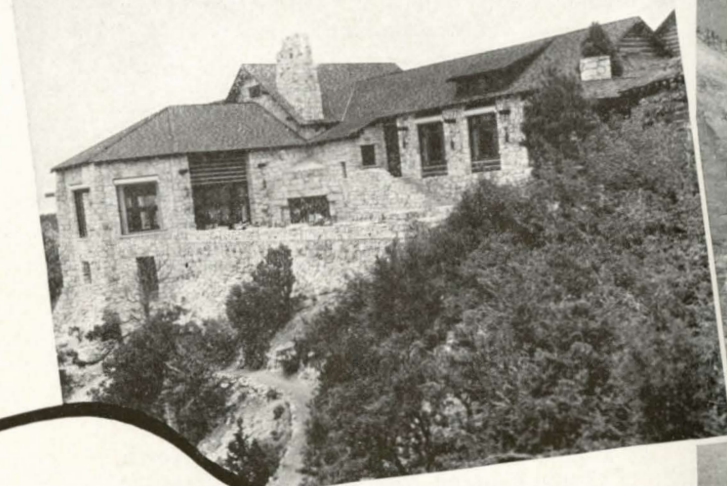


Along the West Rim Trail in Zion.



The Grand Canyon . . . Colorful and Mysterious.

New Grand Canyon Lodge.



Utah Parks Bus on Mount Carmel Highway, Zion National Park.



The Zion-Mount Carmel Highway

Traveling northward toward Zion National Park, your route branches off at Mt. Carmel for a twenty-five mile ride over the spectacular Mount Carmel Highway.

After threading through several colorful gorges you enter a great tunnel, cut for more than a mile through solid rock. Opening from it are six windows looking out upon views of remarkable grandeur. Leaving the tunnel, you are just three miles from Zion Lodge.

Zion National Park

Zion Lodge is in the heart of Zion National Park. Accommodations comprise a large central rustic sleeping lodge as well as a number of de luxe

lodges for guests desiring more spacious quarters and additional refinements.

Zion National Park covers an area of 76,800 acres and includes many gigantic gorges, sculptured and painted by Nature throughout the ages to enthrall those who enter its portals.

Picture a stupendous canyon fourteen miles long, with massive, vividly colored walls, and unscaled peaks that rise several thousand feet above the canyon floor.

Mormon colonists entered this region about 1858. To them the mountains forming the Canyon's walls were truly temples of God, and they named it "Little Zion," after the heavenly city toward which their thoughts were turned.

Among Zion National Park's many attractions are the East and West Temples, the Three

Patriarchs, the Mountain of Mystery, Angels Landing and El Gobernador—The Great White Throne. Angels Landing is a gigantic, brick-red butte, towering over two thousand feet in height, while The Great White Throne is a colossal pile of bold sandstone merging from red at the base to a white and blending to a delicate purple in its upper reaches.

From the West Rim of the Canyon one can see what appears to be a vast city of spires and terraces painted in a dazzling variety of colors.

There are many interesting trips in and around Zion and a visit to the prehistoric cliff dwellings in the Parunaweap Canyon is well worth while. Here strange sign-paintings in a long-lost language may be seen.

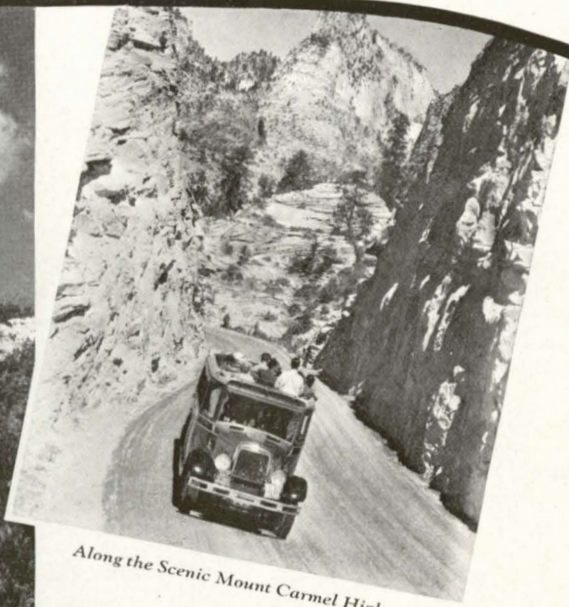
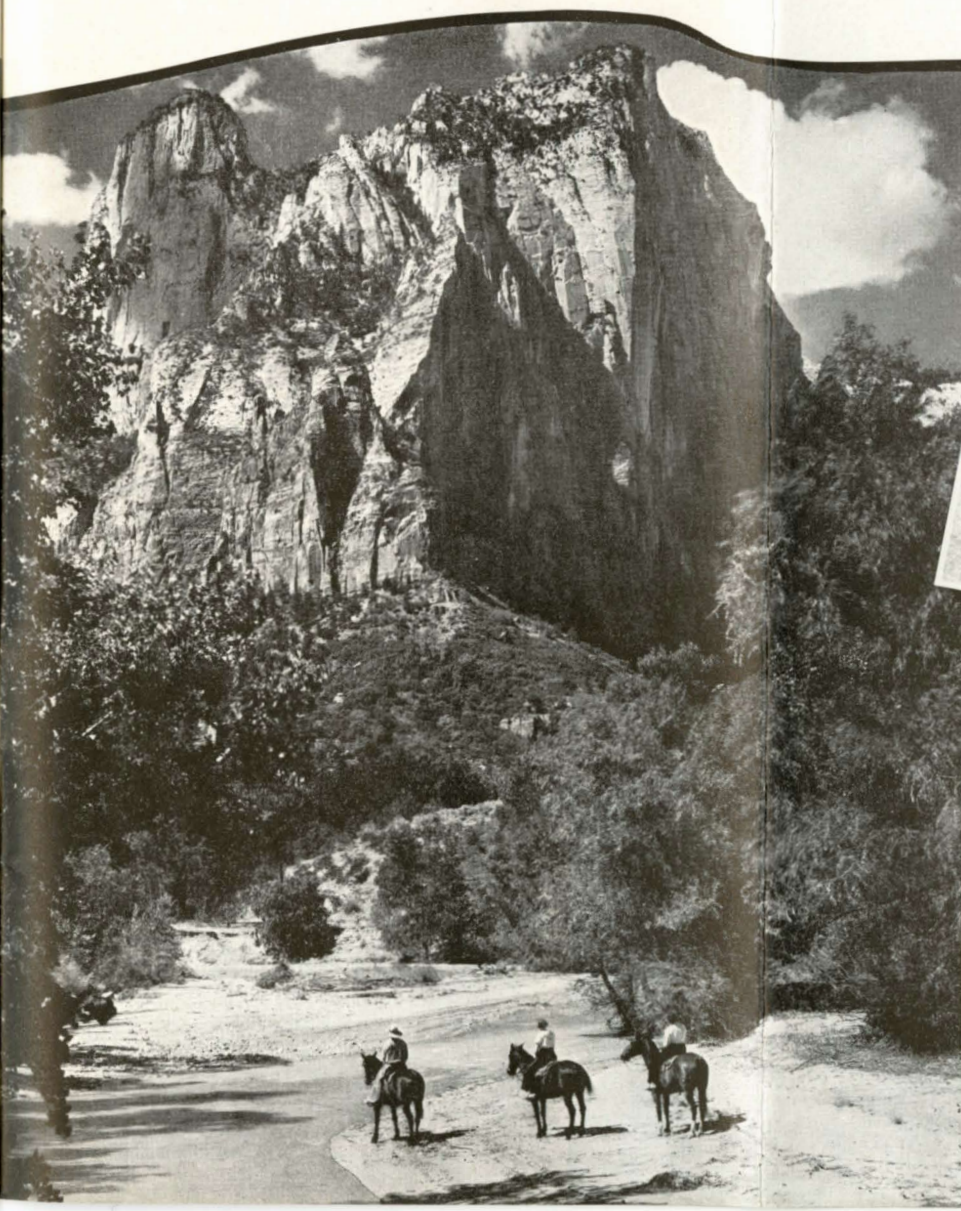
Petrified Forest

Near Rockville, four miles off the automobile highway, is a petrified forest and scattered along the way are examples of immense petrified trees, some with trunks four and one-half feet in diameter.

Union Pacific offers a variety of inexpensive combination tours which include the most interesting scenic attractions of these Utah-Arizona National Parks.

The Great Hurricane Fault

A little farther along is Hurricane Fault, one of the most spectacular earth fractures created by nature. This immense geologic fault resulted in a vast valley area which through the ages has



Along the Scenic Mount Carmel Highway.



Entrance to Mt. Carmel Highway Tunnel.

Left—Angel's Landing, Zion.

become filled with soil accumulation and today is a checkered field of grain, orchard and meadow areas, inspiring in its effect.

Como Springs

Como Springs resort is less than a mile distant from Morgan station in north central Utah. This resort features hot mineral springs bathing, dancing and boating. Trout, carp and bass fishing is conveniently available. Accommodations in tents and cottages. For details address Como Springs Manager, Morgan, Utah.

Granddaddy Lakes Region

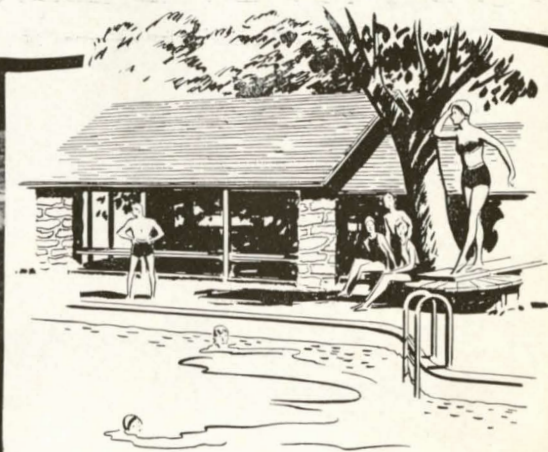
"Granddaddy Lakes" is a title applied to the district comprising the western end of the Uintah Mountains. It contains over one hundred good fishing lakes on a forested plateau surrounded by mountain peaks.

There are splendid camping grounds and during the months of July and August, in particular, days are delightful and nights pleasantly cool. This region is conveniently reached from Echo, Ogden or Salt Lake City. Information and advance reservations can be had through E. J. Adair or Frank Savage, Hanna, Utah; Morgan Parks, Kamas, Utah, or Stewart's Ranch, Wasatch County, Utah.

Note: To travelers enroute to the Pacific Coast, Yellowstone or Utah-Arizona National Parks it is suggested that they stop over at Ogden, Utah and enjoy the scenic beauty and recreational opportunities offered in this richly endowed region.

Ogden and Ogden Canyon

Ogden is situated in a beautiful setting at the base of an inspiring mountain cliff. From the depot and leading hotels, sightseeing tours are offered



to and through Ogden Canyon, a magnificent deep-cut gorge. A picturesque mountain stream, paralleled by boulevard and trolley line, flows through the heart of the city and on through the canyon. Information concerning these and other interesting features may be obtained from the Ogden Chamber of Commerce.

Salt Lake City and Environs

"The Center of Scenic America"

Salt Lake City is a thriving metropolis with all modern facilities. It is the seat of the Mormon Church. The visitor's first inclination is to see Temple Square which embraces the Great Temple, the Tabernacle, and other magnificent buildings. In the Tabernacle, built without a single nail, the dropping of a pin in the speaker's rostrum may be distinctly heard at the farthest point in the amphitheater, which seats 9,000 people.

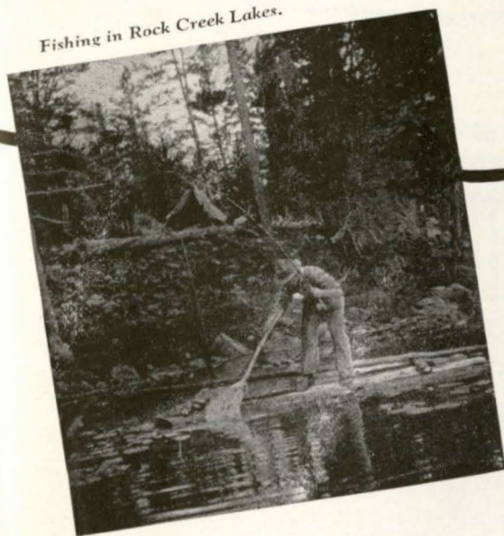
Parties are personally escorted through the grounds and buildings and at noon each day may hear a free organ recital in the Tabernacle. Automobile sight-seeing tours are operated to all points of interest. At Point Lookout, or Wasatch Drive, one may obtain a wonderful panoramic view of Great Salt Lake Valley.

The City Warm Spring Baths are a municipal institution providing two indoor pools, private pools and a large open-air pool for summer bathing. In addition, there is the open-air pool at Beck Hot Springs . . . Lagoon, an amusement and bathing resort, and many other attractive spots offering recreational facilities within a convenient distance from Salt Lake City.

Emigration Canyon

It was in Emigration Canyon, on July 24, 1847, that the Mormon pioneers caught their first glorious view of Great Salt Lake Valley. Pine-

Fishing in Rock Creek Lakes.



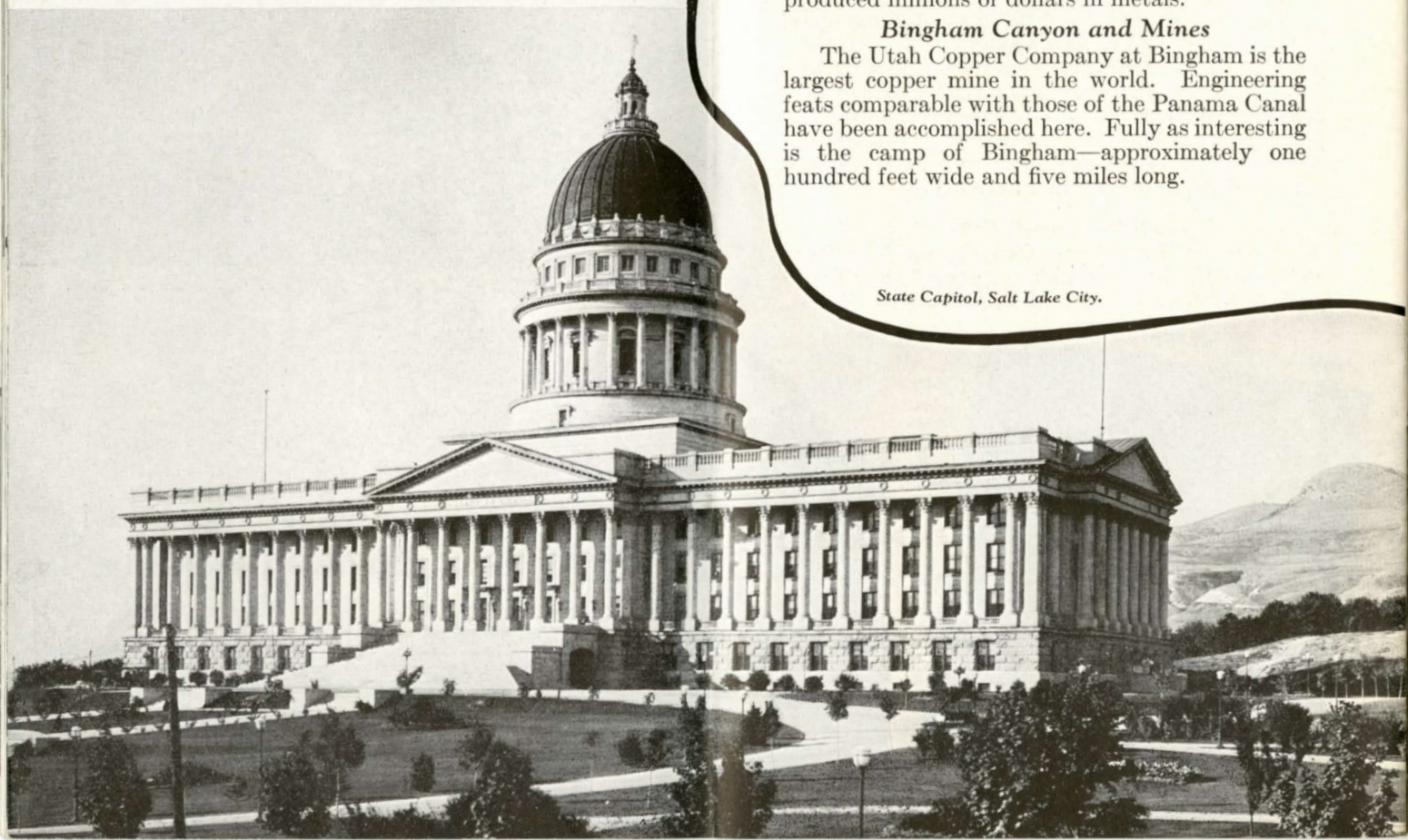
The Hermitage, Ogden Canyon, Utah.

Looking Down Ogden Canyon.





Chipita Lake, Uintah Mountains.



State Capitol, Salt Lake City.

crest Inn, a short auto ride up the canyon, provides excellent accommodations and features winter sports such as skiing and tobogganing.

Parley's Canyon

Here is another scenic retreat nearby Park City, Utah's great and oldest silver-mining camp. A railroad operates through this canyon to Park City, which also may be reached from Echo, Utah, on the Union Pacific.

Big Cottonwood Canyon and Brighton Resort

South from Parley's Canyon is Big Cottonwood Canyon, entered between towering granite cliffs. Thirteen miles from the Canyon's mouth, at an elevation of 8,600 feet is the resort of Brighton in a basin dotted with gem-like lakes. Two picturesque hotels provide accommodations. Automobile stages leave Salt Lake City for Brighton every morning and return in the afternoon.

Little Cottonwood Canyon

This interesting attraction is a delightful trip by auto from Salt Lake City. The route traverses Salt Lake Valley to the mouth of the canyon. The scenery is superb and after a ride of about eighteen miles, the mining camp of Alta is reached. Among the best known mines is Old Emma, which has produced millions of dollars in metals.

Bingham Canyon and Mines

The Utah Copper Company at Bingham is the largest copper mine in the world. Engineering feats comparable with those of the Panama Canal have been accomplished here. Fully as interesting is the camp of Bingham—approximately one hundred feet wide and five miles long.



Another striking engineering accomplishment is the railroad which carries ore. The track leads over trestles a hundred feet high and through long tunnels. To build one mile of this road cost nearly \$600,000.

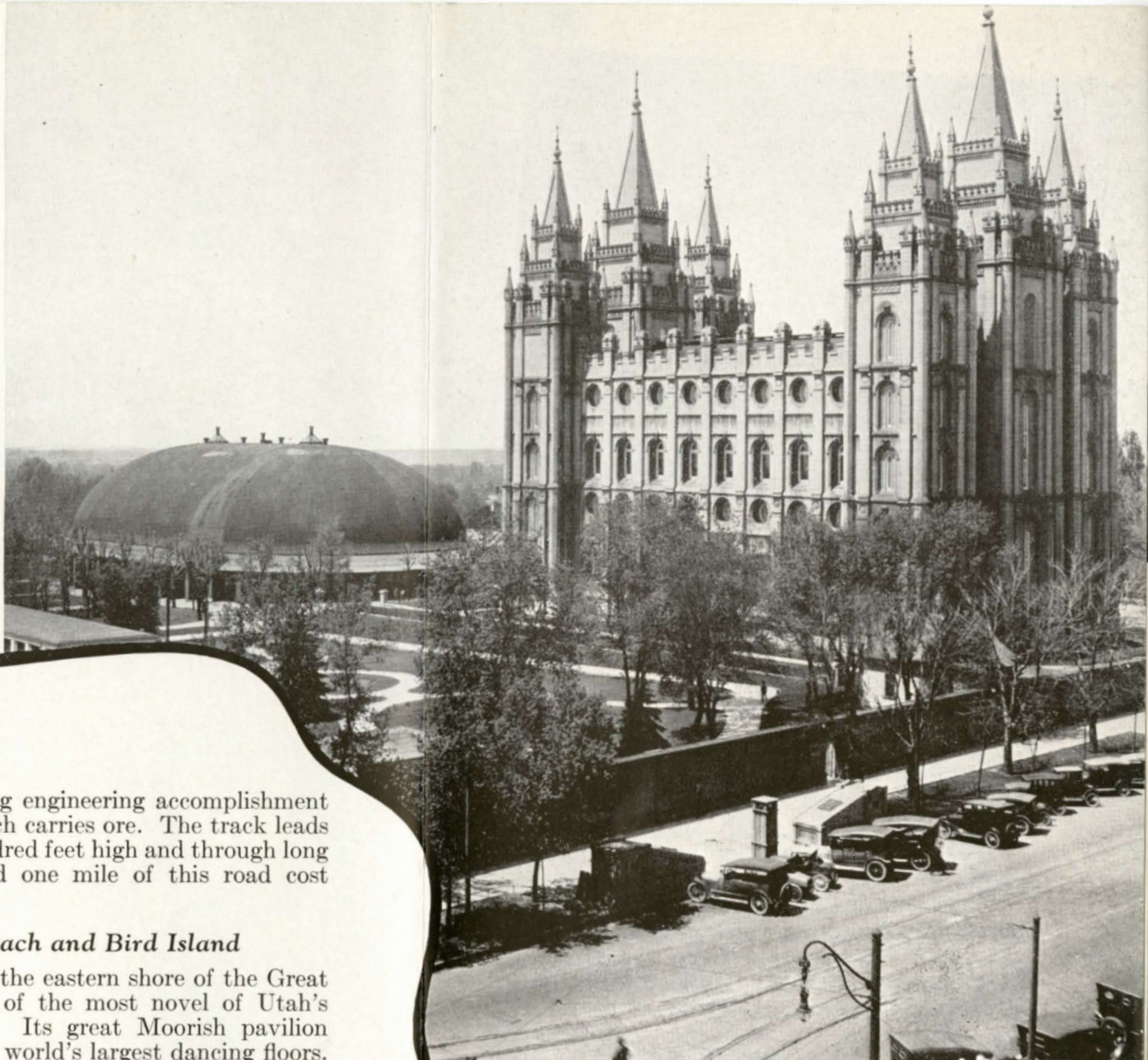
Saltair Beach and Bird Island

This resort, on the eastern shore of the Great Salt Lake, is one of the most novel of Utah's many attractions. Its great Moorish pavilion features one of the world's largest dancing floors. The water in Great Salt Lake—an inland sea—contains 22% salt and is so buoyant that it is impossible for a person to sink. Saltair Beach may be reached in only thirty minutes from Salt Lake City by electric car.

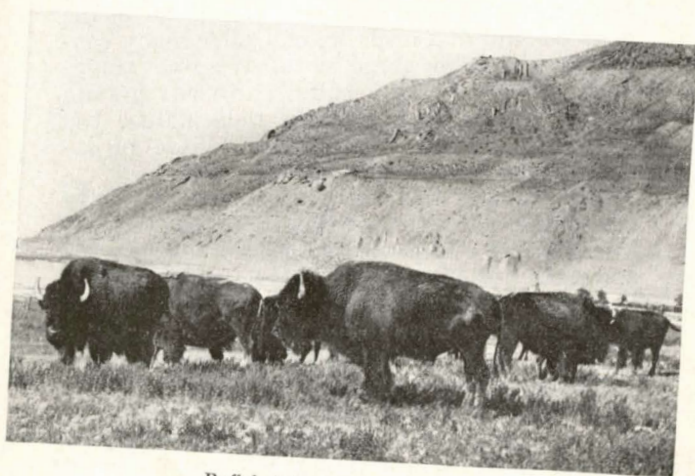
Motor boats make trips from Saltair Beach to Bird Island in the center of the lake. Thousands of seagulls, pelicans, and cranes inhabit this island. The parent birds transport food forty miles from the mainland, as no food is available on the island or in the lake. Each winter the seagulls fly to the Pacific Ocean, returning in the spring.

"Antelope" or "Buffalo" Island

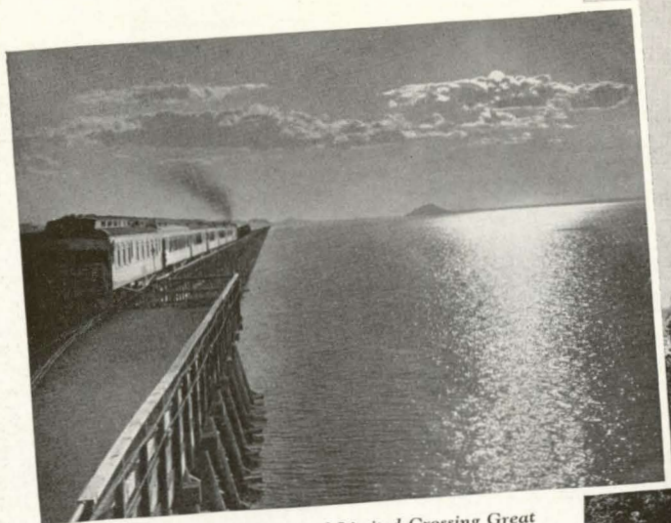
This island is five miles north of Saltair Beach. It is the home of one of the few remaining herds of buffalo. The buffalo hunting scenes of Emerson Hough's story "The Covered Wagon" were filmed on Buffalo Island.



Temple Square, Salt Lake City, Utah.



Buffalo Island, Great Salt Lake.



The Union Pacific Overland Limited Crossing Great Salt Lake.

Further details concerning places of interest may be obtained by addressing the Chamber of Commerce, Salt Lake City, Utah.

Note: Salt Lake City is a convenient stop-over for travelers bound for Yellowstone, Pacific Northwest, Utah-Arizona National Parks or California. Southward from Salt Lake City, over Union Pacific Railroad, are intervening features of surpassing interest, including American Fork Canyon and Timpanogos Cave, Utah Lake resorts, Mt. Timpanogos, Utah's Dixie-land, and other interesting regions.

American Fork Canyon and Timpanogos Cave

Thirty-two miles south from Salt Lake City, reached from American Fork, Utah, is one of the most colorful and inspiring of Utah's many canyons. A gigantic gorge in the Wasatch Mountains, its sky-reaching spires surmount granite walls. On the face of these walls nature has sculptured pictures representing foliage of inspiring beauty.

Timpanogos Cave is a crystalline cavern in the south wall of the canyon, its interior lighted by electricity. Here visitors will find stalagmites and stalactites of every size and description, from bayonet-like icicles to sturdy pillars.

Six miles beyond Timpanogos cave is Camp Altamont where meals and lodgings are provided at reasonable rates.

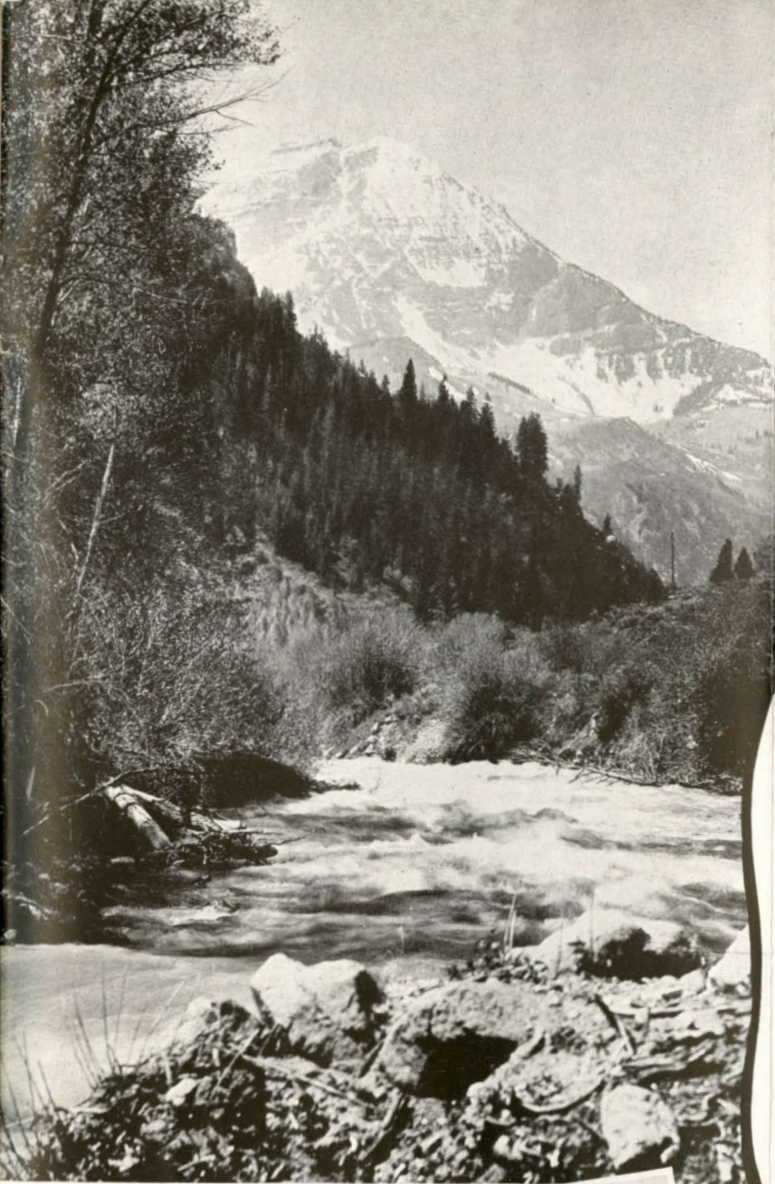
Saddle horses and guides are available for trips to Mount Timpanogos, to the glacier and



Lake Phoebe in Great Cottonwood Canyon.

Utah Copper Company Properties in Bingham Canyon.





Mt. Timpanogos.

Bird Island, Great Salt Lake.



other scenic points. For information and reservations write Reed W. Warnick, Pleasant Grove, Utah.

Mt. Timpanogos

A brief ride from Provo or Salt Lake City brings one to the base of Mt. Timpanogos either by way of Aspen Grove in picturesque Provo Canyon or rugged American Fork Canyon. After a night in camp, a climb may be undertaken up Mt. Timpanogos over a Forest Service trail that passes through five plant life zones to the summit of the peak, 12,000 feet in elevation. A thrilling panorama is visible from the crest.

Sixteen years ago an annual community hike to the crest of Mt. Timpanogos was inaugurated by Director E. L. Roberts of Brigham Young University. People from all over the United States now participate in growing numbers in this hike which takes about two days' time.

Details concerning the community hike or special trips may be obtained at the Forest Service Office in the Federal Building, Salt Lake City, or Secretary of the Chamber of Commerce or the Brigham Young University, Provo, Utah.

The Alpine Summer School

This is an unusual summer attraction at Mt. Timpanogos which is held annually at Aspen Grove and attracts a large number of artists who find adequate inspiration in this magnificent mountainous country. The school is located on the Scenic Loop of the Alpine Highway.

Provo Canyon

The immense width between the canyon walls provides sites for several villages and outing camps on the canyon floor. A railroad line is operated through the canyon from Provo to Heber



Saltair Pavilion,
Great Salt Lake.

City. A fine automobile highway also traverses the canyon leading to the Strawberry and Granddaddy Lakes region. In this locality are many attractions of charming beauty such as Sunset Cliffs and the Bridal Veil Falls.

Utah Lake Resorts

Utah Lake, thirty-five miles south from Salt Lake City, is a fresh water body, twelve by forty miles in size, the largest fresh water lake in Western United States. From it the Jordan River derives its flow and empties into Great Salt Lake. There are several resorts on the lake, reached by auto from Lehi, American Fork, Provo, Springville, Spanish Fork or Payson, or other points on the Union Pacific Railroad, including Saratoga Hot Springs and Geneva. These resorts provide facilities for bathing, boating, dancing, fishing and camping.

Puffers Lake Region

Thirty-six miles east of Milford, Utah, and eighteen miles beyond Beaver City, Puffers Lake lies in the center of a scenic region, its waters reflecting the cool beauty of pine and aspen forests. Other lakes including Otter, Deer, Red Pine,

Burch, Mirror, Kents, Blue and Minersville are nearby.

Lending added interest to this region are a number of extinct volcanoes as well as snow-capped peaks of unusual height including Mt. Holly—11,000 feet; Mt. Delano—11,000 feet; Mt. Belknap—12,000 feet; and, Mt. Baldy—11,700 feet.

The forests, valleys, mountains and canyons provide charming retreats for the camper and hiker. Lakes and streams have been stocked with game fish, including Rainbow, Cut-throat, Eastern Brook, Dolly Varden trout, and bass. It's an ideal vacation region for the ardent angler.

A log hotel and permanent camp tents that offer reasonable priced accommodations and meals are located at Otter Lake. For detailed information address Manager, Otter Lake Camp, Beaver City, Utah.

Panguitch and Fish Lakes

These lakes are among the most charming and popular of Utah's galaxy of outing and fishing resorts, reached over convenient highways from Cedar City. Fish Lake, about one hundred fifty miles northeast from Cedar City, is a charming mountain lake, seven miles long by about two miles wide. Its waters teem with many varieties of trout. Two resort hotels are situated on the lake shore. Motor boats, rowboats and fishing tackle are available.

Panguitch Lake is within forty miles of Cedar City and while smaller than Fish Lake is in an equally beautiful setting, surrounded by a pine forest. Trips to these lakes may be arranged through Transportation Manager, Utah Parks Company, Cedar City, Utah.

Bear Lake

This thirty mile long lake is conveniently reached from Montpelier or Paris, Idaho, or from Logan, Utah. Resorts along the lake shores include BEAR LAKE HOT SPRINGS, LAKOTA and FISH HAVEN.

All of these resorts offer recreational activities such as fishing, swimming, boating and dancing. In addition, there are ample and comfortable accommodations at attractively low rates.

For reservations or information regarding these resorts, address the following persons: Manager, Lakota Resort, Fish Haven, Idaho; Manager, Bear Lake Hot Springs, Bear Lake County, Idaho; Manager, Stock Brother's Resort, Fish Haven, Bear Lake County, Idaho.



Sentinel Point, Provo Canyon.

Planning Your Idaho-Utah Vacation Trip

Union Pacific offers a complete Vacation Planning Service. A representative at any of the addresses shown below will gladly help plan your trip to the smallest detail of time and cost. They are familiar with this great Western Vacation Region and really *enjoy* helping you. Call or write the office nearest you.

ABERDEEN, WASH. 3 Union Passenger Station
ASTORIA, ORE. Foot of 11th Street
ATLANTA, GA. 1232 Healey Building
BEND, ORE. 116 Oregon St.
BOISE, IDAHO. 212 North 8th St.
BOSTON, MASS. Rm. 207, 294 Washington St.
BUTTE, MONT. 229 Rialto Bldg., 4 S. Main St.
CHEYENNE, WYO. Union Pacific Passenger Station
CHICAGO, ILL. 1 South LaSalle St.
CINCINNATI, OHIO. 705 Dixie Terminal Bldg.
CLEVELAND, OHIO. 1006 Terminal Tower Bldg.
COUNCIL BLUFFS, IOWA. Union Pacific Transfer Depot
DALLAS, TEXAS. 1029 Kirby Bldg.
DENVER, COLO. 535 Seventeenth St.
DES MOINES, IOWA. 407 Equitable Bldg.
DETROIT, MICH. Room 508, 131 Lafayette Blvd., W.
EAST LOS ANGELES, CALIF. 5454 Ferguson Drive
EUGENE, ORE. 1691 Olive St.
FRESNO, CALIF. 207 Rowell Bldg.
GLENDALE, CALIF. 206 North Brand Bldg.

HOLLYWOOD, CALIF. 6702 Hollywood Blvd.
HUNTINGTON PARK, CALIF. 6815 Pacific Blvd.
KANSAS CITY, MO. 208 East Eleventh St.
LEWISTON, IDAHO. Room 7, Union Depot
LINCOLN, NEB. 130 So. 13th St.
LONG BEACH, CALIF. 220 Pine Avenue
LONGVIEW, WASH. Union Pacific Bldg.
LOS ANGELES, CALIF. Room 814, 212 W. Wisconsin Ave.
MILWAUKEE, WIS. Room 890, 620 Marquette Ave.
MINNEAPOLIS, MINN. Room 1007, 226 Carondelet St.
NEW ORLEANS, LA. Room 511, 521 Fifth Ave.
NEW YORK, N. Y. Room 215, 436 14th St.
OAKLAND, CALIF. Ben Lomond Hotel Bldg.
OGDEN, UTAH. 301 So. 16th St.
OMAHA, NEB. 205 W. Colorado St.
PASADENA, CALIF. 904 Girard Trust Bldg.
PHILADELPHIA, PA. 216 Oliver Bldg.
PITTSBURGH, PA. Union Pacific Passenger Station
POMONA, CALIF. 701 S. W. Washington St.
PORTLAND, ORE. Fisher Bldg., 4 Orange St.
REDLANDS, CALIF. 200 Lyon Bldg.

RENO, NEV. Union Pacific Passenger Station
RIVERSIDE, CALIF. Room 217, 1107 Ninth St.
SACRAMENTO, CALIF. 517 Francis St.
ST. JOSEPH, MO. Room 203, 308 N. 6th St.
ST. LOUIS, MO. Hotel Utah
SALT LAKE CITY, UTAH. 345 Plaza St.
SAN DIEGO, CALIF. 355 Geary St.
SAN FRANCISCO, CALIF. 206 First National Bank Bldg.
SAN JOSE, CALIF. 808 South Pacific Ave.
SAN PEDRO, CALIF. 305 N. Main St.
SANTA ANA, CALIF. 307 Santa Monica Blvd.
SANTA MONICA, CALIF. 1403 Fourth Ave., and 204 Union Station
SEATTLE, WASH. Union Passenger Station
SPOKANE, WASH. 114 S. Ninth St.
TACOMA, WASH. Room 201, 69 Yonge St.
TORONTO, ONTARIO. Room 320, 321 S. Boston St.
TULSA, OKLA. Baker Bldg.
WALLA WALLA, WASH. 300 National Press Bldg.
WASHINGTON, D. C. 632 Reynolds Bldg.
WINSTON-SALEM, N. C. 104 West Yakima Ave.
YAKIMA, WASH. 200 Lyon Bldg.

J. C. CUMMING
General Passenger Agent
PORTLAND, ORE.

R. E. Drummy
General Passenger Agent
LOS ANGELES, CALIF.

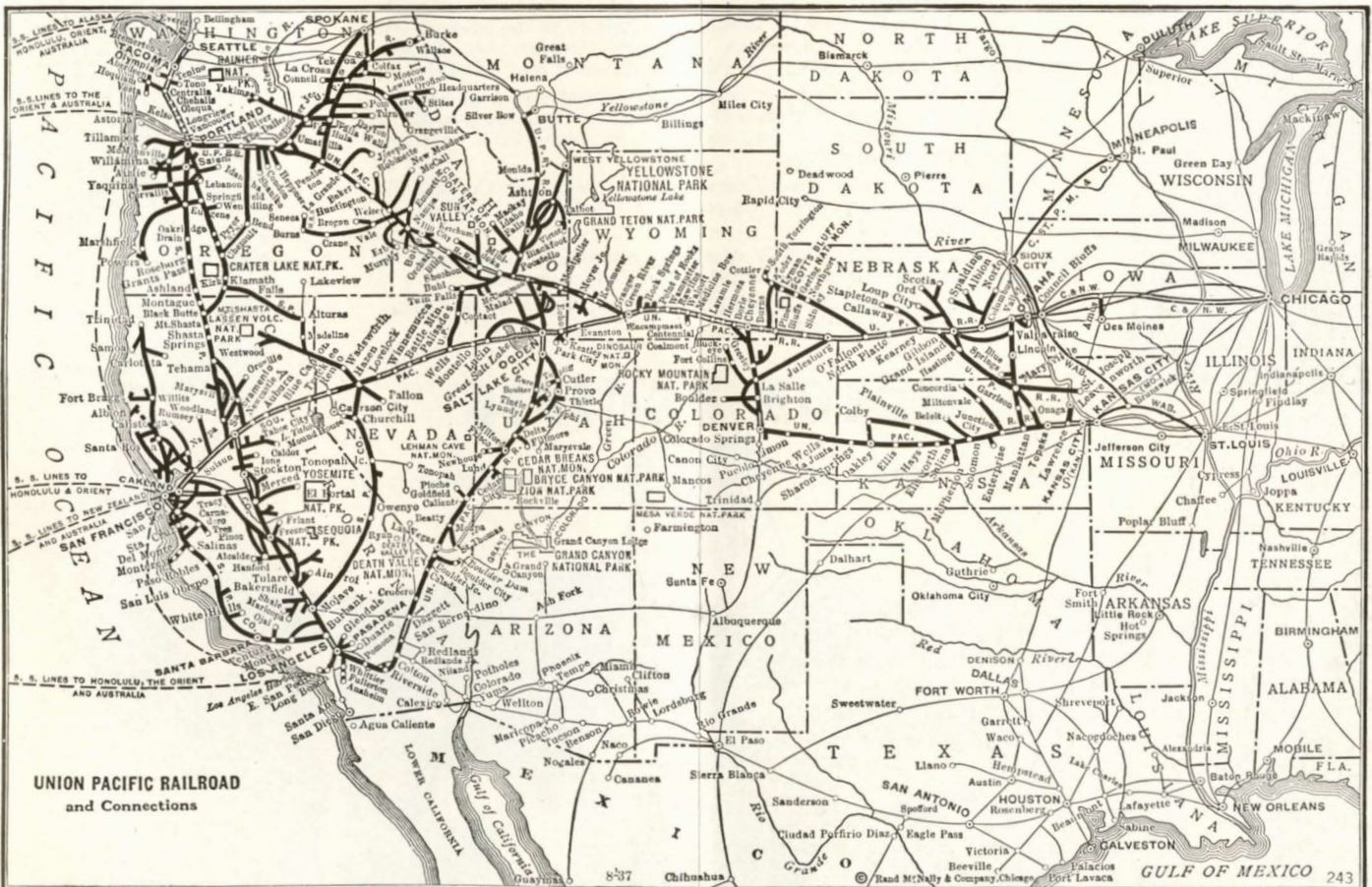
A. J. SEITZ
Asst. Traffic Manager
SALT LAKE CITY, UTAH

C. J. COLLINS
Asst. Passenger Traffic Manager
OMAHA, NEB.

W. S. BASINGER
Passenger Traffic Manager
OMAHA, NEB.

DEPARTMENT OF TOURS

(Union Pacific Railroad — C. & N. W. Ry.) — 148 South Clark Street, Chicago, Ill. — JOHN C. POLLOCK, Manager





(Above)—In Union Pacific club observation car.

(Below)—Lounge Car on The Challenger.



(Below)—Drawing rooms afford privacy.

(Lower Right)—Registered Nurse—Stewardess service on many trains.



(Above)—“Meal Time”—a pleasure amid delightful surroundings.

(Below)—Challenger Dining Car—low cost meals.



(Lower Left)—Enjoying a Pullman semi-private section.

(Below)—Significant of the slogan “Meals that Appeal.”



SERVES ALL THE WEST

Union Pacific serves more of the West than any other railroad.

The Union Pacific West includes, in addition to the Idaho-Utah region, Colorado, Yellowstone, California, Boulder Dam, Southern Utah and Arizona, the Pacific Northwest and Alaska.

The Union Pacific's fast Streamliners speed you between the East and West—a minimum of time enroute—making possible a maximum time for outdoor recreation in Idaho-Utah or other western vacation regions.

In addition to the Streamliners, there are the famous Coach-Pullman-Tourist Sleeping car trains—“The Challengers,” as well as other fine trains.

All trains are splendidly equipped, completely air-conditioned and provide the utmost in travel service and convenience.

For full information in detail consult any Union Pacific ticket agent or representative.

UNION PACIFIC

The Progressive



Railroad